

State of Alaska
FY2022 Governor's Operating Budget

Department of Labor and Workforce Development
Workers' Compensation Appeals Commission
Component Budget Summary

Component: Workers' Compensation Appeals Commission

Contribution to Department's Mission

Ensure timely and well-reasoned decisions on appeals from final decisions and orders of the Workers' Compensation Board.

Core Services

- Adjudicate appeals from disputed Workers' Compensation Board decisions fairly, deliberate carefully, and provide timely decisions.
- Develop a sound, consistent, well-reasoned administrative interpretation of the workers' compensation law for the guidance of insurers, employers, workers, and the board.

Major Component Accomplishments in 2020

During FY2020, the Workers' Compensation Appeals Commission closed approximately 94 percent of cases within 12 months of the filing of an appeal or petition for review.

Key Component Challenges

The Workers' Compensation Appeals Commission (WCAC) is challenged to provide timely decisions and orders. WCAC is supported by two staff. While no immediate staff turnovers are anticipated, any attrition could result in less support for the commission, making it more difficult to provide timely decisions and orders.

Significant Changes in Results to be Delivered in FY2022

No significant changes in results to be delivered are anticipated.

Statutory and Regulatory Authority

Statutory Authority:

AS 23.30.007 - .009

Workers' Compensation Appeals Commission

Contact Information

Contact: Deirdre Ford, Chair WC Appeals

Phone: (907) 269-6738

E-mail: deirdre.ford@alaska.gov

Workers' Compensation Appeals Commission Personal Services Information					
Authorized Positions			Personal Services Costs		
	<u>FY2021</u> <u>Management</u> <u>Plan</u>	<u>FY2022</u> <u>Governor</u>			
Full-time	2	2	Annual Salaries		175,416
Part-time	0	0	COLA		725
Nonpermanent	0	0	Premium Pay		0
			Annual Benefits		97,784
			<i>Less 2.82% Vacancy Factor</i>		<i>(7,727)</i>
			Lump Sum Premium Pay		0
			Board Honoraria		22,377
Totals	2	2	Total Personal Services		288,575

Position Classification Summary					
Job Class Title	Anchorage	Fairbanks	Juneau	Others	Total
Chair, Wkrs Comp Appeals Comm	1	0	0	0	1
Law Office Assistant II	1	0	0	0	1
Totals	2	0	0	0	2

Component Board Summary					
Board Description	Member Count	Pay Per Day	Budgeted Days	Additional Pay	Total Cost
Workers Compensation Appeals Commission	4	400.00	13	0.00	22,376.64
Total					22,376.64

Component Detail All Funds
Department of Labor and Workforce Development

Component: Workers' Compensation Appeals Commission (2816)
RDU: Workers' Compensation (112)

Non-Formula Component

	FY2020 Actuals	FY2021 Conference Committee	FY2021 Authorized	FY2021 Management Plan	FY2022 Governor	FY2021 Management Plan vs FY2022 Governor	
71000 Personal Services	294.0	281.4	281.4	281.4	288.6	7.2	2.6%
72000 Travel	0.7	1.5	1.5	0.0	0.0	0.0	0.0%
73000 Services	44.0	138.0	138.0	139.5	133.0	-6.5	-4.7%
74000 Commodities	6.3	5.0	5.0	5.0	5.0	0.0	0.0%
75000 Capital Outlay	0.0	0.0	0.0	0.0	0.0	0.0	0.0%
77000 Grants, Benefits	0.0	0.0	0.0	0.0	0.0	0.0	0.0%
78000 Miscellaneous	0.0	0.0	0.0	0.0	0.0	0.0	0.0%
Totals	345.0	425.9	425.9	425.9	426.6	0.7	0.2%
Fund Sources:							
1157 Wrkrs Safe (DGF)	345.0	425.9	425.9	425.9	426.6	0.7	0.2%
Unrestricted General (UGF)	0.0	0.0	0.0	0.0	0.0	0.0	0.0%
Designated General (DGF)	345.0	425.9	425.9	425.9	426.6	0.7	0.2%
Other Funds	0.0	0.0	0.0	0.0	0.0	0.0	0.0%
Federal Funds	0.0	0.0	0.0	0.0	0.0	0.0	0.0%
Positions:							
Permanent Full Time	2	2	2	2	2	0	0.0%
Permanent Part Time	0	0	0	0	0	0	0.0%
Non Permanent	0	0	0	0	0	0	0.0%

Change Record Detail - Multiple Scenarios with Descriptions
Department of Labor and Workforce Development

Component: Workers' Compensation Appeals Commission (2816)

RDU: Workers' Compensation (112)

Scenario/Change Record Title	Trans Type	Totals	Personal Services	Travel	Services	Commodities	Capital Outlay	Grants, Benefits	Miscellaneous	Positions		NP
										PFT	PPT	
***** Changes From FY2021 Conference Committee To FY2021 Authorized *****												
Conference Committee												
1157 Wrkrs Safe	ConfCom	425.9	281.4	1.5	138.0	5.0	0.0	0.0	0.0	2	0	0
		425.9										
Subtotal		425.9	281.4	1.5	138.0	5.0	0.0	0.0	0.0	2	0	0
***** Changes From FY2021 Authorized To FY2021 Management Plan *****												
Align Authority with Anticipated Expenditures												
	LIT	0.0	0.0	-1.5	1.5	0.0	0.0	0.0	0.0	0	0	0
Transfer authority from travel to cover anticipated services costs as no travel is expected for this component in fiscal year 2021.												
Subtotal		425.9	281.4	0.0	139.5	5.0	0.0	0.0	0.0	2	0	0
***** Changes From FY2021 Management Plan To FY2022 Governor *****												
FY2022 Salary Adjustments												
1157 Wrkrs Safe	SalAdj	0.7	0.7	0.0	0.0	0.0	0.0	0.0	0.0	0	0	0
FY2022 1% COLA for ASE/General Government (GG/GP/GY/GZ): \$0.7.												
Transfer Authority from Services to Personal Services to Reflect Anticipated Expenditures												
	LIT	0.0	6.5	0.0	-6.5	0.0	0.0	0.0	0.0	0	0	0
Transfer authority from services for anticipated personal services costs. The remaining services authority is sufficient to cover anticipated expenditures.												
Totals		426.6	288.6	0.0	133.0	5.0	0.0	0.0	0.0	2	0	0

Line Item Detail (1676)
Department of Labor and Workforce Development
Travel

Component: Workers' Compensation Appeals Commission (2816)

Line Number	Line Name		FY2020 Actuals	FY2021 Management Plan	FY2022 Governor
2000	Travel		0.7	0.0	0.0
Object Class	Servicing Agency	Explanation	FY2020 Actuals	FY2021 Management Plan	FY2022 Governor
2000 Travel Detail Totals			0.7	0.0	0.0
2000	In-State Employee Travel	In-state employee travel to support the department's mission.	0.7	0.0	0.0

Line Item Detail (1676)
Department of Labor and Workforce Development
Services

Component: Workers' Compensation Appeals Commission (2816)

Line Number	Line Name		FY2020 Actuals	FY2021 Management Plan	FY2022 Governor
3000	Services		44.0	139.5	133.0
Object Class	Servicing Agency	Explanation	FY2020 Actuals	FY2021 Management Plan	FY2022 Governor
3000 Services Detail Totals			44.0	139.5	133.0
3002	Legal and Judicial Services	Custody care, attorney fees, expert and non-expert witnesses, mediation services, transcription and recording services, case costs, and settlement fees.	1.0	1.0	1.0
3004	Telecommunications	Local, long distance, and cellular telephone charges, television, data/network, telecommunication equipment, and other wireless charges from outside vendors.	0.3	0.3	0.3
3006	Delivery Services	Freight, courier services, and postage.	0.0	2.3	2.3
3010	Equipment/Machinery	Machinery, furniture, and equipment purchase, repairs, maintenance, rentals, and leases.	1.2	1.2	1.2
3011	Other Services	Other services, including interpreters; consulting; print, copy, and graphic services; and safety services.	0.0	0.0	3.5
3012	Inter-Agency Federal Indirect Rate Allocation	Labor - Management Services (335) Indirect cost allocation for departmental purchasing, accounting, reports, personnel consultation and other services provided by Management Services.	17.4	17.7	17.7
3013	Inter-Agency Data Processing Operations Allocation	Labor - Data Processing (334) Allocation for Data Processing network and support services.	0.0	8.5	8.5
3017	Inter-Agency Information Technology Non-Telecommunications	Admin - Department-wide Reimbursable services agreement with the Office of Information	5.9	0.0	0.0

Line Item Detail (1676)
Department of Labor and Workforce Development
Services

Component: Workers' Compensation Appeals Commission (2816)

Object Class	Servicing Agency	Explanation	FY2020 Actuals	FY2021 Management Plan	FY2022 Governor
3000 Services Detail Totals			44.0	139.5	133.0
		Technology rate for non-telecommunications support, including software and computer services.			
3018	Inter-Agency Information Technology Telecommunications	Admin - Department-wide	1.9	1.9	1.9
3021	Inter-Agency Mail	Admin - Department-wide	0.1	0.1	0.1
3022	Inter-Agency Human Resources	Admin - Department-wide	2.2	1.4	1.4
3023	Inter-Agency Building Leases	Admin - Department-wide	13.5	13.5	13.5
3025	Inter-Agency Auditing	Admin - Department-wide	0.1	0.1	0.1
3026	Inter-Agency Insurance	Admin - Department-wide	0.1	0.1	0.1
3027	Inter-Agency Financial	Admin - Department-wide	0.3	0.3	0.3
3027	Inter-Agency Financial	Admin - Department-wide	0.0	1.0	1.0

Line Item Detail (1676)
Department of Labor and Workforce Development
Services

Component: Workers' Compensation Appeals Commission (2816)

Object Class	Servicing Agency	Explanation	FY2020 Actuals	FY2021 Management Plan	FY2022 Governor	
3000 Services Detail Totals			44.0	139.5	133.0	
		with Shared Services of Alaska for travel and accounts payable services.				
3028	Inter-Agency Americans with Disabilities Act Compliance	Admin - Department-wide	Reimbursable services agreement with the Department of Administration for Americans with Disabilities Act (ADA) services.	0.0	0.1	0.1
3030	Inter-Agency Hearing/Mediation	Admin - Department-wide	Reimbursable services agreement with Department of Administration for hearing and mediation services.	0.0	90.0	80.0

Line Item Detail (1676)
Department of Labor and Workforce Development
Commodities

Component: Workers' Compensation Appeals Commission (2816)

Line Number	Line Name		FY2020 Actuals	FY2021 Management Plan	FY2022 Governor
4000	Commodities		6.3	5.0	5.0
Object Class	Servicing Agency	Explanation	FY2020 Actuals	FY2021 Management Plan	FY2022 Governor
		4000 Commodities Detail Totals	6.3	5.0	5.0
4000	Business	General business supplies such as office consumables and computer equipment.	6.3	5.0	5.0

Revenue Detail (1681)
Department of Labor and Workforce Development

Component: Workers' Compensation Appeals Commission (2816)

Revenue Type (OMB Fund Code) Revenue Source	Component	Comment	FY2020 Actuals	FY2021 Management Plan	FY2022 Governor
6157 Wrkrs Safe (1157 Wrkrs Safe)			0.6	1.0	1.0
6782 Workers Safety/Compensation Administration Account-Misc		Miscellaneous receipts, including copy fees.	0.6	1.0	1.0

Inter-Agency Services (1682)
Department of Labor and Workforce Development

Component: Workers' Compensation Appeals Commission (2816)

				FY2020 Actuals	FY2021 Management Plan	FY2022 Governor
Component Totals				41.5	134.7	124.7
With Department of Labor and Workforce Development				17.4	26.2	26.2
With Department of Administration				24.1	108.5	98.5
Object Class	Servicing Agency	Explanation		FY2020 Actuals	FY2021 Management Plan	FY2022 Governor
3012	Inter-Agency Federal Indirect Rate Allocation	Labor - Management Services (335)	Indirect cost allocation for departmental purchasing, accounting, reports, personnel consultation and other services provided by Management Services.	17.4	17.7	17.7
3013	Inter-Agency Data Processing Operations Allocation	Labor - Data Processing (334)	Allocation for Data Processing network and support services.	0.0	8.5	8.5
3017	Inter-Agency Information Technology Non-Telecommunications	Admin - Department-wide	Reimbursable services agreement with the Office of Information Technology rate for non-telecommunications support, including software and computer services.	5.9	0.0	0.0
3018	Inter-Agency Information Technology Telecommunications	Admin - Department-wide	Reimbursable services agreement with the Office of Information Technology for telecommunication support.	1.9	1.9	1.9
3021	Inter-Agency Mail	Admin - Department-wide	Reimbursable services agreement with Shared Services of Alaska for central mailroom support and services.	0.1	0.1	0.1
3022	Inter-Agency Human Resources	Admin - Department-wide	Reimbursable services agreement with the Division of Personnel and Labor Relations for human resources and personnel services.	2.2	1.4	1.4
3023	Inter-Agency Building Leases	Admin - Department-wide	State-owned facility space rent or other property leases.	13.5	13.5	13.5
3025	Inter-Agency Auditing	Admin - Department-wide	Reimbursable services agreement	0.1	0.1	0.1

Inter-Agency Services (1682)
Department of Labor and Workforce Development

Component: Workers' Compensation Appeals Commission (2816)

Object Class	Servicing Agency	Explanation	FY2020 Actuals	FY2021 Management Plan	FY2022 Governor
3026	Inter-Agency Insurance	Admin - Department-wide			
		with the Department of Administration for auditing services, including federal compliance audits.			
		Reimbursable services agreement with the Division of Risk Management for risk management insurance charges for leased buildings, repossessed properties, public official bonds, and overhead.	0.1	0.1	0.1
3027	Inter-Agency Financial	Admin - Department-wide			
		Reimbursable services agreement with the Division of Finance for system services for State accounting and payroll (IRIS), and reporting (ALDER) systems.	0.3	0.3	0.3
3027	Inter-Agency Financial	Admin - Department-wide			
		Reimbursable services agreement with Shared Services of Alaska for travel and accounts payable services.	0.0	1.0	1.0
3028	Inter-Agency Americans with Disabilities Act Compliance	Admin - Department-wide			
		Reimbursable services agreement with the Department of Administration for Americans with Disabilities Act (ADA) services.	0.0	0.1	0.1
3030	Inter-Agency Hearing/Mediation	Admin - Department-wide			
		Reimbursable services agreement with Department of Administration for hearing and mediation services.	0.0	90.0	80.0

Personal Services Expenditure Detail
Department of Labor and Workforce Development

Scenario: FY2022 Governor (17280)
Component: Workers' Compensation Appeals Commission (2816)
RDU: Workers' Compensation (112)

PCN	Job Class Title	Time Status	Retire Code	Barg Unit	Location	Salary Sched	Range / Step	Comp Months	Split / Count	Annual Salaries	COLA	Premium Pay	Annual Benefits	Total Costs	UGF Amount
07-3067	Law Office Assistant II	FT	A	GP	Anchorage	200	13J	12.0		53,918	725	0	37,327	91,970	0
07-X001	Chair, Wkrs Comp Appeals Comm	FT	A	XE	Anchorage	N00	27E / F	12.0		121,498	0	0	60,457	181,955	0

		Total Positions	New	Deleted	Total Salary Costs:	175,416
					Total COLA:	725
					Total Premium Pay:	0
					Total Benefits:	97,784
					Total Pre-Vacancy:	273,925
					Minus Vacancy Adjustment of 2.82%:	(7,727)
					Total Post-Vacancy:	266,198
					Plus Lump Sum Premium Pay:	0
					Plus Board Honoraria Pay:	22,377
					Personal Services Line 100:	288,575

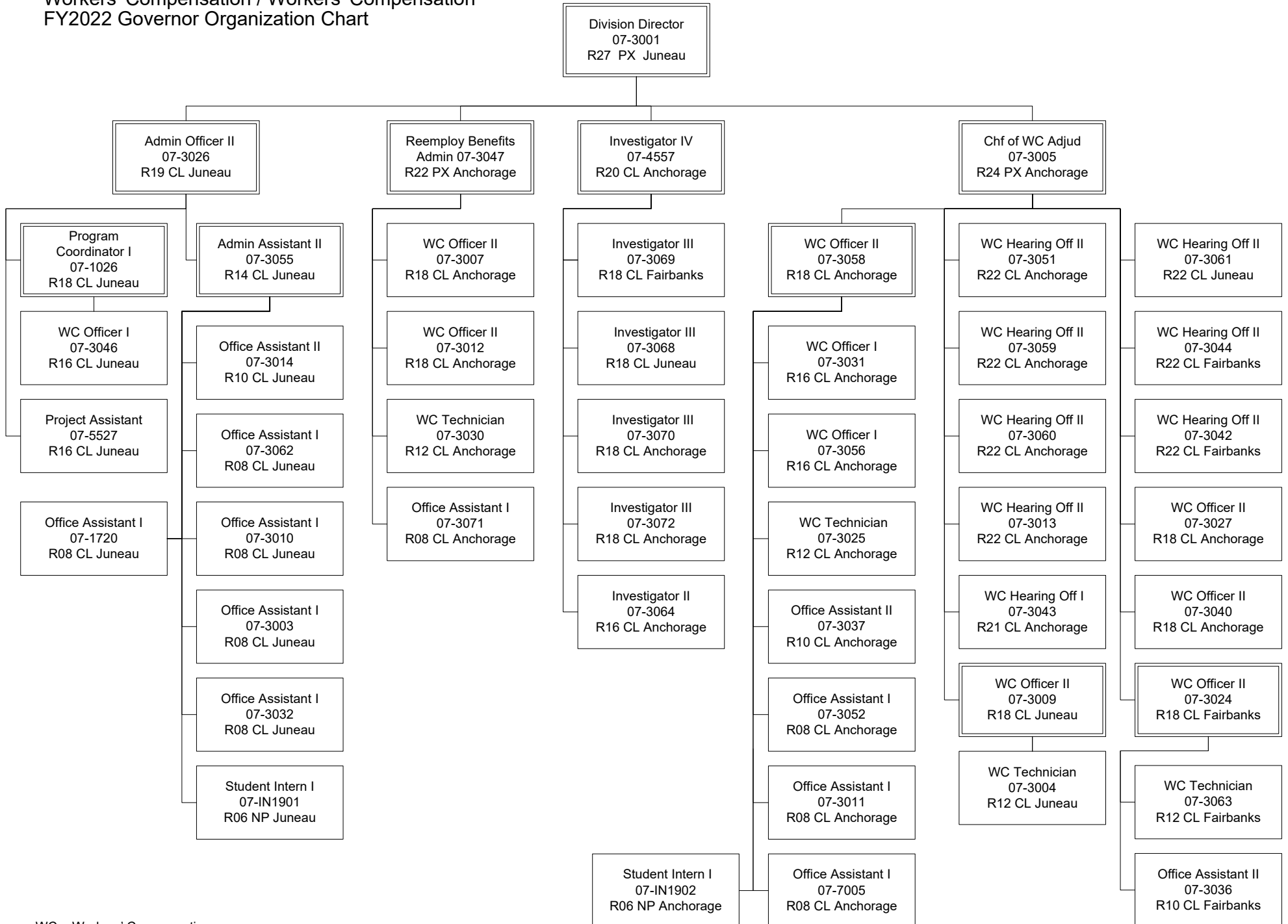
Full Time Positions:	2	0	0
Part Time Positions:	0	0	0
Non Permanent Positions:	0	0	0
Positions in Component:	2	0	0

Total Component Months:	24.0
--------------------------------	------

PCN Funding Sources:	Pre-Vacancy	Post-Vacancy	Percent
1157 Workers Safety and Compensation Administration Account	273,925	266,198	100.00%
Total PCN Funding:	273,925	266,198	100.00%

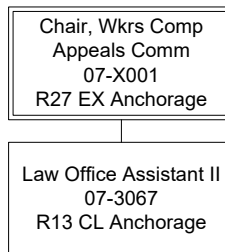
Note: If a position is split, an asterisk (*) will appear in the Split/Count column. If the split position is also counted in the component, two asterisks (**) will appear in this column. [No valid job title] appearing in the Job Class Title indicates that the PCN has an invalid class code or invalid range for the class code effective date of this scenario.

Department of Labor and Workforce Development
 Workers' Compensation / Workers' Compensation
 FY2022 Governor Organization Chart

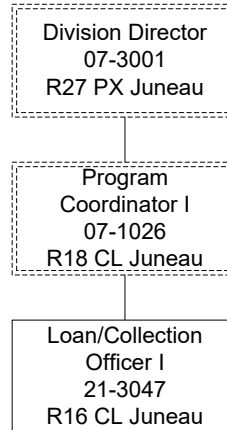


WC = Workers' Compensation

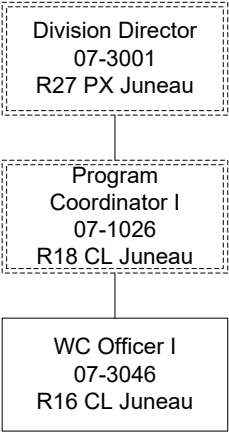
Department of Labor and Workforce Development
Workers' Compensation / Workers' Compensation Appeals Commission
FY2022 Governor Organization Chart



Department of Labor and Workforce Development
Workers' Compensation / Workers' Compensation Benefits Guaranty Fund
FY2022 Governor Organization Chart



Department of Labor and Workforce Development
Workers' Compensation / Workers' Compensation Second Injury Fund
FY2022 Governor Organization Chart



Department of Labor and Workforce Development
Workers' Compensation / Workers' Compensation Fishermen's Fund
FY2022 Governor Organization Chart

