

State of Alaska
FY2022 Governor's Operating Budget

Department of Labor and Workforce Development
Mechanical Inspection
Component Budget Summary

Component: Mechanical Inspection

Contribution to Department's Mission

Reduce hazards to life and property posed by unsafe boilers, pressure vessels, elevators, escalators, wheelchair lifts, recreational devices, and electrical and plumbing work.

Core Services

- Ensure boilers, pressure vessels, elevators, escalators, wheelchair lifts, recreational devices, and electrical and plumbing installations meet codes adopted by Alaska Statute.
- Ensure individuals engaged in electrical, plumbing, power line, boiler, asbestos, hazardous paint and explosive work have an appropriate certificate of fitness.
- Provide assistance to the Department of Revenue, Child Support Enforcement Division, by identifying certificate of fitness applicants who are in arrears on child support payments.
- Provide investigative and enforcement services to ensure that electricians, plumbers, construction contractors and electrical/mechanical administrators have proper certificates and licenses.

Major Component Accomplishments in 2020

- Assigned staff conducted a total of 6,796 boiler, elevator, electrical, and plumbing inspections.
- Identified 963 code violations.
- Conducted 2,508 on-site construction project visits statewide to ensure contractor-licensing and certificate of fitness compliance, which resulted in 147 enforcement actions.

Key Component Challenges

The Mechanical Inspection component is challenged to continue providing onsite inspection and education to Alaska's communities given the high cost of rural travel.

Significant Changes in Results to be Delivered in FY2022

No significant changes in results to be delivered are anticipated.

Statutory and Regulatory Authority

Statutory Authority:

AS 05.20.010 - .120	Recreational Devices
AS 08.18.011 - .171	Construction Contractors
AS 18.31.010 - .500	Asbestos Health Hazard Abatement
AS 08.52.010 - .100	Explosives Handlers
AS 18.60.180 - .395	Boilers
AS 18.60.580 - .660	Electrical Safety
AS 18.60.670 - .695	High Voltage Lines
AS 18.60.705 - .740	Plumbing Code
AS 18.60.800 - .820	Elevators
AS 18.62.010 - .080	Certificate of Fitness
AS 18.63.010 - .100	Hazardous Painting Certification
AS 23.05.060	Certificate of Fitness - Powers of the Department
AS 25.27.244	Certificate of Fitness - Child Support Enforcement
AS 44.31.025	Building Safety Account
AS 44.62.450	Hearings - Amusement park/tramway rides

AS 45.45.910

Electrical Safety - Sale or transfer of consumer electrical products

Administrative Regulations:

8 AAC 61.600 - .790	Asbestos Abatement Certification
8 AAC 61.800 - .890	Painting Certification
8 AAC 62.010 - .070	Explosives Handlers
8 AAC 63.010 - .030	Plumbing Code
8 AAC 70.010 - .090	Electrical Safety
8 AAC 77.005 - .905	Elevator Safety
8 AAC 78.010 - .900	Amusement Rides and Tramways
8 AAC 80.010 - .900	Boilers & Pressure Vessels
8 AAC 90.105 - .900	Certificates of Fitness
12 AAC 21.010 - .990	Construction Contractors

Contact Information

Contact: Joseph Knowles, Director
Phone: (907) 269-4961
E-mail: joseph.knowles@alaska.gov

Mechanical Inspection Personal Services Information				
Authorized Positions			Personal Services Costs	
	<u>FY2021</u> <u>Management</u> <u>Plan</u>	<u>FY2022</u> <u>Governor</u>		
Full-time	21	21	Annual Salaries	1,527,189
Part-time	0	0	COLA	8,884
Nonpermanent	0	0	Premium Pay	12,674
			Annual Benefits	939,424
			<i>Less 3.34% Vacancy Factor</i>	(83,171)
			Lump Sum Premium Pay	0
Totals	21	21	Total Personal Services	2,405,000

Position Classification Summary					
Job Class Title	Anchorage	Fairbanks	Juneau	Others	Total
Accounting Technician I	2	0	0	0	2
Administrative Assistant I	1	0	0	0	1
B&P Vsl Insp I	2	1	0	2	5
B&P Vsl Insp II	1	0	0	0	1
Investigator III	1	0	0	0	1
Mechanical Inspection Manager	1	0	0	0	1
Occupational License Examiner	1	0	0	0	1
SIC Elect Insp	0	0	1	2	3
SIC Elevat Insp	0	1	0	2	3
SIC Plumb Insp	0	1	0	2	3
Totals	9	3	1	8	21

Component Detail All Funds
Department of Labor and Workforce Development

Component: Mechanical Inspection (346)
RDU: Labor Standards and Safety (113)

Non-Formula Component

	FY2020 Actuals	FY2021 Conference Committee	FY2021 Authorized	FY2021 Management Plan	FY2022 Governor	FY2021 Management Plan vs FY2022 Governor	
71000 Personal Services	2,090.7	2,396.2	2,396.2	2,396.2	2,405.0	8.8	0.4%
72000 Travel	85.9	115.0	115.0	115.0	115.0	0.0	0.0%
73000 Services	352.1	444.2	444.2	444.2	444.2	0.0	0.0%
74000 Commodities	19.4	20.0	20.0	20.0	20.0	0.0	0.0%
75000 Capital Outlay	0.0	0.0	0.0	0.0	0.0	0.0	0.0%
77000 Grants, Benefits	0.0	0.0	0.0	0.0	0.0	0.0	0.0%
78000 Miscellaneous	0.0	0.0	0.0	0.0	0.0	0.0	0.0%
Totals	2,548.1	2,975.4	2,975.4	2,975.4	2,984.2	8.8	0.3%
Fund Sources:							
1005 GF/Prgm (DGF)	86.6	133.5	133.5	133.5	134.3	0.8	0.6%
1007 I/A Rcpts (Other)	531.2	712.2	712.2	712.2	714.5	2.3	0.3%
1172 Bldg Safe (DGF)	1,930.3	2,129.7	2,129.7	2,129.7	2,135.4	5.7	0.3%
Unrestricted General (UGF)	0.0	0.0	0.0	0.0	0.0	0.0	0.0%
Designated General (DGF)	2,016.9	2,263.2	2,263.2	2,263.2	2,269.7	6.5	0.3%
Other Funds	531.2	712.2	712.2	712.2	714.5	2.3	0.3%
Federal Funds	0.0	0.0	0.0	0.0	0.0	0.0	0.0%
Positions:							
Permanent Full Time	21	21	21	21	21	0	0.0%
Permanent Part Time	0	0	0	0	0	0	0.0%
Non Permanent	0	0	0	0	0	0	0.0%

Change Record Detail - Multiple Scenarios with Descriptions
Department of Labor and Workforce Development

Component: Mechanical Inspection (346)
RDU: Labor Standards and Safety (113)

Scenario/Change Record Title	Trans Type	Totals	Personal Services	Travel	Services	Commodities	Capital Outlay	Grants, Benefits	Miscellaneous	Positions		NP
										PFT	PPT	
***** Changes From FY2021 Conference Committee To FY2021 Authorized *****												
Conference Committee												
	ConfCom	2,975.4	2,396.2	115.0	444.2	20.0	0.0	0.0	0.0	21	0	0
1005 GF/Prgm		133.5										
1007 I/A Rcpts		712.2										
1172 Bldg Safe		2,129.7										
Subtotal		2,975.4	2,396.2	115.0	444.2	20.0	0.0	0.0	0.0	21	0	0
***** Changes From FY2021 Management Plan To FY2022 Governor *****												
FY2022 Salary Adjustments												
	SalAdj	8.8	8.8	0.0	0.0	0.0	0.0	0.0	0.0	0	0	0
1005 GF/Prgm		0.8										
1007 I/A Rcpts		2.3										
1172 Bldg Safe		5.7										
FY2022 1% COLA for ASEA/General Government (GG/GP/GY/GZ): \$8.8.												
Totals		2,984.2	2,405.0	115.0	444.2	20.0	0.0	0.0	0.0	21	0	0

Line Item Detail (1676)
Department of Labor and Workforce Development
Travel

Component: Mechanical Inspection (346)

Line Number	Line Name		FY2020 Actuals	FY2021 Management Plan	FY2022 Governor
2000	Travel		85.9	115.0	115.0
Object Class	Servicing Agency	Explanation	FY2020 Actuals	FY2021 Management Plan	FY2022 Governor
2000 Travel Detail Totals			85.9	115.0	115.0
2000	In-State Employee Travel	In-state employee travel to support the department's mission.	84.4	113.9	113.9
2002	Out of State Employee Travel	Out of state employee travel.	1.4	0.6	0.6
2006	Other Travel Costs	Cash advance fees.	0.1	0.5	0.5

Line Item Detail (1676)
Department of Labor and Workforce Development
Services

Component: Mechanical Inspection (346)

Line Number	Line Name		FY2020 Actuals	FY2021 Management Plan	FY2022 Governor
3000	Services		352.1	444.2	444.2
Object Class	Servicing Agency	Explanation	FY2020 Actuals	FY2021 Management Plan	FY2022 Governor
3000 Services Detail Totals			352.1	444.2	444.2
3000	Education Services	Training, education, and memberships.	0.6	6.0	6.0
3004	Telecommunications	Local, long distance, and cellular telephone charges, television, data/network, telecommunication equipment, and other wireless charges from outside vendors.	6.0	6.5	6.5
3006	Delivery Services	Freight, courier services, and postage.	0.3	6.5	6.5
3007	Advertising and Promotions	Advertising for regulation changes, board meetings, recruitments, or other public notices.	0.7	2.0	2.0
3008	Utilities	Electricity, heating fuel, water, sewage, recycling, heating fuel, trash, and confidential document and other disposal services.	0.8	0.8	0.8
3009	Structure/Infrastructure/Land	Room rental for training and seminar space, board or council meetings, or storage and archiving needs.	2.9	3.0	3.0
3010	Equipment/Machinery	Machinery, furniture, and equipment purchase, repairs, maintenance, rentals, and leases.	4.6	6.0	6.0
3011	Other Services	Fees for elevator inspection data entry; printing of forms, code books, and educational materials; credit card service cost.	10.0	22.6	22.6
3012	Inter-Agency Federal Indirect Rate	Labor - Management Services (335) Indirect cost allocation for	124.0	147.0	147.0

Line Item Detail (1676)
Department of Labor and Workforce Development
Services

Component: Mechanical Inspection (346)

Object Class	Servicing Agency	Explanation	FY2020 Actuals	FY2021 Management Plan	FY2022 Governor
3000 Services Detail Totals			352.1	444.2	444.2
Allocation		departmental purchasing, accounting, reports, personnel consultation and other services provided by Management Services.			
3013	Inter-Agency Data Processing Operations Allocation	Labor - Data Processing (334) Allocation for Data Processing network and support services.	26.4	32.0	32.0
3016	Inter-Agency Economic Development	Labor - Data Processing (334) Reimbursable services agreement with Data Processing for Certificate of Fitness system support.	0.0	5.0	5.0
3017	Inter-Agency Information Technology Non-Telecommunications	Admin - Department-wide Reimbursable services agreement with the Office of Information Technology rate for non-telecommunications support, including software and computer services.	60.0	70.0	70.0
3018	Inter-Agency Information Technology Telecommunications	Admin - Department-wide Reimbursable services agreement with the Office of Information Technology for telecommunication support.	9.3	10.0	10.0
3021	Inter-Agency Mail	Admin - Department-wide Reimbursable services agreement with Shared Services of Alaska for central mailroom support and services.	0.0	1.1	1.1
3022	Inter-Agency Human Resources	Admin - Department-wide Reimbursable services agreement with the Division of Personnel and Labor Relations for human resources and personnel services.	22.8	17.2	17.2
3023	Inter-Agency Building Leases	Admin - Department-wide State-owned facility space rent or other property leases.	16.9	16.9	16.9
3023	Inter-Agency Building Leases	Trans - Department-wide State-owned facility space rent or other property leases.	2.9	2.9	2.9
3024	Inter-Agency Legal	Law - Department-wide Reimbursable services agreement with the Department of Law for legal	13.4	12.0	12.0

Line Item Detail (1676)
Department of Labor and Workforce Development
Services

Component: Mechanical Inspection (346)

Object Class	Servicing Agency	Explanation	FY2020 Actuals	FY2021 Management Plan	FY2022 Governor	
3000 Services Detail Totals			352.1	444.2	444.2	
		services.				
3025	Inter-Agency Auditing	Admin - Department-wide	Reimbursable services agreement with the Department of Administration for auditing services, including federal compliance audits.	0.6	2.0	2.0
3026	Inter-Agency Insurance	Admin - Department-wide	Reimbursable services agreement with the Division of Risk Management for risk management insurance charges for leased buildings, repossessed properties, public official bonds, and overhead.	1.5	3.0	3.0
3027	Inter-Agency Financial	Admin - Department-wide	Reimbursable services agreement with the Division of Finance for system services for State accounting and payroll (IRIS), and reporting (ALDER) systems.	0.0	2.6	2.6
3027	Inter-Agency Financial	Admin - Department-wide	Reimbursable services agreement with Shared Services of Alaska for travel and accounts payable services.	0.0	12.0	12.0
3028	Inter-Agency Americans with Disabilities Act Compliance	Admin - Department-wide	Reimbursable services agreement with the Department of Administration for Americans with Disabilities Act (ADA) services.	0.0	0.1	0.1
3037	State Equipment Fleet	Trans - Department-wide	State equipment fleet fixed cost services for equipment replacement, maintenance and fuel, both allowable and non-allowable.	48.4	57.0	57.0

Line Item Detail (1676)
Department of Labor and Workforce Development
Commodities

Component: Mechanical Inspection (346)

Line Number	Line Name		FY2020 Actuals	FY2021 Management Plan	FY2022 Governor
4000	Commodities		19.4	20.0	20.0
Object Class	Servicing Agency	Explanation	FY2020 Actuals	FY2021 Management Plan	FY2022 Governor
4000 Commodities Detail Totals			19.4	20.0	20.0
4000	Business	General business supplies such as office consumables and computer equipment.	17.8	18.6	18.6
4002	Household/Institutional	Protective clothing to perform on-site inspections.	0.9	1.4	1.4
4004	Safety	Safety gear and protective clothing.	0.7	0.0	0.0

Revenue Detail (1681)
Department of Labor and Workforce Development

Component: Mechanical Inspection (346)

Revenue Type (OMB Fund Code) Revenue Source	Component	Comment	FY2020 Actuals	FY2021 Management Plan	FY2022 Governor
5005 GF/Prgm (1005 GF/Prgm)			86.8	133.5	134.3
5101 Program Receipts Public Protection - Licenses and Permits		Program receipts from Certificates of Fitness fees.	86.8	133.5	134.3
5007 I/A Rcpts (1007 I/A Rcpts)			531.2	712.2	714.5
5301 Inter-Agency Receipts	Commerce - Department-wide	Reimbursable services agreement with Department of Commerce and Economic Development for contractor licensing enforcement, Electrical Administrator/Mechanical Administrator (EA/MA) inspection duties, and accident investigation related to EA/MA matters.	153.2	310.0	312.3
5301 Inter-Agency Receipts	Labor - Occupational Safety and Health (970)	Reimbursable services agreement with Occupational Safety and Health for a portion of elevator, boiler/pressure vessel, electrical and plumbing inspections.	156.9	335.0	335.0
5301 Inter-Agency Receipts	Rev - Department-wide	Reimbursable services agreement with Department of Revenue, Child Support Services component, for implementation of license actions as outlined in AS 25.27.244 for Certificates of Fitness.	221.1	67.2	67.2
6172 Bldg Safe (1172 Bldg Safe)			1,940.9	2,129.7	2,135.4
6820 Building Safety Account - Chrgs for Srvcs Misc		Building Safety Account (AS 44.31.025) revenue is generated from fees for inspections of boilers, pressure vessels, and lifting devices such as elevators, and fees for certificates of fitness for plumbers and electricians.	1,940.1	2,129.7	2,135.4
6822 Building Safety Account - Miscellaneous		Miscellaneous deposits in the Building Safety Account.	0.8	0.0	0.0

Revenue Detail (1681)
Department of Labor and Workforce Development

Component: Mechanical Inspection (346)

Inter-Agency Services (1682)
Department of Labor and Workforce Development

Component: Mechanical Inspection (346)

				FY2020 Actuals	FY2021 Management Plan	FY2022 Governor
Component Totals				326.2	390.8	390.8
With Department of Labor and Workforce Development				150.4	184.0	184.0
With Department of Administration				111.1	134.9	134.9
With Department of Transportation/Public Facilities				51.3	59.9	59.9
With Department of Law				13.4	12.0	12.0
Object Class	Servicing Agency	Explanation				
			FY2020 Actuals	FY2021 Management Plan	FY2022 Governor	
3012	Inter-Agency Federal Indirect Rate Allocation	Labor - Management Services (335)	Indirect cost allocation for departmental purchasing, accounting, reports, personnel consultation and other services provided by Management Services.	124.0	147.0	147.0
3013	Inter-Agency Data Processing Operations Allocation	Labor - Data Processing (334)	Allocation for Data Processing network and support services.	26.4	32.0	32.0
3016	Inter-Agency Economic Development	Labor - Data Processing (334)	Reimbursable services agreement with Data Processing for Certificate of Fitness system support.	0.0	5.0	5.0
3017	Inter-Agency Information Technology Non-Telecommunications	Admin - Department-wide	Reimbursable services agreement with the Office of Information Technology rate for non-telecommunications support, including software and computer services.	60.0	70.0	70.0
3018	Inter-Agency Information Technology Telecommunications	Admin - Department-wide	Reimbursable services agreement with the Office of Information Technology for telecommunication support.	9.3	10.0	10.0
3021	Inter-Agency Mail	Admin - Department-wide	Reimbursable services agreement with Shared Services of Alaska for central mailroom support and services.	0.0	1.1	1.1
3022	Inter-Agency Human Resources	Admin - Department-wide	Reimbursable services agreement	22.8	17.2	17.2

Inter-Agency Services (1682)
Department of Labor and Workforce Development

Component: Mechanical Inspection (346)

Object Class	Servicing Agency	Explanation	FY2020 Actuals	FY2021 Management Plan	FY2022 Governor
		with the Division of Personnel and Labor Relations for human resources and personnel services.			
3023	Inter-Agency Building Leases	Admin - Department-wide	16.9	16.9	16.9
3023	Inter-Agency Building Leases	Trans - Department-wide	2.9	2.9	2.9
3024	Inter-Agency Legal	Law - Department-wide	13.4	12.0	12.0
3025	Inter-Agency Auditing	Admin - Department-wide	0.6	2.0	2.0
3026	Inter-Agency Insurance	Admin - Department-wide	1.5	3.0	3.0
3027	Inter-Agency Financial	Admin - Department-wide	0.0	2.6	2.6
3027	Inter-Agency Financial	Admin - Department-wide	0.0	12.0	12.0
3028	Inter-Agency Americans with Disabilities Act Compliance	Admin - Department-wide	0.0	0.1	0.1
3037	State Equipment Fleet	Trans - Department-wide	48.4	57.0	57.0

Inter-Agency Services (1682)
Department of Labor and Workforce Development

Component: Mechanical Inspection (346)

Object Class	Servicing Agency	Explanation	FY2020 Actuals	FY2021 Management Plan	FY2022 Governor
		and non-allowable.			

Personal Services Expenditure Detail
Department of Labor and Workforce Development

Scenario: FY2022 Governor (17280)
Component: Mechanical Inspection (346)
RDU: Labor Standards and Safety (113)

PCN	Job Class Title	Time Status	Retire Code	Barg Unit	Location	Salary Sched	Range / Step	Comp Months	Split / Count	Annual Salaries	COLA	Premium Pay	Annual Benefits	Total Costs	UGF Amount
07-1212	Occupational License Examiner	FT	A	GP	Anchorage	200	14A / B	12.0		46,304	622	0	34,710	81,636	0
07-2014	Administrative Assistant I	FT	A	GP	Juneau	205	12A	3.0	*	10,545	189	0	8,323	19,057	0
07-2016	Regulations Specialist II	FT	A	GP	Juneau	205	16C	2.0	*	9,870	164	0	6,525	16,559	0
07-2040	Administrative Officer II	FT	A	SS	Juneau	205	19D	3.0	*	20,196	0	0	11,651	31,847	0
07-2055	Administrative Assistant III	FT	A	SS	Anchorage	600	15A / B	3.0	*	13,222	0	0	9,253	22,475	0
07-2069	SIC Elect Insp	FT	A	LL	Palmer	2BB	49D / E	12.0		70,656	0	497	43,149	114,302	0
07-2078	Investigator III	FT	A	GP	Anchorage	200	18F / G	12.0		71,085	963	544	43,416	116,008	0
07-2079	SIC Elevat Insp	FT	A	LL	Palmer	2BB	49K	12.0		79,295	0	571	46,144	126,010	0
07-4004	Administrative Assistant I	FT	A	GP	Anchorage	200	12A	3.0	*	10,067	182	0	8,159	18,408	0
07-4014	Division Director - Px	FT	A	XE	Anchorage	N00	27B / C	3.0	*	27,578	0	0	14,153	41,731	0
07-4016	Mechanical Inspection Manager	FT	A	SS	Anchorage	200	22D / E	12.0		94,531	0	0	51,330	145,861	0
07-4028	Administrative Assistant I	FT	A	GP	Anchorage	200	12B	5.4	**	18,700	336	0	14,885	33,921	0
07-4507	Accounting Technician I	FT	A	GP	Anchorage	200	12C / D	12.0		42,455	571	0	33,386	76,412	0
07-4508	B&P Vsl Insp I	FT	A	GP	Anchorage	200	19C / D	12.0		70,488	961	1,050	43,385	115,884	0
07-4509	B&P Vsl Insp II	FT	A	SS	Anchorage	200	20K / L	12.0		94,245	0	1,328	51,688	147,261	0
07-4511	SIC Elevat Insp	FT	A	LL	Fairbanks	2EE	49D / E	12.0		72,266	0	518	43,709	116,493	0
07-4519	SIC Elect Insp	FT	A	LL	Juneau	2AA	49K	12.0		78,318	0	564	45,806	124,688	0
07-4520	SIC Plumb Insp	FT	A	LL	Fairbanks	2EE	49A / B	12.0		63,161	0	485	40,568	104,214	0
07-4523	SIC Plumb Insp	FT	A	LL	Palmer	2BB	49C / D	12.0		68,632	0	480	42,447	111,559	0
07-4526	SIC Elect Insp	FT	A	LL	Palmer	2BB	49F / J	12.0		74,878	0	531	44,612	120,021	0
07-4527	B&P Vsl Insp I	FT	A	GP	Palmer	200	19C / D	12.0		69,009	941	1,050	42,877	113,877	0
07-4541	B&P Vsl Insp I	FT	A	GP	Anchorage	200	19K / L	12.0		86,505	1,180	1,290	48,974	137,949	0
07-4544	SIC Plumb Insp	FT	A	LL	Palmer	2BB	49C / D	12.0		66,726	0	480	41,792	108,998	0
07-4545	B&P Vsl Insp I	FT	A	GP	Fairbanks	203	19E / F	12.0		77,847	1,062	1,157	45,952	126,018	0
07-4546	B&P Vsl Insp I	FT	A	GP	Kenai	200	19G	12.0		78,020	1,065	1,200	46,026	126,311	0
07-4547	SIC Elevat Insp	FT	A	LL	Palmer	2BB	49A / B	12.0		64,405	0	929	41,148	106,482	0
07-4548	Accounting Technician I	FT	A	GP	Anchorage	200	12G	12.0		48,185	648	0	35,356	84,189	0

Note: If a position is split, an asterisk (*) will appear in the Split/Count column. If the split position is also counted in the component, two asterisks (**) will appear in this column. [No valid job title] appearing in the Job Class Title indicates that the PCN has an invalid class code or invalid range for the class code effective date of this scenario.

Personal Services Expenditure Detail
Department of Labor and Workforce Development

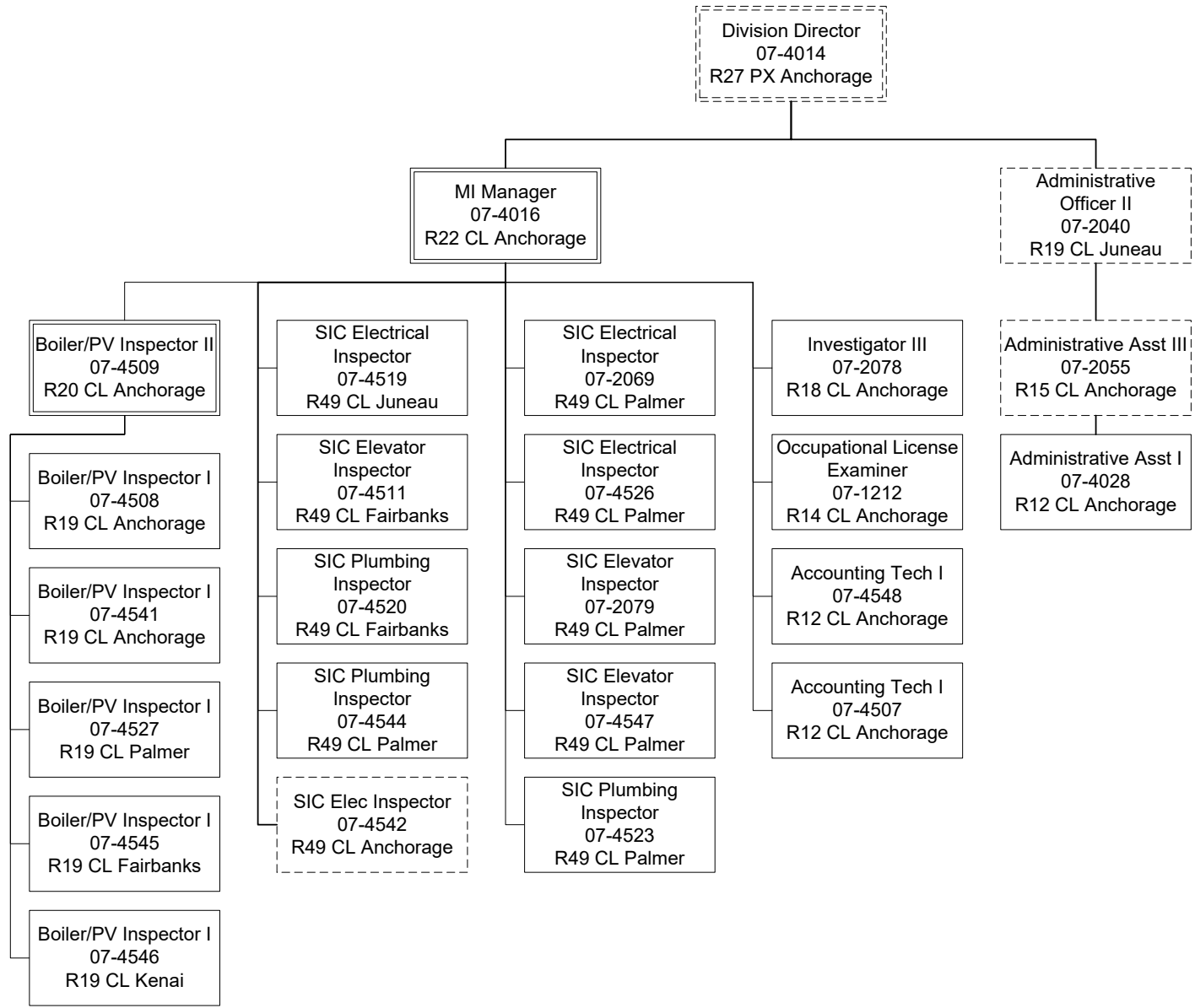
Scenario: FY2022 Governor (17280)
Component: Mechanical Inspection (346)
RDU: Labor Standards and Safety (113)

PCN	Job Class Title	Time Status	Retire Code	Barg Unit	Location	Salary Sched	Range / Step	Comp Months	Split / Count	Annual Salaries	COLA	Premium Pay	Annual Benefits	Total Costs	UGF Amount
		Total Positions	New	Deleted										Total Salary Costs:	1,527,189
														Total COLA:	8,884
	Full Time Positions:	21	0	0										Total Premium Pay:	12,674
	Part Time Positions:	0	0	0										Total Benefits:	939,424
	Non Permanent Positions:	0	0	0											
	Positions in Component:	21	0	0											
	Total Component Months:	262.4													
														Total Pre-Vacancy:	2,488,171
														Minus Vacancy Adjustment of 3.34%:	(83,171)
														Total Post-Vacancy:	2,405,000
														Plus Lump Sum Premium Pay:	0
														Personal Services Line 100:	2,405,000

PCN Funding Sources:	Pre-Vacancy	Post-Vacancy	Percent
1005 General Fund/Program Receipts	99,216	95,900	3.99%
1007 Interagency Receipts	683,455	660,609	27.47%
1172 Building Safety Account	1,705,500	1,648,491	68.54%
Total PCN Funding:	2,488,171	2,405,000	100.00%

Note: If a position is split, an asterisk (*) will appear in the Split/Count column. If the split position is also counted in the component, two asterisks (**) will appear in this column. [No valid job title] appearing in the Job Class Title indicates that the PCN has an invalid class code or invalid range for the class code effective date of this scenario.

Department of Labor and Workforce Development
 Labor Standards and Safety / Mechanical Inspection
 FY2022 Governor Organization Chart



PV = Pressure Vessel
 SIC = Safety Inspection and Compliance