

# **State of Alaska FY2022 Governor's Operating Budget**

## **Department of Public Safety Training Academy Recruit Sal. Component Budget Summary**

**Component: Training Academy Recruit Sal.**

**Contribution to Department's Mission**

Reflect personal service costs for recruits attending the DPS Academy.

**Major Component Accomplishments in 2020**

This component was created in FY2021.

**Key Component Challenges**

No key component challenges.

**Significant Changes in Results to be Delivered in FY2022**

No changes in results delivered.

**Statutory and Regulatory Authority**

No statutes and regulations.

**Contact Information**

**Contact:** Unknown, Unknown  
**Phone:** ( ) -  
**E-mail:** Unknown

Training Academy Recruit Sal. Personal Services Information					
Authorized Positions			Personal Services Costs		
	<u>FY2021</u> <u>Management</u> <u>Plan</u>	<u>FY2022</u> <u>Governor</u>			
Full-time	17	17	Annual Salaries		974,338
Part-time	0	0	COLA		40,613
Nonpermanent	0	0	Premium Pay		9,639
			Annual Benefits		608,022
			<i>Less 2.05% Vacancy Factor</i>		(33,512)
			Lump Sum Premium Pay		0
<b>Totals</b>	<b>17</b>	<b>17</b>	<b>Total Personal Services</b>		<b>1,599,100</b>

Position Classification Summary					
Job Class Title	Anchorage	Fairbanks	Juneau	Others	Total
State Trooper Recruit	0	0	0	17	17
<b>Totals</b>	<b>0</b>	<b>0</b>	<b>0</b>	<b>17</b>	<b>17</b>

**Component Detail All Funds**  
**Department of Public Safety**

**Component:** Training Academy Recruit Sal. (3280)  
**RDU:** Alaska State Troopers (160)

Non-Formula Component

	FY2020 Actuals	FY2021 Conference Committee	FY2021 Authorized	FY2021 Management Plan	FY2022 Governor	FY2021 Management Plan vs FY2022 Governor	
71000 Personal Services	0.0	1,559.3	1,559.3	1,559.3	1,599.1	39.8	2.6%
72000 Travel	0.0	0.0	0.0	0.0	0.0	0.0	0.0%
73000 Services	0.0	0.0	0.0	0.0	0.0	0.0	0.0%
74000 Commodities	0.0	0.0	0.0	0.0	0.0	0.0	0.0%
75000 Capital Outlay	0.0	0.0	0.0	0.0	0.0	0.0	0.0%
77000 Grants, Benefits	0.0	0.0	0.0	0.0	0.0	0.0	0.0%
78000 Miscellaneous	0.0	0.0	0.0	0.0	0.0	0.0	0.0%
<b>Totals</b>	<b>0.0</b>	<b>1,559.3</b>	<b>1,559.3</b>	<b>1,559.3</b>	<b>1,599.1</b>	<b>39.8</b>	<b>2.6%</b>
<b>Fund Sources:</b>							
1001 CBR Fund (UGF)	0.0	389.8	389.8	389.8	0.0	-389.8	-100.0%
1004 Gen Fund (UGF)	0.0	1,169.5	1,169.5	1,169.5	1,599.1	429.6	36.7%
<b>Unrestricted General (UGF)</b>	<b>0.0</b>	<b>1,559.3</b>	<b>1,559.3</b>	<b>1,559.3</b>	<b>1,599.1</b>	<b>39.8</b>	<b>2.6%</b>
<b>Designated General (DGF)</b>	<b>0.0</b>	<b>0.0</b>	<b>0.0</b>	<b>0.0</b>	<b>0.0</b>	<b>0.0</b>	<b>0.0%</b>
<b>Other Funds</b>	<b>0.0</b>	<b>0.0</b>	<b>0.0</b>	<b>0.0</b>	<b>0.0</b>	<b>0.0</b>	<b>0.0%</b>
<b>Federal Funds</b>	<b>0.0</b>	<b>0.0</b>	<b>0.0</b>	<b>0.0</b>	<b>0.0</b>	<b>0.0</b>	<b>0.0%</b>
<b>Positions:</b>							
Permanent Full Time	0	0	0	17	17	0	0.0%
Permanent Part Time	0	0	0	0	0	0	0.0%
Non Permanent	0	0	0	0	0	0	0.0%

**Change Record Detail - Multiple Scenarios with Descriptions**  
**Department of Public Safety**

**Component:** Training Academy Recruit Sal. (3280)  
**RDU:** Alaska State Troopers (160)

Scenario/Change Record Title	Trans Type	Totals	Personal Services	Travel	Services	Commodities	Capital Outlay	Grants, Benefits	Miscellaneous	Positions		NP
										PFT	PPT	
***** Changes From FY2021 Conference Committee To FY2021 Authorized *****												
<b>Conference Committee</b>												
	ConfCom	1,559.3	1,559.3	0.0	0.0	0.0	0.0	0.0	0.0	0	0	0
1001 CBR Fund		389.8										
1004 Gen Fund		1,169.5										
<b>Subtotal</b>		<b>1,559.3</b>	<b>1,559.3</b>	<b>0.0</b>	<b>0.0</b>	<b>0.0</b>	<b>0.0</b>	<b>0.0</b>	<b>0.0</b>	<b>0</b>	<b>0</b>	<b>0</b>
***** Changes From FY2021 Authorized To FY2021 Management Plan *****												
<b>Add 17 State Trooper Recruit Positions to Reflect Salary and Benefit Costs for Recruits</b>												
	PosAdj	0.0	0.0	0.0	0.0	0.0	0.0	0.0	0.0	17	0	0
<p>The Training Academy Recruit Salaries was created in FY2021 to reflect salary and benefit costs for recruits at the Public Safety Academy separately from the Alaska State Troopers Detachments which had previously absorbed these expenses. Recruits at the Academy are placed in positions colloquially known as "8000 series" (12-8XXX), which were previously unbudgeted. These positions are now being brought on budget under Training Academy Recruit Salaries. The 17 positions established for nine months represent an estimated total of 34 recruits between Fall and Spring Academy (4.5 months each).</p>												
<b>Subtotal</b>		<b>1,559.3</b>	<b>1,559.3</b>	<b>0.0</b>	<b>0.0</b>	<b>0.0</b>	<b>0.0</b>	<b>0.0</b>	<b>0.0</b>	<b>17</b>	<b>0</b>	<b>0</b>
***** Changes From FY2021 Management Plan To FY2022 Governor *****												
<b>FY2022 Salary Adjustments</b>												
	SalAdj	39.8	39.8	0.0	0.0	0.0	0.0	0.0	0.0	0	0	0
1004 Gen Fund		39.8										
FY2022 3% COLA for Public Safety Employees Association (AA/AP): \$39.8												
<b>Fund Source Adjustment of CBRF to UGF</b>												
	FndChg	0.0	0.0	0.0	0.0	0.0	0.0	0.0	0.0	0	0	0
1001 CBR Fund		-389.8										
1004 Gen Fund		389.8										
Replace Constitutional Budget Reserve Fund (CBRF) used as a one-time funding mechanism in FY2021.												
<b>Totals</b>		<b>1,599.1</b>	<b>1,599.1</b>	<b>0.0</b>	<b>0.0</b>	<b>0.0</b>	<b>0.0</b>	<b>0.0</b>	<b>0.0</b>	<b>17</b>	<b>0</b>	<b>0</b>

**Personal Services Expenditure Detail**  
**Department of Public Safety**

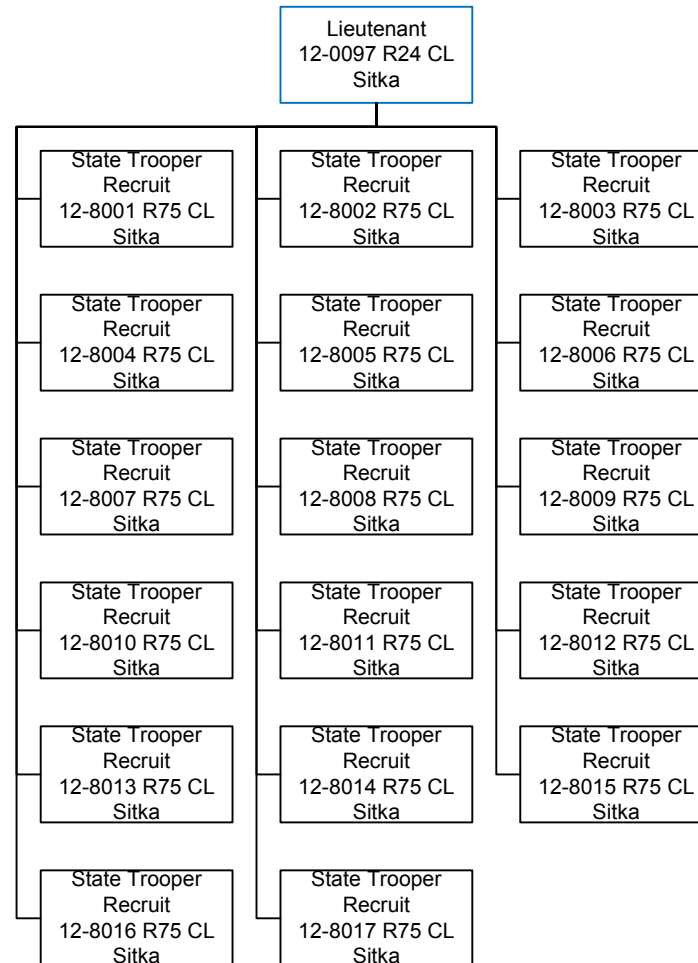
**Scenario:** FY2022 Governor (17280)  
**Component:** Training Academy Recruit Sal. (3280)  
**RDU:** Alaska State Troopers (160)

PCN	Job Class Title	Time Status	Retire Code	Barg Unit	Location	Salary Sched	Range / Step	Comp Months	Split / Count	Annual Salaries	COLA	Premium Pay	Annual Benefits	Total Costs	UGF Amount
12-8001	State Trooper Recruit	FT	A	AA	Sitka	105	75C	9.0		57,314	2,389	567	35,766	96,036	96,036
12-8002	State Trooper Recruit	FT	A	AA	Sitka	105	75C	9.0		57,314	2,389	567	35,766	96,036	96,036
12-8003	State Trooper Recruit	FT	A	AA	Sitka	105	75C	9.0		57,314	2,389	567	35,766	96,036	96,036
12-8004	State Trooper Recruit	FT	A	AA	Sitka	105	75C	9.0		57,314	2,389	567	35,766	96,036	96,036
12-8005	State Trooper Recruit	FT	A	AA	Sitka	105	75C	9.0		57,314	2,389	567	35,766	96,036	96,036
12-8006	State Trooper Recruit	FT	A	AA	Sitka	105	75C	9.0		57,314	2,389	567	35,766	96,036	96,036
12-8007	State Trooper Recruit	FT	A	AA	Sitka	105	75C	9.0		57,314	2,389	567	35,766	96,036	96,036
12-8008	State Trooper Recruit	FT	A	AA	Sitka	105	75C	9.0		57,314	2,389	567	35,766	96,036	96,036
12-8009	State Trooper Recruit	FT	A	AA	Sitka	105	75C	9.0		57,314	2,389	567	35,766	96,036	96,036
12-8010	State Trooper Recruit	FT	A	AA	Sitka	105	75C	9.0		57,314	2,389	567	35,766	96,036	96,036
12-8011	State Trooper Recruit	FT	A	AA	Sitka	105	75C	9.0		57,314	2,389	567	35,766	96,036	96,036
12-8012	State Trooper Recruit	FT	A	AA	Sitka	105	75C	9.0		57,314	2,389	567	35,766	96,036	96,036
12-8013	State Trooper Recruit	FT	A	AA	Sitka	105	75C	9.0		57,314	2,389	567	35,766	96,036	96,036
12-8014	State Trooper Recruit	FT	A	AA	Sitka	105	75C	9.0		57,314	2,389	567	35,766	96,036	96,036
12-8015	State Trooper Recruit	FT	A	AA	Sitka	105	75C	9.0		57,314	2,389	567	35,766	96,036	96,036
12-8016	State Trooper Recruit	FT	A	AA	Sitka	105	75C	9.0		57,314	2,389	567	35,766	96,036	96,036
12-8017	State Trooper Recruit	FT	A	AA	Sitka	105	75C	9.0		57,314	2,389	567	35,766	96,036	96,036

		Total Positions	New	Deleted	Total Salary Costs:	974,338
					Total COLA:	40,613
Full Time Positions:	17	0	0	Total Premium Pay:	9,639	
Part Time Positions:	0	0	0	Total Benefits:	608,022	
Non Permanent Positions:	0	0	0			
Positions in Component:	17	0	0	Total Pre-Vacancy:	1,632,612	
				Minus Vacancy Adjustment of 2.05%:	(33,512)	
				Total Post-Vacancy:	1,599,100	
				Plus Lump Sum Premium Pay:	0	
				Personal Services Line 100:	1,599,100	

PCN Funding Sources:	Pre-Vacancy	Post-Vacancy	Percent
1004 General Fund Receipts	1,632,612	1,599,100	100.00%
<b>Total PCN Funding:</b>	<b>1,632,612</b>	<b>1,599,100</b>	<b>100.00%</b>

Note: If a position is split, an asterisk (\*) will appear in the Split/Count column. If the split position is also counted in the component, two asterisks (\*\*) will appear in this column. [No valid job title] appearing in the Job Class Title indicates that the PCN has an invalid class code or invalid range for the class code effective date of this scenario.



Not counted in this RDU/  
component, shown for  
organizational hierarchy.