

State of Alaska
FY2022 Governor's Operating Budget

Department of Public Safety
Alaska State Trooper Detachments
Component Budget Summary

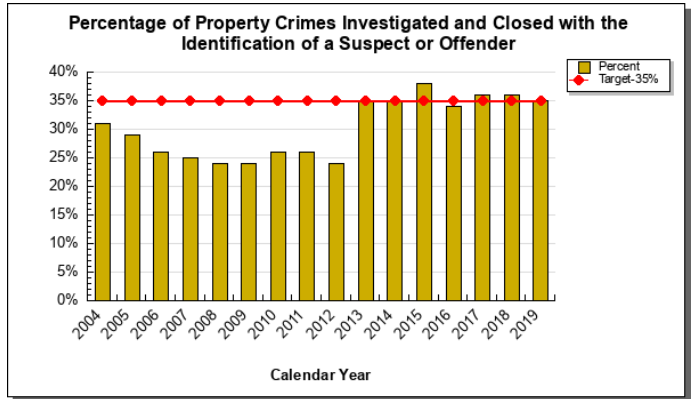
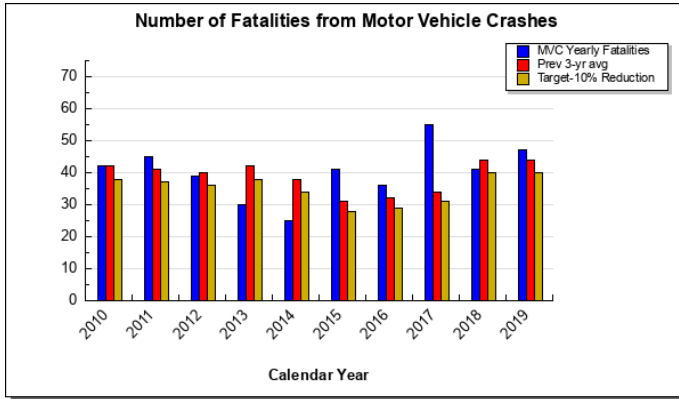
Component: Alaska State Trooper Detachments

Contribution to Department's Mission

Preserve public peace; protect life, property, and resources.

Results

(Additional performance information is available on the web at <https://omb.alaska.gov/results>.)



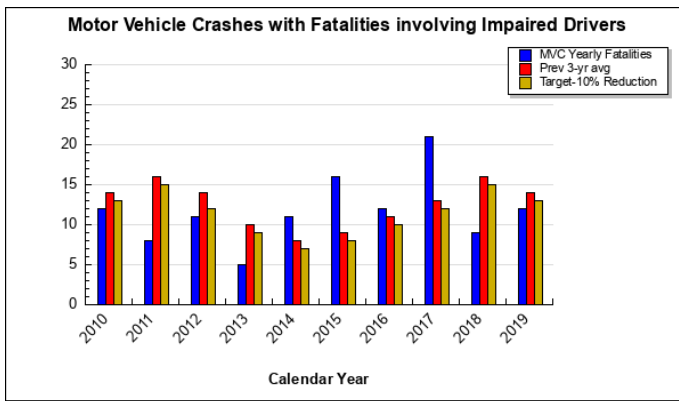
Core Services

- Highway safety.
- Preserve public peace.
- Provide additional rural law enforcement training.

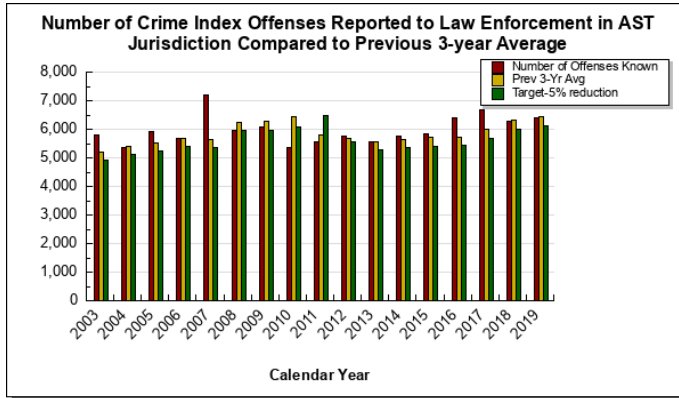
Measures by Core Service

(Additional performance information is available on the web at <https://omb.alaska.gov/results>.)

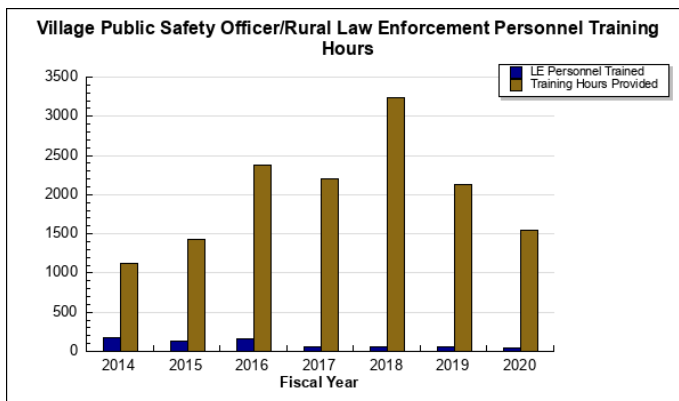
1. Highway safety.



2. Preserve public peace.



3. Provide additional rural law enforcement training.



Major Component Accomplishments in 2020

In FY2020, the Alaska State Troopers (AST) accomplished the following:

- Handled more than 91,965 calls for service within AST jurisdiction.
- Responded to more than 2,348 motor vehicle collisions.
- The Department of Public Safety (DPS) responded to 566 search and rescue related incidents in FY2020. These incidents included overdue hunters, snowmobilers, hikers, boaters, and medical evacuations off the road system. After investigation of these incidents, 398 incidents required SAR resources. Within these 398 incidents, 739 persons were assisted, located, or recovered.
- DPS and SAR partners statewide responded to 50 emergency beacon alerts and 19 reported aircraft crashes. The 19 aircraft crash incidents included 5 aircraft fatality crashes, 3 aircraft injury crashes, and 11 aircraft crashes involving property damage only.
- Solved 93 percent of the homicides that occurred within AST jurisdiction or for which AST was asked to adopt the investigation from a borough, city, or municipality.
- Served or closed over 8,085 warrants.
- Served or closed over 15,330 writs.
- Served or closed over 1,738 Domestic Violence Orders.
- Partnered with Department of Health and Social Services on Project Hope to help combat the opioid epidemic. Introduced the life-saving drug Naloxone into field use with Alaskan law enforcement officers.
- Implemented integration of other agencies into the Alaska Records Management System (ARMS).
- Conducted crime scene investigation for rural law enforcement.
- Held Alaska Association of Chiefs of Police Executive Development seminar.
- Held K-9 training for both AST and multiple municipal police agencies.
- Ongoing recertification / training in firearms, use of force and mental health awareness training.

- Held Rural Trooper Advanced Training covering topics related to domestic violence and sexual assault.
- Deployment of a Computer Aided Dispatch (CAD) application in the DPS Fairbanks dispatch center.

Recruitment: The Recruitment Unit allocated significantly more funds for advertising compared to previous years, including LinkedIn, Facebook/Instagram, and other digital venues. The unit's "hands-on recruitment approach" led to an increase in applications resulting in 1,377 applicants during FY2019. This was a significant improvement over the FY2018 total of 408. In FY2019, 44 state trooper recruits reported to the Academy in Sitka. The unit also processed 44 applications for Court Service Officer (CSO) positions. For FY2020 there were over 2,000 trooper recruit applications received, and 29 hired. Despite a record number of withdrawn applications attributed to COVID-19, the Fall 2020 application cycle remained one of the largest in recent years.

The Recruitment Unit remained active with job fairs, advertising, and follow-up with potential applicants. The unit produced an updated version of its Candidate Assistance video and made it available on the DPS recruitment website, continuing to meet the Recruitment Unit's goal of providing excellent communication with the applicant pool, providing guidance to prospective applicants to better prepare them for the hiring process and background investigation. The Recruitment Unit will continue to increase efforts of recruitment with the military both in Alaska and the lower 48, rural Alaska, and colleges and universities. AST continued to evaluate its recruiting practices and will be dedicating more efforts to focused, targeted recruitment of diverse applicants who are highly qualified. In August 2019 the unit switched from a paper-based hiring process to a digital process on a cloud-based platform, which has improved efficiency, enhanced customer service, and reduced the time necessary to complete a background investigation.

Special Events: During the past year, all detachments have conducted special patrol activities. Those activities typically include Special annual events such as the Alaska State Fair in Palmer, Mount Marathon race in Seward, the Iron Dog start, the Iditarod restart, Memorial Day events, the Deltana Fair, the Tanana Valley Fair, and the Ninilchik Fair. Due to COVID-19 mitigation efforts, however, the Iditarod restart was the only event on this list attended in FY2020. Alaska Bureau of Highway Patrol members also conducted dedicated patrols in Department of Transportation (DOT) construction zones and designated highway safety corridors.

The Alaska State Troopers also partnered with several municipal police departments for multi-jurisdictional patrols over the holidays to improve highway safety and shifted resources to reduce vehicle related incidents on the surface transportation system when popular personal use and sport fisheries were opened and traffic flow increased.

Key Component Challenges

Core Police Services: As Alaska's population continues to grow, requests for services in many core areas have increased. Alcohol and drug involvement in crime remains a significant challenge. Technological changes and sophistication allow new criminal exploitations of the populace, including identity theft, child pornography and online child sexual exploitation, and computer fraud schemes. Terroristic threats to infrastructure require greater patrols, more response planning, and more efforts aimed toward public reassurance. The complexity of calls for service and the commensurate time involved in current requirements for documentation and reporting of events has resulted in Alaska State Troopers (AST) becoming a very reactive organization.

For most of the commissioned personnel assigned to AST, proactive enforcement such as highway traffic patrols, burglary suppression, and community policing have been forced to a lower priority as personnel respond from one call for service to the next, day in and day out. This trend is expected to continue into FY2022 with areas such as proactive traffic enforcement being further negatively impacted due to the realignment of most commissioned positions previously assigned to the Alaska Bureau of Highway Patrol. The contrast between the actual capabilities and resources of AST and the beliefs and expectations of the public requires significant staff time dedicated to explanation in a myriad of forums.

AST's technology base continues to lag far behind other police and public service organizations in all these areas. One example of this is the antiquated in-car video technology that AST is currently using. Although AST was allowed to re-appropriate some Capital Improvement Project (CIP) funds in FY2016 to partially address this issue, there will continue to be both technical and funding challenges in implementing a more widespread utilization of new in-car video technology. Also, AST personnel do not have body worn camera capabilities and these types of evidence

capturing technologies are an expectation of today's general public. Systems of this sort require immense resources to store, retrieve, edit and distribute information which is requested for evidentiary or public records request purposes.

Another example of this is the significant lag in connectivity speeds that AST personnel experience in many of Alaska's rural areas. This results in tremendous challenges for personnel who are entering necessary information into police reports Alaska Records Management system (ARMS) and related databases. This problem exists due to infrastructure gaps and will be an issue no matter the platform for electronics records management.

AST continues to refine the merger of data between the Alaska Public Safety Information Network (APSIN) and ARMS. As the case activity is incorporated into ARMS, there have been some identified hurdles in clearly capturing all of the enforcement activity and subsequently reporting it in the same format as in prior years. AST expects to continue to see some deviation in reportable activity with some downward trends not accurately reflecting the current levels of true calls for service and responses. Prior years have seen improvement, but there are still challenges in mining the data to create accurate reports depicting a true picture of AST activity. AST anticipates that this will continue into FY2022. DPS has identified business process development and standardization as a key component to correctly collecting data for reporting purposes.

Recruitment: The number of applicants for trooper positions over the past year has continued to increase from prior years. Of those who were recruited, a significant percentage of the applicants were attributable to the recruiting efforts done by working AST and AWT personnel, fresh new advertising videos, as well as the recruitment website and paid LinkedIn, Facebook and Instagram advertising. However, recruitment and retention continue to be the largest challenge for troopers. Although the recruitment unit has been successful in increasing applications, attracting *quality* applicants is especially challenging when competing with other agencies in and out of Alaska. The requirement that troopers be willing to attend a residential academy in Sitka, then eventually transfer to rural locations where housing and amenities are limited or inadequate creates recruitment challenges for AST that are not faced by other police agencies in the state.

Court Security: The number of court services officers (CSO) located around the state has remained consistent in recent years. This number is no longer adequate to properly handle increased court security concerns, transport prisoners, and serve domestic violence protective orders, stalking, and other court writs in a timely manner. The prisoner transport volume for the Division of Alaska State Troopers (AST) decreased from FY2019 to FY2020, primarily due to Covid-19 response and the severe restrictions on court activities. The division moved 95,920 prisoners in FY2019 and 86,374 prisoners in FY2020.

There were no prisoner escapes, and there have been no significant injuries to any personnel during the prisoner transports throughout the year.

Rape and Domestic Violence: Alaska's rate of forcible rape is three times the national average. Rates of domestic violence are among the highest in the nation. The rates of victimization of Alaska Native women and children, particularly in rural Alaska, are even greater. Small communities and villages present specific and difficult challenges to these investigations.

Terrorism, Criminal Intelligence, and Weapons of Mass Destruction: The Alaska State Troopers continue to staff and supervise the Alaska Criminal Information and Analysis Center (AKIAC) which constitutes the Criminal Intelligence Unit (CIU), AST Person/Property Crime Analysts, AST HIDTA narcotics interdiction Crime Analysts, Task Force Officers from the Anchorage Police Department, State of Alaska Department of Corrections, Federal Bureau of Investigation (FBI), Department of Homeland Security (DHS), Bureau of Alcohol, Tobacco and Firearms (BATF), US Border Patrol and the Alaska National Guard Counterdrug Support (CDSP) team. AKIAC is located at Department of Public Safety (DPS) Headquarters and maintains a state-owned secure facility to allow DPS and other state and Federal partners to actively monitor and track classified information and intelligence specific to threats to Alaska. AKIAC receives requests for service from DPS/AST assets, local police departments, local and national FBI offices, other federal local enforcement offices, other State law enforcement, and other state and local law enforcement agencies around the US. AKIAC serves as the Intelligence Sharing Center (ISC) for the newly designated Alaska High Intensity Drug Trafficking (HIDTA) program. Further, AST remains actively involved in contingency planning and preparedness issues in concert with other government agencies, as well as with private industry. Finally, AST maintains close ties to oil and gas industry security entities through information sharing and provides classified security briefs to regional security managers as there are no Alaska State Trooper posts along almost 400 miles of

the Trans-Alaska Pipeline (from Prudhoe Bay to Fairbanks).

DETACHMENT CHALLENGES:

On a statewide level, each Detachment has seen an increase in criminal activities associated with the influx of drug trafficking and abuse, particularly associated with the opioid epidemic. The downstream effects of drug crimes result in victimization of citizens who experience property crimes, thefts, robbery, and other person-on-person crimes at the hands of the drug criminals; further impacting AST's ability to efficiently provide proactive enforcement.

"A" Detachment South (Southeast Alaska) – "A" Detachment's authorized DPS commissioned staffing level has remained essentially status quo over the past several fiscal years, with only minor deviations. "A" Detachment South's authorized Village Public Safety Officer (VPSO) staffing level is eight and currently seven of those positions are filled.

During the past year clearly COVID-19 has presented challenges but the primary challenge continues to be providing the best possible professional level of public safety service. This is true for urban communities with higher population concentrations as well as communities in more remote locations with lower population concentrations that constitute a majority of the communities within "A" Detachment. The Juneau courthouse increased the number of superior court judges by one. This places additional demands on Court Service Officers stationed there, which should be solved by the recent creation of one additional CSO position in Juneau.

The Ketchikan AST post is not fully staffed but anticipate being fully staffed in 2021. We have physically moved one Sergeant position from Ketchikan to Prince of Wales Post. While this removes one supervisor from Ketchikan the position provides direct supervision to three trooper positions and one administrative position at Prince of Wales Post. The Ketchikan Dispatch Center has three dispatchers covering Monday-Friday from 0800-2400 hours. With the addition of two cruise ship berths at the Ward Cove location in 2020, the Post anticipates a major influx of counter traffic and other general calls for service at the Ketchikan Post with the start of the anticipated cruise ship season in 2021. This dock is less than a mile from Ketchikan Post. The cruise ships that will utilize this dock carry approximately 4,100 passengers and 1,700 crew members.

The detachment area has several AWT vessels and two AWT small aircraft in the region. These are utilized in cooperation with AWT personnel for response purposes. When DPS planes or watercraft are unavailable, chartering commercial aircraft, taking the ferry, or not responding directly are the only options. Personnel are restricted to the timing and routes dictated by charter operators. Similar to Western Alaska, this can be problematic when there is a need to respond quickly to investigate crimes. Air travel, whether scheduled or chartered, is expensive, limiting the number of routine visits made to each village.

Transportation costs, lodging, and man hours consume travel budgets. There are over a dozen villages in "A" Detachment South. Reaching a majority of the communities within the region requires transportation costs beyond the vehicles assigned to individual troopers. This type of travel consumes time that cannot be allocated towards tangible one-on-one service to the public. Often, the detachment incurs lodging costs for overnight visits and unexpected weather condition delays. In circumstances when troopers can use an assigned vehicle to provide service to a community, many of these locations are over an hour's drive from the post.

Radio and cell towers are few and communication is extremely limited in "A" Detachment South's remote communities and locations. Sometimes the only viable method of communication is by satellite phones, which are inherently unreliable in Southeast Alaska. This creates impediments to law enforcement and AST's ability to provide efficient and effective public safety services. The addition of issuing every trooper a Garmin Inreach could enhance reliable communications throughout the area.

"A" Detachment North (Kenai Peninsula) – In September 2019, the former "E" Detachment became part of "A" detachment. This region consists of the entire Kenai Peninsula and the west side of Cook Inlet (Tyonek and Beluga) with headquarters in Soldotna. The detachment's northern area of responsibility reaches as far north as Eagle River for search and rescue incidents. The Kenai Peninsula continues to be a preferred recreational destination for many of Alaska's residents during both the summer and winter. Trooper posts are located in Seward, Soldotna, and Anchor Point. Court Service Officers are assigned to Kenai and Anchor Point.

The detachment maintains a traffic enforcement presence along the Seward Highway south of milepost 75 due to a high number of serious injury and fatality crashes along with heavy seasonal use traffic during summer months. The City of Anchorage provides traffic enforcement and general law enforcement services on the Seward Highway north

of milepost 75.

Seward troopers cover all calls for service from Lowell Point in Seward to mile 75 on the Seward Highway, including the Hope and Portage Highways, as well as the village of Chenega Bay. Search and rescue missions in Eagle River, Anchorage Hillside and along Turnagain Arm are covered by the Seward post. The demands of covering Eagle River, Anchorage Hillside and Turnagain Arm take troopers out of their traditional patrol duties for extended times, increasing travel and overtime costs to the detachment when these services could be more efficiently provided by troopers stationed closer.

Maintaining a viable trooper presence in the outlying areas has been a continuing challenge. As a result, calls for service in Seward and Anchor Point after hours are often handled by Soldotna-based troopers who are frequently 75 or more miles away. This can result in significant delays in response, and sometimes no response to routine calls for service.

Anchor Point recently received two new trooper PCNs. The Seldovia Chief of police is periodically vacant. There is a service contract in place where Seldovia police cover calls for service in the AST service area, but when the Chief position is vacant, travel and salary costs to this area increase until the position is filled. Similar challenges as those in Southeast Alaska are experienced in the Anchor Point area with regards to travel, overtime and communications for the villages covered by this post.

Maintaining minimum staffing levels within the region is a challenge. The Soldotna Post is one of three training posts for new troopers. On average, approximately 75 percent of the assigned troopers have less than five years of experience, so the leadership roles fall to more tenured troopers who also serve as field training officers, which puts a heavy strain on staff. Turnover is fairly high, partly due to the fact that as new troopers reach the point in their experience level and knowledge to become fully contributing assets, they transfer to other locations/units. Soldotna is generally staffed with a sergeant and four troopers per shift. Due to military and injury leave along with normal absences due to personal leave and training, most shifts in Soldotna have at most three people on duty. Those troopers spend much of their patrol time going from call to call, which leaves very little time for adequate investigations or proactive work such as traffic enforcement, community outreach, and drug interdiction.

Troopers continue to respond to a high number of Report Every Dangerous Driver Immediately (REDDI) complaints, 911 abandoned calls as well as false alarms from local businesses and residences. The number of REDDI calls has declined since the Anchorage Police Department (APD) started conducting traffic enforcement in the area south of Anchorage to mile 75 of the Seward Highway. These calls for service are now routed through APD dispatch. Civilian staffing in the Soldotna Public Safety Communications Center (SPSCC) is also challenging. The SPSCC is a multi-agency staffed facility that dispatches a variety of fire, emergency medical and law enforcement entities on the Kenai Peninsula. Currently DPS is looking into the feasibility of consolidated state operated dispatch service centers into two areas, Fairbanks and the Anchorage/Mat-Su bowl area.

“B” Detachment (Mat-Su Region) – “B” Detachment provides public safety services to about 120,000 permanent residents in the Mat-Su Borough, Valdez, Glennallen, and surrounding villages. Of the 120,000 residents, AST has primary law enforcement responsibility for about 95,000 full-time residents. In addition to full-time residents, huge numbers of tourists and residents from other areas of Alaska regularly travel in and out of “B” Detachment’s edges/borders for recreation and work year-round. Although the area within “B” Detachment is not the largest in square miles, it services a higher population density than the other detachments. “B” Detachment also borders the City of Anchorage and due to the closeness, many Alaska residents and non-residents commute to, from, and through “B” Detachment communities.

The Mat-Su Borough is now the second most populated area in the state, following Anchorage. The borough accounts for about forty-seven percent of the area encompassed by “B” Detachment’s borders. The population of the Mat-Su Borough according to the July 2019 census was estimated at 108,317 residents. It is one of the fastest growing areas in the state, with projected population growth to 122,148 by 2025.

“B” Detachment supports three correctional centers located within its edges/borders: Goose Creek Correctional Center, Point Mackenzie Correctional Farm, and Mat-Su Pretrial Facility, with a cumulative prisoner population making up 32.2% of the adult prison population statewide. This does not include the juvenile populations, which are housed at the Mat-Su Youth Facility in Palmer and administered by the Division of Juvenile Justice. Court

Services Officer (CSO) positions are needed to ensure officer safety and adequate coverage to meet increasing demand at the Palmer courts and to carry out the core functions of judicial services work including transporting prisoners from correctional facilities to court appearances and other appointments, providing security to the court and protecting the judiciary, and serving documents to include subpoenas, summons, writs, protective orders, complaints, and other notices. With too few CSOs to handle the workload, these functions fall to State Troopers to complete.

The detachment averages about 115 calls for service per day when averaged over a 12-month period, not including traffic stops, follow-up work and investigations. In 2019, Mat-Su Troopers received 2,400 calls coded as Disturbance or Assaults, 2,219 property crime related calls, and responded to 1,358 Motor Vehicle Crashes. The core Mat-Su Valley area takes in 95% of the call volume for the detachment, averaging 108 calls per day spread between an average of 12 Troopers on duty each day. The average B Detachment Trooper in the Mat-Su handles 138 calls for service per month or 1,656 per year ranging from civil disputes and neighborhood disagreements to active shootings, home invasion robberies and homicides.

“B” Detachment continues to respond to high numbers of property related crimes driven largely by an epidemic of illicit drugs. The Criminal Suppression Unit (CSU), a unit created in 2013 to combat property crimes in the Mat-Su Valley, continues to be a highly successful unit. The unit was only recently stood back up and since the beginning of 2020, the CSU has recovered \$438,336 in stolen property, seized/recovered over 91 firearms that were either reported stolen or found in the possession of felons and recovered 21 stolen vehicles.

Further, troopers in B Detachment continue to be the driving force in the Mat-Su Valley in solving complex criminal cases such as robberies and home invasions and identifying and arresting serial burglary suspects. The CSU augments their colleagues in patrol when there are manpower shortages and also works jointly with other investigative and neighboring law enforcement entities while focusing on high crime density areas.

“B” Detachment troopers are constantly faced with prioritizing calls for service leaving little time for proactive law enforcement patrols or traffic enforcement during regular duty hours. The large bulk of traffic enforcement is conducted by the three-person Bureau of Highway Patrol (BHP) and by Troopers working grant funded overtime. Should additional budget reductions result in the further loss of PCNs, the ability to do proactive enforcement and staff specialized units such as the CSU and BHP will continue to decline. Overall overtime costs are high due to mandatory staffing requirements for safety. Troopers work many of their regular days off, including extended duty days and holidays to meet the demands of the job.

In February 2018, the University of Alaska Anchorage published “B” Detachment Patrol Staffing Study and Description of Dispatched Police Incidents. The study concluded that “B” Detachment had a 57 percent staffing shortage. Current staffing levels were found to be unsustainable for the long term given calls for service and population growth in the Mat-Su Valley.

The study recommended that an additional shift be created with eight troopers and one sergeant to field calls from noon to midnight. Since the study was published; “B” Detachment has not seen increased staffing numbers; however creative scheduling has allowed additional Troopers to be on duty during the identified “peak times” which has increased officer safety and allowed for adequate staffing.

Glennallen Post is not staffed with an active duty trooper 24/7 and instead relies on a trooper being placed on standby for callout. Glennallen Post still has high overtime costs due to call outs and scheduled personal leave which reduces staffing levels. An increase in staffing would reduce overtime hours significantly. The UAA Staffing Study suggests more than doubling current staffing levels in Glennallen.

“B” Detachment Child Investigative Unit (CAIU) has an extremely heavy caseload. CAIU investigators are supervised by an offsite Sergeant as the CAIU is housed at the Children’s Place in Wasilla. “B” Detachment CAIU receives the highest volume of referrals and reports of harm from the Office of Children’s Services. Reports of harm will continue to rise with the growing population and the addition of OCS case workers assigned to the Mat-Su Valley. The CAIU would greatly benefit from a dedicated CAIU Sergeant and Criminal Justice Technician to assist with research, videos, and evidence collection.

Over the past four years, “B” Detachment has trained all commissioned and non-commissioned staff in Mental Health First Aid and has helped the Department of Corrections, Fire, and EMS in training many of their personnel. “B”

Detachment has also trained more than twenty local patrol troopers in Crisis Intervention Training (CIT).

“B” Detachment has worked extremely well with community partners and with the Mat-Su Coalition (of which “B” Detachment is a part) to secure non-state funding to support training for fourteen Mental Health First Aid (MHFA) instructors and three CIT instructors so DPS could begin building and maintain a resiliency program for DPS personnel and the communities it serves statewide.

Due to the strength of the community partnership, “B” Detachment was able to get troopers from other areas of the state certified in MHFA and CIT to ensure this valuable training was able to go statewide rather than staying isolated with the Mat-Su region. This has moved “B” Detachment closer to standing up a full-time Crisis Intervention Team within patrol to deal with the increasing mental health calls it is responding to. Troopers are now partnering with High Utilizers Matsu Nurses (HUMS), which has reduced the amount of time troopers are spending on mental health crisis calls.

This partnership has provided an option local Troopers have never had before to serve citizens in mental health crisis. The goal is to help people experiencing mental health crises but who have not committed a crime by getting citizens necessary help while reducing troopers time on the non-criminal contact.

Continued state and local partnerships, education, and training will develop better working relations with the community. These partnerships identify useful resources outside the criminal justice system for support of mental health crisis. Teaching Mental Health First Aid (MHFA) to communities prepares them to partner with law enforcement and other agencies to meet local needs.

“B” Detachment now has four MHFA instructors on staff, one CIT instructor, and two Youth MHFA trainers on hand to engage school staff and parents. At the end of 2018, “B” Detachment held a Citizen Academy for “community council leaders” and taught all of them the MFHA course. The impact was immense and the feedback was tremendous. “B” Detachment is actively planning future citizen courses which will help DPS and the community being served to work together on solving challenges.

“B” Detachment Command continues to communicate with local leaders to establish a better relationship, formulate plans, and build strong partnerships to address increasing community needs and concerns. “B” Detachment has established regular meetings with the Mat-Su Borough Community Councils for Public Safety comprised of leaders from local community councils and have established internal procedures that allow Sergeants and patrol troopers to make appearances at council meetings, establishing a more proactive community relations culture within “B” Detachment.

The foundation of better community relations encompasses six pillars: Building Trust and Legitimacy, Policy and Oversight, Technology and Social Media, Community Policing and Crime Reduction, Training and Education, and Officer Wellness & Safety.

“C” Detachment (Western Alaska) –

The largest geographical detachment within AST, its population is liberally scattered throughout an area larger than the state of California. “C” Detachment consists of the area west of the 152nd vertical longitudinal line. This encompasses the Aleutian Islands, the Kodiak Island archipelago, Bristol Bay, Yukon Kuskokwim, Norton Sound, and Northwest Arctic Borough areas. These areas are considered “Bush” Alaska and with the exception of Kodiak are all considered off the road system. Travel to these areas from an urban center such as Anchorage is only possible by aircraft. Travel from the larger regional “hub” communities such as Kodiak, Dillingham, Bethel, Nome, and Kotzebue are by aircraft all year and dependent upon the season by other modes of travel such as watercraft, off road vehicles including four wheelers or snow machines, depending on weather conditions. Troopers are required to travel using all of these methods during routine patrol and for emergency response. Emergency response times for a trooper to reach a community in Western Alaska can range from several minutes or hours to days depending on the location and the weather. These geographical challenges when combined with minimal staffing and lack of general modern infrastructure create significant operations issues. Additional factors include the lack of housing and adequate office space creating hardships for troopers and negatively affects their ability to accomplish the mission of the department. DPS and C Detachment have entered into a partnership with the Alaska Housing Finance Corporation (AHFC) to conduct an in-depth review of facilities both office and housing in 2020-2021 to formulate an infrastructure plan.

“C” Detachment has the highest proportion per capita of sexual assault and sexual abuse of a minor cases for the entire state which are a primary focus of Troopers. Continued efforts to provide advanced training to C Detachment Troopers to effectively investigate these serious crimes while utilizing the effective model of Sexual Assault Response Team (SART) and the growing number of Child Advocacy Centers (CACs) within the “C” detachment region. The detachment has been utilizing a unit in Bethel known as the Violent Offenders Unit (VOU) in the Yukon-Kuskokwim Delta for over five (5) years. This unit focuses on investigation of significant person crimes including homicides and sexual offenses. The VOU model has been shown to improve the relationships with other agencies by having providers and families work with specific troopers who are trained and have experience from routinely working investigations of this nature. The expansion of this model is a priority that is hampered by the limited number of positions in rural trooper posts, which limits the ability to create similar units across the detachment.

“C” Detachment has seen a 26% increase of reported violent crimes against a person as noted in the University of Alaska “2020 C Detachment Patrol Staffing Study”. These numbers have increased in part because of the improved ability for community members to report incidents. Cell phone technology continues to expand into rural Alaska allowing a majority of citizens to call in order to report crime and request assistance. This technology links rural Alaska in a much more comprehensive manner than in the past. Although this is positive in that it provides the public with greater access to law enforcement, it increases the number of calls that must be screened and prioritized given the department’s limited resources. To address this “C” Detachment has utilized dispatch centers in Ketchikan and Fairbanks to provide professional dispatch services to answer after-hours calls and initiate incident information for all detachment posts. This has improved documentation of calls for service and response to citizen requests for assistance. Additionally, 9-1-1 calls in Western Alaska are now directed to the Fairbanks dispatch center, enhancing the level of service provided. The staffing study has provided a general framework for evidence-based staffing increases in upcoming years.

Significant effort has been made to increase investigative training for troopers assigned to C Detachment. This training uses multiple delivery methods to provide uniformity across the detachment and ensure current practices and investigative skills are consistent with national best practices. First line supervisors and administrative support staff are actively involved with identifying topics and resources to enhance content and quality of courses offered.

Coordination continues with other agencies to improve relationships throughout the region. C Detachment is relied upon by many agencies, both State and Federal, in accomplishing their missions; these partnerships are vital in working to meet the overall public safety needs of communities. C Detachment works closely with the court system to move prisoners from DOC facilities in large communities to smaller regional contract jails for court proceedings. This creates significant logistical and financial impacts to C Detachment resources.

C Detachment continues to utilize the alternate work schedule for small communities throughout the Detachment. This model consists of Troopers who work two weeks in the community on extended shifts and then have a two week off duty period outside of the community. This model provides enhanced trooper coverage and reduced response times in the furthest reaches of rural Alaska. Expanded implementation of this schedule would spread the significant workload in Western Alaska and allow troopers to be placed in communities that have not had a law enforcement presence in the past. This schedule has been implemented for communities across C Detachment to include Togiak, Hooper Bay, Emmonak, St. Mary’s, Aniak, Bethel, Unalakleet, and Selawik. Communities located near these areas also benefit from having a Trooper located in these locations. Detachment strategy includes expansion of this model to include additional communities and the FY21 budget included position for communities of Stebbins/St. Michael and Ambler.

“C” Detachment has a significant number of search and rescue incidents every year. These numbers highlight the need for additional resources to support these efforts in C Detachment. There is an ongoing need for fixed wing aircraft, helicopters, and civilian pilots due to the decreased availability of vendors to provide services to the department in rural areas. These department resources are used to respond to significant incidents throughout C Detachment where time is of the essence for preservation of life and limb. Civilian pilot positions have been added in Nome, Kotzebue and Bethel to include full time pilots living in those communities as well as support pilots based in Anchorage. While having these pilots available has significantly increased operational capability within the detachment the uncertain future of commercial aircraft operations in the region, such as the closure of Raven Air highlights the need for continued focus on independent DPS response capability. The limited number of available DPS aircraft and limitations of the type of aircraft owned by the department will continue to provide challenges.

“D” Detachment (Fairbanks Region) – This detachment has the highest number of personnel. “D” Detachment is responsible for 370,000 square miles. The Detachment headquarters are in Fairbanks, which serves as one of the Division’s three training posts. As a training post, “D” Detachment has a high number of new troopers. “D” Detachment also has posts in Delta, Tok, Northway, Galena, Nenana, Healy and Cantwell.

“D” Detachment is home to one of two State owned Dispatch Centers. Fairbanks AST dispatch serves not only interior Alaska, the Aleutian Chain, Kodiak and many areas in Western Alaska. During FY2018 the Fairbanks dispatch center underwent significant renovations, facility remodel, and system and equipment upgrades. In 2019 the Fairbanks Center has continued to move forward with technology and upgraded the Computer Aided Dispatch (CAD) system. This system which was designed in 2019 will be implemented in 2020 and will allow dispatchers to document Trooper activity and memorialize events without a Trooper being required to spend additional time doing duplicate administrative work.

“D” Detachment is responsible for conducting numerous search and rescue operations throughout interior Alaska. These missions involve the use of an assigned A Star Helicopter and a Cessna 206. “D” Detachment may also request assistance from AWT, Army Guard, Air Guard and the Civil Air Patrol.

General Investigation Units (GIU) as well as outpost troopers handled 110 sexual assault investigations and 77 sexual abuse of a minor investigations, five homicides and two officer-involved shootings in FY2020. Currently, all reported property crime investigations within “D” Detachment are conducted by troopers from the uniformed patrol unit with some assistance provided by members of the Special Projects Unit, General Investigations Unit, and Statewide Drug Enforcement Unit (SDEU) on a limited and case-by-case basis.

“D” Detachment created a Special Projects Unit (SPU) to respond to burglaries, thefts, fatality accidents and assist with community-oriented training and programs. This unit was comprised of one Sergeant and two troopers. Uniformed patrol troopers are primarily tasked with responding to crimes in progress and as a result do not have the necessary time to devote to burglary and property crime investigations without incurring significant amounts of overtime or falling further behind with the other investigations they are assigned. The Special Projects Unit reviews property crime investigations and focuses on large dollar amount thefts or cases where crimes appear to be linked. Although this unit focus is on property crimes it also supports other Detachment emergencies as needed.

A sergeant and three troopers were in Fairbanks as part of the “D” Detachment Rural Unit. These personnel are tasked with responding to calls for service from several Interior villages and providing oversight, training, and support to VPSOs working in the region. The growth in the availability of internet and cell phone services, and the presence of VPSOs in communities has resulted in more crimes being reported and the need for Rural Unit troopers to travel more frequently. Responding to increased calls for service and support for the VPSO program remains a high priority.

AST Director’s Office – The Division of AST Director’s Office continues to work through and implement a comprehensive strategic planning process that will guide agency efforts and priorities for the near future. The objective is to implement a process that will enable AST to transition from being static to a more progressive method of conducting AST’s operations.

AST will continue to implement the advancement of technology initiatives as well as to assess and realign its existing resources to maximize its ability to be efficient and yet provide a positive impact to providing service to Alaska. AST intends to continue efforts to provide greater follow-up on major crimes as well as applying resources to further lower the rates of sexual assaults and sexual abuse of minors in Alaska. AST will further efforts to maximize effectiveness and improve responses to calls for service.

Highway safety continues to be a high priority for AST and additional efforts will be expended to secure grant funding to allow for proactive patrols which are conducted solely on overtime by regular patrol personnel.

AST will continue State Trooper recruitment efforts, including an ongoing refinement of recruiting practices to address staffing and diversity goals.

AST will be working to convert additional post locations to two-on, two-off posts where appropriate to provide cost savings while enhancing the level of service to those areas.

AST will increase efforts to attract qualified applicants to fill vacant VPSO positions and to highlight the importance of the VPSO program in rural Alaska.

AST will continue efforts to document the state of DPS/AST facilities and the need to repair, replace, or upgrade current facilities.

Significant Changes in Results to be Delivered in FY2022

Alaska State Troopers (AST) is continuing to aggressively pursue technologies to better capture and collect information and evidence by DPS as members of the public report criminal and suspicious activity. DPS deployed a CAD at the end of FY2020 and in early FY2021, connected the CAD with the ARMS to see an increase in data being housed in a single law enforcement database and to reduce redundancy of data entry into multiple systems. AST will continue to refine business processes and procedures to aide in data collection including the implementation of an online reporting system that the public can utilize to report non-emergency activity to AST. These new programs will enable the division to conduct its duties more efficiently.

AST anticipates providing access to the Alaska Records Management System (ARMS) to other agencies; both state and municipal. This will continue to create significant efficiencies for both DPS and other agencies and will exponentially increase the information-sharing capabilities that Alaska law enforcement will be able to experience. Long term, this will undoubtedly result in more timely identification of offenders as well as the ability to address some of the current trends which affect the public on a statewide basis. This effort was started in FY2014 and will continue into FY2022.

AST will continue its active support of the previously implemented Strategic Highway Safety Plan to reduce the number of serious injury and fatality collisions on Alaska's roadways. This includes proactive enforcement efforts, educational presentations and specialized fatal and serious injury crash investigations.

AST Director: The director has a major role in implementing statewide law enforcement policy. The director's staff is responsible for administering the division's budget and carrying out policy. Balancing law enforcement service needs of various areas of the state with the very limited number of commissioned officers and resources requires constant review and evaluation.

Under collective bargaining agreements, the director's staff must devote a good deal of time to considering the transfer of individual officers, their educational and career development needs, and their training and discipline. The director must also develop a practice and environment that promotes planning for greater efficiency of processes and more prudent use of public funding.

The director of the AST is also responsible for organizational succession planning through the preparation and mentoring of suitable candidates for higher command positions. The director's office implements new technologies and modern business practices to achieve greater efficiencies, while remaining attentive to the needs of the workforce to maintain productivity and facilitate recruitment and retention.

Key issues facing the AST Director's Office are human and physical resources and facilities. Performing basic public safety functions across a very large area is extremely challenging while striving to also maintain public trust and security, as well as employee safety. It is a continual balancing act to allocate resources that are directly responsible for responding to calls for service while also ensuring that proactive enforcement activities are implemented. Facilities in many locations are inadequate to support the needs of personnel resources. A number of facilities are very old and in need of significant renovation to bring them up to a level of reasonable suitability, putting them in a condition where they are able to provide a safe and secure office environment.

The final and likely the most pressing issue is the complex emergency dispatch services conglomeration that AST must deal with. Two of the three primary dispatch centers that AST must rely on do not belong to AST. AST contracts with the City of Wasilla for one center to provide dispatch services. With the current arrangement, AST is unable to address ever-rising cost increases being presented by the city of Wasilla, along with reductions in services and no

governance board to provide AST with meaningful input into the daily operations of the center and the services delivered.

The second non-AST dispatch center is located on the Kenai Peninsula and is co-staffed by DPS and Kenai-Peninsula Borough employees. This complex arrangement also poses significant challenges in the oversight and management of the center and its collective employees; the current arrangement fails to provide for any governance board and allows for only marginal DPS input into operations, workflow, and services delivered. Costs associated with this Kenai Borough center are also rising rapidly. These arrangements are not conducive to AST (and the department) providing comprehensive, consistent, standardized dispatch services to citizens across the state whose safety is the department's responsibility. The department is working towards developing a centralized Dispatch and Operations Center.

Statutory and Regulatory Authority

DPS-Powers and duties of department (AS 44.41.020)
State Troopers (AS 18.65.010 - AS 18.65.110)
Police Protection (AS 18.65.010 - AS 18.65.790)
Law enforcement duties (AS 18.65.010 - AS 18.65.086)
Controlled Substances (AS 11.71.010 - AS 11.71.900)
Judicial Services (AS 22.20.100 - AS 22.20.140)
Prisoner Transportation (AS 33.30.071 and AS 33.30.081)
Search & Rescue (AS 18.60.120 - AS 18.60.175)
Village Public Safety Officer Definition (AS 01.10.060(c)(7)(C))
VPSO Program (AS 18.65.670)
VPSO Regulations (13 AAC 96.010-900)
Concealed Handgun Permits (AS 18.65.700)
Security Guard Licensing (AS 18.65.400 - AS 18.65.410)
Sex Offender Registration (AS 12.63.010 - AS 12.63.100)
Central Registry of Sex Offenders (AS 18.65.087)
Department to assist other agencies (AS 18.65.090)
Document and disseminate information regarding homicides (AS 44.41.040)
Document and investigate missing persons (AS 18.65.610)
Investigate fires resulting from crimes (AS 18.70.030)
Investigate sexual assault and child exploitation (AS 18.65.086)
DUI Forfeiture Requirements (AS 28.35.036-.037)
DPS DNA collection and registration requirements (AS 44.41.035)
Duty of Law Enforcement to Provide VCCB information (AS 18.67.175)
Rights of Crime Victims to be notified orally and in writing by Law Enforcement (AS 12.61.010)

Contact Information
<p>Contact: Elizabeth Dunayski, Administrative Services Director Phone: (907) 465-5501 E-mail: elizabeth.dunayski@alaska.gov</p>

Alaska State Trooper Detachments Personal Services Information				
Authorized Positions			Personal Services Costs	
	FY2021 Management Plan	FY2022 Governor		
Full-time	421	417	Annual Salaries	42,498,445
Part-time	0	0	COLA	1,542,646
Nonpermanent	7	8	Premium Pay	5,516,388
			Annual Benefits	25,496,333
			<i>Less 6.01% Vacancy Factor</i>	(4,513,512)
			Lump Sum Premium Pay	0
Totals	428	425	Total Personal Services	70,540,300

Position Classification Summary					
Job Class Title	Anchorage	Fairbanks	Juneau	Others	Total
Accounting Technician I	1	0	0	0	1
Administrative Assistant I	3	1	0	1	5
Administrative Assistant II	3	1	0	3	7
Administrative Assistant III	1	0	0	0	1
Administrative Officer II	1	0	0	0	1
Analyst/Programmer III	1	0	0	0	1
Captain DPS	3	1	0	2	6
Court Services Officer	1	10	4	23	38
Criminal Justice Technician I	3	2	0	8	13
Criminal Justice Technician II	2	1	0	3	6
Division Director - Px	1	0	0	0	1
DPT Tech Ofc I	1	0	0	0	1
Emergency Dispatch Supervisor	1	1	0	0	2
Er Svc Disp I	0	19	0	8	27
Er Svc Disp II	0	3	0	2	5
Forensic Technician II	0	1	0	0	1
Information Officer II	2	0	0	0	2
Information Officer III	1	0	0	0	1
Information System Coordinator	1	0	0	0	1
Lieutenant DPS	5	2	0	5	12
Mail Services Courier	1	0	0	0	1
Major DPS	3	0	0	0	3
Office Assistant II	5	4	0	9	18
Office Assistant III	0	1	1	13	15
Office Assistant IV	0	1	0	2	3
Procurement Specialist I	1	0	0	0	1
Program Coordinator II	1	0	0	0	1
Public Safety Technician II	1	0	0	1	2
Secretary	1	0	0	0	1
Sergeant DPS	3	8	1	30	42
State Trooper	7	38	3	149	197
State Trooper Recruit	1	1	0	6	8
Telecommunications Planner	1	0	0	0	1
Visual Information Specialist	1	0	0	0	1
Totals	57	95	9	265	426

Component Detail All Funds
Department of Public Safety

Component: Alaska State Trooper Detachments (2325)
RDU: Alaska State Troopers (160)

Non-Formula Component

	FY2020 Actuals	FY2021 Conference Committee	FY2021 Authorized	FY2021 Management Plan	FY2022 Governor	FY2021 Management Plan vs FY2022 Governor	
71000 Personal Services	50,156.5	66,228.3	66,228.3	68,697.2	70,540.3	1,843.1	2.7%
72000 Travel	1,688.7	1,876.2	1,876.2	1,425.7	1,455.7	30.0	2.1%
73000 Services	12,963.3	12,818.0	12,818.0	11,043.5	10,905.2	-138.3	-1.3%
74000 Commodities	870.9	947.7	947.7	947.7	952.7	5.0	0.5%
75000 Capital Outlay	2,244.9	1,529.2	1,529.2	1,529.2	1,529.2	0.0	0.0%
77000 Grants, Benefits	0.0	0.0	0.0	0.0	0.0	0.0	0.0%
78000 Miscellaneous	0.0	0.0	0.0	0.0	0.0	0.0	0.0%
Totals	67,924.3	83,399.4	83,399.4	83,643.3	85,383.1	1,739.8	2.1%
Fund Sources:							
1001 CBR Fund (UGF)	0.0	20,625.7	20,625.7	20,625.7	0.0	-20,625.7	-100.0%
1004 Gen Fund (UGF)	67,464.6	61,876.9	61,876.9	62,245.8	84,793.5	22,547.7	36.2%
1005 GF/Prgm (DGF)	14.1	275.0	275.0	150.0	100.0	-50.0	-33.3%
1007 I/A Rcpts (Other)	429.8	408.5	408.5	408.5	409.6	1.1	0.3%
1061 CIP Rcpts (Other)	15.8	213.3	213.3	213.3	0.0	-213.3	-100.0%
1092 MHTAAR (Other)	0.0	0.0	0.0	0.0	80.0	80.0	100.0%
Unrestricted General (UGF)	67,464.6	82,502.6	82,502.6	82,871.5	84,793.5	1,922.0	2.3%
Designated General (DGF)	14.1	275.0	275.0	150.0	100.0	-50.0	-33.3%
Other Funds	445.6	621.8	621.8	621.8	489.6	-132.2	-21.3%
Federal Funds	0.0	0.0	0.0	0.0	0.0	0.0	0.0%
Positions:							
Permanent Full Time	389	420	420	421	417	-4	-1.0%
Permanent Part Time	0	0	0	0	0	0	0.0%
Non Permanent	8	8	8	7	8	1	14.3%

Change Record Detail - Multiple Scenarios with Descriptions
Department of Public Safety

Component: Alaska State Trooper Detachments (2325)
RDU: Alaska State Troopers (160)

Scenario/Change Record Title	Trans Type	Totals	Personal Services	Travel	Services	Commodities	Capital Outlay	Grants, Benefits	Miscellaneous	Positions		NP
										PFT	PPT	
***** Changes From FY2021 Conference Committee To FY2021 Authorized *****												
Conference Committee												
	ConfCom	83,399.4	66,228.3	1,876.2	12,818.0	947.7	1,529.2	0.0	0.0	420	0	8
1001 CBR Fund		20,625.7										
1004 Gen Fund		61,876.9										
1005 GF/Prgm		275.0										
1007 I/A Rcpts		408.5										
1061 CIP Rcpts		213.3										
Subtotal		83,399.4	66,228.3	1,876.2	12,818.0	947.7	1,529.2	0.0	0.0	420	0	8
***** Changes From FY2021 Authorized To FY2021 Management Plan *****												
Transfer Lieutenant (12-1353) and Office Assistant II (12-1977) from Alaska Bureau of Highway Patrol to Align Operations												
	Trin	285.2	285.2	0.0	0.0	0.0	0.0	0.0	0.0	2	0	0
1004 Gen Fund		285.2										
Transfer Lieutenant (12-1353) and Office Assistant II (12-1977) from Alaska Bureau of Highway Patrol to AST Detachments to align with operations. The positions no longer work exclusively for the Bureau of Highway Patrol.												
Transfer Major (12-1780) from Statewide Drug and Alcohol Enforcement Unit to Support Operations												
	Trin	274.3	274.3	0.0	0.0	0.0	0.0	0.0	0.0	1	0	0
1004 Gen Fund		274.3										
Reclassify from Sergeant to Major, transfer of Major (12-1980) from Statewide Drug and Alcohol Enforcement Unit to AST Detachments in support of the Operations Support Bureau. This is a realignment of statewide support functions currently housed in Alaska State Troopers, Alaska Wildlife Troopers, and the Commissioner's Office. This position oversees the coordinated effort to ensure full-service delivery of law enforcement operations support.												
Transfer Two Aircraft Pilots (12-?105, 12-?106) to AWT Aircraft to Align Operations												
	Trout	-190.6	-190.6	0.0	0.0	0.0	0.0	0.0	0.0	-2	0	0
1004 Gen Fund		-190.6										
Transfer two Aircraft Pilots (12-?105, 12-?106) from AST Detachments to align with operational needs. These positions are Anchorage based and will report within the Aircraft Section command structure.												
Transfer Administrative Assistant I (12-N20002) to Alaska Bureau of Investigation to Align Alaska Criminal Intelligence												
	Trout	0.0	0.0	0.0	0.0	0.0	0.0	0.0	0.0	0	0	-1
Transfer long-term non-permanent Administrative Assistant I (12-N20002) from AST Detachments to Alaska Bureau of Investigation to align with the operational reorganization of the Alaska Criminal Intelligence Center. This position will continue to perform the same duties. As this is a non-permanent position, this transfer is done without funding.												

Transfer Sergeant (12-1039) from Village Public Safety Officer Program for Staff Support

Change Record Detail - Multiple Scenarios with Descriptions
Department of Public Safety

Component: Alaska State Trooper Detachments (2325)
RDU: Alaska State Troopers (160)

Scenario/Change Record Title	Trans Type	Totals	Personal Services	Travel	Services	Commodities	Capital Outlay	Grants, Benefits	Miscellaneous	Positions		
										PFT	PPT	NP
	Trin	0.0	0.0	0.0	0.0	0.0	0.0	0.0	0.0	1	0	0
<p>Positions under the Village Public Safety Office (VPSO) program are being dispersed to different units throughout the department. This position (12-1039) will become a Wellness Sergeant due to the increasing need for mental health awareness and support to our troopers, employees and the public. This Sergeant will assist in supervising the DPS Wellness Program with the goal of reducing and removing interferences to employee wellness, both personal and professional, by providing helpful resources, training, and intervention.</p>												
Transfer to Alaska Wildlife Troopers for Anticipated Collections in Confiscated Fish Revenue												
	Trout	-125.0	0.0	0.0	-125.0	0.0	0.0	0.0	0.0	0	0	0
1005 GF/Prgm		-125.0										
<p>Transfer \$125.0 in general fund program receipt authority to Alaska Wildlife Troopers to accommodate anticipated collections in confiscated fish revenue.</p>												
Transfer Two Positions (12-1510; 12-1540) to Department of Transportation for Facilities Consolidation												
	Atroat	0.0	0.0	0.0	0.0	0.0	0.0	0.0	0.0	-2	0	0
<p>Transfer two full-time Department of Public Safety facilities maintenance positions to the Division of Facilities Services, formed in FY2019, and housed in the Department of Transportation and Public Facilities. The State of Alaska is transitioning from the decentralized method of facilities maintenance to the shared services method. Today, multiple state agencies own facilities but they all approach facilities maintenance differently. By centralizing this function within the Department of Transportation and Public Facilities, the process of maintaining public facilities can become far more effective and efficient. With added accountability between the Department of Transportation and Public Facilities (as the service provider) and customer agencies (the facilities owner), the process of maintaining these buildings can be streamlined and result in savings.</p> <p>Budget authority is retained by the department to fund a reimbursable services agreement with the Division of Facilities Services for the cost of services provided.</p> <p>Positions to be transferred:</p> <p>Full-time, Environmental Services Journey II (12-1510), wage grade 60, located in Fairbanks Full-time, Maintenance Generalist Journey (12-1540), wage grade 54, located in Fairbanks</p>												
Align Authority with Anticipated Expenditures												
	LIT	0.0	2,100.0	-450.5	-1,649.5	0.0	0.0	0.0	0.0	0	0	0
<p>Transfer authority from travel and services to personal services for anticipated personal services costs. Remaining travel and services authority is sufficient to cover anticipated expenditures.</p>												
Add New Information Officer II (12-2087) to Support the Departments Communication Efforts												
	PosAdj	0.0	0.0	0.0	0.0	0.0	0.0	0.0	0.0	1	0	0
<p>Add Information Officer II (12-2087) in order to maintain clear and effective communications with the public. In light of the current state of emergency with COVID-19, this position is critical to keeping department staff and the public apprised of current and emergent public safety issues and incidents. Information Officer positions are responsible for providing timely responses to media and members of the public, keeping webpages accurate and up to date, and providing</p>												

Change Record Detail - Multiple Scenarios with Descriptions
Department of Public Safety

Component: Alaska State Trooper Detachments (2325)
RDU: Alaska State Troopers (160)

Scenario/Change Record Title	Trans Type	Totals	Personal Services	Travel	Services	Commodities	Capital Outlay	Grants, Benefits	Miscellaneous	Positions		NP
										PFT	PPT	
proactive outreach and education on matters of public safety.												

Subtotal	83,643.3	68,697.2	1,425.7	11,043.5	947.7	1,529.2	0.0	0.0	421	0	7
-----------------	-----------------	-----------------	----------------	-----------------	--------------	----------------	------------	------------	------------	----------	----------

***** **Changes From FY2021 Management Plan To FY2022 Governor** *****

FY2022 Salary Adjustments

Scenario/Change Record Title	Trans Type	Totals	Personal Services	Travel	Services	Commodities	Capital Outlay	Grants, Benefits	Miscellaneous	PFT	PPT	NP
1004 Gen Fund	SalAdj	1,445.0	1,446.1	0.0	0.0	0.0	0.0	0.0	0.0	0	0	0
1007 I/A Rcpts		1.1										

FY2022 2% COLA for DPS Fire Marshall and CSO: \$91.4

FY2022 3% COLA for Public Safety Employees Association (AA/AP): \$1,268.9

FY2022 1% COLA for ASEA/General Government (GG/GP/GY/GZ): \$85.8

MH Trust: Implement CIT Training

Scenario/Change Record Title	Trans Type	Totals	Personal Services	Travel	Services	Commodities	Capital Outlay	Grants, Benefits	Miscellaneous	PFT	PPT	NP
1092 MHTAAR	IncT	80.0	40.0	30.0	5.0	5.0	0.0	0.0	0.0	0	0	0

This project maintains a critical component of the Trust's Disability Justice focus area by providing foundational knowledge for law enforcement and first responders on mental health disorders and cognitive impairments, best practices for responding to mental and behavioral health issues, laws centered around Title 47, and the State's community behavioral health system to municipal law enforcement, the Alaska State Troopers (AST), and other first responders. The Department of Public Safety (DPS) Alaska Police Standards Council (APSC) will provide 40 hours of Crisis Intervention Team training that adheres to the nationally recognized Memphis Model to APSC certified municipal and state law enforcement, correctional officers, probation officers, and village police officers. The training will provide Alaska's first responders with the tools to respond to calls for service involving persons with mental and behavioral health issues and who may be experiencing a mental health crisis, thus, providing greater public protection and keeping Alaskans safe.

Fully Fund New Positions Added in FY2021

Scenario/Change Record Title	Trans Type	Totals	Personal Services	Travel	Services	Commodities	Capital Outlay	Grants, Benefits	Miscellaneous	PFT	PPT	NP
1004 Gen Fund	Inc	1,457.4	1,457.4	0.0	0.0	0.0	0.0	0.0	0.0	0	0	0

Thirty-six new positions were added to the Alaska State Troopers RDU in FY2021. These positions were initially funded at approximately 75% to account for anticipated delays in recruitment. This increment is needed to fully fund the positions for FY2022.

Positions by component are as follows:

- Alaska Bureau of Judicial Services:
 - Office Assistant II
- AST Detachments:
 - State Trooper (15)
 - Court Service Officer (5)

Change Record Detail - Multiple Scenarios with Descriptions
Department of Public Safety

Component: Alaska State Trooper Detachments (2325)
RDU: Alaska State Troopers (160)

Scenario/Change Record Title	Trans Type	Totals	Personal Services	Travel	Services	Commodities	Capital Outlay	Grants, Benefits	Miscellaneous	Positions		
										PFT	PPT	NP
Criminal Justice Technician II (5) Public Safety Technician II Office Assistant II Administrative Assistant I Alaska Bureau of Investigation: Data Processing Manager II Victim/Witness Paralegal I AWT Aircraft Section: Aircraft Pilot (4) AWT Marine Enforcement: Boat Officer III												
Note: Three of the Aircraft Pilot positions were requested under AST Detachments but will be transferred to AWT Aircraft Section.												
Reduce Authority to Align with Anticipated Revenue												
	Dec	-263.3	-120.0	0.0	-143.3	0.0	0.0	0.0	0.0	0	0	0
1005 GF/Prgm		-50.0										
1061 CIP Rcpts		-213.3										
Reduce general fund program receipt authority and CIP receipt authority based on anticipated revenue.												
Transfer Six Aircraft Pilots to AWT Aircraft to Align Operations												
	Trout	-1,127.3	-1,127.3	0.0	0.0	0.0	0.0	0.0	0.0	-6	0	0
1004 Gen Fund		-1,127.3										
Transfer six full-time Aircraft Pilots (12-?104, 12-2036, 12-3090, 12-4229, 42-4303), range 22, located throughout the State, to AWT Aircraft to align with operational needs. These positions will report within the AWT Aircraft section command structure.												
Transfer State Trooper (12-1609) to Training Academy to Support Operations												
	Trout	-162.0	-162.0	0.0	0.0	0.0	0.0	0.0	0.0	-1	0	0
1004 Gen Fund		-162.0										
Transfer State Trooper (12-1609) from AST Detachments to Training Academy to support operations. The position is reclassified up to Corporal in support of larger academy sizes resulting from growing successful recruitment cycles.												
Transfer Administrative Officer II (12-1894) from Administrative Services to Align Operations												
	Trin	123.8	123.8	0.0	0.0	0.0	0.0	0.0	0.0	1	0	0
1004 Gen Fund		123.8										
Transfer a full-time Administrative Officer II (12-1894), range 19, located in Anchorage, from Administrative Services to AST Detachments to provide dedicated support to the division the position supports and a direct reporting relationship within that division.												

Change Record Detail - Multiple Scenarios with Descriptions
Department of Public Safety

Component: Alaska State Trooper Detachments (2325)
RDU: Alaska State Troopers (160)

Scenario/Change Record Title	Trans Type	Totals	Personal Services	Travel	Services	Commodities	Capital Outlay	Grants, Benefits	Miscellaneous	Positions		NP
										PFT	PPT	
Transfer Administrative Assistant II (12-3162) from Commissioners Office to Support Operations Support Bureau												
1004 Gen Fund	Trin	104.0	104.0	0.0	0.0	0.0	0.0	0.0	0.0	1	0	0
Transfer a full-time Administrative Assistant II (12-3162), range 14, located in Anchorage, from Commissioner's Office to AST Detachments in support of the Operations Support Bureau in Anchorage.												
Transfer Aircraft Pilot (12-3208) from AWT Aircraft and Reclass to Department Technology Officer I												
1004 Gen Fund	Trin	81.1	81.1	0.0	0.0	0.0	0.0	0.0	0.0	1	0	0
Transfer in Aircraft Pilot and reclassify to Department Technology Officer I (12-3208) in support of operations. This position is the point-of-contact for all telecommunications, software applications, and radio frequency components in the department. They also serve as the statewide interoperability coordinator. The position change is part of the department's organizational structure update for the Operations Support Bureau.												
Add New Non-Permanent State Trooper Background Investigator (12-N21002) in Support of Recruitment												
	PosAdj	0.0	0.0	0.0	0.0	0.0	0.0	0.0	0.0	0	0	1
Add new long-term non-permanent State Trooper (12-N21002), range 77, located in Anchorage, to serve as Background Investigator in the Recruitment unit in support of increasing academy sizes. This position assists with scenarios and issues encountered when hiring for Village Public Safety Officers.												
Fund Source Adjustment of CBRF to UGF												
1001 CBR Fund	FndChg	0.0	0.0	0.0	0.0	0.0	0.0	0.0	0.0	0	0	0
1004 Gen Fund		-20,625.7										
		20,625.7										
Replace Constitutional Budget Reserve Fund (CBRF) used as a one-time funding mechanism in FY2021.												
Totals		85,383.1	70,540.3	1,455.7	10,905.2	952.7	1,529.2	0.0	0.0	417	0	8

Line Item Detail (1676)
Department of Public Safety
Travel

Component: Alaska State Trooper Detachments (2325)

Line Number	Line Name		FY2020 Actuals	FY2021 Management Plan	FY2022 Governor
2000	Travel		1,688.7	1,425.7	1,455.7
Object Class	Servicing Agency	Explanation	FY2020 Actuals	FY2021 Management Plan	FY2022 Governor
2000 Travel Detail Totals			1,688.7	1,425.7	1,455.7
2000	In-State Employee Travel	In-state travel for routine patrol, post visits, training courses for officers, remote area patrol, investigations, special field assignments, transportation for witness appearances, and expert testimony in court.	880.7	600.0	630.0
2001	In-State Non-Employee Travel	In-state non-employee travel for routine patrol, post visits, training courses for officers, remote area patrol, investigations, special field assignments, transportation for witness appearances, and expert testimony in court.	160.0	100.0	100.0
2002	Out of State Employee Travel	Out-of-state travel primarily for training courses, conferences, and seminars for law enforcement officers. Specific events include polygraph use training, FBI National Academy, Southern Police Institute, homicide school, intoximeter instruction, radar instruction, International Chiefs of Police conference, and other similar law enforcement seminars. Non-employee travel includes transportation costs for witness appearances, expert testimony, and trainers' travel.	78.7	50.7	50.7
2005	Moving Costs	Moving costs for the entire division of	1,468.3	675.0	675.0

Line Item Detail (1676)
Department of Public Safety
Travel

Component: Alaska State Trooper Detachments (2325)

Object Class	Servicing Agency	Explanation	FY2020 Actuals	FY2021 Management Plan	FY2022 Governor
2000 Travel Detail Totals			1,688.7	1,425.7	1,455.7
2006	Other Travel Costs	Alaska State Troopers are budgeted in this component. This includes shipment of household goods, per diem, airfare, and temporary lodging costs for transfers of commissioned officers, new recruits and their families. Travel transfer to move travel expenditures to an RSA as well as moving expense offset due to new gross up process with federal tax changes.	-899.0	0.0	0.0

Line Item Detail (1676)
Department of Public Safety
Services

Component: Alaska State Trooper Detachments (2325)

Line Number	Line Name		FY2020 Actuals	FY2021 Management Plan	FY2022 Governor
3000	Services		12,963.3	11,043.5	10,905.2
Object Class	Servicing Agency	Explanation	FY2020 Actuals	FY2021 Management Plan	FY2022 Governor
3000 Services Detail Totals			12,963.3	11,043.5	10,905.2
3000	Education Services	Registration/tuition for employee development seminars, required law enforcement training, rifle range fees to meet yearly qualifications, and membership in law enforcement organizations.	90.4	100.0	100.0
3001	Financial Services	Interest income, penalties and fines.	5.5	5.0	5.0
3002	Legal and Judicial Services	Transcription services and case costs.	5.5	5.0	5.0
3003	Information Technology	Contracts with information technology firms to assist in data collection/reporting and software maintenance. Consulting services and software licenses for technology projects. Microsoft Exchange & ARMS Maintenance Agreement.	226.7	126.2	126.2
3004	Telecommunications	Long distance, local, cellular, basic equipment purchases, and satellite phones.	660.5	550.0	550.0
3005	Health Services	Medical services for employees (physicals/fit for duty exams) and non-employees (while in custody). Medical costs including sexual assault exams; emergency room care; psychological evaluations and drug screening for trooper and court service officer recruits; and biannual fitness-for-duty physicals for law	571.0	589.6	551.1

Line Item Detail (1676)
Department of Public Safety
Services

Component: Alaska State Trooper Detachments (2325)

Object Class	Servicing Agency	Explanation	FY2020 Actuals	FY2021 Management Plan	FY2022 Governor
3000 Services Detail Totals			12,963.3	11,043.5	10,905.2
		enforcement per unit contracts.			
3006	Delivery Services	Postage, freight, and courier service.	97.6	100.0	80.0
3007	Advertising and Promotions	Advertising for recruitment job fair newspaper ads. Promotional items for recruitment efforts and employee recognition.	214.7	235.0	225.0
3008	Utilities	Utility costs for trooper posts, storage, and offices including natural gas, heating oil, electricity, water and sewer, and waste disposal. Including other disposal and shredding services.	339.6	350.0	340.0
3009	Structure/Infrastructure/Land	Janitorial services, snow removal, lawn care, rentals and leases for copiers, office equipment, driving under the influence-related (DUI) towing services, DUI storage lots, evidence storage, and room rentals for training officers.	201.7	200.0	190.0
3010	Equipment/Machinery	Repair and maintenance of law enforcement equipment, marine equipment, snow machines and four-wheelers, computers and copiers, office and phone, radio and law enforcement equipment. Rental and leases for office equipment, law enforcement equipment, aircraft, and vehicles.	166.9	175.0	175.0
3011	Other Services	Contracts for special services, such as dispatch, prisoner transport, guard hires, clerical support with local police departments. Also includes printing, copier services, honorariums for presenters/trainers, interpreter services, K9 units, and	2,615.4	2,250.0	2,195.2

Line Item Detail (1676)
Department of Public Safety
Services

Component: Alaska State Trooper Detachments (2325)

Object Class	Servicing Agency	Explanation	FY2020 Actuals	FY2021 Management Plan	FY2022 Governor
3000 Services Detail Totals			12,963.3	11,043.5	10,905.2
		commissioned sales for the State Travel Office.			
3017	Inter-Agency Information Technology Non-Telecommunications	Admin - Department-wide Non-telecommunication (mainframe, computer support, sponsored agencies, and VPN).	1,703.3	1,500.0	1,500.0
3017	Inter-Agency Information Technology Non-Telecommunications	PubSaf - Information Systems (3199) Non-telecommunications (LAN/WAN & APSIN).	114.3	110.0	110.0
3018	Inter-Agency Information Technology Telecommunications	Admin - Department-wide Telecommunications (EPR & Basic Phone).	108.9	100.0	100.0
3018	Inter-Agency Information Technology Telecommunications	Courts - Department-wide RSA with Alaska Court Systems (ACS) for recurring connection costs for the Video Arraignment system	25.2	25.0	25.0
3018	Inter-Agency Information Technology Telecommunications	Trans - Department-wide RSA with DOTPF for two-way radio system repairs and maintenance.	70.0	75.4	75.4
3020	Inter-Agency Building Maintenance	Miscoded expenses.	0.1	0.0	0.0
3020	Inter-Agency Building Maintenance	Trans - Department-wide DPS Tudor Complex building and yard maintenance. RSAs with ADOTPF for maintenance of state-owned facilities/buildings (ADOTPF's Central, Northern, and Southeast Regions).	108.4	25.8	25.8
3021	Inter-Agency Mail	Admin - Department-wide Central Mail services.	8.7	9.0	9.0
3021	Inter-Agency Mail	PubSaf - AST Detachments (2325) DPS headquarters mail room services.	8.9	9.0	9.0
3022	Inter-Agency Human Resources	Admin - Department-wide HR Personnel support.	299.6	300.0	300.0
3023	Inter-Agency Building Leases	Admin - Department-wide Lease costs for AST facilities and lease administration costs charged by DOA.	600.9	500.0	500.0
3023	Inter-Agency Building Leases	Courts - Department-wide Leases with other state agencies (Nenana Courts, Dimond Court Lease, Lease Administration).	74.7	100.0	100.0
3023	Inter-Agency Building Leases	M&VA - Department-wide RSAs with DMVA, Army Guard	148.9	135.0	135.0

Line Item Detail (1676)
Department of Public Safety
Services

Component: Alaska State Trooper Detachments (2325)

Object Class	Servicing Agency	Explanation	FY2020 Actuals	FY2021 Management Plan	FY2022 Governor	
3000 Services Detail Totals			12,963.3	11,043.5	10,905.2	
		Facilities Maintenance, for lease costs, utilities, and maintenance services for the Nome and Kotzebue Armories, Emmonak and Selawik Posts, and for Nenana sub lease.				
3023	Inter-Agency Building Leases	Trans - Department-wide	Reimbursement to DOTPF for the costs of airport leases and tie-downs.	15.2	15.5	15.5
3024	Inter-Agency Legal	Law - Department-wide	Legal Services.	119.5	120.0	120.0
3026	Inter-Agency Insurance	Admin - Department-wide	Risk Management, property, and overhead insurance.	71.4	75.0	75.0
3027	Inter-Agency Financial	Admin - Department-wide	IRIS HRM/ ALDER/ IRIS financial support.	44.8	45.0	45.0
3028	Inter-Agency Americans with Disabilities Act Compliance	Admin - Department-wide	Americans with Disabilities Act (ADA) allocation for services.	3.1	3.5	3.5
3029	Inter-Agency Education/Training	Admin - Department-wide	DOA Division of personnel and Division of Finance training.	0.6	1.0	1.0
3029	Inter-Agency Education/Training	PubSaf - Training Academy (524)	RSA with DPS Training Academy for the Alaska Law Enforcement Training (ALET) academy, defensive tactic training, and firearm training courses.	29.6	27.5	27.5
3029	Inter-Agency Education/Training	Univ - Department-wide	RSA with the University of Alaska Southeast for the Alaska Law Enforcement Training (ALET) academy.	295.6	300.0	300.0
3036	Inter-Agency Safety	Courts - Department-wide	One-time Dillingham courtroom polycom install.	20.0	0.0	0.0
3036	Inter-Agency Safety	Trans - Department-wide	Radar recertification RSA with Division of Measurement Standards.	12.5	13.0	13.0
3036	Inter-Agency Safety	Trans - Department-wide	Badge billings for airport security and mechanical inspection related to DOT facility maintenance.	0.8	0.0	0.0

Line Item Detail (1676)
Department of Public Safety
Services

Component: Alaska State Trooper Detachments (2325)

Object Class	Servicing Agency	Explanation	FY2020 Actuals	FY2021 Management Plan	FY2022 Governor	
3000 Services Detail Totals			12,963.3	11,043.5	10,905.2	
3037	State Equipment Fleet	Trans - Department-wide	State Equipment Fleet costs, such as, fuel, fixed costs for asset maintenance, maintenance and repair services not included as a fixed asset cost, fixed cost services for equipment replacement, unallowable A87 expenses, and repairs and maintenance services due to accident damage.	3,280.9	2,349.1	2,354.1
3038	Inter-Agency Management/Consulting	Admin - Department-wide	Shared Services of Alaska travel and account payables support.	68.9	68.9	68.9
3038	Inter-Agency Management/Consulting	PubSaf - Administrative Services (525)	DPS Administrative Services cost allocations.	332.6	300.0	300.0
3038	Inter-Agency Management/Consulting	PubSaf - Commissioner's Office (523)	DPS Commissioner's Office cost allocation. DPS Office of Professional Services costs now included in Commissioner's Office cost allocation.	167.8	150.0	150.0
3038	Inter-Agency Management/Consulting	Trans - Department-wide	Contractual adjustments for various Bureau of Highway Patrol campaign RSAs.	-13.8	0.0	0.0
3038	Inter-Agency Management/Consulting	Univ - Department-wide	One-time FY20 agreement with UAA for C Detachment staffing study.	46.4	0.0	0.0

Line Item Detail (1676)
Department of Public Safety
Commodities

Component: Alaska State Trooper Detachments (2325)

Line Number	Line Name		FY2020 Actuals	FY2021 Management Plan	FY2022 Governor
4000	Commodities		870.9	947.7	952.7
Object Class	Servicing Agency	Explanation	FY2020 Actuals	FY2021 Management Plan	FY2022 Governor
4000 Commodities Detail Totals			870.9	947.7	952.7
4000	Business	Business, office, photographic, computer supplies and educational subscriptions for law enforcement manuals.	316.1	400.0	400.0
4001	Agricultural	Soil and fertilizer.	0.1	0.0	0.0
4002	Household/Institutional	Clothing, uniforms, cleaning, food and non-food supplies. Such as uniforms for commissioned officers, accident victim blankets, evidence bags, body bags, latex examination gloves, law enforcement forms, and drug testing kits.	151.6	187.7	187.7
4003	Scientific and Medical	Laboratory, scientific, and medical supplies.	22.6	20.0	25.0
4004	Safety	Law enforcement supplies, communications, ammunition, gun cleaning supplies, protective vests, first aid supplies, road flares, and other safety supplies.	249.8	125.0	125.0
4005	Building Materials	Building materials.	1.8	6.5	6.5
4006	Signs and Markers	One-time sign purchase.	0.6	1.0	1.0
4008	Aggregate	Miscoded Rural Trooper Housing expense.	0.5	0.0	0.0
4011	Electrical	Minor electrical purchases.	0.3	3.5	3.5
4012	Plumbing	Minor plumbing purchases.	0.6	1.0	1.0
4013	Lube Oils/Grease/Solvents	Lube oils, grease, solvents for law	1.1	3.0	3.0

Line Item Detail (1676)
Department of Public Safety
Commodities

Component: Alaska State Trooper Detachments (2325)

Object Class	Servicing Agency	Explanation	FY2020 Actuals	FY2021 Management Plan	FY2022 Governor
4000 Commodities Detail Totals			870.9	947.7	952.7
		enforcement equipment such as snowmachines.			
4015	Parts and Supplies	Parts and supplies used to repair and maintain equipment. Minor maintenance and repair supplies for state facilities including signs, plumbing and electrical supplies, janitorial supplies, and paint. Fuel for airplanes, helicopters, boats, snow machines, and all-terrain vehicles.	104.6	150.5	150.0
4016	Paint/Preservatives	Paint and preservatives.	0.2	1.5	1.5
4017	Sand	Sanding of walkways and/or parking areas for safety.	0.2	0.6	0.6
4018	Surface Chemicals	Deicing chemicals for walkways and/or parking areas for safety.	0.2	0.4	0.4
4019	Small Tools/Minor Equipment	Small Tools and minor equipment supplies used to repair and maintain equipment. Minor maintenance and repair supplies for state facilities including signs, plumbing and electrical supplies, janitorial supplies, and paint.	9.2	12.0	12.5
4020	Equipment Fuel	Fuel for equipment, airplanes, helicopters, boats, snow machines, and all-terrain vehicles.	11.4	35.0	35.0
4022	Commodity Transfer	One-time transfer of earthquake expenses for RSA reimbursement.	0.0	0.0	0.0

Line Item Detail (1676)
Department of Public Safety
Capital Outlay

Component: Alaska State Trooper Detachments (2325)

Line Number	Line Name		FY2020 Actuals	FY2021 Management Plan	FY2022 Governor
5000	Capital Outlay		2,244.9	1,529.2	1,529.2
Object Class	Servicing Agency	Explanation	FY2020 Actuals	FY2021 Management Plan	FY2022 Governor
5000 Capital Outlay Detail Totals			2,244.9	1,529.2	1,529.2
5004	Equipment	Law enforcement safety equipment such as diving equipment, ammunition, tasers, K9 equipment, transportation equipment, communication and IT equipment, and undercover surveillance equipment used in support of law enforcement activities. Actuals expenses are greater due to one-time year-end purchases.	2,244.9	1,529.2	1,529.2

Revenue Detail (1681)
Department of Public Safety

Component: Alaska State Trooper Detachments (2325)

Revenue Type (OMB Fund Code) Revenue Source	Component	Comment	FY2020 Actuals	FY2021 Management Plan	FY2022 Governor
5005 GF/Prgm (1005 GF/Prgm)			14.1	150.0	100.0
5103 Program Receipts - Charges for Services		Collection of fees for Alaska Records Management System and Fines, Forfeitures, Judgments and settlements, and collection of public records fees.	1.1	150.0	100.0
5108 Program Receipts General Government - Charges for Services		Collection of fees for Alaska Records Management System and Fines, Forfeitures, Judgments and settlements, and collection of public records fees.	13.0	0.0	0.0
5007 I/A Rcpts (1007 I/A Rcpts)			429.8	408.5	409.6
5301 Inter-Agency Receipts		Unallocated IA Receipt authority. Historically DPS AST Detachments receives request for services from other agencies for dispatch services, patrols, overtime enforcement activities, and misc. training, and other services.	204.1	139.5	139.5
5301 Inter-Agency Receipts	NatRes - Department-wide	Interagency agreement for overtime enforcement of the Knik River Public Use Area.	121.4	125.0	125.0
5301 Inter-Agency Receipts	PubSaf - Administrative Services (525)	Interagency Authority for AST Detachment Services (DPS Mailroom).	1.1	1.0	1.0
5301 Inter-Agency Receipts	PubSaf - AK Fire Standards Council (2428)	Interagency Authority for AST Detachment Services (DPS Mailroom).	2.1	1.5	1.6
5301 Inter-Agency Receipts	PubSaf - AK W-life Troopers Aircraft Sect (492)	Interagency Authority for AST Detachment Services (DPS Mailroom).	0.0	3.5	3.5
5301 Inter-Agency Receipts	PubSaf - AK W-life Troopers Marine Enforc (493)	Interagency Authority for AST Detachment Services (DPS Mailroom).	0.0	0.1	0.1
5301 Inter-Agency Receipts	PubSaf - Alaska Bureau of Highway	Interagency Authority for AST	0.4	0.3	0.3

Revenue Detail (1681)
Department of Public Safety

Component: Alaska State Trooper Detachments (2325)

Revenue Type (OMB Fund Code) Revenue Source	Component	Comment	FY2020 Actuals	FY2021 Management Plan	FY2022 Governor
	Patrol (3073)	Detachment Services (DPS Mailroom).			
5301 Inter-Agency Receipts	PubSaf - Alaska Bureau of Investigation (2744)	Interagency Authority for AST Detachment Services (DPS Mailroom).	8.8	12.6	12.6
5301 Inter-Agency Receipts	PubSaf - Alaska Wildlife Troopers (2746)	Interagency Authority for AST Detachment Services (DPS Mailroom).	2.4	2.3	2.3
5301 Inter-Agency Receipts	PubSaf - AST Detachments (2325)	Interagency Authority for AST Detachment Services (DPS Mailroom).	8.9	7.8	7.8
5301 Inter-Agency Receipts	PubSaf - Commissioner's Office (523)	Interagency Authority for AST Detachment Services (DPS Mailroom).	0.3	0.3	0.3
5301 Inter-Agency Receipts	PubSaf - Crim Just Information Systems (3200)	Interagency Authority for AST Detachment Services (DPS Mailroom).	39.8	51.0	52.0
5301 Inter-Agency Receipts	PubSaf - Fire and Life Safety (3051)	Interagency Authority for AST Detachment Services (DPS Mailroom).	5.2	4.4	4.4
5301 Inter-Agency Receipts	PubSaf - Information Systems (3199)	Interagency Authority for AST Detachment Services (DPS Mailroom).	25.7	47.9	47.9
5301 Inter-Agency Receipts	PubSaf - Special Projects (1001)	Interagency Authority for AST Detachment Services (DPS Mailroom).	0.0	1.5	1.5
5301 Inter-Agency Receipts	PubSaf - SW Drug and Alcohol Enforcement (3052)	Interagency Authority for AST Detachment Services (DPS Mailroom).	0.8	0.5	0.5
5301 Inter-Agency Receipts	PubSaf - Village Public Safety Officer Pg (3047)	Interagency Authority for AST Detachment Services (DPS Mailroom).	1.6	2.1	2.1
5301 Inter-Agency Receipts	Rev - Department-wide	DPS Inter-agency RSA for ARMS Case Management system.	7.2	7.2	7.2
5061 CIP Rcpts (1061 CIP Rcpts)			15.8	213.3	0.0
5351 Capital Improvement Project		Unallocated CIP Receipt Authority.	0.8	213.3	0.0

Revenue Detail (1681)
Department of Public Safety

Component: Alaska State Trooper Detachments (2325)

Revenue Type (OMB Fund Code) Revenue Source	Component	Comment	FY2020 Actuals	FY2021 Management Plan	FY2022 Governor
Inter-Agency 5351 Capital Improvement Project Inter-Agency	Trans - Department-wide	CIP RSA for 511 Management Center (511 MC) Reporting System with DOTPF. RSA was discontinued in October 2019.	15.0	0.0	0.0
6004 Gen Fund (1004 Gen Fund)			45.3	0.0	0.0
6003 General Fund Pblc Prtctn - Miscellaneous Fines/Forfeitures		DUI forfeiture	89.1	0.0	0.0
6004 General Fund Public Protection - Judgement Settlemnt		Judgement Settlement.	8.8	0.0	0.0
6044 General Fund - Jury & Worker's Compensation Recovery		Jury and Worker's Compensation Recovery.	0.8	0.0	0.0
6046 General Fund - Prior Year Reimbursement Recovery		Prior Year Reimbursement Recovery.	-1.4	0.0	0.0
6047 General Fund - Miscellaneous		Miscellaneous general fund expense.	-52.0	0.0	0.0
6092 MHTAAR (1092 MHTAAR)			0.0	0.0	80.0
6691 Mental Health Trust Auth Auth Rec - Miscellaneous		Mental health trust revenue for Crisis Intervention Training.	0.0	0.0	80.0

Inter-Agency Services (1682)
Department of Public Safety

Component: Alaska State Trooper Detachments (2325)

				FY2020 Actuals	FY2021 Management Plan	FY2022 Governor
Component Totals				7,767.7	6,357.7	6,362.7
With Department of Administration				2,910.2	2,602.4	2,602.4
With Department of Public Safety				653.2	596.5	596.5
With Judiciary				119.9	125.0	125.0
With Department of Transportation/Public Facilities				3,474.0	2,478.8	2,483.8
With Department of Military and Veterans Affairs				148.9	135.0	135.0
With Department of Law				119.5	120.0	120.0
With University of Alaska				342.0	300.0	300.0
Object Class	Servicing Agency	Explanation		FY2020 Actuals	FY2021 Management Plan	FY2022 Governor
3017	Inter-Agency Information Technology Non-Telecommunications	Admin - Department-wide	Non-telecommunication (mainframe, computer support, sponsored agencies, and VPN).	1,703.3	1,500.0	1,500.0
3017	Inter-Agency Information Technology Non-Telecommunications	PubSaf - Information Systems (3199)	Non-telecommunications (LAN/WAN & APSIN).	114.3	110.0	110.0
3018	Inter-Agency Information Technology Telecommunications	Admin - Department-wide	Telecommunications (EPR & Basic Phone).	108.9	100.0	100.0
3018	Inter-Agency Information Technology Telecommunications	Courts - Department-wide	RSA with Alaska Court Systems (ACS) for recurring connection costs for the Video Arraignment system	25.2	25.0	25.0
3018	Inter-Agency Information Technology Telecommunications	Trans - Department-wide	RSA with DOTPF for two-way radio system repairs and maintenance.	70.0	75.4	75.4
3020	Inter-Agency Building Maintenance	Trans - Department-wide	DPS Tudor Complex building and yard maintenance. RSAs with ADOTPF for maintenance of state-owned facilities/buildings (ADOTPF's Central, Northern, and Southeast Regions).	108.4	25.8	25.8
3021	Inter-Agency Mail	Admin - Department-wide	Central Mail services.	8.7	9.0	9.0
3021	Inter-Agency Mail	PubSaf - AST Detachments (2325)	DPS headquarters mail room services.	8.9	9.0	9.0

Inter-Agency Services (1682)
Department of Public Safety

Component: Alaska State Trooper Detachments (2325)

Object Class	Servicing Agency	Explanation	FY2020 Actuals	FY2021 Management Plan	FY2022 Governor	
3022	Inter-Agency Human Resources	Admin - Department-wide	HR Personnel support.	299.6	300.0	300.0
3023	Inter-Agency Building Leases	Admin - Department-wide	Lease costs for AST facilities and lease administration costs charged by DOA.	600.9	500.0	500.0
3023	Inter-Agency Building Leases	Courts - Department-wide	Leases with other state agencies (Nenana Courts, Dimond Court Lease, Lease Administration).	74.7	100.0	100.0
3023	Inter-Agency Building Leases	M&VA - Department-wide	RSAs with DMVA, Army Guard Facilities Maintenance, for lease costs, utilities, and maintenance services for the Nome and Kotzebue Armories, Emmonak and Selawik Posts, and for Nenana sub lease.	148.9	135.0	135.0
3023	Inter-Agency Building Leases	Trans - Department-wide	Reimbursement to DOTPF for the costs of airport leases and tie-downs.	15.2	15.5	15.5
3024	Inter-Agency Legal	Law - Department-wide	Legal Services.	119.5	120.0	120.0
3026	Inter-Agency Insurance	Admin - Department-wide	Risk Management, property, and overhead insurance.	71.4	75.0	75.0
3027	Inter-Agency Financial	Admin - Department-wide	IRIS HRM/ ALDER/ IRIS financial support.	44.8	45.0	45.0
3028	Inter-Agency Americans with Disabilities Act Compliance	Admin - Department-wide	Americans with Disabilities Act (ADA) allocation for services.	3.1	3.5	3.5
3029	Inter-Agency Education/Training	Admin - Department-wide	DOA Division of personnel and Division of Finance training.	0.6	1.0	1.0
3029	Inter-Agency Education/Training	PubSaf - Training Academy (524)	RSA with DPS Training Academy for the Alaska Law Enforcement Training (ALET) academy, defensive tactic training, and firearm training courses.	29.6	27.5	27.5
3029	Inter-Agency Education/Training	Univ - Department-wide	RSA with the University of Alaska Southeast for the Alaska Law Enforcement Training (ALET) academy.	295.6	300.0	300.0
3036	Inter-Agency Safety	Courts - Department-wide	One-time Dillingham courtroom	20.0	0.0	0.0

Inter-Agency Services (1682)
Department of Public Safety

Component: Alaska State Trooper Detachments (2325)

Object Class		Servicing Agency	Explanation	FY2020 Actuals	FY2021 Management Plan	FY2022 Governor
			polycom install.			
3036	Inter-Agency Safety	Trans - Department-wide	Radar recertification RSA with Division of Measurement Standards.	12.5	13.0	13.0
3036	Inter-Agency Safety	Trans - Department-wide	Badge billings for airport security and mechanical inspection related to DOT facility maintenance.	0.8	0.0	0.0
3037	State Equipment Fleet	Trans - Department-wide	State Equipment Fleet costs, such as, fuel, fixed costs for asset maintenance, maintenance and repair services not included as a fixed asset cost, fixed cost services for equipment replacement, unallowable A87 expenses, and repairs and maintenance services due to accident damage.	3,280.9	2,349.1	2,354.1
3038	Inter-Agency Management/Consulting	Admin - Department-wide	Shared Services of Alaska travel and account payables support.	68.9	68.9	68.9
3038	Inter-Agency Management/Consulting	PubSaf - Administrative Services (525)	DPS Administrative Services cost allocations.	332.6	300.0	300.0
3038	Inter-Agency Management/Consulting	PubSaf - Commissioner's Office (523)	DPS Commissioner's Office cost allocation. DPS Office of Professional Services costs now included in Commissioner's Office cost allocation.	167.8	150.0	150.0
3038	Inter-Agency Management/Consulting	Trans - Department-wide	Contractual adjustments for various Bureau of Highway Patrol campaign RSAs.	-13.8	0.0	0.0
3038	Inter-Agency Management/Consulting	Univ - Department-wide	One-time FY20 agreement with UAA for C Detachment staffing study.	46.4	0.0	0.0

Personal Services Expenditure Detail
Department of Public Safety

Scenario: FY2022 Governor (17280)
Component: Alaska State Trooper Detachments (2325)
RDU: Alaska State Troopers (160)

PCN	Job Class Title	Time Status	Retire Code	Barg Unit	Location	Salary Sched	Range / Step	Comp Months	Split / Count	Annual Salaries	COLA	Premium Pay	Annual Benefits	Total Costs	UGF Amount
02-9524	Criminal Justice Technician I	FT	A	GP	Kotzebue	160	12A / B	12.0		65,062	895	0	43,241	109,198	65,519
10-5047	Er Svc Disp I	FT	A	GP	Fairbanks	103	15C / D	12.0		53,952	799	4,137	40,620	99,508	99,508
12-?103	Administrative Assistant I	FT	A	GP	Anchorage	100	12B / C	12.0		41,954	577	0	34,557	77,088	77,088
12-?112	Criminal Justice Technician II	FT	A	GP	Ketchikan	100	14B / C	12.0		47,834	658	0	36,766	85,258	85,258
12-?113	Criminal Justice Technician II	FT	A	GP	Palmer	100	14B / C	12.0		47,834	658	0	36,766	85,258	85,258
12-?114	Criminal Justice Technician II	FT	A	GP	Palmer	100	14B / C	12.0		47,834	658	0	36,766	85,258	85,258
12-?115	Criminal Justice Technician II	FT	A	GP	Anchorage	100	14B / C	12.0		47,834	658	0	36,766	85,258	85,258
12-?116	Criminal Justice Technician II	FT	A	GP	Fairbanks	103	14B / C	12.0		49,267	678	0	37,305	87,250	87,250
12-?117	Office Assistant II	FT	A	GP	Anchorage	100	10B / C	12.0		37,187	512	0	32,765	70,464	70,464
12-?118	Public Safety Technician II	FT	A	GP	Bethel	150	11B / C	12.0		59,163	814	0	41,024	101,001	101,001
12-?119	State Trooper	FT	A	AA	Ambler	160	77C	12.0		134,950	5,985	16,813	75,169	232,917	232,917
12-?120	State Trooper	FT	A	AA	Ambler	160	77C	12.0		134,950	5,985	16,813	75,169	232,917	232,917
12-?126	State Trooper	FT	A	AA	Glennallen	1FF	77C	12.0		93,808	4,364	11,918	58,418	168,508	168,508
12-?127	State Trooper	FT	A	AA	Kotzebue	160	77C	12.0		134,950	5,985	16,813	75,169	232,917	232,917
12-?128	State Trooper	FT	A	AA	Kotzebue	160	77C	12.0		134,950	5,985	16,813	75,169	232,917	232,917
12-?129	State Trooper	FT	A	AA	Nome	137	77C	12.0		115,502	5,366	14,499	67,541	202,908	202,908
12-?130	State Trooper	FT	A	AA	Saint Marys	150	77C	12.0		126,506	5,253	756	66,511	199,026	199,026
12-?131	State Trooper	FT	A	AA	Saint Michael	150	77C	12.0		126,506	5,642	15,808	72,168	220,124	220,124
12-?132	State Trooper	FT	A	AA	Saint Michael	150	77C	12.0		126,506	5,642	15,808	72,168	220,124	220,124
12-?133	State Trooper	FT	A	AA	Unalakleet	150	77C	12.0		126,506	5,642	15,808	72,168	220,124	220,124
12-0099	Sergeant DPS	FT	P	AA	Anchorage	100	79K	12.0		117,437	5,455	14,729	68,354	205,975	205,975
12-1001	Lieutenant DPS	FT	P	SS	Anchorage	99	24Q / R	12.0		173,536	0	756	82,399	256,691	256,691
12-1005	Er Svc Disp I	FT	A	GP	Ketchikan	100	15M	12.0		68,952	1,033	6,165	47,019	123,169	123,169
12-1007	Er Svc Disp I	FT	A	GP	Ketchikan	100	15A / B	12.0		49,530	783	7,390	40,181	97,884	97,884
12-1013	Captain DPS	FT	P	SS	Anchorage	100	25N	12.0		165,654	0	4,800	81,192	251,646	251,646
12-1014	Captain DPS	FT	P	SS	Fairbanks	99	25Q	12.0		186,058	0	4,800	87,609	278,467	278,467
12-1016	Information System Coordinator	FT	A	GP	Anchorage	100	18B / C	12.0		63,083	868	0	42,497	106,448	106,448
12-1019	State Trooper	FT	P	AA	Nome	137	77D / E	12.0		121,347	5,634	21,525	72,373	220,879	220,879
12-1024	Captain DPS	FT	P	SS	Soldotna	99	25R	12.0		185,293	0	4,800	87,368	277,461	277,461
12-1027	Major DPS	FT	P	SS	Anchorage	99	26Q	12.0		187,179	0	756	86,689	274,624	274,624
12-1029	State Trooper	FT	P	AA	Palmer	100	77E / F	12.0		93,877	4,743	21,046	61,874	181,540	181,540
12-1031	State Trooper	FT	P	AA	Kotzebue	99	77M / N	12.0		187,052	8,986	40,824	99,107	335,969	335,969

Note: If a position is split, an asterisk (*) will appear in the Split/Count column. If the split position is also counted in the component, two asterisks (**) will appear in this column. [No valid job title] appearing in the Job Class Title indicates that the PCN has an invalid class code or invalid range for the class code effective date of this scenario.

Personal Services Expenditure Detail
Department of Public Safety

Scenario: FY2022 Governor (17280)
Component: Alaska State Trooper Detachments (2325)
RDU: Alaska State Troopers (160)

PCN	Job Class Title	Time Status	Retire Code	Barg Unit	Location	Salary Sched	Range / Step	Comp Months	Split / Count	Annual Salaries	COLA	Premium Pay	Annual Benefits	Total Costs	UGF Amount
12-1034	State Trooper	FT	P	AA	Ketchikan	1EE	77M	12.0		117,291	5,657	24,321	71,904	219,173	219,173
12-1037	Sergeant DPS	FT	P	AA	Saint Marys	99	79N / O	12.0		184,388	8,627	34,366	96,238	323,619	323,619
12-1039	Sergeant DPS	FT	P	AA	Anchorage	100	79N / O	12.0		137,352	6,199	19,846	76,879	240,276	240,276
12-1040	State Trooper	FT	P	AA	Juneau	105	77Q / R	12.0		137,758	6,382	24,067	78,334	246,541	246,541
12-1041	State Trooper	FT	P	AA	Tok	115	77E / F	12.0		105,699	5,297	22,636	66,915	200,547	200,547
12-1045	Sergeant DPS	FT	P	AA	Tok	115	79J	12.0		130,166	6,052	23,296	75,704	235,218	235,218
12-1046	State Trooper	FT	P	AA	Fairbanks	99	77Q / R	12.0		141,501	6,391	20,569	78,411	246,872	246,872
12-1048	Sergeant DPS	FT	P	AA	Wasilla	99	79K / L	12.0		121,479	5,668	22,250	72,643	222,040	222,040
12-1049	State Trooper Recruit	FT	P	AA	Wasilla	100	75C / D	12.0		75,302	4,032	22,379	55,395	157,108	157,108
12-1055	Office Assistant II	FT	A	GP	Soldotna	100	10K	12.0		45,864	631	0	36,026	82,521	82,521
12-1057	Lieutenant DPS	FT	P	SS	Palmer	99	24O / P	12.0		161,080	0	4,800	79,753	245,633	245,633
12-1061	Sergeant DPS	FT	P	AA	Ketchikan	99	79D / E	12.0		103,398	4,964	16,867	63,882	189,111	189,111
12-1062	Captain DPS	FT	P	SS	Anchorage	99	25O / P	12.0		173,775	0	3,532	83,347	260,654	260,654
12-1064	Sergeant DPS	FT	P	AA	Palmer	100	79M / N	12.0		135,411	5,820	12,171	73,854	227,256	227,256
12-1065	State Trooper	FT	P	AA	Fairbanks	103	77C	12.0		86,861	3,731	3,532	52,656	146,780	146,780
12-1066	Sergeant DPS	FT	P	AA	Anchorage	100	79F / J	12.0		112,051	5,055	10,426	64,713	192,245	192,245
12-1067	State Trooper	FT	P	AA	Soldotna	99	77C / D	12.0		87,464	4,327	17,379	58,086	167,256	167,256
12-1069	State Trooper	FT	P	AA	Wasilla	100	77J	12.0		97,677	4,757	17,577	61,999	182,010	182,010
12-1070	State Trooper	FT	P	AA	Palmer	100	77B / C	12.0		84,075	4,370	21,812	58,479	168,736	168,736
12-1074	Captain DPS	FT	P	SS	Palmer	99	25P / Q	12.0		183,784	0	6,186	87,329	277,299	277,299
12-1078	Er Svc Disp II	FT	A	GP	Fairbanks	103	16E / F	12.0		62,477	979	8,645	45,518	117,619	117,619
12-1079	Administrative Assistant II	FT	A	GP	Fairbanks	103	14K / L	12.0		62,325	857	0	42,212	105,394	105,394
12-1080	Er Svc Disp I	FT	A	GP	Fairbanks	103	15C / D	12.0		55,402	875	8,170	42,681	107,128	107,128
12-1081	Er Svc Disp I	FT	A	GP	Fairbanks	103	15J	12.0		64,526	1,000	8,189	46,117	119,832	119,832
12-1082	Er Svc Disp I	FT	A	GP	Fairbanks	103	15A / B	12.0		51,022	755	3,855	39,413	95,045	95,045
12-1083	Er Svc Disp I	FT	A	GP	Fairbanks	103	15B / C	12.0		53,781	825	6,153	41,314	102,073	102,073
12-1086	Sergeant DPS	FT	P	AA	Dillingham	99	79M	12.0		179,691	8,178	27,697	92,663	308,229	308,229
12-1088	State Trooper	FT	P	AA	Soldotna	100	77F / J	12.0		102,943	4,920	16,272	63,487	187,622	187,622
12-1091	State Trooper	FT	P	AA	Ketchikan	99	77N	12.0		125,659	5,662	15,719	71,816	218,856	218,856
12-1093	State Trooper	FT	P	AA	Wasilla	99	77L / M	12.0		110,278	5,334	18,946	67,249	201,807	201,807
12-1094	State Trooper	FT	P	AA	Palmer	99	77M / N	12.0		115,792	5,678	28,186	72,721	222,377	222,377
12-1097	Sergeant DPS	FT	P	AA	Soldotna	100	79O / P	12.0		140,745	6,018	11,873	75,438	234,074	234,074
12-1098	State Trooper	FT	P	AA	Nome	137	77C	12.0		115,502	5,663	21,698	70,246	213,109	213,109
12-1100	Sergeant DPS	FT	P	AA	Nome	99	79N / O	12.0		192,489	8,684	27,722	96,696	325,591	325,591
12-1101	State Trooper	FT	P	AA	Bethel	99	77N / O	12.0		181,919	8,290	28,309	93,557	312,075	312,075
12-1106	Office Assistant II	FT	A	GP	Fairbanks	103	10F / G	12.0		43,222	595	0	35,033	78,850	78,850
12-1109	Administrative Assistant II	FT	A	GP	Anchorage	100	14B / C	12.0		47,492	653	0	36,638	84,783	84,783
12-1111	Administrative Assistant II	FT	A	GP	Ketchikan	100	14J	12.0		58,286	802	0	40,694	99,782	99,782

Note: If a position is split, an asterisk (*) will appear in the Split/Count column. If the split position is also counted in the component, two asterisks (**) will appear in this column. [No valid job title] appearing in the Job Class Title indicates that the PCN has an invalid class code or invalid range for the class code effective date of this scenario.

Personal Services Expenditure Detail
Department of Public Safety

Scenario: FY2022 Governor (17280)
Component: Alaska State Trooper Detachments (2325)
RDU: Alaska State Troopers (160)

PCN	Job Class Title	Time Status	Retire Code	Barg Unit	Location	Salary Sched	Range / Step	Comp Months	Split / Count	Annual Salaries	COLA	Premium Pay	Annual Benefits	Total Costs	UGF Amount
12-1113	Lieutenant DPS	FT	P	SS	Soldotna	99	24L / M	12.0		147,888	0	4,800	75,604	228,292	228,292
12-1115	Lieutenant DPS	FT	P	SS	Bethel	99	24P / Q	12.0		257,932	0	4,800	110,213	372,945	372,945
12-1117	Er Svc Disp I	FT	A	GP	Soldotna	100	15A / B	12.0		49,530	758	5,566	39,495	95,349	95,349
12-1119	Er Svc Disp II	FT	A	GP	Fairbanks	103	16G	12.0		66,417	1,018	7,599	46,606	121,640	121,640
12-1120	Criminal Justice Technician I	FT	A	GP	Bethel	150	12C / D	12.0		64,955	894	0	43,200	109,049	109,049
12-1122	State Trooper	FT	P	AA	Ketchikan	1EE	77O	12.0		126,256	5,648	15,779	72,063	219,746	219,746
12-1123	State Trooper	FT	P	AA	Seward	99	77E / F	12.0		94,152	4,547	16,011	60,086	174,796	174,796
12-1125	State Trooper	FT	P	AA	Soldotna	100	77C	12.0		84,302	4,222	17,992	57,128	163,644	163,644
12-1128	Sergeant DPS	FT	P	AA	Fairbanks	99	79M / N	12.0		134,456	6,294	25,160	77,639	243,549	243,549
12-1130	State Trooper	FT	P	AA	King Salmon	150	77K	12.0		152,069	7,018	25,894	83,409	268,390	268,390
12-1133	State Trooper	FT	P	AA	Glennallen	1FF	77E / F	12.0		104,296	5,218	22,121	66,194	197,829	197,829
12-1138	State Trooper	FT	P	AA	Wasilla	100	77J	12.0		105,894	5,101	17,698	65,132	193,825	193,825
12-1140	Sergeant DPS	FT	P	AA	Kenai	100	79O	12.0		136,074	6,194	20,991	76,837	240,096	240,096
12-1150	Lieutenant DPS	FT	P	SS	Anchorage	100	24O / P	12.0		160,228	0	4,800	79,485	244,513	244,513
12-1155	Office Assistant III	FT	A	GP	Aniak	150	11G	12.0		68,250	939	0	44,439	113,628	113,628
12-1158	Division Director - Px	FT	P	XE	Anchorage	N00	27S / T	12.0		171,878	0	0	81,496	253,374	253,374
12-1161	Lieutenant DPS	FT	P	SS	Wasilla	100	24M / N	12.0		152,673	0	6,186	77,545	236,404	236,404
12-1164	Administrative Assistant II	FT	A	SS	Soldotna	100	14C / D	12.0		51,836	0	0	38,310	90,146	90,146
12-1167	Er Svc Disp I	FT	A	GP	Fairbanks	103	15L / M	12.0		69,444	1,028	5,292	46,876	122,640	122,640
12-1171	Er Svc Disp I	FT	A	GP	Fairbanks	103	15C / D	12.0		55,402	819	4,137	41,165	101,523	101,523
12-1173	Sergeant DPS	FT	P	AA	Fairbanks	99	79L / M	12.0		128,750	5,693	11,232	71,292	216,967	216,967
12-1177	State Trooper	FT	P	AA	Nome	137	77D / E	12.0		123,968	5,649	19,278	72,491	221,386	221,386
12-1183	State Trooper	FT	P	AA	Seward	100	77F / J	12.0		95,333	4,837	21,867	62,730	184,767	184,767
12-1185	State Trooper	FT	P	AA	Delta Junction	99	77N / O	12.0		136,800	6,553	29,376	79,702	252,431	252,431
12-1188	State Trooper	FT	P	AA	Anchor Point	100	77D / E	12.0		88,559	4,328	16,300	58,092	167,279	167,279
12-1191	State Trooper Recruit	FT	P	AA	Palmer	100	75D / E	12.0		76,481	3,725	13,781	52,607	146,594	146,594
12-1192	Court Services Officer	FT	P	A2	Nome	537	74M	12.0		111,509	3,366	10,807	64,653	190,335	190,335
12-1193	Sergeant DPS	FT	P	AA	Healy	115	79L	12.0		140,130	6,568	26,415	79,818	252,931	252,931
12-1196	Office Assistant III	FT	A	GP	Juneau	105	11J / K	12.0		49,897	686	0	37,542	88,125	88,125
12-1209	State Trooper	FT	P	AA	Aniak	150	77D / E	12.0		111,840	4,938	7,800	63,647	188,225	188,225
12-1210	Information Officer II	FT	A	GP	Anchorage	100	17B / C	12.0		59,153	814	0	41,020	100,987	100,987
12-1211	State Trooper	FT	P	AA	Fairbanks	103	77E / F	12.0		95,839	4,817	20,865	62,544	184,065	184,065
12-1212	Sergeant DPS	FT	P	AA	Fairbanks	103	79E / F	12.0		109,515	5,250	17,689	66,490	198,944	198,944
12-1213	State Trooper	FT	P	AA	Fairbanks	103	77C / D	12.0		89,854	4,710	24,260	61,570	180,394	180,394
12-1215	State Trooper	FT	P	AA	Wasilla	99	77N / O	12.0		124,478	6,013	27,995	75,393	233,879	233,879
12-1218	Lieutenant DPS	FT	P	SS	Anchorage	100	24N / O	12.0		156,264	0	6,186	78,674	241,124	241,124
12-1219	Lieutenant DPS	FT	P	SS	Fairbanks	103	24P	12.0		167,672	0	7,918	82,807	258,397	258,397

Note: If a position is split, an asterisk (*) will appear in the Split/Count column. If the split position is also counted in the component, two asterisks (**) will appear in this column. [No valid job title] appearing in the Job Class Title indicates that the PCN has an invalid class code or invalid range for the class code effective date of this scenario.

Personal Services Expenditure Detail
Department of Public Safety

Scenario: FY2022 Governor (17280)
Component: Alaska State Trooper Detachments (2325)
RDU: Alaska State Troopers (160)

PCN	Job Class Title	Time Status	Retire Code	Barg Unit	Location	Salary Sched	Range / Step	Comp Months	Split / Count	Annual Salaries	COLA	Premium Pay	Annual Benefits	Total Costs	UGF Amount
12-1221	Office Assistant III	FT	A	GP	Anchor Point	100	11B / C	12.0		39,439	543	0	33,612	73,594	73,594
12-1222	Administrative Assistant I	FT	A	GP	Fairbanks	103	12L	12.0		55,692	766	0	39,719	96,177	96,177
12-1231	State Trooper	FT	P	AA	Fairbanks	103	77M / N	12.0		116,057	5,650	25,873	72,024	219,604	219,604
12-1235	State Trooper	FT	P	AA	Soldotna	99	77L / M	12.0		108,134	5,341	21,262	67,313	202,050	202,050
12-1236	State Trooper	FT	P	AA	Soldotna	100	77C	12.0		84,302	4,139	15,986	56,375	160,802	160,802
12-1237	State Trooper	FT	P	AA	Kodiak	111	77F / J	12.0		111,167	5,357	18,615	67,458	202,597	202,597
12-1238	State Trooper	FT	P	AA	Kodiak	99	77F / J	12.0		110,730	5,446	21,225	68,275	205,676	205,676
12-1241	Er Svc Disp II	FT	A	SS	Ketchikan	100	16A / B	12.0		56,482	0	3,997	41,558	102,037	102,037
12-1242	Er Svc Disp II	FT	A	GP	Fairbanks	103	16F / G	12.0		64,884	1,027	9,760	46,842	122,513	122,513
12-1243	Secretary	FT	A	GP	Anchorage	100	11J	12.0		47,385	652	0	36,598	84,635	84,635
12-1249	Office Assistant III	FT	A	GP	Seward	100	11D / E	12.0		42,010	578	0	34,578	77,166	77,166
12-1251	State Trooper	FT	P	AA	Anchor Point	99	77F / J	12.0		100,128	5,138	24,346	65,464	195,076	195,076
12-1252	State Trooper	FT	P	AA	Kodiak	99	77F / J	12.0		111,167	5,473	21,424	68,514	206,578	206,578
12-1255	State Trooper	FT	P	AA	Fairbanks	99	77F / J	12.0		107,818	5,099	15,731	65,116	193,764	193,764
12-1256	State Trooper	FT	P	AA	Bethel	99	77M / N	12.0		174,640	8,125	31,388	92,236	306,389	306,389
12-1257	State Trooper	FT	P	AA	Bethel	150	77J / K	12.0		132,367	6,040	20,793	75,609	234,809	234,809
12-1258	Lieutenant DPS	FT	P	SS	Fairbanks	99	24Q / R	12.0		178,745	0	6,186	85,745	270,676	270,676
12-1259	State Trooper	FT	P	AA	Delta Junction	99	77M / N	12.0		129,539	6,089	24,865	76,000	236,493	236,493
12-1261	State Trooper	FT	P	AA	Kotzebue	160	77Q	12.0		209,909	9,557	32,451	103,662	355,579	355,579
12-1262	State Trooper	FT	P	AA	Wasilla	100	77E / F	12.0		92,882	4,911	26,101	63,400	187,294	187,294
12-1263	State Trooper	FT	P	AA	Wasilla	100	77B / C	12.0		87,894	4,402	18,760	58,767	169,823	169,823
12-1265	State Trooper	FT	P	AA	Palmer	100	77C	12.0		84,302	4,335	20,728	58,157	167,522	167,522
12-1268	State Trooper	FT	P	AA	Palmer	100	77C / D	12.0		87,201	4,213	14,866	57,043	163,323	163,323
12-1272	State Trooper	FT	P	AA	Galena	137	77E / F	12.0		128,632	6,147	27,237	76,461	238,477	238,477
12-1275	State Trooper	FT	P	AA	Fairbanks	103	77E / F	12.0		95,596	4,849	21,886	62,836	185,167	185,167
12-1278	State Trooper	FT	P	AA	Fairbanks	103	77C / D	12.0		87,977	4,351	17,446	58,304	168,078	168,078
12-1279	State Trooper	FT	P	AA	Palmer	100	77M / N	12.0		118,274	5,697	19,750	70,556	214,277	214,277
12-1281	State Trooper	FT	P	AA	Aniak	150	77M	12.0		169,818	7,729	26,177	89,080	292,804	292,804
12-1282	State Trooper	FT	P	AA	Cantwell	115	77C	12.0		96,990	5,062	25,661	64,779	192,492	192,492
12-1283	State Trooper	FT	P	AA	Palmer	100	77C	12.0		84,302	4,319	20,330	58,007	166,958	166,958
12-1285	State Trooper	FT	P	AA	Craig	1EE	77C / D	12.0		93,775	4,772	21,854	62,140	182,541	182,541
12-1289	State Trooper	FT	P	AA	Healy	115	77P	12.0		140,130	6,491	24,474	79,208	250,303	250,303
12-1299	Criminal Justice Technician	FT	A	GP	Anchorage	100	12B / C	12.0		42,010	578	0	34,578	77,166	77,166
12-1303	Sergeant DPS	FT	P	AA	Palmer	99	79L / M	12.0		126,402	5,968	24,938	75,036	232,344	232,344
12-1329	Er Svc Disp I	FT	A	GP	Soldotna	100	15G / J	12.0		60,606	929	6,887	44,154	112,576	112,576
12-1331	Criminal Justice Technician	FT	A	GP	Anchorage	100	12B / C	12.0		42,066	579	0	34,599	77,244	77,244

Note: If a position is split, an asterisk (*) will appear in the Split/Count column. If the split position is also counted in the component, two asterisks (**) will appear in this column. [No valid job title] appearing in the Job Class Title indicates that the PCN has an invalid class code or invalid range for the class code effective date of this scenario.

Personal Services Expenditure Detail
Department of Public Safety

Scenario: FY2022 Governor (17280)
Component: Alaska State Trooper Detachments (2325)
RDU: Alaska State Troopers (160)

PCN	Job Class Title	Time Status	Retire Code	Barg Unit	Location	Salary Sched	Range / Step	Comp Months	Split / Count	Annual Salaries	COLA	Premium Pay	Annual Benefits	Total Costs	UGF Amount
12-1332	State Trooper	FT	P	AA	Ketchikan	1EE	77C	12.0		90,667	4,219	11,544	57,097	163,527	163,527
12-1334	State Trooper	FT	P	AA	Saint Marys	99	77C / D	12.0		109,006	5,263	18,505	66,605	199,379	199,379
12-1335	State Trooper	FT	P	AA	Fairbanks	103	77D / E	12.0		93,215	4,636	19,105	60,896	177,852	177,852
12-1337	State Trooper	FT	P	AA	Aniak	99	77F / J	12.0		127,085	5,804	20,092	73,727	226,708	226,708
12-1338	State Trooper	FT	P	AA	Glennallen	99	77L / M	12.0		121,821	5,712	23,017	72,991	223,541	223,541
12-1340	State Trooper	FT	P	AA	Soldotna	100	77C	12.0		84,302	4,232	18,223	57,215	163,972	163,972
12-1341	State Trooper	FT	P	AA	Kodiak	99	77L / M	12.0		123,579	5,641	19,454	72,424	221,098	221,098
12-1351	Office Assistant IV	FT	A	SS	Palmer	500	12E / F	12.0		47,974	0	0	36,859	84,833	84,833
12-1353	Lieutenant DPS	FT	P	SS	Anchorage	100	24J	12.0		134,354	0	12,312	73,710	220,376	220,376
12-1354	Sergeant DPS	FT	P	AA	Soldotna	100	79J	12.0		117,428	5,728	27,821	73,121	224,098	224,098
12-1356	Sergeant DPS	FT	P	AA	Wasilla	100	79N / O	12.0		141,617	6,492	23,001	79,212	250,322	250,322
12-1362	Criminal Justice Technician 	FT	A	GP	Fairbanks	103	12M	12.0		57,506	791	0	40,401	98,698	98,698
12-1363	Office Assistant III	FT	A	GP	Delta Junction	100	11J / K	12.0		47,513	654	0	36,646	84,813	84,813
12-1367	Office Assistant II	FT	A	GP	Soldotna	100	10A / B	12.0		36,017	496	0	32,326	68,839	68,839
12-1371	State Trooper	FT	P	AA	Bethel	150	77K	12.0		133,006	6,132	22,484	76,342	237,964	237,964
12-1373	State Trooper	FT	P	AA	Glennallen	1FF	77F	12.0		104,770	5,450	27,278	68,310	205,808	205,808
12-1374	State Trooper	FT	P	AA	Seward	100	77E / F	12.0		93,451	4,698	20,384	61,465	179,998	179,998
12-1378	State Trooper	FT	P	AA	Wasilla	99	77J / K	12.0		101,019	5,188	24,671	65,921	196,799	196,799
12-1380	Criminal Justice Technician 	FT	A	GP	Fairbanks	103	12M	12.0		57,506	791	0	40,401	98,698	98,698
12-1383	Sergeant DPS	FT	P	AA	Soldotna	100	79O	12.0		141,176	5,927	9,116	74,707	230,926	230,926
12-1384	Sergeant DPS	FT	P	AA	Saint Marys	150	79N	12.0		171,373	7,752	25,207	89,264	293,596	293,596
12-1386	Sergeant DPS	FT	P	AA	Fairbanks	103	79L	12.0		125,528	5,379	4,800	67,664	203,371	203,371
12-1388	Sergeant DPS	FT	P	AA	Delta Junction	115	79N / O	12.0		157,750	7,549	33,686	87,647	286,632	286,632
12-1389	Sergeant DPS	FT	P	AA	Soldotna	99	79L / M	12.0		130,510	6,247	27,913	77,264	241,934	241,934
12-1391	State Trooper	FT	P	AA	Tok	115	77C	12.0		96,990	4,842	20,313	62,769	184,914	184,914
12-1392	State Trooper	FT	P	AA	Unalakleet	150	77N / O	12.0		150,187	6,996	27,224	83,236	267,643	267,643
12-1394	State Trooper	FT	P	AA	Fairbanks	103	77C / D	12.0		87,401	4,321	17,290	58,029	167,041	167,041
12-1395	State Trooper	FT	P	AA	Palmer	99	77E / F	12.0		93,735	4,677	19,586	61,272	179,270	179,270
12-1402	Office Assistant III	FT	A	GP	Palmer	100	11J	12.0		47,385	652	0	36,598	84,635	84,635
12-1403	Emergency Dispatch Supervisor	FT	A	SS	Anchorage	100	18C / D	12.0		69,404	0	7,487	47,726	124,617	124,617
12-1404	Er Svc Disp I	FT	A	GP	Soldotna	100	15D / E	12.0		55,656	842	5,525	41,782	103,805	103,805
12-1408	Sergeant DPS	FT	P	AA	Wasilla	99	79E / F	12.0		109,096	5,540	25,128	69,128	208,892	208,892
12-1409	State Trooper	FT	P	AA	Fairbanks	103	77C	12.0		86,861	3,959	9,058	54,733	154,611	154,611
12-1411	State Trooper	FT	P	AA	Cantwell	99	77L / M	12.0		129,543	6,130	25,892	76,324	237,889	237,889

Note: If a position is split, an asterisk (*) will appear in the Split/Count column. If the split position is also counted in the component, two asterisks (**) will appear in this column.
[No valid job title] appearing in the Job Class Title indicates that the PCN has an invalid class code or invalid range for the class code effective date of this scenario.

Personal Services Expenditure Detail
Department of Public Safety

Scenario: FY2022 Governor (17280)
Component: Alaska State Trooper Detachments (2325)
RDU: Alaska State Troopers (160)

PCN	Job Class Title	Time Status	Retire Code	Barg Unit	Location	Salary Sched	Range / Step	Comp Months	Split / Count	Annual Salaries	COLA	Premium Pay	Annual Benefits	Total Costs	UGF Amount
12-1412	State Trooper	FT	P	AA	Fairbanks	99	77F / J	12.0		103,171	5,253	24,110	66,518	199,052	199,052
12-1415	Sergeant DPS	FT	P	AA	Bethel	99	79M / N	12.0		203,169	9,155	28,993	100,455	341,772	341,772
12-1416	Sergeant DPS	FT	P	AA	Bethel	150	79L / M	12.0		165,110	7,973	37,075	91,027	301,185	301,185
12-1417	State Trooper	FT	P	AA	Fairbanks	99	77N / O	12.0		120,994	5,676	19,776	71,588	218,034	218,034
12-1418	State Trooper	FT	P	AA	Fairbanks	99	77M / N	12.0		116,626	5,705	21,603	70,633	214,567	214,567
12-1419	Er Svc Disp I	FT	A	GP	Soldotna	100	15E / F	12.0		57,659	867	5,351	42,469	106,346	106,346
12-1420	Er Svc Disp I	FT	A	GP	Fairbanks	103	15A / B	12.0		51,460	787	5,734	40,284	98,265	98,265
12-1421	Office Assistant II	FT	A	GP	Wasilla	100	10A / B	12.0		36,017	496	0	32,326	68,839	68,839
12-1423	Office Assistant II	FT	A	GP	Anchorage	100	10B / C	12.0		36,995	509	0	32,693	70,197	70,197
12-1427	Er Svc Disp I	FT	A	GP	Ketchikan	100	15A / B	12.0		49,530	758	5,566	39,495	95,349	95,349
12-1428	Er Svc Disp I	FT	A	GP	Fairbanks	103	15F / G	12.0		60,026	951	9,091	44,765	114,833	114,833
12-1430	State Trooper	FT	P	AA	Fairbanks	103	77J	12.0		108,326	4,891	10,177	63,220	186,614	186,614
12-1431	State Trooper	FT	P	AA	Bethel	99	77O	12.0		182,811	8,330	28,415	93,870	313,426	313,426
12-1432	State Trooper	FT	P	AA	Nenana	1DD	77F / J	12.0		98,897	5,108	24,854	65,192	194,051	194,051
12-1437	State Trooper	FT	P	AA	Bethel	150	77E / F	12.0		140,847	6,442	22,501	78,813	248,603	248,603
12-1442	Er Svc Disp I	FT	A	GP	Fairbanks	103	15A / B	12.0		51,702	764	3,855	39,669	95,990	95,990
12-1443	Criminal Justice Technician I	FT	A	GP	Palmer	100	12O / P	12.0		60,486	832	0	41,521	102,839	102,839
12-1444	Criminal Justice Technician I	FT	A	GP	Soldotna	100	12F / J	12.0		50,318	692	0	37,700	88,710	88,710
12-1455	State Trooper	FT	P	AA	Fairbanks	103	77B / C	12.0		86,625	4,391	19,758	58,665	169,439	169,439
12-1456	Sergeant DPS	FT	P	AA	Fairbanks	103	79J	12.0		116,626	5,669	24,436	71,697	218,428	218,428
12-1457	Sergeant DPS	FT	P	AA	Fairbanks	103	79F	12.0		112,403	5,508	21,036	68,833	207,780	207,780
12-1458	Er Svc Disp I	FT	A	GP	Fairbanks	103	15A / B	12.0		51,460	774	4,794	39,931	96,959	96,959
12-1459	Er Svc Disp I	FT	A	GP	Fairbanks	103	15A / B	12.0		51,929	783	4,967	40,172	97,851	97,851
12-1461	Criminal Justice Technician II	FT	A	GP	Anchorage	100	14K / L	12.0		60,746	836	0	41,619	103,201	103,201
12-1462	Criminal Justice Technician I	FT	A	GP	Palmer	100	12N / O	12.0		59,687	821	0	41,221	101,729	101,729
12-1469	Accounting Technician I	FT	A	GP	Anchorage	100	12J	12.0		50,720	698	0	37,851	89,269	89,269
12-1470	Er Svc Disp I	FT	A	GP	Fairbanks	103	15A / B	12.0		51,022	768	4,794	39,766	96,350	96,350
12-1471	Office Assistant II	FT	A	GP	Palmer	100	10C / D	12.0		38,049	523	0	33,089	71,661	71,661
12-1473	Office Assistant II	FT	A	GP	Soldotna	100	10O / P	12.0		52,681	725	0	38,588	91,994	91,994
12-1476	State Trooper	FT	P	AA	Anchor Point	100	77J / K	12.0		98,897	4,980	21,758	64,028	189,663	189,663
12-1477	State Trooper	FT	P	AA	Fairbanks	103	77C / D	12.0		89,854	4,549	20,366	60,107	174,876	174,876
12-1478	State Trooper	FT	P	AA	Fairbanks	103	77K / L	12.0		111,554	5,428	19,961	68,110	205,053	205,053
12-1479	State Trooper	FT	P	AA	Fairbanks	103	77C	12.0		86,861	4,584	24,199	60,423	176,067	176,067
12-1480	State Trooper	FT	P	AA	Dillingham	137	77C	12.0		115,502	5,602	20,216	69,689	211,009	211,009
12-1482	State Trooper	FT	P	AA	Fairbanks	103	77C	12.0		86,861	4,413	20,055	58,865	170,194	170,194

Note: If a position is split, an asterisk (*) will appear in the Split/Count column. If the split position is also counted in the component, two asterisks (**) will appear in this column. [No valid job title] appearing in the Job Class Title indicates that the PCN has an invalid class code or invalid range for the class code effective date of this scenario.

Personal Services Expenditure Detail
Department of Public Safety

Scenario: FY2022 Governor (17280)
Component: Alaska State Trooper Detachments (2325)
RDU: Alaska State Troopers (160)

PCN	Job Class Title	Time Status	Retire Code	Barg Unit	Location	Salary Sched	Range / Step	Comp Months	Split / Count	Annual Salaries	COLA	Premium Pay	Annual Benefits	Total Costs	UGF Amount
12-1483	State Trooper	FT	P	AA	Fairbanks	103	77F / J	12.0		98,680	4,858	19,013	62,915	185,466	185,466
12-1484	State Trooper	FT	P	AA	Nome	137	77E / F	12.0		128,632	5,879	20,461	74,330	229,302	229,302
12-1485	State Trooper	FT	P	AA	Palmer	100	77N	12.0		126,405	5,705	13,018	71,081	216,209	216,209
12-1486	State Trooper	FT	P	AA	Wasilla	100	77C / D	12.0		85,383	4,255	17,719	57,432	164,789	164,789
12-1487	Office Assistant II	FT	A	GP	Fairbanks	103	10F / G	12.0		43,568	599	0	35,163	79,330	79,330
12-1488	Er Svc Disp I	FT	A	GP	Ketchikan	100	15B / C	12.0		51,919	807	6,712	40,824	100,262	100,262
12-1489	Office Assistant III	FT	A	GP	Ketchikan	99	11N / O	12.0		55,851	768	0	39,779	96,398	96,398
12-1495	Sergeant DPS	FT	P	AA	Seward	100	79J	12.0		113,194	5,616	22,866	69,818	211,494	211,494
12-1499	State Trooper	FT	P	AA	Anchorage	100	77J	12.0		97,677	4,709	16,422	61,565	180,373	180,373
12-1507	Er Svc Disp I	FT	A	GP	Fairbanks	103	15B / C	12.0		53,241	787	3,994	40,299	98,321	98,321
12-1508	Er Svc Disp I	FT	A	GP	Fairbanks	103	15D / E	12.0		57,473	879	6,387	42,789	107,528	107,528
12-1509	Office Assistant II	FT	A	GP	Fairbanks	99	10O / P	12.0		54,609	751	0	39,312	94,672	94,672
12-1511	Office Assistant II	FT	A	GP	Fairbanks	103	10J	12.0		45,747	629	0	35,982	82,358	82,358
12-1512	Criminal Justice Technician I	FT	A	GP	Nome	137	12E / F	12.0		63,365	872	0	42,603	106,840	106,840
12-1514	Administrative Assistant II	FT	A	SS	Palmer	500	14B / C	12.0		50,178	0	0	37,687	87,865	87,865
12-1520	State Trooper	FT	P	AA	Fairbanks	103	77C	12.0		86,861	4,354	18,623	58,327	168,165	168,165
12-1527	Criminal Justice Technician I	FT	A	GP	Palmer	100	12J / K	12.0		50,761	698	0	37,866	89,325	89,325
12-1531	Sergeant DPS	FT	P	AA	Juneau	105	79L	12.0		132,762	6,097	21,853	76,066	236,778	236,778
12-1548	Sergeant DPS	FT	P	AA	Kodiak	111	79K / L	12.0		139,679	6,353	21,433	78,110	245,575	245,575
12-1550	State Trooper	FT	P	AA	Wasilla	100	77O	12.0		117,437	5,650	24,507	72,029	219,623	219,623
12-1552	State Trooper Recruit	FT	P	AA	Fairbanks	103	75C	12.0		74,984	3,758	16,061	52,901	147,704	147,704
12-1554	State Trooper	FT	P	AA	Saint Marys	150	77C	12.0		126,506	5,863	22,163	74,196	228,728	228,728
12-1556	Administrative Assistant I	FT	A	GP	Bethel	150	12N / O	12.0		88,268	1,214	0	51,961	141,443	141,443
12-1557	Office Assistant II	FT	A	GP	Nome	99	10Q / R	12.0		80,494	1,107	0	49,040	130,641	130,641
12-1558	State Trooper Recruit	FT	P	AA	Soldotna	100	75C / D	12.0		75,483	3,762	15,668	52,941	147,854	147,854
12-1559	State Trooper	FT	P	AA	Bethel	150	77E / F	12.0		140,847	6,551	25,284	79,688	252,370	252,370
12-1560	State Trooper	FT	P	AA	Palmer	99	77M / N	12.0		125,795	5,685	11,941	70,447	213,868	213,868
12-1561	State Trooper	FT	P	AA	Craig	1EE	77C / D	12.0		91,826	4,390	14,544	58,660	169,420	169,420
12-1563	Administrative Assistant II	FT	A	GP	Anchorage	100	14G / J	12.0		57,311	788	0	40,328	98,427	98,427
12-1566	State Trooper	FT	P	AA	King Salmon	150	77C	12.0		126,506	5,772	19,852	73,470	225,600	225,600
12-1583	Sergeant DPS	FT	P	AA	Glennallen	99	79D / E	12.0		117,067	5,682	23,412	71,478	217,639	217,639
12-1588	State Trooper	FT	P	AA	Craig	1EE	77C	12.0		90,667	4,342	14,544	58,225	167,778	167,778
12-1590	State Trooper	FT	P	AA	Galena	137	77N	12.0		160,909	7,518	29,739	87,399	285,565	285,565
12-1593	State Trooper	FT	P	AA	Palmer	100	77M / N	12.0		122,693	5,658	20,791	72,566	221,708	221,708
12-1596	State Trooper	FT	P	AA	Fairbanks	99	77D / E	12.0		91,278	4,418	15,763	58,912	170,371	170,371
12-1601	State Trooper	FT	P	AA	Kodiak	111	77F / J	12.0		105,844	5,366	24,159	67,541	202,910	202,910
12-1604	Office Assistant III	FT	A	GP	Dillingham	137	11C / D	12.0		56,131	772	0	39,884	96,787	96,787

Note: If a position is split, an asterisk (*) will appear in the Split/Count column. If the split position is also counted in the component, two asterisks (**) will appear in this column. [No valid job title] appearing in the Job Class Title indicates that the PCN has an invalid class code or invalid range for the class code effective date of this scenario.

Personal Services Expenditure Detail
Department of Public Safety

Scenario: FY2022 Governor (17280)
Component: Alaska State Trooper Detachments (2325)
RDU: Alaska State Troopers (160)

PCN	Job Class Title	Time Status	Retire Code	Barg Unit	Location	Salary Sched	Range / Step	Comp Months	Split / Count	Annual Salaries	COLA	Premium Pay	Annual Benefits	Total Costs	UGF Amount
12-1605	Administrative Assistant I	FT	A	GP	Anchorage	100	12B / C	12.0		42,403	583	0	34,725	77,711	77,711
12-1606	Office Assistant III	FT	A	GP	Kotzebue	160	11C	12.0		64,077	882	0	42,870	107,829	107,829
12-1608	Lieutenant DPS	FT	P	SS	Anchorage	99	24M / N	12.0		150,671	0	4,800	76,480	231,951	231,951
12-1610	State Trooper	FT	P	AA	Fairbanks	103	77F / J	12.0		98,225	4,729	16,343	61,741	181,038	181,038
12-1611	State Trooper	FT	P	AA	Soldotna	99	77F / J	12.0		105,894	5,355	23,854	67,446	202,549	202,549
12-1612	Sergeant DPS	FT	P	AA	Fairbanks	103	79O	12.0		140,171	6,006	12,124	75,337	233,638	233,638
12-1619	Office Assistant II	FT	A	GP	Palmer	100	10G / J	12.0		43,748	602	0	35,231	79,581	79,581
12-1621	Office Assistant III	FT	A	GP	Fairbanks	103	11B / C	12.0		40,628	559	0	34,058	75,245	75,245
12-1622	Criminal Justice Technician I	FT	A	GP	Soldotna	100	12J	12.0		50,720	698	0	37,851	89,269	89,269
12-1623	Office Assistant III	FT	A	GP	Kenai	100	11K / L	12.0		50,125	690	0	37,627	88,442	88,442
12-1624	Er Svc Disp I	FT	A	GP	Fairbanks	103	15A / B	12.0		51,022	755	3,855	39,413	95,045	95,045
12-1630	Er Svc Disp II	FT	A	GP	Soldotna	100	16J / K	12.0		68,868	1,019	5,164	46,612	121,663	121,663
12-1631	Office Assistant III	FT	A	GP	Tok	100	11C / D	12.0		40,360	560	308	34,073	75,301	75,301
12-1632	Er Svc Disp I	FT	A	GP	Fairbanks	103	15D / E	12.0		56,053	859	6,387	42,255	105,554	105,554
12-1633	Er Svc Disp I	FT	A	GP	Fairbanks	103	15D / E	12.0		56,053	830	4,294	41,469	102,646	102,646
12-1635	Office Assistant II	FT	A	GP	Anchorage	100	10B / C	12.0		36,844	507	0	32,636	69,987	69,987
12-1637	Administrative Assistant III	FT	A	SS	Anchorage	500	15F / J	12.0		61,859	0	0	42,077	103,936	103,936
12-1647	Lieutenant DPS	FT	P	SS	Ketchikan	100	24N / O	12.0		157,658	0	4,800	78,677	241,135	241,135
12-1649	State Trooper	FT	P	AA	Wasilla	100	77D / E	12.0		89,244	4,468	19,008	59,367	172,087	172,087
12-1651	State Trooper	FT	P	AA	Palmer	100	77D / E	12.0		92,409	4,557	17,994	60,176	175,136	175,136
12-1652	State Trooper	FT	P	AA	Fairbanks	103	77D / E	12.0		91,278	4,664	21,725	61,153	178,820	178,820
12-1653	State Trooper	FT	P	AA	Fairbanks	103	77J	12.0		100,651	4,890	17,816	63,206	186,563	186,563
12-1654	State Trooper	FT	P	AA	Fairbanks	103	77C / D	12.0		87,977	4,327	16,867	58,087	167,258	167,258
12-1655	State Trooper Recruit	FT	P	AA	Palmer	99	75N / O	12.0		98,958	4,820	17,817	62,570	184,165	184,165
12-1656	State Trooper	FT	P	AA	Fairbanks	99	77M / N	12.0		113,621	5,704	25,866	71,106	216,297	216,297
12-1657	State Trooper	FT	P	AA	Seward	100	77C	12.0		84,302	4,222	17,992	57,128	163,644	163,644
12-1658	Sergeant DPS	FT	P	AA	Anchor Point	100	79N / O	12.0		140,545	6,396	21,651	78,451	247,043	247,043
12-1659	State Trooper	FT	P	AA	Palmer	99	77N / O	12.0		120,391	5,678	20,291	71,555	217,915	217,915
12-1660	Sergeant DPS	FT	P	AA	Soldotna	99	79M / N	12.0		140,125	6,407	22,352	78,539	247,423	247,423
12-1661	State Trooper	FT	P	AA	Tok	115	77C	12.0		96,990	4,875	21,132	63,077	186,074	186,074
12-1663	Sergeant DPS	FT	P	AA	Kotzebue	99	79O	12.0		225,950	10,659	44,334	112,444	393,387	393,387
12-1667	Procurement Specialist I	FT	A	GP	Anchorage	100	14L	12.0		62,127	881	1,911	42,856	107,775	107,775
12-1675	Information Officer III	FT	A	SS	Anchorage	99	20Q / R	12.0		109,328	0	0	59,916	169,244	169,244
12-1677	Court Services Officer	FT	P	A2	Palmer	500	74M / N	12.0		82,044	2,480	8,094	52,560	145,178	145,178
12-1678	Court Services Officer	FT	P	A2	Kenai	500	74J / K	12.0		75,269	2,279	7,546	49,808	134,902	134,902
12-1679	Court Services Officer	FT	P	A2	Kenai	500	74L / M	12.0		79,334	2,495	11,330	52,758	145,917	145,917
12-1680	State Trooper	FT	P	AA	Wasilla	100	77D	12.0		90,965	4,565	19,629	60,248	175,407	175,407
12-1681	State Trooper	FT	P	AA	Wasilla	100	77L / M	12.0		113,541	5,475	19,101	68,533	206,650	206,650

Note: If a position is split, an asterisk (*) will appear in the Split/Count column. If the split position is also counted in the component, two asterisks (**) will appear in this column. [No valid job title] appearing in the Job Class Title indicates that the PCN has an invalid class code or invalid range for the class code effective date of this scenario.

Personal Services Expenditure Detail
Department of Public Safety

Scenario: FY2022 Governor (17280)
Component: Alaska State Trooper Detachments (2325)
RDU: Alaska State Troopers (160)

PCN	Job Class Title	Time Status	Retire Code	Barg Unit	Location	Salary Sched	Range / Step	Comp Months	Split / Count	Annual Salaries	COLA	Premium Pay	Annual Benefits	Total Costs	UGF Amount
12-1682	State Trooper	FT	P	AA	Wasilla	100	77B / C	12.0		90,751	4,606	20,850	60,626	176,833	176,833
12-1685	Court Services Officer	FT	P	A2	Palmer	500	74O	12.0		87,630	2,890	17,395	58,155	166,070	166,070
12-1693	Court Services Officer	FT	P	A2	Palmer	500	74Q / R	12.0		97,864	2,956	9,577	59,063	169,460	169,460
12-1696	State Trooper	FT	P	AA	Wasilla	100	77F	12.0		94,162	4,618	17,736	60,738	177,254	177,254
12-1698	Court Services Officer	FT	P	A2	Fairbanks	503	74F	12.0		72,342	2,408	15,168	51,573	141,491	141,491
12-1699	Court Services Officer	FT	P	A2	Fairbanks	503	74L / M	12.0		81,167	2,496	9,538	52,773	145,974	145,974
12-1700	Court Services Officer	FT	P	A2	Fairbanks	503	74M / N	12.0		85,133	2,599	9,312	54,179	151,223	151,223
12-1701	Court Services Officer	FT	P	A2	Fairbanks	503	74L	12.0		80,787	2,458	8,538	52,255	144,038	144,038
12-1702	Court Services Officer	FT	P	A2	Fairbanks	503	74C / D	12.0		67,004	2,025	6,596	46,345	121,970	121,970
12-1703	Court Services Officer	FT	P	A2	Fairbanks	503	74M / N	12.0		85,264	2,589	8,812	54,040	150,705	150,705
12-1704	Court Services Officer	FT	P	A2	Juneau	505	74N / O	12.0		91,839	2,768	8,747	56,486	159,840	159,840
12-1705	State Trooper	FT	P	AA	Juneau	105	77E / F	12.0		98,587	4,568	12,098	60,282	175,535	175,535
12-1706	Court Services Officer	FT	P	A2	Ketchikan	5EE	74M	12.0		87,464	2,644	8,640	54,802	153,550	153,550
12-1708	State Trooper	FT	P	AA	Emmonak	99	77O	12.0		185,007	8,377	27,407	94,244	315,035	315,035
12-1709	State Trooper	FT	P	AA	Kotzebue	99	77N / O	12.0		188,366	8,595	29,597	95,989	322,547	322,547
12-1714	Court Services Officer	FT	P	A2	Anchorage	500	74N / O	12.0		87,498	2,762	12,868	56,404	159,532	159,532
12-1715	State Trooper	FT	P	AA	Palmer	100	77C / D	12.0		89,635	4,666	23,425	61,174	178,900	178,900
12-1716	Office Assistant II	FT	A	GP	Palmer	100	10N	12.0		50,697	697	0	37,842	89,236	89,236
12-1763	Office Assistant II	FT	A	GP	Anchorage	100	10B / C	12.0		36,995	548	2,814	33,751	74,108	74,108
12-1771	Office Assistant III	FT	A	GP	Glennallen	100	11L	12.0		50,525	695	0	37,778	88,998	88,998
12-1773	Administrative Assistant I	FT	A	GP	Anchorage	100	12C / D	12.0		43,188	617	1,639	35,636	81,080	81,080
12-1775	Emergency Dispatch Supervisor	FT	A	SS	Fairbanks	99	18Q	12.0		103,147	0	0	57,593	160,740	160,740
12-1779	Court Services Officer	FT	P	A2	Nome	537	74L / M	12.0		107,642	3,249	10,444	63,063	184,398	184,398
12-1780	Major DPS	FT	P	SS	Anchorage	99	26Q	12.0		187,179	0	756	86,689	274,624	274,624
12-1823	State Trooper	FT	P	AA	Soldotna	100	77K	12.0		106,404	5,499	26,836	68,758	207,497	207,497
12-1824	State Trooper	FT	P	AA	Soldotna	100	77N	12.0		118,853	5,770	27,453	73,453	225,529	225,529
12-1829	Office Assistant II	FT	A	GP	Anchorage	100	10C / D	12.0		38,136	525	0	33,122	71,783	71,783
12-1841	State Trooper	FT	P	AA	Wasilla	100	77O	12.0		121,846	6,063	31,913	75,797	235,619	235,619
12-1842	State Trooper	FT	P	AA	Juneau	99	77N	12.0		122,788	5,703	15,377	70,609	214,477	214,477
12-1843	State Trooper	FT	P	AA	Soldotna	100	77C / D	12.0		85,383	4,302	18,858	57,860	166,403	166,403
12-1844	State Trooper	FT	P	AA	Dillingham	137	77E / F	12.0		125,902	5,871	22,981	74,264	229,018	229,018
12-1845	State Trooper	FT	P	AA	Delta Junction	115	77F	12.0		108,306	5,372	21,842	67,596	203,116	203,116
12-1874	State Trooper	FT	P	AA	Soldotna	99	77J / K	12.0		106,283	4,818	10,444	62,552	184,097	184,097
12-1877	State Trooper	FT	P	AA	Wasilla	100	77C	12.0		84,302	4,246	18,569	57,345	164,462	164,462
12-1879	State Trooper	FT	P	AA	Emmonak	99	77O / P	12.0		193,771	9,287	41,733	101,506	346,297	346,297
12-1883	State Trooper	FT	P	AA	Unalakleet	99	77F / J	12.0		124,909	5,823	22,746	73,877	227,355	227,355
12-1884	State Trooper	FT	P	AA	Emmonak	150	77N	12.0		182,760	8,373	29,563	94,216	314,912	314,912

Note: If a position is split, an asterisk (*) will appear in the Split/Count column. If the split position is also counted in the component, two asterisks (**) will appear in this column. [No valid job title] appearing in the Job Class Title indicates that the PCN has an invalid class code or invalid range for the class code effective date of this scenario.

Personal Services Expenditure Detail
Department of Public Safety

Scenario: FY2022 Governor (17280)
Component: Alaska State Trooper Detachments (2325)
RDU: Alaska State Troopers (160)

PCN	Job Class Title	Time Status	Retire Code	Barg Unit	Location	Salary Sched	Range / Step	Comp Months	Split / Count	Annual Salaries	COLA	Premium Pay	Annual Benefits	Total Costs	UGF Amount
12-1886	State Trooper	FT	P	AA	Aniak	150	77M	12.0		143,183	6,519	22,138	79,433	251,273	251,273
12-1888	State Trooper	FT	P	AA	Soldotna	100	77N	12.0		118,853	5,652	22,997	71,994	219,496	219,496
12-1889	Criminal Justice Technician I	FT	A	GP	Anchorage	99	12Q / R	12.0		65,501	901	0	43,406	109,808	109,808
12-1891	Analyst/Programmer III	FT	A	GP	Anchorage	100	18B / C	12.0		64,311	885	0	42,958	108,154	108,154
12-1894	Administrative Officer II	FT	A	GP	Anchorage	100	19D / E	12.0		72,969	1,004	0	46,212	120,185	120,185
12-1895	Office Assistant IV	FT	A	SS	Fairbanks	503	12C / D	12.0		47,489	0	0	36,677	84,166	84,166
12-1900	Sergeant DPS	FT	P	AA	Palmer	100	79F / J	12.0		112,340	5,371	17,781	67,586	203,078	203,078
12-1903	Sergeant DPS	FT	P	AA	Craig	1EE	79J	12.0		125,362	5,840	22,728	74,014	227,944	227,944
12-1904	State Trooper	FT	P	AA	Dillingham	137	77D / E	12.0		123,968	5,753	21,926	73,324	224,971	224,971
12-1905	State Trooper	FT	P	AA	Nome	137	77O	12.0		160,888	7,298	24,175	85,642	278,003	278,003
12-1906	State Trooper	FT	P	AA	Kotzebue	160	77N	12.0		181,168	8,325	29,934	93,832	313,259	313,259
12-1907	State Trooper	FT	P	AA	Bethel	99	77O	12.0		152,295	6,919	23,166	82,622	265,002	265,002
12-1908	State Trooper	FT	P	AA	Bethel	150	77C / D	12.0		109,006	5,277	18,850	66,735	199,868	199,868
12-1909	State Trooper	FT	P	AA	Saint Marys	99	77F / J	12.0		124,909	5,695	19,515	72,861	222,980	222,980
12-1910	Court Services Officer	FT	P	A2	Bethel	550	74C	12.0		94,349	2,851	9,261	57,623	164,084	164,084
12-1911	State Trooper	FT	P	AA	Togiak	99	77O	12.0		159,912	7,246	23,842	85,231	276,231	276,231
12-1912	State Trooper	FT	P	AA	Soldotna	99	77L / M	12.0		114,420	5,163	10,677	65,698	195,958	195,958
12-1913	State Trooper	FT	P	AA	Soldotna	100	77K / L	12.0		116,073	4,937	3,532	63,634	188,176	188,176
12-1914	State Trooper	FT	P	AA	Palmer	99	77N / O	12.0		130,510	5,648	11,538	72,068	219,764	219,764
12-1915	Court Services Officer	FT	P	A2	Anchor Point	500	74F / J	12.0		71,473	2,162	7,089	48,210	128,934	128,934
12-1916	Court Services Officer	FT	P	A2	Kenai	500	74L / M	12.0		78,601	2,378	7,830	51,167	139,976	139,976
12-1917	State Trooper	FT	P	AA	Wasilla	99	77N / O	12.0		125,290	5,675	18,616	72,698	222,279	222,279
12-1919	Captain DPS	FT	P	SS	Anchorage	99	25O / P	12.0		169,666	0	4,800	82,453	256,919	256,919
12-1922	Visual Information Specialist	FT	A	GP	Anchorage	100	17M / N	12.0		81,422	1,204	6,073	51,671	140,370	140,370
12-1923	State Trooper	FT	P	AA	Togiak	150	77P	12.0		165,940	7,398	21,671	86,444	281,453	281,453
12-1925	State Trooper Recruit	FT	P	AA	Wasilla	100	75C / D	12.0		75,370	3,888	18,825	54,085	152,168	152,168
12-1926	Sergeant DPS	FT	P	AA	Fairbanks	103	79N / O	12.0		138,486	6,618	29,342	80,222	254,668	254,668
12-1927	State Trooper	FT	P	AA	Anchor Point	100	77J	12.0		97,677	4,860	20,084	62,941	185,562	185,562
12-1928	State Trooper	FT	P	AA	Delta Junction	99	77M / N	12.0		133,430	6,085	20,862	75,965	236,342	236,342
12-1929	State Trooper Recruit	FT	P	AA	Soldotna	100	75C / D	12.0		75,302	3,735	15,189	52,693	146,919	146,919
12-1932	Court Services Officer	FT	P	A2	Fairbanks	503	74F / J	12.0		73,319	2,245	8,277	49,350	133,191	133,191
12-1933	Court Services Officer	FT	P	A2	Palmer	500	74N	12.0		84,448	2,554	8,368	53,567	148,937	148,937
12-1944	Court Services Officer	FT	P	A2	Palmer	500	74N	12.0		84,448	2,581	9,368	53,942	150,339	150,339
12-1945	Court Services Officer	FT	P	A2	Kenai	500	74O	12.0		87,630	2,677	9,655	55,246	155,208	155,208
12-1946	Court Services Officer	FT	P	A2	Fairbanks	503	74D / E	12.0		68,135	2,091	7,864	47,247	125,337	125,337
12-1947	Court Services Officer	FT	P	A2	Juneau	505	74N	12.0		88,650	2,680	8,747	55,288	155,365	155,365
12-1948	Court Services Officer	FT	P	A2	Fairbanks	503	74M / N	12.0		86,310	2,631	9,312	54,621	152,874	152,874

Note: If a position is split, an asterisk (*) will appear in the Split/Count column. If the split position is also counted in the component, two asterisks (**) will appear in this column. [No valid job title] appearing in the Job Class Title indicates that the PCN has an invalid class code or invalid range for the class code effective date of this scenario.

Personal Services Expenditure Detail
Department of Public Safety

Scenario: FY2022 Governor (17280)
Component: Alaska State Trooper Detachments (2325)
RDU: Alaska State Troopers (160)

PCN	Job Class Title	Time Status	Retire Code	Barg Unit	Location	Salary Sched	Range / Step	Comp Months	Split / Count	Annual Salaries	COLA	Premium Pay	Annual Benefits	Total Costs	UGF Amount
12-1949	Court Services Officer	FT	P	A2	Palmer	500	74M	12.0		81,411	2,463	8,094	52,322	144,290	144,290
12-1951	Office Assistant II	FT	A	GP	Palmer	100	10B / C	12.0		36,935	508	0	32,671	70,114	70,114
12-1965	Court Services Officer	FT	P	A2	Bethel	550	74J	12.0		109,304	3,028	756	60,047	173,135	173,135
12-1971	Court Services Officer	FT	P	A2	Bethel	550	74M	12.0		122,075	3,696	12,260	69,169	207,200	207,200
12-1972	Program Coordinator II	FT	A	GP	Anchorage	100	20G / J	12.0		85,966	1,183	0	51,096	138,245	138,245
12-1977	Office Assistant IV	FT	A	GP	Soldotna	100	12B / C	12.0		41,954	577	0	34,557	77,088	77,088
12-1981	State Trooper	FT	P	AA	Fairbanks	99	77N / O	12.0		126,718	5,702	11,434	70,604	214,458	214,458
12-1983	State Trooper	FT	P	AA	Palmer	99	77K / L	12.0		105,144	5,002	16,052	64,232	190,430	190,430
12-1984	State Trooper	FT	P	AA	Palmer	99	77L / M	12.0		121,094	5,449	10,938	68,304	205,785	205,785
12-1997	Sergeant DPS	FT	P	AA	Bethel	150	79P	12.0		211,806	9,654	33,002	104,432	358,894	358,894
12-2000	Telecommunications Planner	FT	A	GP	Anchorage	100	21L	12.0		100,094	1,377	0	56,406	157,877	157,877
12-2002	State Trooper	FT	P	AA	Selawik	160	77D / E	12.0		143,075	6,799	29,347	81,667	260,888	260,888
12-2008	State Trooper	FT	P	AA	Selawik	160	77P / Q	12.0		217,904	10,146	39,391	108,359	375,800	375,800
12-2037	State Trooper	FT	P	AA	Bethel	99	77M / N	12.0		154,464	6,901	20,535	82,477	264,377	264,377
12-2044	State Trooper	FT	P	AA	Fairbanks	103	77C	12.0		86,861	4,210	15,135	57,016	163,222	163,222
12-2045	State Trooper	FT	P	AA	Fairbanks	103	77C / D	12.0		89,881	4,491	18,935	59,579	172,886	172,886
12-2046	State Trooper	FT	P	AA	Fairbanks	103	77C	12.0		86,861	4,291	17,109	57,758	166,019	166,019
12-2047	State Trooper	FT	P	AA	Fairbanks	103	77C / D	12.0		89,881	4,618	21,995	60,729	177,223	177,223
12-2048	State Trooper	FT	P	AA	Fairbanks	99	77K / L	12.0		107,809	5,456	24,376	68,361	206,002	206,002
12-2049	State Trooper	FT	P	AA	Soldotna	100	77J / K	12.0		99,507	4,823	17,337	62,596	184,263	184,263
12-2050	State Trooper	FT	P	AA	Soldotna	100	77E / F	12.0		91,944	4,533	17,884	59,960	174,321	174,321
12-2051	State Trooper	FT	P	AA	Soldotna	100	77J	12.0		106,404	5,219	20,042	66,205	197,870	197,870
12-2052	State Trooper	FT	P	AA	Palmer	100	77C / D	12.0		89,080	4,512	20,245	59,771	173,608	173,608
12-2053	State Trooper	FT	P	AA	Wasilla	99	77J	12.0		97,677	4,710	16,431	61,568	180,386	180,386
12-2054	State Trooper	FT	P	AA	Wasilla	100	77C	12.0		84,302	4,227	18,107	57,172	163,808	163,808
12-2055	State Trooper	FT	P	AA	Palmer	100	77C / D	12.0		87,201	4,472	21,153	59,406	172,232	172,232
12-2056	State Trooper	FT	P	AA	Palmer	100	77C / D	12.0		87,227	4,393	19,219	58,689	169,528	169,528
12-2057	State Trooper	FT	P	AA	Hooper Bay	160	77P / Q	12.0		192,057	8,660	27,547	96,505	324,769	324,769
12-2058	State Trooper	FT	P	AA	Hooper Bay	160	77Q	12.0		205,609	9,263	29,284	101,314	345,470	345,470
12-2061	State Trooper	FT	P	AA	Anchorage	99	77F / J	12.0		95,182	3,960	756	54,740	154,638	154,638
12-2063	State Trooper	FT	P	AA	Anchorage	100	77K	12.0		101,338	4,214	756	57,053	163,361	163,361
12-2064	State Trooper Recruit	FT	P	AA	Anchorage	100	75C / D	12.0		75,302	3,139	756	47,269	126,466	126,466
12-2087	Information Officer II	FT	A	GG	Anchorage	100	17B / C	12.0		59,153	814	0	41,020	100,987	100,987
12-2088	Court Services Officer	FT	A	A2	Juneau	505	74C	12.0		66,040	1,943	4,566	45,220	117,769	117,769
12-2089	Court Services Officer	FT	A	A2	Dillingham	537	74C	12.0		86,174	2,529	5,727	53,223	147,653	147,653
12-2090	Court Services Officer	FT	A	A2	Kodiak	511	74C	12.0		69,826	2,053	4,784	46,725	123,388	123,388
12-2091	State Trooper	FT	A	AA	Dillingham	137	77C	12.0		115,502	5,366	14,499	67,541	202,908	202,908
12-2095	Court Services Officer	FT	A	A2	Juneau	505	74C	12.0		66,040	1,943	4,566	45,220	117,769	117,769

Note: If a position is split, an asterisk (*) will appear in the Split/Count column. If the split position is also counted in the component, two asterisks (**) will appear in this column. [No valid job title] appearing in the Job Class Title indicates that the PCN has an invalid class code or invalid range for the class code effective date of this scenario.

Personal Services Expenditure Detail
Department of Public Safety

Scenario: FY2022 Governor (17280)
Component: Alaska State Trooper Detachments (2325)
RDU: Alaska State Troopers (160)

PCN	Job Class Title	Time Status	Retire Code	Barg Unit	Location	Salary Sched	Range / Step	Comp Months	Split / Count	Annual Salaries	COLA	Premium Pay	Annual Benefits	Total Costs	UGF Amount
12-2096	Court Services Officer	FT	A	A2	Kotzebue	560	74C	12.0		100,630	2,949	6,561	58,969	169,109	169,109
12-2097	State Trooper	FT	A	AA	Anchor Point	100	77C	12.0		84,302	3,925	10,787	54,421	153,435	153,435
12-2098	State Trooper	FT	A	AA	Anchor Point	100	77C	12.0		84,302	3,925	10,787	54,421	153,435	153,435
12-2099	State Trooper	FT	A	AA	Bethel	150	77C	12.0		126,506	5,642	15,808	72,168	220,124	220,124
12-2100	State Trooper	FT	A	AA	Emmonak	150	77C	12.0		126,506	5,642	15,808	72,168	220,124	220,124
12-3049	Mail Services Courier	FT	A	GG	Anchorage	100	9R / S	12.0		57,586	807	1,103	40,846	100,342	0
12-3053	Office Assistant III	FT	A	GP	Kodiak	111	11J / K	12.0		53,378	734	0	38,850	92,962	92,962
12-3085	Major DPS	FT	P	SS	Anchorage	100	26C	12.0		112,986	0	756	61,575	175,317	175,317
12-3107	Court Services Officer	FT	P	A2	Ketchikan	5EE	74N / O	12.0		94,019	2,833	8,936	57,377	163,165	163,165
12-3162	Administrative Assistant II	FT	A	GP	Anchorage	100	14B / C	12.0		47,834	658	0	36,766	85,258	85,258
12-3208	DPT Tech Ofc I	FT	A	SS	Anchorage	100	23B	12.0		92,251	0	0	53,498	145,749	145,749
12-3829	Court Services Officer	FT	P	A2	Palmer	500	74L / M	12.0		80,189	2,449	8,830	52,140	143,608	143,608
12-3854	Office Assistant III	FT	A	GP	Craig	100	11L / M	12.0		50,798	699	0	37,880	89,377	89,377
12-4204	Court Services Officer	FT	P	A2	Kenai	500	74J / K	12.0		73,358	2,220	7,327	49,008	131,913	131,913
12-4222	Forensic Technician II	FT	A	GP	Fairbanks	103	15L / M	12.0		69,259	1,011	4,219	46,403	120,892	120,892
12-4408	Court Services Officer	FT	P	A2	Fairbanks	503	74D / E	12.0		68,262	2,066	6,814	46,900	124,042	124,042
12-5310	Er Svc Disp I	FT	A	GP	Fairbanks	103	15E / F	12.0		57,808	856	4,432	42,180	105,276	105,276
12-6013	Sergeant DPS	FT	P	AA	Palmer	100	79J	12.0		113,194	5,090	10,120	65,028	193,432	193,432
12-N09007	State Trooper	NP	N	AA	Fairbanks	103	77A	12.0		80,704	2,768	756	10,810	95,038	95,038
12-N12006	State Trooper	NP	N	AA	Anchorage	100	77A	12.0		78,333	2,688	756	10,495	92,272	92,272
12-N17007	State Trooper	NP	N	AA	Anchorage	100	77A	12.0		78,333	2,688	756	10,495	92,272	92,272
12-N17008	State Trooper	NP	N	AA	Anchorage	100	77A	12.0		78,333	2,688	756	10,495	92,272	92,272
12-N18003	State Trooper	NP	N	AA	Fairbanks	103	77A	12.0		80,704	2,768	756	10,810	95,038	95,038
12-N18004	State Trooper	NP	N	AA	Fairbanks	103	77A	12.0		80,704	2,768	756	10,810	95,038	95,038
12-N19003	State Trooper	NP	N	AA	Fairbanks	103	77A	12.0		80,704	2,768	756	10,810	95,038	95,038
12-N20001	Public Safety Technician II	NP	N	GP	Anchorage	100	11A	12.0		37,791	437	0	24,678	62,906	62,906
12-N21002	State Trooper	NP	N	AA	Anchorage	100	77A	12.0		78,333	2,662	0	10,395	91,390	91,390

Note: If a position is split, an asterisk (*) will appear in the Split/Count column. If the split position is also counted in the component, two asterisks (**) will appear in this column. [No valid job title] appearing in the Job Class Title indicates that the PCN has an invalid class code or invalid range for the class code effective date of this scenario.

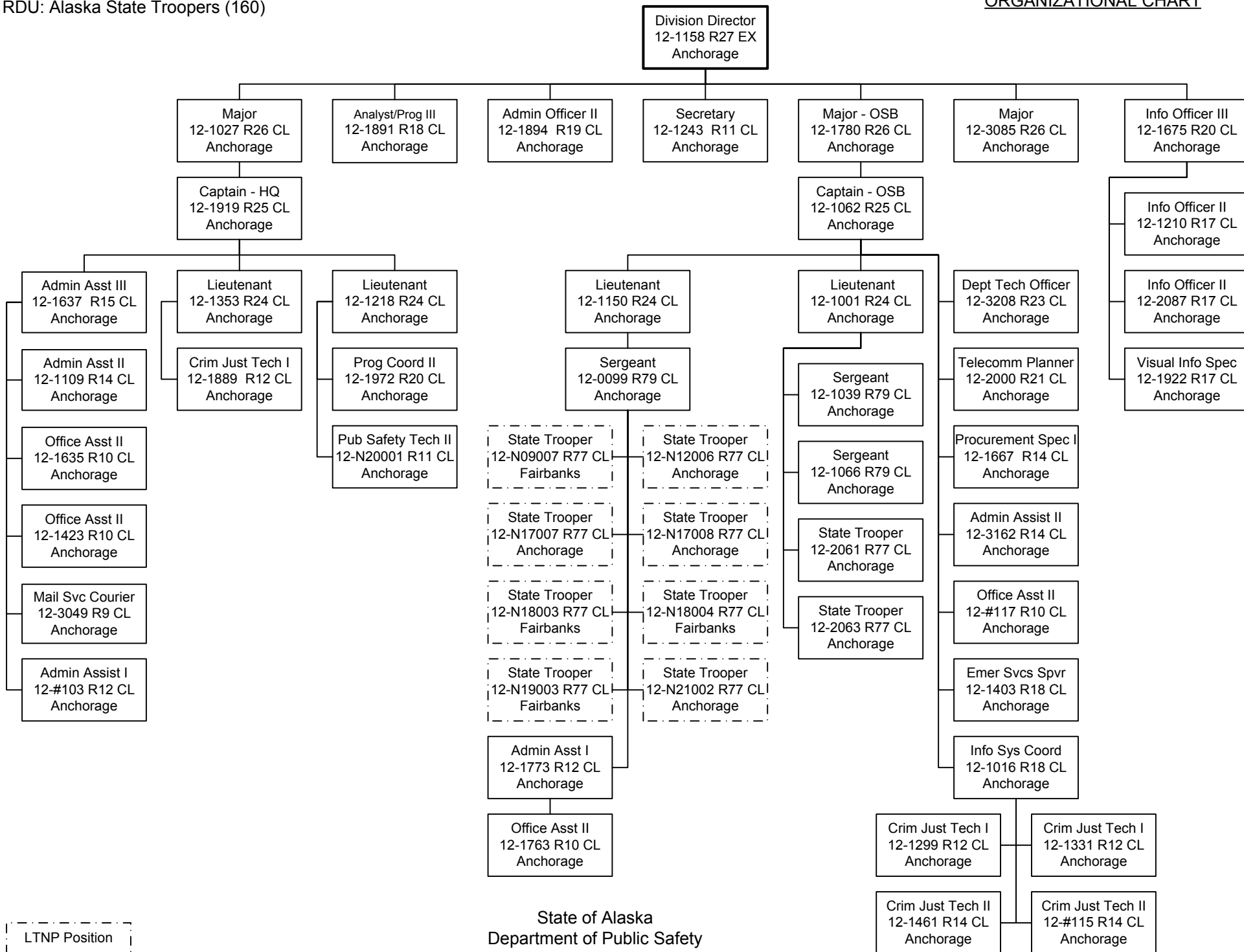
Personal Services Expenditure Detail
Department of Public Safety

Scenario: FY2022 Governor (17280)
Component: Alaska State Trooper Detachments (2325)
RDU: Alaska State Troopers (160)

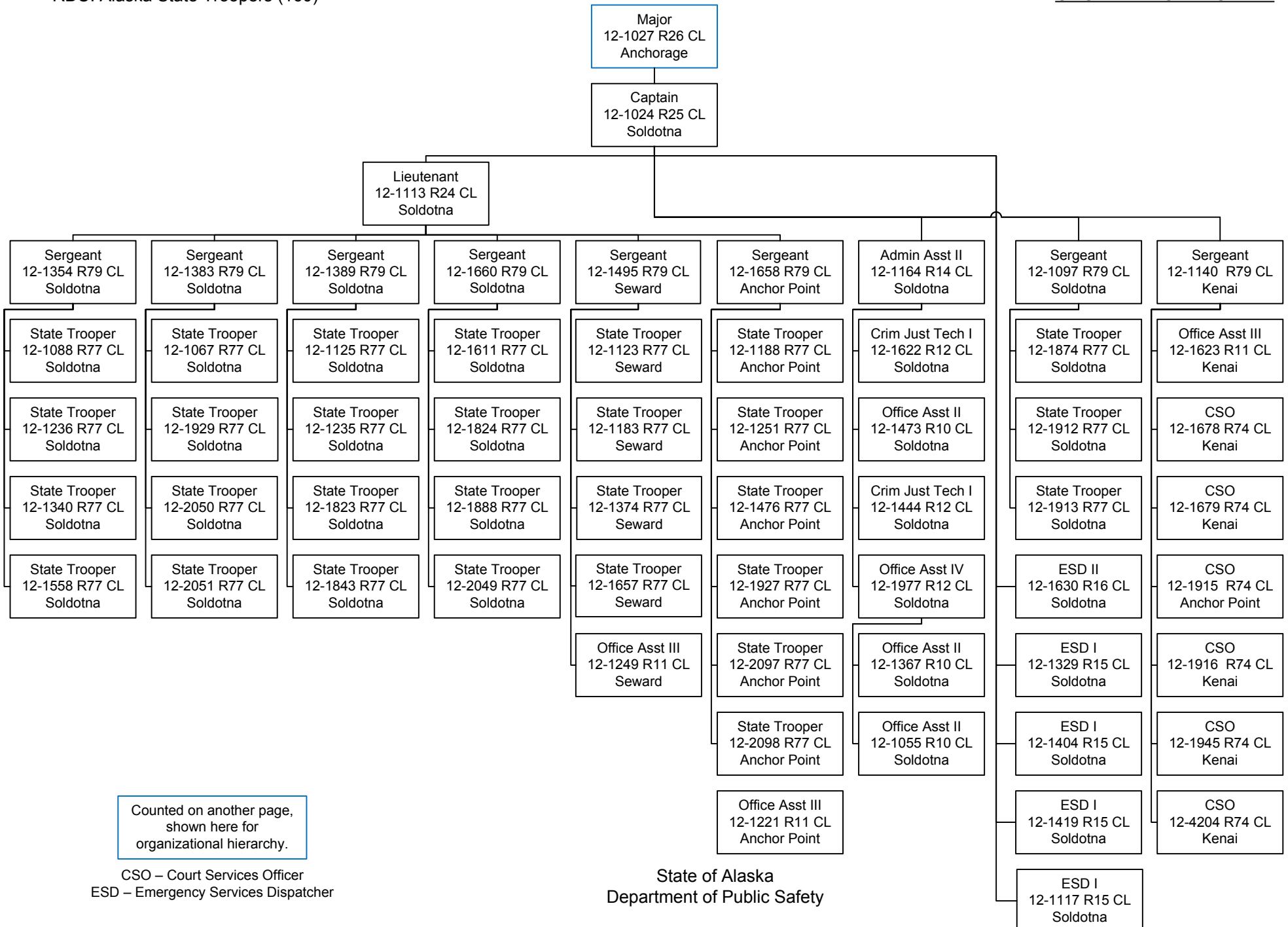
PCN	Job Class Title	Time Status	Retire Code	Barg Unit	Location	Salary Sched	Range / Step	Comp Months	Split / Count	Annual Salaries	COLA	Premium Pay	Annual Benefits	Total Costs	UGF Amount
		Total Positions	New	Deleted										Total Salary Costs:	42,498,445
														Total COLA:	1,542,646
	Full Time Positions:	417	0	0										Total Premium Pay:	5,516,388
	Part Time Positions:	0	0	0										Total Benefits:	25,496,333
	Non Permanent Positions:	9	1	0											
	Positions in Component:	426	1	0											
	Total Component Months:	5,112.0													
														Total Pre-Vacancy:	75,053,812
														Minus Vacancy Adjustment of 6.01%:	(4,513,512)
														Total Post-Vacancy:	70,540,300
														Plus Lump Sum Premium Pay:	0
														Personal Services Line 100:	70,540,300

PCN Funding Sources:	Pre-Vacancy	Post-Vacancy	Percent
1004 General Fund Receipts	74,909,791	70,404,940	99.81%
1007 Interagency Receipts	144,021	135,360	0.19%
Total PCN Funding:	75,053,812	70,540,300	100.00%

Note: If a position is split, an asterisk (*) will appear in the Split/Count column. If the split position is also counted in the component, two asterisks (**) will appear in this column. [No valid job title] appearing in the Job Class Title indicates that the PCN has an invalid class code or invalid range for the class code effective date of this scenario.

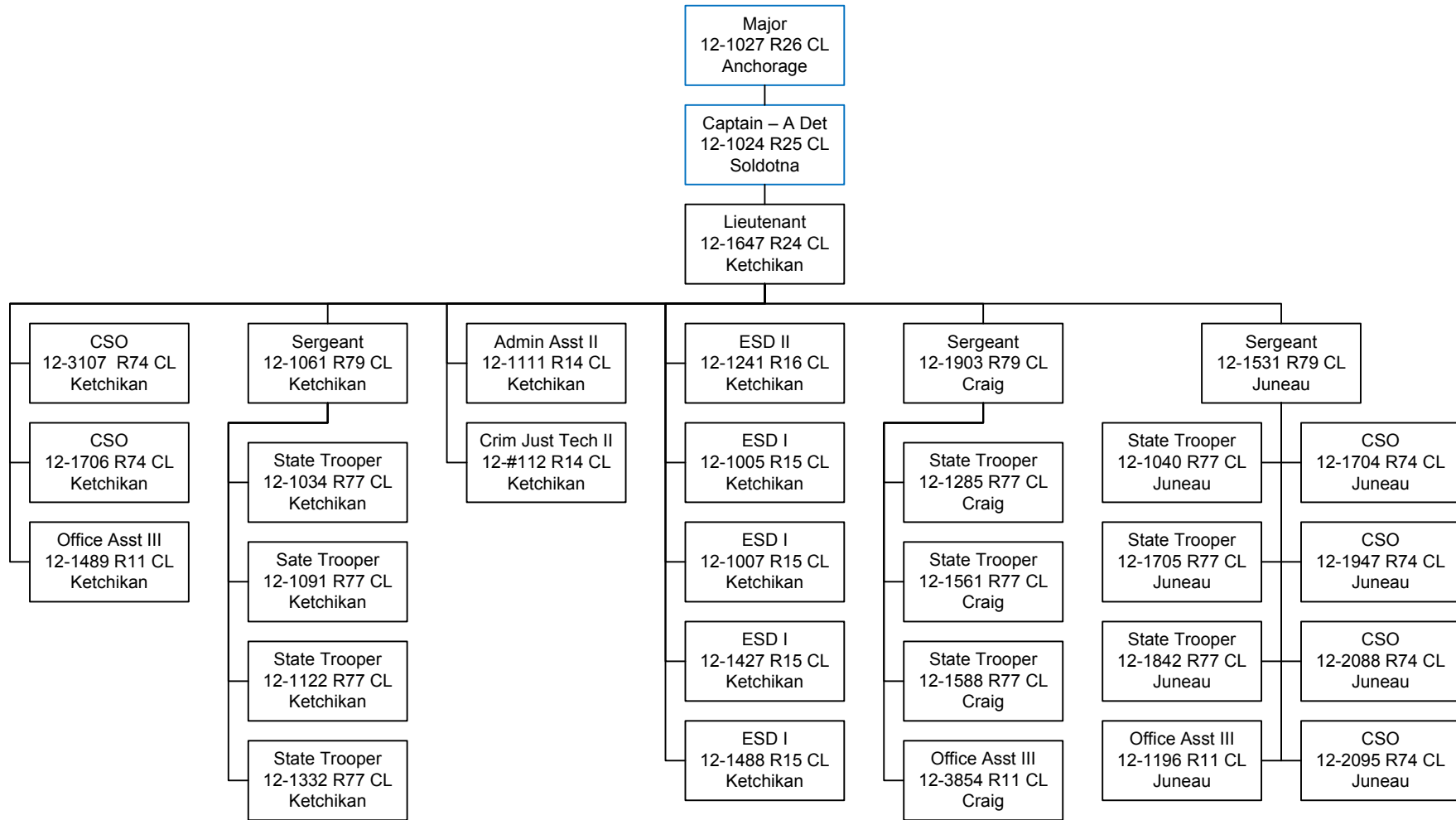


LTNP Position



Counted on another page,
 shown here for
 organizational hierarchy.

CSO – Court Services Officer
 ESD – Emergency Services Dispatcher

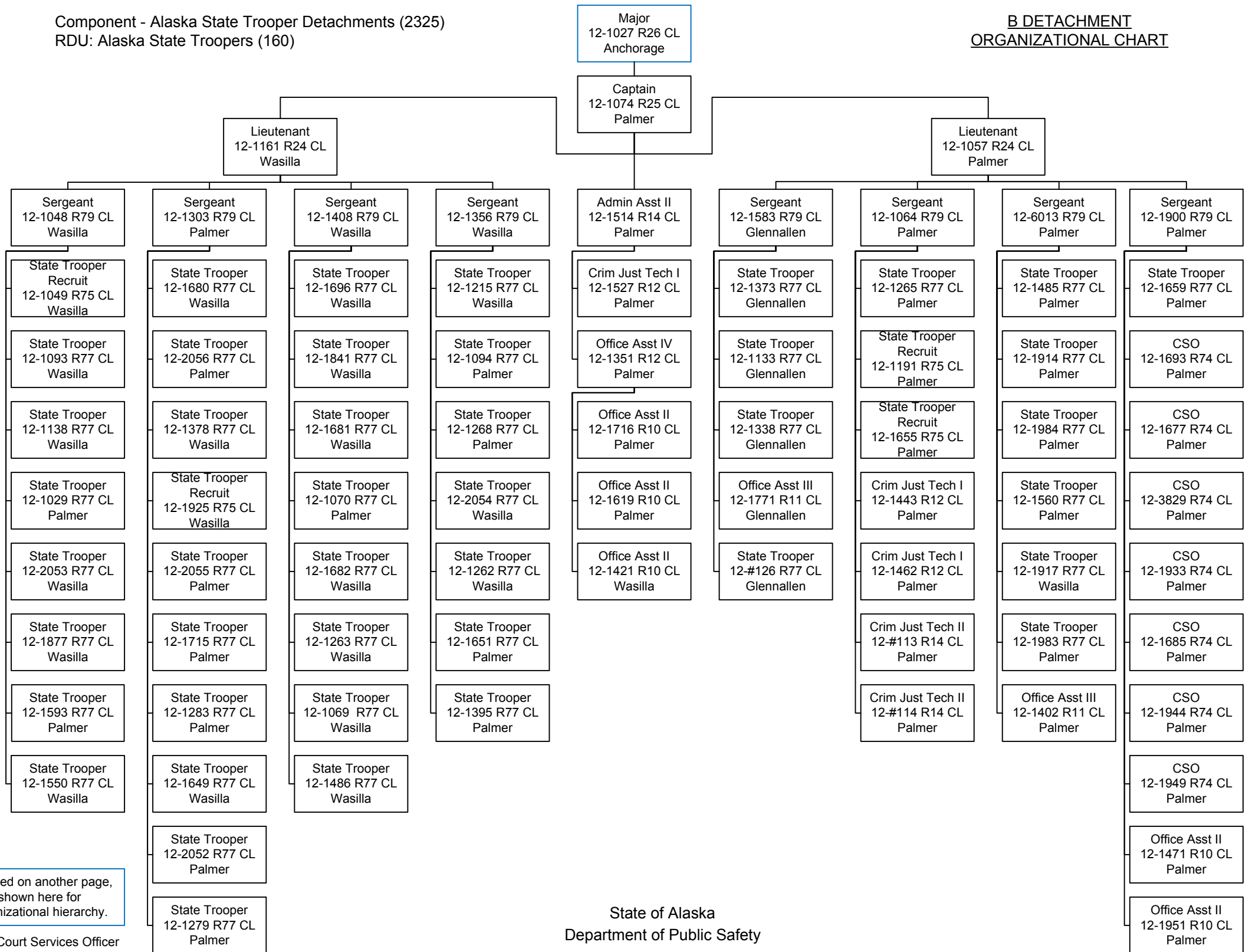


Counted on another page,
 shown here for
 organizational structure.

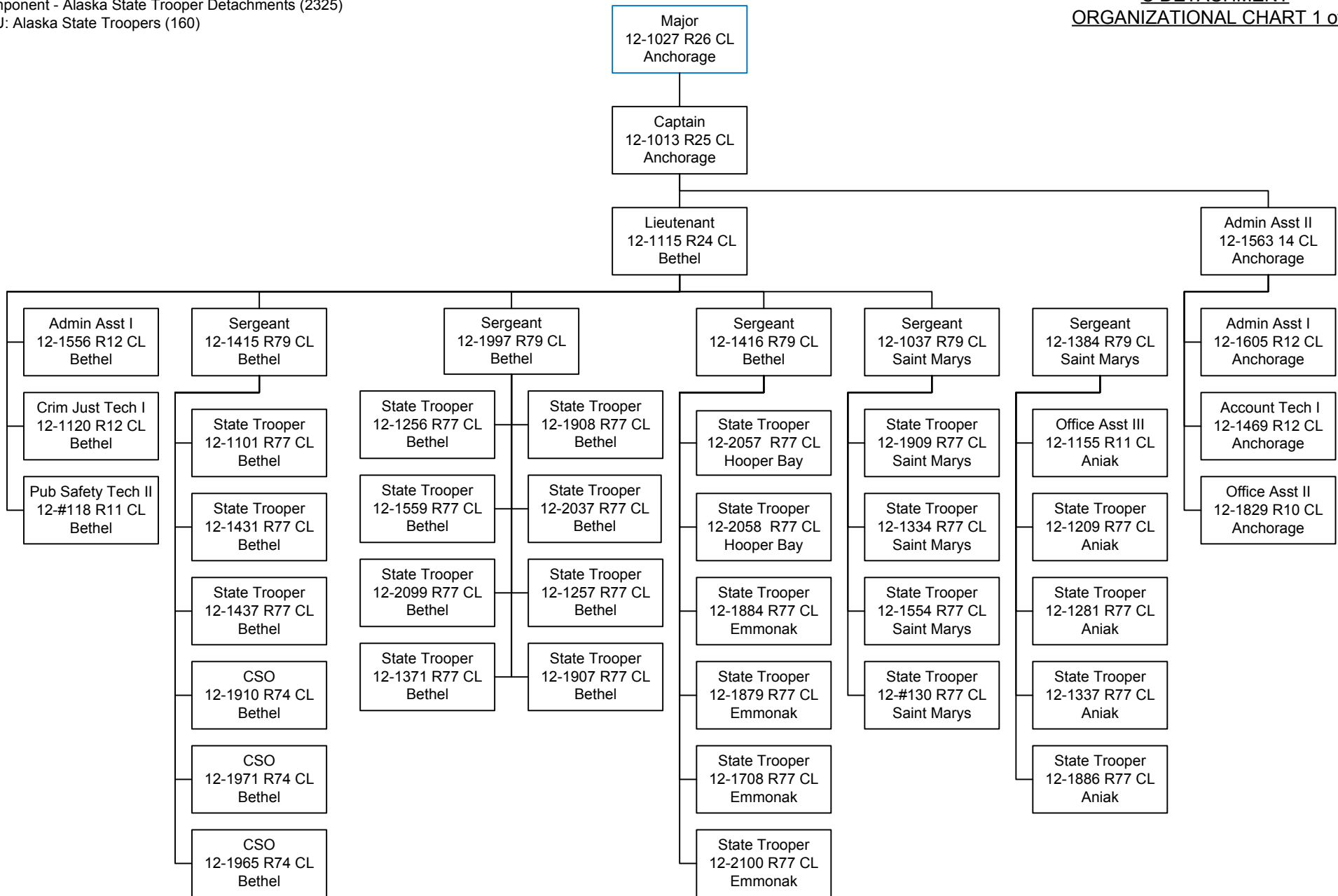
CSO – Court Service Officer
 ESD – Emergency Service Dispatcher

Component - Alaska State Trooper Detachments (2325)
 RDU: Alaska State Troopers (160)

B DETACHMENT
ORGANIZATIONAL CHART

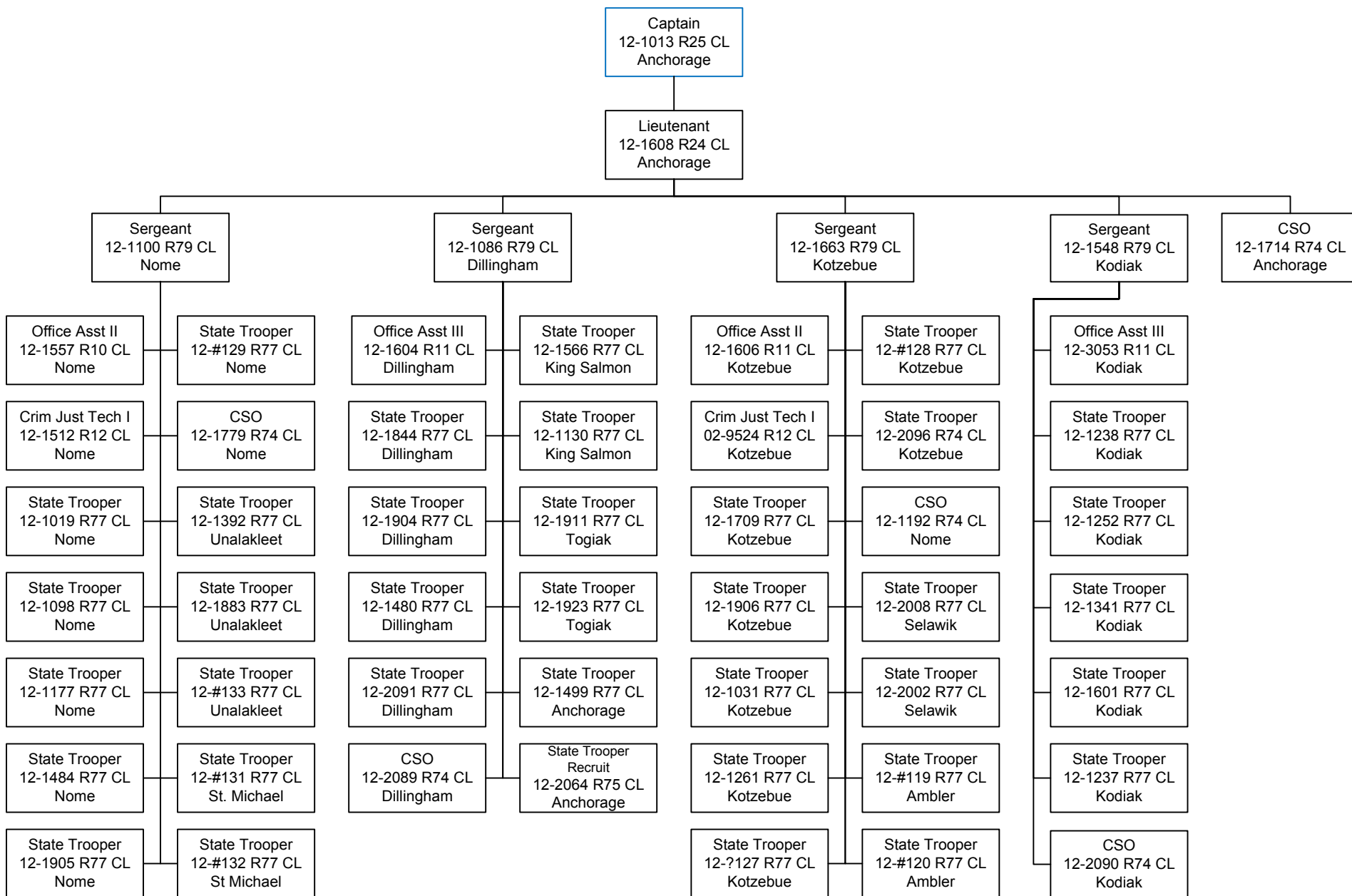


Counted on another page,
 shown here for
 organizational hierarchy.



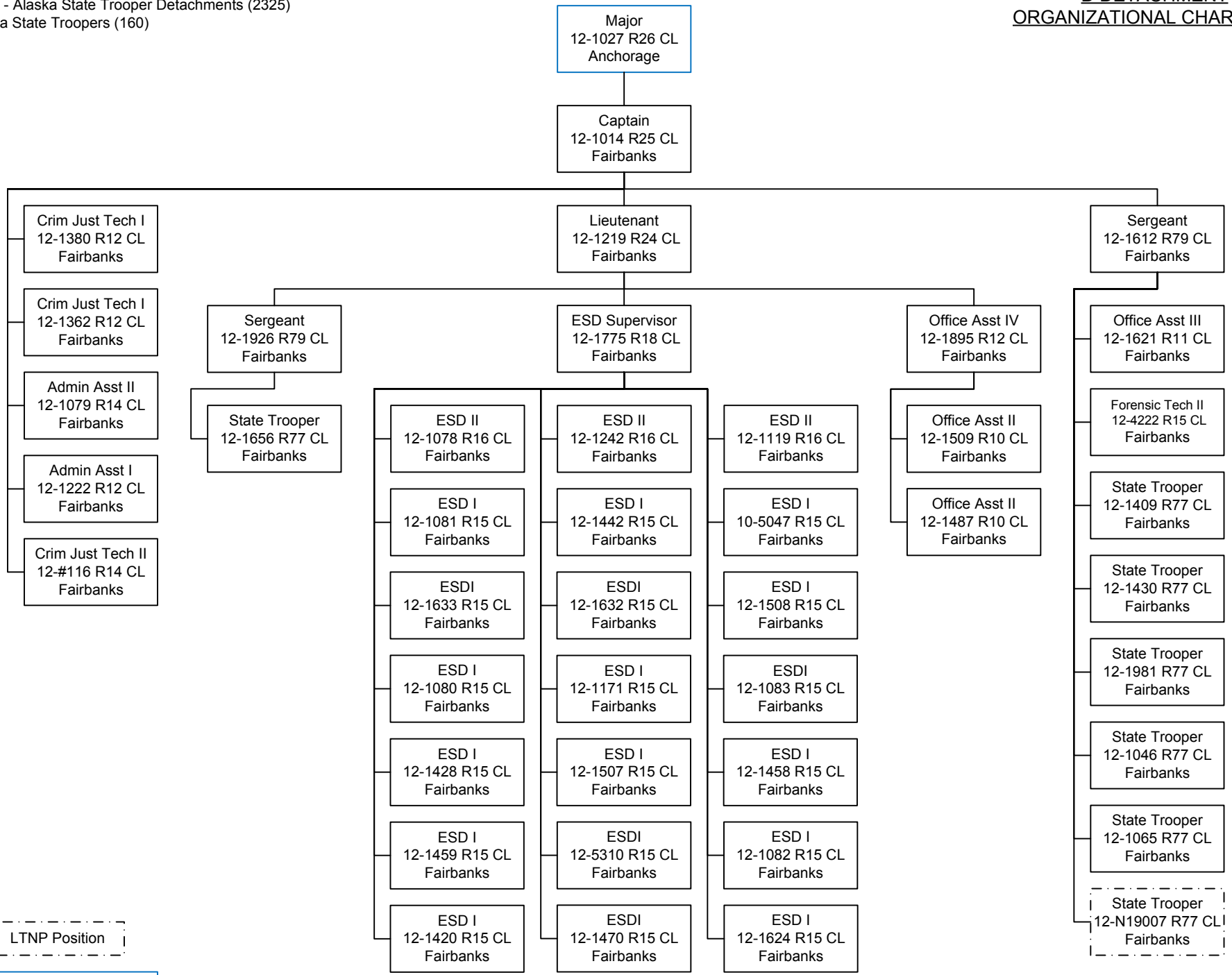
Counted on another page,
 shown here for
 organizational hierarchy.

CSO – Court Services Officer



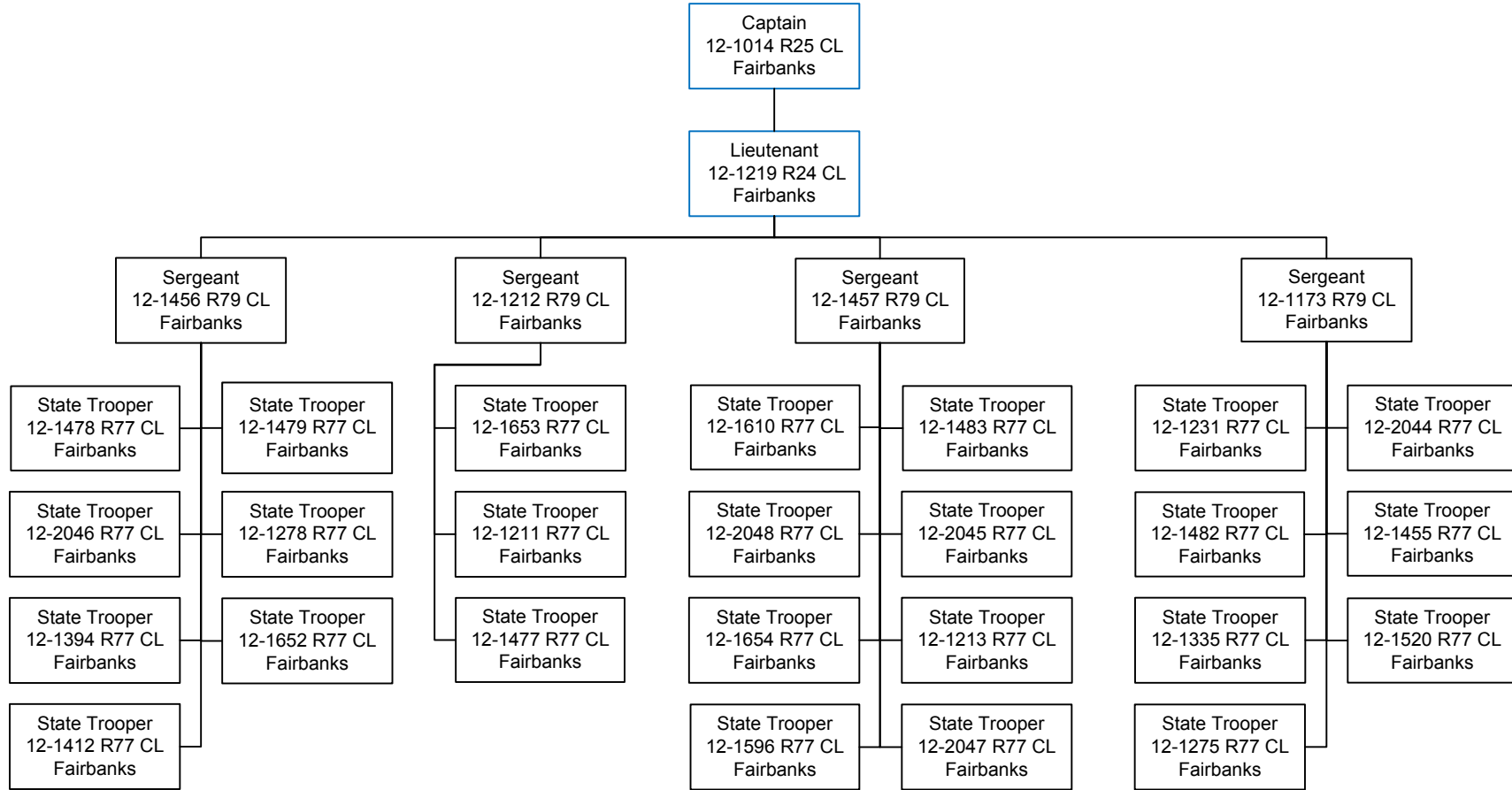
Counted on another page,
 shown here for
 organizational hierarchy.

CSO – Court Services Officer

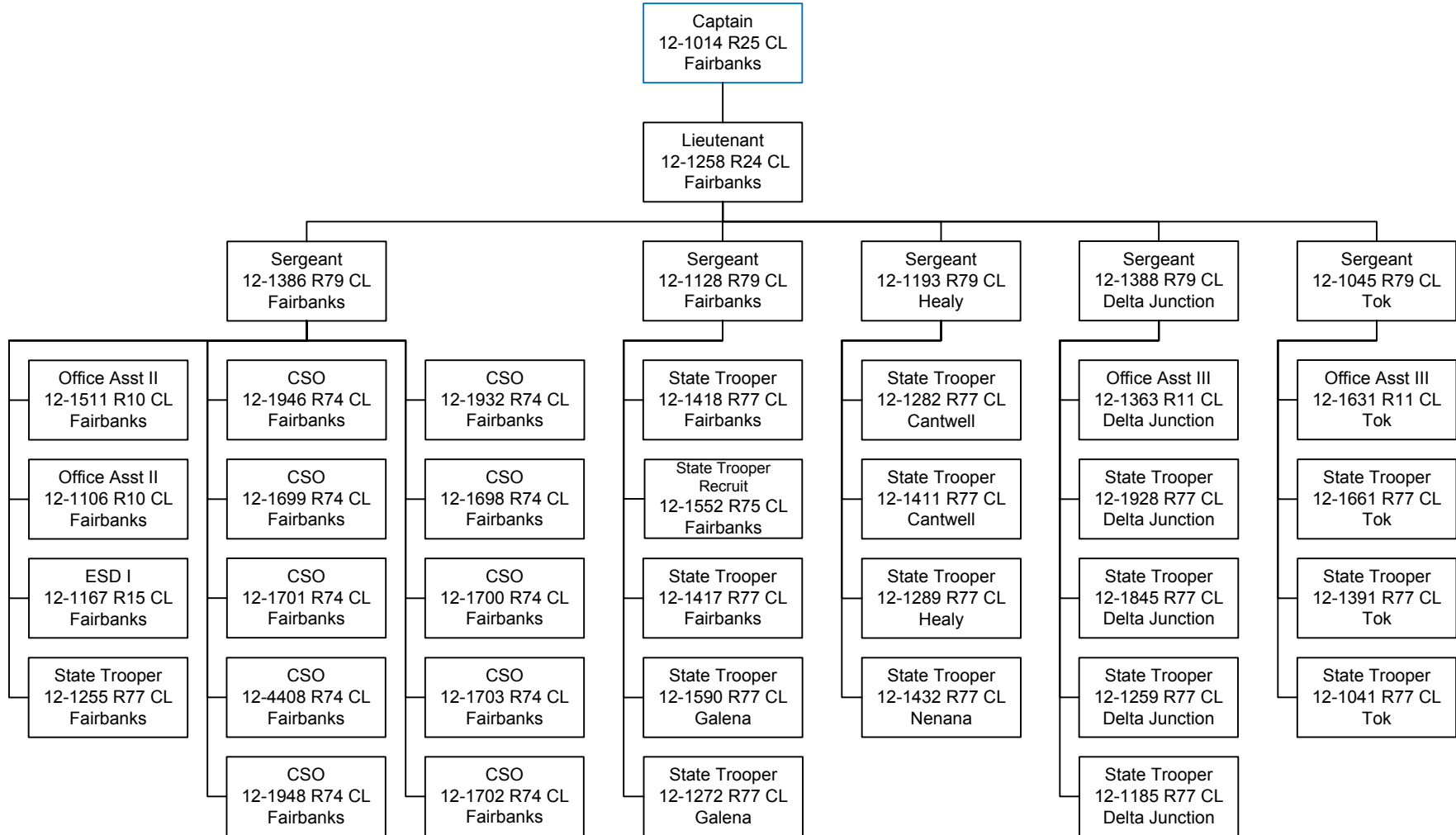


LTNP Position

Counted on another page,
 shown here for
 organizational hierarchy.



Counted on another page,
shown here for
organizational hierarchy.



Counted on another page,
 shown here for
 organizational hierarchy.

CSO – Court Services Officer
 ESD – Emergency Services Dispatcher