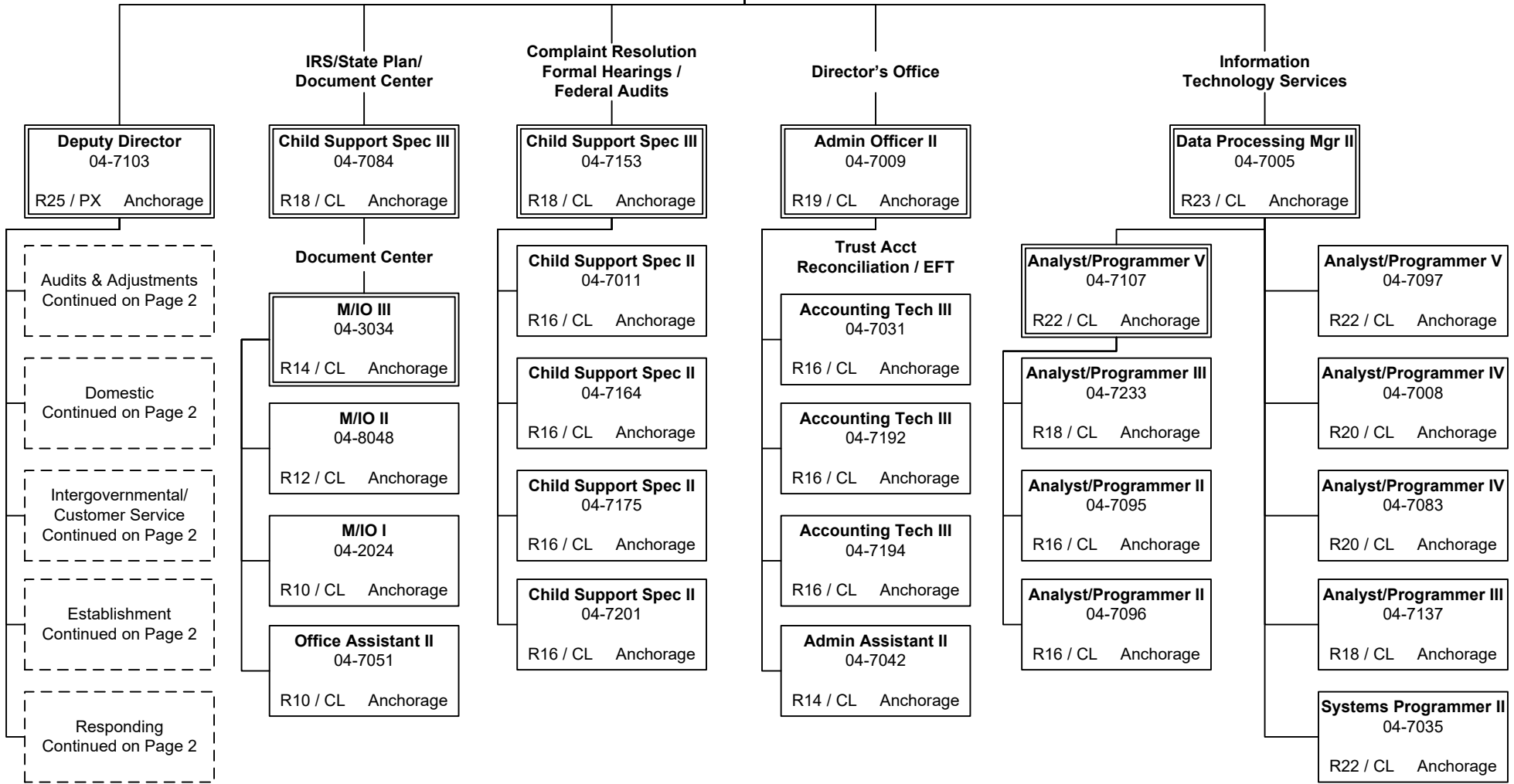


Department of Revenue
 Child Support Services Division (111)
 RDU: Child Support Services (41)
 FY2022 Governor's Budget
 Position Totals: 193 PFT
 Page 1 of 2

Division Director
 04-7001
 R27 / PX Anchorage



M/IO = Microfilm/Imaging Operator

Department of Revenue
Child Support Services Division
Page 2 of 2

Deputy Director
 04-7103
 R25 / PX Anchorage

Case Financials

Program Manager
 04-7087
 R22 / CL Anchorage

Enforcement Actions

Program Manager
 04-7077
 R22 / CL Anchorage

Special Forces Unit

Program Manager
 04-7072
 R22 / CL Anchorage

Audits & Adjustments

Accountant III
 04-7082
 R18 / CL Anchorage

Accounting Tech III
 04-7114 04-7126
 04-7127 04-7225
 (4)
 R16 / CL Anchorage

Accounting Tech II
 04-0029 04-7010
 04-7032 04-7060
 04-7064 04-7073
 04-7111 04-7120
 04-7129 04-7182
 04-7189 04-7209
 04-7188
 (13)
 R14 / CL Anchorage

Accounting Tech I
 04-0026 04-0027
 04-7036 04-7062
 04-7066 04-7091
 04-7092 04-7123
 04-7135 04-7193
 04-7205
 (11)
 R12 / CL Anchorage

Establishment

Child Support Spec III
 04-7197
 R18 / CL Anchorage

Child Support Spec II
 04-7043 04-7142
 04-7152 04-7169
 (4)
 R16 / CL Anchorage

Child Support Spec I
 04-7018 04-7019
 04-7057 04-7074
 04-7098 04-7106
 04-7139 04-7140
 04-7147 04-7158
 04-7160 04-7172
 04-7183 04-7196
 04-7210 04-7211
 04-7214 04-7224
 04-7226 04-7230
 (20)
 R14 / CL Anchorage

Office Assistant II
 04-7006 04-7021
 04-7119 04-7131
 04-7195 04-7199
 04-7227
 (7)
 R10 / CL Anchorage

Domestic

Child Support Spec III
 04-7063
 R18 / CL Anchorage

Child Support Spec II
 04-0028 04-7004
 04-7022 04-7206
 (4)
 R16 / CL Anchorage

Child Support Spec I
 04-7025 04-7028
 04-7038 04-7044
 04-7049 04-7075
 04-7078 04-7080
 04-7081 04-7100
 04-7117 04-7132
 04-7144 04-7145
 04-7146 04-7148
 04-7178 04-7186
 04-7202 04-7213
 04-7221 04-7223
 04-7232
 (23)
 R14 / CL Anchorage

Office Assistant II
 04-7007 04-7026
 04-7034 04-7094
 04-7101 04-7133
 04-7136 04-7203
 (8)
 R10 / CL Anchorage

Intergovernmental

Child Support Spec III
 04-7012
 R18 / CL Anchorage

Child Support Spec II
 04-7039 04-7112
 04-7187 04-7222
 (4)
 R16 / CL Anchorage

Child Support Spec I
 04-7014 04-7027
 04-7041 04-7048
 04-7050 04-7055
 04-7085 04-7086
 04-7088 04-7116
 04-7122 04-7159
 04-7161 04-7170
 04-7171 04-7173
 04-7174 04-7200
 04-7208 04-7215
 04-7216
 (21)
 R14 / CL Anchorage

Office Assistant II
 04-7015 04-7023
 04-7037 04-7113
 04-7176 04-7177
 (6)
 R10 / CL Anchorage

Criminal Investigations

Investigator IV
 04-7058
 R20 / CL Anchorage

Investigator III
 04-7228
 R18 / CL Anchorage

CATT

Child Support Spec III
 04-7155
 R18 / CL Anchorage

Child Support Spec II
 04-7020 04-7053
 04-7070 04-7124
 (4)
 R16 / CL Anchorage

Child Support Spec I
 04-7016 04-7045
 04-7056 04-7128
 04-7141 04-7150
 04-7163 04-7181
 04-7184 04-7204
 04-7212
 (11)
 R14 / CL Anchorage

Office Assistant II
 04-7030 04-7052
 04-7067 04-7090
 04-7099 04-7102
 04-7104 04-7109
 04-7134 04-7143
 04-7166 04-7167
 04-7229
 (13)
 R10 / CL Anchorage

Research & Development

Info System Coord
 04-7185
 R18 / CL Anchorage

Child Support Spec II
 04-7047
 R16 / CL Anchorage

Child Support Spec II
 04-7105
 R16 / CL Anchorage