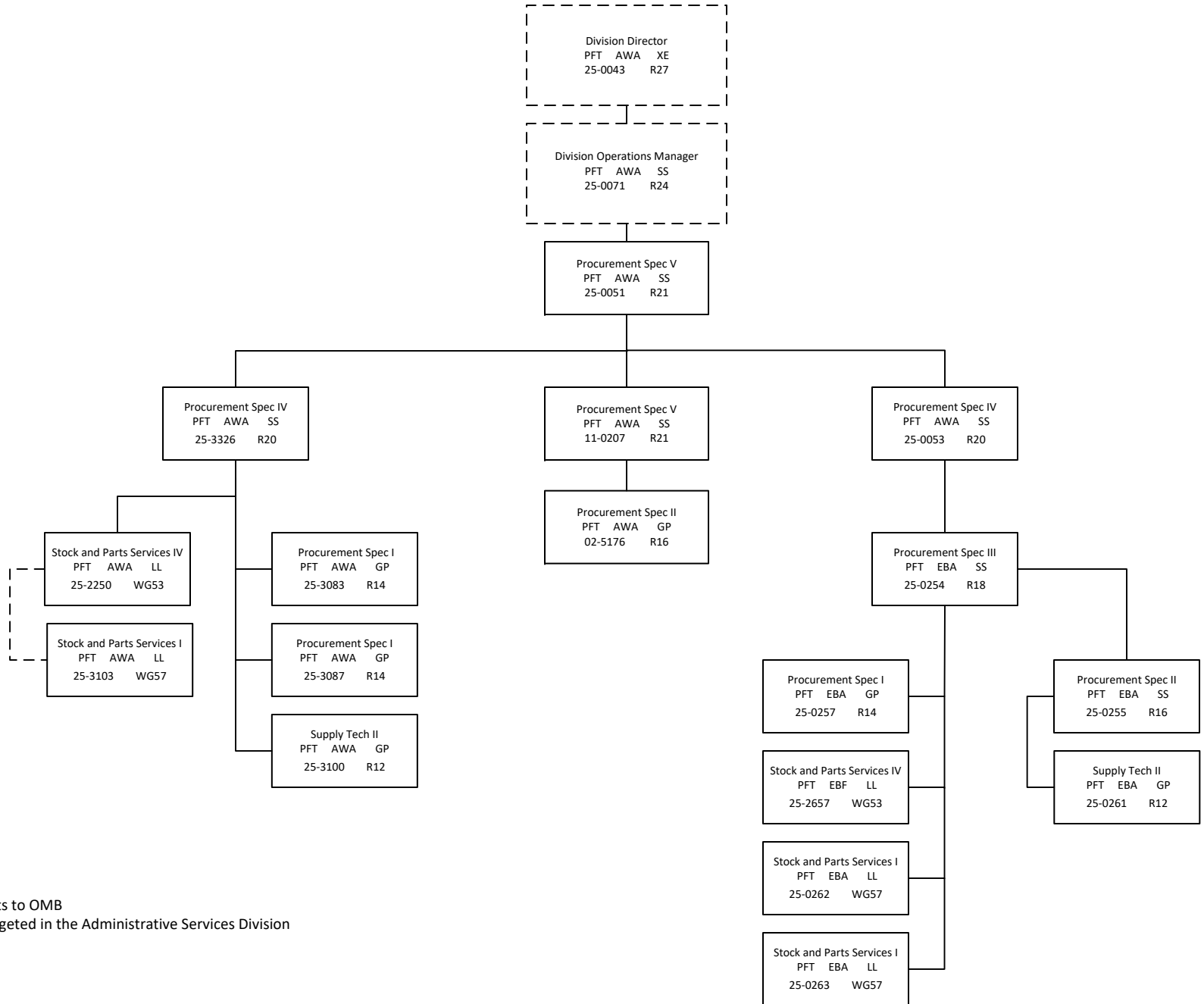


Department of Transportation & Public Facilities (25)
 RDU: Administration and Support (333)
 Component: Statewide Procurement (2851)
 FY2022 Governor's Budget
 17 PFT Positions

Legend
 AWA = Juneau
 EBA = Anchorage
 EBF = Int'l Airport



*PCN 25-0043 reports to OMB

*PCN 25-0071 is budgeted in the Administrative Services Division