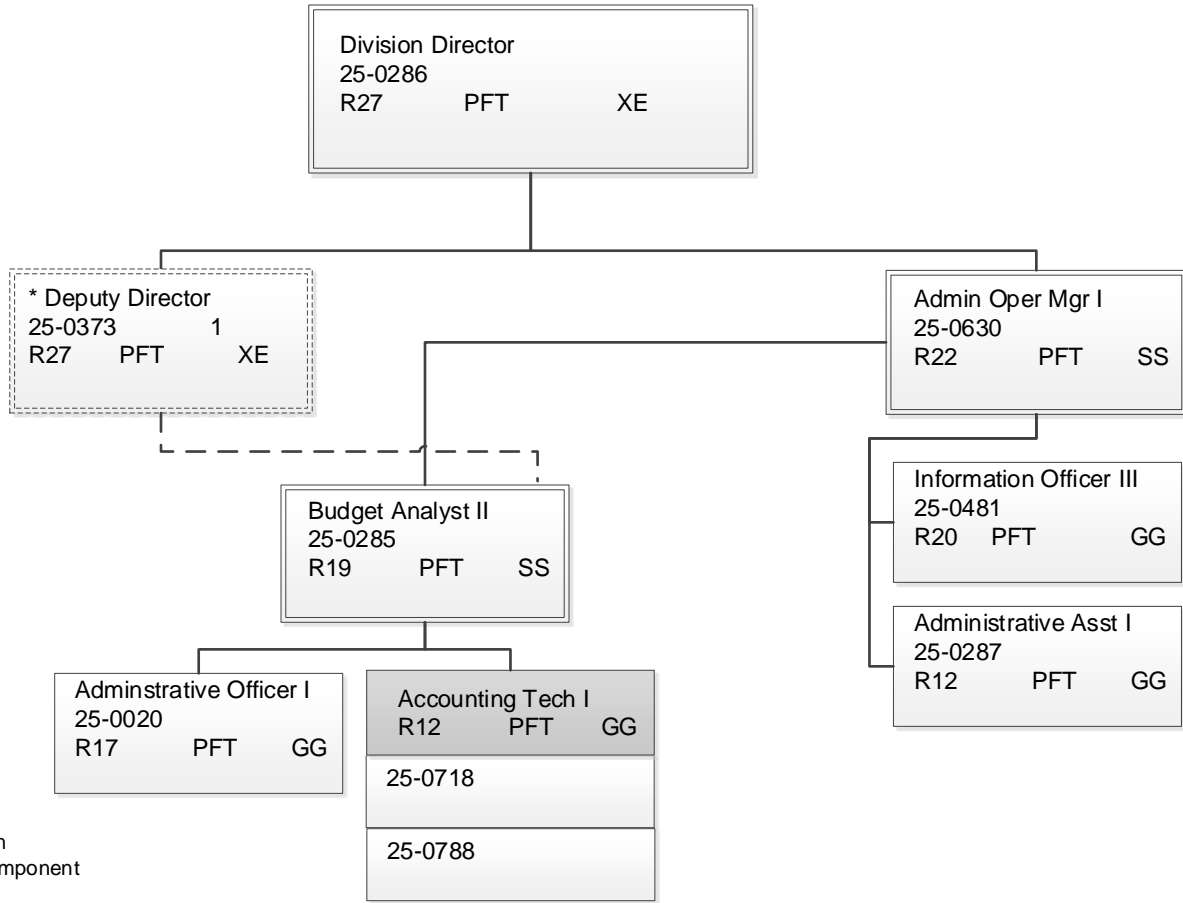


DEPARTMENT OF TRANSPORTATION & PUBLIC FACILITIES
 RDU: REGIONAL SUPPORT SERVICES
 COMPONENT: CENTRAL REGION SUPPORT SERVICES (2292)(T02M)
 FY2022 GOVERNOR'S PLAN

COMPONENT TOTAL:
 FULLTIME POSITIONS: 8
 PARTTIME POSITIONS: 0
 NON PERM POSITIONS: 0
 TOTAL: 8



*PCN 25-0373 is budgeted in the Central Region Construction & CIP Support Services budget component

Note: All positions are located in Anchorage.