

State of Alaska
FY2022 Governor's Operating Budget

Department of Transportation/Public Facilities
Measurement Standards & Commercial Vehicle Compliance
Component Budget Summary

Component: Measurement Standards & Commercial Vehicle Compliance**Contribution to Department's Mission**

Measurement Standards & Commercial Vehicle Compliance's contribution to "*Keep Alaska Moving* through Service and Infrastructure" is to enhance the safety of the motoring public, preserve public infrastructure, and ensure marketplace confidence and equitable trade.

Core Services

- Issue oversize/overweight permits for vehicles and loads.
- Operate nine fixed, functional inspection/weigh stations at key locations (Glenn Highway North and South Bound, Potter, Sterling, Fox, Ester, Richardson North and South Bound, and Tok).
- Conduct size and weight enforcement along with safety inspections.
- Provide safety and hazardous material transport training and coordination of secondary size, weight, and safety enforcement activities with other state and local enforcement agencies.
- Inspect and test commercial weighing and measuring devices to ensure compliance with law and regulation.
- Test prepackaged commodities by weight, volume, or count and evaluate retail-scanning systems to ensure consumer confidence.
- Provide calibration and certification for the standards used by Weights and Measures Inspectors and other government agencies and industries.

Major Component Accomplishments in 2020

- Conducted 5,382 commercial motor vehicle safety inspections with 601 vehicles placed out-of-service for safety violations and 78 drivers placed out-of-service for safety violations.
- The intelligent roadside operations computer at the Glenn Highway inspection/weigh station processed 32,775 credential checks on vehicles and of those, 30,514 were bypassed.
- 98.6% of vehicles weighed were in compliance with size and weight limits.
- Issued 16,023 oversize/overweight permits helping to preserve infrastructure and increase safety of the traveling public.
- Inspected 6,592 scales, 5,313 meters, and 137 accessories (total of 12,042 in support of construction, fishing, mining, and petroleum industries).
- Testing and registration of 844 scales used in the regulation of the commercial marijuana industry.

Key Component Challenges

- Collecting commercial motor vehicle data for Crash Timeliness Measure reporting of fatal and non-fatal crashes.
- Oversize/overweight permitting program and scale program are reaching end of life, which provide critical support to federal mandatory requirements.
- Recruitment and retention of certified commercial vehicle compliance inspectors and weights-and-measures inspectors.
- Lack of journeyman weights-and-measures inspectors to use for training in Anchorage and to inspect medium and large meters in Western Alaska.

COVID-19 Response and Telework Challenges

- Suspension of permit fees for oversize and overweight vehicles has significantly impacted operating revenue.
- Extension of expiration dates for devices used to measure and weigh.
- Implemented innovative solutions for Weights and Measures testing of scales and meters at remote locations using virtual technology including video on skype and cell phones.
- Procurement of laptops for staff to telework.

Significant Changes in Results to be Delivered in FY2022

Northern region Weights and Measures inspections to be conducted out of the Fairbanks weigh station facilities.

Statutory and Regulatory Authority

AS 45.75 Weights & Measures Act
AS 19.10.060 Size, Weight, & Load Provisions; Restriction on Use of Highways; Commercial Vehicle Inspection Program
AS 19.10.300 Financial Responsibility (Commercial Motor Vehicle)
AS 19.10.310 Commercial Motor Vehicle Safety Inspections
17 AAC 25 Truck Size, Weight and Safety Regulations
17 AAC 28 Busses
17 AAC 90 Specifications, Tolerances, and Regulations for Weighing and Measuring Devices

Contact Information
<p>Contact: Dan V. Smith, Director Phone: (907) 365-1210 E-mail: Dan.Smith1@alaska.gov</p>

Measurement Standards & Commercial Vehicle Compliance Personal Services Information				
Authorized Positions			Personal Services Costs	
	FY2021 Management Plan	FY2022 Governor		
			Annual Salaries	3,506,467
Full-time	60	60	COLA	37,935
Part-time	0	0	Premium Pay	81,998
Nonpermanent	0	0	Annual Benefits	2,456,842
			<i>Less 6.90% Vacancy Factor</i>	<i>(419,542)</i>
			Lump Sum Premium Pay	0
Totals	60	60	Total Personal Services	5,663,700

Position Classification Summary					
Job Class Title	Anchorage	Fairbanks	Juneau	Others	Total
Accountant III	1	0	0	0	1
Accounting Technician I	1	0	0	0	1
Administrative Assistant II	1	0	0	0	1
Administrative Officer II	1	0	0	0	1
Chf Wm/Prmts	2	0	0	0	2
Comm Veh Ci I	4	2	0	0	6
Comm Veh Ci II	6	4	0	4	14
Comm Veh Ci III	2	2	0	1	5
Comm Veh Ci IV	2	1	0	1	4
Comm Veh Ci V	1	0	0	0	1
Division Director - Px	1	0	0	0	1
Grants Administrator II	1	0	0	0	1
Grants Administrator III	1	0	0	0	1
Ms Stand Spvr	1	0	0	0	1
Office Assistant II	4	0	0	0	4
Program Coordinator II	1	0	0	0	1
Project Assistant	1	0	0	0	1
Research Analyst I	1	0	0	0	1
Secretary	1	0	0	0	1
State Metrologist I	1	0	0	0	1
State Metrologist II	1	0	0	0	1
Weights & Measures Inspector I	3	0	0	0	3
Wm Inspect Trn	4	0	0	0	4
Wm Inspector II	0	1	2	0	3
Totals	42	10	2	6	60

Component Detail All Funds
Department of Transportation/Public Facilities

Component: Measurement Standards & Commercial Vehicle Compliance (2332)
RDU: Administration and Support (333)

Non-Formula Component

	FY2020 Actuals	FY2021 Conference Committee	FY2021 Authorized	FY2021 Management Plan	FY2022 Governor	FY2021 Management Plan vs FY2022 Governor	
71000 Personal Services	4,620.8	5,877.5	5,877.5	5,627.5	5,663.7	36.2	0.6%
72000 Travel	66.8	233.5	158.6	158.6	158.6	0.0	0.0%
73000 Services	609.5	784.2	784.2	1,034.2	1,233.8	199.6	19.3%
74000 Commodities	90.0	87.5	87.5	87.5	105.0	17.5	20.0%
75000 Capital Outlay	18.7	39.4	39.4	39.4	39.4	0.0	0.0%
77000 Grants, Benefits	0.0	0.0	0.0	0.0	0.0	0.0	0.0%
78000 Miscellaneous	0.0	0.0	0.0	0.0	0.0	0.0	0.0%
Totals	5,405.8	7,022.1	6,947.2	6,947.2	7,200.5	253.3	3.6%
Fund Sources:							
1001 CBR Fund (UGF)	0.0	286.1	286.1	286.1	0.0	-286.1	-100.0%
1004 Gen Fund (UGF)	1,004.7	858.1	858.1	858.1	1,281.5	423.4	49.3%
1005 GF/Prgm (DGF)	2,319.8	3,136.1	3,068.0	3,068.0	3,082.8	14.8	0.5%
1007 I/A Rcpts (Other)	3.2	15.0	15.0	15.0	15.0	0.0	0.0%
1061 CIP Rcpts (Other)	1,480.9	2,063.8	2,063.8	2,063.8	2,143.3	79.5	3.9%
1215 UCR Rcpts (Other)	597.2	663.0	656.2	656.2	677.9	21.7	3.3%
Unrestricted General (UGF)	1,004.7	1,144.2	1,144.2	1,144.2	1,281.5	137.3	12.0%
Designated General (DGF)	2,319.8	3,136.1	3,068.0	3,068.0	3,082.8	14.8	0.5%
Other Funds	2,081.3	2,741.8	2,735.0	2,735.0	2,836.2	101.2	3.7%
Federal Funds	0.0	0.0	0.0	0.0	0.0	0.0	0.0%
Positions:							
Permanent Full Time	60	60	60	60	60	0	0.0%
Permanent Part Time	0	0	0	0	0	0	0.0%
Non Permanent	0	0	0	0	0	0	0.0%

Change Record Detail - Multiple Scenarios with Descriptions
Department of Transportation/Public Facilities

Component: Measurement Standards & Commercial Vehicle Compliance (2332)

RDU: Administration and Support (333)

Scenario/Change Record Title	Trans Type	Totals	Personal Services	Travel	Services	Commodities	Capital Outlay	Grants, Benefits	Miscellaneous	Positions		NP
										PFT	PPT	
***** Changes From FY2021 Conference Committee To FY2021 Authorized *****												
Conference Committee												
	ConfCom	7,022.1	5,877.5	233.5	784.2	87.5	39.4	0.0	0.0	60	0	0
1001 CBR Fund		286.1										
1004 Gen Fund		858.1										
1005 GF/Prgm		3,136.1										
1007 I/A Rcpts		15.0										
1061 CIP Rcpts		2,063.8										
1215 UCR Rcpts		663.0										
Eliminate Restoration of Non-UGF Travel Reductions from FY2020												
	Veto	-74.9	0.0	-74.9	0.0	0.0	0.0	0.0	0.0	0	0	0
1005 GF/Prgm		-68.1										
1215 UCR Rcpts		-6.8										
This is a legislative restoration of previous year vetoes. Due to the COVID-19 Travel Mandate, the Department will continue to manage with available funds.												
Subtotal		6,947.2	5,877.5	158.6	784.2	87.5	39.4	0.0	0.0	60	0	0
***** Changes From FY2021 Authorized To FY2021 Management Plan *****												
Align Authority with Anticipated Expenditures												
	LIT	0.0	-250.0	0.0	250.0	0.0	0.0	0.0	0.0	0	0	0
Transfer authority from personal services to the services line to cover anticipated expenditures. The remaining personal services authority is sufficient to cover anticipated expenditures due to staff turnover.												
Subtotal		6,947.2	5,627.5	158.6	1,034.2	87.5	39.4	0.0	0.0	60	0	0
***** Changes From FY2021 Management Plan To FY2022 Governor *****												
FY2022 Salary Adjustments												
	SalAdj	36.2	36.2	0.0	0.0	0.0	0.0	0.0	0.0	0	0	0
1004 Gen Fund		5.6										
1005 GF/Prgm		14.8										
1061 CIP Rcpts		11.6										
1215 UCR Rcpts		4.2										
FY2022 1% COLA for ASEA/General Government (GG/GP/GY/GZ): \$36.2.												
Add Authority for Critical Inspection Items												
	Inc	17.5	0.0	0.0	0.0	17.5	0.0	0.0	0.0	0	0	0
1215 UCR Rcpts		17.5										

Change Record Detail - Multiple Scenarios with Descriptions
Department of Transportation/Public Facilities

Component: Measurement Standards & Commercial Vehicle Compliance (2332)

RDU: Administration and Support (333)

Scenario/Change Record Title	Trans Type	Totals	Personal Services	Travel	Services	Commodities	Capital Outlay	Grants, Benefits	Miscellaneous	Positions		NP
										PFT	PPT	
Unified Carrier Registration (UCR) receipts can only be spent on motor carrier safety programs, motor carrier enforcement programs, or administration of the unified carrier fee system. An increase to the commodities line is necessary to purchase critical inspection items including personal protective equipment; two-way radios; laptop computers with mobile printers; uniform items; and printed Federal regulations in support of these programs. The UCR receipts may be used in conjunction with Motor Carrier Safety Assistance Program grant funds for items with prorated costs in accordance with the approved Commercial Vehicle Safety Plan.												
Transfer from Statewide Design and Engineering Services to Align Authorization with Anticipated Expenditures												
1061 CIP Rcpts	Trin	67.9	0.0	0.0	67.9	0.0	0.0	0.0	0.0	0	0	0
Transfer excess capital improvement project receipt authority from Statewide Design and Engineering Services to align funding with services required by Measurement Standards and Commercial Vehicle Compliance.												
Authority will be used to cover core services billings.												
Transfer from Human Resources to Fund Employee Based Rates - DOPLR/IRIS HRM												
1004 Gen Fund	Trin	37.7	0.0	0.0	37.7	0.0	0.0	0.0	0.0	0	0	0
Transfer from Human Resources component to fund Division of Personnel and Labor Relations and Integrated Resource Information System Human Resource Management rates which have been incorporated into individual positions.												
Transfer from Information Systems and Services for Employee Based Rates Funding - OIT												
1004 Gen Fund	Trin	94.0	0.0	0.0	94.0	0.0	0.0	0.0	0.0	0	0	0
Transfer from Information Systems and Services component to cover Office of Information Technology rates which have been incorporated into individual positions.												
Fund Source Adjustment of CBRF to UGF												
1001 CBR Fund	FndChg	-286.1	0.0	0.0	0.0	0.0	0.0	0.0	0.0	0	0	0
1004 Gen Fund		286.1										
Replace Constitutional Budget Reserve Fund (CBRF) used as a one-time funding mechanism in FY2021.												
Totals		7,200.5	5,663.7	158.6	1,233.8	105.0	39.4	0.0	0.0	60	0	0

Line Item Detail (1676)
Department of Transportation/Public Facilities
Travel

Component: Measurement Standards & Commercial Vehicle Compliance (2332)

Line Number	Line Name		FY2020 Actuals	FY2021 Management Plan	FY2022 Governor
2000	Travel		66.8	158.6	158.6
Object Class	Servicing Agency	Explanation	FY2020 Actuals	FY2021 Management Plan	FY2022 Governor
2000 Travel Detail Totals			66.8	158.6	158.6
2000	In-State Employee Travel	Airfare for employees to perform weights and measures inspections, commercial vehicle enforcement activities, training, or management meetings.	14.2	60.4	60.4
2000	In-State Employee Travel	Surface transportation for employees to perform weights and measures inspections, commercial vehicle enforcement activities, training, or management meetings.	7.1	15.0	15.0
2000	In-State Employee Travel	Lodging for employees traveling to perform weights and measures inspections, commercial vehicle enforcement activities, training, or management meetings.	24.2	48.0	48.0
2000	In-State Employee Travel	Meal allowance for employees while in travel status to perform weights and measures inspections, commercial vehicle enforcement activities, training, or management meetings.	13.3	35.2	35.2
2002	Out of State Employee Travel	Out of state employee travel.	7.5	0.0	0.0
2006	Other Travel Costs	Cash advance fee.	0.5	0.0	0.0

Line Item Detail (1676)
Department of Transportation/Public Facilities
Services

Component: Measurement Standards & Commercial Vehicle Compliance (2332)

Line Number	Line Name		FY2020 Actuals	FY2021 Management Plan	FY2022 Governor
3000	Services		609.5	1,034.2	1,233.8
Object Class	Servicing Agency	Explanation	FY2020 Actuals	FY2021 Management Plan	FY2022 Governor
3000 Services Detail Totals			609.5	1,034.2	1,233.8
3000	Education Services	Training or conference fees for employees to attend national conferences, conventions, or meetings.	3.2	6.0	6.0
3001	Financial Services	Credit card processing fees.	22.5	77.0	77.0
3003	Information Technology	Software licensing used in the performance of the division's program activities.	0.0	10.0	10.0
3003	Information Technology	Software maintenance fees to cover support for the various division specific programs used in program specific activities.	3.1	5.0	5.0
3004	Telecommunications	Long distance phone charges made during the course of daily operations. The division has satellite offices within three major areas of the State of Alaska, as well as an 800 line for permit applications.	1.3	18.0	23.0
3004	Telecommunications	Data/network charges for communications services to weigh stations and remote offices for centralized use of databases and networks.	25.4	26.0	26.0
3004	Telecommunications	Cellular phone costs used in the course of conducting program specific functions while employees are in the field and/or traveling.	9.0	10.5	10.5
3005	Health Services	Health services for ergonomic issues	0.7	1.0	1.0

Line Item Detail (1676)
Department of Transportation/Public Facilities
Services

Component: Measurement Standards & Commercial Vehicle Compliance (2332)

Object Class	Servicing Agency	Explanation	FY2020 Actuals	FY2021 Management Plan	FY2022 Governor
3000 Services Detail Totals			609.5	1,034.2	1,233.8
		as they arise.			
3006	Delivery Services	Freight for shipping equipment. Courier services, post office box rentals and postage.	11.5	18.0	20.0
3007	Advertising and Promotions	Advertising costs for public hearings concerning proposed regulation changes.	1.8	2.0	7.0
3008	Utilities	Electricity, water and sewer, and disposal.	1.9	3.0	3.0
3009	Structure/Infrastructure/Land	Annual inspection and recharge of fire extinguishers.	0.2	30.0	37.8
3009	Structure/Infrastructure/Land	Repairs or maintenance on facilities not covered under a lease or Reimbursable Services Agreement. Combined account codes for Janitorial and other repairs/maintenance.	35.5	17.6	25.0
3010	Equipment/Machinery	Repairs for equipment or small machinery used in the course of conducting program specific activities. Includes maintenance of weigh station scales. Combines equipment/machinery repairs/maintenance and rentals/leases.	84.5	131.3	140.0
3011	Other Services	Combined other non-IA services such as fees for printing annual billings, armored car service, laundry.	16.3	30.0	30.0
3011	Other Services	Processing fees charged by the State Travel Office.	0.1	0.0	0.0
3011	Other Services	Safety services.	0.0	1.9	1.9
3017	Inter-Agency Information Technology	Admin - Department-wide Computer services provided by the	72.0	55.0	166.0

Line Item Detail (1676)
Department of Transportation/Public Facilities
Services

Component: Measurement Standards & Commercial Vehicle Compliance (2332)

Object Class	Servicing Agency	Explanation	FY2020 Actuals	FY2021 Management Plan	FY2022 Governor
3000 Services Detail Totals			609.5	1,034.2	1,233.8
Non-Telecommunications		Department of Administration such as central server, data storage, printing, network services, open connect, and task order system.			
3018	Inter-Agency Information Technology Telecommunications	Admin - Department-wide	14.1	15.0	20.0
3020	Inter-Agency Building Maintenance	Trans - Central Region Facilities (566)	0.0	30.0	30.0
3021	Inter-Agency Mail	Admin - Department-wide	0.4	1.0	1.0
3022	Inter-Agency Human Resources	Admin - Department-wide	0.0	1.8	39.5
3024	Inter-Agency Legal	Law - Department-wide	3.2	25.0	30.0
3026	Inter-Agency Insurance	Admin - Department-wide	1.5	0.3	0.3
3027	Inter-Agency Financial	Admin - Department-wide	21.4	30.0	35.0
3028	Inter-Agency Americans with	Admin - Department-wide	0.5	0.3	0.3

Line Item Detail (1676)
Department of Transportation/Public Facilities
Services

Component: Measurement Standards & Commercial Vehicle Compliance (2332)

Object Class	Servicing Agency	Explanation	FY2020 Actuals	FY2021 Management Plan	FY2022 Governor	
3000 Services Detail Totals			609.5	1,034.2	1,233.8	
		Disabilities Act Compliance				
		coordinator for the Americans with Disabilities Act (ADA).				
3029	Inter-Agency Education/Training	E&ED - Department-wide	Inter-agency education/training services.	0.0	0.5	0.5
3036	Inter-Agency Safety	Trans - AIA Administration (613)	Costs associated with finger printing/identification cards.	0.2	0.5	0.5
3037	State Equipment Fleet	Trans - State Equipment Fleet (2791)	State equipment fleet services.	236.7	390.0	390.0
3038	Inter-Agency Management/Consulting	Admin - Department-wide	Shared Services of Alaska accounts payable and travel and expense activities.	41.6	96.5	96.5
3038	Inter-Agency Management/Consulting	Gov - Department-wide	Office of Management and Budget - Budget Analyst support.	0.9	1.0	1.0

Line Item Detail (1676)
Department of Transportation/Public Facilities
Commodities

Component: Measurement Standards & Commercial Vehicle Compliance (2332)

Line Number	Line Name		FY2020 Actuals	FY2021 Management Plan	FY2022 Governor
4000	Commodities		90.0	87.5	105.0
Object Class	Servicing Agency	Explanation	FY2020 Actuals	FY2021 Management Plan	FY2022 Governor
4000 Commodities Detail Totals			90.0	87.5	105.0
4000	Business	Office supplies used to conduct official business; equipment/Furniture/Tools/Vehicles; and Books and educational supplies.	67.8	53.0	60.5
4000	Business	Computer replacement program to replace 16% of the systems hardware each year.	15.0	17.0	17.0
4002	Household/Institutional	Clothing, uniforms, and cleaning supplies.	5.4	7.0	7.0
4003	Scientific and Medical	Instruments and laboratory supplies.	0.0	2.8	2.8
4004	Safety	Fire suppression and other safety equipment necessary to conduct official business. Combines Fire Suppression and Other Safety account codes.	1.8	0.7	10.7
4015	Parts and Supplies	Parts and supplies.	0.0	4.0	4.0
4019	Small Tools/Minor Equipment	Small Tools/Minor Equipment.	0.0	3.0	3.0

Line Item Detail (1676)
Department of Transportation/Public Facilities
Capital Outlay

Component: Measurement Standards & Commercial Vehicle Compliance (2332)

Line Number	Line Name		FY2020 Actuals	FY2021 Management Plan	FY2022 Governor
5000	Capital Outlay		18.7	39.4	39.4
Object Class	Servicing Agency	Explanation	FY2020 Actuals	FY2021 Management Plan	FY2022 Governor
5000 Capital Outlay Detail Totals			18.7	39.4	39.4
5002	Structures and Infrastructure	Structures and infrastructure.	0.0	15.0	15.0
5004	Equipment	Equipment needed in the course of conducting program activities.	18.7	24.4	24.4

Revenue Detail (1681)
Department of Transportation/Public Facilities

Component: Measurement Standards & Commercial Vehicle Compliance (2332)

Revenue Type (OMB Fund Code) Revenue Source	Component	Comment	FY2020 Actuals	FY2021 Management Plan	FY2022 Governor
5005 GF/Prgm (1005 GF/Prgm)			2,496.4	3,068.0	3,082.8
5104 Program Receipts Charges for Services - 3rd Party Collectns		These receipts are derived from the collections for third party trips/fees.	6.4	0.0	0.0
5111 Program Receipts Transportation - Charges for Services		These receipts are derived from the collections for the following fees and permits: Oversize/overweight permit fees; commercial vehicle temporary trip permit fees; measuring device registration fees; metrology laboratory fees; and third party trips/fees. AS 45.75 Weights & Measures Act AS 19.10.060 Size, Weight & Load Provisions; Restriction of Use of Highways; Commercial Vehicle Inspection Program AS 19.10.300 Financial Responsibility (Commercial Motor Vehicle) AS 19.10.310 Commercial Motor Vehicle Inspections 17 AAC 25 Truck Size, Weight and Safety Regulations for Weighing and Measuring Devices	2,490.0	3,068.0	3,082.8
5007 I/A Rcpts (1007 I/A Rcpts)			8.9	15.0	15.0
5301 Inter-Agency Receipts	PubSaf - Department-wide	Reimbursable services agreement with the Department of Public Safety for the certification of radar scanners for the Alaska State Troopers.	8.9	15.0	15.0
5061 CIP Rcpts (1061 CIP Rcpts)			1,480.9	2,063.8	2,143.3

Revenue Detail (1681)
Department of Transportation/Public Facilities

Component: Measurement Standards & Commercial Vehicle Compliance (2332)

Revenue Type (OMB Fund Code)	Component	Comment	FY2020 Actuals	FY2021 Management Plan	FY2022 Governor
5351 Capital Improvement Project Inter-Agency		Capital improvement project receipts for work in direct support of capital projects.	1,182.3	1,757.0	1,836.3
5351 Capital Improvement Project Inter-Agency		Recovery of indirect costs from the capital budget via the department's Indirect Cost Allocation Plan (ICAP).	298.6	306.8	307.0
5215 UCR Rcpts (1215 UCR Rcpts)			597.2	656.2	677.9
5412 Uniform Commercial Registration Fees		These receipts are derived from the collection of the following fees: Unified Carrier Registration (UCR) fees Department of Transportation; Federal Motor Carrier Safety Administration; 49 CFR Part 367; Unified Carrier Act of 2005	597.2	656.2	677.9
6004 Gen Fund (1004 Gen Fund)			1,004.7	858.1	1,281.5
6046 General Fund - Prior Year Reimbursement Recovery		Prior year reimbursement recovery.	1,004.7	858.1	1,281.5

Inter-Agency Services (1682)
Department of Transportation/Public Facilities

Component: Measurement Standards & Commercial Vehicle Compliance (2332)

				FY2020 Actuals	FY2021 Management Plan	FY2022 Governor
Component Totals				392.5	646.9	810.6
			With Department of Administration	151.5	199.9	358.6
			With Department of Transportation/Public Facilities	236.9	420.5	420.5
			With Department of Law	3.2	25.0	30.0
			With Department of Education and Early Development	0.0	0.5	0.5
			With Office of the Governor	0.9	1.0	1.0
Object Class	Servicing Agency	Explanation		FY2020 Actuals	FY2021 Management Plan	FY2022 Governor
3017	Inter-Agency Information Technology Non-Telecommunications	Admin - Department-wide	Computer services provided by the Department of Administration such as central server, data storage, printing, network services, open connect, and task order system.	72.0	55.0	166.0
3018	Inter-Agency Information Technology Telecommunications	Admin - Department-wide	Telecommunications services provided by the Department of Administration such as basic telephone services, equipment and features, dedicated voice/data line service, statewide paging, two-way radio, and video conferencing.	14.1	15.0	20.0
3020	Inter-Agency Building Maintenance	Trans - Central Region Facilities (566)	Reimbursable services agreement with the Department of Transportation and Public Facilities Maintenance and Operations, Central Region Facilities for Weigh Station Maintenance.	0.0	30.0	30.0
3021	Inter-Agency Mail	Admin - Department-wide	Chargeback fees for central mail services such as mailing vendor payments and payroll warrants.	0.4	1.0	1.0
3022	Inter-Agency Human Resources	Admin - Department-wide	Chargeback fees for human resource services such as labor relations, position classification and payroll processing.	0.0	1.8	39.5

Inter-Agency Services (1682)
Department of Transportation/Public Facilities

Component: Measurement Standards & Commercial Vehicle Compliance (2332)

Object Class		Servicing Agency	Explanation	FY2020 Actuals	FY2021 Management Plan	FY2022 Governor
3024	Inter-Agency Legal	Law - Department-wide	Legal services provided by the Department of Law. Legal fees for citation disputes and for regulation/statute changes.	3.2	25.0	30.0
3026	Inter-Agency Insurance	Admin - Department-wide	Reimbursable services agreement with Department of Administration for self- insurance programs.	1.5	0.3	0.3
3027	Inter-Agency Financial	Admin - Department-wide	Chargeback fees for AKPAY/IRIS/ALDER.	21.4	30.0	35.0
3028	Inter-Agency Americans with Disabilities Act Compliance	Admin - Department-wide	Chargeback fees for the statewide coordinator for the Americans with Disabilities Act (ADA).	0.5	0.3	0.3
3029	Inter-Agency Education/Training	E&ED - Department-wide	Inter-agency education/training services.	0.0	0.5	0.5
3036	Inter-Agency Safety	Trans - AIA Administration (613)	Costs associated with finger printing/identification cards.	0.2	0.5	0.5
3037	State Equipment Fleet	Trans - State Equipment Fleet (2791)	State equipment fleet services.	236.7	390.0	390.0
3038	Inter-Agency Management/Consulting	Admin - Department-wide	Shared Services of Alaska accounts payable and travel and expense activities.	41.6	96.5	96.5
3038	Inter-Agency Management/Consulting	Gov - Department-wide	Office of Management and Budget - Budget Analyst support.	0.9	1.0	1.0

Personal Services Expenditure Detail
Department of Transportation/Public Facilities

Scenario: FY2022 Governor (17280)
Component: Measurement Standards & Commercial Vehicle Compliance (2332)
RDU: Administration and Support (333)

PCN	Job Class Title	Time Status	Retire Code	Barg Unit	Location	Salary Sched	Range / Step	Comp Months	Split / Count	Annual Salaries	COLA	Premium Pay	Annual Benefits	Total Costs	UGF Amount
08-5001	Wm Inspector II	FT	A	GP	Juneau	205	16M / N	12.0		78,033	1,110	2,957	48,789	130,889	0
08-5005	Wm Inspect Trn	FT	A	GP	Anchorage	200	12B / C	12.0		41,668	636	4,716	35,971	82,991	0
08-5006	Wm Inspect Trn	FT	A	GP	Anchorage	200	12B / C	12.0		41,156	637	5,344	36,014	83,151	0
08-5031	Accountant III	FT	A	GP	Anchorage	200	18J	12.0		76,050	1,042	0	46,959	124,051	40,417
08-5032	Weights & Measures Inspector I	FT	A	GP	Anchorage	200	14D	12.0		49,979	764	5,766	39,438	95,947	0
08-5038	Wm Inspector II	FT	A	GP	Fairbanks	203	16E / F	12.0		62,226	930	5,670	43,939	112,765	0
08-5039	Wm Inspector II	FT	A	GP	Juneau	205	16P	12.0		85,871	1,222	3,305	51,821	142,219	0
08-5043	Weights & Measures Inspector I	FT	A	GP	Anchorage	200	14C / D	12.0		48,932	747	5,559	38,974	94,212	0
08-5044	State Metrologist II	FT	A	GP	Anchorage	200	18L / M	12.0		82,946	1,137	0	49,514	133,597	0
08-5048	Chf Wm/Prmts	FT	A	SS	Anchorage	200	22A / B	12.0		85,887	0	0	50,643	136,530	0
08-5054	Comm Veh Ci IV	FT	A	SS	Anchorage	200	17B / C	12.0		63,482	0	0	42,344	105,826	29,542
08-5055	Division Director - Px	FT	A	XE	Anchorage	N00	27F / J	12.0		125,985	0	0	65,351	191,336	18,444
08-5056	Chf Wm/Prmts	FT	A	SS	Anchorage	200	22D / E	12.0		94,908	0	0	53,984	148,892	22,477
08-5058	Administrative Assistant II	FT	A	GP	Anchorage	200	14D / E	12.0		50,636	720	1,922	38,258	91,536	6,078
08-5059	Office Assistant II	FT	A	GP	Anchorage	200	10E / F	12.0		40,217	564	915	34,026	75,722	24,700
08-5060	Secretary	FT	A	GP	Anchorage	200	11C / D	12.0		40,016	548	0	33,612	74,176	11,126
08-5061	Project Assistant	FT	A	GP	Anchorage	200	16G	12.0		63,882	875	0	42,452	107,209	29,223
08-5062	Administrative Officer II	FT	A	SS	Anchorage	200	19B / C	12.0		71,700	0	0	45,388	117,088	88,063
08-5064	Office Assistant II	FT	A	GP	Anchorage	200	10J	12.0		43,992	617	1,015	35,461	81,085	16,604
08-5066	Comm Veh Ci II	FT	A	GP	Anchorage	200	15F / G	12.0		59,631	848	2,236	41,706	104,421	13,768
08-5067	Comm Veh Ci III	FT	A	GP	Anchorage	200	16A / B	12.0		52,738	723	0	38,324	91,785	11,932
08-5068	Comm Veh Ci II	FT	A	GP	Anchorage	200	15C / D	12.0		53,703	791	4,027	40,174	98,695	12,830
08-5069	Comm Veh Ci II	FT	A	GP	Tok	200	15O / P	12.0		72,950	1,075	5,463	47,834	127,322	16,552
08-5070	Accounting Technician I	FT	A	GP	Anchorage	200	12D / E	12.0		43,929	602	0	35,062	79,593	15,878
08-5071	Comm Veh Ci I	FT	A	GP	Anchorage	200	13A / B	12.0		43,108	591	0	34,758	78,457	10,199
08-5072	Comm Veh Ci I	FT	A	GP	Fairbanks	203	13A / B	12.0		44,402	608	0	35,237	80,247	10,432
08-5075	Comm Veh Ci I	FT	A	GP	Fairbanks	203	13B / C	12.0		45,377	622	0	35,598	81,597	10,608
08-5076	Comm Veh Ci II	FT	A	GP	Fairbanks	203	15C / D	12.0		53,913	739	0	38,760	93,412	12,144
08-5077	Comm Veh Ci II	FT	A	GP	Fairbanks	203	15E / F	12.0		57,637	834	3,211	41,328	103,010	13,391
08-5080	Office Assistant II	FT	A	GP	Anchorage	200	10C / D	12.0		38,130	534	864	33,234	72,762	59,866
08-5082	Comm Veh Ci III	FT	A	GP	Tok	200	16D / E	12.0		58,578	832	2,157	41,287	102,854	13,371
08-5083	Comm Veh Ci III	FT	A	GP	Fairbanks	203	16F / G	12.0		64,610	918	2,385	43,605	111,518	14,497
08-5084	Comm Veh Ci I	FT	A	GP	Anchorage	200	13B / C	12.0		45,084	618	0	35,489	81,191	10,555
08-5086	Comm Veh Ci II	FT	A	GP	Anchorage	200	15A / B	12.0		49,680	681	0	37,192	87,553	11,382
08-5087	Comm Veh Ci II	FT	A	GP	Anchorage	200	15A / B	12.0		48,558	665	0	36,776	85,999	11,180
08-5091	Comm Veh Ci II	FT	A	GP	Fairbanks	203	15B / C	12.0		52,638	741	1,447	38,823	93,649	12,174
08-5092	Office Assistant II	FT	A	GP	Anchorage	200	10B / C	12.0		37,255	522	836	32,899	71,512	35,756

Note: If a position is split, an asterisk (*) will appear in the Split/Count column. If the split position is also counted in the component, two asterisks (**) will appear in this column. [No valid job title] appearing in the Job Class Title indicates that the PCN has an invalid class code or invalid range for the class code effective date of this scenario.

Personal Services Expenditure Detail
Department of Transportation/Public Facilities

Scenario: FY2022 Governor (17280)
Component: Measurement Standards & Commercial Vehicle Compliance (2332)
RDU: Administration and Support (333)

PCN	Job Class Title	Time Status	Retire Code	Barg Unit	Location	Salary Sched	Range / Step	Comp Months	Split / Count	Annual Salaries	COLA	Premium Pay	Annual Benefits	Total Costs	UGF Amount
08-5095	Wm Inspect Trn	FT	A	GP	Anchorage	200	12B / C	12.0		41,782	624	3,772	35,664	81,842	0
08-5096	Wm Inspect Trn	FT	A	GP	Anchorage	200	12B / C	12.0		42,237	623	3,249	35,638	81,747	0
08-5097	Comm Veh Ci II	FT	A	GP	Fairbanks	203	15C / D	12.0		54,576	748	0	39,005	94,329	7,447
12-1758	Comm Veh Ci IV	FT	A	SS	Fairbanks	203	17O / P	12.0		88,374	0	0	51,564	139,938	13,183
12-1760	Comm Veh Ci II	FT	A	GP	Sterling	200	15L / M	12.0		66,272	908	0	43,337	110,517	14,367
12-1761	Comm Veh Ci I	FT	A	GP	Anchorage	200	13A / B	12.0		43,544	597	0	34,919	79,060	10,278
25-0050	Comm Veh Ci IV	FT	A	GP	Anchorage	200	17C / D	12.0		61,314	840	0	41,501	103,655	15,548
25-3366	Comm Veh Ci V	FT	A	SS	Anchorage	200	19A / B	12.0		70,460	0	0	44,929	115,389	15,001
25-3369	Comm Veh Ci II	FT	A	GP	Anchorage	200	15A / B	12.0		49,979	685	0	37,303	87,967	11,436
25-3370	Comm Veh Ci III	FT	A	GP	Fairbanks	203	16J	12.0		68,523	939	0	44,171	113,633	14,772
25-3371	Grants Administrator III	FT	A	GP	Anchorage	200	19A / B	12.0		65,994	904	0	43,235	110,133	21,723
25-3372	Comm Veh Ci I	FT	A	GP	Anchorage	200	13C / D	12.0		45,726	627	0	35,727	82,080	10,670
25-3373	Comm Veh Ci IV	FT	A	SS	Tok	200	17F / J	12.0		70,795	0	0	45,053	115,848	46,660
25-3374	Comm Veh Ci III	FT	A	GP	Anchorage	200	16A / B	12.0		52,175	742	1,941	38,835	93,693	12,180
25-3375	Comm Veh Ci II	FT	A	GP	Tok	200	15C / D	12.0		52,255	769	3,882	39,583	96,489	12,544
25-3380	State Metrologist I	FT	A	GP	Anchorage	200	16A / B	12.0		53,349	731	0	38,551	92,631	0
25-3383	Program Coordinator II	FT	A	SS	Anchorage	200	20A	12.0		72,883	0	0	45,826	118,709	11,871
25-3413	Comm Veh Ci II	FT	A	GP	Anchorage	200	15A / B	12.0		48,259	661	0	36,665	85,585	11,126
25-3483	Research Analyst I	FT	A	GP	Anchorage	200	13A / B	12.0		43,304	593	0	34,830	78,727	11,809
25-3597	Comm Veh Ci II	FT	A	GP	Tok	200	15E / F	12.0		56,482	831	4,157	41,251	102,721	13,354
25-3740	Ms Stand Spvr	FT	A	SS	Anchorage	200	18F	12.0		75,670	0	0	46,858	122,528	0
25-3793	Weights & Measures Inspector I	FT	A	GP	Anchorage	200	14A / B	12.0		45,212	691	5,202	37,464	88,569	0
25-3805	Grants Administrator II	FT	A	GP	Anchorage	200	17F / G	12.0		67,815	929	0	43,909	112,653	39,429
													Total Salary Costs:	3,506,467	
													Total COLA:	37,935	
													Total Premium Pay:	81,998	
													Total Benefits:	2,456,842	
													Total Pre-Vacancy:	6,083,242	
													Minus Vacancy Adjustment of 6.90%:	(419,542)	
													Total Post-Vacancy:	5,663,700	
													Plus Lump Sum Premium Pay:	0	
													Personal Services Line 100:	5,663,700	
Total Component Months:		720.0													

Note: If a position is split, an asterisk (*) will appear in the Split/Count column. If the split position is also counted in the component, two asterisks (**) will appear in this column. [No valid job title] appearing in the Job Class Title indicates that the PCN has an invalid class code or invalid range for the class code effective date of this scenario.

Personal Services Expenditure Detail
Department of Transportation/Public Facilities

Scenario: FY2022 Governor (17280)
Component: Measurement Standards & Commercial Vehicle Compliance (2332)
RDU: Administration and Support (333)

PCN Funding Sources:	Pre-Vacancy	Post-Vacancy	Percent
1004 General Fund Receipts	876,587	816,132	14.41%
1005 General Fund/Program Receipts	2,535,256	2,360,407	41.68%
1039 U/A Indirect Cost Recovery	115,888	107,895	1.91%
1061 Capital Improvement Project Receipts	1,899,034	1,768,063	31.22%
1215 Uniform Commercial Registration fees	656,477	611,202	10.79%
Total PCN Funding:	6,083,242	5,663,700	100.00%

Note: If a position is split, an asterisk (*) will appear in the Split/Count column. If the split position is also counted in the component, two asterisks (**) will appear in this column.
 [No valid job title] appearing in the Job Class Title indicates that the PCN has an invalid class code or invalid range for the class code effective date of this scenario.

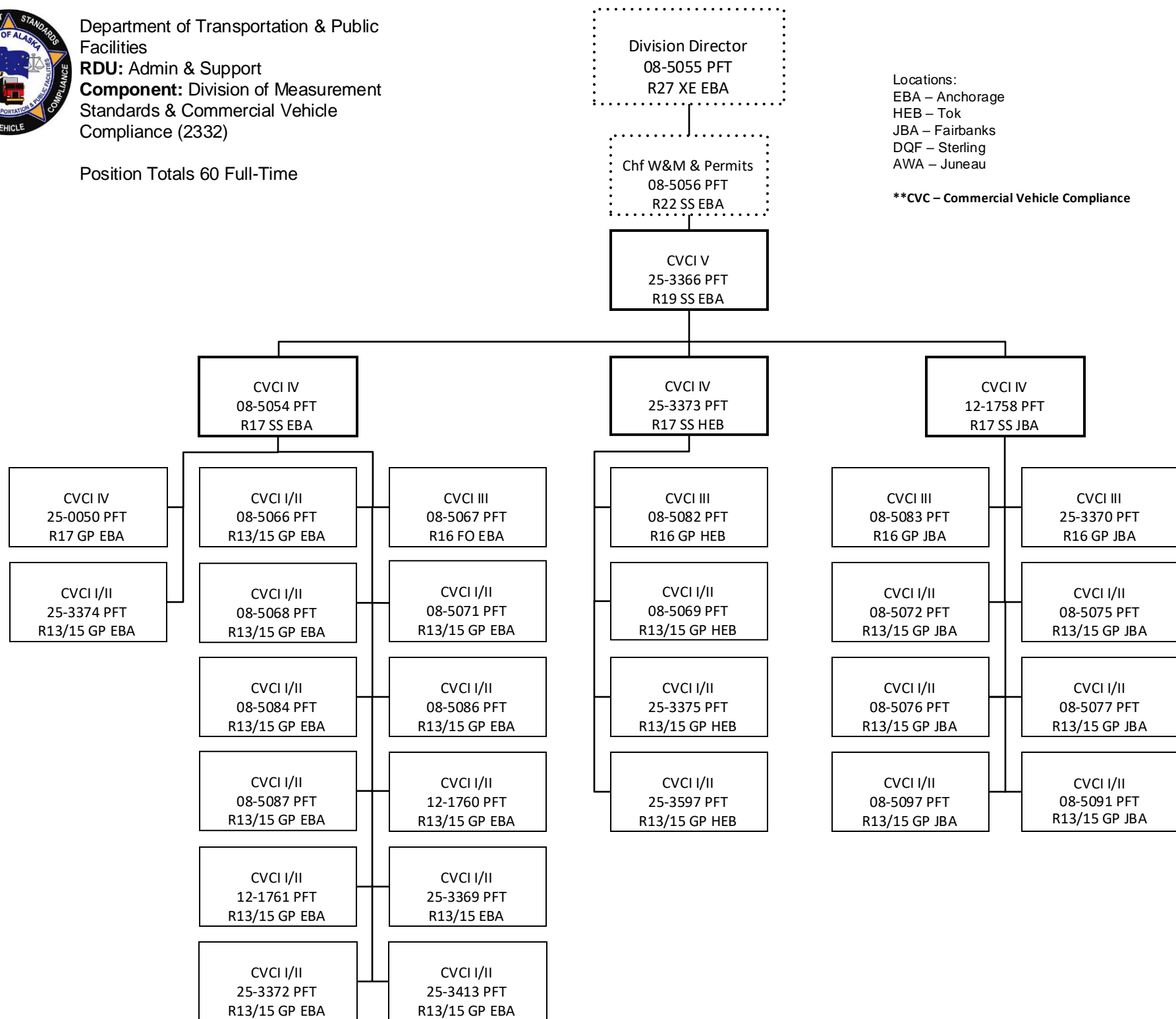


Department of Transportation & Public Facilities
RDU: Admin & Support
Component: Division of Measurement Standards & Commercial Vehicle Compliance (2332)

Position Totals 60 Full-Time

Locations:
 EBA – Anchorage
 HEB – Tok
 JBA – Fairbanks
 DQF – Sterling
 AWA – Juneau

****CVC – Commercial Vehicle Compliance**





State of Alaska
 Department of Transportation & Public Facilities
 Division of Measurement Standards
 & Commercial Vehicle Compliance
 11900 Industry Way, Bldg. M, Suite 2
 Anchorage, AK 99515
 Phone: 907-365-1210 Fax: 907-365-1220

W&M – Weights & Measure

