

# **State of Alaska FY2022 Governor's Operating Budget**

## **Department of Transportation/Public Facilities Central Design and Engineering Services Component Budget Summary**

**Component: Central Design and Engineering Services**

**Contribution to Department's Mission**

Develop, design and advertise projects that preserve and improve Alaska's transportation and public facilities infrastructure. The division also provides a wide range of technical services to the department, other state and federal agencies, local governments, utility companies, and the public.

**Core Services**

- Develop capital improvement projects (CIP) from the planning stage to final preparation of plans, specifications and estimates for construction advertising including survey, preliminary design, environmental, traffic and safety, materials, right-of-way, utilities, and design elements.
- Provide technical assistance during construction.
- Ensure environmental compliance services during construction and maintenance and operations of facilities.
- Complete and maintain airport master plans, airport layout plans, and airport certification documents.
- Provide design input for all airport leasing actions.
- Complete traffic studies and accident analysis.
- Conduct hydrological studies, materials testing, and surveying.
- Process utility, right-of-way (ROW) and traffic permits.
- Acquire and vacate right-of-way as required to support the department's mission.
- Conduct active public involvement and issue resolution efforts throughout the project development process.
- Develop CIP project bid packages through advertisement and contract award.
- Resolve bidding disputes.
- Manage the state's right-of-way per regulations and statutes.

**Major Component Accomplishments in 2020**

- Managed 289 projects (combined highway 250 and aviation 39) in various stages of development.
- Delivered a full program of \$410.0 (combined highway \$362.4 and aviation \$47.6) bid-ready projects to construction despite Covid-19 related impacts. Representative projects delivered include: Parks Highway Mile Post 48.8 to 52.3, Pittman Road to Big Lake Road Reconstruction; Seward Highway Mile Post 98 to 104, Bird to Indian Reconstruction; Seward Highway Mile Post 114 to Dimond Boulevard Pavement Preservation; Kenai Peninsula 2018 Flood Repairs (various locations), Glenn Highway Earthquake Permanent Repairs (Various Locations); Highway Safety Improvement Program (HSIP): Seward Highway Rockfall Mitigation; HSIP: Palmer-Wasilla Highway, Center Left Turn Lane Widening; Old Sterling Highway Mile Post 0-8, Pavement Preservation; Crooked Creek Airport Improvements, Bethel Parallel Runway Rehabilitation, Kasigluk Airport Improvements, and ANC Runway 25R East Safety Improvements.
- Processed 619 permits for driveways, approach roads, utilities, and other right-of-way encroachments collecting approximately \$260.0 of general program receipts revenue.
- Programs to convert street lighting to light-emitting diode fixtures to reduce electrical costs are underway throughout the region.
- Relinquished one roadway to United States Fish and Wildlife Service.
- Continue to make permanent repairs to the November 30, 2018 earthquake, including program management and design and construction of permanent repair project for about half of the 20-25 permanent repair projects. Representative projects include Emergency Embankment and Drainage Repairs; Glenn Highway at Mirror Lake, Glenn/Parks Interchange; Seward Highway Mile Post 50; Mat-Su Borough Road Repairs, and Knik River Road Mile Post 10.5.

**Key Component Challenges**

- Increased volume and complexity of utility relocations continues to exceed both the department's and utility companies' ability to deliver, resulting in delays to construction despite increased coordination and effort.

- Lack of an automated utility permit application system and utility information management system identifying the location of installed utilities continues to cause delays in permitting and project development.
- Insufficient staff and resources in federal agencies to issue permits, collect revenue and conduct reviews for construction projects.
- Difficulty generating interest and finding qualified applicants to fill the mandatory Review Appraiser role for ROW acquisition.
- Recent changes in federal regulations has precluded the timely acquisition of native allotment lands in Bureau of Indian Affairs trust status that are necessary for improvements to rural airports and roads.
- There are many state-owned roads that have no ROW mapping causing hours of research to determine if there is ROW and its width.
- Efficient easy transfer of management authority of state-owned land between Department of Natural Resources and Department of Transportation and Public Facilities (DOT&PF).
- Federal safety funds are restricted from use for enforcement support in Safety Corridors. Yet enforcement is nationally recognized alongside education and engineering as critical to reducing serious injury and death by nearly half (as shown in Central Region Safety Corridor Audits).
- Central Region has over 60 percent of Alaska's serious injury crashes and population. It also has the top ten bottlenecks for congestion in the state.
- Freight speeds on older roads between ports and cities currently move at 25 to 35 MPH, which is Grade F nationally.

### **COVID-19 Response and Telework Challenges**

- Purchasing the necessary headsets, microphones, and cameras to enable effective remote meetings continues to be a challenge, with high demand and long delays between order and delivery.
- On-boarding new employees, mentoring, and team building.
- Learning to adapt to technology for meetings.
- Tracking and transmitting paper files to remote locations for documents that require original signatures and notarizations of those signatures.

### **Significant Changes in Results to be Delivered in FY2022**

- Pre-construction activities over this next year for several large projects (including Seward Highway Mile Post 75-90 Phase II, Seward Highway, O'Malley to Dimond, and Sterling Highway Mile Post 45-60) will shift many federal National Highway System resources from a pavement preservation focus to reconstruction.
- Central Region maintains steady and ongoing year by year reductions in deaths and injuries regardless of traffic and population increases. Supporting this effort, Central Region has begun full redesign of several of the worst road segments to reduce pedestrian, and other vulnerable user crashes along all top-ranking state roads by 20 percent or more. These projects are active in design, but design delivery of these projects is greater than one year.

### **Statutory and Regulatory Authority**

AS 02.15, Alaska Aeronautics Act of 1949

AS 08.48, Architects, Engineers, Land Surveyors, and Landscape Architects

AS 08.87, Real Estate Appraisers

AS 19, Highways and Ferries

AS 29.60, Municipal Government State Programs

AS 30.30, Navigation, Harbors, Shipping, and Transportation Facilities, Abandoned and Derelict Vessels

AS 34.60, Property, Relocation Assistance and Real Property Acquisition Practices

AS 35, Public Buildings, Works, and Improvements

AS 36, Public Contracts

17 AAC 15 Transportation and Public Facilities

CFR 14 Aeronautics

CFR 15 Environment

CFR 16 Environment

CFR 23 Highways

CFR 33 Environment  
CFR 41 Contracts  
CFR 42 Environment/ADA  
CFR 43 Lands  
CFR 49 Transportation

Contact Information
<p><b>Contact:</b> Wolfgang Junge, P.E., Central Region Director <b>Phone:</b> (907) 269-0770 <b>E-mail:</b> wolfgang.junge@alaska.gov</p>

Central Design and Engineering Services Personal Services Information				
Authorized Positions			Personal Services Costs	
	FY2021 Management Plan	FY2022 Governor		
Full-time	164	164	Annual Salaries	15,172,568
Part-time	15	15	COLA	145,131
Nonpermanent	7	7	Premium Pay	430,025
			Annual Benefits	9,027,404
			<i>Less 6.77% Vacancy Factor</i>	<i>(1,676,328)</i>
			Lump Sum Premium Pay	0
<b>Totals</b>	<b>186</b>	<b>186</b>	<b>Total Personal Services</b>	<b>23,098,800</b>

Position Classification Summary					
Job Class Title	Anchorage	Fairbanks	Juneau	Others	Total
Administrative Assistant I	2	0	0	0	2
Administrative Assistant III	1	0	0	0	1
Administrative Officer I	1	0	0	0	1
College Intern I	1	0	0	0	1
College Intern II	2	0	0	0	2
College Intern III	2	0	0	0	2
College Intern IV	1	0	0	0	1
Drafting Technician III	7	0	0	0	7
Eia Mgr I	1	0	0	0	1
Electrical Engineer	1	0	0	0	1
Engineer/Architect I	19	0	0	0	19
Engineer/Architect II	7	0	0	0	7
Engineer/Architect III	10	0	0	0	10
Engineer/Architect IV	6	0	0	0	6
Engineer/Architect V	1	0	0	0	1
Engineering Assistant I	4	0	0	0	4
Engineering Assistant II	23	0	0	0	23
Engineering Assistant III	30	0	0	0	30
Engineering Geologist I	1	0	0	0	1
Engineering Geologist II	1	0	0	0	1
Env Imp Any II	4	0	0	0	4
Env Imp Any III	6	0	0	0	6
Environmental Impact Analyst I	2	0	0	0	2
Gis Analyst II	1	0	0	0	1
Land Survey Manager I	1	0	0	0	1
Land Surveyor I	3	0	0	0	3
Land Surveyor II	1	0	0	0	1
Mlt Jrny	3	0	0	0	3
Mtlb Foreman	1	0	0	0	1
Mtlb Subjrny I	1	0	0	0	1
Mtlb Subjrny II	3	0	0	0	3
Mtlb Subjrny IV	1	0	0	0	1
Office Assistant I	1	0	0	0	1
Office Assistant II	2	0	0	0	2
Regional Engineering Geologist	1	0	0	0	1
Right-Of-Way Agent I	3	0	0	0	3

<b>Position Classification Summary</b>					
<b>Job Class Title</b>	<b>Anchorage</b>	<b>Fairbanks</b>	<b>Juneau</b>	<b>Others</b>	<b>Total</b>
Right-Of-Way Agent II	7	0	0	0	7
Right-Of-Way Agent III	8	0	0	0	8
Right-Of-Way Agent IV	3	0	0	0	3
Right-Of-Way Assistant	2	0	0	0	2
Survey Lead	3	0	0	0	3
Survey, Journey	3	0	0	0	3
Survey, Sub-Journey II	1	0	0	0	1
Tech Eng/Arch I	4	0	0	0	4
<b>Totals</b>	<b>186</b>	<b>0</b>	<b>0</b>	<b>0</b>	<b>186</b>

**Component Detail All Funds**  
**Department of Transportation/Public Facilities**

**Component:** Central Design and Engineering Services (2298)  
**RDU:** Design, Engineering and Construction (526)

Non-Formula Component

	FY2020 Actuals	FY2021 Conference Committee	FY2021 Authorized	FY2021 Management Plan	FY2022 Governor	FY2021 Management Plan vs FY2022 Governor	
71000 Personal Services	21,085.3	23,143.7	23,143.7	23,143.7	23,098.8	-44.9	-0.2%
72000 Travel	5.8	31.3	22.4	22.4	22.4	0.0	0.0%
73000 Services	827.6	609.6	609.6	609.6	994.7	385.1	63.2%
74000 Commodities	200.4	159.9	159.9	159.9	159.9	0.0	0.0%
75000 Capital Outlay	182.4	5.0	5.0	5.0	5.0	0.0	0.0%
77000 Grants, Benefits	0.0	0.0	0.0	0.0	0.0	0.0	0.0%
78000 Miscellaneous	0.0	0.0	0.0	0.0	0.0	0.0	0.0%
<b>Totals</b>	<b>22,301.5</b>	<b>23,949.5</b>	<b>23,940.6</b>	<b>23,940.6</b>	<b>24,280.8</b>	<b>340.2</b>	<b>1.4%</b>
<b>Fund Sources:</b>							
1001 CBR Fund (UGF)	0.0	26.7	26.7	26.7	0.0	-26.7	-100.0%
1004 Gen Fund (UGF)	106.6	80.1	80.1	80.1	106.8	26.7	33.3%
1005 GF/Prgm (DGF)	284.4	571.7	571.7	571.7	575.4	3.7	0.6%
1007 I/A Rcpts (Other)	13.2	39.7	39.7	39.7	40.0	0.3	0.8%
1061 CIP Rcpts (Other)	21,897.3	23,231.3	23,222.4	23,222.4	23,558.6	336.2	1.4%
<b>Unrestricted General (UGF)</b>	<b>106.6</b>	<b>106.8</b>	<b>106.8</b>	<b>106.8</b>	<b>106.8</b>	<b>0.0</b>	<b>0.0%</b>
<b>Designated General (DGF)</b>	<b>284.4</b>	<b>571.7</b>	<b>571.7</b>	<b>571.7</b>	<b>575.4</b>	<b>3.7</b>	<b>0.6%</b>
<b>Other Funds</b>	<b>21,910.5</b>	<b>23,271.0</b>	<b>23,262.1</b>	<b>23,262.1</b>	<b>23,598.6</b>	<b>336.5</b>	<b>1.4%</b>
<b>Federal Funds</b>	<b>0.0</b>	<b>0.0</b>	<b>0.0</b>	<b>0.0</b>	<b>0.0</b>	<b>0.0</b>	<b>0.0%</b>
<b>Positions:</b>							
Permanent Full Time	166	166	166	164	164	0	0.0%
Permanent Part Time	15	15	15	15	15	0	0.0%
Non Permanent	6	7	7	7	7	0	0.0%

**Change Record Detail - Multiple Scenarios with Descriptions**  
**Department of Transportation/Public Facilities**

**Component:** Central Design and Engineering Services (2298)

**RDU:** Design, Engineering and Construction (526)

Scenario/Change Record Title	Trans Type	Totals	Personal Services	Travel	Services	Commodities	Capital Outlay	Grants, Benefits	Miscellaneous	Positions		NP
										PFT	PPT	
<b>***** Changes From FY2021 Conference Committee To FY2021 Authorized *****</b>												
<b>Conference Committee</b>												
	ConfCom	23,949.5	23,143.7	31.3	609.6	159.9	5.0	0.0	0.0	166	15	7
1001 CBR Fund		26.7										
1004 Gen Fund		80.1										
1005 GF/Prgm		571.7										
1007 I/A Rcpts		39.7										
1061 CIP Rcpts		23,231.3										
<b>Eliminate Restoration of Non-UGF Travel Reductions from FY2020</b>												
	Veto	-8.9	0.0	-8.9	0.0	0.0	0.0	0.0	0.0	0	0	0
1061 CIP Rcpts		-8.9										
This is a legislative restoration of previous year vetoes. Due to the COVID-19 Travel Mandate, the Department will continue to manage with available funds.												
<b>Subtotal</b>		<b>23,940.6</b>	<b>23,143.7</b>	<b>22.4</b>	<b>609.6</b>	<b>159.9</b>	<b>5.0</b>	<b>0.0</b>	<b>0.0</b>	<b>166</b>	<b>15</b>	<b>7</b>

<b>***** Changes From FY2021 Authorized To FY2021 Management Plan *****</b>												
<b>Transfer Survey Inst Tech II (25-0251) and Survey Inst Tech Tr I/II (25-0252) to Stwd Aviation for Program Coordination</b>												
	Trout	0.0	0.0	0.0	0.0	0.0	0.0	0.0	0.0	-2	0	0

The Survey Instrument Lab (SIL) is a two-person shared service within the department that acts as a warehouse and repair station for all Department of Transportation and Public Facilities surveying systems and equipment. The SIL is currently located in the Central Region Design and Engineering Services component. With the introduction of unmanned aircraft systems and the use in surveying, Statewide Aviation has become very involved in the lab's operation. A transfer to Statewide Aviation will ensure program compliance and inter-agency coordination.

Positions to be transferred:

Full-time Survey Instrument Technician II (25-0251), range 17, located in Anchorage  
 Full-time Survey Instrument Technician Trainee I/II (25-0252), range 14/16, located in Anchorage

<b>Subtotal</b>		<b>23,940.6</b>	<b>23,143.7</b>	<b>22.4</b>	<b>609.6</b>	<b>159.9</b>	<b>5.0</b>	<b>0.0</b>	<b>0.0</b>	<b>164</b>	<b>15</b>	<b>7</b>
<b>***** Changes From FY2021 Management Plan To FY2022 Governor *****</b>												
<b>FY2022 Salary Adjustments</b>												
	SalAdj	138.8	138.8	0.0	0.0	0.0	0.0	0.0	0.0	0	0	0
1005 GF/Prgm		3.7										
1007 I/A Rcpts		0.3										
1061 CIP Rcpts		134.8										

FY2022 1% COLA for ASE/General Government (GG/GP/GY/GZ): \$138.8.



**Change Record Detail - Multiple Scenarios with Descriptions**  
**Department of Transportation/Public Facilities**

**Component:** Central Design and Engineering Services (2298)

**RDU:** Design, Engineering and Construction (526)

Scenario/Change Record Title	Trans Type	Totals	Personal Services	Travel	Services	Commodities	Capital Outlay	Grants, Benefits	Miscellaneous	Positions		NP
										PFT	PPT	
<b>Transfer from Human Resources to Fund Employee Based Rates - DOPLR/IRIS HRM</b>												
1061 CIP Rcpts	Trin	112.7	0.0	0.0	112.7	0.0	0.0	0.0	0.0	0	0	0
Transfer from Human Resources component to fund Division of Personnel and Labor Relations and Integrated Resource Information System Human Resource Management rates which have been incorporated into individual positions.												
<b>Transfer from Information Systems and Services for Employee Based Rates Funding - OIT</b>												
1061 CIP Rcpts	Trin	272.4	0.0	0.0	272.4	0.0	0.0	0.0	0.0	0	0	0
Transfer from Information Systems and Services component to cover Office of Information Technology rates which have been incorporated into individual positions.												
<b>Transfer to Statewide Aviation to Fund Survey Instrument Lab Positions</b>												
1061 CIP Rcpts	Trout	-183.7	-183.7	0.0	0.0	0.0	0.0	0.0	0.0	0	0	0
Transfer capital improvement project receipt authority from personal services line in Central Design and Engineering Services to fund Survey Instrument Technician II (25-0251) and Survey Instrument Technician Trainee I/II (25-0252) which were transferred to Statewide Aviation during FY2021 Management Plan.												
<b>Fund Source Adjustment of CBRF to UGF</b>												
1001 CBR Fund	FndChg	-26.7	0.0	0.0	0.0	0.0	0.0	0.0	0.0	0	0	0
1004 Gen Fund		26.7										
Replace Constitutional Budget Reserve Fund (CBRF) used as a one-time funding mechanism in FY2021.												
<b>Totals</b>		<b>24,280.8</b>	<b>23,098.8</b>	<b>22.4</b>	<b>994.7</b>	<b>159.9</b>	<b>5.0</b>	<b>0.0</b>	<b>0.0</b>	<b>164</b>	<b>15</b>	<b>7</b>

**Line Item Detail (1676)**  
**Department of Transportation/Public Facilities**  
**Travel**

**Component:** Central Design and Engineering Services (2298)

Line Number	Line Name		FY2020 Actuals	FY2021 Management Plan	FY2022 Governor
2000	Travel		5.8	22.4	22.4
Object Class	Servicing Agency	Explanation	FY2020 Actuals	FY2021 Management Plan	FY2022 Governor
<b>2000 Travel Detail Totals</b>			<b>5.8</b>	<b>22.4</b>	<b>22.4</b>
2000	In-State Employee Travel	The Preconstruction Engineer, section chiefs, and functional managers of Preliminary Design and Environmental, Highway and Aviation Design, Materials, Utilities, Traffic, Right-of-Way travel for administration and coordination of projects, field reviews, permit inspections, surveys, staff meetings, hearings, training and conferences. This includes lodging, meals, and incidentals in association with the above travel.	3.5	10.1	16.1
2002	Out of State Employee Travel	Out of state travel and per diem for division/section chiefs or other employees. Travel is usually for administrative, conventions, meetings, and training not available in-state.	2.3	12.3	6.3

**Line Item Detail (1676)**  
**Department of Transportation/Public Facilities**  
**Services**

**Component:** Central Design and Engineering Services (2298)

Line Number	Line Name		FY2020 Actuals	FY2021 Management Plan	FY2022 Governor
3000	Services		827.6	609.6	994.7
Object Class	Servicing Agency	Explanation	FY2020 Actuals	FY2021 Management Plan	FY2022 Governor
<b>3000 Services Detail Totals</b>			<b>827.6</b>	<b>609.6</b>	<b>994.7</b>
3000	Education Services	Training services and/or conference fees, membership fees, and employee tuition (excluding Information Technology).	23.1	30.0	30.0
3001	Financial Services	Credit card processing fees for permits paid for by credit card: driveway permits, encroachment permits, lane closure permits, property management permits for use of rights-of way, etc.	0.2	1.2	1.2
3003	Information Technology	Information technology (IT) training, IT consulting, IT equipment leases, software licensing, and software maintenance primarily for upgrades of AutoCAD licenses and aviation building network upgrades. Includes Microsoft Enterprise Agreement.	133.7	140.0	140.0
3004	Telecommunications	Long distance, local phone service, data communication, and cellular service provided by vendors.	9.1	10.0	10.0
3005	Health Services	Ergonomic assessment.	1.7	0.2	0.2
3006	Delivery Services	Postage, courier and freight expense.	23.0	24.0	24.0
3007	Advertising and Promotions	Advertising and legal notices for non-project specific publications.	0.5	1.0	1.0
3008	Utilities	Utility expenses for property managed by the Right-of-Way section.	5.3	1.5	1.5

**Line Item Detail (1676)**  
**Department of Transportation/Public Facilities**  
**Services**

**Component:** Central Design and Engineering Services (2298)

Object Class	Servicing Agency	Explanation	FY2020 Actuals	FY2021 Management Plan	FY2022 Governor
<b>3000 Services Detail Totals</b>			<b>827.6</b>	<b>609.6</b>	<b>994.7</b>
3009	Structure/Infrastructure/Land	Expenses for snow removal, janitorial, lawn care, and other services for property managed by the Right-of-Way section.	3.4	1.0	1.0
3010	Equipment/Machinery	Maintenance agreements for four fax machines; five Sharp copiers in: Preliminary and Engineering Design Services; Aviation and Highway Design; Right-of-Way, Traffic and Utilities; and repairs to survey and materials testing equipment.	90.2	39.0	39.0
3011	Other Services	Safety Services, copier click fees for excess copies, and US Travel Fee.	12.9	5.0	5.0
3011	Other Services	Program Management/Consulting.	0.0	10.0	10.0
3017	Inter-Agency Information Technology Non-Telecommunications	Admin - Department-wide Computer services provided by the Department of Administration, such as central server, data storage, printing, network services, open connect, and task order system.	205.2	150.0	422.4
3018	Inter-Agency Information Technology Telecommunications	Admin - Department-wide Telecommunication services provided by the Department of Administration such as basic telephone services, equipment and features, dedicated voice/data line service, statewide paging, two-way radio, and video conference.	73.4	60.0	60.0
3021	Inter-Agency Mail	Admin - Department-wide Chargeback fees for central mail services such as mailing vendor payments and payroll warrants.	1.1	1.0	1.0
3022	Inter-Agency Human Resources	Admin - Department-wide Chargeback fees for human resource services such as labor relations, position classification and payroll processing.	0.0	0.0	112.7

**Line Item Detail (1676)**  
**Department of Transportation/Public Facilities**  
**Services**

**Component:** Central Design and Engineering Services (2298)

Object Class		Servicing Agency	Explanation	FY2020 Actuals	FY2021 Management Plan	FY2022 Governor
<b>3000 Services Detail Totals</b>				<b>827.6</b>	<b>609.6</b>	<b>994.7</b>
3024	Inter-Agency Legal	Law - Department-wide	Legal services provided by the Department of Law.	1.9	5.0	5.0
3026	Inter-Agency Insurance	Admin - Department-wide	Risk Management expense for Property/Casualty Insurance for Right of Way Properties.	9.5	5.0	5.0
3027	Inter-Agency Financial	Admin - Department-wide	Chargeback fee for HRM/IRIS/ALDER.	66.8	21.1	21.1
3028	Inter-Agency Americans with Disabilities Act Compliance	Admin - Department-wide	Chargeback fees for the statewide coordinator for the Americans with Disabilities Act (ADA).	1.5	0.5	0.5
3029	Inter-Agency Education/Training	Admin - Department-wide	Alaska Statutes.	0.3	0.1	0.1
3029	Inter-Agency Education/Training	E&ED - Department-wide	Procurement Training.	0.0	0.1	0.1
3031	Inter-Agency Construction		Survey instrument fee.	0.8	0.4	0.4
3036	Inter-Agency Safety		Badge fees for Ted Steven's Anchorage International Airport.	1.1	0.5	0.5
3037	State Equipment Fleet	Trans - State Equipment Fleet (2791)	State Equipment Fleet operating and replacement fees, credit card fuel, and vehicle maintenance and repairs. Budgeted amounts, if any, are for operating budget vehicles only; prior year actuals amount includes the cost of capital improvement project (CIP) vehicles, which are funded through an unbudgeted reimbursable services agreement.	82.6	0.0	0.0
3038	Inter-Agency Management/Consulting	Admin - Department-wide	Shared Services of Alaska accounts payable and travel and expense activities.	71.4	60.0	60.0
3038	Inter-Agency Management/Consulting	Gov - Department-wide	Office of Management and Budget - Budget Analyst support.	2.5	0.0	0.0
3038	Inter-Agency Management/Consulting	Trans - Central Design & Eng Svcs (2298)	Construction staff support to the Right-of-Way section to perform field	0.0	30.0	30.0

**Line Item Detail (1676)**  
**Department of Transportation/Public Facilities**  
**Services**

**Component:** Central Design and Engineering Services (2298)

Object Class	Servicing Agency	Explanation	FY2020 Actuals	FY2021 Management Plan	FY2022 Governor
<b>3000 Services Detail Totals</b>			<b>827.6</b>	<b>609.6</b>	<b>994.7</b>
		inspections for Right-of-Way permits issued by Central Region and review of traffic control plans not funded by a construction project.			
3038	Inter-Agency Management/Consulting	Trans - Central Design & Eng Svcs (2298) Construction staff support to the Utilities section for review of traffic control plans not funded by a construction project.	0.0	8.0	8.0
3039	DOT/PF Time & Equipment System	Vehicle usage billed to the operating budget based on established rates and actual usage of vehicles.	6.4	5.0	5.0

**Line Item Detail (1676)**  
**Department of Transportation/Public Facilities**  
**Commodities**

**Component:** Central Design and Engineering Services (2298)

Line Number	Line Name		FY2020 Actuals	FY2021 Management Plan	FY2022 Governor
4000	Commodities		200.4	159.9	159.9
Object Class	Servicing Agency	Explanation	FY2020 Actuals	FY2021 Management Plan	FY2022 Governor
<b>4000 Commodities Detail Totals</b>			<b>200.4</b>	<b>159.9</b>	<b>159.9</b>
4000	Business	Consumable office supplies, subscriptions, furniture and small tools with a value of less than \$5,000 per item used in daily operations.	81.4	90.8	90.8
4000	Business	Computers, printers and small printers. The component is on a four-year computer replacement schedule for a permanent full-time staff of 172. Computers for administrative staff are approximately \$1.5 each, and \$2.0 for engineering staff.	78.9	59.0	59.0
4003	Scientific and Medical	Laboratory and non-laboratory supply expenditures charged to the Central Region Materials Lab Cost Allocation Plan.	11.2	0.0	0.0
4004	Safety	Safety related supplies	1.0	0.0	0.0
4013	Lube Oils/Grease/Solvents	Lube oils/grease/solvents supplies	0.6	0.0	0.0
4014	Bottled Gas	Bottled Gas.	0.0	0.1	0.1
4015	Parts and Supplies	Parts and Supplies for the Central Region Materials and Survey Instrument Labs Cost Allocation Plans.	22.4	0.0	0.0
4019	Small Tools/Minor Equipment	Repair and maintenance supplies include small tools, equipment fuel, paint, survey markers, and parts used by materials, geology and survey crews.	4.9	10.0	10.0

**Line Item Detail (1676)**  
**Department of Transportation/Public Facilities**  
**Capital Outlay**

**Component:** Central Design and Engineering Services (2298)

Line Number	Line Name		FY2020 Actuals	FY2021 Management Plan	FY2022 Governor
5000	Capital Outlay		182.4	5.0	5.0
Object Class	Servicing Agency	Explanation	FY2020 Actuals	FY2021 Management Plan	FY2022 Governor
<b>5000 Capital Outlay Detail Totals</b>			<b>182.4</b>	<b>5.0</b>	<b>5.0</b>
5002	Structures and Infrastructure	Capital Equipment expense for the Central Region Materials and Survey Instrument Lab Cost Allocation Plans.	39.2	0.0	0.0
5004	Equipment	Central Region Design and Engineering Services allocated portion of equipment and capital upgrades to the Aviation Building network. Capital Equipment expense for the Central Region Materials and Survey Instrument Lab Cost Allocation Plans.	143.2	5.0	5.0



**Revenue Detail (1681)**  
**Department of Transportation/Public Facilities**

**Component:** Central Design and Engineering Services (2298)

Revenue Type (OMB Fund Code) Revenue Source	Component	Comment	FY2020 Actuals	FY2021 Management Plan	FY2022 Governor
<b>5005 GF/Prgm (1005 GF/Prgm)</b>			<b>284.4</b>	<b>571.7</b>	<b>575.4</b>
5103 Program Receipts - Charges for Services		Program Receipts	-1.7	0.0	0.0
5111 Program Receipts Transportation - Charges for Services		Receipts from issuing utility permits in the state's right-of-way and for inspection of utility installations. Receipts for the sale and lease of excess right-of-way and permits for encroachments in the state right-of-way. Receipts include charges assessed to the owners of illegally place signs within the State's right-of-way. These signs are removed and stored. When they are identified, they are returned to the owner after the owner has paid the established fee. Includes receipts collected from the Tourist Oriented Destination Signs (TODS) Program, per AS 19.05.070-100 application fee collected to process request for permit for encroachments in the right-of-way of a highway, per CH61, SLA 05 (HB279).	221.4	323.9	323.9
5113 Program Receipts Natural Resources - Rent and Royalties		Right-of-way.	64.7	247.8	251.5
<b>5007 I/A Rcpts (1007 I/A Rcpts)</b>			<b>13.2</b>	<b>39.7</b>	<b>40.0</b>
5301 Inter-Agency Receipts	NatRes - Department-wide	Reimbursable services agreement based on Design Right-of-way services associated with review of permit applications, permitting modifications requests, and follow-up tasks necessary for the Pebble Gold Project.	-0.7	0.0	0.0

**Revenue Detail (1681)**  
**Department of Transportation/Public Facilities**

**Component:** Central Design and Engineering Services (2298)

<b>Revenue Type (OMB Fund Code)</b> <b>Revenue Source</b>	<b>Component</b>	<b>Comment</b>	<b>FY2020 Actuals</b>	<b>FY2021 Management Plan</b>	<b>FY2022 Governor</b>
5301 Inter-Agency Receipts	Trans - Central Design & Eng Svcs (2298)	Reimbursement from any state agency's operating budget for services provided. Typical requests are for professional construction management. Specific agreements and departments served vary from year to year.	0.0	36.7	37.0
5301 Inter-Agency Receipts	Trans - Central Highways and Aviation (564)	Reimbursable services agreement from Central Region Highways and Aviation for professional services in the environmental field.	13.9	3.0	3.0
5301 Inter-Agency Receipts	NatRes - Department-wide	Reimbursable services agreement with Department of Natural Resources for Central Region Fire Support.	0.0	0.0	0.0
<b>5061 CIP Rcpts (1061 CIP Rcpts)</b>			<b>21,897.3</b>	<b>23,222.4</b>	<b>23,558.6</b>
5351 Capital Improvement Project Inter-Agency		Capital improvement project receipts for work in direct support of capital projects.	18,851.7	19,403.4	19,342.3
5351 Capital Improvement Project Inter-Agency		Recovery of indirect costs from the capital budget via the department's Indirect Cost Allocation Plan (ICAP).	3,045.6	3,819.0	4,216.3
<b>6004 Gen Fund (1004 Gen Fund)</b>			<b>1.6</b>	<b>0.0</b>	<b>0.0</b>
6046 General Fund - Prior Year Reimbursement Recovery		Prior year reimbursement recovery.	1.6	0.0	0.0

**Inter-Agency Services (1682)**  
**Department of Transportation/Public Facilities**

**Component:** Central Design and Engineering Services (2298)

				FY2020 Actuals	FY2021 Management Plan	FY2022 Governor
<b>Component Totals</b>				<b>516.2</b>	<b>340.8</b>	<b>725.9</b>
With Department of Administration				429.2	297.7	682.8
With Department of Law				1.9	5.0	5.0
With Department of Education and Early Development				0.0	0.1	0.1
With Department of Transportation/Public Facilities				82.6	38.0	38.0
With Office of the Governor				2.5	0.0	0.0
<b>Object Class</b>	<b>Servicing Agency</b>	<b>Explanation</b>		FY2020 Actuals	FY2021 Management Plan	FY2022 Governor
3017	Inter-Agency Information Technology Non-Telecommunications	Admin - Department-wide	Computer services provided by the Department of Administration, such as central server, data storage, printing, network services, open connect, and task order system.	205.2	150.0	422.4
3018	Inter-Agency Information Technology Telecommunications	Admin - Department-wide	Telecommunication services provided by the Department of Administration such as basic telephone services, equipment and features, dedicated voice/data line service, statewide paging, two-way radio, and video conference.	73.4	60.0	60.0
3021	Inter-Agency Mail	Admin - Department-wide	Chargeback fees for central mail services such as mailing vendor payments and payroll warrants.	1.1	1.0	1.0
3022	Inter-Agency Human Resources	Admin - Department-wide	Chargeback fees for human resource services such as labor relations, position classification and payroll processing.	0.0	0.0	112.7
3024	Inter-Agency Legal	Law - Department-wide	Legal services provided by the Department of Law.	1.9	5.0	5.0
3026	Inter-Agency Insurance	Admin - Department-wide	Risk Management expense for Property/Casualty Insurance for Right of Way Properties.	9.5	5.0	5.0

**Inter-Agency Services (1682)**  
**Department of Transportation/Public Facilities**

**Component:** Central Design and Engineering Services (2298)

Object Class		Servicing Agency	Explanation	FY2020 Actuals	FY2021 Management Plan	FY2022 Governor
3027	Inter-Agency Financial	Admin - Department-wide	Chargeback fee for HRM/IRIS/ALDER.	66.8	21.1	21.1
3028	Inter-Agency Americans with Disabilities Act Compliance	Admin - Department-wide	Chargeback fees for the statewide coordinator for the Americans with Disabilities Act (ADA).	1.5	0.5	0.5
3029	Inter-Agency Education/Training	Admin - Department-wide	Alaska Statutes.	0.3	0.1	0.1
3029	Inter-Agency Education/Training	E&ED - Department-wide	Procurement Training.	0.0	0.1	0.1
3037	State Equipment Fleet	Trans - State Equipment Fleet (2791)	State Equipment Fleet operating and replacement fees, credit card fuel, and vehicle maintenance and repairs. Budgeted amounts, if any, are for operating budget vehicles only; prior year actuals amount includes the cost of capital improvement project (CIP) vehicles, which are funded through an unbudgeted reimbursable services agreement.	82.6	0.0	0.0
3038	Inter-Agency Management/Consulting	Admin - Department-wide	Shared Services of Alaska accounts payable and travel and expense activities.	71.4	60.0	60.0
3038	Inter-Agency Management/Consulting	Gov - Department-wide	Office of Management and Budget - Budget Analyst support.	2.5	0.0	0.0
3038	Inter-Agency Management/Consulting	Trans - Central Design & Eng Svcs (2298)	Construction staff support to the Right-of-Way section to perform field inspections for Right-of-Way permits issued by Central Region and review of traffic control plans not funded by a construction project.	0.0	30.0	30.0
3038	Inter-Agency Management/Consulting	Trans - Central Design & Eng Svcs (2298)	Construction staff support to the Utilities section for review of traffic control plans not funded by a construction project.	0.0	8.0	8.0

**Personal Services Expenditure Detail**  
**Department of Transportation/Public Facilities**

**Scenario:** FY2022 Governor (17280)  
**Component:** Central Design and Engineering Services (2298)  
**RDU:** Design, Engineering and Construction (526)

PCN	Job Class Title	Time Status	Retire Code	Barg Unit	Location	Salary Sched	Range / Step	Comp Months	Split / Count	Annual Salaries	COLA	Premium Pay	Annual Benefits	Total Costs	UGF Amount
25-0175	Administrative Officer I	FT	A	GP	Anchorage	200	17N / O	12.0		83,182	1,140	0	49,601	133,923	0
25-0224	Engineer/Architect III	FT	A	SS	Anchorage	200	25F / J	12.0		121,943	0	0	63,998	185,941	0
25-0236	Engineering Assistant III	FT	A	GP	Anchorage	200	21L	12.0		99,177	1,464	7,629	58,351	166,621	0
25-0241	Engineering Assistant III	FT	A	GP	Anchorage	200	21C	12.0		78,020	1,151	6,001	49,912	135,084	0
25-0242	Administrative Assistant III	FT	A	GP	Anchorage	200	15M / N	12.0		69,625	954	0	44,579	115,158	0
25-0249	Engineer/Architect I	FT	A	GP	Anchorage	200	22D / E	12.0		86,799	1,190	0	50,941	138,930	0
25-0378	Engineer/Architect IV	FT	A	SS	Anchorage	200	26K / L	12.0		135,045	0	0	68,851	203,896	0
25-0382	Engineer/Architect V	FT	A	SS	Anchorage	200	27R / S	12.0		174,609	0	0	81,556	256,165	114,676
25-0387	Engineer/Architect IV	FT	A	SS	Anchorage	200	26E / F	12.0		124,181	0	0	64,827	189,008	0
25-0389	Engineer/Architect IV	FT	A	SS	Anchorage	200	26P / Q	12.0		161,897	0	0	77,626	239,523	0
25-0401	Administrative Assistant I	FT	A	GP	Anchorage	200	12N / O	12.0		57,971	794	0	40,263	99,028	0
25-0402	Engineer/Architect II	FT	A	SS	Anchorage	200	23J	12.0		109,200	0	0	59,278	168,478	0
25-0404	Engineer/Architect III	FT	A	SS	Anchorage	200	25O	12.0		147,118	0	0	73,058	220,176	0
25-0407	Engineering Assistant III	FT	A	GP	Anchorage	200	21C / D	12.0		80,392	1,102	0	48,568	130,062	0
25-0413	Engineer/Architect I	FT	A	GP	Anchorage	200	22K / L	12.0		105,976	1,452	0	58,044	165,472	0
25-0414	Engineer/Architect IV	FT	A	SS	Anchorage	200	26Q / R	12.0		163,632	0	0	78,163	241,795	0
25-0416	Engineer/Architect II	FT	A	SS	Anchorage	200	23F	12.0		105,768	0	0	58,007	163,775	0
25-0421	Right-Of-Way Agent III	FT	A	GP	Anchorage	200	18G / J	12.0		74,924	1,027	0	46,542	122,493	0
25-0423	Land Survey Manager I	FT	A	SS	Anchorage	200	23P / Q	12.0		139,387	0	0	70,459	209,846	0
25-0424	Land Surveyor I	FT	A	GP	Anchorage	200	21M	12.0		102,395	1,403	0	56,717	160,515	0
25-0427	Right-Of-Way Agent I	FT	A	GP	Anchorage	200	14F / G	12.0		55,222	757	0	39,245	95,224	0
25-0429	Engineer/Architect II	FT	A	SS	Anchorage	200	23K	12.0		112,757	0	0	60,595	173,352	0
25-0433	Right-Of-Way Agent III	FT	A	GP	Anchorage	200	18J	12.0		76,050	1,042	0	46,959	124,051	0
25-0435	Engineer/Architect IV	FT	A	SS	Anchorage	200	26N	12.0		149,065	0	0	73,660	222,725	0
25-0452	Drafting Technician III	FT	A	GP	Anchorage	200	15A	12.0		48,185	660	0	36,638	85,483	0
25-0468	Office Assistant I	FT	A	GP	Anchorage	200	8C / D	12.0		33,677	462	0	31,264	65,403	0
25-0473	Right-Of-Way Agent IV	FT	A	SS	Anchorage	200	20F	12.0		86,403	0	0	50,834	137,237	0
25-0474	Right-Of-Way Agent IV	FT	A	SS	Anchorage	200	20K / L	12.0		92,622	0	0	53,137	145,759	0
25-0475	Engineering Assistant II	FT	A	GP	Anchorage	200	19B / C	12.0		66,177	977	5,083	45,185	117,422	0
25-0476	Right-Of-Way Agent III	FT	A	GP	Anchorage	200	18E / F	12.0		70,065	960	0	44,742	115,767	0
25-0477	Right-Of-Way Agent III	FT	A	GP	Anchorage	200	18J / K	12.0		77,598	1,063	0	47,533	126,194	0
25-0479	Engineering Assistant III	FT	A	GP	Anchorage	200	21G	12.0		89,291	1,318	6,868	54,408	151,885	0
25-0480	Right-Of-Way Agent III	FT	A	GP	Anchorage	200	18K / L	12.0		80,655	1,105	0	48,665	130,425	0
25-0482	Right-Of-Way Agent II	FT	A	GP	Anchorage	200	16J	12.0		66,534	912	0	43,435	110,881	0
25-0485	Right-Of-Way Agent II	FT	A	GP	Anchorage	200	16K	12.0		68,699	941	0	44,236	113,876	0
25-0486	Right-Of-Way Agent III	FT	A	GP	Anchorage	200	18F / G	12.0		72,580	995	0	45,674	119,249	0
25-0487	Drafting Technician III	FT	A	GG	Anchorage	200	15O / P	12.0		75,028	1,028	0	46,581	122,637	0
25-0488	Drafting Technician III	FT	A	GP	Anchorage	200	15G	12.0		59,631	817	0	40,878	101,326	0

Note: If a position is split, an asterisk (\*) will appear in the Split/Count column. If the split position is also counted in the component, two asterisks (\*\*) will appear in this column. [No valid job title] appearing in the Job Class Title indicates that the PCN has an invalid class code or invalid range for the class code effective date of this scenario.

**Personal Services Expenditure Detail**  
**Department of Transportation/Public Facilities**

**Scenario:** FY2022 Governor (17280)  
**Component:** Central Design and Engineering Services (2298)  
**RDU:** Design, Engineering and Construction (526)

PCN	Job Class Title	Time Status	Retire Code	Barg Unit	Location	Salary Sched	Range / Step	Comp Months	Split / Count	Annual Salaries	COLA	Premium Pay	Annual Benefits	Total Costs	UGF Amount
25-0492	Right-Of-Way Assistant	FT	A	GP	Anchorage	200	12C / D	12.0		43,478	596	0	34,895	78,969	0
25-0495	Office Assistant II	FT	A	GP	Anchorage	200	10B / C	12.0		36,896	506	0	32,457	69,859	0
25-0496	Right-Of-Way Assistant	FT	A	GP	Anchorage	200	12C / D	12.0		43,380	594	0	34,858	78,832	0
25-0497	Administrative Assistant I	FT	A	GP	Anchorage	200	12B / C	12.0		42,180	578	0	34,414	77,172	0
25-0499	Right-Of-Way Agent II	FT	A	GP	Anchorage	200	16D / E	12.0		58,052	796	0	40,293	99,141	0
25-0501	Engineering Assistant II	FT	A	GP	Anchorage	200	19F / G	12.0		75,892	1,120	5,823	49,058	131,893	0
25-0504	Tech Eng/Arch I	FT	A	GP	Anchorage	200	24M	12.0		126,126	1,728	0	65,507	193,361	0
25-0507	Engineering Assistant III	FT	A	GP	Anchorage	200	21G / J	12.0		92,879	1,367	6,868	55,737	156,851	0
25-0515	Engineering Assistant III	FT	A	GG	Anchorage	200	21O / P	12.0		113,070	1,666	8,486	63,815	187,037	0
25-0531	Engineering Assistant II	FT	A	GP	Anchorage	200	19A / B	12.0		66,012	972	4,914	45,061	116,959	0
25-0541	Engineering Assistant III	FT	A	GP	Anchorage	200	21L / M	12.0		99,713	1,471	7,629	58,550	167,363	0
25-0561	Right-Of-Way Agent I	FT	A	GP	Anchorage	200	14D / E	12.0		50,203	688	0	37,386	88,277	0
25-0590	Mlt Jrny	PT	A	LL	Anchorage	2AA	53Q	9.0		55,049	0	5,646	36,496	97,191	0
25-0598	Engineering Assistant III	FT	A	GP	Anchorage	200	21D / E	12.0		81,712	1,205	6,220	51,360	140,497	0
25-0599	Engineer/Architect I	FT	A	GP	Anchorage	200	22C	12.0		83,402	1,143	0	49,682	134,227	0
25-0605	Mtlb Subjrny II	PT	A	LL	Anchorage	2AA	57D / E	9.5		34,942	0	3,126	28,894	66,962	0
25-0612	Survey, Sub-Journey II	PT	A	LL	Anchorage	2AA	56B / C	11.0		40,370	0	3,073	33,220	76,663	0
25-0616	Engineer/Architect III	FT	A	SS	Anchorage	200	25E / F	12.0		117,629	0	0	62,400	180,029	0
25-0617	Engineer/Architect II	FT	A	GP	Anchorage	200	23K	12.0		110,370	1,513	0	59,671	171,554	0
25-0619	Engineer/Architect I	FT	A	GP	Anchorage	200	22C / D	12.0		83,782	1,148	0	49,823	134,753	0
25-0620	Engineer/Architect I	FT	A	GP	Anchorage	200	22B / C	12.0		82,979	1,137	0	49,526	133,642	0
25-0621	Eia Mgr I	FT	A	SS	Anchorage	200	21N	12.0		109,304	0	0	59,316	168,620	0
25-0623	Engineer/Architect III	FT	A	SS	Anchorage	200	25L / M	12.0		136,740	0	0	69,479	206,219	0
25-0626	Engineering Assistant II	FT	A	GP	Anchorage	200	19F	12.0		75,699	1,117	5,823	48,986	131,625	0
25-0627	Tech Eng/Arch I	FT	A	SS	Anchorage	200	24Q / R	12.0		164,094	0	0	78,305	242,399	0
25-0628	Engineering Assistant III	FT	A	GP	Anchorage	200	21O / P	12.0		111,277	1,641	8,485	63,150	184,553	0
25-0629	Engineering Assistant III	FT	A	GP	Anchorage	200	21D / E	12.0		82,979	1,222	6,220	51,830	142,251	0
25-0631	Engineer/Architect I	FT	A	GP	Anchorage	200	22N / O	12.0		114,573	1,570	0	61,228	177,371	0
25-0632	Land Surveyor II	FT	A	SS	Anchorage	200	22P	12.0		125,892	0	0	65,461	191,353	0
25-0634	Engineering Assistant III	FT	A	GP	Anchorage	200	21F / G	12.0		88,460	1,303	6,649	54,019	150,431	0
25-0635	Engineering Assistant III	FT	A	GP	Anchorage	200	21B / C	12.0		77,053	1,136	5,823	49,488	133,500	0
25-0636	Engineer/Architect III	FT	A	SS	Anchorage	200	25E / F	12.0		117,265	0	0	62,265	179,530	0
25-0638	Engineering Assistant III	FT	A	GP	Anchorage	200	21G / J	12.0		91,631	1,350	6,868	55,274	155,123	0
25-0640	Engineering Assistant III	FT	A	GP	Anchorage	200	21E / F	12.0		84,289	1,243	6,415	52,387	144,334	0
25-0643	Engineering Assistant III	FT	A	GP	Anchorage	200	21J	12.0		93,035	1,373	7,156	55,901	157,465	0
25-0644	Engineering Assistant II	FT	A	GP	Anchorage	200	19K / L	12.0		86,278	1,271	6,453	53,138	147,140	0
25-0646	Engineering Assistant II	FT	A	GP	Anchorage	200	19M	12.0		89,427	1,320	6,879	54,462	152,088	0
25-0648	Engineering Assistant III	FT	A	GP	Anchorage	200	21C	12.0		78,020	1,151	6,001	49,912	135,084	0

Note: If a position is split, an asterisk (\*) will appear in the Split/Count column. If the split position is also counted in the component, two asterisks (\*\*) will appear in this column. [No valid job title] appearing in the Job Class Title indicates that the PCN has an invalid class code or invalid range for the class code effective date of this scenario.

**Personal Services Expenditure Detail**  
**Department of Transportation/Public Facilities**

**Scenario:** FY2022 Governor (17280)  
**Component:** Central Design and Engineering Services (2298)  
**RDU:** Design, Engineering and Construction (526)

PCN	Job Class Title	Time Status	Retire Code	Barg Unit	Location	Salary Sched	Range / Step	Comp Months	Split / Count	Annual Salaries	COLA	Premium Pay	Annual Benefits	Total Costs	UGF Amount
25-0649	Engineering Assistant III	FT	A	GP	Anchorage	200	21N	12.0		106,246	1,568	8,179	61,173	177,166	0
25-0651	Engineer/Architect I	FT	A	GP	Anchorage	200	22B / C	12.0		83,064	1,138	0	49,557	133,759	0
25-0652	Engineering Assistant III	FT	A	GP	Anchorage	200	21G	12.0		89,291	1,318	6,868	54,408	151,885	0
25-0655	Engineering Assistant II	FT	A	GP	Anchorage	200	19A / B	12.0		65,755	968	4,914	44,966	116,603	0
25-0656	Engineer/Architect I	FT	A	GP	Anchorage	200	22D / E	12.0		88,104	1,207	0	51,424	140,735	0
25-0657	Engineer/Architect I	FT	A	GP	Anchorage	200	22G / J	12.0		98,836	1,354	0	55,399	155,589	0
25-0659	Engineering Assistant II	FT	A	GP	Anchorage	200	19B / C	12.0		67,542	995	5,083	45,691	119,311	0
25-0661	Engineering Assistant III	FT	A	GP	Anchorage	200	21L	12.0		99,177	1,464	7,629	58,351	166,621	0
25-0662	Engineering Assistant I	FT	A	GP	Anchorage	200	17B / C	12.0		58,297	860	4,425	42,023	105,605	0
25-0663	Env Imp Any III	FT	A	GP	Anchorage	200	19D / E	12.0		72,206	990	0	45,535	118,731	0
25-0665	Engineering Assistant III	FT	A	GP	Anchorage	200	21G / J	12.0		91,943	1,354	6,868	55,390	155,555	0
25-0667	Drafting Technician III	FT	A	GP	Anchorage	200	15A	12.0		48,185	660	0	36,638	85,483	0
25-0670	Engineer/Architect III	FT	A	SS	Anchorage	200	25L	12.0		133,661	0	0	68,338	201,999	0
25-0671	Engineer/Architect I	FT	A	GP	Anchorage	200	22B / C	12.0		81,923	1,123	0	49,135	132,181	0
25-0672	Engineer/Architect II	FT	A	SS	Anchorage	200	23M / N	12.0		122,484	0	0	64,198	186,682	0
25-0675	Engineer/Architect I	FT	A	GP	Anchorage	200	22E / F	12.0		90,520	1,240	0	52,319	144,079	0
25-0676	Engineer/Architect I	FT	A	GP	Anchorage	200	22C	12.0		83,402	1,143	0	49,682	134,227	0
25-0683	Engineering Assistant III	FT	A	GP	Anchorage	200	21B / C	12.0		77,149	1,137	5,823	49,523	133,632	0
25-0685	Engineering Assistant III	FT	A	GP	Anchorage	200	21B / C	12.0		77,633	1,144	5,823	49,702	134,302	0
25-0687	Engineer/Architect I	FT	A	GP	Anchorage	200	22G / J	12.0		97,344	1,334	0	54,847	153,525	0
25-0689	Engineering Assistant II	FT	A	GP	Anchorage	200	19E / F	12.0		74,263	1,095	5,619	48,379	129,356	0
25-0695	Right-Of-Way Agent III	FT	A	GP	Anchorage	200	18D	12.0		66,086	906	0	43,269	110,261	0
25-0702	Drafting Technician III	FT	A	GP	Anchorage	200	15G	12.0		59,631	880	4,587	42,577	107,675	0
25-0705	Drafting Technician III	FT	A	GP	Anchorage	200	15K	12.0		64,097	878	0	42,532	107,507	0
25-0706	Drafting Technician III	FT	A	GP	Anchorage	200	15B / C	12.0		51,100	700	0	37,718	89,518	0
25-0712	Right-Of-Way Agent II	FT	A	GP	Anchorage	200	16F	12.0		61,757	846	0	41,665	104,268	0
25-0715	Right-Of-Way Agent II	FT	A	GP	Anchorage	200	16C / D	12.0		55,612	762	0	39,389	95,763	0
25-0717	Engineering Assistant III	FT	A	GP	Anchorage	200	21J	12.0		93,035	1,373	7,156	55,901	157,465	0
25-0719	Right-Of-Way Agent I	FT	A	GP	Anchorage	200	14C / D	12.0		49,829	683	0	37,247	87,759	0
25-0721	Mtlb Subjrnly IV	PT	A	LL	Anchorage	2AA	54F	9.0		41,051	0	3,948	30,682	75,681	0
25-0724	Engineering Geologist I	FT	A	GP	Anchorage	200	16A	12.0		51,773	764	3,982	39,442	95,961	0
25-0725	Regional Engineering Geologist	FT	A	SS	Anchorage	200	22P	12.0		125,892	0	0	65,461	191,353	0
25-0726	Survey, Journey	PT	A	LL	Anchorage	2AA	54F	11.0		50,174	0	3,948	37,176	91,298	0
25-0733	Engineering Assistant I	FT	A	GP	Anchorage	200	17A / B	12.0		57,299	844	4,264	41,593	104,000	0
25-0736	Mtlb Foreman	PT	A	LL	Anchorage	2AA	51N	9.0		59,534	0	5,725	38,187	103,446	0
25-0738	Engineering Assistant II	FT	A	GP	Anchorage	200	19J	12.0		81,257	1,199	6,250	51,203	139,909	0
25-0741	Mtlb Subjrnly II	FT	A	LL	Anchorage	2AA	57C / D	12.0		42,065	0	3,021	35,386	80,472	0
25-0743	Gis Analyst II	PT	A	GP	Anchorage	200	17A	9.0		41,579	628	4,264	31,073	77,544	0

Note: If a position is split, an asterisk (\*) will appear in the Split/Count column. If the split position is also counted in the component, two asterisks (\*\*) will appear in this column. [No valid job title] appearing in the Job Class Title indicates that the PCN has an invalid class code or invalid range for the class code effective date of this scenario.

**Personal Services Expenditure Detail**  
**Department of Transportation/Public Facilities**

**Scenario:** FY2022 Governor (17280)  
**Component:** Central Design and Engineering Services (2298)  
**RDU:** Design, Engineering and Construction (526)

PCN	Job Class Title	Time Status	Retire Code	Barg Unit	Location	Salary Sched	Range / Step	Comp Months	Split / Count	Annual Salaries	COLA	Premium Pay	Annual Benefits	Total Costs	UGF Amount
25-0747	Engineering Assistant II	FT	A	GP	Anchorage	200	19B / C	12.0		67,178	990	5,083	45,556	118,807	0
25-0751	Env Imp Any III	FT	A	GP	Anchorage	200	19L	12.0		86,619	1,187	0	50,874	138,680	0
25-0752	Env Imp Any II	FT	A	GP	Anchorage	200	17B / C	12.0		59,543	816	0	40,845	101,204	0
25-0753	Env Imp Any III	FT	A	GP	Anchorage	200	19G	12.0		78,020	1,069	0	47,689	126,778	0
25-0755	Env Imp Any III	FT	A	GP	Anchorage	200	19G	12.0		78,020	1,069	0	47,689	126,778	0
25-0756	Env Imp Any III	FT	A	GP	Anchorage	200	19B / C	12.0		67,542	926	0	43,808	112,276	0
25-0762	Env Imp Any II	FT	A	GP	Anchorage	200	17B / C	12.0		59,456	815	0	40,813	101,084	0
25-0766	Engineering Geologist II	FT	A	GP	Anchorage	200	18A	12.0		59,631	880	4,587	42,577	107,675	0
25-0770	Engineering Assistant II	FT	A	GP	Anchorage	200	19E / F	12.0		75,368	1,110	5,619	48,788	130,885	0
25-0771	Engineer/Architect IV	FT	A	SS	Anchorage	200	26J	12.0		129,917	0	0	66,952	196,869	0
25-0791	Survey, Journey	PT	A	LL	Anchorage	2AA	54F / J	11.0		50,946	0	3,948	37,462	92,356	0
25-0792	Survey Lead	PT	A	LL	Anchorage	2AA	53N	11.0		64,261	0	5,056	42,804	112,121	0
25-0797	Engineer/Architect III	FT	A	SS	Anchorage	200	25K	12.0		129,459	0	0	66,782	196,241	0
25-0800	Engineer/Architect I	FT	A	GP	Anchorage	200	22F / G	12.0		94,166	1,290	0	53,669	149,125	0
25-0802	Engineering Assistant II	FT	A	GP	Anchorage	200	19A / B	12.0		66,012	972	4,914	45,061	116,959	0
25-0805	Engineering Assistant II	FT	A	GP	Anchorage	200	19A / B	12.0		66,012	972	4,914	45,061	116,959	0
25-0808	Engineering Assistant II	FT	A	GP	Anchorage	200	19B / C	12.0		68,088	1,003	5,083	45,893	120,067	0
25-0810	Engineering Assistant III	FT	A	GP	Anchorage	200	21B / C	12.0		77,343	1,140	5,823	49,595	133,901	0
25-0819	Engineering Assistant II	FT	A	GP	Anchorage	200	19C / D	12.0		70,382	1,036	5,251	46,805	123,474	0
25-0820	Engineering Assistant III	FT	A	GP	Anchorage	200	21G	12.0		89,291	1,224	0	51,864	142,379	0
25-0821	Engineering Assistant II	FT	A	GP	Anchorage	200	19B / C	12.0		66,723	984	5,083	45,387	118,177	0
25-0886	Engineer/Architect I	FT	A	GP	Anchorage	200	22C / D	12.0		85,556	1,172	0	50,480	137,208	0
25-0887	Survey Lead	PT	A	LL	Anchorage	2AA	53J / K	11.0		55,568	0	4,365	39,328	99,261	0
25-0889	Survey Lead	PT	A	LL	Anchorage	2AA	53N	11.0		64,261	0	5,056	42,804	112,121	0
25-0893	Mtlb Subjrnj II	PT	A	LL	Anchorage	2AA	57F	9.0		34,813	0	6,696	29,390	70,899	0
25-0925	Engineering Assistant I	FT	A	GP	Anchorage	200	17B / C	12.0		59,192	872	4,425	42,354	106,843	0
25-0927	Tech Eng/Arch I	FT	A	GP	Anchorage	200	24K	12.0		118,307	1,621	0	62,611	182,539	0
25-0929	Land Surveyor I	FT	A	GP	Anchorage	200	21F / G	12.0		89,053	1,220	0	51,776	142,049	0
25-0933	Office Assistant II	FT	A	GP	Anchorage	200	10D / E	12.0		39,239	538	0	33,324	73,101	0
25-0954	Survey, Journey	PT	A	LL	Anchorage	2AA	54L / M	11.0		56,217	0	4,408	39,585	100,210	0
25-0958	Env Imp Any III	FT	A	GP	Anchorage	200	19G / J	12.0		79,099	1,084	0	48,089	128,272	0
25-0960	Engineer/Architect III	FT	A	SS	Anchorage	200	25L	12.0		133,661	0	0	68,338	201,999	0
25-0962	Engineer/Architect I	FT	A	GP	Anchorage	200	22D / E	12.0		88,935	1,219	0	51,732	141,886	0
25-0963	Tech Eng/Arch I	FT	A	GP	Anchorage	200	24T	12.0		163,204	2,137	0	77,990	243,331	0
25-0964	Engineer/Architect III	FT	A	SS	Anchorage	200	25P	12.0		154,877	0	0	75,456	230,333	0
25-0967	Engineer/Architect III	FT	A	SS	Anchorage	200	25O / P	12.0		151,101	0	0	74,289	225,390	0
25-1431	Engineering Assistant III	FT	A	GP	Anchorage	200	21G	12.0		89,291	1,318	6,868	54,408	151,885	0
25-1504	Mlt Jrny	PT	A	LL	Anchorage	2AA	53O	6.0		36,362	0	7,868	25,726	69,956	0

Note: If a position is split, an asterisk (\*) will appear in the Split/Count column. If the split position is also counted in the component, two asterisks (\*\*) will appear in this column. [No valid job title] appearing in the Job Class Title indicates that the PCN has an invalid class code or invalid range for the class code effective date of this scenario.



**Personal Services Expenditure Detail**  
**Department of Transportation/Public Facilities**

**Scenario:** FY2022 Governor (17280)  
**Component:** Central Design and Engineering Services (2298)  
**RDU:** Design, Engineering and Construction (526)

PCN	Job Class Title	Time Status	Retire Code	Barg Unit	Location	Salary Sched	Range / Step	Comp Months	Split / Count	Annual Salaries	COLA	Premium Pay	Annual Benefits	Total Costs	UGF Amount
25-1517	Mlt Jrny	FT	A	LL	Anchorage	2AA	53F / J	12.0		60,425	0	6,311	43,405	110,141	0
25-1626	Env Imp Any II	FT	A	GP	Anchorage	200	17C	12.0		59,631	817	0	40,878	101,326	0
25-1649	Mtlb Subjrny I	PT	A	LL	Anchorage	2AA	59B	6.0		18,020	0	6,498	18,425	42,943	0
25-1835	Engineering Assistant II	FT	A	GP	Anchorage	200	19A / B	12.0		65,682	967	4,914	44,939	116,502	0
25-2301	Right-Of-Way Agent IV	FT	A	SS	Anchorage	200	20E / F	12.0		83,433	0	0	49,734	133,167	0
25-3408	Engineering Assistant II	FT	A	GP	Anchorage	200	19E / F	12.0		75,368	1,110	5,619	48,788	130,885	0
25-3438	Engineering Assistant II	FT	A	GP	Anchorage	200	19C / D	12.0		68,375	1,009	5,251	46,061	120,696	0
25-3439	Engineering Assistant III	FT	A	GP	Anchorage	200	21D / E	12.0		82,028	1,209	6,220	51,477	140,934	0
25-3440	Engineering Assistant III	FT	A	GP	Anchorage	200	21G / J	12.0		91,319	1,346	6,868	55,159	154,692	0
25-3441	Engineer/Architect I	FT	A	GP	Anchorage	200	22J	12.0		99,665	1,366	0	55,706	156,737	0
25-3442	Engineer/Architect I	FT	A	GP	Anchorage	200	22D / E	12.0		86,918	1,191	0	50,985	139,094	0
25-3443	Engineering Assistant III	FT	A	GP	Anchorage	200	21N / O	12.0		106,390	1,570	8,179	61,227	177,366	0
25-3444	Engineering Assistant II	FT	A	GP	Anchorage	200	19C / D	12.0		69,748	1,028	5,251	46,570	122,597	0
25-3445	Engineering Assistant II	FT	A	GP	Anchorage	200	19L / M	12.0		87,906	1,296	6,663	53,819	149,684	0
25-3446	Engineering Assistant II	FT	A	GP	Anchorage	200	19G	12.0		78,020	1,151	6,001	49,912	135,084	0
25-3447	Right-Of-Way Agent III	FT	A	GG	Anchorage	200	18O	12.0		90,078	1,234	0	52,155	143,467	0
25-3448	Land Surveyor I	FT	A	GP	Anchorage	200	21M	12.0		102,395	1,403	0	56,717	160,515	0
25-3459	Engineering Assistant I	FT	A	GP	Anchorage	200	17B / C	12.0		59,017	869	4,425	42,289	106,600	0
25-3498	Env Imp Any II	FT	A	GP	Anchorage	200	17A	12.0		55,439	818	4,264	40,904	101,425	0
25-3553	Engineer/Architect II	FT	A	SS	Anchorage	200	23J / K	12.0		111,275	0	0	60,047	171,322	0
25-3559	Engineer/Architect I	FT	A	GP	Anchorage	200	22F	12.0		92,645	1,270	0	53,106	147,021	0
25-3560	Engineer/Architect II	FT	A	GP	Anchorage	200	23J / K	12.0		107,188	1,469	0	58,493	167,150	0
25-3587	Environmental Impact Analyst I	FT	A	GP	Anchorage	200	15B / C	12.0		51,399	704	0	37,829	89,932	0
25-3588	Environmental Impact Analyst I	FT	A	GP	Anchorage	200	15A	12.0		48,185	660	0	36,638	85,483	0
25-3683	Right-Of-Way Agent II	FT	A	GP	Anchorage	200	16G	12.0		63,882	875	0	42,452	107,209	0
25-3684	Right-Of-Way Agent II	FT	A	GP	Anchorage	200	16G	12.0		63,882	875	0	42,452	107,209	0
25-3736	Engineering Assistant III	FT	A	GP	Anchorage	200	21A / B	12.0		75,566	1,036	0	46,780	123,382	0
25-IN1215	College Intern II	NP	N	EE	Anchorage	N00	9A	9.0		25,140	0	0	3,200	28,340	0
25-IN1436	College Intern I	NP	N	EE	Anchorage	N00	8A	6.0		15,795	0	0	2,011	17,806	0
25-IN1437	College Intern IV	NP	N	EE	Anchorage	N00	12A	9.5		31,755	0	0	4,042	35,797	0
25-IN1438	College Intern III	NP	N	EE	Anchorage	N00	10A	9.5		28,173	0	0	3,586	31,759	0
25-IN1441	College Intern III	NP	N	EE	Anchorage	N00	10A	6.0		17,794	0	0	2,265	20,059	0
25-IN1503	College Intern II	NP	N	EE	Anchorage	N00	9A	9.0		25,140	0	0	3,200	28,340	0
25-T011	Electrical Engineer	NP	A	XE	Anchorage	N00	25Q	12.0		147,771	0	0	40,606	188,377	0

Note: If a position is split, an asterisk (\*) will appear in the Split/Count column. If the split position is also counted in the component, two asterisks (\*\*) will appear in this column. [No valid job title] appearing in the Job Class Title indicates that the PCN has an invalid class code or invalid range for the class code effective date of this scenario.

**Personal Services Expenditure Detail**  
**Department of Transportation/Public Facilities**

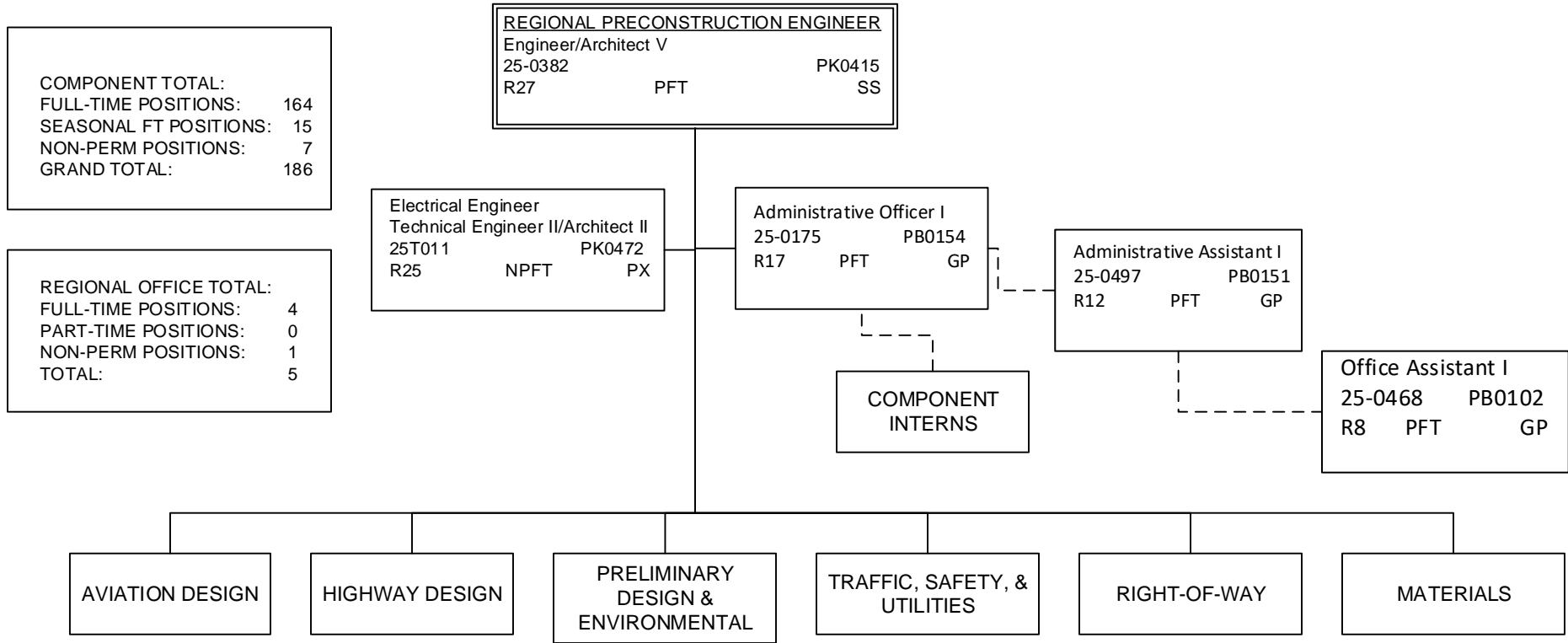
**Scenario:** FY2022 Governor (17280)  
**Component:** Central Design and Engineering Services (2298)  
**RDU:** Design, Engineering and Construction (526)

PCN	Job Class Title	Time Status	Retire Code	Barg Unit	Location	Salary Sched	Range / Step	Comp Months	Split / Count	Annual Salaries	COLA	Premium Pay	Annual Benefits	Total Costs	UGF Amount
	<b>Total Positions</b>		<b>New</b>	<b>Deleted</b>										<b>Total Salary Costs:</b>	15,172,568
														<b>Total COLA:</b>	145,131
	<b>Full Time Positions:</b>	164	0	0										<b>Total Premium Pay:</b>	430,025
	<b>Part Time Positions:</b>	15	0	0										<b>Total Benefits:</b>	9,027,404
	<b>Non Permanent Positions:</b>	7	0	0											
	<b>Positions in Component:</b>	186	0	0											
	<b>Total Component Months:</b>	2,172.5													
														<b>Total Pre-Vacancy:</b>	24,775,128
														<b>Minus Vacancy Adjustment of 6.77%:</b>	(1,676,328)
														<b>Total Post-Vacancy:</b>	23,098,800
														<b>Plus Lump Sum Premium Pay:</b>	0
														<b>Personal Services Line 100:</b>	23,098,800

<b>PCN Funding Sources:</b>	<b>Pre-Vacancy</b>	<b>Post-Vacancy</b>	<b>Percent</b>
1004 General Fund Receipts	114,676	106,917	0.46%
1005 General Fund/Program Receipts	472,196	440,246	1.91%
1007 Interagency Receipts	41,329	38,533	0.17%
1039 U/A Indirect Cost Recovery	3,401,699	3,171,534	13.73%
1061 Capital Improvement Project Receipts	20,745,229	19,341,571	83.73%
<b>Total PCN Funding:</b>	<b>24,775,128</b>	<b>23,098,800</b>	<b>100.00%</b>

Note: If a position is split, an asterisk (\*) will appear in the Split/Count column. If the split position is also counted in the component, two asterisks (\*\*) will appear in this column. [No valid job title] appearing in the Job Class Title indicates that the PCN has an invalid class code or invalid range for the class code effective date of this scenario.

DEPARTMENT OF TRANSPORTATION AND PUBLIC FACILITIES  
 RDU: DESIGN AND CONSTRUCTION  
 COMPONENT: CENTRAL DESIGN AND ENGINEERING SERVICES (2298)  
 FY2022 GOVERNOR'S PLAN



Note: All positions are located in Anchorage.

DEPARTMENT OF TRANSPORTATION AND PUBLIC FACILITIES  
 RDU: DESIGN AND CONSTRUCTION  
 COMPONENT: CENTRAL DESIGN AND ENGINEERING SERVICES (2298)  
 FY2022 GOVERNOR'S PLAN

AVIATION DESIGN TOTAL:  
 FULL-TIME POSITIONS: 20  
 PART-TIME POSITIONS: 0  
 TOTAL 20

AVIATION DESIGN GROUP CHIEF  
 Engineer/Architect IV  
 25-0378 PK0414  
 R26 PFT SS

Administrative Assistant I  
 25-0497 PB0151  
 R12 PFT GP  
 (Admin)

Engineer/Architect III  
 25-0224 PK0413  
 R25 PFT SS

Engineer/Architect II/III  
 25-0636 PK0412/0413  
 R23/25 PFT SS

Engineer/Architect II  
 25-0402 PK0412  
 R23 PFT SS

Engineer/Architect II  
 25-0429 PK0412  
 R23 PFT SS

Engineer/Architect I  
 25-0687 PK0411  
 R22 PFT GP

Engineer/Architect I  
 25-3441 PK0411  
 R22 PFT GP

Engineer/Architect I  
 PK0411  
 R22 PFT GP  
 25-0599  
 25-3442  
 Engineer Assistant III  
 25-3440 PK0303  
 R21 PFT GP

Engineer Assistant III  
 25-3439 PK0303  
 R21 PFT GP  
 Engineering Assistant I/II  
 PK0301/0302  
 R17/19 PFT GP  
 25-0808  
 25-3438  
 Drafting Technician III  
 25-0705 PK0803  
 R15 PFT GP

Engineer Assistant III  
 25-0685 PK0303  
 R21 PFT GP  
 Engineering Assistant I/II  
 PK0301/0302  
 R17/19 PFT GP  
 25-0689  
 25-0738  
 Drafting Technician III  
 25-0706 PK0803  
 R15 PFT GP

Engineer/Architect I  
 PK0411  
 R22 PFT GP  
 25-0671  
 25-0676

Note: All positions are located in Anchorage.

DEPARTMENT OF TRANSPORTATION AND PUBLIC FACILITIES  
 RDU: DESIGN AND CONSTRUCTION  
 COMPONENT: CENTRAL DESIGN AND ENGINEERING SERVICES (2298)  
 FY2022 GOVERNOR'S PLAN

HIGHWAY DESIGN TOTAL:	
FULL-TIME POSITIONS:	31
PART-TIME POSITIONS:	0
NON-PERM POSITIONS:	0
TOTAL	31

HIGHWAY DESIGN GROUP CHIEF  
 Engineer/Architect IV  
 25-0389 PK0414  
 R26 PFT SS

Administrative Assistant I  
 25-0497 PB0151  
 R12 PFT GP (Admin)

Engineer/Architect II/III  
 25-0404 PK0412/0413  
 R23/25 PFT SS

Engineer/Architect III  
 25-0616 PK0413  
 R25 PFT SS

Engineer/Architect III  
 25-0797 PK0413  
 R25 PFT SS

Engineer/Architect III  
 25-0967 PK0413  
 R25 PFT SS

Engineer/Architect I  
 25-0962 PK0411  
 R22 PFT GP

Engineer/Architect II  
 25-3560 PK0412  
 R23 PFT GP

Engineer/Architect II  
 25-0617 PK0412  
 R23 PFT GP

Engineer/Architect I  
 25-0631 PK0411  
 R22 PFT GP

Engineer/Architect I  
 25-0886 PK0411  
 R22 PFT GP

Engineer/Architect I  
 25-0675 PK0411  
 R22 PFT GP

Engineering Asst. III / Eng Associate / Eng./Arch. I  
 25-0820  
 PK0303/0305/0411  
 R21/22 PFT GP

Engineering Assistant III PK0303 R21 PFT GP	Engineering Assistant I/II PK0301/0302 R17/19 PFT GP
25-0541	25-0655
25-0683	25-0662

Engineering Assistant III  
 PK0303  
 R21 PFT GP

Engineering Assistant III  
 PK0303  
 R21 PFT GP

Drafting Technician III  
 25-0487 PK0803  
 R15 PFT GP

25-0598

25-0665

25-0515

25-0640

Engineering Assistant II  
 25-0819 PK0302  
 R19 PFT GP

Engineering Assistant I/II  
 PK0301/0302  
 R17/19 PFT GP

Engineering Assistant I/II  
 25-0644 PK0301/0302  
 R17/19 PFT GP

25-0646

25-0802

Drafting Technician III  
 25-0667 PK0803  
 R15 PFT GP

Note: All positions are located in Anchorage.

DEPARTMENT OF TRANSPORTATION AND PUBLIC FACILITIES  
 RDU: DESIGN AND CONSTRUCTION  
 COMPONENT: CENTRAL DESIGN AND ENGINEERING SERVICES (2298)  
 FY2022 GOVERNOR'S PLAN

HIGHWAY DESIGN GROUP CHIEF			
Engineer/Architect IV			
25-0389			PK0414
R26	PFT		SS

Engineer/Architect II/III			
25-0960	PK0412/0413		
R23/25	PFT		SS

Consultant Coordinator			
Engineer/Architect I			
PK0411	R22	PFT	GP
25-0619			
25-0620			

Engineer/Architect II/III			
25-0416	PK0412/0413		
R23/25	PFT		SS

Engineering Assistant I/II			
25-1835	PK0301/0302		
R17/19	PFT		GP

Note: All positions are located in Anchorage.

DEPARTMENT OF TRANSPORTATION AND PUBLIC FACILITIES  
 RDU: DESIGN AND CONSTRUCTION  
 COMPONENT: CENTRAL DESIGN AND ENGINEERING SERVICES (2298)  
 FY2022 GOVERNOR'S PLAN

PRELIMINARY DESIGN TOTAL:  
 FULL-TIME POSITIONS: 29  
 PART-TIME POSITIONS: 0  
 TOTAL 29

PD&E Group Chief  
 Engineer/Architect IV  
 25-0435 PK0414  
 R26 PFT SS

Office Assistant II  
 25-0933 PB0103  
 R10 PFT GP

Env. Impact Analysis Mgr. I  
 25-0621 PK0251  
 R21 PFT SS

Env. Impact Analyst III  
 25-0663 PK0243  
 R19 PFT GP

Env. Impact Analyst III  
 25-0753 PK0243  
 R19 PFT GP

Env. Impact Analyst II/III  
 25-0755 PK0242/0243  
 R17/19 PFT GP/GP

Env. Impact Analyst II/III  
 25-0958 PK0242/0243  
 R17/19 PFT GP/GP

Env. Impact Analyst I/II/III  
 25-1626 PK0241/0242/0243  
 R15/17/19 PFT GP

Env. Impact Analyst III  
 25-0751 PK0243  
 R19 PFT GP

Env. Impact Analyst I/II/III  
 25-0762 PK0241/0242/0243  
 R15/17/19 PFT GP

Env. Impact Analyst III  
 25-0756 PK0243  
 R19 PFT GP

Env. Impact Analyst I/II  
 25-3588 PK0241/0242  
 R15/17 PFT GP

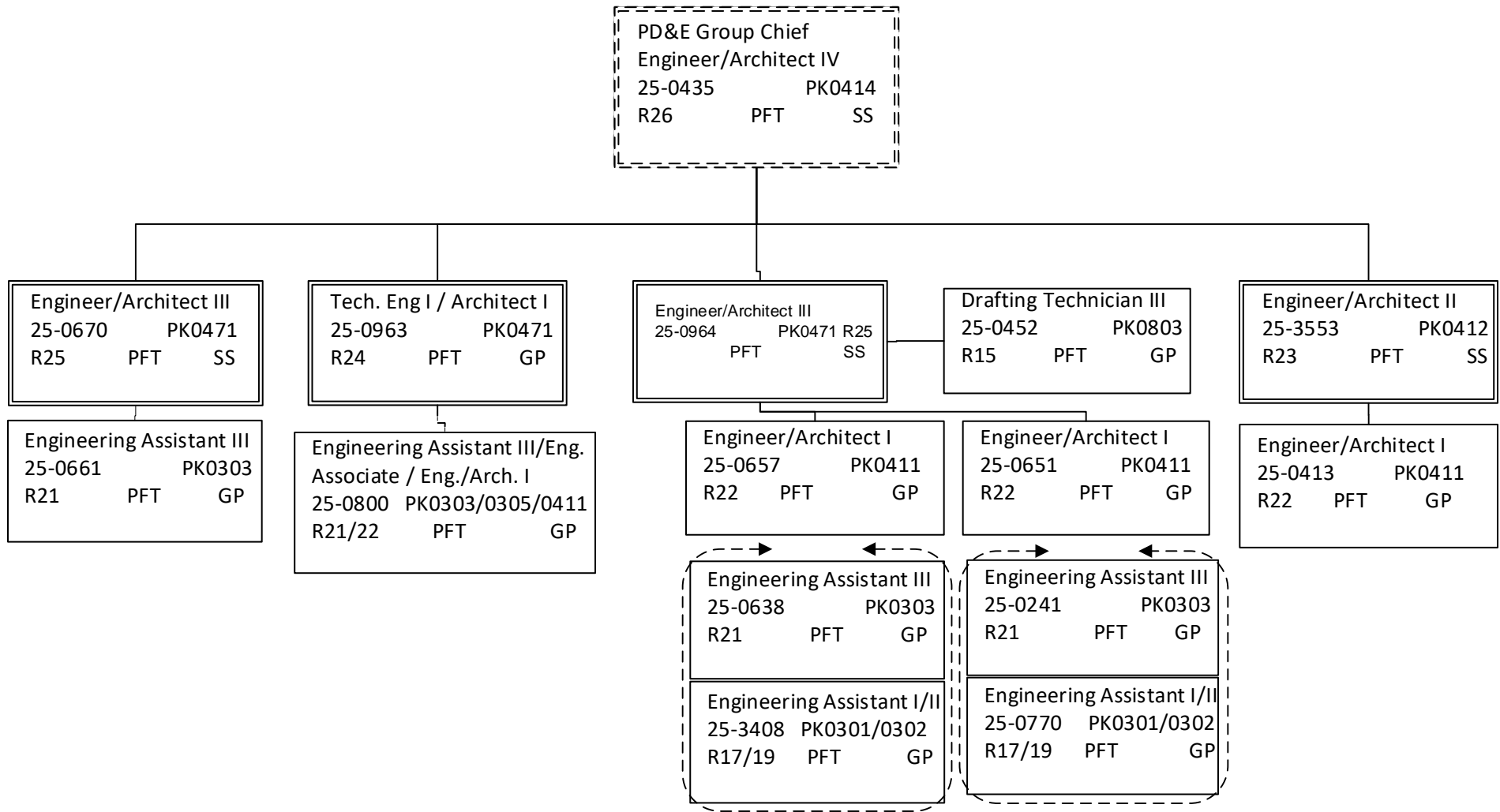
Env. Impact Analyst I/II/III  
 25-0752 PK0241/0242/0243  
 R15/17/19 PFT GP

Env. Impact Analyst I/II  
 25-3587 PK0241/0242  
 R15/17 PFT GP

Env. Impact Analyst I/II  
 25-3498 PK0241/0242  
 R15/17 PFT GP

Note: All positions are located in Anchorage.

DEPARTMENT OF TRANSPORTATION AND PUBLIC FACILITIES  
 RDU: DESIGN AND CONSTRUCTION  
 COMPONENT: CENTRAL DESIGN AND ENGINEERING SERVICES (2298)  
 FY2022 GOVERNOR'S PLAN

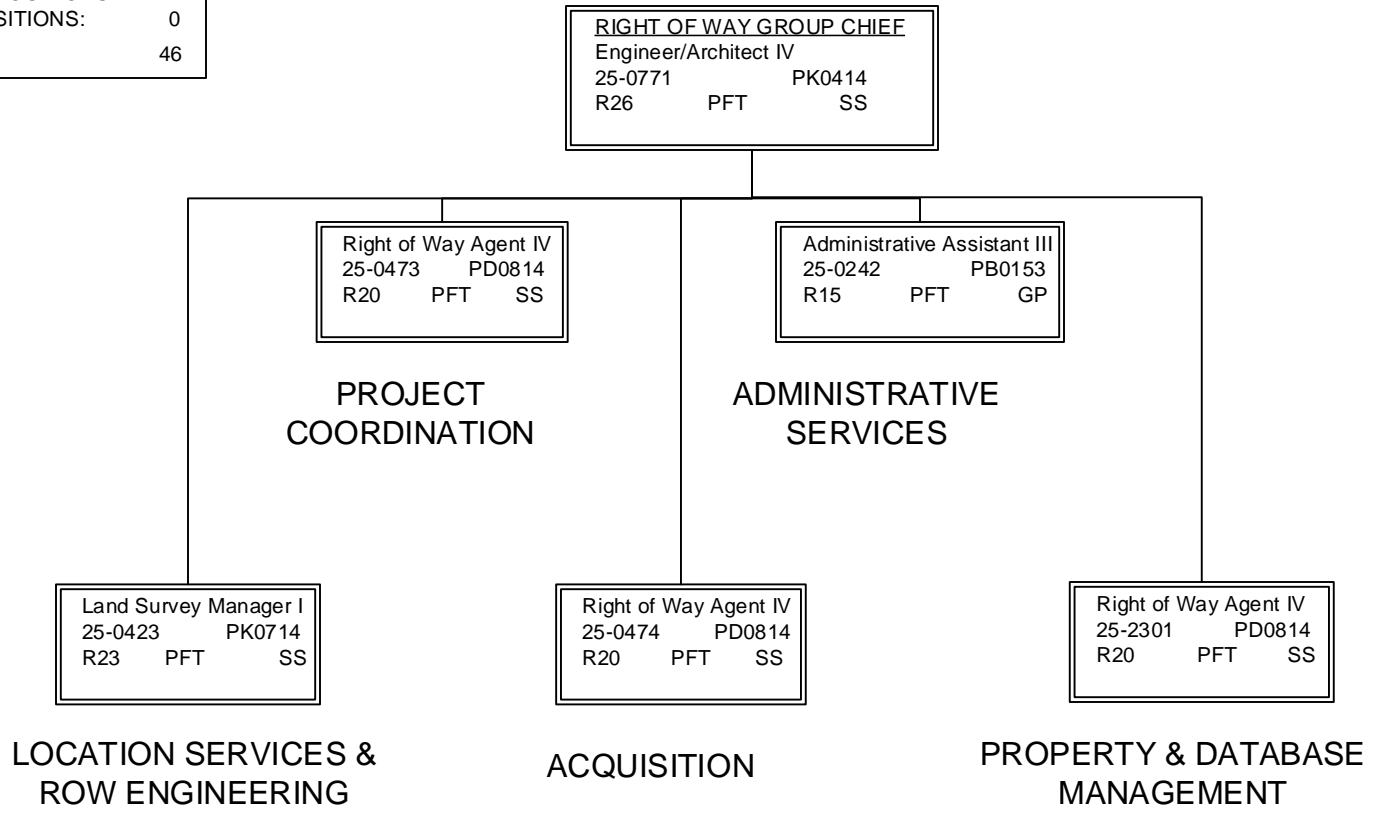


Note: All positions are located in Anchorage.



DEPARTMENT OF TRANSPORTATION AND PUBLIC FACILITIES  
 RDU: DESIGN AND CONSTRUCTION  
 COMPONENT: CENTRAL DESIGN AND ENGINEERING SERVICES (2298)  
 FY2022 GOVERNOR'S PLAN

RIGHT OF WAY TOTAL:	
FULL-TIME POSITIONS:	39
SEASONAL FT POSITIONS:	7
NON-PERM POSITIONS:	0
TOTAL	46

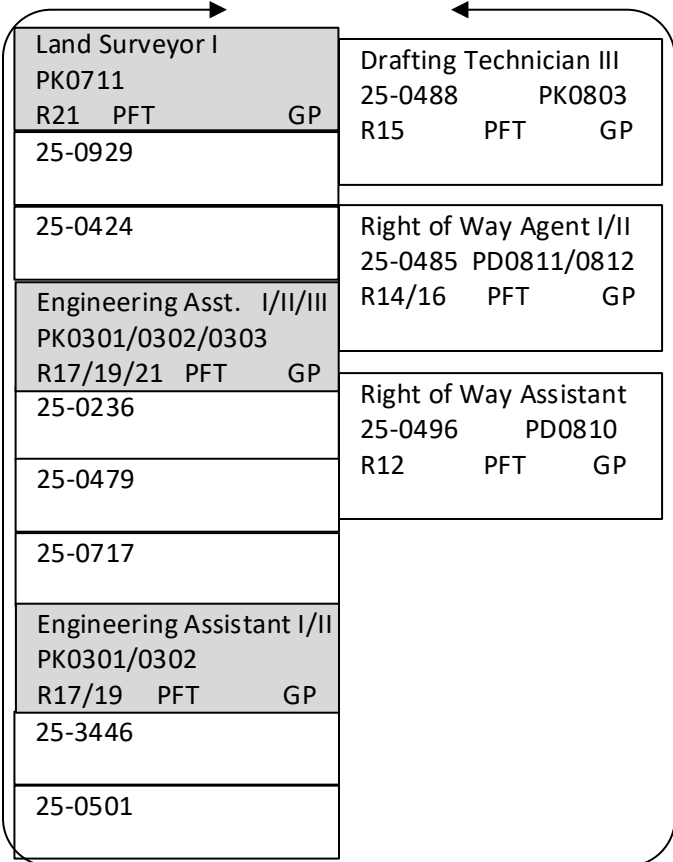


Note: All positions are located in Anchorage.

RIGHT OF WAY GROUP CHIEF		
Engineer/Architect IV		
25-0771		PK0414
R26	PFT	SS

LOCATION SERVICES & ROW ENGINEERING

Land Survey Manager I		
25-0423		PK0714
R23	PFT	SS

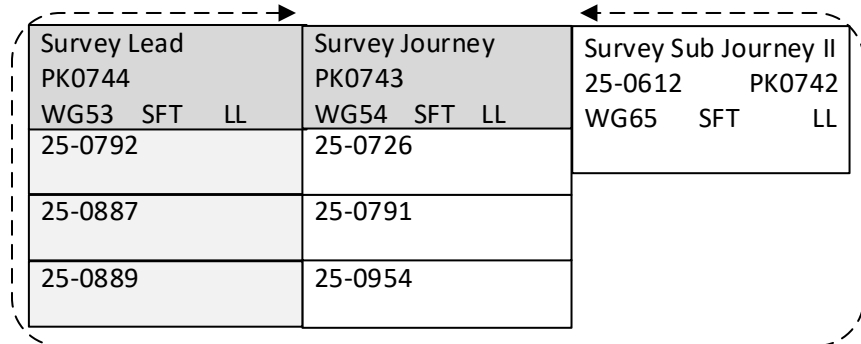


Land Surveyor II		
25-0632		PK0712
R22	PFT	SS

Land Surveyor I		
25-3448		PK0711
R21	PFT	GP

Engineering Assistant III		
25-0643		PK0303
R21	PFT	GP

Eng. Assistant I/II		
25-3445		PK0301/0302
R17/19	PFT	GP



<b>RIGHT OF WAY GROUP CHIEF</b>		
Engineer/Architect IV		
25-0771		PK0414
R26	PFT	SS

PROJECT COORDINATION

ACQUISITION

ADMINISTRATIVE SERVICES

PROPERTY & DATABASE MANAGEMENT

<b>Right of Way Agent IV</b>		
25-0473		PD0814
R20	PFT	SS

<b>Right of Way Agent IV</b>		
25-0474		PD0814
R20	PFT	SS

<b>Administrative Asst. III</b>		
25-0242		PB0153
R15	PFT	GP

<b>Right of Way Agent IV/II</b>		
25-2301		PD0814
R20	PFT	SS

<b>Right of Way Agent III</b>		
PD0813		
R18	PFT	GP
25-0433		
25-0476		
25-0480		
<b>Right of Way Agent II</b>		
PD0812		
R16	PFT	GP
25-0499		
25-0712		
25-3683		

<b>Right of Way Agent III</b>		
PD0813		
R18	PFT	GP
25-0421		
25-0477		
<b>Right of Way Agent II/III</b>		
PD0812/0813		
R16/18	PFT	GP
25-0486		
25-0695		
<b>Right of Way Agent I/II</b>		
25-0719		PD0811/0812
R14/16	PFT	GP
<b>Right of Way Agent I</b>		
25-0561		PD0811
R14	PFT	GP

<b>Right of Way Agent III</b>		
25-3447		PD0813
R18	PFT	GP

<b>Right of Way Agent II</b>		
PD0812		
R16	PFT	GP
25-0482		
25-3684		
<b>Right of Way Agent I/II</b>		
PD0811/0812		
R14/16	PFT	GP
25-0427		
25-0715		
<b>Right of Way Assistant</b>		
25-0492		PD0810
R12	PFT	GP

DEPARTMENT OF TRANSPORTATION AND PUBLIC FACILITIES  
 RDU: DESIGN AND CONSTRUCTION  
 COMPONENT: CENTRAL DESIGN AND ENGINEERING SERVICES (2298)  
 FY2022 GOVERNOR'S PLAN

TRAFFIC, SAFETY, & UTILITIES TOTAL:	
FULL-TIME POSITIONS:	28
PART-TIME POSITIONS:	0
TOTAL	28

Traffic, Safety, & Utilities Group Chief  
 Engineer/Architect IV  
 25-0414 PK0414  
 R26 PFT SS

Administrative Asst. I  
 25-0401 PB0151  
 R12 PFT GP

UTILITY PERMITTING/UTILITY  
 ACCOMODATION & RELOCATION

TRAFFIC SAFETY

TRAFFIC DESIGN

Engineer/Architect III  
 25-0623 PK0413  
 R25 PFT SS

PSA Coordinator  
 Engineering Assistant III  
 25-1431 PK0303  
 R21 PFT GP

Technical Engineer I/Architect I  
 25-0627 PK0471  
 R24 PFT SS

Engineer/Architect II  
 25-0672 PK0412  
 R23 PFT SS

Engineering Assistant III  
 25-0649 PK0303  
 R21 PFT GP

EA III/ Eng. Assoc. / Eng./Arch. I  
 PK0303/0305/0411  
 R21/22 PFT GP  
 25-0407  
 25-0652

Technical Engineer I/  
 Architect I  
 25-0927 PK0471  
 R24 PFT GP

EA III/ Eng. Assoc. / Eng./Arch. I  
 PK0303/0305/0411  
 R21/22 PFT GP  
 25-0656  
 25-3736

Engineering Assistant III  
 25-3443 PK0303  
 R21 PFT GP

Engineering Assistant I/II  
 25-0659 PK0301/0302  
 R17/19 PFT GP

Engineer/Architect I  
 25-3559 PK0411  
 R22 PFT GP

Engineering Assistant III  
 PK0303 R21 PFT GP  
 25-0628  
 25-0629

Engineering Asst. I/II/III  
 PK0301/0302/0303  
 R17/19/21 PFT GP  
 25-0626  
 25-0821

Drafting Technician III  
 25-0702 PK0803  
 R15 PFT GP

Engineering Assistant III  
 25-0648 PK0303  
 R21 PFT GP  
 Vacant

Engineering Asst II/III PK0302/0303 R19/21 PFT GP 25-0635	Engineering Assistant I/II PK0301/0302 R17/19 PFT GP 25-0475
25-0810	25-0531
25-0634	25-0805
	25-3444

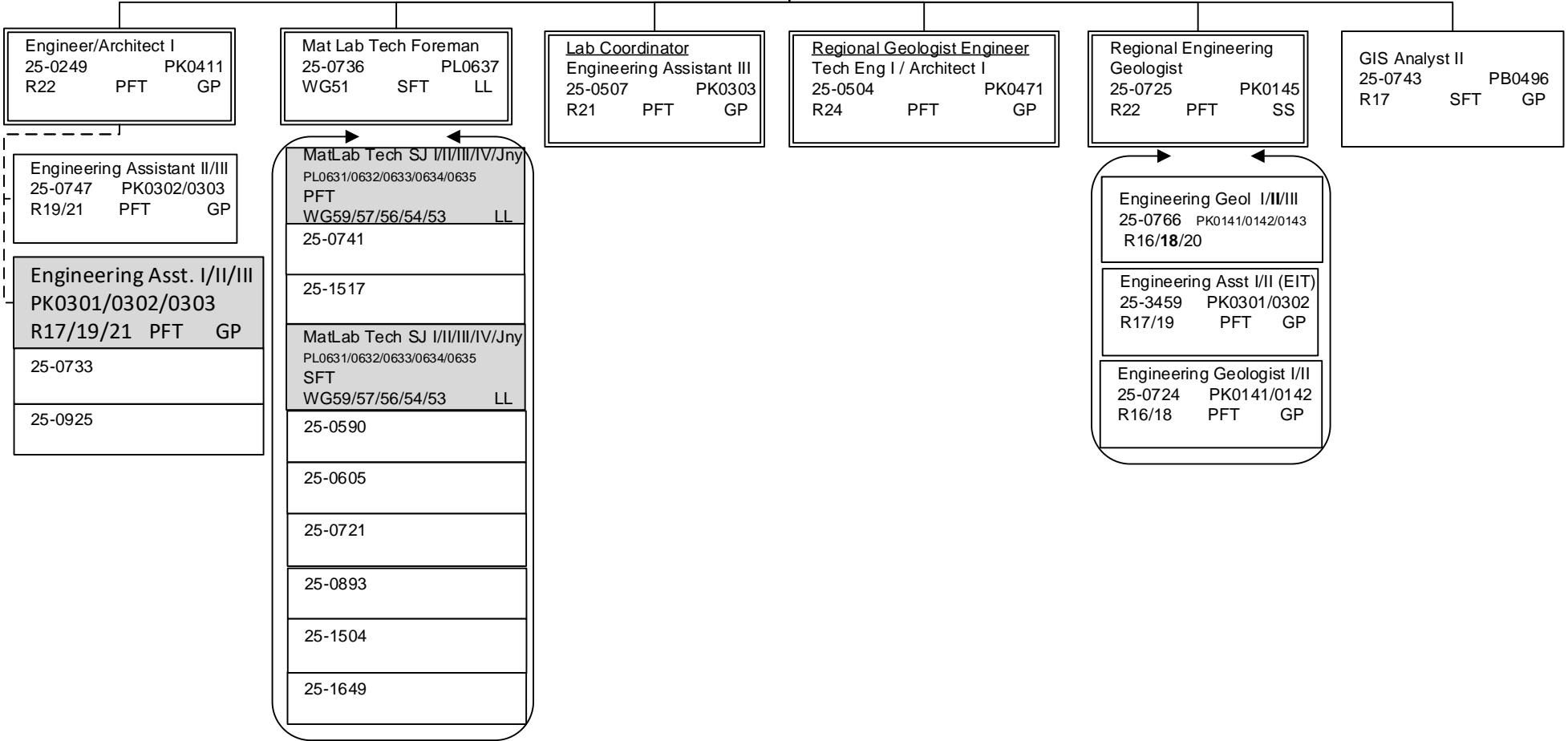
Note: All positions are located in Anchorage.

DEPARTMENT OF TRANSPORTATION AND PUBLIC FACILITIES  
 RDU: DESIGN AND CONSTRUCTION  
 COMPONENT: CENTRAL DESIGN AND ENGINEERING SERVICES (2298)  
 FY2022 GOVERNOR'S PLAN

**MATERIALS GROUP CHIEF**  
 Engineer/Architect IV  
 25-0387 PK0414  
 R26 PFT SS

Office Assistant II  
 25-0495 PB0103  
 R10 PFT GP

MATERIALS TOTAL:  
 FULL-TIME POSITIONS: 14  
 SEASONAL FT POSITIONS: 8  
 NON-PERM POSITIONS: 0  
 TOTAL 22



Note: All positions are located in Anchorage.

DEPARTMENT OF TRANSPORTATION AND PUBLIC FACILITIES  
 RDU: DESIGN AND CONSTRUCTION  
 COMPONENT: CENTRAL DESIGN AND ENGINEERING SERVICES (2298)  
 FY2022 GOVERNOR'S PLAN

YEAR ROUND COLLEGE INTERNS

NON-PERM TOTAL:	
FULL-TIME POSITIONS:	0
PART-TIME POSITIONS:	0
NON-PERM POSITIONS:	6
TOTAL	6

College Intern I/II (FLEX) 25IN1215 PF0621/0622 R8/9 EE
---

College Intern I/II/III/IV (FLEX) R8/9/10/12 EE PF0621/0622/0623/0624	
25IN1436	25IN1441
25IN1437	25IN1503
25IN1438	

Note: All positions are located in Anchorage.