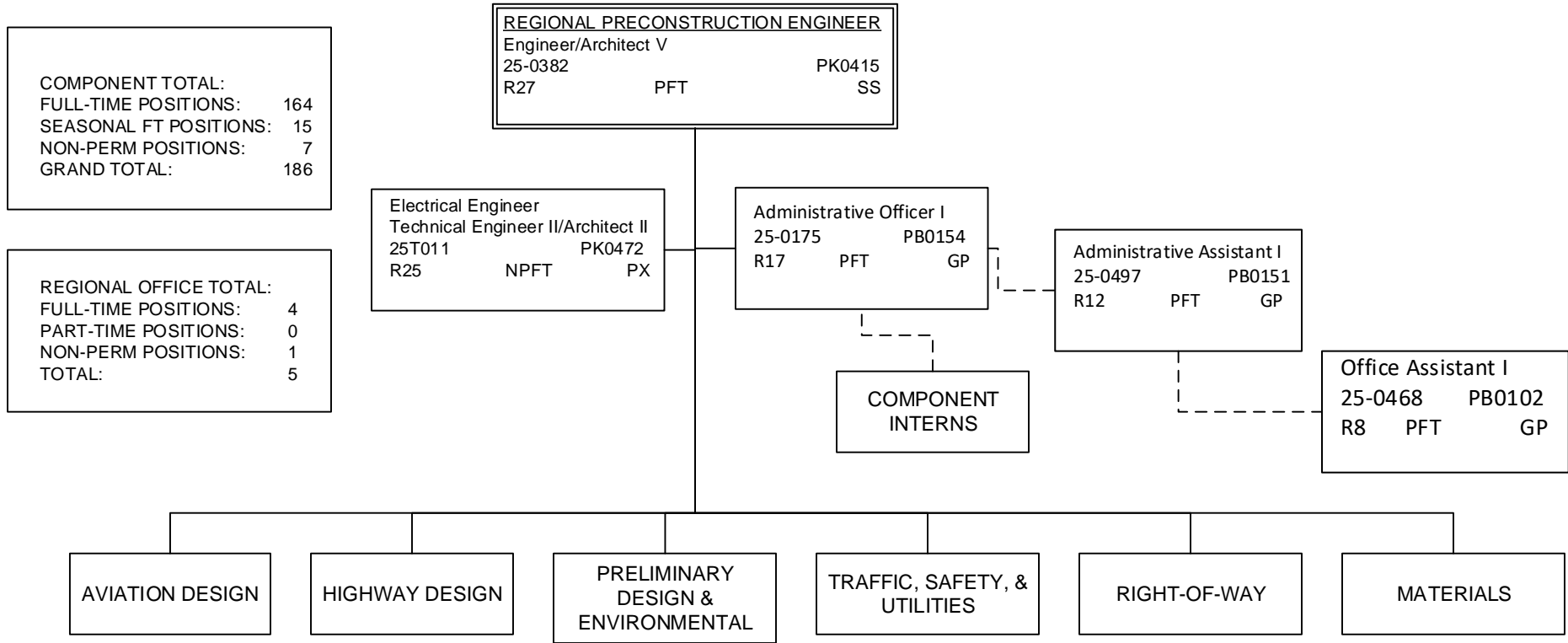


DEPARTMENT OF TRANSPORTATION AND PUBLIC FACILITIES
 RDU: DESIGN AND CONSTRUCTION
 COMPONENT: CENTRAL DESIGN AND ENGINEERING SERVICES (2298)
 FY2022 GOVERNOR'S PLAN



Note: All positions are located in Anchorage.

DEPARTMENT OF TRANSPORTATION AND PUBLIC FACILITIES
 RDU: DESIGN AND CONSTRUCTION
 COMPONENT: CENTRAL DESIGN AND ENGINEERING SERVICES (2298)
 FY2022 GOVERNOR'S PLAN

AVIATION DESIGN TOTAL:
 FULL-TIME POSITIONS: 20
 PART-TIME POSITIONS: 0
 TOTAL 20

AVIATION DESIGN GROUP CHIEF
 Engineer/Architect IV
 25-0378 PK0414
 R26 PFT SS

Administrative Assistant I
 25-0497 PB0151
 R12 PFT GP
 (Admin)

Engineer/Architect III
 25-0224 PK0413
 R25 PFT SS

Engineer/Architect II/III
 25-0636 PK0412/0413
 R23/25 PFT SS

Engineer/Architect II
 25-0402 PK0412
 R23 PFT SS

Engineer/Architect II
 25-0429 PK0412
 R23 PFT SS

Engineer/Architect I
 25-0687 PK0411
 R22 PFT GP

Engineer/Architect I
 25-3441 PK0411
 R22 PFT GP

Engineer/Architect I
 PK0411
 R22 PFT GP
 25-0671
 25-0676

Engineer/Architect I
 PK0411
 R22 PFT GP
 25-0599
 25-3442
 Engineer Assistant III
 25-3440 PK0303
 R21 PFT GP

Engineer Assistant III
 25-3439 PK0303
 R21 PFT GP
 Engineering Assistant I/II
 PK0301/0302
 R17/19 PFT GP
 25-0808
 25-3438
 Drafting Technician III
 25-0705 PK0803
 R15 PFT GP

Engineer Assistant III
 25-0685 PK0303
 R21 PFT GP
 Engineering Assistant I/II
 PK0301/0302
 R17/19 PFT GP
 25-0689
 25-0738
 Drafting Technician III
 25-0706 PK0803
 R15 PFT GP

Note: All positions are located in Anchorage.

DEPARTMENT OF TRANSPORTATION AND PUBLIC FACILITIES
 RDU: DESIGN AND CONSTRUCTION
 COMPONENT: CENTRAL DESIGN AND ENGINEERING SERVICES (2298)
 FY2022 GOVERNOR'S PLAN

HIGHWAY DESIGN TOTAL:	
FULL-TIME POSITIONS:	31
PART-TIME POSITIONS:	0
NON-PERM POSITIONS:	0
TOTAL	31

HIGHWAY DESIGN GROUP CHIEF
 Engineer/Architect IV
 25-0389 PK0414
 R26 PFT SS

Administrative Assistant I
 25-0497 PB0151
 R12 PFT GP (Admin)

Engineer/Architect II/III
 25-0404 PK0412/0413
 R23/25 PFT SS

Engineer/Architect III
 25-0616 PK0413
 R25 PFT SS

Engineer/Architect III
 25-0797 PK0413
 R25 PFT SS

Engineer/Architect III
 25-0967 PK0413
 R25 PFT SS

Engineer/Architect I
 25-0962 PK0411
 R22 PFT GP

Engineer/Architect II
 25-3560 PK0412
 R23 PFT GP

Engineer/Architect II
 25-0617 PK0412
 R23 PFT GP

Engineer/Architect I
 25-0631 PK0411
 R22 PFT GP

Engineer/Architect I
 25-0886 PK0411
 R22 PFT GP

Engineer/Architect I
 25-0675 PK0411
 R22 PFT GP

Engineering Asst. III / Eng Associate / Eng./Arch. I
 25-0820
 PK0303/0305/0411
 R21/22 PFT GP

Engineering Assistant III PK0303 R21 PFT GP	Engineering Assistant I/II PK0301/0302 R17/19 PFT GP
25-0541	25-0655
25-0683	25-0662

Engineering Assistant III
 PK0303
 R21 PFT GP

Engineering Assistant III
 PK0303
 R21 PFT GP

Drafting Technician III
 25-0487 PK0803
 R15 PFT GP

25-0598

25-0665

25-0515

25-0640

Engineering Assistant II
 25-0819 PK0302
 R19 PFT GP

Engineering Assistant I/II
 PK0301/0302
 R17/19 PFT GP

Engineering Assistant I/II
 25-0644 PK0301/0302
 R17/19 PFT GP

25-0646

25-0802

Drafting Technician III
 25-0667 PK0803
 R15 PFT GP

Note: All positions are located in Anchorage.

DEPARTMENT OF TRANSPORTATION AND PUBLIC FACILITIES
 RDU: DESIGN AND CONSTRUCTION
 COMPONENT: CENTRAL DESIGN AND ENGINEERING SERVICES (2298)
 FY2022 GOVERNOR'S PLAN

HIGHWAY DESIGN GROUP CHIEF			
Engineer/Architect IV			
25-0389			PK0414
R26	PFT		SS

Engineer/Architect II/III			
25-0960	PK0412/0413		
R23/25	PFT		SS

Consultant Coordinator			
Engineer/Architect I			
PK0411	R22	PFT	GP

25-0619

25-0620

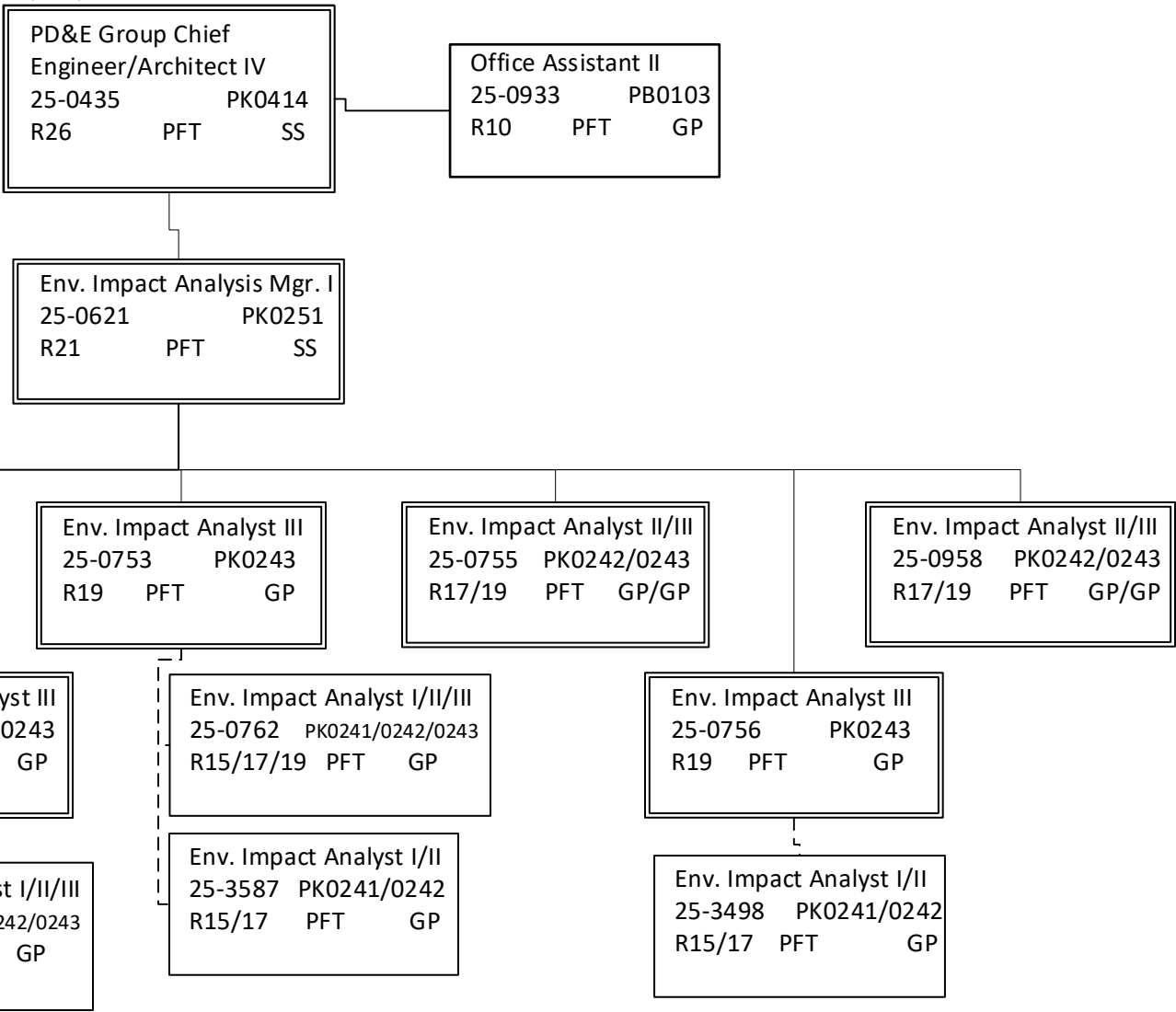
Engineer/Architect II/III			
25-0416	PK0412/0413		
R23/25	PFT		SS

Engineering Assistant I/II			
25-1835	PK0301/0302		
R17/19	PFT		GP

Note: All positions are located in Anchorage.

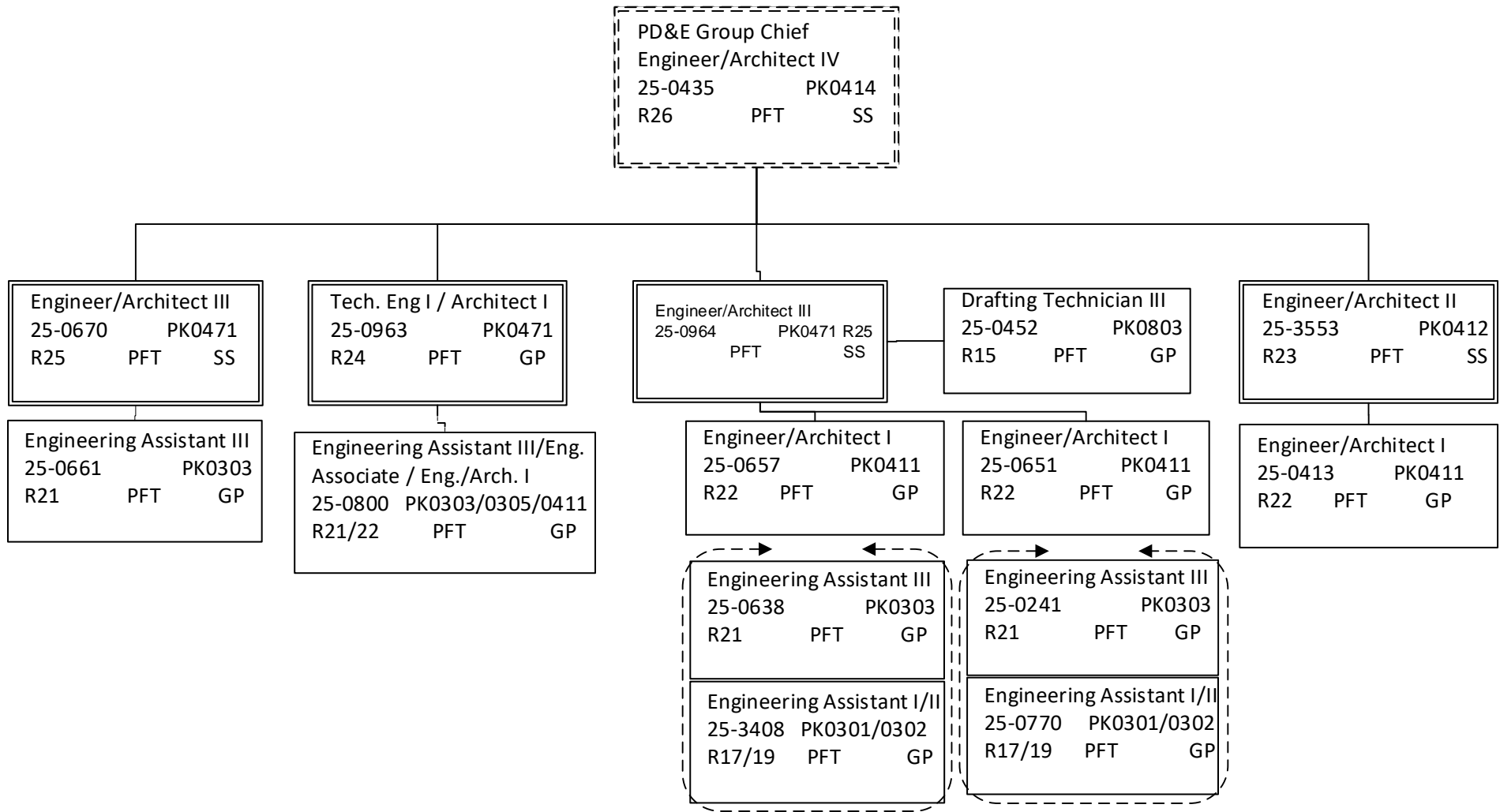
DEPARTMENT OF TRANSPORTATION AND PUBLIC FACILITIES
 RDU: DESIGN AND CONSTRUCTION
 COMPONENT: CENTRAL DESIGN AND ENGINEERING SERVICES (2298)
 FY2022 GOVERNOR'S PLAN

PRELIMINARY DESIGN TOTAL:
 FULL-TIME POSITIONS: 29
 PART-TIME POSITIONS: 0
 TOTAL 29



Note: All positions are located in Anchorage.

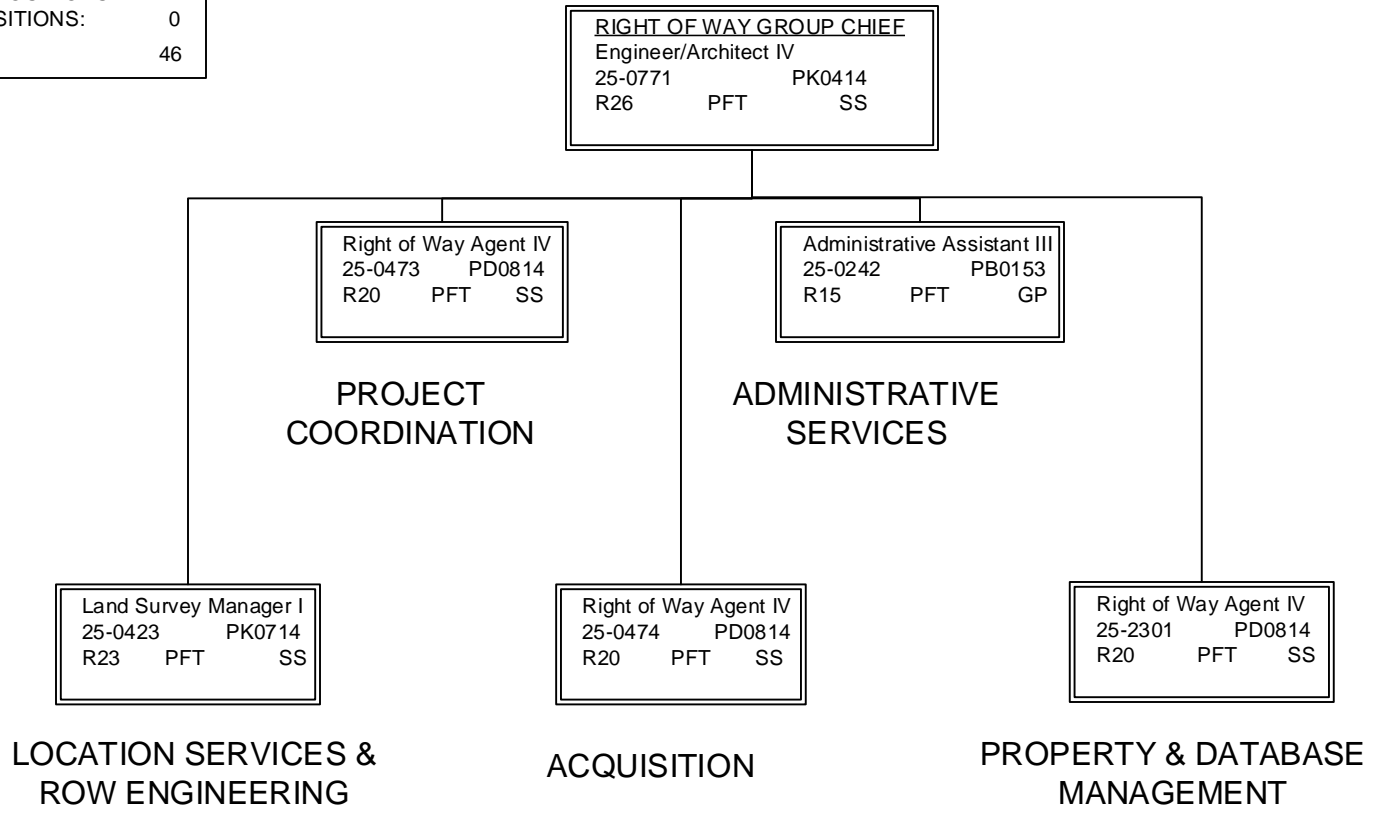
DEPARTMENT OF TRANSPORTATION AND PUBLIC FACILITIES
 RDU: DESIGN AND CONSTRUCTION
 COMPONENT: CENTRAL DESIGN AND ENGINEERING SERVICES (2298)
 FY2022 GOVERNOR'S PLAN



Note: All positions are located in Anchorage.

DEPARTMENT OF TRANSPORTATION AND PUBLIC FACILITIES
 RDU: DESIGN AND CONSTRUCTION
 COMPONENT: CENTRAL DESIGN AND ENGINEERING SERVICES (2298)
 FY2022 GOVERNOR'S PLAN

RIGHT OF WAY TOTAL:	
FULL-TIME POSITIONS:	39
SEASONAL FT POSITIONS:	7
NON-PERM POSITIONS:	0
TOTAL	46

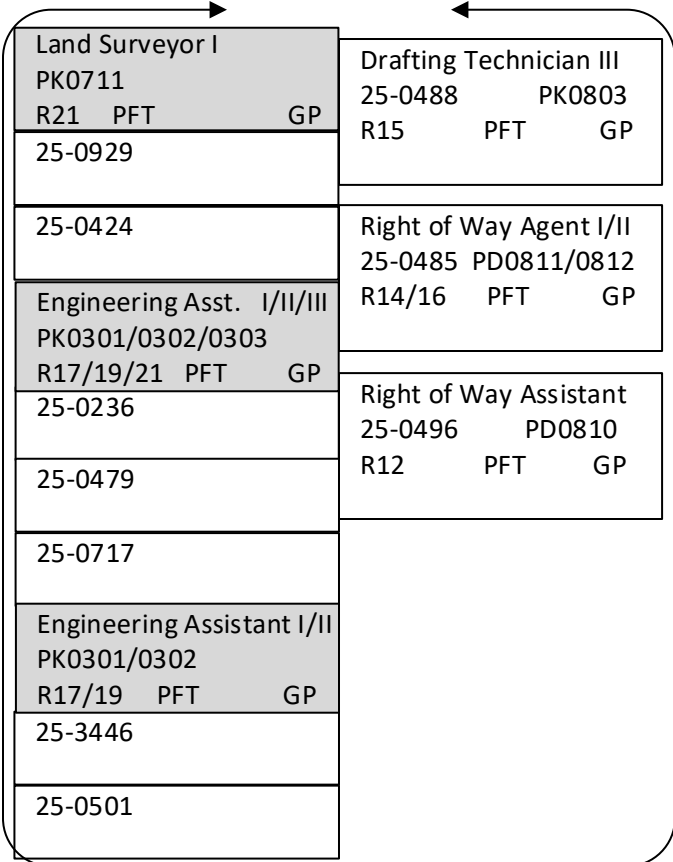


Note: All positions are located in Anchorage.

RIGHT OF WAY GROUP CHIEF		
Engineer/Architect IV		
25-0771		PK0414
R26	PFT	SS

LOCATION SERVICES & ROW ENGINEERING

Land Survey Manager I		
25-0423		PK0714
R23	PFT	SS

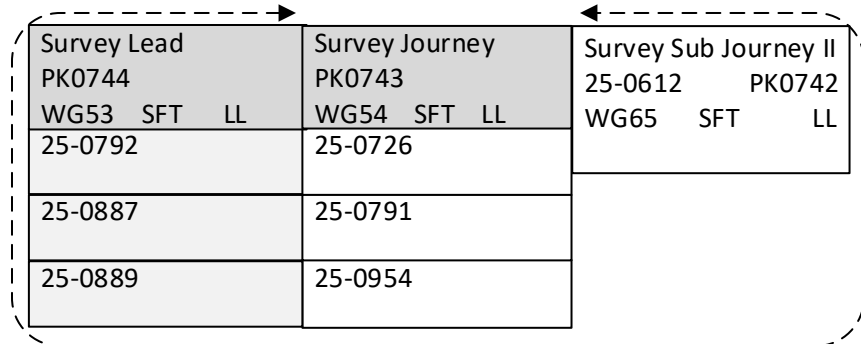


Land Surveyor II		
25-0632		PK0712
R22	PFT	SS

Land Surveyor I		
25-3448		PK0711
R21	PFT	GP

Engineering Assistant III		
25-0643		PK0303
R21	PFT	GP

Eng. Assistant I/II		
25-3445		PK0301/0302
R17/19	PFT	GP



RIGHT OF WAY GROUP CHIEF		
Engineer/Architect IV		
25-0771		PK0414
R26	PFT	SS

PROJECT COORDINATION

ACQUISITION

ADMINISTRATIVE SERVICES

PROPERTY & DATABASE MANAGEMENT

Right of Way Agent IV		
25-0473		PD0814
R20	PFT	SS

Right of Way Agent IV		
25-0474		PD0814
R20	PFT	SS

Administrative Asst. III		
25-0242		PB0153
R15	PFT	GP

Right of Way Agent IV/II		
25-2301		PD0814
R20	PFT	SS

Right of Way Agent III		
PD0813		
R18	PFT	GP
25-0433		
25-0476		
25-0480		
Right of Way Agent II		
PD0812		
R16	PFT	GP
25-0499		
25-0712		
25-3683		

Right of Way Agent III		
PD0813		
R18	PFT	GP
25-0421		
25-0477		
Right of Way Agent II/III		
PD0812/0813		
R16/18	PFT	GP
25-0486		
25-0695		
Right of Way Agent I/II		
25-0719		PD0811/0812
R14/16	PFT	GP
Right of Way Agent I		
25-0561		PD0811
R14	PFT	GP

Right of Way Agent III		
25-3447		PD0813
R18	PFT	GP

Right of Way Agent II		
PD0812		
R16	PFT	GP
25-0482		
25-3684		
Right of Way Agent I/II		
PD0811/0812		
R14/16	PFT	GP
25-0427		
25-0715		
Right of Way Assistant		
25-0492		PD0810
R12	PFT	GP

DEPARTMENT OF TRANSPORTATION AND PUBLIC FACILITIES
 RDU: DESIGN AND CONSTRUCTION
 COMPONENT: CENTRAL DESIGN AND ENGINEERING SERVICES (2298)
 FY2022 GOVERNOR'S PLAN

TRAFFIC, SAFETY, & UTILITIES TOTAL:	
FULL-TIME POSITIONS:	28
PART-TIME POSITIONS:	0
TOTAL	28

Traffic, Safety, & Utilities Group Chief
 Engineer/Architect IV
 25-0414 PK0414
 R26 PFT SS

Administrative Asst. I
 25-0401 PB0151
 R12 PFT GP

UTILITY PERMITTING/UTILITY
 ACCOMODATION & RELOCATION

TRAFFIC SAFETY

TRAFFIC DESIGN

Engineer/Architect III
 25-0623 PK0413
 R25 PFT SS

PSA Coordinator
 Engineering Assistant III
 25-1431 PK0303
 R21 PFT GP

Technical Engineer I/Architect I
 25-0627 PK0471
 R24 PFT SS

Engineer/Architect II
 25-0672 PK0412
 R23 PFT SS

Engineering Assistant III
 25-0649 PK0303
 R21 PFT GP

EA III/ Eng. Assoc. / Eng./Arch. I
 PK0303/0305/0411
 R21/22 PFT GP
 25-0407
 25-0652

Technical Engineer I/
 Architect I
 25-0927 PK0471
 R24 PFT GP

EA III/ Eng. Assoc. / Eng./Arch. I
 PK0303/0305/0411
 R21/22 PFT GP
 25-0656
 25-3736

Engineering Assistant III
 25-3443 PK0303
 R21 PFT GP

Engineering Assistant I/II
 25-0659 PK0301/0302
 R17/19 PFT GP

Engineer/Architect I
 25-3559 PK0411
 R22 PFT GP

Engineering Assistant III
 PK0303 R21 PFT GP
 25-0628
 25-0629

Engineering Asst. I/II/III
 PK0301/0302/0303
 R17/19/21 PFT GP
 25-0626
 25-0821

Drafting Technician III
 25-0702 PK0803
 R15 PFT GP

Engineering Assistant III
 25-0648 PK0303
 R21 PFT GP
 Vacant

Engineering Asst II/III PK0302/0303 R19/21 PFT GP 25-0635	Engineering Assistant I/II PK0301/0302 R17/19 PFT GP 25-0475
25-0810	25-0531
25-0634	25-0805
	25-3444

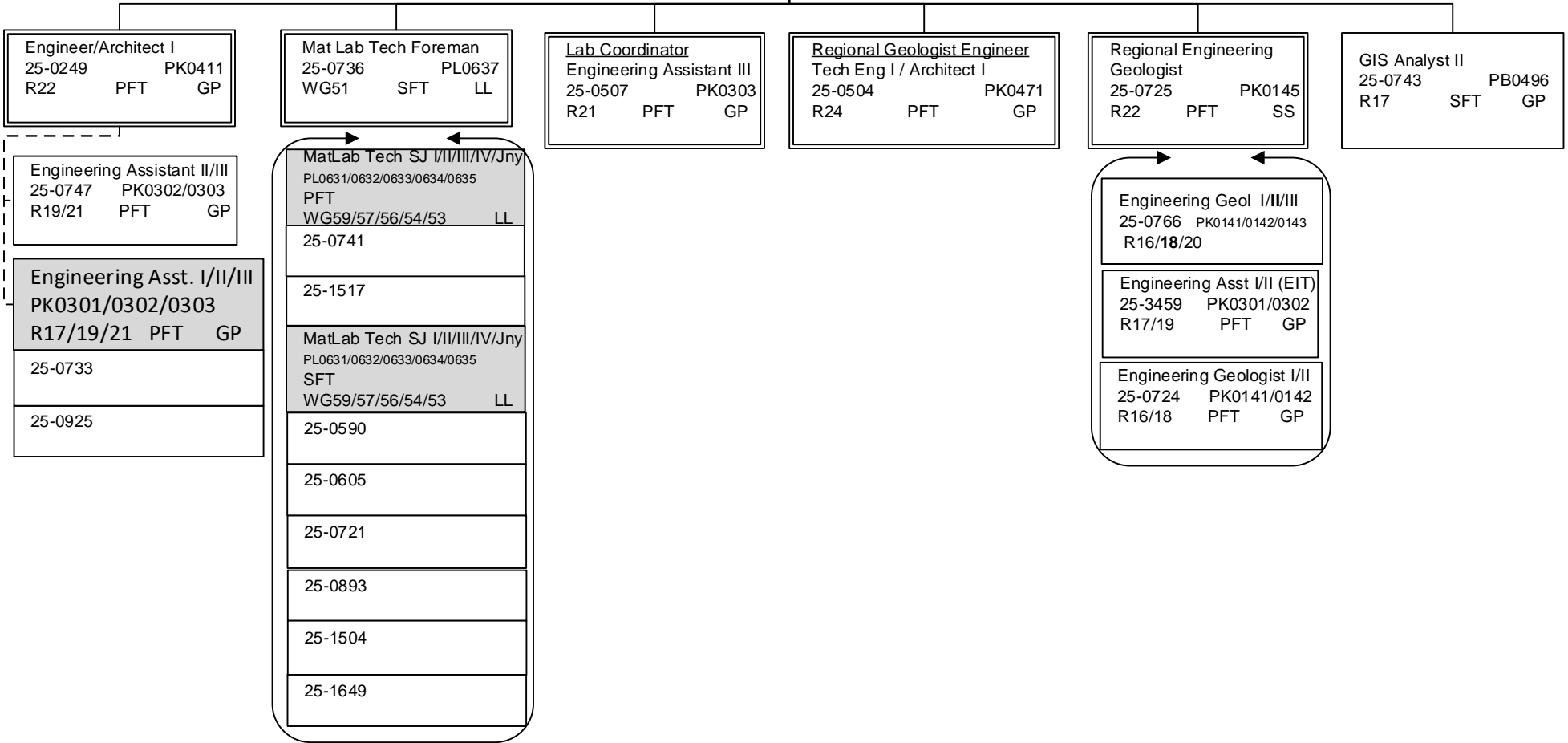
Note: All positions are located in Anchorage.

DEPARTMENT OF TRANSPORTATION AND PUBLIC FACILITIES
 RDU: DESIGN AND CONSTRUCTION
 COMPONENT: CENTRAL DESIGN AND ENGINEERING SERVICES (2298)
 FY2022 GOVERNOR'S PLAN

MATERIALS GROUP CHIEF
 Engineer/Architect IV
 25-0387 PK0414
 R26 PFT SS

Office Assistant II
 25-0495 PB0103
 R10 PFT GP

MATERIALS TOTAL:
 FULL-TIME POSITIONS: 14
 SEASONAL FT POSITIONS: 8
 NON-PERM POSITIONS: 0
 TOTAL 22



Note: All positions are located in Anchorage.

DEPARTMENT OF TRANSPORTATION AND PUBLIC FACILITIES
 RDU: DESIGN AND CONSTRUCTION
 COMPONENT: CENTRAL DESIGN AND ENGINEERING SERVICES (2298)
 FY2022 GOVERNOR'S PLAN

YEAR ROUND COLLEGE INTERNS

NON-PERM TOTAL:	
FULL-TIME POSITIONS:	0
PART-TIME POSITIONS:	0
NON-PERM POSITIONS:	6
TOTAL	6

College Intern I/II (FLEX) 25IN1215 PF0621/0622 R8/9 EE

College Intern I/II/III/IV (FLEX) R8/9/10/12 EE PF0621/0622/0623/0624	
25IN1436	25IN1441
25IN1437	25IN1503
25IN1438	

Note: All positions are located in Anchorage.