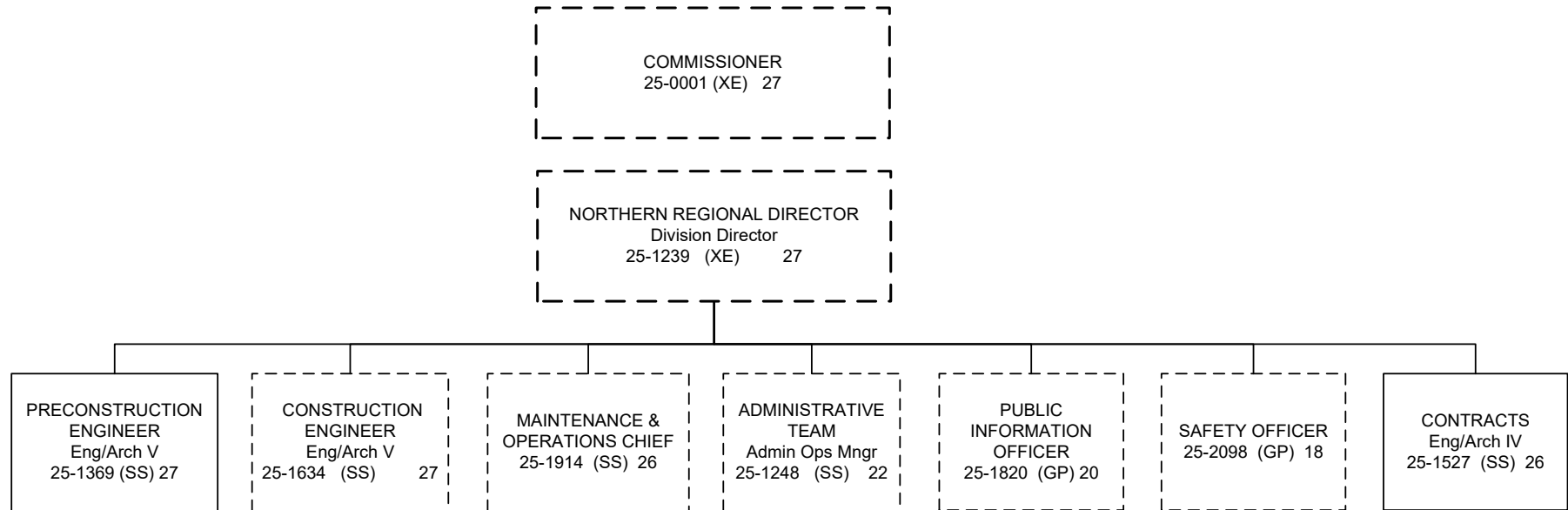
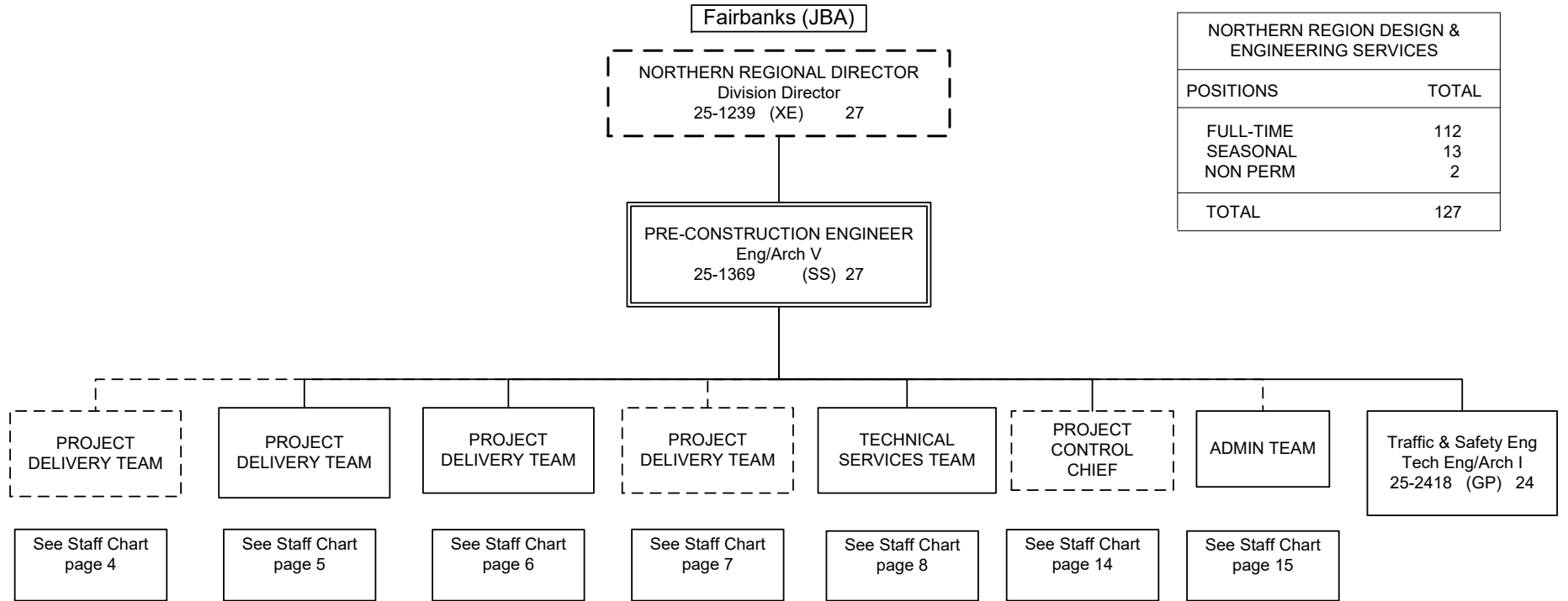
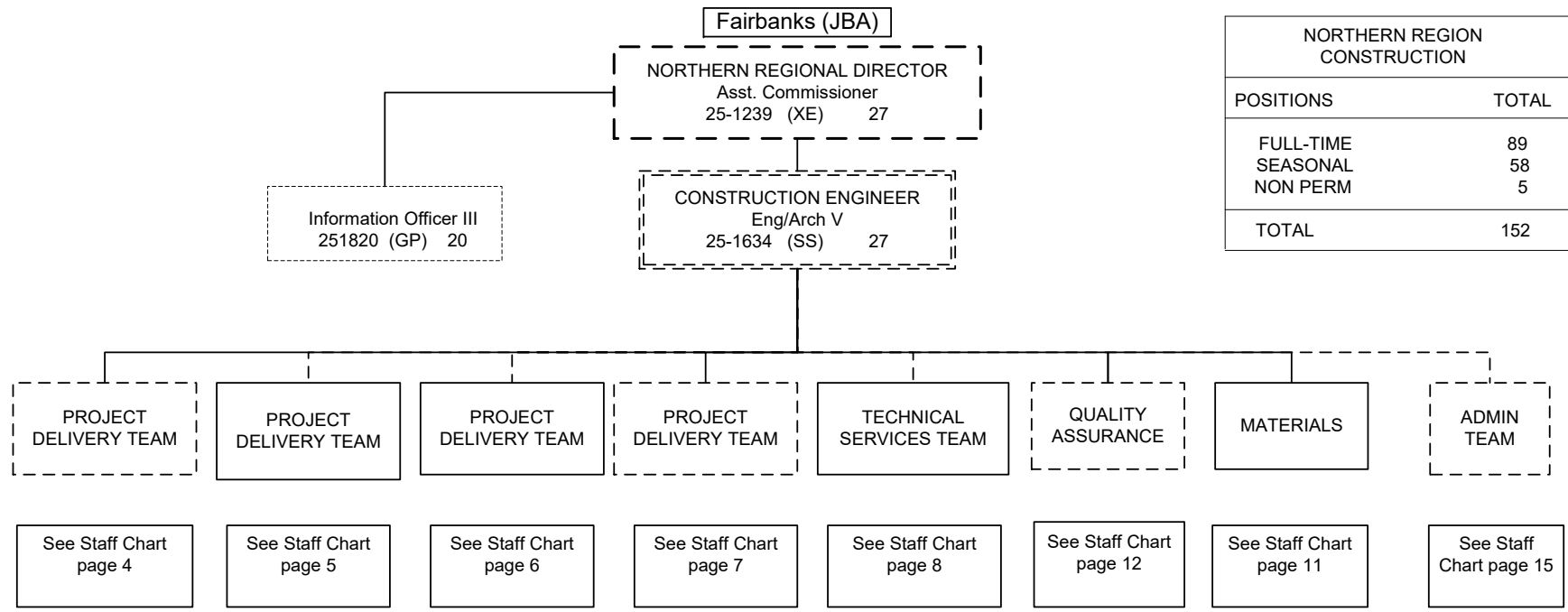
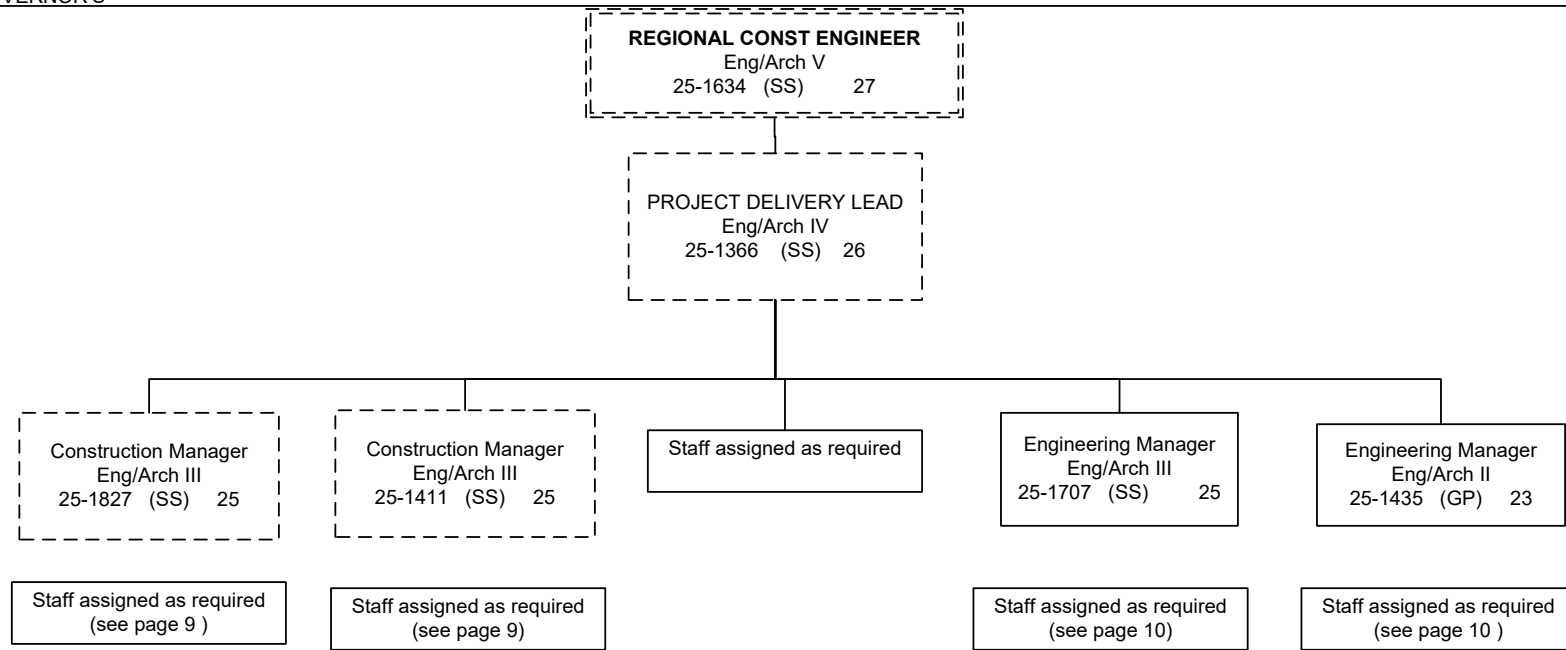


DEPARTMENT OF TRANSPORTATION AND PUBLIC FACILITIES
NORTHERN REGION DESIGN & ENGINEERING SERVICES
FY2022 GOVERNOR'S



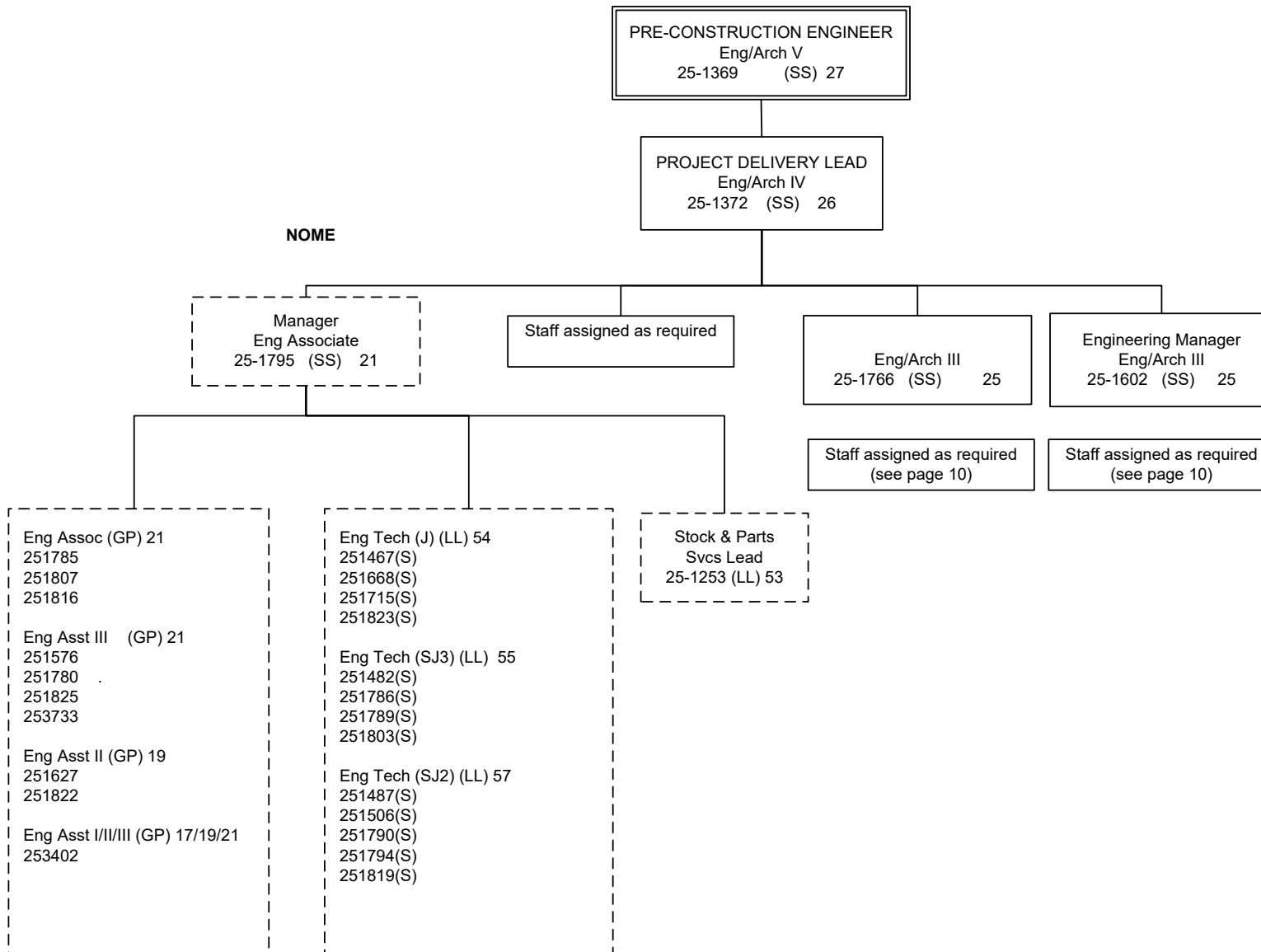






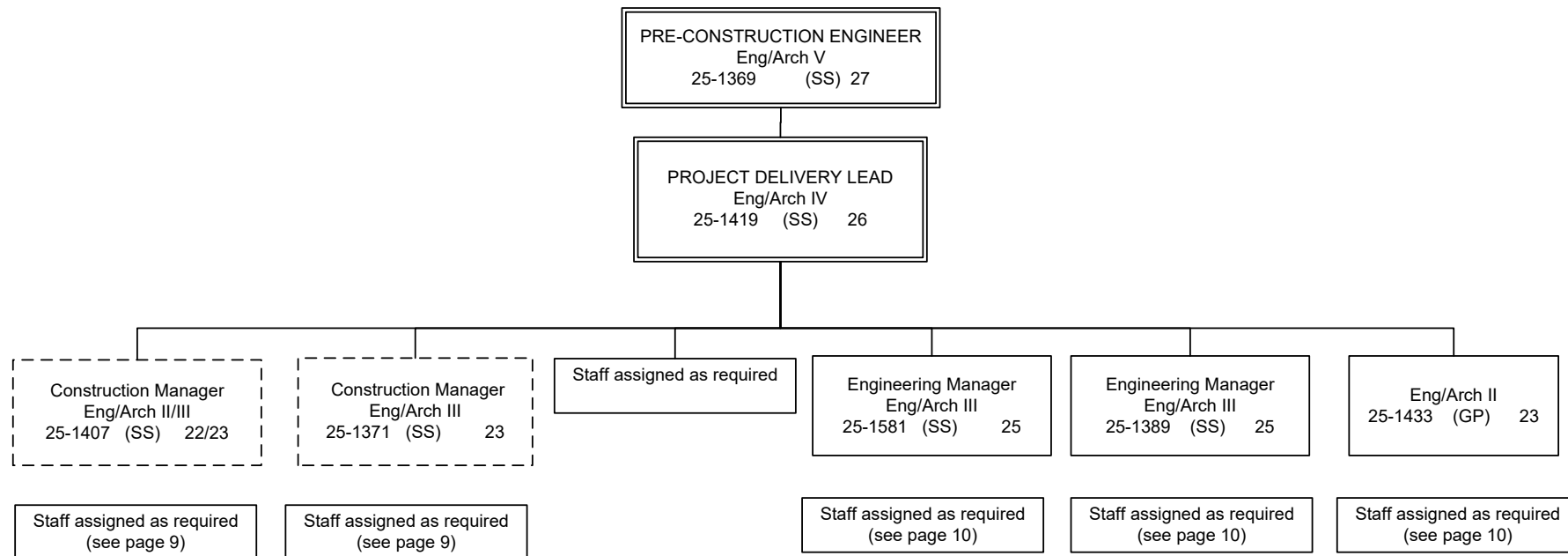
All positions located in Fairbanks unless otherwise noted

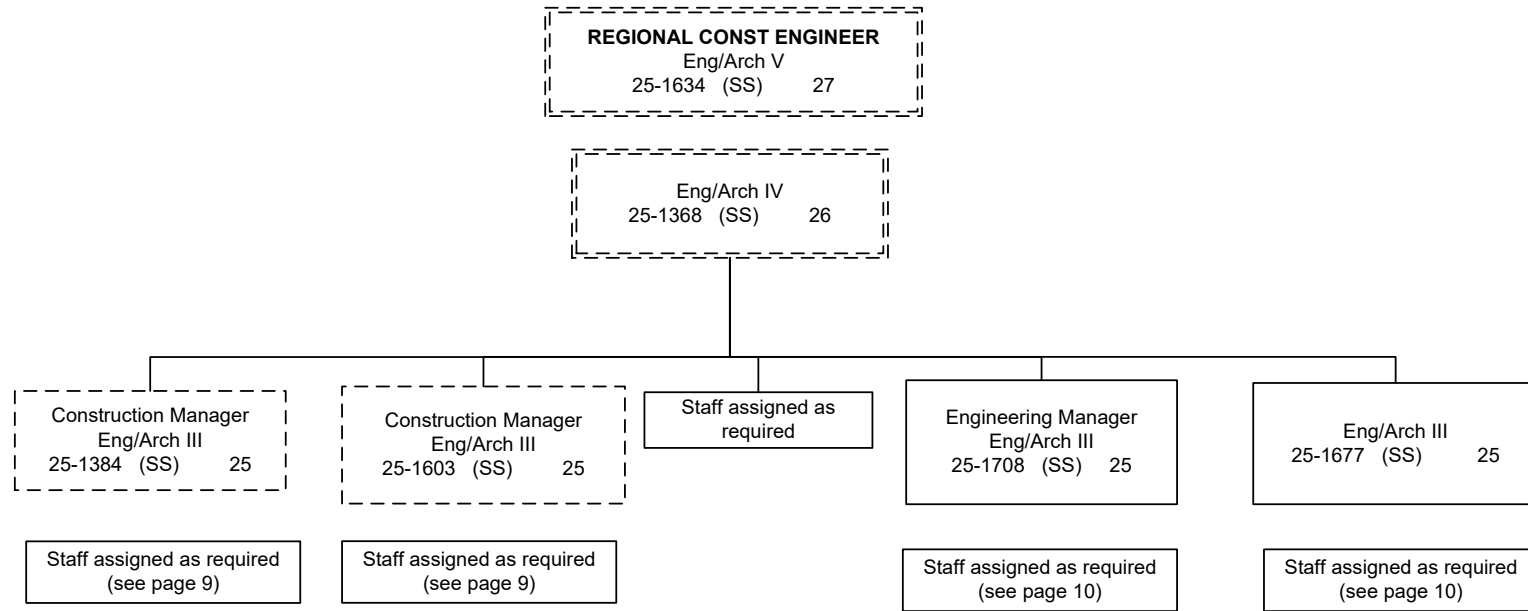
-- line positions not counted
here

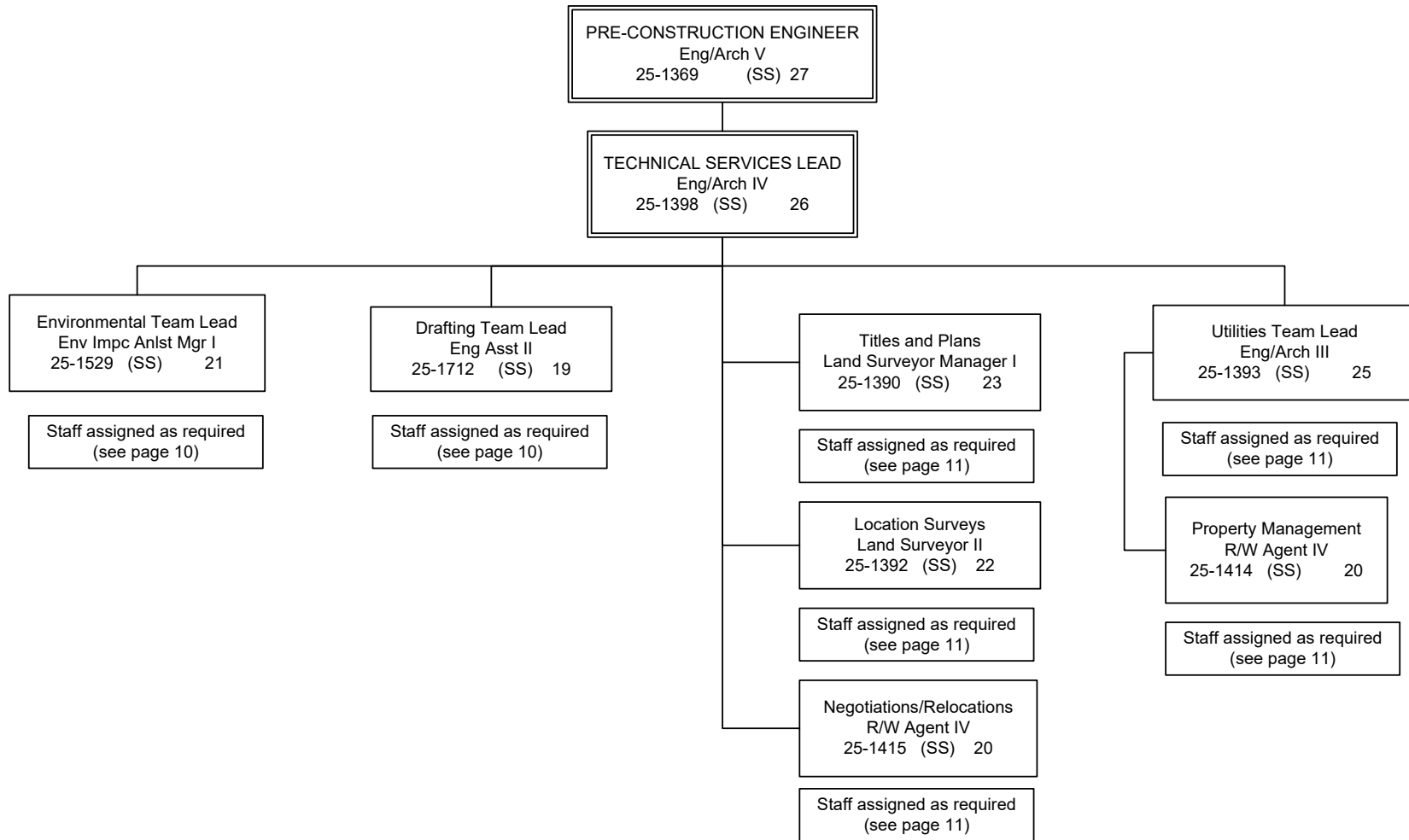


All positions located in Fairbanks unless otherwise noted

-- line positions not counted
here







CONSTRUCTION ENGINEERING STAFF ASSIGNED AS REQUIRED

Eng Associate	(GP)	21
251387		
251405		
251573		
251609		
251705		
251797		
253401		

Eng Asst III	(GP)	21
251412		
251436		
251447		
251455		
251473		
251534		
251578		
251632		
251639		
251656		
251657		
251658		
251742		
251765		
251781		
251782		
251784		
251796		
253730		
253731		
253732		

Eng Technician (J)	(LL)	54
251464(S)		
251465(S)		
251468(S)		
251469(S)		
251474(S)		
251479(S)		
251490(S)		
251524(S)		
251667(S)		
251748(S)		
251758(S)		
251852(S)		
251862(S)		

Eng Technician (SJ3)	(LL)	55
251480(S)		
251484(S)		
251485(S)		
251486(S)		
251492(S)		
251615(S)		
251678(S)		
251762(S)		
251854(S)		
251857(S)		
251875(S)		
251876(S)		

Eng Asst II	(GP)	19
251443		
251449		
251457		
251459		
251541		
251548		
251555		
251557		
251579		
251580		
251582		
251637		
251659		
251660		
251661		
251761		
251812		
251843		
253405		
253521		
253525		
253526		
253527		
253528		

Maint Gen (J)	(LL)	54
251494		

Eng Asst I	(GP)	17
251625		

Eng Technician (SJ2)	(LL)	57
251502(S)	251693(S)	
251507(S)	251700(S)	
251508(S)	251701(S)	
251511(S)	251710(S)	
251518(S)	251745(S)	
251519(S)	251787(S)	
251525(S)	251880(S)	
251566(S)		
251569(S)		
251596(S)		
251684(S)		
251688(S)		
251689(S)		

Eng Tech	(LL)	59/57
Interns		
25IN1005		
25IN1006		
25IN1007		
25IN1008		
25IN1014		

All positions located in Fairbanks unless otherwise noted

Legend
 J = Journey
 SJ = SubJourney

DESIGN ENGINEERING STAFF ASSIGNED AS REQUIRED

Eng Arch I/II (GP) 22/23
 253607

Eng Arch I (GP) 22
 251382
 251432
 251437
 251446
 251531
 253452
 253608

Env Impact Analysts III (GP) 19
 251536
 251771
 253593

Env Impact Analysts II/III (GP) 17/19
 252410

Env Impact Analysts II (GP) 17
 251604

Env Impact Analysts I/II/III (GP) 15/17/19
 251426
 251532
 251545
 251556
 251850

Eng Asst III (GP) 21
 250165
 251394
 251530
 251537
 251599
 251607
 253449
 253453

Drafting Tech III (GP) 15
 251832
 251559
 251558
 251770

Eng Asst I/II (GP) 17/19
 251538
 251542
 251546
 251622
 251704
 251777
 251802

Eng Asst I/II/III (GP) 17/19/21
 250202

College Intern I/II/III/IV (EE)8/9/10/12
 25IN1202
 25IN1204

Eng Asst III/Eng Associate/
 Eng- Arch I (GP) 2121//22
 251540
 251570
 251731

ROW & UTILITIES STAFF ASSIGNED AS REQUIRED

Eng Arch I (GP) 22
 251396

Eng Arch I (GP) 22
 251434

Eng Asst I/II (GP) 17/19
 251683

Survey – Lead (LL) 53
 251612s
 251871s

Survey – J (LL) 54
 251500s
 251565s

Survey – SJ (LL) 56
 251694s
 251682s

Land Surveyor I (GP) 21
 251740
 251768

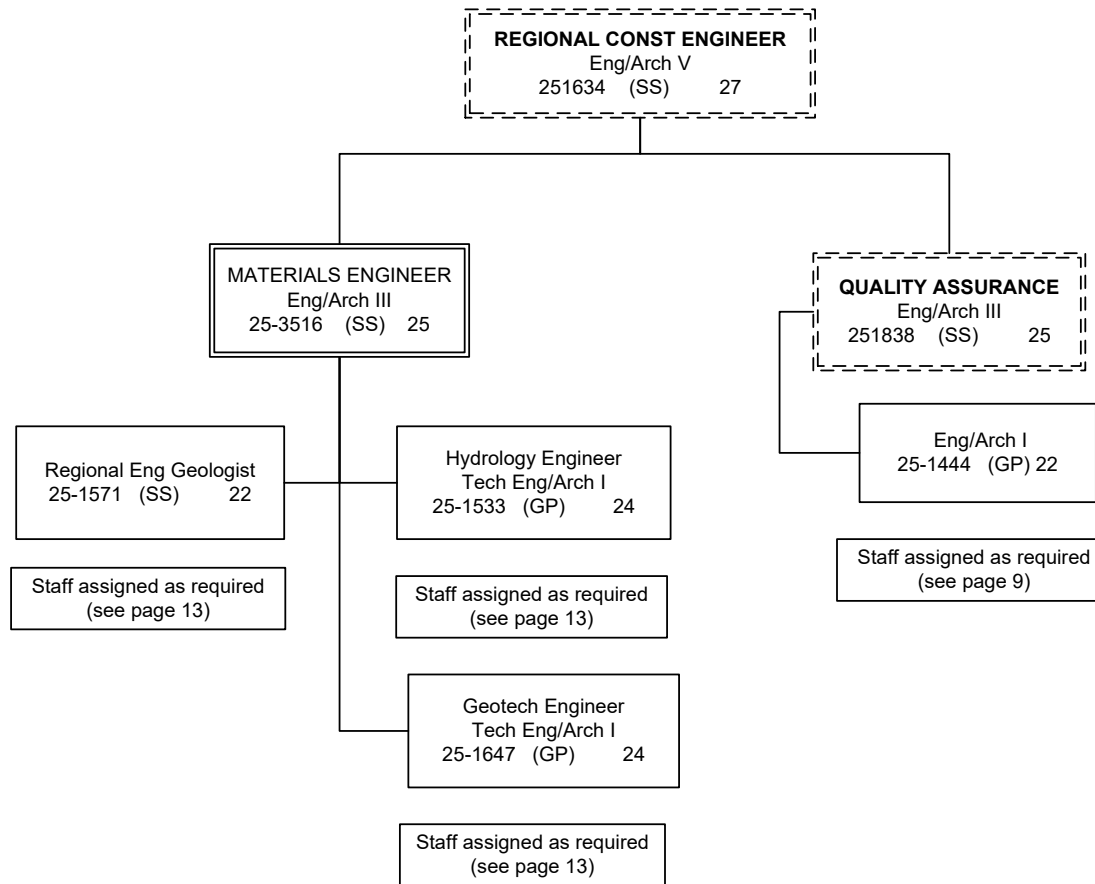
ROW Agent III (GP) 18
 251388
 251391
 251399
 251416
 251460
 251544
 251572
 251729

Eng Asst III (GP) 21
 251406
 251409
 251421
 251611
 253450

ROW Agent II (GP) 16
 251423

ROW Agent I/II (GP) 14/16
 251400
 253694

ROW Asst (GP) 12
 251425



MATERIALS & QUALITY ASSURANCE STAFF ASSIGNED AS REQUIRED

Eng/Arch I (GP) 22
251551
253574

Eng Asst III (GP) 21
251439
251441

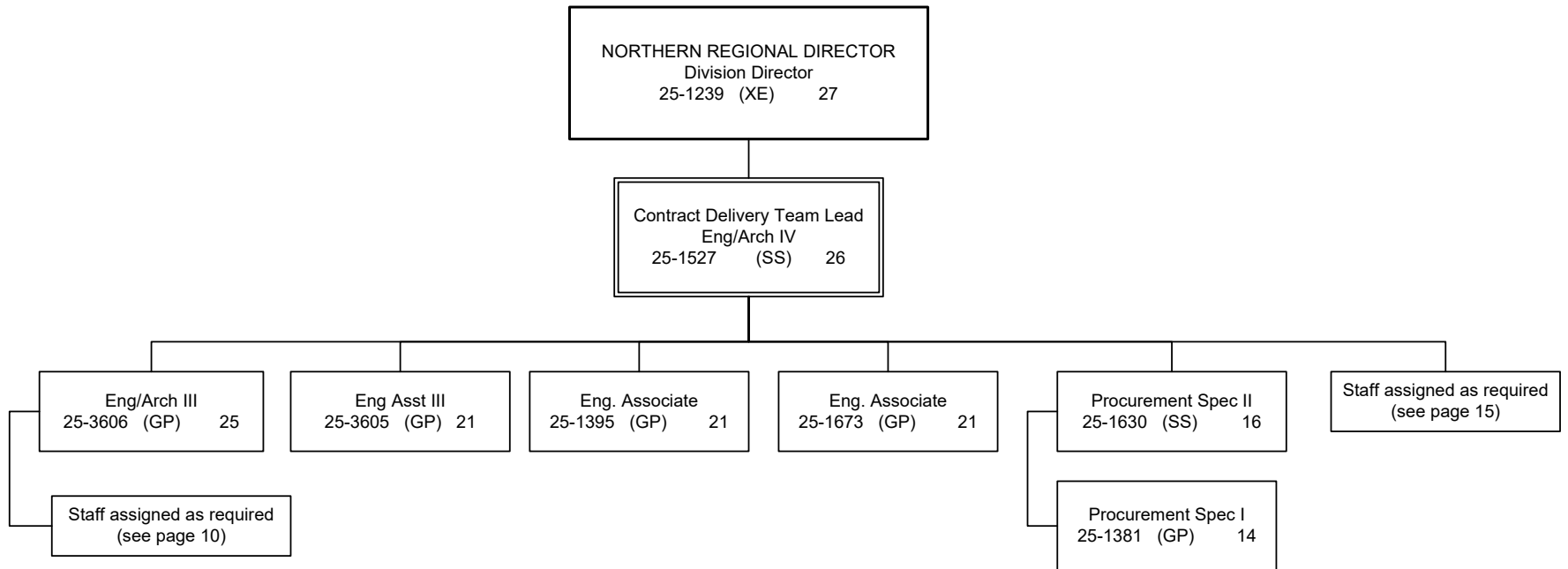
Eng Geologist II (GP) 18
250732
251635
251636

Eng Geologist I/II (GP) 16/18
251624

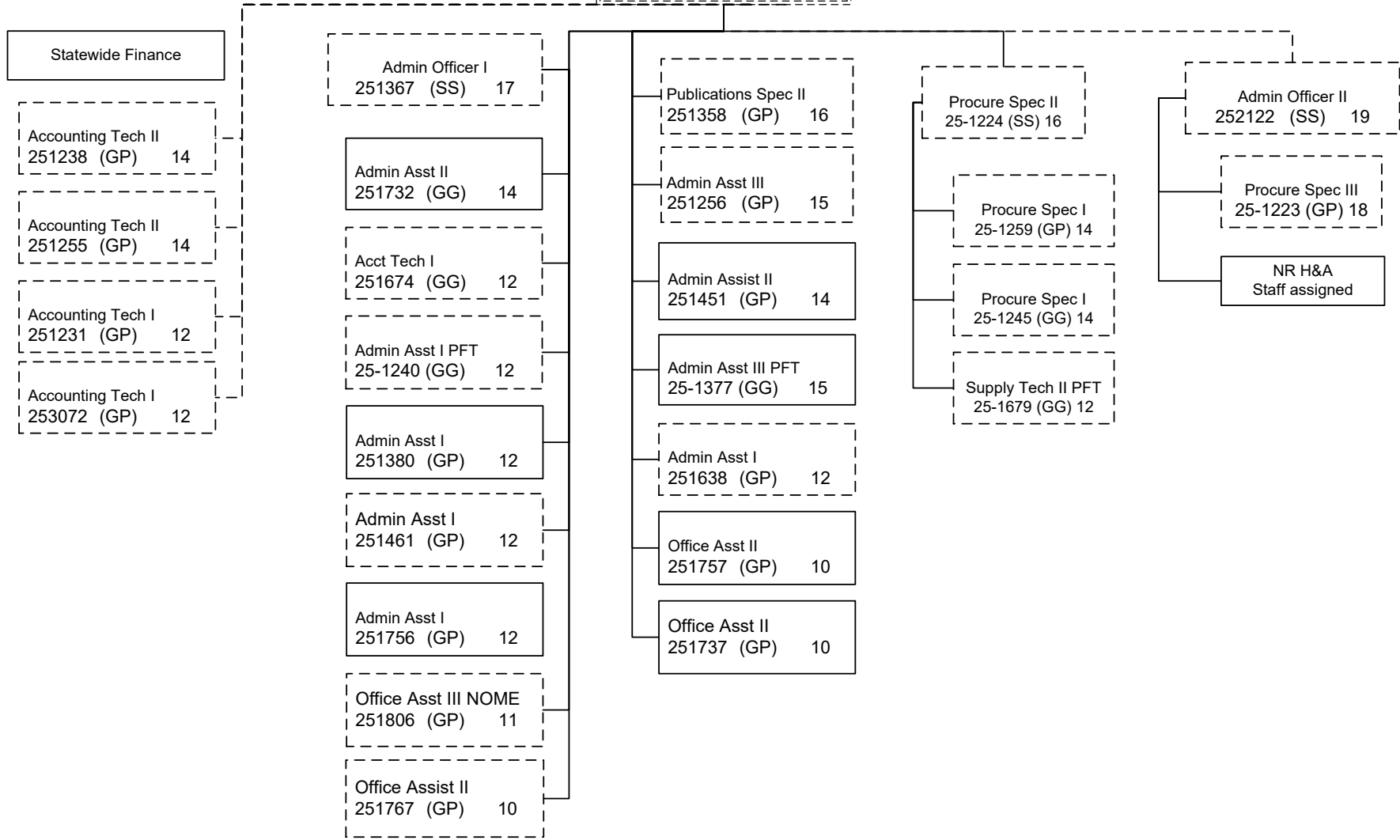
Driller – Journey (LL) 53
250723s
251642
251645
251775s

Driller – SJ (LL) 54
250247
251491s
251644s

Mat Lab Tech I/II/III/IV/J (LL)
59/57/56/54/53
251643s
251648s
251776s



Admin Team Lead
Admin Operations Mngr
251248 (SS) 22



*Task assigned to Contracts

