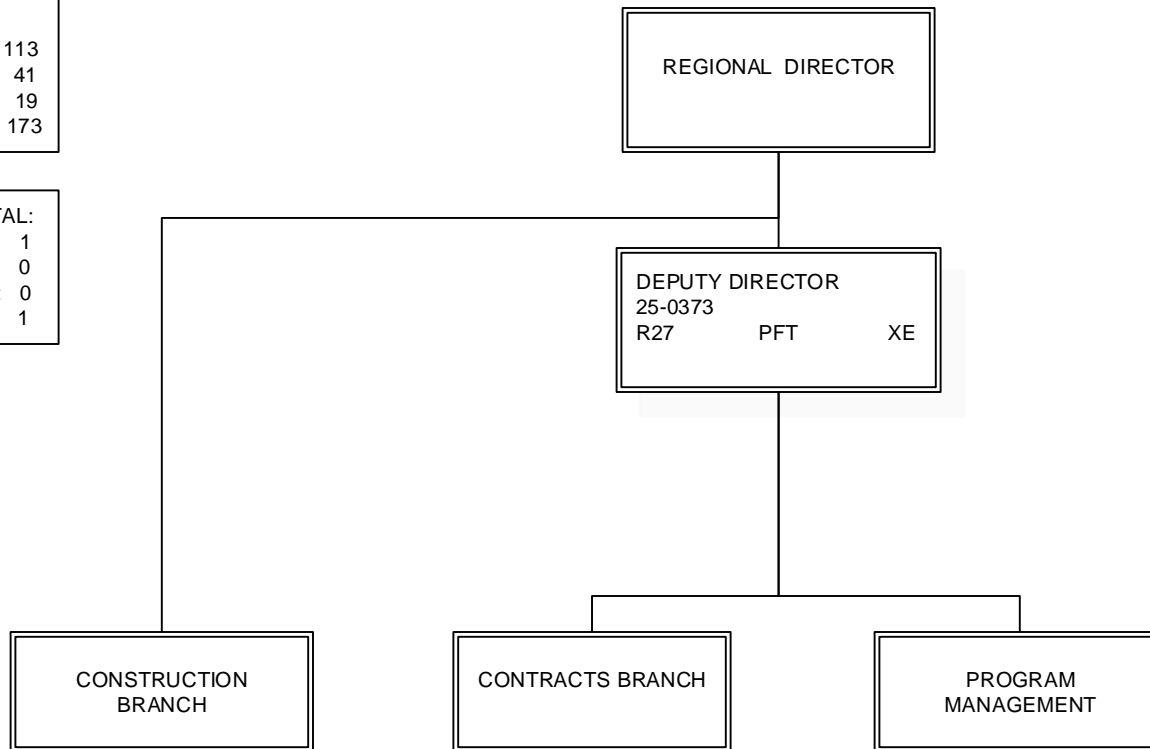


DEPARTMENT OF TRANSPORTATION & PUBLIC FACILITIES  
RDU: DESIGN, ENGINEERING AND CONSTRUCTION  
COMPONENT: CENTRAL REGION CONSTRUCTION AND CIP SUPPORT (2293)(T04H)  
FY2022 GOVERNOR'S PLAN

COMPONENT TOTAL:  
FULLTIME POSITIONS: 113  
PARTTIME POSITIONS: 41  
NON PERM POSITIONS: 19  
TOTAL 173

REGIONAL OFFICE TOTAL:  
FULLTIME POSITIONS: 1  
PARTTIME POSITIONS: 0  
NON PERM POSITIONS: 0  
TOTAL 1



Note: All positions are located in Anchorage.

DEPARTMENT OF TRANSPORTATION & PUBLIC FACILITIES  
 RDU: DESIGN, ENGINEERING AND CONSTRUCTION  
 COMPONENT: CENTRAL REGION CONSTRUCTION AND CIP SUPPORT (2293)(T04H)  
 FY2022 GOVERNOR'S PLAN

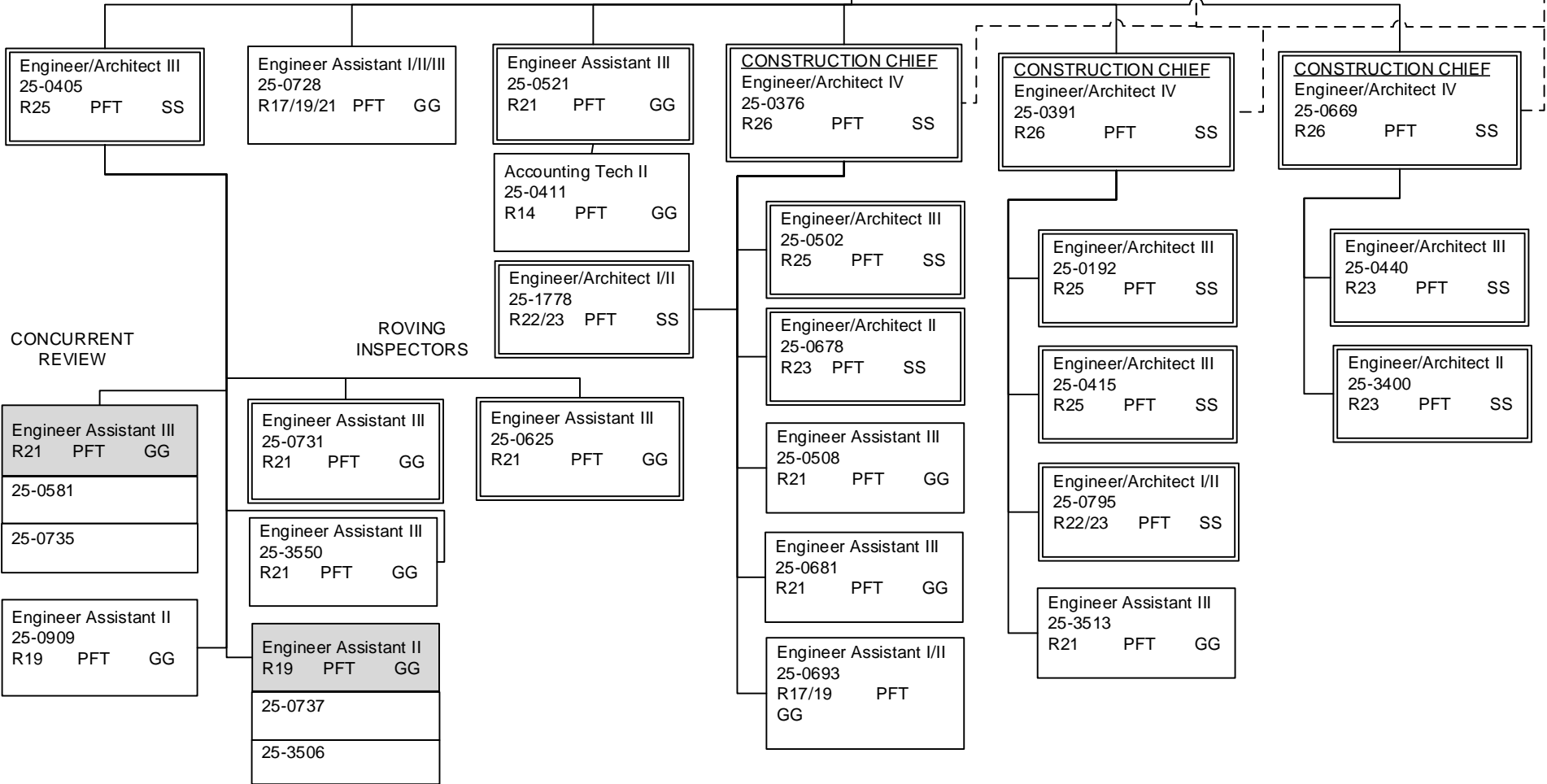
CONSTRUCTION TOTAL:  
 FULLTIME POSITIONS: 93  
 PARTTIME POSITIONS: 41  
 NON PERM POSITIONS: 19  
 TOTAL 153

**REGIONAL CONSTRUCTION ENGINEER**  
 Engineer/Architect V  
 25-0408  
 R27 PFT SS

Administrative Asst. III  
 25-0494  
 R15 PFT GG

Office Assistant II  
 R10 PFT GG  
 25-0385  
 25-0461

QUALITY ASSURANCE



ADDITIONAL STAFF ASSIGNED AS NEEDED FROM  
 POSITION LISTING ON NEXT PAGE

Note: All positions are located in Anchorage.

POSITIONS REPORT TO ENGINEER/  
 ARCHITECT POSITIONS ON PREVIOUS PAGE

Engineering Associate R21 PFT GG
25-0506
25-0509
25-0514
25-0518
25-0758

Engineering Assistant III R21 PFT GG	
25-0446	25-0688
25-0465	25-0694
25-0510	25-0759
25-0512	25-0799
25-0579	25-3399
25-0633	25-3514
25-0674	25-3515

Engineering Assistant II R19 PFT GG
25-0654
25-0684

Engineering Assistant I/II (FLEX) R17/19 PFT GG	
25-0403	25-0653
25-0513	25-0696
25-0516	25-0701
25-0517	25-0760
25-0519	25-0767
25-0520	25-0804
25-0522	25-0807
25-0523	25-0809
25-0524	25-0811
25-0525	25-0814
25-0526	25-0815
25-0527	25-0822
25-0528	25-3403
25-0532	25-3404
25-0533	25-3503
25-0534	25-3504
25-0535	25-3505
25-0536	25-3507
25-0641	25-3508
25-0642	25-3509
25-0650	

Eng Tech Journey WG54 PPT LL
25-0539
25-0540
25-0542
25-0552
25-0553 Soldotna
25-0554
25-0555
25-0559 Wasilla
25-0560
25-0563
25-0564
25-0828
25-0829 Wasilla
25-0832
25-0833

Eng Tech SJ III WG55 PPT LL
25-0562
25-0570
25-0571
25-0572 Wasilla
25-0574
25-0577
25-0604
25-0606
25-0836 Wasilla
25-0896

Eng Tech SJ II WG57 PPT LL
25-0547
25-0548
25-0586
25-0587
25-0591 Wasilla
25-0592
25-0593
25-0594 Wasilla
25-0595 Wasilla
25-0601
25-0870
25-0875
25-0877
25-0907
25-0956
25-0957

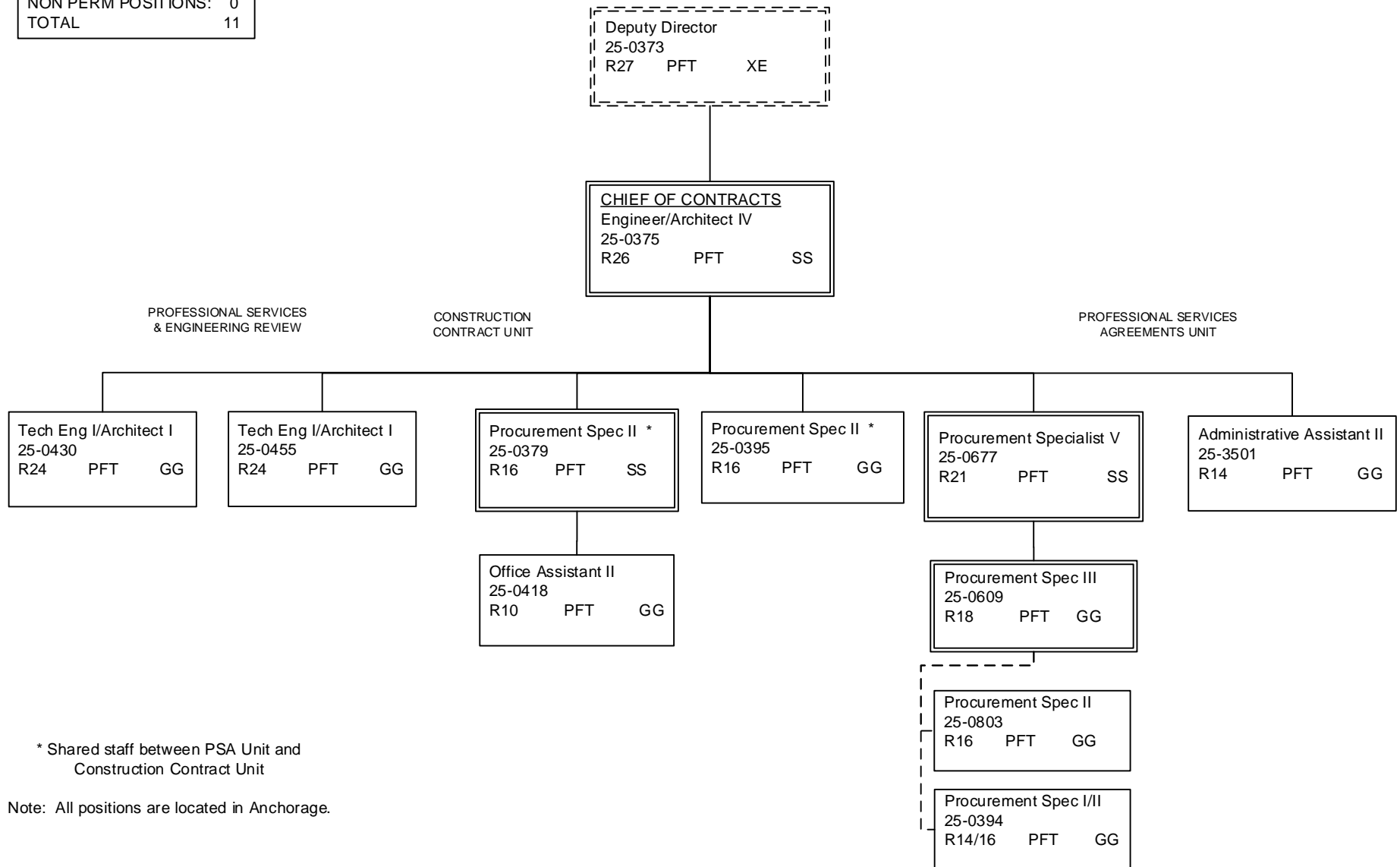
Eng Tech SJ I/II WG57/59 NP LL
25N0916
25N0917
25N0918
25N0919
25N0920
25N0921
25N0922
25N0923
25N0924
25N0925

Eng Tech SJ I WG59 NP LL
25N09022 Wasilla
25N09023
25N09024 Wasilla
25N09085
25N09087
25N09088
25N09089
25N09090
25N09091 Wasilla

Note: All positions are located in Anchorage except where noted.

DEPARTMENT OF TRANSPORTATION & PUBLIC FACILITIES  
 RDU: DESIGN, ENGINEERING AND CONSTRUCTION  
 COMPONENT: CENTRAL REGION CONSTRUCTION AND CIP SUPPORT (2293)(T04H)  
 FY2022 GOVERNOR'S PLAN

CONTRACTS TOTAL:	
FULLTIME POSITIONS:	11
PARTTIME POSITIONS:	0
NON PERM POSITIONS:	0
TOTAL	11

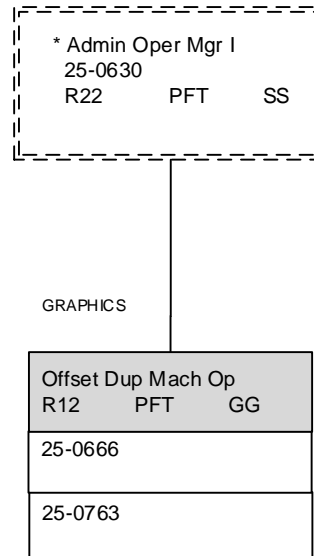


\* Shared staff between PSA Unit and Construction Contract Unit

Note: All positions are located in Anchorage.

DEPARTMENT OF TRANSPORTATION & PUBLIC FACILITIES  
 RDU: DESIGN, ENGINEERING AND CONSTRUCTION  
 COMPONENT: CENTRAL REGION CONSTRUCTION AND CIP SUPPORT (2293)(T04H)  
 FY2022 GOVERNOR'S PLAN

GRAPHICS TOTAL:	
FULLTIME POSITIONS:	2
PARTTIME POSITIONS:	0
NON PERM POSITIONS:	0
TOTAL	2

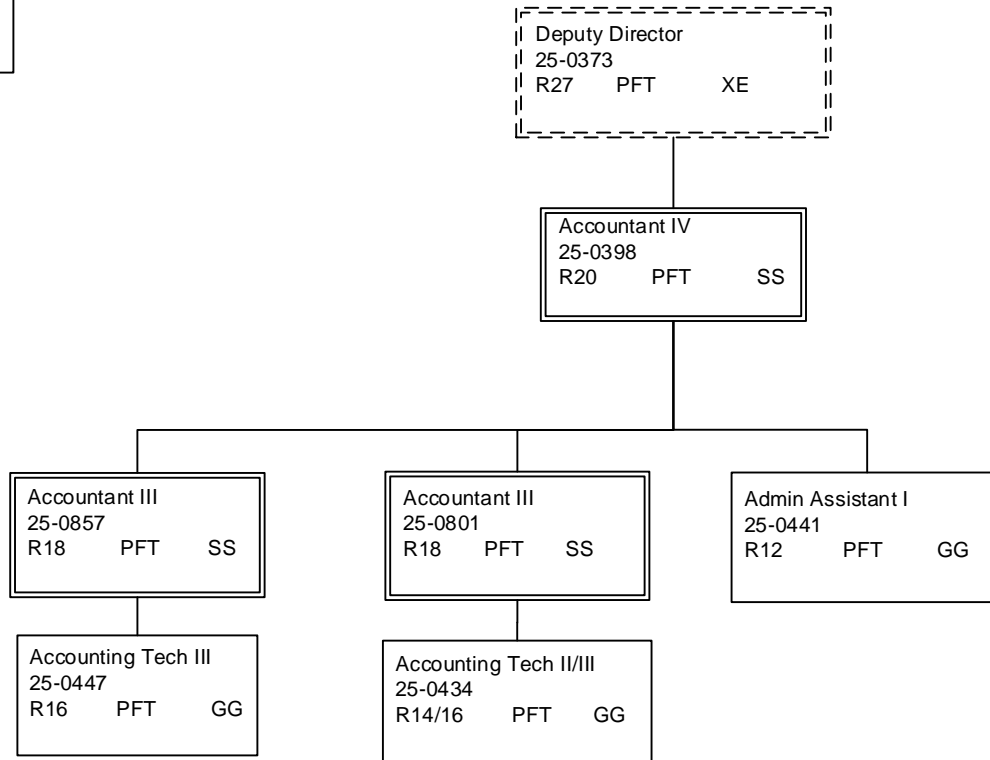


\*PCN 25-0630 is budgeted in the Central Region Support Services budget component

Note: All positions are located in Anchorage.

DEPARTMENT OF TRANSPORTATION & PUBLIC FACILITIES  
 RDU: DESIGN, ENGINEERING AND CONSTRUCTION  
 COMPONENT: CENTRAL REGION CONSTRUCTION AND CIP SUPPORT (2293)(T04H)  
 FY2022 GOVERNOR'S PLAN

PROGRAM MANAGEMENT:	
FULLTIME POSITIONS:	6
PARTTIME POSITIONS:	0
NON PERM POSITIONS:	0
TOTAL	6



Note: All positions are located in Anchorage.