

State of Alaska FY2022 Governor's Operating Budget

Department of Transportation/Public Facilities Northern Region Construction and CIP Support Component Budget Summary

Component: Northern Region Construction and CIP Support

Contribution to Department's Mission

Preserve and improve the transportation system in Alaska and protect the health and safety of Alaska's people by administering the construction of safe, environmentally sound, reliable, and cost-effective highways, airports, and buildings.

Core Services

- Review projects for constructability.
- Provide bidding support services.
- Administer construction contracts.
- Provide information to the public concerning construction projects.
- Provide support for emergency/disaster response when damages to transportation infrastructure require contractor repairs.
- Conduct field inspection and materials testing.
- Close out projects.
- Coordinate with the Civil Rights Office in the administration of the Disadvantaged Business Enterprises program.
- Administer an apprentice program through the Department of Labor and Workforce Development.
- Administer state and federal transportation-related grants.

Major Component Accomplishments in 2020

- Provided construction administration for 37 active construction projects (27 awarded, 10 continued from previous season) across 13 communities in the Northern Region, overseeing \$191,600.0 in contractor payments. \$48,000.0 of these payments were made for improvements in remote Alaska communities including Kivalina, Kotlik, Nome, Holy Cross, Nulato, and Utqiagvik (formerly Barrow).
- Administered \$82,000.0 in construction project work in the Fairbanks area including continued work on the University Avenue/Geist Road, McGrath Road, Chena Hot Springs Road, and the Richardson Highway projects.
- Completed rehabilitation of the Tok Cutoff Mile Post 38-50 project and Kivalina School Site Access Road, and began additional phases for University Avenue Rehabilitation (all projects delivered using Construction Manager General Contractor process).
- Began construction and paving of the farthest north section of the Dalton Highway, near Deadhorse.
- Continued integration of design and construction staff into team structures to provide services across organizational boundaries/budget components and work cross-functionally to deliver products and focused priorities.
- Repaved 73.4 lanes miles, reconstructed 146.7 lane miles, paved 47.0 lane miles of gravel road, and added 13.0 lane miles to roads and highways.
- Closed out 27 construction projects.

Key Component Challenges

- Maintaining compliance with the United States Environmental Protection Agency and Alaska Department of Environmental Conservation stormwater monitoring responsibilities and requirements.
- Compliance with Federal Highway Administration Work Zone Management requirements across rural and urban settings.
- Effectively identifying and resolving claims and unfunded liabilities across the division's construction program – in order to fully utilize federal and non-state funding sources to deliver products and services.
- Increasing employee proficiency and their ability to function efficiently while fully leveraging statewide accounting and procurement systems.
- Expanding federal oversight regarding pedestrian traffic control and American with Disabilities Act compliance.
- Reestablishing materials testing accreditation within regional facilities and staff resources.

COVID-19 Response and Telework Challenges

- Administering remote construction projects while complying with statewide and local community travel restrictions
- Social distancing requirements limit in-person training opportunities for required personnel certifications.
- In conjunction with the Associated General Contractors, developed and implemented a COVID-19 Management Plan for contractor and Department staff operations.
- Effectively leveraging technology, remote working resources, and electronic contract administration software (SiteManager) to continue delivering core services.

Significant Changes in Results to be Delivered in FY2022

- Continue to identify efficiencies across organizational and budget component boundaries for delivery of capital projects. The division will continue to demonstrate an approach to projects that focuses on cross-functional roles and collaborative decision-making that includes teaming with other divisions and project stakeholders during decision-making processes.
- Continue implementation of AASHTOWare Project, and the use of drones, Global Positioning System, three-dimensional and virtually augmented modeling, and other tools to gain efficiencies in construction administration and to further utilize e-Construction technologies.

Statutory and Regulatory Authority

AS 02 Aeronautics
AS 08 Business and Professions
AS 19 Highways and Ferries
AS 34 Property
AS 35 Public Buildings, Works
AS 36 Public Contracts
AS 44 State Government
USC CFR 14 Aeronautics
USC CFR 23 Highways
USC CFR 41 Contracts
USC CFR 43 Lands
USC CFR 49 Transportation

Contact Information
<p>Contact: Michael Lund, P.E., Construction Engineer Phone: (907) 451-5067 E-mail: michael.lund@alaska.gov</p>

Northern Region Construction and CIP Support Personal Services Information				
Authorized Positions			Personal Services Costs	
	FY2021 Management Plan	FY2022 Governor		
			Annual Salaries	10,464,610
Full-time	89	89	COLA	101,172
Part-time	58	58	Premium Pay	1,345,544
Nonpermanent	5	5	Annual Benefits	6,675,421
			<i>Less 4.95% Vacancy Factor</i>	<i>(920,547)</i>
			Lump Sum Premium Pay	0
Totals	152	152	Total Personal Services	17,666,200

Position Classification Summary					
Job Class Title	Anchorage	Fairbanks	Juneau	Others	Total
Accountant III	0	1	0	0	1
Accountant IV	0	1	0	0	1
Accounting Technician I	0	1	0	0	1
Accounting Technician III	0	3	0	0	3
Administrative Assistant I	0	2	0	0	2
Administrative Assistant II	0	1	0	0	1
Administrative Officer I	0	1	0	0	1
E/T Subjrnj I	0	5	0	0	5
E/T Subjrnj II	0	20	0	5	25
E/T Subjrnj III	0	12	0	4	16
Eng Tech Jrny	0	13	0	4	17
Engineer/Architect I	0	1	0	0	1
Engineer/Architect III	0	7	0	0	7
Engineer/Architect IV	0	2	0	0	2
Engineer/Architect V	0	1	0	0	1
Engineering Assistant I	0	1	0	0	1
Engineering Assistant II	0	24	0	2	26
Engineering Assistant III	0	21	0	5	26
Engineering Associate	0	7	0	4	11
Information Officer III	0	1	0	0	1
Maint Gen Jrny	0	1	0	0	1
Office Assistant II	0	1	0	0	1
Office Assistant III	0	0	0	1	1
Totals	0	127	0	25	152

Component Detail All Funds
Department of Transportation/Public Facilities

Component: Northern Region Construction and CIP Support (2295)
RDU: Design, Engineering and Construction (526)

Non-Formula Component

	FY2020 Actuals	FY2021 Conference Committee	FY2021 Authorized	FY2021 Management Plan	FY2022 Governor	FY2021 Management Plan vs FY2022 Governor	
71000 Personal Services	19,817.5	17,741.7	17,741.7	17,568.4	17,666.2	97.8	0.6%
72000 Travel	13.7	65.3	36.7	36.7	36.7	0.0	0.0%
73000 Services	479.9	253.1	253.1	253.1	524.9	271.8	107.4%
74000 Commodities	325.2	133.2	133.2	133.2	133.2	0.0	0.0%
75000 Capital Outlay	75.2	0.0	0.0	0.0	0.0	0.0	0.0%
77000 Grants, Benefits	0.0	0.0	0.0	0.0	0.0	0.0	0.0%
78000 Miscellaneous	0.0	0.0	0.0	0.0	0.0	0.0	0.0%
Totals	20,711.5	18,193.3	18,164.7	17,991.4	18,361.0	369.6	2.1%
Fund Sources:							
1001 CBR Fund (UGF)	0.0	40.1	40.1	40.1	0.0	-40.1	-100.0%
1004 Gen Fund (UGF)	161.0	120.2	120.2	120.2	160.3	40.1	33.4%
1007 I/A Rcpts (Other)	6.2	0.0	0.0	0.0	0.0	0.0	0.0%
1061 CIP Rcpts (Other)	20,544.3	18,033.0	18,004.4	17,831.1	18,200.7	369.6	2.1%
Unrestricted General (UGF)	161.0	160.3	160.3	160.3	160.3	0.0	0.0%
Designated General (DGF)	0.0	0.0	0.0	0.0	0.0	0.0	0.0%
Other Funds	20,550.5	18,033.0	18,004.4	17,831.1	18,200.7	369.6	2.1%
Federal Funds	0.0	0.0	0.0	0.0	0.0	0.0	0.0%
Positions:							
Permanent Full Time	67	90	90	89	89	0	0.0%
Permanent Part Time	80	58	58	58	58	0	0.0%
Non Permanent	5	5	5	5	5	0	0.0%

Change Record Detail - Multiple Scenarios with Descriptions
Department of Transportation/Public Facilities

Component: Northern Region Construction and CIP Support (2295)
RDU: Design, Engineering and Construction (526)

Scenario/Change Record Title	Trans Type	Totals	Personal Services	Travel	Services	Commodities	Capital Outlay	Grants, Benefits	Miscellaneous	Positions		NP
										PFT	PPT	
***** Changes From FY2021 Conference Committee To FY2021 Authorized *****												
Conference Committee												
	ConfCom	18,193.3	17,741.7	65.3	253.1	133.2	0.0	0.0	0.0	90	58	5
1001 CBR Fund		40.1										
1004 Gen Fund		120.2										
1061 CIP Rcpts		18,033.0										
Eliminate Restoration of Non-UGF Travel Reductions from FY2020												
	Veto	-28.6	0.0	-28.6	0.0	0.0	0.0	0.0	0.0	0	0	0
1061 CIP Rcpts		-28.6										
This is a legislative restoration of previous year vetoes. Due to the COVID-19 Travel Mandate, the Department will continue to manage with available funds.												
Subtotal		18,164.7	17,741.7	36.7	253.1	133.2	0.0	0.0	0.0	90	58	5
***** Changes From FY2021 Authorized To FY2021 Management Plan *****												
Transfer Engineering Associate (25-1633) to Statewide Design & Engineering Services for Program Support												
	Trout	-173.3	-173.3	0.0	0.0	0.0	0.0	0.0	0.0	-1	0	0
1061 CIP Rcpts		-173.3										
Transfer full-time Engineering Associate (25-1633), range 21, located in Fairbanks to Statewide Design and Engineering Services to support program workload.												
Statewide Research has lacked project management support due to staff restructuring, loss of staff and reassignment of positions to other priorities. The transfer will support the significant need for research engineering staff to manage program workload.												
Subtotal		17,991.4	17,568.4	36.7	253.1	133.2	0.0	0.0	0.0	89	58	5
***** Changes From FY2021 Management Plan To FY2022 Governor *****												
FY2022 Salary Adjustments												
	SalAdj	97.8	97.8	0.0	0.0	0.0	0.0	0.0	0.0	0	0	0
1061 CIP Rcpts		97.8										
FY2022 1% COLA for ASE/General Government (GG/GP/GY/GZ): \$97.8.												
Transfer from Human Resources to Fund Employee Based Rates - DOPLR/IRIS HRM												
	Trin	81.3	0.0	0.0	81.3	0.0	0.0	0.0	0.0	0	0	0
1061 CIP Rcpts		81.3										
Transfer from Human Resources component to fund Division of Personnel and Labor Relations and Integrated Resource Information System Human Resource Management rates which have been incorporated into individual positions.												

Change Record Detail - Multiple Scenarios with Descriptions
Department of Transportation/Public Facilities

Component: Northern Region Construction and CIP Support (2295)

RDU: Design, Engineering and Construction (526)

Scenario/Change Record Title	Trans Type	Totals	Personal Services	Travel	Services	Commodities	Capital Outlay	Grants, Benefits	Miscellaneous	Positions		NP
										PFT	PPT	
Transfer from Information Systems and Services for Employee Based Rates Funding - OIT												
1061 CIP Rcpts	Trin	190.5	0.0	0.0	190.5	0.0	0.0	0.0	0.0	0	0	0
Transfer from Information Systems and Services component to cover Office of Information Technology rates which have been incorporated into individual positions.												
Fund Source Adjustment of CBRF to UGF												
1001 CBR Fund	FndChg	-40.1	0.0	0.0	0.0	0.0	0.0	0.0	0.0	0	0	0
1004 Gen Fund		40.1										
Replace Constitutional Budget Reserve Fund (CBRF) used as a one-time funding mechanism in FY2021.												
Totals		18,361.0	17,666.2	36.7	524.9	133.2	0.0	0.0	0.0	89	58	5

Line Item Detail (1676)
Department of Transportation/Public Facilities
Travel

Component: Northern Region Construction and CIP Support (2295)

Line Number	Line Name		FY2020 Actuals	FY2021 Management Plan	FY2022 Governor
2000	Travel		13.7	36.7	36.7
Object Class	Servicing Agency	Explanation	FY2020 Actuals	FY2021 Management Plan	FY2022 Governor
2000 Travel Detail Totals			13.7	36.7	36.7
2000	In-State Employee Travel	Travel and per diem for field travel including project review, survey, project analysis, administrative and procedural review of projects within the state, and attending training and conferences. In state administrative travel for the regional director, section and group chiefs, and administrative staff.	6.7	32.7	32.7
2002	Out of State Employee Travel	Out of state travel and per diem for regional director or other employees. Travel is usually for administrative, conventions, meeting, and training not available in-state.	7.0	4.0	4.0

Line Item Detail (1676)
Department of Transportation/Public Facilities
Services

Component: Northern Region Construction and CIP Support (2295)

Line Number	Line Name		FY2020 Actuals	FY2021 Management Plan	FY2022 Governor
3000	Services		479.9	253.1	524.9
Object Class	Servicing Agency	Explanation	FY2020 Actuals	FY2021 Management Plan	FY2022 Governor
3000 Services Detail Totals			479.9	253.1	524.9
3000	Education Services	Training and conference fees for staff, excluding IT-related. Includes Western Alliance for Quality in Transportation Construction (WAQTC) training, Nuclear Regulatory Commission (NRC) training, American Association of State and Highway Transportation Officials (AASHTO) training, and Highway Users Federation conferences.	7.9	10.0	3.0
3001	Financial Services	Financial transaction fees.	2.7	0.0	0.0
3003	Information Technology	All information technology (IT) contractual costs such as software licensing, software maintenance, IT training, IT consulting, and IT equipment leases.	1.8	22.5	17.2
3004	Telecommunications	Long distance, local phone service, data communications, cellular service provided by vendors.	16.6	45.0	30.0
3005	Health Services	Medical services.	0.4	5.0	0.0
3006	Delivery Services	Courier contract.	11.0	0.0	0.0
3007	Advertising and Promotions	Advertising and legal and public notices for non-project specific and public relations activities.	5.3	9.5	1.5
3008	Utilities	Utilities include waste disposal, propane and heating oil for field labs \$2.0 and McKinley building \$33.9.	41.5	2.0	2.0

Line Item Detail (1676)
Department of Transportation/Public Facilities
Services

Component: Northern Region Construction and CIP Support (2295)

Object Class	Servicing Agency	Explanation	FY2020 Actuals	FY2021 Management Plan	FY2022 Governor
3000 Services Detail Totals			479.9	253.1	524.9
3009	Structure/Infrastructure/Land	Inspections/Testing services.	33.1	0.0	0.0
3010	Equipment/Machinery	Maintenance agreements for copiers, and office equipment repairs as needed.	8.9	11.1	11.1
3010	Equipment/Machinery	Rental or lease of postage meter (\$2.0), Xerox copier (\$1.0), and occasional rental of other equipment as needed.	84.5	8.4	8.4
3011	Other Services	Print/Copy/Graphics services.	32.2	0.0	0.0
3017	Inter-Agency Information Technology Non-Telecommunications	Admin - Department-wide Computer services provided by Department of Administration such as central server, data storage, printing, network services, open connect, and task order system.	112.4	72.1	302.9
3018	Inter-Agency Information Technology Telecommunications	Admin - Department-wide Telecommunications services provided by the Department of Administration such as basic telephone services, equipment and features, dedicated voice/data line service, statewide paging, two-way radio, and video conferencing.	37.8	34.0	34.0
3021	Inter-Agency Mail	Admin - Department-wide Chargeback fees for central mail services such as mailing vendor payments and payroll warrants.	0.7	1.0	1.0
3022	Inter-Agency Human Resources	Admin - Department-wide Chargeback fees for human resource services such as labor relations, position classification and payroll processing.	0.0	4.5	85.8
3024	Inter-Agency Legal	Law - Department-wide Legal services provided by the Department of Law.	0.6	5.0	5.0
3026	Inter-Agency Insurance	Admin - Department-wide Risk Management Services for the McKinley Building (leased).	0.0	1.4	1.4
3027	Inter-Agency Financial	Admin - Department-wide Chargeback fees for	54.3	10.5	10.5

Line Item Detail (1676)
Department of Transportation/Public Facilities
Services

Component: Northern Region Construction and CIP Support (2295)

Object Class		Servicing Agency	Explanation	FY2020 Actuals	FY2021 Management Plan	FY2022 Governor
			3000 Services Detail Totals	479.9	253.1	524.9
			HRM/IRIS/ALDER.			
3028	Inter-Agency Americans with Disabilities Act Compliance	Admin - Department-wide	Chargeback fees for the statewide coordinator for the Americans with Disabilities Act (ADA).	0.6	1.1	1.1
3037	State Equipment Fleet	Trans - State Equipment Fleet (2791)	State Equipment and Fleet operating and replacement fees for approximately 76 vehicles, to include credit card fuel, and vehicle maintenance and repairs. Budgeted amounts, if any, are for operating budget vehicles only; prior year actuals amount includes the cost of capital improvement project vehicles, which are funded through an unbudgeted reimbursable services agreement.	24.9	10.0	10.0
3038	Inter-Agency Management/Consulting	Gov - Department-wide	Office of Management and Budget - Budget Analyst support.	1.0	0.0	0.0
3039	DOT/PF Time & Equipment System		Vehicle usage billed to the operating budget based on established rates and actual usage of vehicles.	1.7	0.0	0.0

Line Item Detail (1676)
Department of Transportation/Public Facilities
Commodities

Component: Northern Region Construction and CIP Support (2295)

Line Number	Line Name		FY2020 Actuals	FY2021 Management Plan	FY2022 Governor
4000	Commodities		325.2	133.2	133.2
Object Class	Servicing Agency	Explanation	FY2020 Actuals	FY2021 Management Plan	FY2022 Governor
4000 Commodities Detail Totals			325.2	133.2	133.2
4000	Business	Office and instructional supplies. Includes consumable supplies such as paper, pens, copy machine supplies, photographic supplies, computer and word processing supplies, and subscriptions. Also includes non-consumable supplies such as furniture and office equipment.	59.7	49.7	49.7
4000	Business	Computers, monitors, printers.	157.8	31.5	31.5
4000	Business	Equipment/Furniture/Tools/Vehicles	6.8	10.0	10.0
4002	Household/Institutional	Minor cleaning supplies for office equipment and conference rooms.	3.7	2.0	2.0
4003	Scientific and Medical	Laboratory supplies for construction engineering and quality control.	8.9	20.0	20.0
4004	Safety	Safety, first aid, personal safety protection, and fire suppression.	9.2	10.0	10.0
4015	Parts and Supplies	Parts and supplies.	34.7	0.0	0.0
4016	Paint/Preservatives	Paint and preservatives.	0.3	0.0	0.0
4019	Small Tools/Minor Equipment	Signs/markers, minor tools/equipment, maintenance and repair supplies. Includes paint, lumber and other structural supplies for minor business or field office repair and maintenance. Also includes lube and parts for minor equipment repairs.	44.1	10.0	10.0

Line Item Detail (1676)
Department of Transportation/Public Facilities
Capital Outlay

Component: Northern Region Construction and CIP Support (2295)

Line Number	Line Name		FY2020 Actuals	FY2021 Management Plan	FY2022 Governor
5000	Capital Outlay		75.2	0.0	0.0
Object Class	Servicing Agency	Explanation	FY2020 Actuals	FY2021 Management Plan	FY2022 Governor
5000 Capital Outlay Detail Totals			75.2	0.0	0.0
5004	Equipment	GPS receivers	75.2	0.0	0.0

Revenue Detail (1681)
Department of Transportation/Public Facilities

Component: Northern Region Construction and CIP Support (2295)

Revenue Type (OMB Fund Code) Revenue Source	Component	Comment	FY2020 Actuals	FY2021 Management Plan	FY2022 Governor
5007 I/A Rcpts (1007 I/A Rcpts)			6.2	0.0	0.0
5301 Inter-Agency Receipts	Trans - Northern Highways & Aviation (2068)	Winter snow removal support to Northern Region Highways & Aviation	6.2	0.0	0.0
5061 CIP Rcpts (1061 CIP Rcpts)			20,544.3	17,831.1	18,200.7
5351 Capital Improvement Project Inter-Agency		Capital improvement project receipts for work in direct support of capital projects.	17,682.0	15,162.5	15,249.0
5351 Capital Improvement Project Inter-Agency		Recovery of indirect costs from the capital budget via the department's Indirect Cost Allocation Plan (ICAP).	2,862.3	2,668.6	2,951.7
6004 Gen Fund (1004 Gen Fund)			3.5	0.0	0.0
6046 General Fund - Prior Year Reimbursement Recovery		Prior year reimbursement recovery.	3.5	0.0	0.0

Inter-Agency Services (1682)
Department of Transportation/Public Facilities

Component: Northern Region Construction and CIP Support (2295)

				FY2020 Actuals	FY2021 Management Plan	FY2022 Governor
Component Totals				232.3	139.6	451.7
With Department of Administration				205.8	124.6	436.7
With Department of Law				0.6	5.0	5.0
With Department of Transportation/Public Facilities				24.9	10.0	10.0
With Office of the Governor				1.0	0.0	0.0
Object Class	Inter-Agency	Servicing Agency	Explanation	FY2020 Actuals	FY2021 Management Plan	FY2022 Governor
3017	Inter-Agency Information Technology Non-Telecommunications	Admin - Department-wide	Computer services provided by Department of Administration such as central server, data storage, printing, network services, open connect, and task order system.	112.4	72.1	302.9
3018	Inter-Agency Information Technology Telecommunications	Admin - Department-wide	Telecommunications services provided by the Department of Administration such as basic telephone services, equipment and features, dedicated voice/data line service, statewide paging, two-way radio, and video conferencing.	37.8	34.0	34.0
3021	Inter-Agency Mail	Admin - Department-wide	Chargeback fees for central mail services such as mailing vendor payments and payroll warrants.	0.7	1.0	1.0
3022	Inter-Agency Human Resources	Admin - Department-wide	Chargeback fees for human resource services such as labor relations, position classification and payroll processing.	0.0	4.5	85.8
3024	Inter-Agency Legal	Law - Department-wide	Legal services provided by the Department of Law.	0.6	5.0	5.0
3026	Inter-Agency Insurance	Admin - Department-wide	Risk Management Services for the McKinley Building (leased).	0.0	1.4	1.4
3027	Inter-Agency Financial	Admin - Department-wide	Chargeback fees for HRM/IRIS/ALDER.	54.3	10.5	10.5
3028	Inter-Agency Americans with	Admin - Department-wide	Chargeback fees for the statewide	0.6	1.1	1.1

Inter-Agency Services (1682)
Department of Transportation/Public Facilities

Component: Northern Region Construction and CIP Support (2295)

Object Class	Servicing Agency	Explanation	FY2020 Actuals	FY2021 Management Plan	FY2022 Governor
		Disabilities Act Compliance			
3037	State Equipment Fleet	Trans - State Equipment Fleet (2791)	24.9	10.0	10.0
		coordinator for the Americans with Disabilities Act (ADA). State Equipment and Fleet operating and replacement fees for approximately 76 vehicles, to include credit card fuel, and vehicle maintenance and repairs. Budgeted amounts, if any, are for operating budget vehicles only; prior year actuals amount includes the cost of capital improvement project vehicles, which are funded through an unbudgeted reimbursable services agreement.			
3038	Inter-Agency Management/Consulting	Gov - Department-wide	1.0	0.0	0.0
		Office of Management and Budget - Budget Analyst support.			

Personal Services Expenditure Detail
Department of Transportation/Public Facilities

Scenario: FY2022 Governor (17280)
Component: Northern Region Construction and CIP Support (2295)
RDU: Design, Engineering and Construction (526)

PCN	Job Class Title	Time Status	Retire Code	Barg Unit	Location	Salary Sched	Range / Step	Comp Months	Split / Count	Annual Salaries	COLA	Premium Pay	Annual Benefits	Total Costs	UGF Amount
25-1239	Assistant Commissioner	FT	A	XE	Fairbanks	N03	27N	6.0	*	74,324	0	0	36,873	111,197	95,351
25-1366	Engineer/Architect IV	FT	A	SS	Fairbanks	203	26P	12.0		165,301	0	0	78,678	243,979	0
25-1367	Administrative Officer I	FT	A	SS	Fairbanks	203	17B / C	12.0		63,557	0	0	42,372	105,929	1,713
25-1368	Engineer/Architect IV	FT	A	SS	Fairbanks	203	26P	12.0		166,095	0	0	78,924	245,019	0
25-1371	Engineer/Architect III	FT	A	SS	Fairbanks	203	25K	12.0		133,349	0	0	68,223	201,572	0
25-1384	Engineer/Architect III	FT	A	SS	Fairbanks	203	25L / M	12.0		139,668	0	0	70,563	210,231	0
25-1385	Accounting Technician III	FT	A	GP	Fairbanks	203	16G	12.0		65,793	971	5,061	45,035	116,860	0
25-1387	Engineering Associate	FT	A	GP	Fairbanks	203	21O / P	12.0		110,117	1,740	16,885	65,832	194,574	0
25-1403	Accounting Technician III	FT	A	GG	Fairbanks	203	16A / B	12.0		54,659	777	2,051	39,796	97,283	0
25-1405	Engineering Associate	FT	A	GP	Fairbanks	203	21G	12.0		91,962	1,454	14,148	58,093	165,657	0
25-1407	Engineer/Architect III	FT	A	SS	Fairbanks	203	25F	12.0		125,091	0	0	65,164	190,255	0
25-1410	Accountant III	FT	A	GG	Fairbanks	203	18N / O	12.0		90,721	1,243	0	52,393	144,357	0
25-1411	Engineer/Architect III	FT	A	SS	Fairbanks	203	25L	12.0		137,654	0	0	69,817	207,471	0
25-1412	Engineering Assistant III	FT	A	GP	Fairbanks	203	21C / D	12.0		81,944	1,292	12,363	53,722	149,321	0
25-1434	Engineer/Architect I	FT	A	GP	Fairbanks	203	22J / K	12.0		104,454	1,431	0	57,480	163,365	0
25-1436	Engineering Assistant III	FT	A	GP	Fairbanks	203	21G	12.0		91,962	1,454	14,148	58,093	165,657	0
25-1443	Engineering Assistant II	FT	A	GP	Fairbanks	203	19G / J	12.0		81,054	1,280	12,363	53,392	148,089	0
25-1447	Engineering Assistant III	FT	A	GP	Fairbanks	203	21L	12.0		102,161	1,615	15,717	62,452	181,945	0
25-1449	Engineering Assistant II	FT	A	GG	Fairbanks	203	19Q / R	12.0		104,797	1,654	15,877	63,488	185,816	0
25-1451	Administrative Assistant II	FT	A	GP	Fairbanks	203	14B / C	12.0		48,095	710	3,694	37,973	90,472	0
25-1455	Engineering Assistant III	FT	A	GP	Fairbanks	203	21G / J	12.0		93,088	1,470	14,148	58,511	167,217	0
25-1457	Engineering Assistant II	FT	A	GP	Fairbanks	203	19G	12.0		80,360	1,271	12,363	53,135	147,129	0
25-1459	Engineering Assistant II	FT	A	GP	Fairbanks	203	19F / G	12.0		78,161	1,235	11,994	52,184	143,574	0
25-1461	Administrative Assistant I	FT	A	GP	Fairbanks	203	12K / L	12.0		54,574	804	4,110	40,527	100,015	0
25-1464	Eng Tech Jrny	PT	A	LL	Fairbanks	2EE	54F	8.0		39,110	0	4,231	28,511	71,852	0
25-1465	Eng Tech Jrny	PT	A	LL	Fairbanks	2EE	54J	8.0		40,483	0	8,760	30,697	79,940	0
25-1467	Eng Tech Jrny	PT	A	LL	Nome	2II	54F	8.0		41,731	0	13,545	32,932	88,208	0
25-1468	Eng Tech Jrny	PT	A	LL	Fairbanks	2EE	54E / F	8.0		37,938	0	8,196	29,546	75,680	0
25-1469	Eng Tech Jrny	PT	A	LL	Fairbanks	2EE	54F	8.0		39,110	0	8,463	30,079	77,652	0
25-1473	Engineering Assistant III	FT	A	GP	Fairbanks	203	21D / E	12.0		85,898	1,336	11,563	54,890	153,687	0
25-1474	Eng Tech Jrny	PT	A	LL	Fairbanks	2EE	54P	8.0		49,827	0	5,391	32,910	88,128	0
25-1479	Eng Tech Jrny	PT	A	LL	Fairbanks	2EE	54F	8.0		39,110	0	8,463	30,079	77,652	0
25-1480	E/T Subjrny III	PT	A	LL	Fairbanks	2EE	55A / B	8.0		32,213	0	6,861	26,931	66,005	0
25-1482	E/T Subjrny III	PT	A	LL	Nome	2II	55A / B	6.0		25,998	0	11,142	23,100	60,240	0
25-1484	E/T Subjrny III	PT	A	LL	Fairbanks	2EE	55E	8.0		35,991	0	7,203	28,457	71,651	0
25-1485	E/T Subjrny III	PT	A	LL	Fairbanks	2EE	55E / F	8.0		36,937	0	7,788	29,024	73,749	0
25-1486	E/T Subjrny III	PT	A	LL	Fairbanks	2EE	55A / B	8.0		32,213	0	6,861	26,931	66,005	0
25-1487	E/T Subjrny II	PT	A	LL	Nome	2II	57A / B	6.0		23,468	0	6,705	20,519	50,692	0

Note: If a position is split, an asterisk (*) will appear in the Split/Count column. If the split position is also counted in the component, two asterisks (**) will appear in this column. [No valid job title] appearing in the Job Class Title indicates that the PCN has an invalid class code or invalid range for the class code effective date of this scenario.

Personal Services Expenditure Detail
Department of Transportation/Public Facilities

Scenario: FY2022 Governor (17280)
Component: Northern Region Construction and CIP Support (2295)
RDU: Design, Engineering and Construction (526)

PCN	Job Class Title	Time Status	Retire Code	Barg Unit	Location	Salary Sched	Range / Step	Comp Months	Split / Count	Annual Salaries	COLA	Premium Pay	Annual Benefits	Total Costs	UGF Amount
25-1490	Eng Tech Jrny	PT	A	LL	Fairbanks	2EE	54F	9.5		46,444	0	4,231	33,563	84,238	0
25-1492	E/T Subjrny III	PT	A	LL	Fairbanks	2EE	55J	8.0		38,445	0	8,319	29,779	76,543	0
25-1494	Maint Gen Jrny	FT	A	LL	Fairbanks	2EE	54F	12.0		58,666	0	10,578	44,334	113,578	0
25-1502	E/T Subjrny II	PT	A	LL	Fairbanks	2EE	57B	6.0		22,085	0	3,186	18,704	43,975	0
25-1506	E/T Subjrny II	PT	A	LL	Nome	2II	57B	6.0		23,926	0	6,903	20,762	51,591	0
25-1507	E/T Subjrny II	PT	A	LL	Fairbanks	2EE	57A / B	6.0		21,628	0	6,174	19,641	47,443	0
25-1508	E/T Subjrny II	PT	A	LL	Fairbanks	2EE	57C / D	6.0		23,399	0	6,576	20,446	50,421	0
25-1511	E/T Subjrny II	PT	A	LL	Fairbanks	2EE	57D	6.0		23,520	0	6,786	20,568	50,874	0
25-1518	E/T Subjrny II	PT	A	LL	Fairbanks	2EE	57B	6.0		22,085	0	6,372	19,884	48,341	0
25-1519	E/T Subjrny II	PT	A	LL	Fairbanks	2EE	57A / B	6.0		21,628	0	6,174	19,641	47,443	0
25-1524	Eng Tech Jrny	PT	A	LL	Fairbanks	2EE	54K / L	8.0		42,815	0	9,066	31,674	83,555	0
25-1525	E/T Subjrny II	PT	A	LL	Fairbanks	2EE	57B	6.0		22,085	0	6,372	19,884	48,341	0
25-1534	Engineering Assistant III	FT	A	GP	Fairbanks	203	21J / K	12.0		96,967	1,480	11,056	58,802	168,305	0
25-1541	Engineering Assistant II	FT	A	GP	Fairbanks	203	19D / E	12.0		73,601	1,124	8,415	49,169	132,309	0
25-1548	Engineering Assistant II	FT	A	GP	Fairbanks	203	19C / D	12.0		71,732	1,113	9,465	48,866	131,176	0
25-1555	Engineering Assistant II	FT	A	GP	Fairbanks	203	19F	12.0		77,961	1,233	11,994	52,110	143,298	0
25-1557	Engineering Assistant II	FT	A	GP	Fairbanks	203	19C / D	12.0		71,841	1,114	9,465	48,906	131,326	0
25-1566	E/T Subjrny II	PT	A	LL	Fairbanks	2EE	57B	6.0		22,085	0	6,372	19,884	48,341	0
25-1569	E/T Subjrny II	PT	A	LL	Fairbanks	2EE	57C	6.0		22,792	0	6,576	20,221	49,589	0
25-1573	Engineering Associate	FT	A	GP	Fairbanks	203	21A / B	12.0		77,051	1,215	11,574	51,617	141,457	0
25-1576	Engineering Assistant III	FT	A	GP	Nome	237	21J / K	12.0		131,606	1,988	20,247	74,482	228,323	0
25-1578	Engineering Assistant III	FT	A	GP	Fairbanks	203	21F / G	12.0		89,525	1,227	0	51,950	142,702	0
25-1579	Engineering Assistant II	FT	A	GP	Fairbanks	203	19E / F	12.0		75,686	1,156	8,680	50,039	135,561	0
25-1580	Engineering Assistant II	FT	A	GP	Fairbanks	203	19J / K	12.0		85,953	1,354	12,876	55,397	155,580	0
25-1582	Engineering Assistant II	FT	A	GP	Fairbanks	203	19C / D	12.0		70,644	1,098	9,465	48,463	129,670	0
25-1596	E/T Subjrny II	PT	A	LL	Fairbanks	2EE	57B / C	6.0		22,380	0	6,372	19,993	48,745	0
25-1603	Engineer/Architect III	FT	A	SS	Fairbanks	203	25N	12.0		148,206	0	0	73,394	221,600	0
25-1609	Engineering Associate	FT	A	GP	Fairbanks	203	21G / J	12.0		92,927	1,467	14,148	58,451	166,993	0
25-1615	E/T Subjrny III	PT	A	LL	Fairbanks	2EE	55F	8.0		37,156	0	6,030	28,454	71,640	0
25-1625	Engineering Assistant I	FT	A	GP	Fairbanks	203	17B / C	12.0		59,531	894	5,698	42,951	109,074	0
25-1627	Engineering Assistant II	FT	A	GP	Nome	237	19E / F	12.0		103,399	1,575	11,547	61,366	177,887	0
25-1632	Engineering Assistant III	FT	A	GP	Fairbanks	203	21E / F	12.0		87,729	1,270	4,955	53,120	147,074	0
25-1634	Engineer/Architect V	FT	A	SS	Fairbanks	203	27M	12.0		152,838	0	0	74,826	227,664	0
25-1637	Engineering Assistant II	FT	A	GP	Fairbanks	203	19G	12.0		80,360	1,186	6,181	50,845	138,572	0
25-1638	Administrative Assistant I	FT	A	GP	Fairbanks	203	12C / D	12.0		44,345	654	3,346	36,455	84,800	0
25-1639	Engineering Assistant III	FT	A	GP	Fairbanks	203	21L / M	12.0		105,337	1,605	11,787	62,173	180,902	0
25-1656	Engineering Assistant III	FT	A	GP	Fairbanks	203	21C / D	12.0		81,944	1,229	7,726	52,004	142,903	0
25-1657	Engineering Assistant III	FT	A	GP	Fairbanks	203	21G / J	12.0		93,088	1,373	7,074	55,890	157,425	0

Note: If a position is split, an asterisk (*) will appear in the Split/Count column. If the split position is also counted in the component, two asterisks (**) will appear in this column. [No valid job title] appearing in the Job Class Title indicates that the PCN has an invalid class code or invalid range for the class code effective date of this scenario.

Personal Services Expenditure Detail
Department of Transportation/Public Facilities

Scenario: FY2022 Governor (17280)
Component: Northern Region Construction and CIP Support (2295)
RDU: Design, Engineering and Construction (526)

PCN	Job Class Title	Time Status	Retire Code	Barg Unit	Location	Salary Sched	Range / Step	Comp Months	Split / Count	Annual Salaries	COLA	Premium Pay	Annual Benefits	Total Costs	UGF Amount
25-1658	Engineering Assistant III	FT	A	GP	Fairbanks	203	21F / G	12.0		91,962	1,406	10,611	56,783	160,762	0
25-1659	Engineering Assistant II	FT	A	GP	Fairbanks	203	19C / D	12.0		71,950	1,116	9,465	48,946	131,477	0
25-1660	Engineering Assistant II	FT	A	GP	Fairbanks	203	19A / B	12.0		67,314	1,027	7,591	46,535	122,467	0
25-1661	Engineering Assistant II	FT	A	GP	Fairbanks	203	19C / D	12.0		70,861	1,082	8,113	48,042	128,098	0
25-1667	Eng Tech Jrny	PT	A	LL	Fairbanks	2EE	54E	9.5		44,978	0	8,196	34,489	87,663	0
25-1668	Eng Tech Jrny	PT	A	LL	Nome	2II	54E / F	9.5		49,401	0	13,144	37,960	100,505	0
25-1674	Accounting Technician I	FT	A	GP	Fairbanks	203	12C / D	12.0		43,617	598	0	34,946	79,161	0
25-1678	E/T Subjrny III	PT	A	LL	Fairbanks	2EE	55L	8.0		41,190	0	8,913	31,016	81,119	0
25-1684	E/T Subjrny II	PT	A	LL	Fairbanks	2EE	57F	6.0		25,059	0	7,230	21,303	53,592	0
25-1688	E/T Subjrny II	PT	A	LL	Fairbanks	2EE	57B	6.0		22,085	0	6,372	19,884	48,341	0
25-1689	E/T Subjrny II	PT	A	LL	Fairbanks	2EE	57A / B	7.0		25,309	0	4,630	21,990	51,929	0
25-1693	E/T Subjrny II	PT	A	LL	Fairbanks	2EE	57B	7.0		25,766	0	4,779	22,214	52,759	0
25-1700	E/T Subjrny II	PT	A	LL	Fairbanks	2EE	57B / C	7.0		26,591	0	6,576	23,185	56,352	0
25-1701	E/T Subjrny II	PT	A	LL	Fairbanks	2EE	57C	7.0		26,591	0	4,932	22,576	54,099	0
25-1705	Engineering Associate	FT	A	GP	Fairbanks	203	21K	12.0		98,943	1,565	15,222	61,077	176,807	0
25-1710	E/T Subjrny II	PT	A	LL	Fairbanks	2EE	57A / B	7.0		25,309	0	6,174	22,562	54,045	0
25-1715	Eng Tech Jrny	PT	A	LL	Nome	2II	54E	8.0		40,497	0	13,144	32,326	85,967	0
25-1742	Engineering Assistant III	FT	A	GP	Fairbanks	203	21J	12.0		95,823	1,465	11,056	58,378	166,722	0
25-1745	E/T Subjrny II	PT	A	LL	Fairbanks	2EE	57C	7.0		26,591	0	6,576	23,185	56,352	0
25-1748	Eng Tech Jrny	PT	A	LL	Fairbanks	2EE	54A / B	8.0		33,884	0	7,215	27,681	68,780	0
25-1752	Accountant IV	FT	A	SS	Fairbanks	203	20R	12.0		122,778	0	0	64,307	187,085	0
25-1758	Eng Tech Jrny	PT	A	LL	Fairbanks	2EE	54A / B	8.0		33,884	0	7,215	27,681	68,780	0
25-1761	Engineering Assistant II	FT	A	GP	Fairbanks	203	19B / C	12.0		68,448	1,046	7,854	47,053	124,401	0
25-1762	E/T Subjrny III	PT	A	LL	Fairbanks	2EE	55C / D	8.0		33,978	0	6,394	27,411	67,783	0
25-1765	Engineering Assistant III	FT	A	GP	Fairbanks	203	21O	12.0		109,141	1,726	16,803	65,440	193,110	0
25-1767	Office Assistant II	FT	A	GP	Fairbanks	203	10B / C	12.0		37,640	516	0	32,732	70,888	0
25-1780	Engineering Assistant III	FT	A	GP	Nome	237	21K	12.0		131,606	1,922	15,185	72,917	221,630	0
25-1781	Engineering Assistant III	FT	A	GP	Fairbanks	203	21K	12.0		98,943	1,617	19,027	62,486	182,073	0
25-1782	Engineering Assistant III	FT	A	GP	Fairbanks	203	21C / D	12.0		80,847	1,235	9,272	52,170	143,524	0
25-1784	Engineering Assistant III	FT	A	GP	Fairbanks	203	21D / E	12.0		84,156	1,307	11,211	54,114	150,788	0
25-1785	Engineering Associate	FT	A	GP	Nome	237	21Q / R	12.0		157,230	2,375	24,175	83,616	267,396	0
25-1786	E/T Subjrny III	PT	A	LL	Nome	2II	55A / B	7.5		32,625	0	11,142	27,890	71,657	0
25-1787	E/T Subjrny II	PT	A	LL	Fairbanks	2EE	57B	7.5		27,607	0	6,372	24,265	58,244	0
25-1789	E/T Subjrny III	PT	A	LL	Nome	2II	55P	7.5		46,791	0	16,200	35,011	98,002	0
25-1790	E/T Subjrny II	PT	A	LL	Nome	2II	57B	6.0		23,926	0	6,903	20,762	51,591	0
25-1794	E/T Subjrny II	PT	A	LL	Nome	2II	57A / B	6.0		23,468	0	6,705	20,519	50,692	0
25-1795	Engineering Associate	FT	A	SS	Nome	237	21E / F	12.0		126,032	0	13,194	70,400	209,626	0
25-1796	Engineering Assistant III	FT	A	GP	Fairbanks	203	21M / N	12.0		105,905	1,674	16,227	64,028	187,834	0

Note: If a position is split, an asterisk (*) will appear in the Split/Count column. If the split position is also counted in the component, two asterisks (**) will appear in this column. [No valid job title] appearing in the Job Class Title indicates that the PCN has an invalid class code or invalid range for the class code effective date of this scenario.

Personal Services Expenditure Detail
Department of Transportation/Public Facilities

Scenario: FY2022 Governor (17280)
Component: Northern Region Construction and CIP Support (2295)
RDU: Design, Engineering and Construction (526)

PCN	Job Class Title	Time Status	Retire Code	Barg Unit	Location	Salary Sched	Range / Step	Comp Months	Split / Count	Annual Salaries	COLA	Premium Pay	Annual Benefits	Total Costs	UGF Amount
25-1797	Engineering Associate	FT	A	GP	Fairbanks	203	21J / K	12.0		96,343	1,522	14,742	59,936	172,543	0
25-1803	E/T Subjrnly III	PT	A	LL	Nome	2II	55D	7.5		35,145	0	12,168	29,204	76,517	0
25-1806	Office Assistant III	FT	A	GG	Nome	237	11Q	12.0		81,220	1,284	12,504	53,506	148,514	0
25-1807	Engineering Associate	FT	A	GP	Nome	237	21O	12.0		145,161	2,120	16,762	77,594	241,637	0
25-1812	Engineering Assistant II	FT	A	GP	Fairbanks	203	19G	12.0		80,360	1,249	10,817	52,562	144,988	0
25-1816	Engineering Associate	FT	A	GP	Nome	237	21N	12.0		149,879	2,264	23,075	81,004	256,222	0
25-1819	E/T Subjrnly II	PT	A	LL	Nome	2II	57B / C	7.0		28,090	0	6,903	23,862	58,855	0
25-1820	Information Officer III	FT	A	GP	Fairbanks	203	20D / E	12.0		78,261	1,072	0	47,778	127,111	0
25-1822	Engineering Assistant II	FT	A	GP	Nome	237	19C / D	12.0		95,547	1,507	14,388	59,510	170,952	0
25-1823	Eng Tech Jrny	PT	A	LL	Nome	2II	54J / K	8.0		43,633	0	13,990	33,801	91,424	0
25-1825	Engineering Assistant III	FT	A	GP	Nome	237	21G / J	12.0		124,033	1,893	14,114	69,960	210,000	0
25-1827	Engineer/Architect III	FT	A	SS	Fairbanks	203	25L	12.0		137,654	0	0	69,817	207,471	0
25-1838	Engineer/Architect III	FT	A	SS	Fairbanks	203	25F	12.0		125,091	0	0	65,164	190,255	0
25-1843	Engineering Assistant II	FT	A	GP	Fairbanks	203	19B / C	12.0		68,355	1,062	9,163	47,503	126,083	0
25-1852	Eng Tech Jrny	PT	A	LL	Fairbanks	2EE	54F / J	9.5		47,988	0	8,759	35,812	92,559	0
25-1854	E/T Subjrnly III	PT	A	LL	Fairbanks	2EE	55B / C	8.0		33,509	0	7,080	27,492	68,081	0
25-1857	E/T Subjrnly III	PT	A	LL	Fairbanks	2EE	55D	8.0		34,868	0	7,545	28,167	70,580	0
25-1862	Eng Tech Jrny	PT	A	LL	Fairbanks	2EE	54F / J	9.5		46,701	0	8,463	35,226	90,390	0
25-1869	Accounting Technician III	FT	A	GP	Fairbanks	203	16N / O	12.0		80,293	1,162	4,495	50,196	136,146	0
25-1875	E/T Subjrnly III	PT	A	LL	Fairbanks	2EE	55D	8.0		34,868	0	7,545	28,167	70,580	0
25-1876	E/T Subjrnly III	PT	A	LL	Fairbanks	2EE	55J	8.0		38,445	0	8,319	29,779	76,543	0
25-1880	E/T Subjrnly II	PT	A	LL	Fairbanks	2EE	57A / B	7.0		25,309	0	6,174	22,562	54,045	0
25-3401	Engineering Associate	FT	A	GP	Fairbanks	203	21K / L	12.0		99,747	1,576	15,222	61,375	177,920	0
25-3402	Engineering Assistant III	FT	A	GP	Nome	237	21C / D	12.0		109,642	1,728	16,443	65,492	193,305	0
25-3405	Engineering Assistant II	FT	A	GP	Fairbanks	203	19G	12.0		80,360	1,271	12,363	53,135	147,129	0
25-3521	Engineering Assistant II	FT	A	GP	Fairbanks	203	19F	12.0		77,961	1,233	11,994	52,110	143,298	0
25-3525	Engineering Assistant II	FT	A	GG	Fairbanks	203	19K / L	12.0		86,756	1,371	13,293	55,848	157,268	0
25-3526	Engineering Assistant II	FT	A	GP	Fairbanks	203	19E / F	12.0		75,345	1,191	11,574	50,985	139,095	0
25-3527	Engineering Assistant II	FT	A	GP	Fairbanks	203	19G	12.0		80,360	1,271	12,363	53,135	147,129	0
25-3528	Engineering Assistant II	FT	A	GP	Fairbanks	203	19A / B	12.0		67,694	1,066	10,122	47,613	126,495	0
25-3730	Engineering Assistant III	FT	A	GP	Fairbanks	203	21K / L	12.0		101,088	1,594	15,222	61,872	179,776	0
25-3731	Engineering Assistant III	FT	A	GP	Fairbanks	203	21L	12.0		102,161	1,615	15,717	62,452	181,945	0
25-3732	Engineering Assistant III	FT	A	GP	Fairbanks	203	21G	12.0		91,962	1,454	14,148	58,093	165,657	0
25-3733	Engineering Assistant III	FT	A	GP	Nome	237	21G / J	12.0		123,392	1,898	18,819	71,465	215,574	0
25-IN1005	E/T Subjrnly I	NP	N	LL	Fairbanks	2EE	59A	6.0		19,257	0	11,112	3,866	34,235	0
25-IN1006	E/T Subjrnly I	NP	N	LL	Fairbanks	2EE	59A	6.0		19,257	0	11,112	3,866	34,235	0
25-IN1007	E/T Subjrnly I	NP	N	LL	Fairbanks	2EE	59A	6.0		19,257	0	11,112	3,866	34,235	0
25-IN1008	E/T Subjrnly I	NP	N	LL	Fairbanks	2EE	59A	6.0		19,257	0	11,112	3,866	34,235	0

Note: If a position is split, an asterisk (*) will appear in the Split/Count column. If the split position is also counted in the component, two asterisks (**) will appear in this column. [No valid job title] appearing in the Job Class Title indicates that the PCN has an invalid class code or invalid range for the class code effective date of this scenario.

Personal Services Expenditure Detail
Department of Transportation/Public Facilities

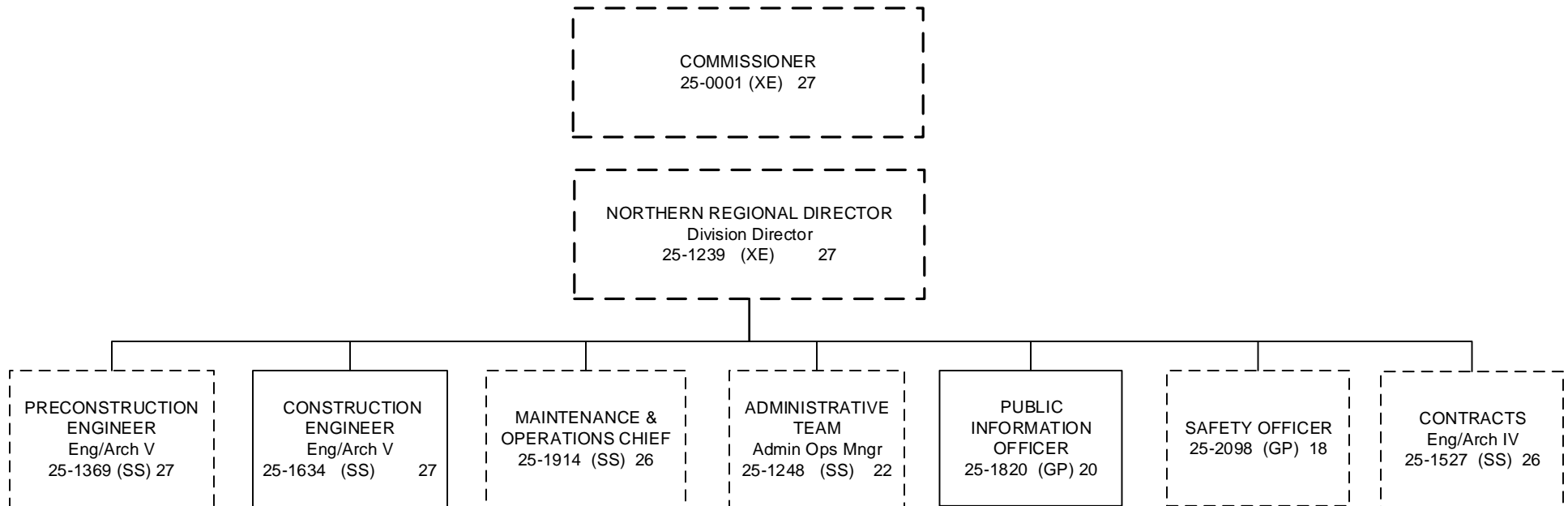
Scenario: FY2022 Governor (17280)
Component: Northern Region Construction and CIP Support (2295)
RDU: Design, Engineering and Construction (526)

PCN	Job Class Title	Time Status	Retire Code	Barg Unit	Location	Salary Sched	Range / Step	Comp Months	Split / Count	Annual Salaries	COLA	Premium Pay	Annual Benefits	Total Costs	UGF Amount
25-IN1014	E/T Subjrny I	NP	N	LL	Fairbanks	2EE	59A	6.0		19,257	0	11,112	3,866	34,235	0
													Total Salary Costs:	10,464,610	
													Total COLA:	101,172	
													Total Premium Pay:	1,345,544	
													Total Benefits:	6,675,421	
													Total Pre-Vacancy:	18,586,747	
													Minus Vacancy Adjustment of 4.95%:	(920,547)	
													Total Post-Vacancy:	17,666,200	
													Plus Lump Sum Premium Pay:	0	
													Personal Services Line 100:	17,666,200	
Total Component Months:		1,531.5													

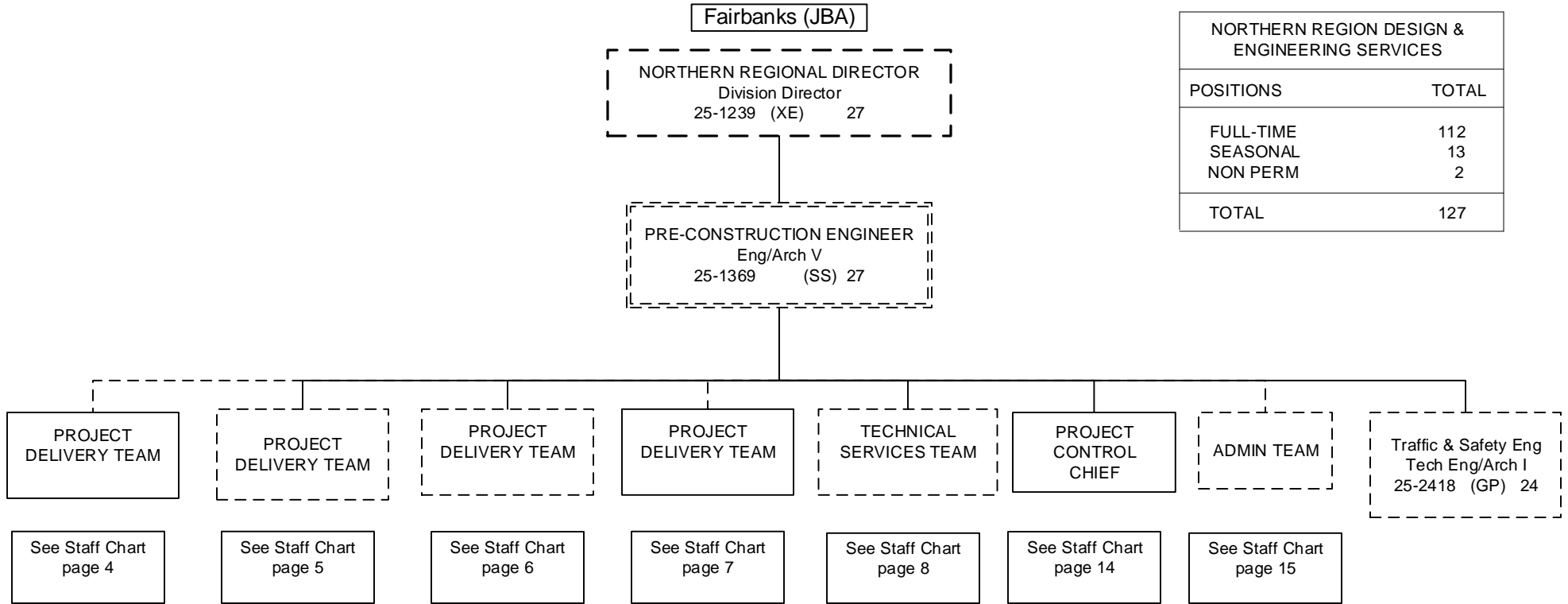
PCN Funding Sources:	Pre-Vacancy	Post-Vacancy	Percent
1004 General Fund Receipts	97,065	92,257	0.52%
1039 U/A Indirect Cost Recovery	2,446,135	2,324,985	13.16%
1061 Capital Improvement Project Receipts	16,043,547	15,248,958	86.32%
Total PCN Funding:	18,586,747	17,666,200	100.00%

Note: If a position is split, an asterisk (*) will appear in the Split/Count column. If the split position is also counted in the component, two asterisks (**) will appear in this column. [No valid job title] appearing in the Job Class Title indicates that the PCN has an invalid class code or invalid range for the class code effective date of this scenario.

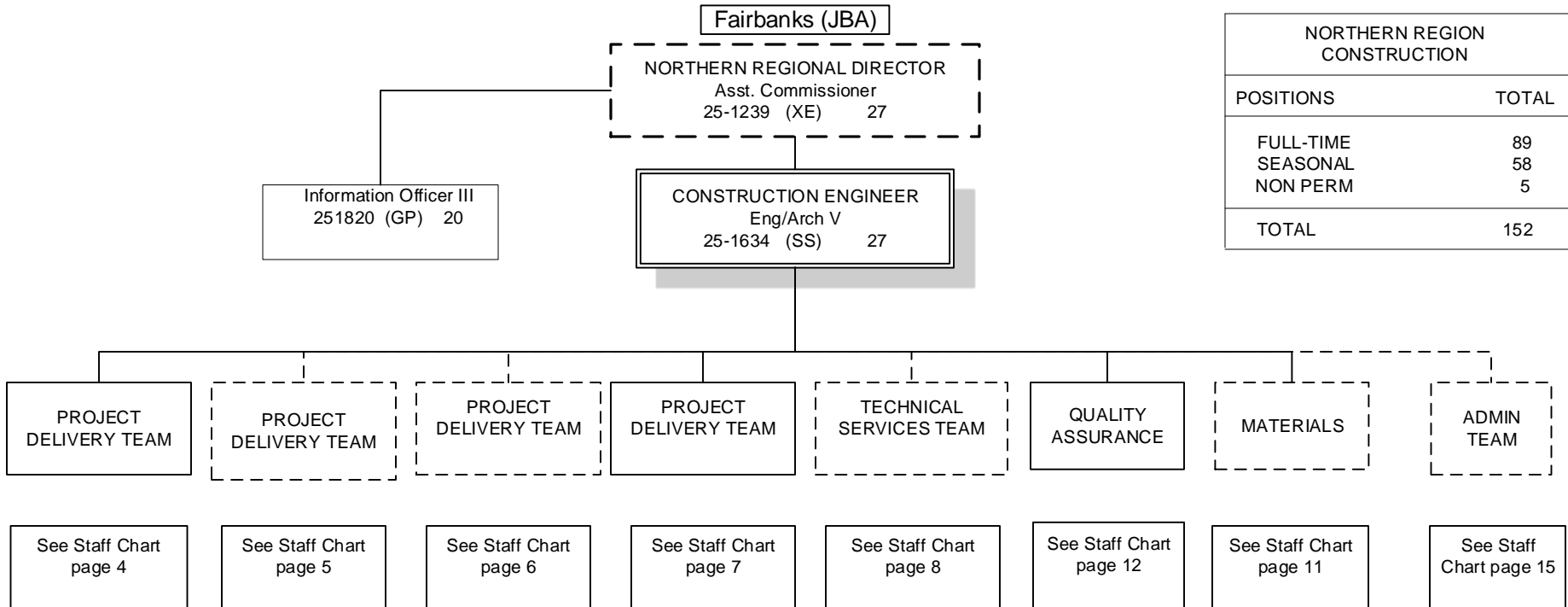
DEPARTMENT OF TRANSPORTATION AND PUBLIC FACILITIES
NORTHERN REGION CONSTRUCTION
FY22 GOVERNORS

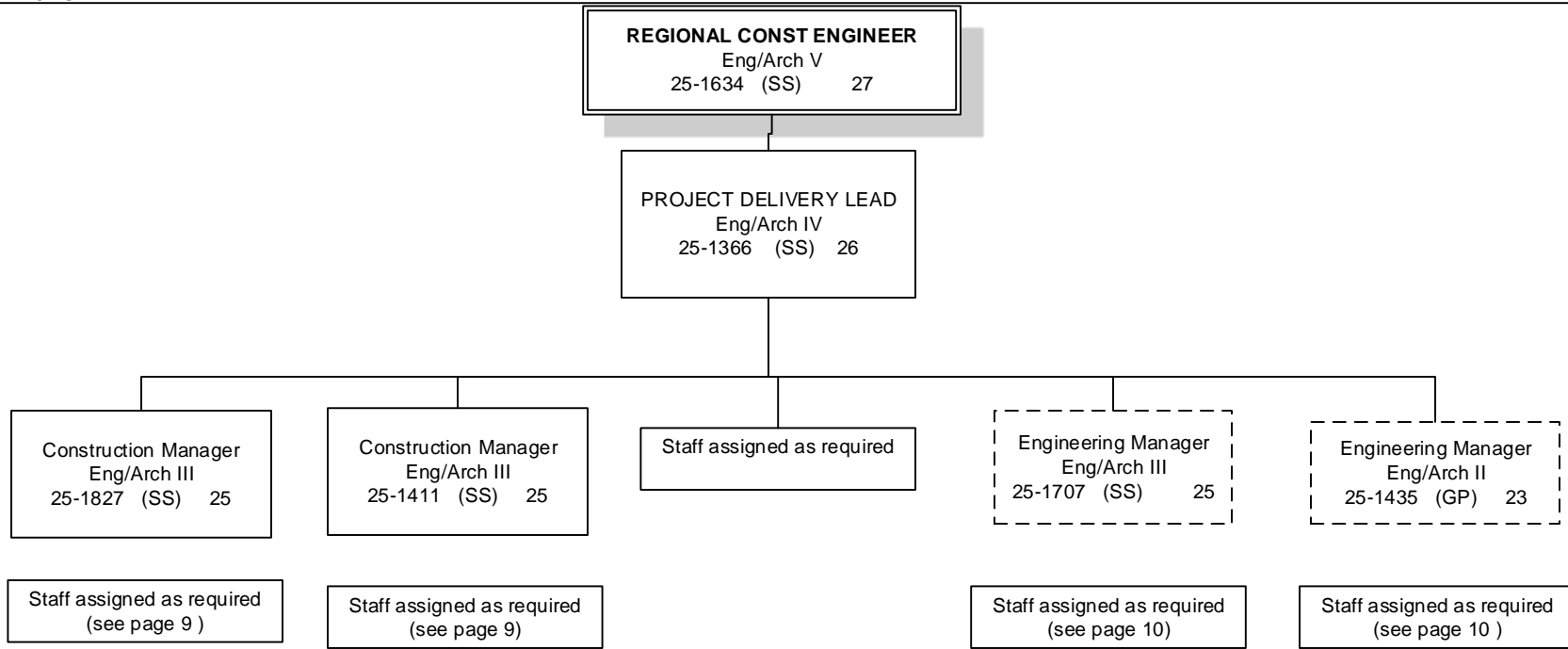


All positions located in Fairbanks unless otherwise noted



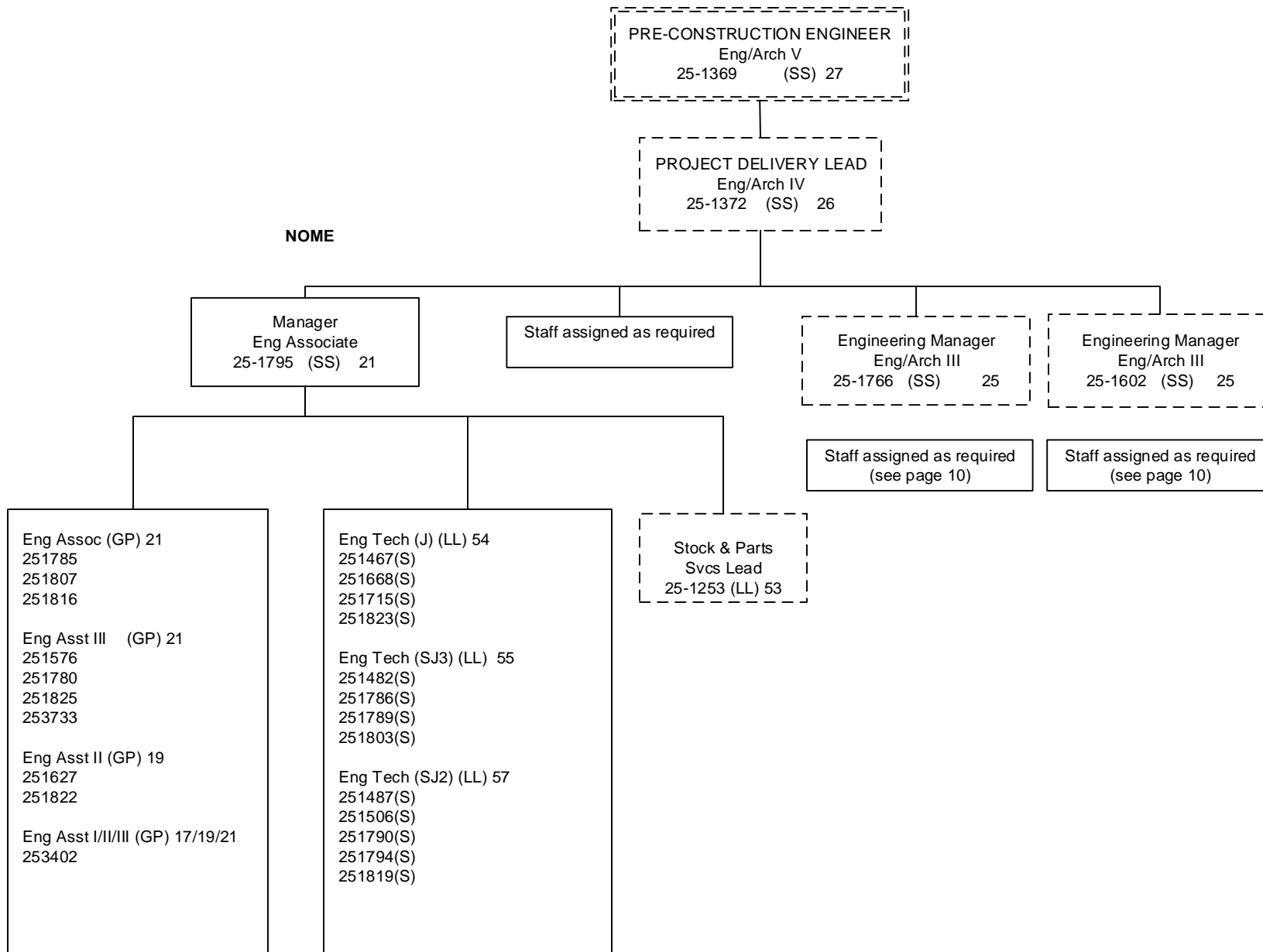
NORTHERN REGION DESIGN & ENGINEERING SERVICES	
POSITIONS	TOTAL
FULL-TIME	112
SEASONAL	13
NON PERM	2
TOTAL	127

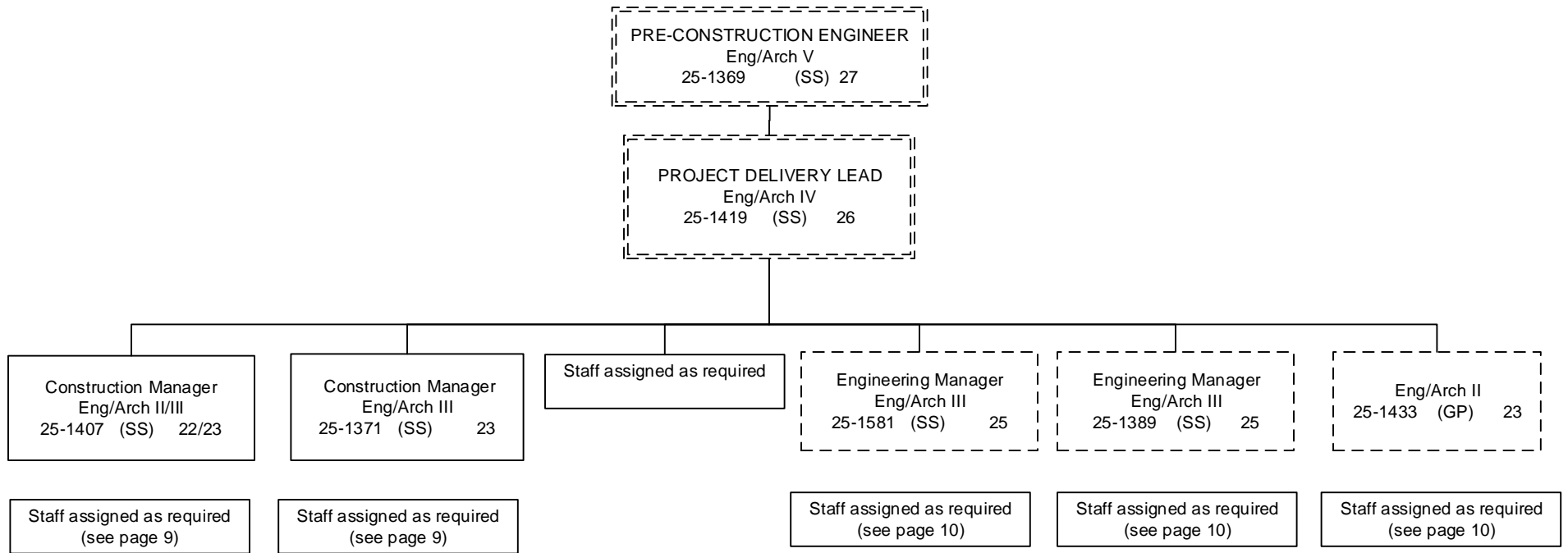


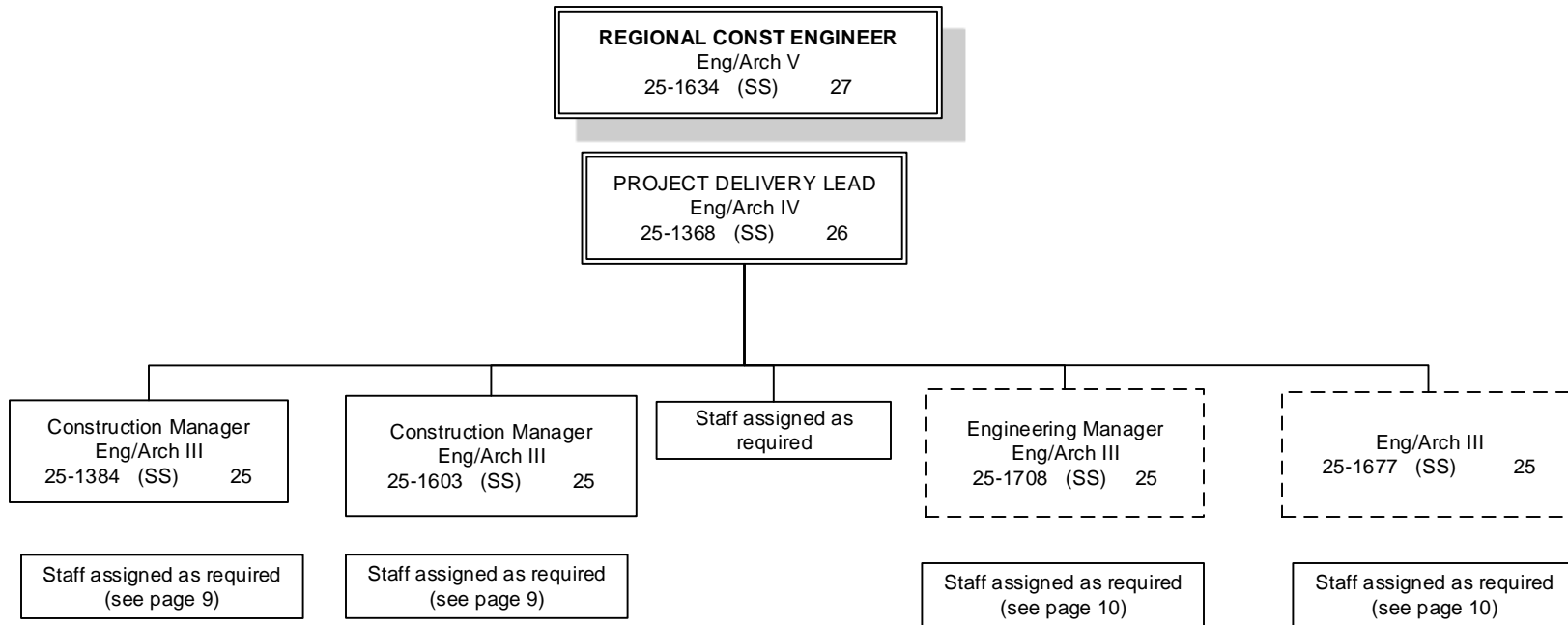


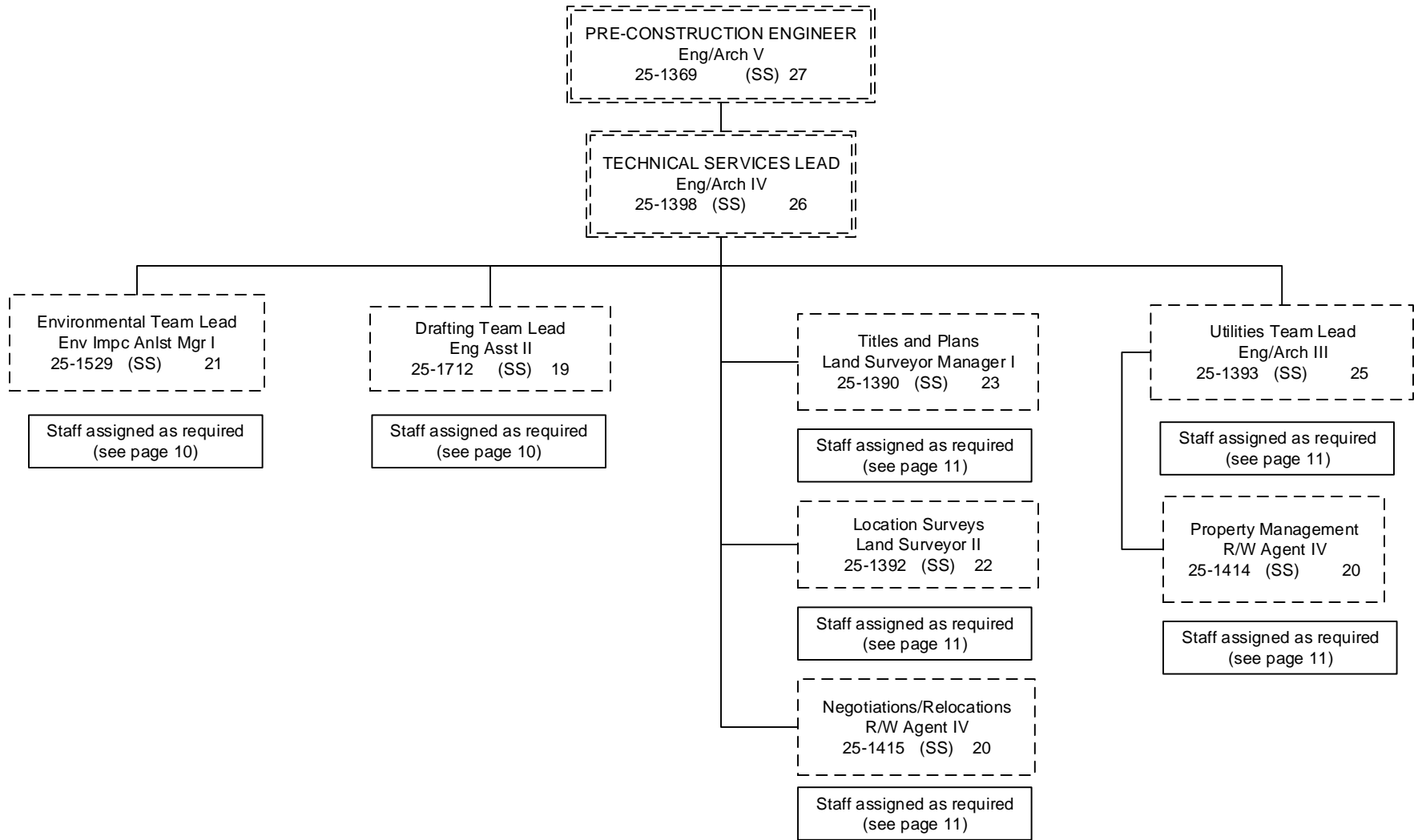
All positions located in Fairbanks unless otherwise noted

-- line positions not counted
here









CONSTRUCTION ENGINEERING STAFF ASSIGNED AS REQUIRED

Eng Associate (GP) 21
 251387
 251405
 251573
 251609
 251705
 251797
 253401

Eng Asst III (GP) 21
 251412
 251436
 251447
 251455
 251473
 251534
 251578
 251632
 251639
 251656
 251657
 251658
 251742
 251765
 251781
 251782
 251784
 251796
 253730
 253731
 253732

Eng Technician (J) (LL) 54
 251464(S)
 251465(S)
 251468(S)
 251469(S)
 251474(S)
 251479(S)
 251490(S)
 251524(S)
 251667(S)
 251748(S)
 251758(S)
 251852(S)
 251862(S)

Eng Technician (SJ3) (LL) 55
 251480(S)
 251484(S)
 251485(S)
 251486(S)
 251492(S)
 251615(S)
 251678(S)
 251762(S)
 251854(S)
 251857(S)
 251875(S)
 251876(S)

Eng Asst II (GP) 19
 251443
 251449
 251457
 251459
 251541
 251548
 251555
 251557
 251579
 251580
 251582
 251637
 251659
 251660
 251661
 251761
 251812
 251843
 253405
 253521
 253525
 253526
 253527
 253528

Maint Gen (J) (LL) 54
 251494

Eng Asst I (GP) 17
 251625

Eng Technician (SJ2) (LL) 57
 251502(S) 251693(S)
 251507(S) 251700(S)
 251508(S) 251701(S)
 251511(S) 251710(S)
 251518(S) 251745(S)
 251519(S) 251787(S)
 251525(S) 251880(S)
 251566(S)
 251569(S)
 251596(S)
 251684(S)
 251688(S)
 251689(S)

Eng Tech (LL) 59/57
 Interns
 25IN1005
 25IN1006
 25IN1007
 25IN1008
 25IN1014

DESIGN ENGINEERING STAFF ASSIGNED AS REQUIRED

Eng Arch I/II (GP) 22/23
 253607

Eng Arch I (GP) 22
 251382
 251432
 251437
 251446
 251531
 253452
 253608

Env Impact Analysts III (GP) 19
 251536
 251771
 253593

Env Impact Analysts II/III (GP) 17/19
 252410

Env Impact Analysts II (GP) 17
 251604

Env Impact Analysts I/II/III (GP) 15/17/19
 251426
 251532
 251545
 251556
 251850

Eng Asst III (GP) 21
 250165
 251394
 251530
 251537
 251599
 251607
 253449
 253453

Drafting Tech III (GP) 15
 251832
 251559
 251558
 251770

Eng Asst I/II (GP) 17/19
 251538
 251542
 251546
 251622
 251704
 251777
 251802

Eng Asst I/II/III (GP) 17/19/21
 250202

College Intern I/II/III/IV (EE)8/9/10/12
 25IN1202
 25IN1204

Eng Asst III/Eng Associate/
 Eng- Arch I (GP) 21/22
 251540
 251570
 251731

ROW & UTILITIES STAFF ASSIGNED AS REQUIRED

Eng Arch I (GP) 22
251396
251434

Eng Arch I (GP) 22
251434

Eng Asst I/II (GP) 17/19
251683

Survey – Lead (LL) 53
251612s
251871s

Survey – J (LL) 54
251500s
251565s

Survey – SJ (LL) 56
251694s
251682s

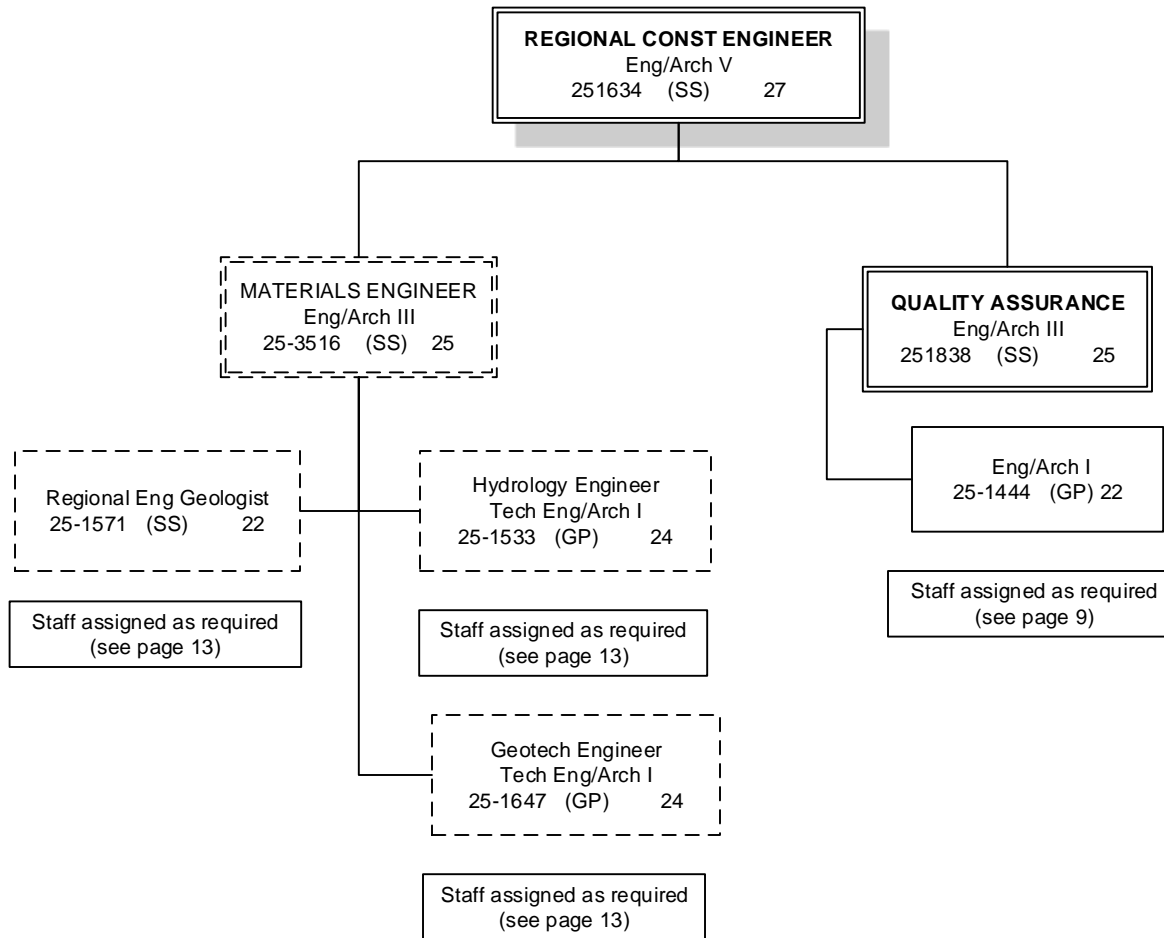
Land Surveyor I (GP) 21
251740
251768

ROW Agent III (GP) 18
251388
251391
251399
251416
251460
251544
251572
251729

Eng Asst III (GP) 21
251406
251409
251421
251611
253450

ROW Agent II (GP) 16
251400
251423
253694

ROW Asst (GP) 12
251425



MATERIALS & QUALITY ASSURANCE STAFF ASSIGNED AS REQUIRED

Eng/Arch I (GP) 22
251551
253574

Eng Asst III (GP) 21
251439
251441

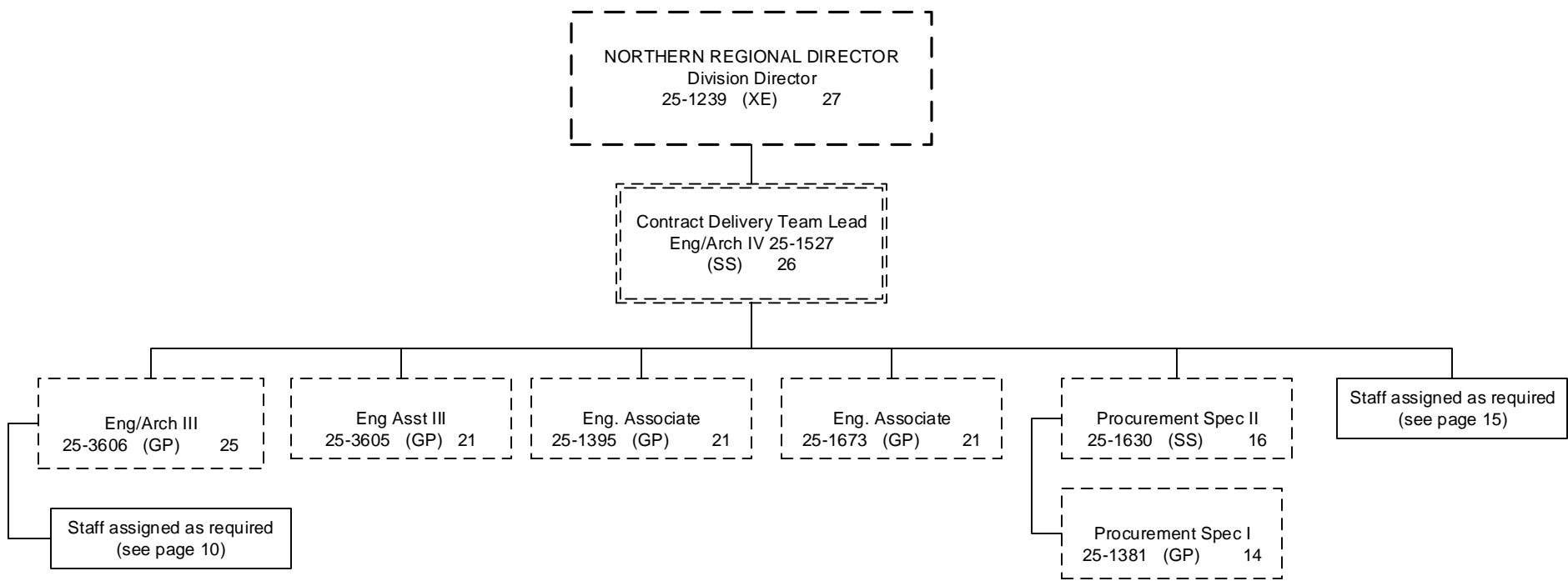
Eng Geologist II (GP) 18
250732
251635
251636

Eng Geologist I/II (GP) 16/18
251624

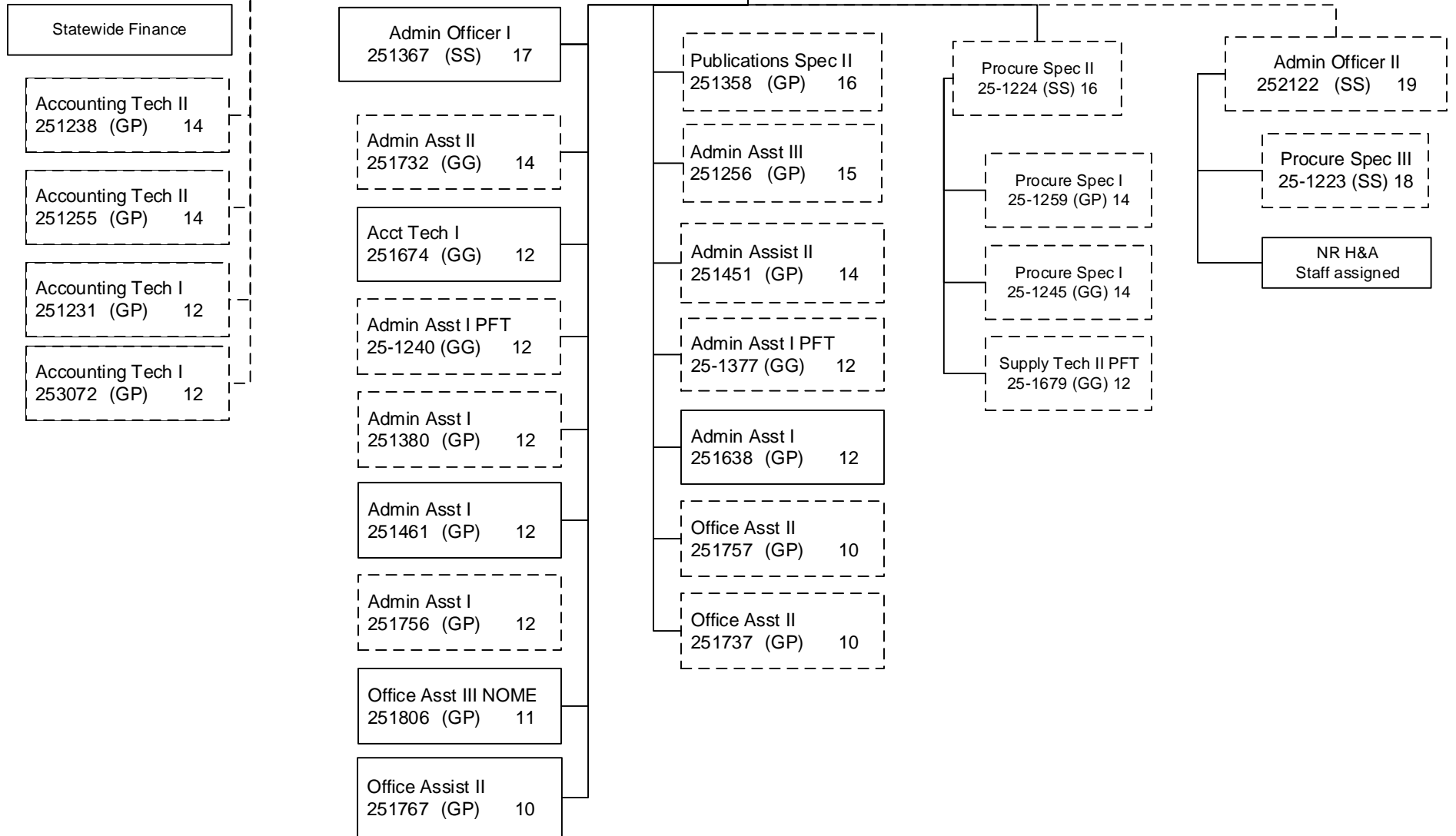
Driller – Journey (LL) 53
250723
251642
251645
251775s

Driller – SJ (LL) 54
250247
251491s
251644s

Mat Lab Tech I/II/III/IV/J (LL)
59/57/56/54/53
251643s
251648s
251776s



Admin Team Lead
 Admin Operations Mngr
 251248 (SS) 22



*Task assigned to Contracts

