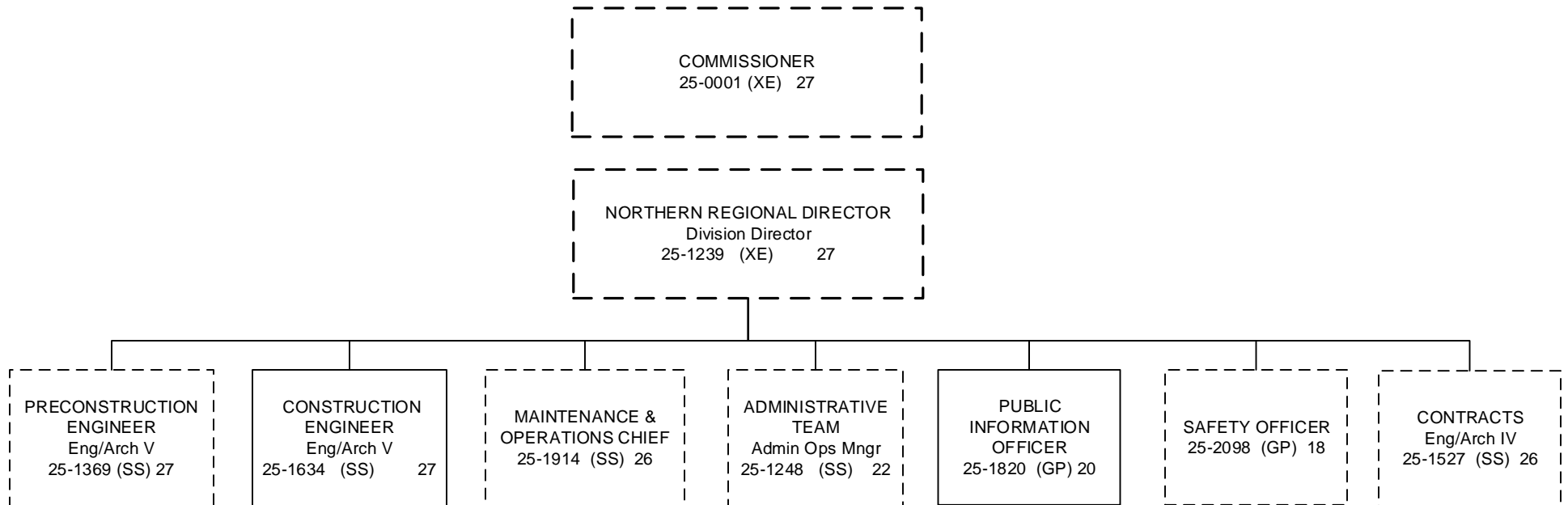
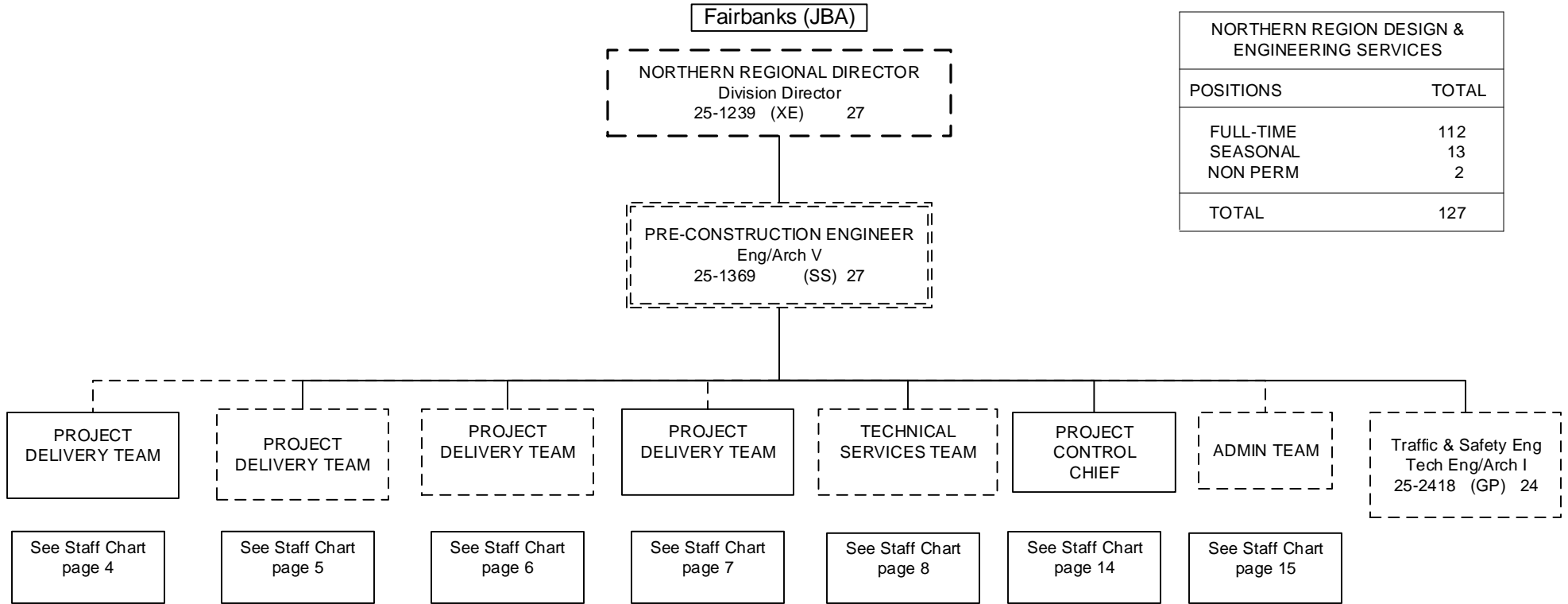


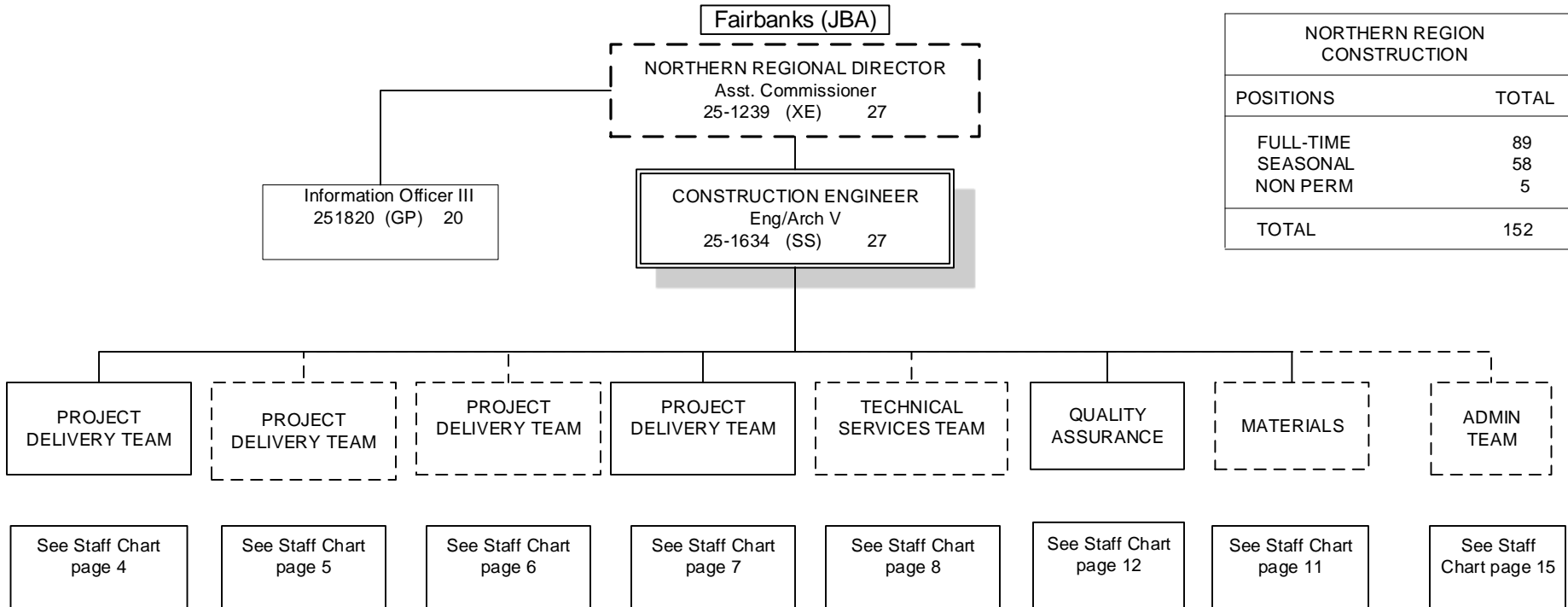
DEPARTMENT OF TRANSPORTATION AND PUBLIC FACILITIES  
NORTHERN REGION CONSTRUCTION  
FY22 GOVERNORS

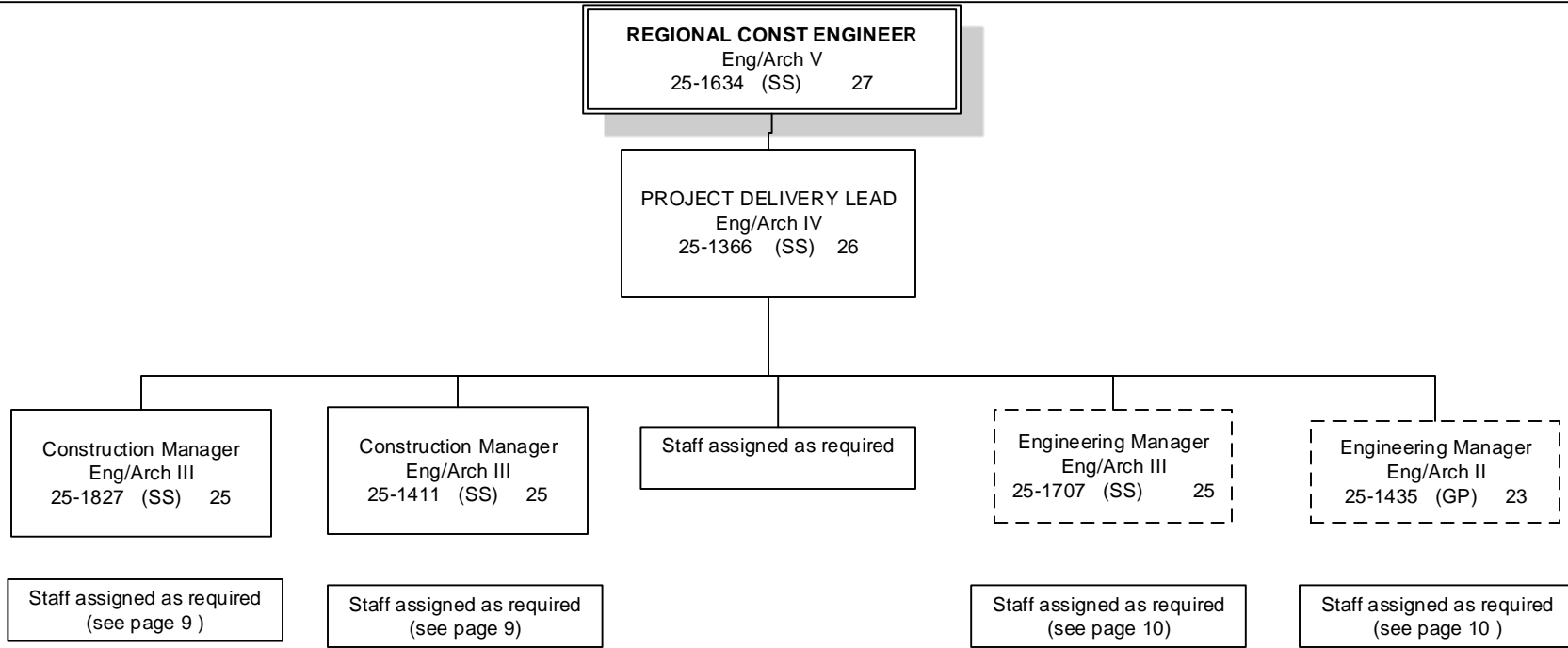


All positions located in Fairbanks unless otherwise noted



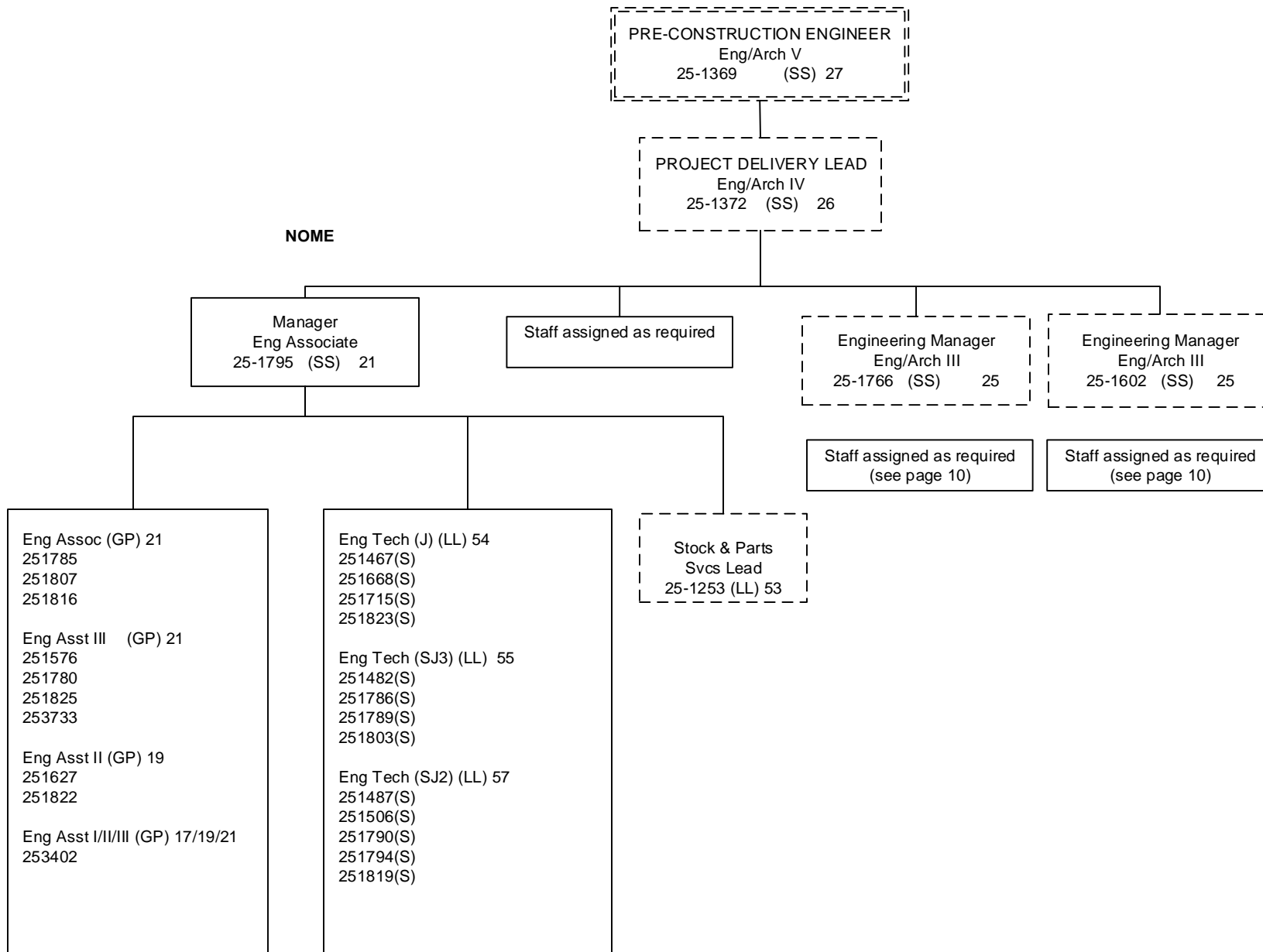
NORTHERN REGION DESIGN & ENGINEERING SERVICES	
POSITIONS	TOTAL
FULL-TIME	112
SEASONAL	13
NON PERM	2
<b>TOTAL</b>	<b>127</b>

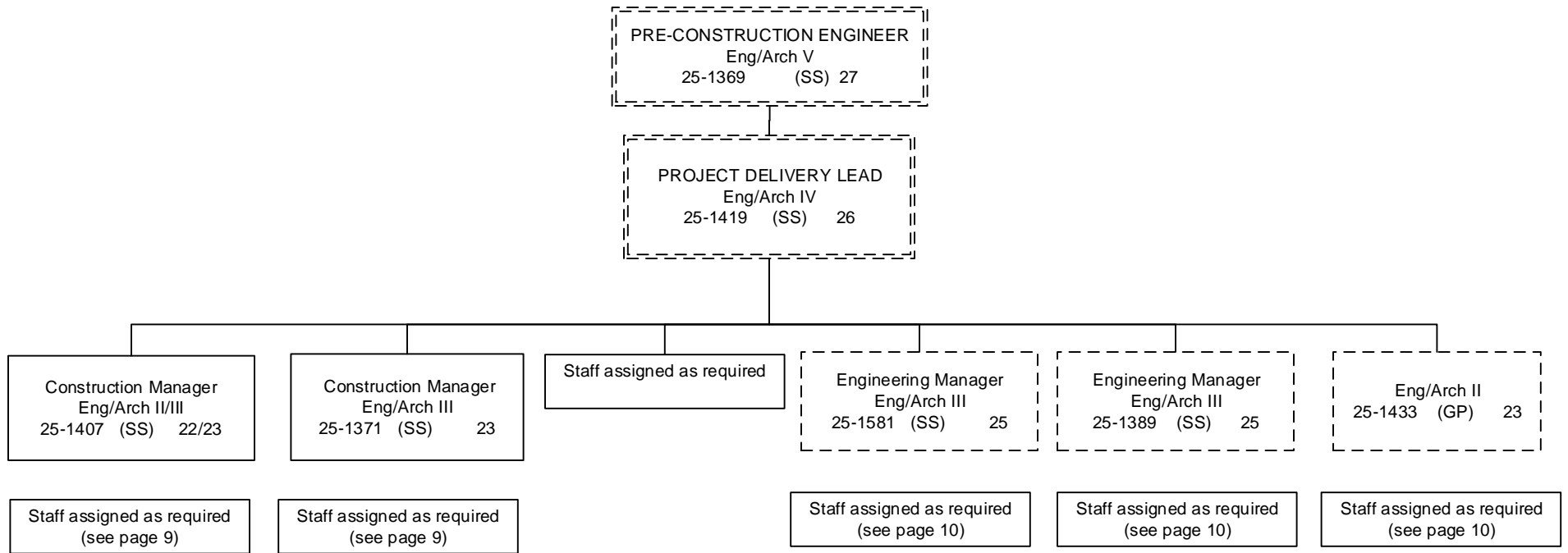


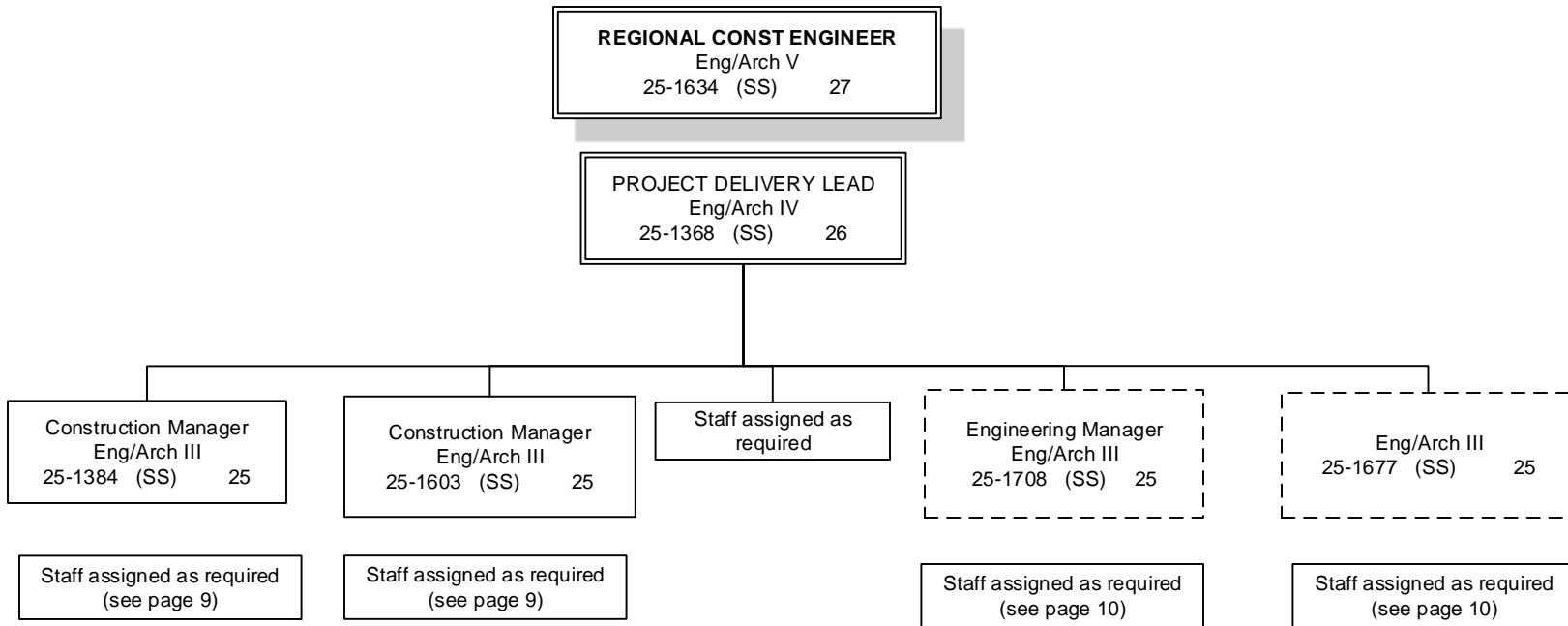


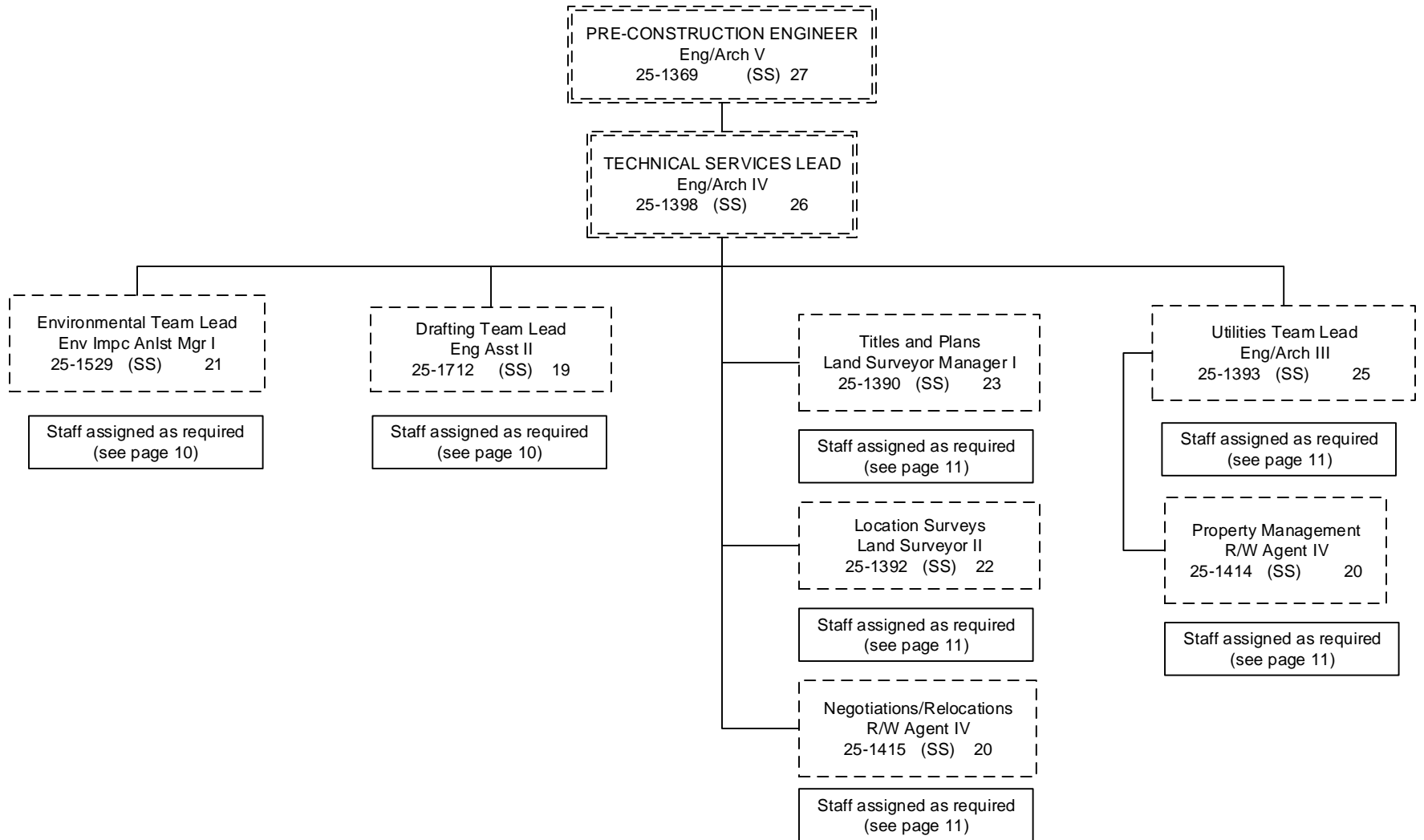
All positions located in Fairbanks unless otherwise noted

-- line positions not counted here











CONSTRUCTION ENGINEERING STAFF ASSIGNED AS REQUIRED

Eng Associate (GP) 21  
 251387  
 251405  
 251573  
 251609  
 251705  
 251797  
 253401

Eng Asst III (GP) 21  
 251412  
 251436  
 251447  
 251455  
 251473  
 251534  
 251578  
 251632  
 251639  
 251656  
 251657  
 251658  
 251742  
 251765  
 251781  
 251782  
 251784  
 251796  
 253730  
 253731  
 253732

Eng Technician (J) (LL) 54  
 251464(S)  
 251465(S)  
 251468(S)  
 251469(S)  
 251474(S)  
 251479(S)  
 251490(S)  
 251524(S)  
 251667(S)  
 251748(S)  
 251758(S)  
 251852(S)  
 251862(S)

Eng Technician (SJ3) (LL) 55  
 251480(S)  
 251484(S)  
 251485(S)  
 251486(S)  
 251492(S)  
 251615(S)  
 251678(S)  
 251762(S)  
 251854(S)  
 251857(S)  
 251875(S)  
 251876(S)

Eng Asst II (GP) 19  
 251443  
 251449  
 251457  
 251459  
 251541  
 251548  
 251555  
 251557  
 251579  
 251580  
 251582  
 251637  
 251659  
 251660  
 251661  
 251761  
 251812  
 251843  
 253405  
 253521  
 253525  
 253526  
 253527  
 253528

Maint Gen (J) (LL) 54  
 251494

Eng Asst I (GP) 17  
 251625

Eng Technician (SJ2) (LL) 57  
 251502(S) 251693(S)  
 251507(S) 251700(S)  
 251508(S) 251701(S)  
 251511(S) 251710(S)  
 251518(S) 251745(S)  
 251519(S) 251787(S)  
 251525(S) 251880(S)  
 251566(S)  
 251569(S)  
 251596(S)  
 251684(S)  
 251688(S)  
 251689(S)

Eng Tech (LL) 59/57  
 Interns  
 25IN1005  
 25IN1006  
 25IN1007  
 25IN1008  
 25IN1014

DESIGN ENGINEERING STAFF ASSIGNED AS REQUIRED

Eng Arch I/II (GP) 22/23  
 253607

Eng Arch I (GP) 22  
 251382  
 251432  
 251437  
 251446  
 251531  
 253452  
 253608

Env Impact Analysts III (GP) 19  
 251536  
 251771  
 253593

Env Impact Analysts II/III (GP) 17/19  
 252410

Env Impact Analysts II (GP) 17  
 251604

Env Impact Analysts I/II/III (GP) 15/17/19  
 251426  
 251532  
 251545  
 251556  
 251850

Eng Asst III (GP) 21  
 250165  
 251394  
 251530  
 251537  
 251599  
 251607  
 253449  
 253453

Drafting Tech III (GP) 15  
 251832  
 251559  
 251558  
 251770

Eng Asst I/II (GP) 17/19  
 251538  
 251542  
 251546  
 251622  
 251704  
 251777  
 251802

Eng Asst I/II/III (GP) 17/19/21  
 250202

College Intern I/II/III/IV (EE)8/9/10/12  
 25IN1202  
 25IN1204

Eng Asst III/Eng Associate/  
 Eng- Arch I (GP) 21/22  
 251540  
 251570  
 251731

ROW & UTILITIES STAFF ASSIGNED AS REQUIRED

Eng Arch I (GP) 22  
251396  
251434

Eng Arch I (GP) 22  
251434

Eng Asst I/II (GP) 17/19  
251683

Survey – Lead (LL) 53  
251612s  
251871s

Survey – J (LL) 54  
251500s  
251565s

Survey – SJ (LL) 56  
251694s  
251682s

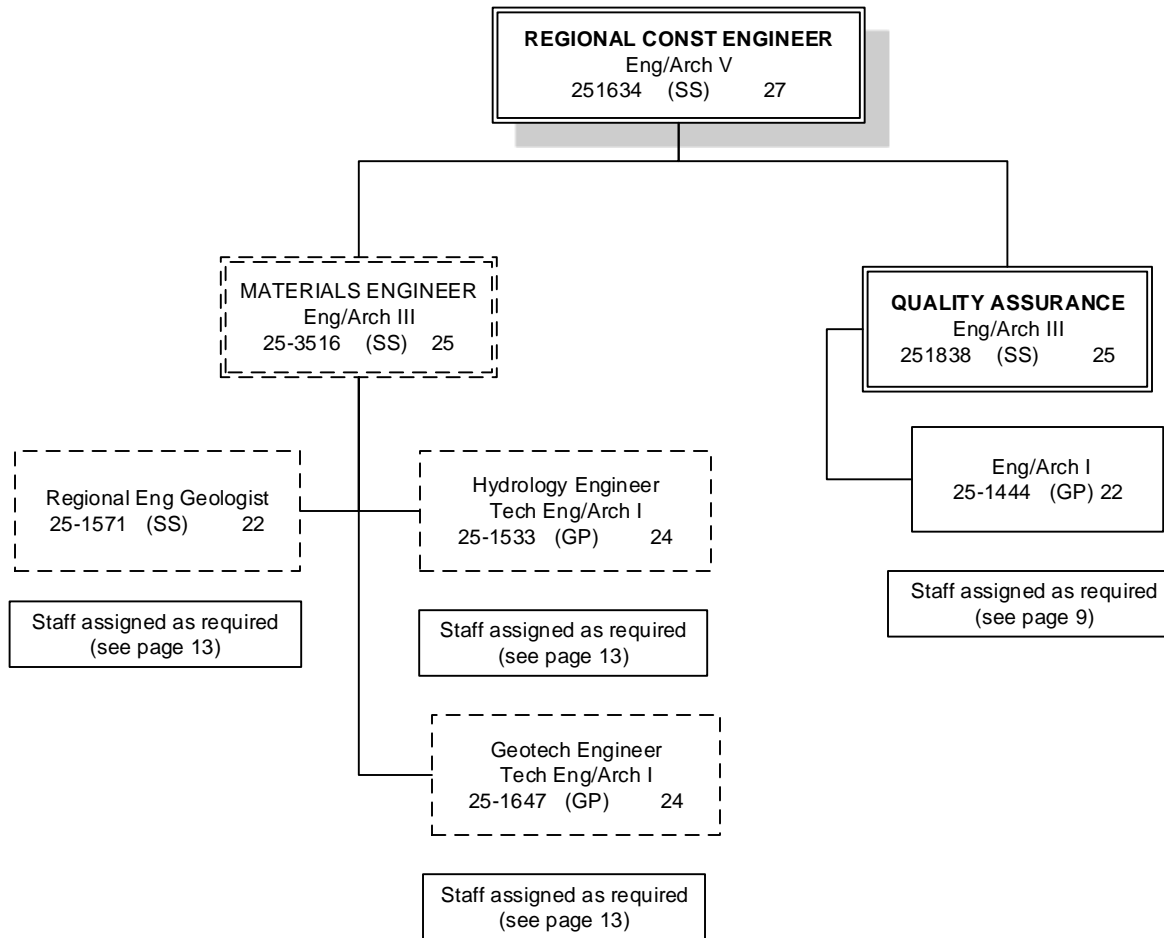
Land Surveyor I (GP) 21  
251740  
251768

ROW Agent III (GP) 18  
251388  
251391  
251399  
251416  
251460  
251544  
251572  
251729

Eng Asst III (GP) 21  
251406  
251409  
251421  
251611  
253450

ROW Agent II (GP) 16  
251400  
251423  
253694

ROW Asst (GP) 12  
251425



MATERIALS & QUALITY ASSURANCE STAFF ASSIGNED AS REQUIRED

Eng/Arch I (GP) 22  
251551  
253574

Eng Asst III (GP) 21  
251439  
251441

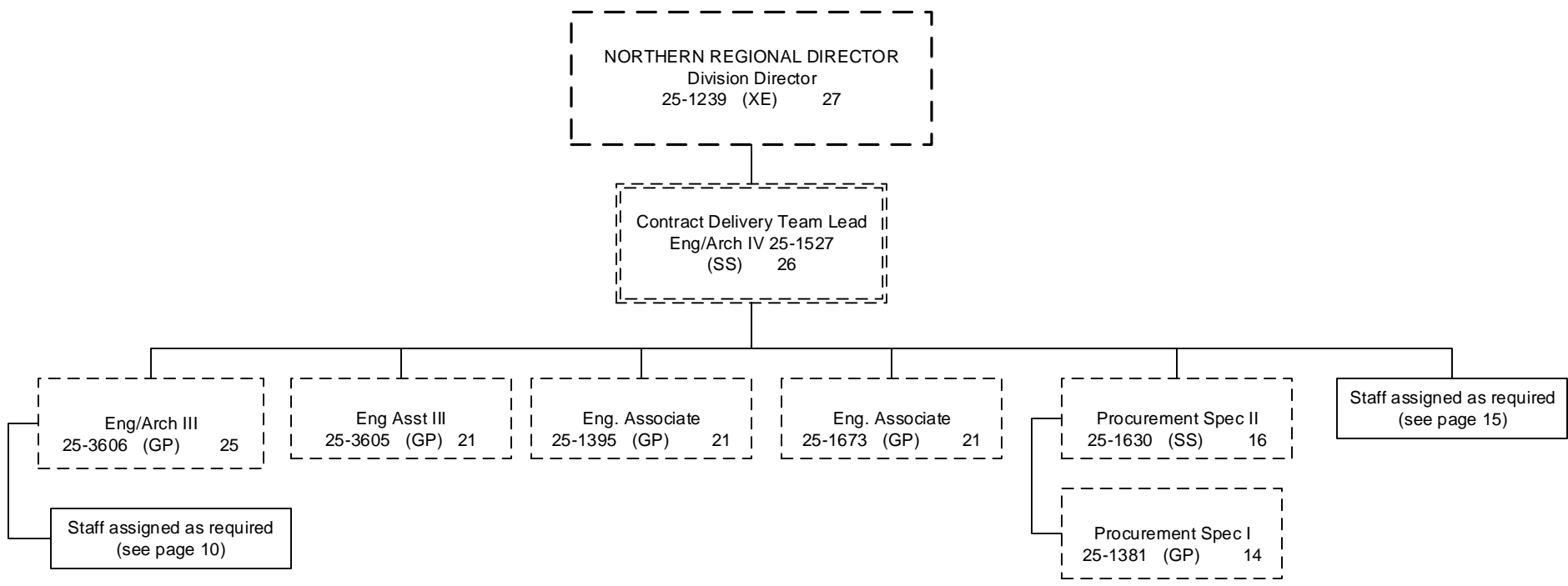
Eng Geologist II (GP) 18  
250732  
251635  
251636

Eng Geologist I/II (GP) 16/18  
251624

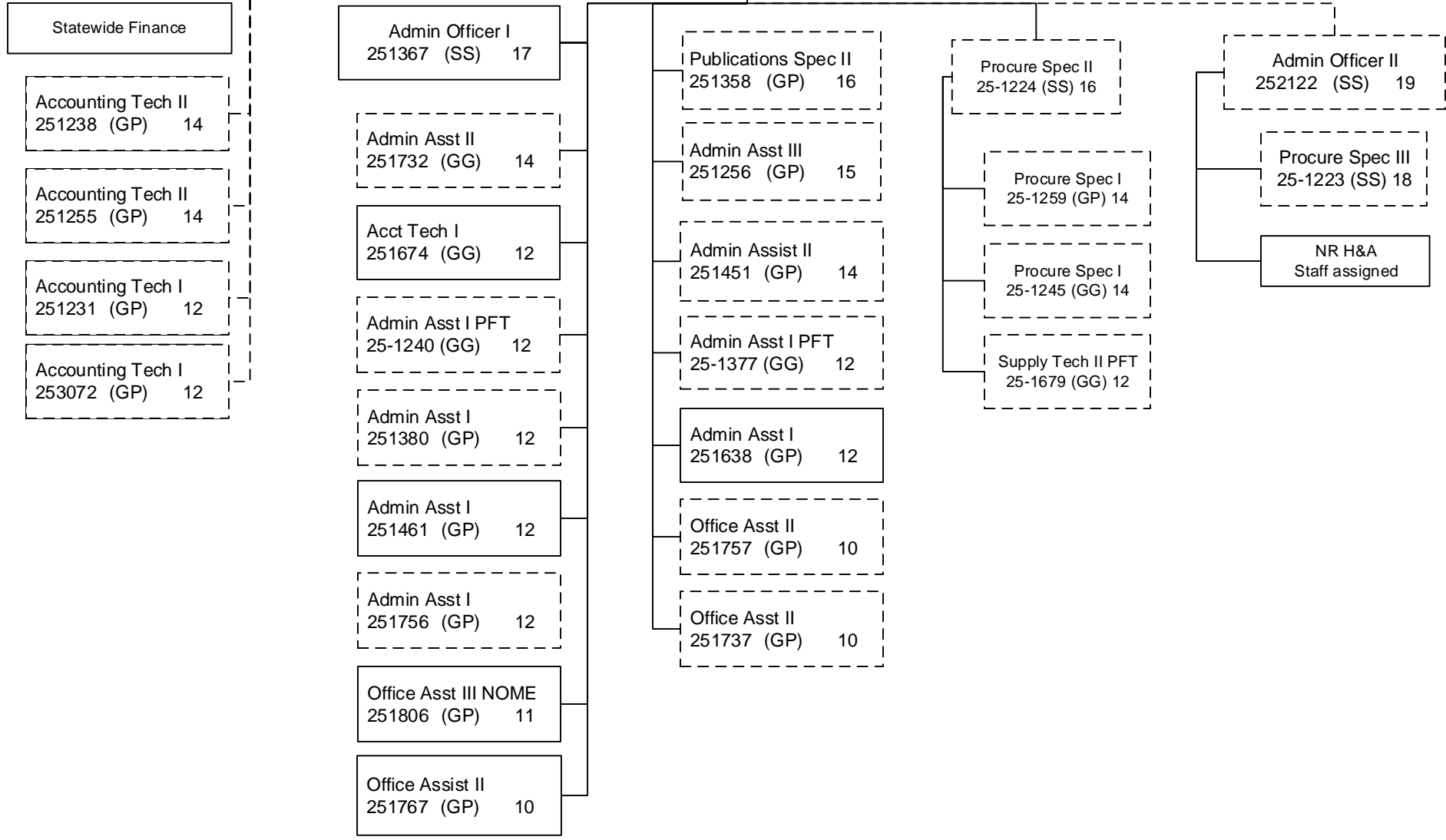
Driller – Journey (LL) 53  
250723  
251642  
251645  
251775s

Driller – SJ (LL) 54  
250247  
251491s  
251644s

Mat Lab Tech I/II/III/IV/J (LL)  
59/57/56/54/53  
251643s  
251648s  
251776s



Admin Team Lead  
 Admin Operations Mngr  
 251248 (SS) 22



\*Task assigned to Contracts

