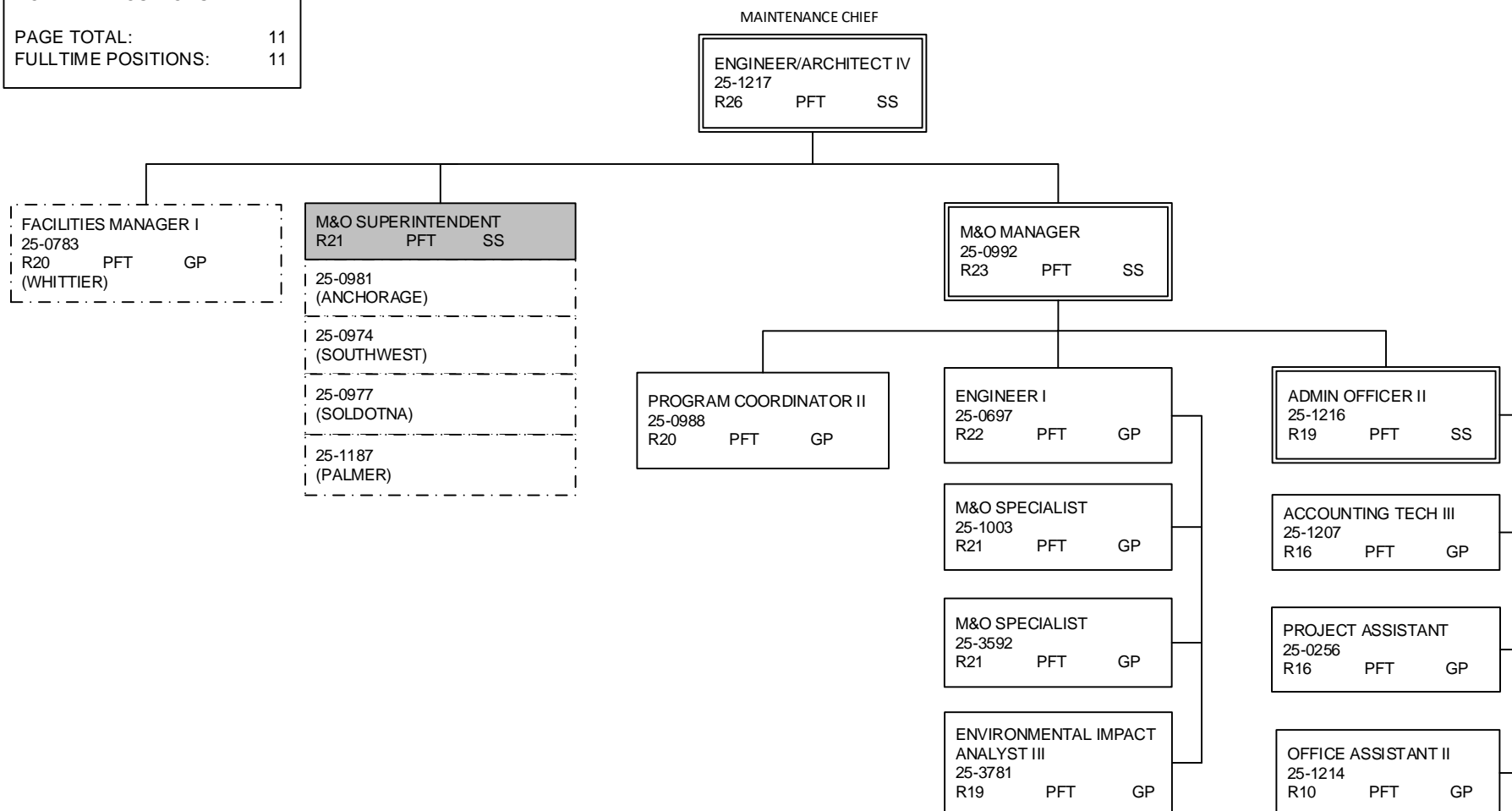


**DEPARTMENT OF TRANSPORTATION AND PUBLIC FACILITIES
RDU: HIGHWAYS, AVIATION AND FACILITIES
COMPONENT: CENTRAL REGION HIGHWAYS & AVIATION (564)
FY2022 GOVERNOR'S BUDGET**

**MAINTENANCE &
OPERATIONS
ADMINISTRATION
Anchorage**

COMPONENT TOTAL:	181
FULLTIME POSITIONS:	163
PARTTIME POSITIONS:	4
NONPERM POSITIONS:	14
PAGE TOTAL:	11
FULLTIME POSITIONS:	11



NOTE: ALL POSITIONS LOCATED IN ANCHORAGE EXCEPT WHERE NOTED.

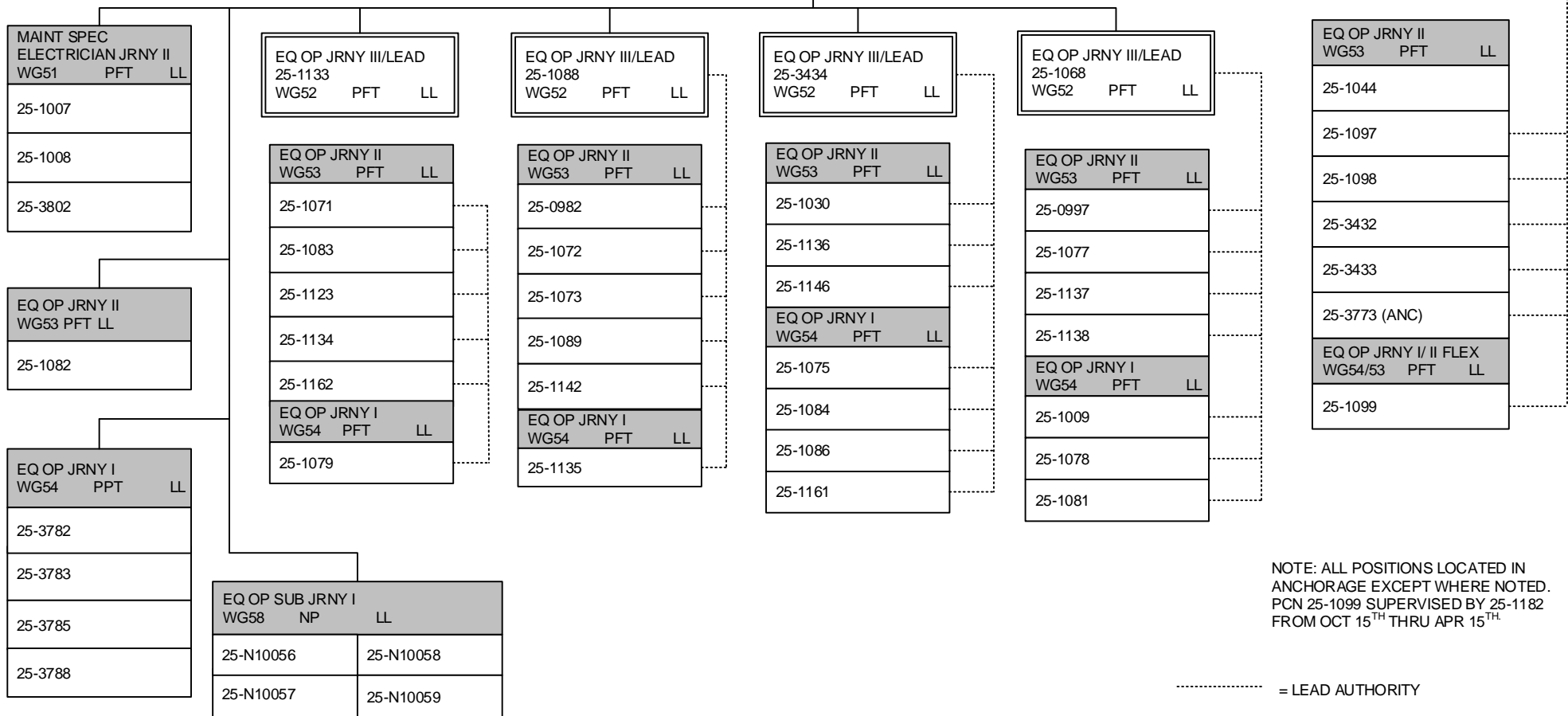
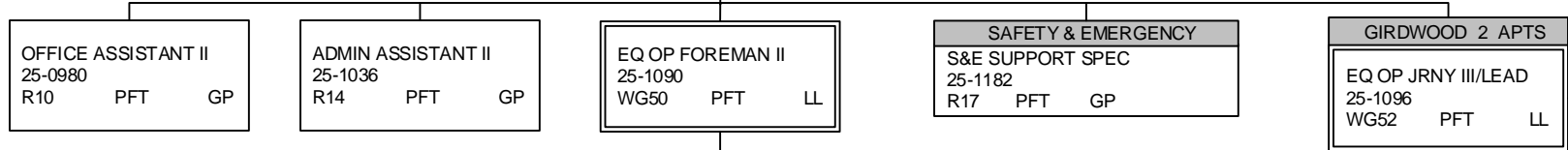
**DEPARTMENT OF TRANSPORTATION AND PUBLIC FACILITIES
RDU: HIGHWAYS, AVIATION AND FACILITIES
COMPONENT: CENTRAL REGION HIGHWAYS & AVIATION (564)
FY2022 GOVERNOR'S BUDGET**

ANCHORAGE DISTRICT

TOTAL POSITIONS THIS DISTRICT: 55
FULL TIME POSITIONS: 47
PART TIME POSITIONS: 4
NON PERM POSITIONS: 4

ENGINEER/ARCHITECT IV
25-1217
R26 PFT SS

M&O SUPERINTENDENT
25-0981
R21 PFT SS

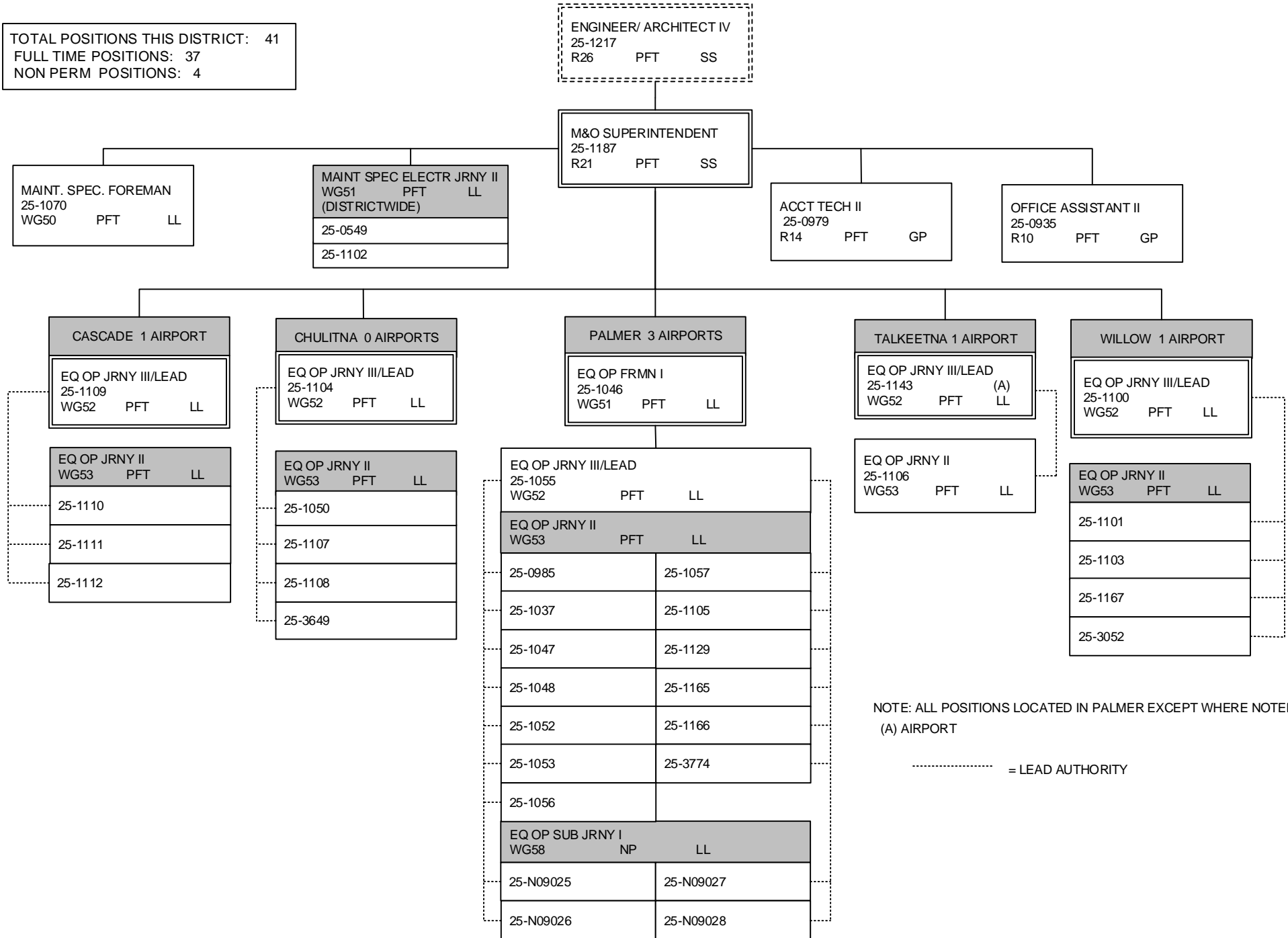


NOTE: ALL POSITIONS LOCATED IN ANCHORAGE EXCEPT WHERE NOTED. PCN 25-1099 SUPERVISED BY 25-1182 FROM OCT 15TH THRU APR 15TH.

DEPARTMENT OF TRANSPORTATION AND PUBLIC FACILITIES
RDU: HIGHWAYS, AVIATION AND FACILITIES
COMPONENT: CENTRAL REGION HIGHWAYS & AVIATION (564)
FY2022 GOVERNOR'S BUDGET

MATSU DISTRICT

TOTAL POSITIONS THIS DISTRICT: 41
 FULL TIME POSITIONS: 37
 NON PERM POSITIONS: 4



NOTE: ALL POSITIONS LOCATED IN PALMER EXCEPT WHERE NOTED.
 (A) AIRPORT

----- = LEAD AUTHORITY

**DEPARTMENT OF TRANSPORTATION AND PUBLIC FACILITIES
RDU: HIGHWAYS, AVIATION AND FACILITIES
COMPONENT: CENTRAL REGION HIGHWAYS & AVIATION (564)
FY2022 GOVERNOR'S BUDGET**

PENINSULA DISTRICT

TOTAL POSITIONS THIS DISTRICT: 51
FULL TIME POSITIONS: 45
NON PERM POSITIONS: 6

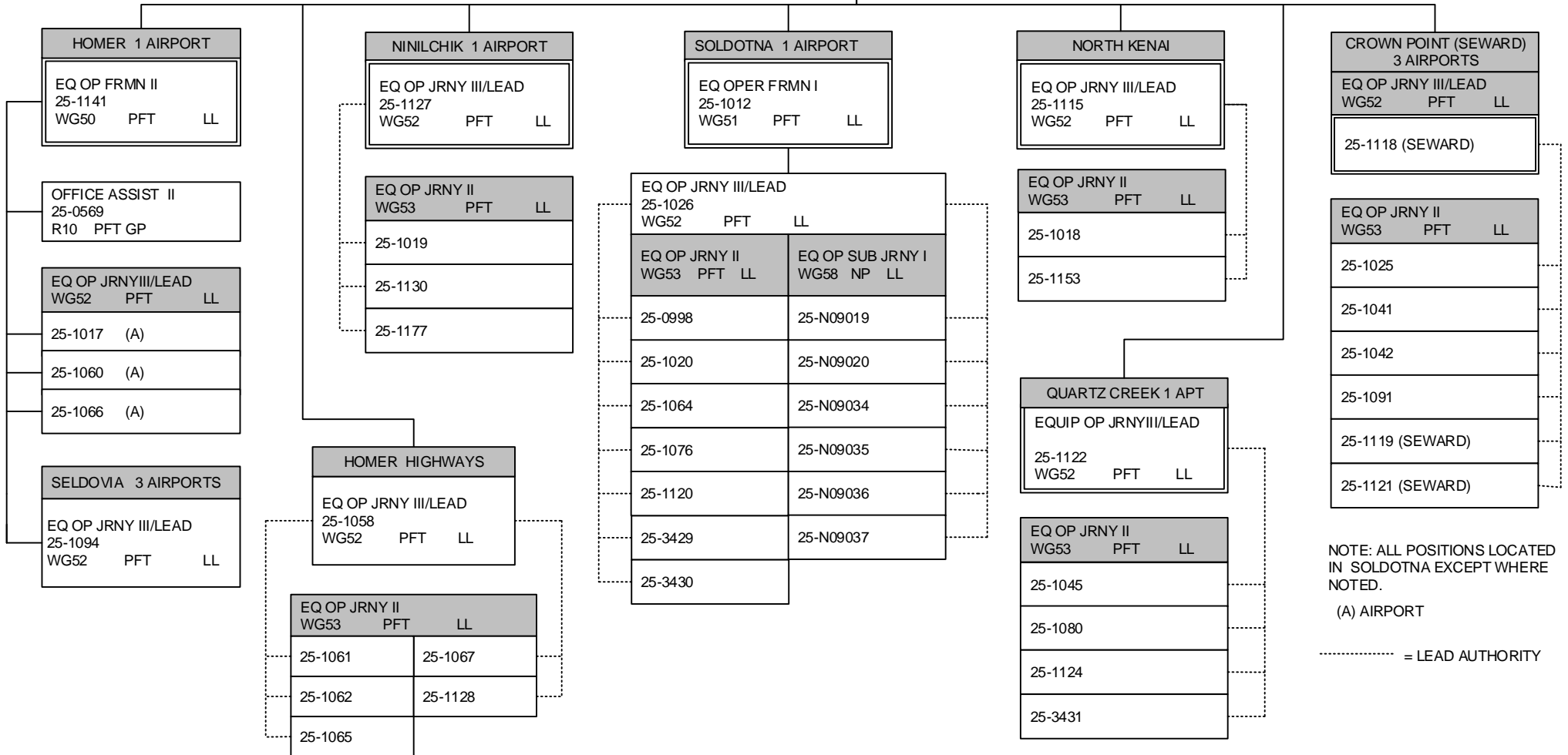
ENGINEER/ ARCHITECT IV
25-1217
R26 PFT SS

M&O SUPERINTENDENT
25-0977
R21 PFT SS

MTN SPEC ELECT JRNY II
WG51 PFT LL
(DISTRICTWIDE)
25-0565
25-1021

ACCT TECH II
25-1010
R14 PFT GG

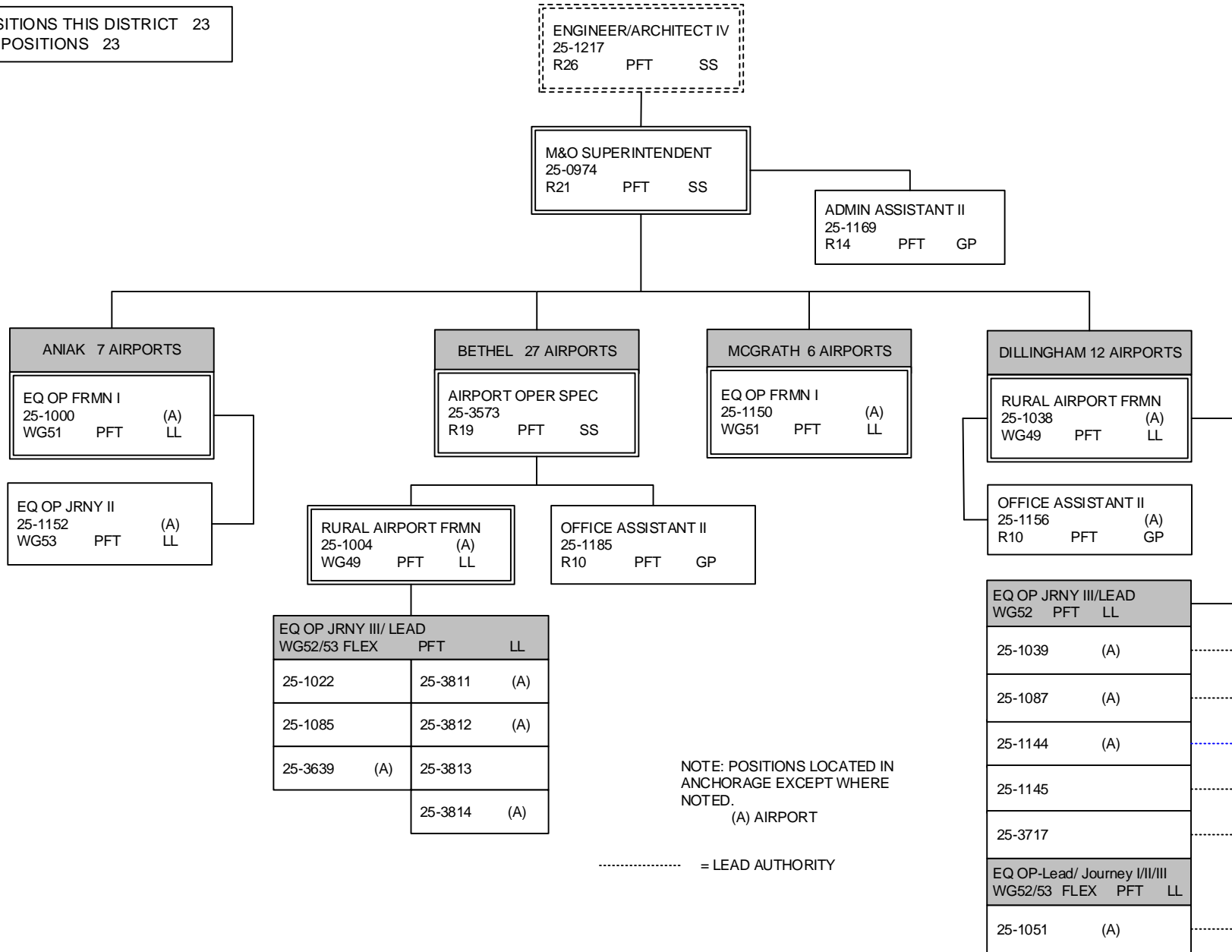
OFFICE ASSISTANT II
25-0983
R10 PFT GP



DEPARTMENT OF TRANSPORTATION AND PUBLIC FACILITIES
RDU: HIGHWAYS, AVIATION AND FACILITIES
COMPONENT: CENTRAL REGION HIGHWAYS & AVIATION (564)
FY2022 GOVERNOR'S BUDGET

SOUTHWEST DISTRICT

TOTAL POSITIONS THIS DISTRICT 23
 FULL TIME POSITIONS 23



NOTE: POSITIONS LOCATED IN ANCHORAGE EXCEPT WHERE NOTED.
 (A) AIRPORT

----- = LEAD AUTHORITY