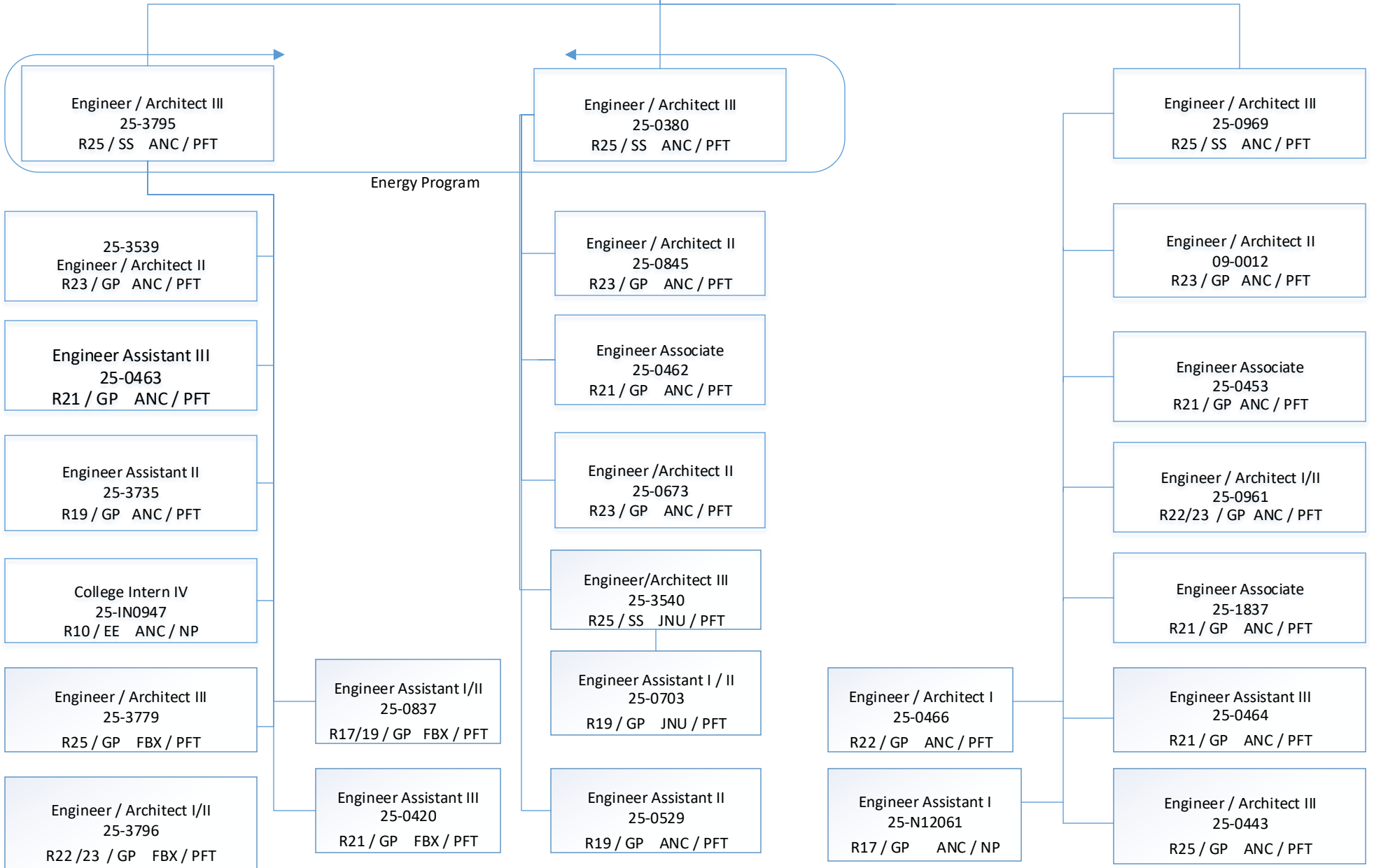
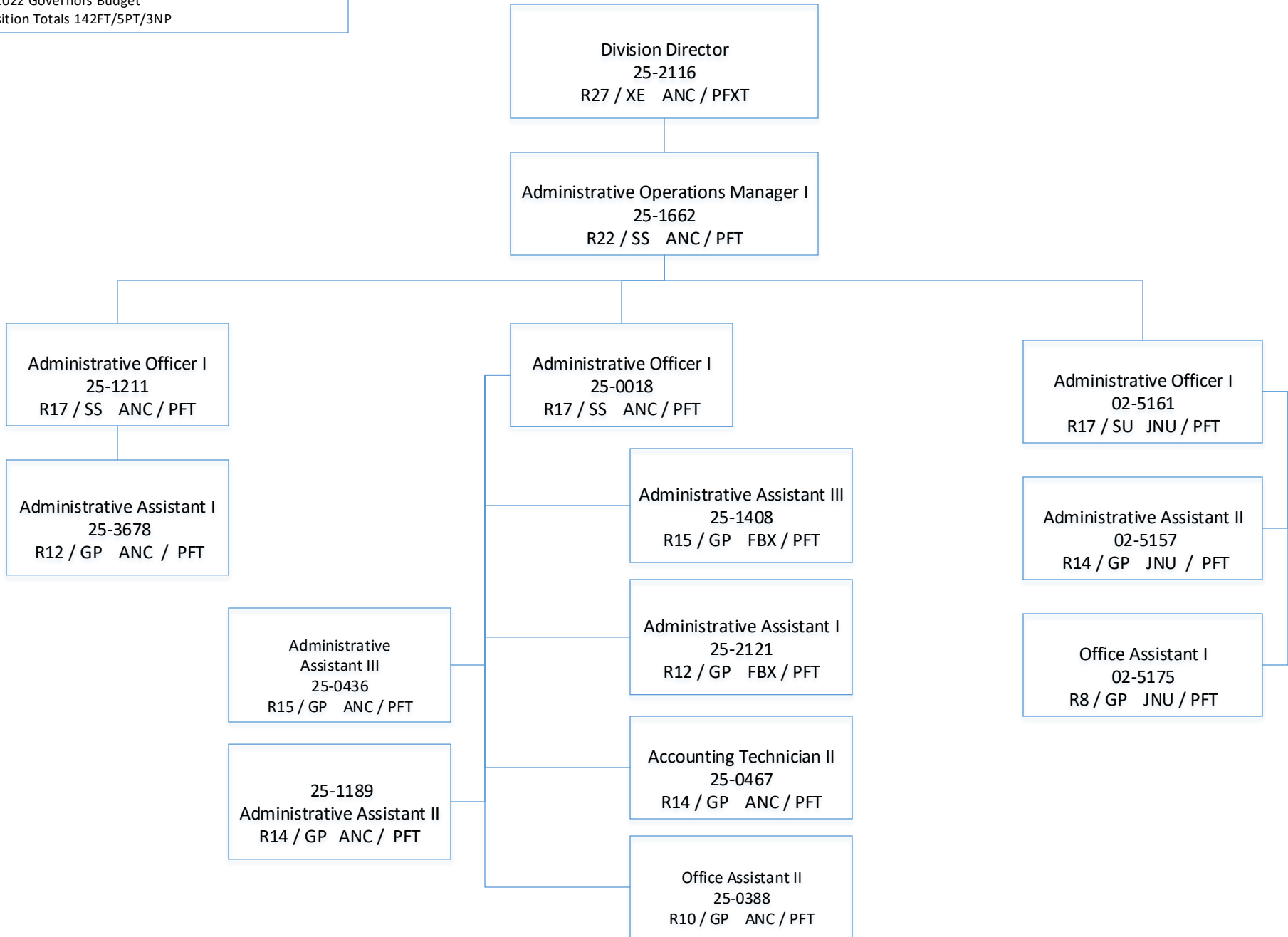


DEPARTMENT OF TRANSPORTATION & PUBLIC FACILITIES
 RDU: HIGHWAYS, AVIATION AND FACILITIES
 COMPONENT: FACILITIES SERVICES (3195)
 Statewide Public Facilities
 FY2022 Governors Budget
 Position Totals 142FT/5PT/3NP

Division Director
 25-2116
 R27 / XE ANC / PFXT



DEPARTMENT OF TRANSPORTATION & PUBLIC FACILITIES
 RDU: HIGHWAYS, AVIATION AND FACILITIES
 COMPONENT: FACILITIES SERVICES (3195)
 Administrative Services
 FY2022 Governors Budget
 Position Totals 142FT/5PT/3NP



DEPARTMENT OF TRANSPORTATION & PUBLIC FACILITIES
 RDU: HIGHWAYS, AVIATION AND FACILITIES
 COMPONENT: FACILITIES SERVICES (3195)
 Maintenance and Operations
 FY2022 Governors Budget
 Position Totals 142FT/5PT/3NP

Division Director
 25-2116
 R27 / XE ANC / PFXT

Division Operations Manager
 25-3653
 R24 / SS FBX / PFT

Facilities Manager II
 02-5061
 R21 / SS ANC / PFT

Admin Assistant I
 20-1070
 R12 / GP ANC / PFT

Building Maintenance Manager
 25-1186
 R22 / SS ANC / PFT

Maint. Spec BFC Foreman
 25-1200
 R50 / LL ANC / PFT

Maint. Spec BFC Foreman
 05-8435
 R50 / LL Seward / PFT

Maint. Gen Journey
 25-3777
 R54 / LL ANC / PFT

Maint Spec BFC Jmy II / Lead
 R51 / LL ANC / PFT

25-3827
 25-1196 Kenai
 25-1198
 25-1201
 25-0764 Bethel
 25-1195 Palmer
 25-1191

Maint. Gen Journey
 R54 / LL ANC / PFT
 25-2228
 25-1205

Maint. Gen Sub-Journey II
 25-1190
 R56 / LL ANC / PFT

Maint. Gen Sub-Journey I
 25-3685
 R58 / LL ANC / PPT

Maint. Spec BFC Journey I
 R53 / LL ANC / PFT

25-1040
 25-1199 Kenai
 25-0354
 25-0588
 25-1192
 25-1203
 25-1204
 25-3477
 25-3582

Maint. Spec Elec. Journey II
 R51 / LL ANC / PFT
 25-1193
 25-1194
 25-3778

Maint. Spec Plumb Jmy II
 R51 / LL ANC / PFT
 25-1202
 25-3348

Maint. Spec Plumb Jmy II Lead
 05-8389
 R51 / LL Seward / PFT

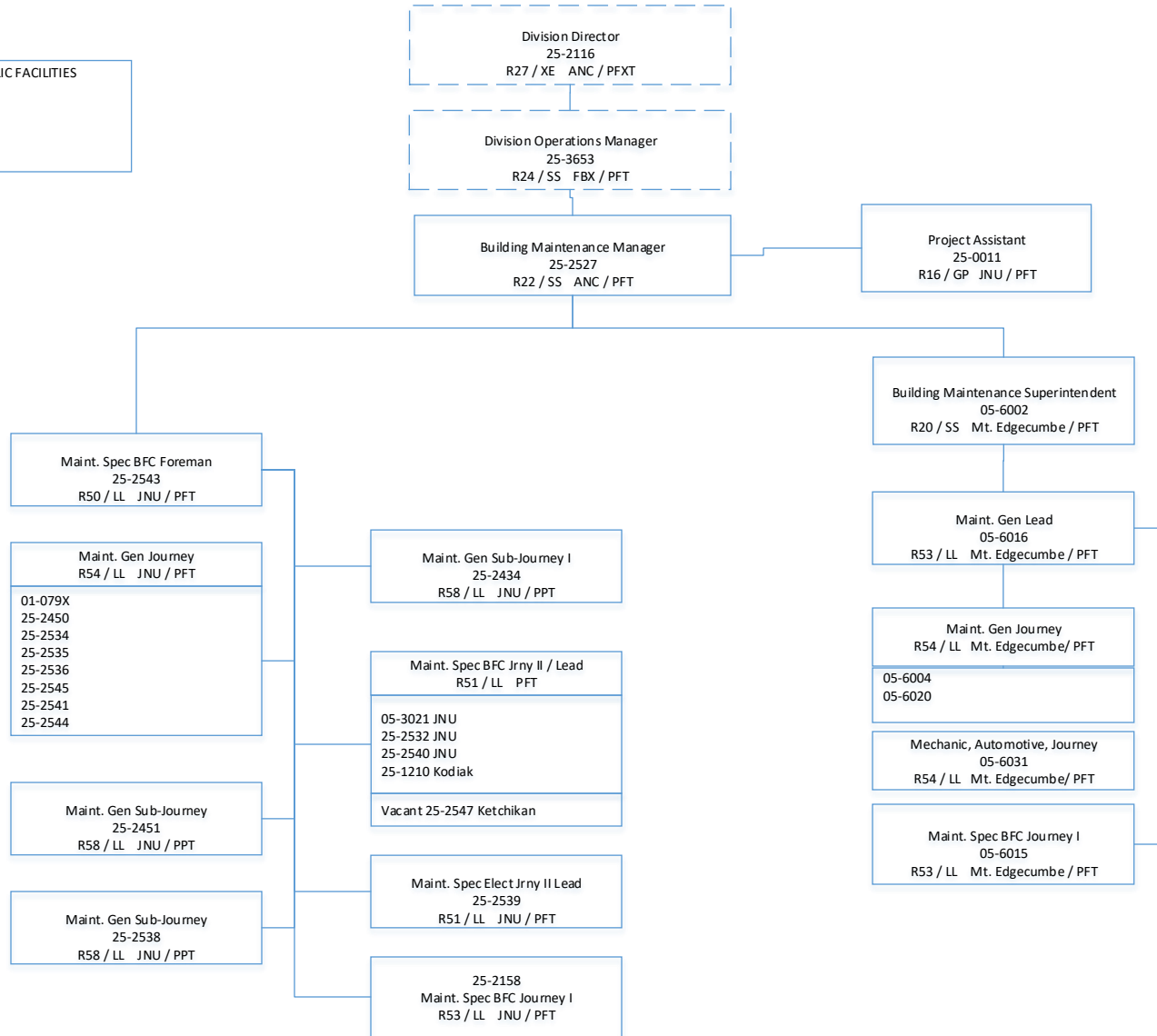
Maint. Spec Elec. Journey II Lead
 05-8519
 R51 / LL Seward / PFT

Maint Spec BFC Jmy II / Lead
 05-8653
 R51 / LL Seward / PFT

Maint. Gen Journey
 07-4554
 R54 / LL Seward / PFT

Maint. Gen Journey
 07-N14002
 R54 / LL Seward / NP

DEPARTMENT OF TRANSPORTATION & PUBLIC FACILITIES
 RDU: HIGHWAYS, AVIATION AND FACILITIES
 COMPONENT: FACILITIES SERVICES (3195)
 Maintenance and Operations
 FY2022 Governors Budget
 Position Totals 142FT/5PT/3NP



DEPARTMENT OF TRANSPORTATION & PUBLIC FACILITIES
 RDU: HIGHWAYS, AVIATION AND FACILITIES
 COMPONENT: FACILITIES SERVICES (3195)
 Maintenance and Operations
 FY2022 Governors Budget
 Position Totals 142FT/5PT/3NP

