

# **State of Alaska FY2022 Governor's Operating Budget**

## **Department of Transportation/Public Facilities Northern Region Highways and Aviation Component Budget Summary**

**Component: Northern Region Highways and Aviation**

**Contribution to Department's Mission**

Efficiently operate, preserve, protect, manage, and control the state's highway, airport, and harbor systems.

**Core Services**

- Winter operation, preservation, and repair, including snow plowing and removal, sanding, de-icing, avalanche prevention and control, drift control, and culvert thawing to keep roads and airports open and safe for travel.
- Summer road, bridge, and airport maintenance including grading, pothole patching, crack sealing, leveling of heaves and dips, brush clearing, street sweeping, dust control, ditch and culvert cleaning, erosion control, bike path preservation, fence and guardrail repair, bridge maintenance, bridge repair, sign preservation, street light maintenance, and traffic signal repair.
- Preserve airport lighting systems including airport runway and taxiway lighting, beacons, segmented circles, and wind cones.
- Maintain federally mandated airport security including access control, badging, and fencing in accordance with Federal Aviation Administration (FAA) and the Department of Homeland Security Transportation Security Administration (TSA) requirements.
- Airport operation compliance, including inspection and assurance, to ensure state airports are operated in accordance with FAA operating regulations.
- Communicating winter road conditions.
- Emergency disaster response to damages on transportation infrastructure.
- Trash removal along roadsides and at rest areas, turnouts, and campgrounds within department-owned and managed facilities and rights-of-way.
- Control of encroachments on driveways, access roads, signs, utilities, and other state rights-of-way.
- Provide an active avalanche prevention program.

**Major Component Accomplishments in 2020**

- Collected \$165.6 in damage recovery for infrastructure repairs due to traffic accidents and bridge strikes.
- Operated, maintained, and repaired 8,950 lane miles of roads, 1,729 lane miles of aviation operation surfaces at 104 airports, and 376 bridges.
- Applied chip seal, high float surfacing, and/or hot mix asphalt paving to 234 lane miles, essentially returning 1,650 centerline miles of roadway to significantly better service condition throughout the region.
- Protected 1,300 centerline miles of roadway by crack sealing or crack banding.
- Applied gravel material and/or dust palliative to 194 lane miles of gravel roadway returning 650 miles of roads to significantly better service condition throughout the region.
- Reshaped and applied dust palliatives to the runways, taxiways, and aprons on five rural airports: Selawik, Alakanuk, Russian Mission, Koyuk, and Elim.
- Cut approximately 2,843 lane miles of brush and trees along highways, side roads, and bike paths; and approximately 724 lane-miles of brush and trees at airports.
- Performed maintenance on 13 bridges, re-striped 6,697 lane miles of roadways, and repaired 3,346 linear feet of guardrail, fencing, and other barriers.
- Responded to and cleaned up 30 avalanches at Atigun Pass on the Dalton Highway. Responded to 18 major avalanches in Thompson Pass, nine of which blocked the Richardson Highway.
- Developed and administered five aggregate crushing contracts at 20 sites, stockpiling over 110,000 cubic yards of material for both federal and state repair projects.
- Continue to partner with Chitina Dipnetters Association through the Department of Fish and Game to secure funds and improve access to the fishery.
- Removed a regulated underground storage tank (UST) and continued closure of various injection wells around the region complying with an Environmental Protection Agency (EPA) consent decree. Additional scheduled closures in 2021 will complete the EPA closure deadline of December 2021 contingent upon receipt of funding.
- Partnered with Nenana Native Association to purchase unused bridge pilings to facilitate use as culverts for a crossing on the Road to Tanana.

- Lifted and leveled Goldstream Bridge on Ballaine Road (AADT 2456) to prolong its useful life as a Major Collector in the Fairbanks area.
- Two low corrosivity dust palliative products were applied to a total of approximately nine miles on the Dalton Highway in an effort to find a lower cost long-term solution to maintenance needs on this primarily gravel roadway.
- Responded to flooding event on Spengler Road in Delta Junction. Constructed a diversion dike returning Delta River to its floodplain thus protecting Spengler Road and several other private properties. Permanent erosion protection is currently being installed and is anticipated to be completed by winter 2020.

## **Key Component Challenges**

- Budgetary restrictions due to uncertain fund sources create unstable budget availability and impact advanced planning and decision making.
- Recruitment and retention across the division considering challenges with competitive wage rates and benefits, minimum qualification requirements, and personnel policies.
- Aging equipment fleet and inability to replace equipment due to lack of legislative authority and continued deferred replacement costs.
- Replacement of unrestricted general funds with Federal Highway Administration Preventative Maintenance dollars continue to severely reduce funding for critical road maintenance such as grading, pothole repair, drainage structure repair, and snow removal.
- Improving communication with industry and the travelling public regarding road and airport conditions and maintenance activities.
- Current budget levels are not adequate to support and maintain technologically advanced systems after initial investments, such as management systems and modern heavy equipment guidance systems.
- Depleted aggregated material sites. Current regulatory requirements make the permitting of replacement sites expensive and time-consuming, and land available for new sites is becoming harder to find and acquire.
- Continued reduction in the capital deferred maintenance program will result in the growth of deferred maintenance needs. If these needs are not addressed, it will result in the deterioration of roadway and airport infrastructure.
- Continued capital investment and expansion of infrastructure without increased operating funding to support maintenance of that infrastructure.
- Unanticipated costs of core services to support shared services processes that are inefficient and create additional administrative burdens.

## **COVID-19 Response and Telework Challenges**

- Initial response to the pandemic and Centers for Disease Control and Prevention recommendations required sourcing and working through the logistics to provide cleaning supplies, hand sanitizer, and face masks to 37 maintenance stations and all employees across the region. During the onset of response resource availability was an issue but resources in remote locations are now readily available.
- As communities across the region implemented their own COVID-19 mitigation plans the Department continues to work with them and within the State mandates to maintain critical infrastructure. Most of the Maintenance and Operations workforce is not able to telework due to their primary job duties as equipment operators. To protect staff and prevent the spread of the virus, personnel, equipment, vehicles, and camps were incorporated into a COVID-19 mitigation plan which includes proactive cleaning procedures, social distancing, staff scheduling changes, and best practices in accordance with state mandates.

## **Significant Changes in Results to be Delivered in FY2022**

- Funding to adequately maintain regional management systems has not been realized. The new maintenance management system from AgileAssets and the Maintenance Decision Support System are anticipated to be operated at reduced levels in FY2022, resulting in less informed decisions regarding commodity use and resource allocations, and will result in reduced efficiency.
- The addition of five new Road Weather information Systems (RWIS) will provide additional data points for integrated weather forecasting and road conditioning reports.

## Statutory and Regulatory Authority

AS 02 Aeronautics  
AS 19 Highways and Ferries  
AS 30 Harbors and Shipping  
AS 38 Motor Vehicles  
AS 44 State Government  
AAC 13 Public Safety  
AAC 14 Public Works  
AAC 17 DOT&PF  
CFR 14 Aeronautics  
CFR 49 Airport Security  
CRF 23 Highways

Contact Information
<p><b>Contact:</b> Jason Sakalaskas, Northern Region M&amp;O Chief <b>Phone:</b> (907) 451-2214 <b>E-mail:</b> <a href="mailto:jason.sakalaskas@alaska.gov">jason.sakalaskas@alaska.gov</a></p>

Northern Region Highways and Aviation Personal Services Information				
Authorized Positions			Personal Services Costs	
	<u>FY2021</u> <u>Management</u> <u>Plan</u>	<u>FY2022</u> <u>Governor</u>		
Full-time	250	249	Annual Salaries	20,054,730
Part-time	51	51	COLA	24,768
Nonpermanent	20	20	Premium Pay	2,020,974
			Annual Benefits	13,397,647
			<i>Less 4.95% Vacancy Factor</i>	(1,757,319)
			Lump Sum Premium Pay	0
<b>Totals</b>	<b>321</b>	<b>320</b>	<b>Total Personal Services</b>	<b>33,740,800</b>

Position Classification Summary					
Job Class Title	Anchorage	Fairbanks	Juneau	Others	Total
Accounting Technician I	0	1	0	0	1
Administrative Assistant I	0	2	0	3	5
Administrative Assistant II	0	1	0	0	1
Administrative Assistant III	0	3	0	4	7
Administrative Officer I	0	1	0	0	1
Administrative Officer II	0	1	0	0	1
E/Op Jrny III	0	2	0	48	50
E/Op Subjrym I	0	7	0	12	19
E/Op Subjrym II	0	9	0	8	17
Engineer/Architect II	0	1	0	0	1
Engineer/Architect III	0	1	0	0	1
Engineer/Architect IV	0	1	0	0	1
Engineering Assistant II	0	2	0	0	2
Engineering Associate	0	1	0	0	1
Env Imp Any III	0	1	0	0	1
Env Prgm Spcii	0	1	0	0	1
Environmental Impact Analyst I	0	1	0	0	1
Equipment Operator Foreman I	0	6	0	9	15
Equipment Operator Foreman II	0	1	0	3	4
Equipment Operator, Journey I	0	16	0	12	28
Equipment Operator, Journey II	0	27	0	107	134
Maint & OPS Spr	0	3	0	4	7
Mts/Bfc Frmn	0	1	0	0	1
Mts/EI Jrny II	0	1	0	2	3
Mts/Tces Frmn	0	1	0	0	1
Mts/Tces Jrnyii	0	2	0	0	2
Office Assistant III	0	0	0	3	3
Rural Airport Foreman	0	0	0	6	6
S&E Spt Spec	0	0	0	1	1
Safety Officer	0	1	0	0	1
Stock & Parts Services III	0	1	0	2	3
<b>Totals</b>	<b>0</b>	<b>96</b>	<b>0</b>	<b>224</b>	<b>320</b>

**Component Detail All Funds**  
**Department of Transportation/Public Facilities**

**Component:** Northern Region Highways and Aviation (2068)  
**RDU:** Highways, Aviation and Facilities (408)

Non-Formula Component

	FY2020 Actuals	FY2021 Conference Committee	FY2021 Authorized	FY2021 Management Plan	FY2022 Governor	FY2021 Management Plan vs FY2022 Governor	
71000 Personal Services	34,518.8	33,828.3	33,828.3	33,828.3	33,740.8	-87.5	-0.3%
72000 Travel	897.6	1,342.8	1,300.0	1,300.0	1,300.0	0.0	0.0%
73000 Services	19,021.8	18,948.3	18,948.3	18,948.3	20,016.5	1,068.2	5.6%
74000 Commodities	11,835.8	9,743.9	9,743.9	9,521.6	9,521.6	0.0	0.0%
75000 Capital Outlay	137.3	0.0	0.0	0.0	0.0	0.0	0.0%
77000 Grants, Benefits	0.0	0.0	0.0	0.0	0.0	0.0	0.0%
78000 Miscellaneous	0.0	0.0	0.0	0.0	0.0	0.0	0.0%
<b>Totals</b>	<b>66,411.3</b>	<b>63,863.3</b>	<b>63,820.5</b>	<b>63,598.2</b>	<b>64,578.9</b>	<b>980.7</b>	<b>1.5%</b>
<b>Fund Sources:</b>							
1001 CBR Fund (UGF)	0.0	8,554.2	8,554.2	8,554.2	0.0	-8,554.2	-100.0%
1002 Fed Rcpts (Fed)	3,395.8	122.4	122.4	122.4	4,902.4	4,780.0	3905.2%
1004 Gen Fund (UGF)	33,859.2	25,662.7	25,662.7	25,662.7	30,324.6	4,661.9	18.2%
1005 GF/Prgm (DGF)	298.1	401.6	401.5	401.5	401.5	0.0	0.0%
1007 I/A Rcpts (Other)	549.6	153.2	152.6	152.6	152.7	0.1	0.1%
1027 Int Airprt (Other)	0.0	52.2	52.2	52.2	52.2	0.0	0.0%
1061 CIP Rcpts (Other)	7,425.2	7,162.9	7,145.5	7,145.5	7,646.6	501.1	7.0%
1108 Stat Desig (Other)	20.3	63.6	63.6	63.6	63.6	0.0	0.0%
1200 VehRntlTax (DGF)	500.2	501.0	501.0	501.0	501.0	0.0	0.0%
1239 AvFuel Tax (Other)	2,407.1	2,447.0	2,437.3	2,437.3	2,295.8	-141.5	-5.8%
1244 Rural Air (Other)	848.9	1,399.3	1,384.3	1,162.0	1,162.0	0.0	0.0%
1249 Motor Fuel (DGF)	17,106.9	17,343.2	17,343.2	17,343.2	17,076.5	-266.7	-1.5%
<b>Unrestricted General (UGF)</b>	<b>33,859.2</b>	<b>34,216.9</b>	<b>34,216.9</b>	<b>34,216.9</b>	<b>30,324.6</b>	<b>-3,892.3</b>	<b>-11.4%</b>
<b>Designated General (DGF)</b>	<b>17,905.2</b>	<b>18,245.8</b>	<b>18,245.7</b>	<b>18,245.7</b>	<b>17,979.0</b>	<b>-266.7</b>	<b>-1.5%</b>
<b>Other Funds</b>	<b>11,251.1</b>	<b>11,278.2</b>	<b>11,235.5</b>	<b>11,013.2</b>	<b>11,372.9</b>	<b>359.7</b>	<b>3.3%</b>
<b>Federal Funds</b>	<b>3,395.8</b>	<b>122.4</b>	<b>122.4</b>	<b>122.4</b>	<b>4,902.4</b>	<b>4,780.0</b>	<b>3905.2%</b>
<b>Positions:</b>							
Permanent Full Time	249	250	250	250	249	-1	-0.4%
Permanent Part Time	53	51	51	51	51	0	0.0%
Non Permanent	20	20	20	20	20	0	0.0%

**Change Record Detail - Multiple Scenarios with Descriptions**  
**Department of Transportation/Public Facilities**

**Component:** Northern Region Highways and Aviation (2068)  
**RDU:** Highways, Aviation and Facilities (408)

Scenario/Change Record Title	Trans Type	Totals	Personal Services	Travel	Services	Commodities	Capital Outlay	Grants, Benefits	Miscellaneous	Positions		NP
										PFT	PPT	
***** Changes From FY2021 Conference Committee To FY2021 Authorized *****												
<b>Conference Committee</b>												
	ConfCom	63,863.3	33,828.3	1,342.8	18,948.3	9,743.9	0.0	0.0	0.0	250	51	20
1001 CBR Fund		8,554.2										
1002 Fed Rcpts		122.4										
1004 Gen Fund		25,662.7										
1005 GF/Prgm		401.6										
1007 I/A Rcpts		153.2										
1027 Int Airprt		52.2										
1061 CIP Rcpts		7,162.9										
1108 Stat Desig		63.6										
1200 VehRntlTax		501.0										
1239 AvFuel Tax		2,447.0										
1244 Rural Air		1,399.3										
1249 Motor Fuel		17,343.2										
<b>Eliminate Restoration of Non-UGF Travel Reductions from FY2020</b>												
	Veto	-42.8	0.0	-42.8	0.0	0.0	0.0	0.0	0.0	0	0	0
1005 GF/Prgm		-0.1										
1007 I/A Rcpts		-0.6										
1061 CIP Rcpts		-17.4										
1239 AvFuel Tax		-9.7										
1244 Rural Air		-15.0										
This is a legislative restoration of previous year vetoes. Due to the COVID-19 Travel Mandate, the Department will continue to manage with available funds.												
<b>Subtotal</b>		<b>63,820.5</b>	<b>33,828.3</b>	<b>1,300.0</b>	<b>18,948.3</b>	<b>9,743.9</b>	<b>0.0</b>	<b>0.0</b>	<b>0.0</b>	<b>250</b>	<b>51</b>	<b>20</b>
***** Changes From FY2021 Authorized To FY2021 Management Plan *****												
<b>Transfer to Central Region Highways &amp; Aviation for Receipt of After-Hours Call-Out, Fingerprinting &amp; Badging Receipts</b>												
	Trout	-63.9	0.0	0.0	0.0	-63.9	0.0	0.0	0.0	0	0	0
1244 Rural Air		-63.9										
The transfer of rural airport receipts will allow the component to appropriately receive and expend the revenue collected from fingerprinting, badging, and after-hours call-out operations at rural airports.												
Receipt authority previously restricted in Northern Region Highways and Aviation will be transferred.												
<b>Transfer to Southcoast Region Highways &amp; Aviation for Receipt of After-Hours Call-Out, Fingerprinting &amp; Badging Receipts</b>												
	Trout	-158.4	0.0	0.0	0.0	-158.4	0.0	0.0	0.0	0	0	0
1244 Rural Air		-158.4										

**Change Record Detail - Multiple Scenarios with Descriptions**  
**Department of Transportation/Public Facilities**

**Component:** Northern Region Highways and Aviation (2068)  
**RDU:** Highways, Aviation and Facilities (408)

Scenario/Change Record Title	Trans Type	Totals	Personal Services	Travel	Services	Commodities	Capital Outlay	Grants, Benefits	Miscellaneous	Positions		NP
										PFT	PPT	
<p>The transfer of rural airport receipts will allow the component to appropriately receive and expend the revenue collected from fingerprinting, badging, and after-hours call-out operations at rural airports.</p> <p>Receipt authority previously restricted in Northern Region Highways and Aviation will be transferred.</p>												
<b>Subtotal</b>		<b>63,598.2</b>	<b>33,828.3</b>	<b>1,300.0</b>	<b>18,948.3</b>	<b>9,521.6</b>	<b>0.0</b>	<b>0.0</b>	<b>0.0</b>	<b>250</b>	<b>51</b>	<b>20</b>

***** Changes From FY2021 Management Plan To FY2022 Governor *****												
<b>Fund Source Swap to Utilize Federal Aviation Administration CARES Act Funding and Displace Unrestricted General Fund</b>												
	OTI	0.0	0.0	0.0	0.0	0.0	0.0	0.0	0.0	0	0	0
1002 Fed Rcpts		4,638.5										
1004 Gen Fund		-4,638.5										

Approximately \$10 billion in grants for airports are available under the Coronavirus Aid, Relief, and Economic Security (CARES) Act, of which the State of Alaska Rural Airport System was allocated approximately \$49 million. Funds provided under the Grant Agreement must only be used for purposes directly related to airports. Such purposes can include the reimbursement of an airport's operational and maintenance expenses.

A one-time fund source swap of unrestricted general fund (1004) to federal receipt authority (1002) will allow the utilization of Federal Aviation Administration CARES Act revenue.

<b>One-time Use of FAA CARES Act Federal Funding to Cover Aviation Fuel Tax Shortfall</b>												
	OTI	0.0	0.0	0.0	0.0	0.0	0.0	0.0	0.0	0	0	0
1002 Fed Rcpts		141.5										
1239 AvFuel Tax		-141.5										

One-time use of Federal Aviation Administration CARES Act federal funding to cover aviation fuel tax shortfall.

Approximately \$10 billion in grants for airports are available under the Coronavirus Aid, Relief, and Economic Security (CARES) Act, of which the State of Alaska Rural Airport System was allocated approximately \$49 million. Funds provided under the Grant Agreement must only be used for purposes directly related to airports. Such purposes can include the reimbursement of an airport's operational and maintenance expenses.

Federal receipt authority is required to expend increased federal revenues related to CARES Act.

<b>Align Authority for Projected Motor Fuel Tax Shortfall</b>												
	OTI	0.0	0.0	0.0	0.0	0.0	0.0	0.0	0.0	0	0	0
1004 Gen Fund		269.5										
1249 Motor Fuel		-269.5										

Use unrestricted general fund receipt authority (1004) to cover projected motor fuel tax (1249) revenue shortfall.

The projected shortfall is based on pre-COVID revenue projections and the Department of Revenue's assumption that revenues will return to pre-COVID levels by



**Change Record Detail - Multiple Scenarios with Descriptions**  
**Department of Transportation/Public Facilities**

**Component:** Northern Region Highways and Aviation (2068)  
**RDU:** Highways, Aviation and Facilities (408)

Scenario/Change Record Title	Trans Type	Totals	Personal Services	Travel	Services	Commodities	Capital Outlay	Grants, Benefits	Miscellaneous	Positions		NP
										PFT	PPT	
FY2022. The department attributes a downward trend in motor fuel tax receipts to increased fuel efficiency in vehicles, increases in hybrid and electric vehicle ownership, and a reduction in driving overall.												
<b>FY2022 Salary Adjustments</b>												
	SalAdj	23.8	23.8	0.0	0.0	0.0	0.0	0.0	0.0	0	0	0
1004 Gen Fund		12.7										
1007 I/A Rcpts		0.1										
1061 CIP Rcpts		8.2										
1249 Motor Fuel		2.8										
FY2022 1% COLA for ASE/General Government (GG/GP/GY/GZ): \$23.8.												
<b>Add Authority to Cover Collective Bargaining Unit Increases for 37.5 to 40-hour Work Week</b>												
	Inc	464.0	0.0	0.0	464.0	0.0	0.0	0.0	0.0	0	0	0
1004 Gen Fund		464.0										
Add authority to cover the cost associated with the collective bargaining agreement increases for Labor, Trades, and Crafts and Supervisory union positions due to a change in the number of hours worked each week from 37.5 to 40. Salary adjustments were reflected in the FY2019 Governor Amended and FY2020 Governor's budget in the State Equipment Fleet component with no corresponding adjustment to the component's allocation to accommodate the increased cost.												
<b>Eliminate Vacant Maintenance Specialist - Electrician - Journey II/Lead (25-2144) Position</b>												
	Dec	0.0	0.0	0.0	0.0	0.0	0.0	0.0	0.0	-1	0	0
Eliminate Maintenance Specialist - Electrician - Journey II/Lead (25-2144) position, which has been vacant for over two years due to the reduced pay scale and benefit package when compared to private industry.												
The Northern Region (NR) operates 104 airports across the region, of which many have airport lighting systems. These lighting systems are reliable but do require annual maintenance, repairs, and component/system replacement. Within NR there are only two airport maintenance electricians dedicated to meet these maintenance needs. Many of the airports that NR maintains are the sole transportation mode to and from the community. Funding for the position will be transferred to the services line to allow for work to be contracted out.												
Position to be deleted:												
Full-time, Maintenance Specialist - Electrician - Journey II/Lead (25-2144), wage grade 51, Labor, Trades and Crafts, located in Fairbanks												
<b>Transfer from Human Resources to Fund Employee Based Rates - DOPLR/IRIS HRM</b>												
	Trin	185.6	0.0	0.0	185.6	0.0	0.0	0.0	0.0	0	0	0
1061 CIP Rcpts		185.6										
Transfer from Human Resources component to fund Division of Personnel and Labor Relations and Integrated Resource Information System Human Resource Management rates which have been incorporated into individual positions.												

**Change Record Detail - Multiple Scenarios with Descriptions**  
**Department of Transportation/Public Facilities**

**Component:** Northern Region Highways and Aviation (2068)  
**RDU:** Highways, Aviation and Facilities (408)

Scenario/Change Record Title	Trans Type	Totals	Personal Services	Travel	Services	Commodities	Capital Outlay	Grants, Benefits	Miscellaneous	Positions		NP
										PFT	PPT	
<b>Transfer from Information Systems and Services for Employee Based Rates Funding - OIT</b>												
1061 CIP Rcpts	Trin	307.3	0.0	0.0	307.3	0.0	0.0	0.0	0.0	0	0	0
Transfer from Information Systems and Services component to cover Office of Information Technology rates which have been incorporated into individual positions.												
<b>Fund Source Adjustment of CBRF to UGF</b>												
1001 CBR Fund	FndChg	0.0	0.0	0.0	0.0	0.0	0.0	0.0	0.0	0	0	0
1004 Gen Fund		-8,554.2										
		8,554.2										
Replace Constitutional Budget Reserve Fund (CBRF) used as a one-time funding mechanism in FY2021.												
<b>Transfer Authority for Contracted Rural Aviation Electrician Services</b>												
	LIT	0.0	-111.3	0.0	111.3	0.0	0.0	0.0	0.0	0	0	0
Transfer authority from the personal services to the services line to allow for contracted electrician services due to the elimination of Maintenance Specialist - Electrician - Journey II/Lead (25-2144) position, which has been vacant for over two years due to the reduced pay scale and benefit package when compared to private industry.												
<b>Totals</b>		<b>64,578.9</b>	<b>33,740.8</b>	<b>1,300.0</b>	<b>20,016.5</b>	<b>9,521.6</b>	<b>0.0</b>	<b>0.0</b>	<b>0.0</b>	<b>249</b>	<b>51</b>	<b>20</b>

**Line Item Detail (1676)**  
**Department of Transportation/Public Facilities**  
**Travel**

**Component:** Northern Region Highways and Aviation (2068)

Line Number	Line Name		FY2020 Actuals	FY2021 Management Plan	FY2022 Governor
2000	Travel		897.6	1,300.0	1,300.0
Object Class	Servicing Agency	Explanation	FY2020 Actuals	FY2021 Management Plan	FY2022 Governor
<b>2000 Travel Detail Totals</b>			<b>897.6</b>	<b>1,300.0</b>	<b>1,300.0</b>
2000	In-State Employee Travel	Transportation and per diem for maintenance personnel to perform maintenance activities including roadway striping, bridge repair, and major roadway repairs at locations off the contiguous highway system. Travel for personnel to support rural airport runway lighting repairs, airfield maintenance equipment repairs, and inspection of contractor performance and compliance with plans, codes and regulations, such as Stormwater Pollution Prevention Plans. This travel is primarily by air and, in the case of rural airports, air taxi and charter services are necessary. This includes the Dalton Highway maintenance program requiring round trip travel every two weeks for employees at Deadhorse and Barrow and an aircraft charter contract for 11 employees at Chandalar. Per diem is paid for highway and airport crews traveling to outlying villages or working away from their assigned duty station. Includes special crews for traffic striping, asphalt patching, bridge repairs, washouts, or avalanche cleanup. Deadhorse Airport extended	886.5	1,289.0	1,289.0

**Line Item Detail (1676)**  
**Department of Transportation/Public Facilities**  
**Travel**

**Component:** Northern Region Highways and Aviation (2068)

Object Class	Servicing Agency	Explanation	FY2020 Actuals	FY2021 Management Plan	FY2022 Governor
<b>2000 Travel Detail Totals</b>			<b>897.6</b>	<b>1,300.0</b>	<b>1,300.0</b>
		operations increment; \$90.0 GF, \$90.0 GF/PR			
		Travel and per diem for the director and other administrative staff members for highway, airport and facility inspections, and administration and management of the agency. This includes funding for indirect travel costs in support of capital projects (ICAP).			
		Travel for training sessions on airport safety and security, airport rescue and firefighting (ARFF), avalanche control and administration of Federal Highway Administration, and Federal Aviation Administration projects. This includes funding for training costs in support of capital projects (ICAP).			
2001	In-State Non-Employee Travel	In-state non-employee travel.	0.1	0.0	0.0
2002	Out of State Employee Travel	Travel to out of state meetings for the director, maintenance engineer, regional maintenance manager and other managers where training or sessions are not held in Alaska.	9.4	9.0	9.0
2005	Moving Costs	Moving costs for newly hired or transferred employees.	1.6	2.0	2.0

**Line Item Detail (1676)**  
**Department of Transportation/Public Facilities**  
**Services**

**Component:** Northern Region Highways and Aviation (2068)

Line Number	Line Name		FY2020 Actuals	FY2021 Management Plan	FY2022 Governor
3000	Services		19,021.8	18,948.3	20,016.5
Object Class	Servicing Agency	Explanation	FY2020 Actuals	FY2021 Management Plan	FY2022 Governor
<b>3000 Services Detail Totals</b>			<b>19,021.8</b>	<b>18,948.3</b>	<b>20,016.5</b>
3000	Education Services	Registration and tuition fees for training in maintenance management, hazardous waste management, snow and ice control, bridge rehabilitation, and other specialized maintenance services.	81.0	57.0	57.0
3001	Financial Services	Insurance costs for rural airport maintenance contracts.	105.6	118.4	118.4
3003	Information Technology	Software licensing and software maintenance.	27.2	18.3	18.3
3004	Telecommunications	Long distance, local phone service, cellular service and satellite phones provided by vendors.	793.3	229.7	229.7
3005	Health Services	Drug and alcohol testing for employees with commercial driver's licenses.	58.4	35.0	35.0
3006	Delivery Services	Delivery services.	185.1	102.5	102.5
3007	Advertising and Promotions	Public notices for weight restrictions, studded tires and road closures.	3.0	2.5	2.5
3008	Utilities	Electrical energy for street lights, signal systems, pre-heating of airport maintenance equipment to allow starting during extreme cold, railroad crossing signals and airfield lighting systems.	1,436.0	1,179.6	1,179.6
3008	Utilities	Water for street sweepers.	9.2	9.7	9.7
3008	Utilities	Garbage dump costs for litter and	148.9	88.4	88.4

**Line Item Detail (1676)**  
**Department of Transportation/Public Facilities**  
**Services**

**Component:** Northern Region Highways and Aviation (2068)

Object Class	Servicing Agency	Explanation	FY2020 Actuals	FY2021 Management Plan	FY2022 Governor
<b>3000 Services Detail Totals</b>			<b>19,021.8</b>	<b>18,948.3</b>	<b>20,016.5</b>
		trash cleanup of roads, waysides, and facilities.			
3008	Utilities	Propane.	7.4	3.0	3.0
3009	Structure/Infrastructure/Land	Inspections/Testing-Sample testing of crushed material and soil.	8.0	15.0	15.0
3009	Structure/Infrastructure/Land	Contracts for maintenance and upgrades for electrical, guardrail, bike paths, brush cutting, waysides/pullouts, Alaska Railroad crossings, striping; gravel crushing, and supplemental snow removal or grading, including services contracted with the private sector and maintenance agreements with local governments. Snow removal contracts at rural airports. Includes \$50.0 GF for Northwest Alaska Ice Roads.	2,762.3	3,876.8	3,894.6
		FY19 Close 11 Non-Obligated Rural Airports \$-114.6			
3009	Structure/Infrastructure/Land	Rental for land, buildings and space: lease fees for Bureau of Land Management or Native corporation property at small airports, railroad crossings and other small land leases. Room rental for hazardous materials and safety training.	10.5	10.0	10.0
3010	Equipment/Machinery	Repairs and maintenance of machinery and equipment other than that paid to State Equipment Fleet such as backhoes, bridge repair equipment, survey and gravel screening equipment, generators, welders, drill presses, pumps, chain	111.7	266.9	266.9

**Line Item Detail (1676)**  
**Department of Transportation/Public Facilities**  
**Services**

**Component:** Northern Region Highways and Aviation (2068)

Object Class	Servicing Agency	Explanation	FY2020 Actuals	FY2021 Management Plan	FY2022 Governor
<b>3000 Services Detail Totals</b>			<b>19,021.8</b>	<b>18,948.3</b>	<b>20,016.5</b>
3010	Equipment/Machinery	saws, and chain hoists. Includes rental of copiers and office machines.  Rental or leases for specialized tools, machinery and equipment not available from State Equipment Fleet such as backhoes, bridge repair equipment, survey and gravel screening equipment. Rental of extra equipment such as snow blowers, loaders and graders during emergencies or heavy storms.	244.1	609.5	609.5
3011	Other Services	Agreement with City of Fairbanks for National Pollutant Discharge Elimination System (NPDES) permit for Municipal Separate Storm Sewer System (MS4) technical support including surveying, plan development, mapping, etc. Also miscellaneous consultants for this program. Specification and safety manual printing; photo processing, environmental assessments and cleanup.	161.9	403.5	403.5
3011	Other Services	Contracted services to have law enforcement officers (LEO) stationed at rural airports during screening operations.	60.0	60.0	60.0
3011	Other Services	Restricted expenditure authority due to unrealizable motor and aviation fuel tax collections.	0.0	63.4	63.4
3012	Inter-Agency Federal Indirect Rate Allocation	Indirect rate allocation expenses intended for projects that have been closed.	0.5	0.0	0.0
3015	Inter-Agency	FishGm - Department-wide Reimbursable Service Agreement for	0.1	0.0	0.0

**Line Item Detail (1676)**  
**Department of Transportation/Public Facilities**  
**Services**

**Component:** Northern Region Highways and Aviation (2068)

Object Class	Servicing Agency	Explanation	FY2020 Actuals	FY2021 Management Plan	FY2022 Governor
<b>3000 Services Detail Totals</b>			<b>19,021.8</b>	<b>18,948.3</b>	<b>20,016.5</b>
	Conservation/Environmental	project review consulting.			
3015	Inter-Agency Conservation/Environmental	NatRes - Department-wide Annual water usage permits paid to Department of Natural Resources.	2.8	5.2	5.2
3015	Inter-Agency Conservation/Environmental	Trans - Northern Design & Eng Svcs (2299) Technical services including right of way, materials and design services.	0.0	60.0	60.0
3015	Inter-Agency Conservation/Environmental	EnvCon - Department-wide Stormwater permit fees paid to Department of Environmental Conservation.	4.4	4.0	4.0
3015	Inter-Agency Conservation/Environmental	NatRes - Department-wide Reimbursable services agreement with Department of Natural Resources for maintenance of the Birch Lake Wayside.	9.0	8.3	8.3
3017	Inter-Agency Information Technology Non-Telecommunications	Admin - Department-wide Computer services provided by Department of Administration such as central server, data storage, printing, network services, open connect and task order system.	152.0	58.5	152.0
3018	Inter-Agency Information Technology Telecommunications	Admin - Department-wide Telecommunications services provided by the Department of Administration such as basic telephone services, equipment and features, dedicated voice/data line service, statewide paging, two-way radio, and video conferencing.	55.3	182.5	489.8
3020	Inter-Agency Building Maintenance	Trans - Northern Region Facilities (2069) Reimbursable services agreement's with Northern Region Facilities where Highways and Aviation employees are either not available or need expertise in electrical or other facilities.	0.0	26.2	26.2
3021	Inter-Agency Mail	Admin - Department-wide Chargeback fees for central mail services such as mailing vendor payments and payroll warrants.	1.9	2.7	2.7



**Line Item Detail (1676)**  
**Department of Transportation/Public Facilities**  
**Services**

**Component:** Northern Region Highways and Aviation (2068)

Object Class		Servicing Agency	Explanation	FY2020 Actuals	FY2021 Management Plan	FY2022 Governor
<b>3000 Services Detail Totals</b>				<b>19,021.8</b>	<b>18,948.3</b>	<b>20,016.5</b>
3022	Inter-Agency Human Resources	Admin - Department-wide	Chargeback fees for human resource services such as labor relations, position classifications and payroll processing.	0.0	6.4	192.0
3024	Inter-Agency Legal	Law - Department-wide	Legal services provided by the Department of Law with added litigations in settling disputes with private and corporate landowners/lessees where gravel stockpiles are in contention and with land ownership issues with native allotments.	11.1	130.0	130.0
3026	Inter-Agency Insurance	Admin - Department-wide	Liability insurance for rural airport facilities.	93.7	110.2	110.2
3027	Inter-Agency Financial	Admin - Department-wide	Chargeback fees for AKPAY/IRIS/ALDER.	115.1	2.5	2.5
3028	Inter-Agency Americans with Disabilities Act Compliance	Admin - Department-wide	Chargeback fees for the statewide coordinator for the Americans with Disabilities Act (ADA).	2.2	0.7	0.7
3035	Inter-Agency Other Equipment/Machinery	Trans - State Equipment Fleet (2791)	State Equipment Fleet employees working as equipment operators.	147.0	144.1	144.1
3037	State Equipment Fleet	Trans - State Equipment Fleet (2791)	Operating and replacement fees paid to State Equipment Fleet (SEF) for over 1,300 vehicles/equipment. Includes credit/reduction for usage on federal projects. Also includes repair costs of X class vehicles. FY16 Deadhorse Airport extended operations increment; \$16.1 GF, \$16.2 GF/PR FY16 reduction to remove funding for Hwy & A/P Surface Maintenance \$-350.0; FY16 reduction to reduce fleet \$-566.7; FY16 Service level reductions \$-1,277.1; FY16 Cost	16,649.3	10,946.9	11,410.9

**Line Item Detail (1676)**  
**Department of Transportation/Public Facilities**  
**Services**

**Component:** Northern Region Highways and Aviation (2068)

Object Class	Servicing Agency	Explanation	FY2020 Actuals	FY2021 Management Plan	FY2022 Governor
<b>3000 Services Detail Totals</b>			<b>19,021.8</b>	<b>18,948.3</b>	<b>20,016.5</b>
		Control & Efficiency Measures \$-340.0 FY17 Service Level Reduction \$-944.1 FY17 GF Program Receipts to Mitigate GF Reduction in FY16 \$-235.9			
3037	State Equipment Fleet	Trans - State Equipment Fleet (2791) SEF Fuel A87 Allowed Credit card vehicle fuel purchases through State Equipment Fleet. Funding based on 20,733 gallons @ \$4.86 = \$100.7. Deadhorse Airport extended operations increment; \$16.6 GF, \$16.6 GF/PR FY2016 Cost Control & Efficiency Measures \$-23.0.	80.4	110.9	110.9
3038	Inter-Agency Management/Consulting	Design support.	25.7	0.0	0.0
3038	Inter-Agency Management/Consulting	Gov - Department-wide Office of Management and Budget - Budget Analyst support.	3.7	0.0	0.0
3038	Inter-Agency Management/Consulting	Trans - Northern Construction & CIP (2295) Snow plow support.	25.0	0.0	0.0
3039	DOT/PF Time & Equipment System		-4,571.0	0.0	0.0

**Line Item Detail (1676)**  
**Department of Transportation/Public Facilities**  
**Commodities**

**Component:** Northern Region Highways and Aviation (2068)

Line Number	Line Name		FY2020 Actuals	FY2021 Management Plan	FY2022 Governor
4000	Commodities		11,835.8	9,521.6	9,521.6
Object Class	Servicing Agency	Explanation	FY2020 Actuals	FY2021 Management Plan	FY2022 Governor
<b>4000 Commodities Detail Totals</b>			<b>11,835.8</b>	<b>9,521.6</b>	<b>9,521.6</b>
4000	Business	General office supplies, office furniture, subscriptions, computers and other information technology equipment.	135.6	132.2	132.2
4001	Agricultural	Seed, fertilizer, and herbicide to establish, maintain, and control ground cover at state airports and along state highways.	2.8	10.6	10.6
4002	Household/Institutional	Protective clothing and supplies such as gloves, hip boots, hard hats, safety vests and shoes, safety glasses and coveralls. Also includes absorbent towels, solvent, cleaners, floor sweep, barrels for used oil and hazardous waste storage, trash cans and other janitorial and cleaning supplies.	23.7	76.4	76.4
4004	Safety	Firearms and ammunition used in avalanche and bird control. Fire suppressant chemicals for airport firefighting and rescue vehicles. Other safety and first aid supplies.	184.7	85.0	85.0
4005	Building Materials	Lumber, structural repairs and fencing materials.	9.1	129.8	129.8
4006	Signs and Markers	Signs and markers along roadways and airports.	157.8	118.8	118.8
FY17 Reduce commodities \$-400.0					

**Line Item Detail (1676)**  
**Department of Transportation/Public Facilities**  
**Commodities**

**Component:** Northern Region Highways and Aviation (2068)

Object Class	Servicing Agency	Explanation	FY2020 Actuals	FY2021 Management Plan	FY2022 Governor
<b>4000 Commodities Detail Totals</b>			<b>11,835.8</b>	<b>9,521.6</b>	<b>9,521.6</b>
4007	Asphalt	Asphalt, cold mix and hot mix for pavement repairs.	1,552.8	723.0	723.0
4008	Aggregate	FY2016 reduction (\$200.0) Aggregate compounds such as gravel or slag used to form concrete or pavement.	28.8	495.0	495.0
4009	Guardrails	FY16 reduction \$-257.7; FY16 Service level reduction & efficiencies \$-253.3 Guardrail, posts, and bridge planks.	73.4	189.1	189.1
4010	Culverts	FY16 Services level reduction & efficiencies \$-450.0 FY17 Service level reduction \$-75.0 Culverts.	6.9	44.3	44.3
4011	Electrical	FY16 Service Level reduction & efficiencies \$-56.0 FY17 Reduce Commodities \$-100.0 Electrical parts for repairing signals.	193.0	159.2	159.2
4012	Plumbing	Parts and supplies for plumbing repairs.	9.5	25.9	25.9
4013	Lube Oils/Grease/Solvents	Lube oil, grease and fuel additives.	131.6	19.3	19.3
4014	Bottled Gas	Bottled gas.	32.7	27.4	27.4
4015	Parts and Supplies	Parts and supplies for leased or other equipment not serviced by State Equipment Fleet.	932.3	644.6	644.6
4015	Parts and Supplies	Blades, cutting edges, chains and cross-links. FY16 reduction \$-195.0 FY2016 unallocated reduction \$-70.0	1,113.0	567.9	567.9

**Line Item Detail (1676)**  
**Department of Transportation/Public Facilities**  
**Commodities**

**Component:** Northern Region Highways and Aviation (2068)

Object Class	Servicing Agency	Explanation	FY2020 Actuals	FY2021 Management Plan	FY2022 Governor
<b>4000 Commodities Detail Totals</b>			<b>11,835.8</b>	<b>9,521.6</b>	<b>9,521.6</b>
		FY17 Service level reduction \$-25.0			
4016	Paint/Preservatives	Traffic paint, beads and solvent for striping highways, airports and crosswalks.	1,752.9	241.1	241.1
		FY2016 reduction (\$400.0) FY17 reduction \$-233.6			
4017	Sand	Sand used with chemicals for ice control on roadway surfaces.	232.2	235.7	235.7
4018	Surface Chemicals	Winter chemicals for highways and airport ice control. Summer chemicals for dust control on airports and highways.	1,236.9	1,610.1	1,610.1
4019	Small Tools/Minor Equipment	Small tools and minor equipment such as air wrenches and water pumps.	244.6	152.5	152.5
4020	Equipment Fuel	Diesel fuel and unleaded gasoline purchased in bulk for equipment and vehicle usage. Funding based on 1,476,553 gallons @ \$2.82. See object class 3037 for fuel purchased by credit card.	3,781.5	3,833.7	3,833.7
		FY16 Amendment; transfer \$-374.1 Southcoast Region, FY16 Service level reduction & efficiencies \$-100.0, FY16 Cost control and efficiency measures \$-42.0			
		FY17 Service level reduction \$-26.2			

**Line Item Detail (1676)**  
**Department of Transportation/Public Facilities**  
**Capital Outlay**

**Component:** Northern Region Highways and Aviation (2068)

Line Number	Line Name		FY2020 Actuals	FY2021 Management Plan	FY2022 Governor
5000	Capital Outlay		137.3	0.0	0.0
Object Class	Servicing Agency	Explanation	FY2020 Actuals	FY2021 Management Plan	FY2022 Governor
<b>5000 Capital Outlay Detail Totals</b>			<b>137.3</b>	<b>0.0</b>	<b>0.0</b>
5002	Structures and Infrastructure	Contractor services for performing maintenance and operations services.	55.2	0.0	0.0
5004	Equipment	Boom Mower	82.1	0.0	0.0

**Revenue Detail (1681)**  
**Department of Transportation/Public Facilities**

**Component:** Northern Region Highways and Aviation (2068)

Revenue Type (OMB Fund Code) Revenue Source	Component	Comment	FY2020 Actuals	FY2021 Management Plan	FY2022 Governor
<b>5002 Fed Rcpts (1002 Fed Rcpts)</b>			<b>3,395.8</b>	<b>122.4</b>	<b>4,902.4</b>
5017 Federal Transportation - Miscellaneous Grants		Reimbursement for requests from the Federal Aviation Administration, Bureau of Land Management and other federal agencies for snow removal at their sites on Northern Region airports and campgrounds on federal land and special emergency requests from federal agencies, i.e. U.S. Air Force.	0.0	122.4	122.4
5019 Federal - Miscellaneous Grants		Federal receipt authority to allow use of Federal Aviation Administration CARES Act funding.	3,395.8	0.0	4,780.0
<b>5005 GF/Prgm (1005 GF/Prgm)</b>			<b>298.1</b>	<b>401.5</b>	<b>401.5</b>
5106 Program Receipts Charges for Services - Rent and Royalties		Security Screening and Fingerprinting Fees and Damages Recovered.	0.0	34.1	34.1
5111 Program Receipts Transportation - Charges for Services		Receipts collected for repair activities on non-state signal controllers, traffic striping on city streets, travelers assistance on remote roadways, sale of scrap metal, etc. Reimbursement is based on actual cost of service. See AS 37.05.146(a) for the definition of general fund program receipts.	291.8	330.9	330.9
5111 Program Receipts Transportation - Charges for Services		Miscellaneous receipts collected for fees of services such as roadside assistance and scrap metal.	6.3	36.5	36.5
<b>5007 I/A Rcpts (1007 I/A Rcpts)</b>			<b>549.6</b>	<b>152.6</b>	<b>152.7</b>
5301 Inter-Agency Receipts	Admin - Department-wide	Reimbursable service agreement to provide snow plowing at Office of Information Technology Communication sites.	1.6	10.0	10.0

**Revenue Detail (1681)**  
**Department of Transportation/Public Facilities**

**Component:** Northern Region Highways and Aviation (2068)

Revenue Type (OMB Fund Code) Revenue Source	Component	Comment	FY2020 Actuals	FY2021 Management Plan	FY2022 Governor
5301 Inter-Agency Receipts	NatRes - Department-wide	Reimbursable service agreement for roadway fire support.	63.2	0.0	0.0
5301 Inter-Agency Receipts	Univ - Department-wide	Reimbursable Service Agreement for striping activities.	18.4	0.0	0.0
5301 Inter-Agency Receipts	FishGm - Department-wide	Reimbursable service agreement for maintenance in the Chitina area.	73.4	10.0	10.0
5301 Inter-Agency Receipts	Trans - Facilities Services (3195)	Reimbursable services agreement for Highways and Aviation staff to provide assistance in building maintenance duties when Northern Region facilities does not have adequate staff available, including electrical and other maintenance work at the Deadhorse Combined facility.	0.0	80.0	80.0
5301 Inter-Agency Receipts	Trans - Northern Highways & Aviation (2068)	Reimbursement from other state agencies operating budgets for services upon request.	393.0	52.6	52.7
<b>5061 CIP Rcpts (1061 CIP Rcpts)</b>			<b>7,425.2</b>	<b>7,145.5</b>	<b>7,646.6</b>
5351 Capital Improvement Project Inter-Agency		Capital improvement project receipts for work in direct support of capital projects.	6,816.2	6,398.6	6,403.3
5351 Capital Improvement Project Inter-Agency		Recovery of indirect costs from the capital budget via the department's Indirect Cost Allocation Plan (ICAP).	609.0	746.9	1,243.3
<b>5108 Stat Desig (1108 Stat Desig)</b>			<b>20.3</b>	<b>63.6</b>	<b>63.6</b>
5206 Statutory Designated Program Receipts - Contracts		Reimbursement from non-state and non-federal entities under contractual agreements requesting Department of Transportation and Public Facilities to provide maintenance services such as after-hours airport call out and plowing open roads during winter	20.3	63.6	63.6



**Revenue Detail (1681)**  
**Department of Transportation/Public Facilities**

**Component:** Northern Region Highways and Aviation (2068)

Revenue Type (OMB Fund Code) Revenue Source	Component	Comment	FY2020 Actuals	FY2021 Management Plan	FY2022 Governor
		months. Also includes roadway/roadside sweeping for community events. Reimbursement is based on actual costs.			
<b>5244 AirptLease (1244 Rural Air)</b>			<b>848.9</b>	<b>1,162.0</b>	<b>1,162.0</b>
5244 Rural Airport Lease Receipts		Revenue distributed from the department's rural airport leasing program operated by the Statewide Aviation component under various sections of the Alaska Aeronautic Act including AS 02.15.090 and Title 17 of the Alaska Administrative Code. AS 37.05.146(c)(68) defines charges, rentals, and fees for airport or air navigation facility contracts, leases and other arrangements as non-general fund program receipts.	819.0	923.6	923.6
5244 Rural Airport Lease Receipts		Revenue collected from air carriers for airport after hour call outs.	29.9	100.0	100.0
5244 Rural Airport Lease Receipts		Revenue collected for security screening and fingerprinting activities.	0.0	75.0	75.0
5244 Rural Airport Lease Receipts		Restricted revenue authority for unrealized receipts at Deadhorse airport.	0.0	63.4	63.4
<b>6004 Gen Fund (1004 Gen Fund)</b>			<b>0.4</b>	<b>0.0</b>	<b>0.0</b>
6046 General Fund - Prior Year Reimbursement Recovery		Credits from vendors for returned commodities.	0.4	0.0	0.0

**Inter-Agency Services (1682)**  
**Department of Transportation/Public Facilities**

**Component:** Northern Region Highways and Aviation (2068)

	FY2020 Actuals	FY2021 Management Plan	FY2022 Governor
<b>Component Totals</b>	<b>17,353.0</b>	<b>11,799.1</b>	<b>12,849.5</b>
With Department of Fish and Game	0.1	0.0	0.0
With Department of Natural Resources	11.8	13.5	13.5
With Department of Transportation/Public Facilities	16,901.7	11,288.1	11,752.1
With Department of Environmental Conservation	4.4	4.0	4.0
With Department of Administration	420.2	363.5	949.9
With Department of Law	11.1	130.0	130.0
With Office of the Governor	3.7	0.0	0.0

Object Class	Servicing Agency	Explanation	FY2020 Actuals	FY2021 Management Plan	FY2022 Governor
3015 Inter-Agency Conservation/Environmental	FishGm - Department-wide	Reimbursable Service Agreement for project review consulting.	0.1	0.0	0.0
3015 Inter-Agency Conservation/Environmental	NatRes - Department-wide	Annual water usage permits paid to Department of Natural Resources.	2.8	5.2	5.2
3015 Inter-Agency Conservation/Environmental	Trans - Northern Design & Eng Svcs (2299)	Technical services including right of way, materials and design services.	0.0	60.0	60.0
3015 Inter-Agency Conservation/Environmental	EnvCon - Department-wide	Stormwater permit fees paid to Department of Environmental Conservation.	4.4	4.0	4.0
3015 Inter-Agency Conservation/Environmental	NatRes - Department-wide	Reimbursable services agreement with Department of Natural Resources for maintenance of the Birch Lake Wayside.	9.0	8.3	8.3
3017 Inter-Agency Information Technology Non-Telecommunications	Admin - Department-wide	Computer services provided by Department of Administration such as central server, data storage, printing, network services, open connect and task order system.	152.0	58.5	152.0
3018 Inter-Agency Information Technology Telecommunications	Admin - Department-wide	Telecommunications services provided by the Department of Administration such as basic	55.3	182.5	489.8

**Inter-Agency Services (1682)**  
**Department of Transportation/Public Facilities**

**Component:** Northern Region Highways and Aviation (2068)

Object Class	Servicing Agency	Explanation	FY2020 Actuals	FY2021 Management Plan	FY2022 Governor
3020	Inter-Agency Building Maintenance	Trans - Northern Region Facilities (2069)			
		telephone services, equipment and features, dedicated voice/data line service, statewide paging, two-way radio, and video conferencing.			
		Reimbursable services agreement's with Northern Region Facilities where Highways and Aviation employees are either not available or need expertise in electrical or other facilities.	0.0	26.2	26.2
3021	Inter-Agency Mail	Admin - Department-wide			
		Chargeback fees for central mail services such as mailing vendor payments and payroll warrants.	1.9	2.7	2.7
3022	Inter-Agency Human Resources	Admin - Department-wide			
		Chargeback fees for human resource services such as labor relations, position classifications and payroll processing.	0.0	6.4	192.0
3024	Inter-Agency Legal	Law - Department-wide			
		Legal services provided by the Department of Law with added litigations in settling disputes with private and corporate landowners/lessees where gravel stockpiles are in contention and with land ownership issues with native allotments.	11.1	130.0	130.0
3026	Inter-Agency Insurance	Admin - Department-wide			
		Liability insurance for rural airport facilities.	93.7	110.2	110.2
3027	Inter-Agency Financial	Admin - Department-wide			
		Chargeback fees for AKPAY/IRIS/ALDER.	115.1	2.5	2.5
3028	Inter-Agency Americans with Disabilities Act Compliance	Admin - Department-wide			
		Chargeback fees for the statewide coordinator for the Americans with Disabilities Act (ADA).	2.2	0.7	0.7
3035	Inter-Agency Other Equipment/Machinery	Trans - State Equipment Fleet (2791)			
		State Equipment Fleet employees working as equipment operators.	147.0	144.1	144.1
3037	State Equipment Fleet	Trans - State Equipment Fleet (2791)			
		Operating and replacement fees paid to State Equipment Fleet (SEF) for	16,649.3	10,946.9	11,410.9

**Inter-Agency Services (1682)**  
**Department of Transportation/Public Facilities**

**Component:** Northern Region Highways and Aviation (2068)

Object Class	Servicing Agency	Explanation	FY2020 Actuals	FY2021 Management Plan	FY2022 Governor	
		over 1,300 vehicles/equipment. Includes credit/reduction for usage on federal projects. Also includes repair costs of X class vehicles. FY16 Deadhorse Airport extended operations increment; \$16.1 GF, \$16.2 GF/PR FY16 reduction to remove funding for Hwy & A/P Surface Maintenance \$-350.0; FY16 reduction to reduce fleet \$-566.7; FY16 Service level reductions \$-1,277.1; FY16 Cost Control & Efficiency Measures \$-340.0 FY17 Service Level Reduction \$-944.1 FY17 GF Program Receipts to Mitigate GF Reduction in FY16 \$-235.9				
3037	State Equipment Fleet	Trans - State Equipment Fleet (2791)	SEF Fuel A87 Allowed Credit card vehicle fuel purchases through State Equipment Fleet. Funding based on 20,733 gallons @ \$4.86 = \$100.7. Deadhorse Airport extended operations increment; \$16.6 GF, \$16.6 GF/PR FY2016 Cost Control & Efficiency Measures \$-23.0.	80.4	110.9	110.9
3038	Inter-Agency Management/Consulting	Gov - Department-wide	Office of Management and Budget - Budget Analyst support.	3.7	0.0	0.0
3038	Inter-Agency Management/Consulting	Trans - Northern Construction & CIP (2295)	Snow plow support.	25.0	0.0	0.0

**Personal Services Expenditure Detail**  
**Department of Transportation/Public Facilities**

**Scenario:** FY2022 Governor (17280)  
**Component:** Northern Region Highways and Aviation (2068)  
**RDU:** Highways, Aviation and Facilities (408)

PCN	Job Class Title	Time Status	Retire Code	Barg Unit	Location	Salary Sched	Range / Step	Comp Months	Split / Count	Annual Salaries	COLA	Premium Pay	Annual Benefits	Total Costs	UGF Amount
25-0163	Engineer/Architect II	FT	A	GP	Fairbanks	203	23E / F	12.0		100,097	1,476	7,581	58,674	167,828	0
25-1170	Rural Airport Foreman	FT	A	LL	Cordova	2EE	49P	12.0		98,095	0	7,075	57,641	162,811	128,490
25-1171	Equipment Operator, Journey II	PT	A	LL	Thompson Pass	2FF	53A / B	8.0		36,566	0	2,920	27,083	66,569	31,813
25-1173	Equipment Operator, Journey II	FT	A	LL	Cordova	2EE	53P	12.0		79,378	0	5,725	50,208	135,311	122,605
25-1175	E/Op Jrny III	FT	A	LL	Cordova	2EE	52D / E	12.0		63,220	0	4,486	43,765	111,471	100,324
25-1176	E/Op Jrny III	FT	A	LL	Cordova	2EE	52O	12.0		81,791	0	5,899	51,167	138,857	124,971
25-1178	Equipment Operator Foreman I	FT	A	LL	Saint Marys	2II	51J / K	12.0		77,308	0	5,508	49,361	132,177	0
25-1181	Equipment Operator, Journey II	FT	A	LL	Saint Marys	2II	53B / C	12.0		59,485	0	4,231	42,287	106,003	0
25-1225	Stock & Parts Services III	FT	A	LL	Fairbanks	2EE	54M / N	12.0		68,523	0	971	44,427	113,921	25,749
25-1241	Administrative Officer I	FT	A	GP	Fairbanks	203	17D / E	12.0		65,156	893	0	42,924	108,973	101,276
25-1253	Stock & Parts Services III	FT	A	LL	Nome	2II	54O	12.0		76,113	0	4,117	48,403	128,633	25,727
25-1260	Stock & Parts Services III	PT	A	LL	Valdez	2FF	54M	10.5		59,776	0	3,695	39,860	103,331	20,666
25-1458	Equipment Operator, Journey II	FT	A	LL	Fairbanks	2EE	53O	12.0		76,654	0	5,529	49,127	131,310	77,099
25-1472	Equipment Operator, Journey II	FT	A	LL	Saint Marys	2II	53F	11.5		63,436	0	4,774	43,173	111,383	0
25-1476	Engineering Associate	FT	A	GP	Fairbanks	203	21M	12.0		105,476	1,557	8,113	60,864	176,010	0
25-1562	Equipment Operator, Journey I	FT	A	LL	Fairbanks	2EE	54D / E	12.0		55,771	0	3,969	40,814	100,554	19,734
25-1574	Env Prgm Spcii	FT	A	GP	Fairbanks	203	18L / M	12.0		85,438	1,171	0	50,437	137,046	0
25-1583	Mts/EI Jrny II	FT	A	LL	Fairbanks	2EE	51F / J	12.0		71,917	0	5,046	47,193	124,156	0
25-1613	Equipment Operator, Journey II	FT	A	LL	Valdez	2FF	53B / C	12.0		56,607	0	4,018	41,142	101,767	35,619
25-1670	Equipment Operator, Journey II	FT	A	LL	Fairbanks	2EE	53N	12.0		74,034	0	5,340	48,086	127,460	6,373
25-1671	E/Op Jrny III	FT	A	LL	Nome	2II	52E / F	12.0		68,523	0	4,917	45,888	119,328	11,933
25-1681	E/Op Subjrny II	FT	A	LL	Fairbanks	2EE	56J / K	12.0		55,959	0	7,854	42,323	106,136	31,841
25-1706	E/Op Subjrny I	PT	A	LL	Cantwell	2HH	58B / C	6.0		22,935	0	2,415	18,733	44,083	0
25-1734	Env Imp Any III	FT	A	GP	Fairbanks	203	19E / F	12.0		77,279	1,138	5,787	49,558	133,762	0
25-1783	Office Assistant III	FT	A	GP	Nome	237	11A / B	12.0		52,299	744	1,974	38,893	93,910	93,910
25-1788	Engineering Assistant II	FT	A	GG	Fairbanks	203	19L / M	12.0		90,278	1,331	6,862	54,771	153,242	0
25-1818	Engineering Assistant II	FT	A	GP	Fairbanks	203	19B / C	12.0		70,037	1,032	5,236	46,671	122,976	0
25-1831	E/Op Subjrny I	PT	A	LL	Tazlina	2FF	58B / C	8.0		28,976	0	2,315	24,048	55,339	28,469
25-1901	Maint & OPS Spr	FT	A	SS	Tok	200	21D / E	12.0		87,614	0	0	51,283	138,897	41,669
25-1902	Maint & OPS Spr	FT	A	SS	Fairbanks	203	21E / F	12.0		94,203	0	0	53,723	147,926	44,378

Note: If a position is split, an asterisk (\*) will appear in the Split/Count column. If the split position is also counted in the component, two asterisks (\*\*) will appear in this column. [No valid job title] appearing in the Job Class Title indicates that the PCN has an invalid class code or invalid range for the class code effective date of this scenario.

**Personal Services Expenditure Detail**  
**Department of Transportation/Public Facilities**

**Scenario:** FY2022 Governor (17280)  
**Component:** Northern Region Highways and Aviation (2068)  
**RDU:** Highways, Aviation and Facilities (408)

PCN	Job Class Title	Time Status	Retire Code	Barg Unit	Location	Salary Sched	Range / Step	Comp Months	Split / Count	Annual Salaries	COLA	Premium Pay	Annual Benefits	Total Costs	UGF Amount
25-1903	Maint & OPS Spr	FT	A	SS	Fairbanks	203	21Q	12.0		126,365	0	0	65,636	192,001	96,001
25-1904	Administrative Assistant III	FT	A	GP	Tok	200	15E / F	12.0		56,569	804	2,132	40,533	100,038	85,032
25-1905	Administrative Assistant III	FT	A	GP	Fairbanks	203	15D / E	12.0		55,972	796	2,127	40,310	99,205	84,324
25-1907	Office Assistant III	FT	A	GP	Cordova	211	11K / L	12.0		53,874	767	2,069	39,512	96,222	96,222
25-1908	Equipment Operator Foreman I	FT	A	LL	Galena	2JJ	51B / C	12.0		66,969	0	4,788	45,265	117,022	80,750
25-1909	Equipment Operator, Journey II	FT	A	LL	Galena	2JJ	53B / C	12.0		61,357	0	4,302	43,006	108,665	97,799
25-1911	Equipment Operator, Journey II	FT	A	LL	Trimms Camp	2FF	53N	12.0		75,011	0	5,410	48,474	128,895	64,448
25-1914	Engineer/Architect IV	FT	A	SS	Fairbanks	203	26M	12.0		147,306	0	0	73,116	220,422	220,422
25-1915	Equipment Operator Foreman I	FT	A	LL	Fairbanks	2EE	51L / M	12.0		79,747	0	5,602	50,300	135,649	67,825
25-1916	Mts/Tces Jrnyii	FT	A	LL	Fairbanks	2EE	51F / J	12.0		71,917	0	5,046	47,193	124,156	80,230
25-1917	Equipment Operator, Journey II	FT	A	LL	Fairbanks	2EE	53F	12.0		62,263	0	4,491	43,412	110,166	33,050
25-1918	Equipment Operator, Journey I	FT	A	LL	Fairbanks	2EE	54C / D	12.0		53,588	0	3,844	39,959	97,391	19,478
25-1919	Equipment Operator Foreman II	FT	A	LL	Fairbanks	2EE	50M	12.0		84,432	0	6,090	52,216	142,738	57,095
25-1920	Equipment Operator Foreman I	FT	A	LL	Fairbanks	2EE	51M / N	12.0		82,352	0	5,802	51,339	139,493	62,772
25-1921	Equipment Operator, Journey II	FT	A	LL	Cantwell	2HH	53B / C	12.0		58,806	0	4,161	42,009	104,976	62,986
25-1924	Equipment Operator, Journey II	FT	A	LL	Fairbanks	2EE	53D / E	12.0		60,208	0	4,210	42,547	106,965	42,786
25-1926	Equipment Operator, Journey II	FT	A	LL	Fairbanks	2EE	53J / K	12.0		65,864	0	4,648	44,804	115,316	57,658
25-1927	Equipment Operator Foreman I	FT	A	LL	Fairbanks	2EE	51K / L	12.0		75,122	0	5,410	48,515	129,047	45,167
25-1928	Equipment Operator, Journey I	FT	A	LL	Fairbanks	2EE	54C / D	12.0		53,444	0	3,844	39,906	97,194	0
25-1929	Equipment Operator Foreman I	FT	A	LL	Fairbanks	2EE	51M	12.0		80,439	0	5,802	50,630	136,871	54,748
25-1930	Equipment Operator, Journey II	FT	A	LL	Fairbanks	2EE	53M / N	12.0		73,611	0	5,157	47,862	126,630	63,315
25-1931	Equipment Operator, Journey II	FT	A	LL	Fairbanks	2EE	53L / M	12.0		69,956	0	4,981	46,443	121,380	60,690
25-1932	Mts/Bfc Frmn	FT	A	LL	Fairbanks	2EE	50O	12.0		90,587	0	6,534	54,660	151,781	60,712

Note: If a position is split, an asterisk (\*) will appear in the Split/Count column. If the split position is also counted in the component, two asterisks (\*\*) will appear in this column. [No valid job title] appearing in the Job Class Title indicates that the PCN has an invalid class code or invalid range for the class code effective date of this scenario.

**Personal Services Expenditure Detail**  
**Department of Transportation/Public Facilities**

**Scenario:** FY2022 Governor (17280)  
**Component:** Northern Region Highways and Aviation (2068)  
**RDU:** Highways, Aviation and Facilities (408)

PCN	Job Class Title	Time Status	Retire Code	Barg Unit	Location	Salary Sched	Range / Step	Comp Months	Split / Count	Annual Salaries	COLA	Premium Pay	Annual Benefits	Total Costs	UGF Amount
25-1933	Equipment Operator, Journey I	FT	A	LL	Fairbanks	2EE	54C / D	12.0		54,163	0	3,844	40,172	98,179	49,090
25-1934	Equipment Operator, Journey II	FT	A	LL	Montana Creek	2EE	53F	12.0		62,263	0	4,491	43,412	110,166	66,100
25-1935	Equipment Operator, Journey II	FT	A	LL	Fairbanks	2EE	53D / E	12.0		59,809	0	4,210	42,399	106,418	53,209
25-1936	Equipment Operator, Journey II	FT	A	LL	Fairbanks	2EE	53N	12.0		74,034	0	5,340	48,086	127,460	63,730
25-1937	Equipment Operator, Journey II	FT	A	LL	Fairbanks	2EE	53E / F	12.0		61,111	0	4,348	42,932	108,391	59,615
25-1938	Equipment Operator, Journey I	PT	A	LL	Delta Junction	2FF	54C / D	8.0		36,473	0	2,936	27,055	66,464	39,878
25-1939	Equipment Operator, Journey II	FT	A	LL	Paxson	2FF	53A / B	12.0		55,137	0	3,894	40,551	99,582	49,791
25-1940	E/Op Subjmy I	PT	A	LL	Fairbanks	2EE	58D / E	8.0		29,977	0	2,413	24,455	56,845	0
25-1941	Equipment Operator, Journey II	FT	A	LL	Fairbanks	2EE	53O / P	12.0		79,378	0	5,725	50,208	135,311	67,656
25-1942	Equipment Operator, Journey I	PT	A	LL	Nenana	2HH	54L	9.0		51,002	0	3,678	34,268	88,948	53,369
25-1943	Equipment Operator, Journey II	FT	A	LL	Fairbanks	2EE	53C / D	12.0		57,295	0	4,077	41,418	102,790	51,395
25-1944	Equipment Operator, Journey I	FT	A	LL	Fairbanks	2EE	54B / C	12.0		52,399	0	3,724	39,474	95,597	52,578
25-1946	Equipment Operator, Journey I	FT	A	LL	Fairbanks	2EE	54C / D	12.0		53,732	0	3,844	40,012	97,588	48,794
25-1947	Equipment Operator Foreman I	FT	A	LL	Delta Junction	2FF	51N	12.0		84,286	0	6,079	52,157	142,522	71,351
25-1948	Equipment Operator, Journey II	FT	A	LL	Delta Junction	2FF	53E / F	12.0		61,347	0	4,419	43,046	108,812	65,287
25-1949	Equipment Operator, Journey II	FT	A	LL	Delta Junction	2FF	53J	12.0		65,424	0	4,719	44,667	114,810	57,405
25-1950	Equipment Operator, Journey II	FT	A	LL	Delta Junction	2FF	53O	12.0		77,631	0	5,599	49,515	132,745	79,647
25-1951	Equipment Operator, Journey II	FT	A	LL	Delta Junction	2FF	53P / Q	12.0		83,184	0	6,000	51,720	140,904	84,542
25-1952	Equipment Operator Foreman I	FT	A	LL	Cantwell	2HH	51O	12.0		89,236	0	6,436	54,123	149,795	52,428
25-1954	Administrative Assistant III	FT	A	GP	Fairbanks	203	15J	12.0		63,960	910	2,460	43,392	110,722	94,114
25-1955	Equipment Operator,	FT	A	LL	Nenana	2HH	53C / D	12.0		59,554	0	4,290	42,334	106,178	53,089

Note: If a position is split, an asterisk (\*) will appear in the Split/Count column. If the split position is also counted in the component, two asterisks (\*\*) will appear in this column. [No valid job title] appearing in the Job Class Title indicates that the PCN has an invalid class code or invalid range for the class code effective date of this scenario.

**Personal Services Expenditure Detail**  
**Department of Transportation/Public Facilities**

**Scenario:** FY2022 Governor (17280)  
**Component:** Northern Region Highways and Aviation (2068)  
**RDU:** Highways, Aviation and Facilities (408)

PCN	Job Class Title	Time Status	Retire Code	Barg Unit	Location	Salary Sched	Range / Step	Comp Months	Split / Count	Annual Salaries	COLA	Premium Pay	Annual Benefits	Total Costs	UGF Amount
25-1957	Journey II Equipment Operator Foreman I	FT	A	LL	Tok	2FF	51M	12.0		81,416	0	5,872	51,018	138,306	69,153
25-1958	Equipment Operator, Journey II	FT	A	LL	Tok	2FF	53M / N	12.0		73,108	0	5,227	47,702	126,037	69,320
25-1959	Equipment Operator, Journey II	PT	A	LL	Tok	2FF	53D / E	8.0		39,632	0	3,210	28,326	71,168	42,701
25-1960	Equipment Operator, Journey II	FT	A	LL	Manley Hot Springs	2HH	53C / D	12.0		60,402	0	12,870	45,826	119,098	83,369
25-1961	Equipment Operator, Journey I	PT	A	LL	Healy	2HH	54A / B	6.0		26,754	0	2,865	20,314	49,933	0
25-1962	Equipment Operator, Journey II	FT	A	LL	Tok	2FF	53E / F	12.0		62,664	0	4,419	43,534	110,617	66,370
25-1964	Equipment Operator, Journey I	FT	A	LL	Montana Creek	2EE	54B / C	12.0		52,607	0	7,449	40,931	100,987	60,592
25-1965	E/Op Jrny III	FT	A	LL	Deadhorse	2JJ	52D / E	12.0		68,213	0	14,521	49,331	132,065	0
25-1966	Equipment Operator, Journey I	PT	A	LL	Tok	2FF	54C / D	11.5		52,448	0	3,915	38,785	95,148	52,331
25-1967	E/Op Subjrny II	PT	A	LL	Delta Junction	2FF	56A / B	11.5		44,782	0	3,303	35,718	83,803	0
25-1968	Mts/Tces Jrnyii	FT	A	LL	Fairbanks	2EE	51F	12.0		69,958	0	5,046	46,468	121,472	0
25-1969	Equipment Operator, Journey I	FT	A	LL	Manley Hot Springs	2HH	54C / D	12.0		56,541	0	12,172	44,138	112,851	78,996
25-1971	Equipment Operator, Journey II	FT	A	LL	Manley Hot Springs	2HH	53D / E	12.0		62,364	0	13,270	46,701	122,335	73,401
25-1973	Equipment Operator, Journey I	PT	A	LL	Fairbanks	2EE	54A / B	8.0		33,884	0	2,705	26,010	62,599	0
25-1975	Equipment Operator, Journey II	FT	A	LL	Delta Junction	2FF	53O	12.0		77,631	0	5,599	49,515	132,745	0
25-1977	Equipment Operator, Journey II	FT	A	LL	Tok	2FF	53N	12.0		75,011	0	5,410	48,474	128,895	0
25-1979	Equipment Operator, Journey II	FT	A	LL	Fairbanks	2EE	53J	12.0		64,447	0	4,648	44,279	113,374	62,356
25-1980	E/Op Jrny III	FT	A	LL	Livengood	2HH	52N / O	12.0		83,925	0	17,730	56,339	157,994	0
25-1981	Equipment Operator, Journey II	FT	A	LL	Livengood	2HH	53A / B	12.0		57,113	0	12,109	44,326	113,548	0
25-1982	E/Op Jrny III	FT	A	LL	Manley Hot Springs	2HH	52N	12.0		81,936	0	17,730	55,603	155,269	77,635
25-1983	E/Op Jrny III	PT	A	LL	South Fork	2FF	52D / E	8.0		43,223	0	3,417	29,733	76,373	68,736

Note: If a position is split, an asterisk (\*) will appear in the Split/Count column. If the split position is also counted in the component, two asterisks (\*\*) will appear in this column.  
[No valid job title] appearing in the Job Class Title indicates that the PCN has an invalid class code or invalid range for the class code effective date of this scenario.



**Personal Services Expenditure Detail**  
**Department of Transportation/Public Facilities**

**Scenario:** FY2022 Governor (17280)  
**Component:** Northern Region Highways and Aviation (2068)  
**RDU:** Highways, Aviation and Facilities (408)

PCN	Job Class Title	Time Status	Retire Code	Barg Unit	Location	Salary Sched	Range / Step	Comp Months	Split / Count	Annual Salaries	COLA	Premium Pay	Annual Benefits	Total Costs	UGF Amount
25-1985	Equipment Operator, Journey II	FT	A	LL	Livengood	2HH	53K	12.0		69,667	0	15,075	50,075	134,817	0
25-1986	Equipment Operator, Journey II	FT	A	LL	Fairbanks	2EE	53M	12.0		71,497	0	5,157	47,079	123,733	0
25-1989	Equipment Operator, Journey II	FT	A	LL	Fairbanks	2EE	53K / L	12.0		68,280	0	4,812	45,760	118,852	0
25-1990	E/Op Jrny III	FT	A	LL	Nenana	2HH	52L / M	12.0		76,831	0	5,526	49,191	131,548	0
25-1991	Equipment Operator, Journey II	FT	A	LL	Cantwell	2HH	53M / N	12.0		76,775	0	5,370	49,113	131,258	52,503
25-1992	Equipment Operator, Journey II	FT	A	LL	Tok	2FF	53N	12.0		75,011	0	5,410	48,474	128,895	0
25-1993	Equipment Operator, Journey II	FT	A	LL	Nenana	2HH	53K	12.0		69,667	0	5,025	46,352	121,044	0
25-1994	E/Op Subjrny II	PT	A	LL	Tok	2FF	56A / B	11.5		45,176	0	3,303	35,864	84,343	0
25-1995	E/Op Jrny III	FT	A	LL	Healy	2HH	52J	12.0		71,663	0	5,169	47,145	123,977	61,989
25-1996	Equipment Operator, Journey I	FT	A	LL	Fairbanks	2EE	54F	12.0		58,666	0	4,231	41,983	104,880	0
25-1997	Equipment Operator, Journey II	FT	A	LL	Healy	2HH	53K	12.0		69,667	0	5,025	46,352	121,044	60,522
25-1998	Equipment Operator, Journey II	PT	A	LL	Healy	2HH	53E / F	6.0		31,867	0	3,421	22,414	57,702	0
25-1999	Equipment Operator, Journey II	FT	A	LL	Cantwell	2HH	53D / E	12.0		62,523	0	4,423	43,483	110,429	55,215
25-2000	Equipment Operator, Journey II	FT	A	LL	Cantwell	2HH	53J / K	12.0		67,589	0	4,861	45,522	117,972	82,580
25-2001	Equipment Operator, Journey II	FT	A	LL	Cantwell	2HH	53J / K	12.0		67,494	0	4,861	45,487	117,842	35,353
25-2002	E/Op Jrny III	FT	A	LL	Northway	2FF	52O	12.0		82,768	0	5,970	51,555	140,293	91,191
25-2003	Equipment Operator, Journey II	PT	A	LL	Northway	2FF	53C / D	6.0		29,290	0	3,110	21,344	53,744	0
25-2005	Equipment Operator, Journey II	FT	A	LL	Northway	2FF	53N	12.0		75,011	0	5,410	48,474	128,895	77,337
25-2006	Mts/EI Jrny II	FT	A	LL	Utqiagvik	2JJ	51A / B	12.0		65,729	0	13,941	48,196	127,866	0
25-2008	Equipment Operator, Journey II	FT	A	LL	Livengood	2HH	53F / J	12.0		65,489	0	14,112	48,170	127,771	76,663
25-2009	Equipment Operator, Journey I	PT	A	LL	South Fork	2FF	54B	8.0		35,076	0	2,846	26,504	64,426	57,983
25-2010	Equipment Operator, Journey II	PT	A	LL	South Fork	2FF	53A / B	8.0		36,926	0	2,920	27,216	67,062	60,356

Note: If a position is split, an asterisk (\*) will appear in the Split/Count column. If the split position is also counted in the component, two asterisks (\*\*) will appear in this column. [No valid job title] appearing in the Job Class Title indicates that the PCN has an invalid class code or invalid range for the class code effective date of this scenario.

**Personal Services Expenditure Detail**  
**Department of Transportation/Public Facilities**

**Scenario:** FY2022 Governor (17280)  
**Component:** Northern Region Highways and Aviation (2068)  
**RDU:** Highways, Aviation and Facilities (408)

PCN	Job Class Title	Time Status	Retire Code	Barg Unit	Location	Salary Sched	Range / Step	Comp Months	Split / Count	Annual Salaries	COLA	Premium Pay	Annual Benefits	Total Costs	UGF Amount
25-2011	Equipment Operator, Journey II	PT	A	LL	South Fork	2FF	53C / D	8.0		39,259	0	3,110	28,151	70,520	63,468
25-2012	Equipment Operator, Journey II	PT	A	LL	Eagle	2FF	53J / K	7.0		38,636	0	3,539	26,522	68,697	61,827
25-2013	E/Op Jrny III	FT	A	LL	Eagle	2FF	52K / L	12.0		73,798	0	5,202	47,948	126,948	114,253
25-2014	Equipment Operator, Journey II	PT	A	LL	Eagle	2FF	53F	7.0		36,890	0	3,421	25,832	66,143	59,529
25-2017	Equipment Operator, Journey I	FT	A	LL	Fairbanks	2EE	54C / D	12.0		53,444	0	3,844	39,906	97,194	0
25-2018	E/Op Subjrny II	PT	A	LL	Nenana	2HH	56A / B	11.0		44,989	0	3,540	35,104	83,633	0
25-2019	E/Op Subjrny II	FT	A	LL	Chandalar (Chandler) Camp	2JJ	56B / C	12.0		51,990	0	11,020	42,025	105,035	68,273
25-2021	Equipment Operator, Journey II	FT	A	LL	Northway	2FF	53D / E	12.0		59,671	0	4,281	42,374	106,326	63,796
25-2022	Equipment Operator, Journey I	FT	A	LL	Fairbanks	2EE	54A / B	12.0		51,096	0	3,607	38,948	93,651	56,191
25-2023	Rural Airport Foreman	FT	A	LL	Deadhorse	2JJ	49M / N	12.0		93,409	0	20,155	60,750	174,314	0
25-2025	Equipment Operator, Journey II	PT	A	LL	Cantwell	2HH	53A / B	6.0		28,269	0	3,027	20,935	52,231	5,223
25-2026	Equipment Operator, Journey II	FT	A	LL	Dalton Highway	2JJ	53M	12.0		71,497	0	15,471	50,899	137,867	0
25-2028	E/Op Jrny III	FT	A	LL	Chandalar (Chandler) Camp	2JJ	52L	12.0		78,567	0	17,001	54,085	149,653	67,344
25-2029	E/Op Jrny III	FT	A	LL	Sag River	2JJ	52L / M	12.0		79,987	0	17,001	54,611	151,599	98,539
25-2030	E/Op Jrny III	FT	A	LL	Seven Mile Camp	2JJ	52L	12.0		78,567	0	17,001	54,085	149,653	97,275
25-2031	Equipment Operator, Journey II	FT	A	LL	Seven Mile Camp	2JJ	53M	12.0		76,405	0	16,533	53,111	146,049	94,932
25-2032	E/Op Jrny III	FT	A	LL	Jim River	2JJ	52F / J	12.0		72,932	0	15,421	51,412	139,765	83,859
25-2034	E/Op Jrny III	FT	A	LL	Coldfoot Camp	2JJ	52M / N	12.0		81,751	0	17,568	55,474	154,793	77,397
25-2035	Equipment Operator, Journey II	FT	A	LL	Sag River	2JJ	53L / M	12.0		74,174	0	16,006	52,089	142,269	92,475
25-2036	Equipment Operator, Journey II	PT	A	LL	Chandalar (Chandler) Camp	2JJ	53F / J	11.5		65,009	0	14,535	47,371	126,915	69,803
25-2037	Equipment Operator,	FT	A	LL	Unalakleet	2II	53F	11.5		63,436	0	4,774	43,173	111,383	0

Note: If a position is split, an asterisk (\*) will appear in the Split/Count column. If the split position is also counted in the component, two asterisks (\*\*) will appear in this column. [No valid job title] appearing in the Job Class Title indicates that the PCN has an invalid class code or invalid range for the class code effective date of this scenario.

**Personal Services Expenditure Detail**  
**Department of Transportation/Public Facilities**

**Scenario:** FY2022 Governor (17280)  
**Component:** Northern Region Highways and Aviation (2068)  
**RDU:** Highways, Aviation and Facilities (408)

PCN	Job Class Title	Time Status	Retire Code	Barg Unit	Location	Salary Sched	Range / Step	Comp Months	Split / Count	Annual Salaries	COLA	Premium Pay	Annual Benefits	Total Costs	UGF Amount
25-2038	Journey II Equipment Operator, Journey II	FT	A	LL	Dalton Highway	2JJ	53D / E	12.0		59,730	0	12,631	45,489	117,850	0
25-2040	Equipment Operator, Journey I	FT	A	LL	Sag River	2JJ	54B / C	12.0		57,584	0	12,235	44,547	114,366	74,338
25-2041	Equipment Operator Foreman I	FT	A	LL	Dalton Highway	2JJ	51L	12.0		77,673	0	16,807	53,682	148,162	0
25-2042	Equipment Operator, Journey II	FT	A	LL	Coldfoot Camp	2JJ	53A / B	12.0		59,068	0	12,532	45,207	116,807	58,404
25-2043	E/Op Jrny III	FT	A	LL	Deadhorse	2JJ	52K / L	12.0		76,890	0	16,456	53,262	146,608	0
25-2044	E/Op Jrny III	FT	A	LL	Utqiagvik	2JJ	52O	12.0		86,699	0	18,760	57,748	163,207	0
25-2045	Equipment Operator, Journey II	FT	A	LL	Dalton Highway	2JJ	53A / B	12.0		54,160	0	11,470	42,996	108,626	0
25-2046	E/Op Jrny III	FT	A	LL	Deadhorse	2JJ	52F / J	12.0		72,835	0	15,421	51,376	139,632	0
25-2047	E/Op Jrny III	FT	A	LL	Deadhorse	2JJ	52L / M	12.0		80,314	0	17,001	54,732	152,047	0
25-2048	E/Op Jrny III	FT	A	LL	Deadhorse	2JJ	52N / O	12.0		86,582	0	18,153	57,480	162,215	0
25-2049	Equipment Operator, Journey I	FT	A	LL	Montana Creek	2EE	54A / B	12.0		51,501	0	7,215	40,435	99,151	59,491
25-2050	Equipment Operator, Journey I	FT	A	LL	Manley Hot Springs	2HH	54C / D	12.0		57,116	0	12,172	44,351	113,639	68,183
25-2051	Equipment Operator, Journey II	FT	A	LL	Chandalar (Chandler) Camp	2JJ	53N	12.0		78,942	0	17,082	54,254	150,278	82,653
25-2053	Equipment Operator, Journey II	FT	A	LL	Jim River	2JJ	53A / B	12.0		59,068	0	12,532	45,207	116,807	70,084
25-2055	E/Op Subjrny II	FT	A	LL	Jim River	2JJ	56B / C	12.0		51,179	0	11,020	41,725	103,924	51,962
25-2056	Mts/EI Jrny II	FT	A	LL	Deadhorse	2JJ	51A / B	12.0		65,729	0	13,941	48,196	127,866	0
25-2057	Equipment Operator, Journey II	FT	A	LL	Sag River	2JJ	53J / K	12.0		70,299	0	15,007	50,284	135,590	88,134
25-2058	Equipment Operator, Journey II	FT	A	LL	Jim River	2JJ	53E / F	12.0		65,442	0	14,107	48,151	127,700	76,620
25-2059	Equipment Operator, Journey I	FT	A	LL	Sag River	2JJ	54C / D	12.0		58,999	0	12,595	45,205	116,799	75,919
25-2060	Equipment Operator, Journey II	FT	A	LL	Livengood	2HH	53A / B	12.0		57,113	0	12,109	44,326	113,548	68,129
25-2061	Equipment Operator Foreman II	FT	A	LL	Deadhorse	2JJ	50L	12.0		86,428	0	18,702	57,626	162,756	0
25-2062	Equipment Operator, Journey II	FT	A	LL	Chandalar (Chandler)	2JJ	53M / N	12.0		77,884	0	16,533	53,658	148,075	81,441

Note: If a position is split, an asterisk (\*) will appear in the Split/Count column. If the split position is also counted in the component, two asterisks (\*\*) will appear in this column.  
[No valid job title] appearing in the Job Class Title indicates that the PCN has an invalid class code or invalid range for the class code effective date of this scenario.

**Personal Services Expenditure Detail**  
**Department of Transportation/Public Facilities**

**Scenario:** FY2022 Governor (17280)  
**Component:** Northern Region Highways and Aviation (2068)  
**RDU:** Highways, Aviation and Facilities (408)

PCN	Job Class Title	Time Status	Retire Code	Barg Unit	Location	Salary Sched	Range / Step	Comp Months	Split / Count	Annual Salaries	COLA	Premium Pay	Annual Benefits	Total Costs	UGF Amount
25-2064	E/Op Jrny III	FT	A	LL	Camp Deadhorse	2JJ	52L / M	12.0		80,314	0	17,001	54,732	152,047	0
25-2065	Equipment Operator, Journey II	FT	A	LL	Seven Mile Camp	2JJ	53P / Q	12.0		87,114	0	18,850	57,935	163,899	106,534
25-2066	Equipment Operator, Journey II	FT	A	LL	Jim River	2JJ	53K	12.0		71,621	0	15,498	50,955	138,074	69,037
25-2068	E/Op Jrny III	FT	A	LL	Deadhorse	2JJ	52E / F	12.0		70,384	0	14,962	50,298	135,644	0
25-2069	E/Op Subjrny II	FT	A	LL	Livengood	2HH	56B / C	12.0		50,576	0	10,944	41,473	102,993	41,197
25-2070	Equipment Operator, Journey II	FT	A	LL	Chandalar (Chandler) Camp	2JJ	53B / C	12.0		60,299	0	12,906	45,801	119,006	47,602
25-2071	Equipment Operator, Journey II	FT	A	LL	Fairbanks	2EE	53J	12.0		64,447	0	4,648	44,279	113,374	45,350
25-2072	Equipment Operator, Journey I	FT	A	LL	Fairbanks	2EE	54D / E	12.0		55,682	0	3,969	40,781	100,432	40,173
25-2073	Administrative Assistant III	FT	A	GP	Fairbanks	203	15B / C	12.0		52,638	748	1,980	39,021	94,387	80,229
25-2074	E/Op Subjrny I	PT	A	LL	Fairbanks	2EE	58B	10.0		34,903	0	3,021	29,619	67,543	27,017
25-2075	Mts/Tces Frmn	FT	A	LL	Fairbanks	2EE	50E / F	12.0		71,452	0	5,125	47,050	123,627	0
25-2077	Equipment Operator, Journey I	FT	A	LL	Fairbanks	2EE	54C / D	12.0		53,804	0	3,844	40,039	97,687	39,075
25-2079	Equipment Operator, Journey I	FT	A	LL	Fairbanks	2EE	54J	12.0		60,724	0	4,380	42,801	107,905	43,162
25-2080	E/Op Subjrny II	FT	A	LL	Seven Mile Camp	2JJ	56B / C	12.0		51,740	0	11,020	41,933	104,693	0
25-2081	Equipment Operator, Journey I	FT	A	LL	Fairbanks	2EE	54B / C	12.0		53,120	0	3,724	39,741	96,585	38,634
25-2083	Equipment Operator, Journey II	PT	A	LL	Trimms Camp	2FF	53C / D	9.0		44,205	0	3,110	31,540	78,855	47,313
25-2085	Equipment Operator, Journey II	PT	A	LL	Trimms Camp	2FF	53C / D	9.0		44,128	0	3,110	31,512	78,750	31,500
25-2086	Equipment Operator, Journey II	PT	A	LL	Coldfoot Camp	2JJ	53K	11.5		68,637	0	15,498	49,071	133,206	53,282
25-2087	Equipment Operator, Journey II	FT	A	LL	Nenana	2HH	53M / N	12.0		76,881	0	5,370	49,152	131,403	78,842
25-2088	Equipment Operator, Journey II	FT	A	LL	Fairbanks	2EE	53E / F	12.0		61,275	0	4,348	42,993	108,616	54,308
25-2089	Equipment Operator, Journey II	FT	A	LL	Tok	2FF	53J	12.0		65,424	0	4,719	44,667	114,810	45,924
25-2090	Equipment Operator,	FT	A	LL	Chandalar	2JJ	53O	12.0		81,562	0	17,649	55,434	154,645	61,858

Note: If a position is split, an asterisk (\*) will appear in the Split/Count column. If the split position is also counted in the component, two asterisks (\*\*) will appear in this column. [No valid job title] appearing in the Job Class Title indicates that the PCN has an invalid class code or invalid range for the class code effective date of this scenario.

**Personal Services Expenditure Detail**  
**Department of Transportation/Public Facilities**

**Scenario:** FY2022 Governor (17280)  
**Component:** Northern Region Highways and Aviation (2068)  
**RDU:** Highways, Aviation and Facilities (408)

PCN	Job Class Title	Time Status	Retire Code	Barg Unit	Location	Salary Sched	Range / Step	Comp Months	Split / Count	Annual Salaries	COLA	Premium Pay	Annual Benefits	Total Costs	UGF Amount
	Journey II				(Chandler) Camp										
25-2091	Equipment Operator, Journey II	FT	A	LL	Seven Mile Camp	2JJ	53F	12.0		67,171	0	14,535	48,950	130,656	52,262
25-2098	Safety Officer	FT	A	GP	Fairbanks	203	18K / L	12.0		81,434	1,201	6,222	51,258	140,115	126,104
25-2117	Administrative Assistant I	FT	A	GP	Fairbanks	203	12J / K	12.0		53,077	755	1,989	39,187	95,008	80,757
25-2119	Engineer/Architect III	FT	A	SS	Fairbanks	203	25F / J	12.0		126,578	0	0	65,715	192,293	38,459
25-2120	Accounting Technician I	FT	A	GP	Fairbanks	203	12G	12.0		49,628	732	3,817	38,586	92,763	83,487
25-2122	Administrative Officer II	FT	A	SS	Fairbanks	203	19A / B	12.0		72,003	0	0	45,500	117,503	117,503
25-2123	Rural Airport Foreman	FT	A	LL	Nome	2II	49M	12.0		92,168	0	6,648	55,288	154,104	15,410
25-2124	Equipment Operator Foreman I	FT	A	LL	Nome	2II	51J / K	12.0		78,082	0	5,508	49,648	133,238	79,943
25-2125	E/Op Jrny III	FT	A	LL	Nome	2II	52L / M	12.0		79,773	0	5,596	50,307	135,676	20,351
25-2126	Equipment Operator, Journey II	FT	A	LL	Nome	2II	53F / J	12.0		67,376	0	4,774	45,411	117,561	70,537
25-2127	Equipment Operator, Journey II	FT	A	LL	Valdez	2FF	53J	12.0		65,424	0	4,719	44,667	114,810	74,627
25-2128	Rural Airport Foreman	FT	A	LL	Kotzebue	2JJ	49L	12.0		90,088	0	6,498	54,462	151,048	0
25-2129	E/Op Jrny III	FT	A	LL	Kotzebue	2JJ	52A / B	12.0		62,610	0	4,428	43,517	110,555	0
25-2130	E/Op Jrny III	FT	A	LL	Kotzebue	2JJ	52C / D	12.0		66,532	0	4,698	45,070	116,300	0
25-2132	Equipment Operator Foreman I	FT	A	LL	Unalakleet	2II	51M / N	12.0		85,087	0	6,085	52,456	143,628	0
25-2135	Equipment Operator, Journey II	FT	A	LL	Nome	2II	53D / E	12.0		63,006	0	4,494	43,688	111,188	66,713
25-2136	Equipment Operator, Journey II	FT	A	LL	Nome	2II	53B / C	12.0		59,321	0	4,231	42,226	105,778	63,467
25-2137	E/Op Jrny III	FT	A	LL	Kotzebue	2JJ	52M / N	12.0		83,891	0	6,051	52,001	141,943	0
25-2138	Administrative Assistant III	FT	A	GP	Nome	237	15A / B	12.0		68,260	970	2,538	45,014	116,782	99,265
25-2139	E/Op Jrny III	FT	A	LL	Nome	2II	52N	12.0		82,914	0	5,980	51,613	140,507	21,076
25-2140	E/Op Jrny III	FT	A	LL	Nome	2II	52J	12.0		72,640	0	5,239	47,533	125,412	18,812
25-2142	Office Assistant III	FT	A	GP	Kotzebue	260	11G / J	12.0		74,633	1,061	2,774	47,462	125,930	125,930
25-2144	Mts/EI Jrny II	FT	A	LL	Fairbanks	2EE	51A / B	12.0		0	0	0	0	0	0
25-2146	E/Op Jrny III	FT	A	LL	Nome	2II	52C / D	12.0		65,308	0	4,627	44,590	114,525	17,179
25-2147	E/Op Jrny III	FT	A	LL	Kotzebue	2JJ	52C / D	12.0		66,286	0	4,698	44,979	115,963	0
25-2149	Equipment Operator, Journey II	FT	A	LL	Unalakleet	2II	53J	12.0		68,377	0	4,932	45,840	119,149	0
25-2151	Equipment Operator, Journey II	FT	A	LL	Nome	2II	53F / J	12.0		66,922	0	4,774	45,242	116,938	70,163
25-2152	Equipment Operator,	FT	A	LL	Nome	2II	53F / J	12.0		67,922	0	4,774	45,613	118,309	70,985

Note: If a position is split, an asterisk (\*) will appear in the Split/Count column. If the split position is also counted in the component, two asterisks (\*\*) will appear in this column. [No valid job title] appearing in the Job Class Title indicates that the PCN has an invalid class code or invalid range for the class code effective date of this scenario.

**Personal Services Expenditure Detail**  
**Department of Transportation/Public Facilities**

**Scenario:** FY2022 Governor (17280)  
**Component:** Northern Region Highways and Aviation (2068)  
**RDU:** Highways, Aviation and Facilities (408)

PCN	Job Class Title	Time Status	Retire Code	Barg Unit	Location	Salary Sched	Range / Step	Comp Months	Split / Count	Annual Salaries	COLA	Premium Pay	Annual Benefits	Total Costs	UGF Amount
25-2153	Journey II Equipment Operator, Journey II	FT	A	LL	Nome	2II	53A / B	12.0		58,090	0	4,107	41,724	103,921	62,353
25-2154	E/Op Jrny III	FT	A	LL	Nome	2II	52F / J	12.0		70,486	0	5,070	46,672	122,228	18,334
25-2162	Maint & OPS Spr	FT	A	SS	Nome	237	21F / J	12.0		130,520	0	0	67,175	197,695	158,156
25-2164	E/Op Jrny III	FT	A	LL	Valdez	2FF	52N / O	12.0		80,662	0	5,767	50,700	137,129	89,134
25-2165	E/Op Jrny III	FT	A	LL	Valdez	2FF	52O	12.0		82,768	0	5,970	51,555	140,293	0
25-2167	Rural Airport Foreman	FT	A	LL	Valdez	2FF	49A / B	12.0		67,622	0	4,774	45,502	117,898	35,369
25-2168	E/Op Jrny III	FT	A	LL	Valdez	2FF	52K / L	12.0		73,484	0	5,202	47,832	126,518	0
25-2169	E/Op Jrny III	FT	A	LL	Cordova	2EE	52F / J	12.0		68,220	0	4,786	45,728	118,734	112,797
25-2170	Equipment Operator Foreman I	FT	A	LL	Thompson Pass	2FF	51P	12.0		90,359	0	6,517	54,569	151,445	90,867
25-2171	Equipment Operator, Journey II	PT	A	LL	Slana	2FF	53B / C	8.0		37,738	0	3,013	27,552	68,303	20,491
25-2172	E/Op Jrny III	PT	A	LL	Valdez	2FF	52K / L	10.0		61,673	0	5,202	40,342	107,217	0
25-2173	Equipment Operator, Journey II	PT	A	LL	Thompson Pass	2FF	53B / C	8.0		37,589	0	3,013	27,497	68,099	20,430
25-2174	E/Op Jrny III	FT	A	LL	Ernestine	2FF	52N / O	12.0		80,195	0	5,767	50,527	136,489	81,893
25-2175	Equipment Operator, Journey II	PT	A	LL	Thompson Pass	2FF	53E	8.0		40,843	0	3,314	28,813	72,970	43,782
25-2176	Equipment Operator, Journey II	FT	A	LL	Ernestine	2FF	53L / M	12.0		72,474	0	5,227	47,467	125,168	0
25-2177	Equipment Operator, Journey II	FT	A	LL	Slana	2FF	53C / D	12.0		58,658	0	4,147	41,949	104,754	0
25-2178	Equipment Operator, Journey II	FT	A	LL	Ernestine	2FF	53C / D	12.0		57,578	0	4,147	41,549	103,274	0
25-2179	Equipment Operator Foreman I	FT	A	LL	Tazlina	2FF	51N	12.0		84,286	0	6,079	52,157	142,522	71,261
25-2180	Equipment Operator, Journey II	FT	A	LL	Tazlina	2FF	53N	12.0		75,011	0	5,410	48,474	128,895	77,337
25-2181	Equipment Operator, Journey II	FT	A	LL	Tazlina	2FF	53C / D	12.0		59,043	0	4,147	42,092	105,282	42,113
25-2182	Equipment Operator, Journey II	FT	A	LL	Tazlina	2FF	53K / L	12.0		69,747	0	4,882	46,329	120,958	48,383
25-2183	Equipment Operator, Journey II	FT	A	LL	Tazlina	2FF	53O / P	12.0		77,972	0	5,599	49,641	133,212	79,927
25-2184	Equipment Operator, Journey II	PT	A	LL	Thompson Pass	2FF	53A / B	8.0		36,566	0	2,920	27,083	66,569	0
25-2185	Equipment Operator,	FT	A	LL	Tazlina	2FF	53C / D	12.0		57,732	0	4,147	41,606	103,485	51,743

Note: If a position is split, an asterisk (\*) will appear in the Split/Count column. If the split position is also counted in the component, two asterisks (\*\*) will appear in this column.  
 [No valid job title] appearing in the Job Class Title indicates that the PCN has an invalid class code or invalid range for the class code effective date of this scenario.

**Personal Services Expenditure Detail**  
**Department of Transportation/Public Facilities**

**Scenario:** FY2022 Governor (17280)  
**Component:** Northern Region Highways and Aviation (2068)  
**RDU:** Highways, Aviation and Facilities (408)

PCN	Job Class Title	Time Status	Retire Code	Barg Unit	Location	Salary Sched	Range / Step	Comp Months	Split / Count	Annual Salaries	COLA	Premium Pay	Annual Benefits	Total Costs	UGF Amount
25-2186	Journey II Equipment Operator, Journey II	FT	A	LL	Tazlina	2FF	53D / E	12.0		59,432	0	4,281	42,286	105,999	0
25-2187	Equipment Operator, Journey II	PT	A	LL	Thompson Pass	2FF	53B / C	8.0		37,291	0	3,013	27,386	67,690	0
25-2188	E/Op Jrny III	FT	A	LL	Paxson	2FF	52F	12.0		67,337	0	4,857	45,427	117,621	58,811
25-2189	Equipment Operator, Journey II	PT	A	LL	Ernestine	2FF	53C / D	8.0		38,874	0	3,110	28,008	69,992	0
25-2190	Equipment Operator, Journey II	FT	A	LL	Paxson	2FF	53P / Q	12.0		83,184	0	6,000	51,720	140,904	70,452
25-2191	Equipment Operator, Journey II	FT	A	LL	Nelchina	2FF	53O / P	12.0		80,129	0	5,599	50,440	136,168	68,084
25-2192	Equipment Operator, Journey II	FT	A	LL	Tazlina	2FF	53D / E	12.0		61,265	0	4,419	43,016	108,700	54,350
25-2193	E/Op Jrny III	FT	A	LL	Nelchina	2FF	52K	12.0		72,121	0	5,202	47,327	124,650	74,790
25-2194	Equipment Operator, Journey II	FT	A	LL	Paxson	2FF	53M	12.0		72,474	0	5,227	47,467	125,168	62,584
25-2195	Equipment Operator, Journey II	FT	A	LL	Nelchina	2FF	53J / K	12.0		67,597	0	4,719	45,472	117,788	58,894
25-2196	E/Op Jrny III	FT	A	LL	Slana	2FF	52F / J	12.0		68,317	0	4,857	45,790	118,964	0
25-2197	Equipment Operator, Journey II	FT	A	LL	Nelchina	2FF	53B / C	12.0		55,862	0	4,018	40,866	100,746	60,448
25-2198	Equipment Operator, Journey II	PT	A	LL	Tazlina	2FF	53E / F	8.0		41,749	0	3,314	29,149	74,212	29,685
25-2199	Equipment Operator, Journey II	FT	A	LL	Delta Junction	2FF	53K	12.0		67,691	0	4,882	45,567	118,140	70,884
25-2201	Equipment Operator, Journey II	FT	A	LL	Ernestine	2FF	53J / K	12.0		66,180	0	4,719	44,947	115,846	57,923
25-2203	Equipment Operator, Journey II	FT	A	LL	Cordova	2EE	53J	12.0		64,447	0	4,648	44,279	113,374	102,037
25-2204	E/Op Subjrny II	PT	A	LL	Tazlina	2FF	56J / K	8.0		36,970	0	2,994	27,260	67,224	23,528
25-2205	S&E Spt Spec	PT	A	GP	Thompson Pass	200	17M	8.0		52,552	783	4,551	33,678	91,564	0
25-2206	Equipment Operator, Journey I	FT	A	LL	Chandalar (Chandler) Camp	2JJ	54D / E	12.0		61,573	0	12,969	46,297	120,839	24,168
25-2208	Equipment Operator, Journey II	PT	A	LL	Paxson	2FF	53A / B	8.0		36,566	0	2,920	27,083	66,569	0
25-2209	Equipment Operator,	PT	A	LL	Ernestine	2FF	53B / C	8.0		37,812	0	3,013	27,579	68,404	23,941

Note: If a position is split, an asterisk (\*) will appear in the Split/Count column. If the split position is also counted in the component, two asterisks (\*\*) will appear in this column.  
[No valid job title] appearing in the Job Class Title indicates that the PCN has an invalid class code or invalid range for the class code effective date of this scenario.

**Personal Services Expenditure Detail**  
**Department of Transportation/Public Facilities**

**Scenario:** FY2022 Governor (17280)  
**Component:** Northern Region Highways and Aviation (2068)  
**RDU:** Highways, Aviation and Facilities (408)

PCN	Job Class Title	Time Status	Retire Code	Barg Unit	Location	Salary Sched	Range / Step	Comp Months	Split / Count	Annual Salaries	COLA	Premium Pay	Annual Benefits	Total Costs	UGF Amount
25-2210	Journey II Equipment Operator, Journey II	PT	A	LL	Valdez	2FF	53A / B	10.0		45,852	0	3,894	33,998	83,744	58,621
25-2211	Equipment Operator, Journey I	PT	A	LL	Slana	2FF	54C / D	8.0		36,976	0	2,936	27,241	67,153	40,292
25-2213	E/Op Subjrnly I	PT	A	LL	Tazlina	2FF	58B	8.0		28,532	0	2,315	23,883	54,730	19,156
25-2214	E/Op Subjrnly I	PT	A	LL	Ernestine	2FF	58B / C	8.0		28,809	0	2,315	23,986	55,110	19,289
25-2215	Equipment Operator, Journey II	PT	A	LL	Slana	2FF	53B	8.0		37,142	0	3,013	27,331	67,486	0
25-2216	E/Op Subjrnly I	PT	A	LL	Slana	2FF	58B	8.0		28,532	0	2,315	23,883	54,730	0
25-2219	Equipment Operator, Journey II	PT	A	LL	Valdez	2FF	53B / C	10.0		46,785	0	4,018	34,389	85,192	0
25-2220	Equipment Operator, Journey II	PT	A	LL	Thompson Pass	2FF	53K	8.0		45,127	0	3,661	30,529	79,317	0
25-2221	Equipment Operator, Journey II	PT	A	LL	Thompson Pass	2FF	53K	8.0		45,127	0	3,661	30,529	79,317	0
25-2222	Equipment Operator, Journey II	FT	A	LL	Valdez	2FF	53B / C	12.0		56,756	0	4,018	41,197	101,971	0
25-2232	Administrative Assistant III	FT	A	GP	Valdez	211	15D / E	12.0		60,657	863	2,292	42,107	105,919	90,031
25-2241	Maint & OPS Spr	FT	A	SS	Tazlina	200	21M	12.0		105,361	0	0	57,856	163,217	130,574
25-2242	Administrative Assistant I	FT	A	GP	Valdez	211	12G	12.0		53,489	761	2,057	39,365	95,672	81,321
25-2243	Administrative Assistant II	FT	A	GP	Fairbanks	203	14C / D	12.0		51,403	731	1,908	38,537	92,579	83,321
25-2244	Administrative Assistant III	FT	A	GP	Tazlina	200	15G / J	12.0		61,167	838	0	41,447	103,452	87,934
25-2245	Maint & OPS Spr	FT	A	SS	Valdez	211	21L	12.0		113,286	0	0	60,791	174,077	139,262
25-3356	E/Op Jrny III	FT	A	LL	Utqiagvik	2JJ	52O / P	12.0		84,026	0	19,390	56,992	160,408	0
25-3385	Maint & OPS Spr	FT	A	SS	Fairbanks	2S4	21L	12.0		108,690	0	0	59,089	167,779	134,223
25-3428	E/Op Jrny III	FT	A	LL	Trimms Camp	2FF	52F / J	12.0		68,415	0	4,857	45,826	119,098	59,549
25-3437	Equipment Operator, Journey II	FT	A	LL	Fairbanks	2EE	53E / F	12.0		61,687	0	4,348	43,146	109,181	43,672
25-3488	Administrative Assistant I	FT	A	GP	Fairbanks	203	12G	12.0		49,628	706	1,908	37,879	90,121	90,121
25-3489	Administrative Assistant I	FT	A	GP	Tok	200	12E / F	12.0		45,649	649	1,734	36,341	84,373	71,717
25-3490	Administrative Assistant I	FT	A	GP	Tazlina	200	12B / C	12.0		41,668	571	0	34,224	76,463	64,994
25-3523	Equipment Operator, Journey II	PT	A	LL	Tok	2FF	53C / D	11.5		56,108	0	4,147	40,226	100,481	0
25-3554	E/Op Jrny III	FT	A	LL	Fairbanks	2EE	52O	12.0		81,791	0	5,899	51,167	138,857	0
25-3610	Equipment Operator, Journey II	PT	A	LL	Cantwell	2HH	53E	6.0		31,620	0	3,421	22,322	57,363	11,473
25-3655	E/Op Jrny III	FT	A	LL	Kotzebue	2JJ	52N / O	12.0		84,008	0	6,051	52,044	142,103	0

Note: If a position is split, an asterisk (\*) will appear in the Split/Count column. If the split position is also counted in the component, two asterisks (\*\*) will appear in this column.  
 [No valid job title] appearing in the Job Class Title indicates that the PCN has an invalid class code or invalid range for the class code effective date of this scenario.



**Personal Services Expenditure Detail**  
**Department of Transportation/Public Facilities**

**Scenario:** FY2022 Governor (17280)  
**Component:** Northern Region Highways and Aviation (2068)  
**RDU:** Highways, Aviation and Facilities (408)

PCN	Job Class Title	Time Status	Retire Code	Barg Unit	Location	Salary Sched	Range / Step	Comp Months	Split / Count	Annual Salaries	COLA	Premium Pay	Annual Benefits	Total Costs	UGF Amount
25-3656	E/Op Jrny III	FT	A	LL	Kotzebue	2JJ	52B / C	12.0		65,133	0	4,698	44,552	114,383	0
25-3657	E/Op Jrny III	FT	A	LL	Nome	2II	52F	12.0		70,290	0	5,070	46,600	121,960	18,294
25-3658	E/Op Jrny III	FT	A	LL	Kotzebue	2JJ	52K / L	12.0		77,729	0	5,485	49,509	132,723	0
25-3660	Equipment Operator Foreman II	FT	A	LL	Utqiagvik	2JJ	50M	12.0		89,340	0	19,332	58,938	167,610	0
25-3661	Equipment Operator Foreman I	FT	A	LL	Dalton Highway	2JJ	51L	12.0		77,673	0	16,807	53,682	148,162	0
25-3662	Equipment Operator, Journey II	FT	A	LL	Dalton Highway	2JJ	53O	12.0		76,654	0	16,587	53,223	146,464	0
25-3663	Equipment Operator, Journey II	FT	A	LL	Fairbanks	2EE	53J	12.0		64,447	0	4,648	44,279	113,374	45,350
25-3664	Equipment Operator, Journey II	FT	A	LL	Chandalar (Chandler) Camp	2JJ	53J	12.0		69,355	0	15,007	49,934	134,296	53,718
25-3665	Rural Airport Foreman	FT	A	LL	Utqiagvik	2JJ	49M	12.0		93,145	0	20,155	60,653	173,953	0
25-3668	Equipment Operator, Journey I	FT	A	LL	Coldfoot Camp	2JJ	54B / C	12.0		57,584	0	12,235	44,547	114,366	45,746
25-3669	Equipment Operator, Journey II	FT	A	LL	Livengood	2HH	53K	12.0		69,667	0	15,075	50,075	134,817	0
25-3670	E/Op Jrny III	FT	A	LL	Deadhorse	2JJ	52E / F	12.0		70,296	0	14,962	50,266	135,524	0
25-3671	Equipment Operator Foreman II	FT	A	LL	Deadhorse	2JJ	50K	12.0		83,621	0	18,094	56,362	158,077	0
25-3672	Equipment Operator, Journey II	FT	A	LL	Dalton Highway	2JJ	53J	12.0		64,447	0	13,945	47,723	126,115	0
25-3673	Equipment Operator, Journey II	FT	A	LL	Montana Creek	2EE	53J	12.0		64,447	0	4,648	44,279	113,374	45,350
25-3674	Equipment Operator, Journey II	FT	A	LL	Northway	2FF	53F / J	12.0		63,332	0	4,561	43,834	111,727	0
25-3675	Equipment Operator, Journey II	FT	A	LL	Montana Creek	2EE	53J / K	12.0		66,714	0	4,812	45,180	116,706	46,682
25-3676	E/Op Jrny III	FT	A	LL	Montana Creek	2EE	52N / O	12.0		80,855	0	5,697	50,745	137,297	34,324
25-3715	Environmental Impact Analyst I	FT	A	GP	Fairbanks	203	15B / C	12.0		52,947	780	3,960	39,869	97,556	0
25-N09040	E/Op Subjrny I	NP	N	LL	Fairbanks	2EE	58A	5.0		16,914	0	2,928	2,526	22,368	0
25-N09041	E/Op Subjrny I	NP	N	LL	Fairbanks	2EE	58A	5.0		16,914	0	2,928	2,526	22,368	0
25-N09042	E/Op Subjrny I	NP	N	LL	Fairbanks	2EE	58A	5.0		16,914	0	2,928	2,526	22,368	0
25-N09043	E/Op Subjrny I	NP	N	LL	Fairbanks	2EE	58A	5.0		16,914	0	2,928	2,526	22,368	0
25-N09044	E/Op Subjrny I	NP	N	LL	Fairbanks	2EE	58A	5.0		16,914	0	2,928	2,526	22,368	0

Note: If a position is split, an asterisk (\*) will appear in the Split/Count column. If the split position is also counted in the component, two asterisks (\*\*) will appear in this column.  
[No valid job title] appearing in the Job Class Title indicates that the PCN has an invalid class code or invalid range for the class code effective date of this scenario.

**Personal Services Expenditure Detail**  
**Department of Transportation/Public Facilities**

**Scenario:** FY2022 Governor (17280)  
**Component:** Northern Region Highways and Aviation (2068)  
**RDU:** Highways, Aviation and Facilities (408)

PCN	Job Class Title	Time Status	Retire Code	Barg Unit	Location	Salary Sched	Range / Step	Comp Months	Split / Count	Annual Salaries	COLA	Premium Pay	Annual Benefits	Total Costs	UGF Amount
25-N09047	E/Op Subjrnly I	NP	N	LL	Tazlina	2FF	58A	6.0		20,754	0	2,994	3,023	26,771	0
25-N09048	E/Op Subjrnly I	NP	N	LL	Tazlina	2FF	58A	6.0		20,754	0	2,245	2,928	25,927	0
25-N09049	E/Op Subjrnly I	NP	N	LL	Tazlina	2FF	58A	6.0		20,754	0	2,994	3,023	26,771	0
25-N09050	E/Op Subjrnly I	NP	N	LL	Tazlina	2FF	58A	6.0		20,754	0	2,994	3,023	26,771	0
25-N09051	E/Op Subjrnly I	NP	N	LL	Tazlina	2FF	58A	6.0		20,754	0	2,994	3,023	26,771	0
25-N09052	E/Op Subjrnly I	NP	N	LL	Tazlina	2FF	58A	6.0		20,754	0	2,994	3,023	26,771	0
25-N11047	E/Op Subjrnly II	NP	N	LL	Dalton	2JJ	56A	5.0		18,699	0	3,237	2,792	24,728	0
25-N11048	E/Op Subjrnly II	NP	N	LL	Dalton Highway	2JJ	56A	5.0		18,699	0	3,237	2,792	24,728	0
25-N11049	E/Op Subjrnly II	NP	N	LL	Dalton Highway	2JJ	56A	5.0		18,699	0	3,237	2,792	24,728	0
25-N11050	E/Op Subjrnly II	NP	N	LL	Dalton Highway	2JJ	56A	5.0		18,699	0	3,237	2,792	24,728	0
25-N11064	E/Op Subjrnly II	NP	N	LL	Dalton Highway	2JJ	56A	5.0		18,699	0	3,237	2,792	24,728	0
25-N11065	E/Op Subjrnly II	NP	N	LL	Dalton Highway	2JJ	56A	5.0		18,699	0	3,237	2,792	24,728	0
25-N11066	E/Op Subjrnly II	NP	N	LL	Dalton Highway	2JJ	56A	5.0		18,699	0	3,237	2,792	24,728	0
25-N11067	E/Op Subjrnly II	NP	N	LL	Dalton Highway	2JJ	56A	5.0		18,699	0	3,237	2,792	24,728	0
25-N16168	E/Op Subjrnly I	NP	N	LL	Healy	2HH	58A	5.0		18,067	0	3,127	2,698	23,892	0
													<b>Total Salary Costs:</b>	20,054,730	
													<b>Total COLA:</b>	24,768	
													<b>Total Premium Pay:</b>	2,020,974	
													<b>Total Benefits:</b>	13,397,647	
													<b>Total Pre-Vacancy:</b>	35,498,119	
													<b>Minus Vacancy Adjustment of 4.95%:</b>	(1,757,319)	
													<b>Total Post-Vacancy:</b>	33,740,800	
													<b>Plus Lump Sum Premium Pay:</b>	0	
													<b>Personal Services Line 100:</b>	33,740,800	
<b>Total Component Months:</b>		3,524.5													
<b>Positions in Component:</b>		320	<b>New</b>	0	<b>Deleted</b>	1									
<b>Full Time Positions:</b>		249	0	1											
<b>Part Time Positions:</b>		51	0	0											
<b>Non Permanent Positions:</b>		20	0	0											

Note: If a position is split, an asterisk (\*) will appear in the Split/Count column. If the split position is also counted in the component, two asterisks (\*\*) will appear in this column. [No valid job title] appearing in the Job Class Title indicates that the PCN has an invalid class code or invalid range for the class code effective date of this scenario.

**Personal Services Expenditure Detail  
Department of Transportation/Public Facilities**

**Scenario:** FY2022 Governor (17280)  
**Component:** Northern Region Highways and Aviation (2068)  
**RDU:** Highways, Aviation and Facilities (408)

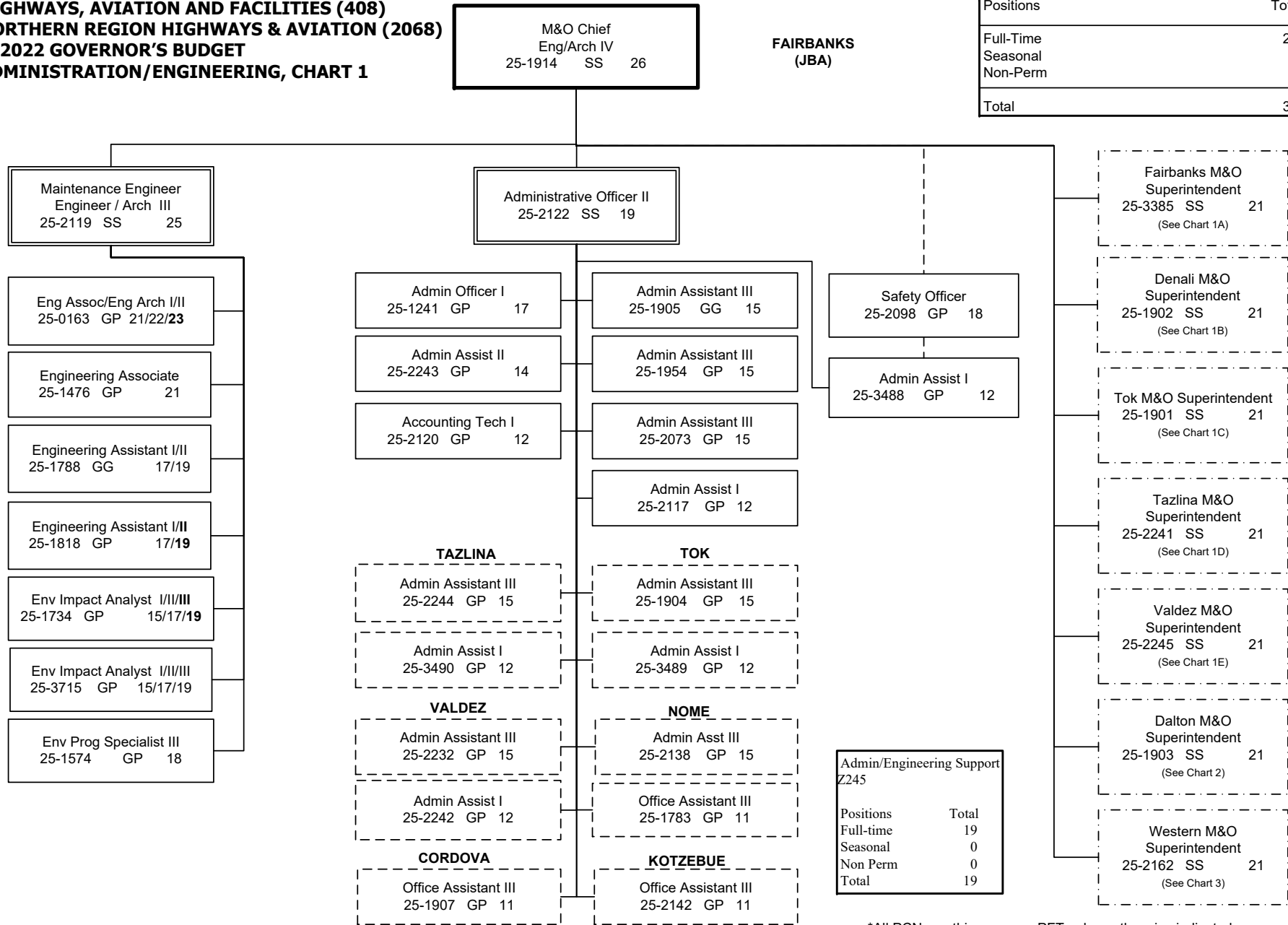
<b>PCN Funding Sources:</b>	<b>Pre-Vacancy</b>	<b>Post-Vacancy</b>	<b>Percent</b>
1002 Federal Receipts	4,450,856	4,230,519	12.54%
1004 General Fund Receipts	13,149,436	12,498,479	37.04%
1005 General Fund/Program Receipts	171,800	163,295	0.48%
1007 Interagency Receipts	87,613	83,276	0.25%
1027 International Airport Revenue Fund	54,896	52,178	0.15%
1039 U/A Indirect Cost Recovery	701,035	666,331	1.97%
1061 Capital Improvement Project Receipts	6,724,783	6,391,876	18.94%
1108 Statutory Designated Program Receipts	66,857	63,547	0.19%
1200 Vehicle Rental Tax Receipts	151,277	143,788	0.43%
1239 Aviation Fuel Tax Revenue	643,979	612,099	1.81%
1244 Rural Airport Receipts	291,924	277,472	0.82%
1249 Motor Fuel Tax Receipts	9,003,663	8,557,940	25.36%
<b>Total PCN Funding:</b>	<b>35,498,119</b>	<b>33,740,800</b>	<b>100.00%</b>

Note: If a position is split, an asterisk (\*) will appear in the Split/Count column. If the split position is also counted in the component, two asterisks (\*\*) will appear in this column. [No valid job title] appearing in the Job Class Title indicates that the PCN has an invalid class code or invalid range for the class code effective date of this scenario.

**DEPARTMENT OF TRANSPORTATION & PUBLIC FACILITIES  
HIGHWAYS, AVIATION AND FACILITIES (408)  
NORTHERN REGION HIGHWAYS & AVIATION (2068)  
FY2022 GOVERNOR'S BUDGET  
ADMINISTRATION/ENGINEERING, CHART 1**

NORTHERN REGION HIGHWAYS & AVIATION	
Positions	Total
Full-Time	249
Seasonal	51
Non-Perm	20
<b>Total</b>	<b>320</b>

**FAIRBANKS  
(JBA)**



\*All PCNs on this page are PFT unless otherwise indicated  
\*\*(s) designates PPT/seasonal

**DEPARTMENT OF TRANSPORTATION & PUBLIC FACILITIES  
HIGHWAYS, AVIATION AND FACILITIES (408)  
NORTHERN REGION HIGHWAYS & AVIATION (2068)  
FY2022 GOVERNOR'S BUDGET  
FAIRBANKS DISTRICT, CHART 1A**

Fairbanks District - Z248	
Positions	Total
Full-time	49
Seasonal(PPT)	3
Non Perm	3
Total	55

**FAIRBANKS  
(JBA)**

Eng/Arch IV  
25-1914 SS 26

Fairbanks M&O Superintendent  
25-3385 SS 21

Equipment Operator (F2)  
25-1919 LL 50

Admin Assistant III  
25-1905 GG 15

Accounting Tech I  
25-2120 GP 12

Stock & Part Svcs II  
25-1225 LL 55

KEY:

F1 – Foremen I
F2 – Foremen II
J1 – Journey I
J2 – Journey II
J3/L – Journey III/Lead
SJ1 – Sub-Journey I
SJII – Sub-Journey II
L – Lead
S – PPT/SACL

Equipment Operator (F1)  
25-1927 LL 51

Equipment Operator (J2)  
25-1458 LL 53

Equipment Operator (J2)  
25-1917 LL 53

Equipment Operator (J2)  
25-1930 LL 53

Equipment Operator (J2)  
25-2071 LL 53

Equipment Operator (J1)  
25-1933 LL 54

Equipment Operator (J1)  
25-1562 LL 54

Equipment Operator (J1)  
25-2077 LL 54

Equipment Operator (J1)  
25-2081 LL 54

Equipment Operator (F1)  
25-1920 LL 51

Equipment Operator (J2)  
25-1931 LL 53

Equipment Operator (J2)  
25-1936 LL 53

Equipment Operator (J2)  
25-1941 LL 53

Equipment Operator (J2)  
25-1943 LL 53

Equipment Operator (J2)  
25-1986 LL 53

Equipment Operator (J2)  
25-3437 LL 53

Equipment Operator (J1)  
25-2022 LL 54

Equip Operator (SJ2/J1)  
25-2017 LL 56/54

Equipment Operator (F1)  
25-1929 LL 51

Equipment Operator (J2)  
25-1924 LL 53

Equipment Operator (J2)  
25-1935 LL 53

Equipment Operator (J2)  
25-1989 LL 53

Equipment Operator (J1)  
25-1918 LL 54

Equipment Operator (J1)  
25-1928 LL 54

Equipment Operator (J1)  
25-1946 LL 54

Equipment Operator (J1)  
25-1996 LL 54

Equip Operator (SJ2/J1)  
25-1681 LL 56/54

Equipment Operator (F1)  
25-1915 LL 51

Equipment Operator (J2)  
25-1926 LL 53

Equipment Operator (J2)  
25-1937 LL 53

Equipment Operator (J2)  
25-1979 LL 53

Equipment Operator (J2)  
25-3663 LL 53

Equipment Operator (J1)  
25-1944 LL 54

Equipment Operator (J1)  
25-2072 LL 54

Equipment Operator (J1)  
25-2079 LL 54

Equipment Operator (J1)  
25-1973(s) LL 54

Equipment Operator (SJ1)  
25-1940(s) LL 58

Equipment Operator (SJ1)  
25-2074(s) LL 58

Equipment Operator (SJ1)  
25-N09042 LL 58

Equipment Operator (SJ1)  
25-N09043 LL 58

Equipment Operator (SJ1)  
25-N09044 LL 58

**TRAFFIC**

Maint Spec TCES(F1)  
25-2075 LL 50

Maint Spec TCES (J2)  
25-1916 LL 51

Maint Spec TCES (J2)  
25-1968 LL 51

**MONTANA CREEK  
(JME)**

Equipment Operator (J3/L)  
25-3676 LL 52

Equipment Operator (J1/J2)  
25-1934 LL 54/53

Equipment Operator (J1/J2)  
25-1964 LL 54/53

Equipment Operator (J1/J2)  
25-2049 LL 54/53

Equipment Operator (J1/J2)  
25-3673 LL 54/53

Equipment Operator (J1/J2)  
25-3675 LL 54/53

**SIGNS**

Equipment Operator (J2)  
25-1670 LL 53

Equipment Operator (J2)  
25-2088 LL 53

\*All PCNs are PFT unless otherwise designated  
\*\*(s) Designates PPT/seasonal position  
All positions are located in Fairbanks unless otherwise indicated

**DEPARTMENT OF TRANSPORTATION & PUBLIC FACILITIES  
HIGHWAYS, AVIATION AND FACILITIES (408)  
NORTHERN REGION HIGHWAYS & AVIATION (2068)  
FY2022 GOVERNOR'S BUDGET  
DENALI DISTRICT, CHART 1B**

**FAIRBANKS  
(JBA)**

Eng/Arch IV  
25-1914 SS 26

Denali M&O Superintendent  
25-1902 SS 21

Admin Assistant III  
25-1954 GP 15

**CANTWELL  
(HJI)**

Equipment Operator (F1)  
25-1952 LL 51

Equipment Operator (J1/J2)  
25-1921 LL 54/53

Equipment Operator (J1/J2)  
25-1991 LL 54/53

Equipment Operator (J1/J2)  
25-1999 LL 54/53

Equipment Operator (J1/J2)  
25-2000 LL 54/53

Equipment Operator (J1/J2)  
25-2001 LL 54/53

Equipment Operator (J2)  
25-2025(s) LL 53

Equipment Operator (J2)  
25-3610(s) LL 53

Equipment Operator (SJ1)  
25-1706(s) LL 58

**HEALY  
(HJA)**

Equipment Operator (J3/L)  
25-1995 LL 52

Equipment Operator (J2)  
25-1997 LL 53

Equipment Operator (J2)  
25-1998(s) LL 53

Equipment Operator (J1)  
25-1961(s) LL 54

Equipment Operator (SJ1)  
25-N16168 LL 58

**Denali District – Z251**

Positions	Total
Full-time	18
Seasonal	7
Non Perm	3
<b>Total</b>	<b>28</b>

\*All PCNs PFT unless otherwise designated

\*\* (s) designates PPT/seasonal

**NENANA  
(JBM)**

Equipment Operator (J3/L)  
25-1990 LL 52

Equipment Operator (J1/J2)  
25-1955 LL 54/53

Equipment Operator (J1/J2)  
25-1993 LL 54/53

Equipment Operator (J1/J2)  
25-2087 LL 54/53

Equipment Operator (J1)  
25-1942(s) LL 54

Equipment Operator (SJ2)  
25-2018(s) LL 56

**KEY:**

- F1 – Foremen I
- F2 – Foremen II
- J1 – Journey I
- J2 – Journey II
- J3/L – Journey III/Lead
- SJ1 – Sub-Journey I
- SJII – Sub-Journey II
- L – Lead
- S – PPT/SACL

**NR BRIDGE CREW -  
FAIRBANKS  
(JBA)**

Maint Specialist Foreman  
25-1932 LL 50

Equipment Operator (SJ1)  
25-N09041 LL 58

Equipment Operator (SJ1)  
25-N09040 LL 58

**RURAL AVIATION – Z269  
FAIRBANKS  
(JBA)**

Equipment Operator Lead (J3/L)  
25-3554 LL 52

Maint. Spec Elect (J2)  
25-1583 LL 51

**GALENA  
(HYC)**

Equipment Operator (F1)  
25-1908 LL 51

Equipment Operator (J2)  
25-1909 LL 53

**DEPARTMENT OF TRANSPORTATION & PUBLIC FACILITIES  
HIGHWAYS, AVIATION AND FACILITIES (408)  
NORTHERN REGION HIGHWAYS & AVIATION (2068)  
FY2022 GOVERNOR'S BUDGET  
TOK DISTRICT, CHART 1C**

Eng/Arch IV  
25-1914 SS 26

**TOK  
(HEB)**

Tok M&O Superintendent  
25-1901 SS 21

Admin Assistant III  
25-1904 GP 15

Admin Assist I  
25-3489 GP 12

**DELTA  
(JJB)**

Equipment Operator (F1)  
25-1947 LL 51

Equipment Operator (J2)  
25-1948 LL 53

Equipment Operator (J2)  
25-1949 LL 53

Equipment Operator (J2)  
25-1950 LL 53

Equipment Operator (J2)  
25-1951 LL 53

Equipment Operator (J2)  
25-1975 LL 53

Equipment Operator (J2)  
25-2199 LL 53

Equipment Operator (J1)  
25-1938(s) LL 54

Equipment Operator (SJ2)  
25-1967(s) LL 56

**NORTHWAY  
(HEC)**

Equipment Operator (J3/L)  
25-2002 LL 52

Equipment Operator (J2)  
25-2005 LL 53

Equipment Operator (J2)  
25-2021 LL 53

Equipment Operator (J2)  
25-3674 LL 53

Equipment Operator (J1/J2)  
25-2003(s) LL 54/53

**EAGLE (JKA)**

Equipment Operator (J3/L)  
25-2013 LL 52

Equipment Operator (J1/J2)  
25-2012(s) LL 54/53

Equipment Operator (J2)  
25-2014(s) LL 53

**SOUTH FORK  
(JKF)**

Equipment Operator (J3L)  
25-1983(s) LL 52

Equipment Operator (J1/J2)  
25-2009(s) LL 54/53

Equipment Operator (J2)  
25-2010(s) LL 53

Equipment Operator (J2)  
25-2011(s) LL 53

**KEY:**

- F1 – Foremen I
- F2 – Foremen II
- J1 – Journey I
- J2 – Journey II
- J3/L – Journey III/Lead
- SJ1 – Sub-Journey I
- SJII – Sub-Journey II
- L – Lead
- S – PPT/SACL

\*All PCNs PFT unless otherwise designated  
\*\*(s) designates PPT/seasonal

**TOK  
(HEB)**

Equipment Operator (F1)  
25-1957 LL 51

Equipment Operator (J2)  
25-1958 LL 53

Equipment Operator (J2)  
25-1962 LL 53

Equipment Operator (J2)  
25-1977 LL 53

Equipment Operator (J2)  
25-1992 LL 53

Equipment Operator (J2)  
25-2089 LL 53

Equipment Operator (J2)  
25-1959(s) LL 53

Equipment Operator (J1/J2)  
25-3523(s) LL 54/53

Equipment Operator (J1)  
25-1966(s) LL 54

Equipment Operator (SJ2)  
25-1994(s) LL 56

**TRIMMS  
CAMP (HHH)**

Equipment Operator (J3/L)  
25-3428 LL 52

Equipment Operator (J2)  
25-1911 LL 53

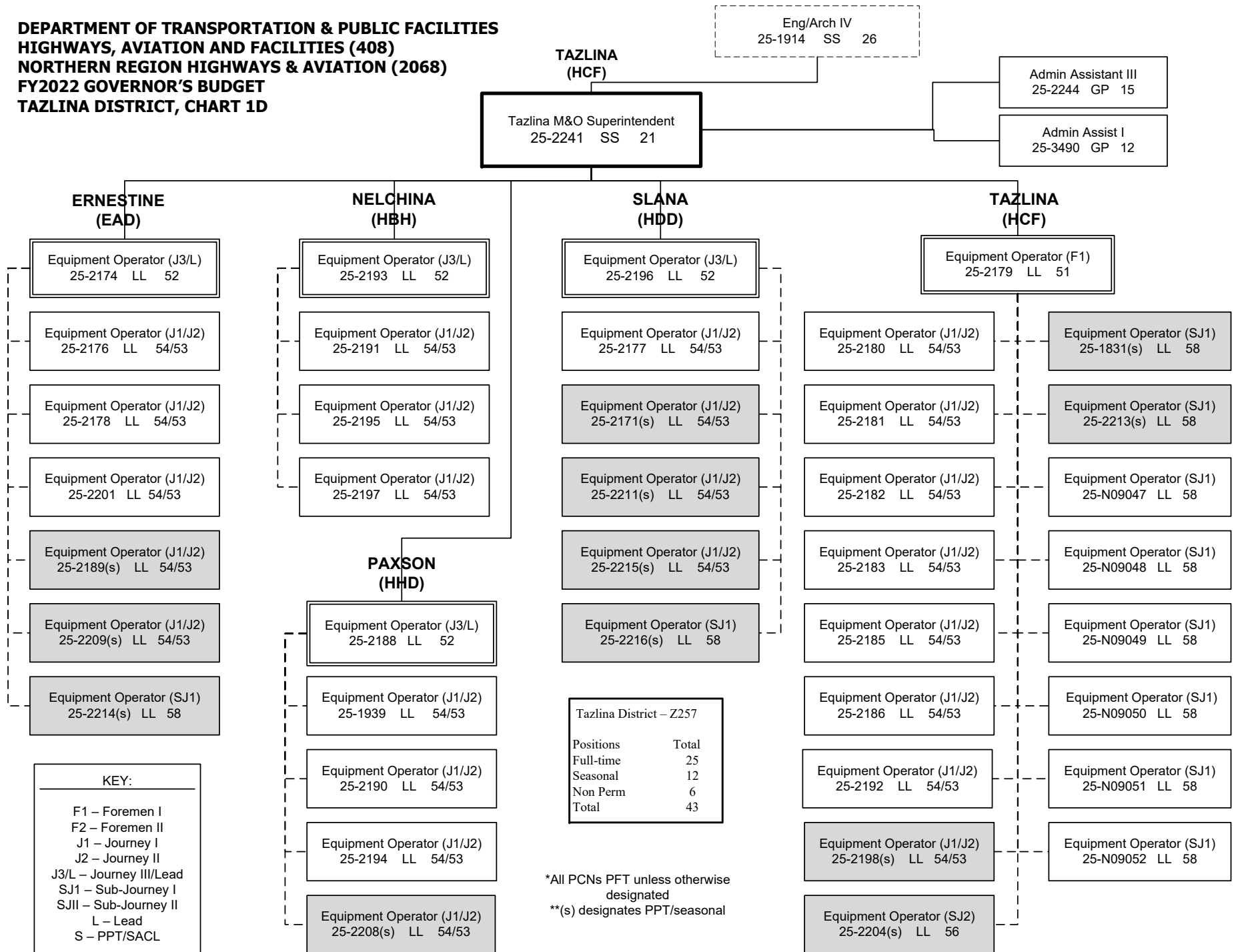
Equipment Operator (J2)  
25-2083(s) LL 53

Equipment Operator (J2)  
25-2085(s) LL 53

Tok District – Z254

Positions	Total
Full-time	23
Seasonal	15
Non Perm	0
<b>Total</b>	<b>38</b>

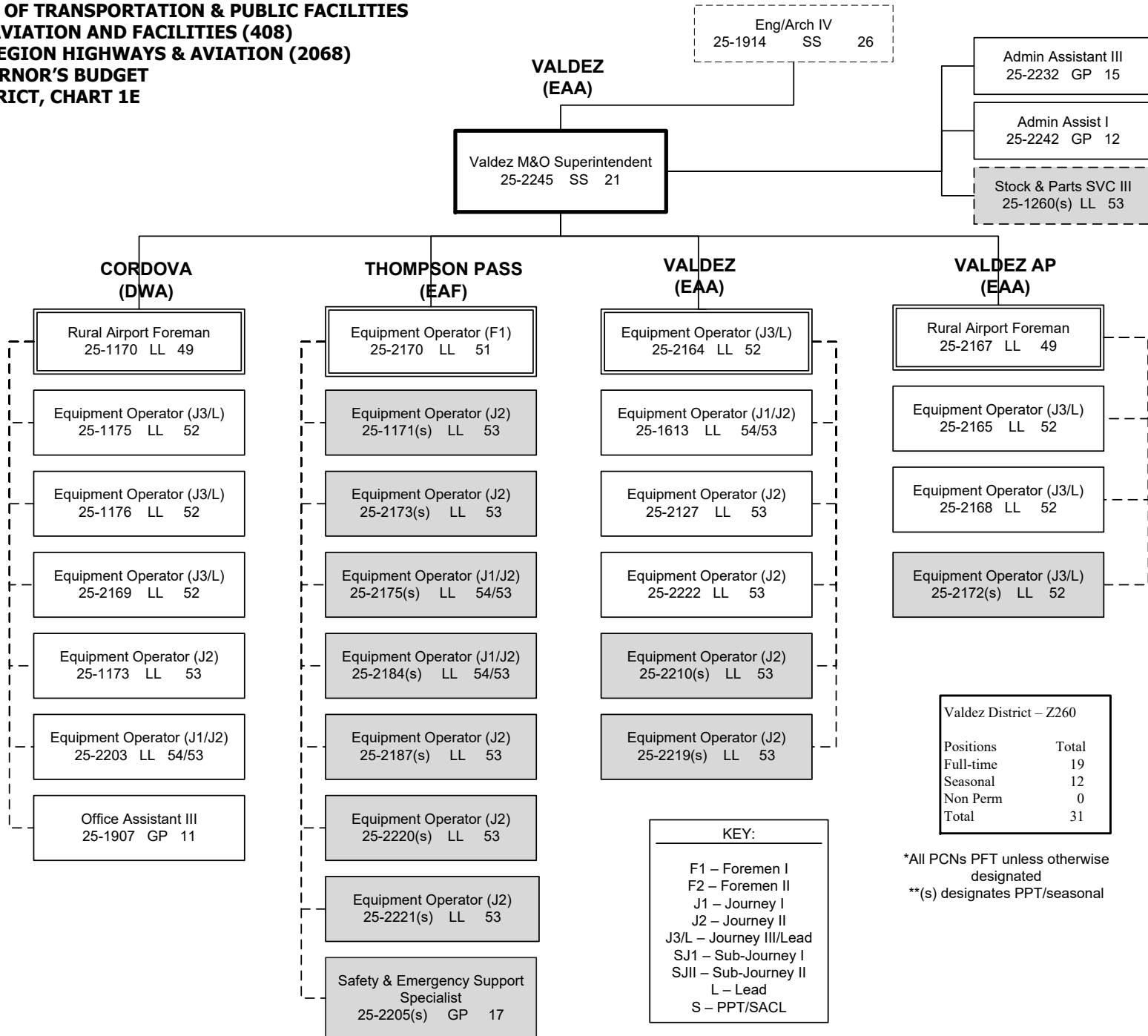
**DEPARTMENT OF TRANSPORTATION & PUBLIC FACILITIES  
HIGHWAYS, AVIATION AND FACILITIES (408)  
NORTHERN REGION HIGHWAYS & AVIATION (2068)  
FY2022 GOVERNOR'S BUDGET  
TAZLINA DISTRICT, CHART 1D**



\*All PCNs PFT unless otherwise designated  
\*\*(s) designates PPT/seasonal



**DEPARTMENT OF TRANSPORTATION & PUBLIC FACILITIES  
HIGHWAYS, AVIATION AND FACILITIES (408)  
NORTHERN REGION HIGHWAYS & AVIATION (2068)  
FY2022 GOVERNOR'S BUDGET  
VALDEZ DISTRICT, CHART 1E**



Valdez District – Z260

Positions	Total
Full-time	19
Seasonal	12
Non Perm	0
<b>Total</b>	<b>31</b>

\*All PCNs PFT unless otherwise designated  
\*\*(s) designates PPT/seasonal

**KEY:**

- F1 – Foremen I
- F2 – Foremen II
- J1 – Journey I
- J2 – Journey II
- J3/L – Journey III/Lead
- SJ1 – Sub-Journey I
- SJII – Sub-Journey II
- L – Lead
- S – PPT/SACL

**DEPARTMENT OF TRANSPORTATION & PUBLIC FACILITIES  
HIGHWAYS, AVIATION AND FACILITIES (408)  
NORTHERN REGION HIGHWAYS & AVIATION (2068)  
FY2022 GOVERNOR'S BUDGET  
DALTON DISTRICT, CHART 2**

Eng/Arch IV  
25-1914 SS 26

FAIRBANKS  
(JBA)

FAIRBANKS  
(JBA)

Admin Assistant III  
25-2073 GP 15

Admin Assist I  
25-2117 GP 12

Dalton M&O Superintendent  
25-1903 SS 21

Equip Operator (F1)  
25-2041 LL 51

Equip Operator (F1)  
25-3661 LL 51

**FBKS/DALTON  
ROVING (JCN)**

Equip Operator (J1/J2)  
25-2026 LL 54/53

Equip Operator (J1/J2)  
25-2038 LL 54/53

Equip Operator (J1/J2)  
25-2045 LL 54/53

Equip Operator (J1/J2)  
25-3662 LL 54/53

Equip Operator (J1/J2)  
25-3672 LL 54/53

Equip Operator (SJ2)  
25-N11047 LL 56

Equip Operator (SJ2)  
25-N11048 LL 56

Equip Operator (SJ2)  
25-N11049 LL 56

Equip Operator (SJ2)  
25-N11050 LL 56

Equip Operator (SJ2)  
25-N11064 LL 56

Equip Operator (SJ2)  
25-N11065 LL 56

Equip Operator (SJ2)  
25-N11066 LL 56

**LIVENGOOD  
(JQA)**

Equip Operator(J3/L)  
25-1980 LL 52

Equip Operator (J1/J2)  
25-1981 LL 54/53

Equip Operator (J1/J2)  
25-1985 LL 54/53

Equip Operator (J1/J2)  
25-2008 LL 54/53

Equip Operator (J1/J2)  
25-2060 LL 54/53

Equip Operator (J1/J2)  
25-3669 LL 54/53

Dalton District – Z263	
Positions	Total
Full-time	63
Seasonal	2
Non Perm	8
Total	73

**JIM RIVER  
(KEE)**

Equip Operator (J3/L)  
25-2032 LL 52

Equip Operator (J1/J2)  
25-2053 LL 54/53

Equip Operator (J1/J2)  
25-2058 LL 54/53

Equip Operator (J1/J2)  
25-2066 LL 54/53

Equip Operator (SJ2/J1)  
25-2055 LL 56/54

**MANLEY (JRC)**

Equip Operator (J3/L)  
25-1982 LL 52

Equip Operator (J1/J2)  
25-1960 LL 54/53

Equip Operator (J1/J2)  
25-1969 LL 54/53

Equip Operator (J1/J2)  
25-1971 LL 54/53

Equip Operator (SJ2/J1)  
25-2050 LL 56/54

**COLDFOOT  
(KRB)**

Equip Operator (J3/L)  
25-2034 LL 52

Equip Operator (J1/J2)  
25-2042 LL 54/53

Equip Operator (J1/J2)  
25-3668 LL 54/53

Equip Operator (J1/J2)  
25-2086(s) LL 54/53

**SEVEN MILE  
(JQG)**

Equip Operator (J3/L)  
25-2030 LL 52

Equip Operator (J1/J2)  
25-2031 LL 54/53

Equip Operator (J1/J2)  
25-2065 LL 54/53

Equip Operator (J1/J2)  
25-2091 LL 54/53

Equip Operator (SJ2/J1)  
25-2059 LL 56/54

Equip Operator (SJ2/J1)  
25-2080 LL 56/54

**CHANDALAR  
(LEA)**

Equip Operator (J3/L)  
25-2028 LL 52

Equip Operator (J1/J2)  
25-2051 LL 54/53

Equip Operator (J1/J2)  
25-2062 LL 54/53

Equip Operator (J1/J2)  
25-2070 LL 54/53

Equip Operator (J1/J2)  
25-2090 LL 54/53

Equip Operator (J1/J2)  
25-3664 LL 54/53

Equip Operator (J1/J2)  
25-2036(s) LL 54/53

Equip Operator (SJ2/J1)  
25-2206 LL 56/54

**SAG RIVER  
(LED)**

Equip Operator (J3/L)  
25-2029 LL 52

Equip Operator (J1/J2)  
25-2035 LL 54/53

Equip Operator (J1/J2)  
25-2040 LL 54/53

Equip Operator (J1/J2)  
25-2057 LL 54/53

Equip Operator (SJ2/J1)  
25-2019 LL 56/54

Equip Operator (SJ2/J1)  
25-2069 LL 56/54

**KEY:**

- F1 – Foremen I
- F2 – Foremen II
- J1 – Journey I
- J2 – Journey II
- J3/L – Journey III/Lead
- SJ1 – Sub-Journey I
- SJII – Sub-Journey II
- L – Lead
- S – PPT/SACL

\*All PCNs PFT unless otherwise designated

\*\*s) designates PPT/seasonal

**DEPARTMENT OF TRANSPORTATION & PUBLIC FACILITIES  
HIGHWAYS, AVIATION AND FACILITIES (408)  
NORTHERN REGION HIGHWAYS & AVIATION (2068)  
FY2022 GOVERNOR'S BUDGET  
DALTON DISTRICT, CHART 2B**

FAIRBANKS  
(JBA)

Dalton M&O Superintendent  
25-1903 SS 21

**BARROW  
(MEA)**

**DEADHORSE  
(MBC)**

Rural Airport Foreman  
25-3665 LL 49

Rural Airport Foreman  
25-2023 LL 49

(Work alternate  
workweeks)

Equip Op Foreman II  
25-3660 LL 50

Equip Op (J3/L)  
25-3356 LL 52

Maint Spec Electrician (J2)  
25-2006 LL 51

Equipment Operator (J3/L)  
25-2044 LL 52

(Work alternate  
workweeks)

Equip Op Foreman II  
25-2061 LL 50

Equip Op Foreman II  
25-3671 LL 50

Maint Spec Electrician (J2)  
25-2056 LL 51

Equipment Operator(J3/L)  
25-2046 LL 52

Equipment Operator (J3/L)  
25-1965 LL 52

Equipment Operator (J3/L)  
25-2047 LL 52

Equipment Operator (J3/L)  
25-2043 LL 52

Equipment Operator (J3/L)  
25-2064 LL 52

Equipment Operator (J3/L)  
25-2048 LL 52

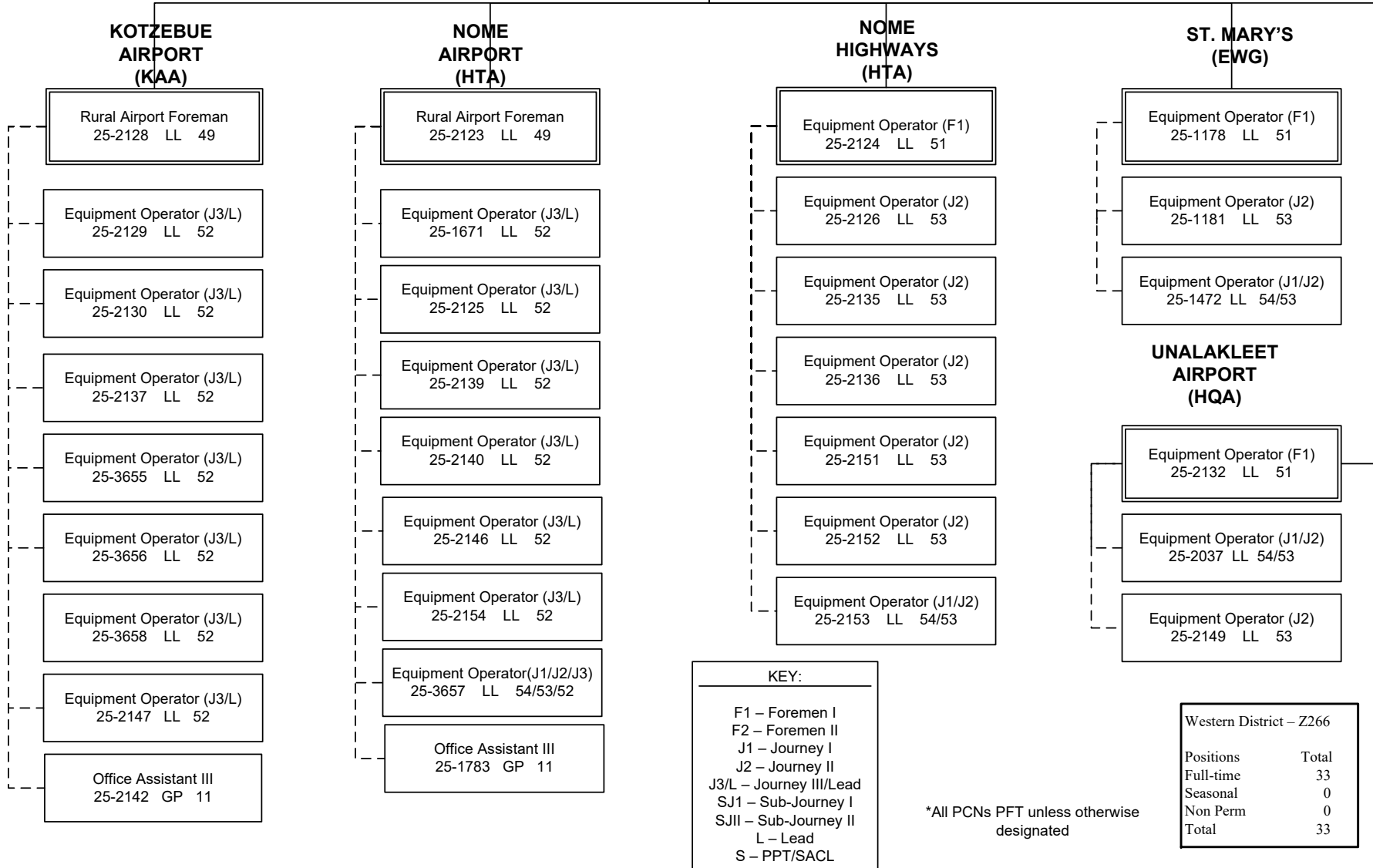
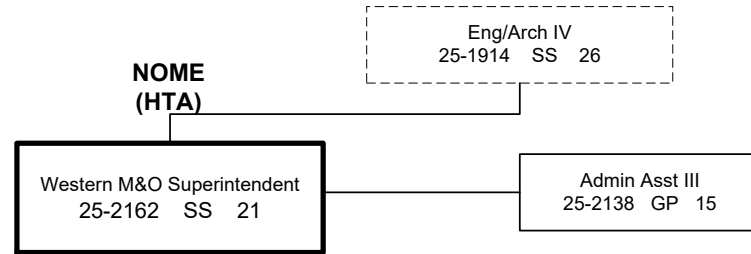
Equipment Operator (J3/L)  
25-3670 LL 52

Equipment Operator (J3/L)  
25-2068 LL 52

**KEY:**  
F1 – Foremen I  
F2 – Foremen II  
J1 – Journey I  
J2 – Journey II  
J3/L – Journey III/Lead  
SJ1 – Sub-Journey I  
SJII – Sub-Journey II  
L – Lead  
S – PPT/SACL

\*All PCNs PFT unless otherwise  
designated

**DEPARTMENT OF TRANSPORTATION & PUBLIC FACILITIES  
HIGHWAYS, AVIATION AND FACILITIES (408)  
NORTHERN REGION HIGHWAYS & AVIATION (2068)  
FY2022 GOVERNOR'S BUDGET  
WESTERN DISTRICT, CHART 3**



**KEY:**  
F1 – Foremen I  
F2 – Foremen II  
J1 – Journey I  
J2 – Journey II  
J3/L – Journey III/Lead  
SJ1 – Sub-Journey I  
SJII – Sub-Journey II  
L – Lead  
S – PPT/SACL

\*All PCNs PFT unless otherwise designated

Western District – Z266	
Positions	Total
Full-time	33
Seasonal	0
Non Perm	0
<b>Total</b>	<b>33</b>