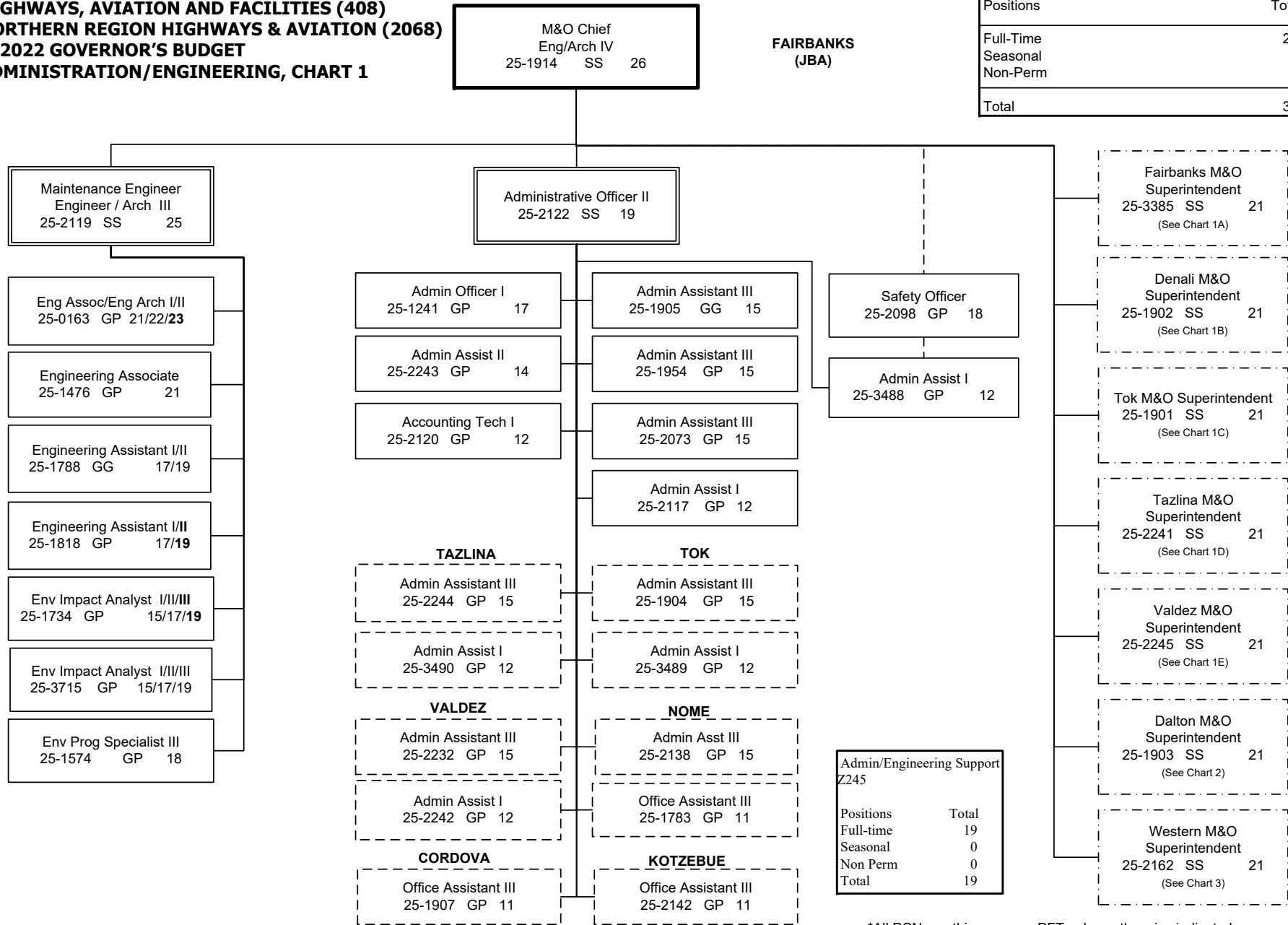


**DEPARTMENT OF TRANSPORTATION & PUBLIC FACILITIES  
HIGHWAYS, AVIATION AND FACILITIES (408)  
NORTHERN REGION HIGHWAYS & AVIATION (2068)  
FY2022 GOVERNOR'S BUDGET  
ADMINISTRATION/ENGINEERING, CHART 1**

NORTHERN REGION HIGHWAYS & AVIATION	
Positions	Total
Full-Time	249
Seasonal	51
Non-Perm	20
<b>Total</b>	<b>320</b>

**FAIRBANKS  
(JBA)**



\*All PCNs on this page are PFT unless otherwise indicated  
\*\*(s) designates PPT/seasonal

**DEPARTMENT OF TRANSPORTATION & PUBLIC FACILITIES  
HIGHWAYS, AVIATION AND FACILITIES (408)  
NORTHERN REGION HIGHWAYS & AVIATION (2068)  
FY2022 GOVERNOR'S BUDGET  
FAIRBANKS DISTRICT, CHART 1A**

Fairbanks District - Z248	
Positions	Total
Full-time	49
Seasonal(PPT)	3
Non Perm	3
<b>Total</b>	<b>55</b>

**FAIRBANKS  
(JBA)**

Eng/Arch IV  
25-1914 SS 26

Fairbanks M&O Superintendent  
25-3385 SS 21

Equipment Operator (F2)  
25-1919 LL 50

Admin Assistant III  
25-1905 GG 15

Accounting Tech I  
25-2120 GP 12

Stock & Part Svcs II  
25-1225 LL 55

**KEY:**

- F1 – Foremen I
- F2 – Foremen II
- J1 – Journey I
- J2 – Journey II
- J3/L – Journey III/Lead
- SJ1 – Sub-Journey I
- SJII – Sub-Journey II
- L – Lead
- S – PPT/SACL

Equipment Operator (F1)  
25-1927 LL 51

Equipment Operator (F1)  
25-1920 LL 51

Equipment Operator (F1)  
25-1929 LL 51

Equipment Operator (F1)  
25-1915 LL 51

Equipment Operator (SJ1)  
25-1940(s) LL 58

Equipment Operator (J3/L)  
25-3676 LL 52

Equipment Operator (J2)  
25-1458 LL 53

Equipment Operator (J2)  
25-1931 LL 53

Equipment Operator (J2)  
25-1924 LL 53

Equipment Operator (J2)  
25-1926 LL 53

Equipment Operator (SJ1)  
25-2074(s) LL 58

Equipment Operator (J1/J2)  
25-1934 LL 54/53

Equipment Operator (J2)  
25-1917 LL 53

Equipment Operator (J2)  
25-1936 LL 53

Equipment Operator (J2)  
25-1935 LL 53

Equipment Operator (J2)  
25-1937 LL 53

Equipment Operator (SJ1)  
25-N09042 LL 58

Equipment Operator (J1/J2)  
25-1964 LL 54/53

Equipment Operator (J2)  
25-1930 LL 53

Equipment Operator (J2)  
25-1941 LL 53

Equipment Operator (J2)  
25-1989 LL 53

Equipment Operator (J2)  
25-1979 LL 53

Equipment Operator (SJ1)  
25-N09043 LL 58

Equipment Operator (J1/J2)  
25-2049 LL 54/53

Equipment Operator (J2)  
25-2071 LL 53

Equipment Operator (J2)  
25-1943 LL 53

Equipment Operator (J1)  
25-1918 LL 54

Equipment Operator (J2)  
25-3663 LL 53

Equipment Operator (SJ1)  
25-N09044 LL 58

Equipment Operator (J1/J2)  
25-3673 LL 54/53

Equipment Operator (J1)  
25-1933 LL 54

Equipment Operator (J2)  
25-1986 LL 53

Equipment Operator (J1)  
25-1928 LL 54

Equipment Operator (J1)  
25-1944 LL 54

Equipment Operator (J1)  
25-1562 LL 54

Equipment Operator (J2)  
25-3437 LL 53

Equipment Operator (J1)  
25-1946 LL 54

Equipment Operator (J1)  
25-2072 LL 54

Equipment Operator (J1)  
25-2077 LL 54

Equipment Operator (J1)  
25-2022 LL 54

Equipment Operator (J1)  
25-1996 LL 54

Equipment Operator (J1)  
25-2079 LL 54

Equipment Operator (J1)  
25-2081 LL 54

Equip Operator (SJ2/J1)  
25-2017 LL 56/54

Equip Operator (SJ2/J1)  
25-1681 LL 56/54

Equipment Operator (J1)  
25-1973(s) LL 54

**TRAFFIC**

Maint Spec TCES(F1)  
25-2075 LL 50

Maint Spec TCES (J2)  
25-1916 LL 51

Maint Spec TCES (J2)  
25-1968 LL 51

**SIGNS**

Equipment Operator (J2)  
25-1670 LL 53

Equipment Operator (J2)  
25-2088 LL 53

**MONTANA CREEK  
(JME)**

\*All PCNs are PFT unless otherwise designated  
\*\*(s) Designates PPT/seasonal position  
All positions are located in Fairbanks unless otherwise indicated

**DEPARTMENT OF TRANSPORTATION & PUBLIC FACILITIES  
HIGHWAYS, AVIATION AND FACILITIES (408)  
NORTHERN REGION HIGHWAYS & AVIATION (2068)  
FY2022 GOVERNOR'S BUDGET  
DENALI DISTRICT, CHART 1B**

**FAIRBANKS  
(JBA)**

Eng/Arch IV  
25-1914 SS 26

Denali M&O Superintendent  
25-1902 SS 21

Admin Assistant III  
25-1954 GP 15

**CANTWELL  
(HJI)**

Equipment Operator (F1)  
25-1952 LL 51

Equipment Operator (J1/J2)  
25-1921 LL 54/53

Equipment Operator (J1/J2)  
25-1991 LL 54/53

Equipment Operator (J1/J2)  
25-1999 LL 54/53

Equipment Operator (J1/J2)  
25-2000 LL 54/53

Equipment Operator (J1/J2)  
25-2001 LL 54/53

Equipment Operator (J2)  
25-2025(s) LL 53

Equipment Operator (J2)  
25-3610(s) LL 53

Equipment Operator (SJ1)  
25-1706(s) LL 58

**HEALY  
(HJA)**

Equipment Operator (J3/L)  
25-1995 LL 52

Equipment Operator (J2)  
25-1997 LL 53

Equipment Operator (J2)  
25-1998(s) LL 53

Equipment Operator (J1)  
25-1961(s) LL 54

Equipment Operator (SJ1)  
25-N16168 LL 58

**Denali District – Z251**

Positions	Total
Full-time	18
Seasonal	7
Non Perm	3
<b>Total</b>	<b>28</b>

\*All PCNs PFT unless otherwise designated

\*\* (s) designates PPT/seasonal

**NENANA  
(JBM)**

Equipment Operator (J3/L)  
25-1990 LL 52

Equipment Operator (J1/J2)  
25-1955 LL 54/53

Equipment Operator (J1/J2)  
25-1993 LL 54/53

Equipment Operator (J1/J2)  
25-2087 LL 54/53

Equipment Operator (J1)  
25-1942(s) LL 54

Equipment Operator (SJ2)  
25-2018(s) LL 56

**KEY:**

- F1 – Foremen I
- F2 – Foremen II
- J1 – Journey I
- J2 – Journey II
- J3/L – Journey III/Lead
- SJ1 – Sub-Journey I
- SJII – Sub-Journey II
- L – Lead
- S – PPT/SACL

**NR BRIDGE CREW -  
FAIRBANKS  
(JBA)**

Maint Specialist Foreman  
25-1932 LL 50

Equipment Operator (SJ1)  
25-N09041 LL 58

Equipment Operator (SJ1)  
25-N09040 LL 58

**RURAL AVIATION – Z269  
FAIRBANKS  
(JBA)**

Equipment Operator Lead (J3/L)  
25-3554 LL 52

Maint. Spec Elect (J2)  
25-1583 LL 51

**GALENA  
(HYC)**

Equipment Operator (F1)  
25-1908 LL 51

Equipment Operator (J2)  
25-1909 LL 53

**DEPARTMENT OF TRANSPORTATION & PUBLIC FACILITIES  
HIGHWAYS, AVIATION AND FACILITIES (408)  
NORTHERN REGION HIGHWAYS & AVIATION (2068)  
FY2022 GOVERNOR'S BUDGET  
TOK DISTRICT, CHART 1C**

Eng/Arch IV  
25-1914 SS 26

**TOK  
(HEB)**

Tok M&O Superintendent  
25-1901 SS 21

Admin Assistant III  
25-1904 GP 15

Admin Assist I  
25-3489 GP 12

**DELTA  
(JJB)**

Equipment Operator (F1)  
25-1947 LL 51

Equipment Operator (J2)  
25-1948 LL 53

Equipment Operator (J2)  
25-1949 LL 53

Equipment Operator (J2)  
25-1950 LL 53

Equipment Operator (J2)  
25-1951 LL 53

Equipment Operator (J2)  
25-1975 LL 53

Equipment Operator (J2)  
25-2199 LL 53

Equipment Operator (J1)  
25-1938(s) LL 54

Equipment Operator (SJ2)  
25-1967(s) LL 56

**NORTHWAY  
(HEC)**

Equipment Operator (J3/L)  
25-2002 LL 52

Equipment Operator (J2)  
25-2005 LL 53

Equipment Operator (J2)  
25-2021 LL 53

Equipment Operator (J2)  
25-3674 LL 53

Equipment Operator (J1/J2)  
25-2003(s) LL 54/53

**EAGLE (JKA)**

Equipment Operator (J3/L)  
25-2013 LL 52

Equipment Operator (J1/J2)  
25-2012(s) LL 54/53

Equipment Operator (J2)  
25-2014(s) LL 53

**SOUTH FORK  
(JKF)**

Equipment Operator (J3L)  
25-1983(s) LL 52

Equipment Operator (J1/J2)  
25-2009(s) LL 54/53

Equipment Operator (J2)  
25-2010(s) LL 53

Equipment Operator (J2)  
25-2011(s) LL 53

**KEY:**

- F1 – Foremen I
- F2 – Foremen II
- J1 – Journey I
- J2 – Journey II
- J3/L – Journey III/Lead
- SJ1 – Sub-Journey I
- SJII – Sub-Journey II
- L – Lead
- S – PPT/SACL

\*All PCNs PFT unless otherwise designated  
\*\*(s) designates PPT/seasonal

**TOK  
(HEB)**

Equipment Operator (F1)  
25-1957 LL 51

Equipment Operator (J2)  
25-1958 LL 53

Equipment Operator (J2)  
25-1962 LL 53

Equipment Operator (J2)  
25-1977 LL 53

Equipment Operator (J2)  
25-1992 LL 53

Equipment Operator (J2)  
25-2089 LL 53

Equipment Operator (J2)  
25-1959(s) LL 53

Equipment Operator (J1/J2)  
25-3523(s) LL 54/53

Equipment Operator (J1)  
25-1966(s) LL 54

Equipment Operator (SJ2)  
25-1994(s) LL 56

**TRIMMS  
CAMP (HHH)**

Equipment Operator (J3/L)  
25-3428 LL 52

Equipment Operator (J2)  
25-1911 LL 53

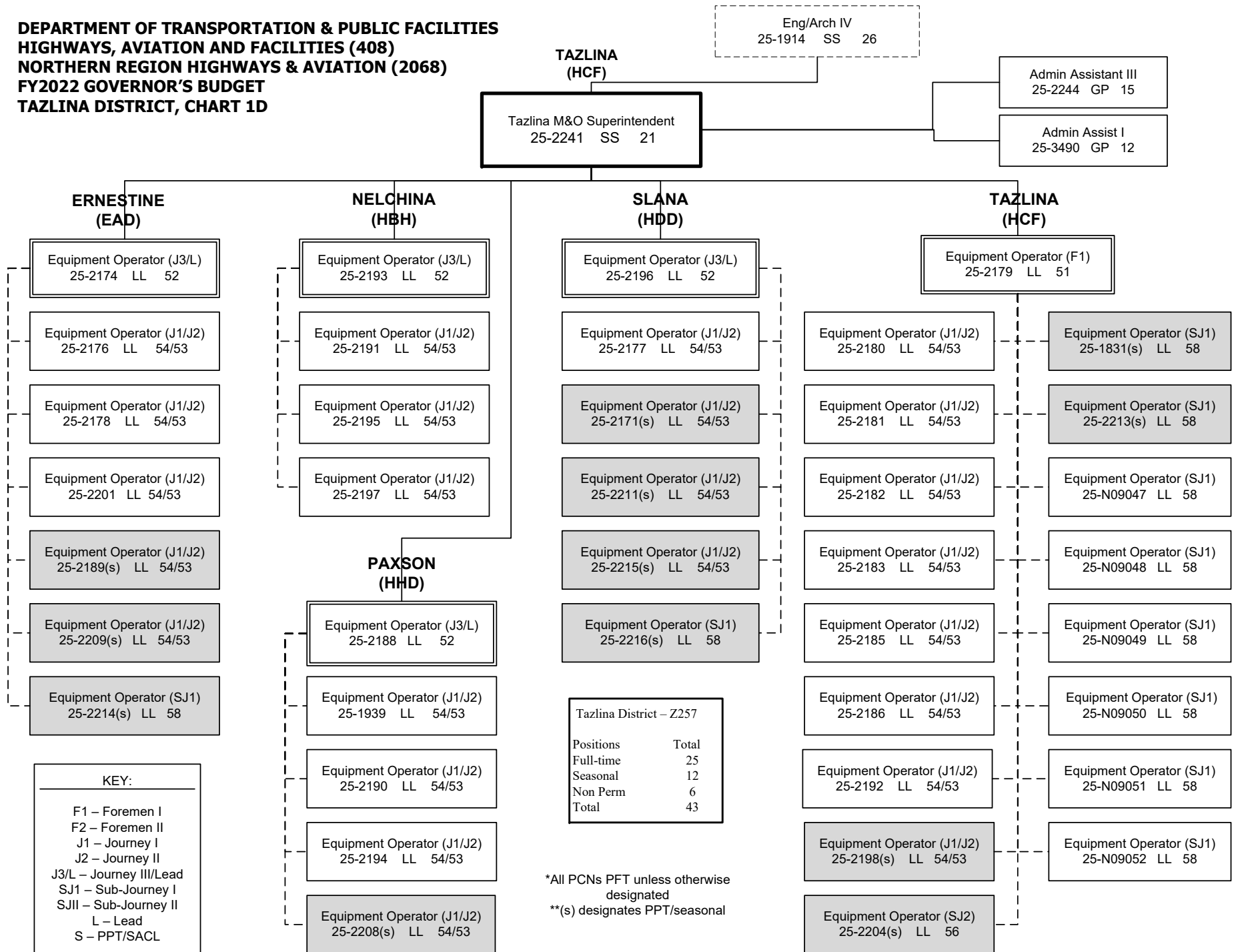
Equipment Operator (J2)  
25-2083(s) LL 53

Equipment Operator (J2)  
25-2085(s) LL 53

Tok District – Z254

Positions	Total
Full-time	23
Seasonal	15
Non Perm	0
<b>Total</b>	<b>38</b>

**DEPARTMENT OF TRANSPORTATION & PUBLIC FACILITIES  
HIGHWAYS, AVIATION AND FACILITIES (408)  
NORTHERN REGION HIGHWAYS & AVIATION (2068)  
FY2022 GOVERNOR'S BUDGET  
TAZLINA DISTRICT, CHART 1D**



Tazlina District – Z257

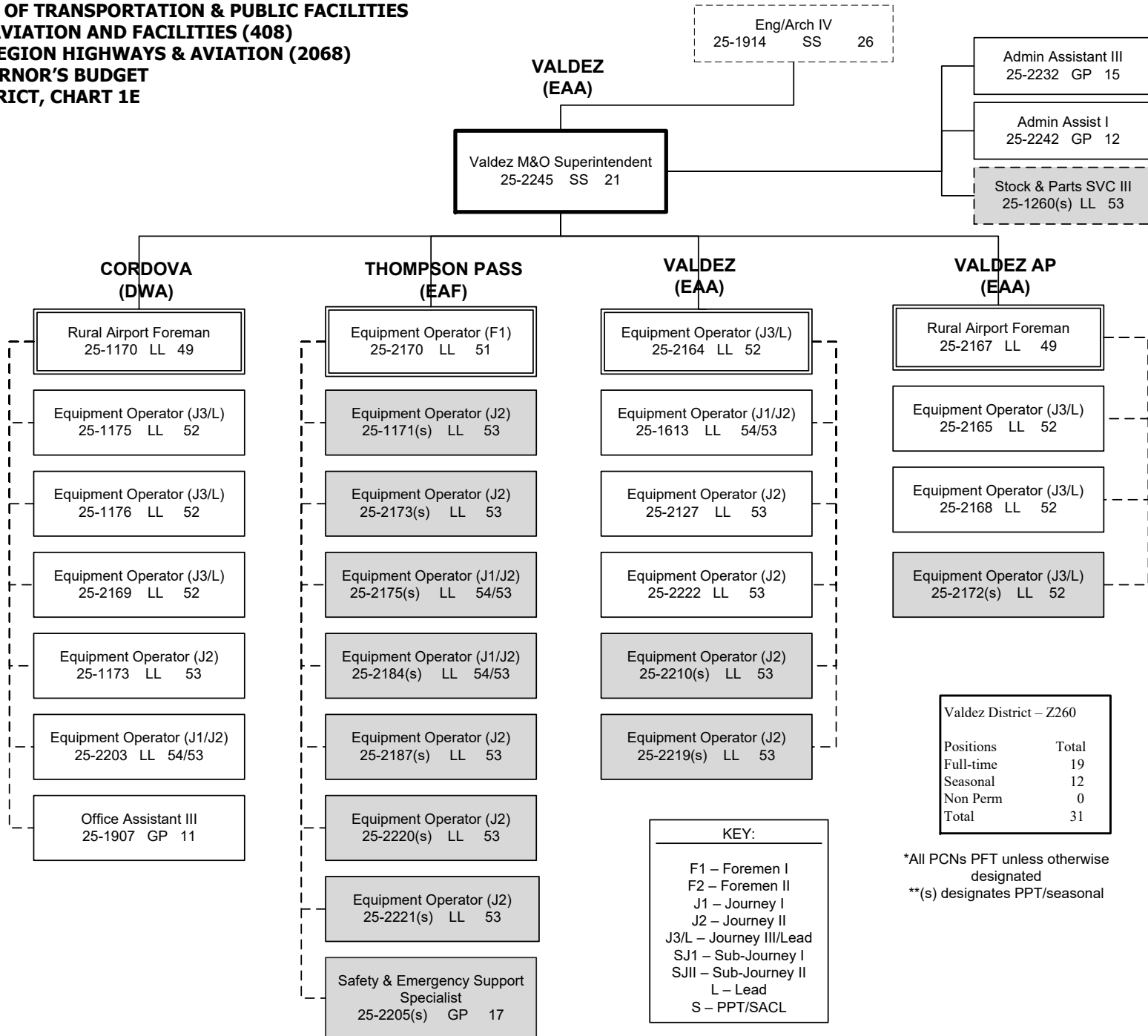
Positions	Total
Full-time	25
Seasonal	12
Non Perm	6
<b>Total</b>	<b>43</b>

\*All PCNs PFT unless otherwise designated  
\*\*(s) designates PPT/seasonal

**KEY:**

- F1 – Foremen I
- F2 – Foremen II
- J1 – Journey I
- J2 – Journey II
- J3/L – Journey III/Lead
- SJ1 – Sub-Journey I
- SJII – Sub-Journey II
- L – Lead
- S – PPT/SACL

**DEPARTMENT OF TRANSPORTATION & PUBLIC FACILITIES  
HIGHWAYS, AVIATION AND FACILITIES (408)  
NORTHERN REGION HIGHWAYS & AVIATION (2068)  
FY2022 GOVERNOR'S BUDGET  
VALDEZ DISTRICT, CHART 1E**



Valdez District – Z260	
Positions	Total
Full-time	19
Seasonal	12
Non Perm	0
<b>Total</b>	<b>31</b>

\*All PCNs PFT unless otherwise designated  
\*\*(s) designates PPT/seasonal

**KEY:**  
F1 – Foremen I  
F2 – Foremen II  
J1 – Journey I  
J2 – Journey II  
J3/L – Journey III/Lead  
SJ1 – Sub-Journey I  
SJII – Sub-Journey II  
L – Lead  
S – PPT/SACL

**DEPARTMENT OF TRANSPORTATION & PUBLIC FACILITIES  
HIGHWAYS, AVIATION AND FACILITIES (408)  
NORTHERN REGION HIGHWAYS & AVIATION (2068)  
FY2022 GOVERNOR'S BUDGET  
DALTON DISTRICT, CHART 2**

Eng/Arch IV  
25-1914 SS 26

FAIRBANKS  
(JBA)

FAIRBANKS  
(JBA)

Admin Assistant III  
25-2073 GP 15

Admin Assist I  
25-2117 GP 12

Dalton M&O Superintendent  
25-1903 SS 21

Equip Operator (F1)  
25-2041 LL 51

Equip Operator (F1)  
25-3661 LL 51

**FBKS/DALTON  
ROVING (JCN)**

Equip Operator (J1/J2)  
25-2026 LL 54/53

Equip Operator (J1/J2)  
25-2038 LL 54/53

Equip Operator (J1/J2)  
25-2045 LL 54/53

Equip Operator (J1/J2)  
25-3662 LL 54/53

Equip Operator (J1/J2)  
25-3672 LL 54/53

Equip Operator (SJ2)  
25-N11047 LL 56

Equip Operator (SJ2)  
25-N11048 LL 56

Equip Operator (SJ2)  
25-N11049 LL 56

Equip Operator (SJ2)  
25-N11050 LL 56

Equip Operator (SJ2)  
25-N11064 LL 56

Equip Operator (SJ2)  
25-N11065 LL 56

Equip Operator (SJ2)  
25-N11066 LL 56

Equip Operator (SJ2)  
25-N11067 LL 56

**LIVENGOOD  
(JQA)**

Equip Operator(J3/L)  
25-1980 LL 52

Equip Operator (J1/J2)  
25-1981 LL 54/53

Equip Operator (J1/J2)  
25-1985 LL 54/53

Equip Operator (J1/J2)  
25-2008 LL 54/53

Equip Operator (J1/J2)  
25-2060 LL 54/53

Equip Operator (J1/J2)  
25-3669 LL 54/53

Dalton District – Z263	
Positions	Total
Full-time	63
Seasonal	2
Non Perm	8
Total	73

**JIM RIVER  
(KEE)**

Equip Operator (J3/L)  
25-2032 LL 52

Equip Operator (J1/J2)  
25-2053 LL 54/53

Equip Operator (J1/J2)  
25-2058 LL 54/53

Equip Operator (J1/J2)  
25-2066 LL 54/53

Equip Operator (SJ2/J1)  
25-2055 LL 56/54

**MANLEY (JRC)**

Equip Operator (J3/L)  
25-1982 LL 52

Equip Operator (J1/J2)  
25-1960 LL 54/53

Equip Operator (J1/J2)  
25-1969 LL 54/53

Equip Operator (J1/J2)  
25-1971 LL 54/53

Equip Operator (SJ2/J1)  
25-2050 LL 56/54

**COLDFOOT  
(KRB)**

Equip Operator (J3/L)  
25-2034 LL 52

Equip Operator (J1/J2)  
25-2042 LL 54/53

Equip Operator (J1/J2)  
25-3668 LL 54/53

Equip Operator (J1/J2)  
25-2086(s) LL 54/53

**SEVEN MILE  
(JQG)**

Equip Operator (J3/L)  
25-2030 LL 52

Equip Operator (J1/J2)  
25-2031 LL 54/53

Equip Operator (J1/J2)  
25-2065 LL 54/53

Equip Operator (J1/J2)  
25-2091 LL 54/53

Equip Operator (SJ2/J1)  
25-2059 LL 56/54

Equip Operator (SJ2/J1)  
25-2080 LL 56/54

**CHANDALAR  
(LEA)**

Equip Operator (J3/L)  
25-2028 LL 52

Equip Operator (J1/J2)  
25-2051 LL 54/53

Equip Operator (J1/J2)  
25-2062 LL 54/53

Equip Operator (J1/J2)  
25-2070 LL 54/53

Equip Operator (J1/J2)  
25-2090 LL 54/53

Equip Operator (J1/J2)  
25-3664 LL 54/53

Equip Operator (J1/J2)  
25-2036(s) LL 54/53

Equip Operator (SJ2/J1)  
25-2206 LL 56/54

**SAG RIVER  
(LED)**

Equip Operator (J3/L)  
25-2029 LL 52

Equip Operator (J1/J2)  
25-2035 LL 54/53

Equip Operator (J1/J2)  
25-2040 LL 54/53

Equip Operator (J1/J2)  
25-2057 LL 54/53

Equip Operator (SJ2/J1)  
25-2019 LL 56/54

Equip Operator (SJ2/J1)  
25-2069 LL 56/54

**KEY:**

- F1 – Foremen I
- F2 – Foremen II
- J1 – Journey I
- J2 – Journey II
- J3/L – Journey III/Lead
- SJ1 – Sub-Journey I
- SJII – Sub-Journey II
- L – Lead
- S – PPT/SACL

\*All PCNs PFT unless otherwise designated

\*\*s) designates PPT/seasonal

**DEPARTMENT OF TRANSPORTATION & PUBLIC FACILITIES  
HIGHWAYS, AVIATION AND FACILITIES (408)  
NORTHERN REGION HIGHWAYS & AVIATION (2068)  
FY2022 GOVERNOR'S BUDGET  
DALTON DISTRICT, CHART 2B**

FAIRBANKS  
(JBA)

Dalton M&O Superintendent  
25-1903 SS 21

**BARROW  
(MEA)**

**DEADHORSE  
(MBC)**

Rural Airport Foreman  
25-3665 LL 49

Rural Airport Foreman  
25-2023 LL 49

(Work alternate  
workweeks)

Equip Op Foreman II  
25-3660 LL 50

Equip Op (J3/L)  
25-3356 LL 52

Maint Spec Electrician (J2)  
25-2006 LL 51

Equipment Operator (J3/L)  
25-2044 LL 52

(Work alternate  
workweeks)

Equip Op Foreman II  
25-2061 LL 50

Equip Op Foreman II  
25-3671 LL 50

Maint Spec Electrician (J2)  
25-2056 LL 51

Equipment Operator(J3/L)  
25-2046 LL 52

Equipment Operator (J3/L)  
25-1965 LL 52

Equipment Operator (J3/L)  
25-2047 LL 52

Equipment Operator (J3/L)  
25-2043 LL 52

Equipment Operator (J3/L)  
25-2064 LL 52

Equipment Operator (J3/L)  
25-2048 LL 52

Equipment Operator (J3/L)  
25-3670 LL 52

Equipment Operator (J3/L)  
25-2068 LL 52

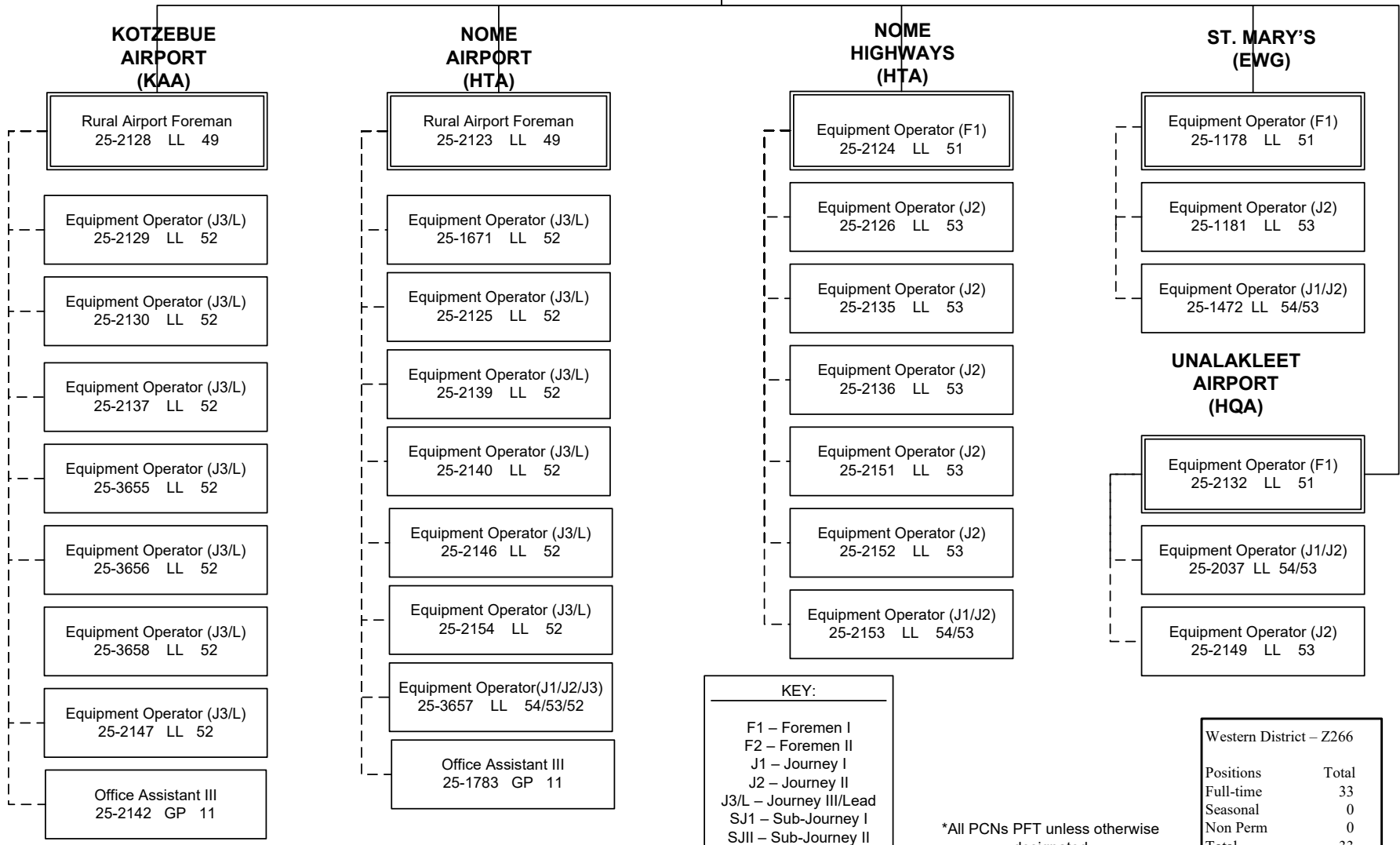
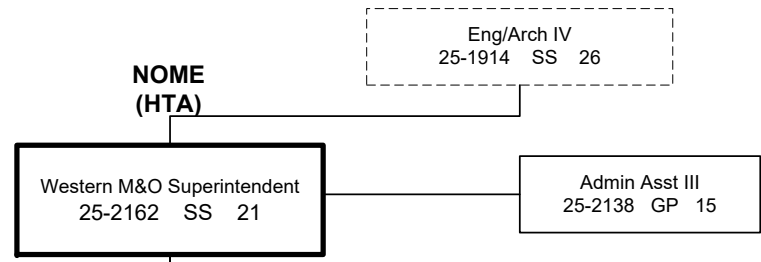
**KEY:**

- F1 – Foremen I
- F2 – Foremen II
- J1 – Journey I
- J2 – Journey II
- J3/L – Journey III/Lead
- SJ1 – Sub-Journey I
- SJII – Sub-Journey II
- L – Lead
- S – PPT/SACL

\*All PCNs PFT unless otherwise designated



**DEPARTMENT OF TRANSPORTATION & PUBLIC FACILITIES  
HIGHWAYS, AVIATION AND FACILITIES (408)  
NORTHERN REGION HIGHWAYS & AVIATION (2068)  
FY2022 GOVERNOR'S BUDGET  
WESTERN DISTRICT, CHART 3**



**KEY:**  
F1 – Foremen I  
F2 – Foremen II  
J1 – Journey I  
J2 – Journey II  
J3/L – Journey III/Lead  
SJ1 – Sub-Journey I  
SJII – Sub-Journey II  
L – Lead  
S – PPT/SACL

\*All PCNs PFT unless otherwise designated

Western District – Z266	
Positions	Total
Full-time	33
Seasonal	0
Non Perm	0
<b>Total</b>	<b>33</b>