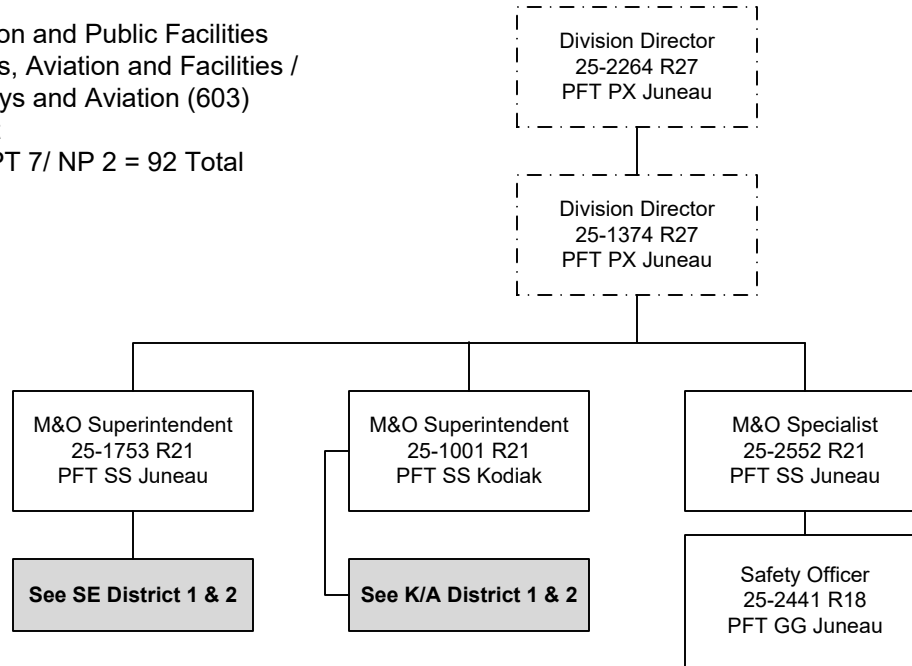


Department of Transportation and Public Facilities
RDU/Component: Highways, Aviation and Facilities /
Southcoast Region Highways and Aviation (603)
FY2022 Governor's Budget
Position Totals: PFT 83/ PPT 7/ NP 2 = 92 Total

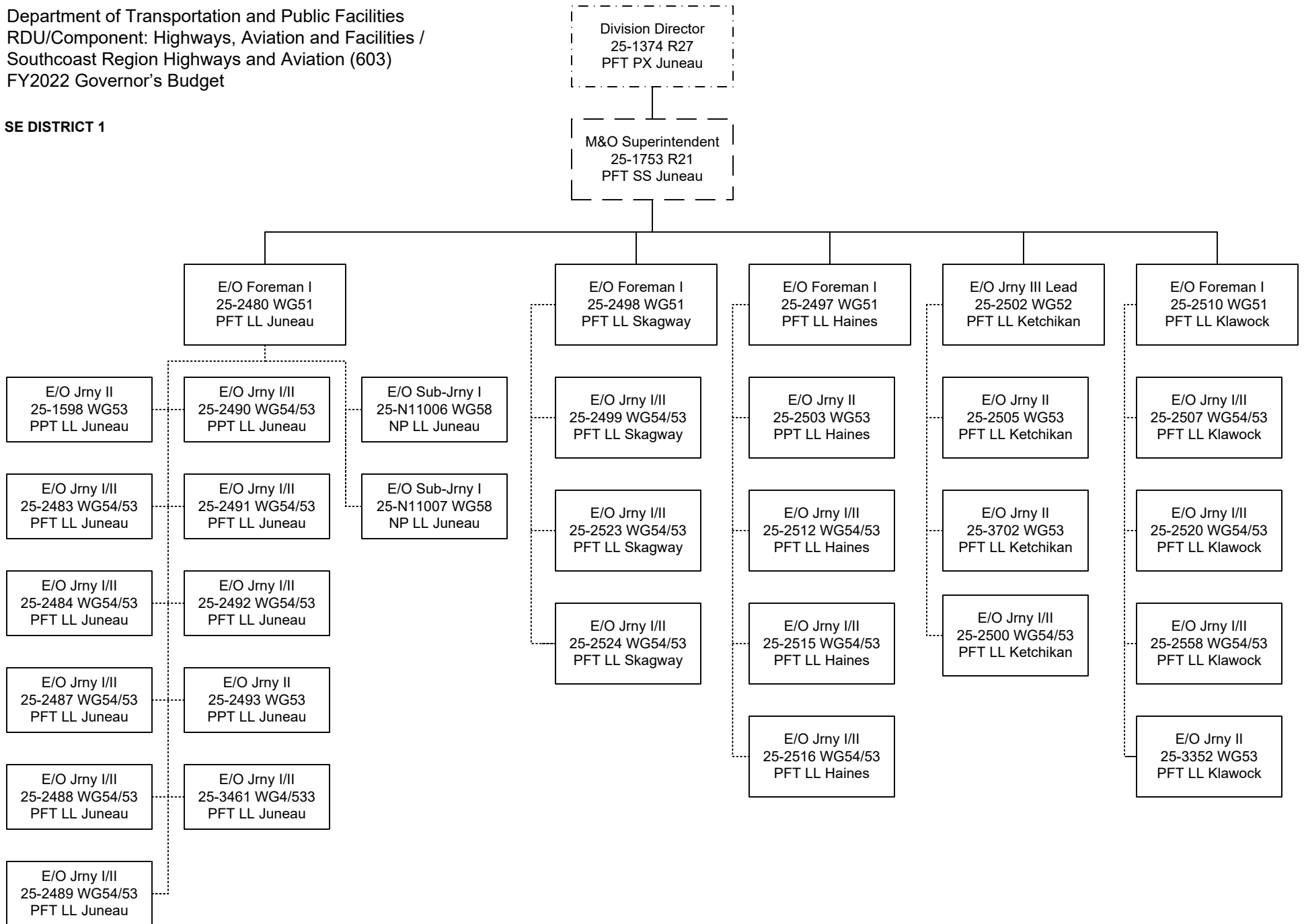


..... = Lead Authority

..... = **Budgeted in another component

Department of Transportation and Public Facilities
 RDU/Component: Highways, Aviation and Facilities /
 Southcoast Region Highways and Aviation (603)
 FY2022 Governor's Budget

SE DISTRICT 1

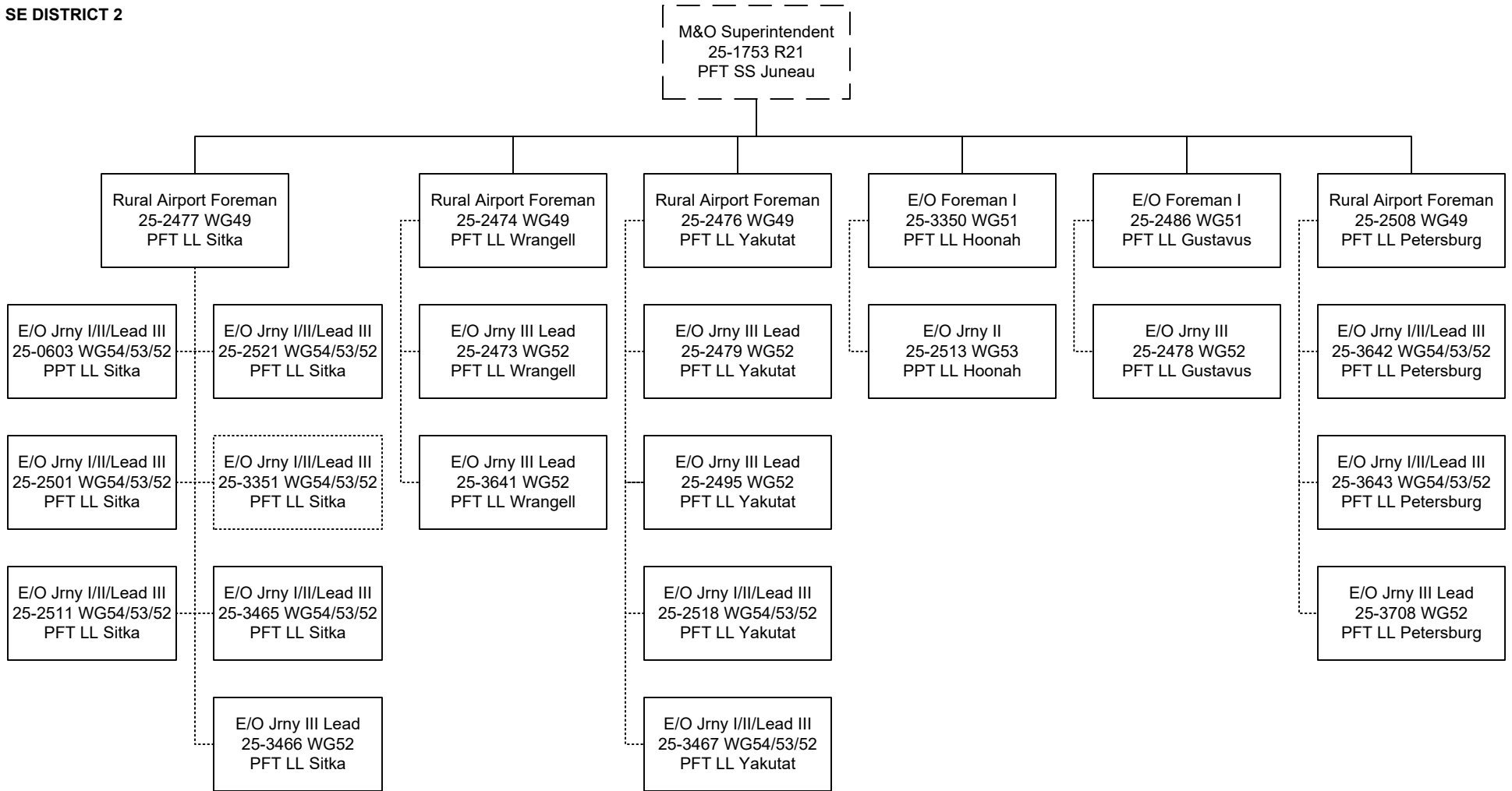


----- = Lead Authority

----- **Budgeted in another component

Department of Transportation and Public Facilities
 RDU/Component: Highways, Aviation and Facilities /
 Southcoast Region Highways and Aviation (603)
 FY2022 Governor's Budget

SE DISTRICT 2

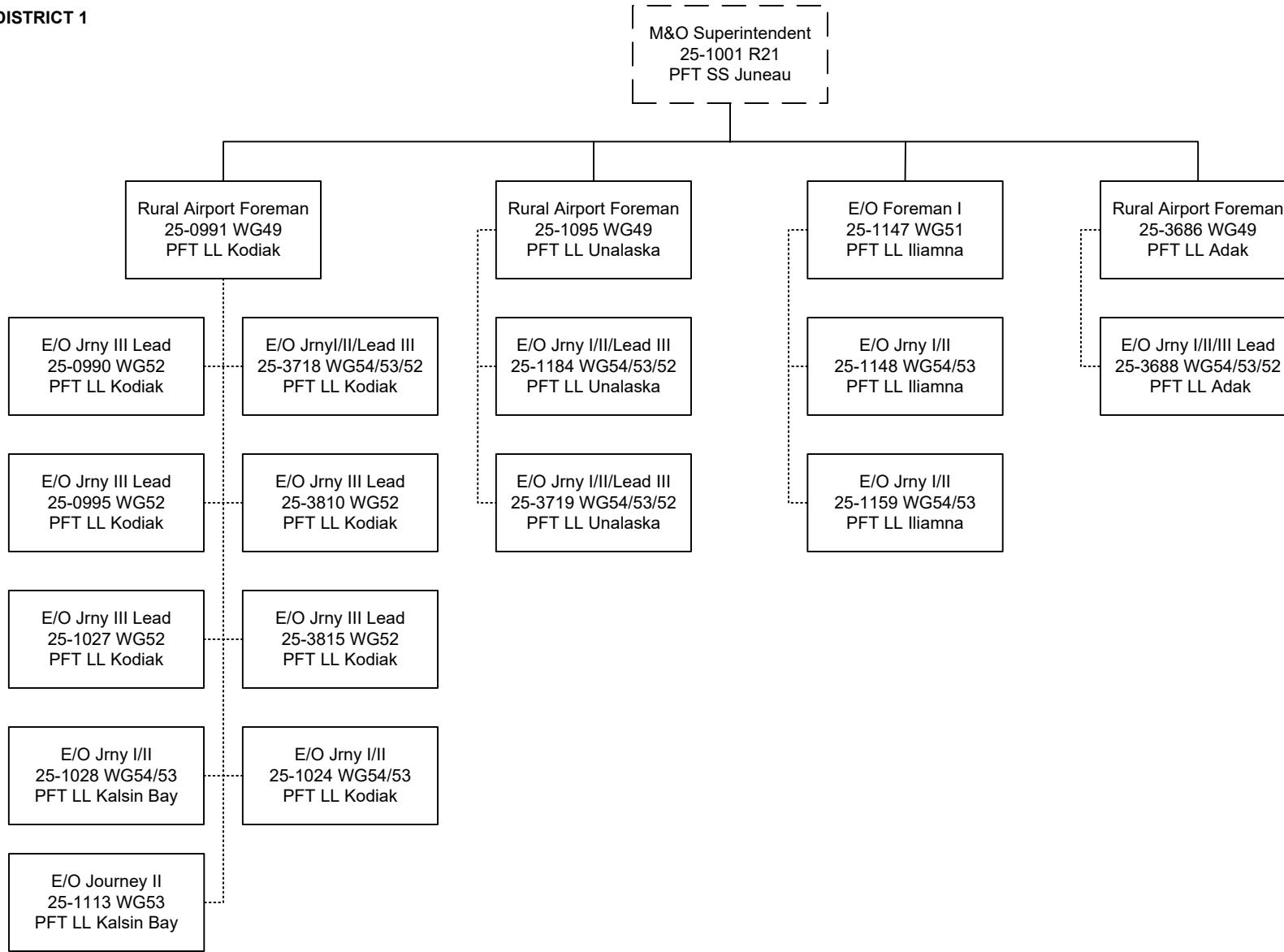


----- = Lead Authority

----- **Budgeted in another component

Department of Transportation and Public Facilities
 RDU/Component: Highways, Aviation and Facilities /
 Southcoast Region Highways and Aviation (603)
 FY2022 Governor's Budget

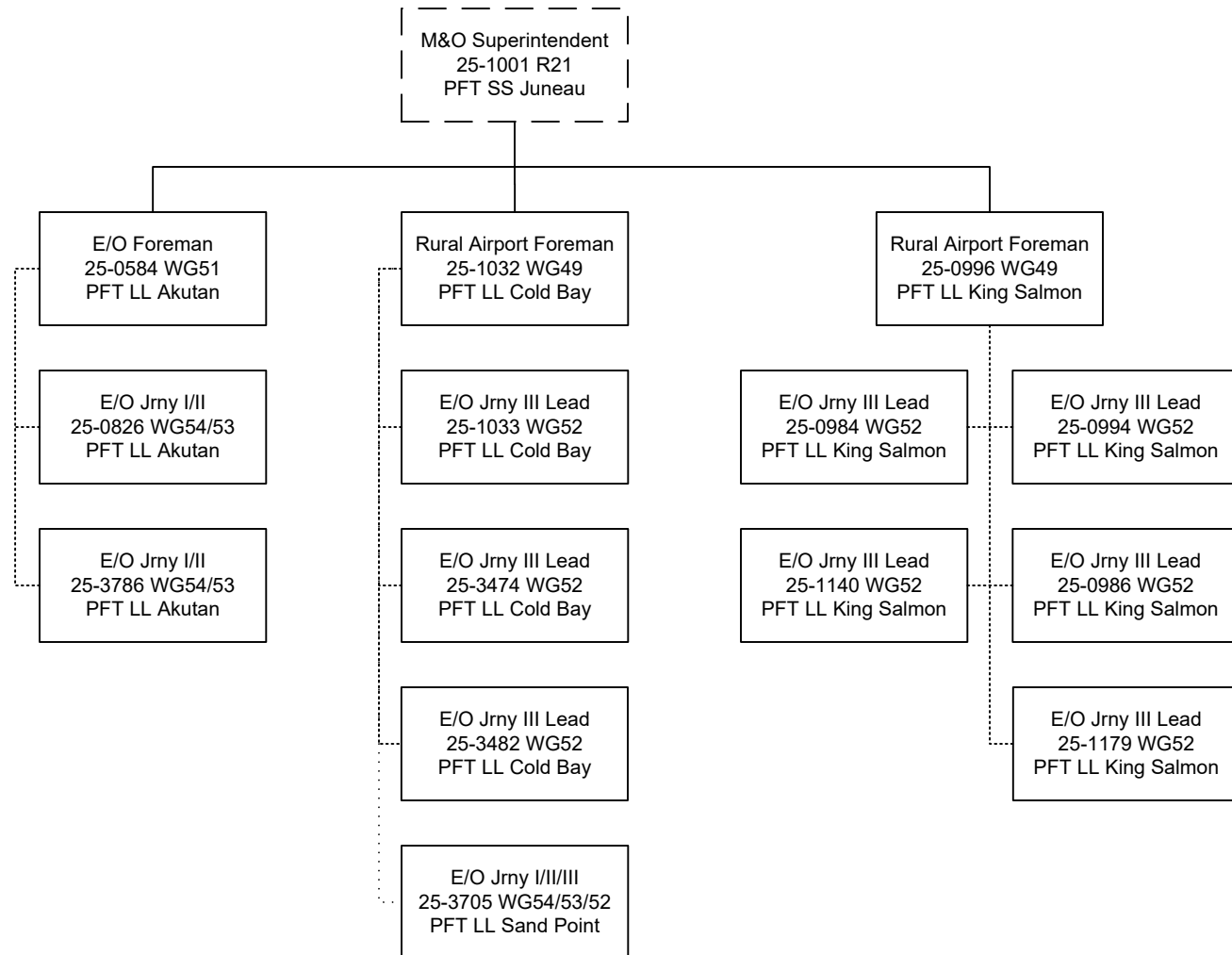
K/A DISTRICT 1



----- = Lead Authority

----- **Budgeted in another component

K/A DISTRICT 2



----- = Lead Authority

----- **Budgeted in another component