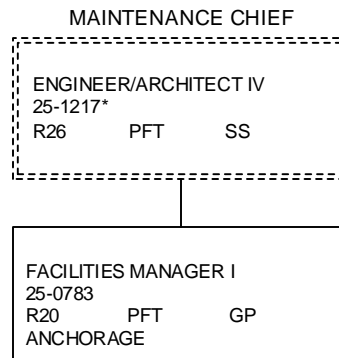


Department Of Transportation & Public Facilities
RDU: Highways, Aviation and Facilities (408)
Component: Whittier Access and Tunnel (2510)
FY2022 Governor's Budget
Position Totals: PFT – 1/PPT – 0/NP – 0 = 1 Total



*PCN 25-1217 is budgeted in the Central Region Highways and Aviation budget component