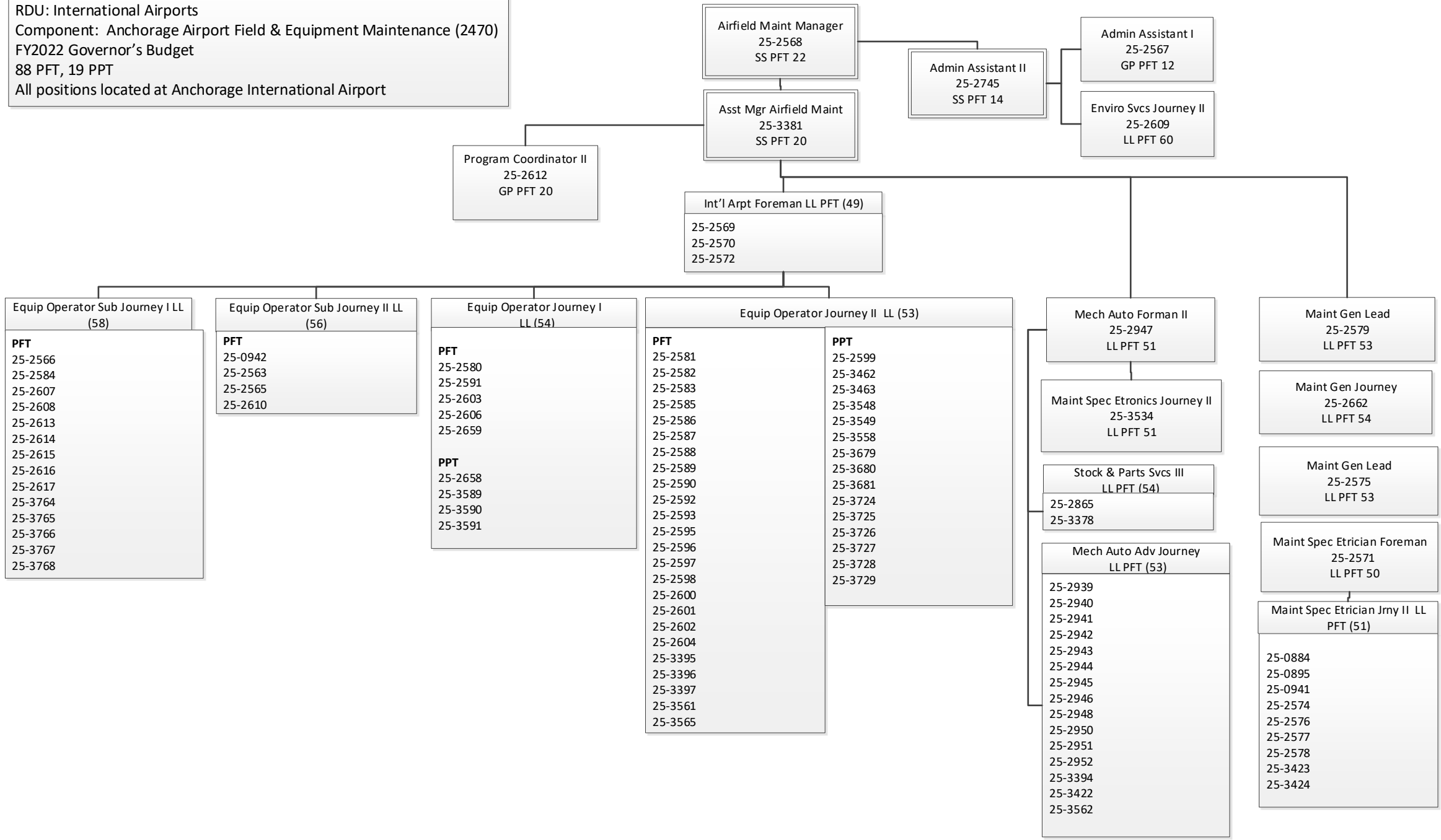


Department of Transportation & Public Facilities
 RDU: International Airports
 Component: Anchorage Airport Field & Equipment Maintenance (2470)
 FY2022 Governor's Budget
 88 PFT, 19 PPT
 All positions located at Anchorage International Airport



Equip Operator Sub Journey I LL (58)

PFT
 25-2566
 25-2584
 25-2607
 25-2608
 25-2613
 25-2614
 25-2615
 25-2616
 25-2617
 25-3764
 25-3765
 25-3766
 25-3767
 25-3768

Equip Operator Sub Journey II LL (56)

PFT
 25-0942
 25-2563
 25-2565
 25-2610

Equip Operator Journey I LL (54)

PFT
 25-2580
 25-2591
 25-2603
 25-2606
 25-2659

PPT
 25-2658
 25-3589
 25-3590
 25-3591

Equip Operator Journey II LL (53)

PFT
 25-2581
 25-2582
 25-2583
 25-2585
 25-2586
 25-2587
 25-2588
 25-2589
 25-2590
 25-2592
 25-2593
 25-2595
 25-2596
 25-2597
 25-2598
 25-2600
 25-2601
 25-2602
 25-2604
 25-3395
 25-3396
 25-3397
 25-3561
 25-3565

PPT
 25-2599
 25-3462
 25-3463
 25-3548
 25-3549
 25-3558
 25-3679
 25-3680
 25-3681
 25-3724
 25-3725
 25-3726
 25-3727
 25-3728
 25-3729

Mech Auto Forman II
 25-2947
 LL PFT 51

Maint Spec Etronics Journey II
 25-3534
 LL PFT 51

Stock & Parts Svcs III
 LL PFT (54)
 25-2865
 25-3378

Mech Auto Adv Journey
 LL PFT (53)
 25-2939
 25-2940
 25-2941
 25-2942
 25-2943
 25-2944
 25-2945
 25-2946
 25-2948
 25-2950
 25-2951
 25-2952
 25-3394
 25-3422
 25-3562

Maint Gen Lead
 25-2579
 LL PFT 53

Maint Gen Journey
 25-2662
 LL PFT 54

Maint Gen Lead
 25-2575
 LL PFT 53

Maint Spec Etrician Foreman
 25-2571
 LL PFT 50

Maint Spec Etrician Jrny II LL
 PFT (51)
 25-0884
 25-0895
 25-0941
 25-2574
 25-2576
 25-2577
 25-2578
 25-3423
 25-3424