

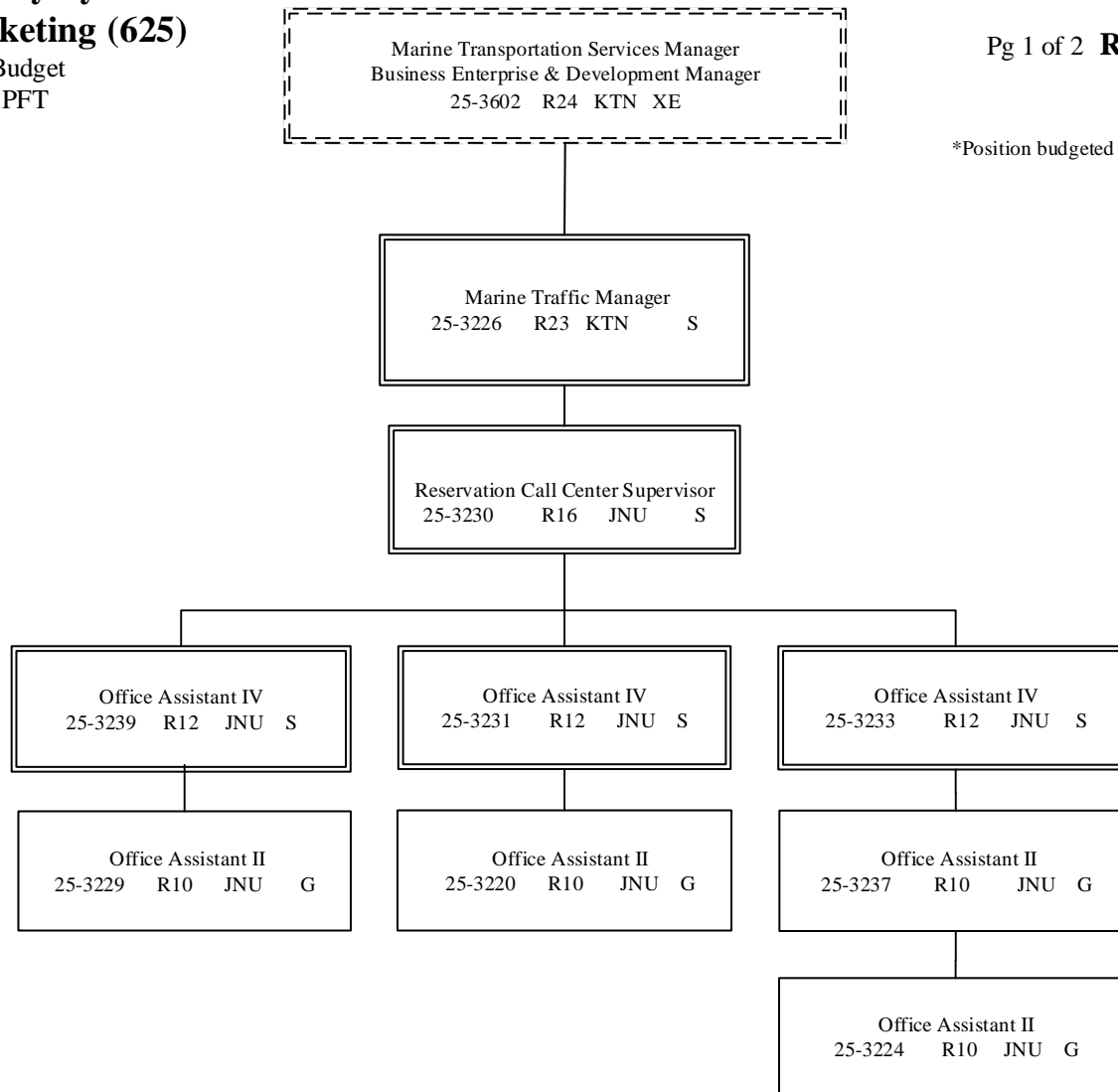
Department of Transportation & Public Facilities  
**Alaska Marine Highway System**  
**Reservations and Marketing (625)**

FY2022 Governor's Budget  
 Position Counts: 11 PFT

**AMHS Business Enterprise & Development**

Pg 1 of 2 **RESERVATIONS & SALES**

\*Position budgeted in Vessel Operations Mgt component



G = General Gov., AK State Employees Assoc.  
 S = Supervisory, AK Public Employees Assoc.

KTN = Ketchikan JNU = Juneau

All positions are PFT

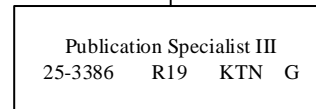
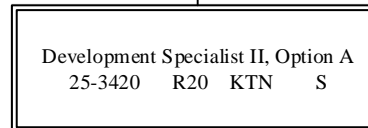
Department of Transportation & Public Facilities  
**Alaska Marine Highway System  
Reservations and Marketing (625)**

**AMHS Business Enterprise & Development**

Pg 2 of 2 **MARKETING**



\*Position budgeted in Vessel Operations Mgt component



G = General Gov., AK State Employees Assoc.  
S = Supervisory, AK Public Employees Assoc.  
KTN = Ketchikan

All positions are PFT