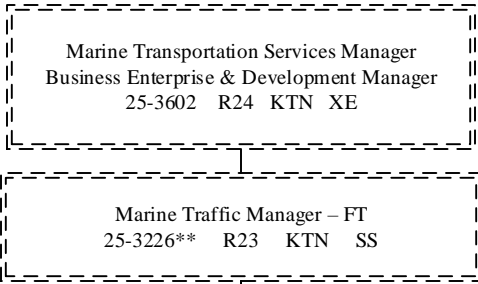


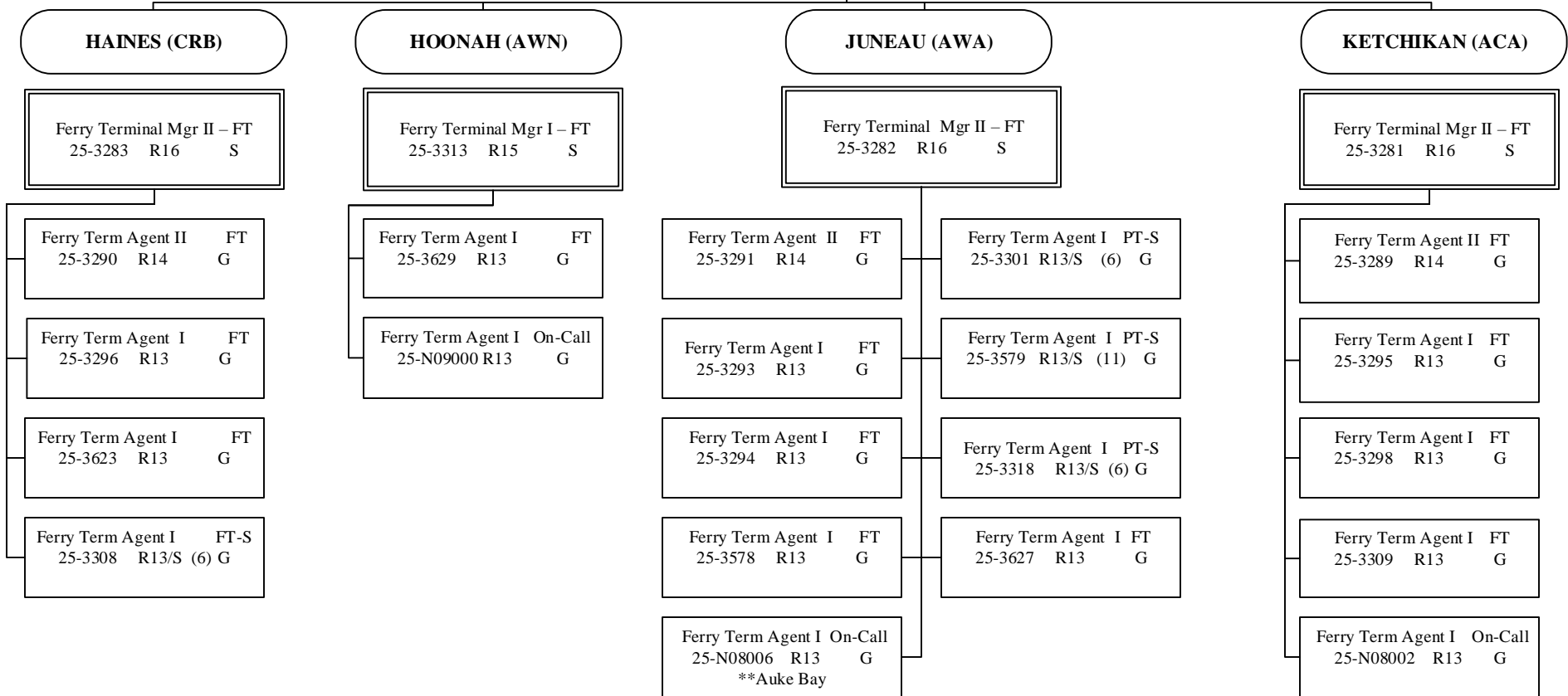
Department of Transportation & Public Facilities
Alaska Marine Highway System
Marine Shore Operations (2789)
SOUTHEAST TERMINALS
 FY2022 Governor's Budget
 Position Counts: 30 FTP / 20 PPT/S 5 NP



AMHS
Marine Shore Operations
SOUTHEAST TERMINALS
Pg 1 of 3

*Position budgeted in Vessel Ops Mgt Component

**Position budgeted in Reservations and Marketing Component



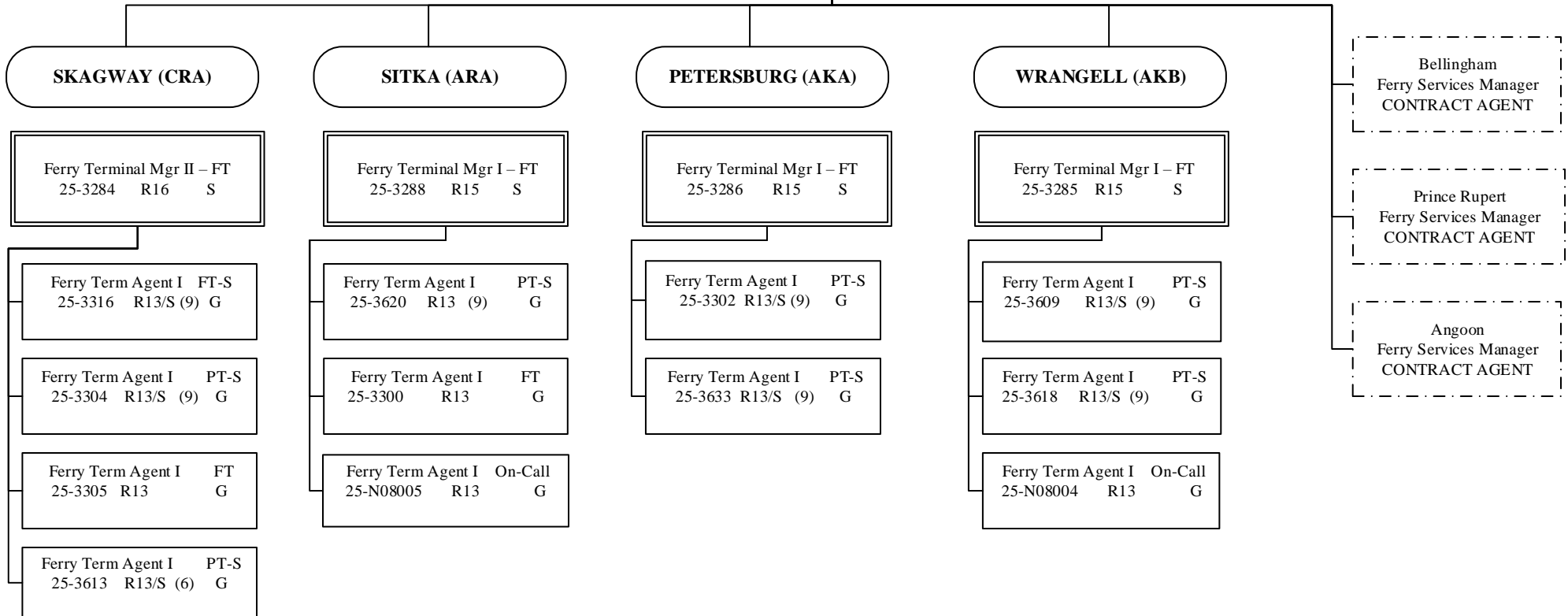
All positions are PFT unless otherwise noted
 (S) = PPT/Seasonal, # of months budgeted in ()

Department of Transportation & Public Facilities
Alaska Marine Highway System
Marine Shore Operations (2789)
SOUTHEAST TERMINALS

AMHS
Marine Shore Operations
SOUTHEAST TERMINALS
Pg 2 of 3

Marine Transportation Services Manager
 Business Enterprise & Development Manager
 25-3602 R24 KTN XE

Marine Traffic Manager – FT
 25-3226 R23 KTN SS



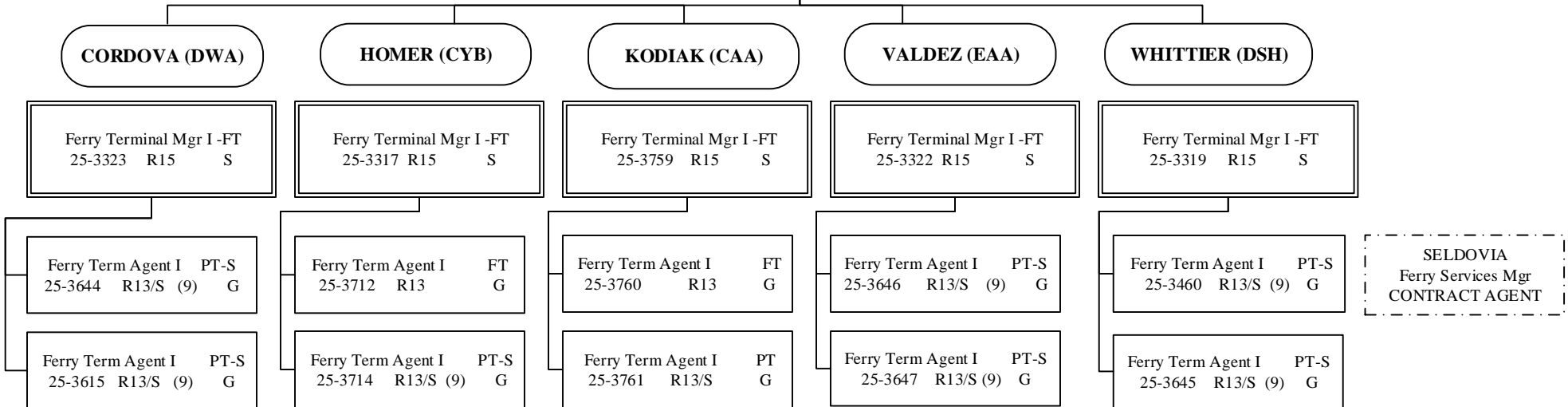
All positions are PFT unless otherwise noted
 (S) = PPT/Seasonal, # of months budgeted in ()

Department of Transportation & Public Facilities
Alaska Marine Highway System
Marine Shore Operations (2789)
SOUTHWEST TERMINALS

AMHS
Marine Shore Operations
SOUTHWEST TERMINALS
Pg 3 of 3

Marine Transportation Services Manager
 Business Enterprise & Development Manager
 25-3602 R24 KTN XE

Marine Traffic Manager – FT
 25-3226 R23 KTN SS



All positions are PFT unless otherwise noted
 (S) = PPT/Seasonal, # of months budgeted in ()