

**State of Alaska
FY2022 Governor's Operating Budget**

**Department of Transportation/Public Facilities
Vessel Operations Management
Component Budget Summary**

Component: Vessel Operations Management

Contribution to Department's Mission

Provide safe, secure, reliable, and efficient transportation of people, goods, and vehicles through the Alaska Marine Highway System (AMHS) by developing sound policies and procedures for operations and by staffing vessels and terminals with well-trained professionals who are sensitive to the needs of the customers.

Core Services

- Oversee the operation of nine vessels, along with three vessels in long-term layup, and 16 state-owned terminals with over 650 shipboard budgeted positions and approximately 100 shoreside employees.
- Develop, implement, and enforce policies and procedures for AMHS.
- Enforce labor contracts and schedule qualified employees for work assignments to meet required staffing levels.
- Train vessel and terminal personnel to ensure safety and service for the traveling public and meet the Standards for Training, Certification and Watch-Keeping for Seafarers requirements, along with all other required federal maritime, state operating and Occupational Safety and Health Administration requirements.
- Provide security for employees, passengers, and vessels as per the system-wide security regulations of the federal Maritime Transportation Security Act.
- Work with state and federal emergency management officials to ensure that all required plans, drills, exercises, and coordination is satisfied, and to ensure that the AMHS is capable of a safe and efficient response in the event of a state or national emergency.

Major Component Accomplishments in 2020

- Demonstrated proactive compliance with Department of Environmental Conservation and Environmental Protection Agency requirements for both shipboard and shoreside components.
- Completed the capital improvement project of repowering and conducting a major conversion of the M/V Matanuska at Vigor Shipyard in Portland, Oregon.
- Met the federal requirements for quarterly vessel oil spill drills.
- Completed the build out of the infrastructure for the land side component of the new satellite communication system. This component will provide for hand-held passenger scanning in all ports with or without cellular connectivity.
- Continued coordination with Southcoast Region Engineering for the upgrades being made to AMHS marine terminal facilities.
- Continued with installation of side vehicle door on the M/V Tazlina and M/V Hubbard.
- Completed all United States Coast Guard required steel work, repairs, and re-certification of the M/V LeConte.
- Commenced required steel work and repairs needed to operate the M/V Aurora.

Key Component Challenges

- Retaining a sufficient number of deck officers with pilotage qualifications during the summer season when the majority of AMHS ships are operating.
- Complying with increased environmental regulations, which include the vessels, terminal stormwater runoff water permits, terminal wastewater requirements, and new requirements from the Centers for Disease Control and Prevention.
- Implementation and learning to make full use of the new reservation and manifest system.
- Hiring sufficient new unlicensed passenger services crew for year-round operations due to the inability to find employees that can meet federal drug and security background check requirements.
- High turnover in unlicensed passenger services crew due to lack of steady work during the winter months, requiring increased recruitment and hiring from out of state. AMHS has gone to a year-round hiring process as opposed to twice annually. The constant hiring process is very labor intensive given an already reduced staff due to budget constraints.
- Lack of licensed engineering officers, requiring AMHS to hire licensed vessel engineers out of the Seattle union

hall and incurring additional travel costs.

- Loss of senior deck officers due to retirement and other job opportunities.
- Sufficient state capital and federal funding to maintain and upgrade the aging AMHS vessels and state-owned marine terminals.
- Continuing to provide as many operating weeks of service as possible, given reduced budgets.
- Providing shoreside management support to vessels with a much reduced shoreside staff due to budget reductions.
- Operating vessels in the COVID-19 environment.

COVID-19 Response and Telework Challenges

- Shipboard operations in the COVID-19 environment have proven to be very challenging. AMHS has drafted a very aggressive mitigation plan which the ships crews are following. AMHS has still experienced four COVID-19 shipboard situations, two of which have stopped ships from operating, resulting in lost revenue.
- Shoreside employee telework to date has gone very smoothly. All required work is being completed, and a high percentage of employees have chosen to telework either full-time or part time.

Significant Changes in Results to be Delivered in FY2022

- No significant changes anticipated.

Statutory and Regulatory Authority

AS 19 Highways & Ferries
AS 44 State Government

Contact Information
<p>Contact: Rob Carpenter, Deputy Commissioner Phone: (907) 465-3906 E-mail: rob.carpenter@alaska.gov</p>

Vessel Operations Management Personal Services Information				
Authorized Positions			Personal Services Costs	
	FY2021 Management Plan	FY2022 Governor		
Full-time	28	28	Annual Salaries	2,127,462
Part-time	0	0	COLA	11,941
Nonpermanent	0	0	Premium Pay	43,194
			Annual Benefits	1,329,264
			<i>Less 2.04% Vacancy Factor</i>	<i>(71,506)</i>
			Lump Sum Premium Pay	0
Totals	28	28	Total Personal Services	3,440,355

Position Classification Summary					
Job Class Title	Anchorage	Fairbanks	Juneau	Others	Total
Accounting Clerk	0	0	0	1	1
Accounting Technician I	0	0	0	2	2
Accounting Technician II	0	0	0	1	1
Administrative Assistant I	0	0	0	1	1
Administrative Assistant II	0	0	0	1	1
Administrative Officer II	0	0	0	1	1
Amhs Disp Spvr	0	0	0	1	1
Amhs Dispatch	0	0	0	3	3
Budget Analyst II	0	0	0	1	1
Division Director - Px	0	0	0	1	1
Env Prgm Spc IV	0	0	0	1	1
Information System Coordinator	0	0	0	1	1
M Trans Svs Mgr	0	0	0	2	2
Mh Sft Mg Coord	0	0	0	1	1
Occup S&C Ofc	0	0	0	1	1
Office Assistant II	0	0	0	3	3
Passenger Services Inspector	0	0	0	1	1
Port Captain	0	0	0	2	2
S/S Mgr/PT Stew	0	0	0	1	1
Training Specialist I	0	0	0	1	1
Vessel Scheduling Coordinator	0	0	0	1	1
Totals	0	0	0	28	28

Component Detail All Funds
Department of Transportation/Public Facilities

Component: Vessel Operations Management (629)
RDU: Marine Highway System (334)

Non-Formula Component

	FY2020 Actuals	FY2021 Conference Committee	FY2021 Authorized	FY2021 Management Plan	FY2022 Governor	FY2021 Management Plan vs FY2022 Governor	
71000 Personal Services	3,513.7	3,477.7	3,477.7	3,355.7	3,440.4	84.7	2.5%
72000 Travel	21.0	56.9	56.9	40.9	40.9	0.0	0.0%
73000 Services	35.2	73.8	73.8	111.5	200.7	89.2	80.0%
74000 Commodities	49.1	63.8	63.8	185.8	120.8	-65.0	-35.0%
75000 Capital Outlay	0.0	0.0	0.0	0.0	0.0	0.0	0.0%
77000 Grants, Benefits	0.0	0.0	0.0	0.0	0.0	0.0	0.0%
78000 Miscellaneous	0.0	0.0	0.0	0.0	0.0	0.0	0.0%
Totals	3,619.0	3,672.2	3,672.2	3,693.9	3,802.8	108.9	2.9%
Fund Sources:							
1004 Gen Fund (UGF)	0.0	0.0	0.0	21.7	21.7	0.0	0.0%
1061 CIP Rcpts (Other)	266.5	146.4	146.4	146.4	147.1	0.7	0.5%
1076 Marine Hwy (DGF)	3,352.5	3,525.8	3,525.8	3,525.8	3,634.0	108.2	3.1%
Unrestricted General (UGF)	0.0	0.0	0.0	21.7	21.7	0.0	0.0%
Designated General (DGF)	3,352.5	3,525.8	3,525.8	3,525.8	3,634.0	108.2	3.1%
Other Funds	266.5	146.4	146.4	146.4	147.1	0.7	0.5%
Federal Funds	0.0	0.0	0.0	0.0	0.0	0.0	0.0%
Positions:							
Permanent Full Time	38	28	28	28	28	0	0.0%
Permanent Part Time	0	0	0	0	0	0	0.0%
Non Permanent	0	0	0	0	0	0	0.0%

Change Record Detail - Multiple Scenarios with Descriptions
Department of Transportation/Public Facilities

Component: Vessel Operations Management (629)
RDU: Marine Highway System (334)

Scenario/Change Record Title	Trans Type	Totals	Personal Services	Travel	Services	Commodities	Capital Outlay	Grants, Benefits	Miscellaneous	Positions		NP
										PFT	PPT	
***** Changes From FY2021 Conference Committee To FY2021 Authorized *****												
Conference Committee												
	ConfCom	3,672.2	3,477.7	56.9	73.8	63.8	0.0	0.0	0.0	28	0	0
1061 CIP Rcpts		146.4										
1076 Marine Hwy		3,525.8										
Subtotal		3,672.2	3,477.7	56.9	73.8	63.8	0.0	0.0	0.0	28	0	0
***** Changes From FY2021 Authorized To FY2021 Management Plan *****												
Align Authority with Anticipated Expenditures												
	LIT	0.0	-122.0	-37.7	37.7	122.0	0.0	0.0	0.0	0	0	0
Transfer authority from personal services and travel to the services and commodities lines to cover anticipated expenditures. The remaining personal services and travel authority is sufficient to cover anticipated expenditures.												
Transfer from Marine Vessel Operations to Align System Authority for FY2021 Operating Plan												
	Trin	21.7	0.0	21.7	0.0	0.0	0.0	0.0	0.0	0	0	0
1004 Gen Fund		21.7										
Transfer from Marine Vessel Operations to align system authority to meet the FY2021 Alaska Marine Highway System operating plan.												
Subtotal		3,693.9	3,355.7	40.9	111.5	185.8	0.0	0.0	0.0	28	0	0
***** Changes From FY2021 Management Plan To FY2022 Governor *****												
FY2022 Salary Adjustments												
	SalAdj	11.6	11.6	0.0	0.0	0.0	0.0	0.0	0.0	0	0	0
1061 CIP Rcpts		0.7										
1076 Marine Hwy		10.9										
FY2022 1% COLA for ASEA/General Government (GG/GP/GY/GZ): \$11.6.												
Transfer from Human Resources to Fund Employee Based Rates - DOPLR/IRIS HRM												
	Trin	18.3	0.0	0.0	18.3	0.0	0.0	0.0	0.0	0	0	0
1076 Marine Hwy		18.3										
Transfer from Human Resources component to fund Division of Personnel and Labor Relations and Integrated Resource Information System Human Resource Management rates which have been incorporated into individual positions.												
Transfer from Information Systems and Services for Employee Based Rates Funding - OIT												
	Trin	79.0	0.0	0.0	79.0	0.0	0.0	0.0	0.0	0	0	0
1076 Marine Hwy		79.0										

Change Record Detail - Multiple Scenarios with Descriptions
Department of Transportation/Public Facilities

Component: Vessel Operations Management (629)
RDU: Marine Highway System (334)

Scenario/Change Record Title	Trans Type	Totals	Personal Services	Travel	Services	Commodities	Capital Outlay	Grants, Benefits	Miscellaneous	Positions		NP
										PFT	PPT	
Transfer from Information Systems and Services component to cover Office of Information Technology rates which have been incorporated into individual positions.												
Transfer to Align System Authority for FY2022 Operating Plan	LIT	0.0	73.1	0.0	-8.1	-65.0	0.0	0.0	0.0	0	0	0
Transfer authority from the services and commodities lines to personal services to cover anticipated expenditures. The remaining authority is sufficient to cover anticipated expenditures in the services and commodities lines.												
Totals		3,802.8	3,440.4	40.9	200.7	120.8	0.0	0.0	0.0	28	0	0

Line Item Detail (1676)
Department of Transportation/Public Facilities
Travel

Component: Vessel Operations Management (629)

Line Number	Line Name		FY2020 Actuals	FY2021 Management Plan	FY2022 Governor
2000	Travel		21.0	40.9	40.9
Object Class	Servicing Agency	Explanation	FY2020 Actuals	FY2021 Management Plan	FY2022 Governor
2000 Travel Detail Totals			21.0	40.9	40.9
2000	In-State Employee Travel	Travel to review material conditions of vessels, review operating procedures at terminals and on vessels, confer with naval architects and union leaders, review vessel overhauls and ship repairs.	21.0	40.9	40.9

Line Item Detail (1676)
Department of Transportation/Public Facilities
Services

Component: Vessel Operations Management (629)

Line Number	Line Name		FY2020 Actuals	FY2021 Management Plan	FY2022 Governor
3000	Services		35.2	111.5	200.7
Object Class	Servicing Agency	Explanation	FY2020 Actuals	FY2021 Management Plan	FY2022 Governor
3000 Services Detail Totals			35.2	111.5	200.7
3000	Education Services	Educational services including training, conferences and employee tuition.	5.0	8.0	7.3
3003	Information Technology	Represents a broad range of data-processing, telecommunications and communications services.	0.2	7.0	5.0
3004	Telecommunications	Long distance and cellular charges.	13.5	7.0	15.0
3005	Health Services	Situational drug and alcohol testing of employees.	0.2	0.0	0.5
3006	Delivery Services	Delivery services.	0.4	2.0	1.0
3007	Advertising and Promotions	Advertising job postings in state and national publications for hard to fill positions.	1.3	4.0	2.0
3008	Utilities	Water, sewage, and disposal for port steward's office.	0.0	25.0	15.0
3009	Structure/Infrastructure/Land	Cleaning and facility services.	6.6	5.0	9.0
3010	Equipment/Machinery	Copier maintenance and repair.	0.9	5.0	2.0
3011	Other Services	Consultants for various system survey and analysis.	1.4	19.7	5.0
3017	Inter-Agency Information Technology Non-Telecommunications	Admin - Department-wide Computer services provided by Department of Administration such as central server, data storage, printing, network services, open connect, and task order system.	0.0	0.0	79.0
3018	Inter-Agency Information Technology	Admin - Department-wide Telecommunications services	0.0	13.1	20.0

Line Item Detail (1676)
Department of Transportation/Public Facilities
Services

Component: Vessel Operations Management (629)

Object Class	Servicing Agency	Explanation	FY2020 Actuals	FY2021 Management Plan	FY2022 Governor
3000 Services Detail Totals			35.2	111.5	200.7
Telecommunications		provided by the Department of Administration such as basic telephone services, equipment and features, dedicated voice/data line service, statewide paging, two-way radio, and video conferencing.			
3021 Inter-Agency Mail	Admin - Department-wide	Chargeback fees for central mail services such as mailing vendor payments and payroll warrants.	0.2	0.2	0.3
3022 Inter-Agency Human Resources	Admin - Department-wide	Chargeback fees for human resource services such as labor relations, position classification and payroll processing.	0.0	0.0	18.2
3027 Inter-Agency Financial	Admin - Department-wide	Chargebacks fees for IRIS/ALDER.	0.0	0.0	13.6
3028 Inter-Agency Americans with Disabilities Act Compliance	Admin - Department-wide	Chargeback fees for the statewide coordinator for the Americans with Disabilities Act (ADA).	0.3	0.5	0.3
3037 State Equipment Fleet	Trans - State Equipment Fleet (2791)	State equipment fleet vehicles.	5.2	15.0	7.5

Line Item Detail (1676)
Department of Transportation/Public Facilities
Commodities

Component: Vessel Operations Management (629)

Line Number	Line Name		FY2020 Actuals	FY2021 Management Plan	FY2022 Governor
4000	Commodities		49.1	185.8	120.8
Object Class	Servicing Agency	Explanation	FY2020 Actuals	FY2021 Management Plan	FY2022 Governor
4000 Commodities Detail Totals			49.1	185.8	120.8
4000	Business	General business supplies, equipment and furniture.	16.5	84.0	45.0
4002	Household/Institutional	Cleaning supplies.	4.9	40.0	20.0
4003	Scientific and Medical	Medical supplies (e.g. disposable gloves, first aid kits and replacement supplies).	0.0	15.0	10.0
4004	Safety	Safety supplies, fire suppression.	15.1	30.0	25.0
4005	Building Materials	Commodities purchased for repairs and maintenance, such as signage, equipment fuel, plumbing and electrical parts.	0.0	5.0	3.8
4015	Parts and Supplies	Parts and supplies.	12.5	10.0	15.0
4020	Equipment Fuel	Fuel for equipment.	0.1	1.8	2.0

Revenue Detail (1681)
Department of Transportation/Public Facilities

Component: Vessel Operations Management (629)

Revenue Type (OMB Fund Code) Revenue Source	Component	Comment	FY2020 Actuals	FY2021 Management Plan	FY2022 Governor
5061 CIP Rcpts (1061 CIP Rcpts)			266.5	146.4	147.1
5351 Capital Improvement Project Inter-Agency		Recovery of indirect costs from the capital budget via the department's Indirect Cost Allocation Plan (ICAP).	135.3	146.4	147.1
5351 Capital Improvement Project Inter-Agency		Capital improvement project receipts for work in direct support of capital projects.	131.2	0.0	0.0

Inter-Agency Services (1682)
Department of Transportation/Public Facilities

Component: Vessel Operations Management (629)

				FY2020 Actuals	FY2021 Management Plan	FY2022 Governor
Component Totals				5.7	28.8	138.9
With Department of Administration				0.5	13.8	131.4
With Department of Transportation/Public Facilities				5.2	15.0	7.5
Object Class	Servicing Agency	Explanation	FY2020 Actuals	FY2021 Management Plan	FY2022 Governor	
3017	Inter-Agency Information Technology Non-Telecommunications	Admin - Department-wide	Computer services provided by Department of Administration such as central server, data storage, printing, network services, open connect, and task order system.	0.0	0.0	79.0
3018	Inter-Agency Information Technology Telecommunications	Admin - Department-wide	Telecommunications services provided by the Department of Administration such as basic telephone services, equipment and features, dedicated voice/data line service, statewide paging, two-way radio, and video conferencing.	0.0	13.1	20.0
3021	Inter-Agency Mail	Admin - Department-wide	Chargeback fees for central mail services such as mailing vendor payments and payroll warrants.	0.2	0.2	0.3
3022	Inter-Agency Human Resources	Admin - Department-wide	Chargeback fees for human resource services such as labor relations, position classification and payroll processing.	0.0	0.0	18.2
3027	Inter-Agency Financial	Admin - Department-wide	Chargebacks fees for IRIS/ALDER.	0.0	0.0	13.6
3028	Inter-Agency Americans with Disabilities Act Compliance	Admin - Department-wide	Chargeback fees for the statewide coordinator for the Americans with Disabilities Act (ADA).	0.3	0.5	0.3
3037	State Equipment Fleet	Trans - State Equipment Fleet (2791)	State equipment fleet vehicles.	5.2	15.0	7.5

Personal Services Expenditure Detail
Department of Transportation/Public Facilities

Scenario: FY2022 Governor (17280)
Component: Vessel Operations Management (629)
RDU: Marine Highway System (334)

PCN	Job Class Title	Time Status	Retire Code	Barg Unit	Location	Salary Sched	Range / Step	Comp Months	Split / Count	Annual Salaries	COLA	Premium Pay	Annual Benefits	Total Costs	UGF Amount
25-0459	Accounting Technician II	FT	A	SS	Ketchikan	600	14K	12.0		60,736	0	0	41,327	102,063	0
25-2246	Administrative Officer II	FT	A	SS	Ketchikan	200	19F	12.0		80,891	0	0	48,792	129,683	0
25-2342	Division Director - Px	FT	A	XE	Ketchikan	N00	27P	12.0		156,842	0	0	75,920	232,762	0
25-2433	Office Assistant II	FT	A	GP	Ketchikan	200	10L	12.0		46,898	643	0	36,161	83,702	0
25-3086	Office Assistant II	FT	A	GP	Ketchikan	200	10J	12.0		43,992	603	0	35,085	79,680	0
25-3088	Amhs Disp Spvr	FT	A	KK	Ketchikan	200	16O	12.0		81,244	0	0	48,923	130,167	0
25-3093	Amhs Dispatch	FT	A	KK	Ketchikan	200	15K / L	12.0		66,222	0	14,211	48,623	129,056	0
25-3161	Amhs Dispatch	FT	A	KK	Ketchikan	200	15N / O	12.0		72,795	0	15,654	51,592	140,041	0
25-3174	Port Captain	FT	A	SS	Ketchikan	200	23F	12.0		105,768	0	0	58,007	163,775	0
25-3175	Administrative Assistant I	FT	A	GP	Ketchikan	200	12E / F	12.0		45,533	624	0	35,656	81,813	0
25-3193	Budget Analyst II	FT	A	GP	Ketchikan	200	19D / E	12.0		72,580	995	0	45,674	119,249	0
25-3221	Accounting Technician I	FT	A	GP	Ketchikan	200	12O	12.0		59,515	816	0	40,835	101,166	0
25-3225	Accounting Technician I	FT	A	GP	Ketchikan	200	12D / E	12.0		43,736	599	0	34,990	79,325	0
25-3228	Vessel Scheduling Coordinator	FT	A	GP	Ketchikan	200	17L / M	12.0		76,494	1,048	0	47,124	124,666	0
25-3333	S/S Mgr/PT Stew	FT	A	SS	Ketchikan	200	21J	12.0		95,264	0	0	54,116	149,380	0
25-3337	Port Captain	FT	A	SS	Ketchikan	200	23J / K	12.0		111,423	0	0	60,101	171,524	0
25-3339	M Trans Svs Mgr	FT	A	XE	Ketchikan	N00	24K / L	12.0		115,333	0	0	61,406	176,739	0
25-3340	Accounting Clerk	FT	A	GP	Ketchikan	200	10D / E	12.0		38,579	529	0	33,080	72,188	0
25-3344	Occup S&C Ofc	FT	A	LL	Ketchikan	2AA	49L	12.0		81,250	0	0	48,781	130,031	0
25-3387	Mh Sft Mg Coord	FT	A	GP	Ketchikan	200	19L / M	12.0		87,906	1,205	0	51,351	140,462	0
25-3391	Amhs Dispatch	FT	A	KK	Ketchikan	200	15F	12.0		61,610	0	13,329	46,588	121,527	0
25-3435	Passenger Services Inspector	FT	A	GP	Ketchikan	200	17N	12.0		81,199	1,113	0	48,866	131,178	0
25-3478	Administrative Assistant II	FT	A	SS	Ketchikan	600	14F	12.0		56,971	0	0	39,932	96,903	0
25-3545	Training Specialist I	FT	A	GP	Ketchikan	200	16P	12.0		81,783	1,121	0	49,083	131,987	0
25-3586	Information System Coordinator	FT	A	GP	Ketchikan	200	18C / D	12.0		64,066	878	0	42,520	107,464	0
25-3602	M Trans Svs Mgr	FT	A	XE	Ketchikan	N00	24J	12.0		109,902	0	0	59,394	169,296	0
25-3739	Office Assistant II	FT	A	GP	Ketchikan	200	10M	12.0		48,419	664	0	36,725	85,808	0
25-3819	Env Prgm Spc IV	FT	A	GP	Ketchikan	200	20E / F	12.0		80,511	1,103	0	48,612	130,226	0

Note: If a position is split, an asterisk (*) will appear in the Split/Count column. If the split position is also counted in the component, two asterisks (**) will appear in this column. [No valid job title] appearing in the Job Class Title indicates that the PCN has an invalid class code or invalid range for the class code effective date of this scenario.

Personal Services Expenditure Detail
Department of Transportation/Public Facilities

Scenario: FY2022 Governor (17280)
Component: Vessel Operations Management (629)
RDU: Marine Highway System (334)

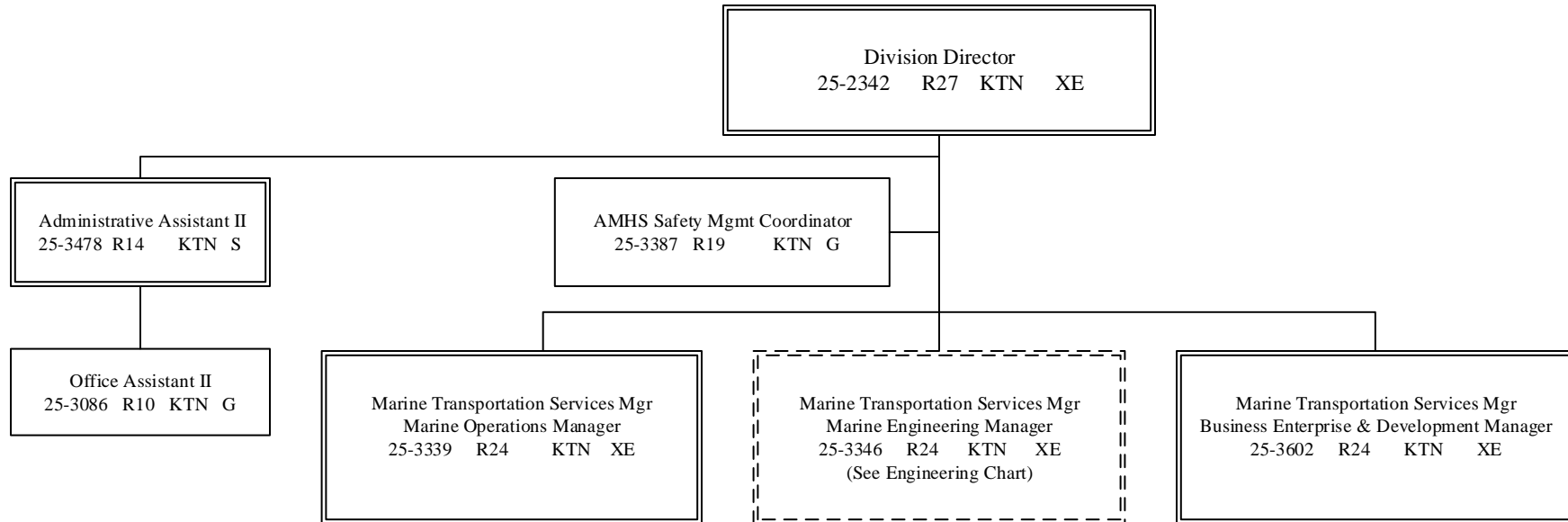
PCN	Job Class Title	Time Status	Retire Code	Barg Unit	Location	Salary Sched	Range / Step	Comp Months	Split / Count	Annual Salaries	COLA	Premium Pay	Annual Benefits	Total Costs	UGF Amount
		Total Positions	New	Deleted										Total Salary Costs:	2,127,462
														Total COLA:	11,941
	Full Time Positions:	28	0	0										Total Premium Pay:	43,194
	Part Time Positions:	0	0	0										Total Benefits:	1,329,264
	Non Permanent Positions:	0	0	0											
	Positions in Component:	28	0	0											
	Total Component Months:	336.0													
														Total Pre-Vacancy:	3,511,861
														Minus Vacancy Adjustment of 2.04%:	(71,506)
														Total Post-Vacancy:	3,440,355
														Plus Lump Sum Premium Pay:	0
														Personal Services Line 100:	3,440,355

PCN Funding Sources:	Pre-Vacancy	Post-Vacancy	Percent
1039 U/A Indirect Cost Recovery	150,144	147,087	4.28%
1076 Marine Highway System Fund	3,361,717	3,293,268	95.72%
Total PCN Funding:	3,511,861	3,440,355	100.00%

Note: If a position is split, an asterisk (*) will appear in the Split/Count column. If the split position is also counted in the component, two asterisks (**) will appear in this column. [No valid job title] appearing in the Job Class Title indicates that the PCN has an invalid class code or invalid range for the class code effective date of this scenario.

Department of Transportation & Public Facilities
Alaska Marine Highway System
Vessel Operations Management (629)

FY2022 Governor's Budget
 Position Counts: 28 PFT



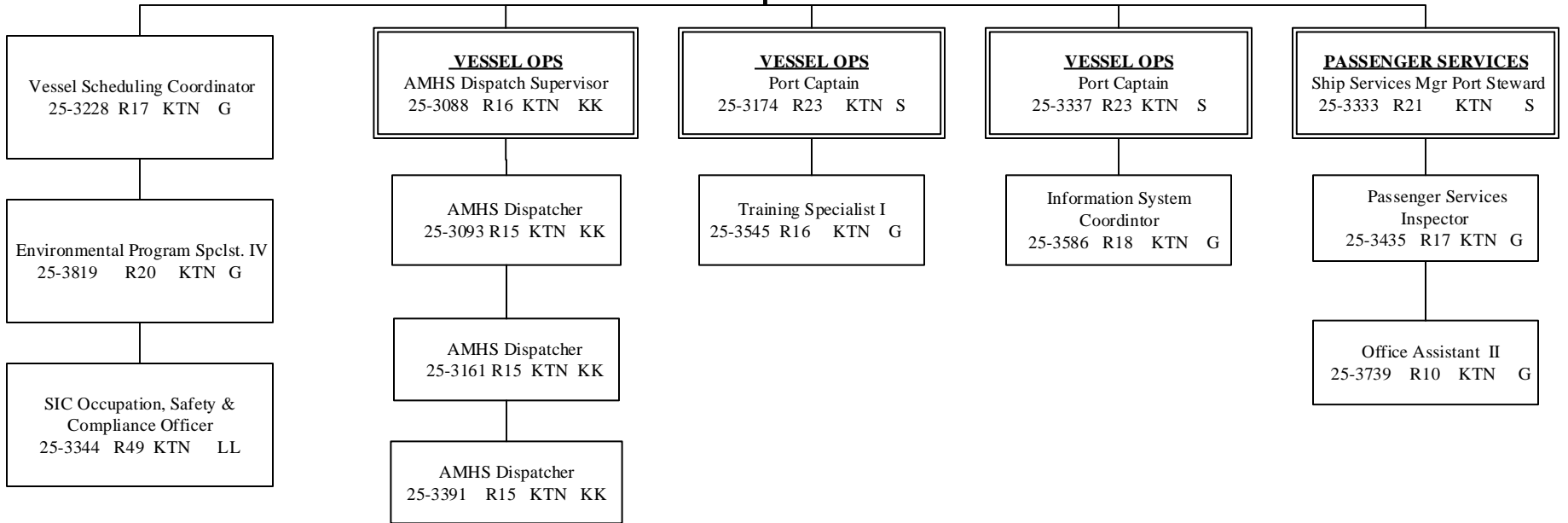
G = General Gov., AK State Employees Assoc.
 S = Supervisory, AK Public Employees Assoc.
 XE = Exempt

 KTN = Ketchikan JNU = Juneau
 ANCH = Anchorage

All positions are PFT unless otherwise noted.
 ---Positions not budgeted in this componet

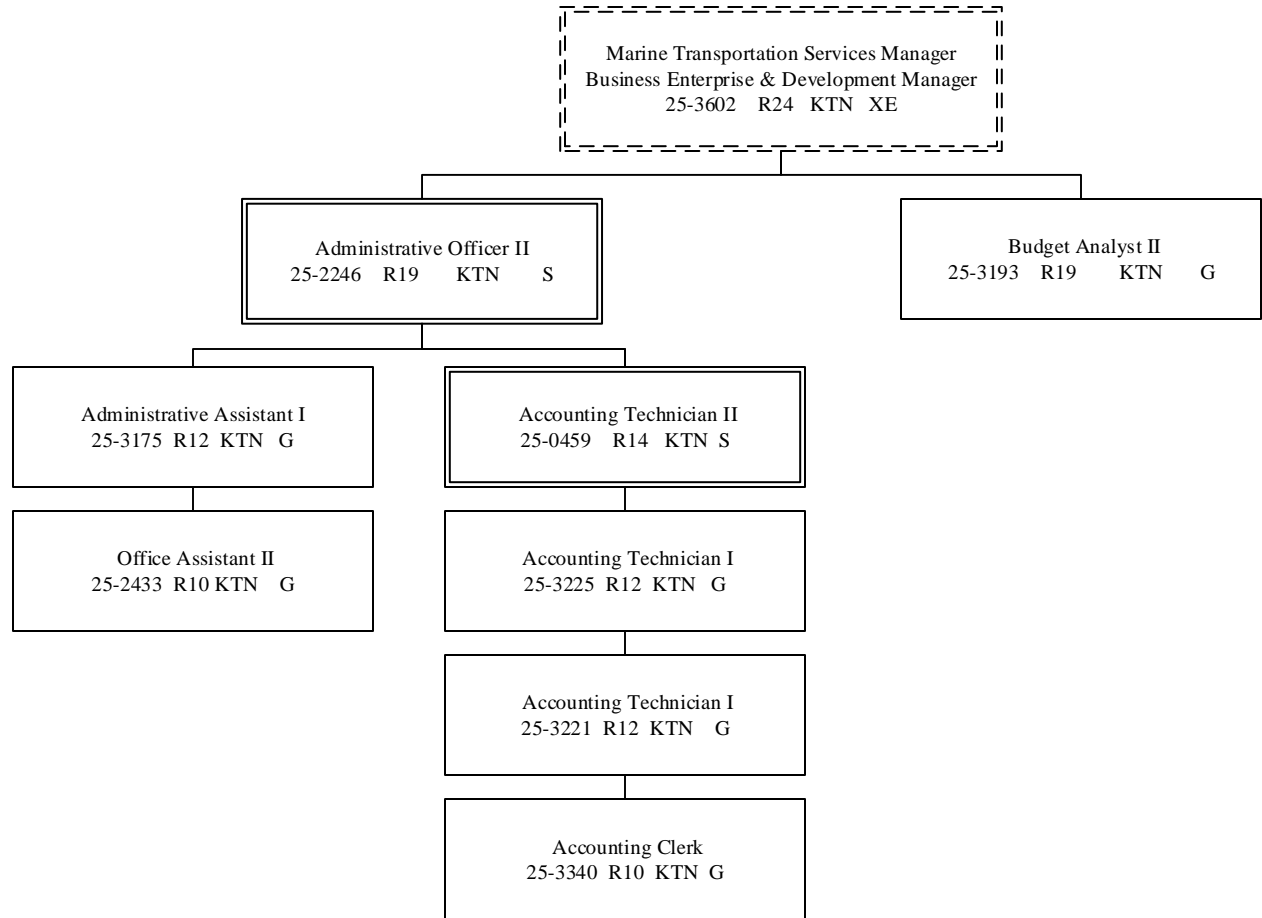
Department of Transportation & Public Facilities
Alaska Marine Highway System
Vessel Operations Management (629)

Marine Transportation Services Manager
 Marine Operations Manager
 25-3339 R24 KTN XE



G = General Gov., AK State Employees Assoc.
 S = Supervisory, AK Public Employees Assoc.
 XE = Exempt
 KK = Confidential Employees Assoc.
 KTN = Ketchikan

Department of Transportation & Public Facilities
Alaska Marine Highway System
Vessel Operations Management (629)



G = General Gov., AK State Employees Assoc.
 S = Supervisory, AK Public Employees Assoc.
 XE = Exempt
 KTN = Ketchikan

All positions are PFT unless otherwise noted.