

**Department of Administration**

Personnel (56)

RDU: Centralized Admin Services (13)

FY2023 Governor's Budget

Position Totals: 87 PFT

Director's Office

EEO

02-2001  
Division Director  
R27-Juneau-PX  
PFT

02-2040  
Labor Relations  
Manager  
*Budgeted in Labor  
Relations component*

18-7654  
HR Consultant IV  
R20-Juneau-CL  
PFT

12-4205  
Publication Spec III  
R19-Juneau-CL  
PFT

04-1018  
Admin Officer II  
R19-Juneau-CL  
PFT

07-1601  
Training Spec III  
R20-Anchorage-CL  
PFT

02-2100  
HR Consultant VI  
R24-Juneau-CL  
PFT

02-2108  
HR Consultant VI  
R24-Juneau-CL  
PFT

20-1024  
HR Consultant V  
R22-Anchorage-CL  
PFT

07-1219  
HR Consultant I  
R16-Juneau-CL  
PFT

11-0222  
HR Consultant II  
R18-Juneau-CL  
PFT

02-2015  
Admin Assistant II  
R14-Juneau-CL  
PFT

02-2052  
HR Tech I  
R12-Anchorage-CL  
PFT

06-0531  
HR Consultant V  
R22-Juneau-CL  
PFT

25-0059  
HR Consultant V  
R22-Anchorage-CL  
PFT

05-2144  
State ADA  
Coordinator  
R18-Anchorage-CL  
PFT

06-0453  
HR Tech I  
R12-Juneau-CL  
PFT

02-2013  
Office Asst I  
R8-Juneau-CL  
PFT

02-#177  
Systems  
Programmer V  
R25-Juneau-CL  
PFT

02-2122  
Training Spec III  
R20-Anchorage-CL  
PFT

02-2122  
Training Spec III  
R20-Anchorage-CL  
PFT

12-4305  
HR Consultant IV  
R20-Anchorage-CL  
PFT

02-1029  
HR Consultant II  
R18-Anchorage-CL  
PFT

Employee Planning &  
Information Center

02-2118  
Office Asst I  
R8-Juneau-CL  
PFT

AspireAlaska

Learning &  
Development

18-7053  
HR Consultant IV  
R20-Juneau-CL  
PFT

See attached  
sheets

02-2096  
HR Consultant V  
R22-Juneau-CL  
PFT

Shared with Labor  
Relations

02-6313  
HR Consultant II  
R18-Anchorage-CL  
PFT

03-0179  
HR Consultant I  
R16-Anchorage-CL  
PFT

02-2101  
HR Consultant IV  
R20-Anchorage-CL  
PFT

See attached  
sheets

Admin Support

See attached  
sheets

See attached  
sheets

See attached  
sheets

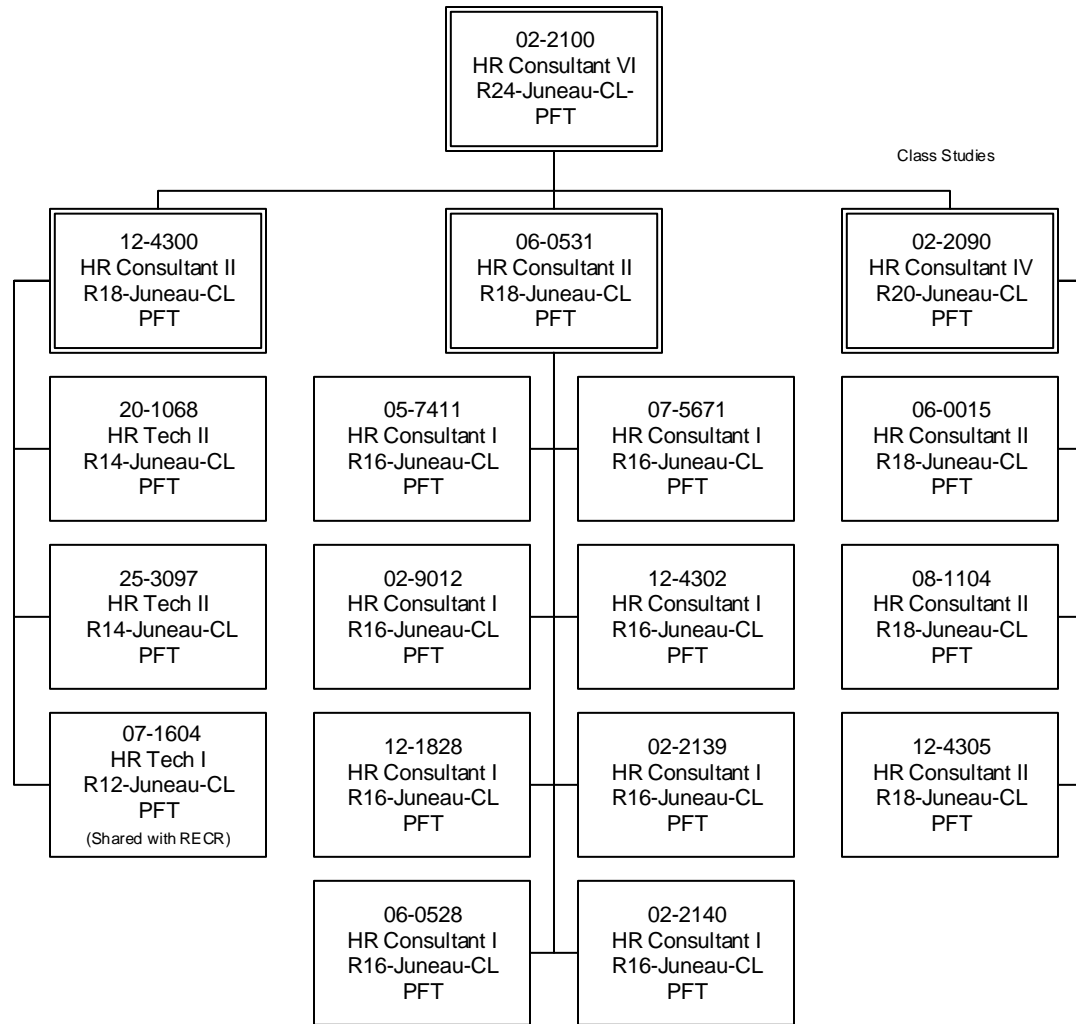
Shared with Labor  
Relations

See attached  
sheets

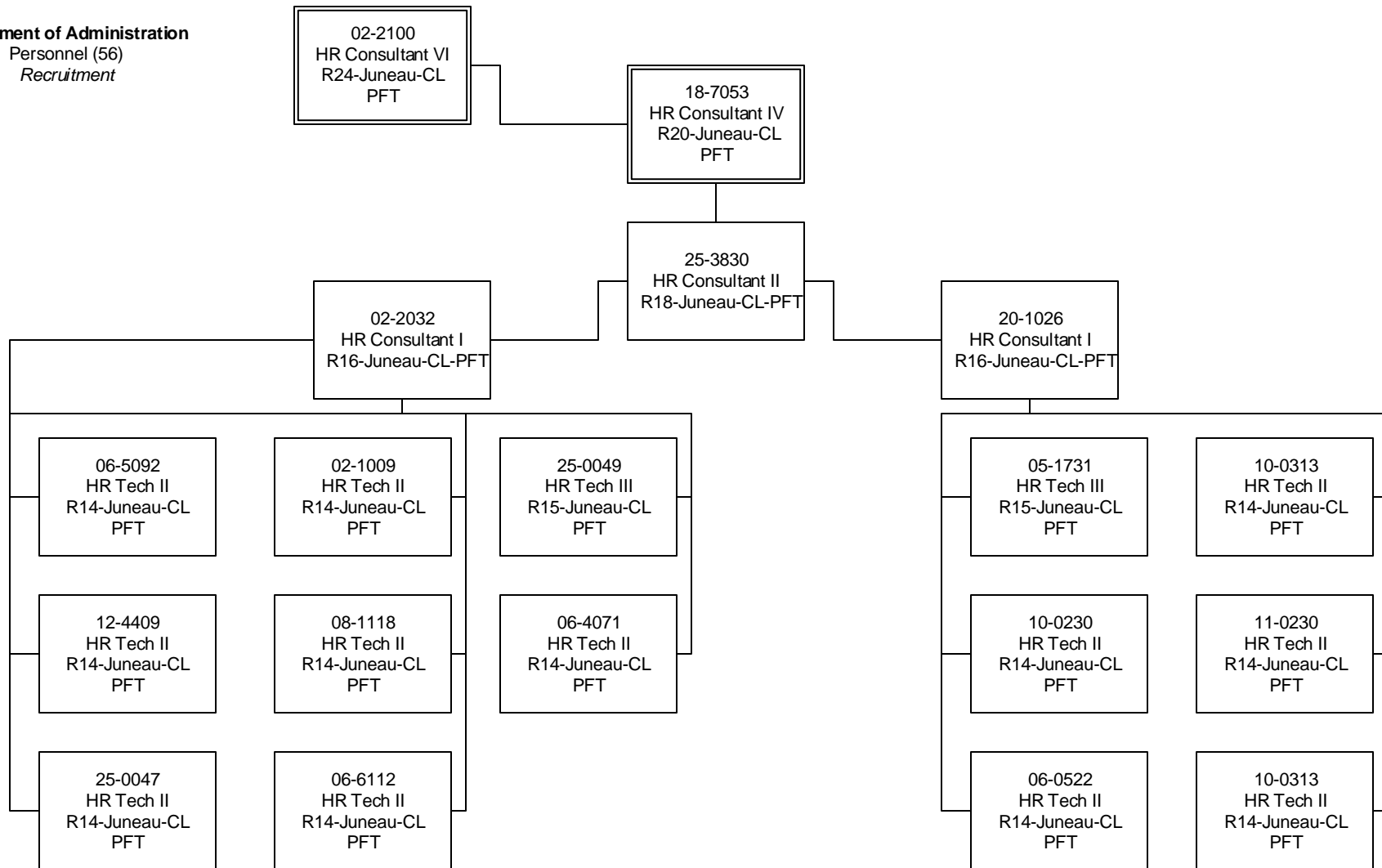
**Department of Administration**

Personnel (56)

Classification



Department of Administration  
Personnel (56)  
Recruitment



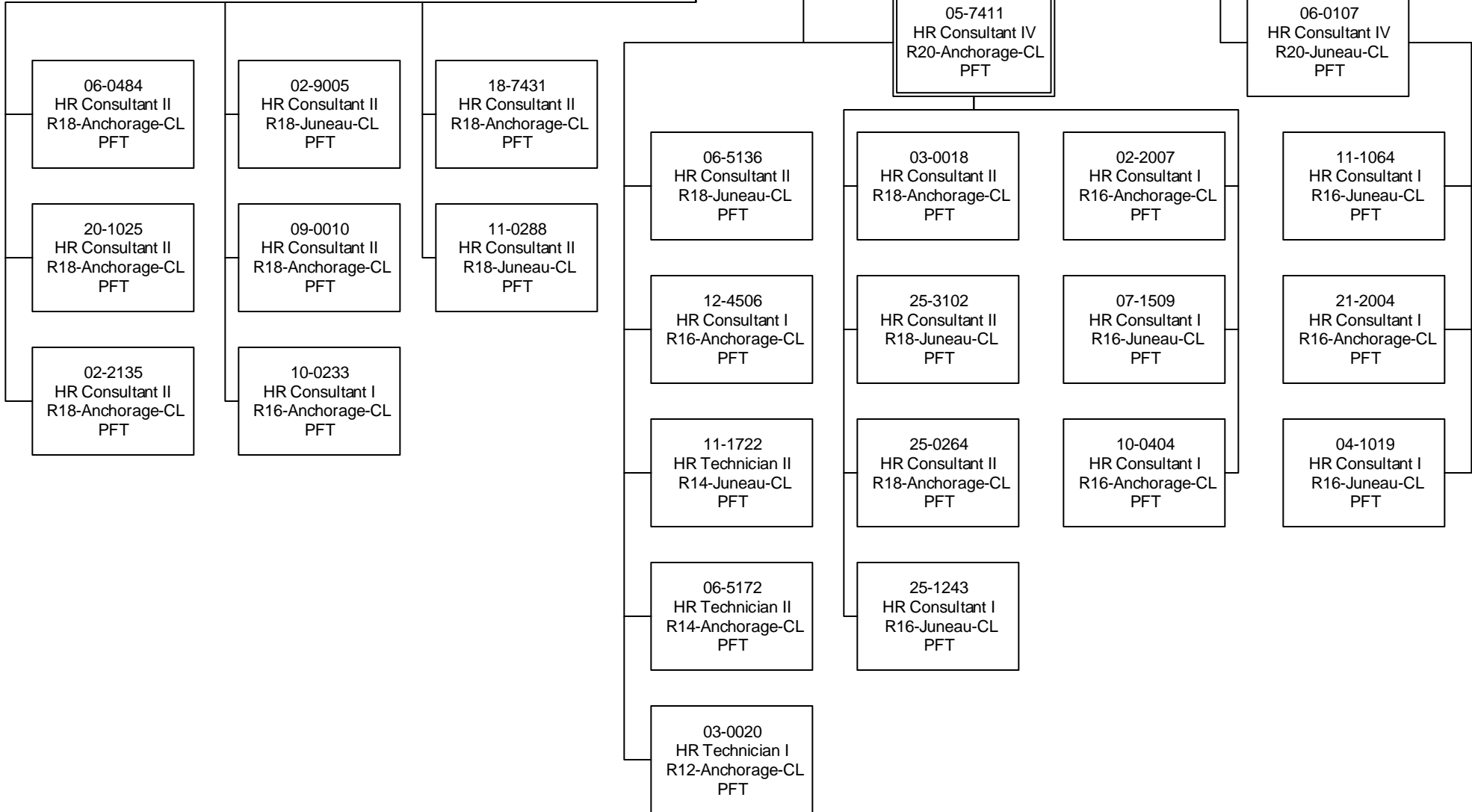
**Department of Administration**  
Personnel (56)  
Employee Relations

02-2108  
HR Consultant VI  
R24-Juneau-CL  
PFT

25-0059  
HR Consultant V  
R22-Anchorage-CL  
PFT

05-7411  
HR Consultant IV  
R20-Anchorage-CL  
PFT

06-0107  
HR Consultant IV  
R20-Juneau-CL  
PFT



Department of Administration  
Personnel (56)  
Absence Mangement

