

# **State of Alaska FY2023 Governor's Operating Budget**

## **Department of Corrections Statewide Probation and Parole Component Budget Summary**

**Component: Statewide Probation and Parole**

**Contribution to Department's Mission**

Supervise offenders residing in communities in Alaska.

**Core Services**

- Offender Supervision
- Offender Habilitation

**Major Component Accomplishments in 2021**

During FY2021 the Alaska Court System postponed many hearings due to the Novel COVID-19 pandemic. Department successfully monitored the workload without additional resources and without jeopardizing public safety.

Continued updates in the Alaska Corrections Offender Management System (ACOMS) module as part of the changes due to changing legislation and needs of the division. This includes changes in regard to Field Probation Officer (PO) desktop reporting, Presentence Investigation (PSI) listing report, filtering for the substance test report, sorting of the field contact list, the addition of a fines and restitution report, and a new report to display office appointments. Continue to coordinate efforts with stakeholders of other criminal justice agencies and departments to help maximize the effectiveness of ACOMS changes and requirements.

Continued to cultivate a blended working relationship of Pretrial Enforcement Officers and Statewide Probation and Parole Officers in many communities in an effort to provide support for each other and share resources where possible in order to provide more effective supervision and to create safer communities.

Continued partnership with Vocational Rehabilitation for career development, General Education Development (GED) and employment for offenders. The programs provide transitional jobs for offenders while they look for more permanent positions. At the same time, offenders are provided with employment training opportunities such as resume writing, on the job training, apprenticeship, vocational counseling, and supportive rehabilitation services, including case management and medical referrals.

Monitored the felony Probation Accountability with Certain Enforcement (PACE) participants within Anchorage, Bethel, Kenai, Juneau, Ketchikan, Fairbanks, and Palmer Probation Offices. Continued partnership with the Alaska Court System in the Palmer Wellness Court for participation of PACE felony offenders requiring additional support/monitoring for treatment and abstinence from substances.

Continued work and partnerships with other state departments, coalitions, and community agencies for successful reentry across the state. These efforts focus on critical issues such as employment, education, substance abuse and mental health treatment, health care services, housing, community and family support. Specific partnerships between the Department and reentry coalitions in Anchorage, Fairbanks, Mat-Su, Juneau, Kenai, Ketchikan, Dillingham and Kodiak.

Continued partnerships with the local homeless/housing coalitions and community programs in Anchorage, Dillingham, Fairbanks, Juneau, Palmer, and Kenai Probation Offices to address reentry for those parolees/probationers returning to their communities.

Continued partnership with Alaska Housing Finance Corporation (AHFC) for the Returning Home Program, formerly known as the Tenant Based Rental Assistance Program (TBRA). This program provides eligible low-income probationer/parolees with financial assistance to obtain affordable housing for up to two years. This program is now in 12 Alaska communities. Of the 85 statewide allocated homes for the Division of Pretrial, Probation and Parole (DP3) from the Alaska Housing Finance Corporation (AHFC), there was a coupon utilization rate of 70.1%. Meanwhile in Utqiagvik the partnership with Barrow Probation and the Native Village of Utqiagvik and the Tagiugmiullu Nunamiullu Housing Authority (THNA) continues. The tribes are providing support and assistance to the offenders following the

release from custody by providing temporary/transitional housing, including paying for their hotels for weeks/months.

### Key Component Challenges

Recruit, hire and retain a workforce of trained supervisors, probation officers and support staff.

Allocation of resources between probation offices and areas of the state, based on need and the fluctuating offender population.

Establishing and identifying offenders currently incarcerated that need additional assistance from the probation officers upon release.

Continuing to refine and implement policy and procedures relating to supervision standards for both urban and rural offenders that focuses on successful case planning and addresses the criminogenic needs of offenders.

Adapt practices to accommodate social distancing directives from all levels of government, while maintaining public and officer safety in a field where the “community aspect” of community supervision has been altered.

Navigating the reduction in already limited tools that community supervision offers to promote rehabilitation, due to the pandemic. (e.g. treatment and service providers).

Monitoring best practices in social responses to the changes in patterns of criminal activity due to the pandemic. (i.e. increases in domestic violence and heightened existing vulnerabilities among individuals who have or are susceptible to substance abuse).

Continue to monitor the Probation Accountability with Certain Enforcement (PACE) program statewide.

Recruitment and retention of well-trained staff to maintain public safety and successful offender reentry.

### Significant Changes in Results to be Delivered in FY2023

No changes in results delivered.

### Statutory and Regulatory Authority

- 1) Probation, Prisons, Pardons, and Prisoners (AS 33)
- 2) Welfare, Social Services and Institutions (AS 47)
- 3) Health and Safety (AS 18)
- 4) Criminal Law (AS 11)
- 5) Public Finance (AS 37)
- 6) State Government (AS 44)
- 7) Corrections (22 AAC)

Contact Information
<p><b>Contact:</b> Kelly Goode, Deputy Commissioner <b>Phone:</b> (907) 269-7397 <b>E-mail:</b> kelly.goode@alaska.gov</p>

Statewide Probation and Parole Personal Services Information				
Authorized Positions			Personal Services Costs	
	<u>FY2022</u> <u>Management</u> <u>Plan</u>	<u>FY2023</u> <u>Governor</u>		
Full-time	153	153	Annual Salaries	10,061,003
Part-time	0	0	COLA	42,088
Nonpermanent	0	0	Premium Pay	0
			Annual Benefits	6,873,092
			<i>Less 6.95% Vacancy Factor</i>	<i>(1,180,683)</i>
			Lump Sum Premium Pay	0
<b>Totals</b>	<b>153</b>	<b>153</b>	<b>Total Personal Services</b>	<b>15,795,500</b>

Position Classification Summary					
Job Class Title	Anchorage	Fairbanks	Juneau	Others	Total
Administrative Assistant 2	1	0	0	0	1
Administrative Officer 1	0	1	0	1	2
Adult Probation Officer 1	24	5	1	11	41
Adult Probation Officer 2	17	5	3	15	40
Adult Probation Officer 3	9	3	1	11	24
Adult Probation Officer 4	0	1	0	1	2
Adult Probation Officer 5	2	1	0	1	4
Adult Probation Officer 6	1	0	0	0	1
Criminal Justice Technician 1	6	0	1	3	10
Criminal Justice Technician 2	6	4	0	13	23
Office Assistant 1	1	0	0	0	1
Office Assistant 3	1	1	1	1	4
<b>Totals</b>	<b>68</b>	<b>21</b>	<b>7</b>	<b>57</b>	<b>153</b>

**Component Detail All Funds**  
**Department of Corrections**

**Component:** Statewide Probation and Parole (2826)  
**RDU:** Population Management (550)

Non-Formula Component

	FY2021 Actuals	FY2022 Conference Committee	FY2022 Authorized	FY2022 Management Plan	FY2023 Governor	FY2022 Management Plan vs FY2023 Governor	
71000 Personal Services	13,897.1	16,424.2	16,424.2	16,347.1	15,795.5	-551.6	-3.4%
72000 Travel	136.6	267.8	267.8	267.8	267.8	0.0	0.0%
73000 Services	2,145.7	1,727.7	1,727.7	1,554.0	1,554.0	0.0	0.0%
74000 Commodities	600.1	345.2	345.2	345.2	345.2	0.0	0.0%
75000 Capital Outlay	0.0	0.0	0.0	0.0	0.0	0.0	0.0%
77000 Grants, Benefits	0.0	0.0	0.0	0.0	0.0	0.0	0.0%
78000 Miscellaneous	0.0	0.0	0.0	0.0	0.0	0.0	0.0%
<b>Totals</b>	<b>16,779.5</b>	<b>18,764.9</b>	<b>18,764.9</b>	<b>18,514.1</b>	<b>17,962.5</b>	<b>-551.6</b>	<b>-3.0%</b>
<b>Fund Sources:</b>							
1004 Gen Fund (UGF)	16,779.5	18,764.9	18,764.9	18,514.1	7,962.5	-10,551.6	-57.0%
1271 ARPA Rev R (UGF)	0.0	0.0	0.0	0.0	10,000.0	10,000.0	100.0%
<b>Unrestricted General (UGF)</b>	<b>16,779.5</b>	<b>18,764.9</b>	<b>18,764.9</b>	<b>18,514.1</b>	<b>17,962.5</b>	<b>-551.6</b>	<b>-3.0%</b>
<b>Designated General (DGF)</b>	<b>0.0</b>	<b>0.0</b>	<b>0.0</b>	<b>0.0</b>	<b>0.0</b>	<b>0.0</b>	<b>0.0%</b>
<b>Other Funds</b>	<b>0.0</b>	<b>0.0</b>	<b>0.0</b>	<b>0.0</b>	<b>0.0</b>	<b>0.0</b>	<b>0.0%</b>
<b>Federal Funds</b>	<b>0.0</b>	<b>0.0</b>	<b>0.0</b>	<b>0.0</b>	<b>0.0</b>	<b>0.0</b>	<b>0.0%</b>
<b>Positions:</b>							
Permanent Full Time	154	154	154	153	153	0	0.0%
Permanent Part Time	0	0	0	0	0	0	0.0%
Non Permanent	0	0	0	0	0	0	0.0%

**Change Record Detail - Multiple Scenarios with Descriptions**  
**Department of Corrections**

**Component:** Statewide Probation and Parole (2826)

**RDU:** Population Management (550)

Scenario/Change Record Title	Trans Type	Totals	Personal Services	Travel	Services	Commodities	Capital Outlay	Grants, Benefits	Miscellaneous	Positions		NP
										PFT	PPT	
***** Changes From FY2022 Conference Committee To FY2022 Authorized *****												
<b>FY2022 Conference Committee</b>												
1004 Gen Fund	ConfCom	18,764.9	16,424.2	267.8	1,727.7	345.2	0.0	0.0	0.0	154	0	0
		18,764.9										
	<b>Subtotal</b>	<b>18,764.9</b>	<b>16,424.2</b>	<b>267.8</b>	<b>1,727.7</b>	<b>345.2</b>	<b>0.0</b>	<b>0.0</b>	<b>0.0</b>	<b>154</b>	<b>0</b>	<b>0</b>
***** Changes From FY2022 Authorized To FY2022 Management Plan *****												
<b>Transfer Adult Probation Officer 5 (20-2019) to Probation and Parole Director's Office</b>												
	PosAdj	0.0	0.0	0.0	0.0	0.0	0.0	0.0	0.0	-1	0	0
Transfer Adult Probation Officer 5 (20-2019), located in Juneau to the Probation and Parole Director's Office to oversee, monitor and update statewide regulations, policies and procedures for the Division of Pretrial, Probation and Parole (DP3).												
This position is essential to the Division due to the continuous changes in statutory and regulatory requirements for pretrial, probation and parole. Since 2015 there have been numerous legislations that have passed requiring the need for this position to maintain updated regulations, processes and procedures within the Division. This position will ensure that DP3 stays updated and in compliance with these changing laws.												
<b>Transfer General Fund Authority to Probation and Parole Director's Office</b>												
1004 Gen Fund	Trout	-250.8	-77.1	0.0	-173.7	0.0	0.0	0.0	0.0	0	0	0
		-250.8										
	<b>Subtotal</b>	<b>18,514.1</b>	<b>16,347.1</b>	<b>267.8</b>	<b>1,554.0</b>	<b>345.2</b>	<b>0.0</b>	<b>0.0</b>	<b>0.0</b>	<b>153</b>	<b>0</b>	<b>0</b>
***** Changes From FY2022 Management Plan To FY2023 Governor *****												
<b>FY2023 Salary and Benefit Adjustments</b>												
1004 Gen Fund	SalAdj	40.7	40.7	0.0	0.0	0.0	0.0	0.0	0.0	0	0	0
		40.7										
Includes: FY2023 Supervisory Unit 1% COLA: \$27.6												
FY2023 SU BU - Supervisory Employees (SS) 1% COLA: \$13.1												
<b>FY2023 PERS Actuarial Rate Adjustment to 24.79% Ch9 SLA2021 (SB55)</b>												
1004 Gen Fund	SalAdj	-511.7	-511.7	0.0	0.0	0.0	0.0	0.0	0.0	0	0	0
		-511.7										
Includes: FY2023 Adjustment for PERS ARM Board Approved Rate of 24.79% (from 30.11%): \$-511.7												

**Change Record Detail - Multiple Scenarios with Descriptions**  
**Department of Corrections**

**Component:** Statewide Probation and Parole (2826)  
**RDU:** Population Management (550)

Scenario/Change Record Title	Trans Type	Totals	Personal Services	Travel	Services	Commodities	Capital Outlay	Grants, Benefits	Miscellaneous	Positions		NP
										PFT	PPT	
<b>FY2023 Supervisory Employees Health Insurance, SBS, and Risk Management Rate Changes</b>												
	SalAdj	8.2	8.2	0.0	0.0	0.0	0.0	0.0	0.0	0	0	0
1004 Gen Fund		8.2										
FY2023 Change Supervisory Employees (SS) - Health Insurance from \$1,555 to \$1,685; SBS and Risk Management Rates: \$8.2												
<b>FY2023 General Government Unit SBS and Risk Management Rate Changes</b>												
	SalAdj	-88.8	-88.8	0.0	0.0	0.0	0.0	0.0	0.0	0	0	0
1004 Gen Fund		-88.8										
FY2023 Change General Government Unit (GG, GP, GY, GZ) - SBS, and Risk Management Rates: \$-88.8												
<b>Support the Provision of Government Services with Coronavirus State and Local Fiscal Recovery Funds</b>												
	FndChg	0.0	0.0	0.0	0.0	0.0	0.0	0.0	0.0	0	0	0
1004 Gen Fund		-10,000.0										
1271 ARPA Rev R		10,000.0										
Use federal receipts from sec. 9901, Subtitle M—Coronavirus State and Local Fiscal Recovery Funds, American Rescue Plan Act of 2021 (P.L. 117-2) for the provision of government services.												
<b>Totals</b>		<b>17,962.5</b>	<b>15,795.5</b>	<b>267.8</b>	<b>1,554.0</b>	<b>345.2</b>	<b>0.0</b>	<b>0.0</b>	<b>0.0</b>	<b>153</b>	<b>0</b>	<b>0</b>

**Line Item Detail (1676)**  
**Department of Corrections**  
**Travel**

**Component:** Statewide Probation and Parole (2826)

<b>Line Number</b>	<b>Line Name</b>		<b>FY2021 Actuals</b>	<b>FY2022 Management Plan</b>	<b>FY2023 Governor</b>
2000	Travel		136.6	267.8	267.8
<b>Object Class</b>	<b>Servicing Agency</b>	<b>Explanation</b>	<b>FY2021 Actuals</b>	<b>FY2022 Management Plan</b>	<b>FY2023 Governor</b>
<b>2000 Travel Detail Totals</b>			<b>136.6</b>	<b>267.8</b>	<b>267.8</b>
2000	In-State Employee Travel	Travel for probation officers to supervise probationers in the region. Probation officers and staff to attend continuing education and training classes, regional/statewide manager's meetings, and oversight of regional offices.	126.6	267.8	267.8
2005	Moving Costs	New employee relocation/moving expenses.	10.0	0.0	0.0



**Line Item Detail (1676)**  
**Department of Corrections**  
**Services**

**Component:** Statewide Probation and Parole (2826)

<b>Line Number</b>	<b>Line Name</b>		<b>FY2021 Actuals</b>	<b>FY2022 Management Plan</b>	<b>FY2023 Governor</b>
3000	Services		2,145.7	1,554.0	1,554.0
<b>Object Class</b>	<b>Servicing Agency</b>	<b>Explanation</b>	<b>FY2021 Actuals</b>	<b>FY2022 Management Plan</b>	<b>FY2023 Governor</b>
<b>3000 Services Detail Totals</b>			<b>2,145.7</b>	<b>1,554.0</b>	<b>1,554.0</b>
3000	Education Services	Professional service costs related to conference registration fees, training, membership dues and other miscellaneous services.	2.1	5.0	5.0
3004	Telecommunications	Local and long distance telephone services and other related miscellaneous communication charges.	90.8	5.0	5.0
3005	Health Services	Professional Services related to drug testing.	3.7	3.6	3.6
3006	Delivery Services	Freight costs, delivery and express services, postage, messenger services, etc.	46.8	10.0	10.0
3008	Utilities	Public utility services for heat, water, sewage, electricity, and waste disposal.	23.6	0.0	0.0
3009	Structure/Infrastructure/Land	Room and office leases, inspections, janitorial services, snow removal, other repairs and maintenance.	97.4	25.0	25.0
3010	Equipment/Machinery	Minor repairs and rentals of office equipment not covered by maintenance or lease agreements; e.g., copiers, mailing machines, and other office equipment.	28.2	4.3	4.3
3011	Other Services	Professional service costs related to minor repairs and rentals of office equipment, vehicles, etc., not covered by maintenance or lease	33.4	0.0	0.0

**Line Item Detail (1676)**  
**Department of Corrections**  
**Services**

**Component:** Statewide Probation and Parole (2826)

Object Class		Servicing Agency	Explanation	FY2021 Actuals	FY2022 Management Plan	FY2023 Governor
<b>3000 Services Detail Totals</b>				<b>2,145.7</b>	<b>1,554.0</b>	<b>1,554.0</b>
			agreements.			
3017	Inter-Agency Information Technology Non-Telecommunications	Admin - Department-wide	Office of Information Technology (OIT) Core Services, OIT Server Hosting & Storage, OIT Licenses for Adobe, Microsoft and SQL rates charges.	420.0	251.1	251.1
3018	Inter-Agency Information Technology Telecommunications	Admin - Department-wide	Office of Information Technology (OIT) Telephone charges.	61.7	50.0	50.0
3021	Inter-Agency Mail	Admin - Department-wide	Central Mailroom service charges.	2.5	2.0	2.0
3022	Inter-Agency Human Resources	Admin - Department-wide	Human Resource service charges.	75.1	65.4	65.4
3023	Inter-Agency Building Leases	Admin - Department-wide	Office lease space charges.	1,120.9	1,006.1	1,006.1
3023	Inter-Agency Building Leases	Trans - Department-wide	Office lease space charges.	15.3	16.0	16.0
3027	Inter-Agency Financial	Admin - Department-wide	Integrated Resource Information System (IRIS) Financial, IRIS Human Resource Management (HRM)/Payroll, Alaska Data Enterprise Reporting (ALDER) charges.	6.4	4.8	4.8
3028	Inter-Agency Americans with Disabilities Act Compliance	Admin - Department-wide	Americans with Disabilities Act (ADA) compliance charges.	1.3	0.3	0.3
3029	Inter-Agency Education/Training	PubSaf - Department-wide	Certification and Training charges.	0.4	0.4	0.4
3035	Inter-Agency Other Equipment/Machinery	Admin - Department-wide	Other equipment and machinery services.	3.8	0.0	0.0
3037	State Equipment Fleet	Trans - Department-wide	State Equipment Fleet (SEF) charges.	112.3	105.0	105.0

**Line Item Detail (1676)**  
**Department of Corrections**  
**Commodities**

**Component:** Statewide Probation and Parole (2826)

<b>Line Number</b>	<b>Line Name</b>		<b>FY2021 Actuals</b>	<b>FY2022 Management Plan</b>	<b>FY2023 Governor</b>
4000	Commodities		600.1	345.2	345.2
<b>Object Class</b>	<b>Servicing Agency</b>	<b>Explanation</b>	<b>FY2021 Actuals</b>	<b>FY2022 Management Plan</b>	<b>FY2023 Governor</b>
<b>4000 Commodities Detail Totals</b>			<b>600.1</b>	<b>345.2</b>	<b>345.2</b>
4000	Business	Consumable office supplies, duplicating, data processing supplies; i.e., paper forms, printer and toner cartridges, clothing, uniforms, cleaning supplies and other related supplies.	469.1	215.2	215.2
4002	Household/Institutional	Food, non-food supplies and clothing and uniform costs.	13.2	0.0	0.0
4003	Scientific and Medical	Drug testing reagents for immediate field testing results.	22.1	40.0	40.0
4004	Safety	Other operating supplies including law enforcement, safety and electronics, and other related supplies.	95.5	90.0	90.0
4005	Building Materials	Structural supplies including lumber and masonry materials, signs/markers, plumbing, electrical, and mechanical. Other supplies such as paint, janitorial and cleaning, lube oils, and miscellaneous hardware.	0.1	0.0	0.0
4020	Equipment Fuel	Other equipment fuel.	0.1	0.0	0.0

**Inter-Agency Services (1682)**  
**Department of Corrections**

**Component:** Statewide Probation and Parole (2826)

				FY2021 Actuals	FY2022 Management Plan	FY2023 Governor
<b>Component Totals</b>				<b>1,819.7</b>	<b>1,501.1</b>	<b>1,501.1</b>
With Department of Administration				1,691.7	1,379.7	1,379.7
With Department of Transportation/Public Facilities				127.6	121.0	121.0
With Department of Public Safety				0.4	0.4	0.4
<b>Object Class</b>	<b>Servicing Agency</b>	<b>Explanation</b>	<b>FY2021 Actuals</b>	<b>FY2022 Management Plan</b>	<b>FY2023 Governor</b>	
3017	Inter-Agency Information Technology Non-Telecommunications	Admin - Department-wide Office of Information Technology (OIT) Core Services, OIT Server Hosting & Storage, OIT Licenses for Adobe, Microsoft and SQL rates charges.	420.0	251.1	251.1	
3018	Inter-Agency Information Technology Telecommunications	Admin - Department-wide Office of Information Technology (OIT) Telephone charges.	61.7	50.0	50.0	
3021	Inter-Agency Mail	Admin - Department-wide Central Mailroom service charges.	2.5	2.0	2.0	
3022	Inter-Agency Human Resources	Admin - Department-wide Human Resource service charges.	75.1	65.4	65.4	
3023	Inter-Agency Building Leases	Admin - Department-wide Office lease space charges.	1,120.9	1,006.1	1,006.1	
3023	Inter-Agency Building Leases	Trans - Department-wide Office lease space charges.	15.3	16.0	16.0	
3027	Inter-Agency Financial	Admin - Department-wide Integrated Resource Information System (IRIS) Financial, IRIS Human Resource Management (HRM)/Payroll, Alaska Data Enterprise Reporting (ALDER) charges.	6.4	4.8	4.8	
3028	Inter-Agency Americans with Disabilities Act Compliance	Admin - Department-wide Americans with Disabilities Act (ADA) compliance charges.	1.3	0.3	0.3	
3029	Inter-Agency Education/Training	PubSaf - Department-wide Certification and Training charges.	0.4	0.4	0.4	
3035	Inter-Agency Other Equipment/Machinery	Admin - Department-wide Other equipment and machinery services.	3.8	0.0	0.0	
3037	State Equipment Fleet	Trans - Department-wide State Equipment Fleet (SEF) charges.	112.3	105.0	105.0	

**Personal Services Expenditure Detail**  
**Department of Corrections**

**Scenario:** FY2023 Governor (18673)  
**Component:** Statewide Probation and Parole (2826)  
**RDU:** Population Management (550)

PCN	Job Class Title	Time Status	Retire Code	Barg Unit	Location	Salary Sched	Range / Step	Comp Months	Split / Count	Annual Salaries	COLA	Premium Pay	Annual Benefits	Total Costs	UGF Amount
20-0004	Adult Probation Officer 6	FT	P	SS	Anchorage	100	24O	12.0		141,003	1,964	0	75,739	218,706	218,706
20-0010	Criminal Justice Technician 2	FT	A	GP	Fairbanks	203	14C / D	12.0		50,915	0	0	38,771	89,686	89,686
20-4400	Adult Probation Officer 1	FT	P	GP	Anchorage	100	14A	12.0		45,942	0	0	36,818	82,760	82,760
20-4401	Administrative Officer 1	FT	A	GP	Fairbanks	203	17A	12.0		57,662	0	0	41,419	99,081	99,081
20-4403	Criminal Justice Technician 1	FT	A	GP	Anchorage	200	12A / B	12.0		41,282	0	0	34,989	76,271	76,271
20-4404	Adult Probation Officer 3	FT	P	SS	Fairbanks	103	18K / L	12.0		88,263	1,229	0	55,033	144,525	144,525
20-4405	Adult Probation Officer 1	FT	P	GP	Fairbanks	103	14A	12.0		47,327	0	0	37,362	84,689	84,689
20-4406	Adult Probation Officer 1	FT	P	GP	Fairbanks	103	14A / B	12.0		48,906	0	0	37,982	86,888	86,888
20-4407	Adult Probation Officer 1	FT	P	GP	Anchorage	100	14A	12.0		45,942	0	0	36,818	82,760	82,760
20-4408	Adult Probation Officer 2	FT	P	GP	Juneau	105	16C / D	12.0		59,626	0	0	42,190	101,816	101,816
20-4409	Adult Probation Officer 1	FT	P	GP	Fairbanks	103	14A	12.0		47,327	0	0	37,362	84,689	84,689
20-4411	Criminal Justice Technician 2	FT	A	GP	Fairbanks	203	14C / D	12.0		51,929	0	0	39,169	91,098	91,098
20-4412	Adult Probation Officer 3	FT	P	SS	Utqiagvik	550	18L	12.0		127,462	1,775	0	70,423	199,660	199,660
20-4413	Criminal Justice Technician 2	FT	A	GP	Utqiagvik	250	14G	12.0		83,987	0	0	51,755	135,742	135,742
20-4415	Adult Probation Officer 2	FT	P	GP	Fairbanks	103	16M / N	12.0		77,784	0	0	49,319	127,103	127,103
20-4416	Criminal Justice Technician 2	FT	A	GP	Bethel	250	14C / D	12.0		73,122	0	0	47,489	120,611	120,611
20-4417	Adult Probation Officer 3	FT	P	SS	Anchorage	100	18M	12.0		88,587	1,234	0	55,161	144,982	144,982
20-4418	Adult Probation Officer 5	FT	P	SS	Palmer	100	22J / K	12.0		105,241	1,466	0	61,699	168,406	168,406
20-4419	Criminal Justice Technician 1	FT	A	GP	Nome	237	12C / D	12.0		58,845	0	0	41,884	100,729	100,729
20-4420	Adult Probation Officer 3	FT	P	SS	Bethel	150	18A / B	12.0		102,128	1,422	0	60,477	164,027	164,027
20-4421	Adult Probation Officer 1	FT	P	GP	Palmer	100	14B / C	12.0		48,477	0	0	37,813	86,290	86,290
20-4422	Adult Probation Officer 1	FT	P	GP	Bethel	150	14A	12.0		68,913	0	0	45,837	114,750	114,750
20-4426	Adult Probation Officer 3	FT	P	SS	Fairbanks	103	18K / L	12.0		88,263	1,229	0	55,033	144,525	144,525
20-4427	Adult Probation Officer 3	FT	P	SS	Anchorage	99	18Q	12.0		100,152	1,395	0	59,701	161,248	161,248
20-4428	Adult Probation Officer 2	FT	P	GP	Fairbanks	103	16E / F	12.0		64,236	0	0	44,000	108,236	108,236
20-4429	Adult Probation Officer 2	FT	P	GP	Fairbanks	103	16J	12.0		69,830	0	0	46,197	116,027	116,027
20-4430	Office Assistant 3	FT	A	GP	Fairbanks	203	11D / E	12.0		43,182	0	0	35,735	78,917	78,917
20-4431	Criminal Justice Technician 2	FT	A	GP	Kotzebue	260	14E / F	12.0		86,535	0	0	52,755	139,290	139,290
20-4433	Adult Probation Officer 2	FT	P	GP	Anchorage	100	16N	12.0		77,045	0	0	49,029	126,074	126,074
20-4436	Criminal Justice Technician 2	FT	A	GP	Bethel	250	14K / L	12.0		91,216	0	0	54,593	145,809	145,809
20-4437	Criminal Justice Technician	FT	A	GP	Fairbanks	203	14L / M	12.0		64,927	0	0	44,272	109,199	109,199

Note: If a position is split, an asterisk (\*) will appear in the Split/Count column. If the split position is also counted in the component, two asterisks (\*\*) will appear in this column. [No valid job title] appearing in the Job Class Title indicates that the PCN has an invalid class code or invalid range for the class code effective date of this scenario.

**Personal Services Expenditure Detail**  
**Department of Corrections**

**Scenario:** FY2023 Governor (18673)  
**Component:** Statewide Probation and Parole (2826)  
**RDU:** Population Management (550)

PCN	Job Class Title	Time Status	Retire Code	Barg Unit	Location	Salary Sched	Range / Step	Comp Months	Split / Count	Annual Salaries	COLA	Premium Pay	Annual Benefits	Total Costs	UGF Amount
	2														
20-4438	Adult Probation Officer 3	FT	P	SS	Nome	537	18M	12.0		120,203	1,674	0	67,573	189,450	189,450
20-4439	Adult Probation Officer 1	FT	P	GP	Fairbanks	103	14A	12.0		47,327	0	0	37,362	84,689	84,689
20-4440	Adult Probation Officer 3	FT	P	SS	Fairbanks	103	18F / J	12.0		81,752	1,138	0	52,477	135,367	135,367
20-4443	Adult Probation Officer 4	FT	P	SS	Kenai	100	20O	12.0		107,827	1,502	0	62,714	172,043	172,043
20-4449	Adult Probation Officer 1	FT	P	GP	Palmer	100	14D / E	12.0		51,419	0	0	38,968	90,387	90,387
20-4450	Adult Probation Officer 2	FT	P	GP	Palmer	100	16E / F	12.0		62,454	0	0	43,301	105,755	105,755
20-4451	Adult Probation Officer 2	FT	P	GP	Palmer	100	16J / K	12.0		69,454	0	0	46,049	115,503	115,503
20-4452	Adult Probation Officer 2	FT	P	GP	Palmer	100	16F / G	12.0		64,156	0	0	43,969	108,125	108,125
20-4454	Adult Probation Officer 1	FT	P	GP	Anchorage	100	14A	12.0		45,942	0	0	36,818	82,760	82,760
20-4455	Adult Probation Officer 1	FT	P	GP	Anchorage	100	14A	12.0		45,942	0	0	36,818	82,760	82,760
20-4456	Adult Probation Officer 2	FT	P	GP	Ketchikan	100	16O	12.0		79,541	0	0	50,009	129,550	129,550
20-4457	Adult Probation Officer 2	FT	P	GP	Anchorage	100	16M / N	12.0		75,332	0	0	48,357	123,689	123,689
20-4458	Adult Probation Officer 2	FT	P	GP	Kenai	100	16G / J	12.0		65,464	0	0	44,483	109,947	109,947
20-4459	Adult Probation Officer 1	FT	P	GP	Anchorage	100	14A	12.0		45,942	0	0	36,818	82,760	82,760
20-4460	Adult Probation Officer 1	FT	P	GP	Anchorage	100	14B / C	12.0		48,574	0	0	37,851	86,425	86,425
20-4461	Adult Probation Officer 2	FT	P	GP	Palmer	99	16M / N	12.0		76,584	0	0	48,848	125,432	125,432
20-4462	Adult Probation Officer 2	FT	P	GP	Fairbanks	103	16D / E	12.0		60,905	0	0	42,693	103,598	103,598
20-4463	Adult Probation Officer 1	FT	P	GP	Anchorage	100	14A	12.0		45,942	0	0	36,818	82,760	82,760
20-4464	Adult Probation Officer 2	FT	P	GP	Anchorage	100	16C / D	12.0		56,875	0	0	41,110	97,985	97,985
20-4465	Adult Probation Officer 1	FT	P	GP	Anchorage	100	14A	12.0		45,942	0	0	36,818	82,760	82,760
20-4470	Adult Probation Officer 1	FT	P	GP	Bethel	150	14A	12.0		68,913	0	0	45,837	114,750	114,750
20-4471	Adult Probation Officer 1	FT	P	GP	Anchorage	100	14A	12.0		45,942	0	0	36,818	82,760	82,760
20-4472	Adult Probation Officer 5	FT	P	SS	Fairbanks	103	22O	12.0		126,859	1,767	0	70,186	198,812	198,812
20-4473	Adult Probation Officer 1	FT	P	GP	Palmer	100	14B / C	12.0		48,988	0	0	38,014	87,002	87,002
20-4474	Adult Probation Officer 1	FT	P	GP	Anchorage	100	14E / F	12.0		53,333	0	0	39,720	93,053	93,053
20-4475	Adult Probation Officer 2	FT	P	GP	Anchorage	100	16B / C	12.0		55,370	0	0	40,520	95,890	95,890
20-4476	Adult Probation Officer 1	FT	P	GP	Bethel	150	14A / B	12.0		71,234	0	0	46,748	117,982	117,982
20-4477	Adult Probation Officer 2	FT	P	GP	Fairbanks	103	16G	12.0		67,080	0	0	45,117	112,197	112,197
20-4478	Office Assistant 3	FT	A	GP	Juneau	105	11A	12.0		40,073	0	0	34,514	74,587	74,587
20-4479	Criminal Justice Technician	FT	A	GP	Anchorage	100	14F / G	12.0		56,145	0	0	40,824	96,969	96,969
	2														
20-4480	Criminal Justice Technician	FT	A	GP	Fairbanks	103	14B / C	12.0		49,178	0	0	38,089	87,267	87,267
	2														
20-4481	Criminal Justice Technician	FT	A	GP	Ketchikan	100	14D / E	12.0		52,060	0	0	39,220	91,280	91,280
	2														
20-4482	Criminal Justice Technician	FT	A	GP	Palmer	100	14K / L	12.0		62,177	0	0	43,192	105,369	105,369
	2														
20-4483	Criminal Justice Technician	FT	A	GP	Anchorage	100	14C / D	12.0		50,175	0	0	38,480	88,655	88,655

Note: If a position is split, an asterisk (\*) will appear in the Split/Count column. If the split position is also counted in the component, two asterisks (\*\*) will appear in this column. [No valid job title] appearing in the Job Class Title indicates that the PCN has an invalid class code or invalid range for the class code effective date of this scenario.

**Personal Services Expenditure Detail**  
**Department of Corrections**

**Scenario:** FY2023 Governor (18673)  
**Component:** Statewide Probation and Parole (2826)  
**RDU:** Population Management (550)

PCN	Job Class Title	Time Status	Retire Code	Barg Unit	Location	Salary Sched	Range / Step	Comp Months	Split / Count	Annual Salaries	COLA	Premium Pay	Annual Benefits	Total Costs	UGF Amount
	2														
20-4485	Adult Probation Officer 2	FT	P	GP	Kenai	100	16D / E	12.0		60,011	0	0	42,342	102,353	102,353
20-4486	Adult Probation Officer 2	FT	P	GP	Juneau	105	16E / F	12.0		65,177	0	0	44,370	109,547	109,547
20-5019	Office Assistant 3	FT	A	GP	Palmer	200	11K	12.0		48,965	0	0	38,005	86,970	86,970
20-5400	Adult Probation Officer 1	FT	P	GP	Juneau	105	14A	12.0		48,243	0	0	37,722	85,965	85,965
20-5402	Adult Probation Officer 3	FT	P	SS	Juneau	105	18L	12.0		90,085	1,255	0	55,749	147,089	147,089
20-5403	Adult Probation Officer 4	FT	P	SS	Fairbanks	103	20L / M	12.0		104,132	1,450	0	61,264	166,846	166,846
20-5405	Adult Probation Officer 5	FT	P	SS	Anchorage	100	22C / D	12.0		93,510	1,302	0	57,093	151,905	151,905
20-5406	Criminal Justice Technician	FT	A	GP	Juneau	205	12A	12.0		42,062	0	0	35,295	77,357	77,357
	1														
20-5407	Adult Probation Officer 3	FT	P	SS	Ketchikan	100	18J / K	12.0		82,987	1,156	0	52,962	137,105	137,105
20-5408	Adult Probation Officer 2	FT	P	GP	Ketchikan	100	16F / G	12.0		64,422	0	0	44,073	108,495	108,495
20-5409	Criminal Justice Technician	FT	A	GP	Ketchikan	200	14Q	12.0		72,989	0	0	47,437	120,426	120,426
	2														
20-5410	Criminal Justice Technician	FT	A	GP	Sitka	99	14P / Q	12.0		74,927	0	0	48,198	123,125	123,125
	2														
20-5413	Adult Probation Officer 3	FT	P	SS	Sitka	505	18O	12.0		98,218	1,368	0	58,942	158,528	158,528
20-5419	Adult Probation Officer 2	FT	P	GP	Kenai	100	16J / K	12.0		68,536	0	0	45,689	114,225	114,225
20-5420	Criminal Justice Technician	FT	A	GP	Anchorage	200	12C / D	12.0		42,720	0	0	35,553	78,273	78,273
	1														
20-5423	Adult Probation Officer 1	FT	P	GP	Kenai	100	14E / F	12.0		54,254	0	0	40,081	94,335	94,335
20-5424	Criminal Justice Technician	FT	A	GP	Anchorage	200	12B / C	12.0		42,654	0	0	35,527	78,181	78,181
	1														
20-6412	Adult Probation Officer 1	FT	P	GP	Anchorage	100	14A	12.0		45,942	0	0	36,818	82,760	82,760
20-6431	Adult Probation Officer 3	FT	P	SS	Anchorage	99	18O / P	12.0		95,236	1,326	0	57,771	154,333	154,333
20-6707	Adult Probation Officer 1	FT	P	GP	Anchorage	100	14A	12.0		45,942	0	0	36,818	82,760	82,760
20-6779	Adult Probation Officer 3	FT	P	SS	Dillingham	537	18K / L	12.0		116,336	1,620	0	66,055	184,011	184,011
20-6803	Adult Probation Officer 3	FT	P	SS	Anchorage	100	18E / F	12.0		77,818	1,084	0	50,933	129,835	129,835
20-6804	Adult Probation Officer 1	FT	P	GP	Anchorage	100	14A / B	12.0		47,483	0	0	37,423	84,906	84,906
20-6805	Adult Probation Officer 1	FT	P	GP	Palmer	100	14A	12.0		45,942	0	0	36,818	82,760	82,760
20-6806	Criminal Justice Technician	FT	A	GP	Anchorage	200	14C / D	12.0		49,277	0	0	38,127	87,404	87,404
	2														
20-6807	Adult Probation Officer 1	FT	P	GP	Anchorage	100	14A / B	12.0		47,483	0	0	37,423	84,906	84,906
20-6808	Adult Probation Officer 2	FT	P	GP	Anchorage	100	16C / D	12.0		57,876	0	0	41,503	99,379	99,379
20-6809	Adult Probation Officer 2	FT	P	GP	Anchorage	100	16L / M	12.0		72,482	0	0	47,238	119,720	119,720
20-6810	Adult Probation Officer 1	FT	P	GP	Anchorage	100	14B / C	12.0		48,795	0	0	37,938	86,733	86,733
20-6811	Office Assistant 3	FT	A	GP	Anchorage	200	11A	12.0		37,830	0	0	33,633	71,463	71,463
20-6812	Criminal Justice Technician	FT	A	GP	Anchorage	200	12A / B	12.0		41,282	0	0	34,989	76,271	76,271
	1														

Note: If a position is split, an asterisk (\*) will appear in the Split/Count column. If the split position is also counted in the component, two asterisks (\*\*) will appear in this column. [No valid job title] appearing in the Job Class Title indicates that the PCN has an invalid class code or invalid range for the class code effective date of this scenario.

**Personal Services Expenditure Detail**  
**Department of Corrections**

**Scenario:** FY2023 Governor (18673)  
**Component:** Statewide Probation and Parole (2826)  
**RDU:** Population Management (550)

PCN	Job Class Title	Time Status	Retire Code	Barg Unit	Location	Salary Sched	Range / Step	Comp Months	Split / Count	Annual Salaries	COLA	Premium Pay	Annual Benefits	Total Costs	UGF Amount
20-6813	Office Assistant 1	FT	A	GP	Anchorage	200	8A	12.0		31,551	0	0	31,168	62,719	62,719
20-6815	Adult Probation Officer 3	FT	P	SS	Anchorage	100	18A / B	12.0		68,078	948	0	47,109	116,135	116,135
20-6816	Adult Probation Officer 3	FT	P	SS	Anchorage	100	18J / K	12.0		82,441	1,148	0	52,748	136,337	136,337
20-6818	Adult Probation Officer 1	FT	P	GP	Anchorage	100	14A	12.0		45,942	0	0	36,818	82,760	82,760
20-6819	Adult Probation Officer 3	FT	P	SS	Anchorage	100	18A / B	12.0		68,078	948	0	47,109	116,135	116,135
20-6820	Adult Probation Officer 2	FT	P	GP	Anchorage	100	16G	12.0		65,130	0	0	44,351	109,481	109,481
20-6821	Adult Probation Officer 2	FT	P	GP	Juneau	105	16B / C	12.0		58,505	0	0	41,750	100,255	100,255
20-6822	Adult Probation Officer 1	FT	P	GP	Anchorage	100	14A	12.0		45,942	0	0	36,818	82,760	82,760
20-6823	Adult Probation Officer 2	FT	P	GP	Anchorage	100	16K	12.0		70,005	0	0	46,265	116,270	116,270
20-6824	Adult Probation Officer 2	FT	P	GP	Anchorage	100	16E / F	12.0		61,995	0	0	43,121	105,116	105,116
20-6825	Adult Probation Officer 3	FT	P	SS	Anchorage	100	18K / L	12.0		85,800	1,195	0	54,066	141,061	141,061
20-6826	Adult Probation Officer 2	FT	P	GP	Anchorage	100	16C / D	12.0		57,694	0	0	41,432	99,126	99,126
20-6827	Adult Probation Officer 1	FT	P	GP	Anchorage	100	14A	12.0		45,942	0	0	36,818	82,760	82,760
20-6828	Adult Probation Officer 2	FT	P	GP	Anchorage	100	16Q	12.0		84,806	0	0	52,076	136,882	136,882
20-6829	Adult Probation Officer 1	FT	P	GP	Anchorage	100	14A / B	12.0		47,483	0	0	37,423	84,906	84,906
20-6830	Adult Probation Officer 1	FT	P	GP	Anchorage	100	14A	12.0		45,942	0	0	36,818	82,760	82,760
20-6833	Administrative Assistant 2	FT	A	GP	Anchorage	200	14B / C	12.0		47,685	0	0	37,502	85,187	85,187
20-6835	Administrative Officer 1	FT	A	GP	Palmer	200	17M	12.0		79,053	0	0	49,818	128,871	128,871
20-6836	Criminal Justice Technician 1	FT	A	GP	Anchorage	200	12B / C	12.0		42,228	0	0	35,360	77,588	77,588
20-6837	Adult Probation Officer 2	FT	P	GP	Anchorage	100	16G	12.0		65,130	0	0	44,351	109,481	109,481
20-6838	Criminal Justice Technician 2	FT	A	GP	Anchorage	99	14N / O	12.0		67,498	0	0	45,281	112,779	112,779
20-6839	Criminal Justice Technician 2	FT	A	GP	Palmer	200	14D / E	12.0		51,543	0	0	39,017	90,560	90,560
20-6840	Criminal Justice Technician 2	FT	A	GP	Anchorage	200	14D / E	12.0		50,712	0	0	38,691	89,403	89,403
20-6841	Adult Probation Officer 3	FT	P	SS	Kodiak	511	18F	12.0		85,654	1,193	0	54,009	140,856	140,856
20-6842	Adult Probation Officer 3	FT	P	SS	Kenai	100	18N / O	12.0		92,375	1,286	0	56,648	150,309	150,309
20-6843	Adult Probation Officer 2	FT	P	GP	Kenai	99	16R / S	12.0		89,642	0	0	53,975	143,617	143,617
20-6844	Criminal Justice Technician 1	FT	A	GP	Kenai	200	12A	12.0		40,053	0	0	34,506	74,559	74,559
20-6845	Adult Probation Officer 3	FT	P	SS	Anchorage	100	18K / L	12.0		83,659	1,165	0	53,226	138,050	138,050
20-6846	Criminal Justice Technician 2	FT	A	GP	Kodiak	211	14E / F	12.0		59,765	0	0	42,245	102,010	102,010
20-6847	Adult Probation Officer 3	FT	P	SS	Palmer	100	18L / M	12.0		86,497	1,205	0	54,340	142,042	142,042
20-6848	Criminal Justice Technician 1	FT	A	GP	Palmer	200	12C / D	12.0		42,873	0	0	35,613	78,486	78,486
20-6849	Adult Probation Officer 2	FT	P	GP	Anchorage	100	16F / G	12.0		64,864	0	0	44,247	109,111	109,111

Note: If a position is split, an asterisk (\*) will appear in the Split/Count column. If the split position is also counted in the component, two asterisks (\*\*) will appear in this column. [No valid job title] appearing in the Job Class Title indicates that the PCN has an invalid class code or invalid range for the class code effective date of this scenario.



**Personal Services Expenditure Detail**  
**Department of Corrections**

**Scenario:** FY2023 Governor (18673)  
**Component:** Statewide Probation and Parole (2826)  
**RDU:** Population Management (550)

PCN	Job Class Title	Time Status	Retire Code	Barg Unit	Location	Salary Sched	Range / Step	Comp Months	Split / Count	Annual Salaries	COLA	Premium Pay	Annual Benefits	Total Costs	UGF Amount
20-6850	Adult Probation Officer 2	FT	P	GP	Kenai	100	16E / F	12.0		61,701	0	0	43,005	104,706	104,706
20-6852	Adult Probation Officer 1	FT	P	GP	Anchorage	100	14A / B	12.0		47,483	0	0	37,423	84,906	84,906
20-6853	Adult Probation Officer 1	FT	P	GP	Palmer	100	14A	12.0		45,942	0	0	36,818	82,760	82,760
20-6854	Adult Probation Officer 2	FT	P	GP	Anchorage	100	16B / C	12.0		55,911	0	0	40,732	96,643	96,643
20-6855	Adult Probation Officer 2	FT	P	GP	Bethel	150	16C / D	12.0		86,268	0	0	52,650	138,918	138,918
20-6856	Adult Probation Officer 2	FT	P	GP	Anchorage	100	16J	12.0		67,802	0	0	45,400	113,202	113,202
20-6857	Adult Probation Officer 1	FT	P	GP	Anchorage	100	14A / B	12.0		47,483	0	0	37,423	84,906	84,906
20-6859	Criminal Justice Technician 2	FT	A	GP	Kenai	200	14J	12.0		58,344	0	0	41,687	100,031	100,031
20-6860	Adult Probation Officer 1	FT	P	GP	Palmer	100	14A	12.0		45,942	0	0	36,818	82,760	82,760
20-6861	Adult Probation Officer 2	FT	P	GP	Kenai	99	16Q / R	12.0		86,066	0	0	52,571	138,637	138,637
20-6863	Adult Probation Officer 1	FT	P	GP	Bethel	150	14A	12.0		68,913	0	0	45,837	114,750	114,750
20-6864	Criminal Justice Technician 2	FT	A	GP	Dillingham	237	14L	12.0		85,196	0	0	52,229	137,425	137,425
20-6866	Adult Probation Officer 2	FT	P	GP	Anchorage	100	16L / M	12.0		74,237	0	0	47,927	122,164	122,164
20-6867	Adult Probation Officer 1	FT	P	GP	Anchorage	100	14A	12.0		45,942	0	0	36,818	82,760	82,760
20-6868	Criminal Justice Technician 1	FT	A	GP	Anchorage	200	12A	12.0		40,053	0	0	34,506	74,559	74,559
20-6869	Criminal Justice Technician 2	FT	A	GP	Palmer	200	14K	12.0		60,236	0	0	42,430	102,666	102,666
20-6870	Adult Probation Officer 3	FT	P	SS	Palmer	99	18N / O	12.0		91,598	1,276	0	56,343	149,217	149,217
20-6871	Criminal Justice Technician 2	FT	A	GP	Anchorage	200	14B / C	12.0		47,461	0	0	37,415	84,876	84,876
20-6872	Adult Probation Officer 2	FT	P	GP	Nome	137	16D / E	12.0		81,621	0	0	50,826	132,447	132,447
20-6873	Adult Probation Officer 2	FT	P	GP	Anchorage	100	16N / O	12.0		77,357	0	0	49,152	126,509	126,509
20-6875	Adult Probation Officer 2	FT	P	GP	Palmer	100	16D / E	12.0		59,467	0	0	42,128	101,595	101,595
20-6876	Adult Probation Officer 1	FT	P	GP	Fairbanks	103	14A	12.0		47,327	0	0	37,362	84,689	84,689
20-6877	Adult Probation Officer 3	FT	P	SS	Kotzebue	560	18L / M	12.0		136,872	1,906	0	74,117	212,895	212,895
20-6880	Adult Probation Officer 1	FT	P	GP	Anchorage	100	14A / B	12.0		47,483	0	0	37,423	84,906	84,906
20-7202	Adult Probation Officer 5	FT	P	SS	Anchorage	100	22J	12.0		104,957	1,462	0	61,587	168,006	168,006

Note: If a position is split, an asterisk (\*) will appear in the Split/Count column. If the split position is also counted in the component, two asterisks (\*\*) will appear in this column. [No valid job title] appearing in the Job Class Title indicates that the PCN has an invalid class code or invalid range for the class code effective date of this scenario.

**Personal Services Expenditure Detail**  
**Department of Corrections**

**Scenario:** FY2023 Governor (18673)  
**Component:** Statewide Probation and Parole (2826)  
**RDU:** Population Management (550)

PCN	Job Class Title	Time Status	Retire Code	Barg Unit	Location	Salary Sched	Range / Step	Comp Months	Split / Count	Annual Salaries	COLA	Premium Pay	Annual Benefits	Total Costs	UGF Amount
		<b>Total Positions</b>	<b>New</b>	<b>Deleted</b>										<b>Total Salary Costs:</b>	10,061,003
														<b>Total COLA:</b>	42,088
	<b>Full Time Positions:</b>	153	0	0										<b>Total Premium Pay:</b>	0
	<b>Part Time Positions:</b>	0	0	0										<b>Total Benefits:</b>	6,873,092
	<b>Non Permanent Positions:</b>	0	0	0											
	<b>Positions in Component:</b>	153	0	0											
	<b>Total Component Months:</b>	1,836.0													
														<b>Total Pre-Vacancy:</b>	16,976,183
														<b>Minus Vacancy Adjustment of 6.95%:</b>	(1,180,683)
														<b>Total Post-Vacancy:</b>	15,795,500
														<b>Plus Lump Sum Premium Pay:</b>	0
														<b>Personal Services Line 100:</b>	15,795,500

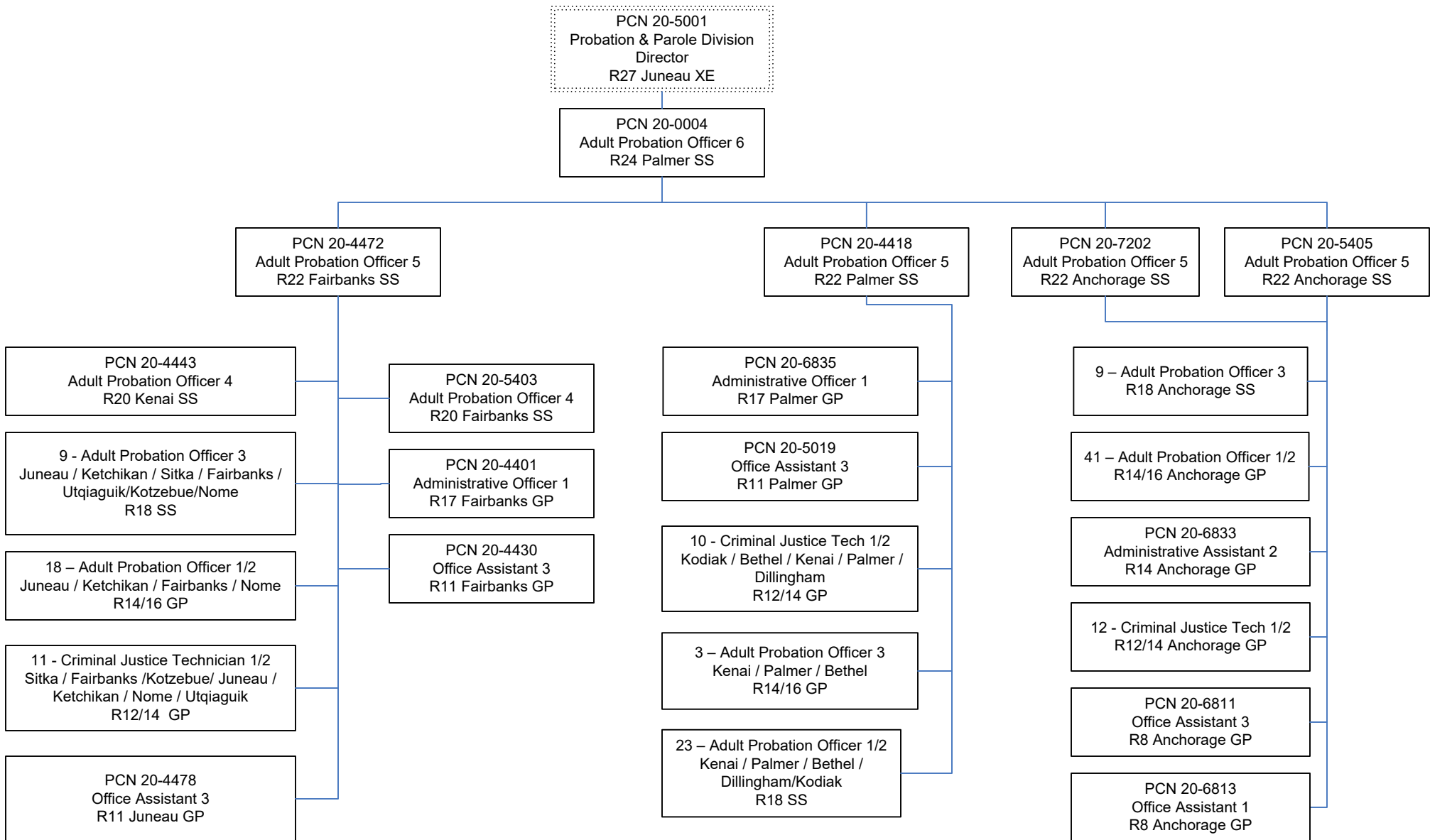
<b>PCN Funding Sources:</b>	<b>Pre-Vacancy</b>	<b>Post-Vacancy</b>	<b>Percent</b>
1004 General Fund Receipts	16,976,183	15,795,500	100.00%
<b>Total PCN Funding:</b>	<b>16,976,183</b>	<b>15,795,500</b>	<b>100.00%</b>

Note: If a position is split, an asterisk (\*) will appear in the Split/Count column. If the split position is also counted in the component, two asterisks (\*\*) will appear in this column. [No valid job title] appearing in the Job Class Title indicates that the PCN has an invalid class code or invalid range for the class code effective date of this scenario.

# Department of Corrections

## Statewide Probation & Parole

### FY 2023 Organizational Structure



Note: Boxes with dotted lines are budgeted within a separate component.