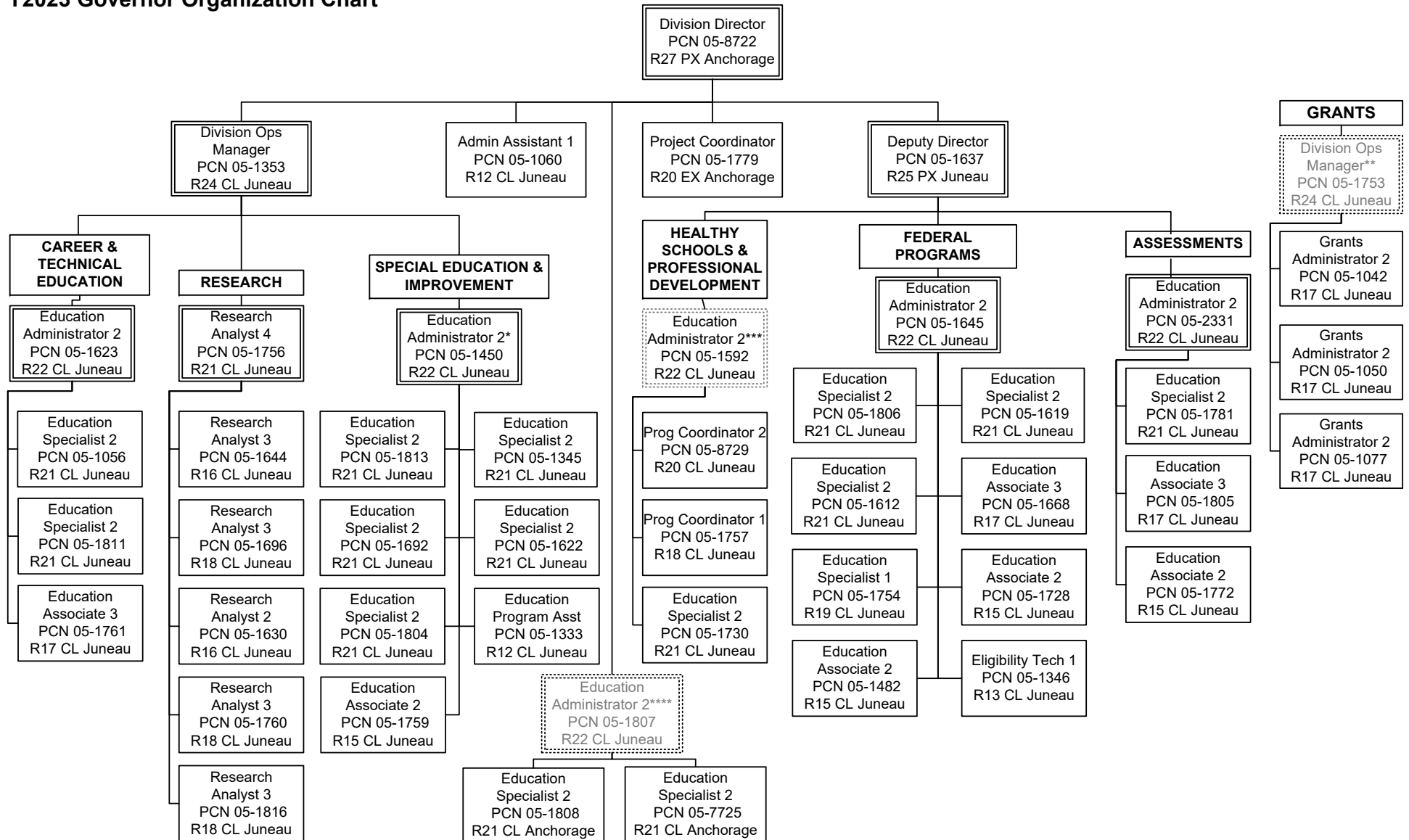


**State of Alaska**  
**Department of Education and Early Development**  
**Student & School Achievement (2796)**  
**FY2023 Governor Organization Chart**



\* PCN 05-1450 also supervises PCN 05-1705 in the Early Learning component.  
 \*\* PCN 05-1753 also supervises multiple PCNs in the Administrative Services component.  
 \*\*\* PCN 05-1592 also supervises multiple PCNs in the Teacher Certification component.  
 \*\*\*\* PCN 05-1807 also supervises multiple PCNs in the State System of Support component.