

Department of Family and Community Services
 Office of Children's Services
 Children's Services Management (2666)
 FY2023 Governor

Division Operations Manager
 06-3041
 R24 CL
 Anchorage

Social Services
 Program Administrator
 06-3871
 R23 CL
 Juneau

Data Processing
 Manager 1
 06-9304
 R22 CL
 Anchorage

Nurse
 Consultant 2
 06-4606
 R26 CL
 Anchorage

Social Services
 Program Officer
 06-4564
 R21 CL
 Wasilla

Social Services
 Program Officer
 06-3068
 R21 CL
 Juneau

Social Services
 Program Officer
 06-9300
 R21 CL
 Wasilla

Social Services
 Program
 Coordinator
 06-9171
 R20 CL
 Anchorage

Research
 Analyst 4
 06-3962
 R21 CL
 Juneau

Social Services
 Program
 Coordinator
 06-4588
 R20 CL
 Juneau

Social Services
 Program
 Coordinator
 06-3709
 R20 CL
 Juneau

Protective Services
 Specialist 3
 06-4636
 R19 CL
 Juneau

Social Services
 Program
 Coordinator
 06-9168
 R20 CL
 Anchorage

Research
 Analyst 3
 06-3705
 R18 CL
 Juneau

Program
 Coordinator 1
 06-3972
 R18 CL
 Juneau

Social Services
 Program
 Coordinator
 06-4637
 R20 CL
 Juneau

Social Services
 Program
 Coordinator
 06-3457
 R20 CL
 Juneau

Protective Services
 Specialist 2
 06-3926
 R17 CL
 Anchorage

Research
 Analyst 3
 06-4570
 R18 CL
 Juneau

Program
 Coordinator 1
 06-9294
 R18 CL
 Juneau

Protective Services
 Specialist 4
 06-1350
 R20 CL
 Juneau

Social Services
 Associate
 06-3011
 R12 CL
 Juneau

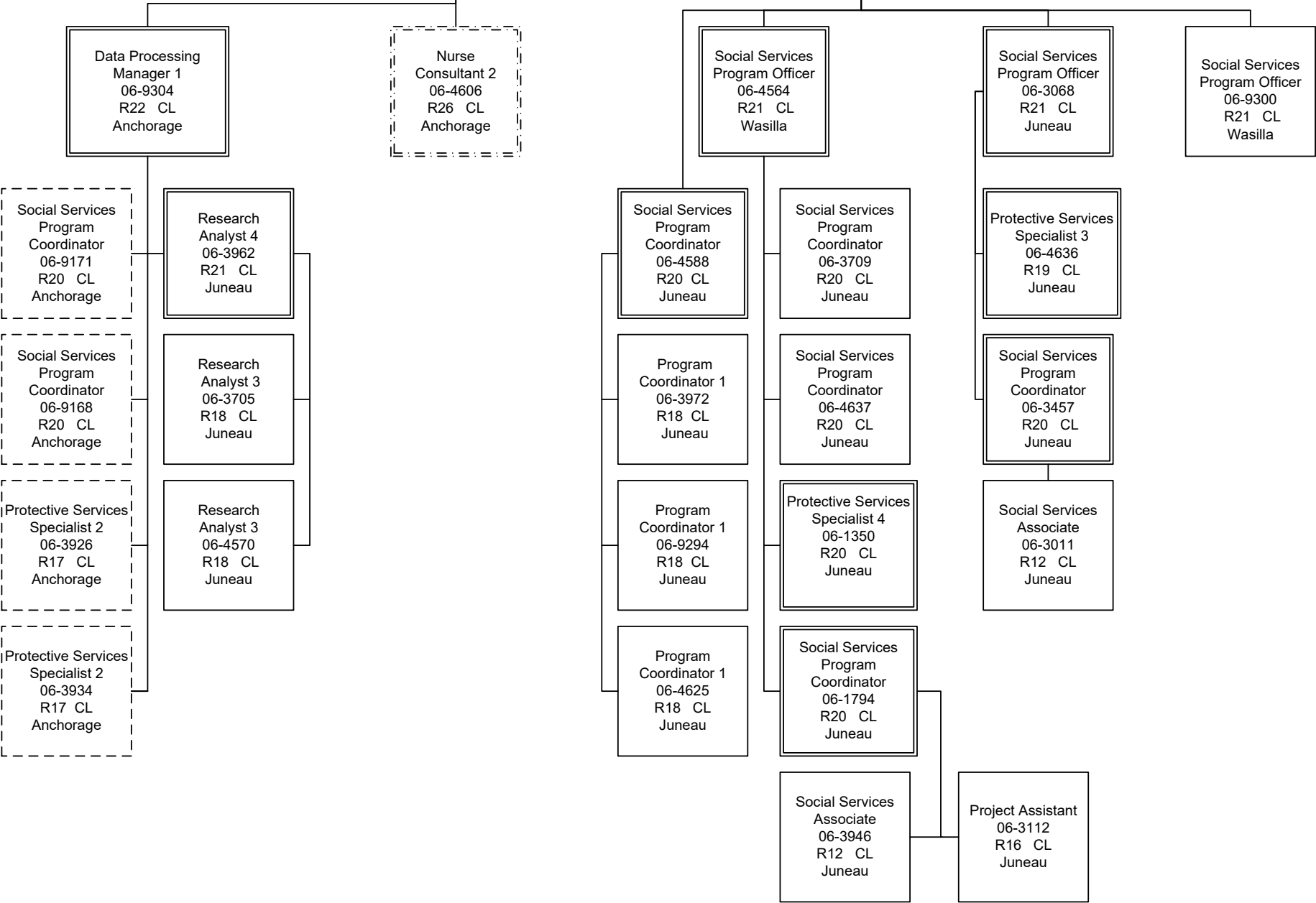
Protective Services
 Specialist 2
 06-3934
 R17 CL
 Anchorage

Program
 Coordinator 1
 06-4625
 R18 CL
 Juneau

Social Services
 Program
 Coordinator
 06-1794
 R20 CL
 Juneau

Social Services
 Associate
 06-3946
 R12 CL
 Juneau

Project Assistant
 06-3112
 R16 CL
 Juneau



Department of Family and Community Services
 Office of Children's Services
 Children's Services Management (2666)
 FY2023 Governor

