

**State of Alaska**  
**FY2023 Governor's Operating Budget**

**Department of Family and Community Services**  
**Front Line Social Workers**  
**Component Budget Summary**

**Component: Front Line Social Workers**

**Contribution to Department's Mission**

Provide direct services to carry out the legal mandates of the department to respond to and prevent child maltreatment.

**Core Services**

- Deliver child protective services: investigate protective services reports; crisis intervention; assess families for present and impending danger to children; assess the risk of future harm in families in the absence of intervention; and assess family strengths and needs.
- Develop case plans; assess progress toward achieving case plan goals; initiate legal action to protect children; monitor the implementation of treatment plans; coordinate services.
- Arrange out-of-home care, when appropriate and necessary, in the least restrictive setting; determine when children can be safely returned to their own homes; and arrange alternative permanent placement for children when a return home is not possible.

**Major Component Accomplishments in 2021**

- The Office of Children's Services continues to identify recruitment and retention of front-line staff as an agency priority. Strategies include the implementation of alternate work week letter of agreements to increase staffing levels in remote areas impacted by staffing challenges. The agreements provide for staff to work "one week on, one week off" with assigned duty stations in Anchorage, Wasilla, or Fairbanks where the candidate pools are higher. Staff travel to outlying offices during their "one week on" rotation. Another strategy involves multiple location recruitments that provide for a broader reach of applicants. Recruitment and retention of frontline supervisors has benefited from a more flexible duty station option affording the agency to fill leadership positions with qualified applicants. Supervisors travel to their field offices and provide distance supervision via technology when not on-site.
- The University of Alaska Anchorage and the Office of Children's Services continued their partnership on workforce initiatives. After many years of planning and development the Child Welfare Occupational Endorsement Certificate was finalized and launched Fall 2021 at University of Alaska Anchorage School of Social Work. The division was able to support seven current staff entering the three-semester certificate program.
- The Mentor Program for front line staff was fully implemented. The primary program goal is to develop competencies in new staff as they transition from the classroom into the field. Mentoring continues to be a highlight for front line staff in their first six months of employment.
- The Office of Children's Services launched a Strengthening Investigations and Assessment pilot project in Wasilla, Anchorage, and Fairbanks. The pilot provides for efficiencies including timely documentation and supervisor oversight.
- The division focused on "essential services" in all areas of front line practice where specific activities are tracked and monitored for better outcomes to children and families.
- Due to the COVID-19 pandemic the Office of Children's Services partnered with tribes to assist with assessments in remote villages. In addition, the Office of Children's Services pivoted quickly with utilization of video platforms for "visiting" for children and parents and holding virtual meetings with staff to stay connected.

**Key Component Challenges**

- Workforce recruitment and retention continues to be an ongoing challenge for the Office of Children's

Services. The agency is experiencing a turnover rate of 59.4 percent among case carrying staff and a rate of 44.0 percent among all staff. Many exiting staff indicate their top reasons for leaving are workload, lack of competitive salaries, personal safety, and the difficult and traumatic work.

- Employee safety continues to be a top concern for the Office of Children’s Services. Many of the front line staff have expressed concern with the COVID-19 pandemic and new challenges that are associated with being a first responder. The staff are threatened with bodily harm and are sometimes physically assaulted by clients. Efforts have been made to improve the physical safety of each field office. In addition, organizational procedures were developed to respond to violent threats and acts toward staff.
- The Office of Children’s Services’ workforce also continues to be challenged with the lack of appropriate technology resources to do the job effectively and efficiently. Other states’ child welfare programs are vastly more technologically advanced with the use of mobile devices for case management as well as increased connectivity for children, families, foster parents, legal parties, Tribal partners, and other stakeholders.
- The COVID-19 pandemic has led to delays in court hearings which are increasing the time children remain in foster care.
- Alaska participated in a third Child and Family Services Review in spring 2017. After over two years of negotiation, Alaska’s federally mandated Performance Improvement Plan was approved in June 2019. The Performance Improvement Plan is in place for two years and requires extensive efforts from all levels of the agency with quarterly progress updates to the federal Children’s Bureau to demonstrate practice improvement activities. Due to the challenges of COVID-19 on practice implications and implementing strategies in the program improvement plan, Office of Children’s Services negotiated a year extension of the plan that was approved in 2021. The division will need to continue active efforts in implementing strategies contained within the plan and undergo Federal case review monitoring until June 14, 2022.

### **Significant Changes in Results to be Delivered in FY2023**

The Office of Children's Services anticipates improved service delivery related to safety assessment, service planning, and permanency because of the efforts underway to comply with the Program Improvement Plan.

### **Statutory and Regulatory Authority**

AS 18.05.010-070      Administration of Public Health and Related Laws  
AS 47.05.010          Duties of Department  
AS 47.10                Children in Need of Aid  
AS 47.32                Centralized Licensing and Related Administrative Procedures Personal

Responsibility and Work Opportunity Reconciliation Act of 1996  
Titles IV-A, IV-B, IV-E and XIX of the Social Security Act

<b>Contact Information</b>
<p><b>Contact:</b> Sylvan Robb, Division Director <b>Phone:</b> (907) 465-1630 <b>E-mail:</b> sylvan.robbs@alaska.gov</p>

Front Line Social Workers Personal Services Information					
Authorized Positions			Personal Services Costs		
	FY2022 Management Plan	FY2023 Governor			
Full-time	0	528	Annual Salaries		34,442,758
Part-time	0	0	COLA		123,890
Nonpermanent	0	2	Premium Pay		916,252
			Annual Benefits		24,242,944
			<i>Less 7.83% Vacancy Factor</i>		(4,676,944)
			Lump Sum Premium Pay		0
<b>Totals</b>	<b>0</b>	<b>530</b>	<b>Total Personal Services</b>		<b>55,048,900</b>

Position Classification Summary					
Job Class Title	Anchorage	Fairbanks	Juneau	Others	Total
Accounting Clerk	0	3	0	0	3
Accounting Technician 1	1	0	0	3	4
Administrative Assistant 2	3	1	1	5	10
Administrative Officer 1	0	0	1	1	2
Administrative Officer 2	1	1	0	1	3
C/C Lic Spec 1	10	4	1	12	27
C/C Lic Spec 2	2	2	1	2	7
C/C Lic Spec 3	1	1	0	0	2
Eligibility Technician 2	5	0	2	5	12
Eligibility Technician 4	1	0	0	1	2
Mental Health Clinician 3	1	0	0	0	1
Nurse Consultant 1	1	1	0	1	3
Nurse Consultant 2	1	0	0	0	1
Office Assistant 1	8	4	1	3	16
Office Assistant 2	10	2	1	8	21
Office Assistant 3	1	0	0	0	1
Office Assistant 4	0	1	0	0	1
Pro Svcs Sp 1	25	0	0	0	25
Pro Svcs Sp 2	89	35	13	96	233
Pro Svcs Sp 3	8	2	1	8	19
Pro Svcs Sp 4	21	8	3	19	51
Program Coordinator 2	1	0	0	0	1
Project Assistant	1	0	0	0	1
Protective Services Manager 1	4	2	1	3	10
Protective Services Manager 2	3	0	1	1	5
Research Analyst 3	1	0	0	0	1
Social Services Associate	20	6	3	30	59
Ss Prog Coord	8	0	0	0	8
Ss Prog Ofc	1	0	0	0	1
<b>Totals</b>	<b>228</b>	<b>73</b>	<b>30</b>	<b>199</b>	<b>530</b>

**Component Detail All Funds**  
**Department of Family and Community Services**

**Component:** Front Line Social Workers (3318)  
**RDU:** Children's Services (486)

Non-Formula Component

	FY2021 Actuals	FY2022 Conference Committee	FY2022 Authorized	FY2022 Management Plan	FY2023 Governor	FY2022 Management Plan vs FY2023 Governor	
71000 Personal Services	0.0	0.0	0.0	0.0	55,048.9	55,048.9	100.0%
72000 Travel	0.0	0.0	0.0	0.0	2,071.3	2,071.3	100.0%
73000 Services	0.0	0.0	0.0	0.0	15,747.2	15,747.2	100.0%
74000 Commodities	0.0	0.0	0.0	0.0	454.1	454.1	100.0%
75000 Capital Outlay	0.0	0.0	0.0	0.0	0.0	0.0	0.0%
77000 Grants, Benefits	0.0	0.0	0.0	0.0	0.0	0.0	0.0%
78000 Miscellaneous	0.0	0.0	0.0	0.0	0.0	0.0	0.0%
<b>Totals</b>	<b>0.0</b>	<b>0.0</b>	<b>0.0</b>	<b>0.0</b>	<b>73,321.5</b>	<b>73,321.5</b>	<b>100.0%</b>
<b>Fund Sources:</b>							
1002 Fed Rcpts (Fed)	0.0	0.0	0.0	0.0	28,677.5	28,677.5	100.0%
1003 G/F Match (UGF)	0.0	0.0	0.0	0.0	4,845.9	4,845.9	100.0%
1004 Gen Fund (UGF)	0.0	0.0	0.0	0.0	39,549.3	39,549.3	100.0%
1007 I/A Rcpts (Other)	0.0	0.0	0.0	0.0	30.2	30.2	100.0%
1037 GF/MH (UGF)	0.0	0.0	0.0	0.0	148.5	148.5	100.0%
1108 Stat Desig (Other)	0.0	0.0	0.0	0.0	70.1	70.1	100.0%
<b>Unrestricted General (UGF)</b>	<b>0.0</b>	<b>0.0</b>	<b>0.0</b>	<b>0.0</b>	<b>44,543.7</b>	<b>44,543.7</b>	<b>100.0%</b>
<b>Designated General (DGF)</b>	<b>0.0</b>	<b>0.0</b>	<b>0.0</b>	<b>0.0</b>	<b>0.0</b>	<b>0.0</b>	<b>0.0%</b>
<b>Other Funds</b>	<b>0.0</b>	<b>0.0</b>	<b>0.0</b>	<b>0.0</b>	<b>100.3</b>	<b>100.3</b>	<b>100.0%</b>
<b>Federal Funds</b>	<b>0.0</b>	<b>0.0</b>	<b>0.0</b>	<b>0.0</b>	<b>28,677.5</b>	<b>28,677.5</b>	<b>100.0%</b>
<b>Positions:</b>							
Permanent Full Time	0	0	0	0	528	528	100.0%
Permanent Part Time	0	0	0	0	0	0	0.0%
Non Permanent	0	0	0	0	2	2	100.0%

**Change Record Detail - Multiple Scenarios with Descriptions**  
**Department of Family and Community Services**

**Component:** Front Line Social Workers (3318)  
**RDU:** Children's Services (486)

Scenario/Change Record Title	Trans Type	Totals	Personal Services	Travel	Services	Commodities	Capital Outlay	Grants, Benefits	Miscellaneous	Positions		NP
										PFT	PPT	
<b>Subtotal</b>		<b>0.0</b>	<b>0.0</b>	<b>0.0</b>	<b>0.0</b>	<b>0.0</b>	<b>0.0</b>	<b>0.0</b>	<b>0.0</b>	<b>0</b>	<b>0</b>	<b>0</b>
***** Changes From FY2022 Management Plan To FY2023 Governor *****												
<b>Executive Order Transfer from the Department of Health and Social Services</b>	Atrin	73,321.5	55,048.9	2,071.3	15,747.2	454.1	0.0	0.0	0.0	528	0	2
1002 Fed Rcpts		28,677.5										
1003 G/F Match		4,845.9										
1004 Gen Fund		39,549.3										
1007 I/A Rcpts		30.2										
1037 GF/MH		148.5										
1108 Stat Desig		70.1										
<b>Totals</b>		<b>73,321.5</b>	<b>55,048.9</b>	<b>2,071.3</b>	<b>15,747.2</b>	<b>454.1</b>	<b>0.0</b>	<b>0.0</b>	<b>0.0</b>	<b>528</b>	<b>0</b>	<b>2</b>

By Executive Order, the Department of Health and Social Services will be reorganized into two distinct departments: the Alaska Department of Health and the Alaska Department of Family and Community Services. This reorganization streamlines and improves the delivery of critical programs and services while creating more flexibility and responsiveness in both departments resulting in improved outcomes.

**Line Item Detail (1676)**  
**Department of Family and Community Services**  
**Travel**

**Component:** Front Line Social Workers (3318)

Line Number	Line Name		FY2021 Actuals	FY2022 Management Plan	FY2023 Governor
2000	Travel		0.0	0.0	2,071.3
Object Class	Servicing Agency	Explanation	FY2021 Actuals	FY2022 Management Plan	FY2023 Governor
<b>2000 Travel Detail Totals</b>			<b>0.0</b>	<b>0.0</b>	<b>2,071.3</b>
2000	In-State Employee Travel	Travel costs for administrative purposes, departmental meetings, site visits, quality assurance, training, privately owned vehicles, per diem, supervisory visits to offices within the regions, development of child protection resources and case related employee travel.	0.0	0.0	1,875.3
2001	In-State Non-Employee Travel	Nonemployee portion of instate travels costs including airfare, lodging, car rental and meals	0.0	0.0	10.0
2002	Out of State Employee Travel	Out of state travel costs to support the statewide implementation of the Family-to-Family services and case related employee travel.	0.0	0.0	85.0
2005	Moving Costs	Moving and re-location costs. Includes the costs associated with moving household goods, travel, temporary lodging, meals and incidentals.	0.0	0.0	100.0
2006	Other Travel Costs	Cash advance fee	0.0	0.0	1.0

**Line Item Detail (1676)**  
**Department of Family and Community Services**  
**Services**

**Component:** Front Line Social Workers (3318)

Line Number	Line Name		FY2021 Actuals	FY2022 Management Plan	FY2023 Governor
3000	Services		0.0	0.0	15,747.2
Object Class	Servicing Agency	Explanation	FY2021 Actuals	FY2022 Management Plan	FY2023 Governor
<b>3000 Services Detail Totals</b>			<b>0.0</b>	<b>0.0</b>	<b>15,747.2</b>
3000	Education Services	Conference registration fees, membership dues, employee tuition and other employee training costs.	0.0	0.0	3.0
3002	Legal and Judicial Services	Fees paid for testimony in child protective cases from witnesses such as medical personnel, psychiatrists, and other outside parties.	0.0	0.0	6.0
3003	Information Technology	Software licensing fees and software maintenance costs.	0.0	0.0	60.0
3003	Information Technology	Admin - Department-wide Reimbursable Services Agreement: Department of Administration, Office of Information Technology	0.0	0.0	1,300.0
3004	Telecommunications	Communication costs to outside vendors for long distance charges, teleconference fees, data circuits, television, cellular and other wireless phone costs.	0.0	0.0	600.0
3005	Health Services	Services related to Americans with Disabilities Act compliance for workers and family contact spaces within field offices.	0.0	0.0	8.0
3006	Delivery Services	Delivery, freight, postage and courier costs.	0.0	0.0	75.0
3007	Advertising and Promotions	Cost of advertising for recruitment purposes and to meet legal requirements.	0.0	0.0	5.0



**Line Item Detail (1676)**  
**Department of Family and Community Services**  
**Services**

**Component:** Front Line Social Workers (3318)

Object Class	Servicing Agency	Explanation	FY2021 Actuals	FY2022 Management Plan	FY2023 Governor
<b>3000 Services Detail Totals</b>			<b>0.0</b>	<b>0.0</b>	<b>15,747.2</b>
3008	Utilities	Waste disposal costs, recycling and other utility costs.	0.0	0.0	250.0
3009	Structure/Infrastructure/Land	Miscellaneous services: Janitorial and caretaker services; miscellaneous repairs and maintenance; room, space and structure rentals for meetings and document storage.	0.0	0.0	336.1
3010	Equipment/Machinery	Service contracts for copiers, postage machines.	0.0	0.0	50.0
3011	Other Services	Cost to maintain the Citizens Review Panel and enable the effective evaluation of Office of Children's Services' discharge of Child Protection Services and responsibilities in accordance with child protection standards.	0.0	0.0	2,122.7
		Contracts for armed security guards for the regional offices that include Juneau, Anchorage, Wasilla, Fairbanks and Kenai.			
		Transportation services to maintain school consistency in Fairbanks, Mat-Su, Anchorage and Kenai as required by the Every Student Succeeds Act.			
		Printing and mailing services for placement of notices.			
		Maintenance and operations for ORCA.			
3011	Other Services	Services to be provided by certain Alaska Native Tribes and Tribal	0.0	0.0	3,743.9

**Line Item Detail (1676)**  
**Department of Family and Community Services**  
**Services**

**Component:** Front Line Social Workers (3318)

Object Class	Servicing Agency	Explanation	FY2021 Actuals	FY2022 Management Plan	FY2023 Governor	
<b>3000 Services Detail Totals</b>			<b>0.0</b>	<b>0.0</b>	<b>15,747.2</b>	
		Organizations through the Alaska Tribal Child Welfare Compact and Support, Services and Funding Agreements.				
3017	Inter-Agency Information Technology Non-Telecommunications	Admin - Department-wide	Reimbursable Services Agreement: Department of Administration, Computer Services, Telecom, and Network Services	0.0	0.0	500.0
3017	Inter-Agency Information Technology Non-Telecommunications	FCS - Commissioner's Office (3304)	Reimbursable Services Agreement: Department of Health and Social Services, Commissioner's Office	0.0	0.0	42.0
3017	Inter-Agency Information Technology Non-Telecommunications	FCS - Front Line Social Workers (3318)	Reimbursable Services Agreement: OMB Admin Order 302 and OMB Budget Analyst Support	0.0	0.0	37.0
3017	Inter-Agency Information Technology Non-Telecommunications	FCS - Information Technology Services (3328)	Reimbursable Services Agreement: Department of Health and Social Services for Business Applications	0.0	0.0	700.0
3017	Inter-Agency Information Technology Non-Telecommunications	FCS - Public Affairs (3329)	Reimbursable Services Agreement: Department of Health and Social Services for Public Affairs	0.0	0.0	60.0
3017	Inter-Agency Information Technology Non-Telecommunications	FCS - Commissioner's Office (3304)	Alaska eHealth Network information exchange	0.0	0.0	25.0
3017	Inter-Agency Information Technology Non-Telecommunications	FCS - Information Technology Services (3328)	Reimbursable Services Agreement: Department of Health and Social Services for Online Resource for the Children of Alaska Maintenance and Operations.	0.0	0.0	440.6
3021	Inter-Agency Mail	Admin - Department-wide	Reimbursable Services Agreement: Department of Administration. Central mail and postage services.	0.0	0.0	38.0
3022	Inter-Agency Human Resources	Admin - Department-wide	Reimbursable Services Agreement: Department of Administration, Centralized Admin Services Human	0.0	0.0	290.0

**Line Item Detail (1676)**  
**Department of Family and Community Services**  
**Services**

**Component:** Front Line Social Workers (3318)

Object Class	Servicing Agency	Explanation	FY2021 Actuals	FY2022 Management Plan	FY2023 Governor	
<b>3000 Services Detail Totals</b>			<b>0.0</b>	<b>0.0</b>	<b>15,747.2</b>	
		Resources charges				
3023	Inter-Agency Building Leases	Admin - Department-wide	Reimbursable Services Agreement: Building lease Costs: Petersburg Lease 1673, Dillingham Lease 2209 Bethel Lease 2688, Aniak Lease 2287, Delta Junction Lease 2350, Kotzebue Lease 2649, Homer Lease 2465, Utqiagvik Lease 2476, St. Mary's Lease 2484, Sitka Lease 2495, Wasilla Lease 2524, Fairbanks Lease 2531, Craig Lease 2557, Anchorage Lease 2587, Gakona Lease 2640 Juneau Southeast Office, Lease 2647 Lease 8003-2, Griffin Building, Kodiak, Lease 8010, Kenai Combined Facility, Kenai, Lease 8057 Nome State Office Building, Wasilla, A Children's Place	0.0	0.0	2,800.0
3023	Inter-Agency Building Leases	Trans - Department-wide	Reimbursable Services Agreement: Lease 8003	0.0	0.0	142.0
3024	Inter-Agency Legal	Law - Department-wide	Reimbursable Services Agreement: Regulations Review and Direct Charge	0.0	0.0	400.0
3025	Inter-Agency Auditing	FCS - Administrative Services (3305)	Reimbursable Services Agreement: Audit Support Services	0.0	0.0	9.0
3026	Inter-Agency Insurance	Admin - Department-wide	Reimbursable Services Agreement:	0.0	0.0	75.0

**Line Item Detail (1676)**  
**Department of Family and Community Services**  
**Services**

**Component:** Front Line Social Workers (3318)

Object Class	Servicing Agency	Explanation	FY2021 Actuals	FY2022 Management Plan	FY2023 Governor
<b>3000 Services Detail Totals</b>			<b>0.0</b>	<b>0.0</b>	<b>15,747.2</b>
		Department of Administration, Division of Risk Management, Insurance.			
3027	Inter-Agency Financial	Admin - Department-wide			
		Reimbursable Services Agreement: Department of Administration, Division of Finance for Integrated Resource Information System and Alaska Data Enterprise Reporting	0.0	0.0	150.0
3028	Inter-Agency Americans with Disabilities Act Compliance	Admin - Department-wide			
		Reimbursable Services Agreement: Department of Administration Centralized Admin Services Americans with Disabilities Act charges to Department of Health and Social Services	0.0	0.0	4.5
3032	Inter-Agency Health	FCS - Administrative Services (3305)			
		Reimbursable Services Agreement: Department of Health and Social Services, Finance and Management Services department-wide services	0.0	0.0	200.0
3032	Inter-Agency Health	Health - Department-wide			
		Reimbursable Services Agreement: Department of Health and Social Services, Health Care Services, Medical Authority services.	0.0	0.0	145.0
		Reimbursable Services Agreement: Department of Health and Social Services, Division of Health Care Services for fingerprinting and background check services for resource families.			
3036	Inter-Agency Safety	PubSaf - Department-wide			
		Reimbursable Services Agreement: Department of Public Safety, Background Check and Criminal History record checks for newly hired Office of Children's Services Protective Services Specialists	0.0	0.0	7.0

**Line Item Detail (1676)**  
**Department of Family and Community Services**  
**Services**

**Component:** Front Line Social Workers (3318)

Object Class		Servicing Agency	Explanation	FY2021 Actuals	FY2022 Management Plan	FY2023 Governor
<b>3000 Services Detail Totals</b>				<b>0.0</b>	<b>0.0</b>	<b>15,747.2</b>
3037	State Equipment Fleet	Trans - Department-wide	State Equipment Fleet Service and Fuel Charges	0.0	0.0	413.0
3038	Inter-Agency Management/Consulting	Admin - Department-wide	Reimbursable Services Agreement: Department of Administration, Shared Services, Computer Refresh	0.0	0.0	160.0
3038	Inter-Agency Management/Consulting	FCS - Information Technology Services (3328)	Reimbursable Services Agreement: Finance and Management Services for Microsoft and Adobe	0.0	0.0	42.0
3038	Inter-Agency Management/Consulting	Labor - Department-wide	Reimbursable Services Agreement: Department of Labor. Population estimates demographic support.	0.0	0.0	7.4
3038	Inter-Agency Management/Consulting	Admin - Department-wide	Reimbursable Services Agreement: Department of Administration for Information Technology customer services	0.0	0.0	500.0

**Line Item Detail (1676)**  
**Department of Family and Community Services**  
**Commodities**

**Component:** Front Line Social Workers (3318)

Line Number	Line Name		FY2021 Actuals	FY2022 Management Plan	FY2023 Governor
4000	Commodities		0.0	0.0	454.1
Object Class	Servicing Agency	Explanation	FY2021 Actuals	FY2022 Management Plan	FY2023 Governor
		<b>4000 Commodities Detail Totals</b>	<b>0.0</b>	<b>0.0</b>	<b>454.1</b>
4000	Business	General office supplies necessary to support programs and activities. Includes educational materials, duplicating, copying, and information technology supplies. Also includes office and computer equipment, furniture and tools with a cost or value of less than \$5000	0.0	0.0	454.1

**Revenue Detail (1681)**  
**Department of Family and Community Services**

**Component:** Front Line Social Workers (3318)

<b>Revenue Type (OMB Fund Code)</b> <b>Revenue Source</b>	<b>Component</b>	<b>Comment</b>	<b>FY2021 Actuals</b>	<b>FY2022 Management Plan</b>	<b>FY2023 Governor</b>
<b>5002 Fed Rcpts (1002 Fed Rcpts)</b>			<b>0.0</b>	<b>0.0</b>	<b>28,677.5</b>
5019 Federal - Miscellaneous Grants		Title IV-E, Social Services Block Grant, and other federal funding sources determined by the Public Assistance Cost Allocation Plan	0.0	0.0	28,677.5
<b>5007 I/A Rcpts (1007 I/A Rcpts)</b>			<b>0.0</b>	<b>0.0</b>	<b>30.2</b>
5301 Inter-Agency Receipts	Courts - Department-wide	Interagency receipt authority for services provided on behalf of other state agencies.	0.0	0.0	30.2
<b>5108 Stat Desig (1108 Stat Desig)</b>			<b>0.0</b>	<b>0.0</b>	<b>70.1</b>
5206 Statutory Designated Program Receipts - Contracts		The City and Borough of Wrangell requested an Office of Children's Services position to help carry the case work.	0.0	0.0	70.1

**Inter-Agency Services (1682)**  
**Department of Family and Community Services**

**Component:** Front Line Social Workers (3318)

	FY2021 Actuals	FY2022 Management Plan	FY2023 Governor
<b>Component Totals</b>	<b>0.0</b>	<b>0.0</b>	<b>8,487.5</b>
With Department of Administration	0.0	0.0	5,817.5
With Department of Family and Community Services	0.0	0.0	1,555.6
With Department of Transportation/Public Facilities	0.0	0.0	555.0
With Department of Law	0.0	0.0	400.0
With Department of Health	0.0	0.0	145.0
With Department of Public Safety	0.0	0.0	7.0
With Department of Labor and Workforce Development	0.0	0.0	7.4

Object Class	Servicing Agency	Explanation	FY2021 Actuals	FY2022 Management Plan	FY2023 Governor
3003 Information Technology	Admin - Department-wide	Reimbursable Services Agreement: Department of Administration, Office of Information Technology	0.0	0.0	1,300.0
3017 Inter-Agency Information Technology Non-Telecommunications	Admin - Department-wide	Reimbursable Services Agreement: Department of Administration, Computer Services, Telecom, and Network Services	0.0	0.0	500.0
3017 Inter-Agency Information Technology Non-Telecommunications	FCS - Commissioner's Office (3304)	Reimbursable Services Agreement: Department of Health and Social Services, Commissioner's Office	0.0	0.0	42.0
3017 Inter-Agency Information Technology Non-Telecommunications	FCS - Front Line Social Workers (3318)	Reimbursable Services Agreement: OMB Admin Order 302 and OMB Budget Analyst Support	0.0	0.0	37.0
3017 Inter-Agency Information Technology Non-Telecommunications	FCS - Information Technology Services (3328)	Reimbursable Services Agreement: Department of Health and Social Services for Business Applications	0.0	0.0	700.0
3017 Inter-Agency Information Technology Non-Telecommunications	FCS - Public Affairs (3329)	Reimbursable Services Agreement: Department of Health and Social Services for Public Affairs	0.0	0.0	60.0
3017 Inter-Agency Information Technology Non-Telecommunications	FCS - Commissioner's Office (3304)	Alaska eHealth Network information exchange	0.0	0.0	25.0



**Inter-Agency Services (1682)**  
**Department of Family and Community Services**

**Component:** Front Line Social Workers (3318)

<b>Object Class</b>	<b>Servicing Agency</b>	<b>Explanation</b>	<b>FY2021 Actuals</b>	<b>FY2022 Management Plan</b>	<b>FY2023 Governor</b>
3017	Inter-Agency Information Technology Non-Telecommunications	FCS - Information Technology Services (3328)			
		Reimbursable Services Agreement: Department of Health and Social Services for Online Resource for the Children of Alaska Maintenance and Operations.	0.0	0.0	440.6
3021	Inter-Agency Mail	Admin - Department-wide			
		Reimbursable Services Agreement: Department of Administration. Central mail and postage services.	0.0	0.0	38.0
3022	Inter-Agency Human Resources	Admin - Department-wide			
		Reimbursable Services Agreement: Department of Administration, Centralized Admin Services Human Resources charges	0.0	0.0	290.0
3023	Inter-Agency Building Leases	Admin - Department-wide			
		Reimbursable Services Agreement: Building lease Costs: Petersburg Lease 1673, Dillingham Lease 2209, Bethel Lease 2688, Aniak Lease 2287, Delta Junction Lease 2350, Kotzebue Lease 2649, Homer Lease 2465, Utqiagvik Lease 2476, St. Mary's Lease 2484, Sitka Lease 2495, Wasilla Lease 2524, Fairbanks Lease 2531, Craig Lease 2557, Anchorage Lease 2587, Gakona Lease 2640 Juneau Southeast Office, Lease 2647 Lease 8003-2, Griffin Building, Kodiak, Lease 8010, Kenai Combined Facility, Kenai, Lease 8057 Nome State Office Building, Wasilla, A Children's Place	0.0	0.0	2,800.0

**Inter-Agency Services (1682)**  
**Department of Family and Community Services**

**Component:** Front Line Social Workers (3318)

<b>Object Class</b>	<b>Servicing Agency</b>	<b>Explanation</b>	<b>FY2021 Actuals</b>	<b>FY2022 Management Plan</b>	<b>FY2023 Governor</b>	
3023	Inter-Agency Building Leases	Trans - Department-wide	Reimbursable Services Agreement: Lease 8003	0.0	0.0	142.0
3024	Inter-Agency Legal	Law - Department-wide	Reimbursable Services Agreement: Regulations Review and Direct Charge	0.0	0.0	400.0
3025	Inter-Agency Auditing	FCS - Administrative Services (3305)	Reimbursable Services Agreement: Audit Support Services	0.0	0.0	9.0
3026	Inter-Agency Insurance	Admin - Department-wide	Reimbursable Services Agreement: Department of Administration, Division of Risk Management, Insurance.	0.0	0.0	75.0
3027	Inter-Agency Financial	Admin - Department-wide	Reimbursable Services Agreement: Department of Administration, Division of Finance for Integrated Resource Information System and Alaska Data Enterprise Reporting	0.0	0.0	150.0
3028	Inter-Agency Americans with Disabilities Act Compliance	Admin - Department-wide	Reimbursable Services Agreement: Department of Administration Centralized Admin Services Americans with Disabilities Act charges to Department of Health and Social Services	0.0	0.0	4.5
3032	Inter-Agency Health	FCS - Administrative Services (3305)	Reimbursable Services Agreement: Department of Health and Social Services, Finance and Management Services department-wide services	0.0	0.0	200.0
3032	Inter-Agency Health	Health - Department-wide	Reimbursable Services Agreement: Department of Health and Social Services, Health Care Services, Medical Authority services.	0.0	0.0	145.0
			Reimbursable Services Agreement: Department of Health and Social Services, Division of Health Care Services for fingerprinting and background check services for			

**Inter-Agency Services (1682)**  
**Department of Family and Community Services**

**Component:** Front Line Social Workers (3318)

Object Class		Servicing Agency	Explanation	FY2021 Actuals	FY2022 Management Plan	FY2023 Governor
			resource families.			
3036	Inter-Agency Safety	PubSaf - Department-wide	Reimbursable Services Agreement: Department of Public Safety, Background Check and Criminal History record checks for newly hired Office of Children's Services Protective Services Specialists	0.0	0.0	7.0
3037	State Equipment Fleet	Trans - Department-wide	State Equipment Fleet Service and Fuel Charges	0.0	0.0	413.0
3038	Inter-Agency Management/Consulting	Admin - Department-wide	Reimbursable Services Agreement: Department of Administration, Shared Services, Computer Refresh	0.0	0.0	160.0
3038	Inter-Agency Management/Consulting	FCS - Information Technology Services (3328)	Reimbursable Services Agreement: Finance and Management Services for Microsoft and Adobe	0.0	0.0	42.0
3038	Inter-Agency Management/Consulting	Labor - Department-wide	Reimbursable Services Agreement: Department of Labor. Population estimates demographic support.	0.0	0.0	7.4
3038	Inter-Agency Management/Consulting	Admin - Department-wide	Reimbursable Services Agreement: Department of Administration for Information Technology customer services	0.0	0.0	500.0

**Personal Services Expenditure Detail**  
**Department of Family and Community Services**

**Scenario:** FY2023 Governor (18673)  
**Component:** Front Line Social Workers (3318)  
**RDU:** Children's Services (486)

PCN	Job Class Title	Time Status	Retire Code	Barg Unit	Location	Salary Sched	Range / Step	Comp Months	Split / Count	Annual Salaries	COLA	Premium Pay	Annual Benefits	Total Costs	UGF Amount
06-1351	Research Analyst 3	FT	A	GP	Anchorage	200	18J	12.0		76,811	0	0	50,120	126,931	81,236
06-1805	Pro Svcs Sp 2	FT	A	GP	Wasilla	200	17G / J	12.0		69,189	0	0	47,010	116,199	73,205
06-3012	C/C Lic Spec 1	FT	A	GP	Bethel	250	16F / G	12.0		93,715	0	0	57,017	150,732	75,366
06-3014	Protective Services Manager 1	FT	A	SS	Fairbanks	203	21K	12.0		104,333	1,469	0	62,949	168,751	108,001
06-3015	Protective Services Manager 1	FT	A	SS	Wasilla	200	21F / J	12.0		97,344	1,371	0	60,098	158,813	101,640
06-3016	Protective Services Manager 1	FT	A	SS	Fairbanks	203	21K	12.0		104,333	1,469	0	62,949	168,751	108,001
06-3018	Pro Svcs Sp 4	FT	A	SS	Anchorage	200	20F / J	12.0		90,208	1,292	1,547	57,817	150,864	92,027
06-3019	Pro Svcs Sp 2	FT	A	GP	Anchorage	200	17D / E	12.0		62,827	0	1,547	45,046	109,420	66,746
06-3020	Pro Svcs Sp 2	FT	A	GP	Wasilla	200	17B / C	12.0		58,695	0	1,697	43,421	103,813	63,326
06-3021	Pro Svcs Sp 2	FT	A	GP	Anchorage	200	17C / D	12.0		61,576	0	695	44,188	106,459	64,940
06-3022	Pro Svcs Sp 1	FT	A	GP	Anchorage	200	15C	12.0		52,299	0	0	40,119	92,418	56,375
06-3023	Pro Svcs Sp 2	FT	A	GP	Anchorage	200	17B / C	12.0		58,535	0	463	42,853	101,851	62,129
06-3025	Pro Svcs Sp 2	FT	A	GP	Juneau	205	17A / B	12.0		60,812	0	2,920	44,784	108,516	66,195
06-3026	Eligibility Technician 2	FT	A	GP	Anchorage	200	14C / D	12.0		49,805	0	0	39,102	88,907	44,454
06-3027	Pro Svcs Sp 2	FT	A	GP	Anchorage	200	17D / E	12.0		63,721	0	2,192	45,674	111,587	68,068
06-3029	Pro Svcs Sp 2	FT	A	GP	Ketchikan	200	17A / B	12.0		57,384	0	956	42,584	100,924	61,564
06-3030	Social Services Associate	FT	A	GP	Ketchikan	200	12B / C	12.0		41,685	0	0	35,789	77,474	47,259
06-3031	Office Assistant 1	FT	A	GP	Juneau	99	8N / O	12.0		48,848	0	758	39,021	88,627	54,063
06-3033	Office Assistant 2	FT	A	GP	Anchorage	99	10N	12.0		51,480	0	0	39,785	91,265	45,633
06-3034	Pro Svcs Sp 2	FT	A	GP	Dillingham	237	17B / C	12.0		80,296	0	0	51,542	131,838	80,421
06-3035	Office Assistant 1	FT	A	GP	Anchorage	200	8D / E	12.0		34,746	0	0	32,958	67,704	33,852
06-3036	Office Assistant 2	FT	A	GP	Fairbanks	203	10M	12.0		50,369	0	0	39,332	89,701	44,851
06-3037	Office Assistant 4	FT	A	SS	Fairbanks	603	12C / D	12.0		48,324	680	0	40,097	89,101	44,551
06-3039	Office Assistant 1	FT	A	GP	Nome	237	8A	9.0		32,424	0	0	27,315	59,739	29,870
06-3042	Pro Svcs Sp 1	FT	A	GP	Anchorage	200	15A	9.0		36,504	0	0	28,980	65,484	39,290
06-3043	Pro Svcs Sp 2	FT	A	GP	Anchorage	200	17A	12.0		55,985	0	0	41,623	97,608	58,565
06-3044	Pro Svcs Sp 2	FT	A	GP	Anchorage	200	17B / C	12.0		58,358	0	238	42,688	101,284	60,770
06-3045	Pro Svcs Sp 2	FT	A	GP	Anchorage	200	17K	12.0		74,139	0	714	49,321	124,174	74,504
06-3046	Pro Svcs Sp 2	FT	A	GP	Wasilla	200	17A	9.0		41,988	0	256	31,322	73,566	44,140
06-3047	Pro Svcs Sp 4	FT	A	SS	Fairbanks	203	20B / C	12.0		81,536	1,148	0	53,648	136,332	81,799
06-3048	Pro Svcs Sp 2	FT	A	GP	Juneau	205	17A / B	12.0		60,645	0	0	43,524	104,169	62,501
06-3057	Pro Svcs Sp 2	FT	A	GP	Anchorage	200	17E / F	12.0		64,896	0	1,000	45,667	111,563	66,938
06-3058	Social Services Associate	FT	A	GP	Kenai	200	12C	12.0		42,666	0	0	36,189	78,855	47,313
06-3060	Pro Svcs Sp 4	FT	A	SS	Anchorage	200	20B / C	12.0		78,983	1,112	0	52,606	132,701	79,621
06-3061	Pro Svcs Sp 2	FT	A	GP	Anchorage	200	17E / F	12.0		65,544	0	7,655	48,647	121,846	73,108
06-3062	Office Assistant 2	FT	A	GP	Juneau	205	10C / D	12.0		39,846	0	408	35,205	75,459	37,730

Note: If a position is split, an asterisk (\*) will appear in the Split/Count column. If the split position is also counted in the component, two asterisks (\*\*) will appear in this column. [No valid job title] appearing in the Job Class Title indicates that the PCN has an invalid class code or invalid range for the class code effective date of this scenario.

**Personal Services Expenditure Detail**  
**Department of Family and Community Services**

**Scenario:** FY2023 Governor (18673)  
**Component:** Front Line Social Workers (3318)  
**RDU:** Children's Services (486)

PCN	Job Class Title	Time Status	Retire Code	Barg Unit	Location	Salary Sched	Range / Step	Comp Months	Split / Count	Annual Salaries	COLA	Premium Pay	Annual Benefits	Total Costs	UGF Amount
06-3063	Accounting Technician 1	FT	A	GP	Anchorage	200	12E / F	12.0		45,728	0	0	37,438	83,166	41,583
06-3064	Social Services Associate	FT	A	GP	Bethel	250	12D / E	12.0		67,139	0	0	46,174	113,313	67,988
06-3065	Pro Svcs Sp 2	FT	A	GP	Juneau	205	17G	12.0		72,404	0	1,925	49,108	123,437	74,062
06-3066	Pro Svcs Sp 2	FT	A	GP	Fairbanks	203	17A	12.0		57,662	0	2,302	43,247	103,211	61,927
06-3067	Pro Svcs Sp 2	FT	A	GP	Anchorage	200	17D / E	12.0		64,436	0	1,000	45,479	110,915	66,549
06-3069	Pro Svcs Sp 3	FT	A	GP	Juneau	205	19A	9.0		50,807	0	0	34,815	85,622	51,373
06-3070	Pro Svcs Sp 2	FT	A	GP	Kodiak	211	17A	9.0		46,610	0	0	33,103	79,713	47,828
06-3072	Pro Svcs Sp 4	FT	A	SS	Bethel	250	20C / D	12.0		121,092	1,799	6,642	72,497	202,030	121,218
06-3073	Pro Svcs Sp 2	FT	A	GP	Fairbanks	203	17A / B	12.0		59,536	0	7,018	45,935	112,489	68,618
06-3074	Protective Services Manager 2	FT	A	SS	Wasilla	200	22L / M	12.0		115,220	1,622	0	67,391	184,233	110,540
06-3076	Pro Svcs Sp 2	FT	A	GP	Anchorage	200	17C	12.0		60,236	0	1,370	43,917	105,523	63,314
06-3077	C/C Lic Spec 2	FT	A	SS	Wasilla	99	18M	12.0		86,407	1,217	0	55,635	143,259	71,630
06-3080	Administrative Assistant 2	FT	A	SS	Kenai	600	14E / F	12.0		58,677	829	224	44,413	104,143	52,072
06-3082	Office Assistant 2	FT	A	GP	Anchorage	200	10C	12.0		37,830	0	0	34,216	72,046	36,023
06-3085	Protective Services Manager 1	FT	A	SS	Anchorage	200	21D	12.0		89,003	1,262	633	56,953	147,851	88,711
06-3096	Pro Svcs Sp 4	FT	A	SS	Juneau	205	20D / E	12.0		88,243	1,361	8,428	59,823	157,855	94,713
06-3098	Pro Svcs Sp 1	FT	A	GP	Anchorage	200	15A	9.0		36,504	0	1,000	29,388	66,892	40,135
06-3100	Pro Svcs Sp 1	FT	A	GP	Anchorage	200	15A	9.0		36,504	0	0	28,980	65,484	39,290
06-3102	Pro Svcs Sp 4	FT	A	SS	Fairbanks	203	20Q	12.0		118,394	1,667	0	68,686	188,747	113,248
06-3108	Social Services Associate	FT	A	GP	Juneau	205	12C	12.0		44,792	0	312	37,184	82,288	49,373
06-3109	Social Services Associate	FT	A	GP	Kodiak	211	12E / F	12.0		50,689	0	348	39,604	90,641	54,385
06-3114	Administrative Officer 2	FT	A	SS	Wasilla	200	19L / M	12.0		93,566	1,317	0	58,556	153,439	76,720
06-3115	Administrative Officer 2	FT	A	SS	Fairbanks	203	19J	12.0		88,608	1,248	0	56,533	146,389	73,195
06-3117	Pro Svcs Sp 2	FT	A	GP	Ketchikan	200	17B / C	12.0		59,509	0	2,167	43,945	105,621	63,373
06-3119	C/C Lic Spec 1	FT	A	GP	Anchorage	200	16B / C	12.0		54,683	0	0	41,092	95,775	47,888
06-3122	Pro Svcs Sp 1	FT	A	GP	Anchorage	200	15A	9.0		36,504	0	218	29,069	65,791	39,475
06-3125	Pro Svcs Sp 4	FT	A	SS	Anchorage	200	20D / E	12.0		85,491	1,220	1,154	55,732	143,597	86,158
06-3126	Pro Svcs Sp 4	FT	A	SS	Wasilla	99	20Q	12.0		118,080	1,684	1,503	69,171	190,438	114,263
06-3139	Pro Svcs Sp 4	FT	A	SS	Kenai	200	20C / D	12.0		82,457	1,209	3,379	55,402	142,447	85,468
06-3140	Pro Svcs Sp 2	FT	A	GP	Fairbanks	203	17C / D	12.0		62,692	0	4,260	46,098	113,050	67,830
06-3141	Pro Svcs Sp 2	FT	A	GP	Homer	200	17A	12.0		55,985	0	0	41,623	97,608	58,565
06-3143	Social Services Associate	FT	A	GP	Kenai	200	12G	12.0		48,672	0	102	38,681	87,455	52,473
06-3154	Social Services Associate	FT	A	GP	Juneau	205	12C	12.0		44,792	0	1,020	37,473	83,285	49,971
06-3156	Office Assistant 2	FT	A	GP	Anchorage	200	10C / D	12.0		38,385	0	0	34,442	72,827	36,414
06-3159	Pro Svcs Sp 2	FT	A	GP	Fairbanks	203	17A	12.0		57,662	0	1,820	43,050	102,532	61,519
06-3161	Administrative Assistant 2	FT	A	SS	Anchorage	600	14F / J	12.0		59,634	840	0	44,712	105,186	52,593
06-3164	Office Assistant 1	FT	A	GP	Bethel	250	8B / C	12.0		49,317	0	2,652	39,985	91,954	45,977

Note: If a position is split, an asterisk (\*) will appear in the Split/Count column. If the split position is also counted in the component, two asterisks (\*\*) will appear in this column. [No valid job title] appearing in the Job Class Title indicates that the PCN has an invalid class code or invalid range for the class code effective date of this scenario.

**Personal Services Expenditure Detail**  
**Department of Family and Community Services**

**Scenario:** FY2023 Governor (18673)  
**Component:** Front Line Social Workers (3318)  
**RDU:** Children's Services (486)

PCN	Job Class Title	Time Status	Retire Code	Barg Unit	Location	Salary Sched	Range / Step	Comp Months	Split / Count	Annual Salaries	COLA	Premium Pay	Annual Benefits	Total Costs	UGF Amount
06-3170	Pro Svcs Sp 2	FT	A	GP	Wasilla	200	17A	9.0		41,988	0	0	31,217	73,205	43,923
06-3171	Pro Svcs Sp 2	FT	A	GP	Sitka	205	17A / B	12.0		61,016	0	1,314	44,212	106,542	63,925
06-3172	Pro Svcs Sp 2	FT	A	GP	Kotzebue	260	17C / D	12.0		96,798	0	0	58,275	155,073	93,044
06-3176	C/C Lic Spec 2	FT	A	SS	Anchorage	99	18M	12.0		89,228	1,256	0	56,786	147,270	73,635
06-3179	Social Services Associate	FT	A	GP	Bethel	250	12B / C	12.0		62,983	0	1,762	45,197	109,942	65,965
06-3180	Pro Svcs Sp 2	FT	A	GP	Utqiagvik	250	17C	12.0		90,363	0	7,119	58,554	156,036	93,622
06-3182	Pro Svcs Sp 2	FT	A	GP	Fairbanks	203	17A	12.0		57,662	0	1,734	43,015	102,411	61,447
06-3185	Pro Svcs Sp 2	FT	A	GP	Anchorage	200	17J / K	12.0		74,042	0	827	49,328	124,197	74,518
06-3186	Protective Services Manager 1	FT	A	SS	Juneau	205	21P	12.0		124,800	1,757	0	71,300	197,857	118,714
06-3187	Eligibility Technician 2	FT	A	GP	Anchorage	200	14L / M	12.0		63,115	0	0	44,532	107,647	53,824
06-3188	Pro Svcs Sp 2	FT	A	GP	Delta Junction	200	17C	12.0		60,236	0	560	43,586	104,382	62,629
06-3189	Pro Svcs Sp 2	FT	A	GP	King Salmon	250	17J / K	12.0		110,185	0	4,386	65,526	180,097	108,058
06-3191	Social Services Associate	FT	A	GP	Saint Marys	250	12G / J	12.0		75,979	0	0	49,781	125,760	75,456
06-3192	Pro Svcs Sp 4	FT	A	SS	Ketchikan	200	20A / B	12.0		77,746	1,222	9,030	55,786	143,784	86,270
06-3193	Social Services Associate	FT	A	GP	Bethel	250	12C	12.0		63,999	0	612	45,143	109,754	65,852
06-3194	Pro Svcs Sp 2	FT	A	GP	Gakona	200	17D / E	12.0		63,811	0	0	44,816	108,627	65,176
06-3195	Pro Svcs Sp 2	FT	A	GP	Petersburg	200	17A	9.0		41,988	0	6,234	33,761	81,983	49,190
06-3196	Social Services Associate	FT	A	GP	Fairbanks	203	12M	12.0		57,525	0	1,632	42,917	102,074	61,244
06-3197	Pro Svcs Sp 2	FT	A	GP	Kenai	200	17D / E	12.0		62,917	0	1,000	44,859	108,776	65,266
06-3198	Pro Svcs Sp 4	FT	A	SS	Bethel	250	20C / D	12.0		124,987	1,835	5,304	73,540	205,666	123,400
06-3200	Pro Svcs Sp 4	FT	A	SS	Fairbanks	203	20E / F	12.0		90,022	1,268	0	57,110	148,400	89,040
06-3201	Protective Services Manager 1	FT	A	SS	Bethel	250	21J	12.0		147,181	1,982	0	80,402	229,565	137,739
06-3202	Pro Svcs Sp 2	FT	A	GP	Wasilla	200	17L / M	12.0		78,533	0	6,849	53,617	138,999	83,399
06-3205	Pro Svcs Sp 2	FT	A	GP	Anchorage	200	17B / C	12.0		59,669	0	0	43,126	102,795	61,677
06-3206	Social Services Associate	FT	A	GP	Delta Junction	200	12C / D	12.0		43,004	0	306	36,452	79,762	47,857
06-3213	Pro Svcs Sp 2	FT	A	GP	Juneau	205	17A	12.0		58,793	0	8,942	46,417	114,152	68,491
06-3214	Pro Svcs Sp 2	FT	A	GP	Bethel	250	17B / C	12.0		87,725	0	4,474	56,399	148,598	89,159
06-3216	Pro Svcs Sp 1	FT	A	GP	Anchorage	200	15A	9.0		36,504	0	1,085	29,422	67,011	40,207
06-3217	Pro Svcs Sp 2	FT	A	GP	Fairbanks	203	17E / F	12.0		66,935	0	3,993	47,720	118,648	77,121
06-3243	Pro Svcs Sp 2	FT	A	GP	Wasilla	200	17A / B	12.0		57,543	0	0	42,259	99,802	59,881
06-3265	Eligibility Technician 2	FT	A	GP	Wasilla	200	14L / M	12.0		63,284	0	0	44,601	107,885	53,943
06-3269	Pro Svcs Sp 2	FT	A	GP	Anchorage	200	17E / F	12.0		65,637	0	4,524	47,407	117,568	70,541
06-3270	Pro Svcs Sp 2	FT	A	GP	Anchorage	200	17D / E	12.0		63,989	0	1,116	45,344	110,449	66,269
06-3271	Pro Svcs Sp 2	FT	A	GP	Fairbanks	203	17B / C	12.0		61,810	0	5,508	46,247	113,565	73,817
06-3278	Eligibility Technician 4	FT	A	SS	Wasilla	200	17F	12.0		72,821	1,025	0	50,092	123,938	61,969

Note: If a position is split, an asterisk (\*) will appear in the Split/Count column. If the split position is also counted in the component, two asterisks (\*\*) will appear in this column.  
[No valid job title] appearing in the Job Class Title indicates that the PCN has an invalid class code or invalid range for the class code effective date of this scenario.

**Personal Services Expenditure Detail**  
**Department of Family and Community Services**

**Scenario:** FY2023 Governor (18673)  
**Component:** Front Line Social Workers (3318)  
**RDU:** Children's Services (486)

PCN	Job Class Title	Time Status	Retire Code	Barg Unit	Location	Salary Sched	Range / Step	Comp Months	Split / Count	Annual Salaries	COLA	Premium Pay	Annual Benefits	Total Costs	UGF Amount
06-3350	Pro Svcs Sp 2	FT	A	GP	Fairbanks	203	17C	12.0		62,049	0	2,958	45,304	110,311	71,702
06-3354	Pro Svcs Sp 4	FT	A	SS	Anchorage	200	20L / M	12.0		99,824	1,422	1,173	61,588	164,007	104,965
06-3356	Pro Svcs Sp 2	FT	A	GP	Nome	237	17A / B	12.0		76,815	0	5,311	52,289	134,415	87,370
06-3365	Pro Svcs Sp 2	FT	A	GP	Wasilla	200	17B / C	12.0		58,163	0	8,581	46,013	112,757	73,292
06-3366	C/C Lic Spec 1	FT	A	GP	Anchorage	99	16M / N	12.0		71,037	0	0	47,764	118,801	59,401
06-3367	C/C Lic Spec 1	FT	A	GP	Ketchikan	200	16L / M	12.0		73,964	0	0	48,959	122,923	92,192
06-3368	Pro Svcs Sp 4	FT	A	SS	Wasilla	200	20L / M	12.0		98,631	1,389	0	60,623	160,643	102,812
06-3369	C/C Lic Spec 1	FT	A	GP	Fairbanks	203	16B / C	12.0		56,705	0	612	42,167	99,484	49,742
06-3370	C/C Lic Spec 2	FT	A	SS	Juneau	205	18C	12.0		73,882	1,059	1,326	51,066	127,333	63,667
06-3374	Pro Svcs Sp 1	FT	A	GP	Anchorage	200	15A	9.0		36,504	0	0	28,980	65,484	42,565
06-3375	Pro Svcs Sp 2	FT	A	GP	Anchorage	200	17A / B	12.0		56,604	0	8,976	45,538	111,118	72,227
06-3389	Social Services Associate	FT	A	GP	Fairbanks	203	12D / E	12.0		45,565	0	0	37,372	82,937	53,909
06-3390	Social Services Associate	FT	A	GP	Anchorage	200	12J / K	12.0		51,195	0	0	39,669	90,864	45,432
06-3398	C/C Lic Spec 1	FT	A	GP	Kenai	200	16F / G	12.0		64,418	0	1,020	45,480	110,918	55,459
06-3402	Pro Svcs Sp 2	FT	A	GP	Juneau	205	17C	12.0		63,239	0	14,060	50,319	127,618	82,952
06-3403	Pro Svcs Sp 2	FT	A	GP	Ketchikan	200	17A	9.0		41,988	0	2,201	32,115	76,304	49,598
06-3407	Pro Svcs Sp 2	FT	A	GP	Fairbanks	203	17A / B	12.0		57,716	0	0	42,329	100,045	65,029
06-3408	Pro Svcs Sp 4	FT	A	SS	Kenai	200	20B / C	12.0		78,963	1,186	5,269	54,748	140,166	89,706
06-3409	Pro Svcs Sp 2	FT	A	GP	Anchorage	200	17A / B	12.0		56,551	0	1,632	42,520	100,703	65,457
06-3411	Pro Svcs Sp 2	FT	A	GP	Wasilla	200	17B / C	12.0		58,943	0	0	42,830	101,773	66,153
06-3412	Pro Svcs Sp 4	FT	A	SS	Fairbanks	203	20C / D	12.0		85,693	1,283	5,406	57,550	149,932	95,957
06-3417	Pro Svcs Sp 2	FT	A	GP	Anchorage	200	17B / C	12.0		59,031	0	510	43,074	102,615	66,700
06-3418	Pro Svcs Sp 2	FT	A	GP	Kotzebue	260	17D / E	12.0		102,089	0	0	60,434	162,523	105,640
06-3421	Ss Prog Ofc	FT	A	SS	Anchorage	200	21K	12.0		101,296	1,426	0	61,710	164,432	164,432
06-3422	Pro Svcs Sp 2	FT	A	GP	Wasilla	200	17A	9.0		41,988	0	0	31,217	73,205	47,583
06-3423	Pro Svcs Sp 2	FT	A	GP	Anchorage	200	17M / N	12.0		79,160	0	4,528	52,926	136,614	88,799
06-3424	Pro Svcs Sp 1	FT	A	GP	Anchorage	200	15A	9.0		36,504	0	1,632	29,645	67,781	44,058
06-3425	Pro Svcs Sp 2	FT	A	GP	Anchorage	200	17B / C	12.0		58,677	0	561	42,950	102,188	66,422
06-3427	Pro Svcs Sp 2	FT	A	GP	Anchorage	200	17A	12.0		55,985	0	0	41,623	97,608	63,445
06-3428	Pro Svcs Sp 2	FT	A	GP	Anchorage	200	17A	12.0		55,985	0	0	41,623	97,608	63,445
06-3429	Pro Svcs Sp 2	FT	A	GP	Anchorage	200	17D / E	12.0		64,222	0	1,731	45,690	111,643	72,568
06-3430	Pro Svcs Sp 4	FT	A	SS	Anchorage	200	20D / E	12.0		85,491	1,218	1,020	55,678	143,407	91,781
06-3431	Pro Svcs Sp 2	FT	A	GP	Anchorage	200	17F / G	12.0		67,942	0	0	46,502	114,444	74,389
06-3432	Pro Svcs Sp 2	FT	A	GP	Anchorage	200	17F / G	12.0		68,218	0	3,121	47,888	119,227	77,498
06-3433	Pro Svcs Sp 2	FT	A	GP	Fairbanks	203	17A	9.0		43,246	0	0	31,730	74,976	48,734
06-3434	Pro Svcs Sp 2	FT	A	GP	Fairbanks	203	17A	12.0		57,662	0	2,652	43,389	103,703	67,407
06-3436	Pro Svcs Sp 2	FT	A	GP	Fairbanks	203	17B / C	12.0		60,121	0	0	43,311	103,432	67,231
06-3449	Social Services Associate	FT	A	GP	Wasilla	200	12B / C	12.0		42,320	0	1,813	36,788	80,921	52,599

Note: If a position is split, an asterisk (\*) will appear in the Split/Count column. If the split position is also counted in the component, two asterisks (\*\*) will appear in this column. [No valid job title] appearing in the Job Class Title indicates that the PCN has an invalid class code or invalid range for the class code effective date of this scenario.

**Personal Services Expenditure Detail**  
**Department of Family and Community Services**

**Scenario:** FY2023 Governor (18673)  
**Component:** Front Line Social Workers (3318)  
**RDU:** Children's Services (486)

PCN	Job Class Title	Time Status	Retire Code	Barg Unit	Location	Salary Sched	Range / Step	Comp Months	Split / Count	Annual Salaries	COLA	Premium Pay	Annual Benefits	Total Costs	UGF Amount
06-3462	Pro Svcs Sp 4	FT	A	SS	Utqiagvik	250	20D / E	12.0		126,849	1,806	1,452	72,728	202,835	129,814
06-3465	Pro Svcs Sp 4	FT	A	SS	Juneau	205	20C	12.0		84,365	1,239	3,617	56,278	145,499	93,119
06-3547	Social Services Associate	FT	A	GP	Wasilla	200	12M	12.0		55,848	0	0	41,567	97,415	63,320
06-3586	Administrative Officer 2	FT	A	SS	Anchorage	200	19C	12.0		75,067	1,057	0	51,009	127,133	63,567
06-3609	Administrative Assistant 2	FT	A	GG	Juneau	99	14N	12.0		69,557	0	0	47,161	116,718	58,359
06-3623	Administrative Assistant 2	FT	A	SS	Fairbanks	603	14J / K	12.0		62,655	882	0	45,945	109,482	54,741
06-3642	Pro Svcs Sp 2	FT	A	GP	Anchorage	200	17E / F	12.0		65,452	0	0	45,486	110,938	72,110
06-3663	Administrative Assistant 2	FT	A	SS	Wasilla	600	14B / C	12.0		52,535	740	0	41,816	95,091	47,546
06-3691	Pro Svcs Sp 4	FT	A	SS	Wasilla	200	20F / J	12.0		91,051	1,393	7,872	60,742	161,058	103,077
06-3708	Pro Svcs Sp 2	FT	A	GP	Juneau	205	17A	12.0		58,793	0	4,215	44,489	107,497	69,873
06-3710	Pro Svcs Sp 2	FT	A	GP	Ketchikan	200	17A	9.0		41,988	0	2,816	32,366	77,170	50,161
06-3712	Pro Svcs Sp 2	FT	A	GP	Anchorage	200	17L / M	12.0		78,429	0	510	50,988	129,927	84,453
06-3715	Pro Svcs Sp 4	FT	A	SS	Anchorage	99	20T	12.0		128,315	1,807	0	72,734	202,856	129,828
06-3716	Pro Svcs Sp 1	FT	A	GP	Anchorage	200	15A / B	9.0		37,864	0	0	29,535	67,399	43,809
06-3724	Pro Svcs Sp 4	FT	A	SS	Fairbanks	203	20J	12.0		94,661	1,395	4,386	60,792	161,234	103,190
06-3729	Pro Svcs Sp 2	FT	A	GP	Bethel	250	17A / B	12.0		85,152	0	1,371	54,083	140,606	91,394
06-3730	Office Assistant 1	FT	A	GP	Fairbanks	203	8B / C	12.0		34,078	0	0	32,685	66,763	33,382
06-3741	Pro Svcs Sp 2	FT	A	GP	Juneau	205	17A / B	12.0		59,015	0	51	42,880	101,946	66,265
06-3743	Pro Svcs Sp 4	FT	A	SS	Ketchikan	200	20B / C	12.0		78,179	1,101	0	52,278	131,558	85,513
06-3744	Pro Svcs Sp 2	FT	A	GP	Wasilla	200	17B / C	12.0		59,669	0	7,002	45,983	112,654	73,225
06-3745	Pro Svcs Sp 2	FT	A	GP	Kodiak	211	17A	9.0		46,610	0	3,447	34,509	84,566	54,968
06-3746	Pro Svcs Sp 2	FT	A	GP	Anchorage	99	17O	12.0		81,004	0	7,425	54,860	143,289	93,138
06-3747	Administrative Assistant 2	FT	A	SS	Anchorage	99	14M	12.0		69,711	983	102	48,865	119,661	59,831
06-3748	Social Services Associate	FT	A	GP	Anchorage	200	12C / D	12.0		42,699	0	102	36,244	79,045	51,379
06-3749	Pro Svcs Sp 2	FT	A	GP	Fairbanks	203	17B / C	12.0		60,396	0	459	43,610	104,465	67,902
06-3750	Social Services Associate	FT	A	GP	Fairbanks	203	12C / D	12.0		44,738	0	0	37,034	81,772	53,152
06-3751	Pro Svcs Sp 2	FT	A	GP	Fairbanks	203	17A / B	12.0		59,609	0	586	43,341	103,536	67,298
06-3763	Pro Svcs Sp 2	FT	A	GP	Anchorage	200	17F / G	12.0		67,208	0	547	46,425	114,180	74,217
06-3764	Pro Svcs Sp 2	FT	A	GP	Anchorage	200	17B / C	12.0		58,641	0	510	42,915	102,066	66,343
06-3765	Pro Svcs Sp 2	FT	A	GP	Fairbanks	203	17A / B	12.0		58,335	0	6,732	45,329	110,396	71,757
06-3766	Pro Svcs Sp 2	FT	A	GP	Fairbanks	203	17C / D	12.0		62,233	0	3,602	45,642	111,477	72,460
06-3767	Pro Svcs Sp 2	FT	A	GP	Kenai	200	17B / C	12.0		59,669	0	0	43,126	102,795	66,817
06-3769	Social Services Associate	FT	A	GP	Wasilla	200	12C	12.0		42,666	0	0	36,189	78,855	39,428
06-3770	Pro Svcs Sp 4	FT	A	SS	Fairbanks	203	20B / C	12.0		82,014	1,171	1,122	54,301	138,608	88,709
06-3771	Administrative Officer 1	FT	A	SS	Juneau	205	17A / B	12.0		66,238	933	0	47,406	114,577	57,289
06-3789	Pro Svcs Sp 2	FT	A	GP	Kenai	200	17A / B	12.0		57,951	0	4,692	44,340	106,983	69,539
06-3790	Pro Svcs Sp 2	FT	A	GP	Kenai	200	17G	12.0		68,952	0	1,428	47,496	117,876	76,619
06-3792	Protective Services Manager 1	FT	A	SS	Anchorage	200	21E / F	12.0		94,286	1,354	1,863	59,610	157,113	127,262

Note: If a position is split, an asterisk (\*) will appear in the Split/Count column. If the split position is also counted in the component, two asterisks (\*\*) will appear in this column.  
[No valid job title] appearing in the Job Class Title indicates that the PCN has an invalid class code or invalid range for the class code effective date of this scenario.



**Personal Services Expenditure Detail**  
**Department of Family and Community Services**

**Scenario:** FY2023 Governor (18673)  
**Component:** Front Line Social Workers (3318)  
**RDU:** Children's Services (486)

PCN	Job Class Title	Time Status	Retire Code	Barg Unit	Location	Salary Sched	Range / Step	Comp Months	Split / Count	Annual Salaries	COLA	Premium Pay	Annual Benefits	Total Costs	UGF Amount
06-3855	Social Services Associate	FT	A	GP	Utqiagvik	250	12B / C	12.0		63,775	0	9,936	48,855	122,566	79,668
06-3856	Office Assistant 1	FT	A	GP	Fairbanks	203	8C	12.0		34,515	0	0	32,863	67,378	33,689
06-3857	Social Services Associate	FT	A	GP	Fairbanks	203	12D / E	12.0		46,031	0	5,967	39,997	91,995	59,797
06-3858	Administrative Assistant 2	FT	A	GP	Wasilla	200	14J / K	12.0		58,580	0	0	42,682	101,262	50,631
06-3859	Social Services Associate	FT	A	GP	Kenai	200	12B / C	12.0		42,008	0	255	36,025	78,288	50,887
06-3860	Social Services Associate	FT	A	GP	Gakona	200	12E / F	12.0		45,793	0	259	37,571	83,623	54,355
06-3861	Office Assistant 1	FT	A	GP	Bethel	250	8C	9.6		40,201	0	852	31,775	72,828	36,414
06-3862	Pro Svcs Sp 2	FT	A	GP	Craig	200	17A	9.0		41,988	0	1,109	31,670	74,767	48,599
06-3863	Office Assistant 1	FT	A	GP	Anchorage	200	8B / C	12.0		32,764	0	0	32,149	64,913	32,457
06-3864	Social Services Associate	FT	A	GP	Juneau	205	12B / C	12.0		43,721	0	918	36,994	81,633	53,062
06-3866	Social Services Associate	FT	A	GP	Wasilla	200	12D / E	12.0		44,454	0	1,428	37,501	83,383	50,030
06-3867	Accounting Clerk	FT	A	GG	Fairbanks	203	10C	12.0		38,591	0	0	34,526	73,117	36,559
06-3869	Pro Svcs Sp 1	FT	A	GP	Anchorage	200	15A	9.0		36,504	0	0	28,980	65,484	42,565
06-3870	Pro Svcs Sp 2	FT	A	GP	Anchorage	200	17B / C	12.0		58,695	0	2,703	43,832	105,230	68,400
06-3872	Pro Svcs Sp 2	FT	A	GP	Anchorage	200	17A / B	12.0		56,162	0	1,081	42,136	99,379	59,627
06-3873	Pro Svcs Sp 2	FT	A	GP	Ketchikan	200	17A	12.0		55,985	0	1,916	42,405	100,306	60,184
06-3875	Pro Svcs Sp 2	FT	A	GP	Anchorage	200	17E / F	12.0		66,749	0	6,083	48,497	121,329	72,797
06-3876	Pro Svcs Sp 2	FT	A	GP	Fairbanks	203	17C	12.0		62,049	0	0	44,097	106,146	63,688
06-3877	Pro Svcs Sp 2	FT	A	GP	Kenai	200	17D / E	12.0		63,811	0	4,426	46,622	114,859	68,915
06-3878	Protective Services Manager 1	FT	A	SS	Anchorage	200	21J / K	12.0		101,031	1,423	0	61,602	164,056	98,434
06-3879	Pro Svcs Sp 4	FT	A	SS	Anchorage	99	20Q	12.0		115,236	1,685	4,466	69,220	190,607	114,364
06-3880	Pro Svcs Sp 2	FT	A	GP	Bethel	250	17A / B	12.0		85,099	0	1,000	53,910	140,009	84,005
06-3882	Pro Svcs Sp 2	FT	A	GP	Juneau	205	17A	12.0		58,793	0	4,896	44,766	108,455	65,073
06-3883	C/C Lic Spec 1	FT	A	GP	Anchorage	200	16B / C	12.0		55,565	0	0	41,452	97,017	48,509
06-3888	Pro Svcs Sp 2	FT	A	GP	Anchorage	200	17D / E	12.0		63,721	0	9,831	48,791	122,343	73,406
06-3890	Pro Svcs Sp 1	FT	A	GP	Anchorage	200	15A	9.0		36,504	0	204	29,063	65,771	39,463
06-3891	Pro Svcs Sp 4	FT	A	SS	Anchorage	200	20J / K	12.0		94,890	1,360	1,683	59,783	157,716	94,630
06-3892	Pro Svcs Sp 2	FT	A	GP	Anchorage	200	17A / B	12.0		56,516	0	0	41,840	98,356	59,014
06-3893	Pro Svcs Sp 2	FT	A	GP	Anchorage	200	17E / F	12.0		64,803	0	3,068	46,473	114,344	68,606
06-3894	Pro Svcs Sp 2	FT	A	GP	Bethel	250	17J / K	12.0		109,892	0	7,688	66,754	184,334	110,600
06-3895	Pro Svcs Sp 2	FT	A	GP	Bethel	250	17A / B	12.0		84,384	0	1,000	53,618	139,002	83,401
06-3896	Pro Svcs Sp 2	FT	A	GP	Anchorage	200	17A / B	12.0		56,357	0	1,000	42,183	99,540	59,724
06-3897	Pro Svcs Sp 2	FT	A	GP	Juneau	205	17A	12.0		58,793	0	2,927	43,963	105,683	68,694
06-3898	Pro Svcs Sp 2	FT	A	GP	Juneau	205	17A / B	12.0		59,274	0	3,162	44,255	106,691	69,349
06-3899	Office Assistant 2	FT	A	GP	Anchorage	200	10L	12.0		47,366	0	0	38,107	85,473	42,737
06-3900	Pro Svcs Sp 2	FT	A	GP	Anchorage	200	17E / F	12.0		65,544	0	799	45,849	112,192	72,925
06-3902	C/C Lic Spec 2	FT	A	SS	Fairbanks	203	18L	12.0		88,379	1,244	0	56,440	146,063	73,032
06-3903	C/C Lic Spec 1	FT	A	GP	Anchorage	200	16N	12.0		76,362	0	0	49,937	126,299	63,150

Note: If a position is split, an asterisk (\*) will appear in the Split/Count column. If the split position is also counted in the component, two asterisks (\*\*) will appear in this column. [No valid job title] appearing in the Job Class Title indicates that the PCN has an invalid class code or invalid range for the class code effective date of this scenario.

**Personal Services Expenditure Detail**  
**Department of Family and Community Services**

**Scenario:** FY2023 Governor (18673)  
**Component:** Front Line Social Workers (3318)  
**RDU:** Children's Services (486)

PCN	Job Class Title	Time Status	Retire Code	Barg Unit	Location	Salary Sched	Range / Step	Comp Months	Split / Count	Annual Salaries	COLA	Premium Pay	Annual Benefits	Total Costs	UGF Amount
06-3921	Office Assistant 1	FT	A	GP	Anchorage	200	8C	12.0		33,501	0	0	32,450	65,951	65,951
06-3922	Pro Svcs Sp 2	FT	A	GP	Anchorage	200	17B / C	12.0		58,695	0	1,000	43,137	102,832	66,841
06-3923	Office Assistant 1	FT	A	GP	Anchorage	200	8C	12.0		33,501	0	0	32,450	65,951	32,976
06-3924	Office Assistant 1	FT	A	GP	Anchorage	200	8D / E	12.0		34,906	0	0	33,023	67,929	33,965
06-3926	Pro Svcs Sp 2	FT	A	GP	Anchorage	200	17G	12.0		68,952	0	1,000	47,322	117,274	76,228
06-3927	Pro Svcs Sp 2	FT	A	GP	Anchorage	200	17B / C	12.0		58,889	0	1,000	43,216	103,105	67,018
06-3928	Pro Svcs Sp 4	FT	A	SS	Anchorage	200	20M / N	12.0		103,478	1,457	0	62,600	167,535	107,222
06-3929	Pro Svcs Sp 2	FT	A	GP	Anchorage	200	17A / B	12.0		57,437	0	1,173	42,694	101,304	65,848
06-3930	Pro Svcs Sp 4	FT	A	SS	Anchorage	200	20D / E	12.0		85,181	1,199	0	55,135	141,515	90,570
06-3931	Pro Svcs Sp 2	FT	A	GP	Anchorage	200	17B / C	12.0		59,846	0	4,428	45,005	109,279	66,660
06-3932	Pro Svcs Sp 1	FT	A	GP	Anchorage	200	15A	9.0		36,504	0	1,000	29,388	66,892	40,804
06-3933	Pro Svcs Sp 2	FT	A	GP	Utqiagvik	250	17A / B	12.0		85,894	0	0	53,826	139,720	85,229
06-3934	Pro Svcs Sp 2	FT	A	GP	Anchorage	200	17G / J	12.0		71,206	0	714	48,125	120,045	73,228
06-3935	Pro Svcs Sp 2	FT	A	GP	Anchorage	200	17D / E	12.0		64,436	0	0	45,071	109,507	66,799
06-3936	Pro Svcs Sp 4	FT	A	SS	Anchorage	200	20J / K	12.0		94,266	1,327	0	58,842	154,435	94,205
06-3937	Ss Prog Coord	FT	A	GP	Anchorage	200	20M / N	12.0		98,061	0	0	58,790	156,851	101,953
06-3938	Social Services Associate	FT	A	GP	Anchorage	200	12C / D	12.0		43,102	0	0	36,367	79,469	48,476
06-3939	Social Services Associate	FT	A	GP	Anchorage	200	12C / D	12.0		43,646	0	382	36,745	80,773	52,503
06-3940	Pro Svcs Sp 2	FT	A	GP	Wasilla	200	17J / K	12.0		72,384	0	6,777	51,079	130,240	79,446
06-3941	Social Services Associate	FT	A	GP	Anchorage	99	12N / O	12.0		57,741	0	150	42,401	100,292	65,190
06-3942	Social Services Associate	FT	A	GP	Anchorage	200	12E / F	12.0		46,313	0	0	37,677	83,990	54,594
06-3943	Social Services Associate	FT	A	GP	Anchorage	200	12G	12.0		48,672	0	0	38,639	87,311	56,752
06-3947	Pro Svcs Sp 1	FT	A	GP	Anchorage	200	15A	9.0		36,504	0	7,488	32,035	76,027	46,377
06-3950	Pro Svcs Sp 4	FT	A	SS	Fairbanks	203	20C / D	12.0		83,273	1,263	6,426	56,978	147,940	94,682
06-3951	Pro Svcs Sp 4	FT	A	SS	Juneau	205	20J / K	12.0		97,460	1,372	0	60,145	158,977	101,745
06-3954	Pro Svcs Sp 3	FT	A	GP	Fairbanks	203	19L / M	12.0		92,079	0	1,811	57,088	150,978	98,136
06-3955	Eligibility Technician 2	FT	A	GP	Wasilla	200	14G	12.0		55,985	0	0	41,623	97,608	48,804
06-3956	Pro Svcs Sp 2	FT	A	GP	Juneau	205	17A / B	12.0		59,793	0	12,530	48,289	120,612	78,398
06-3957	Pro Svcs Sp 2	FT	A	GP	Fairbanks	203	17A	9.0		43,246	0	1,000	32,138	76,384	49,650
06-3959	Pro Svcs Sp 2	FT	A	GP	Anchorage	200	17G / J	12.0		69,427	0	0	47,108	116,535	75,748
06-3960	Pro Svcs Sp 2	FT	A	GP	Anchorage	200	17M / N	12.0		81,627	0	2,193	52,980	136,800	88,920
06-3964	Office Assistant 1	FT	A	GP	Anchorage	200	8B / C	12.0		32,781	0	0	32,156	64,937	32,469
06-3966	Social Services Associate	FT	A	GP	Ketchikan	200	12C	12.0		42,666	0	0	36,189	78,855	51,256
06-3970	Administrative Assistant 2	FT	A	SS	Wasilla	600	14D / E	12.0		55,509	787	357	43,175	99,828	49,914
06-3971	Pro Svcs Sp 4	FT	A	SS	Sitka	205	20L / M	12.0		103,154	1,526	5,202	64,591	174,473	111,663
06-3976	C/C Lic Spec 1	FT	A	GP	Anchorage	200	16B / C	12.0		55,232	0	0	41,316	96,548	48,274
06-3997	Pro Svcs Sp 2	FT	A	GP	Fairbanks	203	17C / D	12.0		62,233	0	4,049	45,824	112,106	72,869
06-3999	Pro Svcs Sp 1	FT	A	GP	Anchorage	200	15A	9.0		36,504	0	0	28,980	65,484	42,565

Note: If a position is split, an asterisk (\*) will appear in the Split/Count column. If the split position is also counted in the component, two asterisks (\*\*) will appear in this column. [No valid job title] appearing in the Job Class Title indicates that the PCN has an invalid class code or invalid range for the class code effective date of this scenario.

**Personal Services Expenditure Detail**  
**Department of Family and Community Services**

**Scenario:** FY2023 Governor (18673)  
**Component:** Front Line Social Workers (3318)  
**RDU:** Children's Services (486)

PCN	Job Class Title	Time Status	Retire Code	Barg Unit	Location	Salary Sched	Range / Step	Comp Months	Split / Count	Annual Salaries	COLA	Premium Pay	Annual Benefits	Total Costs	UGF Amount
06-4009	Office Assistant 2	FT	A	GP	Wasilla	200	10B / C	12.0		37,226	0	459	34,157	71,842	35,921
06-4504	Pro Svcs Sp 3	FT	A	GP	Anchorage	200	19D / E	12.0		73,203	0	0	48,648	121,851	77,985
06-4505	Protective Services Manager 2	FT	A	SS	Juneau	205	22J / K	12.0		112,268	1,581	0	66,187	180,036	140,428
06-4506	Protective Services Manager 2	FT	A	SS	Anchorage	99	22L	12.0		116,419	1,639	0	67,880	185,938	145,032
06-4507	Protective Services Manager 2	FT	A	SS	Anchorage	200	22L	12.0		111,883	1,575	0	66,030	179,488	140,001
06-4513	Pro Svcs Sp 2	FT	A	GP	Anchorage	200	17E / F	12.0		66,749	0	0	46,015	112,764	68,786
06-4524	C/C Lic Spec 2	FT	A	SS	Fairbanks	203	18J / K	12.0		84,150	1,185	0	54,715	140,050	70,025
06-4532	Pro Svcs Sp 4	FT	A	SS	Wasilla	200	20B / C	12.0		79,204	1,153	2,652	53,779	136,788	87,544
06-4533	Pro Svcs Sp 2	FT	A	GP	Fairbanks	203	17A / B	12.0		59,609	0	12,903	48,366	120,878	73,736
06-4534	Pro Svcs Sp 2	FT	A	GP	Wasilla	200	17A / B	12.0		56,126	0	8,706	45,233	110,065	67,140
06-4535	Pro Svcs Sp 2	FT	A	GP	Kenai	200	17A / B	12.0		57,224	0	12,942	47,409	117,575	71,721
06-4536	Pro Svcs Sp 2	FT	A	GP	Kenai	200	17A / B	12.0		57,260	0	15,727	48,560	121,547	74,144
06-4537	Pro Svcs Sp 4	FT	P	SS	Kenai	200	20F / J	12.0		91,413	1,322	2,472	58,686	153,893	98,492
06-4538	Pro Svcs Sp 4	FT	A	SS	Anchorage	200	20C	12.0		80,350	1,156	1,734	53,872	137,112	87,752
06-4539	Pro Svcs Sp 2	FT	A	GP	Wasilla	200	17E / F	12.0		65,341	0	1,377	46,002	112,720	68,759
06-4540	Pro Svcs Sp 2	FT	A	GP	Anchorage	200	17J / K	12.0		72,384	0	1,769	49,036	123,189	75,145
06-4541	Pro Svcs Sp 3	FT	A	GP	Anchorage	200	19A	9.0		48,394	0	357	33,976	82,727	50,464
06-4542	Pro Svcs Sp 1	FT	A	GP	Anchorage	200	15A	9.0		36,504	0	0	28,980	65,484	39,945
06-4543	Pro Svcs Sp 2	FT	A	GP	Anchorage	200	17K / L	12.0		76,456	0	1,000	50,383	127,839	77,982
06-4544	Pro Svcs Sp 4	FT	A	SS	Anchorage	200	20B / C	12.0		79,707	1,163	2,884	54,078	137,832	88,213
06-4545	C/C Lic Spec 1	FT	A	GP	Anchorage	200	16C	12.0		55,985	0	0	41,623	97,608	48,804
06-4546	Social Services Associate	FT	A	GP	Anchorage	200	12B / C	12.0		42,620	0	0	36,170	78,790	51,214
06-4547	Pro Svcs Sp 2	FT	A	GP	Anchorage	200	17D / E	12.0		64,257	0	3,978	46,621	114,856	70,062
06-4548	Pro Svcs Sp 4	FT	A	SS	Bethel	250	20C / D	12.0		124,987	1,839	5,610	73,665	206,101	131,905
06-4549	Pro Svcs Sp 2	FT	A	GP	Anchorage	200	17J	12.0		71,799	0	13,880	53,738	139,417	85,044
06-4550	Pro Svcs Sp 3	FT	A	GP	Wasilla	200	19B / C	12.0		67,428	0	1,836	47,041	116,305	70,946
06-4551	Pro Svcs Sp 4	FT	A	SS	Fairbanks	99	20Q	12.0		121,602	1,734	1,581	70,640	195,557	125,157
06-4552	Pro Svcs Sp 2	FT	A	GP	Fairbanks	203	17A	12.0		57,662	0	6,566	44,986	109,214	70,989
06-4553	Pro Svcs Sp 3	FT	A	GP	Fairbanks	203	19B / C	12.0		69,511	0	0	47,142	116,653	75,825
06-4554	Pro Svcs Sp 2	FT	A	GP	Anchorage	200	17G	12.0		68,952	0	5,942	49,338	124,232	80,751
06-4555	Social Services Associate	FT	A	GP	Bethel	250	12B / C	12.0		63,482	0	0	44,682	108,164	70,307
06-4556	Pro Svcs Sp 2	FT	A	GP	Fairbanks	203	17N	12.0		84,084	0	847	53,433	138,364	89,937
06-4557	C/C Lic Spec 1	FT	A	GP	Fairbanks	203	16B / C	12.0		56,884	0	0	41,990	98,874	49,437
06-4558	Pro Svcs Sp 2	FT	A	GP	Fairbanks	203	17A / B	12.0		57,698	0	1,280	42,844	101,822	66,184
06-4567	C/C Lic Spec 3	FT	A	SS	Fairbanks	203	20M	12.0		104,187	1,467	0	62,890	168,544	84,272
06-4568	Social Services Associate	FT	A	GP	Fairbanks	203	12C / D	12.0		44,413	0	122	36,952	81,487	40,744

Note: If a position is split, an asterisk (\*) will appear in the Split/Count column. If the split position is also counted in the component, two asterisks (\*\*) will appear in this column. [No valid job title] appearing in the Job Class Title indicates that the PCN has an invalid class code or invalid range for the class code effective date of this scenario.

**Personal Services Expenditure Detail**  
**Department of Family and Community Services**

**Scenario:** FY2023 Governor (18673)  
**Component:** Front Line Social Workers (3318)  
**RDU:** Children's Services (486)

PCN	Job Class Title	Time Status	Retire Code	Barg Unit	Location	Salary Sched	Range / Step	Comp Months	Split / Count	Annual Salaries	COLA	Premium Pay	Annual Benefits	Total Costs	UGF Amount
06-4596	Eligibility Technician 2	FT	A	GP	Juneau	205	14B / C	12.0		50,737	0	0	39,482	90,219	45,110
06-4600	Pro Svcs Sp 2	FT	A	GP	Kotzebue	260	17B / C	12.0		93,655	0	0	56,993	150,648	97,921
06-4601	Nurse Consultant 1	FT	A	GP	Fairbanks	203	24J / K	12.0		121,758	0	0	68,459	190,217	89,402
06-4602	Accounting Technician 1	FT	A	GP	Wasilla	200	12C / D	12.0		43,210	0	258	36,516	79,984	64,787
06-4603	Nurse Consultant 1	FT	A	GP	Anchorage	200	24B / C	12.0		96,565	0	0	58,180	154,745	72,730
06-4604	Nurse Consultant 1	FT	A	GP	Wasilla	200	24G / J	12.0		114,154	0	0	65,356	179,510	84,370
06-4605	Office Assistant 1	FT	A	GP	Fairbanks	203	8N	12.0		46,137	0	0	37,605	83,742	41,871
06-4606	Nurse Consultant 2	FT	A	SS	Anchorage	200	26M / N	12.0		150,413	2,026	0	81,522	233,961	109,962
06-4607	Office Assistant 2	FT	A	GP	Anchorage	200	10E / F	12.0		40,718	0	0	35,394	76,112	38,056
06-4608	Accounting Technician 1	FT	A	GP	Wasilla	200	12C / D	12.0		43,700	0	493	36,812	81,005	40,503
06-4621	Social Services Associate	FT	A	GP	Anchorage	99	12P	12.0		63,462	0	0	44,674	108,136	69,207
06-4622	Social Services Associate	FT	A	GP	Anchorage	200	12D / E	12.0		45,208	0	1,581	37,871	84,660	55,029
06-4623	Social Services Associate	FT	A	GP	Anchorage	200	12B / C	12.0		41,697	0	0	35,794	77,491	49,594
06-4624	Project Assistant	FT	A	SS	Anchorage	600	16N	12.0		79,082	1,113	0	52,647	132,842	110,259
06-4626	Pro Svcs Sp 4	FT	A	SS	Anchorage	200	20E / F	12.0		86,334	1,254	2,730	56,719	147,037	94,104
06-4627	Pro Svcs Sp 1	FT	A	GP	Anchorage	200	15A	9.0		36,504	0	408	29,146	66,058	40,295
06-4628	Pro Svcs Sp 1	FT	A	GP	Anchorage	200	15A	9.0		36,504	0	4,234	30,707	71,445	43,582
06-4629	Pro Svcs Sp 2	FT	A	GP	Anchorage	200	17C / D	12.0		62,023	0	358	44,233	106,614	65,035
06-4630	Pro Svcs Sp 1	FT	A	GP	Anchorage	200	15A	9.0		36,504	0	0	28,980	65,484	39,945
06-4631	Pro Svcs Sp 2	FT	A	GP	Anchorage	200	17L	12.0		76,557	0	11,582	54,742	142,881	87,157
06-4632	Pro Svcs Sp 2	FT	A	GP	Anchorage	200	17A	12.0		55,985	0	1,000	42,031	99,016	60,400
06-4633	Protective Services Manager 1	FT	A	SS	Anchorage	200	21E / F	12.0		92,927	1,308	0	58,296	152,531	123,550
06-4634	Pro Svcs Sp 2	FT	A	GP	Kenai	200	17C / D	12.0		60,325	0	932	43,774	105,031	64,069
06-4638	Accounting Clerk	FT	A	GP	Fairbanks	203	10E / F	12.0		41,727	0	0	35,806	77,533	38,767
06-4639	Office Assistant 2	FT	A	GP	Fairbanks	203	10C / D	12.0		39,904	0	0	35,062	74,966	37,483
06-4640	Administrative Assistant 2	FT	A	SS	Anchorage	600	14D / E	12.0		56,298	793	0	43,351	100,442	50,221
06-4641	Administrative Assistant 2	FT	A	SS	Wasilla	600	14F	12.0		58,677	826	0	44,322	103,825	51,913
06-4642	Mental Health Clinician 3	FT	A	GP	Anchorage	200	21K	12.0		97,032	0	0	58,370	155,402	73,039
06-4644	Eligibility Technician 2	FT	A	GP	Wasilla	200	14G	12.0		55,985	0	0	41,623	97,608	48,804
06-4645	Eligibility Technician 2	FT	A	GP	Anchorage	200	14G / J	12.0		58,049	0	0	42,465	100,514	50,257
06-4646	Eligibility Technician 2	FT	A	GP	Juneau	205	14L / M	12.0		66,716	0	306	46,126	113,148	56,574
06-4647	Eligibility Technician 2	FT	A	GP	Wasilla	200	14L / M	12.0		62,608	0	0	44,325	106,933	53,467
06-4648	Pro Svcs Sp 2	FT	A	GP	Kenai	99	17R	12.0		93,642	0	0	56,987	150,629	97,909
06-4649	Pro Svcs Sp 2	FT	A	GP	Bethel	250	17A	12.0		83,987	0	14,726	59,056	157,769	102,550
06-4650	Pro Svcs Sp 2	FT	A	GP	Bethel	250	17A	9.0		62,990	0	10,924	44,243	118,157	76,802
06-4651	Pro Svcs Sp 2	FT	A	GP	Wasilla	200	17E / F	12.0		65,341	0	11,876	50,286	127,503	82,877
06-4652	Pro Svcs Sp 3	FT	A	GP	Wasilla	200	19G	12.0		78,800	0	1,020	51,348	131,168	85,259
06-4653	C/C Lic Spec 1	FT	A	GP	Wasilla	200	16G	12.0		64,526	0	591	45,349	110,466	55,233

Note: If a position is split, an asterisk (\*) will appear in the Split/Count column. If the split position is also counted in the component, two asterisks (\*\*) will appear in this column.  
[No valid job title] appearing in the Job Class Title indicates that the PCN has an invalid class code or invalid range for the class code effective date of this scenario.

**Personal Services Expenditure Detail**  
**Department of Family and Community Services**

**Scenario:** FY2023 Governor (18673)  
**Component:** Front Line Social Workers (3318)  
**RDU:** Children's Services (486)

PCN	Job Class Title	Time Status	Retire Code	Barg Unit	Location	Salary Sched	Range / Step	Comp Months	Split / Count	Annual Salaries	COLA	Premium Pay	Annual Benefits	Total Costs	UGF Amount
06-4655	C/C Lic Spec 1	FT	A	GP	Fairbanks	203	16C	12.0		57,662	0	0	42,307	99,969	49,985
06-4657	Pro Svcs Sp 2	FT	A	GP	Fairbanks	203	17G / J	12.0		73,335	0	13,005	54,008	140,348	91,226
06-4658	Pro Svcs Sp 2	FT	A	GP	Juneau	205	17B / C	12.0		62,738	0	11,755	49,174	123,667	80,384
06-4659	Pro Svcs Sp 2	FT	A	GP	Anchorage	200	17B / C	12.0		59,438	0	0	43,032	102,470	66,606
06-4660	Office Assistant 1	FT	A	GP	Anchorage	200	8C	12.0		33,501	0	0	32,450	65,951	32,976
06-4663	Social Services Associate	FT	A	GP	Kotzebue	260	12B / C	12.0		67,380	0	5,531	48,529	121,440	78,936
06-4664	Social Services Associate	FT	A	GP	Aniak	250	12N	12.0		86,502	0	1,428	54,657	142,587	92,682
06-4665	Office Assistant 1	FT	A	GP	Fairbanks	203	8C	12.0		34,515	0	0	32,863	67,378	33,689
06-4670	Office Assistant 3	FT	A	GP	Anchorage	200	11E / F	12.0		42,938	0	0	36,300	79,238	51,505
06-4671	Social Services Associate	FT	A	GP	Anchorage	200	12E / F	12.0		46,248	0	0	37,651	83,899	53,695
06-4672	Office Assistant 2	FT	A	GP	Wasilla	200	10J	12.0		44,441	0	0	36,913	81,354	40,677
06-4819	C/C Lic Spec 1	FT	A	GP	Bethel	250	16G	12.0		96,798	0	0	58,275	155,073	77,537
06-4922	Pro Svcs Sp 3	FT	A	GP	Wasilla	200	19B / C	12.0		66,895	0	1,954	46,872	115,721	64,804
06-8075	Eligibility Technician 2	FT	A	GP	Wasilla	200	14E / F	12.0		52,738	0	0	40,298	93,036	46,518
06-8104	Eligibility Technician 4	FT	A	SS	Anchorage	99	17Q	12.0		94,016	1,324	0	58,740	154,080	77,040
06-8149	Eligibility Technician 2	FT	A	GP	Anchorage	200	14A / B	12.0		46,807	0	0	37,879	84,686	42,343
06-8485	Pro Svcs Sp 2	FT	P	GP	Wasilla	200	17C / D	12.0		60,951	0	0	43,649	104,600	67,990
06-9131	Office Assistant 2	FT	A	GP	Anchorage	200	10E / F	12.0		40,309	0	0	35,227	75,536	37,768
06-9132	Social Services Associate	FT	A	GP	Anchorage	200	12D / E	12.0		44,883	0	0	37,094	81,977	53,285
06-9133	Pro Svcs Sp 3	FT	A	GG	Anchorage	99	19P	12.0		99,879	0	0	59,532	159,411	103,617
06-9134	Pro Svcs Sp 3	FT	A	GP	Anchorage	200	19J	12.0		82,076	0	0	52,268	134,344	87,324
06-9135	Pro Svcs Sp 3	FT	A	GP	Anchorage	200	19L / M	12.0		90,106	0	0	55,545	145,651	94,673
06-9136	Pro Svcs Sp 3	FT	A	GP	Wasilla	200	19C / D	12.0		71,400	0	0	47,913	119,313	77,554
06-9140	Pro Svcs Sp 2	FT	A	GP	Wasilla	99	17O / P	12.0		85,991	0	2,652	54,948	143,591	93,334
06-9141	Pro Svcs Sp 2	FT	A	GP	Juneau	205	17B / C	12.0		62,868	0	695	44,715	108,278	70,381
06-9142	Pro Svcs Sp 2	FT	A	GP	Fairbanks	203	17L / M	12.0		79,180	0	0	51,087	130,267	84,674
06-9143	Pro Svcs Sp 2	FT	A	GP	Anchorage	99	17N	12.0		81,198	0	1,000	52,318	134,516	87,435
06-9144	Ss Prog Coord	FT	A	GP	Anchorage	200	20B / C	12.0		73,354	0	0	48,710	122,064	79,342
06-9145	Ss Prog Coord	FT	A	GP	Anchorage	200	20D / E	12.0		78,312	0	0	50,733	129,045	83,879
06-9146	Pro Svcs Sp 2	FT	A	GP	Wasilla	200	17D / E	12.0		64,168	0	8,815	48,558	121,541	79,002
06-9147	Social Services Associate	FT	A	GP	Kenai	200	12B / C	12.0		41,789	0	0	35,831	77,620	50,453
06-9148	Pro Svcs Sp 2	FT	A	GP	Homer	200	17A	9.0		41,988	0	17,181	38,227	97,396	63,307
06-9149	Pro Svcs Sp 2	FT	A	GP	Wasilla	200	17C / D	12.0		61,397	0	8,828	47,433	117,658	76,478
06-9150	Pro Svcs Sp 2	FT	A	GP	Anchorage	200	17A	12.0		55,985	0	2,432	42,615	101,032	65,671
06-9151	Pro Svcs Sp 2	FT	P	GP	Bethel	250	17C / D	12.0		91,301	0	2,081	56,881	150,263	97,671
06-9152	Pro Svcs Sp 4	FT	A	SS	Homer	99	20O	12.0		106,242	1,532	2,552	64,769	175,095	112,061
06-9153	Pro Svcs Sp 2	FT	A	GP	Anchorage	200	17B / C	12.0		58,765	0	1,475	43,359	103,599	67,339
06-9154	Pro Svcs Sp 2	FT	A	GP	Anchorage	200	17B / C	12.0		59,474	0	1,000	43,455	103,929	67,554

Note: If a position is split, an asterisk (\*) will appear in the Split/Count column. If the split position is also counted in the component, two asterisks (\*\*) will appear in this column. [No valid job title] appearing in the Job Class Title indicates that the PCN has an invalid class code or invalid range for the class code effective date of this scenario.

**Personal Services Expenditure Detail**  
**Department of Family and Community Services**

**Scenario:** FY2023 Governor (18673)  
**Component:** Front Line Social Workers (3318)  
**RDU:** Children's Services (486)

PCN	Job Class Title	Time Status	Retire Code	Barg Unit	Location	Salary Sched	Range / Step	Comp Months	Split / Count	Annual Salaries	COLA	Premium Pay	Annual Benefits	Total Costs	UGF Amount
06-9155	Pro Svcs Sp 2	FT	A	GP	Anchorage	200	17A / B	12.0		57,030	0	1,000	42,458	100,488	65,317
06-9156	Pro Svcs Sp 3	FT	A	GP	Anchorage	200	19C / D	12.0		71,507	0	5,610	50,245	127,362	82,785
06-9157	Social Services Associate	FT	A	GP	Nome	237	12C	12.0		58,461	0	408	42,800	101,669	66,085
06-9158	Pro Svcs Sp 4	FT	A	SS	Anchorage	200	20E / F	12.0		87,535	1,269	2,578	57,147	148,529	95,059
06-9159	Pro Svcs Sp 4	FT	A	SS	Kotzebue	260	20E / F	12.0		141,331	2,001	7,244	80,885	231,461	148,135
06-9160	Pro Svcs Sp 2	FT	A	GP	Fairbanks	203	17A	12.0		57,662	0	0	42,307	99,969	64,980
06-9161	Pro Svcs Sp 2	FT	A	GP	Anchorage	200	17F / G	12.0		68,585	0	0	46,764	115,349	74,977
06-9162	Pro Svcs Sp 4	FT	A	SS	Anchorage	200	20M	12.0		101,150	1,490	4,660	63,552	170,852	109,345
06-9163	Social Services Associate	FT	A	GP	Anchorage	200	12F / G	12.0		47,290	0	0	38,076	85,366	55,488
06-9164	Pro Svcs Sp 1	FT	A	GP	Anchorage	200	15A	9.0		36,504	0	3,747	30,508	70,759	45,993
06-9165	Pro Svcs Sp 2	FT	A	GP	Anchorage	200	17J / K	12.0		73,554	0	1,590	49,440	124,584	80,980
06-9167	Pro Svcs Sp 4	FT	A	SS	Anchorage	200	20C / D	12.0		82,209	1,158	0	53,923	137,290	89,239
06-9168	Ss Prog Coord	FT	A	GP	Anchorage	200	20J / K	12.0		90,043	0	0	55,519	145,562	94,615
06-9171	Ss Prog Coord	FT	A	GP	Anchorage	200	20M / N	12.0		98,454	0	0	58,951	157,405	102,313
06-9172	C/C Lic Spec 1	FT	A	GP	Anchorage	200	16L / M	12.0		72,997	0	235	48,660	121,892	60,946
06-9173	C/C Lic Spec 1	FT	A	GP	Anchorage	99	16N	12.0		76,694	0	0	50,072	126,766	63,383
06-9174	C/C Lic Spec 1	FT	A	GP	Anchorage	99	16M	12.0		73,589	0	0	48,806	122,395	61,198
06-9175	C/C Lic Spec 1	FT	A	GP	Juneau	205	16G	12.0		67,743	0	268	46,530	114,541	57,271
06-9176	C/C Lic Spec 2	FT	A	SS	Anchorage	200	18C	12.0		70,366	991	0	49,091	120,448	60,224
06-9177	C/C Lic Spec 1	FT	A	GP	Wasilla	200	16B / C	12.0		54,755	0	1,040	41,546	97,341	48,671
06-9178	C/C Lic Spec 1	FT	A	GP	Kenai	200	16D / E	12.0		60,147	0	612	43,571	104,330	52,165
06-9179	C/C Lic Spec 1	FT	A	GP	Wasilla	200	16C	12.0		55,985	0	642	41,885	98,512	49,256
06-9180	C/C Lic Spec 1	FT	A	GP	Bethel	250	16C	12.0		83,987	0	0	53,048	137,035	68,518
06-9181	C/C Lic Spec 1	FT	A	GP	Fairbanks	203	16G / J	12.0		67,258	0	0	46,223	113,481	56,741
06-9182	Pro Svcs Sp 3	FT	A	GP	Anchorage	200	19C / D	12.0		70,229	0	5,765	49,787	125,781	81,758
06-9183	Pro Svcs Sp 4	FT	A	SS	Wasilla	200	20D / E	12.0		84,459	1,208	1,353	55,393	142,413	91,144
06-9184	Pro Svcs Sp 2	FT	A	GP	Wasilla	200	17E / F	12.0		66,378	0	2,984	47,081	116,443	75,688
06-9185	Pro Svcs Sp 1	FT	A	GP	Anchorage	200	15A	9.0		36,504	0	4,536	30,830	71,870	46,716
06-9186	Pro Svcs Sp 2	FT	A	GP	Wasilla	200	17B / C	12.0		58,943	0	1,000	43,238	103,181	67,068
06-9187	Pro Svcs Sp 2	FT	A	GP	Wasilla	200	17D / E	12.0		63,096	0	15,868	50,999	129,963	84,476
06-9188	Pro Svcs Sp 2	FT	A	GP	King Salmon	250	17A	9.0		62,990	0	14,928	45,877	123,795	80,467
06-9189	Pro Svcs Sp 2	FT	A	GP	Kenai	200	17A / B	12.0		56,038	0	2,592	42,702	101,332	65,866
06-9190	Pro Svcs Sp 2	FT	A	GP	Kenai	200	17B / C	12.0		58,323	0	4,480	44,405	107,208	69,685
06-9191	Pro Svcs Sp 2	FT	A	GP	Fairbanks	203	17A	12.0		57,662	0	1,854	43,064	102,580	66,677
06-9192	Pro Svcs Sp 2	FT	A	GP	Fairbanks	203	17B	12.0		59,846	0	5,112	45,284	110,242	71,657
06-9193	Pro Svcs Sp 2	FT	A	GP	Anchorage	200	17F / G	12.0		67,299	0	10,330	50,454	128,083	83,254
06-9194	Pro Svcs Sp 1	FT	A	GP	Anchorage	200	15A	9.0		36,504	0	0	28,980	65,484	42,565
06-9195	Pro Svcs Sp 2	FT	A	GP	Fairbanks	203	17B	12.0		59,846	0	0	43,198	103,044	66,979

Note: If a position is split, an asterisk (\*) will appear in the Split/Count column. If the split position is also counted in the component, two asterisks (\*\*) will appear in this column.  
 [No valid job title] appearing in the Job Class Title indicates that the PCN has an invalid class code or invalid range for the class code effective date of this scenario.

**Personal Services Expenditure Detail**  
**Department of Family and Community Services**

**Scenario:** FY2023 Governor (18673)  
**Component:** Front Line Social Workers (3318)  
**RDU:** Children's Services (486)

PCN	Job Class Title	Time Status	Retire Code	Barg Unit	Location	Salary Sched	Range / Step	Comp Months	Split / Count	Annual Salaries	COLA	Premium Pay	Annual Benefits	Total Costs	UGF Amount
06-9196	Pro Svcs Sp 2	FT	A	GP	Anchorage	200	17F	12.0		66,749	0	4,488	47,846	119,083	77,404
06-9267	Pro Svcs Sp 2	FT	A	GP	Anchorage	200	17A / B	12.0		57,189	0	0	42,114	99,303	64,547
06-9268	Accounting Clerk	FT	A	GP	Fairbanks	203	10F / G	12.0		43,467	0	0	36,516	79,983	39,992
06-9270	Pro Svcs Sp 2	FT	A	GP	Anchorage	200	17A / B	12.0		57,596	0	0	42,280	99,876	64,919
06-9271	Pro Svcs Sp 1	FT	A	GP	Anchorage	200	15A	9.0		36,504	0	3,353	30,348	70,205	45,633
06-9272	Pro Svcs Sp 2	FT	A	GP	Anchorage	200	17A / B	12.0		57,844	0	714	42,673	101,231	65,800
06-9273	C/C Lic Spec 3	FT	A	SS	Anchorage	200	20F	12.0		89,003	1,253	0	56,694	146,950	73,475
06-9274	C/C Lic Spec 2	FT	A	SS	Kenai	200	18J	12.0		80,475	1,133	0	53,215	134,823	67,412
06-9276	Social Services Associate	FT	A	GP	Wasilla	200	12B / C	12.0		41,824	0	408	36,012	78,244	50,859
06-9278	Pro Svcs Sp 2	FT	A	GP	Wasilla	200	17K / L	12.0		76,154	0	1,628	50,516	128,298	83,394
06-9279	Pro Svcs Sp 2	FT	A	GP	Anchorage	200	17G	12.0		68,952	0	6,188	49,438	124,578	80,976
06-9280	Pro Svcs Sp 1	FT	A	GP	Anchorage	200	15A	9.0		36,504	0	178	29,052	65,734	42,727
06-9281	Pro Svcs Sp 2	FT	A	GP	Anchorage	200	17B / C	12.0		59,704	0	2,499	44,160	106,363	69,136
06-9282	Pro Svcs Sp 1	FT	A	GP	Anchorage	200	15A	9.0		36,504	0	0	28,980	65,484	42,565
06-9283	Pro Svcs Sp 2	FT	A	GP	Wasilla	200	17C	12.0		60,236	0	1,000	43,766	105,002	68,251
06-9284	Pro Svcs Sp 2	FT	A	GP	Kenai	200	17D / E	12.0		62,559	0	3,147	45,589	111,295	72,342
06-9285	C/C Lic Spec 1	FT	A	GP	Wasilla	200	16D / E	12.0		58,340	0	619	42,837	101,796	50,898
06-9286	Office Assistant 1	FT	A	GP	Anchorage	200	8C / D	12.0		33,897	0	0	32,611	66,508	33,254
06-9287	Accounting Technician 1	FT	A	GP	Wasilla	200	12C / D	12.0		43,330	0	0	36,460	79,790	39,895
06-9288	Office Assistant 2	FT	A	GP	Wasilla	200	10C / D	12.0		37,876	0	255	34,339	72,470	36,235
06-9289	Protective Services Manager 1	FT	A	SS	Kenai	200	21M	12.0		107,973	1,520	0	64,434	173,927	140,881
06-9290	Pro Svcs Sp 4	FT	A	SS	Anchorage	200	20J	12.0		91,894	1,312	1,262	58,389	152,857	97,829
06-9291	Pro Svcs Sp 3	FT	A	GP	Wasilla	200	19A	9.0		48,394	0	1,734	34,538	84,666	55,033
06-9292	Pro Svcs Sp 2	FT	A	GP	Bethel	250	17A	9.0		62,990	0	0	39,786	102,776	66,804
06-9295	Administrative Officer 1	FT	A	SS	Bethel	250	17C / D	12.0		99,262	1,398	0	60,880	161,540	80,770
06-9296	Protective Services Manager 2	FT	A	SS	Anchorage	200	22F	12.0		101,650	1,431	0	61,855	164,936	128,650
06-9297	Pro Svcs Sp 2	FT	A	GP	Bethel	250	17G	12.0		103,428	0	21,216	69,636	194,280	126,282
06-9298	Pro Svcs Sp 2	FT	A	GP	Bethel	250	17B / C	12.0		88,151	0	6,849	57,541	152,541	99,152
06-9301	Pro Svcs Sp 2	FT	A	GP	Fairbanks	203	17D / E	12.0		64,712	0	0	45,184	109,896	71,432
06-9302	Pro Svcs Sp 2	FT	A	GP	Anchorage	200	17L / M	12.0		78,429	0	0	50,780	129,209	83,986
06-9303	Pro Svcs Sp 3	FT	A	GP	Bethel	250	19G	12.0		118,209	0	0	67,011	185,220	129,654
06-9305	Social Services Associate	FT	A	GP	Sitka	205	12J	12.0		53,274	0	0	40,517	93,791	65,654
06-9306	Social Services Associate	FT	A	GP	Craig	200	12D / E	12.0		44,298	0	0	36,855	81,153	49,503
06-9307	Social Services Associate	FT	A	GP	Anchorage	200	12G / J	12.0		49,878	0	0	39,132	89,010	54,296
06-9308	Social Services Associate	FT	A	GP	Anchorage	200	12E / F	12.0		46,313	0	0	37,677	83,990	51,234
06-9309	Social Services Associate	FT	A	GP	Anchorage	200	12C / D	12.0		42,971	0	0	36,313	79,284	48,363
06-9310	Social Services Associate	FT	A	GP	Anchorage	200	12D / E	12.0		44,948	0	0	37,120	82,068	50,062

Note: If a position is split, an asterisk (\*) will appear in the Split/Count column. If the split position is also counted in the component, two asterisks (\*\*) will appear in this column. [No valid job title] appearing in the Job Class Title indicates that the PCN has an invalid class code or invalid range for the class code effective date of this scenario.

**Personal Services Expenditure Detail**  
**Department of Family and Community Services**

**Scenario:** FY2023 Governor (18673)  
**Component:** Front Line Social Workers (3318)  
**RDU:** Children's Services (486)

PCN	Job Class Title	Time Status	Retire Code	Barg Unit	Location	Salary Sched	Range / Step	Comp Months	Split / Count	Annual Salaries	COLA	Premium Pay	Annual Benefits	Total Costs	UGF Amount
06-9311	Social Services Associate	FT	A	GP	Anchorage	200	12B / C	12.0		41,881	0	0	35,869	77,750	50,538
06-9312	Social Services Associate	FT	A	GP	Anchorage	200	12E / F	12.0		46,053	0	0	37,571	83,624	51,011
06-9313	Office Assistant 2	FT	A	GP	Anchorage	200	10B / C	12.0		36,960	0	0	33,861	70,821	35,411
06-9315	Pro Svcs Sp 2	FT	A	GP	Anchorage	200	17B / C	12.0		59,598	0	0	43,097	102,695	66,752
06-9316	Office Assistant 2	FT	A	GP	Anchorage	200	10B / C	12.0		37,748	0	0	34,183	71,931	35,966
06-9317	Office Assistant 2	FT	A	GP	Anchorage	200	10E / F	12.0		41,230	0	0	35,603	76,833	38,417
06-9318	Ss Prog Coord	FT	A	GP	Anchorage	200	20F / G	12.0		83,168	0	0	52,714	135,882	82,888
06-9319	Ss Prog Coord	FT	A	GP	Anchorage	200	20L	12.0		93,581	0	0	56,962	150,543	97,853
06-9320	Ss Prog Coord	FT	A	GP	Anchorage	200	20D / E	12.0		78,312	0	0	50,733	129,045	83,879
06-9321	Social Services Associate	FT	A	GP	Fairbanks	203	12B / C	12.0		43,028	0	0	36,337	79,365	51,587
06-9322	Pro Svcs Sp 2	FT	A	GP	Anchorage	200	17B / C	12.0		60,165	0	5,311	45,496	110,972	72,132
06-9323	Pro Svcs Sp 2	FT	A	GP	Ketchikan	200	17A	12.0		55,985	0	0	41,623	97,608	63,445
06-9324	Pro Svcs Sp 2	FT	A	GP	Anchorage	200	17C / D	12.0		60,325	0	0	43,394	103,719	63,269
06-9325	Pro Svcs Sp 2	FT	A	GP	Anchorage	200	17B / C	12.0		58,819	0	0	42,779	101,598	61,975
06-9326	Pro Svcs Sp 2	FT	A	GP	Anchorage	200	17C / D	12.0		62,381	0	0	44,233	106,614	65,035
06-9327	Pro Svcs Sp 2	FT	A	GP	Anchorage	200	17A / B	12.0		56,480	0	0	41,825	98,305	59,966
06-9328	Office Assistant 2	FT	A	GP	Wasilla	200	10C / D	12.0		38,877	0	0	34,643	73,520	36,760
06-9329	Pro Svcs Sp 2	FT	A	GP	Wasilla	200	17D / E	12.0		64,079	0	0	44,926	109,005	66,493
06-9330	Pro Svcs Sp 2	FT	A	GP	Wasilla	200	17F / G	12.0		66,840	0	0	46,052	112,892	68,864
06-9331	Pro Svcs Sp 2	FT	A	GP	Wasilla	200	17A / B	12.0		56,162	0	0	41,695	97,857	59,693
06-9332	C/C Lic Spec 1	FT	A	GP	Wasilla	200	16G / J	12.0		65,639	0	0	45,562	111,201	55,601
06-9333	C/C Lic Spec 1	FT	A	GP	Wasilla	200	16A / B	12.0		54,217	0	0	40,902	95,119	47,560
06-9334	Pro Svcs Sp 2	FT	A	GP	Wasilla	200	17F / G	12.0		67,024	0	0	46,127	113,151	69,022
06-9335	Pro Svcs Sp 2	FT	A	GP	Anchorage	200	17A	12.0		55,985	0	0	41,623	97,608	59,541
06-9336	Pro Svcs Sp 2	FT	A	GP	Anchorage	200	17G / J	12.0		70,969	0	0	47,737	118,706	72,411
06-9337	C/C Lic Spec 1	FT	A	GP	Anchorage	200	16G	12.0		64,526	0	0	45,108	109,634	54,817
06-9338	Pro Svcs Sp 2	FT	A	GP	Anchorage	200	17F / G	12.0		68,768	0	0	46,839	115,607	70,520
06-9339	Eligibility Technician 2	FT	A	GP	Anchorage	200	14C / D	12.0		48,748	0	0	38,671	87,419	43,710
06-9341	Pro Svcs Sp 2	FT	A	GP	Utqiagvik	250	17A	9.0		62,990	0	0	39,786	102,776	62,693
06-9342	Pro Svcs Sp 2	FT	A	GP	Kenai	200	17B / C	12.0		58,252	0	0	42,548	100,800	61,488
06-9343	Pro Svcs Sp 2	FT	A	GP	Kenai	200	17A	12.0		55,985	0	0	41,623	97,608	59,541
06-9344	Pro Svcs Sp 2	FT	A	GP	Kenai	200	17B / C	12.0		58,606	0	0	42,693	101,299	61,792
06-9345	Pro Svcs Sp 2	FT	A	GP	Wasilla	200	17A	12.0		55,985	0	0	41,623	97,608	59,541
06-9346	Pro Svcs Sp 2	FT	A	GP	Wasilla	200	17E / F	12.0		65,081	0	0	45,334	110,415	67,353
06-9347	Pro Svcs Sp 2	FT	A	GP	Wasilla	200	17A	9.0		41,988	0	0	31,217	73,205	44,655
06-9348	Pro Svcs Sp 2	FT	A	GP	Wasilla	200	17F / G	12.0		67,667	0	1,000	46,797	115,464	70,433
06-9349	Pro Svcs Sp 2	FT	A	GP	Wasilla	200	17A	12.0		55,985	0	0	41,623	97,608	59,541
06-9350	Pro Svcs Sp 2	FT	A	GP	Wasilla	200	17D / E	12.0		63,632	0	1,000	45,151	109,783	66,968

Note: If a position is split, an asterisk (\*) will appear in the Split/Count column. If the split position is also counted in the component, two asterisks (\*\*) will appear in this column. [No valid job title] appearing in the Job Class Title indicates that the PCN has an invalid class code or invalid range for the class code effective date of this scenario.



**Personal Services Expenditure Detail**  
**Department of Family and Community Services**

**Scenario:** FY2023 Governor (18673)  
**Component:** Front Line Social Workers (3318)  
**RDU:** Children's Services (486)

PCN	Job Class Title	Time Status	Retire Code	Barg Unit	Location	Salary Sched	Range / Step	Comp Months	Split / Count	Annual Salaries	COLA	Premium Pay	Annual Benefits	Total Costs	UGF Amount
06-9351	Pro Svcs Sp 2	FT	A	GP	Wasilla	200	17A / B	12.0		58,004	0	0	42,447	100,451	61,275
06-9352	Pro Svcs Sp 2	FT	A	GP	Wasilla	200	17C / D	12.0		61,755	0	0	43,977	105,732	64,497
06-9353	Pro Svcs Sp 2	FT	P	GP	Wasilla	200	17A / B	9.0		42,166	0	0	31,290	73,456	44,808
06-9354	Pro Svcs Sp 2	FT	A	GP	Wasilla	200	17D / E	12.0		63,721	0	0	44,779	108,500	66,185
06-9355	Pro Svcs Sp 2	FT	A	GP	Wasilla	200	17B / C	12.0		58,447	0	0	42,628	101,075	61,656
06-9356	Pro Svcs Sp 2	FT	A	GP	Kotzebue	260	17A	9.0		67,187	0	0	41,498	108,685	66,298
06-9357	Pro Svcs Sp 3	FT	A	GP	Wasilla	200	19C / D	12.0		70,208	0	0	47,426	117,634	71,757
06-9358	Pro Svcs Sp 4	FT	A	SS	Wasilla	200	20J	12.0		91,894	1,294	0	57,874	151,062	92,148
06-9359	Pro Svcs Sp 4	FT	A	SS	Wasilla	200	20J / K	12.0		93,142	1,311	0	58,383	152,836	93,230
06-9360	Pro Svcs Sp 2	FT	A	GP	Fairbanks	203	17D / E	12.0		66,089	0	0	45,746	111,835	68,219
06-9361	Social Services Associate	FT	A	GP	Wasilla	200	12D / E	12.0		45,364	0	0	37,290	82,654	50,419
06-9362	Office Assistant 2	FT	A	GP	Wasilla	200	10B / C	12.0		36,950	0	0	33,857	70,807	35,404
06-9363	Office Assistant 2	FT	A	GP	Wasilla	200	10E / F	12.0		40,104	0	0	35,144	75,248	37,624
06-9364	Social Services Associate	FT	A	GP	Wasilla	200	12F / G	12.0		47,751	0	0	38,264	86,015	52,469
06-9365	Pro Svcs Sp 2	FT	A	GP	Anchorage	200	17D / E	12.0		62,917	0	0	44,451	107,368	65,495
06-9366	Pro Svcs Sp 2	FT	A	GP	Anchorage	200	17A / B	12.0		56,445	0	0	41,811	98,256	59,936
06-9367	Pro Svcs Sp 2	FT	A	GP	Anchorage	200	17D / E	12.0		63,721	0	0	44,779	108,500	66,185
06-9368	Pro Svcs Sp 2	FT	A	GP	Fairbanks	203	17A / B	12.0		57,844	0	0	42,382	100,226	100,226
06-9369	Pro Svcs Sp 3	FT	A	GP	Anchorage	200	19D / E	12.0		72,732	0	0	48,456	121,188	73,925
06-9370	Pro Svcs Sp 2	FT	A	GP	Anchorage	200	17A / B	12.0		58,039	0	0	42,461	100,500	61,305
06-9371	Pro Svcs Sp 3	FT	A	GP	Wasilla	200	19B / C	12.0		67,942	0	0	46,502	114,444	69,811
06-9373	Office Assistant 2	FT	A	GP	Wasilla	200	10B / C	12.0		37,595	0	0	34,120	71,715	35,858
06-9374	Pro Svcs Sp 2	FT	A	GG	Wrangell	100	17C	12.0		60,197	0	0	43,342	103,539	7,520
06-9380	Pro Svcs Sp 2	FT	A	GP	Anchorage	200	17C / D	12.0		60,593	0	0	43,503	104,096	63,499
06-9381	Pro Svcs Sp 2	FT	A	GP	Anchorage	200	17E / F	12.0		65,915	0	0	45,675	111,590	68,070
06-9382	Pro Svcs Sp 2	FT	A	GP	Anchorage	200	17B / C	12.0		59,438	0	0	43,032	102,470	62,507
06-9383	Program Coordinator 2	FT	A	GP	Anchorage	200	20C	12.0		73,769	0	0	48,879	122,648	73,589
06-9384	Office Assistant 2	FT	A	GP	Wasilla	200	10G	12.0		42,666	0	0	36,189	78,855	39,428
06-9385	Office Assistant 2	FT	A	GP	Anchorage	200	10C / D	12.0		37,857	0	0	34,227	72,084	36,042
06-9386	Social Services Associate	FT	A	GP	Valdez	211	12C / D	12.0		48,748	0	0	38,671	87,419	52,451
06-9387	Social Services Associate	FT	A	GP	Kenai	200	12B / C	12.0		41,847	0	0	35,855	77,702	46,621
06-9388	Social Services Associate	FT	A	GP	Petersburg	200	12C	12.0		42,666	0	0	36,189	78,855	47,313
06-9389	Pro Svcs Sp 2	FT	A	GP	Kodiak	211	17B / C	12.0		66,610	0	1,000	46,366	113,976	68,386
06-9390	Pro Svcs Sp 1	FT	A	GP	Anchorage	200	15A	9.0		36,504	0	0	28,980	65,484	39,290
06-9391	Pro Svcs Sp 4	FT	A	SS	Anchorage	200	20E / F	12.0		88,202	1,242	0	56,368	145,812	87,487
06-9392	Pro Svcs Sp 4	FT	A	SS	Anchorage	200	20B / C	12.0		79,064	1,113	0	52,639	132,816	79,690
06-9393	Pro Svcs Sp 4	FT	A	SS	Anchorage	200	20B / C	12.0		80,089	1,128	0	53,058	134,275	80,565
06-9394	Pro Svcs Sp 2	FT	A	GP	Fairbanks	203	17A / B	12.0		59,027	0	0	42,864	101,891	61,135

Note: If a position is split, an asterisk (\*) will appear in the Split/Count column. If the split position is also counted in the component, two asterisks (\*\*) will appear in this column. [No valid job title] appearing in the Job Class Title indicates that the PCN has an invalid class code or invalid range for the class code effective date of this scenario.

**Personal Services Expenditure Detail**  
**Department of Family and Community Services**

**Scenario:** FY2023 Governor (18673)  
**Component:** Front Line Social Workers (3318)  
**RDU:** Children's Services (486)

PCN	Job Class Title	Time Status	Retire Code	Barg Unit	Location	Salary Sched	Range / Step	Comp Months	Split / Count	Annual Salaries	COLA	Premium Pay	Annual Benefits	Total Costs	UGF Amount
06-9395	Pro Svcs Sp 2	FT	A	GP	Fairbanks	203	17A / B	12.0		59,773	0	0	43,169	102,942	61,765
06-9396	Pro Svcs Sp 2	FT	A	GP	Kotzebue	260	17A	12.0		89,583	0	0	55,331	144,914	86,948
06-9397	Pro Svcs Sp 2	FT	A	GP	Kotzebue	260	17A	9.0		67,187	0	0	41,498	108,685	65,211
06-9398	Pro Svcs Sp 2	FT	A	GP	Nome	237	17A	9.0		57,520	0	0	37,554	95,074	57,044
06-9399	Pro Svcs Sp 2	FT	A	GP	Craig	200	17A	9.0		41,988	0	215	31,305	73,508	44,105
06-N12024	Pro Svcs Sp 2	NP	N	GP	Anchorage	100	17A	12.0		56,511	0	69,552	38,964	165,027	62,710
06-N17018	Pro Svcs Sp 2	NP	N	GP	Fairbanks	103	17E	5.0		27,950	0	0	12,300	40,250	24,955

	Total Positions	New	Deleted	Total Salary Costs:
<b>Full Time Positions:</b>	528	0	0	34,442,758
<b>Part Time Positions:</b>	0	0	0	<b>Total COLA:</b> 123,890
<b>Non Permanent Positions:</b>	2	0	0	<b>Total Premium Pay:</b> 916,252
<b>Positions in Component:</b>	530	0	0	<b>Total Benefits:</b> 24,242,944
				<b>Total Pre-Vacancy:</b> 59,725,844
				<b>Minus Vacancy Adjustment of 7.83%:</b> (4,676,944)
				<b>Total Post-Vacancy:</b> 55,048,900
				<b>Plus Lump Sum Premium Pay:</b> 0
				<b>Personal Services Line 100:</b> 55,048,900

PCN Funding Sources:	Pre-Vacancy	Post-Vacancy	Percent
1002 Federal Receipts	23,358,026	21,528,932	39.11%
1003 General Fund Match	2,384,284	2,197,578	3.99%
1004 General Fund Receipts	33,900,498	31,245,856	56.76%
1007 Interagency Receipts	12,419	11,447	0.02%
1108 Statutory Designated Program Receipts	70,617	65,087	0.12%
<b>Total PCN Funding:</b>	<b>59,725,844</b>	<b>55,048,900</b>	<b>100.00%</b>

Note: If a position is split, an asterisk (\*) will appear in the Split/Count column. If the split position is also counted in the component, two asterisks (\*\*) will appear in this column. [No valid job title] appearing in the Job Class Title indicates that the PCN has an invalid class code or invalid range for the class code effective date of this scenario.

**ADMIN UNIT**

Administrative Operations  
 Manager 2  
 06-0621  
 R23 CL  
 Juneau

**FAMILY SERVICES**

Protective Services  
 Specialist 2  
 06-N12024  
 R17 CL  
 Anchorage

Protective Services  
 Manager 2  
 06-4506  
 R22 CL  
 Anchorage

Administrative  
 Officer 2  
 06-3586  
 R19 CL  
 Anchorage

Office Assistant 2  
 06-3899  
 R10 CL  
 Anchorage

Protective Services  
 Manager 1  
 06-4633  
 R21 CL  
 Anchorage

Office Assistant 2  
 06-3082  
 R10 CL  
 Anchorage

Protective Services  
 Specialist 3  
 06-4504  
 R19 CL  
 Anchorage

Administrative  
 Assistant 2  
 06-3161  
 R14 CL  
 Anchorage

Administrative  
 Assistant 2  
 06-4640  
 R14 CL  
 Anchorage

Protective  
 Services  
 Specialist 4  
 06-3928  
 R20 CL  
 Anchorage

Protective  
 Services  
 Specialist 4  
 06-4626  
 R20 CL  
 Anchorage

Protective  
 Services  
 Specialist 4  
 06-4544  
 R20 CL  
 Anchorage

Protective  
 Services  
 Specialist 4  
 06-3018  
 R20 CL  
 Anchorage

Protective  
 Services  
 Specialist 4  
 06-3125  
 R20 CL  
 Anchorage

Office Assistant 2  
 06-9385  
 R10 CL  
 Anchorage

Office Assistant 3  
 06-4670  
 R11 CL  
 Anchorage

Accounting  
 Technician 1  
 06-3063  
 R12 CL  
 Anchorage

Protective Services  
 Specialist 2  
 06-9279  
 R17 CL  
 Anchorage

Protective Services  
 Specialist 2  
 06-3425  
 R17 CL  
 Anchorage

Protective Services  
 Specialist 2  
 06-3712  
 R17 CL  
 Anchorage

Protective Services  
 Specialist 1  
 06-3216  
 R15 CL  
 Anchorage

Protective Services  
 Specialist 2  
 06-4543  
 R17 CL  
 Anchorage

Office Assistant 1  
 06-3924  
 R8 CL  
 Anchorage

Office Assistant 1  
 06-4660  
 R8 CL  
 Anchorage

Office Assistant 2  
 06-3156  
 R10 CL  
 Anchorage

Protective Services  
 Specialist 2  
 06-3431  
 R17 CL  
 Anchorage

Protective Services  
 Specialist 2  
 06-9155  
 R17 CL  
 Anchorage

Protective Services  
 Specialist 2  
 06-9267  
 R17 CL  
 Anchorage

Protective Services  
 Specialist 1  
 06-9282  
 R15 CL  
 Anchorage

Protective Services  
 Specialist 2  
 06-3931  
 R17 CL  
 Anchorage

Office Assistant 1  
 06-3964  
 R8 CL  
 Anchorage

Office Assistant 1  
 06-3035  
 R8 CL  
 Anchorage

Office Assistant 2  
 06-4607  
 R10 CL  
 Anchorage

Protective Services  
 Specialist 2  
 06-3432  
 R17 CL  
 Anchorage

Protective Services  
 Specialist 2  
 06-3929  
 R17 CL  
 Anchorage

Protective Services  
 Specialist 2  
 06-9370  
 R17 CL  
 Anchorage

Protective Services  
 Specialist 1  
 06-3869  
 R15 CL  
 Anchorage

Protective Services  
 Specialist 2  
 06-3409  
 R17 CL  
 Anchorage

Office Assistant 1  
 06-3921  
 R8 CL  
 Anchorage

Office Assistant 1  
 06-3923  
 R8 CL  
 Anchorage

Office Assistant 2  
 06-9313  
 R10 CL  
 Anchorage

Protective Services  
 Specialist 2  
 06-3076  
 R17 CL  
 Anchorage

Protective Services  
 Specialist 1  
 06-9390  
 R15 CL  
 Anchorage

Protective Services  
 Specialist 2  
 06-9366  
 R17 CL  
 Anchorage

Protective Services  
 Specialist 1  
 06-3100  
 R15 CL  
 Anchorage

Protective Services  
 Specialist 2  
 06-9381  
 R17 CL  
 Anchorage

Office Assistant 1  
 06-3863  
 R8 CL  
 Anchorage

Office Assistant 1  
 06-9286  
 R8 CL  
 Anchorage

Social Services  
 Associate  
 06-3390  
 R12 CL  
 Anchorage

Protective Services  
 Specialist 2  
 06-9335  
 R17 CL  
 Anchorage

Protective Services  
 Specialist 2  
 06-9270  
 R17 CL  
 Anchorage

Protective Services  
 Specialist 1  
 06-3098  
 R15 CL  
 Anchorage

Protective Services  
 Specialist 2  
 06-3417  
 R17 CL  
 Anchorage

Social Services  
 Associate  
 06-4622  
 R12 CL  
 Anchorage

Protective Services  
 Manager 2  
 06-4506  
 R22 CL  
 Anchorage

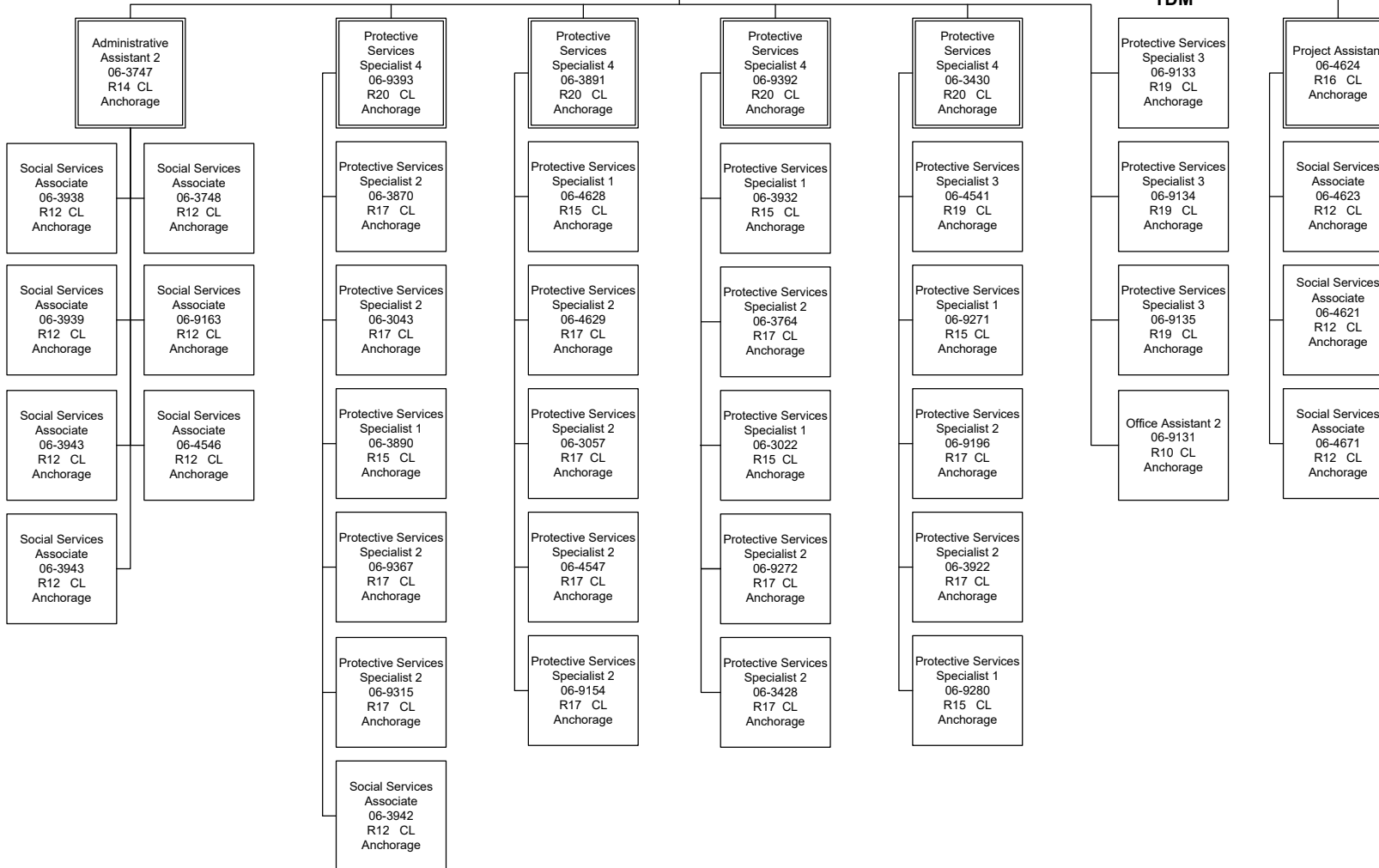
Protective Services  
 Manager 1  
 06-3878  
 R21 CL  
 Anchorage

**FAMILY SERVICES**

**TDM**

**ASPIN UNIT**

Protective Services  
 Specialist 3  
 06-4636  
 R19 CL  
 Juneau



Protective Services  
 Manager 2  
 06-4506  
 R22 CL  
 Anchorage

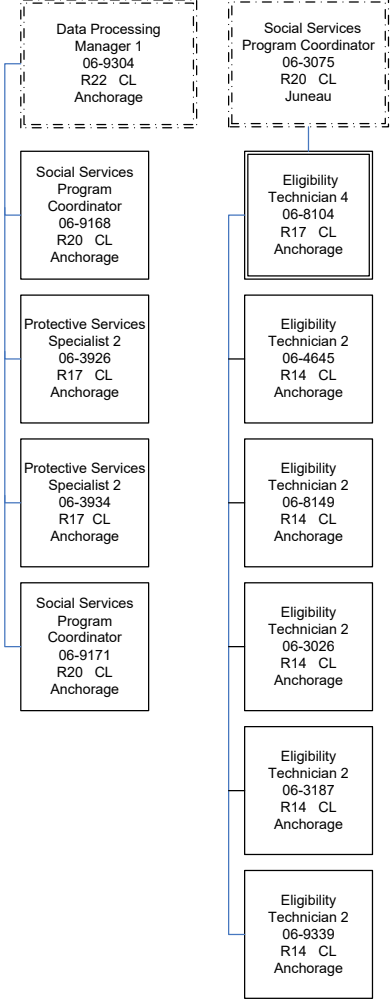
Protective Services  
 Manager 1  
 06-3085  
 R21 CL  
 Anchorage

**INITIAL ASSESSMENTS**



**ORCA UNIT**

**ET UNIT**



Social Services  
 Program Administrator  
 06-4502  
 R23 CL  
 Anchorage

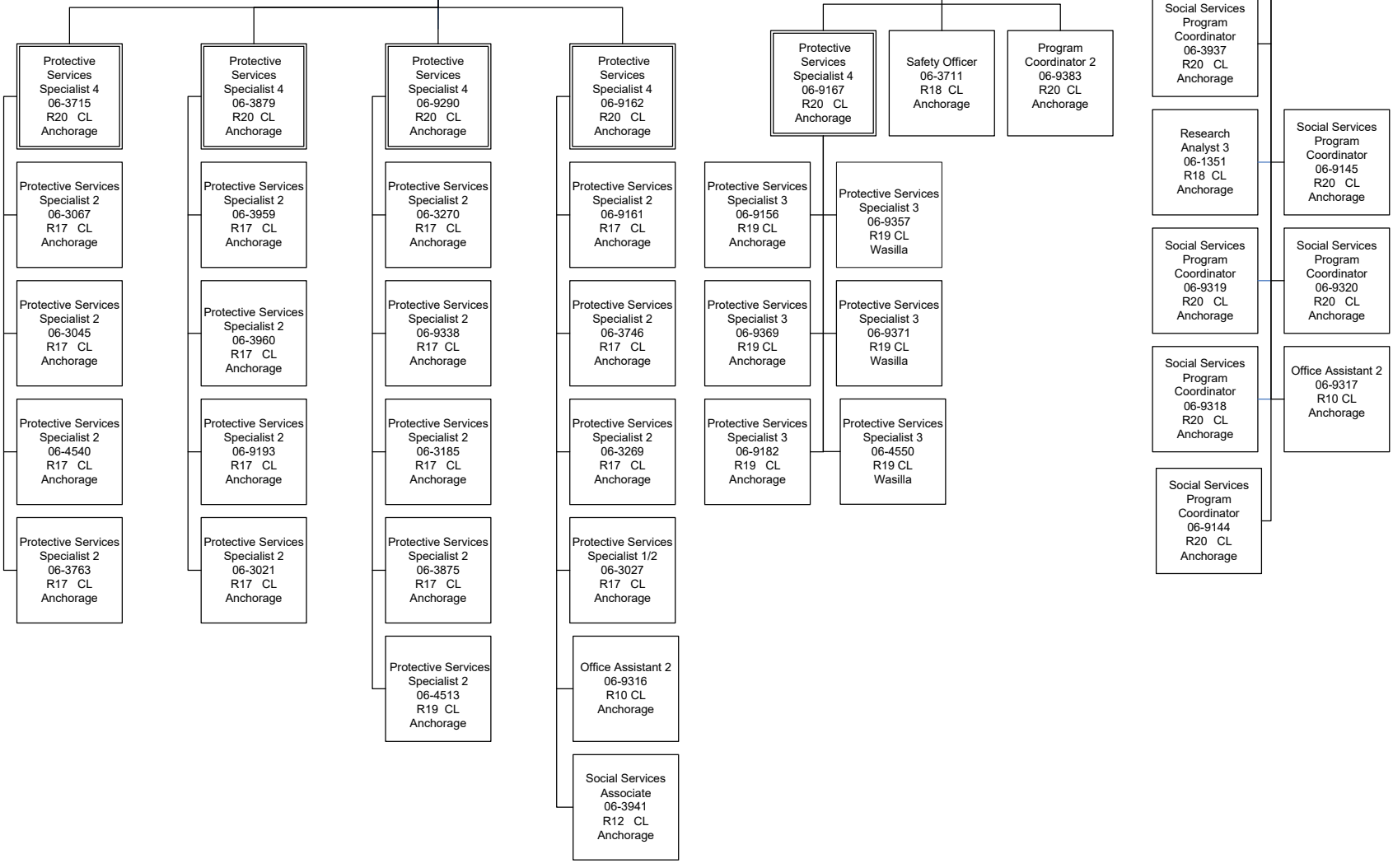
**QUALITY ASSURANCE UNIT**

**CENTRALIZED INTAKE**

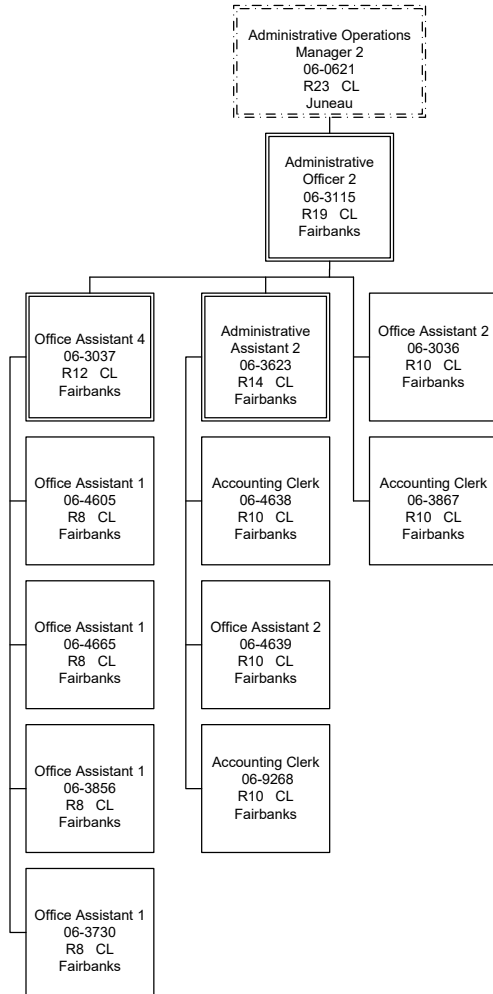
Protective Services  
 Manager 1  
 06-3792  
 R21 CL  
 Anchorage

**Mentor Team/  
 Safety**

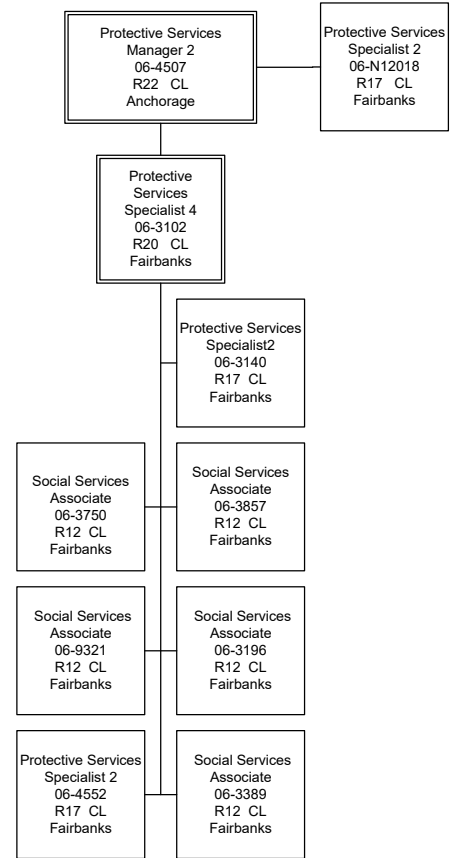
Social Services  
 Program Officer  
 06-3421  
 R21 CL  
 Anchorage



**ADMIN UNIT**



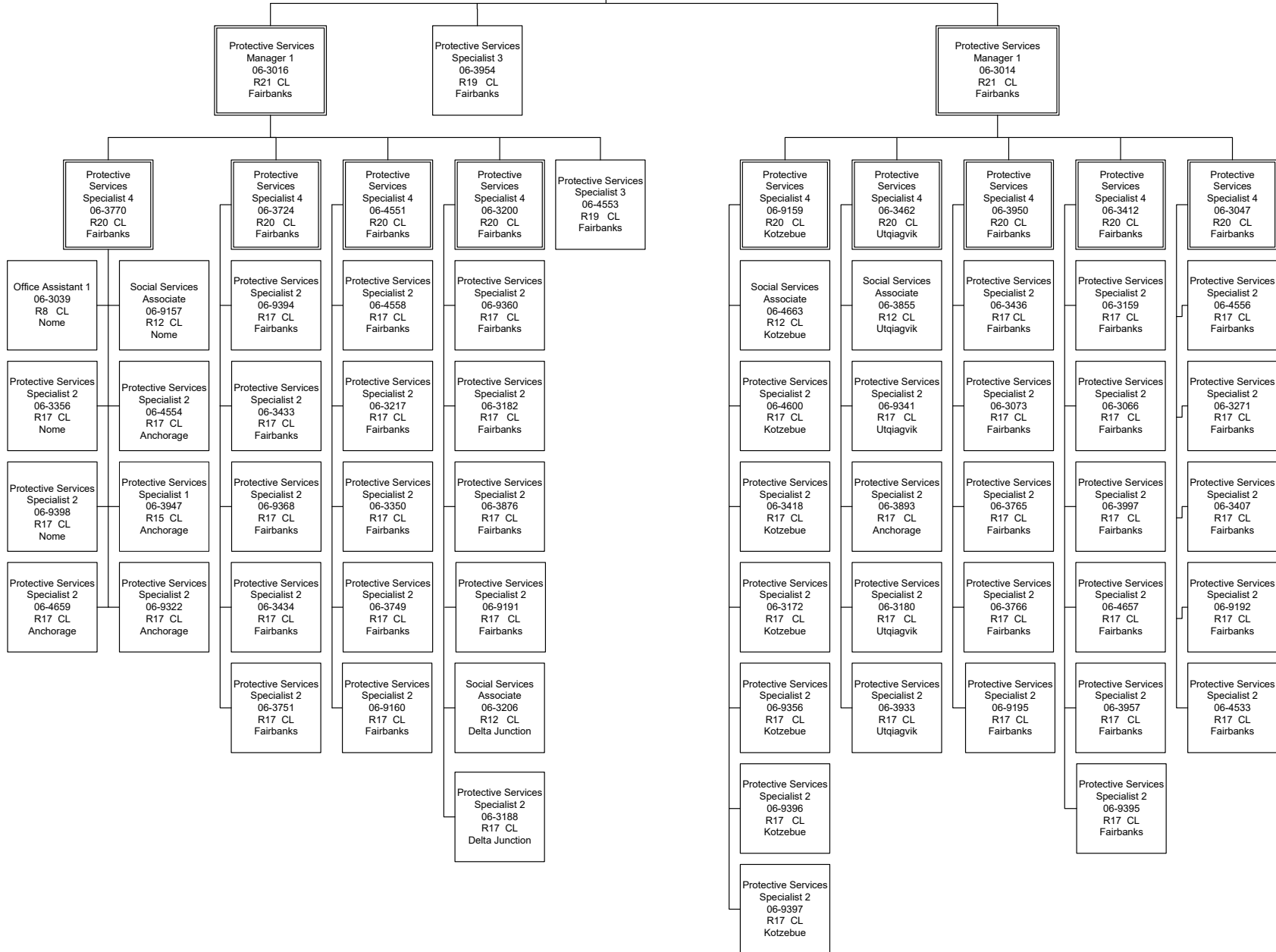
**PERMANENCY**



Protective Services  
 Manager 2  
 06-4507  
 R22 CL  
 Anchorage

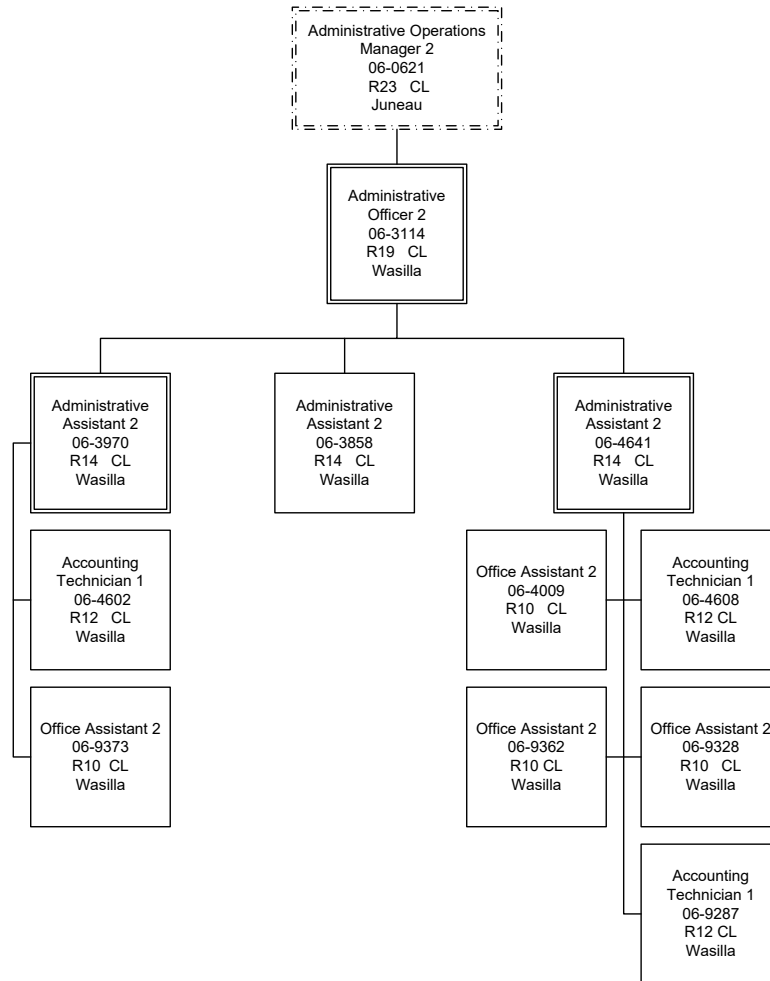
**INITIAL ASSESSMENTS**

**FAMILY SERVICES**

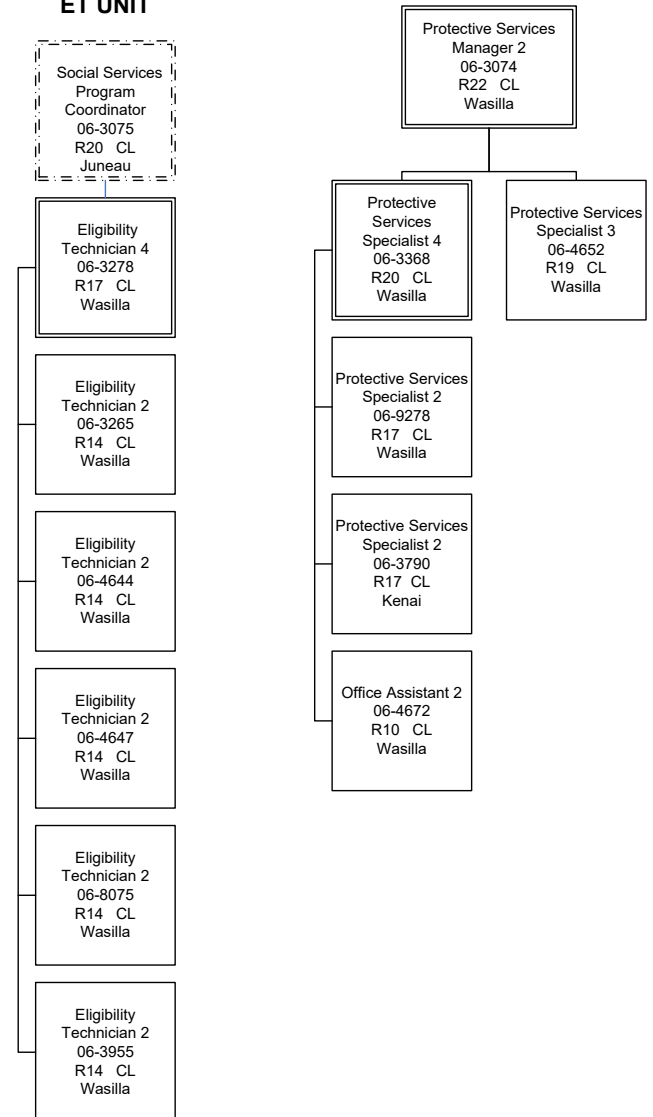




**ADMIN UNIT**



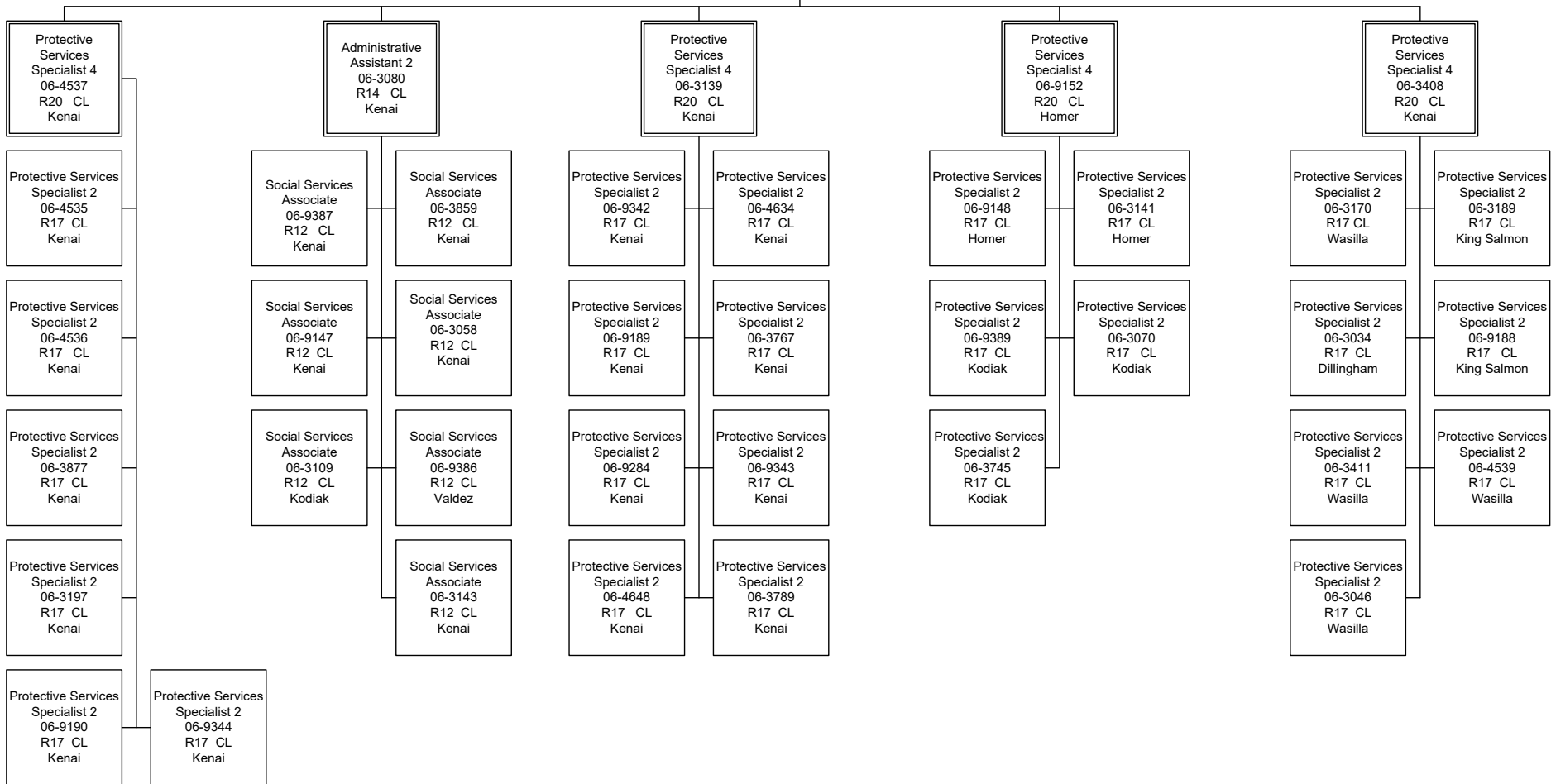
**ET UNIT**



Department of Family and Community Services  
 Office of Children's Services  
 Front Line Social Workers (2305)  
 FY2023 Governor

Protective Services  
 Manager 2  
 06-3074  
 R22 CL  
 Wasilla

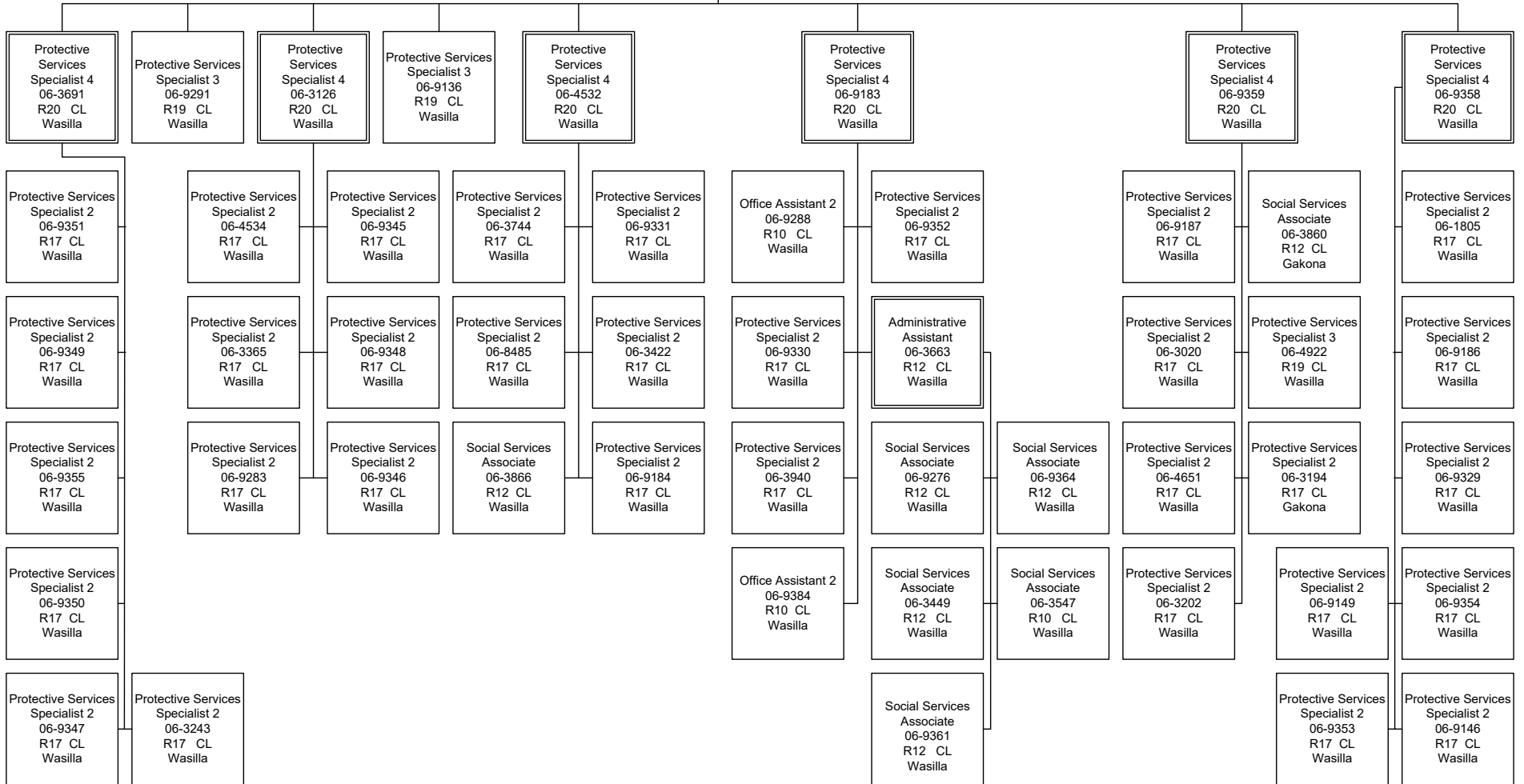
Protective Services  
 Manager 1  
 06-9289  
 R21 CL  
 Kenai



Department of Family and Community Services  
 Office of Children's Services  
 Front Line Social Workers (2305)  
 FY2023 Governor

Protective Services  
 Manager 2  
 06-3074  
 R22 CL  
 Wasilla

Protective Services  
 Manager 1  
 06-3015  
 R21 CL  
 Wasilla



**ADMIN UNIT**

Administrative  
 Officer 2  
 06-0662  
 R19 CL  
 Juneau

Social Services  
 Program Officer  
 06-4614  
 R21 CL  
 Juneau

Administrative  
 Officer 1  
 06-3771  
 R17 CL  
 Juneau

Eligibility  
 Technician 2  
 06-4596  
 R14 CL  
 Juneau

Administrative  
 Assistant 2  
 06-3609  
 R14 CL  
 Juneau

Eligibility  
 Technician 2  
 06-4646  
 R14 CL  
 Juneau

Office Assistant 1  
 06-3031  
 R8 CL  
 Juneau

Office Assistant 2  
 06-3062  
 R10 CL  
 Juneau

Protective Services  
 Manager 2  
 06-4505  
 R22 CL  
 Juneau

Protective Services  
 Manager 1  
 06-3186  
 R21 CL  
 Juneau

Protective Services  
 Specialist 3  
 06-3069  
 R19 CL  
 Juneau

Protective  
 Services  
 Specialist 4  
 06-3951  
 R20 CL  
 Juneau

Protective  
 Services  
 Specialist 4  
 06-3743  
 R20 CL  
 Ketchikan

Protective  
 Services  
 Specialist 4  
 06-3971  
 R20 CL  
 Sitka

Protective  
 Services  
 Specialist 4  
 06-3192  
 R20 CL  
 Ketchikan

Protective  
 Services  
 Specialist 4  
 06-3096  
 R20 CL  
 Juneau

Protective  
 Services  
 Specialist 4  
 06-3465  
 R20 CL  
 Juneau

Protective Services  
 Specialist 2  
 06-3065  
 R17 CL  
 Juneau

Social Services  
 Associate  
 06-3108  
 R12 CL  
 Juneau

Social Services  
 Associate  
 06-3864  
 R12 CL  
 Juneau

Social Services  
 Associate  
 06-3154  
 R12 CL  
 Juneau

Protective Services  
 Specialist 2  
 06-3117  
 R17 CL  
 Ketchikan

Social Services  
 Associate  
 06-9388  
 R12 CL  
 Petersburg

Social Services  
 Associate  
 06-9305  
 R12 CL  
 Sitka

Protective Services  
 Specialist 2  
 06-3029  
 R17 CL  
 Ketchikan

Social Services  
 Associate  
 06-3966  
 R12 CL  
 Ketchikan

Protective Services  
 Specialist 2  
 06-3897  
 R17 CL  
 Juneau

Protective Services  
 Specialist 2  
 06-3956  
 R17 CL  
 Juneau

Protective Services  
 Specialist 2  
 06-3882  
 R17 CL  
 Juneau

Protective Services  
 Specialist 2  
 06-9323  
 R17 CL  
 Ketchikan

Protective Services  
 Specialist 2  
 06-3171  
 R17 CL  
 Sitka

Protective Services  
 Specialist 2  
 06-3048  
 R17 CL  
 Juneau

Protective Services  
 Specialist 2  
 06-3710  
 R17 CL  
 Ketchikan

Protective Services  
 Specialist 2  
 06-3403  
 R17 CL  
 Ketchikan

Protective Services  
 Specialist 2  
 06-4658  
 R17 CL  
 Juneau

Protective Services  
 Specialist 2  
 06-3213  
 R17 CL  
 Juneau

Protective Services  
 Specialist 2  
 06-3741  
 R17 CL  
 Juneau

Protective Services  
 Specialist 2  
 06-3873  
 R17 CL  
 Ketchikan

Social Services  
 Associate  
 06-9306  
 R12 CL  
 Craig

Protective Services  
 Specialist 2  
 06-3195  
 R17 CL  
 Petersburg

Protective Services  
 Specialist 2  
 06-9399  
 R17 CL  
 Craig

Protective Services  
 Specialist 2  
 06-3025  
 R17 CL  
 Juneau

Protective Services  
 Specialist 2  
 06-3708  
 R17 CL  
 Juneau

Protective Services  
 Specialist 2  
 06-3862  
 R17 CL  
 Craig

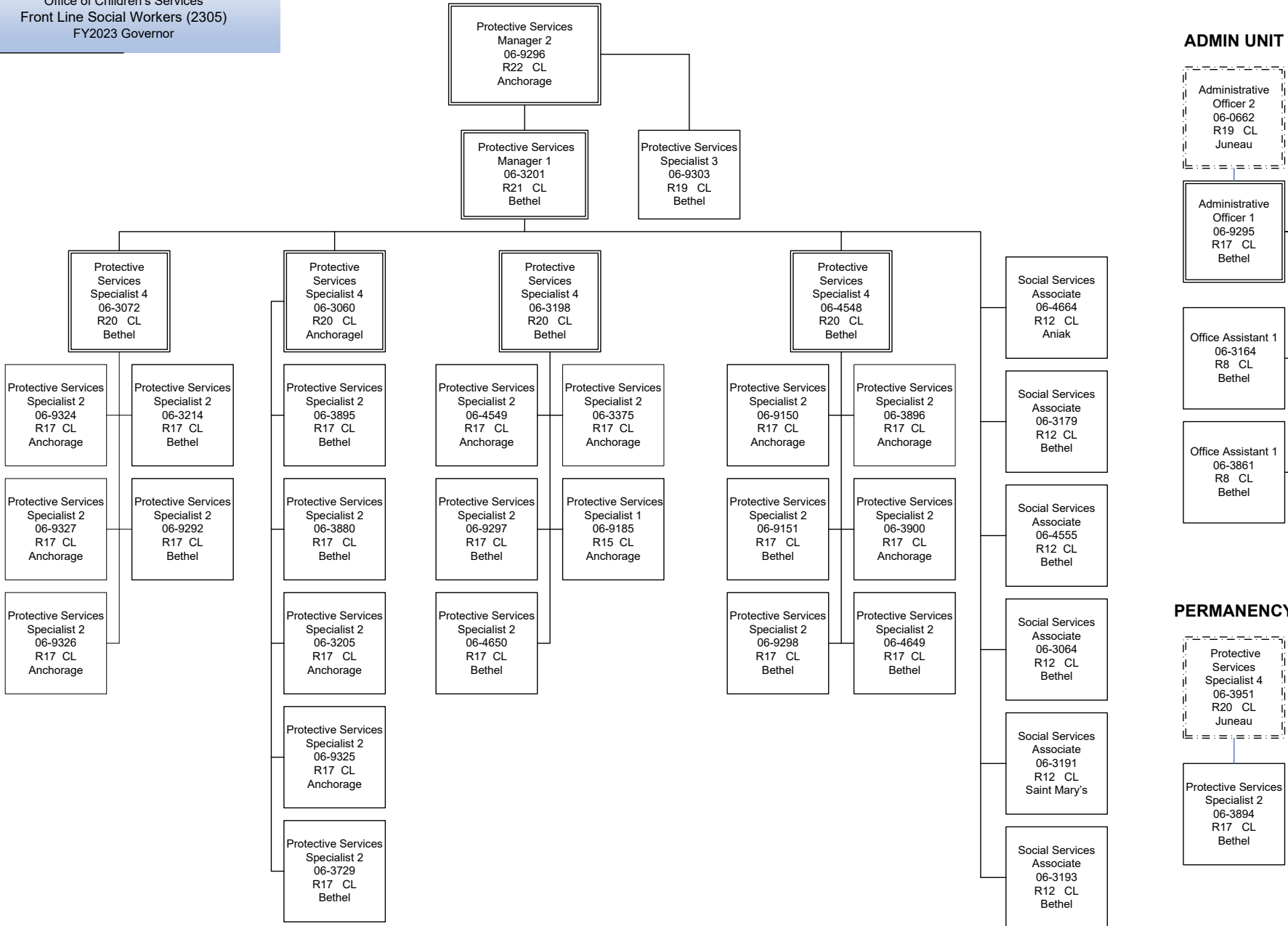
Social Services  
 Associate  
 06-3030  
 R12 CL  
 Ketchikan

Protective Services  
 Specialist 2  
 06-9374  
 R17 CL  
 Wrangell

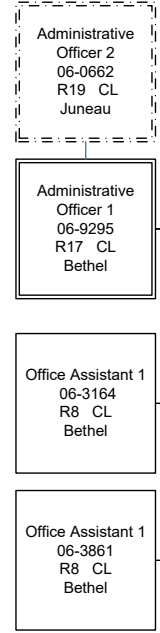
Protective Services  
 Specialist 2  
 06-3402  
 R17 CL  
 Juneau

Protective Services  
 Specialist 2  
 06-3898  
 R17 CL  
 Juneau

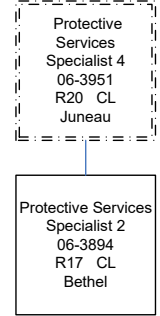
Department of Family and Community Services  
 Office of Children's Services  
 Front Line Social Workers (2305)  
 FY2023 Governor



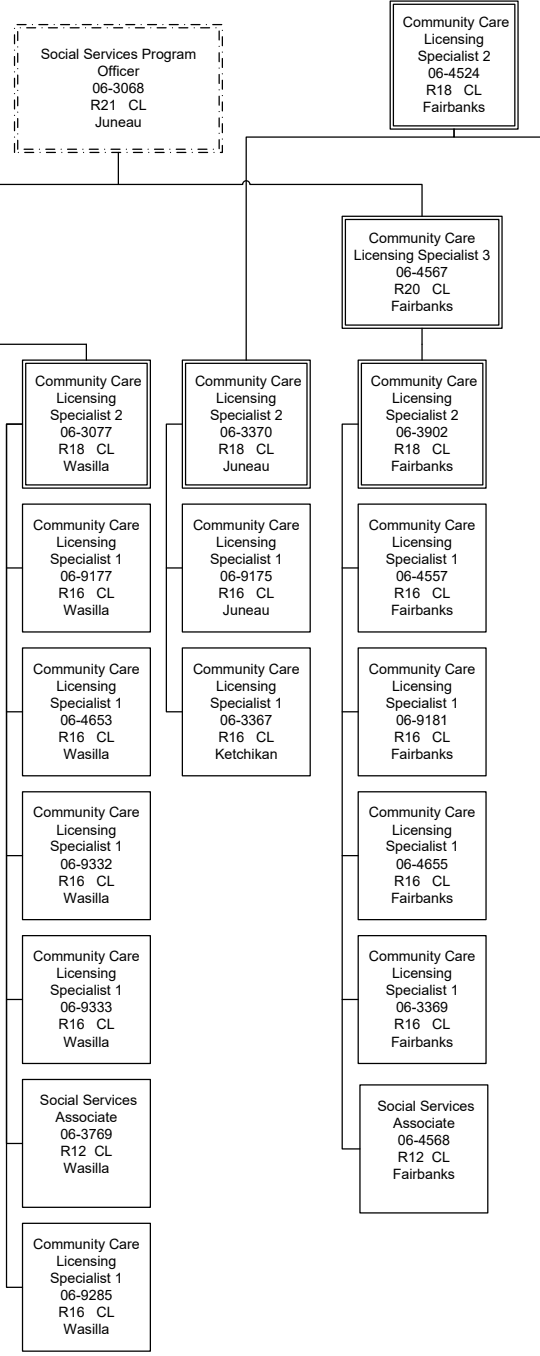
**ADMIN UNIT**



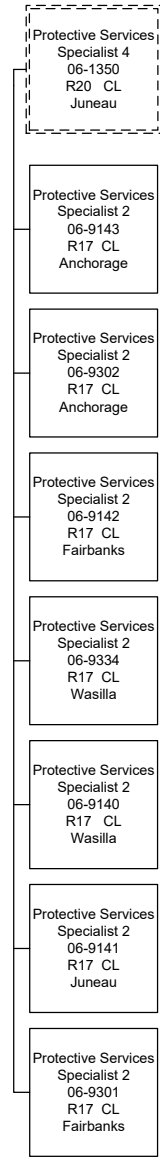
**PERMANENCY**



**LICENSING UNIT**



**INDEPENDENT LIVING UNIT**



**NURSING UNIT**

