

ADMIN UNIT

Administrative Operations
 Manager 2
 06-0621
 R23 CL
 Juneau

Administrative
 Officer 2
 06-3586
 R19 CL
 Anchorage

Office Assistant 2
 06-3899
 R10 CL
 Anchorage

Administrative
 Assistant 2
 06-3161
 R14 CL
 Anchorage

Administrative
 Assistant 2
 06-4640
 R14 CL
 Anchorage

Office Assistant 2
 06-9385
 R10 CL
 Anchorage

Office Assistant 3
 06-4670
 R11 CL
 Anchorage

Accounting
 Technician 1
 06-3063
 R12 CL
 Anchorage

Office Assistant 1
 06-3924
 R8 CL
 Anchorage

Office Assistant 1
 06-4660
 R8 CL
 Anchorage

Office Assistant 2
 06-3156
 R10 CL
 Anchorage

Office Assistant 1
 06-3964
 R8 CL
 Anchorage

Office Assistant 1
 06-3035
 R8 CL
 Anchorage

Office Assistant 2
 06-4607
 R10 CL
 Anchorage

Office Assistant 1
 06-3921
 R8 CL
 Anchorage

Office Assistant 1
 06-3923
 R8 CL
 Anchorage

Office Assistant 2
 06-9313
 R10 CL
 Anchorage

Office Assistant 1
 06-3863
 R8 CL
 Anchorage

Office Assistant 1
 06-9286
 R8 CL
 Anchorage

FAMILY SERVICES

Protective Services
 Specialist 2
 06-N12024
 R17 CL
 Anchorage

Protective Services
 Manager 2
 06-4506
 R22 CL
 Anchorage

Protective Services
 Manager 1
 06-4633
 R21 CL
 Anchorage

Office Assistant 2
 06-3082
 R10 CL
 Anchorage

Protective Services
 Specialist 3
 06-4504
 R19 CL
 Anchorage

Protective
 Services
 Specialist 4
 06-3928
 R20 CL
 Anchorage

Protective
 Services
 Specialist 4
 06-4626
 R20 CL
 Anchorage

Protective
 Services
 Specialist 4
 06-4544
 R20 CL
 Anchorage

Protective
 Services
 Specialist 4
 06-3018
 R20 CL
 Anchorage

Protective
 Services
 Specialist 4
 06-3125
 R20 CL
 Anchorage

Protective Services
 Specialist 2
 06-9279
 R17 CL
 Anchorage

Protective Services
 Specialist 2
 06-3425
 R17 CL
 Anchorage

Protective Services
 Specialist 2
 06-3712
 R17 CL
 Anchorage

Protective Services
 Specialist 1
 06-3216
 R15 CL
 Anchorage

Protective Services
 Specialist 2
 06-4543
 R17 CL
 Anchorage

Protective Services
 Specialist 2
 06-3431
 R17 CL
 Anchorage

Protective Services
 Specialist 2
 06-9155
 R17 CL
 Anchorage

Protective Services
 Specialist 2
 06-9267
 R17 CL
 Anchorage

Protective Services
 Specialist 1
 06-9282
 R15 CL
 Anchorage

Protective Services
 Specialist 2
 06-3931
 R17 CL
 Anchorage

Protective Services
 Specialist 2
 06-3432
 R17 CL
 Anchorage

Protective Services
 Specialist 2
 06-3929
 R17 CL
 Anchorage

Protective Services
 Specialist 2
 06-9370
 R17 CL
 Anchorage

Protective Services
 Specialist 1
 06-3869
 R15 CL
 Anchorage

Protective Services
 Specialist 2
 06-3409
 R17 CL
 Anchorage

Protective Services
 Specialist 1
 06-3076
 R17 CL
 Anchorage

Protective Services
 Specialist 1
 06-9390
 R15 CL
 Anchorage

Protective Services
 Specialist 2
 06-9366
 R17 CL
 Anchorage

Protective Services
 Specialist 1
 06-3100
 R15 CL
 Anchorage

Protective Services
 Specialist 2
 06-9381
 R17 CL
 Anchorage

Social Services
 Associate
 06-3390
 R12 CL
 Anchorage

Protective Services
 Specialist 2
 06-9335
 R17 CL
 Anchorage

Protective Services
 Specialist 2
 06-9270
 R17 CL
 Anchorage

Protective Services
 Specialist 1
 06-3098
 R15 CL
 Anchorage

Protective Services
 Specialist 2
 06-3417
 R17 CL
 Anchorage

Social Services
 Associate
 06-4622
 R12 CL
 Anchorage

Protective Services
 Manager 2
 06-4506
 R22 CL
 Anchorage

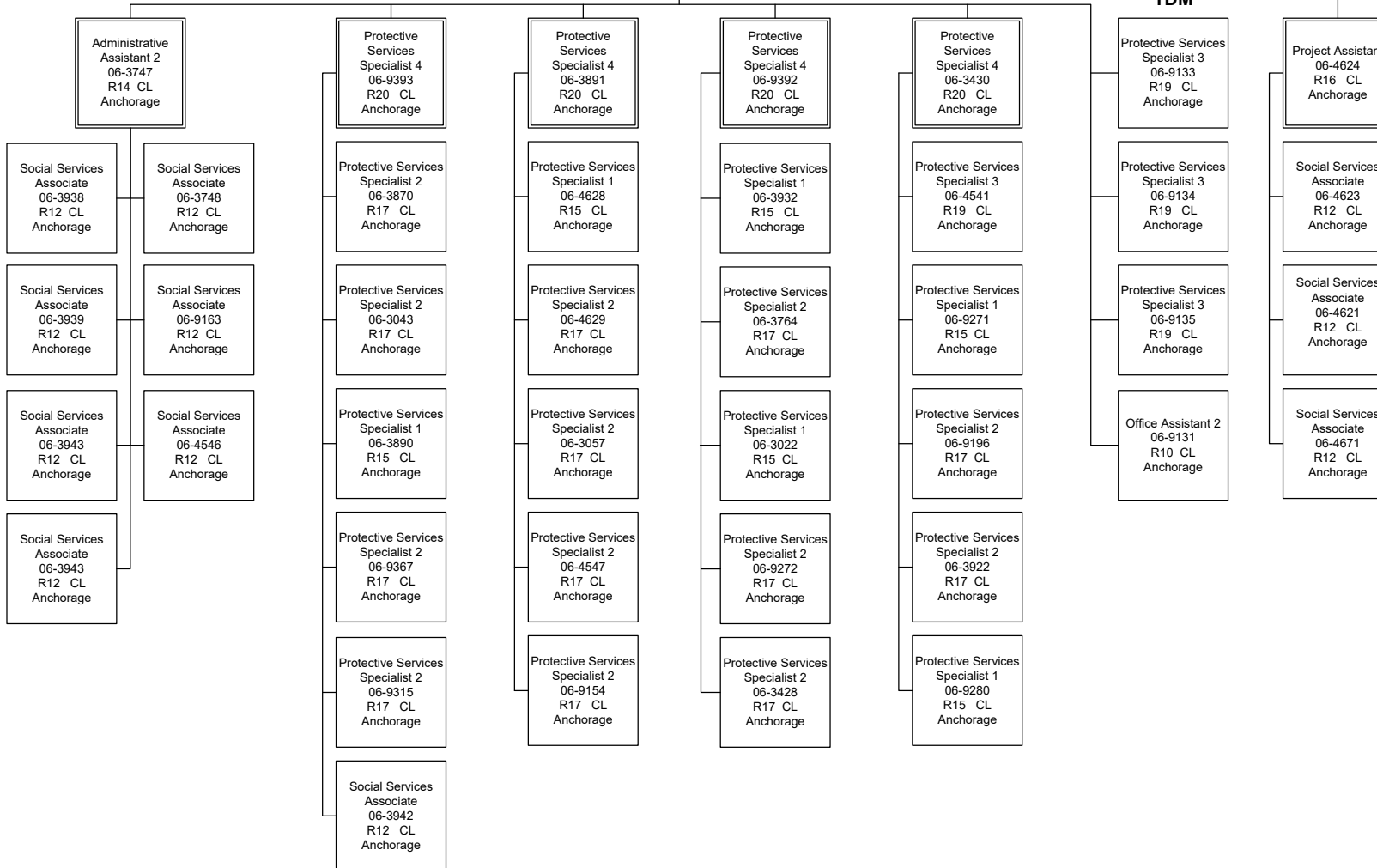
Protective Services
 Manager 1
 06-3878
 R21 CL
 Anchorage

FAMILY SERVICES

TDM

ASPIN UNIT

Protective Services
 Specialist 3
 06-4636
 R19 CL
 Juneau



Protective Services
 Manager 2
 06-4506
 R22 CL
 Anchorage

Protective Services
 Manager 1
 06-3085
 R21 CL
 Anchorage

INITIAL ASSESSMENTS



ORCA UNIT

Data Processing
 Manager 1
 06-9304
 R22 CL
 Anchorage

Social Services
 Program Coordinator
 06-9168
 R20 CL
 Anchorage

Protective Services
 Specialist 2
 06-3926
 R17 CL
 Anchorage

Protective Services
 Specialist 2
 06-3934
 R17 CL
 Anchorage

Social Services
 Program Coordinator
 06-9171
 R20 CL
 Anchorage

ET UNIT

Social Services
 Program Coordinator
 06-3075
 R20 CL
 Juneau

Eligibility
 Technician 4
 06-8104
 R17 CL
 Anchorage

Eligibility
 Technician 2
 06-4645
 R14 CL
 Anchorage

Eligibility
 Technician 2
 06-8149
 R14 CL
 Anchorage

Eligibility
 Technician 2
 06-3026
 R14 CL
 Anchorage

Eligibility
 Technician 2
 06-3187
 R14 CL
 Anchorage

Eligibility
 Technician 2
 06-9339
 R14 CL
 Anchorage

Social Services
 Program Administrator
 06-4502
 R23 CL
 Anchorage

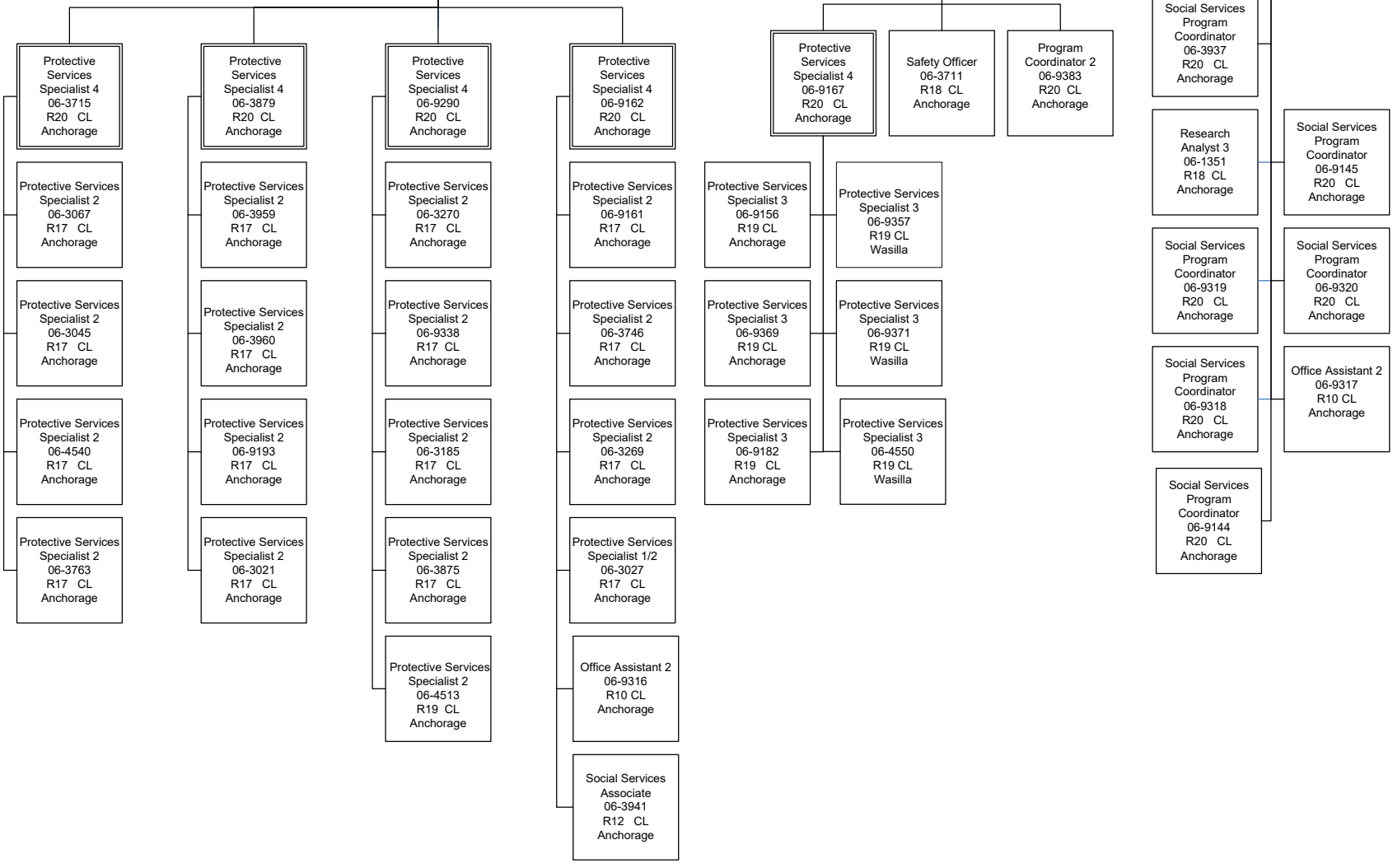
QUALITY ASSURANCE UNIT

CENTRALIZED INTAKE

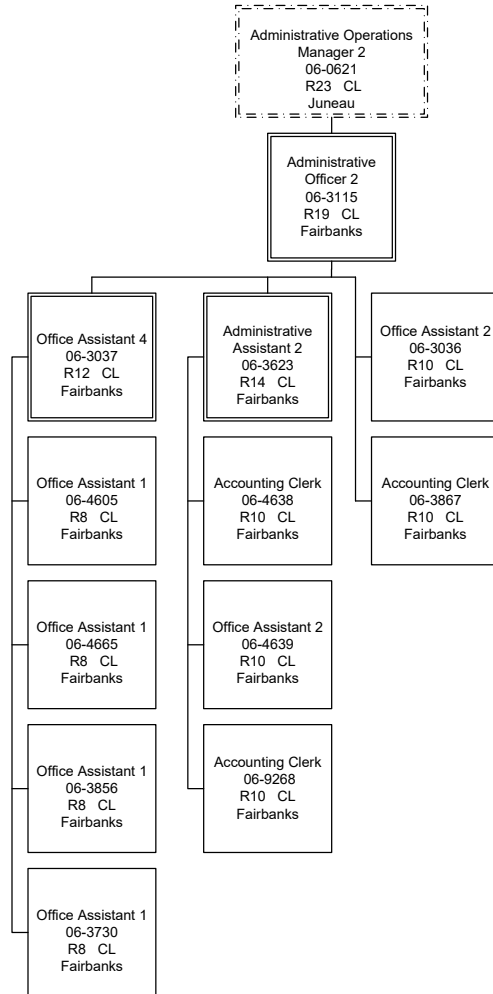
Protective Services
 Manager 1
 06-3792
 R21 CL
 Anchorage

**Mentor Team/
 Safety**

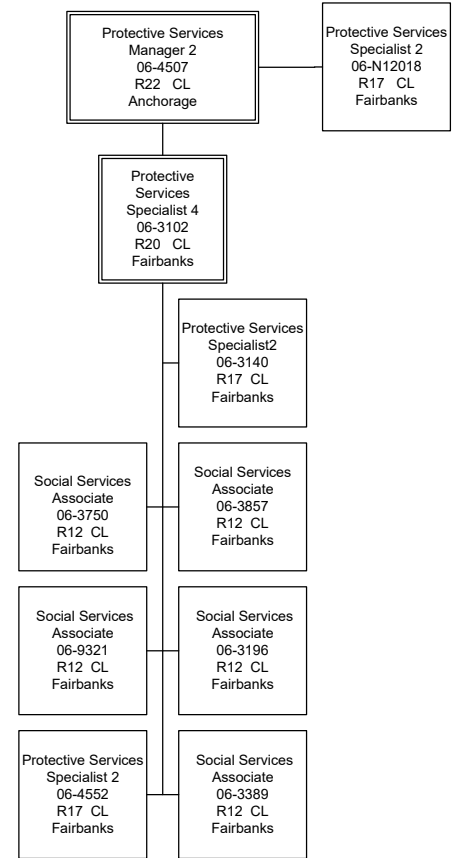
Social Services
 Program Officer
 06-3421
 R21 CL
 Anchorage



ADMIN UNIT



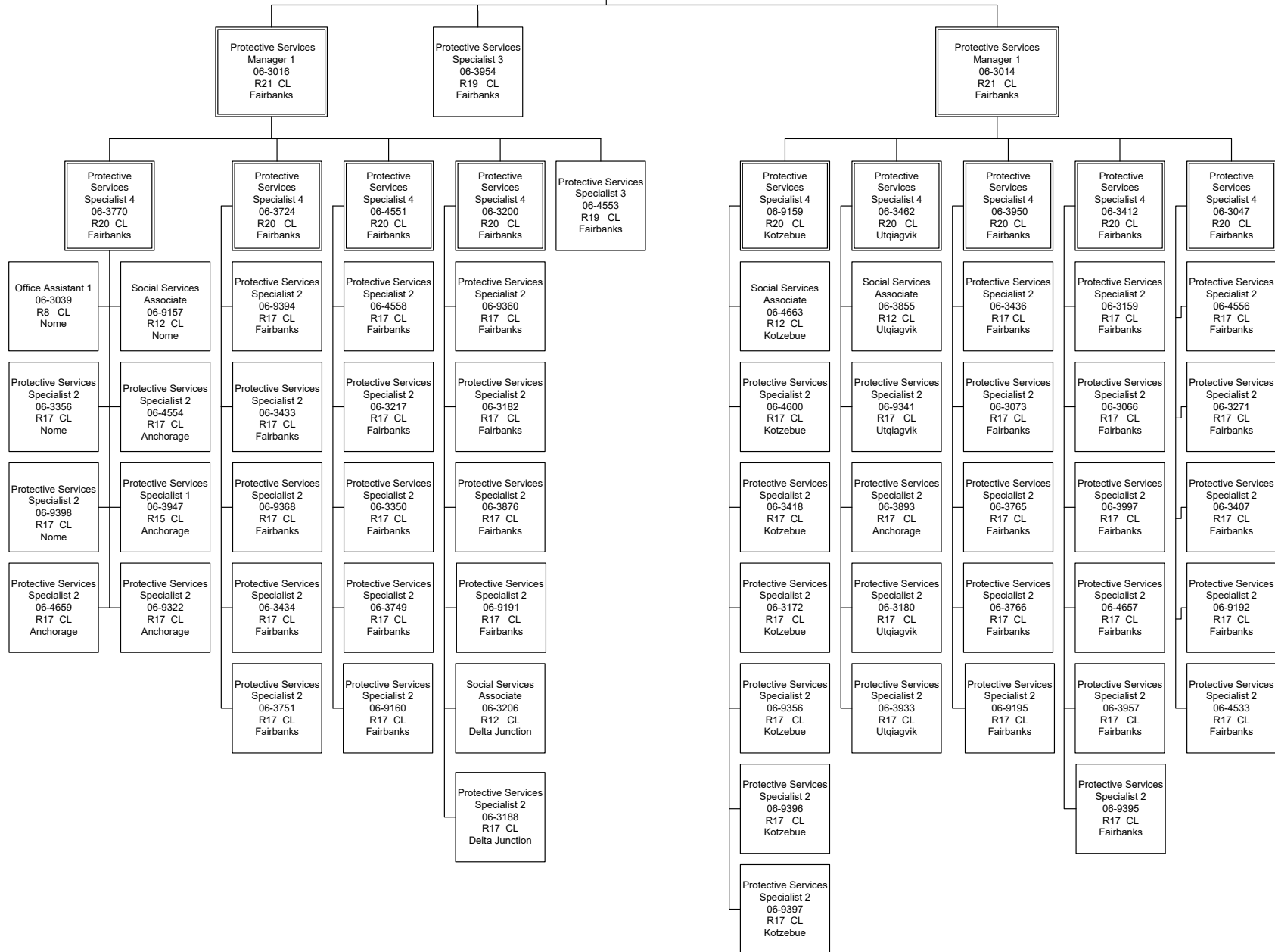
PERMANENCY



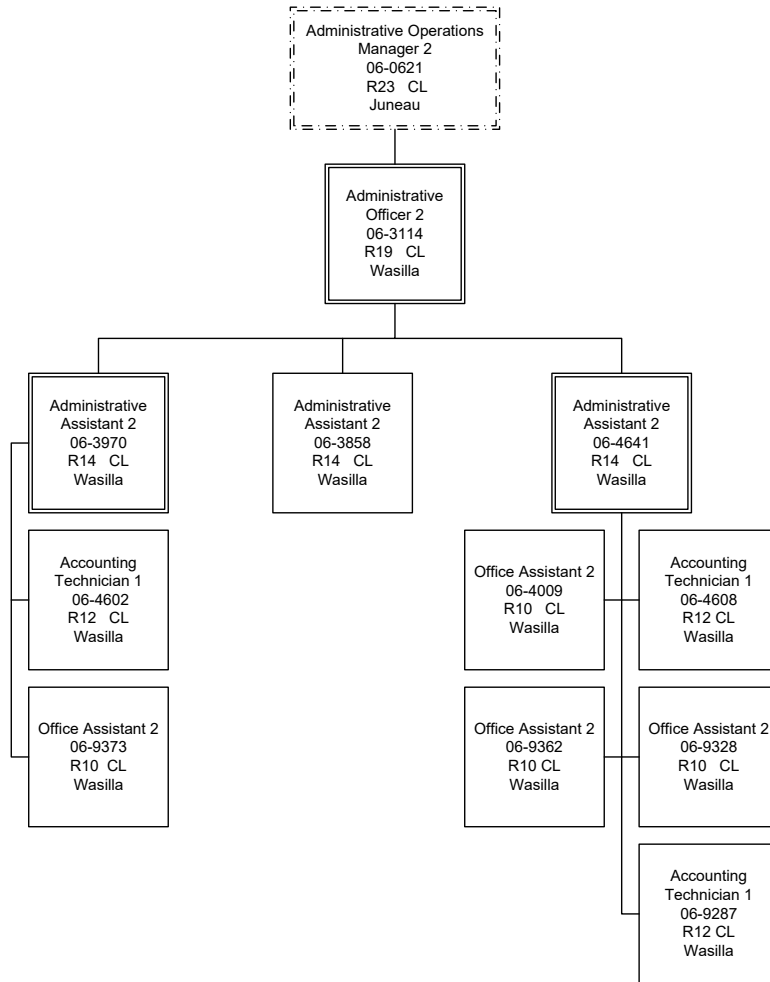
Protective Services
 Manager 2
 06-4507
 R22 CL
 Anchorage

INITIAL ASSESSMENTS

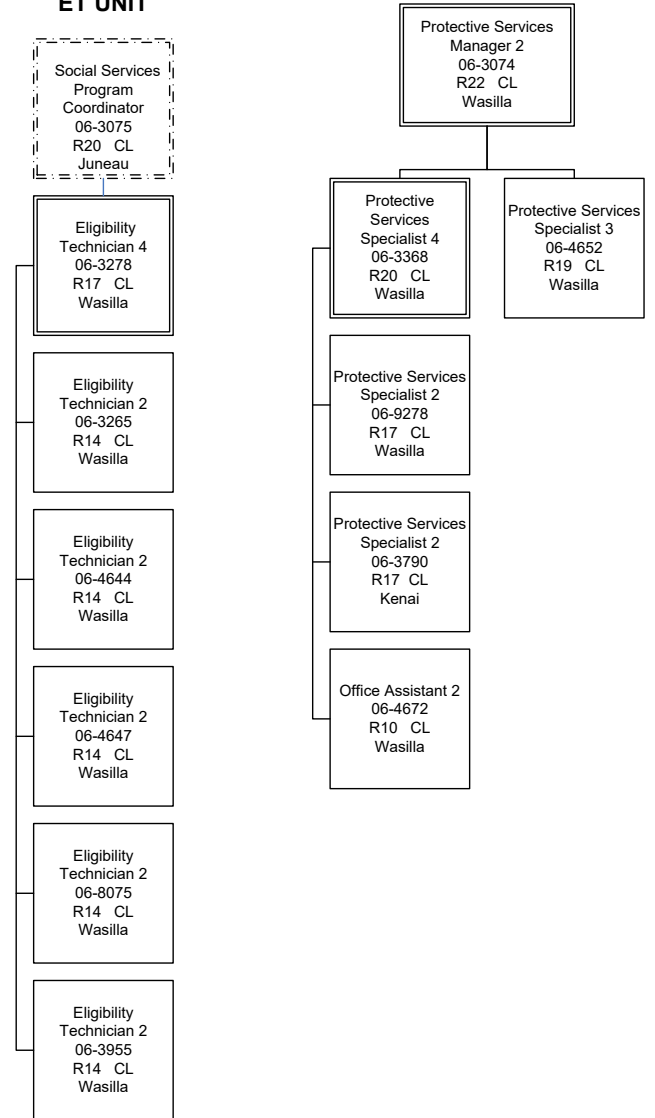
FAMILY SERVICES



ADMIN UNIT



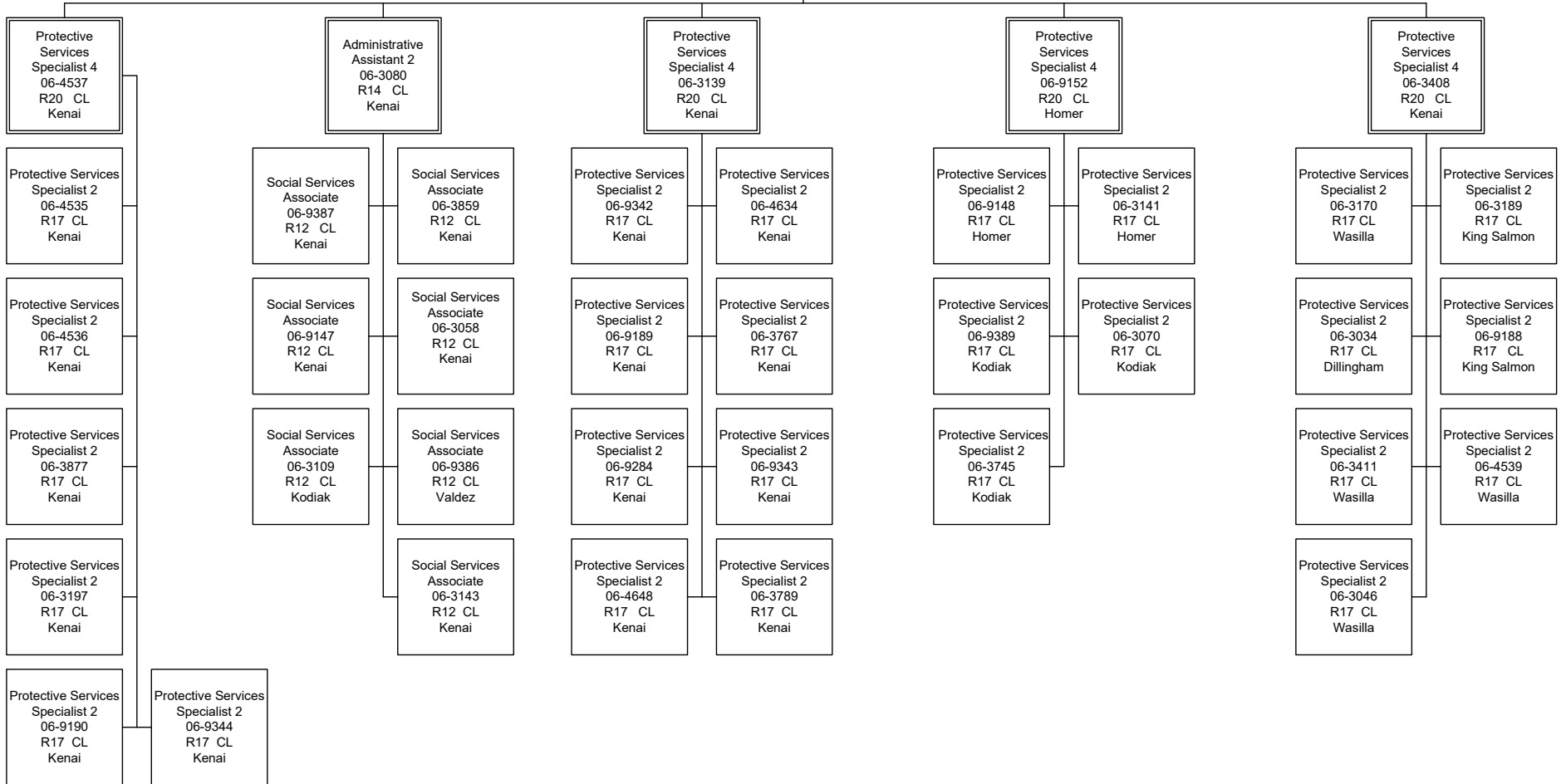
ET UNIT



Department of Family and Community Services
 Office of Children's Services
 Front Line Social Workers (2305)
 FY2023 Governor

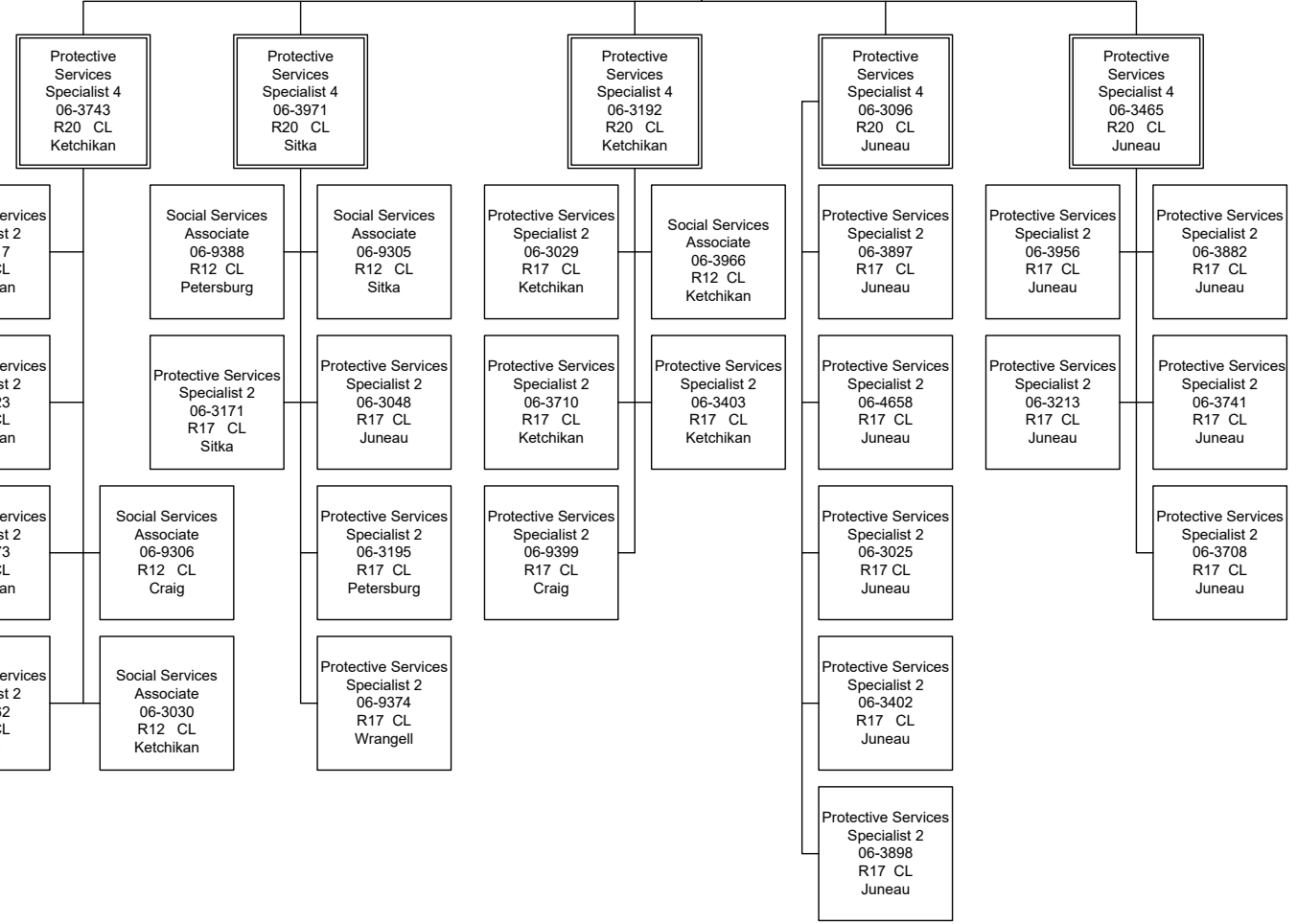
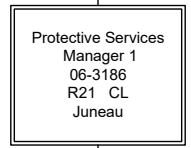
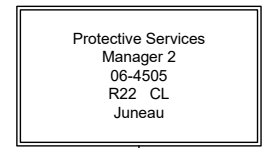
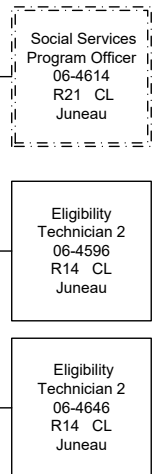
Protective Services
 Manager 2
 06-3074
 R22 CL
 Wasilla

Protective Services
 Manager 1
 06-9289
 R21 CL
 Kenai

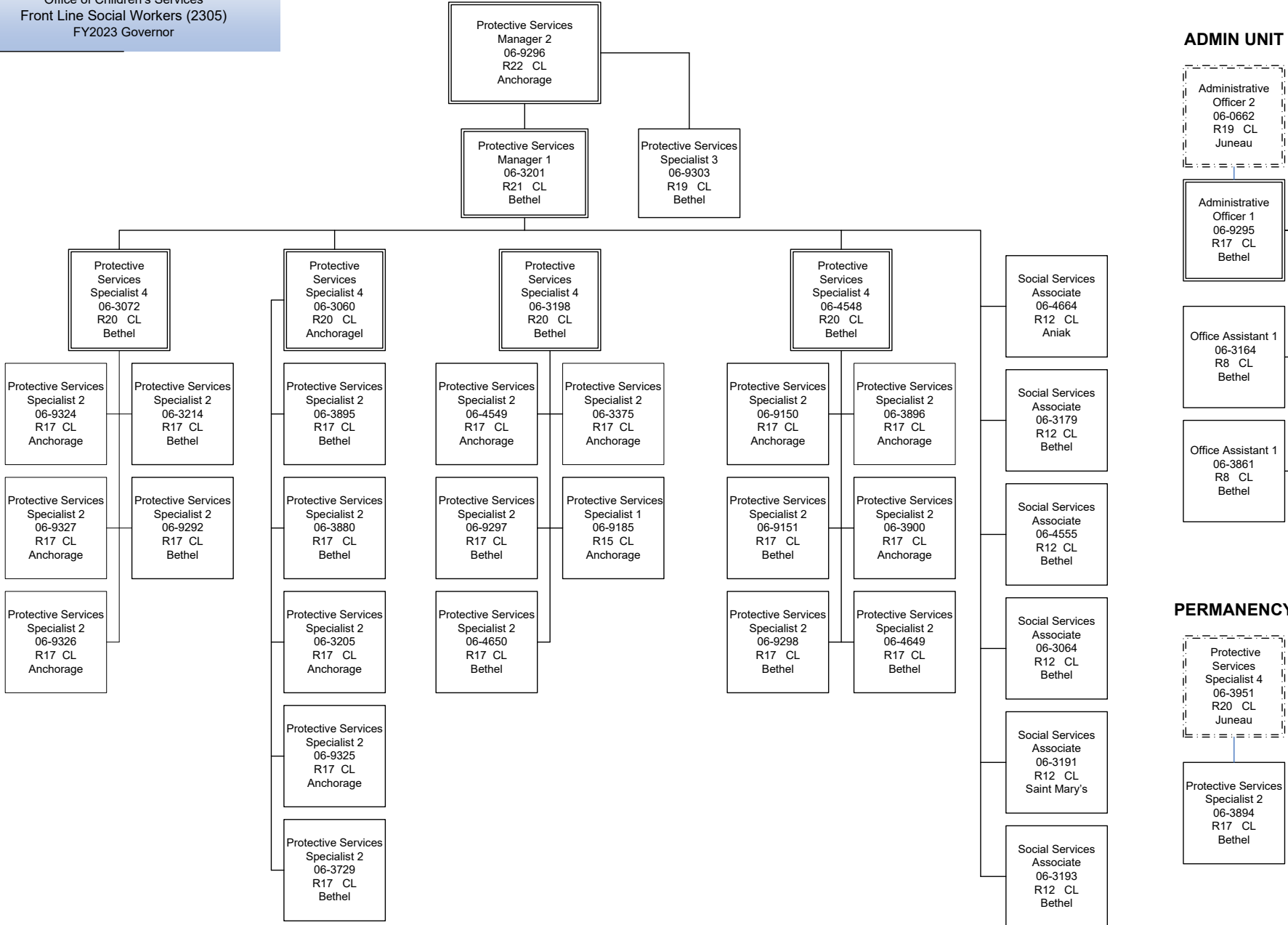


Department of Family and Community Services
 Office of Children's Services
 Front Line Social Workers (2305)
 FY2023 Governor

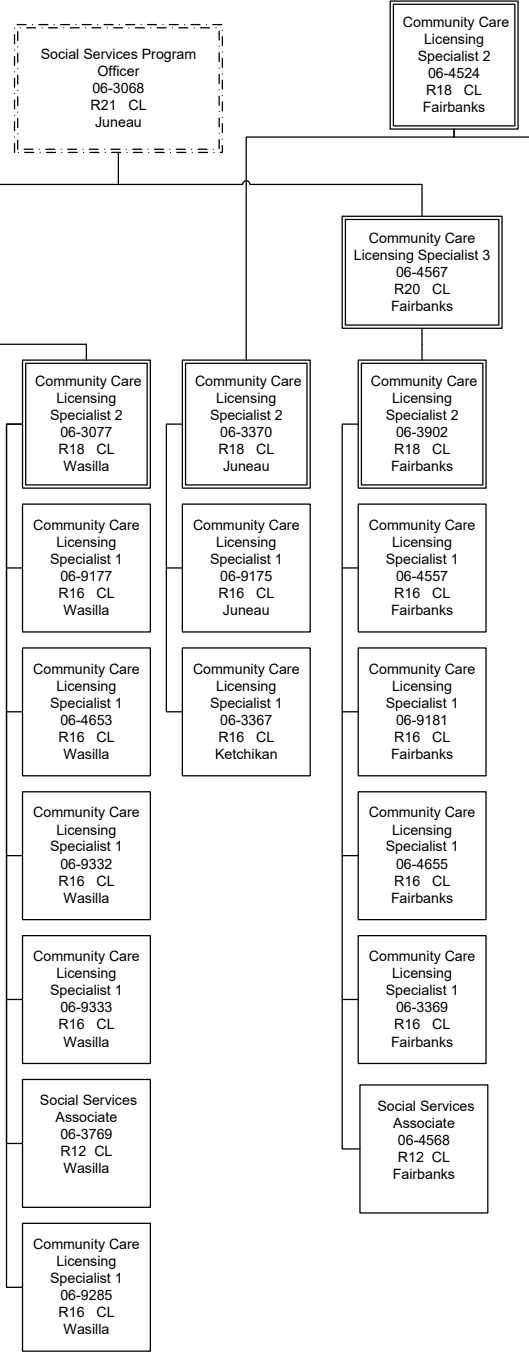
ADMIN UNIT



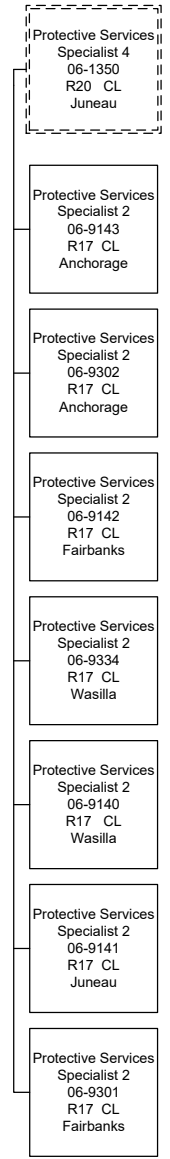
Department of Family and Community Services
 Office of Children's Services
 Front Line Social Workers (2305)
 FY2023 Governor



LICENSING UNIT



INDEPENDENT LIVING UNIT



NURSING UNIT

