

ALASKA PIONEER HOME
DIVISION DIRECTOR
02-7005 R27 PX
Juneau

Administrative Team
(See Page 2)

Clinical Team
(See Page 2)

Anchorage Pioneer Home
(See Page 3)

Alaska Veterans and Pioneers Home
(See Page 4)

Fairbanks Pioneer Home
(See Page 5)

Juneau Pioneer Home
(See Page 6)

Ketchikan Pioneer Home
(See Page 7)

Sitka Pioneer Home
(See Page 8)

Pioneer Home Pharmacy
(See Page 9)

PA/Advanced
 Practice RN 2
 02-7807 R24 CL
 Palmer

PIONEERS HOME
 ADMINISTRATOR
 027540 R23 PX

Assistant
 Administrator
 027314 R21 CL

Protective Svcs
 Specialist 1
 027928 R15 CL

Protective Svcs
 Specialist 3
 066209 R19 CL

Recreation
 Therapist 2
 027474 R16 CL

Maintenance
 Generalist Foreman
 027445 R52 CL

Administrative
 Assistant 3
 027430 R15

Nurse 3
 027417 R24 CL

Nurse 3
 027930 R24 CL

Nurse 3
 027362 R24 CL

Assisted Living
 Care Coordinator
 066203 R17 CL

Assisted Living
 Care Coordinator
 027418 R17 CL

Physical
 Therapist
 027408 R18

Staff Assigned
 As Required
 (See Below)

Recreation
 Assistant
 027475 R11 CL

Assisted
 Living Aide
 027545 R09 CL
 027559 R09 CL
 027560 R09 CL
 ALA/CNA 1

Maintenance
 Generalist Journey
 027446 R54 CL
 027447 R54 CL
 027453 R54 CL
 027562 R54 CL
 066231 R54 CL

Medical Information
 Services Assistant
 027597 R10 CL

Office Assistant 2
 027403 R10 CL

Assisted Living Aide
 027529 R09 CL
 ALA/CNA 1

Supply Technician 2
 027476 R12 CL

Staff Assigned
 As Required
 (See Below)

Staff Assigned
 As Required
 (See Below)

Staff Assigned
 As Required
 (See Below)

Staff Assigned
 As Required
 (See Below)

Staff Assigned
 As Required
 (See Below)

LPN/Nurse 1/2
Nurse 2
 027357 R22 CL
 027413 R22 CL
 027489 R22 CL
 027923 R22 CL
 066204 R22 CL
 066243 R22 CL
Nurse 1
 027541 R1 CL
LPN
 027415 R17 CL
 027416 R17 CL
 027420 R17 CL
 027543 R17 CL
 027546 R17 CL
 027547 R17 CL
 027576 R17 CL
 027577 R17 CL
 027581 R17 CL
 027921 R17 CL
 027922 R17 CL
 027955 R17 CL
 066194 R17 CL
 066222 R17 CL

Nurse 2
 027580 R22 CL
 066205 R22 CL
**Certified
 Nurse Aide 2**
 027435 R12 CL
 027421 R12 CL
 027425 R12 CL
 027554 R12 CL
 027586 R12 CL

**ALA/CNA 1
 Certified
 Nurse Aide 1**
 027139 R11 CL
 027165 R11 CL
 027214 R11 CL
 027302 R11 CL
 027405 R11 CL
 027411 R11 CL
 027419 R11 CL
 027422 R11 CL
 027423 R11 CL
 027424 R11 CL

**ALA/CNA 1 cont.
 Certified
 Nurse Aide 1**
 027427 R11 CL
 027428 R11 CL
 027429 R11 CL
 027431 R11 CL
 027432 R11 CL
 027433 R11 CL
 027434 R11 CL
 027436 R11 CL
 027437 R11 CL
 027438 R11 CL
 027439 R11 CL
 027443 R11 CL
 027452 R11 CL
 027455 R11 CL
 027456 R11 CL
 027462 R11 CL
 027463 R11 CL
 027464 R11 CL
 027467 R11 CL
 027470 R11 CL
 027477 R11 CL
 027478 R11 CL
 027484 R11 CL

**ALA/CNA 1 cont.
 Certified
 Nurse Aide 1**
 027486 R11 CL
 027487 R11 CL
 027488 R11 CL
 027496 R11 CL
 027499 R11 CL
 027542 R11 CL
 027548 R11 CL
 027549 R11 CL
 027550 R11 CL
 027551 R11 CL
 027552 R11 CL
 027553 R11 CL
 027555 R11 CL
 027556 R11 CL
 027557 R11 CL
 027573 R11 CL
 027579 R11 CL
 027582 R11 CL
 027583 R11 CL
 027584 R11 CL
 027585 R11 CL
 027587 R11 CL
 027588 R11 CL

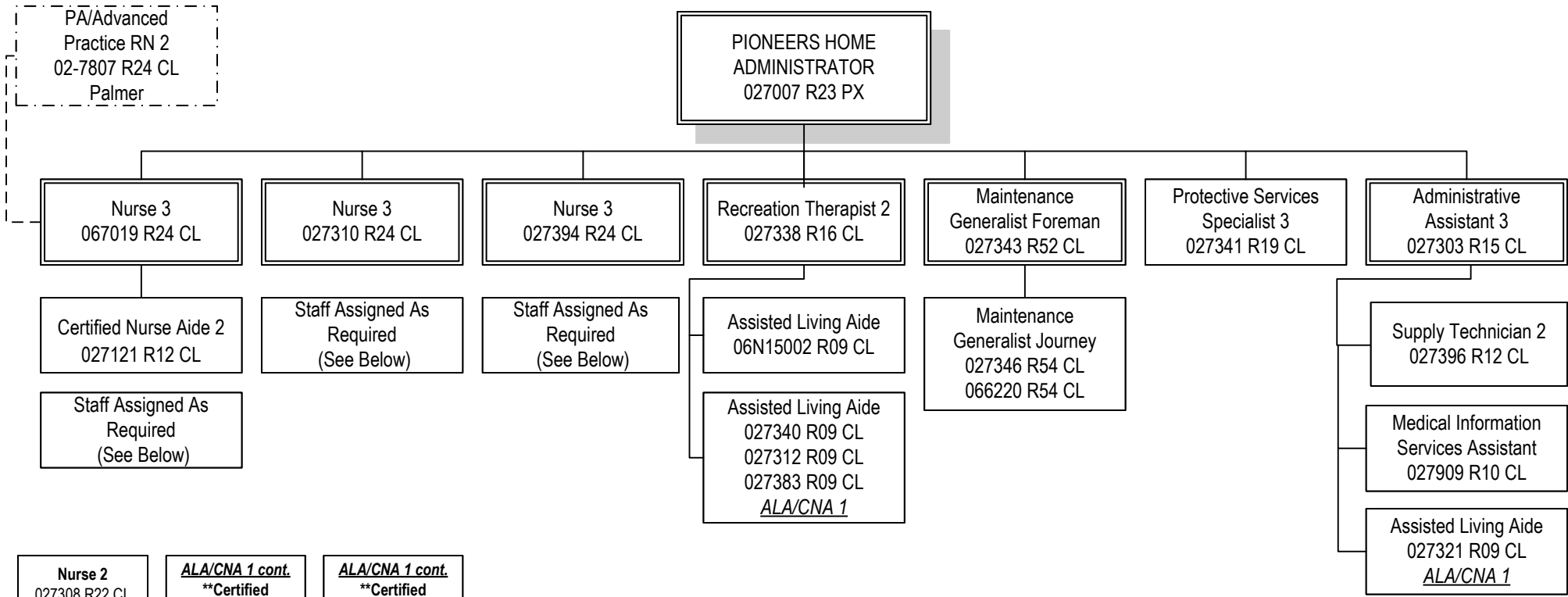
**ALA/CNA 1 cont.
 Certified
 Nurse Aide 1**
 027589 R11 CL
 027590 R11 CL
 027591 R11 CL
 027592 R11 CL
 027593 R11 CL
 027594 R11 CL
 027614 R11 CL
 027632 R11 CL
 027835 R11 CL
 027840 R11 CL
 027919 R11 CL
 027924 R11 CL
 027925 R11 CL
 027953 R11 CL
 027956 R11 CL
 066079 R11 CL
 066120 R11 CL
 066129 R11 CL
 066161 R11 CL
 066200 R11 CL
 066201 R11 CL
 066207 R11 CL
 066224 R11 CL

On-Call LPN
 06N09021 R17 CL

**On-Call Certified
 Nurse Aide 1**
 06N09020 R11 CL

**On-Call Assisted
 Living Aide**
 06N21293 R09 CL

Bed Count: 168
 All positions located in Anchorage unless otherwise noted



Nurse 2
027308 R22 CL

LPN/NURSE 1/2
Nurse 2
 027342 R22 CL
 027369 R22 CL
 027390 R22 CL
 027824 R22 CL
 027958 R22 CL
 066211 R22 CL
 066212 R22 CL
LPN
 027306 R17 CL
 027318 R17 CL
 027397 R17 CL

ALA/CNA 1
****Assisted Living Aide**
 027336 R09 CL

ALA/CNA 1 cont.
****Certified Nurse Aide 1**
 027304 R11 CL
 027305 R11 CL
 027307 R11 CL
 027309 R11 CL
 027313 R11 CL
 027317 R11 CL
 027319 R11 CL
 027320 R11 CL
 027322 R11 CL
 027323 R11 CL
 027325 R11 CL
 027326 R11 CL
 027327 R11 CL
 027328 R11 CL
 027329 R11 CL
 027330 R11 CL
 027332 R11 CL
 027333 R11 CL
 027334 R11 CL
 027335 R11 CL

ALA/CNA 1 cont.
****Certified Nurse Aide 1**
 027339 R11 CL
 027350 R11 CL
 027351 R11 CL
 027352 R11 CL
 027356 R11 CL
 027359 R11 CL
 027375 R11 CL
 027391 R11 CL
 027392 R11 CL
 027393 R11 CL
 027398 R11 CL
 027399 R11 CL
 027907 R11 CL
 027908 R11 CL
 027918 R11 CL
 066213 R11 CL
 066214 R11 CL
 066235 R11 CL
 066236 R11 CL
 066237 R11 CL

On-Call Nurse 1
06N22018 R21 CL

On-Call Nurse 2
06N09086 R22 CL

On-Call LPN
06N15001 R17 CL

****On-Call Certified Nurse Aide 1**
06N09087 R11 CL

Bed Count: 79
 All positions located in Palmer unless otherwise noted
 ** Positions Lead by CNA II

FY2023 Governor's Budget
 Department of Family & Community Services
 3323 - Alaska Pioneer Homes
 Fairbanks Pioneer Home

PA/Advanced
 Practice RN 2
 02-7807 R24 CL
 Palmer

PIONEERS HOME
 ADMINISTRATOR
 027200 R23 PX

Assistant Administrator
 027946 R21 CL

Maintenance
 Generalist Foreman
 027251 R52 CL

Protective Services
 Specialist 3
 027226 R19 CL

Administrative
 Assistant 3
 027202 R15 CL

Nurse 3
 027213 R24 CL

Certified Nurse Aide 2
 027137 R12 CL
 066192 R12 CL
 066196 R12 CL

Staff Assigned As Required
 (See Below)

Maintenance
 Generalist Journey
 027256 R54 CL
 027265 R54 CL
 027290 R54 CL

Protective Services
 Specialist 1
 027207 R15 CL

Supply Technician 2
 027204 R12 CL

Staff Assigned As Required
 (See Below)

Staff Assigned As Required
 (See Below)

Assisted Living Aide
 027247 R09 CL
 027941 R09 CL
 ALA/CNA 1

Medical Information
 Services Assistant
 027284 R10 CL

LPN/Nurse 1/2
Nurse 2
 027211 R22 CL
 027212 R22 CL
 027216 R22 CL
 027218 R22 CL
 027223 R22 CL
 027227 R22 CL
 027245 R22 CL
LPN
 027217 R17 CL
 027221 R17 CL
 027228 R17 CL

ALA/CNA 1 cont
Certified
Nurse Aide 1
 027109 R11 CL
 027126 R11 CL
 027201 R11 CL
 027203 R11 CL
 027205 R11 CL
 027209 R11 CL
 027210 R11 CL
 027215 R11 CL
 027219 R11 CL
 027222 R11 CL
 027224 R11 CL
 027225 R11 CL
 027229 R11 CL
 027230 R11 CL
 027231 R11 CL
 027234 R11 CL
 027235 R11 CL
 027237 R11 CL
 027236 R11 CL
 027238 R11 CL

ALA/CNA 1 cont
Certified
Nurse Aide 1
 027240 R11 CL
 027241 R11 CL
 027246 R11 CL
 027249 R11 CL
 027252 R11 CL
 027270 R11 CL
 027276 R11 CL
 027298 R11 CL
 027932 R11 CL
 027933 R11 CL
 027935 R11 CL
 027936 R11 CL
 027937 R11 CL
 066040 R11 CL
 066195 R11 CL
 066199 R11 CL
 066147 R11 CL
 066241 R11 CL
 066242 R11 CL

On-Call Nurse 2
 06N09045 R22 CL

On-call LPN
 06N09044 R17 CL

**On-Call Certified
 Nurse Aide 1**
 06N09043 R11 CL

**On-Call Assisted
 Living Aide**
 06N21295 R09 CL

ALA/CNA 1
**Assisted
 Living Aide**
 027208 R09 CL
 027220 R09 CL
 027233 R09 CL
 027931 R09 CL

Bed Count: 91
 All positions located in Fairbanks unless otherwise noted

FY2023 Governor's Budget
 Department of Family & Community Services
 3323 - Alaska Pioneer Homes
 Juneau Pioneer Home

PA/Advanced
 Practice RN 2
 02-7807 R24 CL
 Palmer

PIONEERS HOME
 ADMINISTRATOR
 027800 R23 PX

Assistant Administrator
 027839 R21 CL

Assisted Living
 Care Coordinator
 027819 R17 CL

Protective Services
 Specialist 3
 027805 R19 CL

Recreation Therapist 2
 027812 R16 CL

Maintenance
 Generalist Foreman
 027804 R52 CL

Administrative
 Assistant 3
 027806 R15 CL

Nurse 3
 027818 R24 CL

Nurse 3
 027816 R24 CL

Staff Assigned As
 Required
 (See Below)

Staff Assigned As
 Required
 (See Below)

Assisted Living Aide
 027016 R09 CL
 027802 R09 CL
 066190 R09 CL
 ALA/CNA 1

Maintenance
 Generalist Journey
 027810 R54 CL

Administrative
 Assistant 1
 027838 R12 CL

Staff Assigned As
 Required
 (See Below)

Staff Assigned As
 Required
 (See Below)

LPN/Nurse 1/2
 LPN
 027820 R17 CL
 027823 R17 CL
 066188 R17 CL
 066232 R17 CL

LPN
 027817 R17 CL

ALA/CNA 1
 Certified
 Nurse Aide 1
 027244 R11 CL
 027801 R11 CL
 027803 R11 CL
 027814 R11 CL
 027815 R11 CL
 027821 R11 CL
 027826 R11 CL
 027827 R11 CL
 027828 R11 CL
 027829 R11 CL
 027830 R11 CL
 027831 R11 CL
 027832 R11 CL
 027833 R11 CL
 027834 R11 CL

ALA/CNA 1 cont.
 Certified
 Nurse Aide 1
 027841 R11 CL
 027842 R11 CL
 027843 R11 CL
 027904 R11 CL
 066189 R11 CL
 066223 R11 CL
 066225 R11 CL
 027825 R11 CL

**Assisted
 Living Aide**
 027813 R09 CL
 027822 R09 CL
 027836 R09 CL

On-Call Nurse 3
 06N20007 R24 CL

On-Call Nurse 1
 06N20006 R21 CL

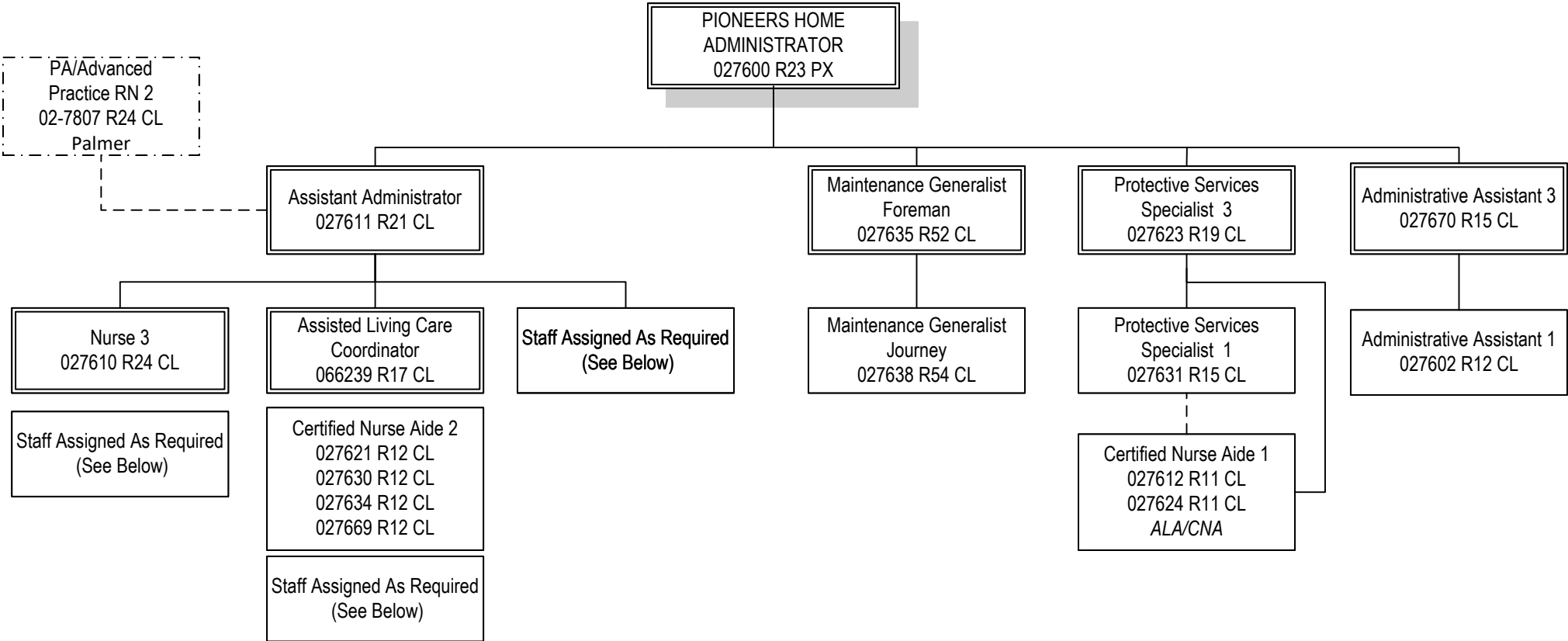
On-Call LPN
 06N20005 R17 CL

**On-Call Certified
 Nurse Aide 1**
 06N09018 R11 CL

**On-Call Assisted
 Living Aide**
 06N18007 R09 CL

Bed Count: 49
 All positions located in Juneau unless otherwise noted

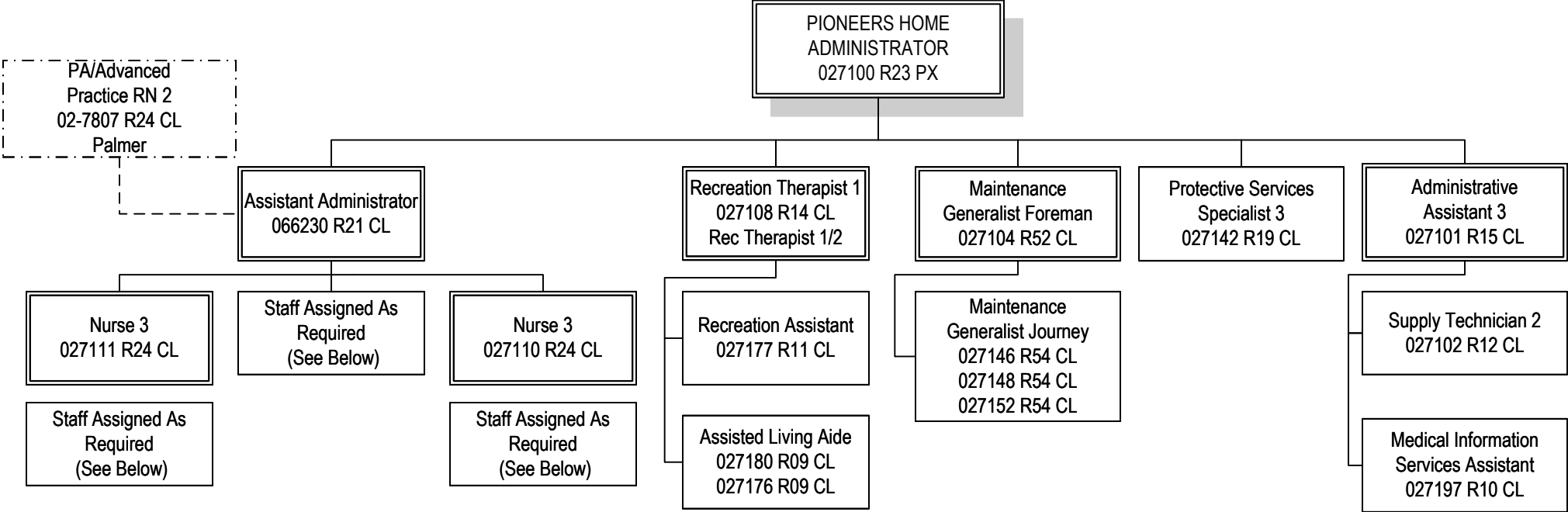
FY2023 Governor's Budget
 Department of Family & Community Services
 3323 - Alaska Pioneer Homes
 Ketchikan Pioneer Home



- | | | | | | | | |
|---|---|--|---|---|---------------------------------------|--|--|
| Nurse 1/2
Nurse 2
066240 R22 CL | ALA/CNA 1
Certified
Nurse Aide 1
027119 R11 CL
027170 R11 CL
027601 R11CL
027603 R11 CL
027606 R11 CL
027608 R11 CL
027609 R11 CL
027613 R11 CL
027615 R11 CL
027616 R11 CL
027617 R11 CL
027618 R11 CL
027619 R11 CL | ALA/CNA 1 cont.
Certified
Nurse Aide 1
027620 R11 CL
027633 R11 CL
027648 R11 CL
027671 R11 CL
027943 R11 CL
027945 R11 CL
066206 R11 CL
066238 R11 CL
069504 R11 CL | On-Call Nurse 2
06N09005 R22 CL | On-Call Nurse 1
06N09004 R21 CL | On-Call LPN
06N09003 R17 CL | On-Call Certified Nurse Aide 1
06N09002 R11 CL | On-Call Assisted Living Aide
06N18029 R09 CL |
| LPN/Nurse 1/2
Nurse 2
027605 R22 CL
027607 R22 CL | Assisted Living Aide
027944 R09 CL | | | | | | |

Bed Count: 45
 All positions located in Ketchikan unless otherwise noted

FY2023 Governor's Budget
 Department of Family & Community Services
 3323- Alaska Pioneer Homes
 Sitka Pioneer Home



LPN/Nurse 1/2
Nurse 2
 027106 R22 CL
 027112 R22 CL
 027114 R22 CL
 027118 R22 CL
 066226 R22 CL

Certified Nurse Aide 2
 027105 R12 CL

Assisted Living Aide (non-M.C.)
 027951 R09 CL

ALA / CNA 1 Certified
Nurse Aide 1
 027120 R11 CL
 027122 R11 CL
 027124 R11 CL
 027125 R11 CL
 027127 R11 CL
 027128 R11 CL
 027129 R11 CL
 027130 R11 CL
 027131 R11 CL
 027132 R11 CL
 027133 R11 CL
 027134 R11 CL
 027135 R11 CL
 027136 R11 CL
 027138 R11 CL
 027140 R11 CL
 027141 R11 CL
 027143 R11 CL

ALA/CNA 1 cont. Certified
Nurse Aide 1
 027144 R11 CL
 027159 R11 CL
 027164 R11 CL
 027178 R11 CL
 027901 R11 CL
 027903 R11 CL
 027905 R11 CL
 027912 R11 CL
 027913 R11 CL
 027949 R11 CL
 027950 R11 CL
 066210 R11 CL
 066228 R11 CL

Assisted Living Aide
 027934 R09 CL
 066217 R09 CL

On-Call Nurse 2
 06N09033 R22 CL

On-Call LPN
 06N21383 R17 CL

CNA 1
 06N09031 R11 CL

ALA
 06N21294 R09 CL

Bed Count: 65
 All positions located in Sitka unless otherwise noted

FY2023 Governor's Budget
Department of Family & Community Services
3323 - Alaska Pioneer Homes
Pioneer Home Pharmacy

Pharmacist
Lead
06X114 R27 CL

Pharmacist
06X113 R27 CL

Accounting Tech. 3
027574 R16 CL

Pharmacy Technician
027480 R12 CL
027917 R12 CL
066208 R12 CL