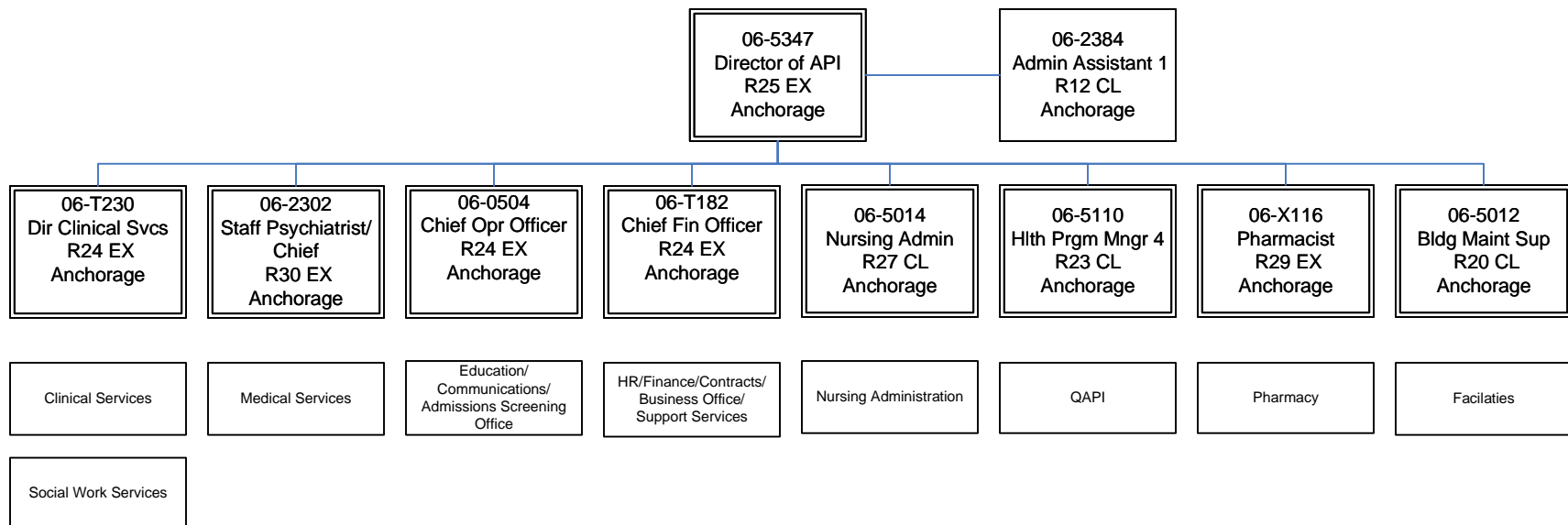
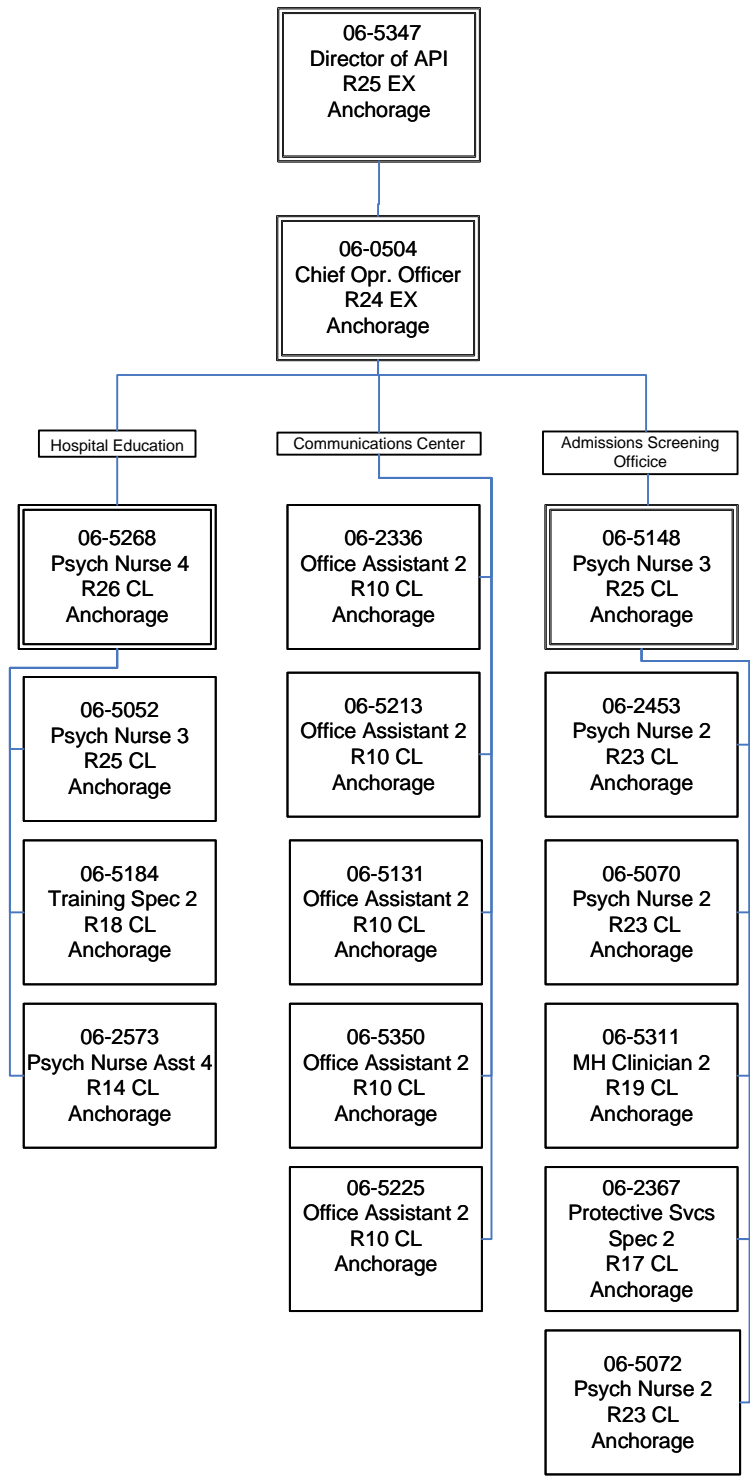


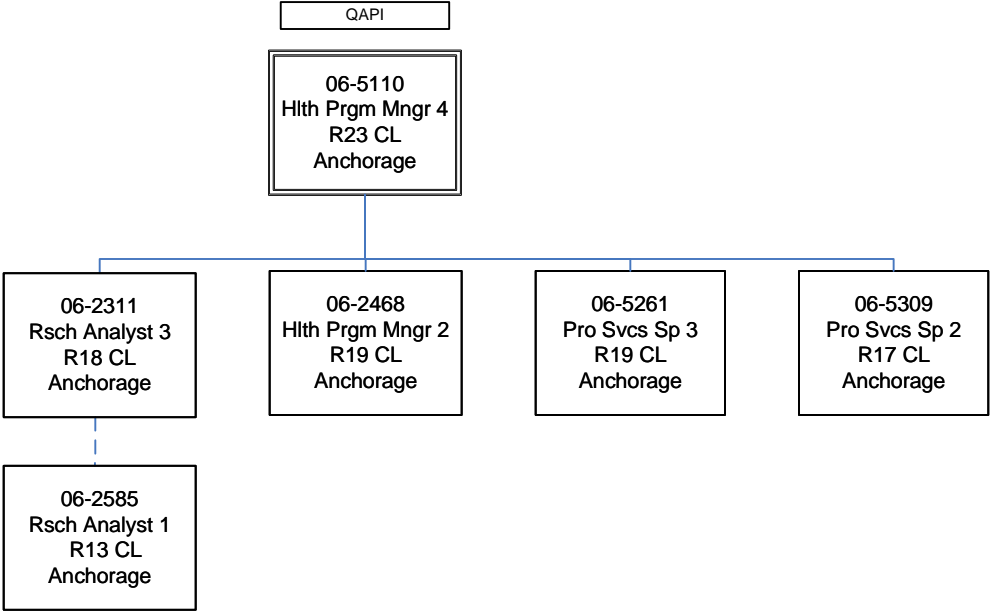
FY2023 Governor's Budget
 Department of Family & Community Services
 3311 - Alaska Psychiatric Institute
 Executive Team



FY2023 Governor's Budget
Department of Family & Community Services
3311 - Alaska Psychiatric Institute
Education/Comm Center/ ASO



FY2023 Governor's Budget
Department of Family & Community Services
3311 - Alaska Psychiatric Institute
QAPI/Recovery Support/P&P



FY2023 Governor's Budget
Department of Family & Community Services
3311 - Alaska Psychiatric Institute
HR/Finance/Contracts/Business Office/ Support Services

06-5347
Director of API
R25 EX
Anchorage

06-T182
Chief Fin Officer
R24 EX
Anchorage

Business Office

Human Resources

06-2574
HR Consultant 3
R19 CL
Anchorage

06-2335
Admin Officer 1
R17 CL
Anchorage

06-5354
HR Technician 2
R14 CL
Anchorage

06-5124
Admin Assistant 1
R12 CL
Anchorage

06-5173
Office Assistant 2
R10 CL
Anchorage

06-5264
Admin Assistant 1
R12 CL
Anchorage

Finance/Cost Reporting
Supply

06-2426
Admin Officer 1
R17 CL
Anchorage

06-5164
Admin Assistant 3
R15 CL
Anchorage

06-5037
Acct Technician 3
R16 CL
Anchorage

06-2220
Acct Technician 1
R12 CL
Anchorage

06-0482
Supply Tech 2
R12 CL
Anchorage

06-5093
Supply Technician
1
R10 CL
Anchorage

Claims/Billing

06-0669
Accountant 3
R18 CL
Anchorage

06-2274
Acct Technician 2
R14 CL
Anchorage

06-2290
Acct Technician 1
R12 CL
Anchorage

06-5102
Acct Technician 1
R12 CL
Anchorage

06-2324
Acct Clerk
R10 CL
Anchorage

HIMS

06-5040
Med Record Admin
R17 CL
Anchorage

06-2391
Med Info/Svc Asst
R10 CL
Anchorage

06-5104
Med Info and Svc
Asst
R10 CL
Anchorage

Electronic Health
Record/Informatics

06-5374
Psych Nurse 3
R25 CL
Anchorage

06-5248
Psych Nurse 3
R25 CL
Anchorage

06-2563
Project Assistant
R16 CL
Anchorage

FY2023 Governor's Budget
Department of Family & Community Services
3311 - Alaska Psychiatric Institute
Facilities

06-5347
Director of API
R25 EX
Anchorage

Facilities

06-5012
Blding Maint Supr.
R20 CL
Anchorage

06-2480
Office Assistant 2
R10 CL
Anchorage

Building Maintenance

Environmental Services

06-5312
Maint BFC Jrny 2
R51 CL
Anchorage

06-5214
Env Svcs Lead
R58 CL
Anchorage

06-2308
Maint Gen Sub 1
R58 CL
Anchorage

06-5047
Maint Plumb Jrny 1
R54 CL
Anchorage

06-2558
Maint Gen Jrny
R54 CL
Anchorage

06-5206
Env Svcs Jrny 1
R61 CL
Anchorage

06-5222
Env Svcs Jrny 1
R61 CL
Anchorage

06-5216
Env Svcs Jrny 1
R61 CL
Anchorage

06-5035
Maint Gen Jrny
R54 CL
Anchorage

06-5064
Maint Gen Sub 2
R56 CL
Anchorage

06-2559
Maint Gen Jrny
R54 CL
Anchorage

06-5203
Env Svcs Jrny 1
R61 CL
Anchorage

06-5204
Env Svcs Jrny 1
R61 CL
Anchorage

06-5167
Env Svcs Jrny 2
R60 CL
Anchorage

06-5168
Env Svcs Jrny 2
R60 CL
Anchorage

06-5364
Env Svcs Jrny 2
R60 CL
Anchorage

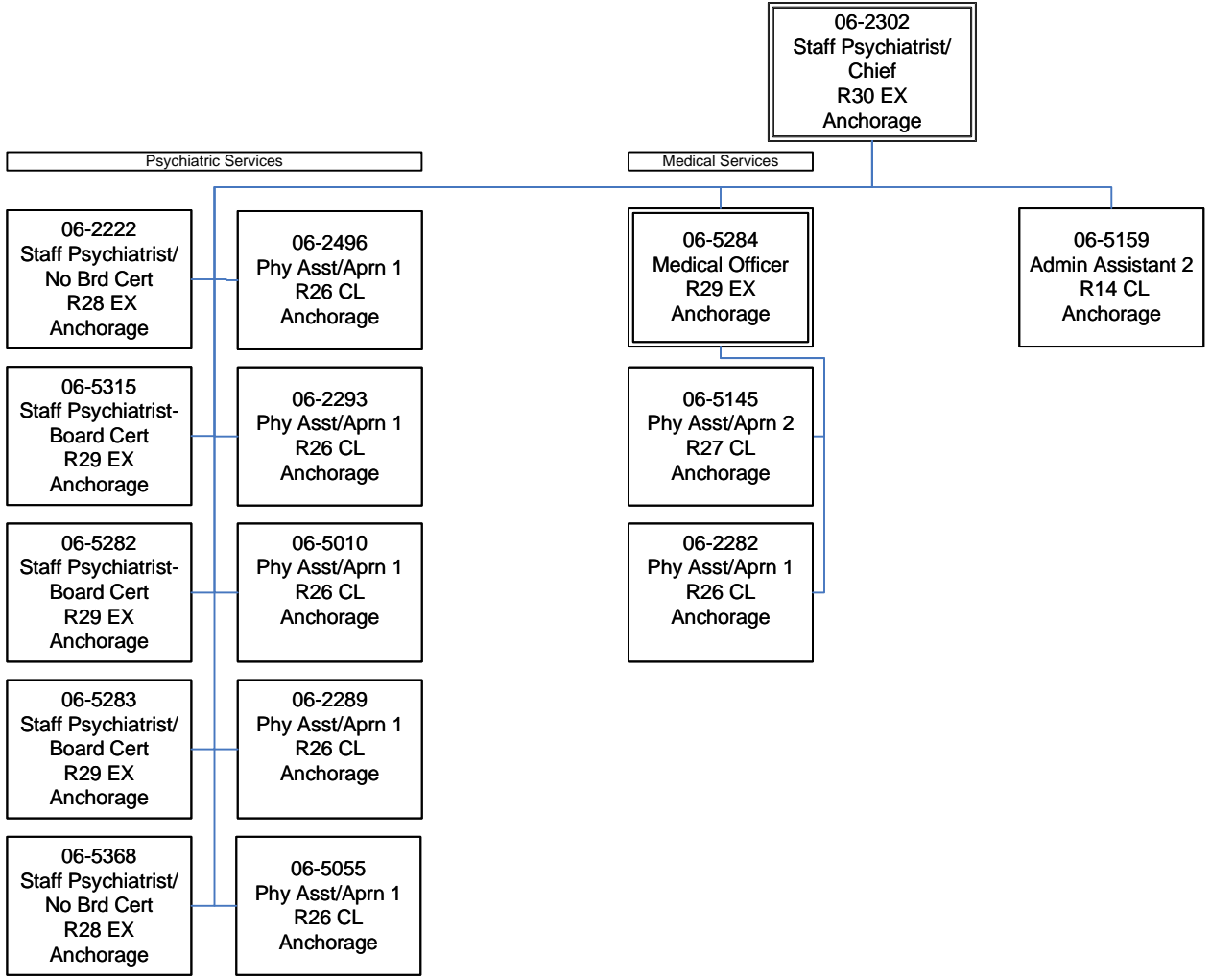
06-5217
Env Svcs Jrny 2
R60 CL
Anchorage

06-2479
Env Svcs Jrny 2
R60 CL
Anchorage

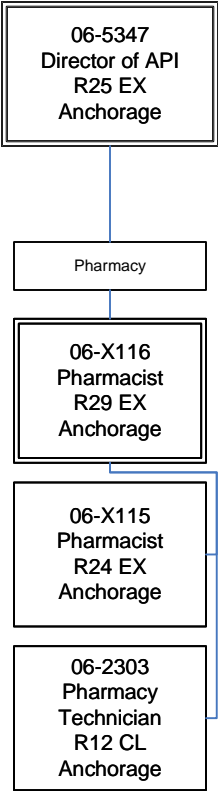
06-5215
Env Svcs Jrny 2
R60 CL
Anchorage

06-5202
Env Svcs Jrny 2
R60 CL
Anchorage

FY2023 Governor's Budget
 Department of Family & Community Services
 3311 - Alaska Psychiatric Institute
 Medical Services

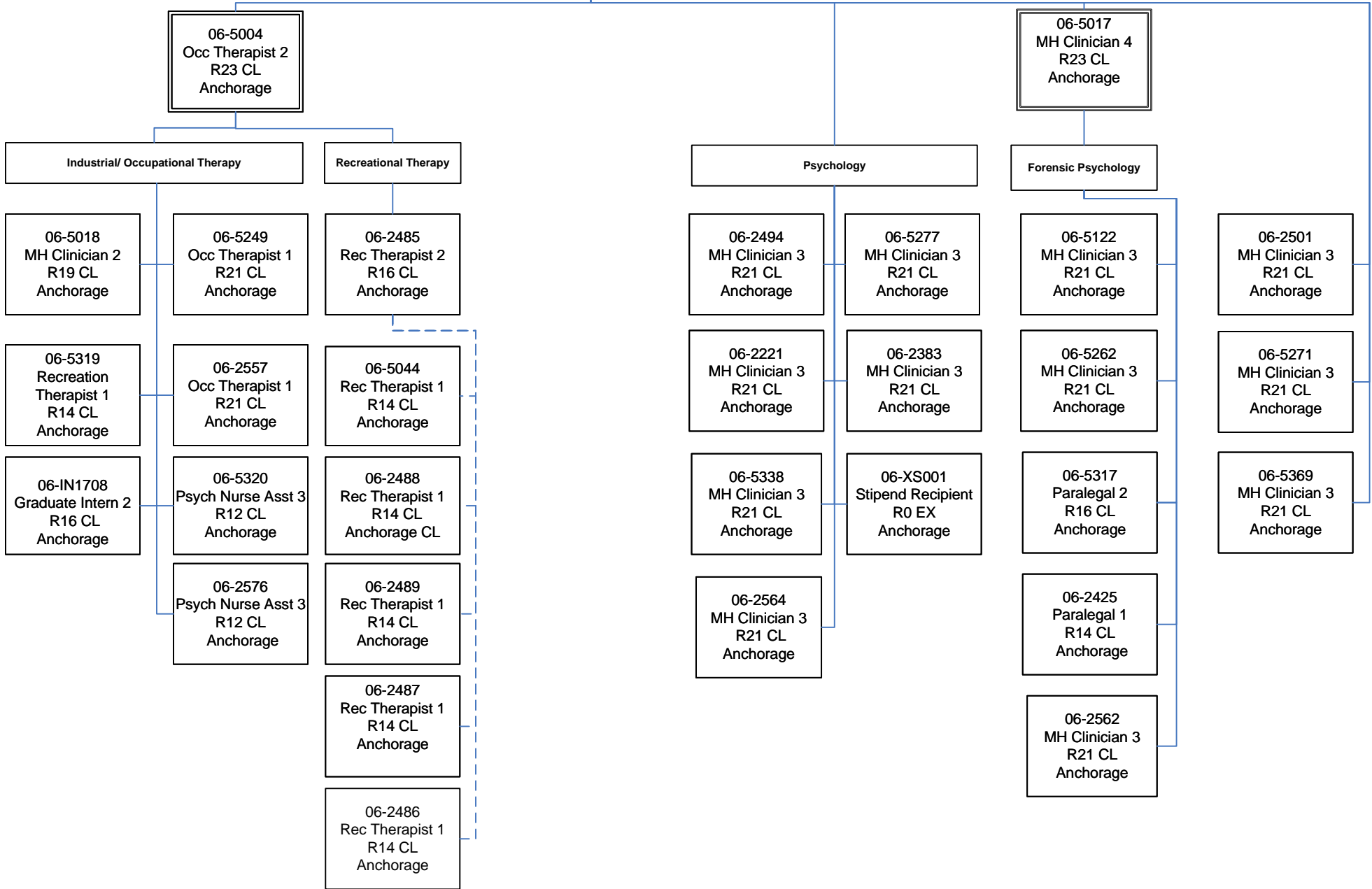


FY2023 Governor's Budget
Department of Family & Community Services
3311 - Alaska Psychiatric Institute
Pharmacy



FY2023 Governor's Budget
Department of Family & Community Services
3311 - Alaska Psychiatric Institute
Clinical Services

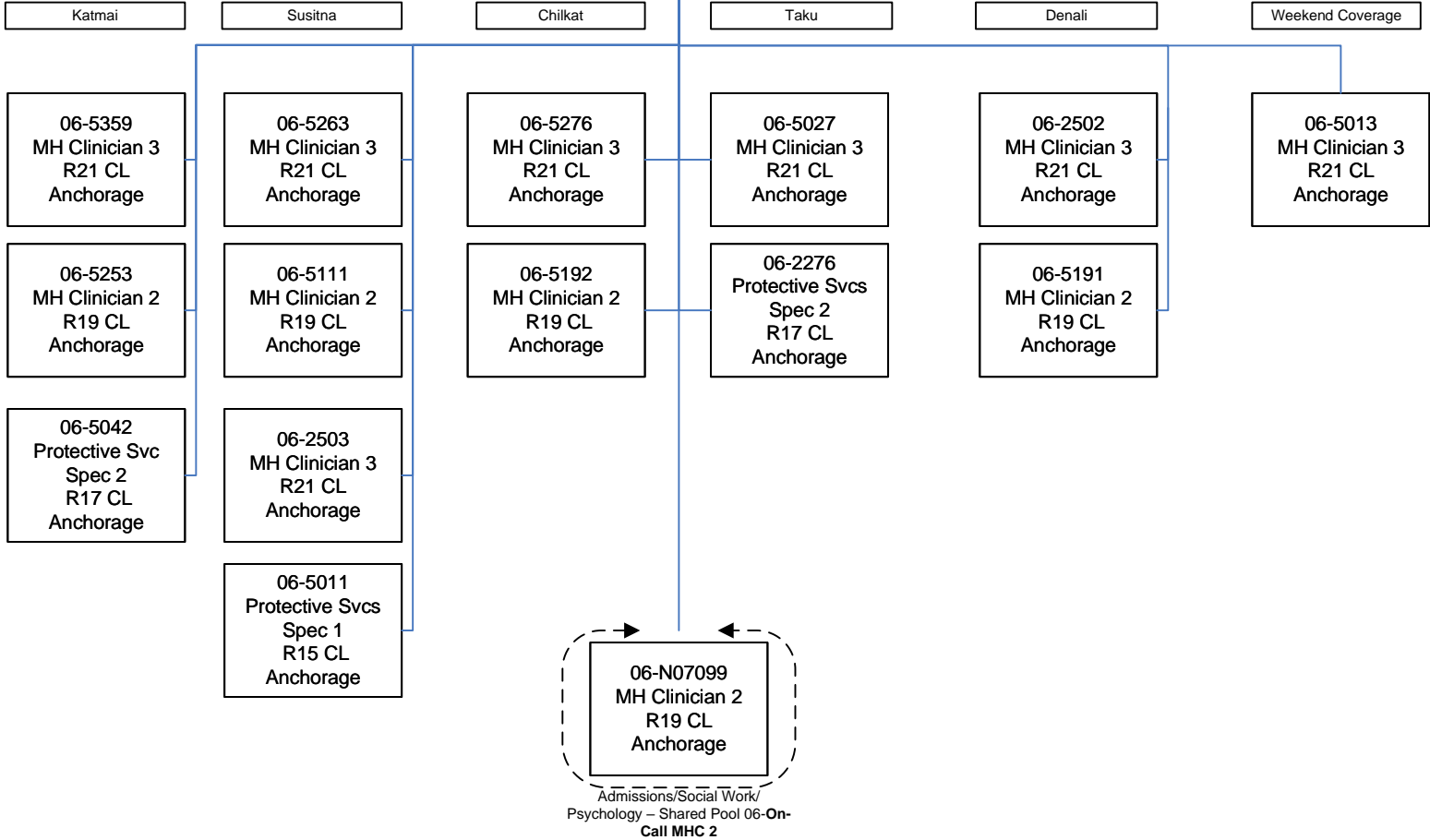
06-T230
Dir Clinical Svcs
R24 EX
Anchorage



FY2023 Governor's Budget
Department of Family & Community Services
3311 - Alaska Psychiatric Institute
Social Work Services

06-T230
Dir Clinical Svcs
R24 EX
Anchorage

06-5245
MH Clinician 4
R23 CL
Anchorage



FY2023 Governor's Budget
 Department of Family & Community Services
 3311 - Alaska Psychiatric Institute
 Nursing Administration

06-5014
 Nursing Admin
 R27 CL
 Anchorage

06-5021
 Asst Nursing Admin
 R26 CL
 Anchorage

06-5059
 Psych Nurse 4
 R26 CL
 Anchorage

Infection Control
 06-5199
 Psych Nurse 3
 R25 CL
 Anchorage

Nurse 3 (Psych) Unit Supervisors

- Taku & Denali
 06-5068
 Psych Nurse 3
 R25 CL
 Anchorage
- Katmai
 06-5054
 Psych Nurse 3
 R25 CL
 Anchorage
- Susitna
 06-5323
 Psych Nurse 3
 R25 CL
 Anchorage
- Chilkat
 06-5056
 Psych Nurse 3
 R25 CL
 Anchorage

- DAYS
- 06-2464
 Psych Nurse 2
 R23 CL
 Anchorage
 - 06-5363
 Psych Nurse Asst 2
 R11 CL
 Anchorage

- EVENINGS
- 06-2348
 Psych Nurse 2
 R23 CL
 Anchorage
 - 06-2543
 Psych Nurse Asst 3
 R12 CL
 Anchorage
 - 06-5031
 Psych Nurse Asst 2
 R11 CL
 Anchorage
 - 06-5106
 Psych Nurse 3
 R25 CL
 Anchorage
 - 06-5349
 Psych Nurse Asst 3
 R12 CL
 Anchorage
 - 06-5126
 Med Info and Svc
 Asst
 R10 CL
 Anchorage

- NIGHTS
- 06-5152
 Psych Nurse 3
 R25 CL
 Anchorage
 - 06-5089
 Psych Nurse 2
 R23 CL
 Anchorage
 - 06-2337
 Psych Nurse Asst 3
 R12 CL
 Anchorage

- 06-2577
 Psych Nurse Asst 2
 R11 CL
 Anchorage
- 06-2583
 Psych Nurse Asst 2
 R11 CL
 Anchorage
- 06-2580
 Psych Nurse Asst 2
 R11 CL
 Anchorage
- 06-2581
 Psych Nurse Asst 2
 R11 CL
 Anchorage
- 06-2579
 Psych Nurse Asst 2
 R11 CL
 Anchorage

AM 12.5

PM 12.5

- 06-5310
 Psych Nurse 3
 R25 CL
 Anchorage
- 06-5157
 Psych Nurse 2
 R23 CL
 Anchorage
- 06-5304
 Psych Nurse Asst 3
 R12 CL
 Anchorage
- 06-2532
 Psych Nurse Asst 3
 R12 CL
 Anchorage
- 06-2552
 Psych Nurse Asst 3
 R12 CL
 Anchorage
- 06-5076
 Psych Nurse 2
 R23 CL
 Anchorage
- 06-5179
 Med Info and Svc
 Asst
 R10 CL
 Anchorage
- 06-2537
 Psych Nurse Asst 3
 R12 CL
 Anchorage

- 06-2463
 Psych Nurse 2
 R23 CL
 Anchorage
- 06-2321
 Psych Nurse 3
 R25 CL
 Anchorage
- 06-5187
 Psych Nurse Asst 3
 R12 CL
 Anchorage
- 06-5372
 Psych Nurse 2
 R23 CL
 Anchorage
- 06-2520
 Psych Nurse Asst 3
 R12 CL
 Anchorage

- 06-2582
 Psych Nurse Asst 2
 R11 CL
 Anchorage
- 06-2571
 Psych Nurse Asst 2
 R11 CL
 Anchorage

FY2023 Governor's Budget
 Department of Family & Community Services
 3311 - Alaska Psychiatric Institute
 Katmai Unit

06-5054
 Psych Nurse 3
 R25 CL
 Anchorage

06-5125
 Med Info and Svc
 Asst
 R10 CL
 Anchorage

AM 12.5

06-2338
 Psych Nurse 2
 R23 CL
 Anchorage

06-5356
 Psych Nurse 2
 R23 CL
 Anchorage

06-5267
 Psych Nurse 2
 R23 CL
 Anchorage

06-2451
 Psych Nurse 2
 R23 CL
 Anchorage

06-5034
 Psych Nurse 1
 R22 CL
 Anchorage

06-5154
 Psych Nurse 1
 R22 CL
 Anchorage

06-2452
 Psych Nurse 2
 R23 CL
 Anchorage

06-5357
 Psych Nurse Asst 4
 R14 CL
 Anchorage

06-5175
 Psych Nurse Asst 3
 R12 CL
 Anchorage

06-5334
 Psych Nurse Asst 3
 R12 CL
 Anchorage

06-5197
 Psych Nurse Asst 3
 R12 CL
 Anchorage

06-5329
 Psych Nurse 2
 R23 CL
 Anchorage

06-2455
 Psych Nurse 2
 R23 CL
 Anchorage

06-2457
 Psych Nurse 2
 R23 CL
 Anchorage

06-5188
 Psych Nurse Asst 3
 R12 CL
 Anchorage

06-5302
 Psych Nurse Asst 3
 R12 CL
 Anchorage

06-2522
 Psych Nurse Asst 3
 R12 CL
 Anchorage

06-2297
 Psych Nurse Asst 2
 R11 CL
 Anchorage

06-5143
 Psych Nurse Asst 4
 R14 CL
 Anchorage

06-5278
 Psych Nurse Asst 1
 R10 CL
 Anchorage

06-5361
 Psych Nurse Asst 2
 R11 CL
 Anchorage

06-2524
 Psych Nurse Asst 3
 R12 CL
 Anchorage

06-5196
 Psych Nurse Asst 1
 R10 CL
 Anchorage

06-5075
 Psych Nurse Asst 3
 R12 CL
 Anchorage

06-5180
 Psych Nurse Asst 3
 R12 CL
 Anchorage

PM 12.5

06-5332
 Psych Nurse 2
 R23 CL
 Anchorage

06-2277
 Psych Nurse 2
 R23 CL
 Anchorage

06-5375
 Psych Nurse 3
 R25 CL
 Anchorage

06-5109
 Psych Nurse 2
 R23 CL
 Anchorage

06-5149
 Psych Nurse 1
 R22 CL
 Anchorage

06-2454
 Psych Nurse 2
 R23 CL
 Anchorage

06-5307
 Psych Nurse 1
 R22 CL
 Anchorage

06-5193
 Psych Nurse Asst 2
 R11 CL
 Anchorage

06-5280
 Psych Nurse Asst 4
 R14 CL
 Anchorage

06-2284
 Psych Nurse Ast 3
 R12 CL
 Anchorage

06-5139
 Psych Nurse Asst 3
 R12 CL
 Anchorage

06-2525
 Psych Nurse Asst 3
 R12 CL
 Anchorage

06-5155
 Psych Nurse Asst 3
 R12 CL
 Anchorage

06-2572
 Psych Nurse Asst 4
 R14 CL
 Anchorage

06-2523
 Psych Nurse Asst 3
 R12 CL
 Anchorage

06-5275
 Psych Nurse Asst 4
 R14 CL
 Anchorage

06-5233
 Psych Nurse Asst 3
 R12 CL
 Anchorage

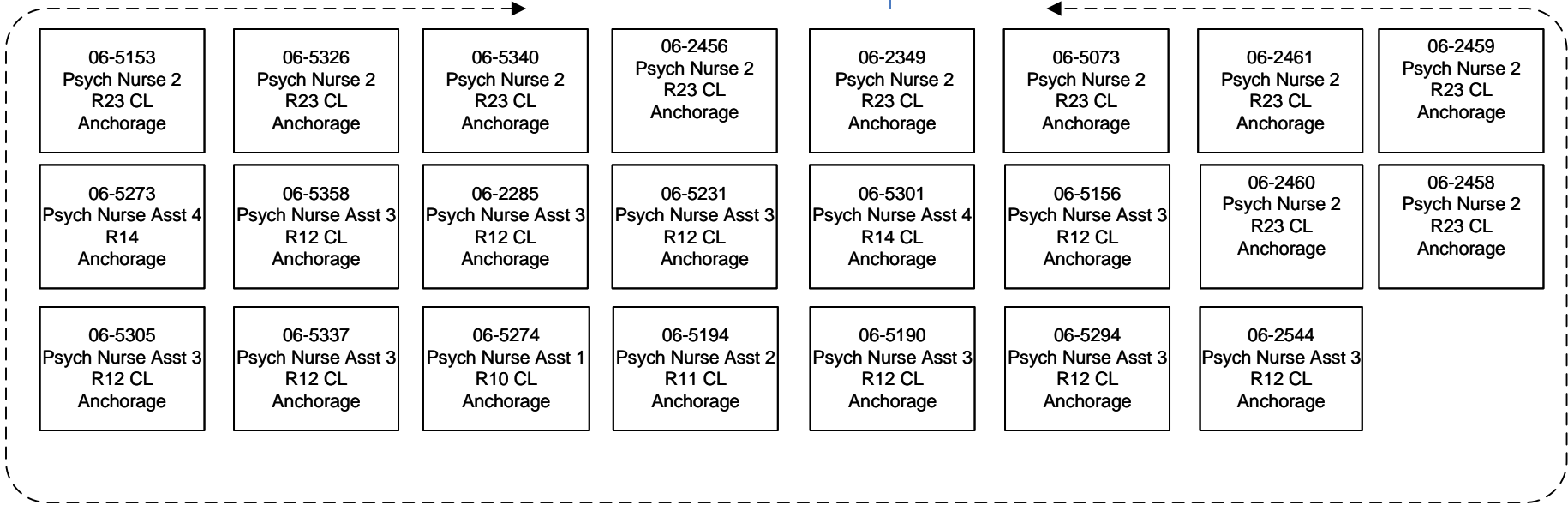
06-2526
 Psych Nurse Asst 3
 R12
 Anchorage

FY2023 Governor's Budget
 Department of Family & Community Services
 3311 - Alaska Psychiatric Institute
 Susitna Unit

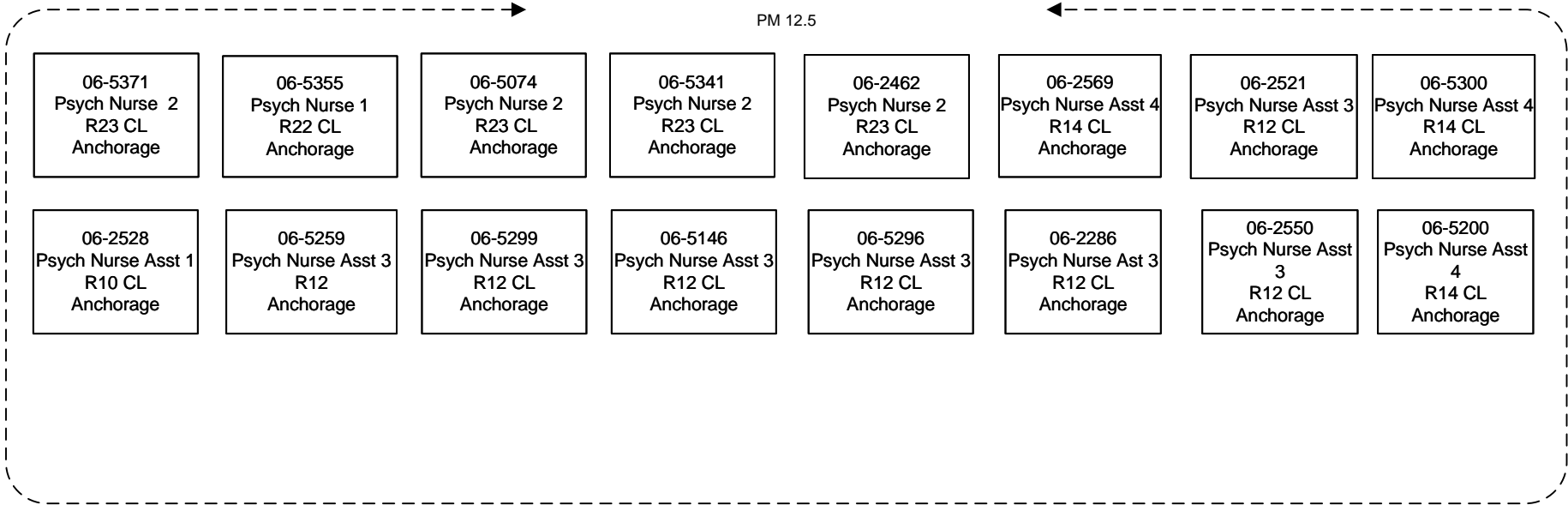
06-5323
 Psych Nurse 3
 R25 CL
 Anchorage

06-5353
 Med Info and Svc
 Asst
 R10 CL
 Anchorage

AM 12.5



PM 12.5



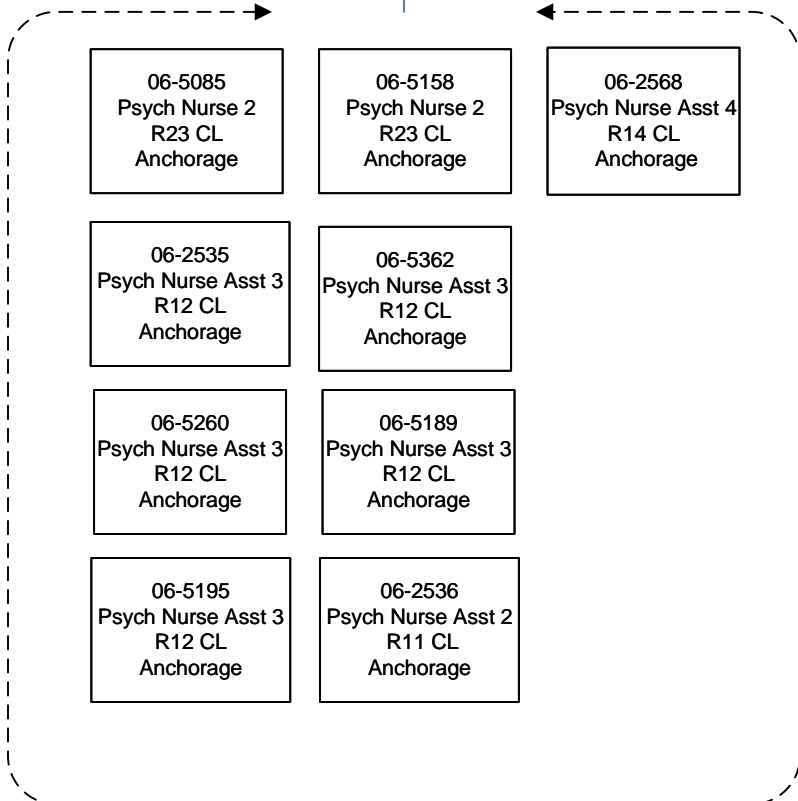
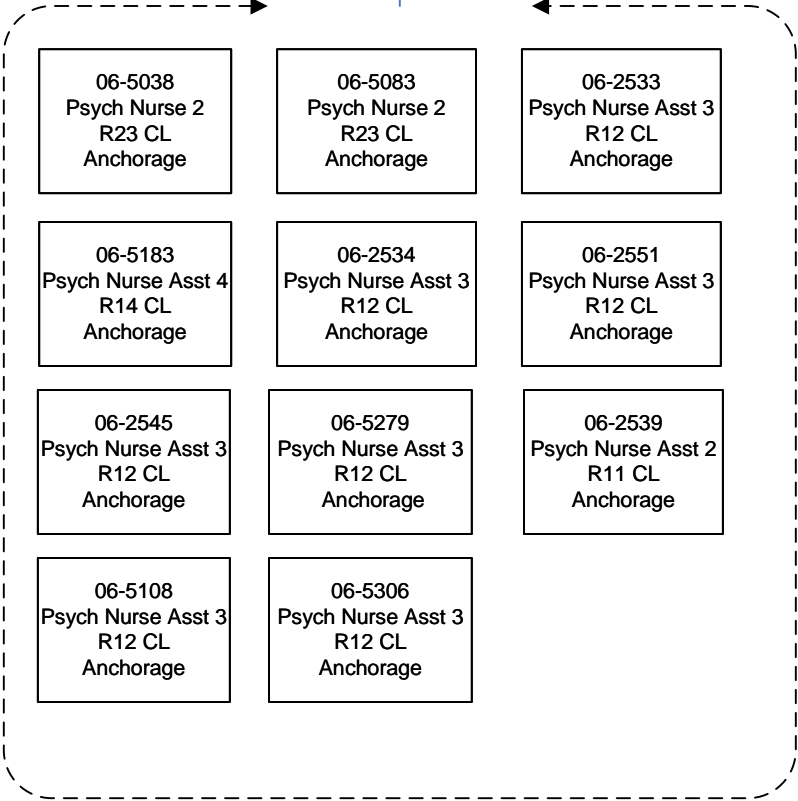
FY2023 Governor's Budget
Department of Family & Community Services
3311 - Alaska Psychiatric Institute
Taku Unit

06-5068
Psych Nurse 3
R25 CL
Anchorage

06-5365
Med Info and Svc
Asst
R10 CL
Anchorage

AM 12.5

PM 12.5



FY2023 Governor's Budget
 Department of Family & Community Services
 3311 - Alaska Psychiatric Institute
 Chilkat Unit

06-5056
 Psych Nurse 3
 R25 CL
 Anchorage

06-5176
 Med Info and Svc
 Asst
 R10 CL
 Anchorage

AM 12.5

PM 12.5

06-5086
 Psych Nurse 1
 R22 CL
 Anchorage

06-5373
 Psych Nurse 2
 R23 CL
 Anchorage

06-2467
 Psych Nurse 2
 R23 CL
 Anchorage

06-5078
 Psych Nurse 2
 R23 CL
 Anchorage

06-2465
 Psych Nurse 2
 R23 CL
 Anchorage

06-5140
 Psych Nurse Asst 4
 R14 CL
 Anchorage

06-5201
 Psych Nurse Asst 3
 R12 CL
 Anchorage

06-5182
 Psych Nurse Asst 3
 R12 CL
 Anchorage

06-2541
 Psych Nurse Asst 3
 R12 CL
 Anchorage

06-2538
 Psych Nurse Asst 3
 R12 CL
 Anchorage

06-5232
 Psych Nurse Asst 4
 R14 CL
 Anchorage

06-5235
 Psych Nurse Asst 1
 R10 CL
 Anchorage

06-5117
 Psych Nurse Asst 3
 R12 CL
 Anchorage

06-5050
 Psych Nurse 2
 R23 CL
 Anchorage

06-2540
 Psych Nurse Asst 3
 R12 CL
 Anchorage

06-2531
 Psych Nurse Asst 2
 R11 CL
 Anchorage

06-2466
 Psych Nurse 1
 R22 CL
 Anchorage

06-5090
 Psych Nurse 2
 R23 CL
 Anchorage

06-5339
 Psych Nurse 2
 R23 CL
 Anchorage

06-2570
 Psych Nurse Asst 4
 14 CL
 Anchorage

06-5113
 Psych Nurse Asst 3
 R12 CL
 Anchorage

06-2542
 Psych Nurse Asst 3
 R12 CL
 Anchorage

06-5335
 Psych Nurse Asst 3
 R12 CL
 Anchorage

06-5348
 Psych Nurse Asst 3
 R12 CL
 Anchorage

06-5308
 Psych Nurse Asst 3
 R12 CL
 Anchorage

06-5185
 Psych Nurse Asst 2
 R11 CL
 Anchorage

06-2527
 Psych Nurse Asst 1
 R10 CL
 Anchorage

06-2529
 Psych Nurse Asst 1
 R10 CL
 Anchorage

06-2584
 Psych Nurse Asst 2
 R11 CL
 Anchorage

FY2023 Governor's Budget
Department of Family & Community Services
3311 - Alaska Psychiatric Institute
Denali Unit

06-5068
Psych Nurse 3
R25 CL
Anchorage

06-5365
Med Info and Svc
Asst
R10 CL
Anchorage

AM 12.5

PM 12.5

06-2470
Psych Nurse 2
R23 CL
Anchorage

06-5324
Psych Nurse 2
R23 CL
Anchorage

06-5230
Psych Nurse Asst 4
R14 CL
Anchorage

06-5360
Psych Nurse Asst 3
R12 CL
Anchorage

06-5087
Psych Nurse Asst 3
R12 CL
Anchorage

06-5297
Psych Nurse Asst 2
R11 CL
Anchorage

06-2546
Psych Nurse Asst 1
R10 CL
Anchorage

06-2547
Psych Nurse Asst 2
R11 CL
Anchorage

06-5295
Psych Nurse Asst 3
R12 CL
Anchorage

06-2469
Psych Nurse 2
R23 CL
Anchorage

06-5130
Psych Nurse 1
R22 CL
Anchorage

06-2567
Psych Nurse Asst 4
R14 CL
Anchorage

06-5112
Psych Nurse Asst 3
R12 CL
Anchorage

06-2548
Psych Nurse Asst 1
R10 CL
Anchorage

06-2530
Psych Nurse Asst 3
R12 CL
Anchorage

06-5303
Psych Nurse Asst 3
R12 CL
Anchorage

06-2292
Psych Nurse Ast 2
R11 CL
Anchorage

06-2549
Psych Nurse Asst 2
R11 CL
Anchorage

06-5298
Psych Nurse Asst 2
R11 CL
Anchorage

FY2023 Governor's Budget
Department of Family & Community Services
3311 - Alaska Psychiatric Institute
Nursing On Call

06-5059
Psych Nurse 4
R26 CL
Anchorage

06-N07105
Psych Nurse Asst 1
R10 CL
Anchorage

06-N19007
Psych Nurse Asst 2
R11 CL
Anchorage

06-N19008
Psych Nurse Asst 3
R12 CL
Anchorage

06-N07106
Psych Nurse 1
R22 CL
Anchorage

06-N07107
Psych Nurse 2
R23 CL
Anchorage

06-N19009
Psych Nurse 3
R25 CL
Anchorage

