

State of Alaska
FY2023 Governor's Operating Budget

Department of Health
Public Assistance Field Services
Component Budget Summary

Component: Public Assistance Field Services

Contribution to Department's Mission

Promoting self-sufficiency and providing for basic living expenses to Alaskans in need.

Core Services

- Provide direct customer services in 14 offices statewide.
- Accept applications, conduct interviews, determine eligibility, and authorize timely and accurate benefits for the following programs: Supplemental Nutrition Assistance Program, Alaska Temporary Assistance, Medicaid, Adult Public Assistance, General Relief, Chronic and Acute Medical Assistance, Denali Kid Care, Senior Benefits, Low Income Heating Assistance and Medicare Part D.
- Make referrals and link public assistance recipients to employers, employment services, and social, health, education, and training programs/organizations.
- Collaboration with various departments and divisions in state government as well as regional and community-based organizations to coordinate the effective delivery of services and benefits for common customers.

Major Component Accomplishments in 2021

- Consolidated building space in Anchorage and Fairbanks areas
- Reorganization of field services staff
- Reorganization of field administrative staff
- Switched to statewide recruitment model and competency-based minimum qualifications which allows for broader applicant pool.
- Streamlined reception of email statewide
- Implemented Virtual Call Center (VCC)
- Field staff processed over 81,500 applications; 37,500 renewal and recertifications; and 151,500 reports of change, and 55,000 SNAP Emergency Assistance supplements per month (660,000 annually) in FY2021.
- Completed integration of the Heating Assistance Program into statewide workflow for more efficient administration of the program
- Implementation of an Asset Verification System.

Key Component Challenges

- Changes in federal program policies and implementation of new programs and policy changes.
- Procurement and implementation of an integrated online application and renewal and recertification forms.
- Procurement and implementation of a system to provide electronic notices.
- Integration of all programs into divisional units and continued reorganization to meet the business needs of the division.
- Effectively adjusted and processed cases under evolving COVID processing guidelines.
- Successfully continued timely authorization of benefits despite hurdles due to the cyberattack affecting major systems.
- Procurement and implementation of updated case review tool.
- Staff retention, training, and support.
- Refining recruitment process to attract the right people for the right job.
- Consolidating and streamlining communication across division units.

Significant Changes in Results to be Delivered in FY2023

- Implementation of Virtual Call Center to replace desk top phones with software that enables calls to be routed to staff working from home through their laptops.
- Fully integrate all programs in the division to achieve efficiency across all administrative processes.

- Procure and implement new programs to include: an online application that is integrated into all programs and systems, online forms for reports of change, renewal and recertifications, electronic notices, and updated case review tool.
- Continue to downsize office footprints and lease space.
- Review resources, guides, job aids and trainings for staff; update and deploy.
- Update Continuity of Operations Plan (COOP) to address wider scope of challenges.
- Mandatory training and onboarding development for new hires.

Statutory and Regulatory Authority

AS 47.27.005	Duties of the Department
AS 47.25.430-.615	Adult Public Assistance
AS 47.25.975-.990	Food Stamps
AS 47.07.010-.900	Medicaid
AS 47.45.301-.309	Senior Benefits Program
AS 47.25.120-.300	General Relief Assistance
AS 43.23.075	Eligibility For Public Assistance
AS 47.05.010-.080	Public Assistance

Contact Information
<p>Contact: Sylvan Robb, Division Director Phone: (907) 465-1630 E-mail: sylvan.rob主@alaska.gov</p>

Public Assistance Field Services Personal Services Information				
Authorized Positions			Personal Services Costs	
	FY2022 Management Plan	FY2023 Governor		
Full-time	342	342	Annual Salaries	20,310,959
Part-time	0	0	COLA	55,366
Nonpermanent	0	0	Premium Pay	0
			Annual Benefits	14,065,297
			<i>Less 1.03% Vacancy Factor</i>	<i>(353,422)</i>
			Lump Sum Premium Pay	0
Totals	342	342	Total Personal Services	34,078,200

Position Classification Summary					
Job Class Title	Anchorage	Fairbanks	Juneau	Others	Total
Administrative Assistant 2	4	1	0	3	8
Eligibility Office Manager 2	3	1	1	3	8
Eligibility Technician 2	45	18	7	65	135
Eligibility Technician 3	22	4	2	18	46
Eligibility Technician 4	8	3	2	12	25
Emp Svc Tech 2	0	9	1	16	26
Emp Svc Tech 3	0	1	0	2	3
Office Assistant 1	10	5	1	11	27
Office Assistant 2	9	1	2	11	23
Office Assistant 4	3	1	1	3	8
Pb Asst Fsm 2	0	0	0	3	3
Program Manager	0	0	0	1	1
Project Assistant	1	0	0	0	1
Public Assistance Analyst 1	5	2	0	1	8
Public Assistance Analyst 2	9	0	0	1	10
Public Asst P/O	3	0	0	1	4
Training Specialist 2	5	0	0	0	5
Training Specialist 3	1	0	0	0	1
Totals	128	46	17	151	342

Component Detail All Funds
Department of Health

Component: Public Assistance Field Services (236)
RDU: Public Assistance (73)

Non-Formula Component

	FY2021 Actuals	FY2022 Conference Committee	FY2022 Authorized	FY2022 Management Plan	FY2023 Governor	FY2022 Management Plan vs FY2023 Governor	
71000 Personal Services	37,431.4	36,584.3	35,726.1	34,937.0	34,078.2	-858.8	-2.5%
72000 Travel	5.6	5.3	5.3	0.0	0.0	0.0	0.0%
73000 Services	16,914.2	14,566.6	14,566.6	15,459.4	15,244.4	-215.0	-1.4%
74000 Commodities	142.8	477.0	477.0	307.3	307.3	0.0	0.0%
75000 Capital Outlay	0.0	5.0	5.0	5.0	5.0	0.0	0.0%
77000 Grants, Benefits	0.0	0.0	0.0	0.0	0.0	0.0	0.0%
78000 Miscellaneous	0.0	0.0	0.0	0.0	0.0	0.0	0.0%
Totals	54,494.0	51,638.2	50,780.0	50,708.7	49,634.9	-1,073.8	-2.1%
Fund Sources:							
1002 Fed Rcpts (Fed)	26,487.3	29,460.2	29,460.2	29,388.9	29,505.9	117.0	0.4%
1003 G/F Match (UGF)	26,491.7	18,869.8	18,011.6	18,011.6	17,426.4	-585.2	-3.2%
1004 Gen Fund (UGF)	0.0	783.9	783.9	783.9	210.1	-573.8	-73.2%
1007 I/A Rcpts (Other)	1,416.7	2,378.4	2,378.4	2,378.4	2,346.6	-31.8	-1.3%
1108 Stat Desig (Other)	98.3	145.9	145.9	145.9	145.9	0.0	0.0%
Unrestricted General (UGF)	26,491.7	19,653.7	18,795.5	18,795.5	17,636.5	-1,159.0	-6.2%
Designated General (DGF)	0.0	0.0	0.0	0.0	0.0	0.0	0.0%
Other Funds	1,515.0	2,524.3	2,524.3	2,524.3	2,492.5	-31.8	-1.3%
Federal Funds	26,487.3	29,460.2	29,460.2	29,388.9	29,505.9	117.0	0.4%
Positions:							
Permanent Full Time	460	395	344	342	342	0	0.0%
Permanent Part Time	6	0	0	0	0	0	0.0%
Non Permanent	0	0	0	0	0	0	0.0%

Change Record Detail - Multiple Scenarios with Descriptions
Department of Health

Component: Public Assistance Field Services (236)
RDU: Public Assistance (73)

Scenario/Change Record Title	Trans Type	Totals	Personal Services	Travel	Services	Commodities	Capital Outlay	Grants, Benefits	Miscellaneous	Positions		NP
										PFT	PPT	
***** Changes From FY2022 Conference Committee To FY2022 Authorized *****												
FY2022 Conference Committee												
	ConfCom	51,638.2	36,584.3	5.3	14,566.6	477.0	5.0	0.0	0.0	395	0	0
1002 Fed Rcpts		29,460.2										
1003 G/F Match		18,869.8										
1004 Gen Fund		783.9										
1007 I/A Rcpts		2,378.4										
1108 Stat Desig		145.9										
Delete Public Assistance Positions Due to Efficiencies												
	Veto	-858.2	-858.2	0.0	0.0	0.0	0.0	0.0	0.0	-51	0	0
1003 G/F Match		-858.2										
Funding is insufficient to support the added positions. As the Division of Public Assistance streamlines workload management and moves its operations electronic, the amount of manual work and related positions decreases.												
Subtotal		50,780.0	35,726.1	5.3	14,566.6	477.0	5.0	0.0	0.0	344	0	0
***** Changes From FY2022 Authorized To FY2022 Management Plan *****												
Transfer Public Assistance Program Officer (06-8042) to Public Assistance Administration												
	Trout	-71.3	-71.3	0.0	0.0	0.0	0.0	0.0	0.0	-1	0	0
1002 Fed Rcpts		-71.3										
The following position is transferred to Public Assistance Administration to align with the component the position reports to:												
Full-time Public Assistance Program Officer (06-8042), range 21, located in Juneau												
Transfer Public Assistance Analyst 2 (06-8589) to Quality Control to Lead Quality Assurance Team												
	Trout	0.0	0.0	0.0	0.0	0.0	0.0	0.0	0.0	-1	0	0
The following position is transferred to Quality Control to lead a quality assurance team performing federally required compliance management evaluations for the Supplemental Nutrition Assistance Program:												
Full-time Public Assistance Analyst 2 (06-8589), range 18, located in Anchorage												
Align Authority with Anticipated Expenditures												
	LIT	0.0	-717.8	-5.3	892.8	-169.7	0.0	0.0	0.0	0	0	0
Transfer authority from personal services, travel, and commodities to cover anticipated services costs. The remaining personal services, travel, and commodities authority is sufficient to cover anticipated expenditures.												

Change Record Detail - Multiple Scenarios with Descriptions
Department of Health

Component: Public Assistance Field Services (236)
RDU: Public Assistance (73)

Scenario/Change Record Title	Trans Type	Totals	Personal Services	Travel	Services	Commodities	Capital Outlay	Grants, Benefits	Miscellaneous	Positions		NP
										PFT	PPT	
Subtotal		50,708.7	34,937.0	0.0	15,459.4	307.3	5.0	0.0	0.0	342	0	0
***** Changes From FY2022 Management Plan To FY2023 Governor *****												
FY2023 Salary and Benefit Adjustments												
	SalAdj	58.2	58.2	0.0	0.0	0.0	0.0	0.0	0.0	0	0	0
1002 Fed Rcpts		29.6										
1003 G/F Match		27.9										
1004 Gen Fund		0.7										
Includes: FY2023 Supervisory Unit 1% COLA: \$52.3												
FY2023 SU BU - Supervisory Employees (SS) 1% COLA: \$5.9												
FY2023 Supervisory Employees Health Insurance, SBS, and Risk Management Rate Changes												
	SalAdj	98.2	98.2	0.0	0.0	0.0	0.0	0.0	0.0	0	0	0
1002 Fed Rcpts		49.9										
1003 G/F Match		46.6										
1004 Gen Fund		1.7										
FY2023 Change Supervisory Employees (SS) - Health Insurance from \$1,555 to \$1,685; SBS and Risk Management Rates: \$98.2												
FY2023 General Government Unit SBS and Risk Management Rate Changes												
	SalAdj	70.3	70.3	0.0	0.0	0.0	0.0	0.0	0.0	0	0	0
1002 Fed Rcpts		37.5										
1003 G/F Match		30.0										
1007 I/A Rcpts		2.8										
FY2023 Change General Government Unit (GG, GP, GY, GZ) - SBS, and Risk Management Rates: \$70.3												
FY2023 PERS Actuarial Rate Adjustment to 24.79% Ch9 SLA2021 (SB55)												
	SalAdj	-1,085.5	-1,085.5	0.0	0.0	0.0	0.0	0.0	0.0	0	0	0
1002 Fed Rcpts		-573.5										
1003 G/F Match		-474.7										
1004 Gen Fund		-2.7										
1007 I/A Rcpts		-34.6										
Includes: FY2023 Adjustment for PERS ARM Board Approved Rate of 24.79% (from 30.11%): \$-1,085.5												
Delete Authority No Longer Needed for Devices												
	Dec	-215.0	0.0	0.0	-215.0	0.0	0.0	0.0	0.0	0	0	0
1003 G/F Match		-215.0										

Change Record Detail - Multiple Scenarios with Descriptions
Department of Health

Component: Public Assistance Field Services (236)
RDU: Public Assistance (73)

Scenario/Change Record Title	Trans Type	Totals	Personal Services	Travel	Services	Commodities	Capital Outlay	Grants, Benefits	Miscellaneous	Positions		NP
										PFT	PPT	
The Division of Public Assistance, Field Services, deleted 121 positions in FY2022. The savings in device counts related to the position reduction is realized as the division is paying less for core services that use device counts as a way to allocate costs.												
Realign PERS Rate Adjustment by Fund Source Ch9 SLA2021 (SB55)												
	FndChg	0.0	0.0	0.0	0.0	0.0	0.0	0.0	0.0	0	0	0
1002 Fed Rcpts		573.5										
1004 Gen Fund		-573.5										
Fund source adjustments were made to this component in the SB55 fiscal note (Ch 9 SLA 2021) to accommodate the application of the actuarial PERS rate in FY2022. This transaction realigns fund sources to reduce the UGF subsidy assigned in the fiscal note.												
Totals		49,634.9	34,078.2	0.0	15,244.4	307.3	5.0	0.0	0.0	342	0	0

Line Item Detail (1676)
Department of Health
Travel

Component: Public Assistance Field Services (236)

Line Number	Line Name		FY2021 Actuals	FY2022 Management Plan	FY2023 Governor
2000	Travel		5.6	0.0	0.0
Object Class	Servicing Agency	Explanation	FY2021 Actuals	FY2022 Management Plan	FY2023 Governor
2000 Travel Detail Totals			5.6	0.0	0.0
2000	In-State Employee Travel	Employee travel in-state	0.1	0.0	0.0
2005	Moving Costs	Moving expenditures	5.5	0.0	0.0

Line Item Detail (1676)
Department of Health
Services

Component: Public Assistance Field Services (236)

Line Number	Line Name		FY2021 Actuals	FY2022 Management Plan	FY2023 Governor
3000	Services		16,914.2	15,459.4	15,244.4
Object Class	Servicing Agency	Explanation	FY2021 Actuals	FY2022 Management Plan	FY2023 Governor
3000 Services Detail Totals			16,914.2	15,459.4	15,244.4
3000	Education Services	Training and conferences	8.9	9.2	6.0
3001	Financial Services	EBT Vendor charges	422.6	221.3	350.0
3003	Information Technology	Maintenance and Operations for the heating assistance system; Random Moment Time Sampling; Veracode; Bluezone licenses; and reporting tools (Finalist).	2,706.0	2,971.3	507.6
3003	Information Technology	ARIES contractor IT Support. ARIES is the primary eligibility system for the Medicaid program. This support contract will allow for system maintenance and operations work to be performed for the system to get into compliance with federal regulations and maintain compliance.	0.0	0.0	3,314.5
3003	Information Technology	Asset Verification and Employment and Income Verification System. Compliance requirement for ACA and Medicaid.	0.0	0.0	700.0
3003	Information Technology	Electronic Document Management System Maintenance and Operations costs and annual software assurances.	0.0	0.0	840.0
3004	Telecommunications	Telecommunications Utilities Cost	200.7	174.8	174.8
3004	Telecommunications	Virtual Contact Center support costs and annual subscription costs.	0.0	0.0	84.0

Line Item Detail (1676)
Department of Health
Services

Component: Public Assistance Field Services (236)

Object Class		Servicing Agency	Explanation	FY2021 Actuals	FY2022 Management Plan	FY2023 Governor
			3000 Services Detail Totals	16,914.2	15,459.4	15,244.4
3005	Health Services		TEFRA Medicaid services	359.1	360.0	360.0
3006	Delivery Services		Freight/shipping, express charges and postage for Public Assistance (PA) local field offices and postage for PA recipient mailings (computer generated mailings include recipient benefits notices and recertifications), mail meters, and courier services.	678.5	275.3	675.3
3007	Advertising and Promotions		Advertising for required public notice program changes and services.	1.0	1.0	1.0
3008	Utilities		Disposal and shredding	39.7	44.5	44.5
3009	Structure/Infrastructure/Land		Structure changes to workspace to better align the business process. Records Storage	413.3	42.8	42.8
3010	Equipment/Machinery		Contractual costs for maintenance and replacement of state owned equipment. Equipment leases for printing and mailing services.	165.2	154.1	154.1
3011	Other Services		Fee Agents, printing services, Denali Kid Care card printing, consulting services, software licenses	1,633.2	1,700.0	500.0
3011	Other Services		Public Consulting Group contract for TANF MOE coordination.	0.0	0.0	437.0
3017	Inter-Agency Information Technology Non-Telecommunications	Admin - Department-wide	Reimbursable Services Agreement for Management Information Computer Systems and Server Hosting.	2,733.9	1,737.3	2,211.5
3017	Inter-Agency Information Technology Non-Telecommunications	Health - Information Technology Services (2754)	Reimbursable Services Agreement for Information Technology Customer Services, Network Services, Business Applications Chargeback, and Heating Assistance Program (ECOS) support	2,902.1	2,803.2	1,285.0

Line Item Detail (1676)
Department of Health
Services

Component: Public Assistance Field Services (236)

Object Class		Servicing Agency	Explanation	FY2021 Actuals	FY2022 Management Plan	FY2023 Governor
3000 Services Detail Totals				16,914.2	15,459.4	15,244.4
3018	Inter-Agency Information Technology Telecommunications	Admin - Department-wide	Reimbursable Services Agreement for OIT Core services and Telecommunications.	195.6	195.6	113.5
3020	Inter-Agency Building Maintenance	Univ - Department-wide	University Center Mall renovation costs	244.5	245.0	0.0
3021	Inter-Agency Mail	Admin - Department-wide	Reimbursable Services Agreement for central mail services.	10.5	28.0	11.9
3022	Inter-Agency Human Resources	Admin - Department-wide	Reimbursable Services Agreement with the Department of Administration for Human resources chargeback.	269.6	335.5	246.1
3023	Inter-Agency Building Leases	Admin - Department-wide	Building Leases	2,418.2	2,456.0	1,609.5
3023	Inter-Agency Building Leases	Trans - Department-wide	Leasing agreements in Kodiak and Sitka with the Department of Transportation	0.0	24.2	24.2
3024	Inter-Agency Legal	Law - Department-wide	Reimbursable Services Agreement with Law for legal services provided on behalf of the division, including Health Insurance Portability and Accountability Act compliance and regulations review.	9.4	9.2	7.6
3026	Inter-Agency Insurance	Admin - Department-wide	Reimbursable Services Agreement with Department of Administration's risk management for insurance.	64.8	30.0	59.2
3028	Inter-Agency Americans with Disabilities Act Compliance	Admin - Department-wide	Americans with Disabilities Act Compliance Chargeback	4.1	3.6	3.8
3032	Inter-Agency Health	Health - Bureau of Vital Statistics (961)	Reimbursable Services Agreement with Division of Public Health's Bureau of Vital Statistics.	22.7	27.5	27.5
3037	State Equipment Fleet	Trans - Department-wide	State equipment fleet fuel, services/parts and other allowable expenses.	19.5	17.9	17.9

Line Item Detail (1676)
Department of Health
Services

Component: Public Assistance Field Services (236)

Object Class		Servicing Agency	Explanation	FY2021 Actuals	FY2022 Management Plan	FY2023 Governor
3000 Services Detail Totals				16,914.2	15,459.4	15,244.4
3038	Inter-Agency Management/Consulting	Admin - Department-wide	Shared Services Chargeback for Travel Services & Reimbursable Service Agreement for Server hosting for ARIES eligibility system	149.2	66.5	136.1
3038	Inter-Agency Management/Consulting	Gov - Department-wide	Implementing administrative order 302 - Administrative Support Director to Office of Management and Budget, Office of Management and Budget budget analyst support	60.8	60.7	55.5
3038	Inter-Agency Management/Consulting	Health - Administrative Support Svcs (320)	Reimbursable Services Agreement with Administrative Support Services for Finance and Management services and audit support.	199.2	199.2	172.8
3038	Inter-Agency Management/Consulting	Health - Commissioner's Office (317)	Reimbursable Services Agreement with Administrative Support Services for Commissioner's Office support.	38.2	38.3	33.2
3038	Inter-Agency Management/Consulting	Health - Information Technology Services (2754)	Reimbursable Services Agreement for ARIES Support Services	449.0	500.0	400.0
3038	Inter-Agency Management/Consulting	Health - Public Affairs (2874)	Reimbursable Services Agreement with Administrative Support Services for Public Affairs office support.	42.5	47.8	41.4
3038	Inter-Agency Management/Consulting	Health - Senior/Disabilities Svcs Admin (2663)	Reimbursable Services Agreement for Tax Equity and Fiscal Responsibility Act (TEFRA).	136.2	157.7	136.3
3038	Inter-Agency Management/Consulting	Labor - Department-wide	Reimbursable Services Agreement with the Disability Determination Services (under Dept of Labor VOC Rehab) for the state only disability determinations for Medicaid applicants who need a disability decision as part of Medicaid eligibility. Reimbursable Services Agreement for Alaska Workforce Investment Board, Secure Access	206.5	353.4	291.3

Line Item Detail (1676)
Department of Health
Services

Component: Public Assistance Field Services (236)

Object Class		Servicing Agency	Explanation	FY2021 Actuals	FY2022 Management Plan	FY2023 Governor
			3000 Services Detail Totals	16,914.2	15,459.4	15,244.4
3038	Inter-Agency Management/Consulting	Rev - Department-wide	Management (SAM), Population Estimates Demographic Support. Reimbursable Services Agreement for Weatherization Services	109.5	168.5	168.5

Line Item Detail (1676)
Department of Health
Commodities

Component: Public Assistance Field Services (236)

Line Number	Line Name		FY2021 Actuals	FY2022 Management Plan	FY2023 Governor
4000	Commodities		142.8	307.3	307.3
Object Class	Servicing Agency	Explanation	FY2021 Actuals	FY2022 Management Plan	FY2023 Governor
4000 Commodities Detail Totals			142.8	307.3	307.3
4000	Business	Business supplies for day-to-day operations and computer refresh.	141.8	307.3	307.3
4002	Household/Institutional	Commodities expenditures	0.8	0.0	0.0
4004	Safety	Safety expenditures	0.2	0.0	0.0

Line Item Detail (1676)
Department of Health
Capital Outlay

Component: Public Assistance Field Services (236)

Line Number	Line Name		FY2021 Actuals	FY2022 Management Plan	FY2023 Governor
5000	Capital Outlay		0.0	5.0	5.0
Object Class	Servicing Agency	Explanation	FY2021 Actuals	FY2022 Management Plan	FY2023 Governor
5000 Capital Outlay Detail Totals			0.0	5.0	5.0
5004	Equipment	Equipment replacement	0.0	5.0	5.0

Revenue Detail (1681)
Department of Health

Component: Public Assistance Field Services (236)

Revenue Type (OMB Fund Code) Revenue Source	Component	Comment	FY2021 Actuals	FY2022 Management Plan	FY2023 Governor
5002 Fed Rcpts (1002 Fed Rcpts)			26,487.3	29,388.9	29,505.9
5019 Federal - Miscellaneous Grants		Supplemental Nutrition Assistance Program-Federal restricted receipts are based on an approved cost allocation plan using staff time studies and document counts to allocate costs by federal program.	26,487.3	29,388.9	29,505.9
		Title IV A-Federal restricted receipts are based on an approved cost allocation plan using staff time studies and document counts to allocate costs by federal program.			
		Title XIX Map-Federal restricted receipts are based on an approved cost allocation plan using staff time studies and document counts to allocate costs by federal program.			
		Title XIX Map Admin-Federal restricted receipts are based on an approved cost allocation plan using staff time studies and document counts to allocate costs by federal program.			
		Federal Projects Health-Federal restricted receipts are based on an approved cost allocation plan using staff time studies and document counts to allocate costs by federal program.			
5007 I/A Rcpts (1007 I/A Rcpts)			1,416.7	2,378.4	2,346.6
5301 Inter-Agency Receipts	Health - Behavioral Health	Reimbursable Services Agreement	50.0	50.0	50.0

Revenue Detail (1681)
Department of Health

Component: Public Assistance Field Services (236)

Revenue Type (OMB Fund Code) Revenue Source	Component	Comment	FY2021 Actuals	FY2022 Management Plan	FY2023 Governor
5301 Inter-Agency Receipts	Administration (2665) Health - PFD Hold Harmless (225)	for Medicaid Eligibility Technician Reimbursable Services Agreement between the Public Assistance Field Services component and the Permanent Fund Dividend (PFD) Hold Harmless component. The PFD Hold Harmless component provides the administrative funding for the public assistance maintenance work impacted by clients receiving the Alaska Permanent Fund Dividend.	1,366.7	2,328.4	2,296.6
5108 Stat Desig (1108 Stat Desig)			98.3	145.9	145.9
5204 Statutory Dsgntd Prgm Rcpts Hlth & Hmn Svcs - Chrsg for Svcs		State personnel providing tribal Medicaid support at the Alaska Native Medical Center.	98.3	145.9	145.9
6003 G/F Match (1003 G/F Match)			0.0	18,011.6	17,426.4
6103 Match - Miscellaneous		General fund match authority	0.0	18,011.6	17,426.4
6004 Gen Fund (1004 Gen Fund)			0.0	783.9	210.1
6004 General Fund Public Protection - Judgement Settlemnt		General fund	0.0	783.9	210.1

Inter-Agency Services (1682)
Department of Health

Component: Public Assistance Field Services (236)

	FY2021 Actuals	FY2022 Management Plan	FY2023 Governor
Component Totals	10,286.0	9,505.1	7,052.8
With Department of Administration	5,845.9	4,852.5	4,391.6
With Department of Health	3,789.9	3,773.7	2,096.2
With University of Alaska	244.5	245.0	0.0
With Department of Transportation/Public Facilities	19.5	42.1	42.1
With Department of Law	9.4	9.2	7.6
With Office of the Governor	60.8	60.7	55.5
With Department of Labor and Workforce Development	206.5	353.4	291.3
With Department of Revenue	109.5	168.5	168.5

Object Class	Servicing Agency	Explanation	FY2021 Actuals	FY2022 Management Plan	FY2023 Governor
3017	Inter-Agency Information Technology Non-Telecommunications	Admin - Department-wide Reimbursable Services Agreement for Management Information Computer Systems and Server Hosting.	2,733.9	1,737.3	2,211.5
3017	Inter-Agency Information Technology Non-Telecommunications	Health - Information Technology Services (2754) Reimbursable Services Agreement for Information Technology Customer Services, Network Services, Business Applications Chargeback, and Heating Assistance Program (ECOS) support	2,902.1	2,803.2	1,285.0
3018	Inter-Agency Information Technology Telecommunications	Admin - Department-wide Reimbursable Services Agreement for OIT Core services and Telecommunications.	195.6	195.6	113.5
3020	Inter-Agency Building Maintenance	Univ - Department-wide University Center Mall renovation costs	244.5	245.0	0.0
3021	Inter-Agency Mail	Admin - Department-wide Reimbursable Services Agreement for central mail services.	10.5	28.0	11.9
3022	Inter-Agency Human Resources	Admin - Department-wide Reimbursable Services Agreement with the Department of Administration for Human resources chargeback.	269.6	335.5	246.1

Inter-Agency Services (1682)
Department of Health

Component: Public Assistance Field Services (236)

Object Class	Servicing Agency	Explanation	FY2021 Actuals	FY2022 Management Plan	FY2023 Governor	
3023	Inter-Agency Building Leases	Admin - Department-wide	Building Leases	2,418.2	2,456.0	1,609.5
3023	Inter-Agency Building Leases	Trans - Department-wide	Leasing agreements in Kodiak and Sitka with the Department of Transportation	0.0	24.2	24.2
3024	Inter-Agency Legal	Law - Department-wide	Reimbursable Services Agreement with Law for legal services provided on behalf of the division, including Health Insurance Portability and Accountability Act compliance and regulations review.	9.4	9.2	7.6
3026	Inter-Agency Insurance	Admin - Department-wide	Reimbursable Services Agreement with Department of Administration's risk management for insurance.	64.8	30.0	59.2
3028	Inter-Agency Americans with Disabilities Act Compliance	Admin - Department-wide	Americans with Disabilities Act Compliance Chargeback	4.1	3.6	3.8
3032	Inter-Agency Health	Health - Bureau of Vital Statistics (961)	Reimbursable Services Agreement with Division of Public Health's Bureau of Vital Statistics.	22.7	27.5	27.5
3037	State Equipment Fleet	Trans - Department-wide	State equipment fleet fuel, services/parts and other allowable expenses.	19.5	17.9	17.9
3038	Inter-Agency Management/Consulting	Admin - Department-wide	Shared Services Chargeback for Travel Services & Reimbursable Service Agreement for Server hosting for ARIES eligibility system	149.2	66.5	136.1
3038	Inter-Agency Management/Consulting	Gov - Department-wide	Implementing administrative order 302 - Administrative Support Director to Office of Management and Budget, Office of Management and Budget budget analyst support	60.8	60.7	55.5
3038	Inter-Agency Management/Consulting	Health - Administrative Support Svcs (320)	Reimbursable Services Agreement with Administrative Support Services for Finance and Management services and audit support.	199.2	199.2	172.8
3038	Inter-Agency Management/Consulting	Health - Commissioner's Office (317)	Reimbursable Services Agreement with Administrative Support Services	38.2	38.3	33.2

Inter-Agency Services (1682)
Department of Health

Component: Public Assistance Field Services (236)

Object Class		Servicing Agency	Explanation	FY2021 Actuals	FY2022 Management Plan	FY2023 Governor
			for Commissioner's Office support.			
3038	Inter-Agency Management/Consulting	Health - Information Technology Services (2754)	Reimbursable Services Agreement for ARIES Support Services	449.0	500.0	400.0
3038	Inter-Agency Management/Consulting	Health - Public Affairs (2874)	Reimbursable Services Agreement with Administrative Support Services for Public Affairs office support.	42.5	47.8	41.4
3038	Inter-Agency Management/Consulting	Health - Senior/Disabilities Svcs Admin (2663)	Reimbursable Services Agreement for Tax Equity and Fiscal Responsibility Act (TEFRA).	136.2	157.7	136.3
3038	Inter-Agency Management/Consulting	Labor - Department-wide	Reimbursable Services Agreement with the Disability Determination Services (under Dept of Labor VOC Rehab) for the state only disability determinations for Medicaid applicants who need a disability decision as part of Medicaid eligibility. Reimbursable Services Agreement for Alaska Workforce Investment Board, Secure Access Management (SAM), Population Estimates Demographic Support.	206.5	353.4	291.3
3038	Inter-Agency Management/Consulting	Rev - Department-wide	Reimbursable Services Agreement for Weatherization Services	109.5	168.5	168.5

Personal Services Expenditure Detail
Department of Health

Scenario: FY2023 Governor (18673)
Component: Public Assistance Field Services (236)
RDU: Public Assistance (73)

PCN	Job Class Title	Time Status	Retire Code	Barg Unit	Location	Salary Sched	Range / Step	Comp Months	Split / Count	Annual Salaries	COLA	Premium Pay	Annual Benefits	Total Costs	UGF Amount
02-7625	Training Specialist 2	FT	A	GP	Anchorage	200	18D / E	12.0		67,942	0	0	44,056	111,998	57,119
05-2302	Public Assistance Analyst 1	FT	A	GP	Anchorage	200	16L / M	12.0		73,770	0	0	46,224	119,994	61,197
05-2317	Public Assistance Analyst 1	FT	A	GG	Kenai	99	16O / P	12.0		78,375	0	0	47,937	126,312	64,419
05-8711	Emp Svc Tech 2	FT	A	GP	Wasilla	200	15B / C	12.0		50,939	0	0	37,731	88,670	0
06-1030	Public Assistance Analyst 1	FT	A	GP	Anchorage	200	16N	12.0		76,362	0	0	47,188	123,550	63,011
06-4938	Eligibility Technician 2	FT	A	GP	Anchorage	200	14C / D	12.0		50,486	0	0	37,562	88,048	40,502
06-4939	Office Assistant 1	FT	A	GP	Anchorage	200	8A / B	12.0		31,701	0	0	30,574	62,275	28,024
06-8003	Public Assistance Analyst 2	FT	A	GP	Anchorage	200	18K / L	12.0		81,881	0	0	49,241	131,122	66,872
06-8031	Eligibility Technician 2	FT	A	GP	Bethel	250	14F / G	12.0		82,898	0	0	49,619	132,517	60,958
06-8032	Office Assistant 4	FT	A	SS	Ketchikan	600	12A / B	12.0		44,148	606	0	36,804	81,558	36,701
06-8034	Eligibility Technician 2	FT	A	GP	Nome	237	14J	12.0		79,931	0	0	48,516	128,447	59,086
06-8035	Eligibility Technician 2	FT	A	GP	Sitka	205	14D / E	12.0		53,877	0	0	38,824	92,701	42,643
06-8036	Eligibility Technician 2	FT	A	GP	Fairbanks	203	14B / C	12.0		49,056	0	0	37,030	86,086	39,600
06-8037	Eligibility Office Manager 2	FT	A	SS	Ketchikan	200	19E / F	12.0		81,342	1,116	0	50,641	133,099	67,881
06-8039	Eligibility Office Manager 2	FT	A	SS	Juneau	205	19C / D	12.0		79,037	1,084	0	49,783	129,904	66,251
06-8040	Eligibility Technician 4	FT	A	SS	Fairbanks	203	17B / C	12.0		65,473	898	0	44,737	111,108	51,110
06-8041	Public Asst P/O	FT	A	SS	Kenai	200	21F / J	12.0		96,959	1,330	0	56,450	154,739	23,211
06-8043	Eligibility Technician 4	FT	A	SS	Anchorage	200	17E / F	12.0		71,594	982	0	47,014	119,590	55,011
06-8044	Eligibility Technician 4	FT	A	SS	Wasilla	200	17D / E	12.0		68,364	938	0	45,813	115,115	52,953
06-8048	Public Assistance Analyst 2	FT	A	GP	Anchorage	200	18K / L	12.0		80,250	0	0	48,634	128,884	65,731
06-8049	Office Assistant 2	FT	A	GP	Sitka	205	10E / F	12.0		42,759	0	0	34,688	77,447	34,851
06-8050	Eligibility Office Manager 2	FT	A	SS	Kenai	200	19A / B	12.0		72,821	999	0	47,471	121,291	61,858
06-8051	Eligibility Technician 2	FT	A	GP	Fairbanks	203	14F / G	12.0		56,167	0	0	39,675	95,842	44,087
06-8054	Eligibility Technician 2	FT	A	GP	Kenai	200	14B / C	12.0		47,816	0	0	36,569	84,385	38,817
06-8057	Eligibility Technician 3	FT	A	GP	Fairbanks	203	16G / J	12.0		67,945	0	0	44,057	112,002	51,521
06-8060	Eligibility Technician 3	FT	A	GP	Anchorage	200	16D / E	12.0		59,616	0	0	40,958	100,574	46,264
06-8062	Eligibility Technician 3	FT	A	GP	Anchorage	99	16P / Q	12.0		83,207	0	0	49,734	132,941	61,153
06-8063	Eligibility Technician 4	FT	A	SS	Ketchikan	200	17E / F	12.0		72,514	995	0	47,357	120,866	55,598
06-8064	Public Assistance Analyst 2	FT	A	GP	Anchorage	99	18N / O	12.0		88,433	0	0	51,678	140,111	71,457
06-8066	Administrative Assistant 2	FT	A	GP	Wasilla	200	14C / D	12.0		48,748	0	0	36,916	85,664	43,689
06-8067	Office Assistant 1	FT	A	GP	Fairbanks	203	8C / D	12.0		34,998	0	0	31,801	66,799	30,060
06-8068	Pb Asst Fsm 2	FT	A	SS	Kenai	200	21D / E	12.0		91,707	1,258	0	54,496	147,461	75,205
06-8073	Eligibility Technician 3	FT	A	GP	Anchorage	200	16K	12.0		69,381	0	0	44,591	113,972	52,427
06-8077	Administrative Assistant 2	FT	A	GP	Anchorage	200	14M / N	12.0		64,387	0	0	42,733	107,120	54,631
06-8079	Eligibility Technician 2	FT	A	GP	Bethel	250	14C / D	12.0		75,169	0	0	46,744	121,913	56,080
06-8081	Eligibility Office Manager 2	FT	A	SS	Anchorage	200	19K / L	12.0		89,659	1,230	0	53,734	144,623	73,758
06-8085	Eligibility Technician 2	FT	A	GP	Juneau	205	14C / D	12.0		52,449	0	0	38,292	90,741	41,741
06-8089	Eligibility Technician 2	FT	A	GP	Fairbanks	203	14C / D	12.0		50,821	0	0	37,687	88,508	40,714

Note: If a position is split, an asterisk (*) will appear in the Split/Count column. If the split position is also counted in the component, two asterisks (**) will appear in this column. [No valid job title] appearing in the Job Class Title indicates that the PCN has an invalid class code or invalid range for the class code effective date of this scenario.

Personal Services Expenditure Detail
Department of Health

Scenario: FY2023 Governor (18673)
Component: Public Assistance Field Services (236)
RDU: Public Assistance (73)

PCN	Job Class Title	Time Status	Retire Code	Barg Unit	Location	Salary Sched	Range / Step	Comp Months	Split / Count	Annual Salaries	COLA	Premium Pay	Annual Benefits	Total Costs	UGF Amount
06-8090	Eligibility Technician 2	FT	A	GP	Bethel	250	14D / E	12.0		76,867	0	0	47,376	124,243	57,152
06-8091	Eligibility Technician 2	FT	A	GP	Anchorage	200	14G	12.0		55,985	0	0	39,608	95,593	43,973
06-8098	Eligibility Technician 4	FT	A	SS	Wasilla	200	17A / B	12.0		63,461	871	0	43,989	108,321	49,828
06-8099	Eligibility Technician 3	FT	A	GP	Anchorage	200	16E / F	12.0		60,861	0	0	41,422	102,283	47,050
06-8103	Eligibility Technician 2	FT	A	GP	Wasilla	200	14B / C	12.0		47,356	0	0	36,398	83,754	38,527
06-8105	Public Assistance Analyst 2	FT	A	GP	Anchorage	200	18K / K	12.0		79,307	0	0	48,284	127,591	65,071
06-8106	Eligibility Technician 3	FT	A	GP	Homer	200	16K	12.0		69,381	0	0	44,591	113,972	52,427
06-8107	Office Assistant 2	FT	A	GP	Anchorage	200	10A / B	12.0		36,602	0	0	32,397	68,999	31,050
06-8109	Office Assistant 2	FT	A	GP	Wasilla	200	10A / B	12.0		36,251	0	0	32,267	68,518	30,833
06-8110	Office Assistant 1	FT	A	GP	Anchorage	200	8A / B	12.0		31,813	0	0	30,616	62,429	28,093
06-8111	Eligibility Technician 3	FT	A	GP	Anchorage	200	16B / C	12.0		54,929	0	0	39,215	94,144	43,306
06-8112	Office Assistant 1	FT	A	GP	Anchorage	200	8C / D	12.0		33,716	0	0	31,324	65,040	29,268
06-8113	Office Assistant 2	FT	A	GP	Anchorage	200	10C / D	12.0		38,149	0	0	32,973	71,122	32,005
06-8114	Eligibility Technician 3	FT	A	GP	Ketchikan	200	16B / C	12.0		54,538	0	0	39,069	93,607	43,059
06-8115	Eligibility Technician 3	FT	A	GP	Juneau	205	16J	12.0		70,551	0	0	45,026	115,577	53,165
06-8116	Eligibility Technician 2	FT	A	GP	Anchorage	200	14A / B	12.0		45,598	0	0	35,744	81,342	37,417
06-8117	Eligibility Technician 3	FT	A	GP	Anchorage	200	16C / D	12.0		57,579	0	0	40,201	97,780	44,979
06-8118	Eligibility Technician 3	FT	A	GP	Fairbanks	203	16G / J	12.0		67,716	0	0	43,972	111,688	51,377
06-8119	Eligibility Technician 3	FT	A	GP	Juneau	205	16G	12.0		67,743	0	0	43,982	111,725	51,394
06-8120	Eligibility Technician 3	FT	A	GP	Bethel	250	16O	12.0		118,268	0	0	62,777	181,045	83,281
06-8121	Project Assistant	FT	A	GP	Anchorage	200	16J / K	12.0		68,744	0	0	44,354	113,098	57,680
06-8124	Public Asst P/O	FT	A	SS	Anchorage	200	21D / E	12.0		89,679	1,230	0	53,742	144,651	73,772
06-8139	Eligibility Technician 2	FT	A	GP	Wasilla	200	14K	12.0		60,236	0	0	41,189	101,425	46,656
06-8140	Eligibility Technician 2	FT	A	GP	Juneau	205	14B / C	12.0		50,350	0	0	37,512	87,862	40,417
06-8141	Eligibility Technician 2	FT	A	GP	Anchorage	200	14B / C	12.0		48,146	0	0	36,692	84,838	39,026
06-8143	Office Assistant 1	FT	A	GP	Wasilla	200	8C / D	12.0		33,880	0	0	31,385	65,265	29,369
06-8145	Eligibility Technician 2	FT	A	GP	Kodiak	211	14K	12.0		66,866	0	0	43,655	110,521	50,840
06-8150	Public Assistance Analyst 1	FT	A	GP	Fairbanks	203	16C / D	12.0		59,846	0	0	41,044	100,890	51,454
06-8159	Administrative Assistant 2	FT	A	GP	Anchorage	200	14G	12.0		55,985	0	0	39,608	95,593	48,752
06-8162	Public Assistance Analyst 1	FT	A	GP	Fairbanks	203	16D / E	12.0		60,947	0	0	41,454	102,401	52,225
06-8165	Training Specialist 3	FT	A	SS	Anchorage	200	20C	12.0		80,350	1,102	0	50,272	131,724	67,179
06-8168	Eligibility Technician 3	FT	A	GP	Ketchikan	200	16M	12.0		73,964	0	0	46,296	120,260	55,320
06-8169	Eligibility Office Manager 2	FT	A	SS	Anchorage	200	19E	12.0		80,350	1,102	0	50,272	131,724	67,179
06-8171	Eligibility Technician 3	FT	A	GP	Wasilla	200	16C / D	12.0		56,162	0	0	39,674	95,836	44,085
06-8172	Eligibility Technician 4	FT	A	SS	Wasilla	200	17D / E	12.0		68,364	938	0	45,813	115,115	52,953
06-8173	Eligibility Technician 3	FT	A	GP	Anchorage	200	16J	12.0		67,197	0	0	43,779	110,976	51,049
06-8174	Eligibility Technician 2	FT	A	GP	Anchorage	200	14B / C	12.0		47,816	0	0	36,569	84,385	38,817
06-8175	Eligibility Technician 2	FT	A	GP	Wasilla	200	14E / F	12.0		52,868	0	0	38,448	91,316	42,005

Note: If a position is split, an asterisk (*) will appear in the Split/Count column. If the split position is also counted in the component, two asterisks (**) will appear in this column. [No valid job title] appearing in the Job Class Title indicates that the PCN has an invalid class code or invalid range for the class code effective date of this scenario.

Personal Services Expenditure Detail
Department of Health

Scenario: FY2023 Governor (18673)
Component: Public Assistance Field Services (236)
RDU: Public Assistance (73)

PCN	Job Class Title	Time Status	Retire Code	Barg Unit	Location	Salary Sched	Range / Step	Comp Months	Split / Count	Annual Salaries	COLA	Premium Pay	Annual Benefits	Total Costs	UGF Amount
06-8176	Eligibility Technician 2	FT	A	GP	Anchorage	200	14B / C	12.0		48,343	0	0	36,765	85,108	39,150
06-8177	Eligibility Technician 2	FT	A	GP	Anchorage	200	14K / L	12.0		60,398	0	0	41,249	101,647	46,758
06-8179	Eligibility Technician 3	FT	A	GP	Fairbanks	203	16J / K	12.0		69,300	0	0	44,561	113,861	52,376
06-8180	Eligibility Technician 4	FT	A	SS	Wasilla	200	17D / E	12.0		68,269	937	0	45,777	114,983	52,892
06-8181	Eligibility Technician 3	FT	A	GP	Kenai	200	16K / L	12.0		69,570	0	0	44,661	114,231	52,546
06-8182	Eligibility Technician 2	FT	A	GP	Fairbanks	203	14D / E	12.0		53,705	0	0	38,760	92,465	42,534
06-8184	Eligibility Technician 3	FT	A	GP	Anchorage	99	16Q / R	12.0		85,917	0	0	50,742	136,659	62,863
06-8185	Pb Asst Fsm 2	FT	A	SS	Ketchikan	200	21F	12.0		95,035	1,304	0	55,734	152,073	77,557
06-8201	Eligibility Technician 4	FT	A	SS	Wasilla	200	17A / B	12.0		62,691	860	0	43,702	107,253	49,336
06-8202	Eligibility Technician 2	FT	A	GP	Anchorage	200	14K	12.0		60,236	0	0	41,189	101,425	46,656
06-8203	Eligibility Technician 2	FT	A	GP	Fairbanks	203	14E / F	12.0		54,026	0	0	38,879	92,905	42,736
06-8204	Eligibility Technician 2	FT	A	GP	Kenai	200	14K	12.0		60,236	0	0	41,189	101,425	46,656
06-8207	Office Assistant 4	FT	A	SS	Kenai	600	12C / D	12.0		46,369	636	0	37,631	84,636	38,086
06-8208	Office Assistant 4	FT	A	SS	Fairbanks	603	12B / C	12.0		47,590	653	0	38,085	86,328	38,848
06-8210	Eligibility Technician 4	FT	A	SS	Juneau	205	17D / E	12.0		71,669	983	0	47,042	119,694	55,059
06-8219	Eligibility Technician 2	FT	A	GP	Juneau	205	14B / C	12.0		49,935	0	0	37,357	87,292	40,154
06-8228	Eligibility Technician 2	FT	A	GP	Wasilla	200	14E / F	12.0		52,380	0	0	38,267	90,647	41,698
06-8231	Eligibility Technician 2	FT	A	GP	Wasilla	200	14B / C	12.0		48,224	0	0	36,721	84,945	39,075
06-8235	Eligibility Office Manager 2	FT	A	SS	Fairbanks	203	19F	12.0		85,821	1,177	0	52,307	139,305	71,046
06-8236	Eligibility Technician 2	FT	A	GP	Fairbanks	203	14B / C	12.0		49,452	0	0	37,177	86,629	39,849
06-8237	Office Assistant 1	FT	A	GP	Wasilla	200	8B / C	12.0		32,834	0	0	30,996	63,830	28,724
06-8238	Office Assistant 1	FT	A	GP	Wasilla	200	8G / J	12.0		38,686	0	0	33,173	71,859	32,337
06-8242	Eligibility Technician 2	FT	A	GP	Anchorage	200	14G / J	12.0		56,574	0	0	39,827	96,401	44,345
06-8243	Office Assistant 2	FT	A	GG	Juneau	205	10M	12.0		50,837	0	0	37,693	88,530	39,839
06-8247	Office Assistant 4	FT	A	SS	Anchorage	600	12J / K	12.0		53,776	738	0	40,386	94,900	42,705
06-8248	Office Assistant 1	FT	A	GP	Anchorage	200	8K / L	12.0		41,470	0	0	34,208	75,678	34,055
06-8251	Eligibility Technician 2	FT	A	GP	Wasilla	200	14C / D	12.0		49,050	0	0	37,028	86,078	39,596
06-8252	Eligibility Technician 2	FT	A	GP	Ketchikan	200	14E / F	12.0		52,543	0	0	38,327	90,870	41,800
06-8253	Eligibility Technician 2	FT	A	GP	Anchorage	200	14C / D	12.0		48,748	0	0	36,916	85,664	39,405
06-8257	Eligibility Technician 2	FT	A	GP	Anchorage	200	14A / B	12.0		45,598	0	0	35,744	81,342	37,417
06-8259	Eligibility Technician 2	FT	A	GP	Anchorage	200	14F	12.0		54,249	0	0	38,962	93,211	42,877
06-8261	Eligibility Technician 2	FT	A	GP	Fairbanks	203	14B / C	12.0		49,438	0	0	37,172	86,610	39,841
06-8265	Office Assistant 4	FT	A	SS	Anchorage	600	12D / E	12.0		48,808	670	0	38,538	88,016	39,607
06-8266	Office Assistant 1	FT	A	GP	Anchorage	200	8B / C	12.0		32,667	0	0	30,933	63,600	28,620
06-8268	Office Assistant 1	FT	A	GP	Anchorage	200	8B / C	12.0		32,492	0	0	30,868	63,360	28,512
06-8269	Eligibility Technician 4	FT	A	SS	Anchorage	200	17B / C	12.0		65,423	898	0	44,719	111,040	51,078
06-8271	Office Assistant 1	FT	A	GP	Anchorage	200	8D / E	12.0		35,295	0	0	31,911	67,206	30,243
06-8272	Administrative Assistant 2	FT	A	GP	Anchorage	200	14C / D	12.0		50,410	0	0	37,534	87,944	44,851

Note: If a position is split, an asterisk (*) will appear in the Split/Count column. If the split position is also counted in the component, two asterisks (**) will appear in this column. [No valid job title] appearing in the Job Class Title indicates that the PCN has an invalid class code or invalid range for the class code effective date of this scenario.

Personal Services Expenditure Detail
Department of Health

Scenario: FY2023 Governor (18673)
Component: Public Assistance Field Services (236)
RDU: Public Assistance (73)

PCN	Job Class Title	Time Status	Retire Code	Barg Unit	Location	Salary Sched	Range / Step	Comp Months	Split / Count	Annual Salaries	COLA	Premium Pay	Annual Benefits	Total Costs	UGF Amount
06-8275	Administrative Assistant 2	FT	A	GP	Fairbanks	203	14J	12.0		60,099	0	0	41,138	101,237	51,631
06-8276	Office Assistant 2	FT	A	GP	Fairbanks	203	10F / G	12.0		43,324	0	0	34,898	78,222	35,200
06-8277	Office Assistant 2	FT	A	GP	Anchorage	200	10K	12.0		45,884	0	0	35,850	81,734	36,780
06-8278	Eligibility Technician 2	FT	A	GP	Anchorage	200	14C / D	12.0		49,805	0	0	37,309	87,114	40,072
06-8279	Office Assistant 1	FT	A	GP	Fairbanks	203	8D / E	12.0		35,875	0	0	32,127	68,002	30,601
06-8280	Office Assistant 2	FT	A	GP	Nome	237	10F / G	12.0		57,506	0	0	40,174	97,680	43,956
06-8281	Office Assistant 1	FT	A	GP	Fairbanks	203	8B / C	12.0		33,787	0	0	31,350	65,137	29,312
06-8284	Eligibility Technician 2	FT	A	GP	Wasilla	200	14E / F	12.0		52,949	0	0	38,478	91,427	42,056
06-8286	Eligibility Technician 2	FT	A	GP	Kenai	200	14L / M	12.0		63,369	0	0	42,355	105,724	48,633
06-8287	Eligibility Technician 2	FT	A	GP	Kenai	200	14M	12.0		64,214	0	0	42,669	106,883	49,166
06-8289	Office Assistant 1	FT	A	GP	Kenai	200	8C / D	12.0		34,061	0	0	31,452	65,513	29,481
06-8291	Eligibility Technician 2	FT	A	GP	Juneau	205	14B / C	12.0		50,101	0	0	37,419	87,520	40,259
06-8294	Office Assistant 2	FT	A	GP	Juneau	205	10D / E	12.0		40,971	0	0	34,023	74,994	33,747
06-8295	Eligibility Technician 2	FT	A	GP	Kenai	200	14L / M	12.0		62,777	0	0	42,134	104,911	48,259
06-8299	Eligibility Technician 2	FT	A	GP	Anchorage	200	14C / D	12.0		50,032	0	0	37,393	87,425	40,216
06-8301	Eligibility Technician 2	FT	A	GP	Anchorage	200	14D / E	12.0		51,014	0	0	37,759	88,773	40,836
06-8303	Public Assistance Analyst 2	FT	A	SS	Bethel	250	18A / B	12.0		99,089	1,360	0	57,242	157,691	80,422
06-8304	Eligibility Technician 4	FT	A	SS	Anchorage	200	17Q / R	12.0		97,763	1,341	0	56,749	155,853	71,692
06-8305	Eligibility Technician 2	FT	A	GP	Anchorage	200	14C / D	12.0		48,899	0	0	36,972	85,871	39,501
06-8307	Eligibility Technician 2	FT	A	GP	Anchorage	200	14K	12.0		60,236	0	0	41,189	101,425	46,656
06-8308	Training Specialist 2	FT	A	GP	Anchorage	200	18F / G	12.0		71,695	0	0	45,452	117,147	59,745
06-8309	Training Specialist 2	FT	A	GP	Anchorage	200	18K	12.0		79,307	0	0	48,284	127,591	65,071
06-8311	Eligibility Technician 2	FT	A	GP	Anchorage	200	14D / E	12.0		51,921	0	0	38,096	90,017	41,408
06-8315	Eligibility Technician 4	FT	A	SS	Fairbanks	203	17N / O	12.0		88,774	1,218	0	53,405	143,397	65,963
06-8316	Eligibility Technician 3	FT	A	GP	Anchorage	200	16B / C	12.0		54,321	0	0	38,989	93,310	42,923
06-8319	Eligibility Technician 3	FT	A	GP	Anchorage	99	16M / N	12.0		74,908	0	0	46,647	121,555	55,915
06-8320	Eligibility Technician 2	FT	A	GP	Kenai	200	14A / B	12.0		45,858	0	0	35,840	81,698	37,581
06-8321	Eligibility Technician 2	FT	A	GP	Kenai	200	14G / J	12.0		57,459	0	0	40,156	97,615	44,903
06-8323	Eligibility Technician 2	FT	A	GP	Bethel	250	14J / K	12.0		87,872	0	0	51,470	139,342	64,097
06-8324	Eligibility Technician 3	FT	A	GP	Ketchikan	200	16G	12.0		64,526	0	0	42,785	107,311	49,363
06-8325	Eligibility Technician 2	FT	A	GP	Ketchikan	200	14J / K	12.0		59,841	0	0	41,042	100,883	46,406
06-8326	Eligibility Technician 2	FT	A	GP	Ketchikan	200	14M	12.0		64,214	0	0	42,669	106,883	49,166
06-8329	Public Assistance Analyst 2	FT	A	GP	Anchorage	200	18K	12.0		79,307	0	0	48,284	127,591	65,071
06-8330	Office Assistant 2	FT	A	GP	Ketchikan	200	10B / E	12.0		40,053	0	0	33,681	73,734	33,180
06-8331	Eligibility Technician 4	FT	A	SS	Kenai	200	17J / K	12.0		77,524	1,064	0	49,220	127,808	58,792
06-8332	Office Assistant 4	FT	A	SS	Juneau	605	12D / E	12.0		50,482	693	0	39,161	90,336	40,651
06-8333	Eligibility Technician 2	FT	A	GP	Anchorage	200	14E / F	12.0		52,462	0	0	38,297	90,759	41,749
06-8334	Office Assistant 2	FT	A	GP	Homer	200	10E / F	12.0		40,616	0	0	33,890	74,506	33,528

Note: If a position is split, an asterisk (*) will appear in the Split/Count column. If the split position is also counted in the component, two asterisks (**) will appear in this column. [No valid job title] appearing in the Job Class Title indicates that the PCN has an invalid class code or invalid range for the class code effective date of this scenario.

Personal Services Expenditure Detail
Department of Health

Scenario: FY2023 Governor (18673)
Component: Public Assistance Field Services (236)
RDU: Public Assistance (73)

PCN	Job Class Title	Time Status	Retire Code	Barg Unit	Location	Salary Sched	Range / Step	Comp Months	Split / Count	Annual Salaries	COLA	Premium Pay	Annual Benefits	Total Costs	UGF Amount
06-8335	Office Assistant 1	FT	A	GG	Fairbanks	99	8P / Q	12.0		49,152	0	0	37,066	86,218	38,798
06-8337	Office Assistant 1	FT	A	GP	Ketchikan	200	8D / E	12.0		35,464	0	0	31,974	67,438	30,347
06-8338	Office Assistant 1	FT	A	GP	Juneau	205	8M	12.0		45,552	0	0	35,727	81,279	36,576
06-8341	Office Assistant 2	FT	A	GP	Wasilla	200	10D / E	12.0		39,205	0	0	33,366	72,571	32,657
06-8366	Office Assistant 4	FT	A	SS	Wasilla	600	12B / C	12.0		45,397	623	0	37,269	83,289	37,480
06-8368	Eligibility Technician 4	FT	A	SS	Anchorage	200	17E / F	12.0		70,469	967	0	46,596	118,032	54,295
06-8369	Office Assistant 2	FT	A	GP	Bethel	250	10K / L	12.0		70,317	0	0	44,939	115,256	51,865
06-8375	Eligibility Technician 2	FT	A	GP	Wasilla	200	14C / D	12.0		48,823	0	0	36,943	85,766	39,452
06-8378	Eligibility Technician 3	FT	A	GG	Wasilla	99	16O / P	12.0		80,594	0	0	48,762	129,356	59,504
06-8384	Eligibility Office Manager 2	FT	A	SS	Wasilla	200	19E / F	12.0		80,970	1,111	0	50,502	132,583	67,617
06-8385	Eligibility Technician 3	FT	A	GG	Anchorage	200	16N / O	12.0		78,059	0	0	47,819	125,878	57,904
06-8387	Emp Svc Tech 2	FT	A	GG	Fairbanks	203	15P / Q	12.0		79,970	0	0	48,530	128,500	0
06-8390	Office Assistant 2	FT	A	GP	Anchorage	200	10C / D	12.0		38,649	0	0	33,159	71,808	32,314
06-8392	Eligibility Technician 2	FT	A	GP	Anchorage	200	14D / E	12.0		50,939	0	0	37,731	88,670	39,015
06-8399	Public Assistance Analyst 2	FT	A	GP	Anchorage	200	18C / D	12.0		66,156	0	0	43,391	109,547	55,869
06-8403	Office Assistant 2	FT	A	GP	Kodiak	211	10D / E	12.0		43,992	0	0	35,146	79,138	35,612
06-8405	Eligibility Technician 2	FT	A	GP	Anchorage	200	14B / C	12.0		47,645	0	0	36,505	84,150	38,709
06-8408	Eligibility Technician 2	FT	A	GP	Fairbanks	203	14B / C	12.0		49,479	0	0	37,188	86,667	39,867
06-8409	Eligibility Technician 2	FT	A	GP	Anchorage	200	14G / J	12.0		56,083	0	0	39,644	95,727	44,034
06-8414	Public Assistance Analyst 1	FT	A	GP	Anchorage	200	16E / F	12.0		61,397	0	0	41,621	103,018	52,539
06-8417	Eligibility Technician 3	FT	A	GP	Kenai	200	16G	12.0		64,526	0	0	42,785	107,311	49,363
06-8419	Eligibility Technician 3	FT	A	GP	Anchorage	200	16G / J	12.0		67,197	0	0	43,779	110,976	51,049
06-8420	Eligibility Technician 2	FT	A	GP	Fairbanks	203	14E / F	12.0		53,993	0	0	38,867	92,860	42,716
06-8421	Eligibility Technician 2	FT	A	GP	Bethel	250	14B / C	12.0		71,848	0	0	45,509	117,357	53,984
06-8422	Training Specialist 2	FT	A	GP	Anchorage	200	18G / J	12.0		74,656	0	0	46,553	121,209	61,817
06-8423	Eligibility Technician 2	FT	A	GP	Wasilla	200	14B / C	12.0		47,356	0	0	36,398	83,754	38,527
06-8430	Office Assistant 1	FT	A	GP	Wasilla	200	8C / D	12.0		33,587	0	0	31,276	64,863	29,188
06-8431	Eligibility Technician 4	FT	A	SS	Anchorage	200	17J / K	12.0		76,814	1,054	0	48,956	126,824	58,339
06-8432	Eligibility Technician 3	FT	A	GP	Anchorage	200	16J / K	12.0		68,107	0	0	44,117	112,224	51,623
06-8433	Eligibility Technician 3	FT	A	GP	Anchorage	200	16G / J	12.0		65,082	0	0	42,992	108,074	49,714
06-8434	Eligibility Technician 2	FT	A	GP	Fairbanks	203	14J	12.0		60,099	0	0	41,138	101,237	46,569
06-8438	Eligibility Technician 2	FT	A	GP	Wasilla	200	14G / J	12.0		58,246	0	0	40,449	98,695	45,400
06-8441	Eligibility Technician 2	FT	A	GP	Fairbanks	203	14E / F	12.0		54,863	0	0	39,190	94,053	43,264
06-8442	Eligibility Technician 4	FT	A	SS	Fairbanks	203	17K	12.0		79,955	1,097	0	50,125	131,177	60,341
06-8445	Eligibility Technician 2	FT	A	GP	Fairbanks	203	14D / E	12.0		53,087	0	0	38,530	91,617	42,144
06-8446	Eligibility Technician 2	FT	A	GP	Fairbanks	203	14E / F	12.0		54,863	0	0	39,190	94,053	43,264
06-8449	Eligibility Technician 2	FT	A	GP	Nome	237	14G / J	12.0		77,098	0	0	47,462	124,560	57,298
06-8453	Eligibility Technician 2	FT	A	GP	Kenai	200	14G / J	12.0		57,164	0	0	40,046	97,210	44,717

Note: If a position is split, an asterisk (*) will appear in the Split/Count column. If the split position is also counted in the component, two asterisks (**) will appear in this column. [No valid job title] appearing in the Job Class Title indicates that the PCN has an invalid class code or invalid range for the class code effective date of this scenario.

Personal Services Expenditure Detail
Department of Health

Scenario: FY2023 Governor (18673)
Component: Public Assistance Field Services (236)
RDU: Public Assistance (73)

PCN	Job Class Title	Time Status	Retire Code	Barg Unit	Location	Salary Sched	Range / Step	Comp Months	Split / Count	Annual Salaries	COLA	Premium Pay	Annual Benefits	Total Costs	UGF Amount
06-8454	Office Assistant 1	FT	A	GP	Wasilla	200	8G	12.0		37,830	0	0	32,854	70,684	31,808
06-8455	Eligibility Technician 2	FT	A	GP	Juneau	205	14D / E	12.0		54,036	0	0	38,883	92,919	42,743
06-8457	Eligibility Technician 2	FT	A	GP	Wasilla	200	14F / G	12.0		55,840	0	0	39,554	95,394	43,881
06-8458	Administrative Assistant 2	FT	A	GP	Wasilla	200	14B / C	12.0		47,580	0	0	36,481	84,061	42,871
06-8459	Office Assistant 1	FT	A	GP	Wasilla	200	8D / E	12.0		35,422	0	0	31,958	67,380	30,321
06-8460	Eligibility Technician 2	FT	A	GP	Anchorage	200	14G / J	12.0		58,246	0	0	40,449	98,695	45,400
06-8462	Eligibility Technician 2	FT	A	GG	Anchorage	200	14A / B	12.0		46,625	0	0	36,126	82,751	38,066
06-8463	Eligibility Technician 4	FT	A	SS	Anchorage	200	17L / M	12.0		81,226	1,114	0	50,597	132,937	61,151
06-8465	Eligibility Technician 2	FT	A	GP	Wasilla	200	14C / D	12.0		50,032	0	0	37,393	87,425	40,216
06-8467	Office Assistant 1	FT	A	GP	Kenai	200	8D / E	12.0		34,661	0	0	31,675	66,336	29,851
06-8468	Eligibility Technician 2	FT	A	GP	Ketchikan	200	14B / C	12.0		47,751	0	0	36,545	84,296	38,776
06-8469	Eligibility Technician 2	FT	A	GP	Wasilla	200	14M / N	12.0		64,648	0	0	42,830	107,478	49,440
06-8470	Office Assistant 2	FT	A	GP	Anchorage	200	10E / F	12.0		40,309	0	0	33,776	74,085	33,338
06-8471	Eligibility Technician 2	FT	A	GP	Anchorage	200	14B / C	12.0		48,290	0	0	36,745	85,035	39,116
06-8473	Eligibility Technician 2	FT	A	GP	Kenai	200	14K	12.0		60,236	0	0	41,189	101,425	44,627
06-8475	Eligibility Technician 2	FT	A	GP	Anchorage	200	14D / E	12.0		51,392	0	0	37,899	89,291	41,074
06-8476	Office Assistant 1	FT	A	GP	Anchorage	200	8C / D	12.0		33,587	0	0	31,276	64,863	29,188
06-8479	Eligibility Technician 2	FT	A	GP	Fairbanks	203	14D / E	12.0		52,778	0	0	38,415	91,193	41,949
06-8480	Eligibility Technician 2	FT	A	GP	Fairbanks	203	14K / L	12.0		63,137	0	0	42,268	105,405	48,486
06-8483	Eligibility Technician 2	FT	A	GP	Anchorage	200	14C / D	12.0		49,881	0	0	37,337	87,218	40,120
06-8486	Eligibility Technician 2	FT	A	GP	Anchorage	200	14B / C	12.0		48,224	0	0	36,721	84,945	39,075
06-8488	Eligibility Technician 2	FT	A	GP	Wasilla	200	14B / C	12.0		48,251	0	0	36,731	84,982	39,092
06-8499	Eligibility Technician 2	FT	A	GP	Anchorage	200	14B / C	12.0		48,224	0	0	36,721	84,945	39,075
06-8500	Eligibility Technician 2	FT	A	GP	Anchorage	200	14P	12.0		70,688	0	0	45,077	115,765	53,252
06-8501	Eligibility Technician 3	FT	A	GP	Kenai	200	16J	12.0		67,197	0	0	43,779	110,976	51,049
06-8502	Eligibility Technician 2	FT	A	GP	Wasilla	200	14F / G	12.0		54,394	0	0	39,016	93,410	42,969
06-8504	Eligibility Technician 2	FT	A	GP	Juneau	205	14E / F	12.0		55,083	0	0	39,272	94,355	43,403
06-8505	Pb Asst Fsm 2	FT	A	SS	Ketchikan	200	21B / C	12.0		83,572	1,147	0	51,470	136,189	69,456
06-8506	Eligibility Technician 2	FT	A	GP	Anchorage	200	14F / G	12.0		54,611	0	0	39,097	93,708	43,106
06-8507	Eligibility Technician 4	FT	A	SS	Anchorage	200	17N / O	12.0		87,570	1,201	0	52,957	141,728	65,195
06-8508	Eligibility Technician 2	FT	A	GP	Kenai	200	14B / C	12.0		48,317	0	0	36,755	85,072	39,133
06-8509	Eligibility Technician 2	FT	A	GP	Ketchikan	200	14D / E	12.0		50,637	0	0	37,618	88,255	40,597
06-8511	Eligibility Technician 3	FT	A	GP	Anchorage	200	16E / F	12.0		62,381	0	0	41,987	104,368	48,009
06-8513	Eligibility Technician 2	FT	A	GP	Wasilla	200	14G / J	12.0		56,850	0	0	39,930	96,780	44,519
06-8514	Eligibility Technician 2	FT	A	GP	Kenai	200	14K	12.0		60,236	0	0	41,189	101,425	46,656
06-8515	Administrative Assistant 2	FT	A	GP	Wasilla	200	14B / C	12.0		47,198	0	0	36,339	83,537	42,604
06-8516	Eligibility Technician 2	FT	A	GP	Anchorage	200	14G / J	12.0		58,147	0	0	40,412	98,559	45,337
06-8519	Public Assistance Analyst 2	FT	A	GP	Anchorage	200	18F / G	12.0		71,695	0	0	45,452	117,147	59,745

Note: If a position is split, an asterisk (*) will appear in the Split/Count column. If the split position is also counted in the component, two asterisks (**) will appear in this column. [No valid job title] appearing in the Job Class Title indicates that the PCN has an invalid class code or invalid range for the class code effective date of this scenario.

Personal Services Expenditure Detail
Department of Health

Scenario: FY2023 Governor (18673)
Component: Public Assistance Field Services (236)
RDU: Public Assistance (73)

PCN	Job Class Title	Time Status	Retire Code	Barg Unit	Location	Salary Sched	Range / Step	Comp Months	Split / Count	Annual Salaries	COLA	Premium Pay	Annual Benefits	Total Costs	UGF Amount
06-8520	Eligibility Technician 2	FT	A	GP	Anchorage	200	14K	12.0		60,236	0	0	41,189	101,425	46,656
06-8521	Eligibility Technician 3	FT	A	GP	Anchorage	200	16M	12.0		73,964	0	0	46,296	120,260	55,320
06-8528	Eligibility Technician 2	FT	A	GP	Wasilla	200	14E / F	12.0		52,705	0	0	38,388	91,093	40,081
06-8533	Public Assistance Analyst 2	FT	A	GP	Anchorage	200	18N / O	12.0		88,154	0	0	51,575	139,729	71,262
06-8535	Public Assistance Analyst 1	FT	A	GP	Anchorage	200	16M	12.0		73,964	0	0	46,296	120,260	61,333
06-8540	Eligibility Technician 2	FT	A	GP	Anchorage	200	14J / K	12.0		60,078	0	0	41,130	101,208	46,556
06-8546	Eligibility Technician 3	FT	A	GP	Anchorage	200	16K	12.0		69,381	0	0	44,591	113,972	52,427
06-8547	Eligibility Technician 2	FT	A	GP	Fairbanks	203	14C / D	12.0		50,291	0	0	37,490	87,781	40,379
06-8548	Emp Svc Tech 2	FT	A	GP	Fairbanks	203	15E / F	12.0		58,462	0	0	40,529	98,991	0
06-8554	Public Asst P/O	FT	A	SS	Anchorage	200	21F / J	12.0		96,959	1,330	0	56,450	154,739	78,917
06-8556	Eligibility Technician 2	FT	A	GP	Anchorage	200	14E / F	12.0		54,168	0	0	38,932	93,100	42,826
06-8557	Eligibility Technician 3	FT	A	GP	Anchorage	200	16C / D	12.0		56,427	0	0	39,772	96,199	44,252
06-8558	Eligibility Technician 2	FT	A	GP	Fairbanks	203	14G / J	12.0		58,372	0	0	40,496	98,868	45,479
06-8559	Eligibility Technician 2	FT	A	GP	Anchorage	200	14D / E	12.0		51,770	0	0	38,040	89,810	41,313
06-8560	Eligibility Technician 2	FT	A	GP	Fairbanks	203	14C / D	12.0		51,851	0	0	38,070	89,921	41,364
06-8562	Eligibility Technician 2	FT	A	GP	Kenai	200	14G	12.0		55,985	0	0	39,608	95,593	43,973
06-8564	Eligibility Technician 2	FT	A	GP	Wasilla	200	14L	12.0		62,186	0	0	41,915	104,101	47,887
06-8566	Eligibility Technician 3	FT	A	GP	Fairbanks	203	16L / M	12.0		74,887	0	0	46,639	121,526	55,902
06-8568	Emp Svc Tech 2	FT	A	GG	Fairbanks	203	15N / O	12.0		78,636	0	0	48,034	126,670	0
06-8569	Eligibility Technician 2	FT	A	GP	Juneau	205	14B / C	12.0		50,156	0	0	37,439	87,595	40,294
06-8570	Eligibility Technician 2	FT	A	GP	Ketchikan	200	14G	12.0		55,985	0	0	39,608	95,593	43,973
06-8571	Eligibility Technician 2	FT	A	GP	Wasilla	200	14G / J	12.0		57,263	0	0	40,083	97,346	44,779
06-8580	Public Assistance Analyst 1	FT	A	GP	Anchorage	200	16G	12.0		64,526	0	0	42,785	107,311	54,729
06-8582	Program Manager	FT	A	SS	Wasilla	200	22F	12.0		101,650	1,395	0	58,195	161,240	83,845
06-8583	Eligibility Technician 2	FT	A	GP	Anchorage	200	14J / K	12.0		59,684	0	0	40,984	100,668	46,307
06-8584	Eligibility Technician 2	FT	A	GP	Bethel	250	14F / G	12.0		82,245	0	0	49,376	131,621	60,546
06-8585	Eligibility Technician 2	FT	A	GP	Wasilla	200	14K	12.0		60,236	0	0	41,189	101,425	46,656
06-8586	Eligibility Technician 3	FT	A	GP	Anchorage	200	16B / C	12.0		54,596	0	0	39,091	93,687	43,096
06-8592	Public Assistance Analyst 2	FT	A	GP	Anchorage	200	18E / F	12.0		71,081	0	0	45,223	116,304	59,315
06-8593	Office Assistant 1	FT	A	GP	Fairbanks	203	8D / E	12.0		36,446	0	0	32,339	68,785	30,953
06-8594	Administrative Assistant 2	FT	A	GP	Anchorage	200	14D / E	12.0		51,150	0	0	37,809	88,959	45,369
06-8600	Eligibility Technician 4	FT	A	SS	Anchorage	200	17D / E	12.0		70,176	963	0	46,487	117,626	54,108
06-8601	Office Assistant 1	FT	A	GP	Anchorage	200	8C / D	12.0		33,570	0	0	31,269	64,839	29,178
06-8605	Eligibility Technician 2	FT	A	GP	Anchorage	200	14D / E	12.0		52,223	0	0	38,208	90,431	41,598
06-8608	Eligibility Technician 2	FT	A	GP	Anchorage	200	14D / E	12.0		52,223	0	0	38,208	90,431	41,598
06-8610	Eligibility Technician 2	FT	A	GP	Anchorage	200	14D / E	12.0		50,939	0	0	37,731	88,670	40,788
06-8611	Eligibility Technician 3	FT	A	GP	Anchorage	200	16D / E	12.0		59,616	0	0	40,958	100,574	46,264
06-8612	Eligibility Office Manager 2	FT	A	SS	Anchorage	200	19M	12.0		94,682	1,299	0	55,603	151,584	77,308

Note: If a position is split, an asterisk (*) will appear in the Split/Count column. If the split position is also counted in the component, two asterisks (**) will appear in this column. [No valid job title] appearing in the Job Class Title indicates that the PCN has an invalid class code or invalid range for the class code effective date of this scenario.

Personal Services Expenditure Detail
Department of Health

Scenario: FY2023 Governor (18673)
Component: Public Assistance Field Services (236)
RDU: Public Assistance (73)

PCN	Job Class Title	Time Status	Retire Code	Barg Unit	Location	Salary Sched	Range / Step	Comp Months	Split / Count	Annual Salaries	COLA	Premium Pay	Annual Benefits	Total Costs	UGF Amount
06-8613	Training Specialist 2	FT	A	GP	Anchorage	200	18D / E	12.0		67,483	0	0	43,885	111,368	56,798
06-8617	Eligibility Technician 2	FT	A	GP	Anchorage	200	14F / G	12.0		54,885	0	0	39,199	94,084	43,279
06-8618	Eligibility Technician 2	FT	A	GP	Wasilla	200	14C / D	12.0		50,259	0	0	37,478	87,737	40,359
06-8619	Office Assistant 1	FT	A	GP	Anchorage	200	8E / F	12.0		36,207	0	0	32,250	68,457	30,806
06-8627	Eligibility Technician 2	FT	A	GP	Anchorage	200	14E / F	12.0		52,868	0	0	38,448	91,316	42,005
06-8628	Eligibility Technician 2	FT	A	GP	Anchorage	200	14K / L	12.0		60,804	0	0	41,400	102,204	47,014
06-8630	Eligibility Technician 3	FT	A	GP	Wasilla	200	16G / J	12.0		66,084	0	0	43,365	109,449	50,347
06-8631	Eligibility Technician 2	FT	A	GP	Wasilla	200	14B / C	12.0		47,356	0	0	36,398	83,754	38,527
06-8633	Office Assistant 1	FT	A	GP	Wasilla	200	8D / E	12.0		34,746	0	0	31,707	66,453	29,904
06-8641	Eligibility Technician 2	FT	A	GP	Wasilla	200	14C / D	12.0		50,108	0	0	37,421	87,529	40,263
06-8642	Eligibility Technician 2	FT	A	GP	Wasilla	200	14C / D	12.0		50,032	0	0	37,393	87,425	40,216
06-8646	Emp Svc Tech 2	FT	A	GP	Fairbanks	203	15J / K	12.0		64,673	0	0	42,840	107,513	0
06-8647	Eligibility Technician 3	FT	A	GP	Anchorage	200	16D / E	12.0		58,376	0	0	40,497	98,873	45,482
06-8649	Office Assistant 1	FT	A	GP	Wasilla	200	8D / E	12.0		34,661	0	0	31,675	66,336	29,851
06-8650	Office Assistant 4	FT	A	SS	Anchorage	600	12F	12.0		50,918	699	0	39,323	90,940	40,923
06-8651	Eligibility Technician 3	FT	A	GP	Anchorage	200	16G	12.0		64,526	0	0	42,785	107,311	49,363
06-8653	Eligibility Technician 2	FT	A	GP	Kenai	200	14B / C	12.0		47,645	0	0	36,505	84,150	38,709
06-8655	Eligibility Technician 2	FT	A	GP	Ketchikan	200	14G	12.0		55,985	0	0	39,608	95,593	43,973
06-8656	Eligibility Technician 2	FT	A	GP	Ketchikan	200	14B / C	12.0		47,830	0	0	36,574	84,404	38,826
06-8657	Eligibility Technician 2	FT	A	GP	Ketchikan	200	14J / K	12.0		58,580	0	0	40,573	99,153	45,610
06-8660	Eligibility Technician 2	FT	A	GP	Anchorage	200	14G / J	12.0		57,164	0	0	40,046	97,210	44,717
06-8661	Eligibility Technician 4	FT	A	SS	Juneau	205	17L	12.0		84,157	1,155	0	51,688	137,000	63,020
06-8662	Office Assistant 2	FT	A	GP	Wasilla	200	10F / G	12.0		41,512	0	0	34,224	75,736	34,081
06-8664	Office Assistant 2	FT	A	GP	Wasilla	200	10D / E	12.0		39,205	0	0	33,366	72,571	32,657
06-8665	Office Assistant 2	FT	A	GP	Wasilla	200	10B / C	12.0		37,390	0	0	32,690	70,080	31,536
06-8666	Eligibility Technician 2	FT	A	GP	Wasilla	200	14D / E	12.0		51,317	0	0	37,871	89,188	41,027
06-8667	Eligibility Technician 4	FT	A	SS	Kenai	200	17D / E	12.0		70,366	965	0	46,557	117,888	54,229
06-8668	Eligibility Technician 4	FT	A	SS	Homer	200	17E / F	12.0		70,571	968	0	46,634	118,173	54,360
06-8669	Eligibility Technician 3	FT	A	GP	Wasilla	200	16J / K	12.0		68,380	0	0	44,219	112,599	51,796
06-8670	Eligibility Technician 2	FT	A	GP	Homer	200	14B / C	12.0		47,343	0	0	36,393	83,736	38,519
06-8671	Eligibility Technician 2	FT	A	GP	Kodiak	211	14D / E	12.0		57,633	0	0	40,221	97,854	45,013
06-8672	Eligibility Technician 2	FT	A	GP	Wasilla	200	14B / C	12.0		47,343	0	0	36,393	83,736	38,519
06-8673	Eligibility Technician 2	FT	A	GP	Wasilla	200	14G	12.0		55,985	0	0	39,608	95,593	43,973
06-8674	Eligibility Technician 2	FT	A	GP	Wasilla	200	14D / E	12.0		51,241	0	0	37,843	89,084	40,979
06-8677	Eligibility Technician 2	FT	A	GP	Wasilla	200	14B / C	12.0		47,356	0	0	36,398	83,754	38,527
06-8678	Eligibility Technician 2	FT	A	GP	Wasilla	200	14D / E	12.0		50,939	0	0	37,731	88,670	40,788
06-8679	Eligibility Technician 3	FT	A	GP	Wasilla	200	16G / J	12.0		65,149	0	0	43,017	108,166	49,756
06-8680	Eligibility Technician 2	FT	A	GP	Wasilla	200	14C / D	12.0		49,805	0	0	37,309	87,114	40,072

Note: If a position is split, an asterisk (*) will appear in the Split/Count column. If the split position is also counted in the component, two asterisks (**) will appear in this column. [No valid job title] appearing in the Job Class Title indicates that the PCN has an invalid class code or invalid range for the class code effective date of this scenario.

Personal Services Expenditure Detail
Department of Health

Scenario: FY2023 Governor (18673)
Component: Public Assistance Field Services (236)
RDU: Public Assistance (73)

PCN	Job Class Title	Time Status	Retire Code	Barg Unit	Location	Salary Sched	Range / Step	Comp Months	Split / Count	Annual Salaries	COLA	Premium Pay	Annual Benefits	Total Costs	UGF Amount
06-8681	Eligibility Technician 3	FT	A	GG	Wasilla	200	16O / P	12.0		79,537	0	0	48,369	127,906	58,837
06-8689	Office Assistant 2	FT	A	GP	Anchorage	200	10C / D	12.0		38,786	0	0	33,210	71,996	32,398
06-8690	Office Assistant 2	FT	A	GP	Anchorage	200	10C / D	12.0		38,085	0	0	32,949	71,034	31,965
06-8692	Office Assistant 2	FT	A	GP	Anchorage	200	10B / C	12.0		37,676	0	0	32,797	70,473	31,713
06-8693	Office Assistant 2	FT	A	GP	Anchorage	200	10B / C	12.0		37,748	0	0	32,824	70,572	31,757
06-8696	Eligibility Technician 3	FT	A	GP	Wasilla	200	16J / K	12.0		67,634	0	0	43,941	111,575	51,325
06-8697	Eligibility Technician 3	FT	A	GP	Wasilla	200	16B / C	12.0		54,596	0	0	39,091	93,687	43,096
06-8698	Eligibility Technician 3	FT	A	GP	Wasilla	200	16B / C	12.0		54,596	0	0	39,091	93,687	43,096
06-8699	Eligibility Technician 3	FT	A	GP	Kenai	200	16B / C	12.0		54,524	0	0	39,064	93,588	43,051
06-8700	Eligibility Technician 4	FT	A	SS	Wasilla	200	17C / D	12.0		65,962	905	0	44,919	111,786	51,422
06-8702	Eligibility Technician 4	FT	A	SS	Ketchikan	200	17F	12.0		72,821	999	0	47,471	121,291	55,794
07-5202	Emp Svc Tech 2	FT	A	GP	Wasilla	200	15G / J	12.0		60,545	0	0	41,304	101,849	0
07-5205	Emp Svc Tech 2	FT	A	GP	Wasilla	200	15B / C	12.0		50,984	0	0	37,747	88,731	0
07-5216	Emp Svc Tech 2	FT	A	GP	Fairbanks	203	15C / D	12.0		55,282	0	0	39,346	94,628	0
07-5234	Emp Svc Tech 3	FT	A	SS	Fairbanks	203	16K	12.0		74,755	1,026	0	48,190	123,971	0
07-5268	Emp Svc Tech 2	FT	A	GP	Wasilla	200	15P	12.0		75,992	0	0	47,050	123,042	0
07-5365	Emp Svc Tech 2	FT	A	GP	Wasilla	200	15E / F	12.0		56,427	0	0	39,772	96,199	0
07-5421	Emp Svc Tech 2	FT	A	GP	Juneau	205	15A / B	12.0		52,213	0	0	38,205	90,418	0
07-5434	Emp Svc Tech 2	FT	A	GP	Ketchikan	200	15M	12.0		69,030	0	0	44,460	113,490	0
07-5530	Emp Svc Tech 3	FT	A	SS	Wasilla	200	16C / D	12.0		62,114	852	0	43,488	106,454	0
07-5591	Public Asst P/O	FT	A	SS	Anchorage	200	21K / L	12.0		103,350	1,418	0	58,828	163,596	83,434
07-5789	Emp Svc Tech 2	FT	A	GP	Wasilla	200	15D / E	12.0		54,683	0	0	39,123	93,806	0
07-5830	Emp Svc Tech 2	FT	A	GP	Fairbanks	203	15B / C	12.0		52,470	0	0	38,300	90,770	0
07-5971	Emp Svc Tech 2	FT	A	GP	Nome	237	15K / L	12.0		90,529	0	0	52,458	142,987	0
07-5972	Emp Svc Tech 2	FT	A	GP	Nome	237	15M	12.0		94,575	0	0	53,963	148,538	0
07-5973	Emp Svc Tech 2	FT	A	GP	Nome	237	15L	12.0		91,611	0	0	52,861	144,472	0
07-5974	Emp Svc Tech 2	FT	A	GP	Fairbanks	203	15L / M	12.0		68,733	0	0	44,350	113,083	0
07-5976	Emp Svc Tech 2	FT	A	GP	Wasilla	200	15F / G	12.0		58,464	0	0	40,530	98,994	0
07-5977	Emp Svc Tech 3	FT	A	SS	Kenai	200	16K	12.0		72,571	996	0	47,378	120,945	0
07-5979	Eligibility Technician 4	FT	A	SS	Kenai	200	17A / B	12.0		63,461	871	0	43,989	108,321	49,828
07-5980	Emp Svc Tech 2	FT	A	GP	Kenai	200	15C / D	12.0		53,599	0	0	38,720	92,319	0
07-5981	Emp Svc Tech 2	FT	A	GP	Kenai	200	15B / C	12.0		51,014	0	0	37,759	88,773	0
07-5982	Emp Svc Tech 2	FT	A	GP	Kenai	200	15F / G	12.0		59,970	0	0	41,090	101,060	0
07-5983	Emp Svc Tech 2	FT	A	GP	Homer	200	15D / E	12.0		55,985	0	0	39,608	95,593	0
07-5999	Emp Svc Tech 2	FT	A	GP	Wasilla	200	15M	12.0		69,030	0	0	44,460	113,490	0
07-6000	Eligibility Technician 2	FT	A	GP	Anchorage	200	14C / D	12.0		49,428	0	0	37,169	86,597	39,835
07-6029	Emp Svc Tech 2	FT	A	GG	Fairbanks	203	15O	12.0		75,036	0	0	46,695	121,731	0
21-3046	Emp Svc Tech 2	FT	A	GP	Fairbanks	203	15K / L	12.0		67,341	0	0	43,832	111,173	0

Note: If a position is split, an asterisk (*) will appear in the Split/Count column. If the split position is also counted in the component, two asterisks (**) will appear in this column. [No valid job title] appearing in the Job Class Title indicates that the PCN has an invalid class code or invalid range for the class code effective date of this scenario.

Personal Services Expenditure Detail
Department of Health

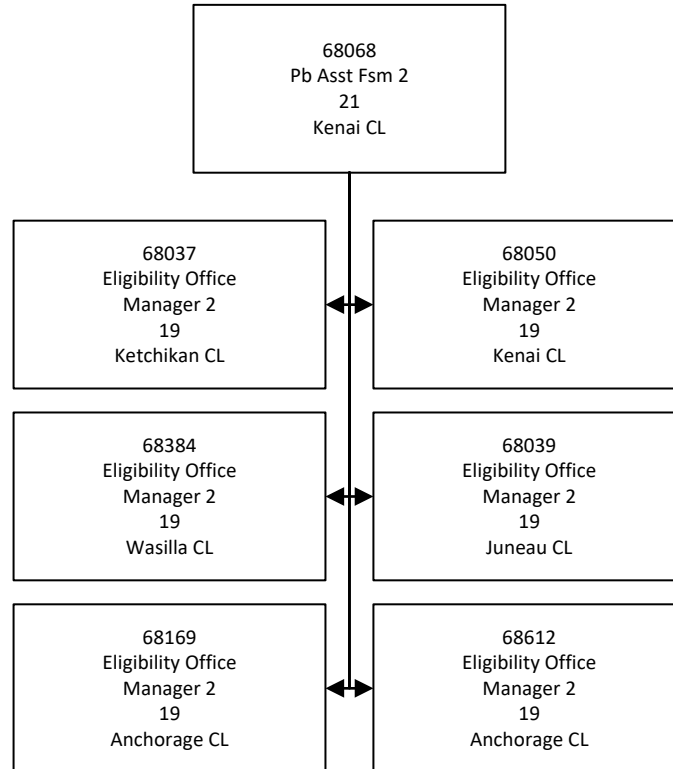
Scenario: FY2023 Governor (18673)
Component: Public Assistance Field Services (236)
RDU: Public Assistance (73)

PCN	Job Class Title	Time Status	Retire Code	Barg Unit	Location	Salary Sched	Range / Step	Comp Months	Split / Count	Annual Salaries	COLA	Premium Pay	Annual Benefits	Total Costs	UGF Amount
		Total Positions	New	Deleted										Total Salary Costs:	20,310,959
														Total COLA:	55,366
	Full Time Positions:	342	0	0										Total Premium Pay:	0
	Part Time Positions:	0	0	0										Total Benefits:	14,065,297
	Non Permanent Positions:	0	0	0											
	Positions in Component:	342	0	0											
	Total Component Months:	4,104.0													
														Total Pre-Vacancy:	34,431,622
														Minus Vacancy Adjustment of 1.03%:	(353,422)
														Total Post-Vacancy:	34,078,200
														Plus Lump Sum Premium Pay:	0
														Personal Services Line 100:	34,078,200

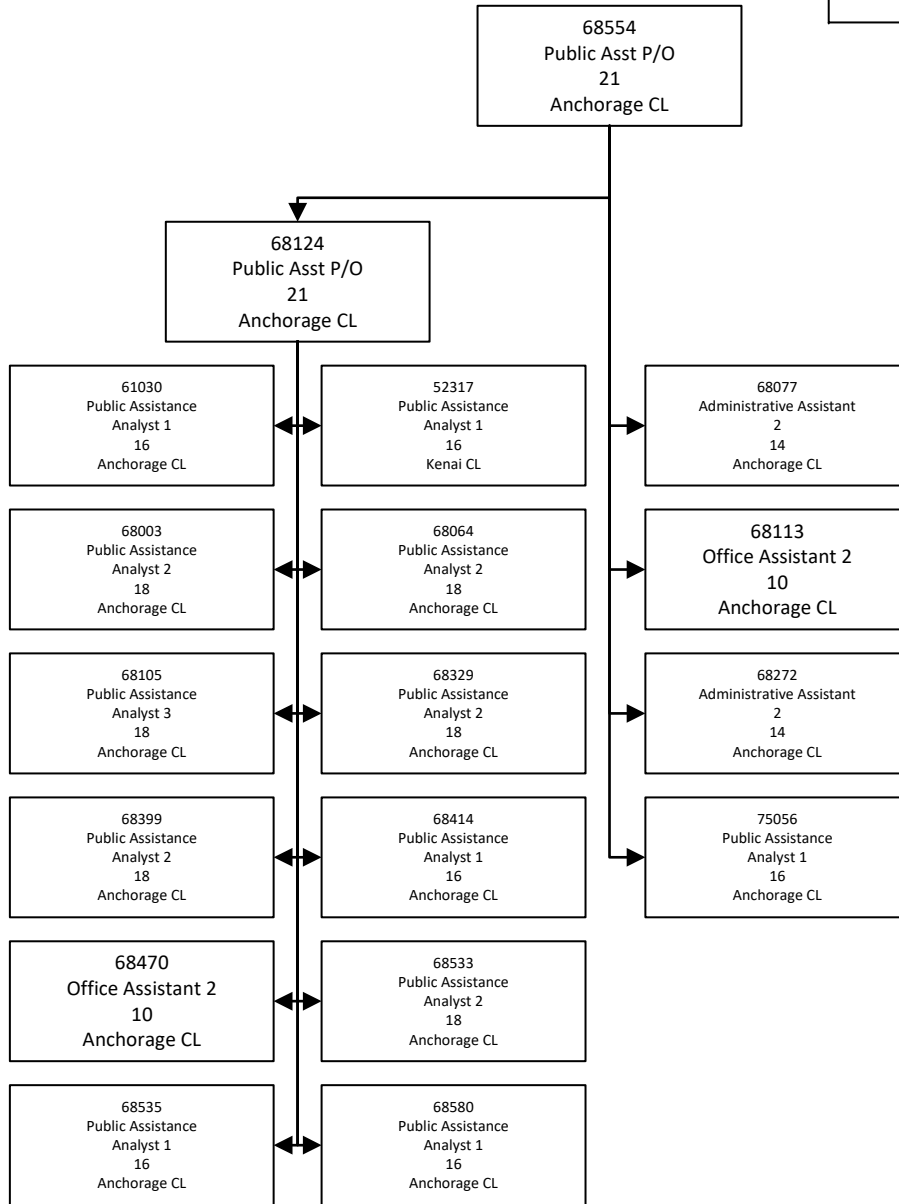
PCN Funding Sources:	Pre-Vacancy	Post-Vacancy	Percent
1002 Federal Receipts	18,537,875	18,347,594	53.84%
1003 General Fund Match	14,582,391	14,432,711	42.35%
1007 Interagency Receipts	1,311,356	1,297,896	3.81%
Total PCN Funding:	34,431,622	34,078,200	100.00%

Note: If a position is split, an asterisk (*) will appear in the Split/Count column. If the split position is also counted in the component, two asterisks (**) will appear in this column. [No valid job title] appearing in the Job Class Title indicates that the PCN has an invalid class code or invalid range for the class code effective date of this scenario.

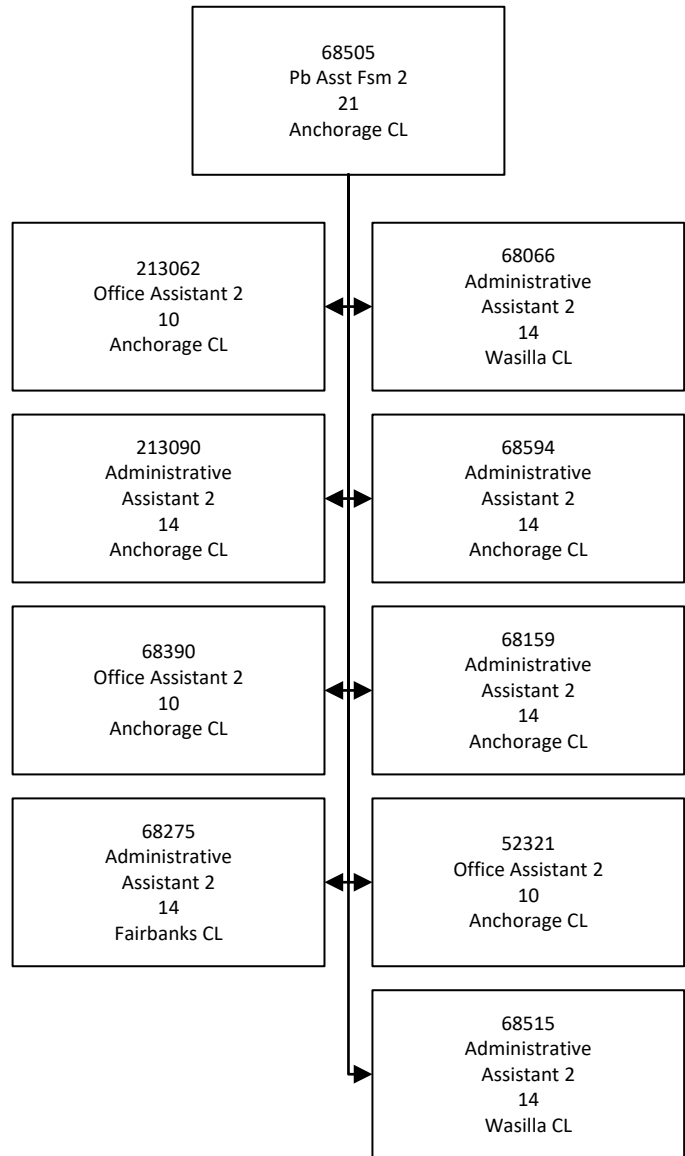
DEPARTMENT OF HEALTH
Division of Public Assistance
Public Assistance Field Services Support



DEPARTMENT OF HEALTH
 Division of Public Assistance
 Public Assistance Field Services Support



DEPARTMENT OF HEALTH
Division of Public Assistance
Public Assistance Workforce & Staffing



DEPARTMENT OF HEALTH
Division of Public Assistance
Public Assistance Statewide Clerical

68050
Eligibility Office
Manager 2
19
Kenai CL

68207
Office Assistant 4
12
Kenai CL

68208
Office Assistant 4
12
Fairbanks CL

68247
Office Assistant 4
12
Anchorage CL

68265
Office Assistant 4
12
Anchorage CL

68332
Office Assistant 4
12
Juneau CL

68650
Office Assistant 4
12
Anchorage CL

68276
Office Assistant 2
10
Fairbanks CL

68067
Office Assistant 1
8
Fairbanks CL

68277
Office Assistant 2
10
Anchorage CL

68238
Office Assistant 1
8
Wasilla CL

68109
Office Assistant 2
10
Wasilla CL

68049
Office Assistant 2
10
Sitka CL

68281
Office Assistant 1
8
Fairbanks CL

68243
Office Assistant 2
10
Juneau CL

68335
Office Assistant 1
8
Fairbanks CL

68280
Office Assistant 2
10
Nome CL

68143
Office Assistant 1
8
Wasilla CL

68248
Office Assistant 1
8
Anchorage CL

68337
Office Assistant 1
8
Ketchikan CL

68279
Office Assistant 1
8
Fairbanks CL

68430
Office Assistant 1
8
Wasilla CL

68369
Office Assistant 2
10
Bethel CL

68237
Office Assistant 1
8
Wasilla CL

68271
Office Assistant 1
8
Anchorage CL

68459
Office Assistant 1
8
Wasilla CL

68294
Office Assistant 2
10
Juneau CL

68476
Office Assistant 1
8
Anchorage CL

68403
Office Assistant 2
10
Kodiak CL

68341
Office Assistant 2
10
Wasilla CL

68334
Office Assistant 2
10
Homer CL

68692
Office Assistant 2
10
Anchorage CL

68454
Office Assistant 1
8
Wasilla CL

68601
Office Assistant 1
8
Anchorage CL

68593
Office Assistant 1
8
Fairbanks CL

68633
Office Assistant 1
8
Wasilla CL

68338
Office Assistant 1
8
Juneau CL

68665
Office Assistant 2
10
Wasilla CL

68662
Office Assistant 2
10
Wasilla CL

68649
Office Assistant 1
8
Wasilla CL

68467
Office Assistant 1
8
Kenai CL

68693
Office Assistant 2
10
Anchorage CL

68689
Office Assistant 2
10
Anchorage CL

DEPARTMENT OF HEALTH
Division of Public Assistance
Public Assistance Field Services Support

68169
Eligibility Office Manager
2
19
Anchorage CL

68040
Eligibility Technician 4
17
Fairbanks CL

68201
Eligibility Technician 4
17
Wasilla CL

68269
Eligibility Technician 4
17
Anchorage CL

68304
Eligibility Technician 4
17
Anchorage CL

68119
Eligibility Technician 3
16
Juneau CL

68251
Eligibility Technician 2
14
Wasilla CL

68278
Eligibility Technician 2
14
Anchorage CL

68299
Eligibility Technician 2
14
Anchorage CL

68558
Eligibility Technician 2
14
Fairbanks CL

68562
Eligibility Technician 2
14
Kenai CL

68171
Eligibility Technician 3
16
Wasilla CL

68307
Eligibility Technician 2
14
Anchorage CL

68446
Eligibility Technician 2
14
Fairbanks CL

68608
Eligibility Technician 2
14
Anchorage CL

68666
Eligibility Technician 2
14
Wasilla CL

68099
Eligibility Technician 3
16
Anchorage CL

68141
Eligibility Technician 2
14
Anchorage CL

68295
Eligibility Technician 2
14
Kenai CL

68483
Eligibility Technician 2
14
Anchorage CL

68500
Eligibility Technician 2
14
Anchorage CL

68506
Eligibility Technician 2
14
Anchorage CL

68660
Eligibility Technician 2
14
Anchorage CL

68091
Eligibility Technician 2
14
Anchorage CL

68111
Eligibility Technician 3
16
Anchorage CL

68242
Eligibility Technician 2
14
Anchorage CL

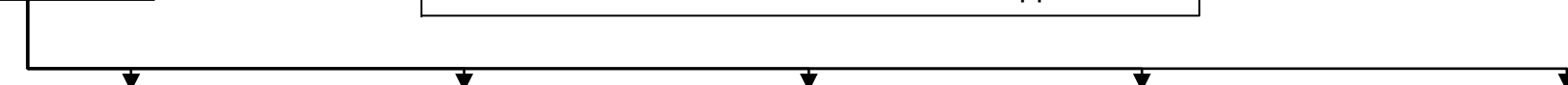
68514
Eligibility Technician 2
14
Kenai CL

68627
Eligibility Technician 2
14
Anchorage CL

68628
Eligibility Technician 2
14
Anchorage CL

DEPARTMENT OF HEALTH
Division of Public Assistance
Public Assistance Field Services Support

68037
 Eligibility Office
 Manager 2
 19
 Ketchikan CL



68172
 Eligibility Technician 4
 17
 Wasilla CL

68180
 Eligibility Technician 4
 17
 Wasilla CL

68210
 Eligibility Technician 4
 17
 Juneau CL

68368
 Eligibility Technician 4
 17
 Anchorage CL

68667
 Eligibility Technician 4
 17
 Kenai CL

68054
 Eligibility Technician 2
 14
 Kenai CL

68168
 Eligibility Technician 3
 16
 Ketchikan CL

68035
 Eligibility Technician 2
 14
 Sitka CL

68085
 Eligibility Technician 2
 14
 Juneau CL

68140
 Eligibility Technician 2
 14
 Juneau CL

68173
 Eligibility Technician 3
 16
 Anchorage CL

68252
 Eligibility Technician 2
 14
 Ketchikan CL

68284
 Eligibility Technician 2
 14
 Wasilla CL

68079
 Eligibility Technician 2
 14
 Bethel CL

68181
 Eligibility Technician 3
 16
 Kenai CL

68253
 Eligibility Technician 2
 14
 Anchorage CL

68301
 Eligibility Technician 2
 14
 Anchorage CL

68325
 Eligibility Technician 2
 14
 Ketchikan CL

68090
 Eligibility Technician 2
 14
 Bethel CL

68182
 Eligibility Technician 2
 14
 Fairbanks CL

68434
 Eligibility Technician 2
 14
 Fairbanks CL

68326
 Eligibility Technician 2
 14
 Ketchikan CL

68479
 Eligibility Technician 2
 14
 Fairbanks CL

68120
 Eligibility Technician 3
 16
 Bethel CL

68231
 Eligibility Technician 2
 14
 Wasilla CL

68471
 Eligibility Technician 2
 14
 Anchorage CL

68605
 Eligibility Technician 2
 14
 Anchorage CL

68202
 Eligibility Technician 2
 14
 Anchorage CL

68455
 Eligibility Technician 2
 14
 Juneau CL

68499
 Eligibility Technician 2
 14
 Anchoage CL

68204
 Eligibility Technician 2
 14
 Kenai CL

68618
 Eligibility Technician 2
 14
 Wasilla CL

68521
 Eligibility Technician 3
 16
 Anchorage CL

68570
 Eligibility Technician 2
 14
 Ketchikan CL

68642
 Eligibility Technician 2
 14
 Wasilla CL

68680
 Eligibility Technician 2
 14
 Wasilla CL

68678
 Eligibility Technician 2
 14
 Wasilla CL

68257
 Eligibility Technician 2
 16
 Anchorage CL



DEPARTMENT OF HEALTH
Division of Public Assistance
Public Assistance Field Services Support

68039
Eligibility Office
Manager 2
19
Juneau CL

68063
Eligibility Technician 4
17
Ketchikan CL

68098
Eligibility Technician 4
17
Wasilla CL

68507
Eligibility Technician 4
17
Anchorage CL

68668
Eligibility Technician 4
17
Homer CL

68433
Eligibility Technician 3
16
Anchorage CL

68089
Eligibility Technician 2
14
Fairbanks CL

68465
Eligibility Technician 2
14
Wasilla CL

68547
Eligibility Technician 2
14
Fairbanks CL

68556
Eligibility Technician 2
14
Anchorage CL

68583
Eligibility Technician 2
14
Anchorage CL

68657
Eligibility Technician 2
14
Ketchikan CL

68073
Eligibility Technician 3
16
Anchorage CL

68333
Eligibility Technician 2
14
Anchorage CL

68375
Eligibility Technician 2
14
Wasilla CL

68409
Eligibility Technician 2
14
Anchorage CL

68617
Eligibility Technician 2
14
Anchorage CL

68641
Eligibility Technician 2
14
Wasilla CL

68174
Eligibility Technician 2
14
Anchorage CL

64938
Eligibility Technician 2
14
Anchorage CL

68034
Eligibility Technician 2
14
Nome CL

68060
Eligibility Technician 3
16
Anchorage CL

68305
Eligibility Technician 2
14
Anchorage CL

68145
Eligibility Technician 2
14
Kodiak CL

68449
Eligibility Technician 2
14
Nome CL

68259
Eligibility Technician 2
14
Anchorage CL

68671
Eligibility Technician 2
14
Kodiak CL

68106
Eligibility Technician 3
16
Homer CL

68560
Eligibility Technician 2
14
Fairbanks CL

68323
Eligibility Technician 2
14
Bethel CL

68559
Eligibility Technician 2
14
Anchorage CL

68438
Eligibility Technician 2
14
Wasilla CL

68475
Eligibility Technician 2
14
Anchorage CL

68480
Eligibility Technician 2
14
Fairbanks CL

DEPARTMENT OF HEALTH
Division of Public Assistance
Public Assistance Field Services Support

68612
Eligibility Office
Manager 2
19
Anchorage CL

68442
Eligibility Technician 4
17
Fairbanks CL

68661
Eligibility Technician 4
17
Juneau CL

68702
Eligibility Technician 4
17
Ketchikan CL

75979
Eligibility Technician 4
17
Kenai CL

68175
Eligibility Technician 2
14
Wasilla CL

68321
Eligibility Technician 2
14
Kenai CL

68419
Eligibility Technician 3
16
Anchorage CL

68457
Eligibility Technician 2
14
Wasilla CL

68469
Eligibility Technician 2
14
Wasilla CL

68571
Eligibility Technician 2
14
Wasilla CL

68540
Eligibility Technician 2
14
Anchorage CL

68116
Eligibility Technician 2
14
Anchorage CL

68051
Eligibility Technician 2
14
Fairbanks CL

68378
Eligibility Technician 3
16
Wasilla CL

68504
Eligibility Technician 2
14
Juneau CL

68513
Eligibility Technician 2
14
Wasilla CL

68673
Eligibility Technician 2
14
Wasilla CL

68674
Eligibility Technician 2
14
Wasilla CL

68392
Eligibility Technician 2
14
Anchorage CL

68177
Eligibility Technician 2
14
Anchorage CL

68453
Eligibility Technician 2
14
Kenai CL

68460
Eligibility Technician 2
14
Anchorage CL

68501
Eligibility Technician 3
16
Kenai CL

68502
Eligibility Technician 2
14
Wasilla CL

68585
Eligibility Technician 2
14
Wasilla CL

68655
Eligibility Technician 2
14
Ketchikan CL

68528
Eligibility Technician 2
14
Wasilla CL

68286
Eligibility Technician 2
14
Kenai CL

68564
Eligibility Technician 2
14
Wasilla CL

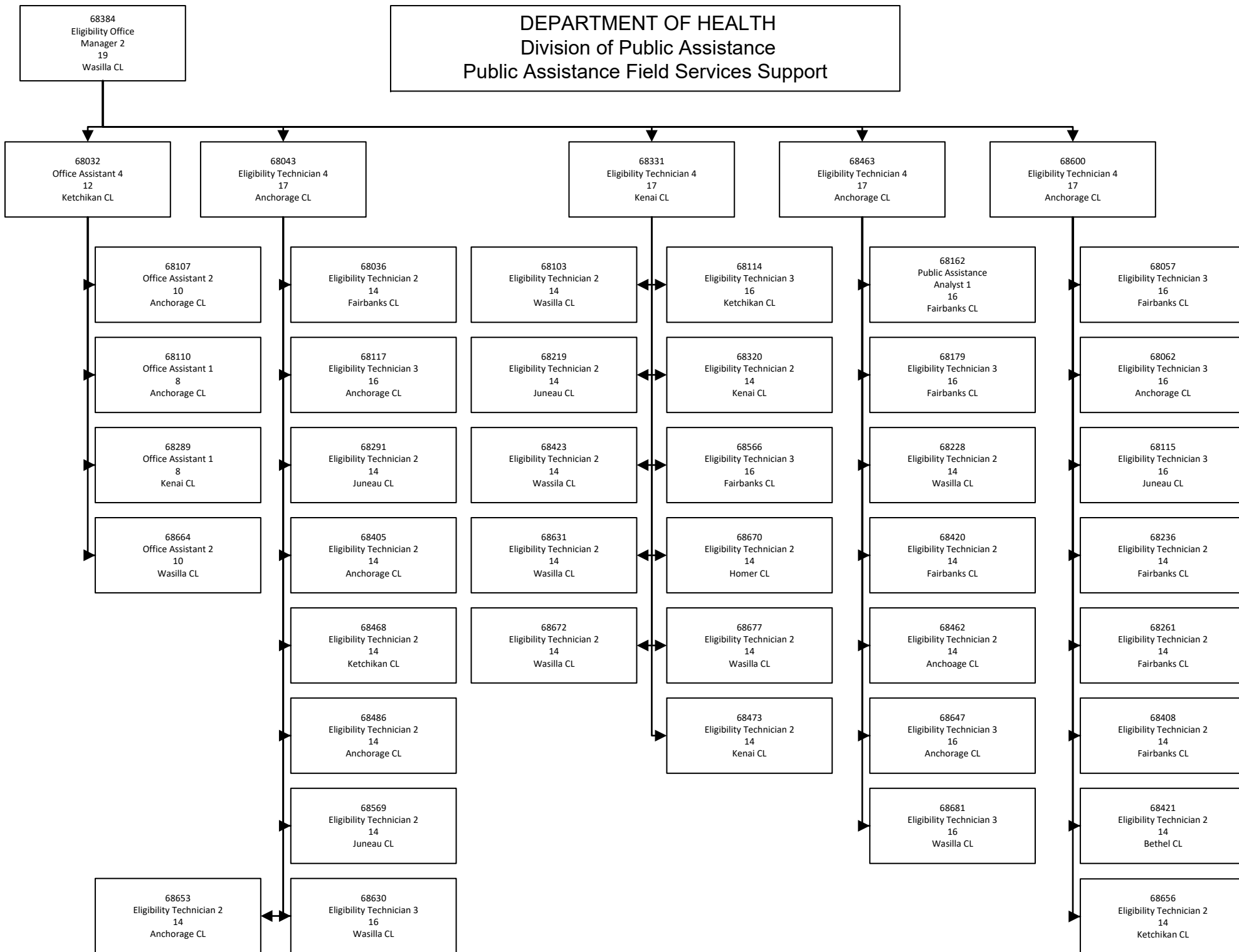
68445
Eligibility Technician 2
14
Fairbanks CL

68610
Eligibility Technician 2
14
Anchorage CL

68516
Eligibility Technician 2
14
Anchorage CL

68651
Eligibility Technician 3
16
Anchorage CL

DEPARTMENT OF HEALTH
Division of Public Assistance
Public Assistance Field Services Support



DEPARTMENT OF HEALTH
Division of Public Assistance
Public Assistance Field Services Technology & Development

68582
 Program Manager 2
 22
 Wasilla CL

68235
 Eligibility Office
 Manager 2
 19
 Fairbanks CL

68315
 Eligibility Technician 4
 17
 Fairbanks CL

68700
 Eligibility Technician 4
 17
 Wasilla CL

68366
 Office Assistant 4
 12
 Wasilla CL

68509
 Eligibility Technician 2
 14
 Ketchikan CL

68520
 Eligibility Technician 2
 14
 Anchorage CL

68611
 Eligibility Technician 3
 16
 Anchorage CL

68266
 Office Assistant 1
 8
 Anchorage CL

68118
 Eligibility Technician 3
 16
 Anchorage CL

68311
 Eligibility Technician 2
 14
 Anchorage CL

68441
 Eligibility Technician 2
 14
 Fairbanks CL

68690
 Office Assistant 2
 10
 Anchorage CL

68584
 Eligibility Technician 2
 14
 Bethel CL

68176
 Eligibility Technician 2
 14
 Anchorage CL

68031
 Eligibility Technician 2
 14
 Bethel CL

68112
 Office Assistant 1
 8
 Anchorage CL

68203
 Eligibility Technician 2
 14
 Fairbanks CL

68139
 Eligibility Technician 2
 14
 Wasilla CL

68488
 Eligibility Technician 2
 14
 Wasilla CL

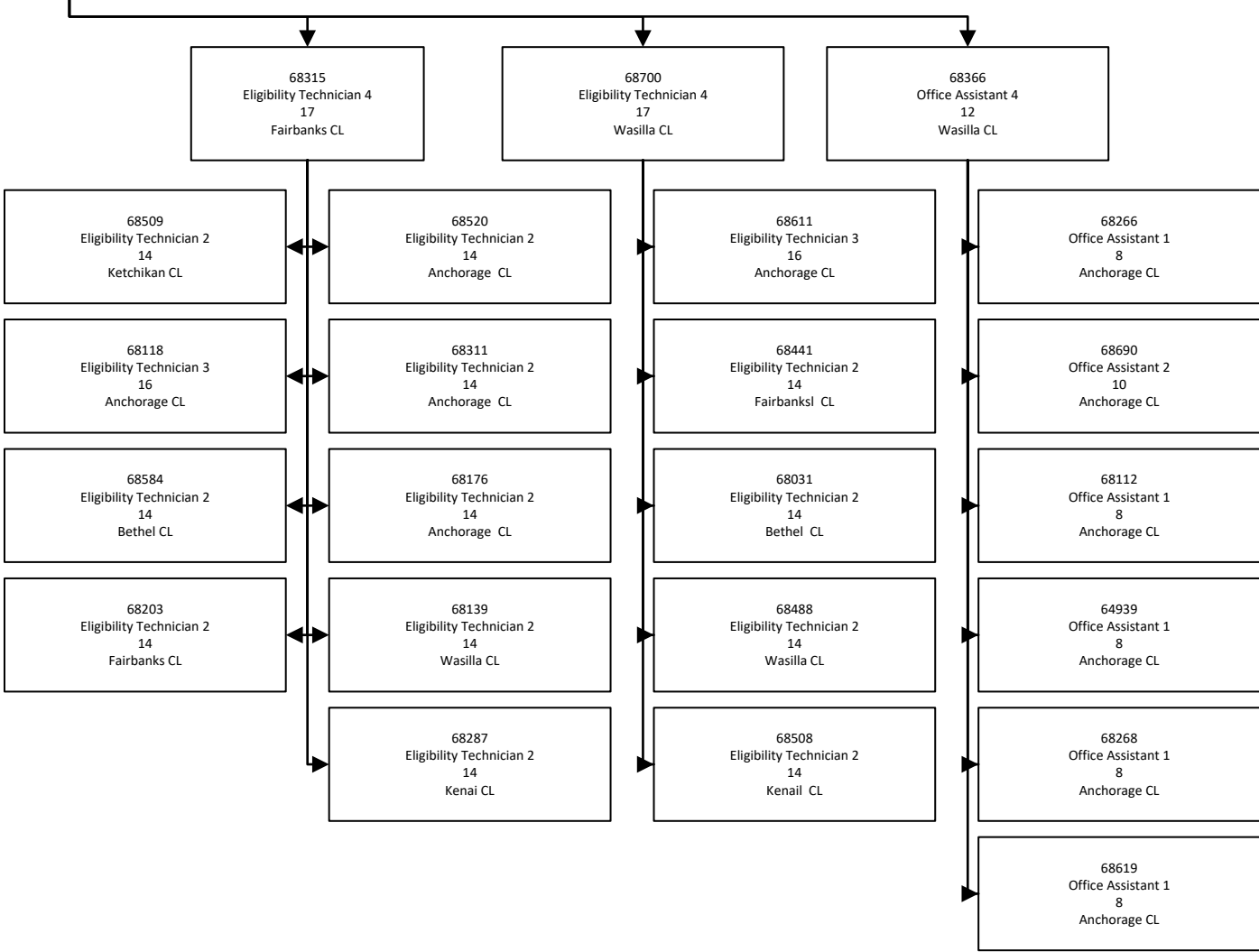
64939
 Office Assistant 1
 8
 Anchorage CL

68287
 Eligibility Technician 2
 14
 Kenai CL

68508
 Eligibility Technician 2
 14
 Kenail CL

68268
 Office Assistant 1
 8
 Anchorage CL

68619
 Office Assistant 1
 8
 Anchorage CL



DEPARTMENT OF HEALTH
Division of Public Assistance
Public Assistance Field Services Workflow & Workload

75591
Public Asst P/O
21
Anchorage CL



68081
Eligibility Office
Manager 2
19
Anchorage CL



68150
Public Assistance
Analyst 1
16
Fairbanks CL

68303
Public Assistance
Analyst 2
18
Bethel CL

DEPARTMENT OF HEALTH
Division of Public Assistance
Public Assistance Field Services QA Training

68185
Pb Asst Fsm 2
21
Ketchikan CL

68044
Eligibility Technician
4
17
Wasilla CL

68184
Eligibility Technician
3
16
Anchorage CL

68324
Eligibility Technician
3
16
Ketchikan CL

68431
Eligibility Technician
4
17
Anchorage CL

68592
Public Assistance
Analyst 2
18
Anchorage CL

68546
Eligibility Technician
3
16
Anchorage CL

68699
Eligibility Technician
3
16
Kenai CL

68557
Eligibility Technician
3
16
Anchorage CL

68698
Eligibility Technician
3
16
Wasilla CL

68586
Eligibility Technician
3
16
Anchorage CL

68679
Eligibility Technician
3
16
Wasilla CL

68696
Eligibility Technician
3
16
Wasilla CL

68697
Eligibility Technician
3
16
Wasilla CL

68316
Eligibility Technician
3
16
Anchorage CL

68669
Eligibility Technician
3
16
Wasilla CL

68319
Eligibility Technician
3
16
Anchorage CL

68385
Eligibility Technician
3
16
Anchorage CL

68417
Eligibility Technician
3
16
Kenai CL

68432
Eligibility Technician
3
16
Anchorage CL

68511
Eligibility Technician
3
16
Anchorage CL