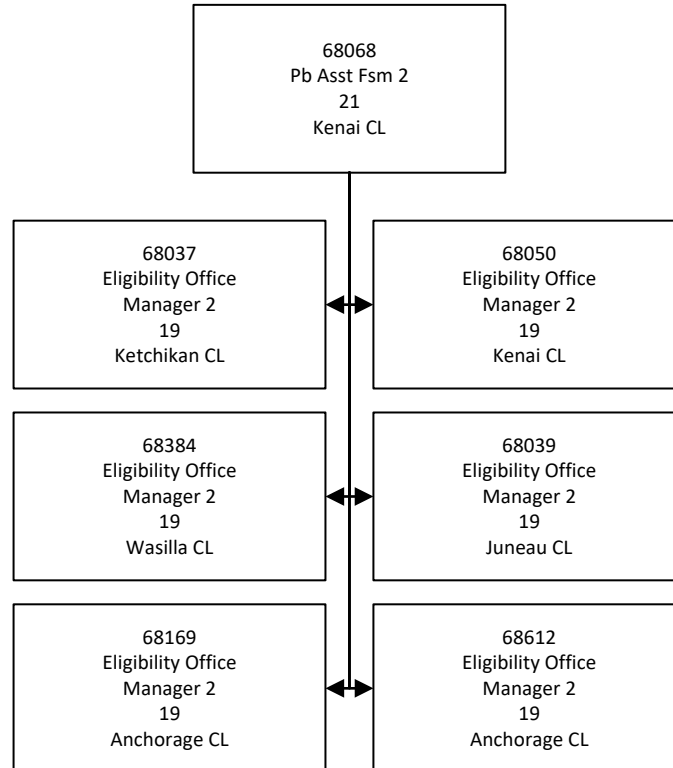
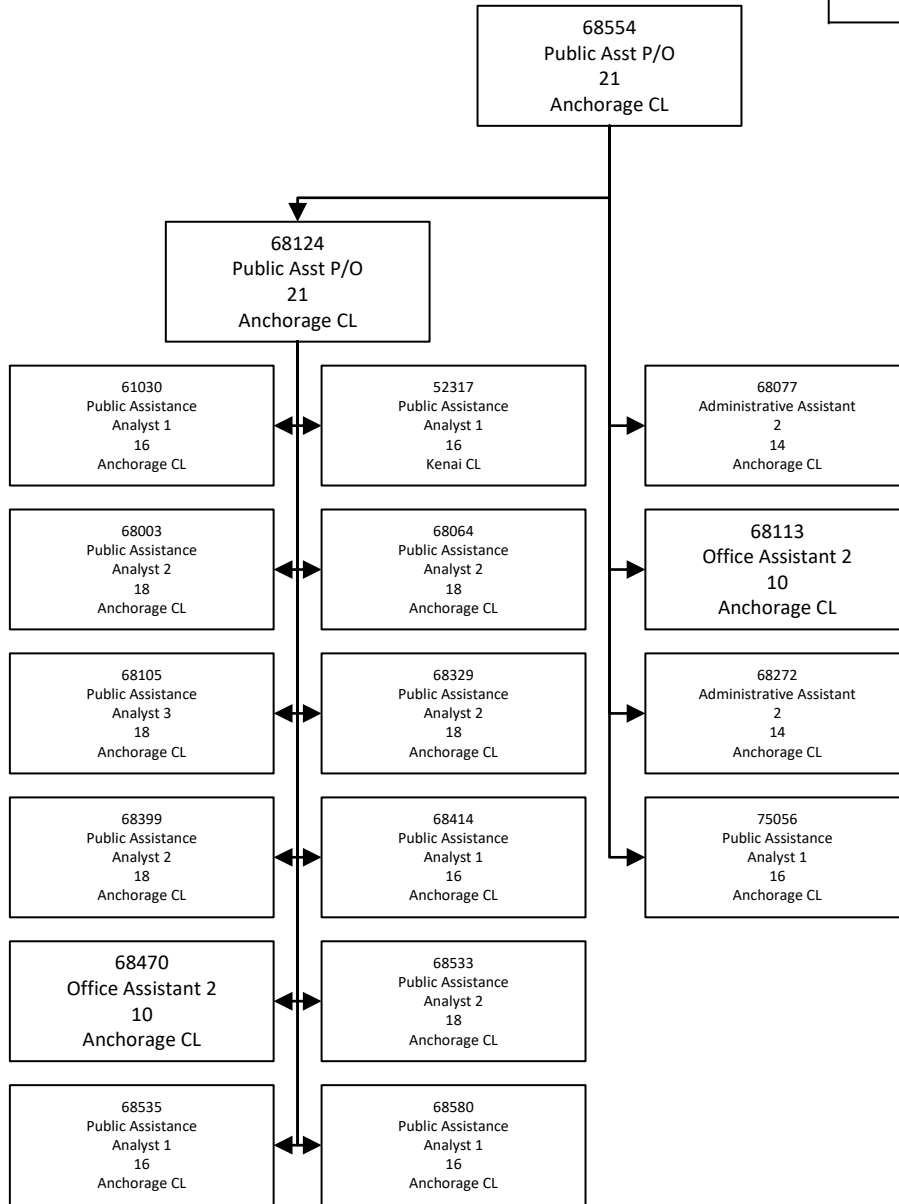


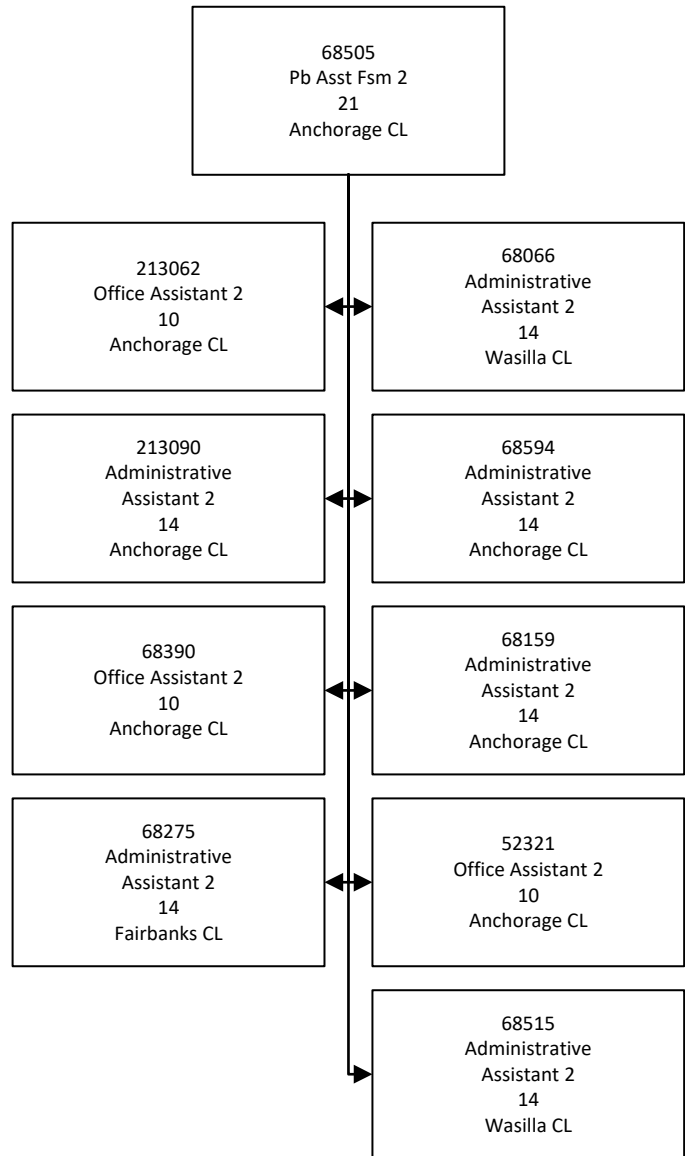
DEPARTMENT OF HEALTH  
Division of Public Assistance  
Public Assistance Field Services Support



DEPARTMENT OF HEALTH  
 Division of Public Assistance  
 Public Assistance Field Services Support



DEPARTMENT OF HEALTH  
Division of Public Assistance  
Public Assistance Workforce & Staffing



DEPARTMENT OF HEALTH  
Division of Public Assistance  
Public Assistance Statewide Clerical

68050  
Eligibility Office  
Manager 2  
19  
Kenai CL

68207  
Office Assistant 4  
12  
Kenai CL

68208  
Office Assistant 4  
12  
Fairbanks CL

68247  
Office Assistant 4  
12  
Anchorage CL

68265  
Office Assistant 4  
12  
Anchorage CL

68332  
Office Assistant 4  
12  
Juneau CL

68650  
Office Assistant 4  
12  
Anchorage CL

68276  
Office Assistant 2  
10  
Fairbanks CL

68067  
Office Assistant 1  
8  
Fairbanks CL

68277  
Office Assistant 2  
10  
Anchorage CL

68238  
Office Assistant 1  
8  
Wasilla CL

68109  
Office Assistant 2  
10  
Wasilla CL

68049  
Office Assistant 2  
10  
Sitka CL

68281  
Office Assistant 1  
8  
Fairbanks CL

68243  
Office Assistant 2  
10  
Juneau CL

68335  
Office Assistant 1  
8  
Fairbanks CL

68280  
Office Assistant 2  
10  
Nome CL

68143  
Office Assistant 1  
8  
Wasilla CL

68248  
Office Assistant 1  
8  
Anchorage CL

68337  
Office Assistant 1  
8  
Ketchikan CL

68279  
Office Assistant 1  
8  
Fairbanks CL

68430  
Office Assistant 1  
8  
Wasilla CL

68369  
Office Assistant 2  
10  
Bethel CL

68237  
Office Assistant 1  
8  
Wasilla CL

68271  
Office Assistant 1  
8  
Anchorage CL

68459  
Office Assistant 1  
8  
Wasilla CL

68294  
Office Assistant 2  
10  
Juneau CL

68476  
Office Assistant 1  
8  
Anchorage CL

68403  
Office Assistant 2  
10  
Kodiak CL

68341  
Office Assistant 2  
10  
Wasilla CL

68334  
Office Assistant 2  
10  
Homer CL

68692  
Office Assistant 2  
10  
Anchorage CL

68454  
Office Assistant 1  
8  
Wasilla CL

68601  
Office Assistant 1  
8  
Anchorage CL

68593  
Office Assistant 1  
8  
Fairbanks CL

68633  
Office Assistant 1  
8  
Wasilla CL

68338  
Office Assistant 1  
8  
Juneau CL

68665  
Office Assistant 2  
10  
Wasilla CL

68662  
Office Assistant 2  
10  
Wasilla CL

68649  
Office Assistant 1  
8  
Wasilla CL

68467  
Office Assistant 1  
8  
Kenai CL

68693  
Office Assistant 2  
10  
Anchorage CL

68689  
Office Assistant 2  
10  
Anchorage CL

DEPARTMENT OF HEALTH  
Division of Public Assistance  
Public Assistance Field Services Support

68169  
Eligibility Office Manager  
2  
19  
Anchorage CL

68040  
Eligibility Technician 4  
17  
Fairbanks CL

68201  
Eligibility Technician 4  
17  
Wasilla CL

68269  
Eligibility Technician 4  
17  
Anchorage CL

68304  
Eligibility Technician 4  
17  
Anchorage CL

68119  
Eligibility Technician 3  
16  
Juneau CL

68251  
Eligibility Technician 2  
14  
Wasilla CL

68278  
Eligibility Technician 2  
14  
Anchorage CL

68299  
Eligibility Technician 2  
14  
Anchorage CL

68558  
Eligibility Technician 2  
14  
Fairbanks CL

68562  
Eligibility Technician 2  
14  
Kenai CL

68171  
Eligibility Technician 3  
16  
Wasilla CL

68307  
Eligibility Technician 2  
14  
Anchorage CL

68446  
Eligibility Technician 2  
14  
Fairbanks CL

68608  
Eligibility Technician 2  
14  
Anchorage CL

68666  
Eligibility Technician 2  
14  
Wasilla CL

68099  
Eligibility Technician 3  
16  
Anchorage CL

68141  
Eligibility Technician 2  
14  
Anchorage CL

68295  
Eligibility Technician 2  
14  
Kenai CL

68483  
Eligibility Technician 2  
14  
Anchorage CL

68500  
Eligibility Technician 2  
14  
Anchorage CL

68506  
Eligibility Technician 2  
14  
Anchorage CL

68660  
Eligibility Technician 2  
14  
Anchorage CL

68091  
Eligibility Technician 2  
14  
Anchorage CL

68111  
Eligibility Technician 3  
16  
Anchorage CL

68242  
Eligibility Technician 2  
14  
Anchorage CL

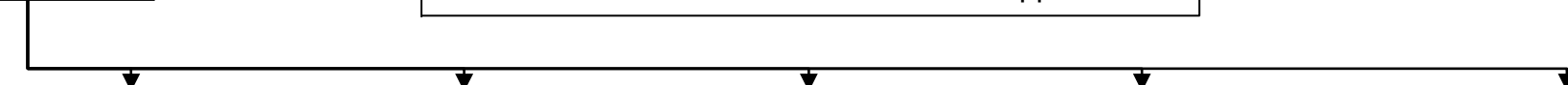
68514  
Eligibility Technician 2  
14  
Kenai CL

68627  
Eligibility Technician 2  
14  
Anchorage CL

68628  
Eligibility Technician 2  
14  
Anchorage CL

**DEPARTMENT OF HEALTH**  
**Division of Public Assistance**  
**Public Assistance Field Services Support**

68037  
 Eligibility Office  
 Manager 2  
 19  
 Ketchikan CL



68172  
 Eligibility Technician 4  
 17  
 Wasilla CL

68180  
 Eligibility Technician 4  
 17  
 Wasilla CL

68210  
 Eligibility Technician 4  
 17  
 Juneau CL

68368  
 Eligibility Technician 4  
 17  
 Anchorage CL

68667  
 Eligibility Technician 4  
 17  
 Kenai CL

68054  
 Eligibility Technician 2  
 14  
 Kenai CL

68168  
 Eligibility Technician 3  
 16  
 Ketchikan CL

68035  
 Eligibility Technician 2  
 14  
 Sitka CL

68085  
 Eligibility Technician 2  
 14  
 Juneau CL

68140  
 Eligibility Technician 2  
 14  
 Juneau CL

68173  
 Eligibility Technician 3  
 16  
 Anchorage CL

68252  
 Eligibility Technician 2  
 14  
 Ketchikan CL

68284  
 Eligibility Technician 2  
 14  
 Wasilla CL

68079  
 Eligibility Technician 2  
 14  
 Bethel CL

68181  
 Eligibility Technician 3  
 16  
 Kenai CL

68253  
 Eligibility Technician 2  
 14  
 Anchorage CL

68301  
 Eligibility Technician 2  
 14  
 Anchorage CL

68325  
 Eligibility Technician 2  
 14  
 Ketchikan CL

68090  
 Eligibility Technician 2  
 14  
 Bethel CL

68182  
 Eligibility Technician 2  
 14  
 Fairbanks CL

68434  
 Eligibility Technician 2  
 14  
 Fairbanks CL

68326  
 Eligibility Technician 2  
 14  
 Ketchikan CL

68479  
 Eligibility Technician 2  
 14  
 Fairbanks CL

68120  
 Eligibility Technician 3  
 16  
 Bethel CL

68231  
 Eligibility Technician 2  
 14  
 Wasilla CL

68471  
 Eligibility Technician 2  
 14  
 Anchorage CL

68605  
 Eligibility Technician 2  
 14  
 Anchorage CL

68202  
 Eligibility Technician 2  
 14  
 Anchorage CL

68455  
 Eligibility Technician 2  
 14  
 Juneau CL

68499  
 Eligibility Technician 2  
 14  
 Anchoage CL

68204  
 Eligibility Technician 2  
 14  
 Kenai CL

68618  
 Eligibility Technician 2  
 14  
 Wasilla CL

68521  
 Eligibility Technician 3  
 16  
 Anchorage CL

68570  
 Eligibility Technician 2  
 14  
 Ketchikan CL

68642  
 Eligibility Technician 2  
 14  
 Wasilla CL

68680  
 Eligibility Technician 2  
 14  
 Wasilla CL

68678  
 Eligibility Technician 2  
 14  
 Wasilla CL

68257  
 Eligibility Technician 2  
 16  
 Anchorage CL



DEPARTMENT OF HEALTH  
Division of Public Assistance  
Public Assistance Field Services Support

68039  
Eligibility Office  
Manager 2  
19  
Juneau CL

68063  
Eligibility Technician 4  
17  
Ketchikan CL

68098  
Eligibility Technician 4  
17  
Wasilla CL

68507  
Eligibility Technician 4  
17  
Anchorage CL

68668  
Eligibility Technician 4  
17  
Homer CL

68433  
Eligibility Technician 3  
16  
Anchorage CL

68089  
Eligibility Technician 2  
14  
Fairbanks CL

68465  
Eligibility Technician 2  
14  
Wasilla CL

68547  
Eligibility Technician 2  
14  
Fairbanks CL

68556  
Eligibility Technician 2  
14  
Anchorage CL

68583  
Eligibility Technician 2  
14  
Anchorage CL

68657  
Eligibility Technician 2  
14  
Ketchikan CL

68073  
Eligibility Technician 3  
16  
Anchorage CL

68333  
Eligibility Technician 2  
14  
Anchorage CL

68375  
Eligibility Technician 2  
14  
Wasilla CL

68409  
Eligibility Technician 2  
14  
Anchorage CL

68617  
Eligibility Technician 2  
14  
Anchorage CL

68641  
Eligibility Technician 2  
14  
Wasilla CL

68174  
Eligibility Technician 2  
14  
Anchorage CL

64938  
Eligibility Technician 2  
14  
Anchorage CL

68034  
Eligibility Technician 2  
14  
Nome CL

68060  
Eligibility Technician 3  
16  
Anchorage CL

68305  
Eligibility Technician 2  
14  
Anchorage CL

68145  
Eligibility Technician 2  
14  
Kodiak CL

68449  
Eligibility Technician 2  
14  
Nome CL

68259  
Eligibility Technician 2  
14  
Anchorage CL

68671  
Eligibility Technician 2  
14  
Kodiak CL

68106  
Eligibility Technician 3  
16  
Homer CL

68560  
Eligibility Technician 2  
14  
Fairbanks CL

68323  
Eligibility Technician 2  
14  
Bethel CL

68559  
Eligibility Technician 2  
14  
Anchorage CL

68438  
Eligibility Technician 2  
14  
Wasilla CL

68475  
Eligibility Technician 2  
14  
Anchorage CL

68480  
Eligibility Technician 2  
14  
Fairbanks CL

DEPARTMENT OF HEALTH  
Division of Public Assistance  
Public Assistance Field Services Support

68612  
Eligibility Office  
Manager 2  
19  
Anchorage CL

68442  
Eligibility Technician 4  
17  
Fairbanks CL

68661  
Eligibility Technician 4  
17  
Juneau CL

68702  
Eligibility Technician 4  
17  
Ketchikan CL

75979  
Eligibility Technician 4  
17  
Kenai CL

68175  
Eligibility Technician 2  
14  
Wasilla CL

68321  
Eligibility Technician 2  
14  
Kenai CL

68419  
Eligibility Technician 3  
16  
Anchorage CL

68457  
Eligibility Technician 2  
14  
Wasilla CL

68469  
Eligibility Technician 2  
14  
Wasilla CL

68571  
Eligibility Technician 2  
14  
Wasilla CL

68540  
Eligibility Technician 2  
14  
Anchorage CL

68116  
Eligibility Technician 2  
14  
Anchorage CL

68051  
Eligibility Technician 2  
14  
Fairbanks CL

68378  
Eligibility Technician 3  
16  
Wasilla CL

68504  
Eligibility Technician 2  
14  
Juneau CL

68513  
Eligibility Technician 2  
14  
Wasilla CL

68673  
Eligibility Technician 2  
14  
Wasilla CL

68674  
Eligibility Technician 2  
14  
Wasilla CL

68392  
Eligibility Technician 2  
14  
Anchorage CL

68177  
Eligibility Technician 2  
14  
Anchorage CL

68453  
Eligibility Technician 2  
14  
Kenai CL

68460  
Eligibility Technician 2  
14  
Anchorage CL

68501  
Eligibility Technician 3  
16  
Kenai CL

68502  
Eligibility Technician 2  
14  
Wasilla CL

68585  
Eligibility Technician 2  
14  
Wasilla CL

68655  
Eligibility Technician 2  
14  
Ketchikan CL

68528  
Eligibility Technician 2  
14  
Wasilla CL

68286  
Eligibility Technician 2  
14  
Kenai CL

68564  
Eligibility Technician 2  
14  
Wasilla CL

68445  
Eligibility Technician 2  
14  
Fairbanks CL

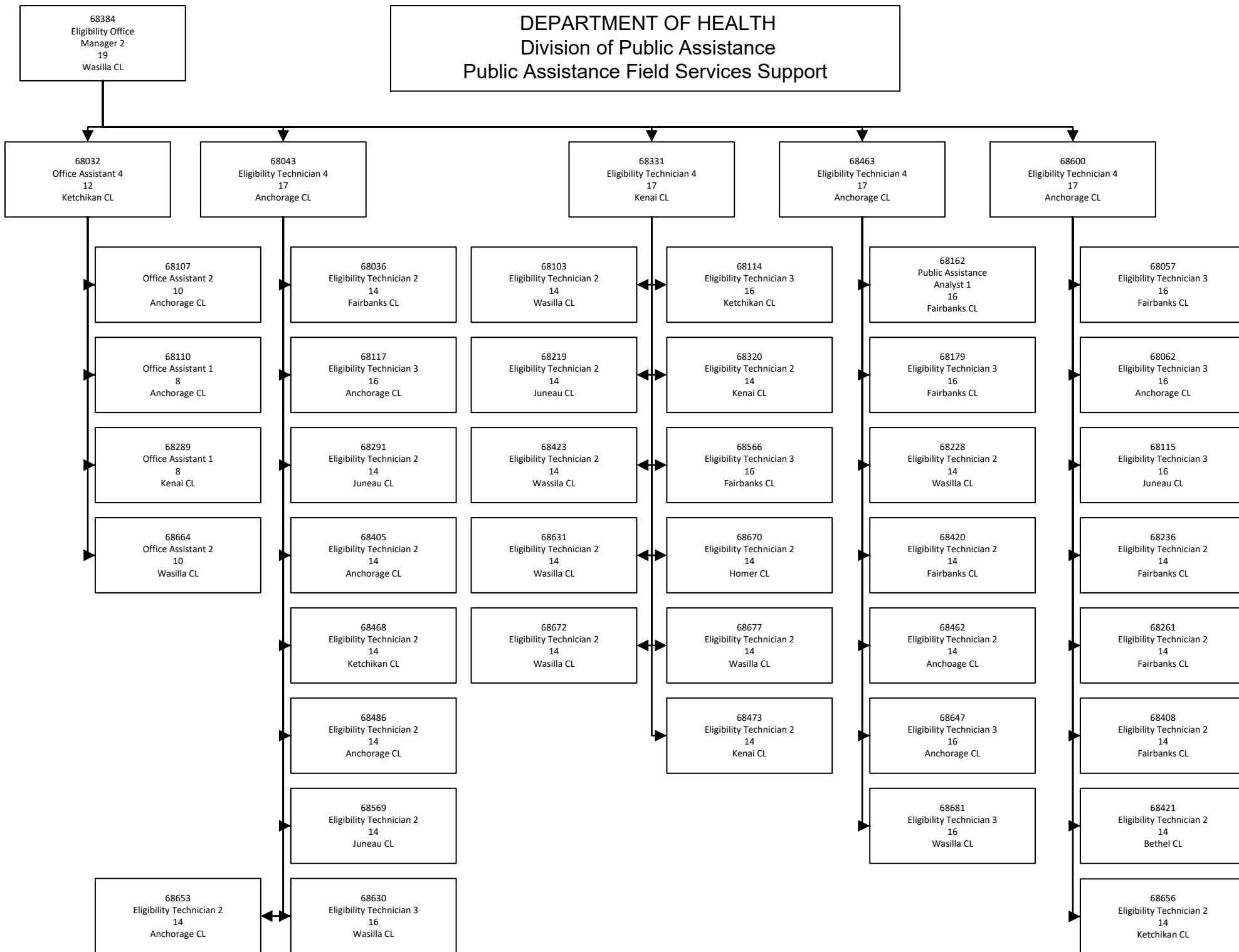
68610  
Eligibility Technician 2  
14  
Anchorage CL

68516  
Eligibility Technician 2  
14  
Anchorage CL

68651  
Eligibility Technician 3  
16  
Anchorage CL



**DEPARTMENT OF HEALTH**  
**Division of Public Assistance**  
**Public Assistance Field Services Support**



**DEPARTMENT OF HEALTH**  
**Division of Public Assistance**  
**Public Assistance Field Services Technology & Development**

68582  
 Program Manager 2  
 22  
 Wasilla CL

68235  
 Eligibility Office  
 Manager 2  
 19  
 Fairbanks CL

68315  
 Eligibility Technician 4  
 17  
 Fairbanks CL

68700  
 Eligibility Technician 4  
 17  
 Wasilla CL

68366  
 Office Assistant 4  
 12  
 Wasilla CL

68509  
 Eligibility Technician 2  
 14  
 Ketchikan CL

68520  
 Eligibility Technician 2  
 14  
 Anchorage CL

68611  
 Eligibility Technician 3  
 16  
 Anchorage CL

68266  
 Office Assistant 1  
 8  
 Anchorage CL

68118  
 Eligibility Technician 3  
 16  
 Anchorage CL

68311  
 Eligibility Technician 2  
 14  
 Anchorage CL

68441  
 Eligibility Technician 2  
 14  
 Fairbanks CL

68690  
 Office Assistant 2  
 10  
 Anchorage CL

68584  
 Eligibility Technician 2  
 14  
 Bethel CL

68176  
 Eligibility Technician 2  
 14  
 Anchorage CL

68031  
 Eligibility Technician 2  
 14  
 Bethel CL

68112  
 Office Assistant 1  
 8  
 Anchorage CL

68203  
 Eligibility Technician 2  
 14  
 Fairbanks CL

68139  
 Eligibility Technician 2  
 14  
 Wasilla CL

68488  
 Eligibility Technician 2  
 14  
 Wasilla CL

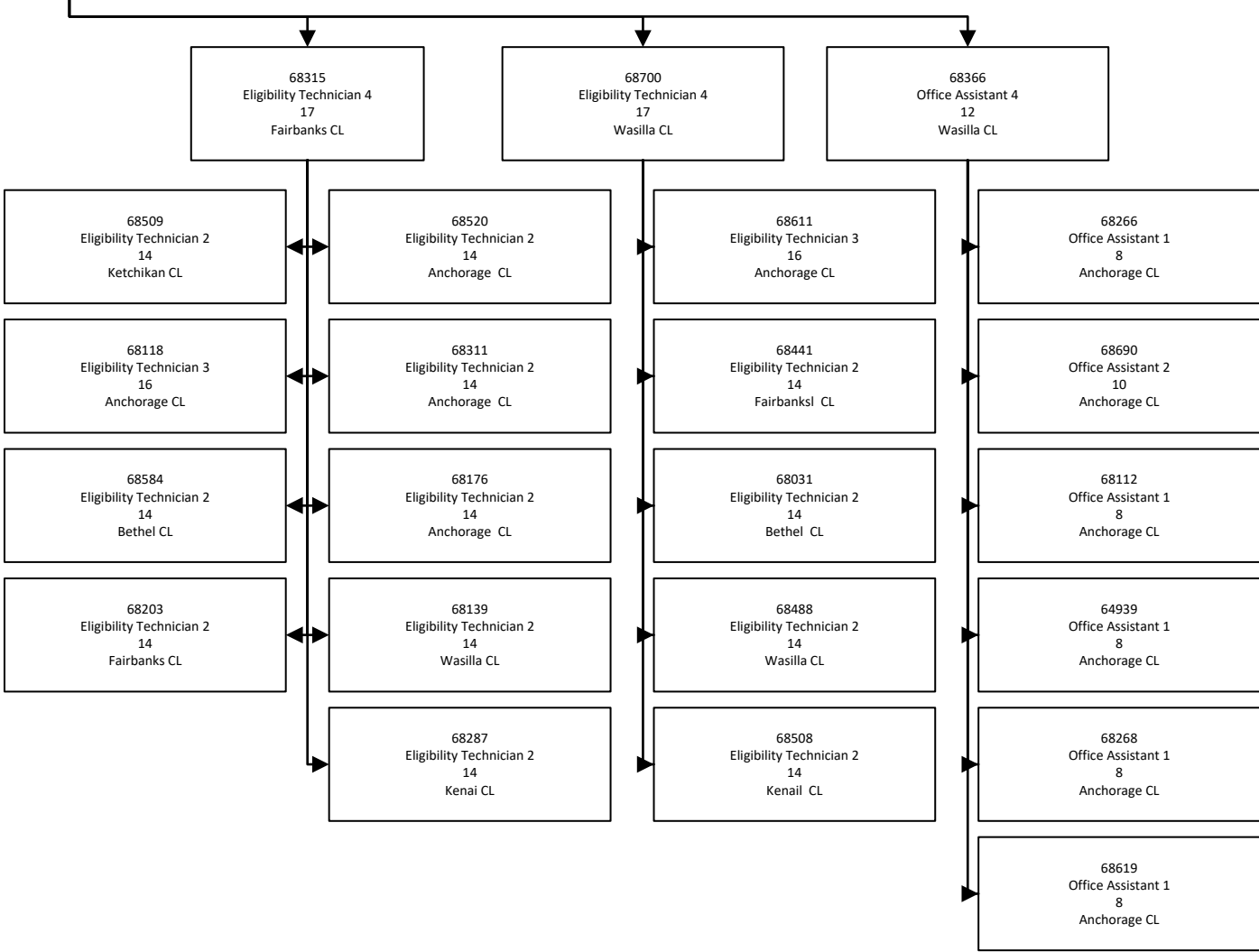
64939  
 Office Assistant 1  
 8  
 Anchorage CL

68287  
 Eligibility Technician 2  
 14  
 Kenai CL

68508  
 Eligibility Technician 2  
 14  
 Kenail CL

68268  
 Office Assistant 1  
 8  
 Anchorage CL

68619  
 Office Assistant 1  
 8  
 Anchorage CL



DEPARTMENT OF HEALTH  
Division of Public Assistance  
Public Assistance Field Services Workflow & Workload

75591  
Public Asst P/O  
21  
Anchorage CL



68081  
Eligibility Office  
Manager 2  
19  
Anchorage CL



68150  
Public Assistance  
Analyst 1  
16  
Fairbanks CL

68303  
Public Assistance  
Analyst 2  
18  
Bethel CL

DEPARTMENT OF HEALTH  
Division of Public Assistance  
Public Assistance Field Services QA Training

68185  
Pb Asst Fsm 2  
21  
Ketchikan CL

68044  
Eligibility Technician  
4  
17  
Wasilla CL

68184  
Eligibility Technician  
3  
16  
Anchorage CL

68324  
Eligibility Technician  
3  
16  
Ketchikan CL

68431  
Eligibility Technician  
4  
17  
Anchorage CL

68592  
Public Assistance  
Analyst 2  
18  
Anchorage CL

68546  
Eligibility Technician  
3  
16  
Anchorage CL

68699  
Eligibility Technician  
3  
16  
Kenai CL

68557  
Eligibility Technician  
3  
16  
Anchorage CL

68698  
Eligibility Technician  
3  
16  
Wasilla CL

68586  
Eligibility Technician  
3  
16  
Anchorage CL

68679  
Eligibility Technician  
3  
16  
Wasilla CL

68696  
Eligibility Technician  
3  
16  
Wasilla CL

68697  
Eligibility Technician  
3  
16  
Wasilla CL

68316  
Eligibility Technician  
3  
16  
Anchorage CL

68669  
Eligibility Technician  
3  
16  
Wasilla CL

68319  
Eligibility Technician  
3  
16  
Anchorage CL

68385  
Eligibility Technician  
3  
16  
Anchorage CL

68417  
Eligibility Technician  
3  
16  
Kenai CL

68432  
Eligibility Technician  
3  
16  
Anchorage CL

68511  
Eligibility Technician  
3  
16  
Anchorage CL