

Department of Health
 RDU: Public Health (502)
 Component: Nursing (288)

Public Health Nurse 6
 06-1019 R-27
 Anchorage CL

Administrative Officer 2
 06-1452 R-19
 Anchorage CL

Public Health Nurse 5
 06-1020 R-26
 Anchorage CL

Public Health Nurse 5
 06-1143 R-26
 Fairbanks CL

Public Health Nurse 5
 06-1117 R-26
 Wasilla CL

Public Health Nurse 5
 06-1226 R-26
 Juneau CL

Administrative Assistant 2
 06-1155 R-14
 Fairbanks CL

Administrative Assistant 2
 06-1126 R-14
 Wasilla CL

Administrative Assistant 2
 06-1093 R-14
 Juneau CL

Administrative Assistant 2
 06-1766 R-14
 Juneau CL

Office Assistant 2
 06-1907 R-10
 Juneau CL

Administrative Assistant 2
 06-1133 R-14
 Anchorage CL

Office Assistant 2
 06-1798 R-10
 Anchorage CL

Nurse Consultant II
 06-1134 R-26
 Anchorage CL

Nurse Consultant 2
 06-1648 R-26
 Juneau CL

Nurse Consultant 2
 06-1676 R-26
 Anchorage CL

Nurse Consultant 2
 06-1680 R-26
 Fairbanks CL

Nurse Consultant 2
 06-1756 R-26
 Anchorage CL

Program Coordinator 1
 06-2023 R-18
 Anchorage CL

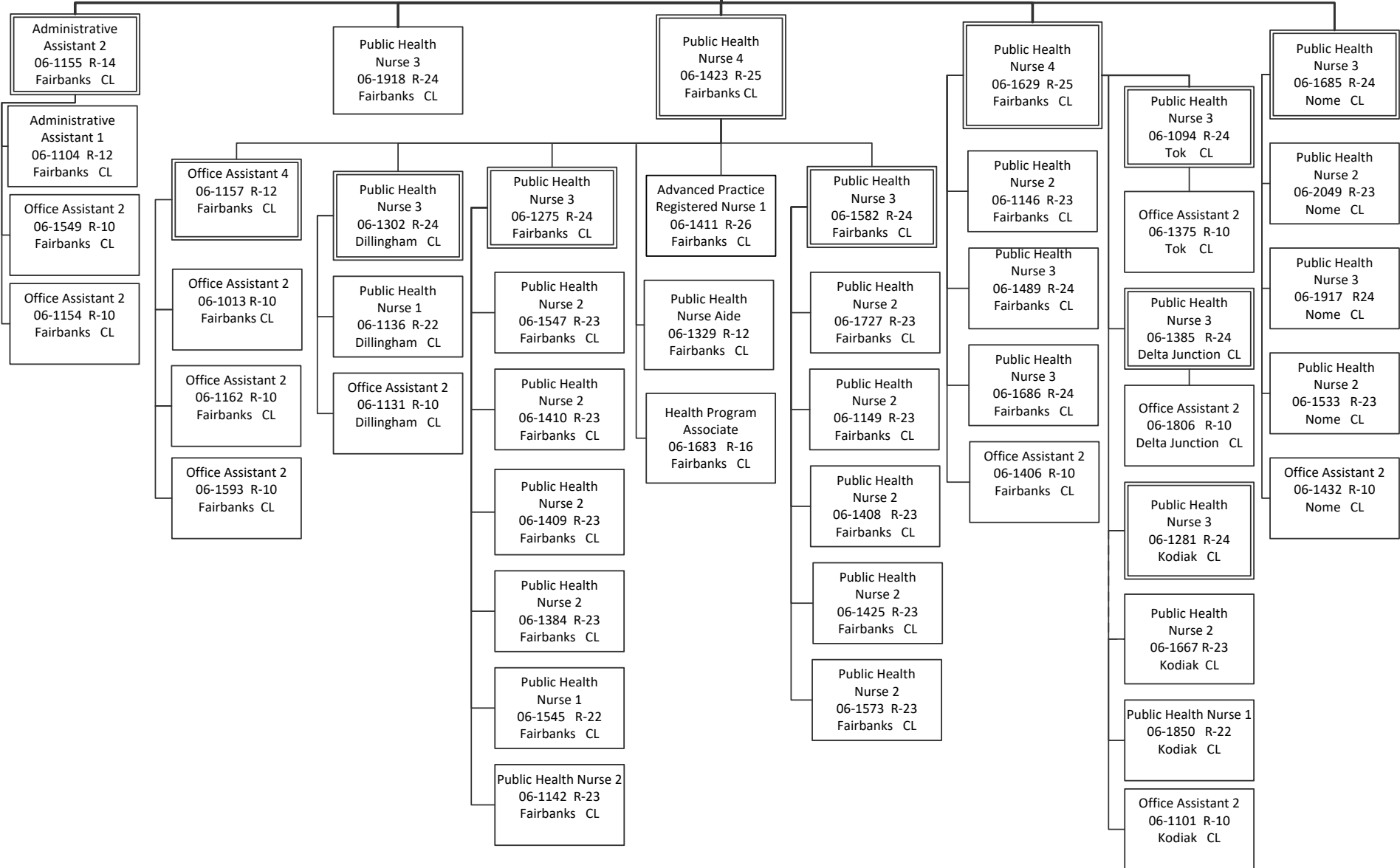
Health Program Associate
 06-1373 R-16
 Anchorage CL

Office Assistant 2
 06-1906 R-10
 Anchorage CL

Health Program Associate
 06-1212 R-16
 Juneau CL

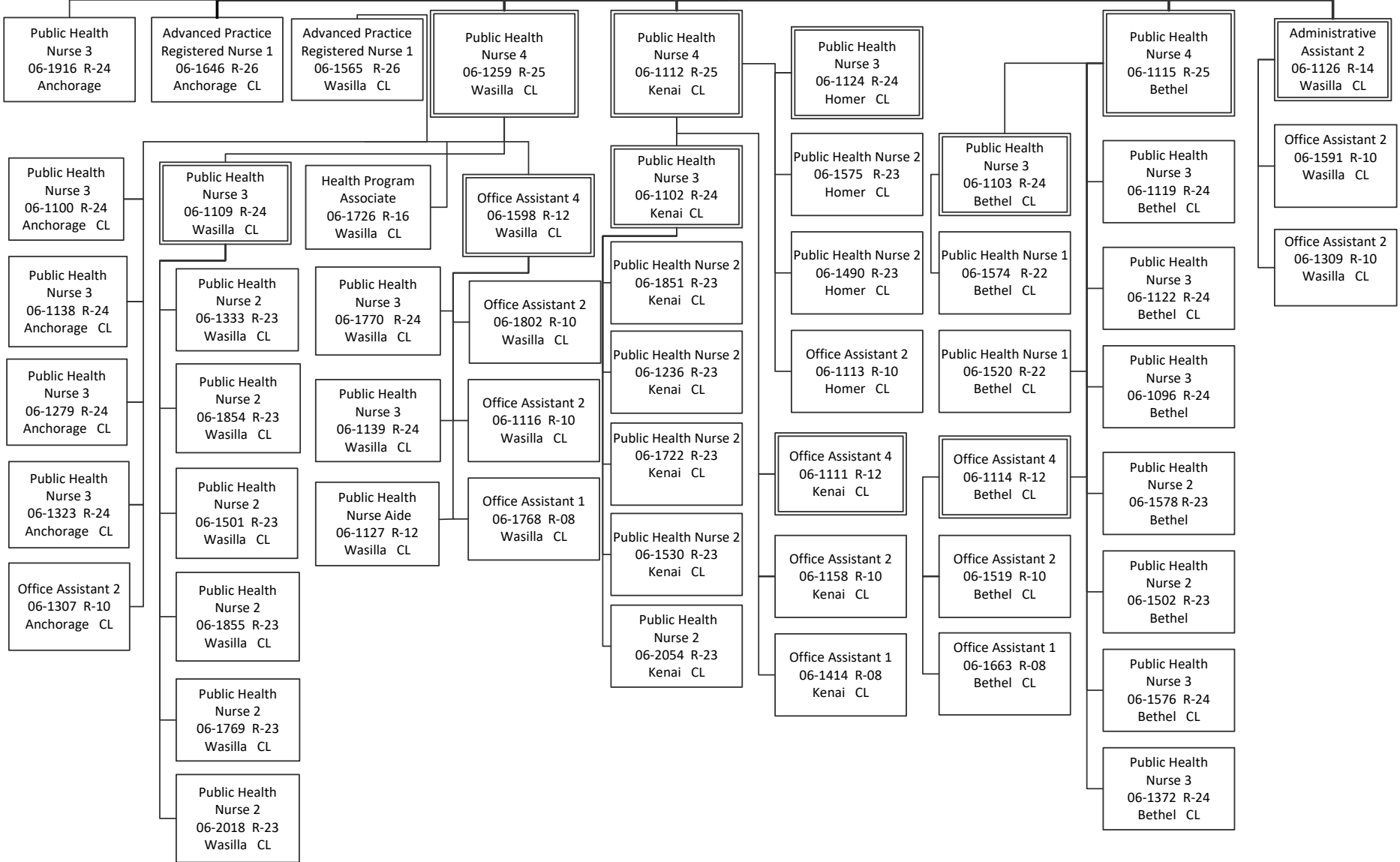
Department of Health
RDU: Public Health (502)
Component: Nursing (288)

Public Health Nurse 5
06-1143 R-26
Fairbanks CL



Department of Health
RDU: Public Health (502)
Component: Nursing (288)

Public Health Nurse V
06-1117 R-26
Wasilla CL



Department of Health
RDU: Public Health (502)
Component: Nursing (288)

Public Health Nurse 5
06-1226 R-26
Juneau CL

