

State of Alaska
FY2023 Governor's Operating Budget

Department of Labor and Workforce Development
Unemployment Insurance
Component Budget Summary

Component: Unemployment Insurance**Contribution to Department's Mission**

Provide economic stability for communities in Alaska through payment of unemployment insurance benefits that keep skilled workers in Alaska.

Core Services

- Pay Unemployment Insurance (UI) benefits to eligible unemployed workers.
- Assess and collect UI tax contributions.
- Provide web-based services and products to workers and employers for accessing the Tax Online System and Benefit Internet Filing system.
- Work with and educate employers on how to fulfill contribution and reporting requirements.
- Protect integrity of the UI Trust Fund by preventing, detecting, and recovering benefit overpayments.

Major Component Accomplishments in 2021

- Paid Unemployment Insurance (UI) benefits in a timely manner to 92,665 claimants, totaling over \$865 million in benefits to assist workers who were temporarily out of work due to no fault of their own.
- UI claim centers responded to 589,780 phone calls from claimants and employers. 99 percent of clients used automated systems to file their weekly claims.
- Deposited over \$119 million of UI contributions into the UI Tax Trust Account. Over \$19.4 million was collected and deposited into the accounts of the State Training and Employment Program and Alaska Technical and Vocational Education Program.
- The UI program collected \$1.6 million in overpaid benefits from fraudulent claims.
- Recovered \$1,029,480 dollars through garnishment of IRS tax returns of claimants and employers who owe the UI Trust Fund due to fraudulent claims or past due contributions.
- In coordination with Workforce Services, participated in rapid response activities that affected hundreds of workers due to COVID-19 related closures of businesses. Rapid response meetings were critical in educating laid off workers about the UI program, filing requirements, and available reemployment services.

Key Component Challenges

The UI program faced a critical challenge with its antiquated Legacy mainframe system. The pandemic brought the 30 year old system shortcomings to the forefront as Congress passed many new UI programs to help unemployed workers affected by the pandemic. Although Congress provided \$2 billion to the U.S. Department of Labor (USDOL) to modernize state UI systems, USDOL decided to not provide states with direct funding to replace antiquated UI systems.

With the end of the UI programs enacted due to the COVID-19 pandemic, Alaska has started to close out the multiple programs and is gearing up for the associated audits. These audits include the state's Division of Legislative Audit, Federal Emergency Management Agency (FEMA) for the Lost Wage Assistance (LWA) program, and USDOL audits for multiple CARES Act programs. The audits consume a great deal of staff time and agency resources.

Due to the COVID-19 pandemic, prior initiatives were paused to enact the multiple UI programs passed by Congress and the state legislature. With the end of the pandemic, work is resuming to expand the use of claimant oriented automated services to more efficiently process new and additional claims and provide UI notifications and questionnaires via the claimants chosen email address. Additionally, the program is continuing work to upgrade the Tax Online System to better serve the needs of Alaskan employers and allow for more efficient automated filing of quarterly contribution reports and online payment of employment security taxes

Significant Changes in Results to be Delivered in FY2023

The Benefit Payment Control Unit is implementing new software and strategies to detect fraudulent UI claims as they are initiated. The goal is to focus on identity theft and automatically flag suspicious claims for further investigation prior to payments being issued, thereby reducing fraud and overpayments.

The UI program continues to collaborate with Workforce Services and Workforce Development partners to implement strategies to speed unemployment insurance claimants' return to work. Alaska's Reemployment Services and Eligibility Assessment (RESEA) program began its evidence-based evaluation to ensure program effectiveness in getting unemployed individuals back to work. As program interventions are being reviewed, the UI program and Workforce Services and Workforce Development will continue to assist workers to enable their quick and safe return to work. Efforts are underway in program design and future data systems updates to implement ongoing case management for Reemployment Services and Eligibility Assessment (RESEA) through the introduction of a required second interview to assist UI claimants in their return-to-work efforts, increase the active labor pool, and address workforce shortages experienced by Alaska's employers.

Statutory and Regulatory Authority

Federal Authority:

5 USC Sec. 8501 – 8525	Unemployment Compensation for Federal and Military Employees
20 CFR Part 615	Extended Benefits in the Federal-State Unemployment Compensation Program
20 CFR Part 616	Interstate Arrangement for Combining Employment and Wages
26 USC Chapter 23	Federal Unemployment Tax Act
26 USC Chapter 25	General Provisions Relating to Employment Taxes
26 USC Chapter 65	Abatements, Credits, and Refunds
Social Security Act Title III	Grants to States for Unemployment Compensation Administration
Social Security Act Title IX	Miscellaneous Provisions Relating to Employment Security
Social Security Act Title XI	General Provisions, Peer Review, and Administrative Simplification
Social Security Act Title XII	Advances to State Unemployment Funds
Public Law 93 – 618	Trade Act of 1974
Public Law 103 – 152	Mandatory Profiling of UI Claimants
Public Law 107 – 147	Temporary Extended Unemployment Compensation Act of 2002
Public Law 107 – 210	Trade Adjustment Assistance Reform Act of 2002
Public Law 110 - 252	Supplemental Appropriations Act, 2008, Title IV, Emergency Unemployment Compensation
Public Law 110 – 328	SSI Extension for Elderly and Disabled Refugees Act of 2008
Public Law 110 - 449	Unemployment Compensation Extension Act of 2008
Public Law 111 - 5	Assistance for Unemployed Workers and Struggling Families Act
Public Law 111 - 205	Unemployment Compensation Extension Act of 2010
Public Law 111 - 157	Continuing Extension Act of 2010
Public Law 111 - 312	Tax Relief, Unemployment Insurance Reauthorization and Job Creation Act of 2010
Public Law 112-40	An act to extend the Generalized System of Preferences, and for other purposes
Title 20 CFR, Chapter V	Employment and Training Administration
Public Law 113 - 128	Workforce Innovation and Opportunity Act

Statutory Authority:

AS 23.20	Alaska Employment Security Act
AS 23.15.830	Alaska Technical and Vocational Education Program Account

Administrative Regulations:
8 AAC 85

Employment Security

Admin Order #275

The Division of Business Partnerships is dissolved. The Alaska Workforce Investment Board (AS 23.15.550), is organized as an entity under the Office of the Commissioner. The Employment Security Division and remaining functions of the Division of Business Partnerships are merged into a single division called the Division of Employment and Training Services.

Contact Information
<p>Contact: Patsy Westcott, Director Phone: (907) 465-4453 E-mail: patsy.westcott@alaska.gov</p>

Unemployment Insurance Personal Services Information				
Authorized Positions			Personal Services Costs	
	FY2022 Management Plan	FY2023 Governor		
Full-time	147	149	Annual Salaries	11,303,595
Part-time	28	26	COLA	41,051
Nonpermanent	4	3	Premium Pay	0
			Annual Benefits	7,484,412
			Less 6.99% Vacancy Factor	(1,315,958)
			Lump Sum Premium Pay	0
Totals	179	178	Total Personal Services	17,513,100

Position Classification Summary					
Job Class Title	Anchorage	Fairbanks	Juneau	Others	Total
Accounting Technician 1	0	0	2	0	2
Accounting Technician 2	2	0	7	0	9
Accounting Technician 3	0	0	2	0	2
Accounting Technician 4	1	0	1	0	2
Administrative Assistant 1	0	1	1	0	2
Administrative Assistant 2	1	0	1	0	2
Administrative Assistant 3	0	0	1	0	1
Appeals Officer 1	0	0	1	0	1
Appeals Officer 2	0	0	2	0	2
Appeals Officer 3	0	0	1	0	1
Asst Dir Emp Se	1	0	0	0	1
College Intern 2	1	0	1	0	2
Emp/Ui Tech Mgr	0	0	3	0	3
Employment Security Analyst 1	0	0	1	0	1
Employment Security Analyst 2	2	0	7	0	9
Employment Security Analyst 3	1	0	10	0	11
Field Auditor 1	3	2	3	3	11
Field Auditor 2	2	0	0	0	2
Investigator 2	4	1	3	0	8
Investigator 3	1	0	0	0	1
Office Assistant 1	0	0	1	0	1
Office Assistant 2	0	0	1	0	1
Publications Specialist 3	0	0	1	0	1
Spvr Ui Tax	0	0	1	0	1
Student Intern 2	0	0	1	0	1
Supervisor, Audit Operations	0	0	1	0	1
Ui Claim Mgr 2	1	1	1	0	3
Ui Q/C Auditor	3	2	2	0	7
Ui Q/C Spvr	0	0	1	0	1
Ui Tech 1	25	4	36	0	65
Ui Tech 2	4	1	7	0	12
Ui Tech 3	4	1	6	0	11
Totals	56	13	106	3	178

Component Detail All Funds
Department of Labor and Workforce Development

Component: Unemployment Insurance (2276)
RDU: Employment and Training Services (646)

Non-Formula Component

	FY2021 Actuals	FY2022 Conference Committee	FY2022 Authorized	FY2022 Management Plan	FY2023 Governor	FY2022 Management Plan vs FY2023 Governor	
71000 Personal Services	27,172.9	18,062.3	18,062.3	17,941.9	17,513.1	-428.8	-2.4%
72000 Travel	1.0	26.6	26.6	36.1	36.1	0.0	0.0%
73000 Services	7,277.2	5,324.6	5,324.6	2,546.4	5,350.4	2,804.0	110.1%
74000 Commodities	865.4	252.3	252.3	252.3	252.3	0.0	0.0%
75000 Capital Outlay	0.0	7.5	7.5	7.5	7.5	0.0	0.0%
77000 Grants, Benefits	60,821.7	0.0	0.0	0.0	0.0	0.0	0.0%
78000 Miscellaneous	0.0	0.0	0.0	0.0	0.0	0.0	0.0%
Totals	96,138.2	23,673.3	23,673.3	20,784.2	23,159.4	2,375.2	11.4%
Fund Sources:							
1002 Fed Rcpts (Fed)	95,310.8	22,401.8	22,401.8	19,512.7	21,908.2	2,395.5	12.3%
1005 GF/Prgm (DGF)	0.0	8.4	8.4	8.4	8.2	-0.2	-2.4%
1007 I/A Rcpts (Other)	151.2	346.9	346.9	346.9	343.8	-3.1	-0.9%
1054 Empl Trng (DGF)	335.5	448.1	448.1	448.1	439.6	-8.5	-1.9%
1108 Stat Desig (Other)	5.2	20.0	20.0	20.0	20.0	0.0	0.0%
1151 VoTech Ed (DGF)	335.5	448.1	448.1	448.1	439.6	-8.5	-1.9%
Unrestricted General (UGF)	0.0	0.0	0.0	0.0	0.0	0.0	0.0%
Designated General (DGF)	671.0	904.6	904.6	904.6	887.4	-17.2	-1.9%
Other Funds	156.4	366.9	366.9	366.9	363.8	-3.1	-0.8%
Federal Funds	95,310.8	22,401.8	22,401.8	19,512.7	21,908.2	2,395.5	12.3%
Positions:							
Permanent Full Time	143	143	143	147	149	2	1.4%
Permanent Part Time	31	31	31	28	26	-2	-7.1%
Non Permanent	4	4	4	4	3	-1	-25.0%

Change Record Detail - Multiple Scenarios with Descriptions
Department of Labor and Workforce Development

Component: Unemployment Insurance (2276)
RDU: Employment and Training Services (646)

Scenario/Change Record Title	Trans Type	Totals	Personal Services	Travel	Services	Commodities	Capital Outlay	Grants, Benefits	Miscellaneous	Positions		NP
										PFT	PPT	
***** Changes From FY2022 Conference Committee To FY2022 Authorized *****												
FY2022 Conference Committee												
ConfCom		23,673.3	18,062.3	26.6	5,324.6	252.3	7.5	0.0	0.0	143	31	4
1002 Fed Rcpts		22,401.8										
1005 GF/Prgm		8.4										
1007 I/A Rcpts		346.9										
1054 Empl Trng		448.1										
1108 Stat Desig		20.0										
1151 VoTech Ed		448.1										
Subtotal		23,673.3	18,062.3	26.6	5,324.6	252.3	7.5	0.0	0.0	143	31	4
***** Changes From FY2022 Authorized To FY2022 Management Plan *****												
Align Federal Authority with Division Needs												
LIT		0.0	1,659.5	9.5	-1,669.0	0.0	0.0	0.0	0.0	0	0	0
Transfer authority from services to cover anticipated personal services and travel costs. The remaining services authority is sufficient to cover anticipated expenditures.												
Transfer Authority from Unemployment Insurance to DETS Administration for Data Processing Unit												
Trout		-2,791.2	-1,682.0	0.0	-1,109.2	0.0	0.0	0.0	0.0	0	0	0
1002 Fed Rcpts		-2,791.2										
Transfer available federal receipt and expenditure authority from Unemployment Insurance to Employment and Training Services Administration to provide direct support to the DP IT component positions that are transferring from the Workforce Investment Board.												
Add Three Positions: 2 UI Tech 1s (07-6036, 07-6037), 1 Investigator 2 (07-6038)												
PosAdj		0.0	0.0	0.0	0.0	0.0	0.0	0.0	0.0	3	0	0
The Employment and Training Services Division establishes three positions to meet United States Department of Labor (USDOL) requirements and accomplish the mission of the Benefit Payment Control (BPC) section.												
The following positions are added:												
-UI Tech 1, (07-6036), range 14, located in Juneau												
-UI Tech 1, (07-6037), range 14, located in Juneau												
-Investigator 2, (07-6038), range 16, located in Juneau												
Transfer and Reclassify Unemployment Insurance Tech 1 (07-5804) from Unemployment Insurance to Workforce Development												
Trout		0.0	0.0	0.0	0.0	0.0	0.0	0.0	0.0	-1	0	0
Transfer Unemployment Insurance Tech 1 (07-5804) from Unemployment Insurance to Workforce Development. This Unemployment Insurance Tech 1 is												

Change Record Detail - Multiple Scenarios with Descriptions
Department of Labor and Workforce Development

Component: Unemployment Insurance (2276)
RDU: Employment and Training Services (646)

Scenario/Change Record Title	Trans Type	Totals	Personal Services	Travel	Services	Commodities	Capital Outlay	Grants, Benefits	Miscellaneous	Positions		NP
										PFT	PPT	
reclassified to an Employment Security Analyst 1 within the Workforce Development component.												
Transfer Accounting Tech 2 (07-5784) from Unemployment Insurance to DETS Admin												
	Trout	-97.9	-97.9	0.0	0.0	0.0	0.0	0.0	0.0	-1	0	0
1002 Fed Rcpts		-97.9										
Transfer Accounting Tech 2 (07-5784) with federal authority receipts to the Employment and Training Services Administrative Component and reclassify to an Accounting Tech 3. This transfer is in alignment with the division's needs.												
Change Three UI Tech 1 positions from Part Time to Full Time and Reclassify												
	PosAdj	0.0	0.0	0.0	0.0	0.0	0.0	0.0	0.0	3	-3	0
The following positions are changed from part time to full time and reclassified to meet the demands of COVID-related unemployment claims and investigations:												
UI Tech 1, (07-5007), range 14, located in Juneau to Investigator 2, range 16, located in Juneau												
UI Tech 1, (07-5751), range 14, located in Juneau to UI Tech 3, range 16 located in Juneau												
UI Tech 1, (07-5776), range 14, located in Anchorage to UI Tech 3, range 16 located in Fairbanks												
	Subtotal	20,784.2	17,941.9	36.1	2,546.4	252.3	7.5	0.0	0.0	147	28	4
***** Changes From FY2022 Management Plan To FY2023 Governor *****												
FY2023 Supervisory Employees Health Insurance, SBS, and Risk Management Rate Changes												
	SalAdj	49.9	49.9	0.0	0.0	0.0	0.0	0.0	0.0	0	0	0
1002 Fed Rcpts		47.2										
1007 I/A Rcpts		0.3										
1054 Empl Trng		1.2										
1151 VoTech Ed		1.2										
FY2023 Change Supervisory Employees (SS) Health Insurance from \$1,555 to \$1,685, SBS, and Risk Management Rates: \$49.9												
FY2023 Executive Employees Health Insurance, SBS, and Risk Management Rate Changes												
	SalAdj	-0.6	-0.6	0.0	0.0	0.0	0.0	0.0	0.0	0	0	0
1002 Fed Rcpts		-0.6										
FY2023 Change Executive Employees (EE) - Health Insurance from \$1,555 to \$1,685 per member, SBS, and Risk Management Rates: \$-0.6												
FY2023 General Government Unit SBS and Risk Management Rate Changes												
	SalAdj	8.7	8.7	0.0	0.0	0.0	0.0	0.0	0.0	0	0	0
1002 Fed Rcpts		8.2										
1007 I/A Rcpts		0.1										
1054 Empl Trng		0.2										
1151 VoTech Ed		0.2										

Change Record Detail - Multiple Scenarios with Descriptions
Department of Labor and Workforce Development

Component: Unemployment Insurance (2276)
RDU: Employment and Training Services (646)

Scenario/Change Record Title	Trans Type	Totals	Personal Services	Travel	Services	Commodities	Capital Outlay	Grants, Benefits	Miscellaneous	Positions		NP
										PFT	PPT	
FY2023 Change General Government Unit (GG, GP, GY, GZ) SBS and Risk Management Rates: \$8.7												
FY2023 PERS Actuarial Rate Adjustment to 24.79% Ch9 SLA2021 (SB55)												
	SalAdj	-564.1	-564.1	0.0	0.0	0.0	0.0	0.0	0.0	0	0	0
1002 Fed Rcpts		-538.5										
1005 GF/Prgm		-0.2										
1007 I/A Rcpts		-3.6										
1054 Empl Trng		-10.9										
1151 VoTech Ed		-10.9										
Includes: FY2023 Adjustment for PERS ARM Board Approved Rate of 24.79% (from 30.11%): \$-564.1												
FY2023 Salary and Benefit Adjustments												
	SalAdj	37.3	37.3	0.0	0.0	0.0	0.0	0.0	0.0	0	0	0
1002 Fed Rcpts		35.2										
1007 I/A Rcpts		0.1										
1054 Empl Trng		1.0										
1151 VoTech Ed		1.0										
Includes: FY2023 Supervisory Unit 1% COLA: \$23.2												
FY2023 SU BU - Supervisory Employees (SS) 1% COLA: \$14.1												
Align Federal Authority with Division Needs												
	Trin	2,844.0	40.0	0.0	2,804.0	0.0	0.0	0.0	0.0	0	0	0
1002 Fed Rcpts		2,844.0										
Available authority was previously transferred from Unemployment Insurance to Employment and Training Service Administration to allow for the transfer of the Data Processing unit from Management Services to Employment and Training Services. This transfer reverses the previous funding transfer, aligning division funding and expenditure authority with anticipated expenditures for FY2023.												
Delete One Non-Permanent College Intern Position (07-IN1903)												
	PosAdj	0.0	0.0	0.0	0.0	0.0	0.0	0.0	0.0	0	0	-1
Delete one non-permanent College Intern 2 position (07-IN1903), range 9, located in Anchorage.												
Change Two Positions from Part-Time to Full-Time to Meet Unemployment Insurance Needs												
	PosAdj	0.0	0.0	0.0	0.0	0.0	0.0	0.0	0.0	2	-2	0
Reclass an Unemployment Insurance Technician 1 to an Administrative Assistant 1 and change an Unemployment Insurance Technician 2, from part-time seasonal to full-time. This change allows Unemployment Insurance to meet the needs of Alaskans seeking unemployment insurance assistance.												

Change Record Detail - Multiple Scenarios with Descriptions
Department of Labor and Workforce Development

Component: Unemployment Insurance (2276)
RDU: Employment and Training Services (646)

Scenario/Change Record Title	Trans Type	Totals	Personal Services	Travel	Services	Commodities	Capital Outlay	Grants, Benefits	Miscellaneous	Positions		
										PFT	PPT	NP
-Admin Assistant 1 (07-5878), range 12, located in Fairbanks reclass from UI Tech 1 -UI Tech 2 (07-5838), range 15, located in Juneau from part-time seasonal to full-time												
	Totals	23,159.4	17,513.1	36.1	5,350.4	252.3	7.5	0.0	0.0	149	26	3

Line Item Detail (1676)
Department of Labor and Workforce Development
Travel

Component: Unemployment Insurance (2276)

Line Number	Line Name		FY2021 Actuals	FY2022 Management Plan	FY2023 Governor
2000	Travel		1.0	36.1	36.1
Object Class	Servicing Agency	Explanation	FY2021 Actuals	FY2022 Management Plan	FY2023 Governor
2000 Travel Detail Totals			1.0	36.1	36.1
2000	In-State Employee Travel	In-state employee travel to support the department's mission.	1.0	28.0	28.0
2002	Out of State Employee Travel	Out of state employee travel.	0.0	8.1	8.1

Line Item Detail (1676)
Department of Labor and Workforce Development
Services

Component: Unemployment Insurance (2276)

Line Number	Line Name		FY2021 Actuals	FY2022 Management Plan	FY2023 Governor
3000	Services		7,277.2	2,546.4	5,350.4
Object Class	Servicing Agency	Explanation	FY2021 Actuals	FY2022 Management Plan	FY2023 Governor
3000 Services Detail Totals			7,277.2	5,840.9	5,350.4
3000	Education Services	Training, education, and memberships.	29.2	32.5	32.5
3001	Financial Services	Financial services, including auditing and accounting, consulting, insurance, or interest expense.	356.1	360.0	120.0
3002	Legal and Judicial Services	Custody care, attorney fees, expert and non-expert witnesses, mediation services, transcription and recording services, case costs, and settlement fees.	26.7	47.0	26.7
3003	Information Technology	Information technology, including training, consulting, leases, and software licensing and maintenance.	1,355.3	774.8	626.1
3004	Telecommunications	Local, long distance, and cellular telephone charges, television, data/network, telecommunication equipment, and other wireless charges from outside vendors.	323.6	300.0	323.6
3006	Delivery Services	Freight, courier services, and postage.	14.4	18.0	14.4
3007	Advertising and Promotions	Advertising for regulation changes, board meetings, recruitments, or other public notices.	2.0	2.0	2.0
3008	Utilities	Electricity, heating fuel, water, sewage, recycling, heating fuel, trash, and confidential document and other disposal services.	17.4	15.0	17.4

Line Item Detail (1676)
Department of Labor and Workforce Development
Services

Component: Unemployment Insurance (2276)

Object Class		Servicing Agency	Explanation	FY2021 Actuals	FY2022 Management Plan	FY2023 Governor
3000 Services Detail Totals				7,277.2	5,840.9	5,350.4
3010	Equipment/Machinery		Machinery, furniture, and equipment purchase, repairs, maintenance, rentals, and leases.	79.6	49.0	79.6
3011	Other Services		Other services, including interpreters; consulting; print, copy, and graphic services; and safety services.	218.8	220.0	218.8
3012	Inter-Agency Federal Indirect Rate Allocation	Labor - DETS Administration (3116)	Indirect cost allocation for division purchasing, federal accounting reports, contracts, fiscal, and mail services provided by the Employment and Training Services Administration component.	21.5	22.0	22.0
3012	Inter-Agency Federal Indirect Rate Allocation	Labor - Management Services (335)	Indirect cost allocation for departmental purchasing, accounting, reports, personnel consultation and other services provided by Management Services.	42.1	45.0	45.0
3013	Inter-Agency Data Processing Operations Allocation	Labor - Data Processing (334)	Allocation for Data Processing network and support services.	207.2	80.9	80.9
3016	Inter-Agency Economic Development	Health - Department-wide	Reimbursable services agreement with Department of Health and Social Services for death certificates.	2.5	5.0	5.0
3016	Inter-Agency Economic Development	Labor - Labor Market Information (336)	Reimbursable services agreement with Labor Market Information for unemployment insurance actuarial research and related reports.	245.6	250.0	250.0
3016	Inter-Agency Economic Development	Labor - Workforce Services (2761)	Reimbursable services agreement with Workforce Services for re-employment services provided to UI claimants.	82.4	235.3	235.3
3016	Inter-Agency Economic Development	Labor - Labor Market Information (336)	Reimbursable services agreement with Labor Market Information for profiling services.	80.0	68.2	80.0

Line Item Detail (1676)
Department of Labor and Workforce Development
Services

Component: Unemployment Insurance (2276)

Object Class	Servicing Agency	Explanation	FY2021 Actuals	FY2022 Management Plan	FY2023 Governor	
3000 Services Detail Totals			7,277.2	5,840.9	5,350.4	
3017	Inter-Agency Information Technology Non-Telecommunications	Admin - Department-wide	Reimbursable services agreement with the Office of Information Technology rate for non-telecommunications support, including software and computer services.	542.7	596.7	614.0
3018	Inter-Agency Information Technology Telecommunications	Admin - Department-wide	Reimbursable services agreement with the Office of Information Technology for telecommunication support.	91.8	61.5	61.5
3021	Inter-Agency Mail	Admin - Department-wide	Reimbursable services agreement with Shared Services of Alaska for central mailroom support and services.	1,544.2	993.8	993.8
3022	Inter-Agency Human Resources	Admin - Department-wide	Reimbursable services agreement with the Division of Personnel and Labor Relations for human resources and personnel services.	101.3	115.2	101.3
3023	Inter-Agency Building Leases	Admin - Department-wide	State-owned facility space rent or other property leases.	1,089.8	765.7	842.7
3023	Inter-Agency Building Leases	Trans - Department-wide	State-owned facility space rent or other property leases.	190.5	133.7	102.0
3024	Inter-Agency Legal	Law - Department-wide	Reimbursable services agreement with the Department of Law for legal services.	80.0	80.0	80.0
3025	Inter-Agency Auditing	Admin - Department-wide	Reimbursable services agreement with the Department of Administration for auditing services, including federal compliance audits.	9.1	10.0	10.0
3026	Inter-Agency Insurance	Admin - Department-wide	Reimbursable services agreement with the Division of Risk Management for risk management insurance charges for leased	17.7	11.6	11.6

Line Item Detail (1676)
Department of Labor and Workforce Development
Services

Component: Unemployment Insurance (2276)

Object Class	Servicing Agency	Explanation	FY2021 Actuals	FY2022 Management Plan	FY2023 Governor
3000 Services Detail Totals			7,277.2	5,840.9	5,350.4
		buildings, repossessed properties, public official bonds, and overhead.			
3027	Inter-Agency Financial	Admin - Department-wide			
		Reimbursable services agreement with the Division of Finance for system services for State accounting and payroll (IRIS), and reporting (ALDER) systems.	14.2	24.6	24.6
3027	Inter-Agency Financial	Admin - Department-wide			
		Reimbursable services agreement with Shared Services of Alaska for travel and accounts payable services.	13.0	7.1	7.1
3029	Inter-Agency Education/Training	Labor - Data Processing (334)			
		Data Processing costs associated with TVEP & STEP tax collection efforts.	37.5	70.0	70.0
3030	Inter-Agency Hearing/Mediation	Admin - Department-wide			
		Reimbursable services agreement with Department of Administration for hearing and mediation services.	3.9	6.0	6.0
3030	Inter-Agency Hearing/Mediation	Admin - Department-wide			
		Reimbursable services agreement with the Department of Administration for hearing and mediation services related to CARES Act Pandemic Unemployment Assistance.	414.0	413.8	220.0
3037	State Equipment Fleet	Trans - Department-wide			
		State equipment fleet fixed cost services for equipment replacement, maintenance and fuel, both allowable and non-allowable.	23.1	26.5	26.5

Line Item Detail (1676)
Department of Labor and Workforce Development
Commodities

Component: Unemployment Insurance (2276)

Line Number	Line Name		FY2021 Actuals	FY2022 Management Plan	FY2023 Governor
4000	Commodities		865.4	252.3	252.3
Object Class	Servicing Agency	Explanation	FY2021 Actuals	FY2022 Management Plan	FY2023 Governor
4000 Commodities Detail Totals			865.4	252.3	252.3
4000	Business	General business supplies such as office consumables and computer equipment.	757.6	239.7	239.7
4002	Household/Institutional	Office supplies, supplies and consumables for public meetings, and cleaning products.	9.7	10.0	10.0
4004	Safety	Safety gear and protective clothing.	2.0	2.5	2.5
4015	Parts and Supplies	Parts and supplies.	0.0	0.1	0.1
4020	Equipment Fuel	State vehicle replacement	96.1	0.0	0.0

Line Item Detail (1676)
Department of Labor and Workforce Development
Capital Outlay

Component: Unemployment Insurance (2276)

Line Number	Line Name		FY2021 Actuals	FY2022 Management Plan	FY2023 Governor
5000	Capital Outlay		0.0	7.5	7.5
Object Class	Servicing Agency	Explanation	FY2021 Actuals	FY2022 Management Plan	FY2023 Governor
5000 Capital Outlay Detail Totals			0.0	7.5	7.5
5004	Equipment	Office equipment.	0.0	7.5	7.5

Line Item Detail (1676)
Department of Labor and Workforce Development
Grants, Benefits

Component: Unemployment Insurance (2276)

Line Number	Line Name		FY2021 Actuals	FY2022 Management Plan	FY2023 Governor
7000	Grants, Benefits		60,821.7	0.0	0.0
Object Class	Servicing Agency	Explanation	FY2021 Actuals	FY2022 Management Plan	FY2023 Governor
		7000 Grants, Benefits Detail Totals	60,821.7	0.0	0.0
7002	Benefits	Benefit payments for claims appealed under the Federal Emergency Management Agency's (FEMA) State of Alaska for Other Needs Assistance (ONA) supplemental payments for lost wages. FEMA-DR-4533-AK	60,821.7	0.0	0.0

Revenue Detail (1681)
Department of Labor and Workforce Development

Component: Unemployment Insurance (2276)

Revenue Type (OMB Fund Code) Revenue Source	Component	Comment	FY2021 Actuals	FY2022 Management Plan	FY2023 Governor
5002 Fed Rcpts (1002 Fed Rcpts)			95,310.8	36,470.1	27,031.1
5007 Federal Health and Human Services - Miscellaneous Grants		U.S. Department of Labor grant to support Unemployment Insurance program administration.	26,697.6	27,007.9	24,588.1
5007 Federal Health and Human Services - Miscellaneous Grants		U.S. Department of Labor grants related to the CARES Act to support Unemployment Insurance program administration.	7,332.3	8,778.8	2,443.0
5007 Federal Health and Human Services - Miscellaneous Grants		Federal Emergency Management Agency's (FEMA) State of Alaska for Other Needs Assistance (ONA) supplemental payments for lost wages. FEMA-DR-4533-AK	61,280.9	683.4	0.0
5005 GF/Prgm (1005 GF/Prgm)			0.0	8.4	8.2
5108 Program Receipts General Government - Charges for Services		Collections from non-state entities for the release of information.	0.0	8.4	8.2
5007 I/A Rcpts (1007 I/A Rcpts)			151.2	346.9	343.8
5301 Inter-Agency Receipts		Inter-agency receipts for service agreements not yet finalized	0.0	85.0	81.9
5301 Inter-Agency Receipts	E&ED - Department-wide	Reimbursable services agreement with Department of Education for Secure Access Management.	0.8	3.8	3.8
5301 Inter-Agency Receipts	Health - Department-wide	Reimbursable services agreements with Department of Health and Social Services for Secure Access Management.	13.0	46.2	46.2
5301 Inter-Agency Receipts	Labor - Labor Market Information (336)	Reimbursable services agreement with Labor Market Information for Secure Access Management.	0.7	0.0	0.0
5301 Inter-Agency Receipts	Labor - Workers' Compensation (344)	Reimbursable services agreement with Workers' Compensation for Secure Access Management.	1.4	5.9	5.9
5301 Inter-Agency Receipts	Labor - Workforce Development (3117)	Reimbursable services agreement with Workforce Development for	1.1	5.2	5.2

Revenue Detail (1681)
Department of Labor and Workforce Development

Component: Unemployment Insurance (2276)

Revenue Type (OMB Fund Code) Revenue Source	Component	Comment	FY2021 Actuals	FY2022 Management Plan	FY2023 Governor
5301 Inter-Agency Receipts	Labor - Workforce Services (2761)	Secure Access Management. Reimbursable service agreement with Workforce Services for release of confidential information.	90.1	77.8	77.8
5301 Inter-Agency Receipts	Law - Department-wide	Reimbursable services agreement with Department of Law for Secure Access Management.	1.2	5.2	5.2
5301 Inter-Agency Receipts	Rev - Department-wide	Reimbursable services agreement with Department of Revenue for Secure Access Management.	8.5	24.7	24.7
5301 Inter-Agency Receipts	Labor - Workforce Development (3117)	Reimbursable service agreement with Workforce Development for Workforce Innovation and Opportunity Act Rapid Response.	0.2	5.0	5.0
5301 Inter-Agency Receipts	Labor - Workforce Services (2761)	Reimbursable services agreement with Workforce Services for Secure Access Management.	2.6	11.1	11.1
5301 Inter-Agency Receipts	Rev - Department-wide	Reimbursable services agreement with Department of Revenue Child Support program for cross match with program records.	31.6	77.0	77.0
5108 Stat Desig (1108 Stat Desig)			5.2	20.0	20.0
5206 Statutory Designated Program Receipts - Contracts		Collections from non-state entities for Secure Access Management.	5.2	20.0	20.0

Inter-Agency Services (1682)
Department of Labor and Workforce Development

Component: Unemployment Insurance (2276)

				FY2021 Actuals	FY2022 Management Plan	FY2023 Governor
Component Totals				4,854.1	4,022.6	3,889.3
With Department of Labor and Workforce Development				716.3	771.4	783.2
With Department of Health				2.5	5.0	5.0
With Department of Administration				3,841.7	3,006.0	2,892.6
With Department of Transportation/Public Facilities				213.6	160.2	128.5
With Department of Law				80.0	80.0	80.0
Object Class	Servicing Agency	Explanation		FY2021 Actuals	FY2022 Management Plan	FY2023 Governor
3012	Inter-Agency Federal Indirect Rate Allocation	Labor - DETS Administration (3116)	Indirect cost allocation for division purchasing, federal accounting reports, contracts, fiscal, and mail services provided by the Employment and Training Services Administration component.	21.5	22.0	22.0
3012	Inter-Agency Federal Indirect Rate Allocation	Labor - Management Services (335)	Indirect cost allocation for departmental purchasing, accounting, reports, personnel consultation and other services provided by Management Services.	42.1	45.0	45.0
3013	Inter-Agency Data Processing Operations Allocation	Labor - Data Processing (334)	Allocation for Data Processing network and support services.	207.2	80.9	80.9
3016	Inter-Agency Economic Development	Health - Department-wide	Reimbursable services agreement with Department of Health and Social Services for death certificates.	2.5	5.0	5.0
3016	Inter-Agency Economic Development	Labor - Labor Market Information (336)	Reimbursable services agreement with Labor Market Information for unemployment insurance actuarial research and related reports.	245.6	250.0	250.0
3016	Inter-Agency Economic Development	Labor - Workforce Services (2761)	Reimbursable services agreement with Workforce Services for re-employment services provided to UI claimants.	82.4	235.3	235.3

Inter-Agency Services (1682)
Department of Labor and Workforce Development

Component: Unemployment Insurance (2276)

Object Class		Servicing Agency	Explanation	FY2021 Actuals	FY2022 Management Plan	FY2023 Governor
3016	Inter-Agency Economic Development	Labor - Labor Market Information (336)	Reimbursable services agreement with Labor Market Information for profiling services.	80.0	68.2	80.0
3017	Inter-Agency Information Technology Non-Telecommunications	Admin - Department-wide	Reimbursable services agreement with the Office of Information Technology rate for non-telecommunications support, including software and computer services.	542.7	596.7	614.0
3018	Inter-Agency Information Technology Telecommunications	Admin - Department-wide	Reimbursable services agreement with the Office of Information Technology for telecommunication support.	91.8	61.5	61.5
3021	Inter-Agency Mail	Admin - Department-wide	Reimbursable services agreement with Shared Services of Alaska for central mailroom support and services.	1,544.2	993.8	993.8
3022	Inter-Agency Human Resources	Admin - Department-wide	Reimbursable services agreement with the Division of Personnel and Labor Relations for human resources and personnel services.	101.3	115.2	101.3
3023	Inter-Agency Building Leases	Admin - Department-wide	State-owned facility space rent or other property leases.	1,089.8	765.7	842.7
3023	Inter-Agency Building Leases	Trans - Department-wide	State-owned facility space rent or other property leases.	190.5	133.7	102.0
3024	Inter-Agency Legal	Law - Department-wide	Reimbursable services agreement with the Department of Law for legal services.	80.0	80.0	80.0
3025	Inter-Agency Auditing	Admin - Department-wide	Reimbursable services agreement with the Department of Administration for auditing services, including federal compliance audits.	9.1	10.0	10.0
3026	Inter-Agency Insurance	Admin - Department-wide	Reimbursable services agreement with the Division of Risk Management for risk management insurance charges for leased	17.7	11.6	11.6

Inter-Agency Services (1682)
Department of Labor and Workforce Development

Component: Unemployment Insurance (2276)

Object Class		Servicing Agency	Explanation	FY2021 Actuals	FY2022 Management Plan	FY2023 Governor
3027	Inter-Agency Financial	Admin - Department-wide	buildings, repossessed properties, public official bonds, and overhead. Reimbursable services agreement with the Division of Finance for system services for State accounting and payroll (IRIS), and reporting (ALDER) systems.	14.2	24.6	24.6
3027	Inter-Agency Financial	Admin - Department-wide	Reimbursable services agreement with Shared Services of Alaska for travel and accounts payable services.	13.0	7.1	7.1
3029	Inter-Agency Education/Training	Labor - Data Processing (334)	Data Processing costs associated with TVEP & STEP tax collection efforts.	37.5	70.0	70.0
3030	Inter-Agency Hearing/Mediation	Admin - Department-wide	Reimbursable services agreement with Department of Administration for hearing and mediation services.	3.9	6.0	6.0
3030	Inter-Agency Hearing/Mediation	Admin - Department-wide	Reimbursable services agreement with the Department of Administration for hearing and mediation services related to CARES Act Pandemic Unemployment Assistance.	414.0	413.8	220.0
3037	State Equipment Fleet	Trans - Department-wide	State equipment fleet fixed cost services for equipment replacement, maintenance and fuel, both allowable and non-allowable.	23.1	26.5	26.5

Personal Services Expenditure Detail
Department of Labor and Workforce Development

Scenario: FY2023 Governor (18673)
Component: Unemployment Insurance (2276)
RDU: Employment and Training Services (646)

PCN	Job Class Title	Time Status	Retire Code	Barg Unit	Location	Salary Sched	Range / Step	Comp Months	Split / Count	Annual Salaries	COLA	Premium Pay	Annual Benefits	Total Costs	UGF Amount
07-4100	Investigator 2	FT	A	GP	Anchorage	200	16O / P	12.0		80,222	0	0	48,688	128,910	0
07-4101	Investigator 2	FT	A	GP	Anchorage	200	16N	12.0		76,362	0	0	47,249	123,611	0
07-4103	Office Assistant 1	FT	A	GP	Juneau	205	8B / C	12.0		35,011	0	0	31,833	66,844	0
07-4515	Investigator 2	FT	A	GP	Juneau	205	16J / K	12.0		72,756	0	0	45,905	118,661	0
07-4516	Investigator 2	FT	A	GP	Fairbanks	99	16R / S	12.0		93,080	0	0	53,482	146,562	0
07-5005	Spvr Ui Tax	FT	A	SS	Juneau	99	23N	12.0		134,891	1,852	0	70,669	207,412	0
07-5006	Administrative Assistant 3	FT	A	GP	Juneau	99	15O	12.0		77,616	0	0	47,717	125,333	0
07-5007	Investigator 2	FT	A	GP	Juneau	205	16C / D	12.0		60,275	0	0	41,252	101,527	0
07-5008	Ui Tech 3	FT	A	SS	Juneau	205	16J	12.0		73,798	1,013	0	47,893	122,704	0
07-5011	Accounting Technician 2	FT	A	GP	Juneau	205	14A / B	12.0		48,906	0	0	37,013	85,919	0
07-5012	Accounting Technician 3	FT	A	SS	Juneau	205	16C / D	12.0		65,832	904	0	44,923	111,659	0
07-5014	Ui Tech 1	PT	A	GP	Juneau	205	14B / C	11.0		46,118	0	0	34,409	80,527	0
07-5017	Accounting Technician 3	FT	A	GG	Juneau	205	16M	12.0		76,889	0	0	47,446	124,335	0
07-5018	Supervisor, Audit Operations	FT	A	SS	Juneau	99	19R	12.0		120,078	1,648	0	65,146	186,872	0
07-5022	Accounting Technician 4	FT	A	SS	Anchorage	99	18O / P	12.0		98,270	1,349	0	57,016	156,635	0
07-5026	Field Auditor 1	FT	A	GP	Fairbanks	203	16D / E	12.0		61,865	0	0	41,845	103,710	0
07-5027	Field Auditor 1	FT	A	GP	Anchorage	200	16A / B	12.0		53,599	0	0	38,763	92,362	0
07-5028	Field Auditor 1	FT	A	GP	Anchorage	200	16A / B	12.0		53,794	0	0	38,836	92,630	0
07-5035	Office Assistant 2	FT	A	GP	Juneau	205	10D / E	12.0		41,467	0	0	34,240	75,707	0
07-5037	Ui Tech 1	FT	A	GP	Juneau	205	14C / D	12.0		51,409	0	0	37,947	89,356	0
07-5039	Employment Security Analyst 2	FT	A	GP	Juneau	205	17C / D	12.0		63,408	0	0	42,420	105,828	0
07-5042	Investigator 3	FT	A	SS	Anchorage	99	18O	12.0		94,848	1,302	0	55,741	151,891	0
07-5045	Accounting Technician 2	FT	A	GP	Juneau	205	14G / J	12.0		59,412	0	0	40,930	100,342	0
07-5046	Accounting Technician 1	FT	A	GP	Juneau	205	12C / D	12.0		45,034	0	0	35,570	80,604	0
07-5051	Ui Tech 1	PT	A	GP	Anchorage	200	14B / C	11.0		44,511	0	0	33,810	78,321	0
07-5055	Accounting Technician 4	FT	A	SS	Juneau	205	18J	12.0		84,490	1,160	0	51,879	137,529	0
07-5060	Ui Tech 3	FT	A	SS	Juneau	205	16J / K	12.0		74,795	1,027	0	48,265	124,087	0
07-5114	Ui Claim Mgr 2	FT	A	SS	Anchorage	99	20O	12.0		116,251	1,596	0	63,720	181,567	0
07-5117	Ui Tech 2	FT	A	GP	Anchorage	200	15E / F	12.0		57,384	0	0	40,174	97,558	0
07-5121	Ui Tech 2	FT	A	GP	Anchorage	200	15G / J	12.0		60,855	0	0	41,468	102,323	0
07-5124	Ui Tech 1	PT	A	GP	Fairbanks	203	14A / B	11.0		43,922	0	0	33,590	77,512	0
07-5128	Administrative Assistant 2	FT	A	GP	Anchorage	99	14R / S	12.0		77,932	0	0	47,834	125,766	0
07-5138	Ui Tech 1	FT	A	GP	Juneau	205	14E / F	12.0		55,168	0	0	39,348	94,516	0
07-5141	Ui Tech 1	FT	A	GP	Anchorage	200	14A	12.0		45,533	0	0	35,756	81,289	0
07-5145	Ui Tech 2	FT	A	GP	Anchorage	200	15J / K	12.0		64,060	0	0	42,663	106,723	0
07-5150	Investigator 2	FT	A	GP	Anchorage	200	16D / E	12.0		58,199	0	0	40,478	98,677	0
07-5159	Employment Security	FT	A	GP	Juneau	205	18J / K	12.0		82,721	0	0	49,620	132,341	0

Note: If a position is split, an asterisk (*) will appear in the Split/Count column. If the split position is also counted in the component, two asterisks (**) will appear in this column. [No valid job title] appearing in the Job Class Title indicates that the PCN has an invalid class code or invalid range for the class code effective date of this scenario.

Personal Services Expenditure Detail
Department of Labor and Workforce Development

Scenario: FY2023 Governor (18673)
Component: Unemployment Insurance (2276)
RDU: Employment and Training Services (646)

PCN	Job Class Title	Time Status	Retire Code	Barg Unit	Location	Salary Sched	Range / Step	Comp Months	Split / Count	Annual Salaries	COLA	Premium Pay	Annual Benefits	Total Costs	UGF Amount
	Analyst 3														
07-5163	Ui Claim Mgr 2	FT	A	SS	Fairbanks	203	20B / C	12.0		82,680	1,135	0	51,204	135,019	0
07-5173	Ui Q/C Auditor	FT	A	GP	Juneau	205	15C / D	12.0		55,595	0	0	39,507	95,102	0
07-5189	Appeals Officer 3	FT	A	SS	Juneau	205	21N	12.0		117,667	1,615	0	64,248	183,530	0
07-5201	Accounting Technician 2	FT	A	GP	Juneau	205	14A / B	12.0		49,452	0	0	37,217	86,669	0
07-5210	Ui Tech 3	FT	A	SS	Juneau	205	16C / D	12.0		66,238	909	0	45,075	112,222	0
07-5215	Ui Tech 3	FT	A	SS	Anchorage	200	16M / N	12.0		78,194	1,073	0	49,532	128,799	0
07-5223	Ui Tech 1	FT	A	GP	Juneau	205	14A / B	12.0		48,906	0	0	37,013	85,919	0
07-5233	Field Auditor 2	FT	A	GP	Anchorage	200	17C / D	12.0		61,666	0	0	41,770	103,436	0
07-5248	Field Auditor 1	FT	A	GP	Juneau	205	16D / E	12.0		62,683	0	0	42,150	104,833	0
07-5249	Accounting Technician 2	FT	A	GP	Juneau	205	14C / D	12.0		52,607	0	0	38,393	91,000	0
07-5253	Employment Security	FT	A	GP	Juneau	205	15A / B	12.0		52,371	0	0	38,305	90,676	0
	Analyst 1														
07-5274	Accounting Technician 2	FT	A	GP	Anchorage	200	14A / B	12.0		46,573	0	0	36,144	82,717	0
07-5284	Ui Tech 1	FT	A	GP	Juneau	205	14E / F	12.0		56,277	0	0	39,761	96,038	0
07-5297	Ui Tech 1	PT	A	GP	Anchorage	200	14C	11.0		44,616	0	0	33,849	78,465	0
07-5302	Ui Tech 1	FT	A	GP	Anchorage	99	14P	12.0		71,721	0	0	45,519	117,240	0
07-5313	Ui Tech 3	FT	A	SS	Anchorage	200	16K / L	12.0		74,628	1,025	0	48,203	123,856	0
07-5314	Employment Security	FT	A	GP	Juneau	205	17F / G	12.0		71,398	0	0	45,398	116,796	0
	Analyst 2														
07-5317	Ui Tech 1	FT	A	GP	Juneau	205	14B / C	12.0		50,184	0	0	37,490	87,674	0
07-5337	Ui Tech 1	FT	A	GP	Anchorage	200	14F / G	12.0		54,755	0	0	39,194	93,949	0
07-5351	Asst Dir Emp Se	FT	A	SS	Anchorage	99	22M / N	12.0		124,137	1,704	0	66,660	192,501	0
07-5375	Ui Tech 3	FT	A	SS	Anchorage	99	16R	12.0		93,454	1,283	0	55,221	149,958	0
07-5418	Field Auditor 1	FT	A	GP	Juneau	205	16C / D	12.0		60,275	0	0	41,252	101,527	0
07-5420	Ui Tech 1	FT	A	GP	Juneau	205	14K	12.0		63,239	0	0	42,357	105,596	0
07-5449	Employment Security	FT	A	SS	Juneau	205	18C / D	12.0		75,601	1,038	0	48,565	125,204	0
	Analyst 3														
07-5457	Accounting Technician 2	FT	A	GP	Juneau	205	14K / L	12.0		63,665	0	0	42,516	106,181	0
07-5464	Field Auditor 1	FT	A	GP	Wasilla	200	16E / F	12.0		61,755	0	0	41,804	103,559	0
07-5469	Ui Tech 3	FT	A	SS	Juneau	205	16N	12.0		83,866	1,151	0	51,647	136,664	0
07-5477	Ui Tech 2	FT	A	GP	Juneau	205	15A / B	12.0		52,371	0	0	38,305	90,676	0
07-5478	Ui Tech 1	FT	A	GP	Anchorage	200	14C / D	12.0		48,989	0	0	37,044	86,033	0
07-5480	Employment Security	FT	A	GP	Anchorage	200	17K / L	12.0		75,953	0	0	47,097	123,050	0
	Analyst 2														
07-5482	Emp/Ui Tech Mgr	FT	A	SS	Juneau	205	20L / M	12.0		103,986	1,428	0	59,147	164,561	0
07-5502	Emp/Ui Tech Mgr	FT	A	SS	Juneau	99	20N	12.0		110,172	1,512	0	61,453	173,137	0
07-5515	Ui Tech 1	FT	A	GP	Fairbanks	203	14J / K	12.0		60,262	0	0	41,247	101,509	0
07-5519	Ui Tech 1	FT	A	GP	Anchorage	200	14M	12.0		64,214	0	0	42,720	106,934	0

Note: If a position is split, an asterisk (*) will appear in the Split/Count column. If the split position is also counted in the component, two asterisks (**) will appear in this column.
 [No valid job title] appearing in the Job Class Title indicates that the PCN has an invalid class code or invalid range for the class code effective date of this scenario.

Personal Services Expenditure Detail
Department of Labor and Workforce Development

Scenario: FY2023 Governor (18673)
Component: Unemployment Insurance (2276)
RDU: Employment and Training Services (646)

PCN	Job Class Title	Time Status	Retire Code	Barg Unit	Location	Salary Sched	Range / Step	Comp Months	Split / Count	Annual Salaries	COLA	Premium Pay	Annual Benefits	Total Costs	UGF Amount
07-5539	Field Auditor 1	FT	A	GP	Fairbanks	203	16B / C	12.0		56,989	0	0	40,027	97,016	0
07-5540	Field Auditor 1	FT	A	GP	Anchorage	200	16L	12.0		71,643	0	0	45,490	117,133	0
07-5543	Ui Tech 1	FT	A	GP	Juneau	205	14B / C	12.0		50,170	0	0	37,485	87,655	0
07-5555	Accounting Technician 2	FT	A	GP	Anchorage	200	14B / C	12.0		48,146	0	0	36,730	84,876	0
07-5557	Employment Security Analyst 3	FT	A	SS	Anchorage	200	18E / F	12.0		81,887	1,124	0	50,909	133,920	0
07-5560	Publications Specialist 3	FT	A	GP	Juneau	205	19L	12.0		91,865	0	0	53,029	144,894	0
07-5561	Ui Tech 2	FT	A	GP	Juneau	205	15C / D	12.0		56,482	0	0	39,838	96,320	0
07-5562	Ui Tech 3	FT	A	SS	Juneau	205	16K / L	12.0		78,439	1,077	0	49,623	129,139	0
07-5570	Ui Q/C Auditor	FT	A	GP	Anchorage	200	15N	12.0		71,273	0	0	45,352	116,625	0
07-5586	Ui Tech 1	FT	A	GP	Juneau	205	14A / B	12.0		48,906	0	0	37,013	85,919	0
07-5589	Ui Tech 1	PT	A	GP	Anchorage	200	14A / B	11.0		42,648	0	0	33,115	75,763	0
07-5590	Accounting Technician 2	FT	A	GP	Juneau	205	14L	12.0		65,286	0	0	43,120	108,406	0
07-5599	Ui Tech 1	FT	A	GP	Anchorage	200	14D / E	12.0		51,090	0	0	37,828	88,918	0
07-5601	Ui Tech 1	FT	A	GP	Anchorage	200	14D / E	12.0		51,090	0	0	37,828	88,918	0
07-5606	Ui Tech 1	PT	A	GP	Fairbanks	203	14B / C	11.0		45,028	0	0	34,003	79,031	0
07-5607	Ui Tech 1	FT	A	GP	Anchorage	200	14K	12.0		60,236	0	0	41,237	101,473	0
07-5614	Ui Q/C Auditor	FT	A	GP	Anchorage	200	15B / C	12.0		51,619	0	0	38,025	89,644	0
07-5622	Accounting Technician 2	FT	A	GP	Juneau	205	14K / L	12.0		64,433	0	0	42,802	107,235	0
07-5624	Administrative Assistant 2	FT	A	GP	Juneau	205	14A / B	12.0		48,906	0	0	37,013	85,919	0
07-5626	Ui Q/C Auditor	FT	A	GP	Fairbanks	203	15D / E	12.0		57,392	0	0	40,177	97,569	0
07-5643	Ui Tech 1	PT	A	GP	Anchorage	200	14A / B	11.0		42,648	0	0	33,115	75,763	0
07-5654	Employment Security Analyst 3	FT	A	GP	Juneau	205	18A / B	12.0		63,653	0	0	42,511	106,164	0
07-5659	Employment Security Analyst 3	FT	A	GP	Juneau	205	18E / F	12.0		73,962	0	0	46,354	120,316	0
07-5660	Ui Tech 1	FT	A	GP	Anchorage	200	14C / D	12.0		49,957	0	0	37,405	87,362	0
07-5665	Ui Tech 1	FT	A	GP	Juneau	205	14A / B	12.0		48,906	0	0	37,013	85,919	0
07-5666	Ui Tech 1	FT	A	GP	Juneau	205	14K / L	12.0		64,518	0	0	42,834	107,352	0
07-5672	Ui Q/C Spvr	FT	A	SS	Juneau	205	19N / O	12.0		104,462	1,434	0	59,325	165,221	0
07-5678	Ui Tech 1	FT	A	GP	Anchorage	200	14C / D	12.0		48,989	0	0	37,044	86,033	0
07-5680	Field Auditor 1	FT	A	GP	Wasilla	200	16B / C	12.0		55,334	0	0	39,410	94,744	0
07-5681	Field Auditor 2	FT	A	SS	Anchorage	200	17B / C	12.0		64,904	891	0	44,578	110,373	0
07-5682	Ui Tech 1	PT	A	GP	Juneau	205	14B / C	11.0		46,118	0	0	34,409	80,527	0
07-5689	Ui Q/C Auditor	FT	A	GP	Juneau	205	15E / F	12.0		60,275	0	0	41,252	101,527	0
07-5694	Employment Security Analyst 2	FT	A	GP	Juneau	99	17N / O	12.0		87,998	0	0	51,587	139,585	0
07-5711	Ui Tech 1	FT	A	GP	Juneau	99	14N / O	12.0		71,198	0	0	45,324	116,522	0
07-5712	Ui Tech 2	FT	A	GP	Juneau	205	15A / B	12.0		52,512	0	0	38,358	90,870	0

Note: If a position is split, an asterisk (*) will appear in the Split/Count column. If the split position is also counted in the component, two asterisks (**) will appear in this column. [No valid job title] appearing in the Job Class Title indicates that the PCN has an invalid class code or invalid range for the class code effective date of this scenario.

Personal Services Expenditure Detail
Department of Labor and Workforce Development

Scenario: FY2023 Governor (18673)
Component: Unemployment Insurance (2276)
RDU: Employment and Training Services (646)

PCN	Job Class Title	Time Status	Retire Code	Barg Unit	Location	Salary Sched	Range / Step	Comp Months	Split / Count	Annual Salaries	COLA	Premium Pay	Annual Benefits	Total Costs	UGF Amount
07-5713	Ui Tech 1	FT	A	GP	Juneau	205	14B / C	12.0		49,839	0	0	37,361	87,200	0
07-5714	Ui Q/C Auditor	FT	A	GP	Fairbanks	203	15M / N	12.0		72,837	0	0	45,935	118,772	0
07-5715	Ui Tech 1	PT	A	GP	Juneau	205	14A / B	11.0		44,785	0	0	33,912	78,697	0
07-5717	Employment Security Analyst 3	FT	A	GP	Juneau	205	18C / D	12.0		69,303	0	0	44,617	113,920	0
07-5720	Ui Tech 1	PT	A	GP	Juneau	205	14A / B	11.0		44,785	0	0	33,912	78,697	0
07-5721	Employment Security Analyst 2	FT	A	GP	Juneau	205	17J	12.0		75,387	0	0	46,886	122,273	0
07-5724	Employment Security Analyst 3	FT	A	SS	Juneau	99	18O	12.0		106,993	1,469	0	60,268	168,730	0
07-5725	Ui Tech 1	PT	A	GP	Anchorage	200	14L	11.0		57,003	0	0	38,467	95,470	0
07-5727	Field Auditor 1	FT	A	GP	Juneau	205	16C / D	12.0		59,719	0	0	41,045	100,764	0
07-5738	Ui Tech 1	FT	A	GP	Anchorage	200	14K	12.0		60,236	0	0	41,237	101,473	0
07-5739	Field Auditor 1	FT	A	GP	Kenai	200	16K / L	12.0		70,795	0	0	45,174	115,969	0
07-5747	Employment Security Analyst 2	FT	A	GP	Juneau	205	17F / G	12.0		71,050	0	0	45,269	116,319	0
07-5751	Ui Tech 3	FT	A	SS	Juneau	205	16D / E	12.0		67,246	923	0	45,451	113,620	0
07-5757	Ui Tech 2	FT	A	GP	Fairbanks	203	15E / F	12.0		59,354	0	0	40,909	100,263	0
07-5763	Ui Tech 2	FT	A	GP	Juneau	205	15K / L	12.0		68,511	0	0	44,322	112,833	0
07-5764	Ui Tech 1	FT	A	GP	Fairbanks	203	14A / B	12.0		47,964	0	0	36,662	84,626	0
07-5766	Employment Security Analyst 3	FT	A	SS	Juneau	205	18F	12.0		87,107	1,196	0	52,855	141,158	0
07-5767	Employment Security Analyst 3	FT	A	GP	Juneau	205	18J	12.0		80,652	0	0	48,848	129,500	0
07-5768	Appeals Officer 2	FT	A	GP	Juneau	205	19N	12.0		97,949	0	0	55,297	153,246	0
07-5769	Appeals Officer 2	FT	A	GP	Juneau	205	19K / L	12.0		91,504	0	0	52,894	144,398	0
07-5776	Ui Tech 3	FT	A	SS	Fairbanks	203	16D / E	12.0		65,671	902	0	44,863	111,436	0
07-5780	Investigator 2	FT	A	GP	Anchorage	99	16O / P	12.0		79,942	0	0	48,584	128,526	0
07-5783	Ui Claim Mgr 2	FT	A	SS	Juneau	205	20J / K	12.0		96,988	1,331	0	56,538	154,857	0
07-5785	Ui Tech 1	FT	A	GP	Anchorage	200	14K / L	12.0		61,211	0	0	41,601	102,812	0
07-5787	Ui Tech 1	PT	A	GP	Juneau	205	14A / B	11.0		44,785	0	0	33,912	78,697	0
07-5813	Appeals Officer 1	PT	A	GP	Juneau	205	17B / C	11.0		57,135	0	0	38,516	95,651	0
07-5816	Employment Security Analyst 2	FT	A	GP	Juneau	205	17L	12.0		80,379	0	0	48,747	129,126	0
07-5817	Ui Tech 1	FT	A	GP	Juneau	205	14C / D	12.0		51,472	0	0	37,970	89,442	0
07-5820	Ui Tech 1	PT	A	GP	Juneau	205	14A / B	11.0		44,785	0	0	33,912	78,697	0
07-5821	Administrative Assistant 1	FT	A	GP	Juneau	205	12A / B	12.0		42,866	0	0	34,762	77,628	0
07-5832	Accounting Technician 1	FT	A	GP	Juneau	205	12C / D	12.0		45,022	0	0	35,566	80,588	0
07-5833	Ui Tech 1	FT	A	GP	Anchorage	200	14K	12.0		60,236	0	0	41,237	101,473	0

Note: If a position is split, an asterisk (*) will appear in the Split/Count column. If the split position is also counted in the component, two asterisks (**) will appear in this column. [No valid job title] appearing in the Job Class Title indicates that the PCN has an invalid class code or invalid range for the class code effective date of this scenario.

Personal Services Expenditure Detail
Department of Labor and Workforce Development

Scenario: FY2023 Governor (18673)
Component: Unemployment Insurance (2276)
RDU: Employment and Training Services (646)

PCN	Job Class Title	Time Status	Retire Code	Barg Unit	Location	Salary Sched	Range / Step	Comp Months	Split / Count	Annual Salaries	COLA	Premium Pay	Annual Benefits	Total Costs	UGF Amount
07-5838	Ui Tech 2	FT	A	GP	Juneau	205	15A / B	12.0		52,371	0	0	38,305	90,676	0
07-5840	Ui Tech 1	FT	A	GP	Juneau	205	14B / C	12.0		50,889	0	0	37,753	88,642	0
07-5846	Ui Q/C Auditor	FT	A	GP	Anchorage	200	15O	12.0		73,593	0	0	46,217	119,810	0
07-5854	Ui Tech 2	FT	A	GP	Juneau	205	15B / C	12.0		53,049	0	0	38,558	91,607	0
07-5857	Ui Tech 1	FT	A	GP	Anchorage	99	14R	12.0		76,830	0	0	47,424	124,254	0
07-5863	Ui Tech 1	FT	A	GG	Anchorage	200	14L / M	12.0		63,319	0	0	42,387	105,706	0
07-5869	Ui Tech 1	PT	A	GP	Anchorage	200	14B / C	11.0		43,313	0	0	33,363	76,676	0
07-5872	Ui Tech 1	FT	A	GP	Juneau	205	14A / B	12.0		48,906	0	0	37,013	85,919	0
07-5875	Ui Tech 1	PT	A	GP	Juneau	205	14B / C	11.0		46,629	0	0	34,600	81,229	0
07-5878	Administrative Assistant 1	FT	A	GP	Fairbanks	203	12B / C	12.0		43,716	0	0	35,079	78,795	0
07-5883	Ui Tech 1	FT	A	GP	Juneau	205	14B / C	12.0		50,889	0	0	37,753	88,642	0
07-5884	Ui Tech 1	FT	A	GP	Juneau	205	14A / B	12.0		48,838	0	0	36,988	85,826	0
07-5898	Ui Tech 1	FT	A	GP	Juneau	205	14A / B	12.0		48,906	0	0	37,013	85,919	0
07-5901	Employment Security Analyst 3	FT	A	SS	Juneau	99	18N	12.0		103,149	1,416	0	58,835	163,400	0
07-5917	Ui Tech 1	FT	A	GP	Anchorage	200	14D / E	12.0		51,090	0	0	37,828	88,918	0
07-5921	Ui Tech 2	FT	A	GP	Juneau	205	15A / B	12.0		52,371	0	0	38,305	90,676	0
07-5922	Emp/Ui Tech Mgr	FT	A	SS	Juneau	205	20F	12.0		93,454	1,283	0	55,221	149,958	0
07-5923	Ui Tech 1	FT	A	GP	Juneau	205	14B / C	12.0		51,027	0	0	37,804	88,831	0
07-5924	Employment Security Analyst 3	FT	A	SS	Juneau	205	18J / K	12.0		86,334	1,185	0	52,567	140,086	0
07-5944	Ui Tech 3	FT	A	SS	Anchorage	200	16N	12.0		79,872	1,096	0	50,158	131,126	0
07-5952	Ui Tech 1	FT	A	GP	Juneau	205	14A / B	12.0		48,906	0	0	37,013	85,919	0
07-5966	Ui Tech 2	FT	A	GP	Anchorage	200	15L / M	12.0		68,038	0	0	44,146	112,184	0
07-5967	Ui Tech 1	PT	A	GP	Juneau	205	14B / C	11.0		46,160	0	0	34,425	80,585	0
07-5986	Employment Security Analyst 2	FT	A	GP	Anchorage	200	17B / C	12.0		59,598	0	0	40,999	100,597	0
07-6014	Ui Tech 1	PT	A	GP	Anchorage	200	14C / D	11.0		44,782	0	0	33,911	78,693	0
07-6015	Ui Tech 1	PT	A	GP	Anchorage	200	14C / D	11.0		44,782	0	0	33,911	78,693	0
07-6017	Ui Tech 1	PT	A	GP	Anchorage	200	14C / D	11.0		44,782	0	0	33,911	78,693	0
07-6021	Ui Tech 1	PT	A	GP	Juneau	205	14A / B	11.0		44,785	0	0	33,912	78,697	0
07-6023	Ui Tech 1	PT	A	GP	Juneau	205	14A / B	11.0		44,785	0	0	33,912	78,697	0
07-6024	Ui Tech 1	PT	A	GP	Juneau	205	14A / B	11.0		45,058	0	0	34,014	79,072	0
07-6025	Ui Tech 1	PT	A	GP	Juneau	205	14A / B	11.0		44,785	0	0	33,912	78,697	0
07-6026	Ui Tech 1	PT	A	GP	Juneau	205	14B / C	11.0		46,118	0	0	34,409	80,527	0
07-6027	Ui Tech 1	PT	A	GP	Juneau	205	14A / B	11.0		44,785	0	0	33,912	78,697	0
07-6036	Ui Tech 1	FT	A	GP	Juneau	205	14B / C	12.0		49,853	0	0	37,367	87,220	0
07-6037	Ui Tech 1	FT	A	GP	Juneau	205	14A / B	12.0		49,083	0	0	37,079	86,162	0
07-6038	Investigator 2	FT	A	GP	Juneau	205	16C / D	12.0		60,182	0	0	41,217	101,399	0

Note: If a position is split, an asterisk (*) will appear in the Split/Count column. If the split position is also counted in the component, two asterisks (**) will appear in this column. [No valid job title] appearing in the Job Class Title indicates that the PCN has an invalid class code or invalid range for the class code effective date of this scenario.

Personal Services Expenditure Detail
Department of Labor and Workforce Development

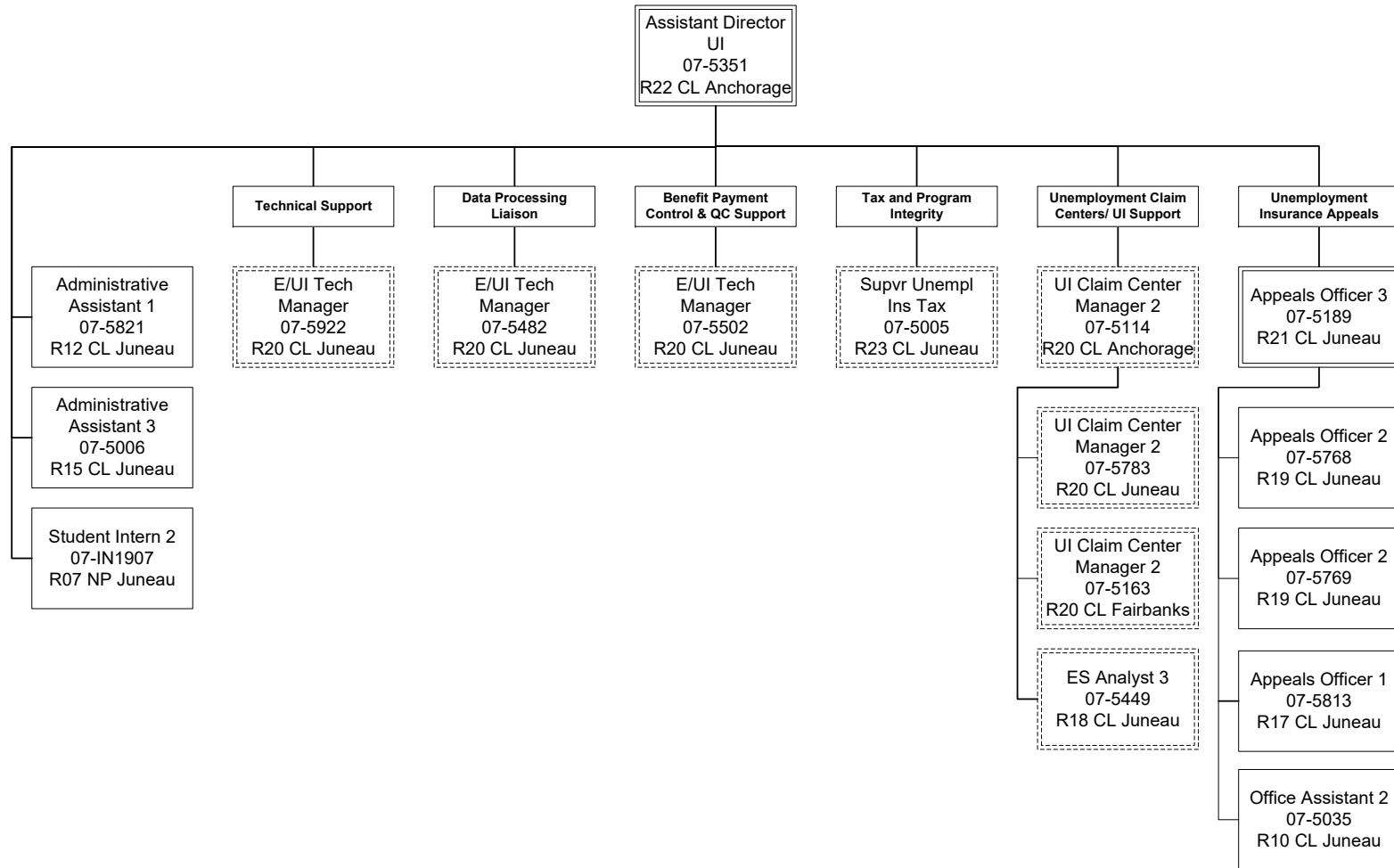
Scenario: FY2023 Governor (18673)
Component: Unemployment Insurance (2276)
RDU: Employment and Training Services (646)

PCN	Job Class Title	Time Status	Retire Code	Barg Unit	Location	Salary Sched	Range / Step	Comp Months	Split / Count	Annual Salaries	COLA	Premium Pay	Annual Benefits	Total Costs	UGF Amount
07-IN1903	College Intern 2	NP	N	EE	Anchorage	N00	9A / B	12.0		0	0	0	0	0	0
07-IN1904	College Intern 2	NP	N	EE	Juneau	N05	9A / B	12.0		35,952	0	0	3,466	39,418	0
07-IN1905	College Intern 2	NP	A	EE	Anchorage	N00	9A / B	12.0		34,593	0	0	3,335	37,928	0
07-IN1907	Student Intern 2	NP	N	EE	Juneau	N05	7A / B	12.0		32,234	0	0	3,107	35,341	0
21-3054	Employment Security Analyst 2	FT	A	GP	Juneau	205	17B / C	12.0		62,405	0	0	42,046	104,451	0
													Total Salary Costs:	11,303,595	
													Total COLA:	41,051	
													Total Premium Pay:	0	
													Total Benefits:	7,484,412	
													Total Pre-Vacancy:	18,829,058	
													Minus Vacancy Adjustment of 6.99%:	(1,315,958)	
													Total Post-Vacancy:	17,513,100	
													Plus Lump Sum Premium Pay:	0	
													Personal Services Line 100:	17,513,100	

PCN Funding Sources:	Pre-Vacancy	Post-Vacancy	Percent
1002 Federal Receipts	17,984,751	16,727,801	95.52%
1005 General Fund/Program Receipts	5,386	5,010	0.03%
1007 Interagency Receipts	120,381	111,968	0.64%
1054 State Employment & Training Program	359,270	334,161	1.91%
1151 Technical Vocational Education Program Account	359,270	334,161	1.91%
Total PCN Funding:	18,829,058	17,513,100	100.00%

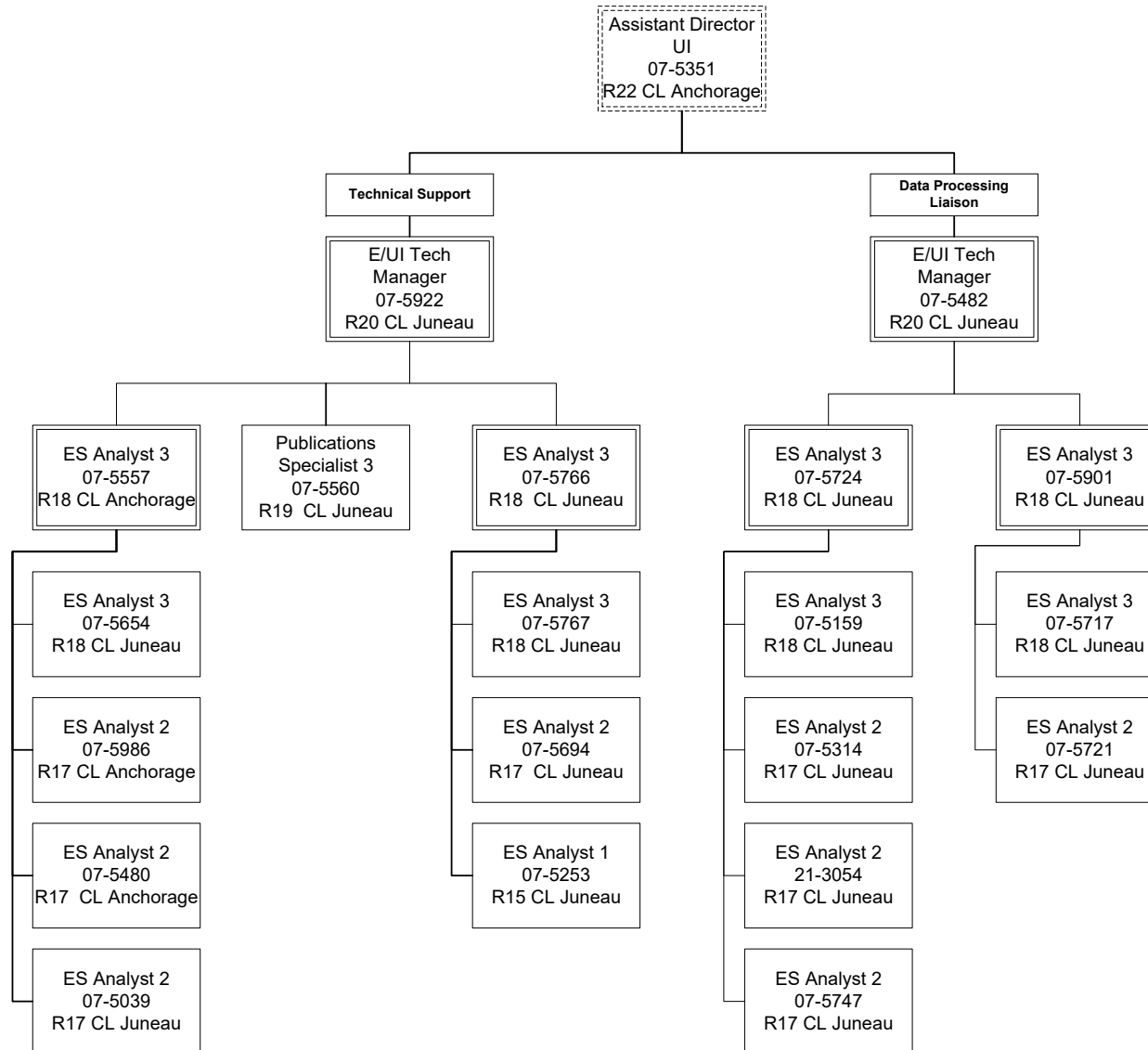
Note: If a position is split, an asterisk (*) will appear in the Split/Count column. If the split position is also counted in the component, two asterisks (**) will appear in this column. [No valid job title] appearing in the Job Class Title indicates that the PCN has an invalid class code or invalid range for the class code effective date of this scenario.

Department of Labor and Workforce Development
 Division of Employment and Training Services / Unemployment Insurance
 FY2023 Governor Organization Chart



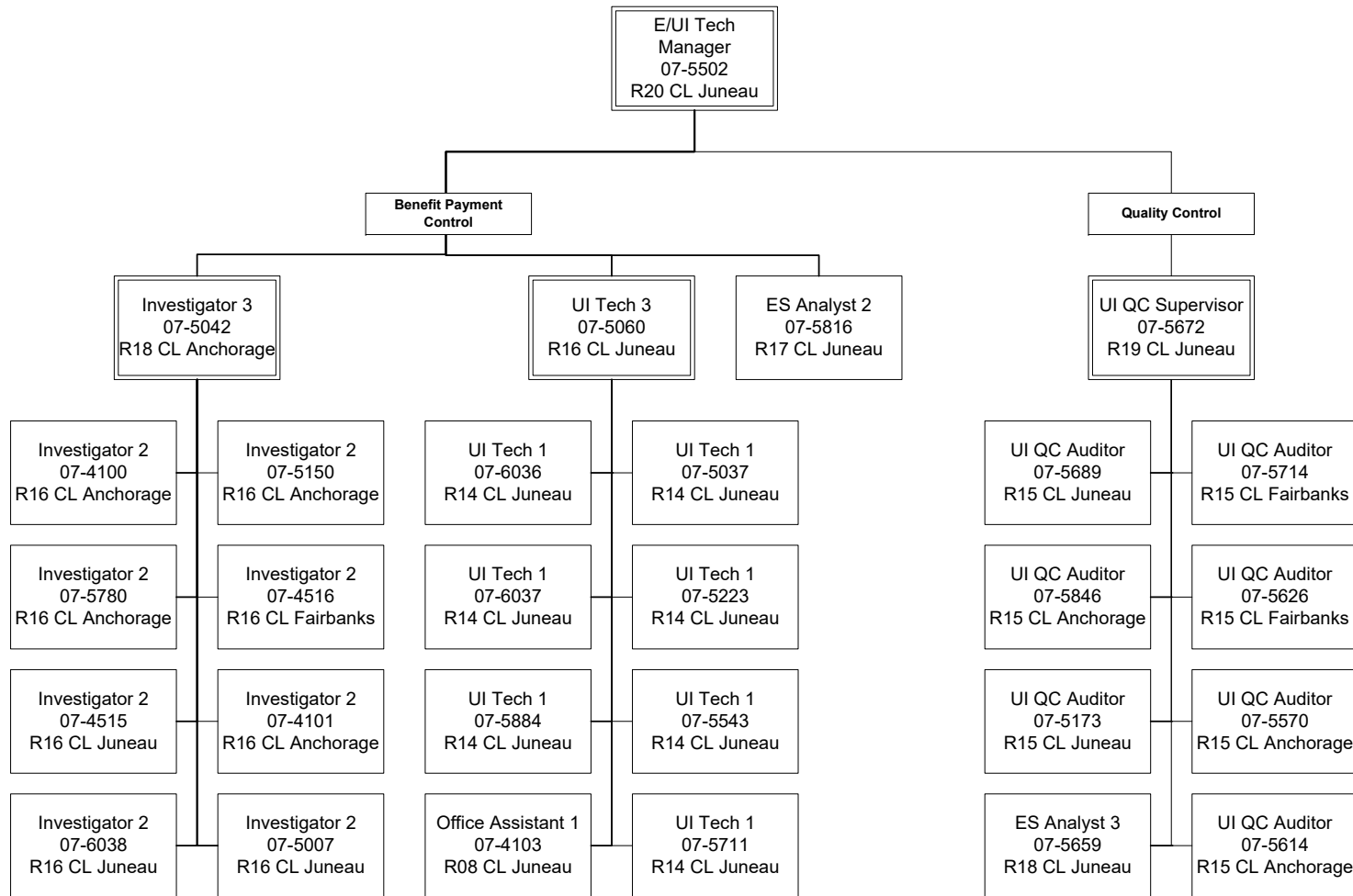
ES = Employment Security
 E/UI = Employment / Unemployment Insurance
 UI = Unemployment Insurance
 QC = Quality Control

Department of Labor and Workforce Development
 Division of Employment and Training Services / Unemployment Insurance
 FY2023 Governor Organization Chart



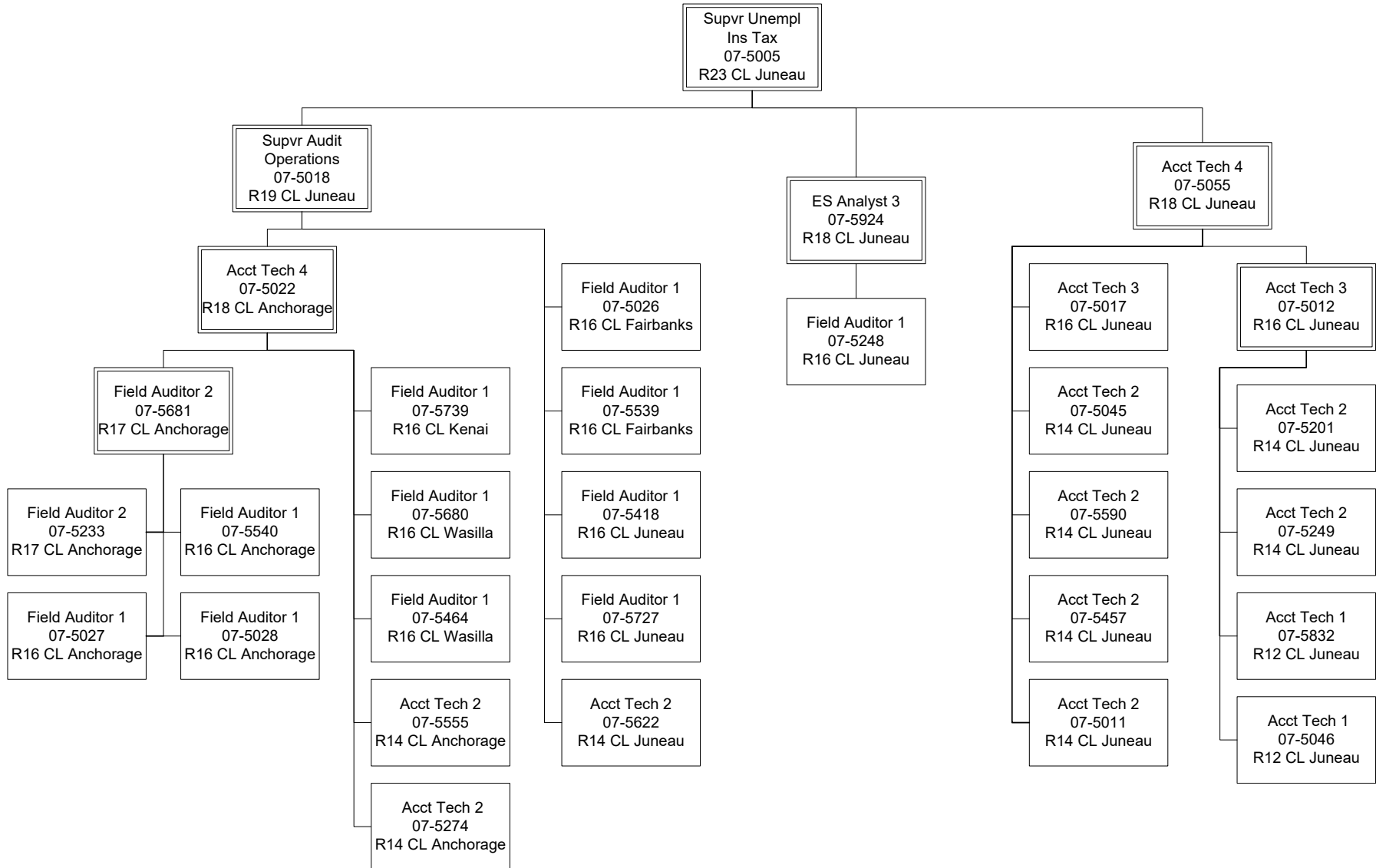
ES = Employment Security
 E/UI = Employment / Unemployment Insurance
 UI = Unemployment Insurance

Department of Labor and Workforce Development
 Division of Employment and Training Services / Unemployment Insurance
 FY2023 Governor Organization Chart



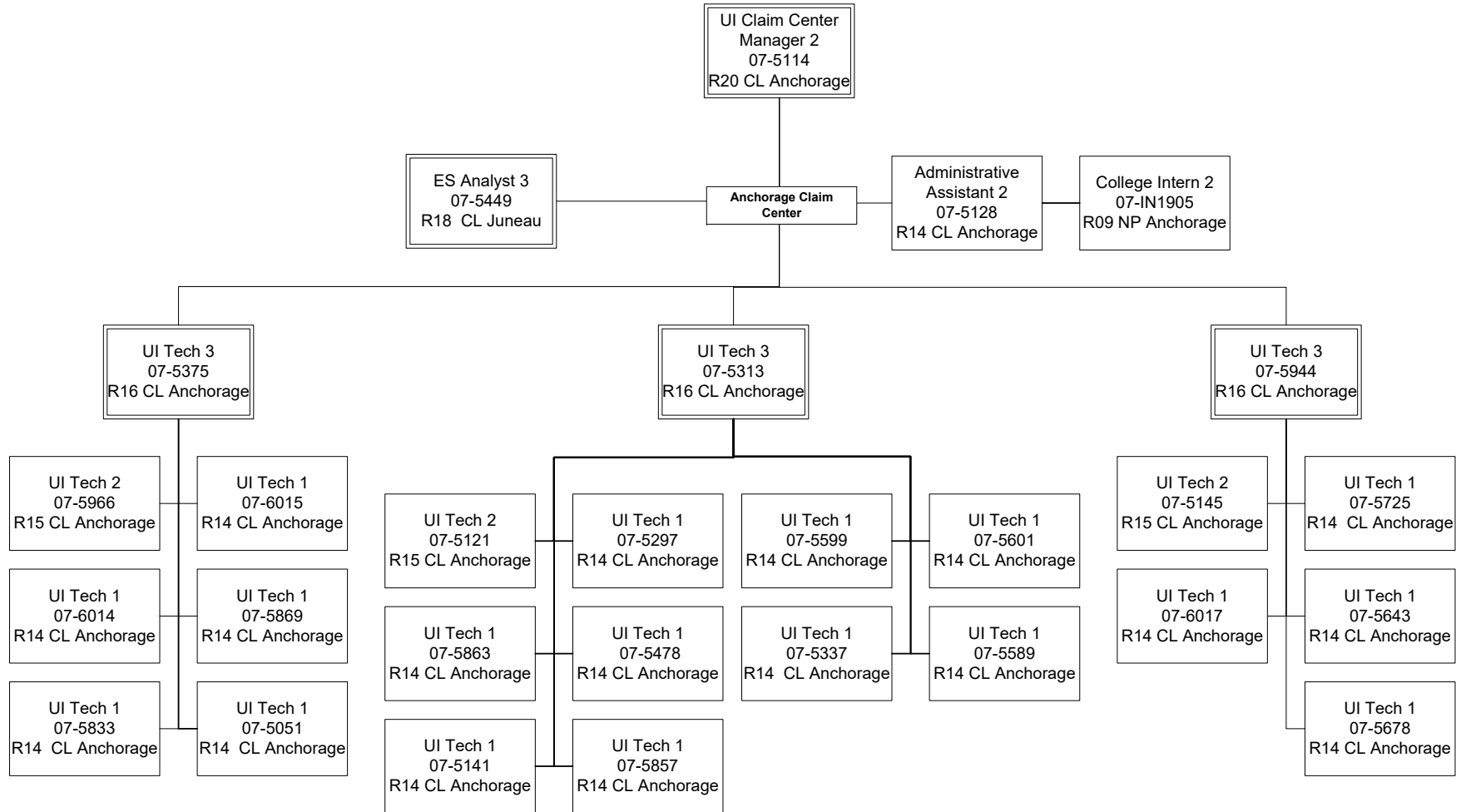
ES = Employment Security
 E/UI = Employment / Unemployment Insurance
 UI = Unemployment Insurance
 QC = Quality Control

Department of Labor and Workforce Development
 Division of Employment and Training Services / Unemployment Insurance
 FY2023 Governor Organization Chart



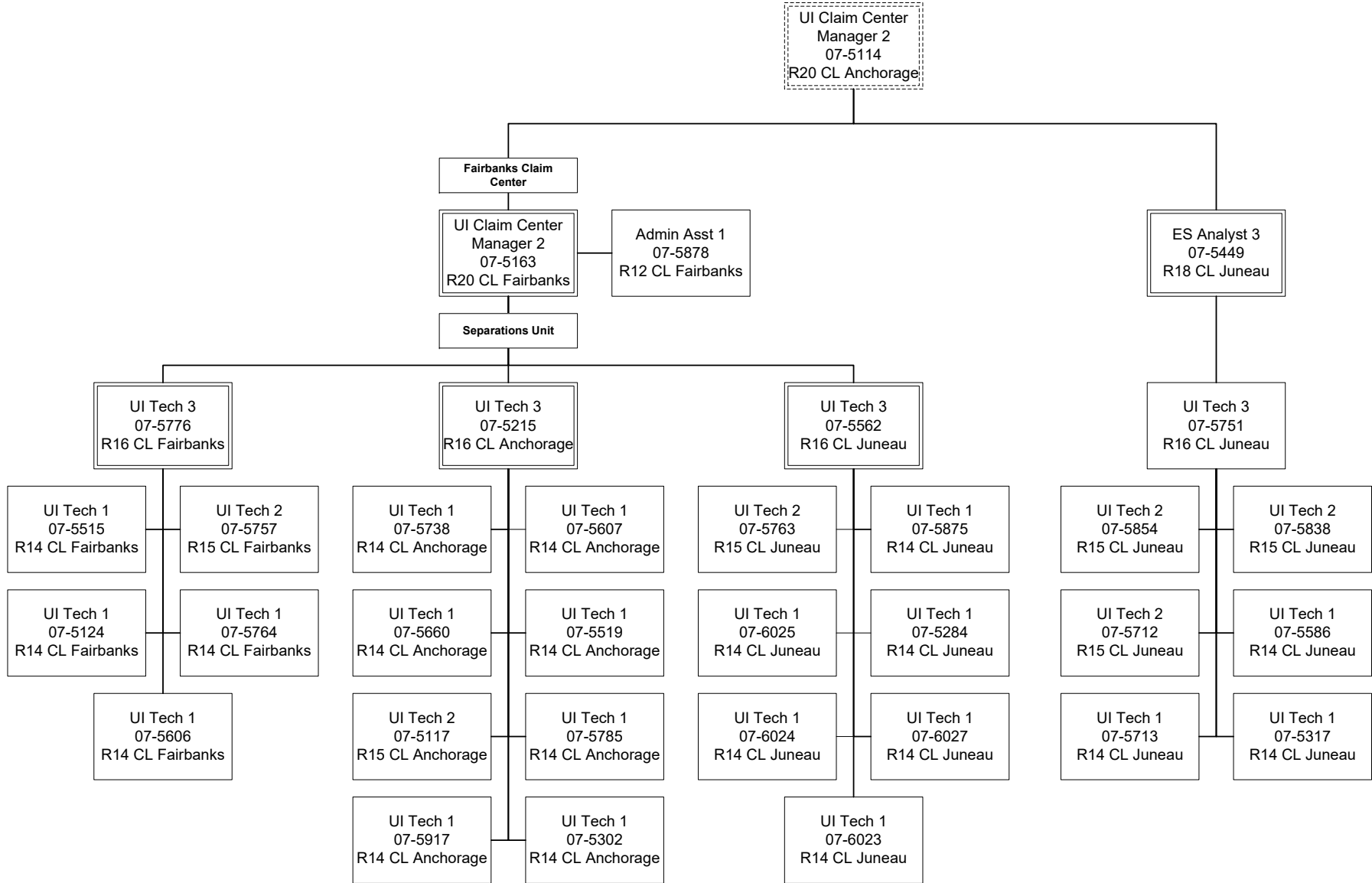
ES = Employment Security
 E/UI = Employment / Unemployment Insurance
 UI = Unemployment Insurance
 QC = Quality Control

Department of Labor and Workforce Development
 Division of Employment and Training Services / Unemployment Insurance
 FY2023 Governor Organization Chart



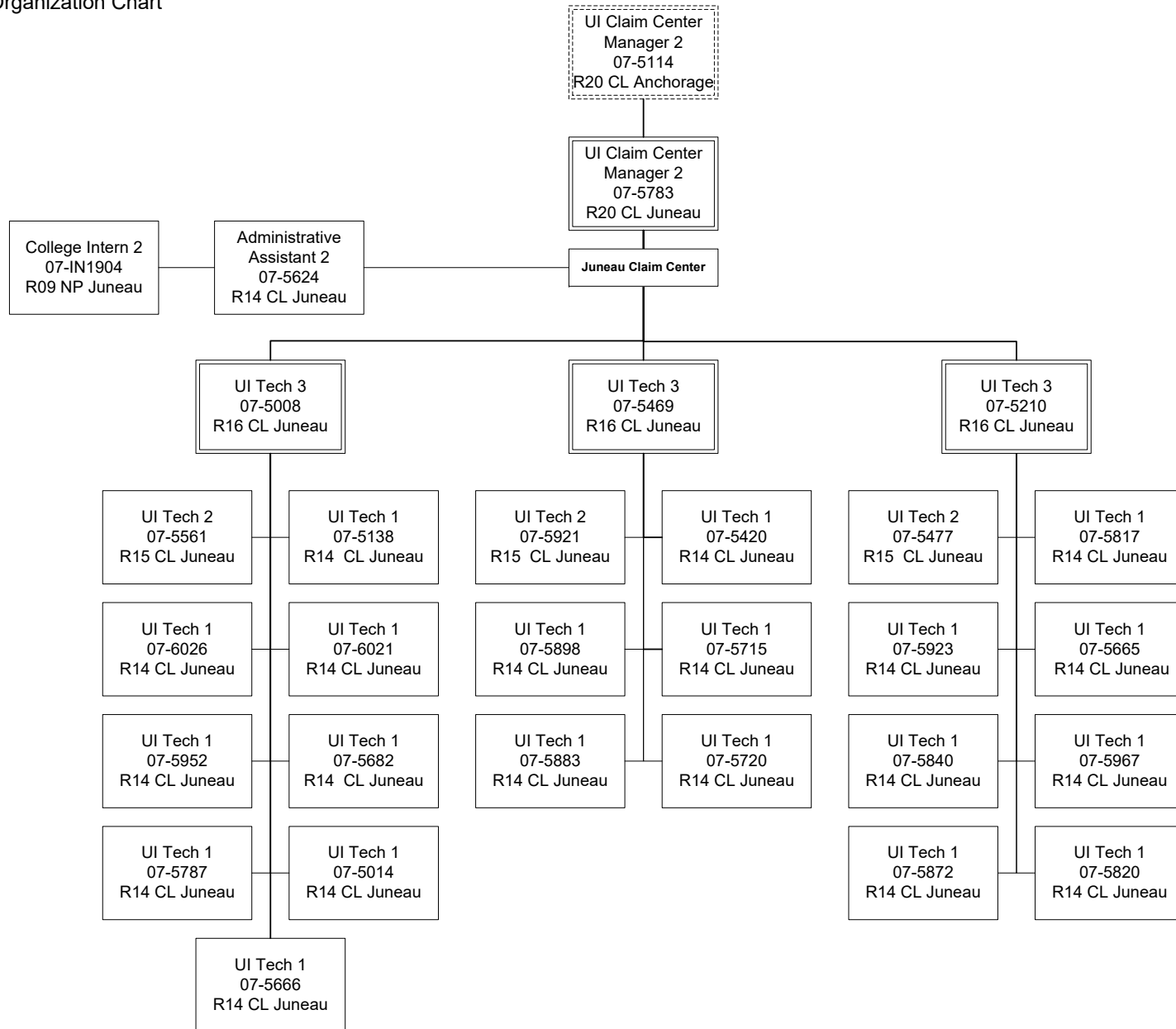
ES = Employment Security
 E/UI = Employment / Unemployment Insurance
 UI = Unemployment Insurance
 QC = Quality Control

Department of Labor and Workforce Development
 Division of Employment and Training Services / Unemployment Insurance
 FY2023 Governor Organization Chart



ES = Employment Security
 E/UI = Employment / Unemployment Insurance
 UI = Unemployment Insurance
 QC = Quality Control

Department of Labor and Workforce Development
 Division of Employment and Training Services / Unemployment Insurance
 FY2023 Governor Organization Chart



ES = Employment Security
 E/UI = Employment / Unemployment Insurance
 UI = Unemployment Insurance
 QC = Quality Control