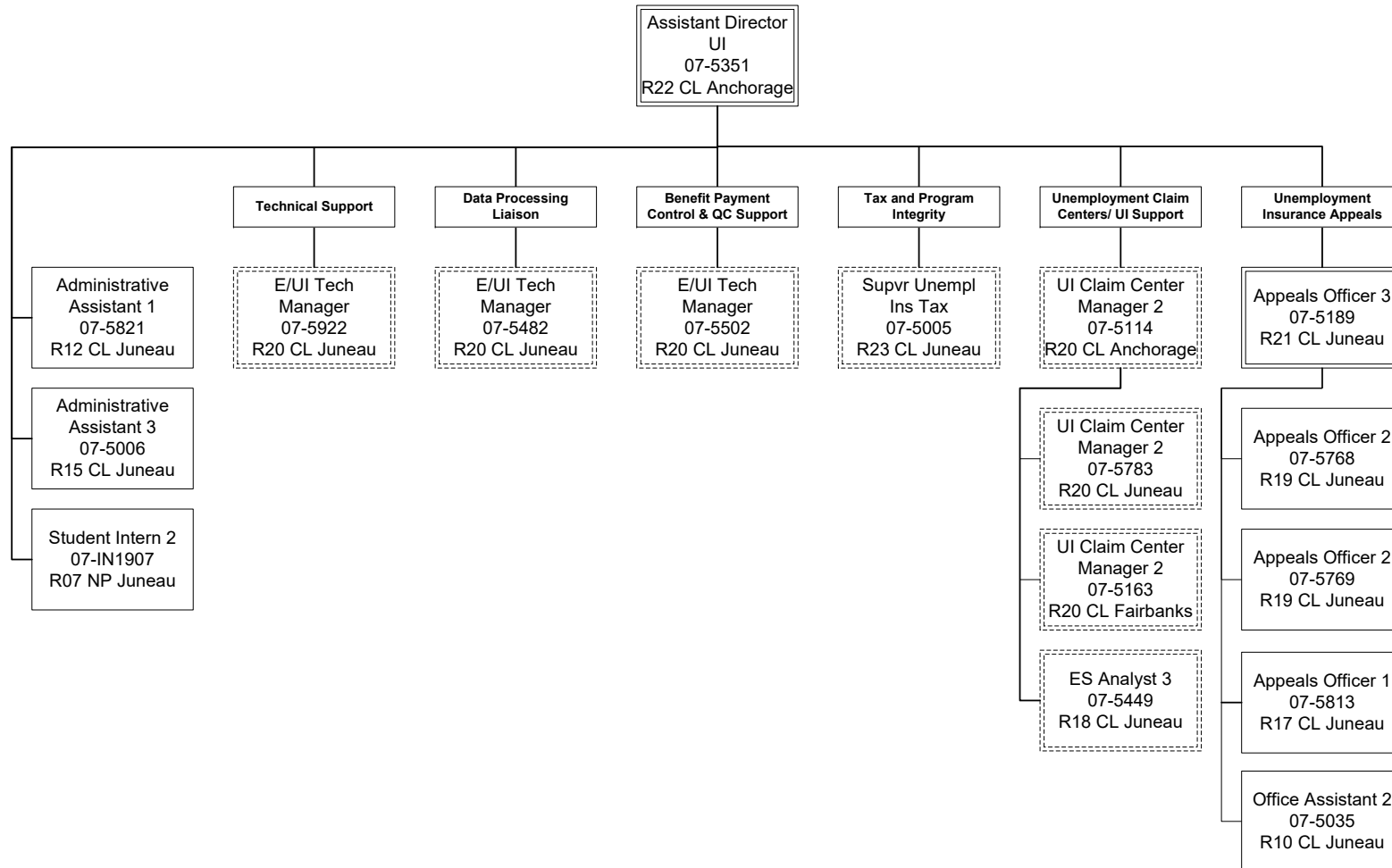
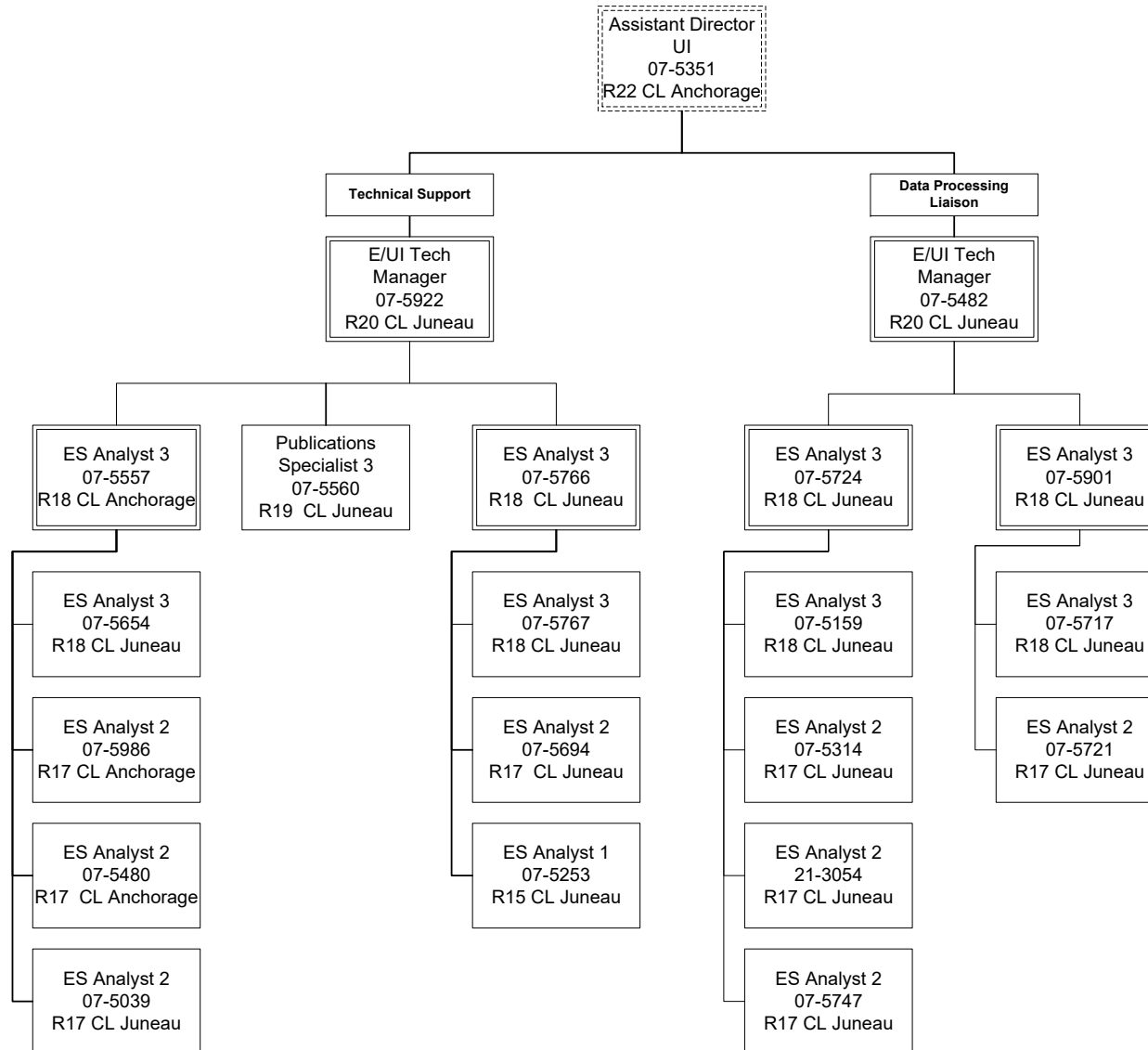


Department of Labor and Workforce Development
 Division of Employment and Training Services / Unemployment Insurance
 FY2023 Governor Organization Chart



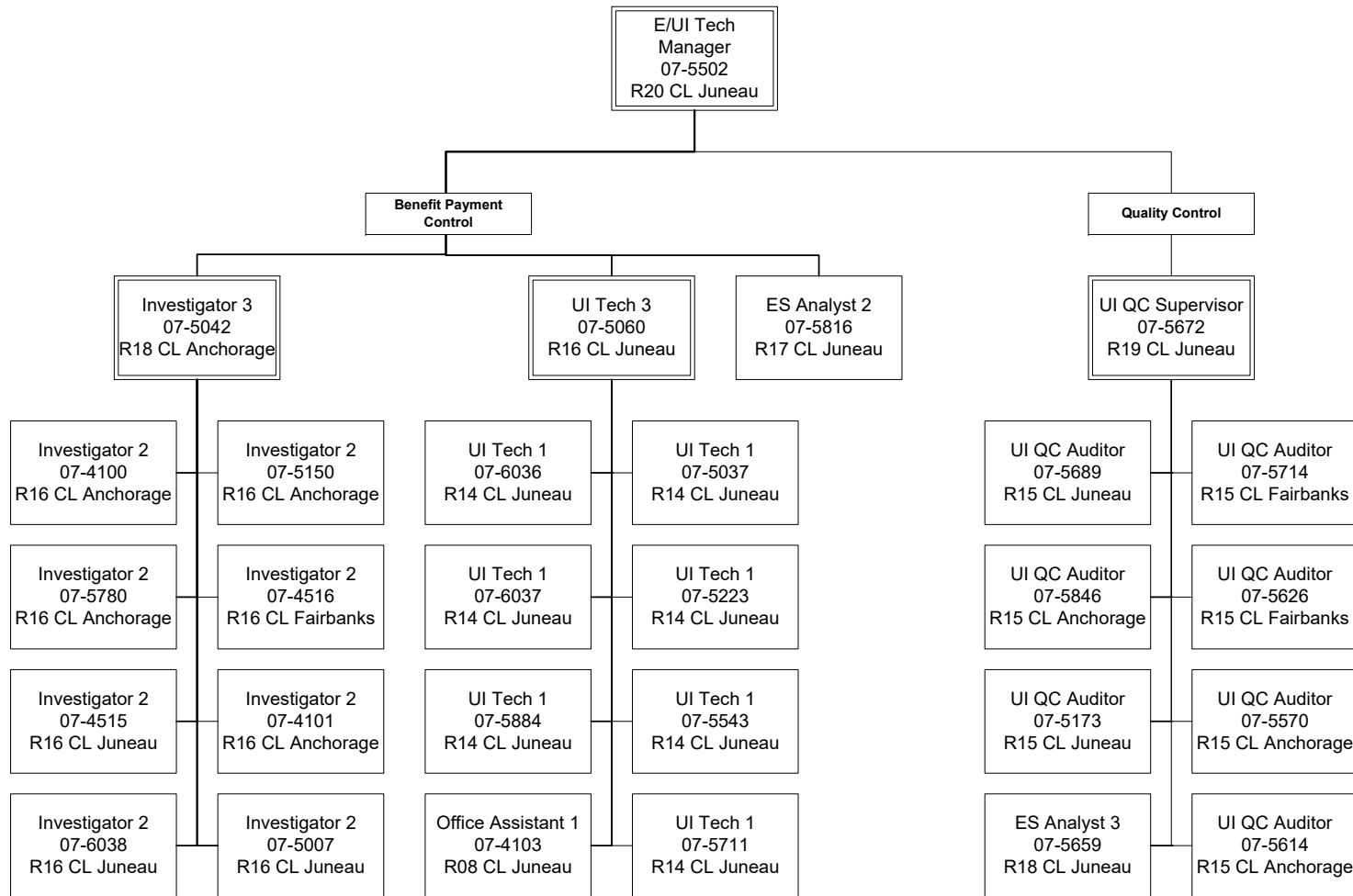
ES = Employment Security
 E/UI = Employment / Unemployment Insurance
 UI = Unemployment Insurance
 QC = Quality Control

Department of Labor and Workforce Development
 Division of Employment and Training Services / Unemployment Insurance
 FY2023 Governor Organization Chart



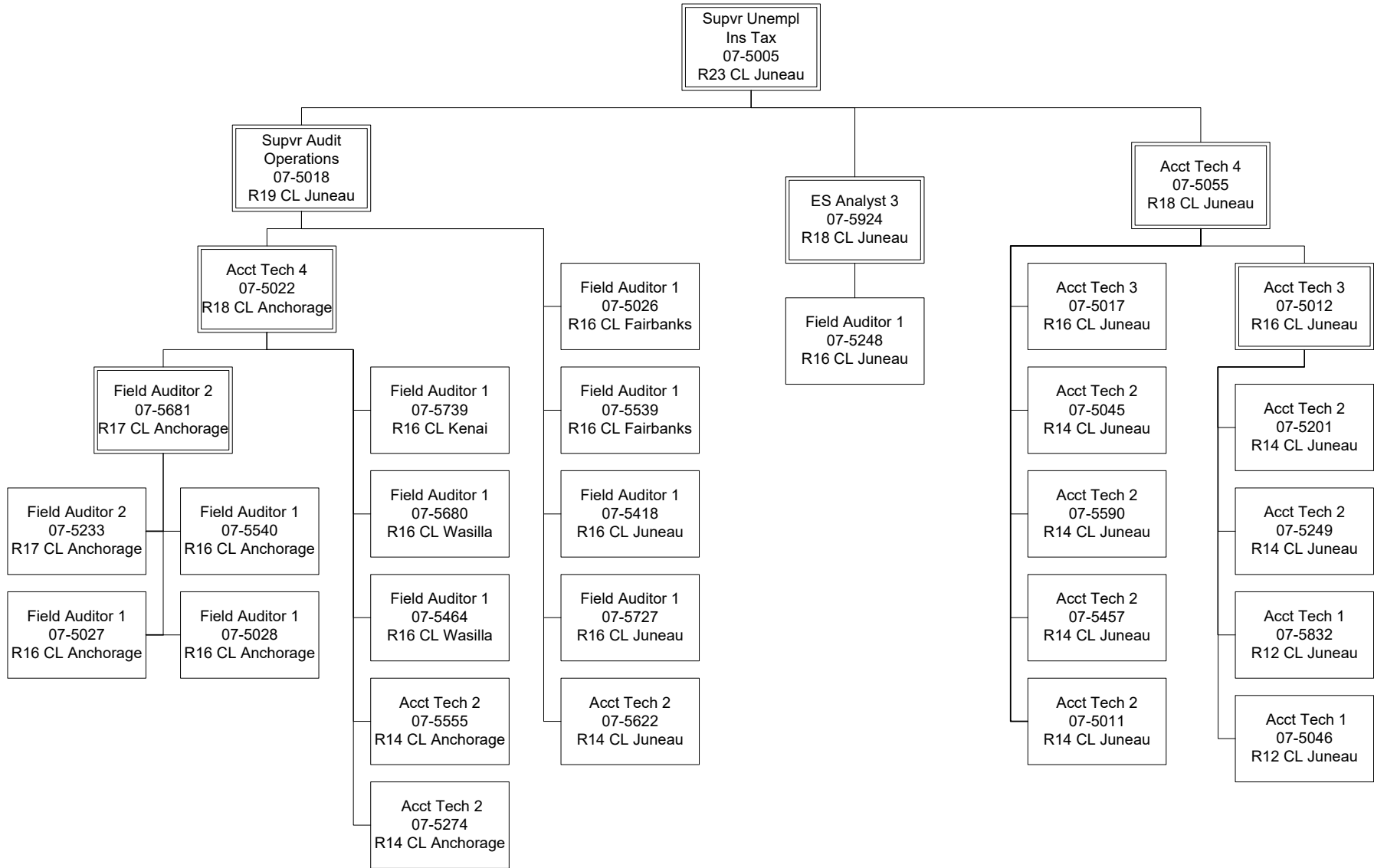
ES = Employment Security
 E/UI = Employment / Unemployment Insurance
 UI = Unemployment Insurance

Department of Labor and Workforce Development
 Division of Employment and Training Services / Unemployment Insurance
 FY2023 Governor Organization Chart



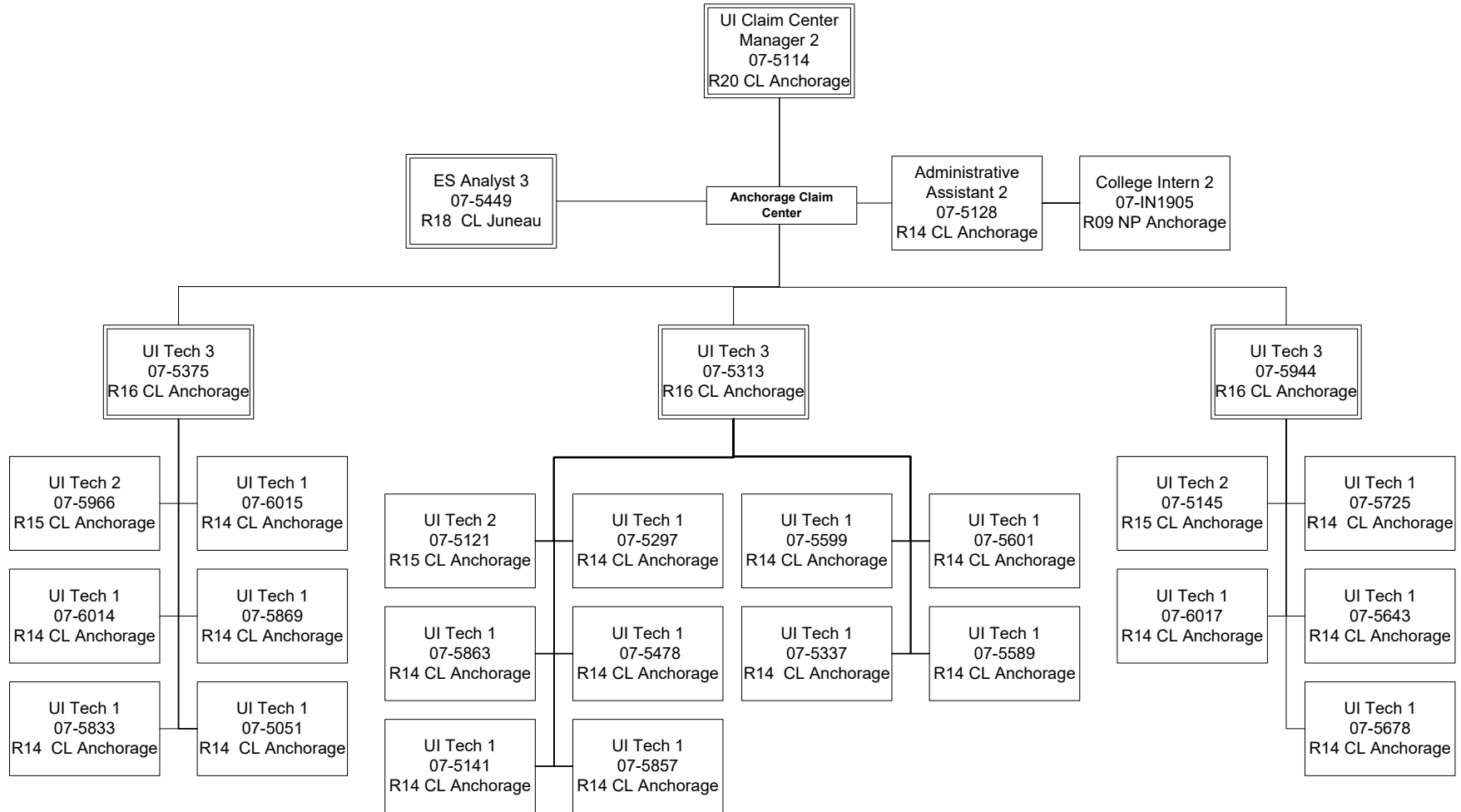
ES = Employment Security
 E/UI = Employment / Unemployment Insurance
 UI = Unemployment Insurance
 QC = Quality Control

Department of Labor and Workforce Development
 Division of Employment and Training Services / Unemployment Insurance
 FY2023 Governor Organization Chart



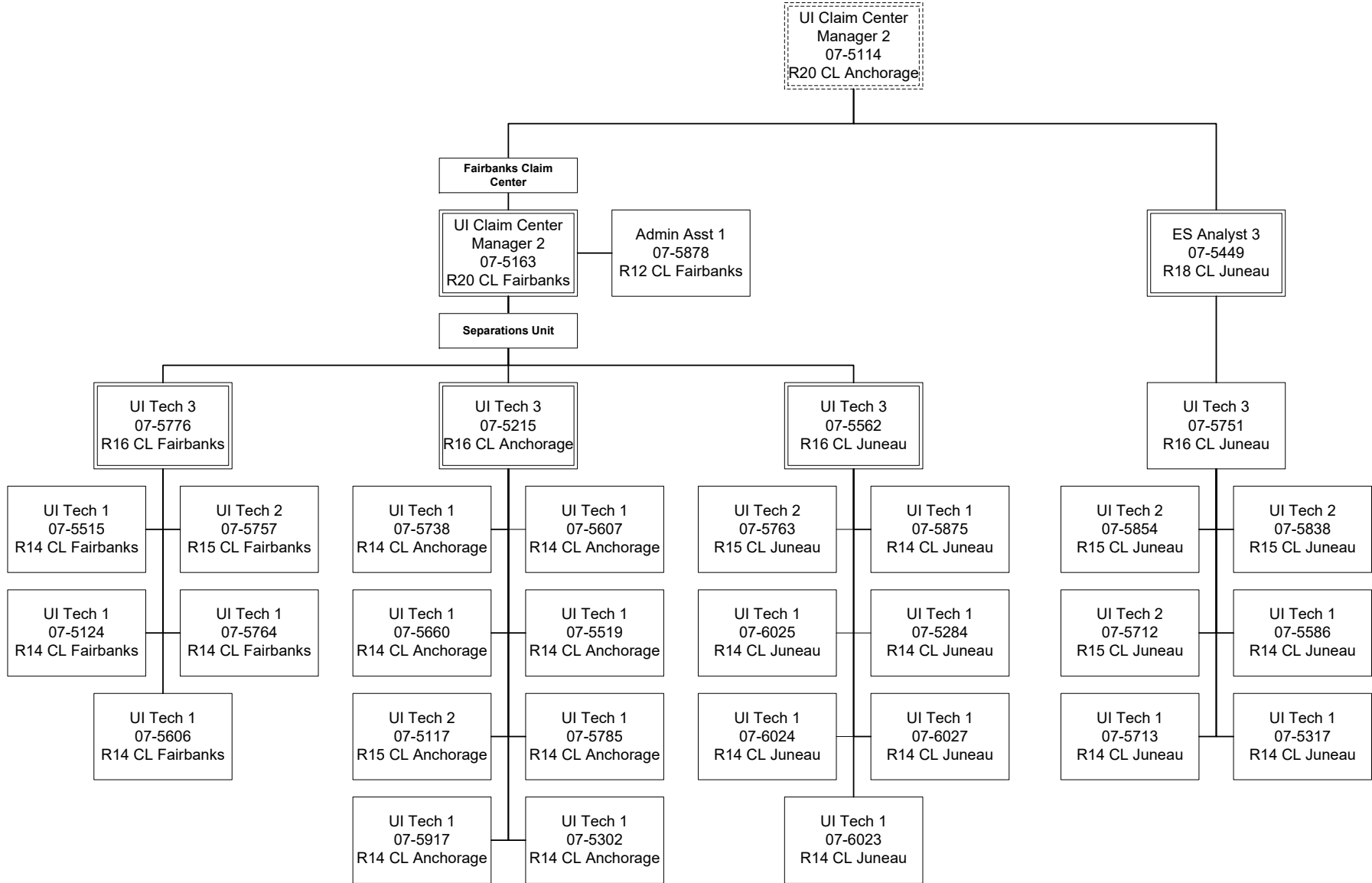
ES = Employment Security
 E/UI = Employment / Unemployment Insurance
 UI = Unemployment Insurance
 QC = Quality Control

Department of Labor and Workforce Development
 Division of Employment and Training Services / Unemployment Insurance
 FY2023 Governor Organization Chart



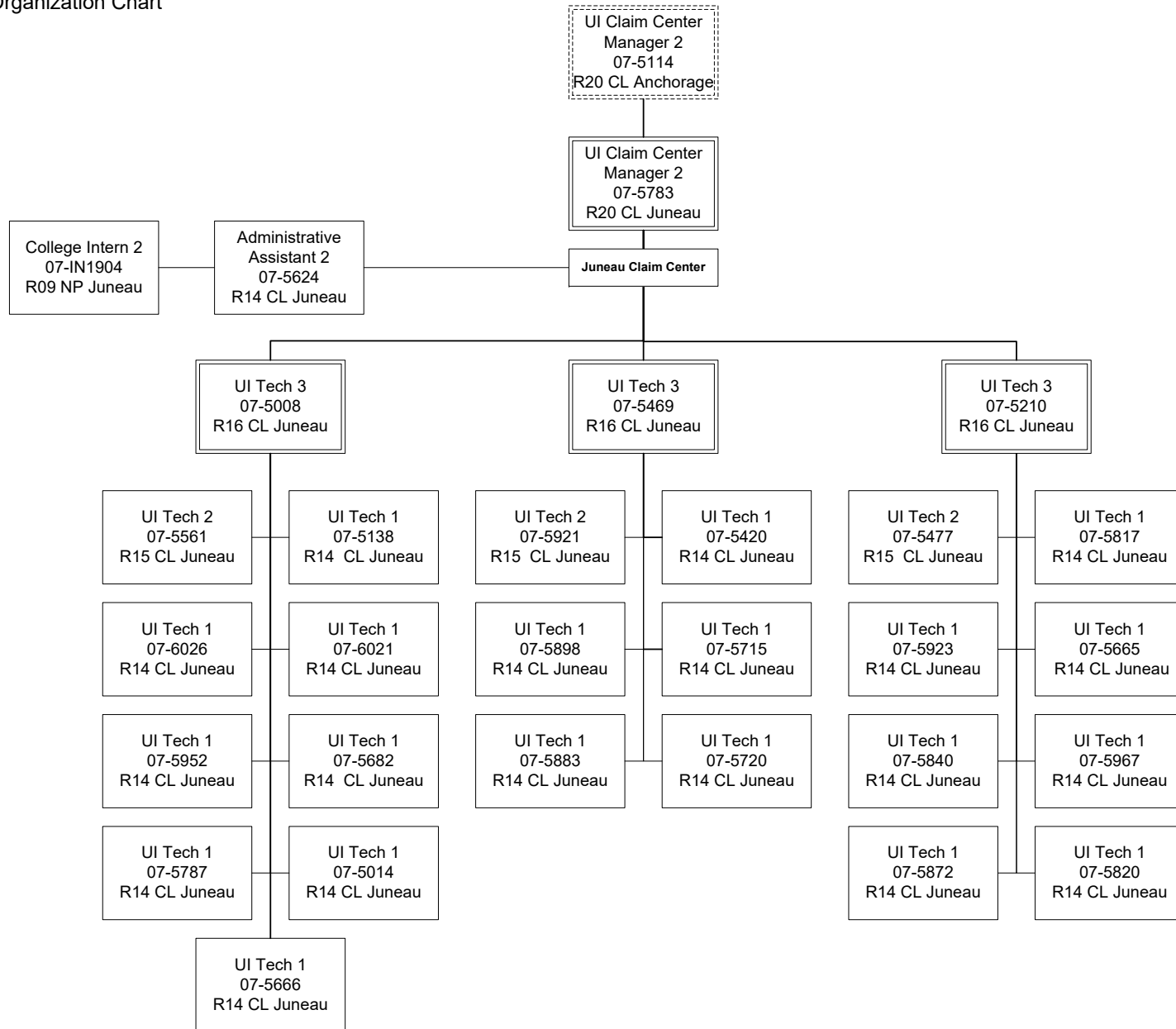
ES = Employment Security
 E/UI = Employment / Unemployment Insurance
 UI = Unemployment Insurance
 QC = Quality Control

Department of Labor and Workforce Development
 Division of Employment and Training Services / Unemployment Insurance
 FY2023 Governor Organization Chart



ES = Employment Security
 E/UI = Employment / Unemployment Insurance
 UI = Unemployment Insurance
 QC = Quality Control

Department of Labor and Workforce Development
 Division of Employment and Training Services / Unemployment Insurance
 FY2023 Governor Organization Chart



ES = Employment Security
 E/UI = Employment / Unemployment Insurance
 UI = Unemployment Insurance
 QC = Quality Control