

State of Alaska
FY2023 Governor's Operating Budget

Department of Law
Torts & Workers' Compensation
Component Budget Summary

Component: Torts & Workers' Compensation

Contribution to Department's Mission

The Torts and Workers' Compensation Section provides legal defense and advice in a wide range of tort lawsuits filed against state agencies and state employees, including personal injury, wrongful death, professional malpractice, property damage, and civil rights claims. It also provides advice and training to state agencies and represents the state as an employer before the Alaska Workers' Compensation Board (AWCB) and the Alaska Workers' Compensation Appeals Commission.

Core Services

- Attorneys in the Torts and Workers' Compensation section defend tort claims and civil rights claims for damages under 42 USC §1983 filed in state and federal trial and appellate courts.
- Attorneys in the section represent state agencies in workers' compensation claims filed by state employees where the State of Alaska is the employer. They advocate on behalf of the state at hearings before the AWCB and represent the state as the employer in appeals from board decisions taken to the Alaska Workers' Compensation Appeals Commission and to the Alaska Supreme Court.
- Attorneys in the section advise the Department of Corrections on legal matters and represent it in inmate post-conviction relief petitions and administrative disciplinary appeals in state court and inmate civil rights claims under 42 USC §1983 filed in state and federal trial and appellate courts.
- Attorneys in the section provide advice and training to state agencies on risk management, workers' compensation, and liability issues and provide advice to state adjusters on workers' compensation issues.

Major Component Accomplishments in 2021

On behalf of the self-insured Division of Risk Management in the Department of Administration, the section pursues aggressive motion practice, trial, or negotiation to contain the ultimate costs of tort cases filed against the State of Alaska and its employees and in workers' compensation matters involving state employees. The section represented the state and/or its employees in 107 tort cases and 192 workers' compensation cases. The section also pursues aggressive motion practice, trial or negotiation to contain costs associated with civil and administrative litigation filed by inmates against the Department of Corrections and its employees. The section represented DOC and/or its employees in 256 civil and administrative matters.

- Investigated and referred a workers' compensation case to the AWCB's fraud investigation unit, leading to a jury conviction of a former employee for defrauding the state out of more than \$250,000 in workers' compensation benefits and a two-year jail sentence. The fraud petition filed by the section with the AWCB is stayed pending appeal of the criminal felony fraud conviction and sentence.
- Defended the state as an employer in numerous hearings before the AWCB and in appeals before the Alaska Workers' Compensation Appeals Commission and the Alaska Supreme Court.
- Won an appeal in the Alaska Supreme Court reversing the trial court's order directing the release of DOC investigatory records because the records are shielded from disclosure by the invasion of privacy exemption to the Alaska Public Records Act.
- After years of briefing and remand from the Alaska Supreme Court, won dismissal of the third party allocation of fault claim against the state for alleged sexual assault of a minor. This case is on appeal for the third time to the Alaska Supreme Court.
- Won an appeal in the Ninth Circuit Court of Appeals affirming dismissal of a wrongful death lawsuit filed against the state on the grounds the Alaska State Troopers' conduct was entitled to qualified immunity.
- Won an appeal in the Alaska Supreme Court affirming summary judgment and dismissal of an inmate's medical malpractice lawsuit against the state and its mental health providers.

- Won an appeal to the Alaska Supreme Court affirming dismissal of an inmate's civil rights lawsuit against the state on the grounds the state appropriately restricted the inmate's visitation rights due to prison security concerns.
- Won summary judgment and dismissal of a wrongful death lawsuit against the state based upon the licensing and monitoring of an assisted living center.
- Won summary judgment and dismissal of several medical malpractice cases.
- The section briefed significant issues about the scope of discovery of confidential child protection, mental health, medical, and other records of third parties not directly involved in litigation, and protection of privacy interests.
- Prevailed on dispositive motions to dismiss or for summary judgment in a number of other cases, and obtained attorney fee awards as prevailing party. In addition, motions filed by the section assisted in settlement negotiations and in resolving cases on favorable terms. The section also succeeded in obtaining voluntary dismissal of numerous tort and DOC civil lawsuits, where the state paid nothing and each side assumed its own expenses.
- Provided training on civil law and liability to multiple training academies for correctional and probation officers. The section also provided training for the state's independent workers' compensation adjusters.

Key Component Challenges

One key component challenge stems from the Alaska standard for summary judgment. Summary judgment is a useful tool for concluding civil litigation short of trial. However, Alaska law precludes the grant of summary judgment if there are any material issues in dispute. The court may not evaluate the overwhelming weight of the evidence in support of the motion, nor may it make credibility judgments even when the plaintiff's assertions as to material facts are unsubstantiated. The result is that where the court denies summary judgment, the section must consider the substantial cost of taking the case to trial in determining whether a settlement might be a more economical use of state resources.

Another continuing key challenge involves defending lawsuits brought by unrepresented plaintiffs. Because these cases take more time, a disproportionate amount of the section's resources is channeled to defending these lawsuits.

The section continues to deal with a high volume of matters referred for legal assistance from the Third-Party Administrator for the workers' compensation program of the Division of Risk Management. Keeping up with the workers' compensation caseload will likely remain a challenge.

Significant Changes in Results to be Delivered in FY2023

No significant changes are anticipated in the next fiscal year.

Statutory and Regulatory Authority

AS 44.23.020

Contact Information
Contact: Patti Shake, Chief Assistant Attorney General Phone: (907) 269-5100 E-mail: patti.shake@alaska.gov

Torts & Workers' Compensation Personal Services Information				
Authorized Positions			Personal Services Costs	
	<u>FY2022</u> <u>Management</u> <u>Plan</u>	<u>FY2023</u> <u>Governor</u>		
Full-time	33	32	Annual Salaries	2,681,038
Part-time	0	0	COLA	2,066
Nonpermanent	0	0	Premium Pay	0
			Annual Benefits	1,622,987
			<i>Less 0.70% Vacancy Factor</i>	(30,291)
			Lump Sum Premium Pay	0
Totals	33	32	Total Personal Services	4,275,800

Position Classification Summary					
Job Class Title	Anchorage	Fairbanks	Juneau	Others	Total
Associate Attorney 1	1	0	1	0	2
Associate Attorney 2	1	0	0	0	1
Attorney 2	2	0	0	0	2
Attorney 3	2	0	0	0	2
Attorney 4	6	0	1	0	7
Attorney 5	4	1	0	0	5
Attorney 6	1	0	0	0	1
Law Office Assistant 1	3	1	0	0	4
Law Office Assistant 2	2	0	1	0	3
Paralegal 1	1	0	0	0	1
Paralegal 2	3	1	0	0	4
Totals	26	3	3	0	32

Component Detail All Funds
Department of Law

Component: Torts & Workers' Compensation (2719)
RDU: Civil Division (Excludes Janus) (35)

Non-Formula Component

	FY2021 Actuals	FY2022 Conference Committee	FY2022 Authorized	FY2022 Management Plan	FY2023 Governor	FY2022 Management Plan vs FY2023 Governor	
71000 Personal Services	3,123.4	4,449.1	4,449.1	4,375.2	4,275.8	-99.4	-2.3%
72000 Travel	7.2	17.2	17.2	17.2	17.2	0.0	0.0%
73000 Services	621.4	93.7	93.7	93.7	93.7	0.0	0.0%
74000 Commodities	36.1	33.6	33.6	33.6	33.6	0.0	0.0%
75000 Capital Outlay	12.5	0.0	0.0	0.0	0.0	0.0	0.0%
77000 Grants, Benefits	0.0	0.0	0.0	0.0	0.0	0.0	0.0%
78000 Miscellaneous	0.0	0.0	0.0	0.0	0.0	0.0	0.0%
Totals	3,800.6	4,593.6	4,593.6	4,519.7	4,420.3	-99.4	-2.2%
Fund Sources:							
1004 Gen Fund (UGF)	10.6	219.6	219.6	219.6	75.4	-144.2	-65.7%
1007 I/A Rcpts (Other)	3,790.0	4,374.0	4,374.0	4,300.1	4,344.9	44.8	1.0%
Unrestricted General (UGF)	10.6	219.6	219.6	219.6	75.4	-144.2	-65.7%
Designated General (DGF)	0.0	0.0	0.0	0.0	0.0	0.0	0.0%
Other Funds	3,790.0	4,374.0	4,374.0	4,300.1	4,344.9	44.8	1.0%
Federal Funds	0.0	0.0	0.0	0.0	0.0	0.0	0.0%
Positions:							
Permanent Full Time	33	34	34	33	32	-1	-3.0%
Permanent Part Time	0	0	0	0	0	0	0.0%
Non Permanent	0	0	0	0	0	0	0.0%

Change Record Detail - Multiple Scenarios with Descriptions
Department of Law

Component: Torts & Workers' Compensation (2719)
RDU: Civil Division (Excludes Janus) (35)

Scenario/Change Record Title	Trans Type	Totals	Personal Services	Travel	Services	Commodities	Capital Outlay	Grants, Benefits	Miscellaneous	Positions		NP
										PFT	PPT	
***** Changes From FY2022 Conference Committee To FY2022 Authorized *****												
FY2022 Conference Committee	ConfCom	4,593.6	4,449.1	17.2	93.7	33.6	0.0	0.0	0.0	34	0	0
1004 Gen Fund		219.6										
1007 I/A Rcpts		4,374.0										
Subtotal		4,593.6	4,449.1	17.2	93.7	33.6	0.0	0.0	0.0	34	0	0
***** Changes From FY2022 Authorized To FY2022 Management Plan *****												
Transfer Law Office Assistant 1 (03-0171) from Transportation to Address Workload Demands	Trin	0.0	0.0	0.0	0.0	0.0	0.0	0.0	0.0	1	0	0
Transfer a full-time Law Office Assistant 1 (03-0171), range 11, located in Fairbanks, from the Transportation component to the Torts and Workers' Compensation component to accommodate workload demands. The remaining staff in Transportation are sufficient to cover the anticipated workload.												
Transfer Two Support Positions to Information and Project Support to Address Workload Demands	Trout	-73.9	-73.9	0.0	0.0	0.0	0.0	0.0	0.0	-2	0	0
1007 I/A Rcpts		-73.9										
Transfer a full-time Associate Attorney 2 (03-0143), range 19, and a full-time Law Office Assistant 1 (03-0347), range 11, both located in Anchorage, to the Information and Project Support component from the Torts and Workers' Compensation component to accommodate workload demands. The remaining staff in Torts and Workers' Compensation are sufficient to cover the anticipated workload.												
Transfer Associate Attorney 2 (03-0321) from Information and Project Support to Address Workload Demands	Trin	0.0	0.0	0.0	0.0	0.0	0.0	0.0	0.0	1	0	0
Transfer a full-time Associate Attorney 2 (03-0321), range 19, located in Anchorage, from the Information and Project Support component to the Torts and Workers' Compensation component to accommodate workload demands. The remaining staff in Information and Project Support are sufficient to cover the anticipated workload.												
Transfer Paralegal 1 (03-0397) to Labor and State Affairs to Address Workload Demands	Trout	0.0	0.0	0.0	0.0	0.0	0.0	0.0	0.0	-1	0	0
Transfer a full-time Paralegal 1 (03-0397), range 14, located in Juneau, from the Torts and Workers' Compensation component to the Labor and State Affairs component accommodate workload demands. The remaining staff in Torts and Workers' Compensation are sufficient to cover the anticipated workload.												
Subtotal		4,519.7	4,375.2	17.2	93.7	33.6	0.0	0.0	0.0	33	0	0
***** Changes From FY2022 Management Plan To FY2023 Governor *****												
FY2023 Salary and Benefit Adjustments	SalAdj	2.1	2.1	0.0	0.0	0.0	0.0	0.0	0.0	0	0	0

Change Record Detail - Multiple Scenarios with Descriptions
Department of Law

Component: Torts & Workers' Compensation (2719)
RDU: Civil Division (Excludes Janus) (35)

Scenario/Change Record Title	Trans Type	Totals	Personal Services	Travel	Services	Commodities	Capital Outlay	Grants, Benefits	Miscellaneous	Positions		NP
										PFT	PPT	
1004 Gen Fund		0.1										
1007 I/A Rcpts		2.0										
FY2023 SU BU - Supervisory Employees (SS) 1% COLA: \$2.1												
FY2023 Executive Health Insurance, SBS, and Risk Management Rate Changes												
	SalAdj	37.0	37.0	0.0	0.0	0.0	0.0	0.0	0.0	0	0	0
1007 I/A Rcpts		37.0										
FY2023 Change Partially Exempt & Exempt Executive (EE) - Health Insurance from \$1,555 to \$1,685; SBS and Risk Management Rates: \$37.0												
FY2023 Supervisory Employees Health Insurance, SBS, and Risk Management Rate Changes												
	SalAdj	5.0	5.0	0.0	0.0	0.0	0.0	0.0	0.0	0	0	0
1004 Gen Fund		0.3										
1007 I/A Rcpts		4.7										
FY2023 Change Supervisory Employees (SS) - Health Insurance from \$1,555 to \$1,685; SBS and Risk Management Rates: \$5.0												
FY2023 General Government Unit SBS and Risk Management Rate Changes												
	SalAdj	1.2	1.2	0.0	0.0	0.0	0.0	0.0	0.0	0	0	0
1004 Gen Fund		0.1										
1007 I/A Rcpts		1.1										
FY2023 Change General Government Unit (GG, GP, GY, GZ) - SBS, and Risk Management Rates: \$1.2												
FY2023 PERS Actuarial Rate Adjustment to 24.79% Ch9 SLA2021 (SB55)												
	SalAdj	-144.7	-144.7	0.0	0.0	0.0	0.0	0.0	0.0	0	0	0
1004 Gen Fund		-2.4										
1007 I/A Rcpts		-142.3										
Includes: FY2023 Adjustment for PERS ARM Board Approved Rate of 24.79% (from 30.11%): \$-144.7												
Transfer Attorney 4 (03-0142) from Commercial and Fair Business for Required Legal Expertise												
	Trin	0.0	0.0	0.0	0.0	0.0	0.0	0.0	0.0	1	0	0
Transfer one full-time Attorney 4 position (03-0142), range 24, located in Anchorage, to the Torts and Workers' Compensation component from the Commercial and Fair Business component to keep pace with the required level of legal expertise needed within the office. The remaining staff in Commercial and Fair Business are sufficient to accommodate anticipated workload.												
Transfer Attorney 5 (03-0315) to Commercial and Fair Business for Required Legal Expertise												
	Trout	0.0	0.0	0.0	0.0	0.0	0.0	0.0	0.0	-1	0	0

Change Record Detail - Multiple Scenarios with Descriptions
Department of Law

Component: Torts & Workers' Compensation (2719)
RDU: Civil Division (Excludes Janus) (35)

Scenario/Change Record Title	Trans Type	Totals	Personal Services	Travel	Services	Commodities	Capital Outlay	Grants, Benefits	Miscellaneous	Positions		NP
										PFT	PPT	
Transfer one full-time Attorney 5 position (03-0315), range 25, located in Anchorage, to the Commercial and Fair Business component from the Torts and Workers' Compensation component to keep pace with the required level of legal expertise needed within the office. The remaining staff in Torts and Workers' Compensation are sufficient to accommodate anticipated workload.												
Transfer Law Office Assistant (03-0204) to Transportation to Address Workload Demands												
	Trout	0.0	0.0	0.0	0.0	0.0	0.0	0.0	0.0	-1	0	0
Transfer a full-time Law Office Assistant 1 (03-0204), range 11, located in Anchorage, to the Transportation component from the Torts and Workers' Compensation component to accommodate workload demands. The remaining staff in Torts and Workers' Compensation are sufficient to cover the anticipated workload.												
Realign PERS Rate Adjustment by Fund Source Ch9 SLA2021 (SB55)												
	FndChg	0.0	0.0	0.0	0.0	0.0	0.0	0.0	0.0	0	0	0
1004 Gen Fund		-142.3										
1007 I/A Rcpts		142.3										
Remove one-time UGF subsidy for rate agency assigned in SB55 fiscal note (Ch 9 SLA 2021).												
Totals		4,420.3	4,275.8	17.2	93.7	33.6	0.0	0.0	0.0	32	0	0

Line Item Detail (1676)
Department of Law
Travel

Component: Torts & Workers' Compensation (2719)

Line Number	Line Name		FY2021 Actuals	FY2022 Management Plan	FY2023 Governor
2000	Travel		7.2	17.2	17.2
Object Class	Servicing Agency	Explanation	FY2021 Actuals	FY2022 Management Plan	FY2023 Governor
2000 Travel Detail Totals			7.2	17.2	17.2
2000	In-State Employee Travel	Travel for attorneys to interview witnesses and attend court proceedings, as well as for necessary training for both attorneys and paraprofessionals. Includes travel for management purposes.	0.2	13.5	13.5
2001	In-State Non-Employee Travel	Travel costs for witnesses to testify in court.	0.0	1.0	1.0
2002	Out of State Employee Travel	Travel costs and expenses for out-of-state travel for conferences, training, etc.	0.0	1.7	1.7
2006	Other Travel Costs	Travel cost transfers.	7.0	1.0	1.0

Line Item Detail (1676)
Department of Law
Services

Component: Torts & Workers' Compensation (2719)

Line Number	Line Name		FY2021 Actuals	FY2022 Management Plan	FY2023 Governor
3000	Services		621.4	93.7	93.7
Object Class	Servicing Agency	Explanation	FY2021 Actuals	FY2022 Management Plan	FY2023 Governor
3000 Services Detail Totals			621.4	93.7	93.7
3000	Education Services	Conferences, training and memberships.	10.6	10.6	10.6
3002	Legal and Judicial Services	Depositions, research costs, expert witness and consultant fees.	105.3	25.0	25.0
3006	Delivery Services	Freight, courier, postage, and transportation of trial exhibit materials.	0.9	0.9	0.9
3011	Other Services	Cost transfers and miscellaneous items within the services line (commissions, etc.).	504.6	57.2	57.2

Line Item Detail (1676)

**Department of Law
Commodities**

Component: Torts & Workers' Compensation (2719)

Line Number	Line Name		FY2021 Actuals	FY2022 Management Plan	FY2023 Governor
4000	Commodities		36.1	33.6	33.6
Object Class	Servicing Agency	Explanation	FY2021 Actuals	FY2022 Management Plan	FY2023 Governor
4000 Commodities Detail Totals			36.1	33.6	33.6
4000	Business	Reference materials and subscriptions, including statutes, software applications, non-capital desktop refresh, and miscellaneous office supplies.	0.0	1.0	1.0
4022	Commodity Transfer	Commodity cost transfers.	36.1	32.6	32.6

Line Item Detail (1676)

**Department of Law
Capital Outlay**

Component: Torts & Workers' Compensation (2719)

Line Number	Line Name		FY2021 Actuals	FY2022 Management Plan	FY2023 Governor
5000	Capital Outlay		12.5	0.0	0.0
Object Class	Servicing Agency	Explanation	FY2021 Actuals	FY2022 Management Plan	FY2023 Governor
5000 Capital Outlay Detail Totals			12.5	0.0	0.0
5009	Capital Outlay Transfer	Capital cost transfers.	12.5	0.0	0.0

Revenue Detail (1681)
Department of Law

Component: Torts & Workers' Compensation (2719)

Revenue Type (OMB Fund Code) Revenue Source	Component	Comment	FY2021 Actuals	FY2022 Management Plan	FY2023 Governor
5007 I/A Rcpts (1007 I/A Rcpts)			3,790.0	4,300.1	4,344.9
5301 Inter-Agency Receipts	Admin - Department-wide	RSA Administration, Risk Management - legal services regarding personal injury litigation. Program code: CV03214539.	3,290.7	3,800.1	3,844.9
5301 Inter-Agency Receipts	Correct - Department-wide	RSA Corrections, Department-wide - legal services. Program code: CV03214550.	499.3	500.0	500.0

Personal Services Expenditure Detail
Department of Law

Scenario: FY2023 Governor (18673)
Component: Torts & Workers' Compensation (2719)
RDU: Civil Division (Excludes Janus) (35)

PCN	Job Class Title	Time Status	Retire Code	Barg Unit	Location	Salary Sched	Range / Step	Comp Months	Split / Count	Annual Salaries	COLA	Premium Pay	Annual Benefits	Total Costs	UGF Amount
03-0030	Attorney 4	FT	A	XE	Juneau	N05	24F	12.0		111,774	0	0	61,851	173,625	0
03-0043	Attorney 5	FT	A	XE	Anchorage	N00	25L	12.0		125,931	0	0	67,121	193,052	0
03-0089	Attorney 6	FT	A	XE	Anchorage	N00	26Q / R	12.0		158,067	0	0	78,389	236,456	0
03-0109	Associate Attorney 1	FT	A	XE	Juneau	N05	17L	12.0		76,947	0	0	48,885	125,832	0
03-0127	Law Office Assistant 1	FT	A	GP	Anchorage	200	11B / C	12.0		38,969	0	0	33,290	72,259	0
03-0132	Paralegal 2	FT	A	GP	Fairbanks	203	16L	6.0	**	36,894	0	0	23,126	60,020	0
03-0142	Attorney 4	FT	A	XE	Anchorage	N00	24F	12.0		106,451	0	0	59,869	166,320	0
03-0171	Law Office Assistant 1	FT	A	GP	Fairbanks	203	11C / D	12.0		41,420	0	0	34,202	75,622	0
03-0201	Law Office Assistant 1	FT	A	GP	Anchorage	200	11B / C	12.0		39,016	0	0	33,307	72,323	0
03-0214	Paralegal 2	FT	A	GP	Anchorage	200	16A / B	12.0		53,193	0	0	38,585	91,778	0
03-0218	Paralegal 2	FT	A	GP	Anchorage	200	16K	12.0		69,381	0	0	44,612	113,993	0
03-0230	Attorney 5	FT	A	XE	Anchorage	N00	25P	12.0		143,130	0	0	73,525	216,655	0
03-0238	Attorney 2	FT	A	XE	Anchorage	N00	20F	12.0		81,393	0	0	50,540	131,933	0
03-0241	Attorney 4	FT	A	XE	Anchorage	N00	24C / D	12.0		98,312	0	0	56,839	155,151	0
03-0248	Law Office Assistant 2	FT	A	SS	Anchorage	600	13B / C	12.0		48,007	659	0	38,254	86,920	0
03-0255	Attorney 4	FT	A	XE	Anchorage	N00	24K	12.0		113,490	0	0	62,490	175,980	0
03-0286	Attorney 4	FT	A	XE	Anchorage	N00	24F / J	12.0		109,327	0	0	60,940	170,267	0
03-0287	Law Office Assistant 2	FT	A	SS	Anchorage	600	13B / C	12.0		48,541	666	0	38,453	87,660	0
03-0297	Law Office Assistant 1	FT	A	GP	Anchorage	200	11B / C	12.0		39,601	0	0	33,525	73,126	0
03-0300	Attorney 4	FT	A	XE	Anchorage	N00	24J	12.0		109,902	0	0	61,154	171,056	0
03-0321	Associate Attorney 2	FT	A	XE	Anchorage	N00	19D / E	12.0		72,199	0	0	47,117	119,316	0
03-0346	Paralegal 1	FT	A	GP	Anchorage	200	14A / B	12.0		47,093	0	0	36,314	83,407	0
03-0364	Attorney 5	FT	A	XE	Anchorage	N00	25K	12.0		121,973	0	0	65,648	187,621	0
03-0375	Attorney 2	FT	A	XE	Anchorage	N00	20C / D	12.0		75,379	0	0	48,301	123,680	0
03-0376	Associate Attorney 1	FT	A	XE	Anchorage	N00	17K	12.0		71,000	0	0	46,671	117,671	0
03-0384	Attorney 3	FT	A	XE	Anchorage	N00	22E / F	12.0		91,482	0	0	54,296	145,778	0
03-0427	Paralegal 2	FT	A	GP	Anchorage	200	16C / D	12.0		57,047	0	0	40,020	97,067	0
03-0430	Attorney 3	FT	A	XE	Anchorage	N00	22A / B	12.0		80,909	0	0	50,360	131,269	0
03-1038	Attorney 5	FT	A	XE	Fairbanks	N03	25N	12.0		138,294	0	0	71,724	210,018	0
03-1047	Law Office Assistant 2	FT	A	SS	Juneau	605	13D / E	12.0		54,020	741	0	40,493	95,254	0
03-1231	Attorney 4	FT	A	XE	Anchorage	N00	24F	12.0		106,451	0	0	59,869	166,320	0
06-0517	Attorney 5	FT	A	XE	Anchorage	N00	25F / J	12.0		115,445	0	0	63,217	178,662	0

Note: If a position is split, an asterisk (*) will appear in the Split/Count column. If the split position is also counted in the component, two asterisks (**) will appear in this column. [No valid job title] appearing in the Job Class Title indicates that the PCN has an invalid class code or invalid range for the class code effective date of this scenario.

Personal Services Expenditure Detail
Department of Law

Scenario: FY2023 Governor (18673)
Component: Torts & Workers' Compensation (2719)
RDU: Civil Division (Excludes Janus) (35)

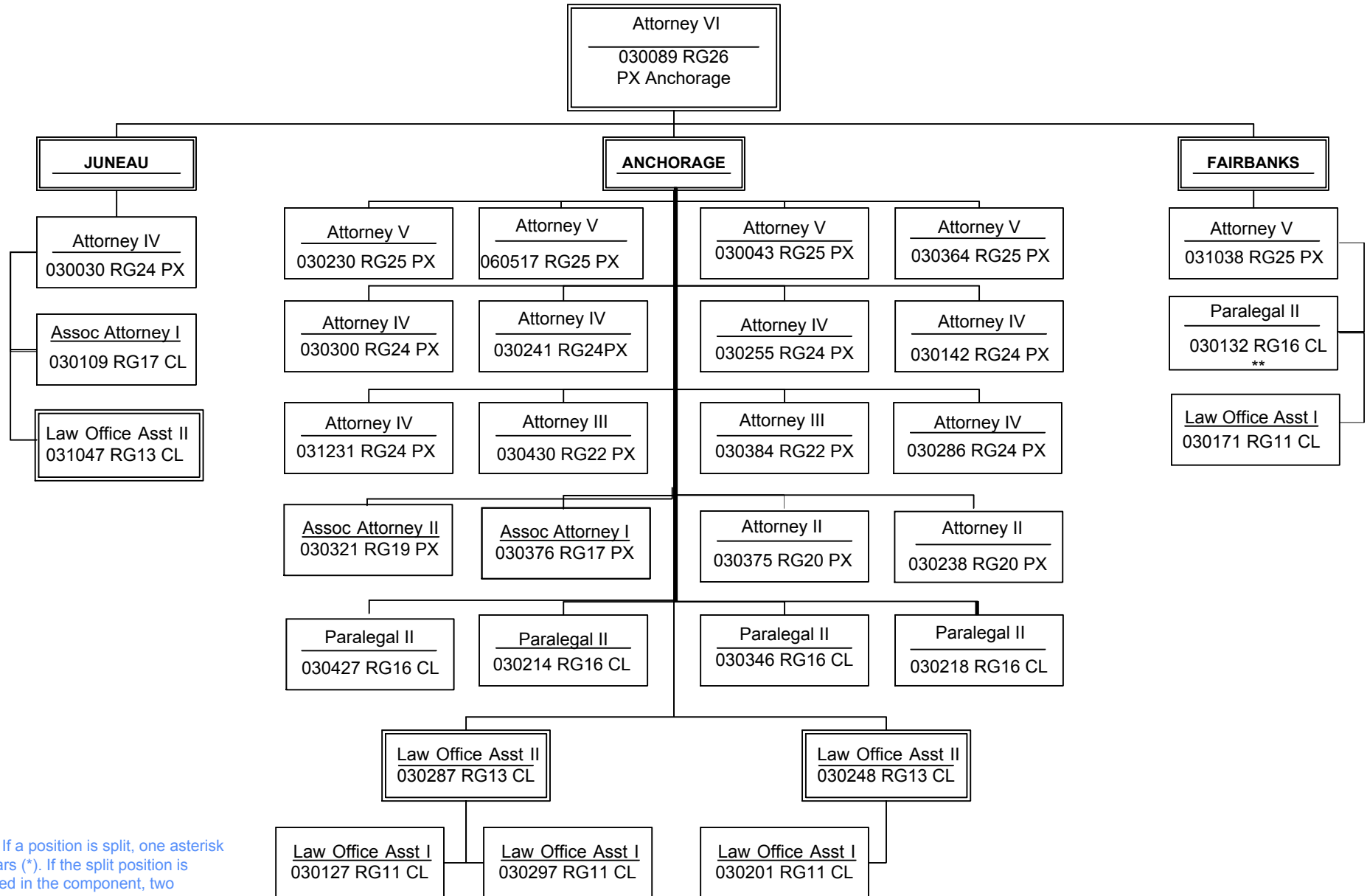
PCN	Job Class Title	Time Status	Retire Code	Barg Unit	Location	Salary Sched	Range / Step	Comp Months	Split / Count	Annual Salaries	COLA	Premium Pay	Annual Benefits	Total Costs	UGF Amount
		Total Positions	New	Deleted										Total Salary Costs:	2,681,038
														Total COLA:	2,066
	Full Time Positions:	32	0	0										Total Premium Pay:	0
	Part Time Positions:	0	0	0										Total Benefits:	1,622,987
	Non Permanent Positions:	0	0	0											
	Positions in Component:	32	0	0											
	Total Component Months:	378.0												Total Pre-Vacancy:	4,306,091
														Minus Vacancy Adjustment of 0.70%:	(30,291)
														Total Post-Vacancy:	4,275,800
														Plus Lump Sum Premium Pay:	0
														Personal Services Line 100:	4,275,800

PCN Funding Sources:	Pre-Vacancy	Post-Vacancy	Percent
1007 Interagency Receipts	4,306,091	4,275,800	100.00%
Total PCN Funding:	4,306,091	4,275,800	100.00%

Note: If a position is split, an asterisk (*) will appear in the Split/Count column. If the split position is also counted in the component, two asterisks (**) will appear in this column. [No valid job title] appearing in the Job Class Title indicates that the PCN has an invalid class code or invalid range for the class code effective date of this scenario.

CIVIL DIVISION

Torts and Workers' Compensation



Note: If a position is split, one asterisk appears (*). If the split position is counted in the component, two asterisks (**) appear.