

State of Alaska FY2023 Governor's Operating Budget

Department of Public Safety Alaska State Trooper Detachments Component Budget Summary

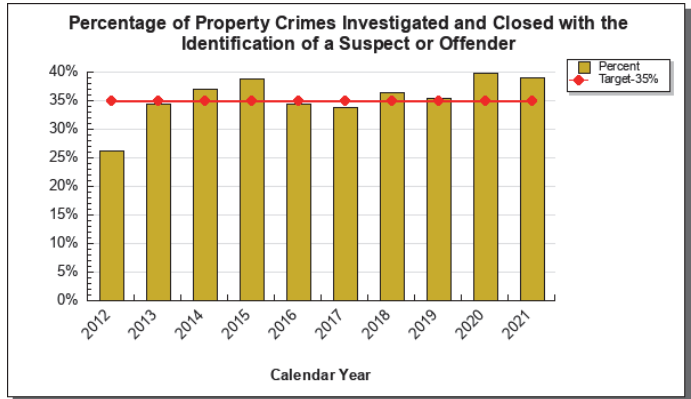
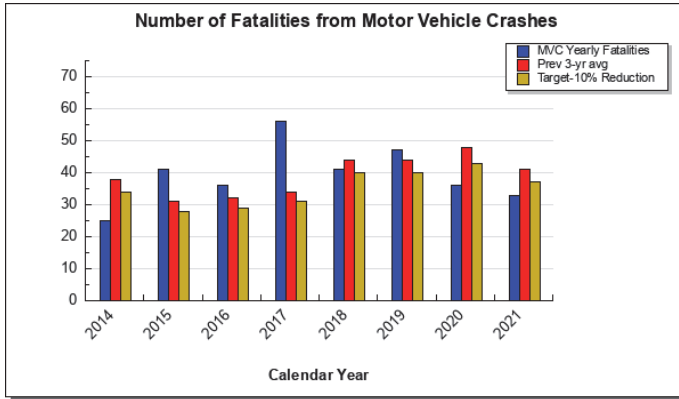
Component: Alaska State Trooper Detachments

Contribution to Department's Mission

Preserve public peace; protect life, property, and resources.

Results

(Additional performance information is available on the web at <https://omb.alaska.gov/results>.)



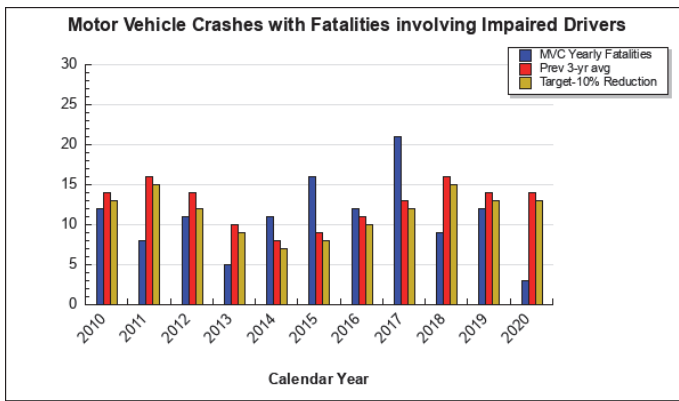
Core Services

- Highway safety.
- Preserve public peace.
- Provide additional rural law enforcement training.

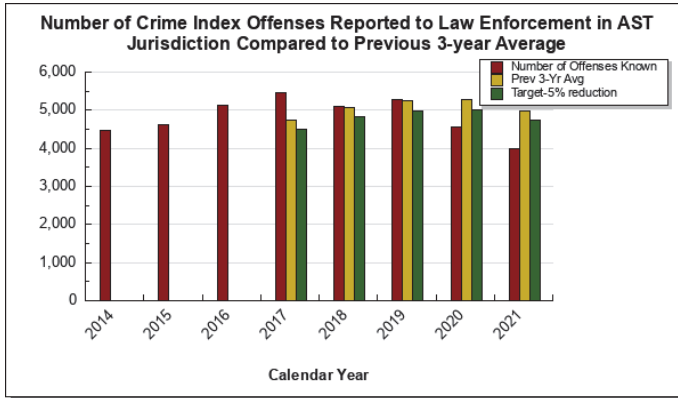
Measures by Core Service

(Additional performance information is available on the web at <https://omb.alaska.gov/results>.)

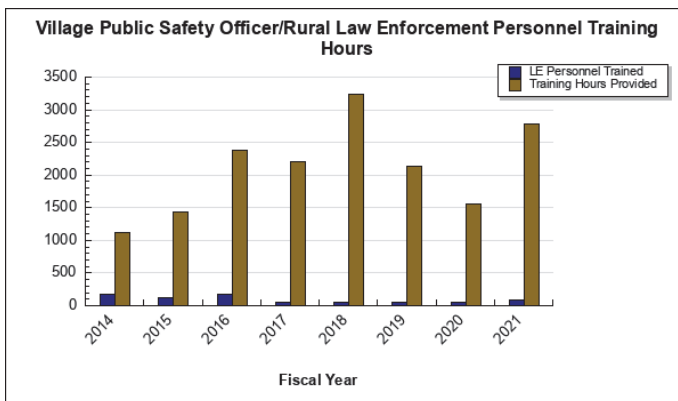
1. Highway safety.



2. Preserve public peace.



3. Provide additional rural law enforcement training.



Major Component Accomplishments in 2021

In FY2021, the Alaska State Troopers (AST) accomplished the following:

- Handled more than 131,738 calls for service within AST jurisdiction.
- Responded to more than 5,596 motor vehicle collisions.
- The Department of Public Safety (DPS) responded to 549 search and rescue related incidents in FY2021. These incidents included overdue hunters, snowmobilers, hikers, boaters, and medical evacuations off the road system. After investigation of these incidents, 401 incidents required SAR resources. Within these 401 incidents, 752 persons were assisted, located, or recovered.
- DPS and SAR partners statewide responded to 45 emergency beacon alerts and 12 reported aircraft crashes. The 12 aircraft crashes incidents included 5 aircraft fatality crashes, 2 aircraft injury crashes, and 5 aircraft crashes involving property damage only.
- Solved 84 percent of the homicides that occurred within AST jurisdiction or for which AST was asked to adopt the investigation from a borough, city, or municipality.
- Served or closed over 6871 warrants.
- Served or closed over 6314 writs.
- Served or closed over 1053 Domestic Violence Orders.
- Partnered with Department of Health and Social Services on Project Hope to help combat the opioid epidemic.
- Introduced the life-saving drug Naloxone into field use by Alaskan law enforcement officers.
- Implemented continued integration of other agencies into the Alaska Records Management System (ARMS).
- Conducted crime scene investigations for rural law enforcement.
- Held Alaska Association of Chiefs of Police Executive Development seminar.
- Held K-9 training for both AST and multiple municipal police agencies.
- Ongoing recertification / training in firearms, use of force and mental health awareness training.
- Held Rural Trooper Advanced Training covering topics related to domestic violence and sexual assault.

- Deployment of a Computer Aided Dispatch (CAD) application in the DPS Fairbanks dispatch center.

Recruitment: The Recruitment Unit continued with their robust advertising efforts, commensurate with those in FY2020, but with slightly lower overall application numbers attributable to the COVID-19 pandemic, as well as the changing public perception of employment in law enforcement precipitated by political events. This negative downturn in overall interest in the law enforcement profession is being seen across the nation, but has also had a positive effect on the number of lateral (prior law-enforcement experience) applications to the AST job class from other police agencies. Some of the increased lateral interest may also be attributable to the Recruitment Unit's targeted efforts to attract lateral applicants. The Recruitment Unit processed 1,480 applicants during FY2021, which was down from the 2,162 applications in FY2020. In FY2021, 34 state trooper recruits/lateral hires reported to the Academy in Sitka. The unit also processed 94 applications for Court Service Officer (CSO) positions.

The Recruitment Unit remained active with advertising and follow-up with potential applicants. The unit enjoyed a robust response to its updated Candidate Assistance video series, meeting the Recruitment Unit's goal of providing excellent guidance to applicants in order to prepare them for the hiring process and background investigation. The Recruitment Unit will continue to proactively engage with potential military applicants, citizens in rural Alaska, and students in colleges and universities. AST continues to refine its recruiting practices to target diverse applicants who are highly qualified.

Key Component Challenges

Core Police Services: Despite a reduction in needs for service in some areas due to the ongoing pandemic, Alaska's population continues to grow and requests for services in many areas continue to increase. Alcohol and drug involvement in crime remains a significant challenge. Ongoing technological changes and sophistication allow new criminal exploitations of the populace, including identity theft, child pornography, online child sexual exploitation, and computer fraud schemes. Terroristic threats to infrastructure require greater patrols, more response planning, and more efforts aimed toward public reassurance. The complexity of calls for service and the commensurate time involved in current requirements for documentation and reporting of events has resulted in Alaska State Troopers (AST) becoming an increasingly reactive organization.

For most of the commissioned personnel assigned to AST, proactive enforcement such as highway traffic patrols, burglary suppression, and community policing continue to be assigned a lower priority as personnel respond from one call for service to the next, day in and day out. This trend is expected to continue into FY2023 with areas such as proactive traffic enforcement being further negatively impacted due to insufficient resources being assigned to the Alaska Bureau of Highway Patrol. The contrast between the actual capabilities and resources of AST and the beliefs and expectations of the public requires significant staff time to be spent on public education.

AST's technology base continues to lag far behind other police and public service organizations in all these areas, however incremental progress is being made to address these issues. DPS is expanding the footprint of in-car video technology to AST and AWT vehicles in the Interior Region, while piloting new methods to collect, maintain, and retrieve the data. Currently, vehicles with cameras on the Kenai Peninsula, Mat-Su Valley and Glennallen, off load video via wireless network at a trooper post. Servers handling this data are still outdated and do not have redundancy. DPS is piloting offloading the video data through an encrypted wireless connection from each vehicle to the vendor's secure cloud storage solution. Upon completion of this phase in Interior Alaska, AST will look at deploying this method of offloading video data in other regions of the state. This method of offloading the video data will allow AST to expand patrol vehicle in-car camera system to locations that have never had in-car video capabilities due to cost and technological limitations. Also, AST personnel do not have body-worn camera capabilities and these evidence-capturing technologies are an expectation of today's general public. Systems of this sort require immense resources to store, retrieve, edit and distribute information which is requested for evidentiary or public records request purposes. DPS is studying the costs and feasibility of body-worn cameras for field personnel, considering new and emerging technology.

Another example of this is the significant lag in connectivity speeds that AST personnel experience in many of Alaska's rural areas. This results in tremendous challenges for personnel who are entering necessary information into police reports, the Alaska Records Management system (ARMS) and related databases. This problem exists due to infrastructure gaps and will be an issue no matter the platform for electronics records management.

AST continues to refine the merger of data between the Alaska Public Safety Information Network (APSIN) and ARMS. As the case activity is incorporated into ARMS, there have been some identified hurdles in clearly capturing all of the enforcement activity and subsequently reporting it in the same format as in prior years. AST also experiences gaps in data for reporting, due to lack of access to data being captured by dispatch centers contracted to provide dispatch services to AST. The recent addition of a computer-aided dispatch (CAD) application in DPS' dispatch center in Fairbanks with an interface to push data from CAD to ARMS has increased AST's ability to capture, research, and report on enforcement activity. AST expects to continue to see some deviation in reportable activity with some downward trends not accurately reflecting the current levels of true calls for service and responses. Prior years have seen improvement, but there are still challenges in mining the data to create accurate reports depicting a true picture of AST activity. AST anticipates that this will continue into FY2023. DPS has identified business process development and standardization as a key component to correctly collecting data for reporting purposes.

Court Security: The prisoner transport volume for the Division of Alaska State Troopers (AST) decreased from FY2020 to FY2021, primarily due to Covid-19 response and the severe restrictions on court activities. The division moved 86,374 prisoners in FY2020 and 40,197 prisoners in FY2021.

There were no prisoner escapes, and there have been no significant injuries to any personnel during the prisoner transports throughout the year.

While the number of court services officers (CSO) located around the state has remained consistent for many years, FY2021 saw a decrease in total CSO numbers, and showed a division-wide vacancy rate of 19.38% at the end of FY2021. The highest percentage of losses were in the Anchorage Judicial Services Unit, which had a vacancy rate of 25% (6 positions) at the end of FY2021.

Recruitment: The number of applicants for trooper positions over the past year has continued to increase from prior years. Of those who were recruited, a significant percentage of the applicants were attributable to the recruiting efforts done by working AST and AWT personnel, fresh new advertising videos, as well as the recruitment website and paid LinkedIn, Facebook and Instagram advertising. However, recruitment and retention continue to be the largest challenge for troopers and a significant increase in retirement-related separations is expected in FY2023 and FY2024. Although the recruitment unit has been successful in increasing applications, attracting *quality* applicants remains a challenge. The requirement that troopers be willing to attend a residential academy in Sitka, then eventually transfer to rural locations where housing and amenities are limited or inadequate creates recruitment challenges for AST that are not faced by other police agencies. AST competes with those agencies for personnel.

Rape and Domestic Violence: Alaska's rate of forcible rape is three times the national average. Rates of domestic violence are among the highest in the nation. The rates of victimization of Alaska Native women and children, particularly in rural Alaska, are even greater.

During FY2021, AST expanded its use of data from the Alaska Records Management System (ARMS) to streamline the review of Domestic Violence, Sexual Assault and Sexual Abuse of a Minor investigations. This data is now being reviewed quarterly. Trends are analyzed and the commensurate results are communicated to Detachment Commanders to help improve the quality of investigations and timeliness of finished reports.

DETACHMENT CHALLENGES –

On a statewide level, each Detachment has seen an increase in criminal activities associated with the influx of drug trafficking and abuse, particularly associated with the opioid epidemic. The downstream effects of drug crimes result in victimization of citizens who experience property crimes, thefts, robbery, and other person-on-person crimes at the hands of the drug criminals; further impacting AST's ability to efficiently provide proactive enforcement.

“A” Detachment South (Southeast Alaska) – In a continuing trend, socioeconomic opportunities within “A” Detachment's area of responsibility have grown, as have the requirements for the limited trooper resources. Southeast Alaska is one of the primary tourism meccas of the state. Tourism continues to increase with over one million cruise ship passengers expected to visit Southeast Alaska ports and communities throughout the upcoming year. The influx of these visitors to Southeast Alaska will further tax the available AST resources in this region, due to an anticipated increase of calls for service.

“A” Detachment South is comprised of three trooper posts located on Prince of Wales Island, Ketchikan, and Juneau.

The Ketchikan AST Post is finally set to be fully staffed by November of 2021. However, one of the Ketchikan-based troopers has recently stated he is tentatively planning on retiring early next spring.

Southeast Alaska has several Alaska Wildlife Trooper (AWT) vessels positioned throughout the region and two small DPS aircraft (Cessna 185 on floats and a Supercub on floats) based in Juneau and assigned to a sole AWT pilot. These are utilized in cooperation with AWT personnel for response and patrol related purposes. When DPS planes or watercraft are unavailable, chartering commercial aircraft, flying seat fare if available, taking the ferry, or not responding directly are the only viable options. Additionally, the AWT aircraft are not IFR rated, which greatly limits their response capabilities in inclement weather. Inclement weather is a regular occurrence and concern in SE Alaska. AWT vessels are also not a regular option due to the significant response time associated with the extended travel distances to most of the remote communities. Troopers are restricted to the timing, routes, and availability as dictated by the few charter operators available. DPS Court Services Officers routinely face similar issues when transferring prisoners from small community jails to large state correctional centers in Ketchikan and Juneau. Each community contractually limits the number of days a prisoner can be held before being transported to a state correctional center. Much like Western Alaska, this can be problematic when there is a need for an immediate response to investigate significant crimes, incidents, or transferring prisoners with medical or mental health issues. Air travel, whether scheduled or chartered, is expensive, limiting the number of routine visits made to each village.

Transportation costs, lodging, and man hours consume travel budgets. There are over a dozen villages and small communities in "A" Detachment South. Reaching most of the communities within the region requires transportation costs beyond the patrol vehicles assigned to individual troopers. This type of travel consumes time that cannot be allocated towards tangible and meaningful one-on-one service to the public. The detachment incurs lodging costs for overnight visits and unexpected weather conditions delay or hamper return to the respective post. In circumstances when troopers can use an assigned vehicle to provide service to a community, most locations are over an hour's drive from the post.

Radio and cell towers are few and communication is extremely limited in "A" Detachment South's remote communities and locations. Sometimes the only viable method of communication is by satellite phone, which is inherently unreliable in Southeast Alaska, due to the mountainous terrain and weather conditions. This creates impediments to law enforcement and AST's ability to provide efficient and effective public safety services. It also is a significant officer safety hazard to the trooper, in the event of an emergency, such as a combative suspect or medical issue. Issuing every trooper a satellite communications device would greatly enhance reliable communications throughout the area, but would come at a significant cost.

The number of search and rescue (SAR) missions increased from the previous year. SARs for the last several years have continued an upward trend, due in part to increased numbers of visiting tourists. SAR incidents can be tragic, producing high profile headlines and often involving horrific aircraft crashes related to the commercial travel and tourism industry. Incidents such as this have the potential to draw a great deal of scrutiny to training, capabilities, and overall response. These incidents regularly become high profile and incur significant unanticipated costs.

"A" Detachment North (Kenai Peninsula) – This region consists of the entire Kenai Peninsula and the west side of Cook Inlet (Tyonek and Beluga) with headquarters in Soldotna. The detachment's northern area of responsibility reaches as far north as Eagle River for search and rescue incidents. The Kenai Peninsula continues to be a preferred recreational destination for many of Alaska's residents during both the summer and winter. Trooper posts are located in Seward, Soldotna, and Anchor Point. Court Service Officers are assigned to Kenai and Anchor Point.

The detachment maintains a traffic enforcement presence along the Seward Highway south of milepost 75 due to a high number of serious injury and fatality crashes along with heavy seasonal use traffic during summer months. The City of Anchorage provides traffic enforcement and general law enforcement services on the Seward Highway north of milepost 75.

Seward troopers cover all calls for service from Lowell Point in Seward to mile 75 on the Seward Highway, including the Hope and Portage Highways, as well as the village of Chenega Bay. Search and rescue missions in Eagle River, Anchorage Hillside, and along Turnagain Arm are covered by this post. The demands covering Eagle River, Anchorage Hillside and along Turnagain Arm on resources out of Seward take troopers out of their core area and off the Seward Highway for extended times and increase costs to the detachment for travel and overtime to these areas, which could be more efficiently covered by troopers stationed closer.

Anchor Point recently received two new trooper positions and have filled the positions. Within the last year, there has continued to be an issue with abandoned vehicles on the southern peninsula. Working groups including the State of Alaska Department of Transportation, Department of Public Safety and the Kenai Peninsula Borough were established to review the issue and collaboratively work together to mediate the number of abandoned vehicles.

Maintaining a viable trooper presence in the outlying areas has been a continuing challenge. As a result, calls for service in Seward and Anchor Point after hours are often handled by Soldotna-based troopers, who are frequently 75 or more miles away. This can result in significant delays in response times and sometimes no response to routine calls for service.

Maintaining minimum staffing levels within the region is a challenge. The Soldotna Post is one of three training posts for new troopers. On average, approximately 50 percent of the assigned troopers have less than five years of experience, so the leadership roles fall to more tenured troopers who also serve as field training officers, which can put a heavy strain on staff. Turnover is fairly high, partly due to the fact that as new troopers reach the point in their experience level and knowledge to become fully contributing assets, they transfer to other locations/units. Soldotna is generally staffed with a sergeant and four troopers per shift. Due to military and injury leave along with normal absences due to personal leave and training, most shifts in Soldotna have at most three people on duty. Those troopers spend much of their patrol time going from call to call, which leaves very little time for adequate investigations or proactive work such as traffic enforcement, community outreach, and drug interdiction.

During the last year, the configuration and relationship with the Soldotna Public Safety Communications Center has changed. Administrative work processes that were previously handled by dispatch personnel have been shifted to Soldotna Post clerical staff. The additional new workflow has been challenging for the current clerical support staff at the Soldotna Post. An evaluation of current workload and cross training has allowed the detachment to better accomplish the additional workload. It is estimated that an additional two clerical positions are needed to keep processing the current workload.

Another key position which needs to be added to the department is a maintenance position. Currently, building maintenance, building cleaning, off-road vehicle and trailer maintenance is being completed by vendors, DOT&PF, and commissioned staff. Those responsible for maintenance have not been quick to respond to building needs and key maintenance has not been performed. This position would allow key maintenance items to be completed in a more timely manner and free up commissioned staff time for responding to calls for service.

“B” Detachment (Mat-Su Region) – "B" Detachment provides primary public safety services to nearly 100,000 permanent residents in the Mat-Su Borough, Valdez, Glennallen, and surrounding villages and frequently assists municipal police agencies providing services to an additional estimated 15,000 residents. In addition to full-time residents, many tourists and residents from other areas of Alaska regularly travel in and out of "B" Detachment's edges/borders for recreation and work year-round. Although the "B" Detachment area is not the largest in square miles, it services the highest population density of all other detachments. "B" Detachment also borders the City of Anchorage. Due to the closeness, many Alaska residents and non-residents commute to, from, and through "B" Detachment communities. "B" Detachment has three primary trooper offices or "posts" located in Palmer, Wasilla, and Glennallen.

The Mat-Su Borough is now the second most populated area in the state, second to the neighboring City of Anchorage. The borough accounts for about forty-seven percent of the area encompassed by "B" Detachment's borders. According to the July 2020 census, the population of the Mat-Su Borough was estimated at 107,081 residents. The US Census reported that the borough grew at just over 20% in the past ten years and is only the second region in Alaska to achieve a population greater than 100,000 residents.

The detachment has averaged 125 calls for service (CFS) per day, up from 115 CFS in 2019, when averaged over 12 months. In 2020, Mat-Su Troopers received 2,533 calls coded as Disturbances or Assaults, 2,100 property crime-related calls, and responded to 2,140 traffic incidents, including Motor Vehicle Crashes, Driving Under the Influence calls, and criminal traffic offenses. The core Mat-Su Valley area takes in over 90% of the call volume for the detachment, averaging 115 calls per day, spread between an average of 11 Troopers on duty each day. The average B Detachment Trooper in the Mat-Su handles 140 calls for service per month or 1,680 annually, ranging from civil disputes and neighborhood disagreements to active shootings, home invasion robberies, and homicides. Troopers in "B" Detachment also face increasing risks of personal injury. The volume of police pursuits and

officer-involved shootings has risen markedly in 2020 and 2021. It continues to grow while the number of troopers remains the same. Incidents of note include an officer involved shooting between a Gulkana man and an Alaska State Trooper north of Glennallen in September of 2020 which resulted in a two-day search to find the shooter, a Wasilla police officer was shot in the wrist during a traffic stop in December 202 and an armed man who took a family hostage in Wasilla in March of 2021, and many others.

"B" Detachment troopers are constantly faced with prioritizing calls for service, leaving little time for proactive law enforcement patrols, follow-up investigations, or traffic enforcement during regular duty hours. Overall overtime costs are high due to mandatory staffing requirements for safety. Troopers work many of their regular days off, including extended duty days and holidays, to meet the job demands. Despite a 2018 study that recommended a 57% increase in trooper staffing in "B" Detachment, the number of positions has remained stagnant. Since 2015, the Wasilla Police Department has grown by over 33%, while AST's staffing has changed little. Troopers often must rely upon officers from Palmer and Wasilla Police Departments to respond to priority calls for service either as the primary responder or to provide backup to a lone trooper. These calls are often well outside the city limits of either city.

"B" Detachment continues to respond to high numbers of property-related crimes primarily driven by an epidemic of illicit drugs. The Criminal Suppression Unit (CSU) continues to be highly successful. In 2020, the CSU recovered \$475,236.95 in stolen property, seized/recovered over 101 firearms that were either reported stolen or found in possession of felons, and recovered 32 stolen vehicles/ATVs. Further, they continue to be the driving force in the Mat-Su Valley in solving complex criminal cases such as robberies and home invasions and identifying and arresting serial burglary suspects. The CSU augments their colleagues in patrol when staffing shortages dictate and works jointly with other investigative and neighboring law enforcement entities while focusing on high crime density areas.

Four correctional centers are located within the detachment's edges/borders: Goose Creek Correctional Center, Point Mackenzie Correctional Farm, Palmer Correctional Center, and Mat-Su Pretrial Facility. Court Services Officer (CSO) positions are needed to ensure officer safety and adequate coverage to meet increasing demand at the Palmer courts and carry out judicial services core functions. Work includes transporting prisoners from correctional facilities to court appearances and other appointments, providing security to the court, protecting the judiciary, and serving documents to include subpoenas, summons, writs, protective orders, complaints, and other notices. If there aren't adequate numbers of CSOs to handle the workload, these functions fall to State Troopers. Criminal activity at the correctional centers requires AST response and investigation.

Glennallen Post is normally staffed with a sergeant and three troopers. A fourth trooper position was added in FY2020, but has yet to be filled. Between September 1 and December 1, 2020, Glennallen AST handled 250 Alaska Records Management System incidents and over 300 calls for service with a Sergeant and two or three troopers. To address statewide staffing concerns that are impacting the ability to keep Glennallen staffed, AST has been utilizing troopers from other areas to pick up overtime shifts for coverage in Glennallen. Troopers work closely with Copper River Native Association village public safety officers to police the numerous road-accessible villages in the Copper River area.

"B" Detachment Child Investigative Unit (CAIU) has an extremely heavy caseload. An offsite Sergeant supervises three CAIU investigators as the CAIU is housed at the Children's Place in Wasilla. As a result, "B" Detachment CAIU receives the highest volume of referrals and reports of harm from the Office of Children's Services. Recent data analysis revealed that the "B" Detachment CAIU continues to receive large numbers of Reports of Harm when compared to other areas in the state. Reports of harm will continue to rise with the growing population and the addition of the Office of Children's Services caseworkers assigned to the Mat-Su Valley. The CAIU investigates the worst cases of child sexual abuse and neglect, but many cases do not receive the attention they need or deserve due to the heavy caseload.

"B" Detachment continues to invest in Crisis Intervention Training (CIT) for many troopers. A CIT academy was not held in 2020 due to COVID restrictions, however, an academy is scheduled in the fourth quarter of 2021. "B" Detachment command has been working closely with the State Mental Health Trust and the Mat-Su Health Foundation on the "Crisis Now" model of mental health intervention and diversion from law enforcement response that has become the model across much of the nation. These partnerships will provide an option local Troopers have never had before to serve citizens in a mental health crisis. The goal is to help people experiencing mental health crises but who have not committed a crime, by getting them necessary help while reducing the time troopers spend on non-criminal contacts.

"B" Detachment Command continues to communicate with local leaders to establish a better relationship, formulate plans, and build strong partnerships to address increasing community needs and concerns. "B" Detachment has regular meetings with the Mat-Su Borough Community Councils for Public Safety comprised of leaders from local community councils and has established internal procedures that allow sergeants and patrol troopers to make regular appearances at council meetings to enhance proactive community relations culture within "B" Detachment.

The foundation of better community relations encompasses six pillars: Building Trust and Legitimacy, Policy and Oversight, Technology and Social Media, Community Policing and Crime Reduction, Training and Education, and Officer Wellness & Safety.

"C" Detachment (Western Alaska) – The largest geographical detachment within AST, its population is liberally scattered throughout an area larger than the state of California. "C" Detachment consists of the area west of the 152nd vertical longitudinal line. This encompasses the Aleutian Islands, the Kodiak Island archipelago, Bristol Bay, Yukon Kuskowkim, Norton Sound, and Northwest Arctic Borough areas. These areas are considered "Bush" Alaska and apart from Kodiak, are all considered off the road system. Travel to these areas from an urban center such as Anchorage is only possible by aircraft. Travel from the larger regional "hub" communities such as Kodiak, Dillingham, Bethel, Nome, and Kotzebue are by aircraft all year and dependent upon the season by other modes of travel such as watercraft, off road vehicles including four wheelers or snow machines, depending on weather conditions. Troopers are required to travel using all these methods during routine patrol and for emergency response. Emergency response times for a trooper to reach a community in Western Alaska can range from several minutes or hours to several days, depending on the location and the weather. These geographical challenges are often combined with minimal staffing and a lack of modern infrastructure, creating significant operational issues. Additional factors include the lack of housing and adequate office space, creating hardships for troopers and negatively affecting their ability to accomplish the mission of the department.

"C" Detachment has the highest proportion per capita of sexual assault and sexual abuse of a minor cases in the entire state, which are a primary focus in the region. Efforts to provide advanced training to C Detachment troopers to effectively investigate these serious crimes continued in FY2021, utilizing the best-practices model of Sexual Assault Response Teams and a growing number of Child Advocacy Centers in the region. The detachment has been utilizing a unit in Bethel known as the Violent Offenders Unit in the Yukon-Kuskokwim Delta for over six years. In FY2022 the unit will be assimilated into the Alaska Bureau of Investigation (ABI). In the future, the ABI will establish investigative units in the main hub posts to focus on homicides, sexual assaults, and other felony assaults throughout Western Alaska.

During FY2021, "C" Detachment continued to see an increase in violent crimes reported, akin to what was reported in the University of Alaska's, "2020 C Detachment Patrol Staffing Study." Cell phone technology continues to expand into rural Alaska, allowing most citizens to call to report crime and request assistance. This technology links rural Alaska in a much more comprehensive manner than in the past. Although this is positive in that it provides the public with greater access to law enforcement, it increases the number of calls that must be screened and prioritized. To address this, "C" Detachment continues to utilize the dispatch center in Fairbanks to provide dispatch services to answer after-hours calls and initiate incident information for all detachment posts. This has improved documentation of calls for service and response to citizen requests for assistance. Additionally, 9-1-1 calls in Western Alaska are now directed to the Fairbanks dispatch center, enhancing the level of service provided.

Significant effort has been made to increase investigative training for troopers assigned to C Detachment. This training uses multiple delivery methods to provide uniformity across the detachment and ensure current practices and investigative skills are consistent with national best practices. First line supervisors and administrative support staff are actively involved with identifying topics and resources to enhance content and quality of courses offered.

Coordination continues with other agencies to improve relationships throughout the region. C Detachment is relied upon by many agencies, both State and Federal, in accomplishing their missions; these partnerships are vital in working to meet the overall public safety needs of communities. C Detachment works closely with the court system to move prisoners from DOC facilities in large communities to smaller regional contract jails for court proceedings. This creates significant logistical and financial impacts to C Detachment resources.

C Detachment continues to utilize the alternate work schedule for small communities throughout the Detachment.

This model consists of Troopers who work two weeks in the community on extended shifts and then have a two week off-duty period outside of the community. This model provides trooper coverage and reduced response times in the furthest reaches of rural Alaska. Expanded implementation of this schedule would spread the significant workload in Western Alaska and allow troopers to be placed in communities that have not had a law enforcement presence in the past. This schedule has been implemented for communities across C Detachment to include Togiak, Hooper Bay, Emmonak, St. Mary's, Aniak, Bethel, Unalakleet, and Selawik. Communities located near these areas also benefit from having a trooper located in these locations.

"C" Detachment has a significant number of search and rescue incidents every year. These numbers highlight the need for additional resources to support these efforts in C Detachment. There is an ongoing need for fixed wing aircraft, helicopters, and civilian pilots due to the decreased availability of vendors to provide charter services to the department in rural areas. These department resources are used to respond to significant incidents throughout C Detachment where time is of the essence for preservation of life and limb. Civilian pilot positions have been added in Nome, Kotzebue, and Bethel to include full time pilots living in those communities as well as support pilots based in Anchorage. While having these pilots has significantly increased operational capability within the detachment, the uncertain future of commercial aircraft operations in the region, such as airline closures and reduced flights highlights the need for continued focus on independent DPS response capability. The limited number of available DPS aircraft and limitations of the type of aircraft owned by the department will continue to provide challenges.

"D" Detachment (Fairbanks Region) – The Alaska State Troopers' "D" Detachment covers an area of 370,000 square miles. The headquarters of "D" Detachment is in Fairbanks and serves as one of AST's three training posts. Naturally, this training post sees significant turnover, as relatively new Troopers move on to rural assignments. "D" Detachment also has Trooper outposts in Delta Junction, Tok, Galena, Nenana, Healy, and Cantwell.

Troopers in "D" Detachment are responsible for managing search and rescue operations throughout Interior Alaska. These missions involve the use of an assigned A Star Helicopter and a Cessna 206 aircraft. "D" Detachment Troopers often manage incidents with assistance from AWT, the Alaska Army National Guard, the Alaska Air National Guard and the Civil Air Patrol.

During FY2021, the Fairbanks General Investigation Unit and outpost troopers handled 36 sexual assault investigations and 56 sexual abuse of a minor investigations, two homicides, one attempted murder, and two officer-involved shootings. Currently, all reported property crime investigations within "D" Detachment are conducted by troopers from the uniformed patrol unit with some assistance provided by members of the Fairbanks Criminal Suppression Unit (CSU), General Investigations Unit, and the Statewide Drug Enforcement Unit on a limited and case-by-case basis.

Based upon the success of the Palmer Criminal Suppression Unit, "D" Detachment created a Fairbanks CSU designed to respond to burglaries, thefts, arsons, and to assist with community-oriented training and programs. This unit consists of one sergeant and two troopers. Uniformed patrol troopers are primarily tasked with responding to crimes in progress, so as a result, they do not have the time to devote to burglary and property crime investigations without incurring significant amounts of overtime or falling behind with the other investigations they are assigned. The Fairbanks CSU reviews property crime investigations and focuses on significant thefts or cases where crimes appear to be related. Although this unit is focused on property crimes, it also supports other detachment emergencies as needed.

The Fairbanks Rural Unit is comprised of a sergeant and five troopers who service an area the size of Texas, which contains 27 villages. Of those five Troopers, two of them are posted in Galena. The unit has a dedicated single engine visual flight rule aircraft which flew over 30,000 miles in FY2021. There is a Cessna 172 which was recently assigned to the Galena Post. The Rural Unit's reportable case load decreased from 256 reportable incidents to 169 reportable cases, largely due to COVID-19. A key challenge resulting from the COVID-19 epidemic is a major decrease in charter availability which resulted in the inability to travel during emergencies. The Rural Unit has been increasing its collaboration with tribal governments and participates in civil diversion in an effort to empower tribal government to regulate lower-level crime. They oversee two Village Public Safety Officers in the region as well as assisting with Tanana Chief's Tribal Peace Officers. The Rural Unit intends to work with Tanana Chief's Conference to increase the number of tribal courts in the region, which increases the safety of citizens by providing easier access to Tribal Protective Orders and low-level crime mitigation.

Fairbanks Troopers deployed an information-sharing tool known as the Interior Alaska Briefing Board, which connects all dispatchers and members of law enforcement in the Alaska Interior in an effort to share investigative information. The information is shared via a group email, which includes the Alaska Criminal Intelligence Center.

The state housing for troopers in Cantwell was renovated and housing renovations in Galena are underway.

AST Fairbanks has made significant progress in developing a strategic partnership with the Tanana Chiefs Conference (TCC) leadership. The “D” Detachment Commander participated in the annual three-day TCC Partnership Boat Ride, which traveled from Nenana to Tanana, then to Rampart and Stevens Village to meet with community members and address concerns.

There is concern about the Fairbanks Post facility’s aging emergency generator. The DPS dispatch center which covers a majority of the state’s geography is housed in this facility. Replacing and upgrading this generator to adequately provide the necessary power during an outage is important.

“D” Detachment aggressively investigates all cases of Missing and Murdered Indigenous People in the Alaska Interior. The remote locations where these incidents often occur and difficulty traveling to these locations creates significant challenges for investigators and Troopers. Weather, terrain, and the lack of available all-weather air transportation resources add degrees of difficulty to this challenge.

The increased ability for people to reach more remote locations with the advances in recreational transportation and eco-tourism naturally increases the number of Search and Rescues in the Alaskan Interior. The A Star helicopter has been a valuable resource in addressing this challenge.

AST Director’s Office – The Division of AST Director’s Office continues to implement a vision of delivering essential public safety services to the citizens of Alaska with priorities assigned to regions that do not have other public safety agencies in place. Efficiency and effectiveness in delivery these services is achieved through continual evaluation of business processes that optimize results using existing resources.

AST will continue to implement forward-thinking technology initiatives in its efforts to improve effectiveness.

AST intends to continue efforts to improve responses to major crimes investigations as well as applying resources to further lower the rate of sexual assaults and sexual abuse of minors in Alaska.

Highway safety continues to be a high priority for AST and additional efforts will be expended to secure grant funding to allow for proactive patrols which are conducted solely on overtime by regular patrol personnel.

AST will continue robust State Trooper recruitment and retention efforts, improving the diversity of commissioned officers and minimizing the inefficiencies and costs associated with non-retirement separations.

AST will be working to convert additional post locations to two-on, two-off posts where appropriate, to provide cost savings while enhancing the level of service to those areas.

AST will continue to support the training of VPSOs and to highlight the importance of the VPSO program in rural Alaska.

AST will continue efforts to document the state of DPS/AST facilities and the need to repair, replace, or upgrade current facilities.

Significant Changes in Results to be Delivered in FY2023

Alaska State Troopers (AST) is continuing to aggressively pursue technologies to better capture and collect information and evidence by DPS as members of the public report criminal and suspicious activity. DPS deployed Computer Aided Design (CAD) software at the end of FY2020, and in early FY2021, connected the CAD with the Alaska Records Management System (ARMS) to increase the data being housed in a single law enforcement database and reduce redundancy of data entry into multiple systems. AST will continue to refine business processes

and procedures to aid in data collection, including the implementation of an online reporting system that the public can utilize to report non-emergency activity to AST. These new programs will enable the division to conduct its duties more efficiently.

AST anticipates providing access to ARMS to other agencies; both state and municipal. This will continue to create significant efficiencies for both DPS and other agencies and will exponentially increase the information-sharing capabilities for Alaska law enforcement. Long term, this will undoubtedly result in more timely identification of offenders as well as the ability to address some of the current trends which affect the public on a statewide basis. This effort was started in FY2014 and will continue into FY2023.

AST will continue its active support of the previously implemented Strategic Highway Safety Plan to reduce the number of serious injury and fatality collisions on Alaska's roadways. This includes proactive enforcement efforts, educational presentations and specialized fatal and serious injury crash investigations.

AST Director: The director has a major role in implementing statewide law enforcement policy. The director's staff is responsible for administering the division's budget and carrying out policy. Balancing law enforcement service needs of various areas of the state with the very limited number of commissioned officers and resources requires constant review and evaluation.

Under collective bargaining agreements, the director's staff must devote a good deal of time to considering the transfer of individual officers, their educational and career development needs, and their training and discipline. The director must also develop a practice and environment that promotes planning for greater efficiency of processes and more prudent use of public funding.

The director of the AST is also responsible for organizational succession planning through the preparation and mentoring of suitable candidates for higher command positions. The director's office implements new technologies and modern business practices to achieve greater efficiencies, while remaining attentive to the needs of the workforce to maintain productivity and facilitate recruitment and retention.

Key issues facing the AST Director's Office are human and physical resources and facilities. Performing basic public safety functions across a very large area is extremely challenging, while striving to maintain public trust and security and employee safety. It is a continual balancing act to allocate resources that are directly responsible for responding to calls for service while also ensuring that proactive enforcement activities are implemented. Facilities in many locations are inadequate to support the needs of personnel resources. A number of facilities are very old and in need of significant renovation to bring them up to a level of reasonable suitability, putting them in a condition where they are able to provide a safe and secure office environment.

The final and likely the most pressing issue, is the complex emergency dispatch services conglomeration that AST must deal with. Two of the three primary dispatch centers that AST must rely are not part of AST. AST contracts with the City of Wasilla to provide dispatch services for the Mat-Su Borough and Copper River Basin and the Kenai Peninsula Borough for the Kenai Peninsula. With the current arrangement, AST is left to address ever-rising cost increases being presented by the contract dispatch centers, along with reductions in services and no governance board to provide AST with meaningful input into the daily operations of the centers and the services delivered by both contract centers.

These arrangements are not conducive to AST (and the department) providing comprehensive, consistent, standardized dispatch services to citizens and troopers across the state, whose safety is the department's responsibility. The department is working towards developing ways that is can standardize workflows around the state while providing the best service possible to Alaskans.

Statutory and Regulatory Authority

DPS-Powers and duties of department (AS 44.41.020)
State Troopers (AS 18.65.010 - AS 18.65.110)
Police Protection (AS 18.65.010 - AS 18.65.790)
Law enforcement duties (AS 18.65.010 - AS 18.65.086)
Controlled Substances (AS 11.71.010 - AS 11.71.900)

Judicial Services (AS 22.20.100 - AS 22.20.140)
Prisoner Transportation (AS 33.30.071 and AS 33.30.081)
Search & Rescue (AS 18.60.120 - AS 18.60.175)
Village Public Safety Officer Definition (AS 01.10.060(c)(7)(C))
VPSO Program (AS 18.65.670)
VPSO Regulations (13 AAC 96.010-900)
Concealed Handgun Permits (AS 18.65.700)
Security Guard Licensing (AS 18.65.400 - AS 18.65.410)
Sex Offender Registration (AS 12.63.010 - AS 12.63.100)
Central Registry of Sex Offenders (AS 18.65.087)
Department to assist other agencies (AS 18.65.090)
Document and disseminate information regarding homicides (AS 44.41.040)
Document and investigate missing persons (AS 18.65.610)
Investigate fires resulting from crimes (AS 18.70.030)
Investigate sexual assault and child exploitation (AS 18.65.086)
DUI Forfeiture Requirements (AS 28.35.036-.037)
DPS DNA collection and registration requirements (AS 44.41.035)
Duty of Law Enforcement to Provide VCCB information (AS 18.67.175)
Rights of Crime Victims to be notified orally and in writing by Law Enforcement (AS 12.61.010)

Contact Information
<p>Contact: Elizabeth Dunayski, Administrative Services Director Phone: (907) 465-5501 E-mail: elizabeth.dunayski@alaska.gov</p>

Alaska State Trooper Detachments Personal Services Information					
Authorized Positions			Personal Services Costs		
	FY2022 Management Plan	FY2023 Governor			
Full-time	400	373	Annual Salaries		39,489,441
Part-time	0	0	COLA		1,595,496
Nonpermanent	11	11	Premium Pay		5,263,781
			Annual Benefits		24,695,580
			<i>Less 7.05% Vacancy Factor</i>		<i>(5,008,998)</i>
			Lump Sum Premium Pay		231,900
Totals	411	384	Total Personal Services		66,267,200

Position Classification Summary					
Job Class Title	Anchorage	Fairbanks	Juneau	Others	Total
Accounting Technician 1	1	0	0	0	1
Administrative Assistant 1	2	1	0	2	5
Administrative Assistant 2	3	1	0	3	7
Administrative Assistant 3	1	0	0	0	1
Captain DPS	3	1	0	2	6
Court Services Officer	1	10	4	23	38
Criminal Justice Specialist	0	0	0	1	1
Criminal Justice Technician 1	5	2	1	9	17
Criminal Justice Technician 2	2	0	0	6	8
Division Director - Px	1	0	0	0	1
Forensic Technician 2	0	0	0	1	1
Information System Coordinator	1	0	0	0	1
Lieutenant DPS	5	2	0	5	12
Mail Services Courier	1	0	0	0	1
Major DPS	2	0	0	0	2
Office Assistant 2	4	4	0	9	17
Office Assistant 3	0	0	1	12	13
Office Assistant 4	0	1	0	2	3
Procurement Specialist 1	1	0	0	0	1
Program Coordinator 1	2	0	0	0	2
Public Safety Technician 2	1	0	1	2	4
Secretary	1	0	0	0	1
Sergeant DPS	4	7	1	27	39
State Trooper	8	34	3	151	196
Training Specialist 1	1	0	0	0	1
Victim/Witness Paralegal 1	4	0	0	1	5
Totals	54	63	11	256	384

Component Detail All Funds
Department of Public Safety

Component: Alaska State Trooper Detachments (2325)
RDU: Alaska State Troopers (160)

Non-Formula Component

	FY2021 Actuals	FY2022 Conference Committee	FY2022 Authorized	FY2022 Management Plan	FY2023 Governor	FY2022 Management Plan vs FY2023 Governor	
71000 Personal Services	66,783.5	73,075.4	73,254.4	70,203.8	66,267.2	-3,936.6	-5.6%
72000 Travel	2,843.6	1,455.7	1,455.7	2,045.7	2,440.6	394.9	19.3%
73000 Services	16,566.0	10,905.2	10,905.2	10,321.8	7,383.2	-2,938.6	-28.5%
74000 Commodities	965.9	952.7	952.7	952.7	1,160.2	207.5	21.8%
75000 Capital Outlay	1,197.7	48.7	48.7	48.7	680.2	631.5	1296.7%
77000 Grants, Benefits	0.0	0.0	0.0	0.0	0.0	0.0	0.0%
78000 Miscellaneous	0.0	0.0	0.0	0.0	0.0	0.0	0.0%
Totals	88,356.7	86,437.7	86,616.7	83,572.7	77,931.4	-5,641.3	-6.8%
Fund Sources:							
1004 Gen Fund (UGF)	86,003.4	10,841.6	11,020.6	7,976.6	2,189.7	-5,786.9	-72.5%
1005 GF/Prgm (DGF)	6.8	100.0	100.0	100.0	100.0	0.0	0.0%
1007 I/A Rcpts (Other)	2,346.5	416.1	416.1	416.1	561.7	145.6	35.0%
1092 MHTAAR (Other)	0.0	80.0	80.0	80.0	80.0	0.0	0.0%
1271 ARPA Rev R (UGF)	0.0	75,000.0	75,000.0	75,000.0	75,000.0	0.0	0.0%
Unrestricted General (UGF)	86,003.4	85,841.6	86,020.6	82,976.6	77,189.7	-5,786.9	-7.0%
Designated General (DGF)	6.8	100.0	100.0	100.0	100.0	0.0	0.0%
Other Funds	2,346.5	496.1	496.1	496.1	641.7	145.6	29.3%
Federal Funds	0.0	0.0	0.0	0.0	0.0	0.0	0.0%
Positions:							
Permanent Full Time	421	417	417	400	373	-27	-6.8%
Permanent Part Time	0	0	0	0	0	0	0.0%
Non Permanent	7	8	8	11	11	0	0.0%

Change Record Detail - Multiple Scenarios with Descriptions
Department of Public Safety

Component: Alaska State Trooper Detachments (2325)
RDU: Alaska State Troopers (160)

Scenario/Change Record Title	Trans Type	Totals	Personal Services	Travel	Services	Commodities	Capital Outlay	Grants, Benefits	Miscellaneous	Positions		NP
										PFT	PPT	
***** Changes From FY2022 Conference Committee To FY2022 Authorized *****												
FY2022 Conference Committee												
	ConfCom	86,437.7	73,075.4	1,455.7	10,905.2	952.7	48.7	0.0	0.0	417	0	8
1004 Gen Fund		10,841.6										
1005 GF/Prgm		100.0										
1007 I/A Rcpts		416.1										
1092 MHTAAR		80.0										
1271 ARPA Rev R		75,000.0										
FY2021 PSEA CSO and DFM lump sum payment equivalent to 4% of annual wage												
	OTI	179.0	179.0	0.0	0.0	0.0	0.0	0.0	0.0	0	0	0
1004 Gen Fund		179.0										
PSEA CSO and DFM lump sum payment equivalent to 4% of annual wage: \$179.0												
Subtotal		86,616.7	73,254.4	1,455.7	10,905.2	952.7	48.7	0.0	0.0	417	0	8
***** Changes From FY2022 Authorized To FY2022 Management Plan *****												
Transfer Office Assistant 2 (12-2114) from Alaska Bureau of Judicial Services to Support Online Reporting Group												
	Trin	70.9	70.9	0.0	0.0	0.0	0.0	0.0	0.0	1	0	0
1004 Gen Fund		70.9										
Transfer full-time Office Assistant 2 (12-2114), range 10, located in Ketchikan, from the Alaska Bureau of Judicial Services in support of the online reporting group.												
Transfer Victim/Witness Paralegal 1 (12-?102) from AK Bureau of Investigation for Domestic Violence and Sexual Assault												
	Trin	122.6	122.6	0.0	0.0	0.0	0.0	0.0	0.0	1	0	0
1004 Gen Fund		122.6										
Transfer full-time Victim/Witness Paralegal 1, (12-?102), range 14, located in Anchorage from Alaska Bureau of Investigation to Alaska State Trooper Detachments in Bethel due to the high incidence of domestic violence, sexual assault, and sexual abuse of a minor cases in Western Alaska.												
Transfer State Troopers (12N19004 & 12N19007) from AK Bureau of Investigation for Domestic Violence and Sexual Assault												
	Trin	246.6	246.6	0.0	0.0	0.0	0.0	0.0	0.0	0	0	2
1004 Gen Fund		246.6										
Transfer two non-permanent State Troopers (12-N19004, 12-N19007), range 77, located in Bethel and Fairbanks, from the Alaska Bureau of Investigation. These positions focus on providing vital follow-up investigation activities specific to domestic violence, sexual assault, and sexual abuse of minor cases. These follow-up investigative activities enable the compilation of a more thorough report to document cases and support the overall goal of increasing prosecutions and holding offenders accountable.												

Transfer Authority from Alaska Bureau of Judicial Services to Align with Anticipated Expenditures

Change Record Detail - Multiple Scenarios with Descriptions
Department of Public Safety

Component: Alaska State Trooper Detachments (2325)

RDU: Alaska State Troopers (160)

Scenario/Change Record Title	Trans Type	Totals	Personal Services	Travel	Services	Commodities	Capital Outlay	Grants, Benefits	Miscellaneous	Positions		
										PFT	PPT	NP
1004 Gen Fund	Trin	241.8	241.8	0.0	0.0	0.0	0.0	0.0	0.0	0	0	0
Transfer authority from personal services from the Alaska Bureau of Judicial Services to cover anticipated personnel costs.												
Transfer General Investigative Unit Troopers and Sergeants to Alaska Bureau of Investigation												
1004 Gen Fund	Trout	-3,587.9	-3,587.9	0.0	0.0	0.0	0.0	0.0	0.0	-17	0	0
Transfer General Investigative Unit (GIU) troopers and sergeants to improve the efficiency by increasing the quality and consistency of statewide investigations. The GIU handles the most serious of crimes.												
This change record will transfer the following positions with funding:												
Full-time Sergeant (12-1097), range 79, located in Soldotna												
Full-time State Trooper (12-1874), range 77, located in Soldotna												
Full-time State Trooper (12-1912), range 77, located in Soldotna												
Full-time State Trooper (12-1913), range 77, located in Soldotna												
Full-time Sergeant (12-6013), range 79, located in Palmer												
Full-time State Trooper (12-1984), range 77, located in Palmer												
Full-time State Trooper (12-1983), range 77, located in Palmer												
Full-time State Trooper (12-1917), range 77, located in Wasilla												
Full-time State Trooper (12-1914), range 77, located in Palmer												
Full-time State Trooper (12-1560), range 77, located in Palmer												
Full-time State Trooper (12-1485), range 77, located in Palmer												
Full-time Sergeant (12-1612), range 79, located in Fairbanks												
Full-time State Trooper (12-1046), range 77, located in Fairbanks												
Full-time State Trooper (12-1065), range 77, located in Fairbanks												
Full-time State Trooper (12-1409), range 77, located in Fairbanks												
Full-time State Trooper (12-1430), range 77, located in Fairbanks												
Full-time State Trooper (12-1981), range 77, located in Fairbanks												
Transfer Lieutenant (12-3085) to Alaska Bureau of Investigation to Support General Investigative Unit												
1004 Gen Fund	Trout	-172.9	-172.9	0.0	0.0	0.0	0.0	0.0	0.0	-1	0	0
Transfer full-time Lieutenant (12-3085), range 24, located in Anchorage to the Alaska Bureau of Investigation to oversee the General Investigative Unit and improve the efficiency by increasing the quality and consistency of statewide investigations.												
Add Split-Funded Position (12-N21002) to Position Counts												
	PosAdj	0.0	0.0	0.0	0.0	0.0	0.0	0.0	0.0	0	0	1

Change Record Detail - Multiple Scenarios with Descriptions
Department of Public Safety

Component: Alaska State Trooper Detachments (2325)

RDU: Alaska State Troopers (160)

Scenario/Change Record Title	Trans Type	Totals	Personal Services	Travel	Services	Commodities	Capital Outlay	Grants, Benefits	Miscellaneous	Positions		NP
										PFT	PPT	
Add non-permanent State Trooper (12-N21002), range 77, located in Anchorage, which is a shared position between the Alaska State Troopers and the Village Public Safety Officer Program. The position was established in and will be counted as part of the Alaska State Trooper Detachments.												
Transfer Administrative Officer 2 (12-1894) to the Division of Administrative Services Due to Centralization												
	Trout	0.0	0.0	0.0	0.0	0.0	0.0	0.0	0.0	-1	0	0
Transfer full-time Administrative Officer 2 (12-1894), range 19, located in Anchorage to the Division of Administrative Services to align with reorganization of Administrative Officer positions.												
Align Authority with Anticipated Expenditures												
	LIT	0.0	0.0	590.0	-590.0	0.0	0.0	0.0	0.0	0	0	0
Transfer authority from contractual to travel to cover anticipated personnel costs.												
Transfer Authority from Special Projects to Align with Anticipated Expenditures												
	Trin	34.9	28.3	0.0	6.6	0.0	0.0	0.0	0.0	0	0	0
1004 Gen Fund		34.9										
Transfer authority from Special Projects to cover anticipated personnel and services costs.												
Subtotal		83,572.7	70,203.8	2,045.7	10,321.8	952.7	48.7	0.0	0.0	400	0	11
***** Changes From FY2022 Management Plan To FY2023 Governor *****												
Reverse MH Trust: Implement CIT Training												
	OTI	-80.0	-40.0	-30.0	-5.0	-5.0	0.0	0.0	0.0	0	0	0
1092 MHTAAR		-80.0										
Reverse Mental Health Trust recommendation to reflect zero-based mental health budget.												
Reverse FY2021 PSEA CSO and DFM lump sum payment equivalent to 4% of annual wage												
	OTI	-179.0	-179.0	0.0	0.0	0.0	0.0	0.0	0.0	0	0	0
1004 Gen Fund		-179.0										
Reverse FY2022 one-time appropriation.												
FY2023 Salary and Benefit Adjustments												
	SalAdj	147.7	147.7	0.0	0.0	0.0	0.0	0.0	0.0	0	0	0
1004 Gen Fund		147.7										
Includes: FY2023 Supervisory Unit 1% COLA: \$4.8												
FY2023 SU BU - Supervisory Employees (SS) 1% COLA: \$6.0												

Change Record Detail - Multiple Scenarios with Descriptions
Department of Public Safety

Component: Alaska State Trooper Detachments (2325)
RDU: Alaska State Troopers (160)

Scenario/Change Record Title	Trans Type	Totals	Personal Services	Travel	Services	Commodities	Capital Outlay	Grants, Benefits	Miscellaneous	Positions		NP
										PFT	PPT	
FY2023 SU BU - Supervisory Employees - Law Enforcement (S2) 3% COLA: \$136.9												
FY2023 PERS Actuarial Rate Adjustment to 24.79% Ch9 SLA2021 (SB55)												
	SalAdj	-2,354.5	-2,354.5	0.0	0.0	0.0	0.0	0.0	0.0	0	0	0
1004 Gen Fund		-2,350.1										
1007 I/A Rcpts		-4.4										
Includes: FY2023 Adjustment for PERS ARM Board Approved Rate of 24.79% (from 30.11%): \$-2,354.5												
FY2023 Executive Health Insurance, SBS, and Risk Management Rate Changes												
	SalAdj	1.7	1.7	0.0	0.0	0.0	0.0	0.0	0.0	0	0	0
1004 Gen Fund		1.7										
FY2023 Change Partially Exempt & Exempt Executive (EE) - Health Insurance from \$1,555 to \$1,685; SBS and Risk Management Rates: \$1.7												
FY2023 Supervisory Employees Health Insurance, SBS, and Risk Management Rate Changes												
	SalAdj	16.3	16.3	0.0	0.0	0.0	0.0	0.0	0.0	0	0	0
1004 Gen Fund		16.3										
FY2023 Change Supervisory Employees (SS) - Health Insurance from \$1,555 to \$1,685; SBS and Risk Management Rates: \$16.3												
FY2023 Supervisory Employees Health Insurance, SBS, and Risk Management Rate Changes												
	SalAdj	34.7	34.7	0.0	0.0	0.0	0.0	0.0	0.0	0	0	0
1004 Gen Fund		34.7										
FY2023 Change Supervisory Employees - Law Enforcement (S2) - Health Insurance from \$1,555 to \$1,685; SBS and Risk Management Rates: \$34.7												
FY2023 General Government Unit SBS and Risk Management Rate Changes												
	SalAdj	2.3	2.3	0.0	0.0	0.0	0.0	0.0	0.0	0	0	0
1004 Gen Fund		2.3										
FY2023 Change General Government Unit (GG, GP, GY, GZ) - SBS, and Risk Management Rates: \$2.3												
FY2023 Public Safety Employees SBS and Risk Management Rate Changes												
	SalAdj	1.6	1.6	0.0	0.0	0.0	0.0	0.0	0.0	0	0	0
1004 Gen Fund		1.6										
FY2023 Change Public Safety Employees - CSOs and Fire Marshalls (A2) SBS and Risk Management Rates: \$1.6												
FY2023 Public Safety Employees SBS and Risk Management Rate Changes												
	SalAdj	28.2	28.2	0.0	0.0	0.0	0.0	0.0	0.0	0	0	0

Change Record Detail - Multiple Scenarios with Descriptions
Department of Public Safety

Component: Alaska State Trooper Detachments (2325)
RDU: Alaska State Troopers (160)

Scenario/Change Record Title	Trans Type	Totals	Personal Services	Travel	Services	Commodities	Capital Outlay	Grants, Benefits	Miscellaneous	Positions		NP
										PFT	PPT	
1004 Gen Fund		28.2										
FY2023 Change Public Safety Employees (AA) - SBS and Risk Management Rates : \$28.2												
FY2023 Public Safety Employees COLA Increase												
	SalAdj	1,304.7	1,304.7	0.0	0.0	0.0	0.0	0.0	0.0	0	0	0
1004 Gen Fund		1,304.7										
FY2023 PSEA BU - (AA) 3% COLA: \$1,304.7												
FY2023 Public Safety Employees COLA Increase												
	SalAdj	102.4	102.4	0.0	0.0	0.0	0.0	0.0	0.0	0	0	0
1004 Gen Fund		102.4										
FY2023 PSEA CSOs and Fire Marshalls BU - (A2) 2% COLA: \$102.4												
MH Trust: Crisis Intervention Team and Behavioral Health Training and Program for First Responders												
	IncT	80.0	40.0	30.0	5.0	5.0	0.0	0.0	0.0	0	0	0
1092 MHTAAR		80.0										
This project maintains a critical component of the Trust's disability justice focus area by providing foundational knowledge for law enforcement and first responders on mental health disorders and cognitive impairments, best practices for responding to mental and behavioral health issues, laws centered around Title 47, the state's community behavioral health system to municipal law enforcement, the Alaska State Troopers (AST), and other first responders.												
Through this training, the Department of Public Safety (DPS) and the Alaska Police Standards Council (APSC) support first responder behavioral health training and programs for APSC certified municipal and State law enforcement, APSC certified municipal and State correctional officers, APSC certified probation officers, and village police safety officers. This training includes but is not limited to 40 hours of crisis intervention team training that adheres to the nationally recognized Memphis Model that will provide Alaska's first responders with the tools to best respond to calls for service involving persons with mental and behavioral health issues and who may be experiencing a mental health crisis.												
Add Authority for Recurring Reimbursable Services Agreements												
	Inc	150.0	0.0	150.0	0.0	0.0	0.0	0.0	0.0	0	0	0
1007 I/A Rcpts		150.0										
Add authority for recurring Reimbursable Service Agreements (RSAs). Currently, not all recurring RSAs are able to utilize budgeted authority. This causes administrative delays getting structure established and leads to occasional delays in services provided. Additional authority will improve processing time and avoid impact on services.												
Add Authority to Increase Staffing and Operational Capacity within the Alaska State Troopers												
	Inc	404.4	328.4	0.0	56.0	20.0	0.0	0.0	0.0	4	0	0
1004 Gen Fund		404.4										

Change Record Detail - Multiple Scenarios with Descriptions
Department of Public Safety

Component: Alaska State Trooper Detachments (2325)
RDU: Alaska State Troopers (160)

Scenario/Change Record Title	Trans Type	Totals	Personal Services	Travel	Services	Commodities	Capital Outlay	Grants, Benefits	Miscellaneous	Positions		
										PFT	PPT	NP
<p>Add four Criminal Justice Technician 1 positions, located in Anchorage (2), Soldotna (1), Juneau (1) to increase staffing and operational capacity to an adequate level to address demands for statewide law enforcement services. The Alaska crime rate continues to increase with many locations having little to no law enforcement staff or support requiring Troopers to respond to calls in that area. Current staffing levels create delays when responding to calls regarding domestic violence, sexual assaults, drug related crimes, murders, and various other reported crimes. Several years ago, the US Attorney declared a law enforcement emergency in rural Alaska due to insufficient or lack of law enforcement staffing and support. The Department has made progress in staffing in rural Alaska; however, additional efforts are needed. This increase in authority will assist with these issues and bring operational capacity to more appropriate staffing levels based on statewide needs and allow the ability to respond to calls in a more appropriate timeframe.</p>												
Expand Alaska State Trooper In-Car Video Storage Services												
1004 Gen Fund	Inc	631.5	0.0	0.0	0.0	0.0	631.5	0.0	0.0	0	0	0
<p>Currently, Alaska State Trooper (AST) vehicles on the Kenai Peninsula, Mat-Su Valley, and Copper River Basin are equipped with in-car video systems. These systems off load video files to on-premise servers to store and manage the videos. This requires the Department to maintain a storage and wireless offloading infrastructure at each post. Trooper Posts outside those listed above do not have in-car camera systems.</p> <p>The Department of Public Services (DPS) is currently working on proof of concept to deploy in-car video equipment to AST and Alaska Wildlife Trooper vehicles on the road system in the Interior. This project will not only add in-car vehicles to the interior based DPS vehicle fleet, but also pivot from on-premise storage and infrastructure at each post location to a secure cloud storage solution provided by the vendor and offloading of video data utilizing FirstNet network capabilities directly from the DPS vehicles.</p> <p>This change in transmittal and storage of video data will remove the State from the need to procure and maintain the transmittal and storage infrastructure at each trooper post. Each camera system will also be warranted and covered by the vendor for the life of the contracts, which will allow DPS to have replacement gear sent by the vendor as opposed to purchasing ad hoc parts to keep individual vehicle in-car camera systems running.</p>												
Add Funding for Annual Gear Replacement for State Troopers												
1004 Gen Fund	Inc	500.0	0.0	0.0	0.0	500.0	0.0	0.0	0.0	0	0	0
<p>The Department recently made a central list of basic required equipment for State Troopers to be replaced annually on a rotating schedule. Additional authority is required to assure replacement of uniforms, leather gear, audio recorders, etc. on an annual basis.</p>												
Add Funding to Support Special Emergency Response Team												
1004 Gen Fund	Inc	125.0	0.0	0.0	62.5	62.5	0.0	0.0	0.0	0	0	0
<p>Add funding to support the Special Emergency Response Team (SERT) for training and supplies.</p>												
Add Funding to Support Domestic Violence and Sexual Assault & Missing and Murdered Indigenous Persons												
1004 Gen Fund	Inc	818.8	685.8	0.0	98.0	35.0	0.0	0.0	0.0	7	0	0

Change Record Detail - Multiple Scenarios with Descriptions
Department of Public Safety

Component: Alaska State Trooper Detachments (2325)

RDU: Alaska State Troopers (160)

Scenario/Change Record Title	Trans Type	Totals	Personal Services	Travel	Services	Commodities	Capital Outlay	Grants, Benefits	Miscellaneous	Positions			
										PFT	PPT	NP	
<p>Add funding to support the Missing and Murdered Indigenous Persons (MMIP) and Domestic Violence and Sexual Assault (DVSA) prevention and response programs in Alaska State Trooper Detachments and Alaska Bureau of Investigation. These positions establish and support a victim/witness coordination program and support DVSA training for law enforcement.</p> <p>The following positions will be added: Full-time Forensic Technician 2 (12-#178), range 15, located in Bethel Full-time Training Specialist 1 (12-#179), range 16, located in Anchorage Full-time Program Coordinator 1 (12-#190), range 18, located in Anchorage Full-time Victim/Witness Paralegal 1 (12-#191), range 14, located in Anchorage Full-time Victim/Witness Paralegal 1 (12-#192), range 14, located in Anchorage Full-time Victim/Witness Paralegal 1 (12-#193), range 14, located in Anchorage Full-time Victim/Witness Paralegal 1 (12-#194), range 14, located in Anchorage</p>													
Add Funding to Establish Office Space in Togiak and Hooper Bay													
1004 Gen Fund	Inc	200.0	200.0	0.0	0.0	200.0	0.0	0.0	0.0	0.0	0	0	0
Troopers in Togiak and Hooper Bay are currently working out of their housing unit due to a lack of office space. Additional funds will allow them to establish office space in these communities.													
Add Full Funding for New FY2021 Filled Positions													
1004 Gen Fund	Inc	460.2	460.2	0.0	0.0	0.0	0.0	0.0	0.0	0.0	0	0	0
Thirty-six new positions were added to Alaska State Troopers in FY2021. These positions were initially funded at approximately 75% to account for anticipated delays in recruitment. This increment is needed to fully fund the filled positions for FY2023.													
Transfer Authority from Rural Trooper Housing to Align with Anticipated Expenditures													
1004 Gen Fund	Trin	325.0	325.0	0.0	0.0	325.0	0.0	0.0	0.0	0.0	0	0	0
Transfer authority from Rural Trooper Housing for anticipated services costs.													
Transfer Authority from Search and Rescue to Align with Anticipated Expenditures													
1004 Gen Fund	Trin	258.5	258.5	0.0	0.0	258.5	0.0	0.0	0.0	0.0	0	0	0
Transfer authority from Search and Rescue for anticipated services costs.													
Transfer Authority from Special Projects to Align with Anticipated Expenditures													
1004 Gen Fund	Trin	37.9	37.9	0.0	0.0	37.9	0.0	0.0	0.0	0.0	0	0	0

Change Record Detail - Multiple Scenarios with Descriptions
Department of Public Safety

Component: Alaska State Trooper Detachments (2325)

RDU: Alaska State Troopers (160)

Scenario/Change Record Title	Trans Type	Totals	Personal Services	Travel	Services	Commodities	Capital Outlay	Grants, Benefits	Miscellaneous	Positions		NP
										PFT	PPT	
Transfer authority from Special Projects for anticipated contractual costs. The remaining authority is sufficient to cover anticipated expenditures.												
Transfer Authority from Prisoner Transportation to Align with Anticipated Expenditures												
	Trin	249.9	0.0	249.9	0.0	0.0	0.0	0.0	0.0	0	0	0
1004 Gen Fund		249.9										
Transfer authority from Prisoner Transportation travel for anticipated travel costs.												
Transfer Funding for Administrative Officer 2 (12-1894) to Administrative Services Due to Centralization												
	Trout	-123.8	-123.8	0.0	0.0	0.0	0.0	0.0	0.0	0	0	0
1004 Gen Fund		-123.8										
Transfer funding for full-time Administrative Officer 2 (12-1894), range 19, located in Anchorage, to the Division of Administrative Services to align with reorganization of Administrative Officer positions.												
Transfer General Investigative Unit to Alaska Bureau of Investigations												
	Trout	-2,409.8	-2,409.8	0.0	0.0	0.0	0.0	0.0	0.0	-11	0	0
1004 Gen Fund		-2,409.8										
Transfer General Investigative Unit (GIU) troopers, sergeants, and support staff to improve the efficiency by increasing the quality and consistency of statewide investigations. The GIU handles the most serious of crimes.												
The following positions are transferring with funding:												
Full-time Sergeant (12-1415), range 79, located in Bethel												
Full-time State Trooper (12-1371), range 77, located in Bethel												
Full-time State Trooper (12-4419), range 77, moved from Saint Michaels to Bethel												
Full-time State Trooper (12-2105), range 77, moved from Saint Michaels to Bethel												
Full-time State Trooper (12-2108), range 77, moved from Ambler to Bethel												
Full-time State Trooper (12-2107), range 77, moved from Ambler to King Salmon												
Full-time State Trooper (12-2103), range 77, located in Nome												
Full-time State Trooper (12-2110), range 77, located in Kotzebue												
Full-time Office Assistant 3 (12-1402), range 11, located in Palmer												
Full-time Office Assistant 3 (12-1621), range 11, located in Fairbanks												
Full-time Forensic Technician 2 (12-4222), range 15, located in Fairbanks												
Transfer Program Coordinator 2 (12-1972) to Alaska Bureau of Investigation to Support Missing Persons Program												
	Trout	-143.2	-143.2	0.0	0.0	0.0	0.0	0.0	0.0	-1	0	0
1004 Gen Fund		-143.2										

Transfer full-time Program Coordinator 2 (12-1972), range 20, located in Anchorage, to Alaska Bureau of Investigation to give the position access to needed

Change Record Detail - Multiple Scenarios with Descriptions
Department of Public Safety

Component: Alaska State Trooper Detachments (2325)

RDU: Alaska State Troopers (160)

Scenario/Change Record Title	Trans Type	Totals	Personal Services	Travel	Services	Commodities	Capital Outlay	Grants, Benefits	Miscellaneous	Positions		NP
										PFT	PPT	
resources and align the tasks and duties of the position.												
Transfer Program Coordinator 1 (12-3202) from Aircraft Section to Align with Operations												
1004 Gen Fund	Trin	94.4	94.4	0.0	0.0	0.0	0.0	0.0	0.0	1	0	0
Transfer full-time Journey Aircraft Mechanic, reclassified to Program Coordinator 1 (12-3202), range 18, located in Anchorage from the Alaska Wildlife Troopers Aircraft Section to align with operations. This position assumes responsibility to maintain all aircraft record in accordance with FAA laws, department policy, and standard operating procedures.												
Transfer Office Assistant 2 (12-1635) to Criminal Justice Information Systems Program to Align with Operations												
1004 Gen Fund	Trout	-74.7	-74.7	0.0	0.0	0.0	0.0	0.0	0.0	-1	0	0
Transfer full-time Office Assistant 2 (12-1635), range 10, located in Anchorage, to Criminal Justice Information Systems Program for reorganization initiative. This change supports consolidation of duties provided by the public facing components for the Department's headquarters building, provides consistency in workflows, and expands and improves customer service for the public.												
Transfer Division Operations Manager (12-3208) to Criminal Justice Information Systems to Align with Operations												
1004 Gen Fund	Trout	-81.1	-81.1	0.0	0.0	0.0	0.0	0.0	0.0	-1	0	0
Transfer full-time Division Operations Manager (12-3208), range 24, located in Anchorage, to the Criminal Justice Information Systems Program to align with operations. This position serves as a single point of contact for all telecommunication, software application, and radio frequency components that currently reside in the Department.												
Transfer Telecommunications Planner (12-2000) to Information Systems to Align with Operations												
1004 Gen Fund	Trout	-127.2	-127.2	0.0	0.0	0.0	0.0	0.0	0.0	-1	0	0
Transfer Telecommunications Planner (12-2000), range 21, located in Anchorage, to Information Systems to align with operations.												
Transfer Analyst/Programmer 2/3/4 (12-1891) to Information Systems to Align with Operations												
1004 Gen Fund	Trout	-113.1	-113.1	0.0	0.0	0.0	0.0	0.0	0.0	-1	0	0
Transfer Analyst/Programmer 2/3/4 (12-1891), range 16/18/20, located in Anchorage, to Information Systems to align with operations.												
Transfer Public Information Office to Commissioner's Office for Reorganization Initiative												
1004 Gen Fund	Trout	-1,059.4	-1,059.4	0.0	0.0	0.0	0.0	0.0	0.0	-9	0	0

Change Record Detail - Multiple Scenarios with Descriptions
Department of Public Safety

Component: Alaska State Trooper Detachments (2325)
RDU: Alaska State Troopers (160)

Scenario/Change Record Title	Trans Type	Totals	Personal Services	Travel	Services	Commodities	Capital Outlay	Grants, Benefits	Miscellaneous	Positions		NP
										PFT	PPT	
Transfer Public Information Office (PIO) positions to the Commissioner's Office to align with operations. These recently reclassified positions facilitate the timely response to thousands of Alaska Public Records Act Requests that the Department receives each year and realigns other PIO staff to match operational structure.												
The following positions are being transferred to the Commissioner's Office:												
Full-time Emergency Services Dispatcher 2 (12-1630), range 16, located in Soldotna – reclassified to Department Communications Manager, range 22, located in Anchorage												
Full-time Emergency Services Dispatcher 1 (12-1329), range 15, located in Soldotna – reclassified to Research Analyst 4, range 21, located in Anchorage												
Full-time Emergency Services Dispatcher 1 (12-1117), range 15, located in Soldotna – reclassified to Research Analyst 2/3, range 16/18, located in Anchorage												
Full-time Emergency Services Dispatcher 1 (12-1404), range 15, located in Soldotna – reclassified to Research Analyst 2/3, range 16/18, located in Anchorage												
Full-time Emergency Services Dispatcher 1 (12-1419), range 15, located in Soldotna – reclassified to Paralegal 2, range 16, located in Anchorage												
Full-time Information Officer 3 (12-1675), range 20, located in Anchorage												
Full-time Information Officer 2 (12-2087), range 17, located in Anchorage												
Full-time Information Officer 2 (12-1210), range 17, located in Anchorage												
Full-time Visual Information Specialist (12-1922), range 17, located in Anchorage												
Transfer Aircraft Pilot (12-1255) to Alaska Wildlife Troopers Aircraft Section for Pilot Consolidation												
	Trout	0.0	0.0	0.0	0.0	0.0	0.0	0.0	0.0	-1	0	0
Transfer full-time Aircraft Pilot (12-1255), range 22, located in Fairbanks, to Alaska Wildlife Troopers Aircraft Section to align with operations.												
Transfer (27) Positions and Authority to Establish Dispatch Services												
	Trout	-4,870.7	-2,879.2	-5.0	-1,976.5	-10.0	0.0	0.0	0.0	-27	0	0
1004 Gen Fund		-4,870.7										

The Department manages a dispatch center in Fairbanks that dispatches for Alaska State Troopers (AST) C and D Detachments, as well as portions of AST A Detachment. The center covers a land area of over 415,000 square miles, serving approximately 263,000 residents of the state. The center operates on a 24/7 basis, answering emergent and routine calls for service and dispatches those calls to State Troopers, Wildlife Troopers, Court Services Officers, a few local fire departments, and others around the state.

DPS also contracts with MATCOM in the Mat-Su Valley and the Soldotna Public Safety Communications Center on the Kenai Peninsula for the remainder of the dispatch services. This new component will monitor and report all dispatch services for the Department.

Transfer (25) Emergency Services Dispatchers, (1) Emergency Dispatch Supervisor, and (1) Program Coordinator 2 along with the annual expenses associated with the dispatch center.

Full-time Emergency Services Dispatcher 1 (10-5047), range 15, located in Fairbanks
 Full-time Emergency Services Dispatcher 1 (12-1007), range 15, located in Fairbanks
 Full-time Emergency Services Dispatcher 2 (12-1078), range 16, located in Fairbanks
 Full-time Emergency Services Dispatcher 1 (12-1080), range 15, located in Fairbanks
 Full-time Emergency Services Dispatcher 1 (12-1081), range 15, located in Fairbanks

Change Record Detail - Multiple Scenarios with Descriptions
Department of Public Safety

Component: Alaska State Trooper Detachments (2325)

RDU: Alaska State Troopers (160)

Scenario/Change Record Title	Trans Type	Totals	Personal Services	Travel	Services	Commodities	Capital Outlay	Grants, Benefits	Miscellaneous	Positions		
										PFT	PPT	NP
Full-time Emergency Services Dispatcher 1 (12-1082), range 15, located in Fairbanks												
Full-time Emergency Services Dispatcher 1 (12-1083), range 15, located in Fairbanks												
Full-time Emergency Services Dispatcher 1 (12-1117), range 15, located in Soldotna												
Full-time Emergency Services Dispatcher 1 (12-1119), range 15, located in Soldotna												
Full-time Emergency Services Dispatcher 1 (12-1167), range 15, located in Fairbanks												
Full-time Emergency Services Dispatcher 1 (12-1171), range 15, located in Fairbanks												
Full-time Emergency Services Dispatcher 1 (12-1239), range 15, located in Soldotna												
Full-time Program Coordinator 2 (12-1403), range 20, located in Anchorage												
Full-time Emergency Services Dispatcher 1 (12-1419), range 15, located in Soldotna												
Full-time Emergency Services Dispatcher 1 (12-1420), range 15, located in Fairbanks												
Full-time Emergency Services Dispatcher 1 (12-1427), range 15, located in Fairbanks												
Full-time Emergency Services Dispatcher 1 (12-1442), range 15, located in Fairbanks												
Full-time Emergency Services Dispatcher 1 (12-1458), range 15, located in Fairbanks												
Full-time Emergency Services Dispatcher 1 (12-1459), range 15, located in Fairbanks												
Full-time Emergency Services Dispatcher 1 (12-1470), range 15, located in Fairbanks												
Full-time Emergency Services Dispatcher 1 (12-1507), range 15, located in Fairbanks												
Full-time Emergency Services Dispatcher 1 (12-1508), range 15, located in Fairbanks												
Full-time Emergency Services Dispatcher 1 (12-1624), range 15, located in Fairbanks												
Full-time Emergency Services Dispatcher 1 (12-1630), range 15, located in Fairbanks												
Full-time Emergency Services Dispatcher 1 (12-1632), range 15, located in Fairbanks												
Full-time Emergency Services Dispatcher 1 (12-1633), range 15, located in Fairbanks												
Full-time Emergency Dispatch Supervisor (12-1775), range 18, located in Fairbanks												
Full-time Emergency Services Dispatcher 1 (12-5310), range 15, located in Fairbanks												
Add Positions to Increase Staffing and Operational Capacity within the Alaska State Troopers												
PosAdj		0.0	0.0	0.0	0.0	0.0	0.0	0.0	0.0	14	0	0

Add 14 new positions to increase staffing and operational capacity to an adequate level to address demands for statewide law enforcement services. The Alaska crime rate continues to increase with many locations having little to no law enforcement staff or support requiring Troopers to respond to calls in those areas. Current staffing levels create delays when responding to calls regarding domestic violence, sexual assaults, drug related crimes, murders, and various other reported crimes. Several years ago, the US Attorney declared a law enforcement emergency in rural Alaska due to insufficient or lack of law enforcement staffing and support. The Department has made progress in staffing in rural Alaska; however, additional efforts are needed. These positions will assist with these issues and bring operational capacity to more appropriate staffing levels based on statewide needs and allow the ability to respond to calls in a more appropriate timeframe.

The following positions are added:

- Full-time Public Safety Technician 2 (12-#172), range 11, located in Juneau
- Full-time Public Safety Technician 2 (12-#173), range 11, located in Soldotna
- Full-time Sergeant (12-#176), range 79, located in Anchorage
- Full-time State Troopers (12-#177), range 77, located in Tok
- Full-time State Troopers (12-#180), range 77, located in Palmer

Change Record Detail - Multiple Scenarios with Descriptions
Department of Public Safety

Component: Alaska State Trooper Detachments (2325)
RDU: Alaska State Troopers (160)

Scenario/Change Record Title	Trans Type	Totals	Personal Services	Travel	Services	Commodities	Capital Outlay	Grants, Benefits	Miscellaneous	Positions		NP
										PFT	PPT	
Full-time State Troopers (12-#181), range 77, located in Palmer												
Full-time State Troopers (12-#182), range 77, located in Palmer												
Full-time State Troopers (12-#183), range 77, located in Palmer												
Full-time State Troopers (12-#184), range 77, located in Palmer												
Full-time State Troopers (12-#185), range 77, located in Wasilla												
Full-time State Troopers (12-#186), range 77, located in Wasilla												
Full-time State Troopers (12-#187), range 77, located in Wasilla												
Full-time State Troopers (12-#188), range 77, located in Wasilla												
Full-time State Troopers (12-#189), range 77, located in Wasilla												
Funding request is forthcoming as the Department demonstrates the need based on recruitment efforts.												
Align Authority with Anticipated Expenditures												
LIT		0.0	2,400.0	0.0	-2,000.0	-400.0	0.0	0.0	0.0	0	0	0
Transfer authority from services to personal services for anticipated personnel costs. The remaining authority is sufficient to cover anticipated expenditures.												
Totals		77,931.4	66,267.2	2,440.6	7,383.2	1,160.2	680.2	0.0	0.0	373	0	11

Line Item Detail (1676)
Department of Public Safety
Travel

Component: Alaska State Trooper Detachments (2325)

Line Number	Line Name		FY2021 Actuals	FY2022 Management Plan	FY2023 Governor
2000	Travel		2,843.6	2,045.7	2,440.6
Object Class	Servicing Agency	Explanation	FY2021 Actuals	FY2022 Management Plan	FY2023 Governor
2000 Travel Detail Totals			2,843.6	2,045.7	2,440.6
2000	In-State Employee Travel	In-state travel for routine patrol, post visits, training courses for officers, remote area patrol, investigations, special field assignments, transportation for witness appearances, and expert testimony in court.	1,208.6	900.0	1,200.0
2001	In-State Non-Employee Travel	In-state non-employee travel for routine patrol, post visits, training courses for officers, remote area patrol, investigations, special field assignments, transportation for witness appearances, and expert testimony in court.	137.3	95.0	95.9
2002	Out of State Employee Travel	Out-of-state travel primarily for training courses, conferences, and seminars for law enforcement officers. Specific events include polygraph use training, FBI National Academy, Southern Police Institute, homicide school, intoximeter instruction, radar instruction, International Chiefs of Police conference, and other similar law enforcement seminars. Non-employee travel includes transportation costs for witness appearances, expert testimony, and trainers' travel.	71.1	50.7	50.7
2003	Out of State Non-Employee Travel	Non-employee travel outside of the	32.5	0.0	0.0

Line Item Detail (1676)
Department of Public Safety
Travel

Component: Alaska State Trooper Detachments (2325)

Object Class	Servicing Agency	Explanation	FY2021 Actuals	FY2022 Management Plan	FY2023 Governor
2000 Travel Detail Totals			2,843.6	2,045.7	2,440.6
2005	Moving Costs	state Moving costs for the entire division of Alaska State Troopers are budgeted in this component. This includes shipment of household goods, per diem, airfare, and temporary lodging costs for transfers of commissioned officers, new recruits and their families.	1,394.1	1,000.0	1,094.0

Line Item Detail (1676)
Department of Public Safety
Services

Component: Alaska State Trooper Detachments (2325)

Line Number	Line Name		FY2021 Actuals	FY2022 Management Plan	FY2023 Governor
3000	Services		16,566.0	10,321.8	7,383.2
Object Class	Servicing Agency	Explanation	FY2021 Actuals	FY2022 Management Plan	FY2023 Governor
3000 Services Detail Totals			16,566.0	10,321.8	7,383.2
3000	Education Services	Registration/tuition for employee development seminars, required law enforcement training, rifle range fees to meet yearly qualifications, and membership in law enforcement organizations.	117.8	100.0	100.0
3001	Financial Services	Interest income, penalties and fines.	62.6	60.0	60.0
3002	Legal and Judicial Services	Transcription services and case costs.	5.5	5.0	5.0
3003	Information Technology	Contracts with information technology firms to assist in data collection/reporting and software maintenance. Consulting services and software licenses for technology projects. Microsoft Exchange & ARMS Maintenance Agreement.	214.8	200.0	150.0
3004	Telecommunications	Long distance, local, cellular, basic equipment purchases, and satellite phones.	578.9	500.0	425.0
3005	Health Services	Medical services for employees (physicals/fit for duty exams) and non-employees (while in custody). Medical costs including sexual assault exams; emergency room care; psychological evaluations and drug screening for trooper and court service officer recruits; and biannual fitness-for-duty physicals for law	601.1	600.0	475.0

Line Item Detail (1676)
Department of Public Safety
Services

Component: Alaska State Trooper Detachments (2325)

Object Class	Servicing Agency	Explanation	FY2021 Actuals	FY2022 Management Plan	FY2023 Governor
3000 Services Detail Totals			16,566.0	10,321.8	7,383.2
		enforcement per unit contracts.			
3006	Delivery Services	Postage, freight, and courier service.	89.7	80.0	80.0
3007	Advertising and Promotions	Advertising for recruitment job fair newspaper ads. Promotional items for recruitment efforts and employee recognition.	129.6	100.0	100.0
3008	Utilities	Utility costs for trooper posts, storage, and offices including natural gas, heating oil, electricity, water and sewer, and waste disposal. Including other disposal and shredding services.	326.8	325.0	325.0
3009	Structure/Infrastructure/Land	Janitorial services, snow removal, lawn care, rentals and leases for copiers, office equipment, driving under the influence-related (DUI) towing services, DUI storage lots, evidence storage, and room rentals for training officers.	256.3	250.0	250.0
3010	Equipment/Machinery	Repair and maintenance of law enforcement equipment, marine equipment, snow machines and four-wheelers, computers and copiers, office and phone, radio and law enforcement equipment. Rental and leases for office equipment, law enforcement equipment, aircraft, and vehicles.	148.8	148.0	148.0
3011	Other Services	Contracts for special services, such as dispatch, prisoner transport, guard hires, clerical support with local police departments. Also includes printing, copier services, honorariums for presenters/trainers, interpreter services, K9 units, and	3,536.8	2,016.4	1,356.0

Line Item Detail (1676)
Department of Public Safety
Services

Component: Alaska State Trooper Detachments (2325)

Object Class	Servicing Agency	Explanation	FY2021 Actuals	FY2022 Management Plan	FY2023 Governor
3000 Services Detail Totals			16,566.0	10,321.8	7,383.2
		commissioned sales for the State Travel Office.			
3017	Inter-Agency Information Technology Non-Telecommunications	Admin - Department-wide Non-telecommunication (mainframe, computer support, sponsored agencies, and VPN).	1,935.0	1,566.7	1,266.7
3017	Inter-Agency Information Technology Non-Telecommunications	PubSaf - Information Systems (3199) Non-telecommunications (LAN/WAN & APSIN).	147.5	157.7	157.4
3018	Inter-Agency Information Technology Telecommunications	Admin - Department-wide Telecommunications (EPR & Basic Phone).	203.0	78.5	78.5
3018	Inter-Agency Information Technology Telecommunications	Courts - Department-wide RSA with Alaska Court Systems (ACS) for recurring connection costs for the Video Arraignment system	0.0	19.6	19.6
3018	Inter-Agency Information Technology Telecommunications	Trans - Department-wide RSA with DOTPF for two-way radio system repairs and maintenance.	0.0	74.0	74.0
3020	Inter-Agency Building Maintenance	Miscoded expenses.	9.8	0.0	0.0
3020	Inter-Agency Building Maintenance	Trans - Department-wide DPS Tudor Complex building and yard maintenance. RSAs with ADOTPF for maintenance of state-owned facilities/buildings (ADOTPF's Central, Northern, and Southeast Regions).	308.6	300.0	300.0
3021	Inter-Agency Mail	Admin - Department-wide Central mail service (I/A transfer to DOA, Shared Services).	21.1	8.2	8.2
3021	Inter-Agency Mail	PubSaf - AST Detachments (2325) DPS headquarters mail room services.	0.0	12.9	12.9
3022	Inter-Agency Human Resources	Admin - Department-wide HR Personnel support.	255.0	200.0	200.0
3023	Inter-Agency Building Leases	Admin - Department-wide Lease costs for AST facilities and lease administration costs charged by DOA.	829.1	412.7	412.7
3023	Inter-Agency Building Leases	Courts - Department-wide Leases with other state agencies (Nenana Courts, Dimond Court Lease, Lease Administration).	0.0	39.8	39.8

Line Item Detail (1676)
Department of Public Safety
Services

Component: Alaska State Trooper Detachments (2325)

Object Class	Servicing Agency	Explanation	FY2021 Actuals	FY2022 Management Plan	FY2023 Governor
3000 Services Detail Totals			16,566.0	10,321.8	7,383.2
3023	Inter-Agency Building Leases	M&VA - Department-wide	0.0	82.3	82.3
		RSAs with DMVA, Army Guard Facilities Maintenance, for lease costs, utilities, and maintenance services for the Nome and Kotzebue Armories, Emmonak and Selawik Posts, and for Nenana sub lease.			
3023	Inter-Agency Building Leases	Trans - Department-wide	15.7	15.0	15.0
		Reimbursement to DOTPF for the costs of airport leases and tie-downs.			
3024	Inter-Agency Legal	Law - Department-wide	122.1	120.0	120.0
		Department of Law legal services (I/A transfer to DOL).			
3026	Inter-Agency Insurance	Admin - Department-wide	128.7	130.0	112.0
		Risk management for property and overhead insurance.			
3027	Inter-Agency Financial	Admin - Department-wide	47.8	50.0	50.0
		State accounting and payroll system costs (I/A transfer to DOA, Finance). IRIS HRM/ ALDER/ IRIS financial support.			
3028	Inter-Agency Americans with Disabilities Act Compliance	Admin - Department-wide	3.8	3.5	3.5
		Americans with Disabilities Act funding (I/A transfer to DOA, Personnel).			
3029	Inter-Agency Education/Training	PubSaf - Training Academy (524)	316.4	15.0	15.0
		RSA with DPS Academy for Alaska Law Enforcement Training.			
3029	Inter-Agency Education/Training	Univ - Department-wide	0.0	100.0	15.0
		RSA with the University of Alaska Southeast for the Alaska Law Enforcement Training (ALET) academy.			
3036	Inter-Agency Safety	Trans - Department-wide	12.5	12.5	12.5
		Radar Recertification			
3037	State Equipment Fleet	Trans - Department-wide	5,506.4	1,905.0	664.1
		State Equipment Fleet vehicle leasing and maintenance.			
3038	Inter-Agency Management/Consulting	Admin - Department-wide	634.8	634.0	250.0
		Shared Services of Alaska travel and account payables support.			
3038	Inter-Agency	PubSaf - Administrative Services (525)	0.0	0.0	0.0
		DPS Administrative Services			

Line Item Detail (1676)
Department of Public Safety
Services

Component: Alaska State Trooper Detachments (2325)

Object Class	Servicing Agency	Explanation	FY2021 Actuals	FY2022 Management Plan	FY2023 Governor	
3000 Services Detail Totals			16,566.0	10,321.8	7,383.2	
		including grants cost allocations.				
3038	Inter-Agency Management/Consulting	PubSaf - Commissioner's Office (523)	DPS Commissioner's Office cost allocation. DPS Office of Professional Services costs now included in Commissioner's Office cost allocation.	0.0	0.0	0.0

Line Item Detail (1676)
Department of Public Safety
Commodities

Component: Alaska State Trooper Detachments (2325)

Line Number	Line Name		FY2021 Actuals	FY2022 Management Plan	FY2023 Governor
4000	Commodities		965.9	952.7	1,160.2
Object Class	Servicing Agency	Explanation	FY2021 Actuals	FY2022 Management Plan	FY2023 Governor
4000 Commodities Detail Totals			965.9	952.7	1,160.2
4000	Business	Business, office, photographic, computer supplies and educational subscriptions for law enforcement manuals.	287.4	295.7	274.3
4001	Agricultural	Soil and fertilizer.	0.2	0.0	0.0
4002	Household/Institutional	Clothing, uniforms, cleaning, food and non-food supplies. Such as uniforms for commissioned officers, accident victim blankets, evidence bags, body bags, latex examination gloves, law enforcement forms, and drug testing kits.	222.7	223.0	223.0
4003	Scientific and Medical	Laboratory, scientific, and medical supplies.	23.6	25.0	25.0
4004	Safety	Law enforcement supplies, communications, ammunition, gun cleaning supplies, protective vests, first aid supplies, road flares, and other safety supplies.	282.4	285.0	513.9
4005	Building Materials	Building materials.	5.3	5.0	5.0
4006	Signs and Markers	One-time sign purchase.	1.1	1.0	1.0
4011	Electrical	Minor electrical purchases.	12.5	3.5	3.5
4012	Plumbing	Minor plumbing purchases.	0.3	1.0	1.0
4013	Lube Oils/Grease/Solvents	Lube oils, grease, solvents for law enforcement equipment such as snowmachines.	1.1	1.5	1.5

Line Item Detail (1676)
Department of Public Safety
Commodities

Component: Alaska State Trooper Detachments (2325)

Object Class	Servicing Agency	Explanation	FY2021 Actuals	FY2022 Management Plan	FY2023 Governor
4000 Commodities Detail Totals			965.9	952.7	1,160.2
4014	Bottled Gas		0.2	0.0	0.0
4015	Parts and Supplies	Parts and supplies used to repair and maintain equipment. Minor maintenance and repair supplies for state facilities including signs, plumbing and electrical supplies, janitorial supplies, and paint. Fuel for airplanes, helicopters, boats, snow machines, and all-terrain vehicles.	95.6	95.0	95.0
4016	Paint/Preservatives	Paint and preservatives.	0.8	1.0	1.0
4017	Sand	Sanding of walkways and/or parking areas for safety.	0.1	0.1	0.1
4018	Surface Chemicals	Deicing chemicals for walkways and/or parking areas for safety.	0.2	0.4	0.4
4019	Small Tools/Minor Equipment	Small Tools and minor equipment supplies used to repair and maintain equipment. Minor maintenance and repair supplies for state facilities including signs, plumbing and electrical supplies, janitorial supplies, and paint.	2.2	2.5	2.5
4020	Equipment Fuel	Fuel for equipment, airplanes, helicopters, boats, snow machines, and all-terrain vehicles.	13.1	13.0	13.0
4022	Commodity Transfer	One-time transfer of earthquake expenses for RSA reimbursement.	17.1	0.0	0.0

Line Item Detail (1676)
Department of Public Safety
Capital Outlay

Component: Alaska State Trooper Detachments (2325)

Line Number	Line Name		FY2021 Actuals	FY2022 Management Plan	FY2023 Governor
5000	Capital Outlay		1,197.7	48.7	680.2
Object Class	Servicing Agency	Explanation	FY2021 Actuals	FY2022 Management Plan	FY2023 Governor
5000 Capital Outlay Detail Totals			1,197.7	48.7	680.2
5004	Equipment	Rounded down to \$1,197.6, so object code 5000 total is correct. Law enforcement safety equipment such as diving equipment, ammunition, tasers, K9 equipment, transportation equipment, communication and IT equipment, and undercover surveillance equipment used in support of law enforcement activities. Actuals expenses are greater due to one-time year-end purchases.	1,197.7	48.7	680.2

Revenue Detail (1681)
Department of Public Safety

Component: Alaska State Trooper Detachments (2325)

Revenue Type (OMB Fund Code) Revenue Source	Component	Comment	FY2021 Actuals	FY2022 Management Plan	FY2023 Governor
5005 GF/Prgm (1005 GF/Prgm)			6.8	100.0	100.0
5108 Program Receipts General Government - Charges for Services		Collection of fees for Alaska Records Management System and Fines, Forfeitures, Judgments and settlements, and collection of public records fees.	6.8	100.0	100.0
5007 I/A Rcpts (1007 I/A Rcpts)			2,346.5	416.1	561.7
5301 Inter-Agency Receipts		Unallocated IA Receipt authority. Historically DPS AST Detachments receives request for services from other agencies for dispatch services, patrols, overtime enforcement activities, and misc. training, and other services.	2,296.3	141.6	291.6
5301 Inter-Agency Receipts	Admin - Department-wide	Reimbursable service agreement with Department of Administration	43.1	4.4	0.0
5301 Inter-Agency Receipts	NatRes - Department-wide	Interagency agreement for overtime enforcement of the Knik River Public Use Area.	0.0	125.0	125.0
5301 Inter-Agency Receipts	PubSaf - Administrative Services (525)	Interagency Authority for AST Detachment Services (DPS Mailroom).	0.0	1.0	1.0
5301 Inter-Agency Receipts	PubSaf - AK Fire Standards Council (2428)	Interagency Authority for AST Detachment Services (DPS Mailroom).	0.0	1.6	1.6
5301 Inter-Agency Receipts	PubSaf - AK W-life Troopers Aircraft Sect (492)	Interagency Authority for AST Detachment Services (DPS Mailroom).	0.0	3.5	3.5
5301 Inter-Agency Receipts	PubSaf - AK W-life Troopers Marine Enforc (493)	Interagency Authority for AST Detachment Services (DPS Mailroom).	0.0	0.1	0.1
5301 Inter-Agency Receipts	PubSaf - Alaska Bureau of Highway Patrol (3073)	Interagency Authority for AST Detachment Services (DPS Mailroom).	0.0	0.3	0.3
5301 Inter-Agency Receipts	PubSaf - Alaska Bureau of	Interagency Authority for AST	0.0	12.6	12.6

Revenue Detail (1681)
Department of Public Safety

Component: Alaska State Trooper Detachments (2325)

Revenue Type (OMB Fund Code) Revenue Source	Component	Comment	FY2021 Actuals	FY2022 Management Plan	FY2023 Governor
	Investigation (2744)	Detachment Services (DPS Mailroom).			
5301 Inter-Agency Receipts	PubSaf - Alaska Wildlife Troopers (2746)	Interagency Authority for AST Detachment Services (DPS Mailroom).	0.0	2.3	2.3
5301 Inter-Agency Receipts	PubSaf - AST Detachments (2325)	Interagency Authority for AST Detachment Services (DPS Mailroom).	0.0	7.8	7.8
5301 Inter-Agency Receipts	PubSaf - Commissioner's Office (523)	Interagency Authority for AST Detachment Services (DPS Mailroom).	0.0	0.3	0.3
5301 Inter-Agency Receipts	PubSaf - Crim Just Information Systems (3200)	Interagency Authority for AST Detachment Services (DPS Mailroom).	0.0	52.0	52.0
5301 Inter-Agency Receipts	PubSaf - Fire and Life Safety (3051)	Interagency Authority for AST Detachment Services (DPS Mailroom).	0.0	4.4	4.4
5301 Inter-Agency Receipts	PubSaf - Information Systems (3199)	Interagency Authority for AST Detachment Services (DPS Mailroom).	0.0	47.9	47.9
5301 Inter-Agency Receipts	PubSaf - Special Projects (1001)	Interagency Authority for AST Detachment Services (DPS Mailroom).	0.0	1.5	1.5
5301 Inter-Agency Receipts	PubSaf - SW Drug and Alcohol Enforcement (3052)	Interagency Authority for AST Detachment Services (DPS Mailroom).	0.0	0.5	0.5
5301 Inter-Agency Receipts	PubSaf - Village Public Safety Officer Pg (3047)	Interagency Authority for AST Detachment Services (DPS Mailroom).	0.0	2.1	2.1
5301 Inter-Agency Receipts	Rev - Department-wide	DPS Inter-agency RSA for ARMS Case Management system.	7.1	7.2	7.2
5061 CIP Rcpts (1061 CIP Rcpts)			0.0	0.0	0.0
5351 Capital Improvement Project Inter-Agency		Unallocated CIP Receipt Authority.	0.0	0.0	0.0
5351 Capital Improvement Project Inter-Agency	Trans - Department-wide	CIP RSA for 511 Management Center (511 MC) Reporting System	0.0	0.0	0.0

Revenue Detail (1681)
Department of Public Safety

Component: Alaska State Trooper Detachments (2325)

Revenue Type (OMB Fund Code) Revenue Source	Component	Comment	FY2021 Actuals	FY2022 Management Plan	FY2023 Governor
		with DOTPF. RSA was discontinued in October 2019.			
6004 Gen Fund (1004 Gen Fund)			68.7	0.0	0.0
6003 General Fund Pblc Prtctn - Miscellaneous Fines/Forfeitures		DUI forfeiture	42.9	0.0	0.0
6004 General Fund Public Protection - Judgement Settlemnt		Judgement Settlement.	14.0	0.0	0.0
6044 General Fund - Jury & Worker's Compensation Recovery		Jury and Worker's Compensation Recovery.	0.2	0.0	0.0
6046 General Fund - Prior Year Reimbursement Recovery		Prior Year Reimbursement Recovery.	11.6	0.0	0.0
6092 MHTAAR (1092 MHTAAR)			0.0	80.0	80.0
6691 Mental Health Trust Auth Auth Rec - Miscellaneous		Mental health trust revenue for Crisis Intervention Training.	0.0	80.0	80.0

Inter-Agency Services (1682)
Department of Public Safety

Component: Alaska State Trooper Detachments (2325)

	FY2021 Actuals	FY2022 Management Plan	FY2023 Governor
Component Totals	10,487.5	5,937.4	3,909.2
With Department of Administration	4,058.3	3,083.6	2,381.6
With Department of Public Safety	463.9	185.6	185.3
With Judiciary	0.0	59.4	59.4
With Department of Transportation/Public Facilities	5,843.2	2,306.5	1,065.6
With Department of Military and Veterans Affairs	0.0	82.3	82.3
With Department of Law	122.1	120.0	120.0
With University of Alaska	0.0	100.0	15.0

Object Class	Servicing Agency	Explanation	FY2021 Actuals	FY2022 Management Plan	FY2023 Governor
3017	Inter-Agency Information Technology Non-Telecommunications	Admin - Department-wide Non-telecommunication (mainframe, computer support, sponsored agencies, and VPN).	1,935.0	1,566.7	1,266.7
3017	Inter-Agency Information Technology Non-Telecommunications	PubSaf - Information Systems (3199) Non-telecommunications (LAN/WAN & APSIN).	147.5	157.7	157.4
3018	Inter-Agency Information Technology Telecommunications	Admin - Department-wide Telecommunications (EPR & Basic Phone).	203.0	78.5	78.5
3018	Inter-Agency Information Technology Telecommunications	Courts - Department-wide RSA with Alaska Court Systems (ACS) for recurring connection costs for the Video Arraignment system	0.0	19.6	19.6
3018	Inter-Agency Information Technology Telecommunications	Trans - Department-wide RSA with DOTPF for two-way radio system repairs and maintenance.	0.0	74.0	74.0
3020	Inter-Agency Building Maintenance	Trans - Department-wide DPS Tudor Complex building and yard maintenance. RSAs with ADOTPF for maintenance of state-owned facilities/buildings (ADOTPF's Central, Northern, and Southeast Regions).	308.6	300.0	300.0
3021	Inter-Agency Mail	Admin - Department-wide Central mail service (I/A transfer to DOA, Shared Services).	21.1	8.2	8.2
3021	Inter-Agency Mail	PubSaf - AST Detachments (2325) DPS headquarters mail room services.	0.0	12.9	12.9

Inter-Agency Services (1682)
Department of Public Safety

Component: Alaska State Trooper Detachments (2325)

Object Class		Servicing Agency	Explanation	FY2021 Actuals	FY2022 Management Plan	FY2023 Governor
3022	Inter-Agency Human Resources	Admin - Department-wide	HR Personnel support.	255.0	200.0	200.0
3023	Inter-Agency Building Leases	Admin - Department-wide	Lease costs for AST facilities and lease administration costs charged by DOA.	829.1	412.7	412.7
3023	Inter-Agency Building Leases	Courts - Department-wide	Leases with other state agencies (Nenana Courts, Dimond Court Lease, Lease Administration).	0.0	39.8	39.8
3023	Inter-Agency Building Leases	M&VA - Department-wide	RSAs with DMVA, Army Guard Facilities Maintenance, for lease costs, utilities, and maintenance services for the Nome and Kotzebue Armories, Emmonak and Selawik Posts, and for Nenana sub lease.	0.0	82.3	82.3
3023	Inter-Agency Building Leases	Trans - Department-wide	Reimbursement to DOTPF for the costs of airport leases and tie-downs.	15.7	15.0	15.0
3024	Inter-Agency Legal	Law - Department-wide	Department of Law legal services (I/A transfer to DOL).	122.1	120.0	120.0
3026	Inter-Agency Insurance	Admin - Department-wide	Risk management for property and overhead insurance.	128.7	130.0	112.0
3027	Inter-Agency Financial	Admin - Department-wide	State accounting and payroll system costs (I/A transfer to DOA, Finance). IRIS HRM/ ALDER/ IRIS financial support.	47.8	50.0	50.0
3028	Inter-Agency Americans with Disabilities Act Compliance	Admin - Department-wide	Americans with Disabilities Act funding (I/A transfer to DOA, Personnel).	3.8	3.5	3.5
3029	Inter-Agency Education/Training	PubSaf - Training Academy (524)	RSA with DPS Academy for Alaska Law Enforcement Training.	316.4	15.0	15.0
3029	Inter-Agency Education/Training	Univ - Department-wide	RSA with the University of Alaska Southeast for the Alaska Law Enforcement Training (ALET) academy.	0.0	100.0	15.0
3036	Inter-Agency Safety	Trans - Department-wide	Radar Recertification	12.5	12.5	12.5

Inter-Agency Services (1682)
Department of Public Safety

Component: Alaska State Trooper Detachments (2325)

Object Class	Servicing Agency	Explanation	FY2021 Actuals	FY2022 Management Plan	FY2023 Governor
3037 State Equipment Fleet	Trans - Department-wide	State Equipment Fleet vehicle leasing and maintenance.	5,506.4	1,905.0	664.1
3038 Inter-Agency Management/Consulting	Admin - Department-wide	Shared Services of Alaska travel and account payables support.	634.8	634.0	250.0

Personal Services Expenditure Detail
Department of Public Safety

Scenario: FY2023 Governor (18673)
Component: Alaska State Trooper Detachments (2325)
RDU: Alaska State Troopers (160)

PCN	Job Class Title	Time Status	Retire Code	Barg Unit	Location	Salary Sched	Range / Step	Comp Months	Split / Count	Annual Salaries	COLA	Premium Pay	Annual Benefits	Total Costs	UGF Amount
02-9524	Criminal Justice Technician 1	FT	A	GP	Kotzebue	160	12C / D	12.0		69,349	0	0	46,805	116,154	58,077
12-#170	Criminal Justice Technician 1	FT	A	GG	Juneau	105	12A	12.0		42,062	0	3,235	37,086	82,383	82,383
12-#171	Criminal Justice Technician 1	FT	A	GG	Soldotna	100	12A	12.0		40,053	0	3,081	36,212	79,346	79,346
12-#172	Public Safety Technician 2	FT	A	GG	Juneau	105	11A	12.0		39,683	0	3,052	36,051	78,786	78,786
12-#173	Public Safety Technician 2	FT	A	GG	Soldotna	100	11A	12.0		37,791	0	2,907	35,227	75,925	75,925
12-#174	Criminal Justice Technician 1	FT	A	GG	Anchorage	100	12A	12.0		40,053	0	3,081	36,212	79,346	79,346
12-#175	Criminal Justice Technician 2	FT	A	GG	Anchorage	100	14A / B	12.0		47,015	0	3,616	39,241	89,872	89,872
12-#176	Sergeant DPS	FT	P	AA	Anchorage	100	79C / D	12.0		102,513	4,854	12,730	65,247	185,344	185,344
12-#177	State Trooper	FT	P	AA	Tok	115	77C / D	12.0		101,743	4,818	12,638	64,899	184,098	184,098
12-#178	Forensic Technician 2	FT	A	GG	Bethel	150	15A	12.0		72,989	0	5,614	50,545	129,148	129,148
12-#179	Training Specialist 1	FT	A	GG	Anchorage	100	16A	12.0		52,221	0	4,017	41,507	97,745	97,745
12-#180	State Trooper	FT	P	AA	Palmer	100	77C / D	12.0		88,473	4,194	11,089	58,910	162,666	162,666
12-#181	State Trooper	FT	P	AA	Palmer	100	77C / D	12.0		88,473	4,194	11,089	58,910	162,666	162,666
12-#182	State Trooper	FT	P	AA	Palmer	100	77C / D	12.0		88,473	3,759	756	54,735	147,723	147,723
12-#183	State Trooper	FT	P	AA	Palmer	100	77C / D	12.0		88,473	4,194	11,089	58,910	162,666	162,666
12-#184	State Trooper	FT	P	AA	Palmer	100	77C / D	12.0		88,473	4,194	11,089	58,910	162,666	162,666
12-#185	State Trooper	FT	P	AA	Wasilla	100	77C / D	12.0		88,473	4,194	11,089	58,910	162,666	162,666
12-#186	State Trooper	FT	P	AA	Wasilla	100	77C / D	12.0		88,473	4,194	11,089	58,910	162,666	162,666
12-#187	State Trooper	FT	P	AA	Wasilla	100	77C / D	12.0		88,473	4,194	11,089	58,910	162,666	162,666
12-#188	State Trooper	FT	P	AA	Wasilla	100	77C / D	12.0		88,473	4,194	11,089	58,910	162,666	162,666
12-#189	State Trooper	FT	P	AA	Wasilla	100	77C / D	12.0		88,473	4,194	11,089	58,910	162,666	162,666
12-#190	Program Coordinator 1	FT	A	SS	Anchorage	100	18A	12.0		65,770	923	0	46,959	113,652	113,652
12-#191	Victim/Witness Paralegal 1	FT	A	GG	Anchorage	100	14A	12.0		45,494	0	3,499	38,579	87,572	87,572
12-#192	Victim/Witness Paralegal 1	FT	A	GG	Anchorage	100	14A	12.0		45,494	0	3,499	38,579	87,572	87,572
12-#193	Victim/Witness Paralegal 1	FT	A	GG	Anchorage	100	14A	12.0		45,494	0	3,499	38,579	87,572	87,572
12-#194	Victim/Witness Paralegal 1	FT	A	GG	Anchorage	100	14A	12.0		45,494	0	3,499	38,579	87,572	87,572
12-?102	Victim/Witness Paralegal 1	FT	A	GP	Bethel	150	14A / B	12.0		71,234	0	0	47,567	118,801	118,801
12-0099	Sergeant DPS	FT	P	AA	Anchorage	100	79K / L	12.0		124,806	5,895	15,148	75,233	221,082	221,082
12-1001	Lieutenant DPS	FT	P	S2	Anchorage	99	24R	12.0		178,651	7,227	756	90,875	277,509	277,509
12-1005	Criminal Justice Technician 2	FT	A	GP	Ketchikan	99	14M / N	12.0		70,106	0	6,230	49,629	125,965	125,965
12-1013	Captain DPS	FT	P	S2	Anchorage	99	25N / O	12.0		174,127	7,208	4,800	90,710	276,845	276,845
12-1014	Captain DPS	FT	P	S2	Fairbanks	99	25T	12.0		210,954	8,691	4,800	103,334	327,779	327,779
12-1016	Information System	FT	A	GP	Anchorage	100	18C / D	12.0		65,878	0	0	45,403	111,281	111,281

Note: If a position is split, an asterisk (*) will appear in the Split/Count column. If the split position is also counted in the component, two asterisks (**) will appear in this column. [No valid job title] appearing in the Job Class Title indicates that the PCN has an invalid class code or invalid range for the class code effective date of this scenario.

Personal Services Expenditure Detail
Department of Public Safety

Scenario: FY2023 Governor (18673)
Component: Alaska State Trooper Detachments (2325)
RDU: Alaska State Troopers (160)

PCN	Job Class Title	Time Status	Retire Code	Barg Unit	Location	Salary Sched	Range / Step	Comp Months	Split / Count	Annual Salaries	COLA	Premium Pay	Annual Benefits	Total Costs	UGF Amount
	Coordinator														
12-1019	State Trooper	FT	P	AA	Nome	99	77D / E	12.0		128,422	6,162	24,547	80,108	239,239	239,239
12-1024	Captain DPS	FT	P	S2	Soldotna	99	25R	12.0		192,109	7,932	4,800	96,874	301,715	301,715
12-1027	Major DPS	FT	P	S2	Anchorage	99	26R	12.0		199,018	8,048	756	97,857	305,679	305,679
12-1029	State Trooper	FT	P	AA	Palmer	100	77F	12.0		96,990	5,010	21,955	66,743	190,698	190,698
12-1031	State Trooper	FT	P	AA	Kotzebue	99	77N / O	12.0		195,943	9,473	39,221	108,284	352,921	352,921
12-1034	State Trooper	FT	P	AA	Ketchikan	1EE	77M / N	12.0		122,297	5,926	24,814	78,100	231,137	231,137
12-1037	Sergeant DPS	FT	P	AA	Saint Marys	99	79O / P	12.0		191,754	9,147	35,304	105,505	341,710	341,710
12-1039	Sergeant DPS	FT	P	AA	Anchorage	99	79O	12.0		145,413	6,702	20,964	84,704	257,783	257,783
12-1040	State Trooper	FT	P	AA	Juneau	105	77R	12.0		141,835	6,705	24,604	84,725	257,869	257,869
12-1041	State Trooper	FT	P	AA	Tok	115	77F	12.0		111,530	5,699	23,752	73,345	214,326	214,326
12-1045	Sergeant DPS	FT	P	AA	Tok	115	79J / K	12.0		138,881	6,555	23,834	83,449	252,719	252,719
12-1048	Sergeant DPS	FT	P	AA	Wasilla	99	79J / K	12.0		125,474	5,975	22,846	78,514	232,809	232,809
12-1049	State Trooper	FT	P	AA	Wasilla	100	77B / C	12.0		86,500	4,676	24,502	63,533	179,211	179,211
12-1055	Office Assistant 2	FT	A	GP	Soldotna	100	10B / C	12.0		37,859	0	0	34,080	71,939	71,939
12-1057	Lieutenant DPS	FT	P	S2	Palmer	C00	24M	12.0		130,936	5,718	4,800	75,232	216,686	216,686
12-1061	Sergeant DPS	FT	F	AA	Ketchikan	99	79F	12.0		124,409	5,924	21,618	77,687	229,638	229,638
12-1062	Captain DPS	FT	P	S2	Anchorage	99	25P	12.0		180,211	7,402	3,532	92,361	283,506	283,506
12-1064	Sergeant DPS	FT	P	AA	Palmer	99	79F / J	12.0		120,196	5,546	11,463	71,881	209,086	209,086
12-1066	Sergeant DPS	FT	P	AA	Anchorage	100	79J	12.0		116,584	5,369	10,880	70,185	203,018	203,018
12-1067	State Trooper	FT	P	AA	Soldotna	99	77C / D	12.0		94,239	4,723	17,894	63,990	180,846	180,846
12-1069	State Trooper	FT	P	AA	Wasilla	99	77F / J	12.0		103,399	5,108	17,854	67,676	194,037	194,037
12-1070	State Trooper	FT	P	AA	Palmer	100	77C / D	12.0		89,888	4,746	22,789	64,210	181,633	181,633
12-1074	Captain DPS	FT	P	S2	Palmer	99	25Q	12.0		190,549	7,925	6,186	96,815	301,475	301,475
12-1079	Administrative Assistant 2	FT	A	GP	Fairbanks	103	14G / J	12.0		58,309	0	0	42,344	100,653	100,653
12-1086	Sergeant DPS	FT	P	AA	Dillingham	99	79L / M	12.0		181,151	8,427	28,044	99,382	317,004	317,004
12-1088	State Trooper	FT	P	AA	Soldotna	99	77F / J	12.0		103,649	5,063	16,541	67,246	192,499	192,499
12-1091	State Trooper	FT	P	AA	Ketchikan	99	77N / O	12.0		134,888	6,111	16,822	79,676	237,497	237,497
12-1093	State Trooper	FT	P	AA	Wasilla	99	77M	12.0		116,584	5,747	19,841	73,807	215,979	215,979
12-1094	State Trooper	FT	P	AA	Palmer	100	77F / J	12.0		100,388	5,272	24,769	69,253	199,682	199,682
12-1098	State Trooper	FT	P	AA	Nome	137	77D / E	12.0		125,026	5,989	23,644	78,634	233,293	233,293
12-1100	Sergeant DPS	FT	P	AA	Nome	99	79O	12.0		199,222	9,175	28,529	105,743	342,669	342,669
12-1101	State Trooper	FT	P	AA	Bethel	99	77O	12.0		188,240	8,814	30,567	102,677	330,298	330,298
12-1106	Office Assistant 2	FT	A	GP	Fairbanks	103	10A / B	12.0		38,064	0	0	34,163	72,227	72,227
12-1109	Administrative Assistant 2	FT	A	GP	Anchorage	100	14C / D	12.0		49,658	0	0	38,848	88,506	88,506
12-1111	Administrative Assistant 2	FT	A	GP	Ketchikan	100	14J / K	12.0		60,543	0	0	43,247	103,790	103,790
12-1113	Lieutenant DPS	FT	P	S2	Soldotna	99	24N	12.0		157,226	6,527	4,800	84,917	253,470	253,470
12-1115	Lieutenant DPS	FT	P	S2	Bethel	C50	24C / D	12.0		161,741	6,709	4,800	86,464	259,714	259,714
12-1120	Criminal Justice Technician	FT	A	GP	Bethel	150	12B / C	12.0		64,038	0	0	44,659	108,697	108,697

Note: If a position is split, an asterisk (*) will appear in the Split/Count column. If the split position is also counted in the component, two asterisks (**) will appear in this column. [No valid job title] appearing in the Job Class Title indicates that the PCN has an invalid class code or invalid range for the class code effective date of this scenario.

Personal Services Expenditure Detail
Department of Public Safety

Scenario: FY2023 Governor (18673)
Component: Alaska State Trooper Detachments (2325)
RDU: Alaska State Troopers (160)

PCN	Job Class Title	Time Status	Retire Code	Barg Unit	Location	Salary Sched	Range / Step	Comp Months	Split / Count	Annual Salaries	COLA	Premium Pay	Annual Benefits	Total Costs	UGF Amount
	1														
12-1122	State Trooper	FT	P	AA	Ketchikan	1EE	77O	12.0		130,021	5,919	16,227	77,776	229,943	229,943
12-1123	State Trooper	FT	P	AA	Seward	99	77C / D	12.0		90,106	4,450	15,532	61,366	171,454	171,454
12-1125	State Trooper	FT	P	AA	Soldotna	99	77C / D	12.0		89,752	4,556	18,399	62,381	175,088	175,088
12-1128	Sergeant DPS	FT	P	AA	Fairbanks	103	79N / O	12.0		139,784	6,672	25,836	84,445	256,737	256,737
12-1130	State Trooper	FT	P	AA	King Salmon	150	77K / L	12.0		161,736	7,459	23,434	91,146	283,775	283,775
12-1133	State Trooper	FT	P	AA	Glennallen	1FF	77F	12.0		107,910	5,607	25,205	72,469	211,191	211,191
12-1138	State Trooper	FT	P	AA	Wasilla	100	77J / K	12.0		104,144	5,106	17,062	67,657	193,969	193,969
12-1140	Sergeant DPS	FT	P	AA	Kenai	100	79O / P	12.0		144,536	6,688	21,476	84,579	257,279	257,279
12-1150	Lieutenant DPS	FT	P	S2	Anchorage	99	24P	12.0		167,599	6,945	4,800	88,472	267,816	267,816
12-1155	Office Assistant 3	FT	A	GP	Aniak	150	11G / J	12.0		69,964	0	0	47,054	117,018	117,018
12-1158	Division Director - Px	FT	P	XE	Anchorage	N00	27T	12.0		174,857	0	0	89,171	264,028	264,028
12-1161	Lieutenant DPS	FT	P	S2	Wasilla	99	24M	12.0		162,323	6,788	6,186	87,139	262,436	262,436
12-1164	Administrative Assistant 2	FT	A	SS	Soldotna	500	14A / B	12.0		50,891	715	0	40,946	92,552	92,552
12-1173	Sergeant DPS	FT	P	AA	Fairbanks	103	79M	12.0		134,098	5,928	11,751	77,615	229,392	229,392
12-1177	State Trooper	FT	P	AA	Nome	137	77E / F	12.0		132,470	6,152	20,256	80,024	238,902	238,902
12-1183	State Trooper	FT	P	AA	Seward	100	77J	12.0		100,630	5,206	22,959	68,620	197,415	197,415
12-1185	State Trooper	FT	P	AA	Delta	99	77O	12.0		143,262	7,022	31,048	87,423	268,755	268,755
					Junction										
12-1188	State Trooper	FT	P	AA	Anchor Point	100	77E / F	12.0		94,647	4,707	17,090	63,830	180,274	180,274
12-1191	State Trooper	FT	P	AA	Palmer	99	77C / D	12.0		92,325	4,549	15,660	62,314	174,848	174,848
12-1192	Court Services Officer	FT	P	A2	Nome	537	74M / N	12.0		118,598	3,651	11,413	71,215	204,877	204,877
12-1193	Sergeant DPS	FT	P	AA	Healy	115	79L / M	12.0		148,817	7,084	27,029	87,950	270,880	270,880
12-1196	Office Assistant 3	FT	A	GP	Juneau	105	11K	12.0		51,890	0	0	39,750	91,640	91,640
12-1209	State Trooper	FT	P	AA	Aniak	99	77E / F	12.0		124,233	5,562	7,800	72,032	209,627	209,627
12-1211	State Trooper	FT	P	AA	Fairbanks	103	77F	12.0		99,902	5,127	21,807	67,860	194,696	194,696
12-1212	Sergeant DPS	FT	P	AA	Fairbanks	103	79F / J	12.0		118,557	5,776	18,570	74,090	216,993	216,993
12-1213	State Trooper	FT	P	AA	Fairbanks	103	77D / E	12.0		96,023	5,112	25,340	67,720	194,195	194,195
12-1215	State Trooper	FT	P	AA	Wasilla	99	77O	12.0		131,761	6,488	29,297	82,881	250,427	250,427
12-1218	Lieutenant DPS	FT	P	S2	Anchorage	99	24O	12.0		163,969	6,855	6,186	87,703	264,713	264,713
12-1219	Lieutenant DPS	FT	P	S2	Fairbanks	99	24P / Q	12.0		176,125	7,414	7,918	92,464	283,921	283,921
12-1221	Office Assistant 3	FT	A	GP	Anchor Point	100	11C / D	12.0		40,657	0	0	35,211	75,868	75,868
12-1222	Administrative Assistant 1	FT	A	GP	Fairbanks	103	12A / B	12.0		42,939	0	0	36,133	79,072	79,072
12-1231	State Trooper	FT	P	AA	Fairbanks	103	77E / F	12.0		97,550	5,047	22,273	67,098	191,968	191,968
12-1235	State Trooper	FT	P	AA	Soldotna	99	77M	12.0		122,413	5,916	23,970	77,831	230,130	230,130
12-1236	State Trooper	FT	P	AA	Soldotna	99	77C / D	12.0		92,325	4,597	16,815	62,781	176,518	176,518
12-1237	State Trooper	FT	P	AA	Kodiak	99	77J / K	12.0		117,199	5,740	19,080	73,748	215,767	215,767
12-1238	State Trooper	FT	P	AA	Kodiak	99	77J	12.0		115,045	5,819	23,107	74,505	218,476	218,476
12-1243	Secretary	FT	A	GP	Anchorage	100	11J / K	12.0		48,568	0	0	38,408	86,976	86,976

Note: If a position is split, an asterisk (*) will appear in the Split/Count column. If the split position is also counted in the component, two asterisks (**) will appear in this column. [No valid job title] appearing in the Job Class Title indicates that the PCN has an invalid class code or invalid range for the class code effective date of this scenario.

Personal Services Expenditure Detail
Department of Public Safety

Scenario: FY2023 Governor (18673)
Component: Alaska State Trooper Detachments (2325)
RDU: Alaska State Troopers (160)

PCN	Job Class Title	Time Status	Retire Code	Barg Unit	Location	Salary Sched	Range / Step	Comp Months	Split / Count	Annual Salaries	COLA	Premium Pay	Annual Benefits	Total Costs	UGF Amount
12-1249	Office Assistant 3	FT	A	GP	Seward	100	11E / F	12.0		43,795	0	0	36,479	80,274	80,274
12-1251	State Trooper	FT	P	AA	Anchor Point	100	77C / D	12.0		90,106	4,749	22,643	64,239	181,737	181,737
12-1252	State Trooper	FT	P	AA	Kodiak	99	77J / K	12.0		115,907	5,847	22,889	74,765	219,408	219,408
12-1256	State Trooper	FT	P	AA	Bethel	99	77N	12.0		188,240	8,964	34,280	103,950	335,434	335,434
12-1257	State Trooper	FT	P	AA	Bethel	99	77K / L	12.0		138,735	6,449	21,352	82,548	249,084	249,084
12-1258	Lieutenant DPS	FT	P	S2	Fairbanks	99	24N	12.0		160,763	6,725	6,186	86,604	260,278	260,278
12-1259	State Trooper	FT	P	AA	Delta Junction	99	77N	12.0		138,099	6,628	26,427	84,070	255,224	255,224
12-1261	State Trooper	FT	P	AA	Kotzebue	160	77C / D	12.0		144,165	6,819	25,109	85,697	261,790	261,790
12-1262	State Trooper	FT	P	AA	Wasilla	100	77C / D	12.0		90,106	4,890	25,975	65,586	186,557	186,557
12-1263	State Trooper	FT	P	AA	Wasilla	99	77C / D	12.0		94,354	4,803	19,660	64,750	183,567	183,567
12-1265	State Trooper	FT	P	AA	Palmer	100	77C / D	12.0		90,106	4,711	21,744	63,876	180,437	180,437
12-1268	State Trooper	FT	P	AA	Palmer	100	77C / D	12.0		90,106	4,460	15,773	61,463	171,802	171,802
12-1272	State Trooper	FT	P	AA	Galena	137	77F	12.0		132,870	6,497	28,412	82,957	250,736	250,736
12-1275	State Trooper	FT	P	AA	Fairbanks	103	77C / D	12.0		92,810	4,831	21,874	65,021	184,536	184,536
12-1278	State Trooper	FT	P	AA	Fairbanks	103	77C / D	12.0		91,406	4,598	17,753	62,788	176,545	176,545
12-1279	State Trooper	FT	P	AA	Palmer	99	77N / O	12.0		123,942	5,962	20,246	76,944	227,094	227,094
12-1281	State Trooper	FT	P	AA	Aniak	99	77N / O	12.0		163,953	7,606	24,864	92,396	288,819	288,819
12-1282	State Trooper	FT	P	AA	Cantwell	115	77F	12.0		111,530	5,886	28,209	75,146	220,771	220,771
12-1283	State Trooper	FT	P	AA	Palmer	100	77K	12.0		104,395	5,407	23,977	70,552	204,331	204,331
12-1285	State Trooper	FT	P	AA	Craig	1EE	77D / E	12.0		100,183	5,181	22,824	68,384	196,572	196,572
12-1289	State Trooper	FT	P	AA	Healy	115	77C / D	12.0		103,626	5,213	20,130	68,687	197,656	197,656
12-1299	Criminal Justice Technician 1	FT	A	GP	Anchorage	100	12D / E	12.0		44,979	0	0	36,957	81,936	81,936
12-1303	Sergeant DPS	FT	P	AA	Palmer	99	79F	12.0		117,980	5,965	23,622	75,899	223,466	223,466
12-1331	Criminal Justice Technician 1	FT	A	GP	Anchorage	100	12A / B	12.0		41,691	0	0	35,629	77,320	77,320
12-1332	State Trooper	FT	P	AA	Ketchikan	1EE	77E / F	12.0		103,955	5,041	15,712	67,035	191,743	191,743
12-1334	State Trooper	FT	P	AA	Saint Marys	99	77C / D	12.0		122,328	5,997	20,041	76,209	224,575	224,575
12-1335	State Trooper	FT	P	AA	Fairbanks	103	77D / E	12.0		96,052	4,868	19,525	65,382	185,827	185,827
12-1337	State Trooper	FT	P	AA	Aniak	99	77J	12.0		132,088	6,171	21,110	80,186	239,555	239,555
12-1338	State Trooper	FT	P	AA	Glennallen	1FF	77C / D	12.0		100,235	5,026	19,093	66,898	191,252	191,252
12-1340	State Trooper	FT	P	AA	Soldotna	99	77D / E	12.0		95,790	4,871	19,847	65,406	185,914	185,914
12-1341	State Trooper	FT	P	AA	Kodiak	99	77M	12.0		129,418	6,037	20,446	79,043	234,944	234,944
12-1351	Office Assistant 4	FT	A	SS	Palmer	500	12F	12.0		50,918	715	0	40,957	92,590	92,590
12-1353	Lieutenant DPS	FT	P	S2	Anchorage	99	24J / K	12.0		140,214	6,144	12,312	81,660	240,330	240,330
12-1354	Sergeant DPS	FT	P	AA	Soldotna	99	79L / M	12.0		136,910	6,787	31,565	85,423	260,685	260,685
12-1356	Sergeant DPS	FT	P	AA	Wasilla	99	79E / F	12.0		120,787	5,946	20,363	75,716	222,812	222,812
12-1362	Criminal Justice Technician	FT	A	GP	Fairbanks	103	12M / N	12.0		59,726	0	0	42,917	102,643	102,643

Note: If a position is split, an asterisk (*) will appear in the Split/Count column. If the split position is also counted in the component, two asterisks (**) will appear in this column. [No valid job title] appearing in the Job Class Title indicates that the PCN has an invalid class code or invalid range for the class code effective date of this scenario.

Personal Services Expenditure Detail
Department of Public Safety

Scenario: FY2023 Governor (18673)
Component: Alaska State Trooper Detachments (2325)
RDU: Alaska State Troopers (160)

PCN	Job Class Title	Time Status	Retire Code	Barg Unit	Location	Salary Sched	Range / Step	Comp Months	Split / Count	Annual Salaries	COLA	Premium Pay	Annual Benefits	Total Costs	UGF Amount
	1														
12-1363	Office Assistant 3	FT	A	GP	Delta Junction	100	11K	12.0		49,413	0	0	38,749	88,162	88,162
12-1367	Office Assistant 2	FT	A	GP	Soldotna	100	10C / D	12.0		38,293	0	0	34,256	72,549	72,549
12-1373	State Trooper	FT	P	AA	Glennallen	1FF	77C / D	12.0		100,235	5,355	26,899	70,052	202,541	202,541
12-1374	State Trooper	FT	P	AA	Seward	100	77F	12.0		96,990	4,987	21,410	66,523	189,910	189,910
12-1378	State Trooper	FT	P	AA	Wasilla	99	77K	12.0		107,527	5,625	26,017	72,642	211,811	211,811
12-1380	Criminal Justice Technician	FT	A	GP	Fairbanks	103	12M / N	12.0		59,096	0	0	42,662	101,758	101,758
	1														
12-1383	Sergeant DPS	FT	P	AA	Soldotna	99	79O	12.0		152,683	6,531	9,440	83,246	251,900	251,900
12-1384	Sergeant DPS	FT	P	AA	Saint Marys	99	79N / O	12.0		182,571	8,399	25,918	99,140	316,028	316,028
12-1386	Sergeant DPS	FT	P	AA	Fairbanks	103	79L / M	12.0		130,059	5,681	4,800	73,174	213,714	213,714
12-1388	Sergeant DPS	FT	P	AA	Delta Junction	99	79O	12.0		167,232	8,162	35,376	97,124	307,894	307,894
12-1389	Sergeant DPS	FT	P	AA	Soldotna	100	79K	12.0		120,952	5,929	26,225	78,122	231,228	231,228
12-1391	State Trooper	FT	P	AA	Tok	115	77F / J	12.0		113,000	5,700	22,316	73,358	214,374	214,374
12-1392	State Trooper	FT	P	AA	Unalakleet	99	77O	12.0		158,755	7,541	28,441	91,841	286,578	286,578
12-1394	State Trooper	FT	P	AA	Fairbanks	103	77D / E	12.0		93,996	4,724	18,160	64,000	180,880	180,880
12-1395	State Trooper	FT	P	AA	Palmer	100	77F	12.0		96,990	4,951	20,554	66,177	188,672	188,672
12-1408	Sergeant DPS	FT	P	AA	Wasilla	100	79E / F	12.0		111,922	5,767	24,975	73,997	216,661	216,661
12-1411	State Trooper	FT	P	AA	Cantwell	99	77M / N	12.0		134,685	6,498	26,631	82,969	250,783	250,783
12-1412	State Trooper	FT	P	AA	Fairbanks	103	77D / E	12.0		94,025	4,897	22,220	65,652	186,794	186,794
12-1416	Sergeant DPS	FT	P	AA	Bethel	150	79C / D	12.0		156,603	7,735	35,410	93,492	293,240	293,240
12-1417	State Trooper	FT	P	AA	Fairbanks	103	77O	12.0		124,571	5,950	20,190	77,175	227,886	227,886
12-1418	State Trooper	FT	P	AA	Fairbanks	103	77J	12.0		103,646	5,197	19,723	68,531	197,097	197,097
12-1421	Office Assistant 2	FT	A	GP	Wasilla	100	10C / D	12.0		38,232	0	0	34,231	72,463	72,463
12-1423	Office Assistant 2	FT	A	GP	Anchorage	100	10A / B	12.0		36,953	0	0	33,714	70,667	70,667
12-1431	State Trooper	FT	P	AA	Bethel	99	77O / P	12.0		193,822	8,918	27,567	103,562	333,869	333,869
12-1432	State Trooper	FT	P	AA	Nenana	1DD	77F / J	12.0		101,885	5,359	25,345	70,091	202,680	202,680
12-1437	State Trooper	FT	P	AA	Bethel	150	77F	12.0		145,496	6,752	22,112	85,126	259,486	259,486
12-1443	Criminal Justice Technician	FT	A	GP	Palmer	99	12P	12.0		62,655	0	0	44,100	106,755	106,755
	1														
12-1444	Criminal Justice Technician	FT	A	GP	Soldotna	100	12G	12.0		49,140	0	0	38,639	87,779	87,779
	1														
12-1455	State Trooper	FT	P	AA	Fairbanks	103	77C / D	12.0		92,557	4,773	20,760	64,469	182,559	182,559
12-1456	Sergeant DPS	FT	P	AA	Fairbanks	103	79J / K	12.0		121,202	5,921	24,976	77,748	229,847	229,847
12-1457	Sergeant DPS	FT	P	AA	Fairbanks	103	79F / J	12.0		119,281	5,930	21,505	75,569	222,285	222,285
12-1461	Criminal Justice Technician	FT	A	GP	Anchorage	100	12E / F	12.0		46,648	0	0	37,632	84,280	84,280
	1														

Note: If a position is split, an asterisk (*) will appear in the Split/Count column. If the split position is also counted in the component, two asterisks (**) will appear in this column. [No valid job title] appearing in the Job Class Title indicates that the PCN has an invalid class code or invalid range for the class code effective date of this scenario.

Personal Services Expenditure Detail
Department of Public Safety

Scenario: FY2023 Governor (18673)
Component: Alaska State Trooper Detachments (2325)
RDU: Alaska State Troopers (160)

PCN	Job Class Title	Time Status	Retire Code	Barg Unit	Location	Salary Sched	Range / Step	Comp Months	Split / Count	Annual Salaries	COLA	Premium Pay	Annual Benefits	Total Costs	UGF Amount
12-1462	Criminal Justice Technician 1	FT	A	GP	Palmer	99	12O	12.0		60,361	0	0	43,173	103,534	103,534
12-1469	Accounting Technician 1	FT	A	GP	Anchorage	100	12J / K	12.0		51,572	0	0	39,622	91,194	91,194
12-1471	Office Assistant 2	FT	A	GP	Palmer	100	10D / E	12.0		39,527	0	0	34,754	74,281	74,281
12-1473	Administrative Assistant 1	FT	A	GP	Soldotna	100	12O / P	12.0		60,408	0	0	43,192	103,600	103,600
12-1476	State Trooper	FT	P	AA	Anchor Point	100	77K	12.0		104,395	5,358	22,810	70,081	202,644	202,644
12-1477	State Trooper	FT	P	AA	Fairbanks	103	77B / C	12.0		89,091	4,606	20,253	62,863	176,813	176,813
12-1478	State Trooper	FT	P	AA	Fairbanks	99	77L	12.0		115,731	5,759	20,984	73,924	216,398	216,398
12-1479	State Trooper	FT	P	AA	Fairbanks	99	77J / K	12.0		108,084	5,691	27,013	73,270	214,058	214,058
12-1480	State Trooper	FT	P	AA	Dillingham	137	77E / F	12.0		129,707	6,120	22,211	79,747	237,785	237,785
12-1482	State Trooper	FT	P	AA	Fairbanks	103	77E / F	12.0		97,550	5,021	21,647	66,845	191,063	191,063
12-1483	State Trooper	FT	P	AA	Fairbanks	103	77D / E	12.0		94,025	4,738	18,448	64,128	181,339	181,339
12-1484	State Trooper	FT	P	AA	Nome	137	77C / D	12.0		123,448	5,971	20,355	76,788	226,562	226,562
12-1486	State Trooper	FT	P	AA	Wasilla	100	77E / F	12.0		94,706	4,782	18,810	64,549	182,847	182,847
12-1487	Office Assistant 2	FT	A	GP	Fairbanks	103	10A / B	12.0		38,064	0	0	34,163	72,227	72,227
12-1488	Criminal Justice Technician 2	FT	A	GP	Ketchikan	99	14G / J	12.0		51,389	0	6,782	42,288	100,459	100,459
12-1489	Office Assistant 3	FT	A	GP	Ketchikan	100	11A / B	12.0		39,215	0	0	34,628	73,843	73,843
12-1495	Sergeant DPS	FT	P	AA	Seward	100	79J / K	12.0		117,312	5,928	23,407	75,542	222,189	222,189
12-1499	State Trooper	FT	P	AA	Anchorage	100	77J / K	12.0		101,885	4,998	16,774	66,627	190,284	190,284
12-1509	Office Assistant 2	FT	A	GP	Fairbanks	103	10G	12.0		44,343	0	0	36,700	81,043	81,043
12-1511	Office Assistant 2	FT	A	GP	Fairbanks	103	10G / J	12.0		44,577	0	0	36,795	81,372	81,372
12-1512	Criminal Justice Technician 1	FT	A	GP	Nome	137	12F / G	12.0		66,183	0	0	45,526	111,709	111,709
12-1514	Administrative Assistant 2	FT	A	SS	Palmer	500	14C / D	12.0		53,537	752	0	42,016	96,305	96,305
12-1520	State Trooper	FT	P	AA	Fairbanks	103	77J / K	12.0		107,277	5,414	21,249	70,615	204,555	204,555
12-1527	Criminal Justice Technician 1	FT	A	GP	Palmer	100	12K	12.0		52,884	0	0	40,152	93,036	93,036
12-1531	Sergeant DPS	FT	P	AA	Juneau	99	79O	12.0		147,158	6,883	23,707	86,243	263,991	263,991
12-1548	Sergeant DPS	FT	P	AA	Kodiak	99	79L / M	12.0		148,800	6,881	22,013	86,225	263,919	263,919
12-1550	State Trooper	FT	P	AA	Wasilla	100	77D / E	12.0		91,510	4,696	19,975	63,728	179,909	179,909
12-1552	State Trooper	FT	P	AA	Fairbanks	103	77J	12.0		103,646	5,220	20,278	68,755	197,899	197,899
12-1554	State Trooper	FT	P	AA	Saint Marys	99	77K / L	12.0		142,453	6,702	23,921	84,703	257,779	257,779
12-1556	Administrative Assistant 1	FT	A	GP	Bethel	150	12B / C	12.0		64,192	0	0	44,721	108,913	108,913
12-1557	Office Assistant 2	FT	A	GP	Anchorage	100	10B / C	12.0		37,114	0	0	33,779	70,893	70,893
12-1558	State Trooper	FT	P	AA	Soldotna	100	77C / D	12.0		90,106	4,544	17,773	62,271	174,694	174,694
12-1559	State Trooper	FT	P	AA	Bethel	150	77C / D	12.0		135,158	6,478	25,647	82,794	250,077	250,077
12-1561	State Trooper	FT	P	AA	Craig	1EE	77D / E	12.0		98,102	4,776	15,282	64,496	182,656	182,656
12-1563	Administrative Assistant 2	FT	A	GP	Anchorage	100	14J	12.0		58,871	0	0	42,571	101,442	101,442

Note: If a position is split, an asterisk (*) will appear in the Split/Count column. If the split position is also counted in the component, two asterisks (**) will appear in this column. [No valid job title] appearing in the Job Class Title indicates that the PCN has an invalid class code or invalid range for the class code effective date of this scenario.

Personal Services Expenditure Detail
Department of Public Safety

Scenario: FY2023 Governor (18673)
Component: Alaska State Trooper Detachments (2325)
RDU: Alaska State Troopers (160)

PCN	Job Class Title	Time Status	Retire Code	Barg Unit	Location	Salary Sched	Range / Step	Comp Months	Split / Count	Annual Salaries	COLA	Premium Pay	Annual Benefits	Total Costs	UGF Amount
12-1566	State Trooper	FT	P	AA	King Salmon	150	77D / E	12.0		139,834	6,535	22,382	83,278	252,029	252,029
12-1583	Sergeant DPS	FT	P	AA	Glennallen	99	79N	12.0		155,917	7,460	29,270	91,152	283,799	283,799
12-1588	State Trooper	FT	P	AA	Craig	99	77J	12.0		111,426	5,369	16,028	70,181	203,004	203,004
12-1590	State Trooper	FT	P	AA	Galena	99	77N / O	12.0		171,137	8,115	30,316	96,728	306,296	306,296
12-1593	State Trooper	FT	P	AA	Palmer	100	77J / K	12.0		101,979	5,052	17,948	67,140	192,119	192,119
12-1596	State Trooper	FT	P	AA	Fairbanks	103	77E / F	12.0		97,520	4,802	16,487	64,748	183,557	183,557
12-1601	State Trooper	FT	P	AA	Kodiak	111	77J	12.0		111,696	5,770	25,278	74,028	216,772	216,772
12-1604	Office Assistant 3	FT	A	GP	Dillingham	137	11D / E	12.0		58,520	0	0	42,429	100,949	100,949
12-1605	Administrative Assistant 1	FT	A	GP	Anchorage	100	12C / D	12.0		44,194	0	0	36,640	80,834	80,834
12-1606	Office Assistant 3	FT	A	GP	Kotzebue	160	11C / D	12.0		66,710	0	0	45,739	112,449	112,449
12-1608	Lieutenant DPS	FT	P	S2	Anchorage	99	24P	12.0		167,599	6,945	4,800	88,472	267,816	267,816
12-1610	State Trooper	FT	P	AA	Fairbanks	99	77J	12.0		106,756	5,235	17,515	68,895	198,401	198,401
12-1611	State Trooper	FT	P	AA	Soldotna	100	77K	12.0		104,395	5,393	23,624	70,410	203,822	203,822
12-1619	Office Assistant 2	FT	A	GP	Palmer	100	10J	12.0		44,870	0	0	36,913	81,783	81,783
12-1622	Criminal Justice Technician 1	FT	A	GP	Soldotna	100	12A / B	12.0		41,691	0	0	35,629	77,320	77,320
12-1623	Office Assistant 3	FT	A	GP	Kenai	100	11L	12.0		51,012	0	0	39,395	90,407	90,407
12-1631	Office Assistant 3	FT	A	GP	Tok	100	11B / C	12.0		39,922	0	301	35,035	75,258	75,258
12-1637	Administrative Assistant 3	FT	A	SS	Anchorage	500	15J	12.0		64,896	911	0	46,606	112,413	112,413
12-1647	Lieutenant DPS	FT	P	S2	Ketchikan	99	24N	12.0		157,210	6,526	4,800	84,911	253,447	253,447
12-1649	State Trooper	FT	P	AA	Wasilla	100	77A / B	12.0		83,699	4,301	18,411	59,940	166,351	166,351
12-1651	State Trooper	FT	P	AA	Palmer	100	77C / D	12.0		90,106	4,547	17,832	62,295	174,780	174,780
12-1652	State Trooper	FT	P	AA	Fairbanks	103	77F / J	12.0		101,244	5,256	23,530	69,098	199,128	199,128
12-1653	State Trooper	FT	P	AA	Fairbanks	103	77B / C	12.0		89,091	4,431	16,098	61,184	170,804	170,804
12-1654	State Trooper	FT	P	AA	Fairbanks	103	77D / E	12.0		96,052	4,786	17,575	64,594	183,007	183,007
12-1655	State Trooper	FT	P	AA	Palmer	99	77M / N	12.0		119,458	5,884	20,238	75,128	220,708	220,708
12-1656	State Trooper	FT	P	AA	Fairbanks	103	77N	12.0		120,078	5,927	27,056	78,108	231,169	231,169
12-1657	State Trooper	FT	P	AA	Seward	100	77C / D	12.0		90,106	4,592	18,899	62,726	176,323	176,323
12-1658	Sergeant DPS	FT	P	AA	Anchor Point	99	79M / N	12.0		138,247	6,415	21,004	82,261	247,927	247,927
12-1659	State Trooper	FT	P	AA	Palmer	99	77L	12.0		111,555	5,510	19,242	71,532	207,839	207,839
12-1660	Sergeant DPS	FT	P	AA	Soldotna	99	79N	12.0		147,158	6,874	23,483	86,166	263,681	263,681
12-1661	State Trooper	FT	P	AA	Tok	115	77D / E	12.0		107,172	5,448	22,170	70,944	205,734	205,734
12-1663	Sergeant DPS	FT	P	AA	Kotzebue	99	79O / P	12.0		239,564	11,358	42,390	124,324	417,636	417,636
12-1667	Procurement Specialist 1	FT	A	GP	Anchorage	100	14L / M	12.0		64,713	0	1,930	45,712	112,355	112,355
12-1677	Court Services Officer	FT	P	A2	Palmer	500	74N	12.0		89,544	2,762	8,827	58,429	159,562	159,562
12-1678	Court Services Officer	FT	P	A2	Kenai	500	74K / L	12.0		82,174	2,532	7,982	55,109	147,797	147,797
12-1679	Court Services Officer	FT	P	A2	Kenai	500	74M	12.0		86,299	2,761	12,035	58,414	159,509	159,509
12-1680	State Trooper	FT	P	AA	Wasilla	99	77C / D	12.0		94,354	4,803	19,664	64,752	183,573	183,573
12-1681	State Trooper	FT	P	AA	Wasilla	99	77M	12.0		117,980	5,812	20,007	74,438	218,237	218,237

Note: If a position is split, an asterisk (*) will appear in the Split/Count column. If the split position is also counted in the component, two asterisks (**) will appear in this column. [No valid job title] appearing in the Job Class Title indicates that the PCN has an invalid class code or invalid range for the class code effective date of this scenario.

Personal Services Expenditure Detail
Department of Public Safety

Scenario: FY2023 Governor (18673)
Component: Alaska State Trooper Detachments (2325)
RDU: Alaska State Troopers (160)

PCN	Job Class Title	Time Status	Retire Code	Barg Unit	Location	Salary Sched	Range / Step	Comp Months	Split / Count	Annual Salaries	COLA	Premium Pay	Annual Benefits	Total Costs	UGF Amount
12-1682	State Trooper	FT	P	AA	Wasilla	99	77C / D	12.0		94,354	4,875	21,373	65,443	186,045	186,045
12-1685	Court Services Officer	FT	P	A2	Palmer	500	74O / P	12.0		96,222	3,212	18,154	64,897	182,485	182,485
12-1693	Court Services Officer	FT	P	A2	Palmer	500	74C / D	12.0		69,202	2,140	6,994	49,468	127,804	127,804
12-1696	State Trooper	FT	P	AA	Wasilla	100	77B / C	12.0		86,500	4,338	16,491	60,296	167,625	167,625
12-1698	Court Services Officer	FT	P	A2	Fairbanks	503	74F / J	12.0		77,069	2,607	15,766	56,192	151,634	151,634
12-1699	Court Services Officer	FT	P	A2	Fairbanks	503	74M	12.0		88,878	2,784	10,267	58,742	160,671	160,671
12-1700	Court Services Officer	FT	P	A2	Fairbanks	503	74N	12.0		92,227	2,873	10,069	60,015	165,184	165,184
12-1701	Court Services Officer	FT	P	A2	Fairbanks	503	74L / M	12.0		87,277	2,703	8,979	57,574	156,533	156,533
12-1702	Court Services Officer	FT	P	A2	Fairbanks	503	74D / E	12.0		73,741	2,272	7,181	51,378	134,572	134,572
12-1703	Court Services Officer	FT	P	A2	Fairbanks	503	74N	12.0		92,227	2,859	9,569	59,813	164,468	164,468
12-1704	Court Services Officer	FT	P	A2	Juneau	505	74O	12.0		97,531	3,007	9,547	61,948	172,033	172,033
12-1705	State Trooper	FT	P	AA	Juneau	99	77F	12.0		104,894	4,977	13,250	66,419	189,540	189,540
12-1706	Court Services Officer	FT	P	A2	Ketchikan	5EE	74M / N	12.0		92,914	2,865	9,118	59,908	164,805	164,805
12-1708	State Trooper	FT	P	AA	Emmonak	99	77O / P	12.0		193,486	8,925	28,069	103,619	334,099	334,099
12-1709	State Trooper	FT	P	AA	Kotzebue	99	77M	12.0		185,168	8,645	29,432	101,235	324,480	324,480
12-1714	Court Services Officer	FT	P	A2	Anchorage	500	74O	12.0		92,893	2,991	13,629	61,723	171,236	171,236
12-1715	State Trooper	FT	P	AA	Palmer	100	77E / F	12.0		96,756	5,115	24,664	67,743	194,278	194,278
12-1716	Office Assistant 2	FT	A	GP	Palmer	99	10N / O	12.0		52,366	0	0	39,942	92,308	92,308
12-1763	Office Assistant 2	FT	A	GP	Anchorage	100	10C / D	12.0		38,521	0	2,935	35,534	76,990	76,990
12-1771	Office Assistant 3	FT	A	GP	Glennallen	100	11L / M	12.0		52,462	0	0	39,981	92,443	92,443
12-1773	Administrative Assistant 1	FT	A	GP	Anchorage	100	12D / E	12.0		45,055	0	1,708	37,678	84,441	84,441
12-1779	Court Services Officer	FT	P	A2	Nome	537	74M	12.0		118,227	3,641	11,413	71,065	204,346	204,346
12-1780	Major DPS	FT	P	S2	Anchorage	99	26Q / R	12.0		199,018	8,048	756	97,857	305,679	305,679
12-1823	State Trooper	FT	P	AA	Soldotna	99	77K	12.0		109,615	5,774	27,463	74,071	216,923	216,923
12-1824	State Trooper	FT	P	AA	Soldotna	99	77N / O	12.0		126,426	6,221	28,014	80,612	241,273	241,273
12-1829	Office Assistant 2	FT	A	GP	Anchorage	100	10A / B	12.0		36,953	0	0	33,714	70,667	70,667
12-1841	State Trooper	FT	P	AA	Wasilla	100	77O / P	12.0		124,920	6,310	31,729	81,369	244,328	244,328
12-1842	State Trooper	FT	P	AA	Juneau	99	77O	12.0		130,811	5,928	16,337	78,112	231,188	231,188
12-1843	State Trooper	FT	P	AA	Soldotna	99	77K	12.0		109,615	5,572	22,667	72,132	209,986	209,986
12-1844	State Trooper	FT	P	AA	Dillingham	137	77F	12.0		132,870	6,239	21,996	80,758	241,863	241,863
12-1845	State Trooper	FT	P	AA	Delta Junction	115	77F / J	12.0		115,031	5,782	22,225	74,142	217,180	217,180
12-1877	State Trooper	FT	P	AA	Wasilla	100	77J	12.0		100,630	5,129	21,124	67,878	194,761	194,761
12-1879	State Trooper	FT	P	AA	Emmonak	99	77P	12.0		205,056	10,037	44,106	113,083	372,282	372,282
12-1883	State Trooper	FT	P	AA	Unalakleet	150	77C / D	12.0		135,158	6,416	24,113	82,268	247,955	247,955
12-1884	State Trooper	FT	P	AA	Emmonak	99	77N / O	12.0		191,498	8,936	30,328	103,712	334,474	334,474
12-1886	State Trooper	FT	P	AA	Aniak	99	77M / N	12.0		152,320	7,049	22,655	87,651	269,675	269,675
12-1888	State Trooper	FT	P	AA	Soldotna	99	77N / O	12.0		126,426	6,037	23,424	79,039	234,926	234,926
12-1889	Criminal Justice Technician	FT	A	GP	Anchorage	99	12R / S	12.0		68,844	0	0	46,601	115,445	115,445

Note: If a position is split, an asterisk (*) will appear in the Split/Count column. If the split position is also counted in the component, two asterisks (**) will appear in this column. [No valid job title] appearing in the Job Class Title indicates that the PCN has an invalid class code or invalid range for the class code effective date of this scenario.

Personal Services Expenditure Detail
Department of Public Safety

Scenario: FY2023 Governor (18673)
Component: Alaska State Trooper Detachments (2325)
RDU: Alaska State Troopers (160)

PCN	Job Class Title	Time Status	Retire Code	Barg Unit	Location	Salary Sched	Range / Step	Comp Months	Split / Count	Annual Salaries	COLA	Premium Pay	Annual Benefits	Total Costs	UGF Amount
	1														
12-1895	Office Assistant 4	FT	A	SS	Fairbanks	503	12D / E	12.0		50,547	710	0	40,807	92,064	92,064
12-1900	Sergeant DPS	FT	P	AA	Palmer	100	79J	12.0		116,584	5,697	18,672	73,334	214,287	214,287
12-1903	Sergeant DPS	FT	P	AA	Craig	99	79J / K	12.0		133,317	6,304	23,175	81,315	244,111	244,111
12-1904	State Trooper	FT	P	AA	Dillingham	137	77C / D	12.0		123,448	5,971	20,355	76,788	226,562	226,562
12-1905	State Trooper	FT	P	AA	Nome	137	77C / D	12.0		123,448	5,984	19,720	76,531	225,683	225,683
12-1906	State Trooper	FT	P	AA	Kotzebue	160	77N / O	12.0		188,864	8,840	30,572	102,893	331,169	331,169
12-1907	State Trooper	FT	P	AA	Bethel	99	77O	12.0		164,717	7,628	24,650	92,585	289,580	289,580
12-1908	State Trooper	FT	P	AA	Bethel	99	77D / E	12.0		122,328	5,993	20,386	76,348	225,055	225,055
12-1909	State Trooper	FT	P	AA	Saint Marys	99	77J	12.0		132,088	6,148	20,533	79,988	238,757	238,757
12-1910	Court Services Officer	FT	P	A2	Bethel	550	74A / B	12.0		96,071	2,954	9,135	61,191	169,351	169,351
12-1911	State Trooper	FT	P	AA	Togiak	99	77C / D	12.0		117,943	5,742	18,376	73,764	215,825	215,825
12-1915	Court Services Officer	FT	P	A2	Anchor Point	500	74J	12.0		77,272	2,387	7,721	53,023	140,403	140,403
12-1916	Court Services Officer	FT	P	A2	Kenai	500	74M	12.0		86,299	2,663	8,535	57,000	154,497	154,497
12-1919	Captain DPS	FT	P	S2	Anchorage	99	25P	12.0		181,078	7,488	4,800	93,093	286,459	286,459
12-1923	State Trooper	FT	P	AA	Togiak	99	77P	12.0		170,876	7,780	22,264	93,878	294,798	294,798
12-1925	State Trooper	FT	P	AA	Wasilla	100	77B / C	12.0		86,500	4,515	20,675	61,987	173,677	173,677
12-1926	Sergeant DPS	FT	P	AA	Fairbanks	99	79M / N	12.0		143,917	7,009	30,063	87,310	268,299	268,299
12-1927	State Trooper	FT	P	AA	Anchor Point	99	77J / K	12.0		104,940	5,306	21,031	69,582	200,859	200,859
12-1928	State Trooper	FT	P	AA	Delta Junction	115	77C / D	12.0		103,626	5,094	17,303	67,545	193,568	193,568
12-1929	State Trooper	FT	P	AA	Soldotna	99	77D / E	12.0		95,790	4,785	17,801	64,579	182,955	182,955
12-1932	Court Services Officer	FT	P	A2	Fairbanks	503	74J	12.0		79,581	2,486	8,929	54,444	145,440	145,440
12-1933	Court Services Officer	FT	P	A2	Palmer	500	74N / O	12.0		92,753	2,853	8,827	59,726	164,159	164,159
12-1944	Court Services Officer	FT	P	A2	Palmer	500	74N / O	12.0		92,753	2,881	9,827	60,130	165,591	165,591
12-1945	Court Services Officer	FT	P	A2	Kenai	500	74O	12.0		92,893	2,893	10,129	60,308	166,223	166,223
12-1946	Court Services Officer	FT	P	A2	Fairbanks	503	74E / F	12.0		74,971	2,346	8,578	52,439	138,334	138,334
12-1947	Court Services Officer	FT	P	A2	Juneau	505	74N / O	12.0		94,895	2,924	9,231	60,755	167,805	167,805
12-1948	Court Services Officer	FT	P	A2	Fairbanks	503	74C / D	12.0		71,282	2,231	8,181	50,788	132,482	132,482
12-1949	Court Services Officer	FT	P	A2	Palmer	500	74M / N	12.0		88,868	2,735	8,535	58,038	158,176	158,176
12-1951	Office Assistant 2	FT	A	GP	Palmer	100	10C / D	12.0		38,469	0	0	34,327	72,796	72,796
12-1965	Court Services Officer	FT	P	A2	Bethel	550	74C / D	12.0		103,626	2,931	756	60,858	168,171	168,171
12-1971	Court Services Officer	FT	P	A2	Bethel	550	74M / N	12.0		133,312	3,956	12,926	77,772	227,966	227,966
12-1977	Office Assistant 4	FT	A	SS	Soldotna	500	12K / L	12.0		55,054	773	0	42,629	98,456	98,456
12-1997	Sergeant DPS	FT	P	AA	Bethel	150	79C / D	12.0		156,603	7,253	23,434	89,387	276,677	276,677
12-2002	State Trooper	FT	P	AA	Selawik	160	77C / D	12.0		144,165	7,019	30,063	87,395	268,642	268,642
12-2008	State Trooper	FT	P	AA	Selawik	99	77Q	12.0		226,918	10,823	41,755	119,771	399,267	399,267
12-2037	State Trooper	FT	P	AA	Bethel	99	77N / O	12.0		160,240	7,303	21,051	89,817	278,411	278,411
12-2044	State Trooper	FT	P	AA	Fairbanks	103	77F	12.0		99,902	4,911	16,687	65,791	187,291	187,291

Note: If a position is split, an asterisk (*) will appear in the Split/Count column. If the split position is also counted in the component, two asterisks (**) will appear in this column. [No valid job title] appearing in the Job Class Title indicates that the PCN has an invalid class code or invalid range for the class code effective date of this scenario.

Personal Services Expenditure Detail
Department of Public Safety

Scenario: FY2023 Governor (18673)
Component: Alaska State Trooper Detachments (2325)
RDU: Alaska State Troopers (160)

PCN	Job Class Title	Time Status	Retire Code	Barg Unit	Location	Salary Sched	Range / Step	Comp Months	Split / Count	Annual Salaries	COLA	Premium Pay	Annual Benefits	Total Costs	UGF Amount
12-2045	State Trooper	FT	P	AA	Fairbanks	103	77D / E	12.0		96,023	4,883	19,903	65,523	186,332	186,332
12-2046	State Trooper	FT	P	AA	Fairbanks	103	77C / D	12.0		92,585	4,636	17,464	63,148	177,833	177,833
12-2047	State Trooper	FT	P	AA	Fairbanks	103	77D / E	12.0		94,025	4,936	23,149	66,027	188,137	188,137
12-2048	State Trooper	FT	P	AA	Fairbanks	103	77L / M	12.0		114,512	5,879	25,044	75,072	220,507	220,507
12-2049	State Trooper	FT	P	AA	Soldotna	100	77K	12.0		104,395	5,164	18,200	68,218	195,977	195,977
12-2050	State Trooper	FT	P	AA	Soldotna	100	77C / D	12.0		89,752	4,511	17,338	61,952	173,553	173,553
12-2051	State Trooper	FT	P	AA	Soldotna	99	77J / K	12.0		113,208	5,632	20,488	72,704	212,032	212,032
12-2052	State Trooper	FT	P	AA	Palmer	100	77C / D	12.0		90,106	4,663	20,588	63,409	178,766	178,766
12-2053	State Trooper	FT	P	AA	Wasilla	100	77J / K	12.0		102,983	5,045	16,774	67,071	191,873	191,873
12-2054	State Trooper	FT	P	AA	Wasilla	100	77D / E	12.0		93,194	4,727	19,014	64,021	180,956	180,956
12-2055	State Trooper	FT	P	AA	Palmer	99	77D / E	12.0		97,854	5,098	23,164	67,581	193,697	193,697
12-2056	State Trooper	FT	P	AA	Palmer	100	77C / D	12.0		90,106	4,646	20,199	63,252	178,203	178,203
12-2057	State Trooper	FT	P	AA	Hooper Bay	99	77D / E	12.0		119,778	5,841	18,886	74,711	219,216	219,216
12-2058	State Trooper	FT	P	AA	Hooper Bay	99	77Q	12.0		212,743	9,784	30,140	110,930	363,597	363,597
12-2061	State Trooper	FT	P	AA	Anchorage	100	77J	12.0		100,630	4,271	756	59,647	165,304	165,304
12-2063	State Trooper	FT	P	AA	Anchorage	100	77K / L	12.0		105,699	4,484	756	61,696	172,635	172,635
12-2064	State Trooper	FT	P	AA	Anchorage	100	77E / F	12.0		95,379	4,049	756	57,525	157,709	157,709
12-2088	Court Services Officer	FT	P	A2	Juneau	505	74M	12.0		90,605	2,712	5,983	57,708	157,008	157,008
12-2089	Court Services Officer	FT	A	A2	Dillingham	537	74C / D	12.0		94,806	2,837	6,225	59,504	163,372	163,372
12-2090	Court Services Officer	FT	A	A2	Kodiak	511	74A / B	12.0		71,322	2,136	4,724	49,407	127,589	127,589
12-2091	State Trooper	FT	A	AA	Dillingham	137	77C / D	12.0		123,448	5,935	17,445	75,612	222,440	222,440
12-2095	Court Services Officer	FT	A	A2	Juneau	505	74C / D	12.0		72,654	2,179	4,947	50,036	129,816	129,816
12-2096	Court Services Officer	FT	A	A2	Kotzebue	560	74C / D	12.0		110,718	3,310	7,143	66,305	187,476	187,476
12-2097	State Trooper	FT	P	AA	Anchor Point	100	77F / J	12.0		98,295	4,658	12,296	63,367	178,616	178,616
12-2098	State Trooper	FT	A	AA	Anchor Point	99	77D / E	12.0		97,854	4,628	12,025	63,079	177,586	177,586
12-2099	State Trooper	FT	A	AA	Bethel	99	77F	12.0		127,305	5,983	15,919	76,554	225,761	225,761
12-2100	State Trooper	FT	A	AA	Emmonak	150	77C / D	12.0		135,158	6,123	16,838	79,774	237,893	237,893
12-2101	State Trooper	FT	A	AA	Glennallen	1FF	77E / F	12.0		105,303	4,989	13,131	66,536	189,959	189,959
12-2102	State Trooper	FT	A	AA	Unalakleet	99	77D / E	12.0		119,778	5,671	14,842	73,077	213,368	213,368
12-2104	State Trooper	FT	A	AA	Saint Marys	150	77C / D	12.0		135,158	5,725	756	73,600	215,239	215,239
12-2106	State Trooper	FT	A	AA	Kotzebue	160	77C / D	12.0		143,773	6,488	17,289	82,882	250,432	250,432
12-2109	Criminal Justice Technician 2	FT	A	GP	Ketchikan	100	14A / B	12.0		47,264	0	0	37,881	85,145	85,145
12-2112	Office Assistant 2	FT	A	GP	Bethel	150	10A / B	12.0		55,439	0	0	41,184	96,623	96,623
12-2113	Criminal Justice Technician 2	FT	A	GP	Anchorage	100	14M / N	12.0		65,694	0	0	45,328	111,022	111,022
12-2114	Office Assistant 2	FT	A	GP	Ketchikan	100	10A / B	12.0		36,953	0	0	33,714	70,667	70,667
12-2115	Criminal Justice Technician 2	FT	A	GP	Ketchikan	100	14A / B	12.0		47,483	0	0	37,969	85,452	85,452

Note: If a position is split, an asterisk (*) will appear in the Split/Count column. If the split position is also counted in the component, two asterisks (**) will appear in this column. [No valid job title] appearing in the Job Class Title indicates that the PCN has an invalid class code or invalid range for the class code effective date of this scenario.

Personal Services Expenditure Detail
Department of Public Safety

Scenario: FY2023 Governor (18673)
Component: Alaska State Trooper Detachments (2325)
RDU: Alaska State Troopers (160)

PCN	Job Class Title	Time Status	Retire Code	Barg Unit	Location	Salary Sched	Range / Step	Comp Months	Split / Count	Annual Salaries	COLA	Premium Pay	Annual Benefits	Total Costs	UGF Amount
12-2116	Criminal Justice Technician 2	FT	A	GP	Ketchikan	100	14A / B	12.0		47,483	0	0	37,969	85,452	85,452
12-2117	Criminal Justice Technician 2	FT	A	GP	Ketchikan	100	14A / B	12.0		47,483	0	0	37,969	85,452	85,452
12-2118	Criminal Justice Specialist	FT	A	SS	Ketchikan	100	16A / B	12.0		59,259	832	0	44,328	104,419	104,419
12-2119	Public Safety Technician 2	FT	A	GP	Bethel	150	11A / B	12.0		58,832	0	0	42,555	101,387	101,387
12-3049	Mail Services Courier	FT	A	GG	Anchorage	99	9R	12.0		55,489	0	1,067	41,636	98,192	0
12-3053	Office Assistant 3	FT	A	GP	Kodiak	111	11K	12.0		54,854	0	0	40,948	95,802	95,802
12-3107	Court Services Officer	FT	P	A2	Ketchikan	5EE	74O	12.0		99,861	3,078	9,757	62,974	175,670	175,670
12-3162	Administrative Assistant 2	FT	A	GP	Anchorage	100	14B / C	12.0		48,518	0	0	38,387	86,905	86,905
12-3202	Program Coordinator 1	FT	A	GP	Anchorage	100	18A	12.0		64,842	0	0	44,984	109,826	109,826
12-3829	Court Services Officer	FT	P	A2	Palmer	500	74M	12.0		86,299	2,691	9,535	57,404	155,929	155,929
12-3854	Office Assistant 3	FT	A	GP	Craig	100	11M	12.0		52,670	0	0	40,065	92,735	92,735
12-4204	Court Services Officer	FT	P	A2	Kenai	500	74K	12.0		80,163	2,475	7,982	54,297	144,917	144,917
12-4408	Court Services Officer	FT	P	A2	Fairbanks	503	74E / F	12.0		75,109	2,318	7,423	52,028	136,878	136,878
12-N09007	State Trooper	NP	N	AA	Fairbanks	103	77D	12.0		92,810	3,165	756	11,948	108,679	108,679
12-N12006	State Trooper	NP	N	AA	Anchorage	100	77A	12.0		80,683	2,755	756	10,400	94,594	94,594
12-N17007	State Trooper	NP	N	AA	Anchorage	100	77A	12.0		80,683	2,755	756	10,400	94,594	94,594
12-N17008	State Trooper	NP	N	AA	Anchorage	100	77A	12.0		80,683	2,755	756	10,400	94,594	94,594
12-N18003	State Trooper	NP	N	AA	Fairbanks	103	77A	12.0		83,096	2,837	756	10,708	97,397	97,397
12-N18004	State Trooper	NP	N	AA	Fairbanks	103	77A	12.0		83,096	2,837	756	10,708	97,397	97,397
12-N19003	State Trooper	NP	N	AA	Fairbanks	103	77A	12.0		83,096	2,837	756	10,708	97,397	97,397
12-N19004	State Trooper	NP	N	AA	Bethel	99	77A	12.0		105,902	3,608	756	13,620	123,886	123,886
12-N19007	State Trooper	NP	N	AA	Fairbanks	103	77D	12.0		92,810	3,165	756	11,948	108,679	108,679
12-N20001	Public Safety Technician 2	NP	N	GP	Anchorage	100	11A	12.0		38,162	0	0	24,742	62,904	62,904
12-N21002	State Trooper	NP	N	AA	Anchorage	100	77A	6.0	**	40,342	1,553	10,360	6,475	58,730	58,730
													Total Salary Costs:	39,489,441	
													Total COLA:	1,595,496	
													Total Premium Pay:	5,263,781	
													Total Benefits:	24,695,580	
													Total Pre-Vacancy:	71,044,298	
													Minus Vacancy Adjustment of 7.05%:	(5,008,998)	
													Total Post-Vacancy:	66,035,300	
													Plus Lump Sum Premium Pay:	231,900	
													Personal Services Line 100:	66,267,200	
		Total Component Months:	4,602.0												
		Total Positions:		New	Deleted										
Full Time Positions:		373	25	0											
Part Time Positions:		0	0	0											
Non Permanent Positions:		11	0	0											
Positions in Component:		384	25	0											

Note: If a position is split, an asterisk (*) will appear in the Split/Count column. If the split position is also counted in the component, two asterisks (**) will appear in this column. [No valid job title] appearing in the Job Class Title indicates that the PCN has an invalid class code or invalid range for the class code effective date of this scenario.

Personal Services Expenditure Detail
Department of Public Safety

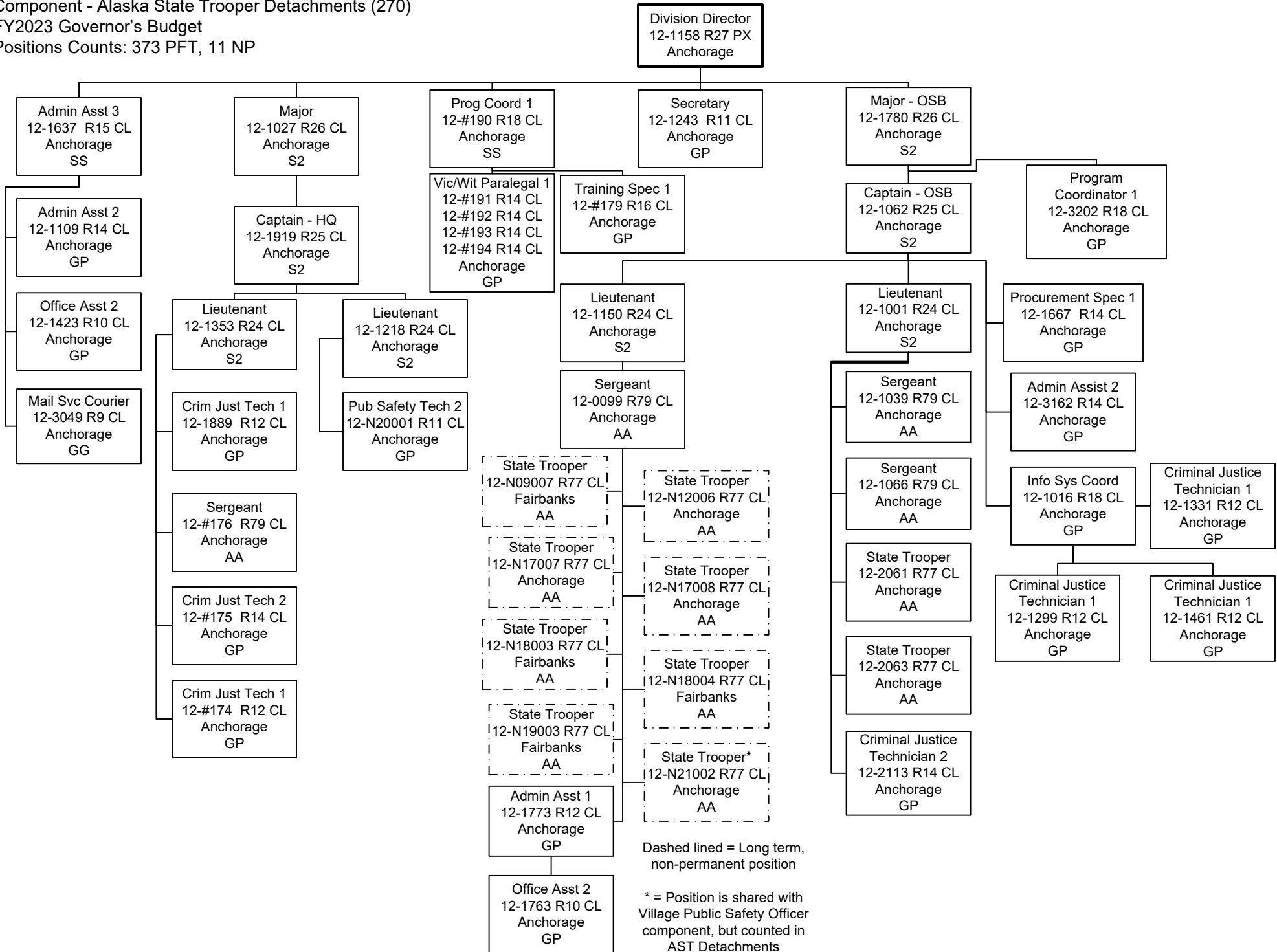
Scenario: FY2023 Governor (18673)
Component: Alaska State Trooper Detachments (2325)
RDU: Alaska State Troopers (160)

PCN Funding Sources:	Pre-Vacancy	Post-Vacancy	Percent
1004 General Fund Receipts	70,888,029	65,890,049	99.78%
1007 Interagency Receipts	156,269	145,251	0.22%
Total PCN Funding:	71,044,298	66,035,300	100.00%

Lump Sum Funding Sources:	Amount	Percent
1007 Interagency Receipts	191,900	83.00%
1007 Mental Health Trust Authority Authorized Receipts	40,000	17.00%
Total Lump Sum Funding:	231,900	100.00%

Note: If a position is split, an asterisk (*) will appear in the Split/Count column. If the split position is also counted in the component, two asterisks (**) will appear in this column. [No valid job title] appearing in the Job Class Title indicates that the PCN has an invalid class code or invalid range for the class code effective date of this scenario.

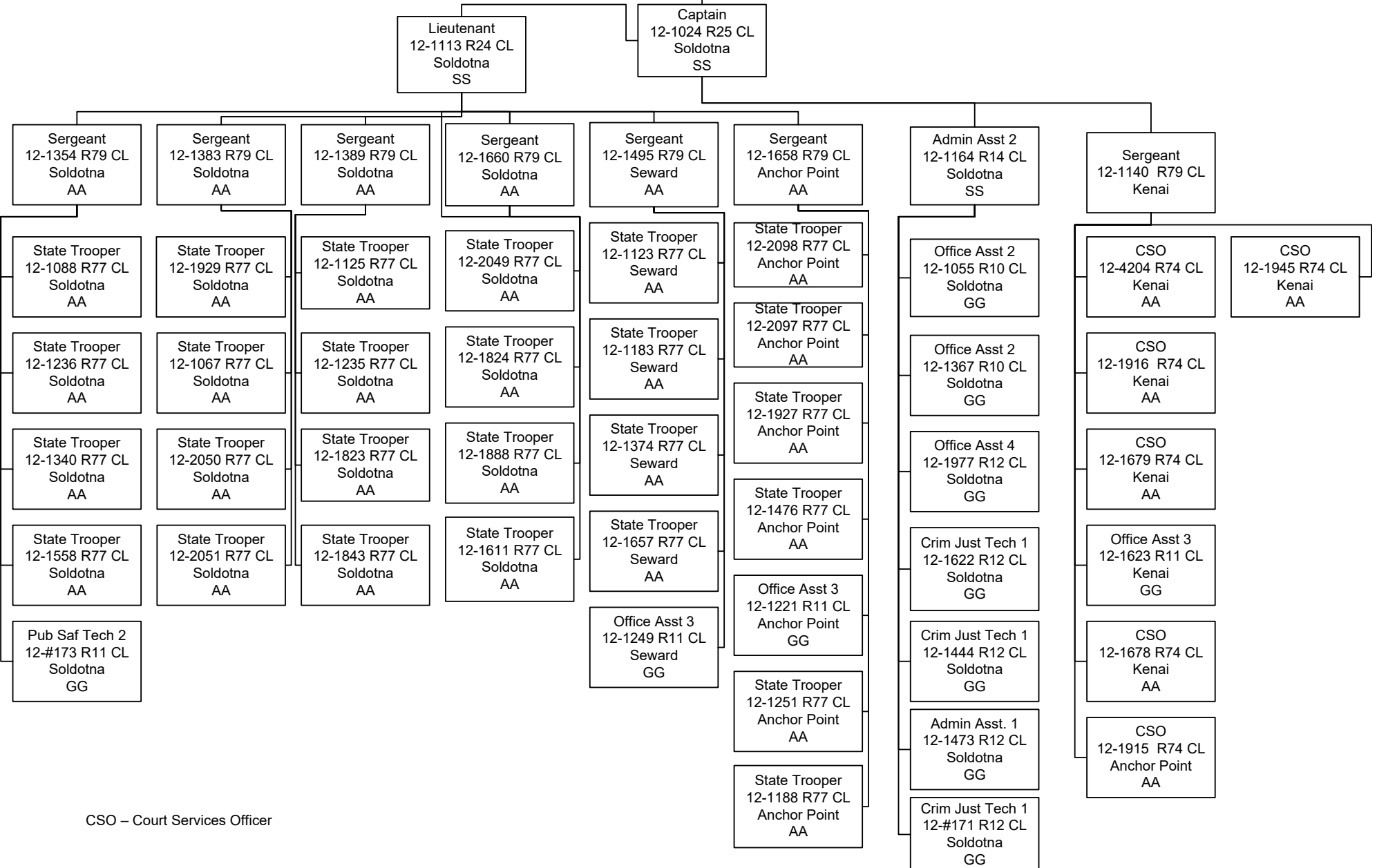
Department of Public Safety
 RDU Alaska State Troopers (P200)
 Component - Alaska State Trooper Detachments (270)
 FY2023 Governor's Budget
 Positions Counts: 373 PFT, 11 NP



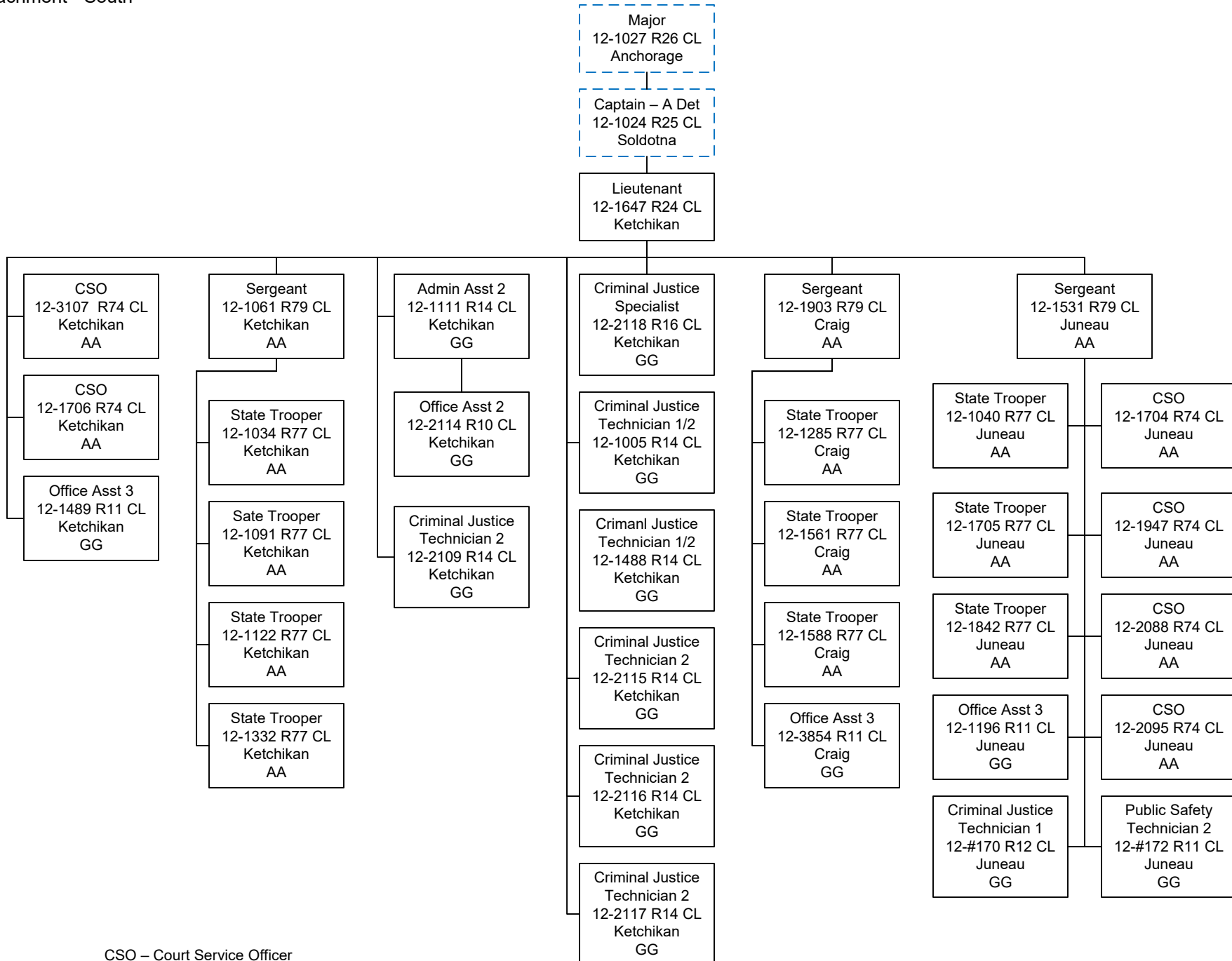
Department of Public Safety
 RDU: Alaska State Troopers (P200)
 Component: Alaska State Trooper Detachments (270)
 FY2023 Governor's Budget
 A Detachment – North

Major
 12-1027 R26 CL
 Anchorage
 SS

Dashed line position is on
 previous org chart



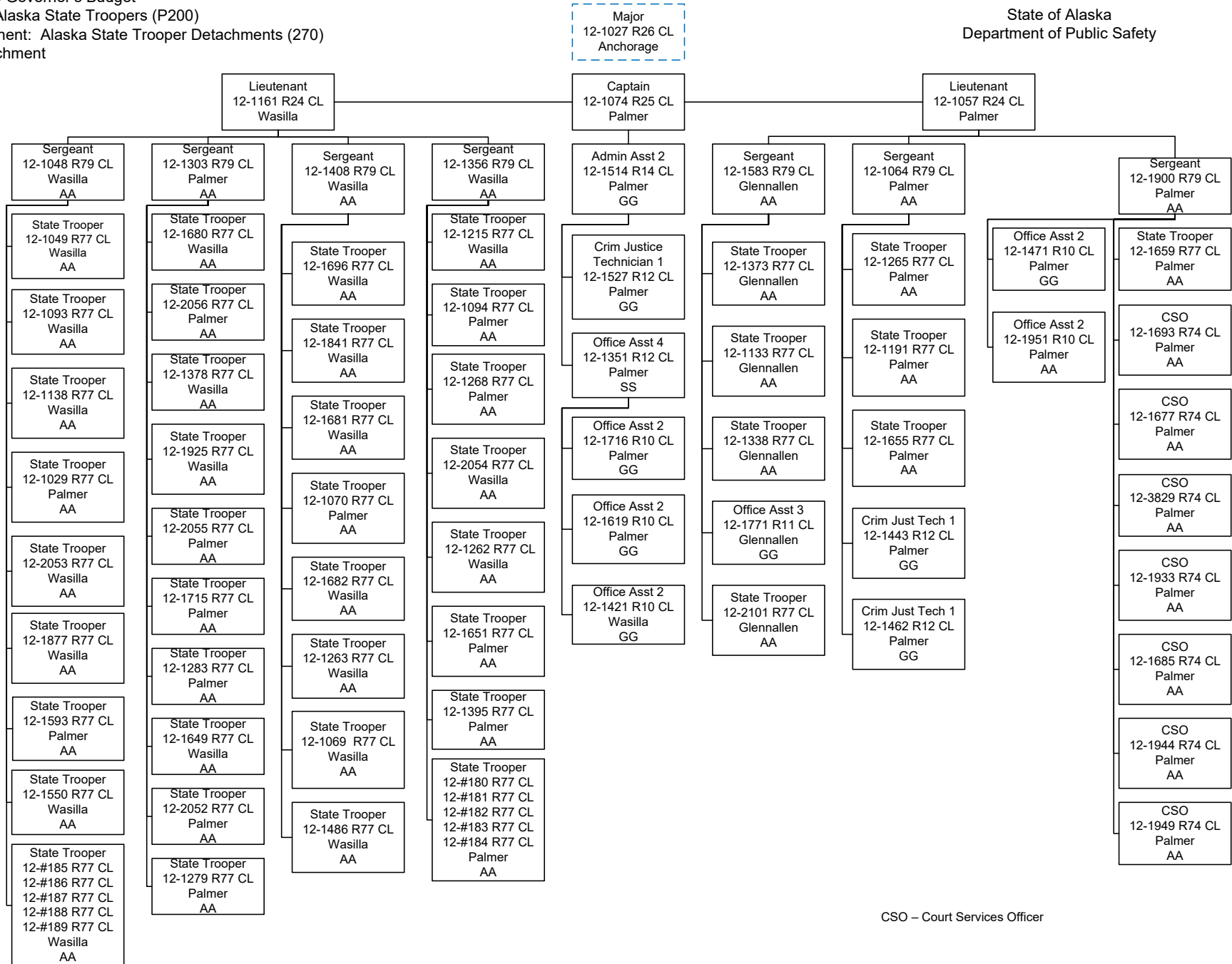
CSO – Court Services Officer



CSO – Court Service Officer
 ESD – Emergency Service Dispatcher

FY2023 Governor's Budget
 RDU: Alaska State Troopers (P200)
 Component: Alaska State Trooper Detachments (270)
 B Detachment

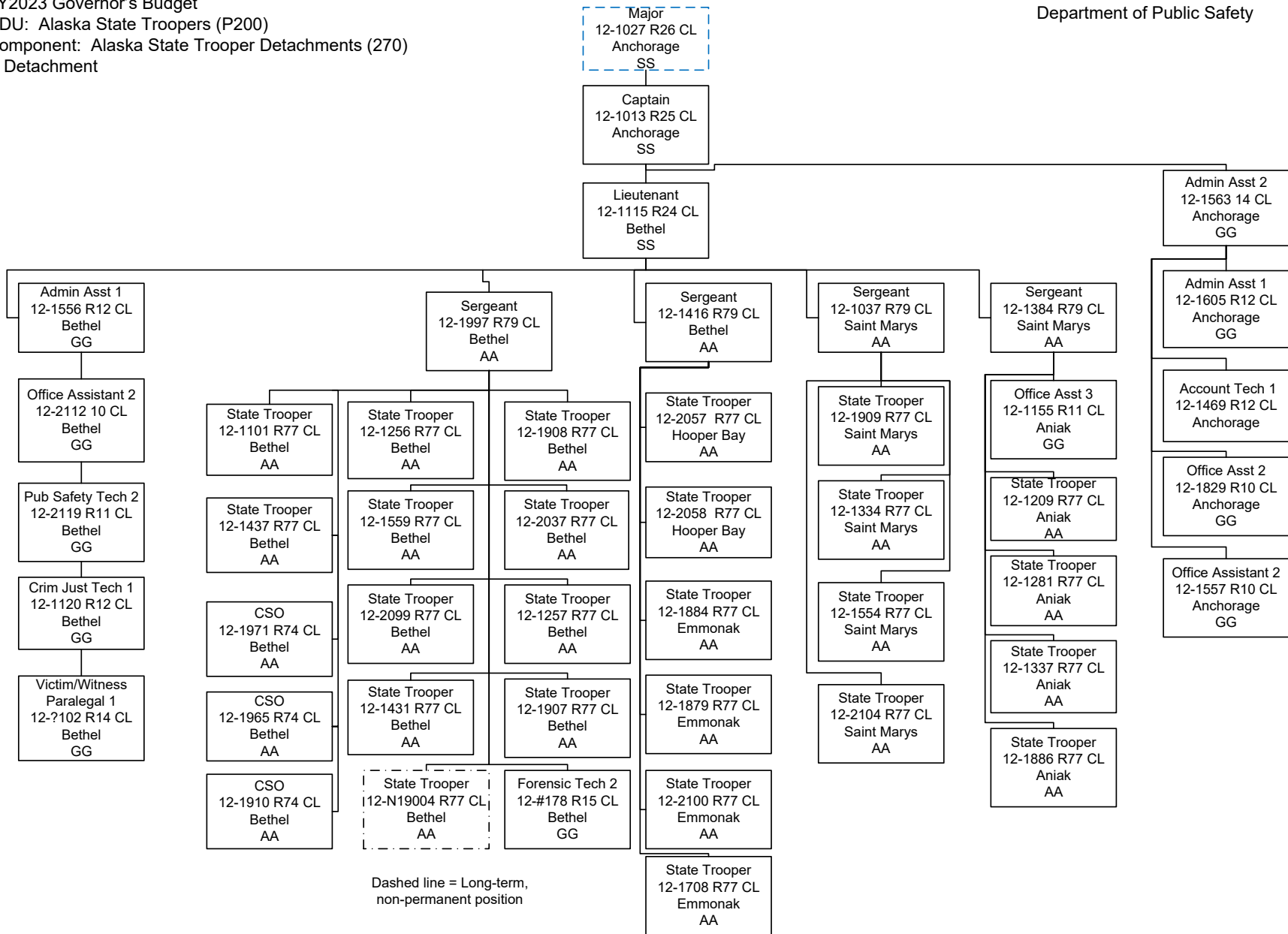
State of Alaska
 Department of Public Safety



CSO – Court Services Officer

FY2023 Governor's Budget
 RDU: Alaska State Troopers (P200)
 Component: Alaska State Trooper Detachments (270)
 C Detachment

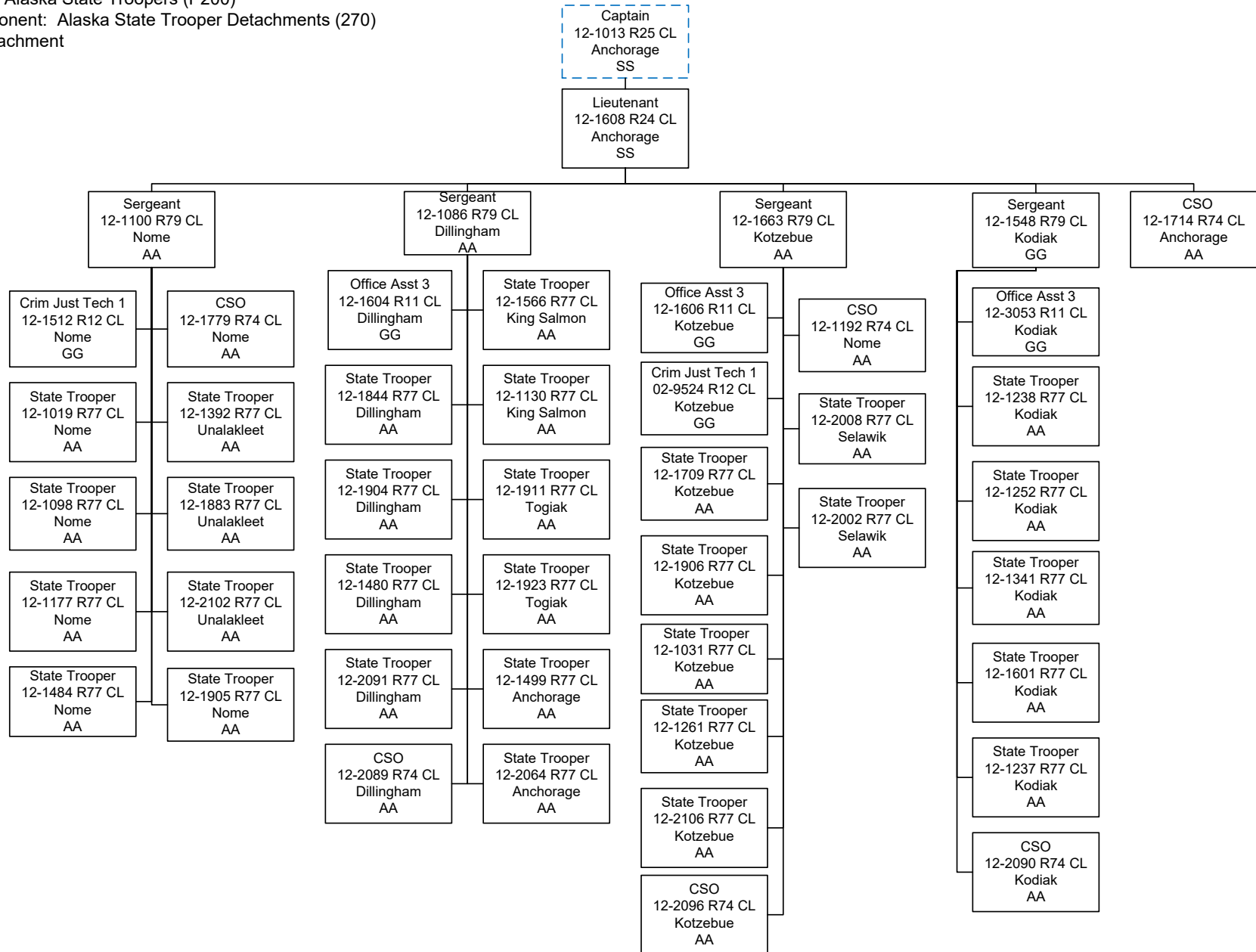
State of Alaska
 Department of Public Safety



Dashed line = Long-term, non-permanent position

FY2023 Governor's Budget
 RDU: Alaska State Troopers (P200)
 Component: Alaska State Trooper Detachments (270)
 C Detachment

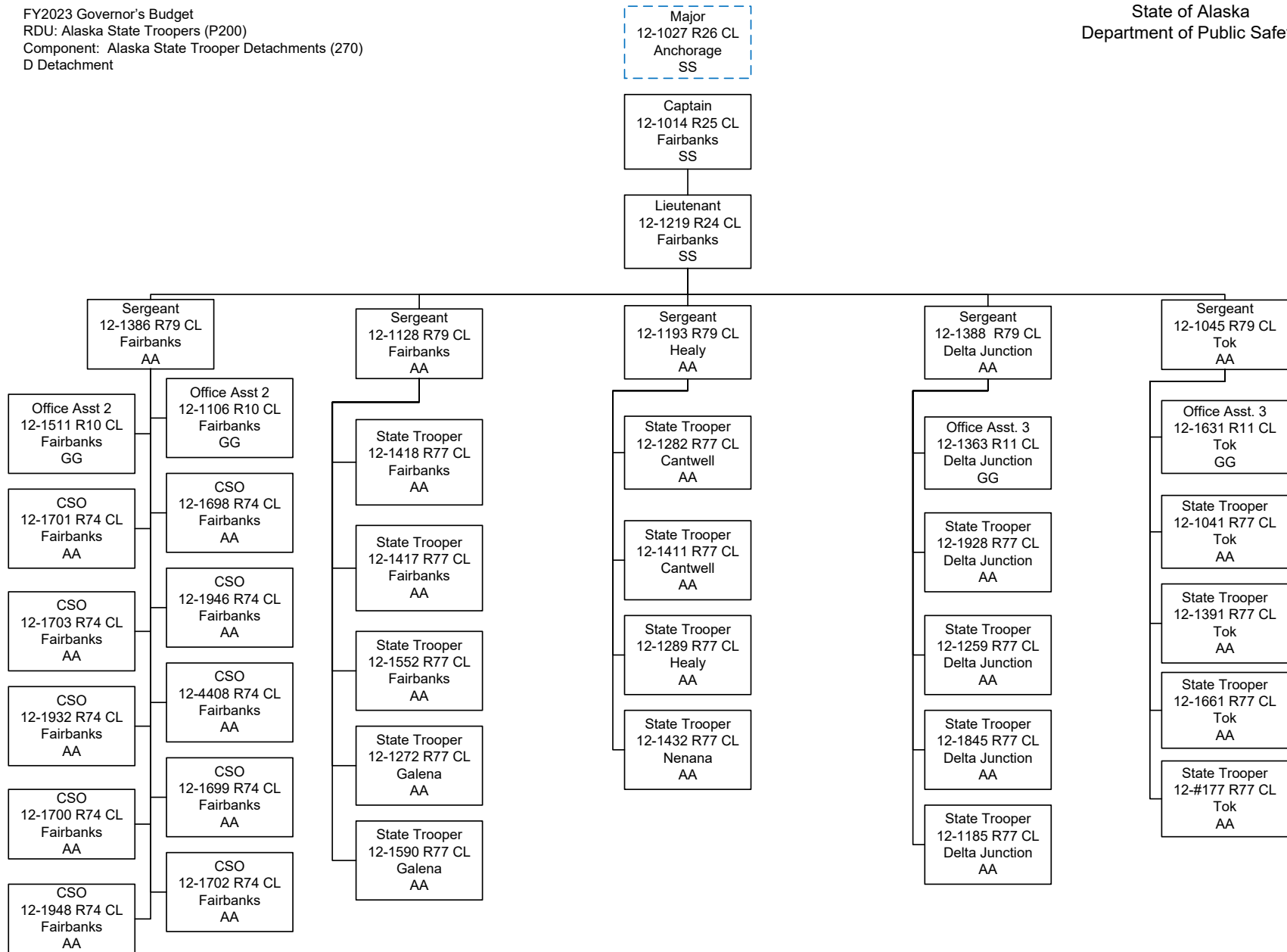
State of Alaska
 Department of Public Safety



CSO – Court Services Officer

FY2023 Governor's Budget
 RDU: Alaska State Troopers (P200)
 Component: Alaska State Trooper Detachments (270)
 D Detachment

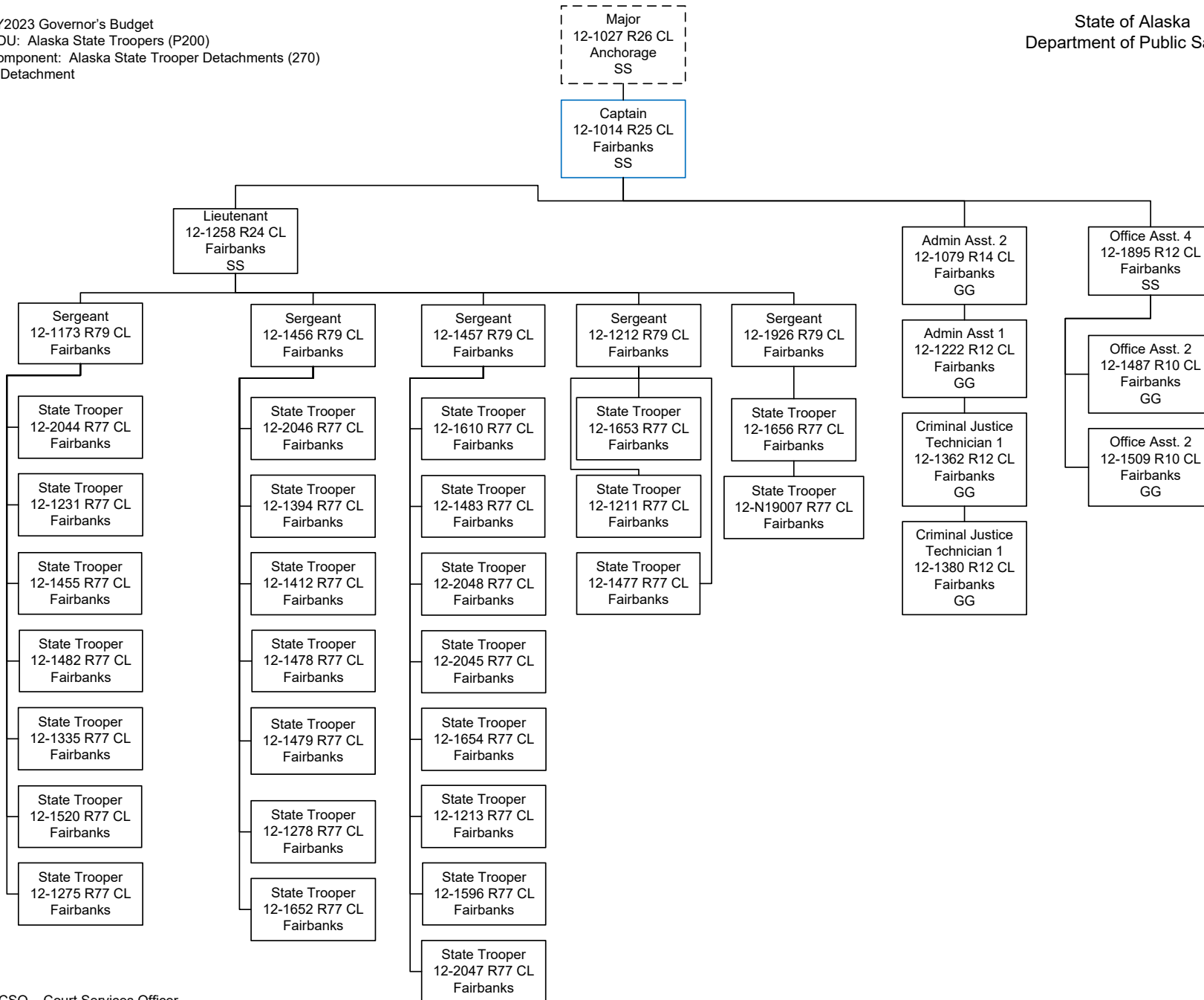
State of Alaska
 Department of Public Safety



CSO=Court Service Officer

FY2023 Governor's Budget
 RDU: Alaska State Troopers (P200)
 Component: Alaska State Trooper Detachments (270)
 D Detachment

State of Alaska
 Department of Public Safety



CSO – Court Services Officer