

State of Alaska FY2023 Governor's Operating Budget

Department of Public Safety Alaska Bureau of Investigation Component Budget Summary

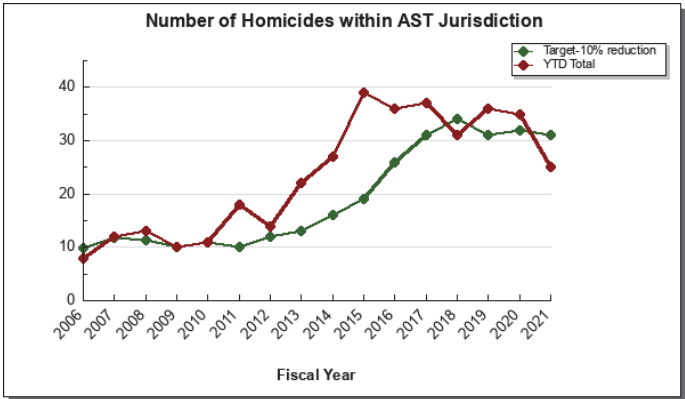
Component: Alaska Bureau of Investigation

Contribution to Department's Mission

Preserve public peace; protect life, property, and resources.

Results

(Additional performance information is available on the web at <https://omb.alaska.gov/results>.)



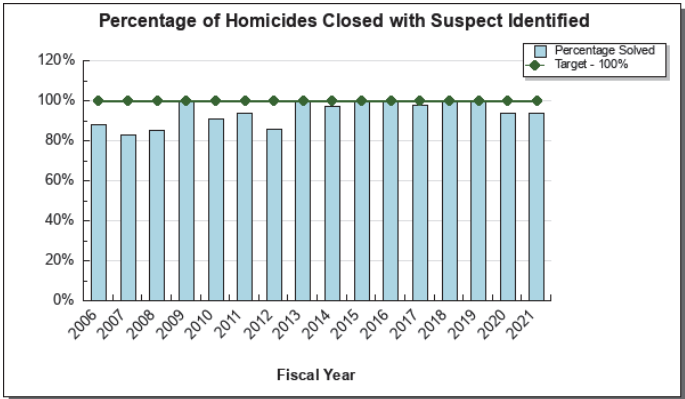
Core Services

- Create deterrence through 100% homicide solve rate.
- Reduce the incidence of victimization of women and children by sexual offenders.
- Improve alcohol and drug investigations and interdictions.

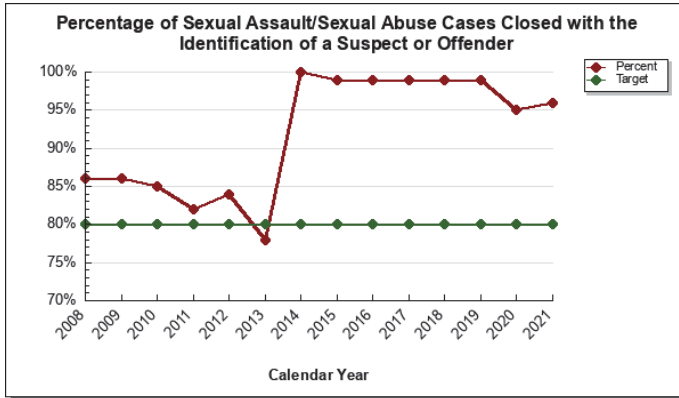
Measures by Core Service

(Additional performance information is available on the web at <https://omb.alaska.gov/results>.)

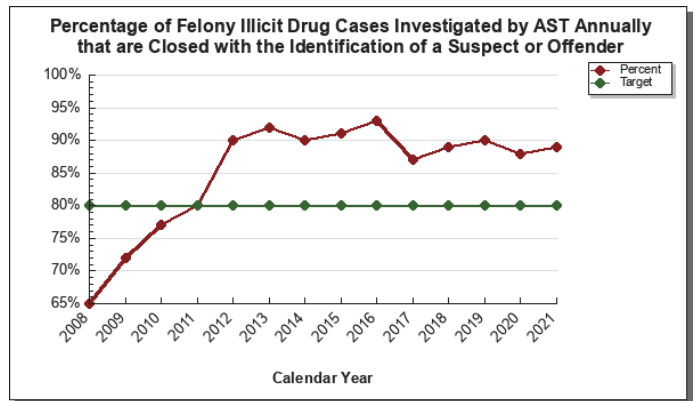
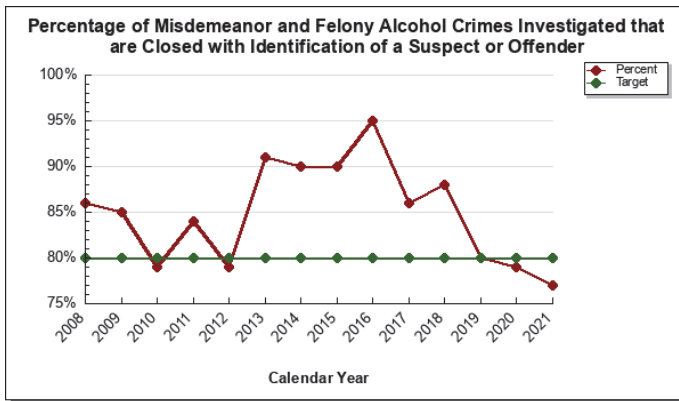
1. Create deterrence through 100% homicide solve rate.



2. Reduce the incidence of victimization of women and children by sexual offenders.



3. Improve alcohol and drug investigations and interdictions.



Major Component Accomplishments in 2021

During FY2021, the Alaska Bureau of Investigation (ABI) Cold Case Unit (CCU) solved one unresolved homicide case. The homicide was a high profile 1996 murder of a 17-year-old-female in Sitka. This case brought national attention to the ABI Cold Case Unit. In this case, ABI identified the suspect using genetic testing. The CCU also assisted the Anchorage Police Department with its efforts to create its own cold case unit. With the aid of genetic genealogy, the victim of a 1979 homicide was identified, and his murder investigation is ongoing. Also, genetic genealogy research helped identify one of serial killer Robert Hansen’s unidentified victims from 1983. DNA confirmation by the Alaska State Crime Detection Laboratory is pending. Seventy homicide/suspicious missing person case reports were organized, scanned, and uploaded into the case management system, to include all the case reports related to the 17 known Robert Hansen murders from 1979 to 1983. Lastly, the CCU assisted the Snohomish Co. Sheriff’s Office with an unsolved homicide from 1991. The unidentified victim is suspected to be an Alaskan resident who disappeared in 1991.

The ABI Major Crimes Unit (MCU) conducted eight officer use-of-deadly-force investigations. The MCU also had case responsibility for two homicides which occurred in the communities of New Stuyahok and Emmonak. The Major Crimes Unit conducts significant investigative work in Department of Corrections facilities, assists with crimes against children cases, conducts use-of-deadly-force investigations for DPS and other Alaska law enforcement agencies, and provides statewide investigative support.

In April 2021, the ABI Technical Crimes Unit (TCU) conducted “Operation Northern Exposure” in the Fairbanks/North Pole areas. The TCU executed 55 search warrants and seized over 87 electronic devices as a result. During this operation, two individuals were arrested for felony charges related to internet crimes against children, and charges against ten additional suspects are being considered as result of the operation. Three minors were identified as potential victims of sexual abuse. TCU investigators conducted an investigation into a St. George Island suspect for

suspected child exploitation.

The TCU assisted Troopers and ABI with numerous homicide and officer involved shooting investigations. The forensic laboratory conducted hundreds of digital forensic exams on various cell phones, computers, and DVRs over the course of the year involving most investigations in the state.

The Financial Crimes Unit (FCU) completed a complex financial investigation where numerous suspects were found to have committed over 100 identify thefts, mail thefts, forgeries, and credit card frauds. In the end, over 45 victims were identified and contacted. In this case, charges were forwarded to the Office of Special Prosecutions. An FCU investigator along with Statewide Drug Enforcement Unit investigators were nominated and received the 2021 FinCEN Director's Law Enforcement Award for their work with a Kodiak drug investigation involving a complex digital currency scheme. In this investigation, over \$300,000 in digital currency was located and seized.

The ABI Special Crimes Investigation Unit (SCIU) provided critical support in the New Stuyahok murder, a murder in Turnagain Pass (Seward), and the Chena Hot Springs serial arsons. They also conducted two human trafficking sting operations, resulting in several human trafficking investigations. One of the human trafficking investigations spanned three states and resulted in a joint investigation with the Department of Homeland Security and the King County Sherriff's office in Washington state. Additionally, the SCIU worked with the High Intensity Drug Trafficking Area and statewide drug units to further their investigative efforts. The SCIU continues to assist other investigative units within AST as well as other departments in complex and long-term investigations.

ABI staff taught at the Public Safety Academy, including instruction in crime scene investigation, interviewing and interrogation, sexual exploitation of children crimes, technical crimes, terrorism, sovereign citizens, and Sexual Assault Response Team (SART) response. ABI's ancillary duties include statewide polygraph support, 3D digital crime scene mapping, conducting administrative or criminal investigations of DPS employees, and overseeing the Alaska Drug Recognition Expert (DRE) and K9 programs.

In FY2021, ABI achieved an 84% homicide clearance rate. This includes homicides in Alaska State Trooper (AST) jurisdiction as well as cases for which AST was invited to investigate within a borough, city, or municipal jurisdiction. ABI and the other State Trooper detachments have the following combined homicide clearance rates by fiscal year. FY21 does not include officer involved uses of deadly force:

- FY2015 - 28 homicides with 22 resolved (or 79% clearance)
- FY2016 - 25 homicides with 11 resolved (44%)
- FY2017 - 16 homicides with 15 resolved (94%)
- FY2018 - 19 homicides with 17 resolved (89%)
- FY2019 - 18 homicides with 18 resolved (100%)
- FY2020 - 28 homicides with 26 resolved (93%)
- FY2021 - 19 homicides with 16 resolved (84%)

Key Component Challenges

Despite staffing and resource challenges, ABI units consistently provide top-notch investigative assistance throughout the state.

The ABI Cold Case Unit (CCU) currently has over 100 open homicide and suspicious missing persons cold cases. Since the CCU was reestablished in April 2017, the unit has consisted of one long-term non-permanent (LTNP) commissioned employee and no dedicated administrative help. Each case report represents hundreds, if not thousands, of man-hours dedicated to solving a murder. Once the leads grow cold and the investigations slip into dormancy, it is often several years before the cases are reexamined. During this time, memories fade and the subjects of the investigations can pass away, making closure problematic. With these challenges, the CCU has generated a list of priorities to be successful – which would all be aided significantly with an additional investigator:

1. Continually review cases and concentrate efforts on those with the highest probability of developing viable leads and suspects.
2. Modernize the “legacy” reports by uploading them into the digital records management system, allowing the CCU personnel to access pertinent information more easily.
3. Continue collaborating with government and private entities involved in genetic DNA testing to link evidence to

potential suspects through family lineage.

The ABI Technical Crimes Unit (TCU) are members of the ICAC (Internet Crimes Against Children) Task Force. The AST TCU currently has a Sergeant and three dedicated investigators. The Anchorage Police Department manages the pass-through Federal Justice Assistance Grant (JAG) to help offset the high cost of training and equipment needed to address the overwhelming number of cases involving sexually exploited children. It is through this partnership that AST maximizes its capabilities and services to the agency and others throughout the state. The ICAC grant money enables the ABI TCU to collaborate with other ICAC investigators around Alaska to combat child exploitation, sexual abuse of minors, and the production and distribution of what has been traditionally referred to as “child pornography.” Even with a team of dozens of TCU investigators and administrative support working 24/7/365 each investigator would stay busy with productive work. Given the significant workload that exists, the TCU has needed to work smarter to maximize their effectiveness. Complaints are now being triaged to target offenders who exhibit a greater risk to children. Examples include suspects who are not simply downloading thousands of sexually explicit images of children, but who also distribute these images to others, have prior convictions for sexual violence, have access to children at home or at their place of work, are registered sex offenders, and/or a host of other factors. Having adequate staffing numbers would allow this group of highly trained and specialized investigators to target local perpetrators. This need will always be tied to continued training and equipment upgrades, coupled with mental health “maintenance” to ensure the TCU members aren’t overwhelmed by the images and material they regularly encounter.

One additional challenge is the comparative pay issue for the two non-commissioned employees (Criminal Intelligence Analysts, CIA) within TCU. The TCU has lost six non-commissioned employees in the last eight years to higher-paying jobs elsewhere. The nature of the work assigned to the CIA positions, when compared to similar job descriptions for other police departments, pays significantly less. A comparison conducted in 2019 revealed the following – a CIA within ABI would need to be employed for 26 years to make the same as the starting salary for a Cyber Crimes Technician at the Anchorage Police Department. These positions require months of expensive training and at least a year of work for someone to become proficient; we are training employees for other departments. For these reasons, and through whatever mechanism is most appropriate, pay for the non-commissioned personnel within ABI must increase for us to stop losing employees to other departments. The forensic analysis of computers and cell phones for these investigations is also a bottleneck. Investigators often assist the two analysts to work through the extensive data and forensic analysis necessary in these cases. Additional Criminal Intelligence Analysts within TCU would significantly increase the productivity of the unit and keep the investigators solely focused on fieldwork.

The ABI Financial Crimes Unit (FCU) is staffed with two commissioned positions. The FCU is responsible for conducting, assisting with, and/or providing guidance on complex financial crimes around Alaska. These investigators require hundreds of hours of specialized training to attain the status of Certified Financial Examiner (CFE). Due to the nature of transfers within the AST division, it is likely that someone having received their CFE would subsequently leave for a different assignment and never work another financial crime again. Additionally, the volume of paperwork and time required to conduct a thorough investigation can be overwhelming. This results in the fact that many financial crimes, assigned to patrol troopers, are not worked effectively.

The ABI Major Crimes Unit (MCU) essentially operates as a reactive unit. While the unit’s name suggests they respond to “major” crimes, a disproportionate amount of time is spent responding to criminal complaints within DOC facilities which has created a significant backlog. The unit also spends time assisting other trooper detachments and municipal agencies with interviews, search warrant services, evidence collection, and other mundane tasks. These responsibilities are a significant burden to this unit which is responsible for all trooper-involved uses-of deadly-force investigations, complex murders, child abductions, and other high-profile, complex, and/or time-consuming investigations. Staff are required to transport fragile and expensive specialized equipment to the most remote locations to fulfill assignments. They are expected to keep up on current training trends, competently utilize equipment and resources, and produce impeccable police reports. Highly visible, scrutinized, and high-liability events often must be addressed at a moment’s notice.

The ABI Special Crimes Investigation Unit (SCIU) has existed since 2014 but has shifted its focus multiple times during its existence. The unit currently addresses human trafficking cases, assists with deadly-force incidents, and provides additional investigative support as needed across the state, for the most complex and serious criminal offenses. The focus has drifted toward that of being the “Swiss Army knife” for handling major events. The SCIU is

tasked with providing specialized and highly technical assistance in cases involving human trafficking, illicit drugs sales, murder, and other serious felony offenses. The SCIU was instrumental in several homicide investigations in FY21 and acts as the investigative support unit for the Alaska Criminal Intelligence Center. The task force officers with the Alaska Bureau of Alcohol, Tobacco, Firearms and Explosives, the Federal Bureau of Investigation, and the US Marshals are all supervised within SCIU.

Significant Changes in Results to be Delivered in FY2023

The structure of ABI and statewide investigations has changed, and effective November 1, 2021, the investigative units currently assigned to the Detachments in Fairbanks, Soldotna, and the Mat-Su Valley will again be under the Alaska Bureau of Investigation. This statewide ABI model provides additional oversight of investigations, ensures reports are consistent, appropriate training is received, and equipment is utilized to better support complex investigations statewide, as all investigators will fall under a single command. ABI is also working toward establishing a rural investigative unit. The rural investigative unit will have positions in Bethel, Kotzebue, Nome, and King Salmon to provide support to rural communities.

The Child Abuse Investigative Unit (CAIU) in the Mat-Su Valley has a significantly high workload. ABI is working toward establishing a dedicated Sergeant position and moving two additional investigators to the CAIU in the Mat-Su Valley. These positions would also support our responsibilities to the Anchorage Crimes Against Children unit. This restructure should bring increased efficiency and improve the investigations for these crimes against children.

Efforts to better utilize techniques for intelligence-led policing will be implemented within ABI units and heavily supported through the AKCIC.

In a general sense, ABI will continue to augment the efforts of the trooper detachments and municipal partners with general investigations and partner with federal agencies to address more sophisticated and organized criminal activity. A focus is placed on investigative effectiveness and overall efficiency with the positions dedicated to ABI.

Statutory and Regulatory Authority

DPS - Powers and duties of department (AS 44.41.020)
State Troopers (AS 18.65.010 - AS 18.65.110)
Police Protection (AS 18.65.010 - AS 18.65.790)
Law enforcement duties (AS 18.65.010 - AS 18.65.086)
Controlled Substances (AS 11.71.010 - AS 11.71.900)
Judicial Services (AS 22.20.100 - AS 22.20.140)
Prisoner Transportation (AS 33.30.071 and AS 33.30.081)
Search & Rescue (AS 18.60.120 - AS 18.60.175)
Village Public Safety Officer Definition (AS 01.10.060(c)(7)(C))
VPSO Program (AS 18.65.670)
VPSO Regulations (13 AAC 96.010-900)
Concealed Handgun Permits (AS 18.65.700)
Security Guard Licensing (AS 18.65.400 - AS 18.65.410)
Sex Offender Registration (AS 12.63.010 - AS 12.63.100)
Central Registry of Sex Offenders (AS 18.65.087)
Department to assist other agencies (AS 18.65.090)
Document and disseminate information regarding homicides (AS 44.41.040)
Document and investigate missing persons (AS 18.65.610)
Investigate fires resulting from crimes (AS 18.70.030)
Investigate sexual assault and child exploitation (AS 18.65.086)
Aeronautics (AS 02)
Criminal (AS 11)
Environment (AS 46)
Fish & Game (AS 16)
Fish & Game (5 AAC)
Guide/Outfitting (12 AAC)
Guide/Outfitting (AS 08)

Health & Safety (AS 18)
Limited Entry (20 AAC)
State Government (AS 44)
Environment (AS 46)
Fish & Game (AS 16)
Fish & Game (5 AAC)
Guide/Outfitting (12 AAC)
Guide/Outfitting (AS 08)
Health & Safety (AS 18)
Limited Entry (20 AAC)
State Government (AS 44)

Contact Information
<p>Contact: Elizabeth Dunayski, Administrative Services Director Phone: (907) 465-5501 E-mail: elizabeth.dunayski@alaska.gov</p>

Alaska Bureau of Investigation Personal Services Information					
Authorized Positions			Personal Services Costs		
	<u>FY2022</u> <u>Management</u> <u>Plan</u>	<u>FY2023</u> <u>Governor</u>			
Full-time	48	66	Annual Salaries		7,240,268
Part-time	0	0	COLA		267,945
Nonpermanent	3	3	Premium Pay		561,869
			Annual Benefits		4,302,259
			<i>Less 7.00% Vacancy Factor</i>		(866,064)
			Lump Sum Premium Pay		0
Totals	51	69	Total Personal Services		11,506,277

Position Classification Summary					
Job Class Title	Anchorage	Fairbanks	Juneau	Others	Total
Administrative Assistant 2	1	0	0	0	1
Corporal DPS	1	0	0	0	1
Crim Int Any 1	4	0	0	0	4
Crim Int Any 2	3	0	0	0	3
Crim Int Any 3	1	0	0	0	1
Criminal Justice Technician 1	1	0	0	0	1
Criminal Justice Technician 2	3	0	0	1	4
Data Processing Manager 2	1	0	0	0	1
Forensic Technician 2	0	1	0	0	1
Lieutenant DPS	3	0	0	0	3
Office Assistant 2	2	0	0	0	2
Office Assistant 3	1	1	0	1	3
Program Coordinator 2	1	0	0	0	1
Sergeant DPS	2	1	0	4	7
State Trooper	10	5	0	21	36
Totals	34	8	0	27	69

Component Detail All Funds
Department of Public Safety

Component: Alaska Bureau of Investigation (2744)
RDU: Alaska State Troopers (160)

Non-Formula Component

	FY2021 Actuals	FY2022 Conference Committee	FY2022 Authorized	FY2022 Management Plan	FY2023 Governor	FY2022 Management Plan vs FY2023 Governor	
71000 Personal Services	4,108.8	5,375.3	5,375.3	8,817.8	11,506.3	2,688.5	30.5%
72000 Travel	81.6	60.0	60.0	60.0	60.0	0.0	0.0%
73000 Services	880.7	403.6	403.6	438.4	861.4	423.0	96.5%
74000 Commodities	52.4	48.0	48.0	48.0	100.5	52.5	109.4%
75000 Capital Outlay	0.0	5.2	5.2	5.2	205.2	200.0	3846.2%
77000 Grants, Benefits	0.0	0.0	0.0	0.0	0.0	0.0	0.0%
78000 Miscellaneous	0.0	0.0	0.0	0.0	0.0	0.0	0.0%
Totals	5,123.5	5,892.1	5,892.1	9,369.4	12,733.4	3,364.0	35.9%
Fund Sources:							
1004 Gen Fund (UGF)	4,946.2	5,892.1	5,892.1	9,369.4	12,483.4	3,114.0	33.2%
1007 I/A Rcpts (Other)	0.0	0.0	0.0	0.0	250.0	250.0	100.0%
1061 CIP Rcpts (Other)	177.3	0.0	0.0	0.0	0.0	0.0	0.0%
Unrestricted General (UGF)	4,946.2	5,892.1	5,892.1	9,369.4	12,483.4	3,114.0	33.2%
Designated General (DGF)	0.0	0.0	0.0	0.0	0.0	0.0	0.0%
Other Funds	177.3	0.0	0.0	0.0	250.0	250.0	100.0%
Federal Funds	0.0	0.0	0.0	0.0	0.0	0.0	0.0%
Positions:							
Permanent Full Time	29	30	30	48	66	18	37.5%
Permanent Part Time	0	0	0	0	0	0	0.0%
Non Permanent	5	6	6	3	3	0	0.0%

Change Record Detail - Multiple Scenarios with Descriptions
Department of Public Safety

Component: Alaska Bureau of Investigation (2744)

RDU: Alaska State Troopers (160)

Scenario/Change Record Title	Trans Type	Totals	Personal Services	Travel	Services	Commodities	Capital Outlay	Grants, Benefits	Miscellaneous	Positions		NP
										PFT	PPT	
***** Changes From FY2022 Conference Committee To FY2022 Authorized *****												
FY2022 Conference Committee												
	ConfCom	5,892.1	5,375.3	60.0	403.6	48.0	5.2	0.0	0.0	30	0	6
1004 Gen Fund		5,892.1										
Subtotal		5,892.1	5,375.3	60.0	403.6	48.0	5.2	0.0	0.0	30	0	6
***** Changes From FY2022 Authorized To FY2022 Management Plan *****												
Transfer Admin Assistant 1 (12-1980) from Statewide Drug and Alcohol Enforcement Unit to Support Background Checks												
	Trin	85.7	85.7	0.0	0.0	0.0	0.0	0.0	0.0	1	0	0
1004 Gen Fund		85.7										
Transfer full-time Criminal Justice Technician 1/2 (12-1980), range 12/14, located in Anchorage from Statewide Drug and Alcohol Enforcement Unit. In March of 2021 this position was reclassified from an Administrative Assistant 1. As a result, it is more appropriate for this position to be transferred to the Alaska Bureau of Investigation, where the incumbent will process background check requests in alignment with the Criminal Justice Technician 1/2 job classes.												
Transfer Victim/Witness Paralegal 1 (12-?102) to Alaska State Trooper Detachments												
	Trout	-122.6	-122.6	0.0	0.0	0.0	0.0	0.0	0.0	-1	0	0
1004 Gen Fund		-122.6										
Transfer full-time Victim/Witness Paralegal 1, (12-?102), range 14, located in Anchorage to Alaska State Trooper Detachments in Bethel due to the high incidence of domestic violence, sexual assault, and sexual abuse of a minor cases in Western Alaska.												
Transfer State Trooper (12N19004 & 12N19007) to Alaska State Trooper Detachments												
	Trout	-246.6	-246.6	0.0	0.0	0.0	0.0	0.0	0.0	0	0	-2
1004 Gen Fund		-246.6										
Transfer two full-time non-permanent State Troopers (12-N19004, 12-N19007), range 77, located in Bethel and Fairbanks from the Alaska Bureau of Investigation. These positions focus on providing vital follow-up investigation activities specific to domestic violence, sexual assault, and sexual abuse of minor cases. These follow-up investigative activities enable the compilation of a more thorough report to document cases and support the overall goal of increasing prosecutions and holding offenders accountable.												
Transfer General Investigative Unit Troopers and Sergeants from Alaska State Trooper Detachments												
	Trin	3,587.9	3,587.9	0.0	0.0	0.0	0.0	0.0	0.0	17	0	0
1004 Gen Fund		3,587.9										
Transfer General Investigative Unit (GIU) troopers and sergeants to improve the efficiency by increasing the quality and consistency of statewide investigations. The GIU handles the most serious of crimes.												
This change record will transfer the following positions with funding:												
Full-time Sergeant (12-1097), range 79, located in Soldotna												

Change Record Detail - Multiple Scenarios with Descriptions
Department of Public Safety

Component: Alaska Bureau of Investigation (2744)
RDU: Alaska State Troopers (160)

Scenario/Change Record Title	Trans Type	Totals	Personal Services	Travel	Services	Commodities	Capital Outlay	Grants, Benefits	Miscellaneous	Positions		
										PFT	PPT	NP
Full-time State Trooper (12-1874), range 77, located in Soldotna												
Full-time State Trooper (12-1912), range 77, located in Soldotna												
Full-time State Trooper (12-1913), range 77, located in Soldotna												
Full-time Sergeant (12-6013), range 79, located in Palmer												
Full-time State Trooper (12-1984), range 77, located in Palmer												
Full-time State Trooper (12-1983), range 77, located in Palmer												
Full-time State Trooper (12-1917), range 77, located in Wasilla												
Full-time State Trooper (12-1914), range 77, located in Palmer												
Full-time State Trooper (12-1560), range 77, located in Palmer												
Full-time State Trooper (12-1485), range 77, located in Palmer												
Full-time Sergeant (12-1612), range 79, located in Fairbanks												
Full-time State Trooper (12-1046), range 77, located in Fairbanks												
Full-time State Trooper (12-1065), range 77, located in Fairbanks												
Full-time State Trooper (12-1409), range 77, located in Fairbanks												
Full-time State Trooper (12-1430), range 77, located in Fairbanks												
Full-time State Trooper (12-1981), range 77, located in Fairbanks												
Transfer Lieutenant (12-3085) from Alaska State Trooper Detachment for General Investigate Unit												
Trin		172.9	172.9	0.0	0.0	0.0	0.0	0.0	0.0	1	0	0
1004 Gen Fund		172.9										
Transfer full-time Lieutenant (12-3085), range 24, located in Anchorage from Alaska State Trooper Detachments to oversee the General Investigative Unit and improve the efficiency by increasing the quality and consistency of statewide investigations.												
Align Authority with Anticipated Expenditures												
LIT		0.0	-34.8	0.0	34.8	0.0	0.0	0.0	0.0	0	0	0
Alaska Bureau of Investigation needs to transfer \$34.8 of general fund (1004) authority from personal services to contractual to balance the needs of the component. The component will be able to manage to its authority after this transfer is processed.												
Delete Administrative Assistant 1 (12N20002) Due to Expiration												
PosAdj		0.0	0.0	0.0	0.0	0.0	0.0	0.0	0.0	0	0	-1
Delete non-permanent Administrative Assistant 1 (12N20002), range 12, located in Anchorage, which expired on 6/30/21.												
Subtotal		9,369.4	8,817.8	60.0	438.4	48.0	5.2	0.0	0.0	48	0	3
***** Changes From FY2022 Management Plan To FY2023 Governor *****												
FY2023 Salary and Benefit Adjustments												
SalAdj		21.1	21.1	0.0	0.0	0.0	0.0	0.0	0.0	0	0	0
1004 Gen Fund		21.1										

Change Record Detail - Multiple Scenarios with Descriptions
Department of Public Safety

Component: Alaska Bureau of Investigation (2744)
RDU: Alaska State Troopers (160)

Scenario/Change Record Title	Trans Type	Totals	Personal Services	Travel	Services	Commodities	Capital Outlay	Grants, Benefits	Miscellaneous	Positions		NP
										PFT	PPT	
Includes: FY2023 Law Enforcement Supervisory Unit 3% COLA: \$4.5												
Includes: FY2023 Supervisory Unit 1% COLA: \$2.5												
FY2023 SU BU - Supervisory Employees (SS) 1% COLA: \$0.8												
FY2023 SU BU - Supervisory Employees - Law Enforcement (S2) 3% COLA: \$13.3												
FY2023 PERS Actuarial Rate Adjustment to 24.79% Ch9 SLA2021 (SB55)												
1004 Gen Fund	SalAdj	-291.0	-291.0	0.0	0.0	0.0	0.0	0.0	0.0	0	0	0
Includes: FY2023 Adjustment for PERS ARM Board Approved Rate of 24.79% (from 30.11%): \$-291.0												
FY2023 Public Safety Employees SBS and Risk Management Rate Changes												
1004 Gen Fund	SalAdj	2.9	2.9	0.0	0.0	0.0	0.0	0.0	0.0	0	0	0
FY2023 Change Public Safety Employees (AA) - SBS and Risk Management Rates : \$2.9												
FY2023 General Government Unit SBS and Risk Management Rate Changes												
1004 Gen Fund	SalAdj	0.2	0.2	0.0	0.0	0.0	0.0	0.0	0.0	0	0	0
FY2023 Change General Government Unit (GG, GP, GY, GZ) - SBS, and Risk Management Rates: \$0.2												
FY2023 Supervisory Employees Health Insurance, SBS, and Risk Management Rate Changes												
1004 Gen Fund	SalAdj	5.0	5.0	0.0	0.0	0.0	0.0	0.0	0.0	0	0	0
FY2023 Change Supervisory Employees - Law Enforcement (S2) - Health Insurance from \$1,555 to \$1,685; SBS and Risk Management Rates: \$5.0												
FY2023 Supervisory Employees Health Insurance, SBS, and Risk Management Rate Changes												
1004 Gen Fund	SalAdj	4.5	4.5	0.0	0.0	0.0	0.0	0.0	0.0	0	0	0
FY2023 Change Supervisory Employees (SS) - Health Insurance from \$1,555 to \$1,685; SBS and Risk Management Rates: \$4.5												
FY2023 Public Safety Employees COLA Increase												
1004 Gen Fund	SalAdj	187.9	187.9	0.0	0.0	0.0	0.0	0.0	0.0	0	0	0

Change Record Detail - Multiple Scenarios with Descriptions
Department of Public Safety

Component: Alaska Bureau of Investigation (2744)

RDU: Alaska State Troopers (160)

Scenario/Change Record Title	Trans Type	Totals	Personal Services	Travel	Services	Commodities	Capital Outlay	Grants, Benefits	Miscellaneous	Positions		
										PFT	PPT	NP

FY2023 PSEA BU - (AA) 3% COLA: \$187.9

Add Authority for State Homeland Security Program Award

1007 I/A Rcpts	Inc	250.0	0.0	0.0	50.0	0.0	200.0	0.0	0.0	0	0	0
----------------	-----	-------	-----	-----	------	-----	-------	-----	-----	---	---	---

The Alaska Criminal Intelligence Center (AKCIC) was moved under the Alaska Bureau of Investigation, which has no interagency receipt authority. AKCIC applied for and obtained a grant award through the Department of Military & Veterans Affairs for the State Homeland Security Program; this is anticipated to be ongoing. The authority allows this to be a budgeted Reimbursable Service Agreement (RSA) and ease the administrative process.

Add Positions to Increase Staffing and Operational Capacity within the Alaska Bureau of Investigation

1004 Gen Fund	Inc	395.5	319.5	0.0	56.0	20.0	0.0	0.0	0.0	4	0	0
---------------	-----	-------	-------	-----	------	------	-----	-----	-----	---	---	---

Add four new positions to increase staffing and operational capacity to an adequate level to address demands for statewide law enforcement services. The Alaska crime rate continues to increase with many locations having little to no law enforcement staff or support requiring Troopers to respond to calls in that area. Current staffing levels create delays when responding to calls regarding domestic violence, sexual assaults, drug related crimes, murder, and various other reported crimes. Several years ago, the US Attorney declared a law enforcement emergency in rural Alaska due to insufficient or lack of law enforcement staffing and support. The Department has made progress in staffing in rural Alaska; however, additional efforts are needed. This increase in authority will assist with these issues and bring operational capacity to more appropriate staffing levels based on statewide needs and allow the ability to respond to calls in a more appropriate timeframe.

The mission critical work that is being done by the Alaska Bureau of Investigation can't been done without the assistance of administrative and support staff within the Department. This last year an effort was made to evaluate the staffing levels of administrative and support staff within the Department, and it was found that several areas were severally understaffed. This authority will add administrative and support staff to strategic locations around the state to assist in the mission critical work being completed within Alaska State Troopers.

The following positions are added:

- One Criminal Justice Technician 1, range 12, located in Anchorage, to support the Missing Persons Clearinghouse
- One Criminal Justice Technician 1/2, range 12/14, located in Anchorage, to support the Child Abuse Investigative Unit
- One Office Assistant 3, range 11, located in Anchorage to support the rural Bethel unit
- One Office Assistant 2, range 10, located in Anchorage to support public information requests

Add Positions for the Digital Forensics Laboratory

1004 Gen Fund	Inc	234.9	174.4	0.0	28.0	32.5	0.0	0.0	0.0	2	0	0
---------------	-----	-------	-------	-----	------	------	-----	-----	-----	---	---	---

Add two Criminal Intelligence Analyst 1 positions (12-#196, 12-#197), range 14, located in Anchorage to maintain the workload within the Digital Forensics Laboratory (DFL) which is currently staffed with a civilian supervisor and two technicians.

Most of the DFL's digital forensic workstations (ultra-powerful computers) are at the end of their useful life, with four being eight years old. The amount of data from an average suspect computer has increased four times and the average cell phone has increased 10 times in the last eight years. According to Intel, their

Change Record Detail - Multiple Scenarios with Descriptions
Department of Public Safety

Component: Alaska Bureau of Investigation (2744)

RDU: Alaska State Troopers (160)

Scenario/Change Record Title	Trans Type	Totals	Personal Services	Travel	Services	Commodities	Capital Outlay	Grants, Benefits	Miscellaneous	Positions		NP
										PFT	PPT	
processor's processing power has increased 275% over the last eight years. This request adds two additional workstations.												
Transfer General Investigative Unit from Alaska State Trooper Detachments for Reorganization Initiative												
1004 Gen Fund	Trin	2,409.8	2,409.8	0.0	0.0	0.0	0.0	0.0	0.0	11	0	0
Transfer General Investigative Unit (GIU) troopers and sergeants to improve the efficiency by increasing the quality and consistency of statewide investigations. The GIU handles the most serious of crimes.												
The following positions will transfer with funding:												
Full-time Sergeant (12-1415), range 79, located in Bethel												
Full-time State Trooper (12-1371), range 77, located in Bethel												
Full-time State Trooper (12-4419), range 77, moved from Saint Michaels to Bethel												
Full-time State Trooper (12-2105), range 77, moved from Saint Michaels to Bethel												
Full-time State Trooper (12-2108), range 77, moved from Ambler to Bethel												
Full-time State Trooper (12-2107), range 77, moved from Ambler to King Salmon												
Full-time State Trooper (12-2103), range 77, located in Nome												
Full-time State Trooper (12-2110), range 77, located in Kotzebue												
Full-time Office Assistant 3 (12-1402), range 11, located in Palmer												
Full-time Office Assistant 3 (12-1621), range 11, located in Fairbanks												
Full-time Forensic Technician 2 (12-4222), range 15, located in Fairbanks												
Transfer Program Coordinator 2 (12-1972) from Alaska State Trooper Detachments to Support Missing Persons Program												
1004 Gen Fund	Trin	143.2	143.2	0.0	0.0	0.0	0.0	0.0	0.0	1	0	0
Transfer full-time Program Coordinator 2 (12-1972), range 20, located in Anchorage, to Alaska Bureau of Investigation to give the position access to needed resources and align the tasks and duties of the position.												
Align Authority with Anticipated Expenditures												
	LIT	0.0	-289.0	0.0	289.0	0.0	0.0	0.0	0.0	0	0	0
Transfer authority from personal services to services for anticipated contractual costs. The remaining authority is sufficient to cover anticipated expenditures.												
Totals		12,733.4	11,506.3	60.0	861.4	100.5	205.2	0.0	0.0	66	0	3

Line Item Detail (1676)
Department of Public Safety
Travel

Component: Alaska Bureau of Investigation (2744)

Line Number	Line Name		FY2021 Actuals	FY2022 Management Plan	FY2023 Governor
2000	Travel		81.6	60.0	60.0
Object Class	Servicing Agency	Explanation	FY2021 Actuals	FY2022 Management Plan	FY2023 Governor
2000 Travel Detail Totals			81.6	60.0	60.0
2000	In-State Employee Travel	Transportation for investigations around the state. This often results in obtaining additional evidence and follow-up arrests. Travel is often in response to calls for assistance from local law enforcement agencies.	73.5	32.5	32.5
2002	Out of State Employee Travel	Out of state travel is occasionally incurred during investigation of persons or organizations committing crimes in Alaska; as well as for training and crime conferences for investigators.	8.1	27.5	27.5

Line Item Detail (1676)
Department of Public Safety
Services

Component: Alaska Bureau of Investigation (2744)

Line Number	Line Name		FY2021 Actuals	FY2022 Management Plan	FY2023 Governor
3000	Services		880.7	438.4	861.4
Object Class	Servicing Agency	Explanation	FY2021 Actuals	FY2022 Management Plan	FY2023 Governor
3000 Services Detail Totals			880.7	438.4	861.4
3000	Education Services	Registration/tuition for employee development through seminars, crime analysis courses, required law enforcement training, rifle range fees to meet yearly qualifications, and membership in law enforcement organizations.	44.0	5.0	10.0
3001	Financial Services	Penalties, fines and interest.	4.2	5.0	5.0
3002	Legal and Judicial Services	Legal and transcription services and case costs.	17.2	5.0	18.0
3003	Information Technology	Consulting services and software licenses for technology projects. Microsoft Exchange & ARMS Maintenance Agreement.	225.1	29.3	114.6
3004	Telecommunications	Long distance, local, cellular, and basic telephone equipment purchases.	40.2	41.0	45.0
3006	Delivery Services	Postage, freight, and courier service.	2.0	3.0	3.0
3008	Utilities	Utility costs for trooper posts, storage, and offices including natural gas, heating oil, electricity, water and sewer, and waste disposal. Including other disposal and shredding services.	77.5	31.4	35.0
3009	Structure/Infrastructure/Land	Snow removal, janitorial services, land & office rentals/leases, room & space rentals (conferences and trainings), and evidence storage.	25.9	5.0	30.0

Line Item Detail (1676)
Department of Public Safety
Services

Component: Alaska Bureau of Investigation (2744)

Object Class		Servicing Agency	Explanation	FY2021 Actuals	FY2022 Management Plan	FY2023 Governor
3000 Services Detail Totals				880.7	438.4	861.4
3010	Equipment/Machinery		Repair and maintenance of communication equipment, electronics, and law enforcement and surveillance equipment.	4.2	4.5	4.5
3011	Other Services		Printing, copier services, honorariums for presenters/trainers. Law enforcement services, and investigative expenses, such as, security system for evidence rooms and crime scene photo processing. Commissioned sales for the State Travel Office.	6.6	7.0	7.0
3017	Inter-Agency Information Technology Non-Telecommunications	Admin - Department-wide	Non-telecommunication (mainframe, computer support, sponsored agencies, and PVN).	133.3	100.0	140.0
3017	Inter-Agency Information Technology Non-Telecommunications	PubSaf - Information Systems (3199)	Non-telecommunications (LAN/WAN & APSIN).	10.2	10.0	18.0
3018	Inter-Agency Information Technology Telecommunications	Admin - Department-wide	Telecommunication support services (EPR & Basic Phones).	7.8	11.8	15.0
3020	Inter-Agency Building Maintenance	Trans - Department-wide	Building and yard maintenance.	6.0	6.0	6.0
3021	Inter-Agency Mail	Admin - Department-wide	Central mail service (I/A transfer to DOA, Shared Services).	10.2	1.3	1.3
3021	Inter-Agency Mail	PubSaf - AST Detachments (2325)	DPS HQ mailroom services.	0.0	1.0	9.6
3022	Inter-Agency Human Resources	Admin - Department-wide	HR Personnel Support.	17.6	15.0	32.0
3023	Inter-Agency Building Leases	Admin - Department-wide	DOA managed building leases.	41.9	24.6	50.0
3023	Inter-Agency Building Leases	Trans - Department-wide	State-owned building leases	2.0	5.0	40.0
3024	Inter-Agency Legal	Law - Department-wide	Legal Services.	8.4	9.0	10.0
3026	Inter-Agency Insurance	Admin - Department-wide	Risk Management property and overhead insurance.	6.0	10.0	10.0
3027	Inter-Agency Financial	Admin - Department-wide	IRIS HRM/ALDER/IRIS financial support	3.3	5.0	11.0

Line Item Detail (1676)
Department of Public Safety
Services

Component: Alaska Bureau of Investigation (2744)

Object Class		Servicing Agency	Explanation	FY2021 Actuals	FY2022 Management Plan	FY2023 Governor
3000 Services Detail Totals				880.7	438.4	861.4
3028	Inter-Agency Americans with Disabilities Act Compliance	Admin - Department-wide	Americans with Disabilities Act (ADA) allocation for services.	0.3	0.5	0.5
3037	State Equipment Fleet	Trans - Department-wide	State Equipment Fleet costs, such as, fuel, fixed costs for asset maintenance, maintenance and repair services not included as a fixed asset cost, fixed cost services for equipment replacement, unallowable A87 expenses, and repairs and maintenance services due to accident damage.	141.1	100.0	110.0
3038	Inter-Agency Management/Consulting		Interdepartmental service contracts.	45.7	0.0	0.0
3038	Inter-Agency Management/Consulting	Admin - Department-wide	Shared Services of Alaska travel and account payables support.	0.0	1.0	50.0
3038	Inter-Agency Management/Consulting	PubSaf - Administrative Services (525)	DPS Admin Services cost allocation.	0.0	1.0	45.8
3038	Inter-Agency Management/Consulting	PubSaf - Commissioner's Office (523)	DPS Commissioner's Office cost allocation, DPS Office of Professional Services cost allocation.	0.0	1.0	40.1

Line Item Detail (1676)
Department of Public Safety
Commodities

Component: Alaska Bureau of Investigation (2744)

Line Number	Line Name		FY2021 Actuals	FY2022 Management Plan	FY2023 Governor
4000	Commodities		52.4	48.0	100.5
Object Class	Servicing Agency	Explanation	FY2021 Actuals	FY2022 Management Plan	FY2023 Governor
4000 Commodities Detail Totals			52.4	48.0	100.5
4000	Business	Business, office, photographic, computer supplies and educational subscriptions.	42.2	36.0	51.0
4002	Household/Institutional	Clothing, uniforms, cleaning, food and non-food supplies.	0.8	1.0	1.0
4003	Scientific and Medical	Scientific and medical purchases for investigations.	0.0	1.0	1.0
4004	Safety	Law enforcement supplies, communications, ammunition, gun cleaning supplies, protective vests, first aid supplies, road flares, and other safety supplies.	6.8	5.0	10.0
4004	Safety	Add two additional workstations for the Digital Forensics Laboratory	0.0	0.0	32.5
4011	Electrical		1.0	0.0	0.0
4015	Parts and Supplies	Parts and supplies for investigations.	1.6	5.0	5.0

Line Item Detail (1676)
Department of Public Safety
Capital Outlay

Component: Alaska Bureau of Investigation (2744)

Line Number	Line Name		FY2021 Actuals	FY2022 Management Plan	FY2023 Governor
5000	Capital Outlay		0.0	5.2	205.2
Object Class	Servicing Agency	Explanation	FY2021 Actuals	FY2022 Management Plan	FY2023 Governor
5000 Capital Outlay Detail Totals			0.0	5.2	205.2
5004	Equipment	Equipment, electronics, communications, surveillance, and other equipment with cost of \$5,000 or greater and life greater than one year.	0.0	5.2	205.2

Revenue Detail (1681)
Department of Public Safety

Component: Alaska Bureau of Investigation (2744)

Revenue Type (OMB Fund Code) Revenue Source	Component	Comment	FY2021 Actuals	FY2022 Management Plan	FY2023 Governor
5061 CIP Rcpts (1061 CIP Rcpts)			177.3	0.0	0.0
5351 Capital Improvement Project Inter-Agency			177.3	0.0	0.0

Inter-Agency Services (1682)
Department of Public Safety

Component: Alaska Bureau of Investigation (2744)

				FY2021 Actuals	FY2022 Management Plan	FY2023 Governor
Component Totals				388.1	302.2	589.3
With Department of Administration				220.4	169.2	309.8
With Department of Public Safety				10.2	13.0	113.5
With Department of Transportation/Public Facilities				149.1	111.0	156.0
With Department of Law				8.4	9.0	10.0
Object Class	Servicing Agency	Explanation	FY2021 Actuals	FY2022 Management Plan	FY2023 Governor	
3017	Inter-Agency Information Technology Non-Telecommunications	Admin - Department-wide Non-telecommunication (mainframe, computer support, sponsored agencies, and PVN).	133.3	100.0	140.0	
3017	Inter-Agency Information Technology Non-Telecommunications	PubSaf - Information Systems (3199) Non-telecommunications (LAN/WAN & APSIN).	10.2	10.0	18.0	
3018	Inter-Agency Information Technology Telecommunications	Admin - Department-wide Telecommunication support services (EPR & Basic Phones).	7.8	11.8	15.0	
3020	Inter-Agency Building Maintenance	Trans - Department-wide Building and yard maintenance.	6.0	6.0	6.0	
3021	Inter-Agency Mail	Admin - Department-wide Central mail service (I/A transfer to DOA, Shared Services).	10.2	1.3	1.3	
3021	Inter-Agency Mail	PubSaf - AST Detachments (2325) DPS HQ mailroom services.	0.0	1.0	9.6	
3022	Inter-Agency Human Resources	Admin - Department-wide HR Personnel Support.	17.6	15.0	32.0	
3023	Inter-Agency Building Leases	Admin - Department-wide DOA managed building leases.	41.9	24.6	50.0	
3023	Inter-Agency Building Leases	Trans - Department-wide State-owned building leases	2.0	5.0	40.0	
3024	Inter-Agency Legal	Law - Department-wide Legal Services.	8.4	9.0	10.0	
3026	Inter-Agency Insurance	Admin - Department-wide Risk Management property and overhead insurance.	6.0	10.0	10.0	
3027	Inter-Agency Financial	Admin - Department-wide IRIS HRM/ALDER/IRIS financial support	3.3	5.0	11.0	
3028	Inter-Agency Americans with Disabilities Act Compliance	Admin - Department-wide Americans with Disabilities Act (ADA) allocation for services.	0.3	0.5	0.5	
3037	State Equipment Fleet	Trans - Department-wide State Equipment Fleet costs, such as, fuel, fixed costs for asset	141.1	100.0	110.0	

Inter-Agency Services (1682)
Department of Public Safety

Component: Alaska Bureau of Investigation (2744)

Object Class		Servicing Agency	Explanation	FY2021 Actuals	FY2022 Management Plan	FY2023 Governor
			maintenance, maintenance and repair services not included as a fixed asset cost, fixed cost services for equipment replacement, unallowable A87 expenses, and repairs and maintenance services due to accident damage.			
3038	Inter-Agency Management/Consulting	Admin - Department-wide	Shared Services of Alaska travel and account payables support.	0.0	1.0	50.0
3038	Inter-Agency Management/Consulting	PubSaf - Administrative Services (525)	DPS Admin Services cost allocation.	0.0	1.0	45.8
3038	Inter-Agency Management/Consulting	PubSaf - Commissioner's Office (523)	DPS Commissioner's Office cost allocation, DPS Office of Professional Services cost allocation.	0.0	1.0	40.1

Personal Services Expenditure Detail
Department of Public Safety

Scenario: FY2023 Governor (18673)
Component: Alaska Bureau of Investigation (2744)
RDU: Alaska State Troopers (160)

PCN	Job Class Title	Time Status	Retire Code	Barg Unit	Location	Salary Sched	Range / Step	Comp Months	Split / Count	Annual Salaries	COLA	Premium Pay	Annual Benefits	Total Costs	UGF Amount
12-#196	Crim Int Any 1	FT	A	GG	Anchorage	100	14A / B	12.0		46,254	0	3,499	38,887	88,640	88,640
12-#197	Crim Int Any 1	FT	A	GG	Anchorage	100	14A / B	12.0		46,254	0	3,499	38,887	88,640	88,640
12-#198	Office Assistant 2	FT	A	GG	Anchorage	100	10A / B	12.0		36,017	0	2,727	34,438	73,182	73,182
12-#199	Office Assistant 3	FT	A	GG	Anchorage	100	11B / C	12.0		39,439	0	2,986	35,925	78,350	78,350
12-#200	Criminal Justice Technician 2	FT	A	GG	Wasilla	100	14B / C	12.0		47,834	0	3,616	39,572	91,022	91,022
12-#201	Criminal Justice Technician 1	FT	A	GG	Anchorage	100	12B / C	12.0		41,954	0	3,175	37,018	82,147	82,147
12-1046	State Trooper	FT	P	AA	Fairbanks	99	77R	12.0		149,781	6,909	21,718	86,460	264,868	264,868
12-1065	State Trooper	FT	P	AA	Fairbanks	99	77E / F	12.0		105,915	4,610	3,532	62,905	176,962	176,962
12-1097	Sergeant DPS	FT	P	AA	Soldotna	100	79P	12.0		145,413	6,359	12,445	81,784	246,001	246,001
12-1141	State Trooper	FT	P	AA	Wasilla	99	77O / P	12.0		131,613	6,092	19,606	79,508	236,819	236,819
12-1217	Sergeant DPS	FT	P	AA	Wasilla	100	79O	12.0		140,150	6,483	20,776	82,835	250,244	250,244
12-1253	State Trooper	FT	P	AA	Wasilla	99	77M / N	12.0		124,920	5,435	4,100	70,814	205,269	205,269
12-1339	State Trooper	FT	P	AA	Wasilla	99	77O	12.0		135,075	5,722	756	73,567	215,120	215,120
12-1355	Lieutenant DPS	FT	P	S2	Anchorage	99	24R / S	12.0		183,490	7,422	756	92,534	284,202	284,202
12-1366	Criminal Justice Technician 2	FT	A	GP	Anchorage	100	14R / S	12.0		78,258	0	0	50,405	128,663	128,663
12-1368	Administrative Assistant 2	FT	A	SS	Anchorage	500	14A	12.0		49,275	692	0	40,293	90,260	90,260
12-1371	State Trooper	FT	P	AA	Bethel	150	77C / D	12.0		135,158	6,360	22,728	81,793	246,039	246,039
12-1381	State Trooper	FT	P	AA	Anchorage	99	77L	12.0		120,952	5,494	9,487	71,388	207,321	207,321
12-1387	Sergeant DPS	FT	P	AA	Anchorage	99	79N / O	12.0		137,655	5,969	10,506	78,460	232,590	232,590
12-1402	Office Assistant 3	FT	A	GP	Palmer	100	11J / K	12.0		49,153	0	0	38,644	87,797	87,797
12-1409	State Trooper	FT	P	AA	Fairbanks	103	77C / D	12.0		92,810	4,306	9,423	59,990	166,529	166,529
12-1415	Sergeant DPS	FT	P	AA	Bethel	99	79N / O	12.0		217,139	9,949	29,837	112,333	369,258	369,258
12-1430	State Trooper	FT	P	AA	Fairbanks	99	77J / K	12.0		115,209	5,290	10,376	69,426	200,301	200,301
12-1439	State Trooper	FT	P	AA	Anchorage	99	77R	12.0		145,413	6,311	11,253	81,375	244,352	244,352
12-1452	State Trooper	FT	P	AA	Anchorage	99	77N	12.0		130,187	5,995	12,465	76,323	224,970	224,970
12-1485	State Trooper	FT	P	AA	Palmer	99	77F	12.0		104,395	4,889	11,669	65,579	186,532	186,532
12-1498	State Trooper	FT	P	AA	Anchorage	100	77C / D	12.0		90,106	4,101	7,254	58,020	159,481	159,481
12-1555	Criminal Justice Technician 2	FT	A	GP	Anchorage	100	14E / F	12.0		54,589	0	0	40,841	95,430	95,430
12-1560	State Trooper	FT	P	AA	Palmer	99	77N / O	12.0		134,464	5,910	12,213	77,949	230,536	230,536
12-1597	State Trooper	FT	P	AA	Anchorage	100	77C / D	12.0		90,106	4,101	7,254	58,020	159,481	159,481
12-1612	Sergeant DPS	FT	P	AA	Fairbanks	103	79O / P	12.0		147,202	6,429	12,380	82,375	248,386	248,386
12-1616	State Trooper	FT	P	AA	Anchorage	99	77N / O	12.0		131,409	5,963	10,154	75,883	223,409	223,409
12-1621	Office Assistant 3	FT	A	GP	Fairbanks	103	11B / C	12.0		41,672	0	0	35,621	77,293	77,293
12-1628	Office Assistant 2	FT	A	GP	Anchorage	99	10Q	12.0		56,920	0	0	41,783	98,703	98,703
12-1634	Crim Int Any 2	FT	A	GP	Anchorage	100	17C / D	12.0		61,536	0	0	43,648	105,184	105,184

Note: If a position is split, an asterisk (*) will appear in the Split/Count column. If the split position is also counted in the component, two asterisks (**) will appear in this column. [No valid job title] appearing in the Job Class Title indicates that the PCN has an invalid class code or invalid range for the class code effective date of this scenario.

Personal Services Expenditure Detail
Department of Public Safety

Scenario: FY2023 Governor (18673)
Component: Alaska Bureau of Investigation (2744)
RDU: Alaska State Troopers (160)

PCN	Job Class Title	Time Status	Retire Code	Barg Unit	Location	Salary Sched	Range / Step	Comp Months	Split / Count	Annual Salaries	COLA	Premium Pay	Annual Benefits	Total Costs	UGF Amount
12-1711	Crim Int Any 2	FT	A	GP	Anchorage	100	17E / F	12.0		66,905	0	0	45,818	112,723	112,723
12-1777	Crim Int Any 3	FT	A	SS	Anchorage	100	19K	12.0		88,816	1,247	0	56,272	146,335	146,335
12-1851	Crim Int Any 2	FT	A	GP	Anchorage	100	17F / G	12.0		67,463	0	0	46,043	113,506	113,506
12-1874	State Trooper	FT	P	AA	Soldotna	99	77K / L	12.0		115,528	5,325	10,888	69,762	201,503	201,503
12-1896	State Trooper	FT	P	AA	Wasilla	100	77C / D	12.0		90,106	4,420	14,834	61,084	170,444	170,444
12-1897	State Trooper	FT	P	AA	Wasilla	99	77J	12.0		108,306	5,283	17,122	69,363	200,074	200,074
12-1912	State Trooper	FT	P	AA	Soldotna	99	77M	12.0		120,952	5,565	11,155	72,062	209,734	209,734
12-1913	State Trooper	FT	P	AA	Soldotna	99	77L / M	12.0		121,204	5,254	3,532	69,083	199,073	199,073
12-1914	State Trooper	FT	P	AA	Palmer	99	77N / O	12.0		122,463	5,620	10,953	72,591	211,627	211,627
12-1917	State Trooper	FT	P	AA	Wasilla	99	77O	12.0		130,187	6,035	19,615	79,022	234,859	234,859
12-1918	Sergeant DPS	FT	P	AA	Anchorage	99	79N	12.0		140,150	6,223	14,339	80,629	241,341	241,341
12-1972	Program Coordinator 2	FT	A	GP	Anchorage	100	20J	12.0		88,589	0	0	54,580	143,169	143,169
12-1980	Criminal Justice Technician 2	FT	A	GP	Anchorage	100	14D / E	12.0		52,549	0	0	40,016	92,565	92,565
12-1981	State Trooper	FT	P	AA	Fairbanks	99	77O	12.0		134,098	5,923	11,962	77,700	229,683	229,683
12-1983	State Trooper	FT	P	AA	Palmer	99	77L / M	12.0		113,241	5,483	16,915	71,273	206,912	206,912
12-1984	State Trooper	FT	P	AA	Palmer	99	77M	12.0		125,486	5,767	11,433	74,006	216,692	216,692
12-1985	State Trooper	FT	P	AA	Anchorage	100	77E / F	12.0		96,697	4,389	7,497	60,782	169,365	169,365
12-2009	State Trooper	FT	P	AA	Anchorage	100	77C / D	12.0		90,106	4,101	7,254	58,020	159,481	159,481
12-2018	Crim Int Any 1	FT	A	GP	Anchorage	100	14J / K	12.0		59,189	0	0	42,700	101,889	101,889
12-2043	Crim Int Any 1	FT	A	GP	Anchorage	100	14A / B	12.0		47,483	0	0	37,969	85,452	85,452
12-2103	State Trooper	FT	A	AA	Nome	137	77C / D	12.0		123,448	5,851	15,445	74,804	219,548	219,548
12-2105	State Trooper	FT	A	AA	Bethel	150	77C / D	12.0		135,158	6,123	16,838	79,774	237,893	237,893
12-2107	State Trooper	FT	A	AA	King Salmon	150	77C / D	12.0		135,158	6,123	16,838	79,774	237,893	237,893
12-2108	State Trooper	FT	A	AA	Bethel	150	77C / D	12.0		135,158	6,123	16,838	79,774	237,893	237,893
12-2110	State Trooper	FT	A	AA	Kotzebue	160	77C / D	12.0		144,165	6,529	17,910	83,229	251,833	251,833
12-2111	Data Processing Manager 2	FT	A	SS	Anchorage	100	23D / E	12.0		104,345	1,465	0	62,547	168,357	168,357
12-3006	Lieutenant DPS	FT	P	S2	Anchorage	99	24M / N	12.0		154,970	6,483	5,955	84,539	251,947	251,947
12-3085	Lieutenant DPS	FT	P	S2	Anchorage	99	24N	12.0		157,225	6,364	756	83,530	247,875	247,875
12-4222	Forensic Technician 2	FT	A	GP	Fairbanks	103	15M	12.0		71,721	0	4,376	49,532	125,629	125,629
12-4419	State Trooper	FT	A	AA	Bethel	150	77C / D	12.0		135,158	6,123	16,838	79,774	237,893	237,893
12-6013	Sergeant DPS	FT	P	AA	Palmer	100	79L / M	12.0		129,325	5,906	10,874	75,332	221,437	221,437
12-N09017	Corporal DPS	NP	N	AA	Anchorage	100	78B	12.0		90,106	3,074	756	11,603	105,539	105,539
12-N17006	State Trooper	NP	N	AA	Anchorage	100	77D	12.0		90,106	3,074	756	11,603	105,539	105,539
12-N20003	State Trooper	NP	N	AA	Anchorage	100	77F	12.0		96,990	3,281	0	12,386	112,657	112,657

Note: If a position is split, an asterisk (*) will appear in the Split/Count column. If the split position is also counted in the component, two asterisks (**) will appear in this column. [No valid job title] appearing in the Job Class Title indicates that the PCN has an invalid class code or invalid range for the class code effective date of this scenario.

Personal Services Expenditure Detail
Department of Public Safety

Scenario: FY2023 Governor (18673)
Component: Alaska Bureau of Investigation (2744)
RDU: Alaska State Troopers (160)

PCN	Job Class Title	Time Status	Retire Code	Barg Unit	Location	Salary Sched	Range / Step	Comp Months	Split / Count	Annual Salaries	COLA	Premium Pay	Annual Benefits	Total Costs	UGF Amount
		Total Positions	New	Deleted										Total Salary Costs:	7,240,268
														Total COLA:	267,945
	Full Time Positions:	66	6	0										Total Premium Pay:	561,869
	Part Time Positions:	0	0	0										Total Benefits:	4,302,259
	Non Permanent Positions:	3	0	0											
	Positions in Component:	69	6	0											
	Total Component Months:	828.0													
														Total Pre-Vacancy:	12,372,341
														Minus Vacancy Adjustment of 7.00%:	(866,064)
														Total Post-Vacancy:	11,506,277
														Plus Lump Sum Premium Pay:	0
														Personal Services Line 100:	11,506,277

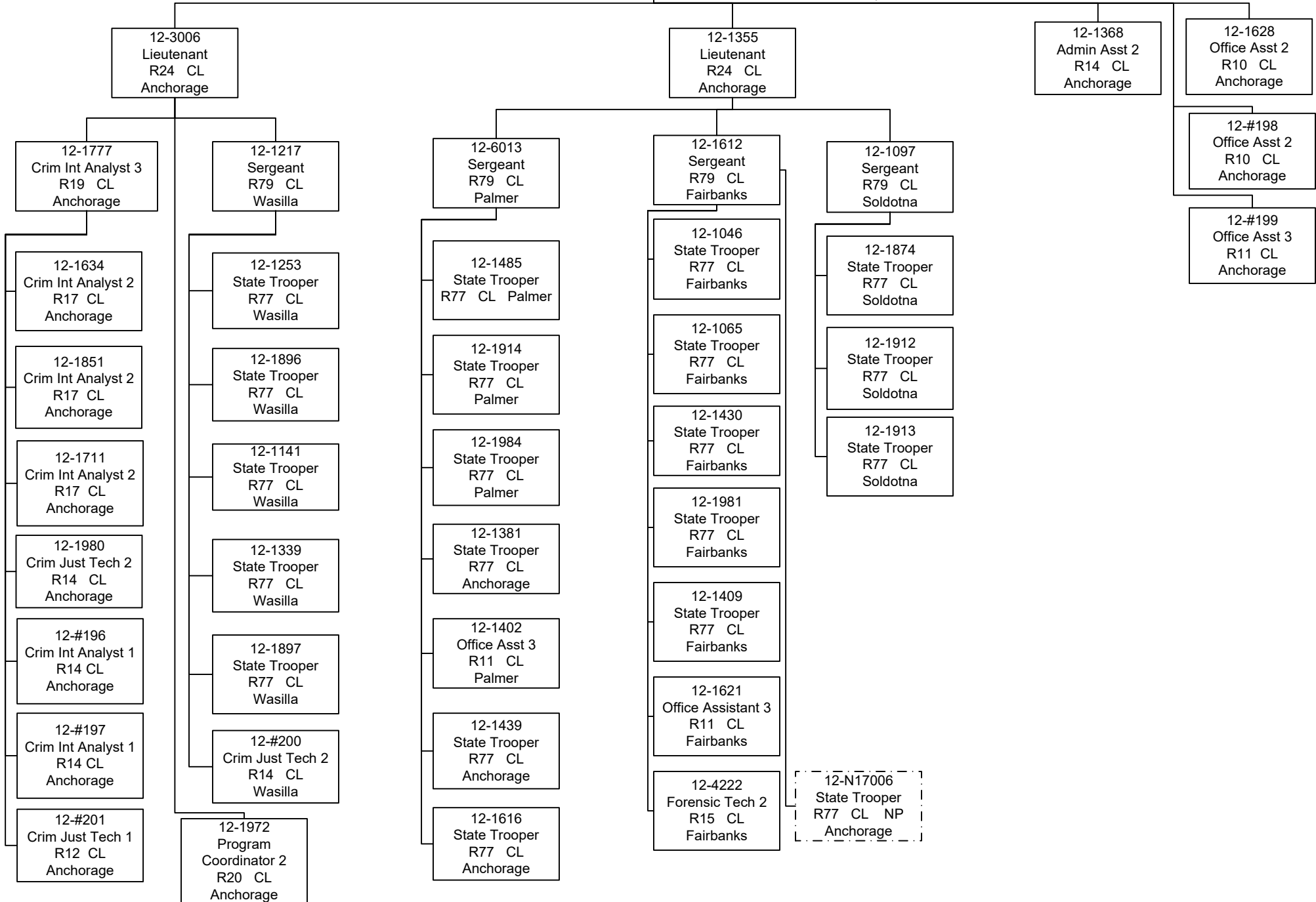
PCN Funding Sources:	Pre-Vacancy	Post-Vacancy	Percent
1004 General Fund Receipts	12,372,341	11,506,277	100.00%
Total PCN Funding:	12,372,341	11,506,277	100.00%

Note: If a position is split, an asterisk (*) will appear in the Split/Count column. If the split position is also counted in the component, two asterisks (**) will appear in this column. [No valid job title] appearing in the Job Class Title indicates that the PCN has an invalid class code or invalid range for the class code effective date of this scenario.

Department of Public Safety
 RDU: Alaska State Troopers (P200)
 Component: Alaska Bureau of Investigation (P280)
 FY2023 Governor's Budget
 Position Counts: 66 PFT, 3 NP

12-1991*
 Captain
 R26 CL
 Anchorage

*Position is budgeted in SW
 Drug and Alcohol
 Enforcement Unit component



RDU: Alaska State Troopers (P200)
 Component: Alaska Bureau of Investigation (P280)
 FY2023 Governor's Budget
 Position Totals: 60 PFT, 3 NP

State of Alaska
 Department of Public Safety

*Position is budgeted in SW Drug and Alcohol Enforcement Unit component

