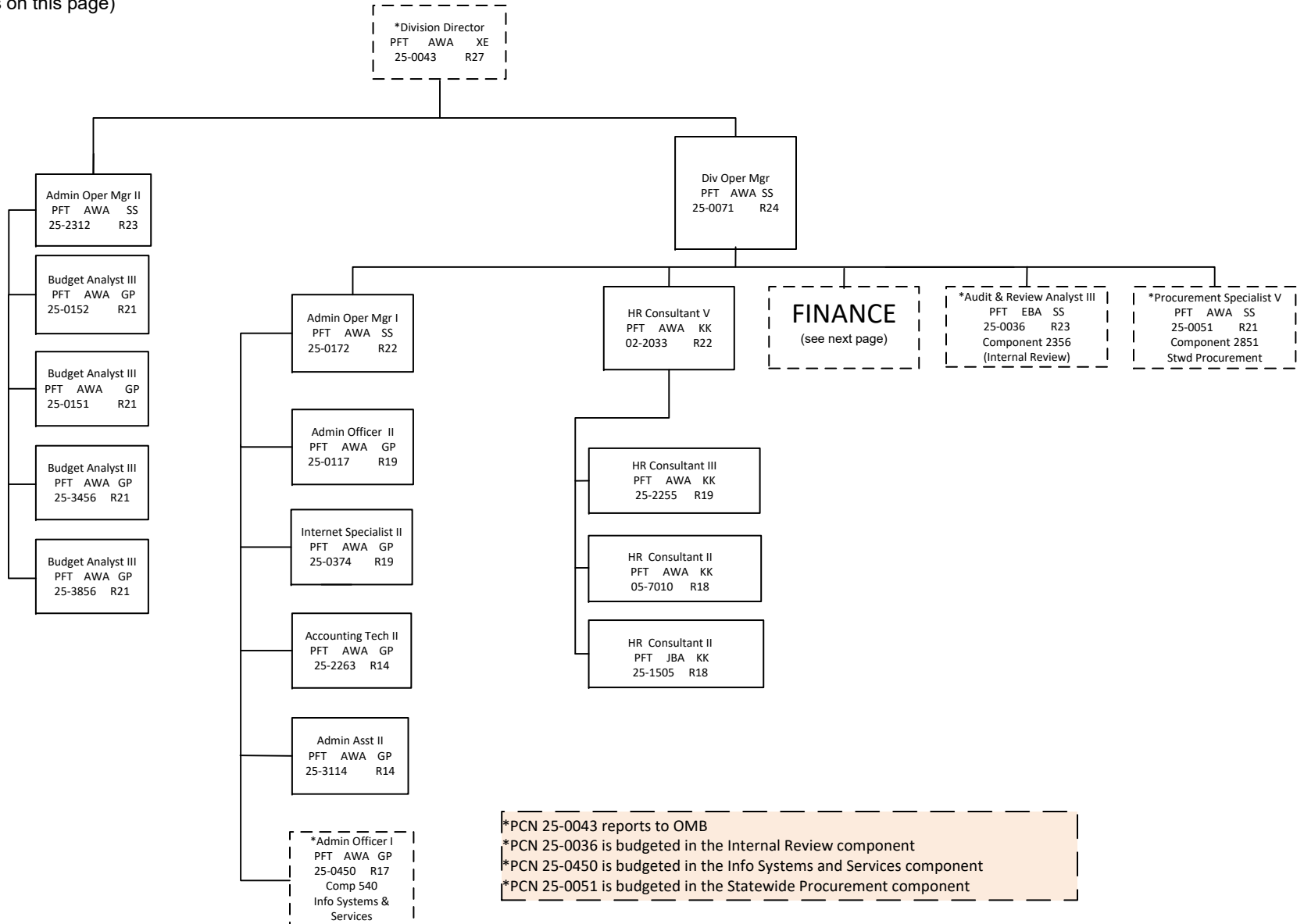


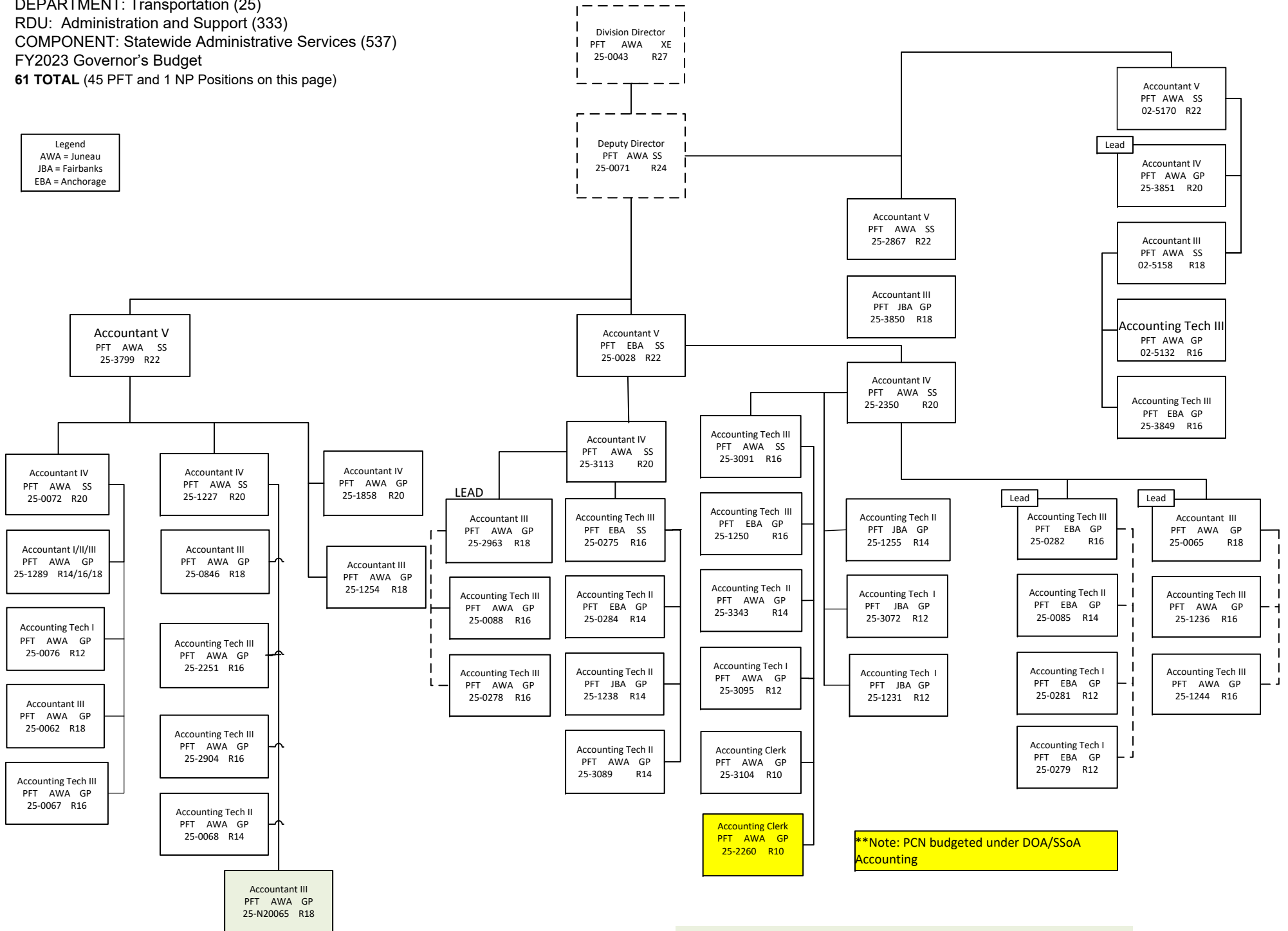
DEPARTMENT: Transportation (25)
 RDU: Administration and Support (333)
 COMPONENT: Statewide Administrative Services (537)
 FY2023 Governor's Budget
61 PFT (15 PFT Positions on this page)

Legend
 AWA = Juneau
 JBA = Fairbanks
 EBA = Anchorage



DEPARTMENT: Transportation (25)
 RDU: Administration and Support (333)
 COMPONENT: Statewide Administrative Services (537)
 FY2023 Governor's Budget
61 TOTAL (45 PFT and 1 NP Positions on this page)

Legend
 AWA = Juneau
 JBA = Fairbanks
 EBA = Anchorage



****Note: PCN budgeted under DOA/SSoA Accounting**

Note: Budgeted Long-Term Non-Perm