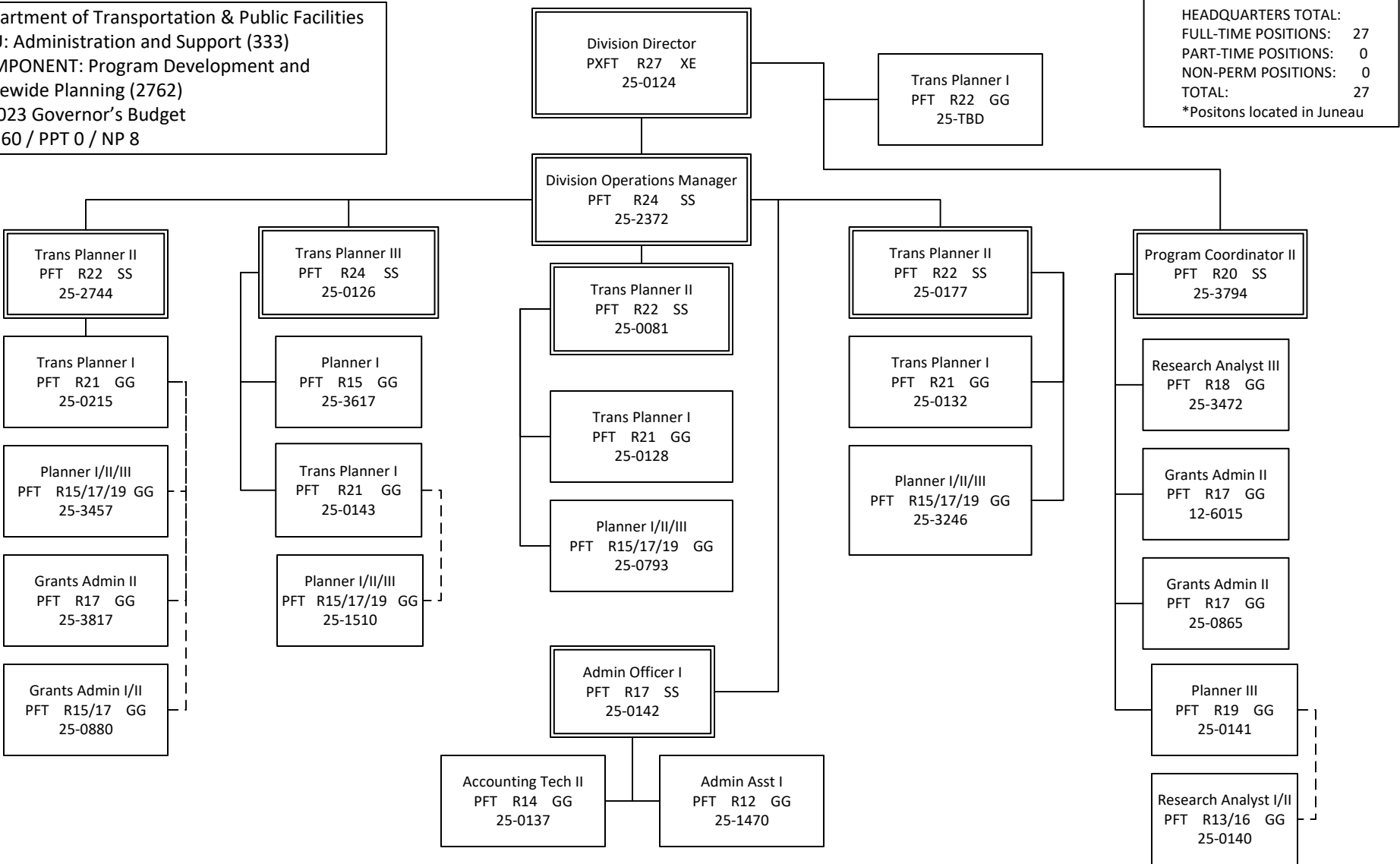


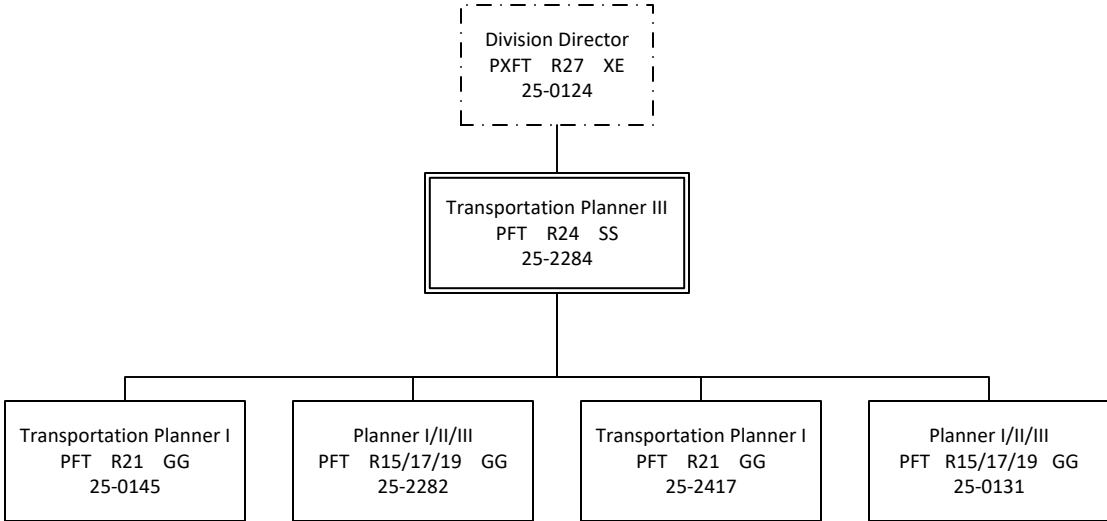
Department of Transportation & Public Facilities  
 RDU: Administration and Support (333)  
 COMPONENT: Program Development and  
 Statewide Planning (2762)  
 FY2023 Governor's Budget  
 PFT 60 / PPT 0 / NP 8



HEADQUARTERS TOTAL:  
 FULL-TIME POSITIONS: 27  
 PART-TIME POSITIONS: 0  
 NON-PERM POSITIONS: 0  
 TOTAL: 27  
 \*Positons located in Juneau

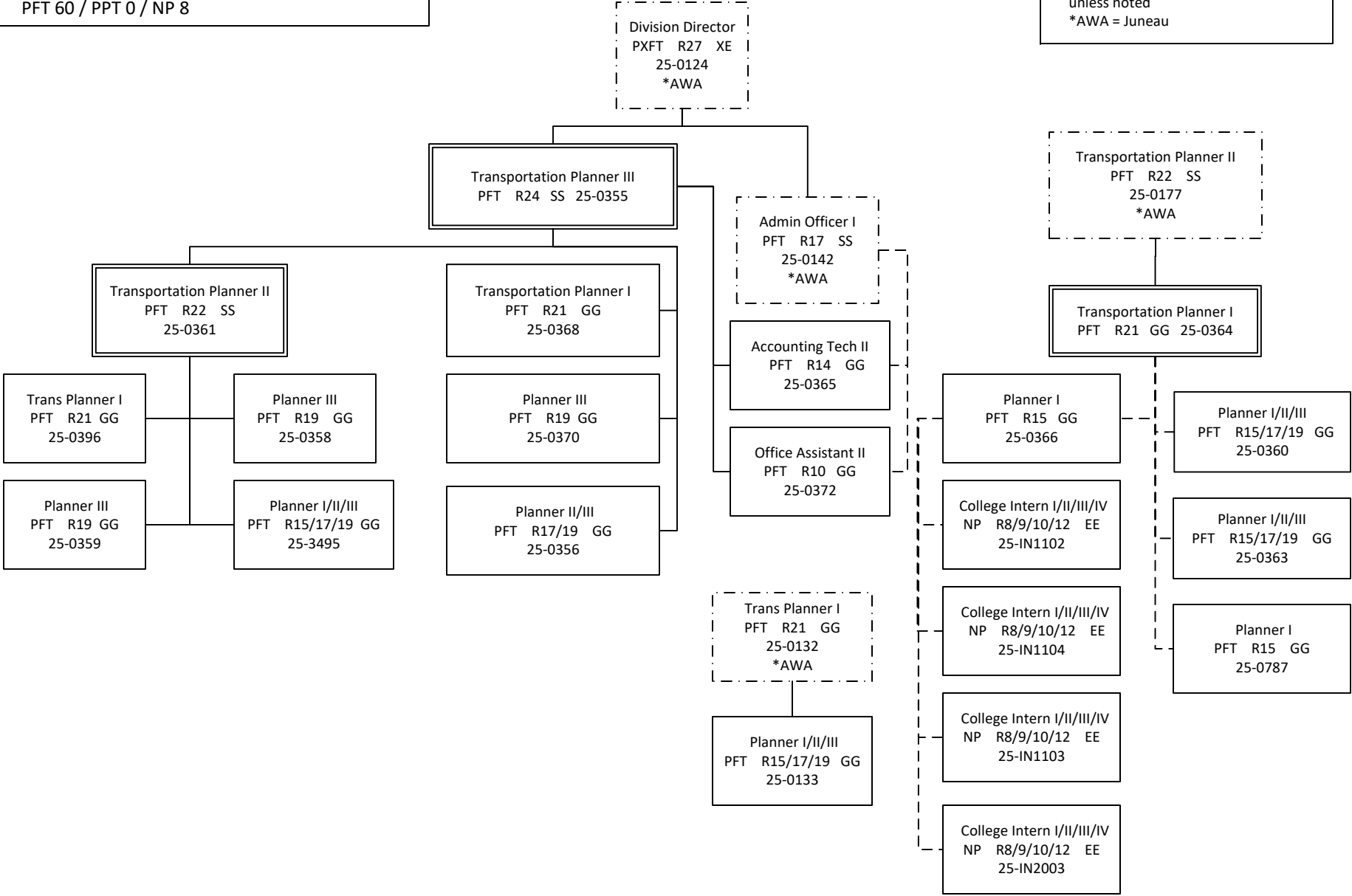
Department of Transportation & Public Facilities  
RDU: Administration and Support (333)  
COMPONENT: Program Development and  
Statewide Planning (2762)  
FY2023 Governor's Budget  
PFT 60 / PPT 0 / NP 8

JUNEAU FIELD OFFICE TOTAL:  
FULL-TIME POSITIONS: 5  
PART-TIME POSITIONS: 0  
NON-PERM POSITIONS: 0  
TOTAL: 5  
\*All positions are located in Juneau



Department of Transportation & Public Facilities  
 RDU: Administration and Support (333)  
 COMPONENT: Program Development and  
 Statewide Planning (2762)  
 FY2023 Governor's Budget  
 PFT 60 / PPT 0 / NP 8

ANCHORAGE FIELD OFFICE TOTAL:  
 FULL-TIME POSITIONS: 17  
 PART-TIME POSITIONS: 0  
 NON-PERM POSITIONS: 4  
 TOTAL: 21  
 \*All positions are located in Anchorage,  
 unless noted  
 \*AWA = Juneau



Department of Transportation & Public Facilities  
 RDU: Administration and Support (333)  
 COMPONENT: Program Development and  
 Statewide Planning (2762)  
 FY2023 Governor's Budget  
 PFT 60 / PPT 0 / NP 8

FAIRBANKS FIELD OFFICE TOTAL:  
 FULL-TIME POSITIONS: 11  
 PART-TIME POSITIONS: 0  
 NON-PERM POSITIONS: 4  
 TOTAL: 15  
 \*All positions are located in  
 Fairbanks, unless noted.  
 \*AWA = Juneau

