

State of Alaska
FY2023 Governor's Operating Budget

Department of Transportation/Public Facilities
Measurement Standards & Commercial Vehicle Compliance
Component Budget Summary

Component: Measurement Standards & Commercial Vehicle Compliance**Contribution to Department's Mission**

Measurement Standards & Commercial Vehicle Compliance's contribution to "Keep Alaska Moving through Service and Infrastructure" is to enhance the safety of the motoring public, preserve public infrastructure, and ensure marketplace confidence and equitable trade.

Core Services

- Issue oversize/overweight permits for vehicles and loads.
- Operate nine fixed, inspection/weigh stations at key locations (Glenn Highway North and South Bound, Potter, Sterling, Fox, Ester, Richardson North and South Bound, and Tok).
- Conduct size and weight enforcement along with safety inspections.
- Provide safety and hazardous material transport training and coordination of secondary size, weight, and safety enforcement activities with other state and local enforcement agencies.
- Inspect and test commercial weighing and measuring devices to ensure compliance with law and regulation.
- Test prepackaged commodities by weight, volume, or count and evaluate retail-scanning systems to ensure consumer confidence.
- Provide calibration and certification for the standards used by Weights and Measures Inspectors and other government agencies and industries.

Major Component Accomplishments in 2021

- Conducted 3,611 commercial motor driver/vehicle safety inspections with 524 vehicles placed out-of-service for safety violations and 46 drivers placed out-of-service for safety violations.
- The intelligent roadside operations computer at the Glenn Highway inspection/weigh station processed 31,745 credential checks on vehicles and of those 30,133 were bypassed.
- 98.0% of vehicles weighed were in compliance with size and weight limits.
- Issued 13,016 oversize/overweight permits helping to preserve infrastructure and increase safety of the traveling public.
- Inspected 6,061 scales, 5,477 meters, and 18 accessories (total of 11,556 in support of industries including construction, fishing, mining, and petroleum).
- Tested and registered 1,034 scales used in the regulation of the commercial marijuana industry.

Key Component Challenges

- Commercial motor vehicle Crash Timeliness Measure for reporting fatal and non-fatal crashes.
- Oversize/overweight permitting program and Scale program are reaching end of life, which provide critical support to Federal mandatory requirements.
- Lack of journeyman Weights and Measures Inspectors to use for training and inspection of medium and large meters throughout Alaska.

COVID-19 Response and Telework Challenges

- No COVID-19 Response or telework challenges.

Significant Changes in Results to be Delivered in FY2023

- Increased hours of operation to conduct commercial vehicle compliance activities out of the Sterling weigh station.
- Issuance of transponders to non-USDOT commercial vehicles (Government exempt) for weigh station bypass.

Statutory and Regulatory Authority

AS 45.75 Weights & Measures Act
AS 19.10.060 Size, Weight, & Load Provisions; Restriction on Use of Highways; Commercial Vehicle Inspection Program
AS 19.10.300 Financial Responsibility (Commercial Motor Vehicle)
AS 19.10.310 Commercial Motor Vehicle Safety Inspections
17 AAC 25 Truck Size, Weight and Safety Regulations
17 AAC 28 Busses
17 AAC 90 Specifications, Tolerances, and Regulations for Weighing and Measuring Devices

| Contact Information |
|---|
| <p>Contact: Dan V. Smith, Director Phone: (907) 365-1210 E-mail: Dan.Smith1@alaska.gov</p> |

| Measurement Standards & Commercial Vehicle Compliance Personal Services Information | | | | |
|--|---------------------------------------|----------------------------|----------------------------------|------------------|
| Authorized Positions | | | Personal Services Costs | |
| | FY2022 Management Plan | FY2023 Governor | | |
| Full-time | 60 | 60 | Annual Salaries | 3,584,786 |
| Part-time | 0 | 0 | COLA | 10,508 |
| Nonpermanent | 0 | 0 | Premium Pay | 82,819 |
| | | | Annual Benefits | 2,639,117 |
| | | | <i>Less 4.44% Vacancy Factor</i> | <i>(280,530)</i> |
| | | | Lump Sum Premium Pay | 0 |
| Totals | 60 | 60 | Total Personal Services | 6,036,700 |

| Position Classification Summary | | | | | |
|--|------------------|------------------|---------------|---------------|--------------|
| Job Class Title | Anchorage | Fairbanks | Juneau | Others | Total |
| Accountant 3 | 1 | 0 | 0 | 0 | 1 |
| Accounting Technician 1 | 1 | 0 | 0 | 0 | 1 |
| Administrative Assistant 2 | 1 | 0 | 0 | 0 | 1 |
| Administrative Officer 2 | 1 | 0 | 0 | 0 | 1 |
| Chf Wm/Prmts | 1 | 1 | 0 | 0 | 2 |
| Comm Veh Ci 1 | 7 | 1 | 0 | 1 | 9 |
| Comm Veh Ci 2 | 3 | 5 | 0 | 3 | 11 |
| Comm Veh Ci 3 | 2 | 2 | 0 | 1 | 5 |
| Comm Veh Ci 4 | 2 | 1 | 0 | 1 | 4 |
| Comm Veh Ci 5 | 1 | 0 | 0 | 0 | 1 |
| Division Director - Px | 1 | 0 | 0 | 0 | 1 |
| Grants Administrator 2 | 1 | 0 | 0 | 0 | 1 |
| Grants Administrator 3 | 1 | 0 | 0 | 0 | 1 |
| Ms Stand Spvr | 1 | 0 | 0 | 0 | 1 |
| Office Assistant 2 | 4 | 0 | 0 | 0 | 4 |
| Program Coordinator 2 | 1 | 0 | 0 | 0 | 1 |
| Project Assistant | 1 | 0 | 0 | 0 | 1 |
| Research Analyst 2 | 1 | 0 | 0 | 0 | 1 |
| Secretary | 1 | 0 | 0 | 0 | 1 |
| State Metrologist 1 | 1 | 0 | 0 | 0 | 1 |
| State Metrologist 2 | 1 | 0 | 0 | 0 | 1 |
| Weights & Measures Inspector 1 | 4 | 0 | 0 | 0 | 4 |
| Weights & Measures Inspector 2 | 0 | 1 | 2 | 0 | 3 |
| Wm Inspect Trn | 3 | 0 | 0 | 0 | 3 |
| Totals | 41 | 11 | 2 | 6 | 60 |

Component Detail All Funds
Department of Transportation/Public Facilities

Component: Measurement Standards & Commercial Vehicle Compliance (2332)
RDU: Administration and Support (333)

Non-Formula Component

| | FY2021 Actuals | FY2022 Conference Committee | FY2022 Authorized | FY2022 Management Plan | FY2023 Governor | FY2022 Management Plan vs FY2023 Governor | |
|-----------------------------------|----------------|-----------------------------|-------------------|------------------------|-----------------|---|---------------|
| 71000 Personal Services | 4,936.8 | 5,963.3 | 5,963.3 | 5,963.3 | 6,036.7 | 73.4 | 1.2% |
| 72000 Travel | 87.2 | 158.6 | 158.6 | 158.6 | 158.6 | 0.0 | 0.0% |
| 73000 Services | 712.4 | 1,233.8 | 1,233.8 | 1,233.8 | 987.4 | -246.4 | -20.0% |
| 74000 Commodities | 147.0 | 105.0 | 105.0 | 105.0 | 105.0 | 0.0 | 0.0% |
| 75000 Capital Outlay | 14.6 | 39.4 | 39.4 | 39.4 | 39.4 | 0.0 | 0.0% |
| 77000 Grants, Benefits | 0.0 | 0.0 | 0.0 | 0.0 | 0.0 | 0.0 | 0.0% |
| 78000 Miscellaneous | 0.0 | 0.0 | 0.0 | 0.0 | 0.0 | 0.0 | 0.0% |
| Totals | 5,898.0 | 7,500.1 | 7,500.1 | 7,500.1 | 7,327.1 | -173.0 | -2.3% |
| Fund Sources: | | | | | | | |
| 1004 Gen Fund (UGF) | 1,130.6 | 1,445.4 | 1,445.4 | 1,445.4 | 1,230.8 | -214.6 | -14.8% |
| 1005 GF/Prgm (DGF) | 2,497.9 | 3,090.5 | 3,090.5 | 3,090.5 | 3,111.9 | 21.4 | 0.7% |
| 1007 I/A Rcpts (Other) | 4.8 | 15.0 | 15.0 | 15.0 | 15.0 | 0.0 | 0.0% |
| 1061 CIP Rcpts (Other) | 1,642.3 | 2,239.2 | 2,239.2 | 2,239.2 | 2,253.5 | 14.3 | 0.6% |
| 1215 UCR Rcpts (Other) | 622.4 | 710.0 | 710.0 | 710.0 | 715.9 | 5.9 | 0.8% |
| Unrestricted General (UGF) | 1,130.6 | 1,445.4 | 1,445.4 | 1,445.4 | 1,230.8 | -214.6 | -14.8% |
| Designated General (DGF) | 2,497.9 | 3,090.5 | 3,090.5 | 3,090.5 | 3,111.9 | 21.4 | 0.7% |
| Other Funds | 2,269.5 | 2,964.2 | 2,964.2 | 2,964.2 | 2,984.4 | 20.2 | 0.7% |
| Federal Funds | 0.0 | 0.0 | 0.0 | 0.0 | 0.0 | 0.0 | 0.0% |
| Positions: | | | | | | | |
| Permanent Full Time | 60 | 60 | 60 | 60 | 60 | 0 | 0.0% |
| Permanent Part Time | 0 | 0 | 0 | 0 | 0 | 0 | 0.0% |
| Non Permanent | 0 | 0 | 0 | 0 | 0 | 0 | 0.0% |

Change Record Detail - Multiple Scenarios with Descriptions
Department of Transportation/Public Facilities

Component: Measurement Standards & Commercial Vehicle Compliance (2332)

RDU: Administration and Support (333)

| Scenario/Change Record Title | Trans Type | Totals | Personal Services | Travel | Services | Commodities | Capital Outlay | Grants, Benefits | Miscellaneous | Positions | | NP |
|---|------------|----------------|-------------------|--------------|----------------|--------------|----------------|------------------|---------------|-----------|----------|----------|
| | | | | | | | | | | PFT | PPT | |
| ***** Changes From FY2022 Conference Committee To FY2022 Authorized ***** | | | | | | | | | | | | |
| FY2022 Conference Committee | | | | | | | | | | | | |
| | ConfCom | 7,500.1 | 5,963.3 | 158.6 | 1,233.8 | 105.0 | 39.4 | 0.0 | 0.0 | 60 | 0 | 0 |
| 1004 Gen Fund | | 1,445.4 | | | | | | | | | | |
| 1005 GF/Prgm | | 3,090.5 | | | | | | | | | | |
| 1007 I/A Rcpts | | 15.0 | | | | | | | | | | |
| 1061 CIP Rcpts | | 2,239.2 | | | | | | | | | | |
| 1215 UCR Rcpts | | 710.0 | | | | | | | | | | |
| Subtotal | | 7,500.1 | 5,963.3 | 158.6 | 1,233.8 | 105.0 | 39.4 | 0.0 | 0.0 | 60 | 0 | 0 |
| ***** Changes From FY2022 Management Plan To FY2023 Governor ***** | | | | | | | | | | | | |
| FY2023 PERS Actuarial Rate Adjustment to 24.79% Ch9 SLA2021 (SB55) | | | | | | | | | | | | |
| | SalAdj | -185.2 | -185.2 | 0.0 | 0.0 | 0.0 | 0.0 | 0.0 | 0.0 | 0 | 0 | 0 |
| 1004 Gen Fund | | -26.7 | | | | | | | | | | |
| 1005 GF/Prgm | | -76.9 | | | | | | | | | | |
| 1061 CIP Rcpts | | -61.8 | | | | | | | | | | |
| 1215 UCR Rcpts | | -19.8 | | | | | | | | | | |
| Includes: FY2023 Adjustment for PERS ARM Board Approved Rate of 24.79% (from 30.11%): \$-185.2 | | | | | | | | | | | | |
| FY2023 Salary and Benefit Adjustments | | | | | | | | | | | | |
| | SalAdj | 58.6 | 58.6 | 0.0 | 0.0 | 0.0 | 0.0 | 0.0 | 0.0 | 0 | 0 | 0 |
| 1004 Gen Fund | | 10.0 | | | | | | | | | | |
| 1005 GF/Prgm | | 21.4 | | | | | | | | | | |
| 1061 CIP Rcpts | | 21.3 | | | | | | | | | | |
| 1215 UCR Rcpts | | 5.9 | | | | | | | | | | |
| FY2023 Change General Government Unit (GG, GP, GY, GZ) - SBS, and Risk Management Rates: \$25.7 | | | | | | | | | | | | |
| FY2023 Change Supervisory Employees (SS) - Health Insurance from \$1,555 to \$1,685; SBS and Risk Management Rates: \$20.0 | | | | | | | | | | | | |
| FY2023 Change Partially Exempt & Exempt Executive (EE) - Health Insurance from \$1,555 to \$1,685; SBS and Risk Management Rates: \$2.6 | | | | | | | | | | | | |
| Includes: FY2023 Supervisory Unit 1% COLA: \$10.3 | | | | | | | | | | | | |
| Cost Savings Realized Through OIT PBX Phone Rate Decreases | | | | | | | | | | | | |
| | Dec | -1.4 | 0.0 | 0.0 | -1.4 | 0.0 | 0.0 | 0.0 | 0.0 | 0 | 0 | 0 |
| 1004 Gen Fund | | -1.4 | | | | | | | | | | |
| The DOT&PF has realized a cost savings through the OIT rate decrease on PBX. | | | | | | | | | | | | |

Change Record Detail - Multiple Scenarios with Descriptions
Department of Transportation/Public Facilities

Component: Measurement Standards & Commercial Vehicle Compliance (2332)

RDU: Administration and Support (333)

| Scenario/Change Record Title | Trans Type | Totals | Personal Services | Travel | Services | Commodities | Capital Outlay | Grants, Benefits | Miscellaneous | Positions | | NP |
|--|------------|----------------|-------------------|--------------|--------------|--------------|----------------|------------------|---------------|-----------|----------|----------|
| | | | | | | | | | | PFT | PPT | |
| Cost Savings Realized through OIT Core Rate Decrease | | | | | | | | | | | | |
| | Dec | -45.0 | 0.0 | 0.0 | -45.0 | 0.0 | 0.0 | 0.0 | 0.0 | 0 | 0 | 0 |
| 1004 Gen Fund | | -45.0 | | | | | | | | | | |
| The DOT&PF has realized a cost savings through the OIT rate decrease on their core rate. | | | | | | | | | | | | |
| Program Receipts Carry-Forward | | | | | | | | | | | | |
| | Misadj | 0.0 | 0.0 | 0.0 | 0.0 | 0.0 | 0.0 | 0.0 | 0.0 | 0 | 0 | 0 |
| The amount allocated for Measurement Standards and Commercial Vehicle Compliance includes the unexpended and unobligated balance on June 30, 2022, of program receipts collected by the DOT&PF. | | | | | | | | | | | | |
| Realign PERS Rate Adjustment by Fund Source Ch9 SLA2021 (SB55) | | | | | | | | | | | | |
| | FndChg | 0.0 | 0.0 | 0.0 | 0.0 | 0.0 | 0.0 | 0.0 | 0.0 | 0 | 0 | 0 |
| 1004 Gen Fund | | -96.7 | | | | | | | | | | |
| 1005 GF/Prgm | | 76.9 | | | | | | | | | | |
| 1215 UCR Rcpts | | 19.8 | | | | | | | | | | |
| Fund source adjustments were made to this component in the SB55 fiscal note (Ch 9 SLA 2021) to accommodate the application of the actuarial PERS rate in FY2022. This transaction realigns fund sources to reduce the UGF subsidy assigned in the fiscal note. | | | | | | | | | | | | |
| Fund Source Swap General Fund to CIP Receipts for Federal Grant Funds | | | | | | | | | | | | |
| | FndChg | 0.0 | 0.0 | 0.0 | 0.0 | 0.0 | 0.0 | 0.0 | 0.0 | 0 | 0 | 0 |
| 1004 Gen Fund | | -54.8 | | | | | | | | | | |
| 1061 CIP Rcpts | | 54.8 | | | | | | | | | | |
| Measurement Standards has been awarded new Capital Improvement Program Federal Grant Funds for FY2023 and a fund source swap is required to fund positions. | | | | | | | | | | | | |
| Transfer Authority from Services for Anticipated Personal Service Expenditures | | | | | | | | | | | | |
| | LIT | 0.0 | 200.0 | 0.0 | -200.0 | 0.0 | 0.0 | 0.0 | 0.0 | 0 | 0 | 0 |
| Transfer authority from services for anticipated personal service expenditures. The remaining services authority is anticipated to be sufficient to cover operating expenditures. | | | | | | | | | | | | |
| Totals | | 7,327.1 | 6,036.7 | 158.6 | 987.4 | 105.0 | 39.4 | 0.0 | 0.0 | 60 | 0 | 0 |

Line Item Detail (1676)
Department of Transportation/Public Facilities
Travel

Component: Measurement Standards & Commercial Vehicle Compliance (2332)

| Line Number | Line Name | | FY2021 Actuals | FY2022 Management Plan | FY2023 Governor |
|----------------------------------|------------------------------|---|----------------|------------------------|-----------------|
| 2000 | Travel | | 87.2 | 158.6 | 158.6 |
| Object Class | Servicing Agency | Explanation | FY2021 Actuals | FY2022 Management Plan | FY2023 Governor |
| 2000 Travel Detail Totals | | | 87.2 | 158.6 | 158.6 |
| 2000 | In-State Employee Travel | Airfare, Lodging, and Meals for employees while in travel status perform weights and measures inspections, commercial vehicle enforcement activities, training, or management meetings. | 87.2 | 153.6 | 153.6 |
| 2002 | Out of State Employee Travel | Out of state employee travel. | 0.0 | 4.9 | 4.9 |
| 2006 | Other Travel Costs | Cash advance fee. | 0.0 | 0.1 | 0.1 |

Line Item Detail (1676)
Department of Transportation/Public Facilities
Services

Component: Measurement Standards & Commercial Vehicle Compliance (2332)

| Line Number | Line Name | | FY2021 Actuals | FY2022 Management Plan | FY2023 Governor |
|------------------------------------|------------------------|---|----------------|------------------------|-----------------|
| 3000 | Services | | 712.4 | 1,233.8 | 987.4 |
| Object Class | Servicing Agency | Explanation | FY2021 Actuals | FY2022 Management Plan | FY2023 Governor |
| 3000 Services Detail Totals | | | 712.4 | 1,233.8 | 987.4 |
| 3000 | Education Services | Training or conference fees for employees to attend national conferences, conventions, or meetings. | 2.9 | 6.0 | 3.0 |
| 3001 | Financial Services | Credit card processing fees. | 32.2 | 77.0 | 35.0 |
| 3003 | Information Technology | Information technology contractual cost such as software, licensing, maintenance, training, consulting and equipment lease. Includes Microsoft Enterprises Agreement, LAN desk software, and applied microsystem support. | 50.4 | 15.0 | 15.0 |
| 3004 | Telecommunications | Data/network charges for communications services to weigh stations and remote offices for centralized use of databases and networks. Cellular phone costs used while conducting program specific functions while employees are in the field and/or traveling. Long distance phone charges made during daily operations. The division has satellite offices within three major areas of the State of Alaska, as well as an 800 line for permit applications. | 36.1 | 59.5 | 37.0 |
| 3005 | Health Services | Health services for ergonomic issues as they arise. | 0.4 | 1.0 | 1.0 |

Line Item Detail (1676)
Department of Transportation/Public Facilities
Services

Component: Measurement Standards & Commercial Vehicle Compliance (2332)

| Object Class | Servicing Agency | Explanation | FY2021 Actuals | FY2022 Management Plan | FY2023 Governor |
|------------------------------------|--|---|----------------|---------------------------|-----------------|
| 3000 Services Detail Totals | | | 712.4 | 1,233.8 | 987.4 |
| 3006 | Delivery Services | Freight for shipping equipment. Courier services, post office box rentals and postage. | 28.3 | 28.7 | 28.7 |
| 3007 | Advertising and Promotions | Advertising costs for public hearings concerning proposed regulation changes. | 0.6 | 7.0 | 6.0 |
| 3008 | Utilities | Electricity, water and sewer, and disposal. | 0.1 | 3.0 | 3.0 |
| 3009 | Structure/Infrastructure/Land | Repairs or maintenance on facilities not covered under a lease or Reimbursable Services Agreement. Combined account codes for Janitorial and other repairs/maintenance. Annual inspection and recharge of fire extinguishers. | 68.6 | 68.6 | 68.6 |
| 3010 | Equipment/Machinery | Repairs for equipment or small machinery used in the course of conducting program specific activities. Includes maintenance of weigh station scales. Combines equipment/machinery repairs/maintenance and rentals/leases. | 31.4 | 140.0 | 40.0 |
| 3011 | Other Services | Safety services combined other non-IA services such as fees for printing annual billings, armored car service, laundry. | 4.6 | 31.9 | 21.9 |
| 3017 | Inter-Agency Information Technology Admin - Department-wide Non-Telecommunications | Computer services provided by the Department of Administration such as central server, data storage, printing, network services, open connect, and task order system. | 108.6 | 152.9 | 85.0 |
| 3018 | Inter-Agency Information Technology Admin - Department-wide | Telecommunications services | 14.1 | 18.6 | 18.6 |

Line Item Detail (1676)
Department of Transportation/Public Facilities
Services

Component: Measurement Standards & Commercial Vehicle Compliance (2332)

| Object Class | Servicing Agency | Explanation | FY2021 Actuals | FY2022 Management Plan | FY2023 Governor |
|------------------------------------|--|--|----------------|---------------------------|-----------------|
| 3000 Services Detail Totals | | | 712.4 | 1,233.8 | 987.4 |
| Telecommunications | | provided by the Department of Administration such as basic telephone services, equipment and features, dedicated voice/data line service, statewide paging, two-way radio, and video conferencing. | | | |
| 3018 | Inter-Agency Information Technology Telecommunications | M&VA - Department-wide | 0.9 | 0.0 | 0.0 |
| 3020 | Inter-Agency Building Maintenance | Trans - Central Region Facilities (566) | 0.0 | 30.0 | 30.0 |
| 3021 | Inter-Agency Mail | Admin - Department-wide | 0.3 | 1.0 | 1.0 |
| 3022 | Inter-Agency Human Resources | Admin - Department-wide | 0.0 | 39.5 | 39.5 |
| 3022 | Inter-Agency Human Resources | Gov - Department-wide | 0.3 | 0.0 | 0.0 |
| 3024 | Inter-Agency Legal | E&ED - Department-wide | 0.1 | 0.0 | 0.0 |
| 3024 | Inter-Agency Legal | Law - Department-wide | 0.8 | 30.0 | 30.0 |
| 3026 | Inter-Agency Insurance | Admin - Department-wide | 2.0 | 0.3 | 0.3 |

Line Item Detail (1676)
Department of Transportation/Public Facilities
Services

Component: Measurement Standards & Commercial Vehicle Compliance (2332)

| Object Class | | Servicing Agency | Explanation | FY2021 Actuals | FY2022 Management Plan | FY2023 Governor |
|------------------------------------|---|--------------------------------------|--|----------------|------------------------|-----------------|
| 3000 Services Detail Totals | | | | 712.4 | 1,233.8 | 987.4 |
| | | | with Department of Administration for self- insurance programs. | | | |
| 3027 | Inter-Agency Financial | Admin - Department-wide | Chargeback fees for AKPAY/IRIS/ALDER. | 21.5 | 35.0 | 35.0 |
| 3028 | Inter-Agency Americans with Disabilities Act Compliance | Admin - Department-wide | Chargeback fees for the statewide coordinator for the Americans with Disabilities Act (ADA). | 0.6 | 0.3 | 0.3 |
| 3029 | Inter-Agency Education/Training | E&ED - Department-wide | Inter-agency education/training services. | 0.0 | 0.5 | 0.5 |
| 3036 | Inter-Agency Safety | Trans - AIA Administration (613) | Costs associated with finger printing/identification cards. | 0.0 | 0.5 | 0.5 |
| 3037 | State Equipment Fleet | Trans - State Equipment Fleet (2791) | State equipment fleet services. | 261.7 | 390.0 | 390.0 |
| 3038 | Inter-Agency Management/Consulting | Admin - Department-wide | Shared Services of Alaska accounts payable and travel and expense activities. | 45.9 | 97.5 | 97.5 |

Line Item Detail (1676)
Department of Transportation/Public Facilities
Commodities

Component: Measurement Standards & Commercial Vehicle Compliance (2332)

| Line Number | Line Name | | FY2021 Actuals | FY2022 Management Plan | FY2023 Governor |
|---------------------------------------|-----------------------------|---|----------------|------------------------|-----------------|
| 4000 | Commodities | | 147.0 | 105.0 | 105.0 |
| Object Class | Servicing Agency | Explanation | FY2021 Actuals | FY2022 Management Plan | FY2023 Governor |
| 4000 Commodities Detail Totals | | | 147.0 | 105.0 | 105.0 |
| 4000 | Business | Office supplies used to conduct official business; equipment/Furniture/Tools/Vehicles; and Books and educational supplies. | 128.8 | 60.5 | 60.5 |
| 4000 | Business | Computer replacement program to replace 16% of the systems hardware each year. | 0.0 | 17.0 | 17.0 |
| 4002 | Household/Institutional | Clothing, uniforms, and cleaning supplies. | 8.3 | 7.0 | 7.0 |
| 4003 | Scientific and Medical | Instruments and laboratory supplies. | 0.0 | 2.8 | 2.8 |
| 4004 | Safety | Fire suppression and other safety equipment necessary to conduct official business. Combines Fire Suppression and Other Safety account codes. | 9.1 | 10.7 | 10.7 |
| 4006 | Signs and Markers | Signs and Markers for roadside safety such as hazard marker and warning signs. | 0.5 | 0.0 | 0.0 |
| 4015 | Parts and Supplies | Parts and supplies. | 0.2 | 4.0 | 4.0 |
| 4019 | Small Tools/Minor Equipment | Small Tools/Minor Equipment. | 0.0 | 3.0 | 3.0 |
| 4020 | Equipment Fuel | Fuel for Equipment | 0.1 | 0.0 | 0.0 |

Line Item Detail (1676)
Department of Transportation/Public Facilities
Capital Outlay

Component: Measurement Standards & Commercial Vehicle Compliance (2332)

| Line Number | Line Name | | FY2021 Actuals | FY2022 Management Plan | FY2023 Governor |
|--|-------------------------------|--|----------------|------------------------|-----------------|
| 5000 | Capital Outlay | | 14.6 | 39.4 | 39.4 |
| Object Class | Servicing Agency | Explanation | FY2021 Actuals | FY2022 Management Plan | FY2023 Governor |
| 5000 Capital Outlay Detail Totals | | | 14.6 | 39.4 | 39.4 |
| 5002 | Structures and Infrastructure | Structures and infrastructure. | 14.6 | 15.0 | 15.0 |
| 5004 | Equipment | Equipment needed in the course of conducting program activities. | 0.0 | 24.4 | 24.4 |

Revenue Detail (1681)
Department of Transportation/Public Facilities

Component: Measurement Standards & Commercial Vehicle Compliance (2332)

| Revenue Type (OMB Fund Code) Revenue Source | Component | Comment | FY2021 Actuals | FY2022 Management Plan | FY2023 Governor |
|---|--------------------------|--|----------------|---------------------------|-----------------|
| 5005 GF/Prgm (1005 GF/Prgm) | | | 3,111.9 | 3,111.9 | 3,111.9 |
| 5104 Program Receipts Charges for Services - 3rd Party Collectns | | These receipts are derived from the collections for third party trips/fees. | 21.4 | 21.4 | 21.4 |
| 5111 Program Receipts Transportation - Charges for Services | | These receipts are derived from the collections for the following fees and permits: Oversize/overweight permit fees; commercial vehicle temporary trip permit fees; measuring device registration fees; metrology laboratory fees; and third party trips/fees. AS 45.75 Weights & Measures Act AS 19.10.060 Size, Weight & Load Provisions; Restriction of Use of Highways; Commercial Vehicle Inspection Program AS 19.10.300 Financial Responsibility (Commercial Motor Vehicle) AS 19.10.310 Commercial Motor Vehicle Inspections 17 AAC 25 Truck Size, Weight and Safety Regulations for Weighing and Measuring Devices | 3,090.5 | 3,090.5 | 3,090.5 |
| 5007 I/A Rcpts (1007 I/A Rcpts) | | | 15.0 | 15.0 | 15.0 |
| 5301 Inter-Agency Receipts | PubSaf - Department-wide | Reimbursable services agreement with the Department of Public Safety for the certification of radar scanners for the Alaska State Troopers. | 15.0 | 15.0 | 15.0 |
| 5061 CIP Rcpts (1061 CIP Rcpts) | | | 2,253.5 | 2,253.5 | 2,253.5 |

Revenue Detail (1681)
Department of Transportation/Public Facilities

Component: Measurement Standards & Commercial Vehicle Compliance (2332)

| Revenue Type (OMB Fund Code) | Component | Comment | FY2021 Actuals | FY2022 Management Plan | FY2023 Governor |
|--|------------------|---|-----------------------|-------------------------------|------------------------|
| 5351 Capital Improvement Project Inter-Agency | | Capital improvement project receipts for work in direct support of capital projects. | 1,932.2 | 1,932.2 | 1,932.2 |
| 5351 Capital Improvement Project Inter-Agency | | Recovery of indirect costs from the capital budget via the department's Indirect Cost Allocation Plan (ICAP). | 321.3 | 321.3 | 321.3 |
| 5215 UCR Rcpts (1215 UCR Rcpts) | | | 715.9 | 715.9 | 715.9 |
| 5412 Uniform Commercial Registration Fees | | These receipts are derived from the collection of the following fees: Unified Carrier Registration (UCR) fees Department of Transportation; Federal Motor Carrier Safety Administration; 49 CFR Part 367; Unified Carrier Act of 2005 | 715.9 | 715.9 | 715.9 |

Inter-Agency Services (1682)
Department of Transportation/Public Facilities

Component: Measurement Standards & Commercial Vehicle Compliance (2332)

| | | | | FY2021 Actuals | FY2022 Management Plan | FY2023 Governor |
|--|---|---|--|----------------|---------------------------|-----------------|
| Component Totals | | | | 456.8 | 796.1 | 728.2 |
| With Department of Administration | | | | 193.0 | 345.1 | 277.2 |
| With Department of Military and Veterans' Affairs | | | | 0.9 | 0.0 | 0.0 |
| With Department of Transportation/Public Facilities | | | | 261.7 | 420.5 | 420.5 |
| With Office of the Governor | | | | 0.3 | 0.0 | 0.0 |
| With Department of Education and Early Development | | | | 0.1 | 0.5 | 0.5 |
| With Department of Law | | | | 0.8 | 30.0 | 30.0 |
| Object Class | Servicing Agency | Explanation | | FY2021 Actuals | FY2022 Management Plan | FY2023 Governor |
| 3017 | Inter-Agency Information Technology Non-Telecommunications | Admin - Department-wide | Computer services provided by the Department of Administration such as central server, data storage, printing, network services, open connect, and task order system. | 108.6 | 152.9 | 85.0 |
| 3018 | Inter-Agency Information Technology Telecommunications | Admin - Department-wide | Telecommunications services provided by the Department of Administration such as basic telephone services, equipment and features, dedicated voice/data line service, statewide paging, two-way radio, and video conferencing. | 14.1 | 18.6 | 18.6 |
| 3018 | Inter-Agency Information Technology Telecommunications | M&VA - Department-wide | Telecommunications services such as basic telephone services, equipment and features, dedicated voice/data line service, statewide paging, two-way radio, and video conferencing. | 0.9 | 0.0 | 0.0 |
| 3020 | Inter-Agency Building Maintenance | Trans - Central Region Facilities (566) | Reimbursable services agreement with the Department of Transportation and Public Facilities Maintenance and Operations, Central Region Facilities for Weigh Station Maintenance. | 0.0 | 30.0 | 30.0 |

Inter-Agency Services (1682)
Department of Transportation/Public Facilities

Component: Measurement Standards & Commercial Vehicle Compliance (2332)

| Object Class | | Servicing Agency | Explanation | FY2021 Actuals | FY2022 Management Plan | FY2023 Governor |
|--------------|---|--------------------------------------|--|----------------|------------------------|-----------------|
| 3021 | Inter-Agency Mail | Admin - Department-wide | Chargeback fees for central mail services such as mailing vendor payments and payroll warrants. | 0.3 | 1.0 | 1.0 |
| 3022 | Inter-Agency Human Resources | Admin - Department-wide | Chargeback fees for human resource services such as labor relations, position classification and payroll processing. | 0.0 | 39.5 | 39.5 |
| 3022 | Inter-Agency Human Resources | Gov - Department-wide | Office of Management and Budget - Budget Analyst support. | 0.3 | 0.0 | 0.0 |
| 3024 | Inter-Agency Legal | E&ED - Department-wide | Legal services provided by the Department of Law. | 0.1 | 0.0 | 0.0 |
| 3024 | Inter-Agency Legal | Law - Department-wide | Legal services provided by the Department of Law. Legal fees for citation disputes and for regulation/statute changes. | 0.8 | 30.0 | 30.0 |
| 3026 | Inter-Agency Insurance | Admin - Department-wide | Reimbursable services agreement with Department of Administration for self- insurance programs. | 2.0 | 0.3 | 0.3 |
| 3027 | Inter-Agency Financial | Admin - Department-wide | Chargeback fees for AKPAY/IRIS/ALDER. | 21.5 | 35.0 | 35.0 |
| 3028 | Inter-Agency Americans with Disabilities Act Compliance | Admin - Department-wide | Chargeback fees for the statewide coordinator for the Americans with Disabilities Act (ADA). | 0.6 | 0.3 | 0.3 |
| 3029 | Inter-Agency Education/Training | E&ED - Department-wide | Inter-agency education/training services. | 0.0 | 0.5 | 0.5 |
| 3036 | Inter-Agency Safety | Trans - AIA Administration (613) | Costs associated with finger printing/identification cards. | 0.0 | 0.5 | 0.5 |
| 3037 | State Equipment Fleet | Trans - State Equipment Fleet (2791) | State equipment fleet services. | 261.7 | 390.0 | 390.0 |
| 3038 | Inter-Agency Management/Consulting | Admin - Department-wide | Shared Services of Alaska accounts payable and travel and expense activities. | 45.9 | 97.5 | 97.5 |

Personal Services Expenditure Detail
Department of Transportation/Public Facilities

Scenario: FY2023 Governor (18673)
Component: Measurement Standards & Commercial Vehicle Compliance (2332)
RDU: Administration and Support (333)

| PCN | Job Class Title | Time Status | Retire Code | Barg Unit | Location | Salary Sched | Range / Step | Comp Months | Split / Count | Annual Salaries | COLA | Premium Pay | Annual Benefits | Total Costs | UGF Amount |
|---------|--------------------------------|-------------|-------------|-----------|-----------|--------------|--------------|-------------|---------------|-----------------|-------|-------------|-----------------|-------------|------------|
| 08-5001 | Weights & Measures Inspector 2 | FT | A | GP | Juneau | 205 | 16A / B | 12.0 | | 55,799 | 0 | 2,112 | 42,409 | 100,320 | 0 |
| 08-5005 | Weights & Measures Inspector 1 | FT | A | GP | Anchorage | 200 | 14B / C | 12.0 | | 47,224 | 0 | 5,433 | 40,265 | 92,922 | 0 |
| 08-5006 | Wm Inspect Trn | FT | A | GP | Anchorage | 200 | 12B / C | 12.0 | | 41,928 | 0 | 5,398 | 38,090 | 85,416 | 0 |
| 08-5031 | Accountant 3 | FT | A | GP | Anchorage | 200 | 18J / K | 12.0 | | 79,203 | 0 | 0 | 51,096 | 130,299 | 42,453 |
| 08-5032 | Wm Inspect Trn | FT | A | GP | Anchorage | 200 | 12B / C | 12.0 | | 41,535 | 0 | 4,763 | 37,671 | 83,969 | 0 |
| 08-5038 | Weights & Measures Inspector 2 | FT | A | GP | Fairbanks | 203 | 16F / G | 12.0 | | 65,060 | 0 | 5,931 | 47,746 | 118,737 | 0 |
| 08-5039 | Weights & Measures Inspector 2 | FT | A | GP | Juneau | 205 | 16P / Q | 12.0 | | 86,747 | 0 | 3,287 | 55,515 | 145,549 | 0 |
| 08-5043 | Weights & Measures Inspector 1 | FT | A | GP | Anchorage | 200 | 14B / C | 12.0 | | 47,895 | 0 | 5,433 | 40,539 | 93,867 | 0 |
| 08-5044 | State Metrologist 2 | FT | A | GP | Anchorage | 200 | 18M | 12.0 | | 84,533 | 0 | 0 | 53,271 | 137,804 | 0 |
| 08-5048 | Chf Wm/Prmts | FT | A | SS | Anchorage | 200 | 22A / B | 12.0 | | 87,188 | 1,228 | 0 | 55,954 | 144,370 | 0 |
| 08-5054 | Comm Veh Ci 4 | FT | A | SS | Anchorage | 200 | 17D / E | 12.0 | | 69,890 | 984 | 0 | 48,896 | 119,770 | 33,435 |
| 08-5055 | Division Director - Px | FT | A | XE | Anchorage | N00 | 27J | 12.0 | | 126,984 | 0 | 0 | 72,047 | 199,031 | 19,186 |
| 08-5056 | Chf Wm/Prmts | FT | A | SS | Fairbanks | 203 | 22E / F | 12.0 | | 102,928 | 1,449 | 0 | 62,376 | 166,753 | 25,173 |
| 08-5058 | Administrative Assistant 2 | FT | A | GP | Anchorage | 200 | 14E / F | 12.0 | | 53,014 | 0 | 2,011 | 41,232 | 96,257 | 6,392 |
| 08-5059 | Office Assistant 2 | FT | A | GP | Anchorage | 200 | 10F / G | 12.0 | | 41,916 | 0 | 952 | 36,271 | 79,139 | 25,815 |
| 08-5060 | Secretary | FT | A | GP | Anchorage | 200 | 11D / E | 12.0 | | 41,339 | 0 | 0 | 35,648 | 76,987 | 11,548 |
| 08-5061 | Project Assistant | FT | A | GP | Anchorage | 200 | 16G / J | 12.0 | | 66,418 | 0 | 0 | 45,880 | 112,298 | 30,610 |
| 08-5062 | Administrative Officer 2 | FT | A | SS | Anchorage | 200 | 19C / D | 12.0 | | 76,383 | 1,075 | 0 | 51,546 | 129,004 | 97,025 |
| 08-5064 | Office Assistant 2 | FT | A | GP | Anchorage | 200 | 10B / C | 12.0 | | 37,595 | 0 | 844 | 34,464 | 72,903 | 14,929 |
| 08-5066 | Comm Veh Ci 2 | FT | A | GP | Anchorage | 200 | 15G | 12.0 | | 60,236 | 0 | 2,258 | 44,279 | 106,773 | 14,078 |
| 08-5067 | Comm Veh Ci 3 | FT | A | GP | Anchorage | 200 | 16B / C | 12.0 | | 55,551 | 0 | 0 | 41,446 | 96,997 | 12,610 |
| 08-5068 | Comm Veh Ci 2 | FT | A | GP | Anchorage | 200 | 15A / B | 12.0 | | 50,153 | 0 | 3,650 | 40,733 | 94,536 | 12,290 |
| 08-5069 | Comm Veh Ci 2 | FT | A | GP | Tok | 200 | 15Q | 12.0 | | 78,468 | 0 | 5,885 | 53,197 | 137,550 | 17,882 |
| 08-5070 | Accounting Technician 1 | FT | A | GP | Anchorage | 200 | 12E / F | 12.0 | | 45,923 | 0 | 0 | 37,518 | 83,441 | 16,645 |
| 08-5071 | Comm Veh Ci 1 | FT | A | GP | Anchorage | 200 | 13B / C | 12.0 | | 44,883 | 0 | 0 | 37,094 | 81,977 | 10,657 |
| 08-5072 | Comm Veh Ci 2 | FT | A | GP | Fairbanks | 203 | 15C / D | 12.0 | | 53,943 | 0 | 0 | 40,790 | 94,733 | 12,315 |
| 08-5075 | Comm Veh Ci 1 | FT | A | GP | Fairbanks | 203 | 13B / C | 12.0 | | 46,205 | 0 | 0 | 37,633 | 83,838 | 10,899 |
| 08-5076 | Comm Veh Ci 2 | FT | A | GP | Fairbanks | 203 | 15F / G | 12.0 | | 60,396 | 0 | 0 | 43,423 | 103,819 | 13,497 |
| 08-5077 | Comm Veh Ci 2 | FT | A | GP | Fairbanks | 203 | 15A / B | 12.0 | | 50,946 | 0 | 2,820 | 40,718 | 94,484 | 12,283 |
| 08-5080 | Office Assistant 2 | FT | A | GP | Anchorage | 200 | 10B / C | 12.0 | | 37,001 | 0 | 844 | 34,222 | 72,067 | 59,294 |
| 08-5082 | Comm Veh Ci 3 | FT | A | GP | Tok | 200 | 16E / F | 12.0 | | 61,308 | 0 | 2,258 | 44,716 | 108,282 | 14,077 |
| 08-5083 | Comm Veh Ci 3 | FT | A | GP | Fairbanks | 203 | 16G | 12.0 | | 66,456 | 0 | 2,492 | 46,912 | 115,860 | 15,062 |
| 08-5084 | Comm Veh Ci 2 | FT | A | GP | Anchorage | 200 | 15B / C | 12.0 | | 51,377 | 0 | 0 | 39,743 | 91,120 | 11,846 |
| 08-5086 | Comm Veh Ci 1 | FT | A | GP | Anchorage | 200 | 13C / D | 12.0 | | 45,598 | 0 | 0 | 37,385 | 82,983 | 10,788 |

Note: If a position is split, an asterisk (*) will appear in the Split/Count column. If the split position is also counted in the component, two asterisks (**) will appear in this column. [No valid job title] appearing in the Job Class Title indicates that the PCN has an invalid class code or invalid range for the class code effective date of this scenario.

Personal Services Expenditure Detail
Department of Transportation/Public Facilities

Scenario: FY2023 Governor (18673)
Component: Measurement Standards & Commercial Vehicle Compliance (2332)
RDU: Administration and Support (333)

| PCN | Job Class Title | Time Status | Retire Code | Barg Unit | Location | Salary Sched | Range / Step | Comp Months | Split / Count | Annual Salaries | COLA | Premium Pay | Annual Benefits | Total Costs | UGF Amount |
|---------|--------------------------------|-------------|-------------|-----------|-----------|--------------|--------------|-------------|---------------|-----------------|-------|-------------|-----------------|-------------|------------|
| 08-5087 | Comm Veh Ci 1 | FT | A | GP | Anchorage | 200 | 13C / D | 12.0 | | 45,585 | 0 | 0 | 37,380 | 82,965 | 10,786 |
| 08-5091 | Comm Veh Ci 2 | FT | A | GP | Fairbanks | 203 | 15D / E | 12.0 | | 56,989 | 0 | 1,571 | 42,674 | 101,234 | 13,160 |
| 08-5092 | Office Assistant 2 | FT | A | GP | Anchorage | 200 | 10C / D | 12.0 | | 38,740 | 0 | 873 | 34,943 | 74,556 | 37,278 |
| 08-5095 | Weights & Measures Inspector 1 | FT | A | GP | Anchorage | 200 | 14B / C | 12.0 | | 47,869 | 0 | 4,347 | 40,085 | 92,301 | 0 |
| 08-5096 | Weights & Measures Inspector 1 | FT | A | GP | Anchorage | 200 | 14B / C | 12.0 | | 47,895 | 0 | 3,622 | 39,800 | 91,317 | 0 |
| 08-5097 | Comm Veh Ci 2 | FT | A | GP | Fairbanks | 203 | 15B / C | 12.0 | | 52,531 | 0 | 0 | 40,214 | 92,745 | 7,321 |
| 12-1758 | Comm Veh Ci 4 | FT | A | SS | Fairbanks | 203 | 17L / M | 12.0 | | 83,642 | 1,178 | 0 | 54,507 | 139,327 | 13,125 |
| 12-1760 | Comm Veh Ci 1 | FT | A | GP | Sterling | 200 | 13B / C | 12.0 | | 44,974 | 0 | 0 | 37,131 | 82,105 | 10,674 |
| 12-1761 | Comm Veh Ci 1 | FT | A | GP | Anchorage | 200 | 13B / C | 12.0 | | 44,857 | 0 | 0 | 37,083 | 81,940 | 10,652 |
| 25-0050 | Comm Veh Ci 4 | FT | A | GP | Anchorage | 200 | 17C / D | 12.0 | | 60,825 | 0 | 0 | 43,598 | 104,423 | 15,664 |
| 25-3366 | Comm Veh Ci 5 | FT | A | SS | Anchorage | 200 | 19E / F | 12.0 | | 81,738 | 1,151 | 0 | 53,730 | 136,619 | 17,761 |
| 25-3369 | Comm Veh Ci 1 | FT | A | GP | Anchorage | 200 | 13C / D | 12.0 | | 45,546 | 0 | 0 | 37,364 | 82,910 | 10,778 |
| 25-3370 | Comm Veh Ci 3 | FT | A | GP | Fairbanks | 203 | 16C / D | 12.0 | | 58,317 | 0 | 0 | 42,575 | 100,892 | 13,116 |
| 25-3371 | Grants Administrator 3 | FT | A | GP | Anchorage | 200 | 19B / C | 12.0 | | 68,860 | 0 | 0 | 46,876 | 115,736 | 22,828 |
| 25-3372 | Comm Veh Ci 1 | FT | A | GP | Anchorage | 200 | 13B / C | 12.0 | | 44,818 | 0 | 0 | 37,067 | 81,885 | 10,645 |
| 25-3373 | Comm Veh Ci 4 | FT | A | SS | Tok | 200 | 17K | 12.0 | | 77,626 | 1,093 | 0 | 52,053 | 130,772 | 52,671 |
| 25-3374 | Comm Veh Ci 3 | FT | A | GP | Anchorage | 200 | 16L / M | 12.0 | | 73,132 | 0 | 2,686 | 49,715 | 125,533 | 16,319 |
| 25-3375 | Comm Veh Ci 2 | FT | A | GP | Tok | 200 | 15D / E | 12.0 | | 54,683 | 0 | 4,068 | 42,752 | 101,503 | 13,195 |
| 25-3380 | State Metrologist 1 | FT | A | GP | Anchorage | 200 | 16B / C | 12.0 | | 55,666 | 0 | 0 | 41,493 | 97,159 | 0 |
| 25-3383 | Program Coordinator 2 | FT | A | SS | Anchorage | 200 | 20F | 12.0 | | 89,003 | 1,253 | 0 | 56,694 | 146,950 | 14,695 |
| 25-3413 | Comm Veh Ci 1 | FT | A | GP | Anchorage | 200 | 13B / C | 12.0 | | 44,415 | 0 | 0 | 36,903 | 81,318 | 10,571 |
| 25-3483 | Research Analyst 2 | FT | A | GP | Anchorage | 200 | 16C / D | 12.0 | | 56,073 | 0 | 0 | 41,659 | 97,732 | 14,660 |
| 25-3597 | Comm Veh Ci 2 | FT | A | GP | Tok | 200 | 15F / G | 12.0 | | 59,173 | 0 | 4,358 | 44,702 | 108,233 | 14,070 |
| 25-3740 | Ms Stand Spvr | FT | A | SS | Anchorage | 200 | 18F | 12.0 | | 77,938 | 1,097 | 0 | 52,180 | 131,215 | 0 |
| 25-3793 | Wm Inspect Trn | FT | A | GP | Anchorage | 200 | 12C / D | 12.0 | | 42,916 | 0 | 4,923 | 38,300 | 86,139 | 0 |
| 25-3805 | Grants Administrator 2 | FT | A | GP | Anchorage | 200 | 17G | 12.0 | | 68,952 | 0 | 0 | 46,914 | 115,866 | 40,553 |

Note: If a position is split, an asterisk (*) will appear in the Split/Count column. If the split position is also counted in the component, two asterisks (**) will appear in this column. [No valid job title] appearing in the Job Class Title indicates that the PCN has an invalid class code or invalid range for the class code effective date of this scenario.

Personal Services Expenditure Detail
Department of Transportation/Public Facilities

Scenario: FY2023 Governor (18673)
Component: Measurement Standards & Commercial Vehicle Compliance (2332)
RDU: Administration and Support (333)

| PCN | Job Class Title | Time Status | Retire Code | Barg Unit | Location | Salary Sched | Range / Step | Comp Months | Split / Count | Annual Salaries | COLA | Premium Pay | Annual Benefits | Total Costs | UGF Amount |
|-----|---------------------------------|------------------------|-------------|----------------|----------|--------------|--------------|-------------|---------------|-----------------|------|-------------|-----------------|---|------------|
| | | Total Positions | New | Deleted | | | | | | | | | | Total Salary Costs: | 3,584,786 |
| | | | | | | | | | | | | | | Total COLA: | 10,508 |
| | Full Time Positions: | 60 | 0 | 0 | | | | | | | | | | Total Premium Pay: | 82,819 |
| | Part Time Positions: | 0 | 0 | 0 | | | | | | | | | | Total Benefits: | 2,639,117 |
| | Non Permanent Positions: | 0 | 0 | 0 | | | | | | | | | | | |
| | Positions in Component: | 60 | 0 | 0 | | | | | | | | | | | |
| | Total Component Months: | 720.0 | | | | | | | | | | | | | |
| | | | | | | | | | | | | | | Total Pre-Vacancy: | 6,317,230 |
| | | | | | | | | | | | | | | Minus Vacancy Adjustment of 4.44%: | (280,530) |
| | | | | | | | | | | | | | | Total Post-Vacancy: | 6,036,700 |
| | | | | | | | | | | | | | | Plus Lump Sum Premium Pay: | 0 |
| | | | | | | | | | | | | | | Personal Services Line 100: | 6,036,700 |

| PCN Funding Sources: | Pre-Vacancy | Post-Vacancy | Percent |
|---|--------------------|---------------------|----------------|
| 1004 General Fund Receipts | 921,309 | 880,396 | 14.58% |
| 1005 General Fund/Program Receipts | 2,591,069 | 2,476,007 | 41.02% |
| 1039 U/A Indirect Cost Recovery | 118,481 | 113,220 | 1.88% |
| 1061 Capital Improvement Project Receipts | 2,003,969 | 1,914,979 | 31.72% |
| 1215 Uniform Commercial Registration fees | 682,402 | 652,098 | 10.80% |
| Total PCN Funding: | 6,317,230 | 6,036,700 | 100.00% |

Note: If a position is split, an asterisk (*) will appear in the Split/Count column. If the split position is also counted in the component, two asterisks (**) will appear in this column. [No valid job title] appearing in the Job Class Title indicates that the PCN has an invalid class code or invalid range for the class code effective date of this scenario.



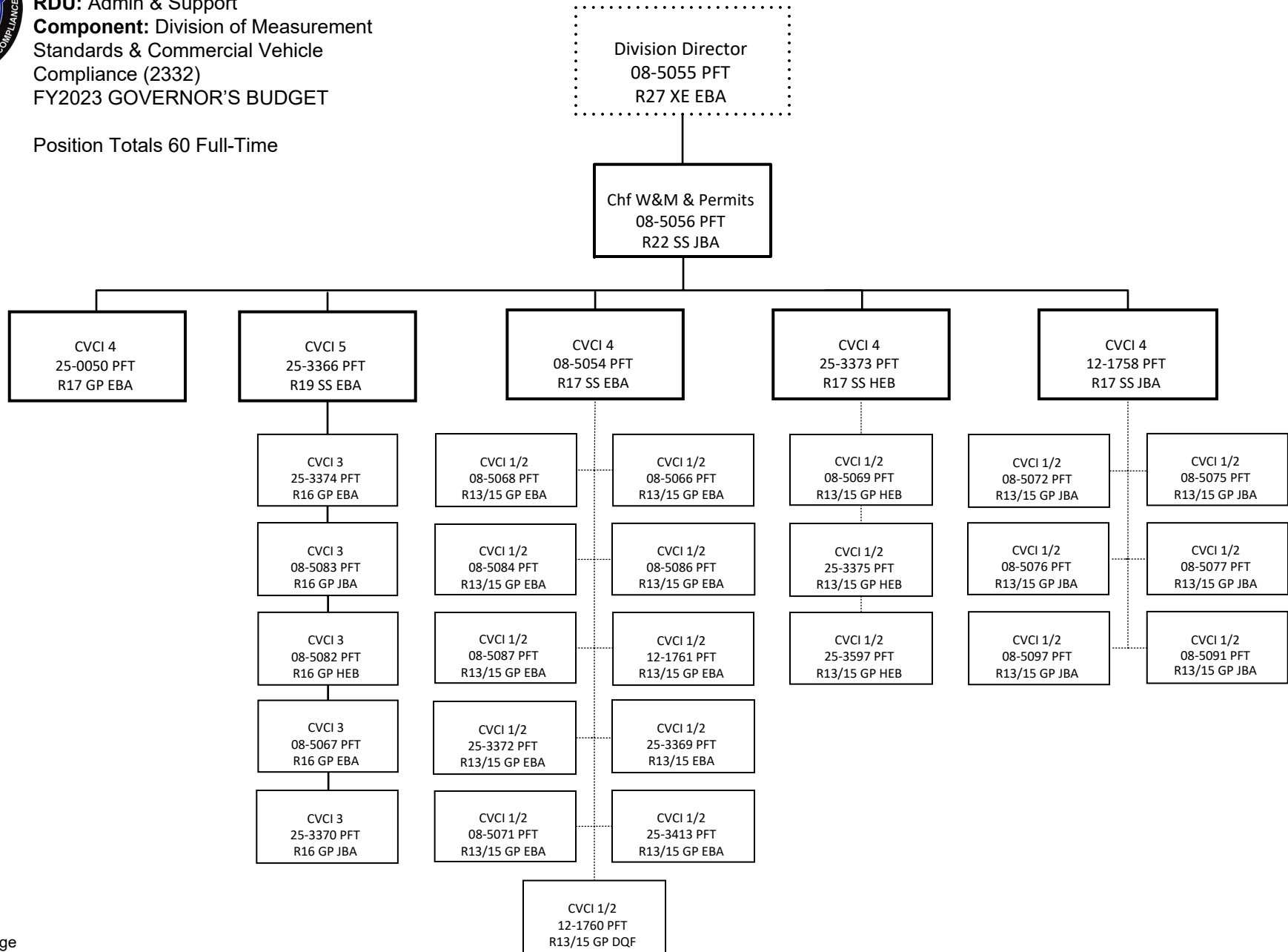
Department of Transportation & Public
Facilities

RDU: Admin & Support

Component: Division of Measurement
Standards & Commercial Vehicle
Compliance (2332)

FY2023 GOVERNOR'S BUDGET

Position Totals 60 Full-Time



Locations:
EBA – Anchorage
HEB – Tok
JBA – Fairbanks
DQF – Sterling
AWA – Juneau

****CVC – Commercial Vehicle Compliance**



Department of Transportation & Public Facilities

RDU: Admin & Support

Component: Division of Measurement Standards & Commercial Vehicle Compliance (2332)

FY2023 GOVERNOR'S BUDGET

Position Totals 60 Full-Time

