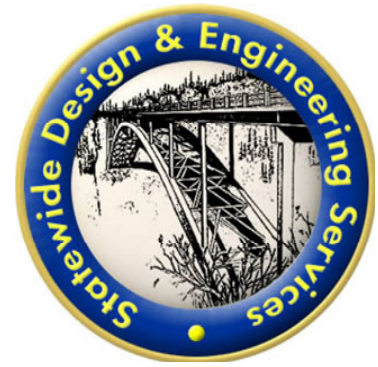
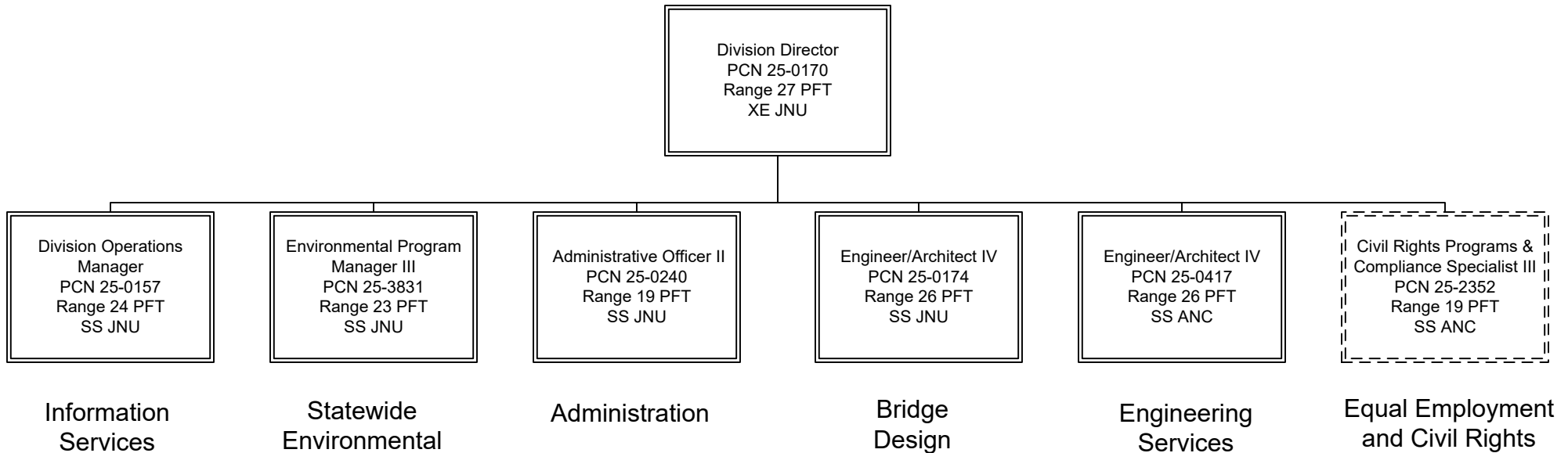


Department of Transportation & Public Facilities  
RDU: Design, Engineering and Construction  
Component: Statewide Design and Engineering Services (2357)  
FY2023 Governor's Budget  
PFT – 75, PT – 0, NP – 4



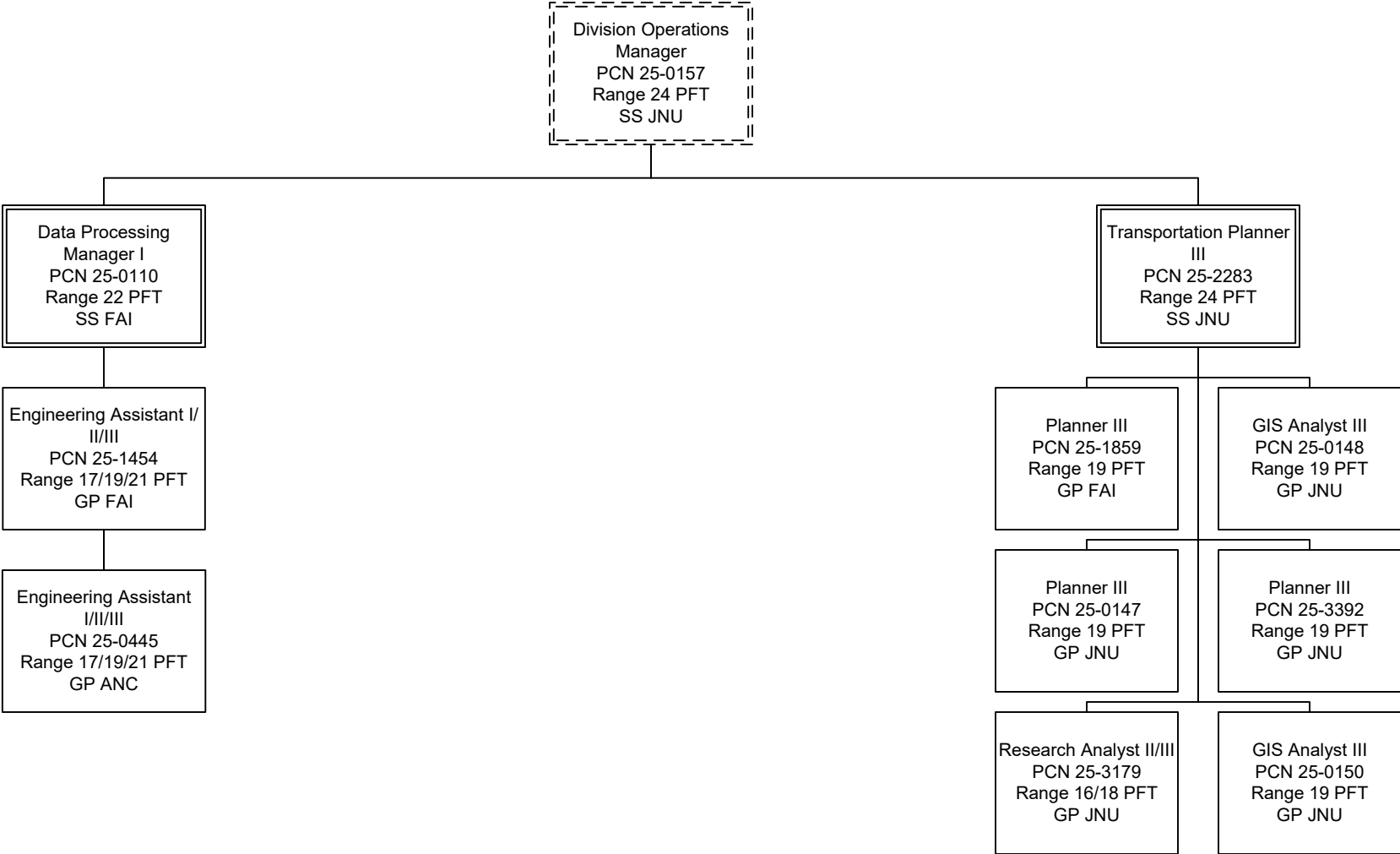
## CHIEF ENGINEER'S OFFICE



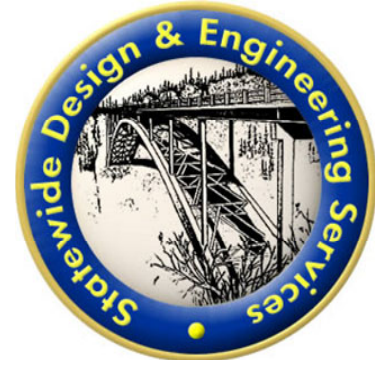
\*PCN 25-2352 is budgeted in the Equal Employment and Civil Rights component.



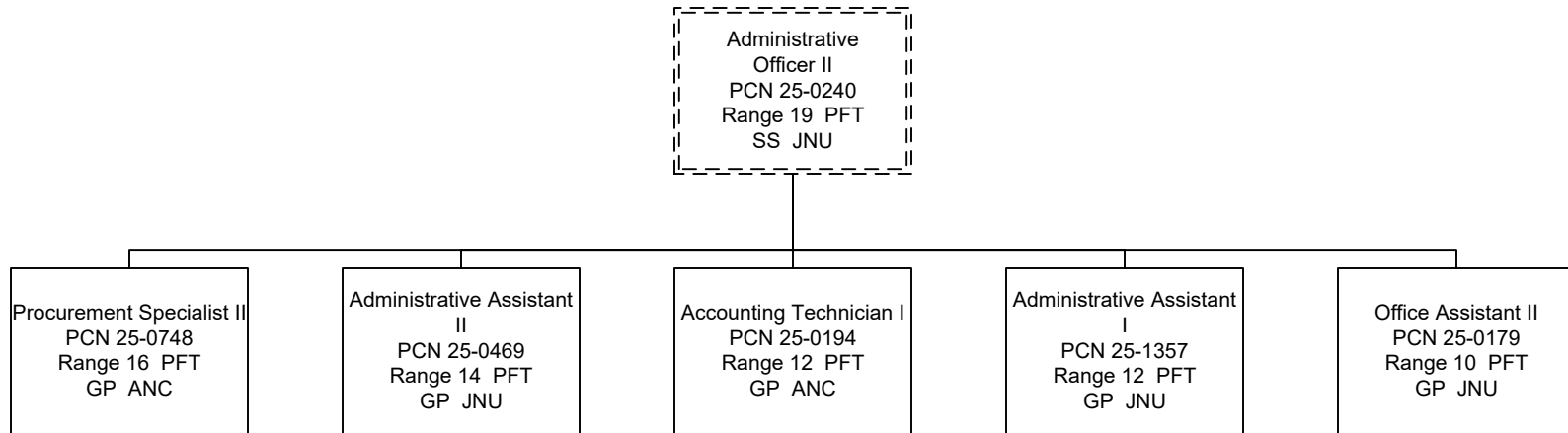
# INFORMATION SERVICES



Department of Transportation & Public Facilities  
RDU: Design, Engineering and Construction  
Component: Statewide Design and Engineering Services (2357)  
FY2023 Governor's Budget  
PFT – 75, PT – 0, NP – 4



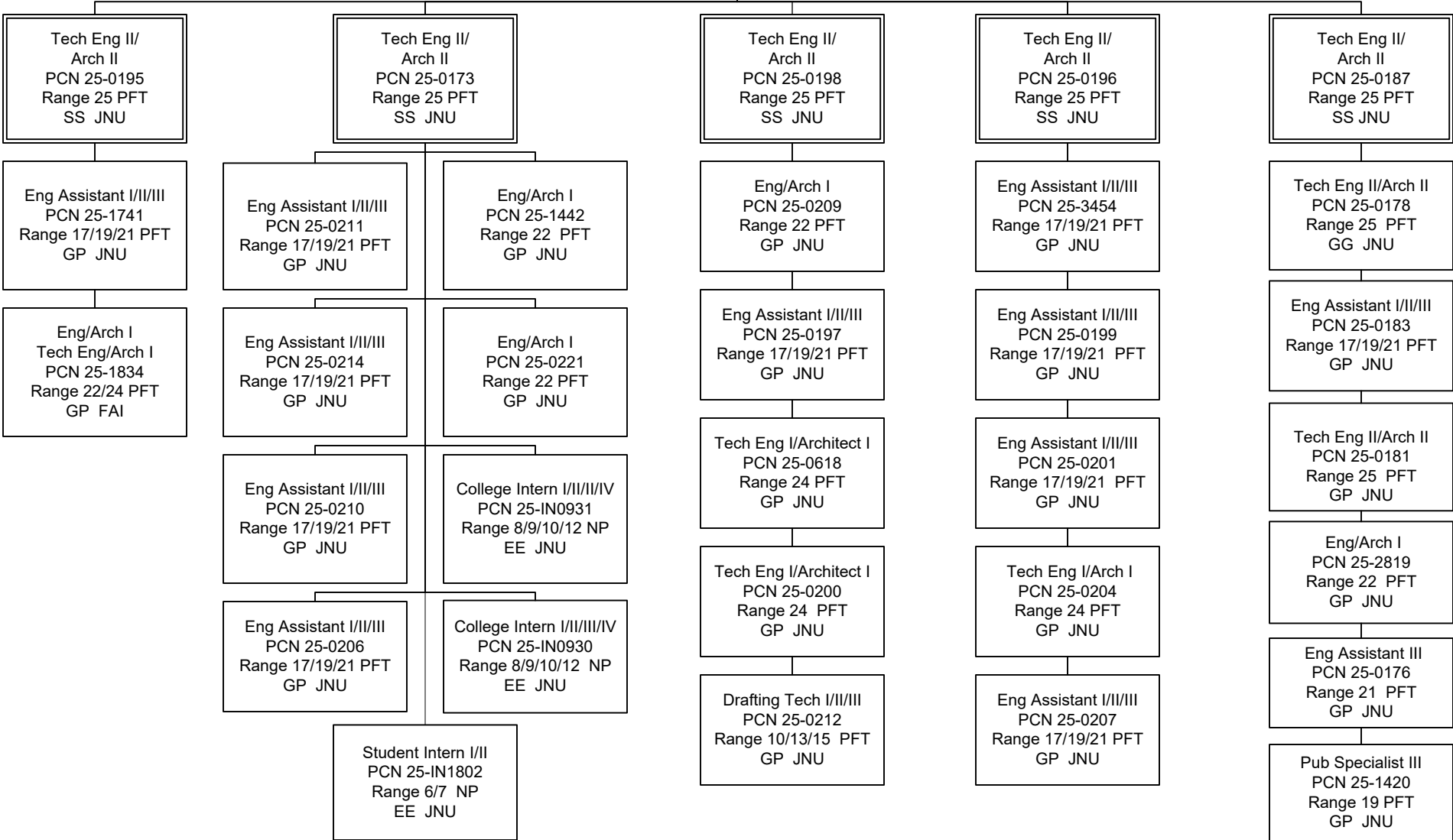
# ADMINISTRATION

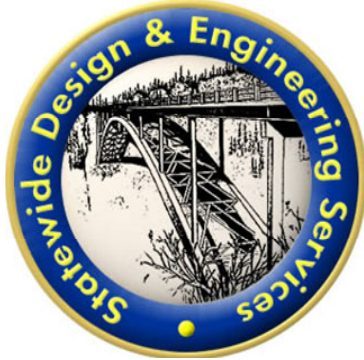




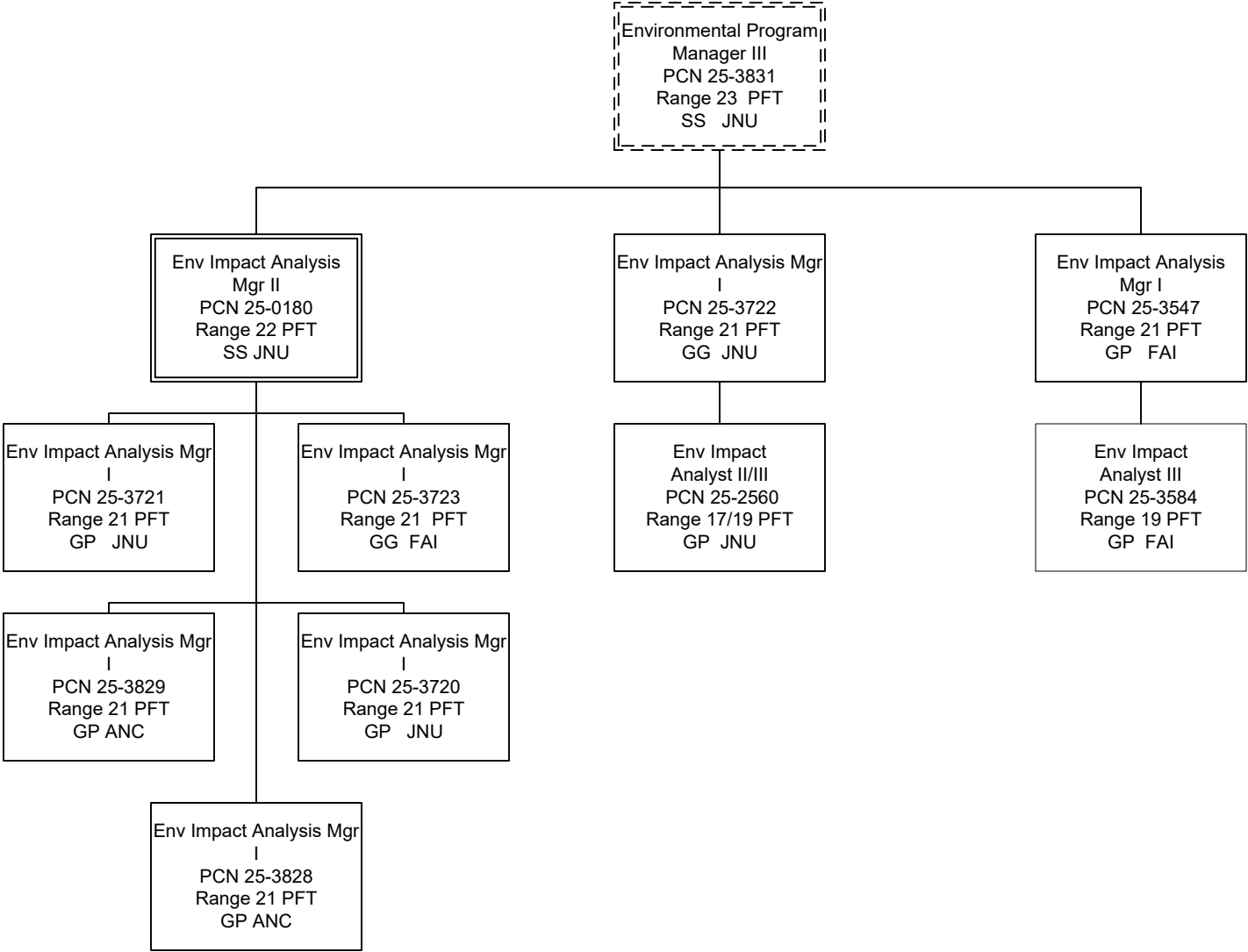
# BRIDGE DESIGN

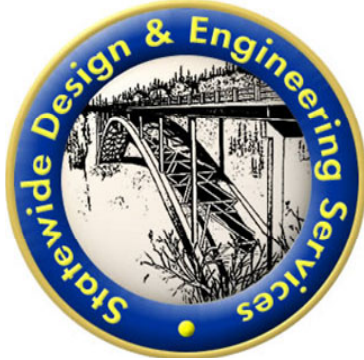
Engineer/Architect IV  
 PCN 25-0174  
 Range 26 PFT  
 SS JNU





# STATEWIDE ENVIRONMENTAL





# ENGINEERING SERVICES

