

# **State of Alaska FY2023 Governor's Operating Budget**

## **Department of Transportation/Public Facilities Central Design and Engineering Services Component Budget Summary**

**Component: Central Design and Engineering Services**

**Contribution to Department's Mission**

Develop, design and advertise projects that preserve and improve Alaska's transportation and public facilities infrastructure. The division also provides a wide range of technical services to the department, other state and federal agencies, local governments, utility companies, and the public.

**Core Services**

- Develop capital improvement projects (CIP) from the planning stage to final preparation of plans, specifications and estimates for construction advertising including survey, preliminary design, environmental, traffic and safety, materials, right-of-way, utilities, and design elements.
- Provide technical assistance during construction.
- Ensure environmental compliance services during construction and maintenance and operations of facilities.
- Complete and maintain airport master plans, airport layout plans, and airport certification documents.
- Provide design input for all airport leasing actions.
- Complete traffic studies and accident analysis.
- Conduct hydrological studies, materials testing, and surveying.
- Process utility, right-of-way (ROW) and traffic permits.
- Acquire and vacate right-of-way as required to support the department's mission.
- Conduct active public involvement and issue resolution efforts throughout the project development process.
- Develop CIP project bid packages through advertisement and contract award.
- Resolve bidding disputes.
- Manage the state's right-of-way per regulations and statutes.

**Major Component Accomplishments in 2021**

- Managed 285 projects (combined highway 250 and aviation 35) in various stages of development.
- Delivered a full program of \$529.70 (combined highway \$365.0 and aviation \$164.7) bid-ready projects to construction despite COVID-19 related impacts. Representative projects delivered include: Seward Highway Mile Post 75-90 Ingram Circle Girdwood Road and Bridge Phase 2, Seward Highway Mile Post 17-22 Rehabilitation, Dowling Road / Seward Highway Interchange Reconstruction, Homer East Hill Road Pavement Preservation, Parks Highway Bridge Replacement, Montana Circle, Sheep Circle, and Goose Circle, Highway Safety Improvement Program (HSIP): C Street: Tudor and Dimond Intersections, HSIP: Anchorage Pedestrian Lighting, Minnesota Drive: Tudor to 15<sup>th</sup> Avenue Pavement Preservation, Sterling Highway Mile Post 45-60 Reconstruction Construction Manager / General Contractor (first phase of construction underway and design support ongoing), Parks Highway Seward Meridian Parkway to Lucas Road Pavement Maintenance, Anchorage Metropolitan Area Transportation Solution: Airport Heights: Debarr to Glenn Hwy Pavement Preservation, Bethel Airport Main Runway Reconstruction, Anchorage Taxiway K, G1, and J Improvements, Anchorage Terminal Loop Road Improvements, and Newtok Airport Relocation.
- Processed 697 permits for driveways, approach roads, utilities, and other right-of-way encroachments collecting approximately \$328.1 of general program receipts revenue.
- Programs to convert street lighting to light-emitting diode fixtures to reduce electrical costs are underway throughout the region.
- Continue to make permanent repairs to the November 30, 2018 earthquake, including program management and design and construction of permanent repair projects. As of September, 10 percent of the repairs are complete, 35 percent have advanced to construction, 50 percent are in final design, three percent are in preliminary design, and two percent will be addressed with an alternate project. Representative projects include Emergency Embankment and Drainage Repairs; Glenn Highway at Mirror Lake, Glenn/Parks Interchange; Seward Highway Mile Post 50; Mat-Su Borough (MSB) Road Repairs, and Knik River Road Mile Post 10.5.
- The first phase of renovations to the MSB District Office has been completed and this office is coordinating the second phase to be constructed this winter/spring. The initial staffing selections have been made for a project delivery team that will report to this office in the upcoming weeks. Central Region is excited to offer a Department

of Transportation and Public Facilities (DOT&PF) office in the MSB area to better serve the transportation needs in this growing part of the state.

- The Parks Highway Access Development Permits agreement, entered into between DOT&PF and MSB, recognizing and pre-approving coordinated public access points from MSB-owned parcels onto the Parks Highway corridor, has been a significant success with expected ongoing benefits to safety and private development. This multiple year corporative effort has come to fruition and establishes a model to be used in other similar highway corridors.

## **Key Component Challenges**

- Increased volume and complexity of utility relocations continues to exceed both the department's and utility companies' ability to deliver, resulting in delays to construction despite increased coordination and effort.
- Lack of an automated utility permit application system and utility information management system identifying the location of installed utilities continues to cause delays in permitting and project development.
- Insufficient staff and resources in federal agencies to issue permits, collect revenue and conduct reviews for construction projects.
- Federal regulations continue to preclude the timely acquisition of native allotment lands in Bureau of Indian Affairs trust status that are necessary for improvements to rural airports and roads.
- There are many state-owned roads that have no ROW mapping causing hours of research to determine if there is ROW and its width.
- Efficient easy transfer of management authority of state-owned land between Department of Natural Resources and DOT&PF.
- Federal safety funds are restricted from use for enforcement support in Safety Corridors. Yet enforcement is nationally-recognized alongside education and engineering as critical to reducing serious injury and death by nearly half (as shown in Central Region Safety Corridor Audits).
- Central Region has over 60 percent of Alaska's serious injury crashes and population. It also has the top ten bottlenecks for congestion in the state.
- Freight speeds on older roads between ports and cities currently move at 25 to 35 MPH, which is Grade F nationally.
- Broadband initiative utility permits have the potential to exceed the \$10.0 permit cap, reducing potential revenue.
- The results of the 2020 census classifies the MSB as a Metropolitan Planning Organization (MPO). Work is ongoing to establish the MPO structure and this will alter funding allocations and the manner in which projects are delivered within the MPO boundary, similar to AMATS and FAST in Anchorage and Fairbanks, respectively.

## **COVID-19 Response and Telework Challenges**

- Returning teleworking staff to the office in July had its challenges but overall went better than anticipated. Returning staff to a telework posture was also smoother than anticipated.
- Purchasing is working to purchase laptops for all employees to enable efficient transitions between office and remote worksites. Laptops capable of running AutoCAD design software are expensive and it will be spread out over multiple budget years.
- Central Region established consistent routine telework guidance for use beyond the pandemic, adding an alternate work schedule option similar to the Regular Day Off or 4 Day Workweek options.

## **Significant Changes in Results to be Delivered in FY2023**

- The pending Infrastructure Investment and Jobs Act (IIJA) will potentially increase Federal Highway Administration (FHWA) funding by 40 percent and double Federal Aviation Administration funding over a five-year funding period. The bulk of FHWA funding increase will potentially be in the form of competitive grant opportunities on top of the 40 percent increase to formula funds. This significant increase in federal funding will push DOT&PF resources beyond their limits. Strategic discussions are ongoing regarding how to deliver projects using these additional funds and how to make the best use of these funds towards Alaska's transportation needs. Additional staff and resources will be needed to deliver the IIJA funding as currently envisioned.
- Central Region maintains steady and ongoing year-by-year reductions in deaths and injuries regardless of traffic and population increases. Supporting this effort, Central Region has begun full redesign of several of the worst road segments to reduce pedestrian, and other vulnerable user crashes along all top-ranking state roads by 20

percent or more. These projects are active in design, but design delivery of these projects is greater than one year.

### Statutory and Regulatory Authority

AS 02.15, Alaska Aeronautics Act of 1949  
AS 08.48, Architects, Engineers, Land Surveyors, and Landscape Architects  
AS 08.87, Real Estate Appraisers  
AS 19, Highways and Ferries  
AS 29.60, Municipal Government State Programs  
AS 30.30, Navigation, Harbors, Shipping, and Transportation Facilities, Abandoned and Derelict Vessels  
AS 34.60, Property, Relocation Assistance and Real Property Acquisition Practices  
AS 35, Public Buildings, Works, and Improvements  
AS 36, Public Contracts  
17 AAC 15 Transportation and Public Facilities  
CFR 14 Aeronautics  
CFR 15 Environment  
CFR 16 Environment  
CFR 23 Highways  
CFR 33 Environment  
CFR 41 Contracts  
CFR 42 Environment/ADA  
CFR 43 Lands  
CFR 49 Transportation

Contact Information
<p><b>Contact:</b> Wolfgang Junge, P.E., Central Region Director <b>Phone:</b> (907) 269-0770 <b>E-mail:</b> wolfgang.junge@alaska.gov</p>

Central Design and Engineering Services Personal Services Information				
Authorized Positions			Personal Services Costs	
	FY2022 Management Plan	FY2023 Governor		
Full-time	165	165	Annual Salaries	15,536,567
Part-time	15	15	COLA	54,992
Nonpermanent	7	7	Premium Pay	287,168
			Annual Benefits	9,758,445
			<i>Less 6.73% Vacancy Factor</i>	<i>(1,724,572)</i>
			Lump Sum Premium Pay	0
<b>Totals</b>	<b>187</b>	<b>187</b>	<b>Total Personal Services</b>	<b>23,912,600</b>

Position Classification Summary					
Job Class Title	Anchorage	Fairbanks	Juneau	Others	Total
Administrative Assistant 1	2	0	0	0	2
Administrative Assistant 3	1	0	0	0	1
Administrative Officer 1	1	0	0	0	1
College Intern 2	2	0	0	0	2
College Intern 4	4	0	0	0	4
Drafting Technician 3	4	0	0	0	4
Electrical Engineer	1	0	0	0	1
Engineer/Architect 1	20	0	0	0	20
Engineer/Architect 2	7	0	0	0	7
Engineer/Architect 3	10	0	0	0	10
Engineer/Architect 4	6	0	0	1	7
Engineer/Architect 5	1	0	0	0	1
Engineering Assistant 1	5	0	0	0	5
Engineering Assistant 2	20	0	0	0	20
Engineering Assistant 3	31	0	0	0	31
Engineering Geologist 1	2	0	0	0	2
Env Imp A Mgr 1	1	0	0	0	1
Environmental Impact Analyst 1	3	0	0	0	3
Environmental Impact Analyst 2	1	0	0	0	1
Environmental Impact Analyst 3	8	0	0	0	8
Gis Analyst 2	3	0	0	0	3
Land Survey Manager 1	1	0	0	0	1
Land Surveyor 1	3	0	0	0	3
Land Surveyor 2	1	0	0	0	1
Mlt Jrny	3	0	0	0	3
Mtlb Foreman	1	0	0	0	1
Mtlb Subjrny 1	1	0	0	0	1
Mtlb Subjrny 2	3	0	0	0	3
Mtlb Subjrny 4	1	0	0	0	1
Office Assistant 1	1	0	0	0	1
Office Assistant 2	3	0	0	0	3
Regional Engineering Geologist	1	0	0	0	1
Right-Of-Way Agent 1	2	0	0	0	2
Right-Of-Way Agent 2	9	0	0	0	9
Right-Of-Way Agent 3	7	0	0	0	7
Right-Of-Way Agent 4	3	0	0	0	3

**Position Classification Summary**

<b>Job Class Title</b>	<b>Anchorage</b>	<b>Fairbanks</b>	<b>Juneau</b>	<b>Others</b>	<b>Total</b>
Right-Of-Way Assistant	2	0	0	0	2
Survey Lead	3	0	0	0	3
Survey, Journey	3	0	0	0	3
Survey, Sub-Journey 2	1	0	0	0	1
Tech Eng/Arch 1	4	0	0	0	4
<b>Totals</b>	<b>186</b>	<b>0</b>	<b>0</b>	<b>1</b>	<b>187</b>

**Component Detail All Funds**  
**Department of Transportation/Public Facilities**

**Component:** Central Design and Engineering Services (2298)  
**RDU:** Design, Engineering and Construction (526)

Non-Formula Component

	<b>FY2021 Actuals</b>	<b>FY2022 Conference Committee</b>	<b>FY2022 Authorized</b>	<b>FY2022 Management Plan</b>	<b>FY2023 Governor</b>	<b>FY2022 Management Plan vs FY2023 Governor</b>	
71000 Personal Services	21,963.2	24,410.6	24,410.6	24,410.6	23,912.6	-498.0	-2.0%
72000 Travel	0.3	22.4	22.4	22.4	22.4	0.0	0.0%
73000 Services	863.2	994.7	994.7	994.7	975.2	-19.5	-2.0%
74000 Commodities	145.9	159.9	159.9	159.9	159.9	0.0	0.0%
75000 Capital Outlay	0.0	5.0	5.0	5.0	5.0	0.0	0.0%
77000 Grants, Benefits	0.0	0.0	0.0	0.0	0.0	0.0	0.0%
78000 Miscellaneous	0.0	0.0	0.0	0.0	0.0	0.0	0.0%
<b>Totals</b>	<b>22,972.6</b>	<b>25,592.6</b>	<b>25,592.6</b>	<b>25,592.6</b>	<b>25,075.1</b>	<b>-517.5</b>	<b>-2.0%</b>
<b>Fund Sources:</b>							
1004 Gen Fund (UGF)	106.7	278.5	278.5	278.5	92.8	-185.7	-66.7%
1005 GF/Prgm (DGF)	321.7	597.2	597.2	597.2	585.2	-12.0	-2.0%
1007 I/A Rcpts (Other)	16.1	42.1	42.1	42.1	41.0	-1.1	-2.6%
1061 CIP Rcpts (Other)	22,528.1	24,674.8	24,674.8	24,674.8	24,356.1	-318.7	-1.3%
<b>Unrestricted General (UGF)</b>	<b>106.7</b>	<b>278.5</b>	<b>278.5</b>	<b>278.5</b>	<b>92.8</b>	<b>-185.7</b>	<b>-66.7%</b>
<b>Designated General (DGF)</b>	<b>321.7</b>	<b>597.2</b>	<b>597.2</b>	<b>597.2</b>	<b>585.2</b>	<b>-12.0</b>	<b>-2.0%</b>
<b>Other Funds</b>	<b>22,544.2</b>	<b>24,716.9</b>	<b>24,716.9</b>	<b>24,716.9</b>	<b>24,397.1</b>	<b>-319.8</b>	<b>-1.3%</b>
<b>Federal Funds</b>	<b>0.0</b>	<b>0.0</b>	<b>0.0</b>	<b>0.0</b>	<b>0.0</b>	<b>0.0</b>	<b>0.0%</b>
<b>Positions:</b>							
Permanent Full Time	164	164	164	165	165	0	0.0%
Permanent Part Time	15	15	15	15	15	0	0.0%
Non Permanent	7	7	7	7	7	0	0.0%

**Change Record Detail - Multiple Scenarios with Descriptions**  
**Department of Transportation/Public Facilities**

**Component:** Central Design and Engineering Services (2298)

**RDU:** Design, Engineering and Construction (526)

Scenario/Change Record Title	Trans Type	Totals	Personal Services	Travel	Services	Commodities	Capital Outlay	Grants, Benefits	Miscellaneous	Positions		NP
										PFT	PPT	
***** Changes From FY2022 Conference Committee To FY2022 Authorized *****												
<b>FY2022 Conference Committee</b>												
	ConfCom	25,592.6	24,410.6	22.4	994.7	159.9	5.0	0.0	0.0	164	15	7
1004 Gen Fund		278.5										
1005 GF/Prgm		597.2										
1007 I/A Rcpts		42.1										
1061 CIP Rcpts		24,674.8										
<b>Subtotal</b>		<b>25,592.6</b>	<b>24,410.6</b>	<b>22.4</b>	<b>994.7</b>	<b>159.9</b>	<b>5.0</b>	<b>0.0</b>	<b>0.0</b>	<b>164</b>	<b>15</b>	<b>7</b>
***** Changes From FY2022 Authorized To FY2022 Management Plan *****												
<b>Add Engineer/Architect 4 (25-3868) for Improved Efficiencies</b>												
	PosAdj	0.0	0.0	0.0	0.0	0.0	0.0	0.0	0.0	1	0	0
Add full-time Engineer/Architect 4 (25-3868) range 26, located in Matanuska-Susitna (Mat-Su) Valley, to serve as a regional group chief in the new office in the Mat-Su area of the central region. The Mat-Su branch office will consist of pre-construction staff that will focus on the needs of the Mat-Su area and our northern services areas.												
<b>Subtotal</b>		<b>25,592.6</b>	<b>24,410.6</b>	<b>22.4</b>	<b>994.7</b>	<b>159.9</b>	<b>5.0</b>	<b>0.0</b>	<b>0.0</b>	<b>165</b>	<b>15</b>	<b>7</b>
***** Changes From FY2022 Management Plan To FY2023 Governor *****												
<b>FY2023 PERS Actuarial Rate Adjustment to 24.79% Ch9 SLA2021 (SB55)</b>												
	SalAdj	-787.1	-787.1	0.0	0.0	0.0	0.0	0.0	0.0	0	0	0
1004 Gen Fund		-9.6										
1005 GF/Prgm		-14.7										
1007 I/A Rcpts		-1.4										
1061 CIP Rcpts		-761.4										
Includes: FY2023 Adjustment for PERS ARM Board Approved Rate of 24.79% (from 30.11%): \$-787.1												
<b>FY2023 Labor, Trades, and Crafts Salary and Benefit Adjustments</b>												
	SalAdj	42.4	42.4	0.0	0.0	0.0	0.0	0.0	0.0	0	0	0
1061 CIP Rcpts		42.4										
FY2023 Labor, Trades, and Crafts 3.25% COLA: \$42.4												
<b>FY2023 Salary and Benefit Adjustments</b>												
	SalAdj	246.7	246.7	0.0	0.0	0.0	0.0	0.0	0.0	0	0	0
1004 Gen Fund		6.3										
1005 GF/Prgm		2.7										
1007 I/A Rcpts		0.3										



**Change Record Detail - Multiple Scenarios with Descriptions**  
**Department of Transportation/Public Facilities**

**Component:** Central Design and Engineering Services (2298)

**RDU:** Design, Engineering and Construction (526)

Scenario/Change Record Title	Trans Type	Totals	Personal Services	Travel	Services	Commodities	Capital Outlay	Grants, Benefits	Miscellaneous	Positions		NP
										PFT	PPT	
1061 CIP Rcpts		237.4										
Includes: FY2023 Supervisory Unit 1% COLA: \$53.1												
FY2023 Change General Government Unit (GG, GP, GY, GZ) - SBS, and Risk Management Rates: \$98.2												
FY2023 Change Labor, Trades, and Crafts LTC (LL) - SBS and Risk Management Rates: \$8.3												
FY2023 Change Excluded Employees (EE) - Health Insurance from \$1,555 to \$1,685 per member, SBS, and Risk Management Rates: \$0.6												
FY2023 Change Supervisory Employees (SS) - Health Insurance from \$1,555 to \$1,685; SBS and Risk Management Rates: \$83.5												
FY2023 Change Partially Exempt & Exempt Executive (EE) - Health Insurance from \$1,555 to \$1,685; SBS and Risk Management Rates: \$3.0												
<b>Cost Savings Realized Through OIT PBX Phone Rate Decreases</b>												
1004 Gen Fund	Dec	-19.5	0.0	0.0	-19.5	0.0	0.0	0.0	0.0	0	0	0
The DOT&PF has realized a cost savings through the OIT rate decrease on PBX.												
<b>Realign PERS Rate Adjustment by Fund Source Ch9 SLA2021 (SB55)</b>												
1004 Gen Fund	FndChg	-162.9	0.0	0.0	0.0	0.0	0.0	0.0	0.0	0	0	0
1061 CIP Rcpts		162.9										
Remove one-time UGF subsidy assigned in SB55 fiscal note (Ch 9 SLA 2021).												
<b>Totals</b>		<b>25,075.1</b>	<b>23,912.6</b>	<b>22.4</b>	<b>975.2</b>	<b>159.9</b>	<b>5.0</b>	<b>0.0</b>	<b>0.0</b>	<b>165</b>	<b>15</b>	<b>7</b>

**Line Item Detail (1676)**  
**Department of Transportation/Public Facilities**  
**Travel**

**Component:** Central Design and Engineering Services (2298)

Line Number	Line Name		FY2021 Actuals	FY2022 Management Plan	FY2023 Governor
2000	Travel		0.3	22.4	22.4
Object Class	Servicing Agency	Explanation	FY2021 Actuals	FY2022 Management Plan	FY2023 Governor
<b>2000 Travel Detail Totals</b>			<b>0.3</b>	<b>22.4</b>	<b>22.4</b>
2000	In-State Employee Travel	The Preconstruction Engineer, section chiefs, and functional managers of Preliminary Design and Environmental, Highway and Aviation Design, Materials, Utilities, Traffic, Right-of-Way travel for administration and coordination of projects, field reviews, permit inspections, surveys, staff meetings, hearings, training and conferences. This includes lodging, meals, and incidentals in association with the above travel.	0.3	19.7	19.7
2002	Out of State Employee Travel	Out of state travel and per diem for division/section chiefs or other employees. Travel is usually for administrative, conventions, meetings, and training not available in-state.	0.0	2.7	2.7

**Line Item Detail (1676)**  
**Department of Transportation/Public Facilities**  
**Services**

**Component:** Central Design and Engineering Services (2298)

Line Number	Line Name		FY2021 Actuals	FY2022 Management Plan	FY2023 Governor
3000	Services		863.2	994.7	975.2
Object Class	Servicing Agency	Explanation	FY2021 Actuals	FY2022 Management Plan	FY2023 Governor
<b>3000 Services Detail Totals</b>			<b>863.2</b>	<b>994.7</b>	<b>975.2</b>
3000	Education Services	Training services and/or conference fees, membership fees, and employee tuition (excluding Information Technology).	24.8	21.0	21.0
3001	Financial Services	Credit card processing fees for permits paid for by credit card: driveway permits, encroachment permits, lane closure permits, property management permits for use of rights-of way, etc.	0.5	0.2	0.2
3003	Information Technology	Information technology (IT) training, IT consulting, IT equipment leases, software licensing, and software maintenance primarily for upgrades of AutoCAD licenses and aviation building network upgrades. Includes Microsoft Enterprise Agreement.	116.8	141.1	141.1
3004	Telecommunications	Long distance, local phone service, data communication, and cellular service provided by vendors.	5.3	5.0	5.0
3005	Health Services	Audiometric Tests CR Materials Lab.	1.3	0.0	0.0
3006	Delivery Services	Postage, courier and freight expense.	18.5	15.0	15.0
3007	Advertising and Promotions	Advertising and legal notices for non-project specific publications.	1.4	1.5	1.5
3008	Utilities	Utility expenses for property managed by the Right-of-Way section.	0.7	1.5	1.5

**Line Item Detail (1676)**  
**Department of Transportation/Public Facilities**  
**Services**

**Component:** Central Design and Engineering Services (2298)

Object Class	Servicing Agency	Explanation	FY2021 Actuals	FY2022 Management Plan	FY2023 Governor
<b>3000 Services Detail Totals</b>			<b>863.2</b>	<b>994.7</b>	<b>975.2</b>
3009	Structure/Infrastructure/Land	Expenses for snow removal, janitorial, lawn care, and other services for property managed by the Right-of-Way section.	2.2	1.0	1.0
3010	Equipment/Machinery	Maintenance agreements for four fax machines; five Sharp copiers in: Preliminary and Engineering Design Services; Aviation and Highway Design; Right-of-Way, Traffic and Utilities; and repairs to survey and materials testing equipment.	49.4	47.6	47.6
3011	Other Services	Safety Services, copier click fees for excess copies, and US Travel Fee.	1.0	5.0	5.0
3011	Other Services	Central Region Construction's allocated portion of annual software license fee and associated contractor fee for performing annual chemical database inventory updates.	0.4	0.0	0.0
3017	Inter-Agency Information Technology Admin - Department-wide Non-Telecommunications	Computer services provided by the Department of Administration, such as central server, data storage, printing, network services, open connect, and task order system.	305.8	422.4	409.4
3018	Inter-Agency Information Technology Admin - Department-wide Telecommunications	Telecommunication services provided by the Department of Administration such as basic telephone services, equipment and features, dedicated voice/data line service, statewide paging, two-way radio, and video conference.	73.0	60.0	53.5
3021	Inter-Agency Mail Admin - Department-wide	Chargeback fees for central mail services such as mailing vendor payments and payroll warrants.	0.7	1.0	1.0

**Line Item Detail (1676)**  
**Department of Transportation/Public Facilities**  
**Services**

**Component:** Central Design and Engineering Services (2298)

Object Class		Servicing Agency	Explanation	FY2021 Actuals	FY2022 Management Plan	FY2023 Governor
<b>3000 Services Detail Totals</b>				<b>863.2</b>	<b>994.7</b>	<b>975.2</b>
3022	Inter-Agency Human Resources	Admin - Department-wide	Chargeback fees for human resource services such as labor relations, position classification and payroll processing.	0.0	113.6	113.6
3022	Inter-Agency Human Resources	Gov - Department-wide	Office of Management and Budget - Budget Analyst support.	0.9	0.0	0.0
3024	Inter-Agency Legal	Law - Department-wide	Legal services provided by the Department of Law.	5.4	5.0	5.0
3026	Inter-Agency Insurance	Admin - Department-wide	Risk Management expense for Property/Casualty Insurance for Right of Way Properties.	18.6	19.0	19.0
3027	Inter-Agency Financial	Admin - Department-wide	Chargeback fee for HRM/IRIS/ALDER.	66.6	21.1	21.1
3028	Inter-Agency Americans with Disabilities Act Compliance	Admin - Department-wide	Chargeback fees for the statewide coordinator for the Americans with Disabilities Act (ADA).	1.6	1.7	1.7
3029	Inter-Agency Education/Training	Admin - Department-wide	Alaska Statutes.	0.0	0.1	0.1
3029	Inter-Agency Education/Training	E&ED - Department-wide	Procurement Training.	0.0	0.1	0.1
3031	Inter-Agency Construction	Trans - Statewide Aviation (1811)	Survey instrument fee.	0.5	0.4	0.4
3036	Inter-Agency Safety	Trans - International Airport Systems (1649)	Badge fees for Ted Steven's Anchorage International Airport.	0.5	0.5	0.5
3037	State Equipment Fleet	Trans - State Equipment Fleet (2791)	State Equipment Fleet operating and replacement fees, credit card fuel, and vehicle maintenance and repairs. Budgeted amounts, if any, are for operating budget vehicles only; prior year actuals amount includes the cost of capital improvement project (CIP) vehicles, which are funded through an unbudgeted reimbursable services agreement.	81.2	0.0	0.0

**Line Item Detail (1676)**  
**Department of Transportation/Public Facilities**  
**Services**

**Component:** Central Design and Engineering Services (2298)

Object Class		Servicing Agency	Explanation	FY2021 Actuals	FY2022 Management Plan	FY2023 Governor
<b>3000 Services Detail Totals</b>				<b>863.2</b>	<b>994.7</b>	<b>975.2</b>
3038	Inter-Agency Management/Consulting	Admin - Department-wide	Shared Services of Alaska accounts payable and travel and expense activities.	42.3	67.4	67.4
3038	Inter-Agency Management/Consulting	Trans - Central Design & Eng Svcs (2298)	Construction staff support to the Right-of-Way section to perform field inspections for Right-of-Way permits issued by Central Region and review of traffic control plans not funded by a construction project.	29.9	30.0	30.0
3038	Inter-Agency Management/Consulting	Trans - Central Design & Eng Svcs (2298)	Construction staff support to the Utilities section for review of traffic control plans not funded by a construction project.	7.8	8.0	8.0
3039	DOT/PF Time & Equipment System		Vehicle usage billed to the operating budget based on established rates and actual usage of vehicles.	6.1	5.5	5.5

**Line Item Detail (1676)**  
**Department of Transportation/Public Facilities**  
**Commodities**

**Component:** Central Design and Engineering Services (2298)

Line Number	Line Name		FY2021 Actuals	FY2022 Management Plan	FY2023 Governor
4000	Commodities		145.9	159.9	159.9
Object Class	Servicing Agency	Explanation	FY2021 Actuals	FY2022 Management Plan	FY2023 Governor
<b>4000 Commodities Detail Totals</b>			<b>145.9</b>	<b>159.9</b>	<b>159.9</b>
4000	Business	Consumable office supplies, subscriptions, furniture and small tools with a value of less than \$5,000 per item used in daily operations.	54.4	60.8	60.8
4000	Business	Computers, printers and small printers. The component is on a four-year computer replacement schedule for a permanent full-time staff of 172. Computers for administrative staff are approximately \$1.5 each, and \$2.0 for engineering staff.	56.1	59.1	59.1
4002	Household/Institutional	Gloves and rubber boots for the CR Materials Lab	0.5	0.0	0.0
4003	Scientific and Medical	Laboratory and non-laboratory supply expenditures charged to the Central Region Materials Lab Cost Allocation Plan.	28.6	30.0	30.0
4004	Safety	Safety Supplies for Central Region Materials Lab and Survey Section	1.1	0.0	0.0
4013	Lube Oils/Grease/Solvents	Lube Oils/Grease/Solvents.	1.3	0.0	0.0
4014	Bottled Gas	Bottled Gas.	0.2	0.0	0.0
4015	Parts and Supplies	Parts and Supplies for the Central Region Materials and Survey Instrument Labs Cost Allocation Plans.	2.7	0.0	0.0
4019	Small Tools/Minor Equipment	Repair and maintenance supplies	1.0	10.0	10.0

**Line Item Detail (1676)**  
**Department of Transportation/Public Facilities**  
**Commodities**

**Component:** Central Design and Engineering Services (2298)

Object Class	Servicing Agency	Explanation	FY2021 Actuals	FY2022 Management Plan	FY2023 Governor
<b>4000 Commodities Detail Totals</b>			<b>145.9</b>	<b>159.9</b>	<b>159.9</b>
include small tools, equipment fuel, paint, survey markers, and parts used by materials, geology and survey crews.					



**Line Item Detail (1676)**  
**Department of Transportation/Public Facilities**  
**Capital Outlay**

**Component:** Central Design and Engineering Services (2298)

Line Number	Line Name		FY2021 Actuals	FY2022 Management Plan	FY2023 Governor
5000	Capital Outlay		0.0	5.0	5.0
Object Class	Servicing Agency	Explanation	FY2021 Actuals	FY2022 Management Plan	FY2023 Governor
<b>5000 Capital Outlay Detail Totals</b>			<b>0.0</b>	<b>5.0</b>	<b>5.0</b>
5004	Equipment	Central Region Design and Engineering Services allocated portion of equipment and capital upgrades to the Aviation Building network. Capital Equipment expense for the Central Region Materials and Survey Instrument Lab Cost Allocation Plans.	0.0	5.0	5.0

**Revenue Detail (1681)**  
**Department of Transportation/Public Facilities**

**Component:** Central Design and Engineering Services (2298)

Revenue Type (OMB Fund Code) Revenue Source	Component	Comment	FY2021 Actuals	FY2022 Management Plan	FY2023 Governor
<b>5005 GF/Prgm (1005 GF/Prgm)</b>			<b>3,993.5</b>	<b>597.2</b>	<b>585.2</b>
5111 Program Receipts Transportation - Charges for Services		Receipts from issuing utility permits in the state's right-of-way and for inspection of utility installations. Receipts for the sale and lease of excess right-of-way and permits for encroachments in the state right-of-way. Receipts include charges assessed to the owners of illegally place signs within the State's right-of-way. These signs are removed and stored. When they are identified, they are returned to the owner after the owner has paid the established fee. Includes receipts collected from the Tourist Oriented Destination Signs (TODS) Program, per AS 19.05.070-100 application fee collected to process request for permit for encroachments in the right-of-way of a highway, per CH61, SLA 05 (HB279).	304.9	345.7	345.7
5113 Program Receipts Natural Resources - Rent and Royalties		Right-of-way revenue receipts to be used for Title 23 eligible activities per the Right-of Way Manual section 2.9.7 Revenue Receipt Coding.	3,688.6	251.5	239.5
<b>5007 I/A Rcpts (1007 I/A Rcpts)</b>			<b>16.1</b>	<b>42.1</b>	<b>41.0</b>
5301 Inter-Agency Receipts	Trans - Central Design & Eng Svcs (2298)	Reimbursement from any state agency's operating budget for services provided. Typical requests are for professional construction management. Specific agreements and departments served vary from	0.0	39.1	38.0

**Revenue Detail (1681)**  
**Department of Transportation/Public Facilities**

**Component:** Central Design and Engineering Services (2298)

Revenue Type (OMB Fund Code) Revenue Source	Component	Comment	FY2021 Actuals	FY2022 Management Plan	FY2023 Governor
5301 Inter-Agency Receipts	Trans - Central Highways and Aviation (564)	year to year. Reimbursable services agreement from Central Region Highways and Aviation for professional services in the environmental field.	15.0	3.0	3.0
5301 Inter-Agency Receipts	Trans - Central Highways and Aviation (564)	Reimbursable services agreement from Central Region Highways and Aviation for professional services in Aviation Design.	1.1	0.0	0.0
<b>5061 CIP Rcpts (1061 CIP Rcpts)</b>			<b>23,909.0</b>	<b>24,674.8</b>	<b>24,356.1</b>
5351 Capital Improvement Project Inter-Agency		Capital improvement project receipts for work in direct support of capital projects.	20,488.3	20,413.3	19,990.6
5351 Capital Improvement Project Inter-Agency		Recovery of indirect costs from the capital budget via the department's Indirect Cost Allocation Plan (ICAP).	3,420.7	4,261.5	4,365.5

**Inter-Agency Services (1682)**  
**Department of Transportation/Public Facilities**

**Component:** Central Design and Engineering Services (2298)

				FY2021 Actuals	FY2022 Management Plan	FY2023 Governor
<b>Component Totals</b>				<b>634.8</b>	<b>750.3</b>	<b>730.8</b>
With Department of Administration				508.6	706.3	686.8
With Office of the Governor				0.9	0.0	0.0
With Department of Law				5.4	5.0	5.0
With Department of Education and Early Development				0.0	0.1	0.1
With Department of Transportation/Public Facilities				119.9	38.9	38.9
Object Class	Servicing Agency	Explanation		FY2021 Actuals	FY2022 Management Plan	FY2023 Governor
3017	Inter-Agency Information Technology Non-Telecommunications	Admin - Department-wide	Computer services provided by the Department of Administration, such as central server, data storage, printing, network services, open connect, and task order system.	305.8	422.4	409.4
3018	Inter-Agency Information Technology Telecommunications	Admin - Department-wide	Telecommunication services provided by the Department of Administration such as basic telephone services, equipment and features, dedicated voice/data line service, statewide paging, two-way radio, and video conference.	73.0	60.0	53.5
3021	Inter-Agency Mail	Admin - Department-wide	Chargeback fees for central mail services such as mailing vendor payments and payroll warrants.	0.7	1.0	1.0
3022	Inter-Agency Human Resources	Admin - Department-wide	Chargeback fees for human resource services such as labor relations, position classification and payroll processing.	0.0	113.6	113.6
3022	Inter-Agency Human Resources	Gov - Department-wide	Office of Management and Budget - Budget Analyst support.	0.9	0.0	0.0
3024	Inter-Agency Legal	Law - Department-wide	Legal services provided by the Department of Law.	5.4	5.0	5.0
3026	Inter-Agency Insurance	Admin - Department-wide	Risk Management expense for	18.6	19.0	19.0

**Inter-Agency Services (1682)**  
**Department of Transportation/Public Facilities**

**Component:** Central Design and Engineering Services (2298)

Object Class		Servicing Agency	Explanation	FY2021 Actuals	FY2022 Management Plan	FY2023 Governor
3027	Inter-Agency Financial	Admin - Department-wide	Property/Casualty Insurance for Right of Way Properties. Chargeback fee for HRM/IRIS/ALDER.	66.6	21.1	21.1
3028	Inter-Agency Americans with Disabilities Act Compliance	Admin - Department-wide	Chargeback fees for the statewide coordinator for the Americans with Disabilities Act (ADA).	1.6	1.7	1.7
3029	Inter-Agency Education/Training	Admin - Department-wide	Alaska Statutes.	0.0	0.1	0.1
3029	Inter-Agency Education/Training	E&ED - Department-wide	Procurement Training.	0.0	0.1	0.1
3031	Inter-Agency Construction	Trans - Statewide Aviation (1811)	Survey instrument fee.	0.5	0.4	0.4
3036	Inter-Agency Safety	Trans - International Airport Systems (1649)	Badge fees for Ted Steven's Anchorage International Airport.	0.5	0.5	0.5
3037	State Equipment Fleet	Trans - State Equipment Fleet (2791)	State Equipment Fleet operating and replacement fees, credit card fuel, and vehicle maintenance and repairs. Budgeted amounts, if any, are for operating budget vehicles only; prior year actuals amount includes the cost of capital improvement project (CIP) vehicles, which are funded through an unbudgeted reimbursable services agreement.	81.2	0.0	0.0
3038	Inter-Agency Management/Consulting	Admin - Department-wide	Shared Services of Alaska accounts payable and travel and expense activities.	42.3	67.4	67.4
3038	Inter-Agency Management/Consulting	Trans - Central Design & Eng Svcs (2298)	Construction staff support to the Right-of-Way section to perform field inspections for Right-of-Way permits issued by Central Region and review of traffic control plans not funded by a construction project.	29.9	30.0	30.0
3038	Inter-Agency Management/Consulting	Trans - Central Design & Eng Svcs (2298)	Construction staff support to the Utilities section for review of traffic control plans not funded by a construction project.	7.8	8.0	8.0

**Personal Services Expenditure Detail**  
**Department of Transportation/Public Facilities**

**Scenario:** FY2023 Governor (18673)  
**Component:** Central Design and Engineering Services (2298)  
**RDU:** Design, Engineering and Construction (526)

PCN	Job Class Title	Time Status	Retire Code	Barg Unit	Location	Salary Sched	Range / Step	Comp Months	Split / Count	Annual Salaries	COLA	Premium Pay	Annual Benefits	Total Costs	UGF Amount
25-0175	Administrative Officer 1	FT	A	GP	Anchorage	200	17B / C	12.0		58,199	0	0	42,527	100,726	0
25-0224	Engineer/Architect 3	FT	A	SS	Anchorage	200	25J	12.0		129,147	1,818	0	73,073	204,038	0
25-0236	Engineering Assistant 3	FT	A	GP	Anchorage	200	21L / M	12.0		100,734	0	0	59,881	160,615	0
25-0241	Engineering Assistant 3	FT	A	GP	Anchorage	200	21C / D	12.0		80,472	0	0	51,614	132,086	0
25-0242	Administrative Assistant 3	FT	A	GP	Anchorage	200	15N	12.0		71,273	0	0	47,861	119,134	0
25-0249	Engineer/Architect 1	FT	A	GP	Anchorage	200	22E / F	12.0		90,612	0	0	55,751	146,363	0
25-0378	Engineer/Architect 4	FT	A	SS	Anchorage	200	26F / J	12.0		130,564	1,838	0	73,651	206,053	0
25-0382	Engineer/Architect 5	FT	A	SS	Anchorage	200	27M / N	12.0		153,667	2,069	0	82,650	238,386	97,738
25-0387	Engineer/Architect 4	FT	A	SS	Anchorage	200	26F	12.0		129,584	1,825	0	73,252	204,661	0
25-0389	Engineer/Architect 4	FT	A	SS	Anchorage	200	26Q	12.0		171,496	2,310	0	88,832	262,638	0
25-0401	Administrative Assistant 1	FT	A	GP	Anchorage	200	12O	12.0		59,797	0	0	43,179	102,976	0
25-0402	Engineer/Architect 2	FT	A	SS	Anchorage	200	23J / K	12.0		112,639	1,586	0	66,338	180,563	0
25-0404	Engineer/Architect 3	FT	A	SS	Anchorage	200	25O / P	12.0		153,582	2,068	0	82,621	238,271	0
25-0407	Engineering Assistant 3	FT	A	GP	Anchorage	200	21D / E	12.0		83,811	0	0	52,976	136,787	0
25-0413	Engineer/Architect 1	FT	A	GP	Anchorage	200	22L	12.0		107,309	0	0	62,563	169,872	0
25-0414	Engineer/Architect 4	FT	A	SS	Anchorage	200	26R	12.0		172,786	2,327	0	89,279	264,392	0
25-0416	Engineer/Architect 3	FT	A	SS	Anchorage	200	25D / E	12.0		117,045	1,648	0	68,136	186,829	0
25-0421	Right-Of-Way Agent 3	FT	A	GP	Anchorage	200	18J	12.0		76,811	0	0	50,120	126,931	0
25-0423	Land Survey Manager 1	FT	A	SS	Anchorage	200	23Q	12.0		140,691	1,981	0	77,783	220,455	0
25-0424	Land Surveyor 1	FT	A	GP	Anchorage	200	21M / N	12.0		105,544	0	0	61,843	167,387	0
25-0427	Right-Of-Way Agent 2	FT	A	GP	Anchorage	200	16F / G	12.0		62,881	0	0	44,437	107,318	0
25-0429	Engineer/Architect 2	FT	A	SS	Anchorage	200	23K / L	12.0		119,567	1,684	0	69,165	190,416	0
25-0433	Right-Of-Way Agent 3	FT	A	GP	Anchorage	200	18J / K	12.0		77,726	0	0	50,494	128,220	0
25-0435	Engineer/Architect 4	FT	A	SS	Anchorage	200	26Q / R	12.0		169,755	2,286	0	88,228	260,269	0
25-0452	Office Assistant 2	FT	A	GP	Anchorage	200	10B / C	12.0		37,144	0	0	33,936	71,080	0
25-0468	Office Assistant 1	FT	A	GP	Anchorage	200	8D / E	12.0		35,042	0	0	33,078	68,120	0
25-0473	Right-Of-Way Agent 4	FT	A	SS	Anchorage	200	20F / J	12.0		89,485	1,260	0	56,891	147,636	0
25-0474	Right-Of-Way Agent 4	FT	A	SS	Anchorage	200	20L	12.0		97,968	1,379	0	60,352	159,699	0
25-0475	Engineering Assistant 2	FT	A	GP	Anchorage	200	19C / D	12.0		69,058	0	0	46,957	116,015	0
25-0476	Right-Of-Way Agent 3	FT	A	GP	Anchorage	200	18F / G	12.0		73,109	0	0	48,610	121,719	0
25-0477	Right-Of-Way Agent 3	FT	A	GP	Anchorage	200	18K	12.0		79,307	0	0	51,139	130,446	0
25-0479	Engineering Assistant 3	FT	A	GP	Anchorage	200	21J	12.0		93,971	0	0	57,121	151,092	0
25-0480	Right-Of-Way Agent 3	FT	A	GP	Anchorage	200	18A / B	12.0		61,308	0	0	43,795	105,103	0
25-0482	Right-Of-Way Agent 2	FT	A	GP	Anchorage	200	16J / K	12.0		68,289	0	0	46,643	114,932	0
25-0485	Right-Of-Way Agent 2	FT	A	GP	Anchorage	200	16K / L	12.0		71,360	0	0	47,896	119,256	0
25-0486	Right-Of-Way Agent 3	FT	A	GP	Anchorage	200	18G	12.0		73,769	0	0	48,879	122,648	0
25-0487	Gis Analyst 2	FT	A	GG	Anchorage	200	17A / B	12.0		56,482	0	4,264	43,566	104,312	0
25-0488	Drafting Technician 3	FT	A	GP	Anchorage	200	15G / J	12.0		62,506	0	4,633	46,174	113,313	0

Note: If a position is split, an asterisk (\*) will appear in the Split/Count column. If the split position is also counted in the component, two asterisks (\*\*) will appear in this column.  
[No valid job title] appearing in the Job Class Title indicates that the PCN has an invalid class code or invalid range for the class code effective date of this scenario.

**Personal Services Expenditure Detail**  
**Department of Transportation/Public Facilities**

**Scenario:** FY2023 Governor (18673)  
**Component:** Central Design and Engineering Services (2298)  
**RDU:** Design, Engineering and Construction (526)

PCN	Job Class Title	Time Status	Retire Code	Barg Unit	Location	Salary Sched	Range / Step	Comp Months	Split / Count	Annual Salaries	COLA	Premium Pay	Annual Benefits	Total Costs	UGF Amount
25-0492	Right-Of-Way Assistant	FT	A	GP	Anchorage	200	12D / E	12.0		45,455	0	0	37,327	82,782	0
25-0495	Office Assistant 2	FT	A	GP	Anchorage	200	10C / D	12.0		38,422	0	0	34,457	72,879	0
25-0496	Right-Of-Way Assistant	FT	A	GP	Anchorage	200	12D / E	12.0		45,338	0	0	37,279	82,617	0
25-0497	Administrative Assistant 1	FT	A	GP	Anchorage	200	12C / D	12.0		43,918	0	0	36,700	80,618	0
25-0499	Right-Of-Way Agent 2	FT	A	GP	Anchorage	200	16B / C	12.0		54,972	0	0	41,210	96,182	0
25-0501	Engineering Assistant 2	FT	A	GP	Anchorage	200	19F / G	12.0		78,410	0	0	50,773	129,183	0
25-0504	Tech Eng/Arch 1	FT	A	GP	Anchorage	200	24M / N	12.0		131,355	0	0	72,374	203,729	0
25-0507	Engineering Assistant 3	FT	A	GP	Anchorage	200	21J	12.0		93,971	0	0	57,121	151,092	0
25-0515	Engineering Assistant 3	FT	A	GG	Anchorage	200	21P	12.0		114,964	0	0	65,687	180,651	0
25-0531	Engineering Assistant 1	FT	A	GP	Anchorage	200	17B / C	12.0		58,199	0	0	42,527	100,726	0
25-0541	Engineering Assistant 3	FT	A	GP	Anchorage	200	21M	12.0		103,448	0	0	60,988	164,436	0
25-0561	Right-Of-Way Agent 1	FT	A	GP	Anchorage	200	14E / F	12.0		52,543	0	0	40,219	92,762	0
25-0590	Mlt Jrny	PT	A	LL	Anchorage	2AA	53Q	9.0		55,049	0	11,292	41,075	107,416	0
25-0598	Engineering Assistant 3	FT	A	GP	Anchorage	200	21E / F	12.0		85,261	0	0	53,568	138,829	0
25-0599	Engineer/Architect 1	FT	A	GP	Anchorage	200	22A / B	12.0		80,233	0	0	51,516	131,749	0
25-0605	Mtlb Subjrny 2	PT	A	LL	Anchorage	2AA	57A	9.5		30,951	0	5,640	29,715	66,306	0
25-0612	Survey, Sub-Journey 2	PT	A	LL	Anchorage	2AA	56F / J	11.0		45,980	0	7,056	38,760	91,796	0
25-0616	Engineer/Architect 3	FT	A	SS	Anchorage	200	25F	12.0		125,091	1,761	0	71,418	198,270	0
25-0617	Engineer/Architect 2	FT	A	GP	Anchorage	200	23K / L	12.0		111,784	0	0	64,389	176,173	0
25-0619	Engineer/Architect 1	FT	A	GP	Anchorage	200	22D / E	12.0		87,662	0	0	54,547	142,209	0
25-0620	Engineer/Architect 1	FT	A	GP	Anchorage	200	22C / D	12.0		86,791	0	0	54,192	140,983	0
25-0621	Env Imp A Mgr 1	FT	A	SS	Anchorage	200	21O	12.0		116,250	1,637	0	67,811	185,698	0
25-0623	Engineer/Architect 3	FT	A	SS	Anchorage	200	25M	12.0		142,147	2,001	0	78,377	222,525	0
25-0626	Engineering Assistant 3	FT	A	GP	Anchorage	200	21C / D	12.0		80,257	0	0	51,526	131,783	0
25-0627	Tech Eng/Arch 1	FT	A	SS	Anchorage	200	24R	12.0		171,725	2,313	0	88,911	262,949	0
25-0628	Engineering Assistant 3	FT	A	GP	Anchorage	200	21P	12.0		114,964	0	0	65,687	180,651	0
25-0629	Engineering Assistant 3	FT	A	GP	Anchorage	200	21E / F	12.0		86,791	0	0	54,192	140,983	0
25-0631	Engineer/Architect 1	FT	A	GP	Anchorage	200	22O	12.0		118,668	0	0	67,198	185,866	0
25-0632	Land Surveyor 2	FT	A	SS	Anchorage	200	22M	12.0		115,523	1,627	0	67,515	184,665	0
25-0634	Engineering Assistant 3	FT	A	GP	Anchorage	200	21G	12.0		90,188	0	0	55,578	145,766	0
25-0635	Engineering Assistant 3	FT	A	GP	Anchorage	200	21C / D	12.0		80,472	0	0	51,614	132,086	0
25-0636	Engineer/Architect 2	FT	A	SS	Anchorage	200	23J	12.0		112,486	1,584	0	66,276	180,346	0
25-0638	Engineering Assistant 3	FT	A	GP	Anchorage	200	21J	12.0		93,971	0	0	57,121	151,092	0
25-0640	Engineering Assistant 3	FT	A	GP	Anchorage	200	21F / G	12.0		87,903	0	0	54,646	142,549	0
25-0643	Engineering Assistant 3	FT	A	GP	Anchorage	200	21A / B	12.0		75,114	0	0	49,428	124,542	0
25-0644	Engineering Assistant 2	FT	A	GP	Anchorage	200	19L	12.0		87,497	0	0	54,480	141,977	0
25-0646	Engineering Assistant 2	FT	A	GP	Anchorage	200	19M / N	12.0		93,165	0	0	56,793	149,958	0
25-0648	Engineering Assistant 3	FT	A	GP	Anchorage	200	21B / C	12.0		77,084	0	0	50,232	127,316	0

Note: If a position is split, an asterisk (\*) will appear in the Split/Count column. If the split position is also counted in the component, two asterisks (\*\*) will appear in this column. [No valid job title] appearing in the Job Class Title indicates that the PCN has an invalid class code or invalid range for the class code effective date of this scenario.

**Personal Services Expenditure Detail**  
**Department of Transportation/Public Facilities**

**Scenario:** FY2023 Governor (18673)  
**Component:** Central Design and Engineering Services (2298)  
**RDU:** Design, Engineering and Construction (526)

PCN	Job Class Title	Time Status	Retire Code	Barg Unit	Location	Salary Sched	Range / Step	Comp Months	Split / Count	Annual Salaries	COLA	Premium Pay	Annual Benefits	Total Costs	UGF Amount
25-0649	Engineering Assistant 3	FT	A	GP	Anchorage	200	21N / O	12.0		109,924	0	0	63,630	173,554	0
25-0651	Engineer/Architect 1	FT	A	GP	Anchorage	200	22C / D	12.0		86,893	0	0	54,234	141,127	0
25-0652	Engineering Assistant 3	FT	A	GP	Anchorage	200	21G / J	12.0		91,575	0	0	56,144	147,719	0
25-0655	Engineering Assistant 2	FT	A	GP	Anchorage	200	19B / C	12.0		68,621	0	0	46,779	115,400	0
25-0656	Engineer/Architect 1	FT	A	GP	Anchorage	200	22E / F	12.0		92,167	0	0	56,385	148,552	0
25-0657	Engineer/Architect 1	FT	A	GP	Anchorage	200	22J / K	12.0		100,796	0	0	59,906	160,702	0
25-0659	Engineering Assistant 2	FT	A	GP	Anchorage	200	19C / D	12.0		70,655	0	0	47,609	118,264	0
25-0661	Engineering Assistant 3	FT	A	GP	Anchorage	200	21J	12.0		93,971	0	0	57,121	151,092	0
25-0662	Engineering Assistant 1	FT	A	GP	Anchorage	200	17C / D	12.0		61,022	0	0	43,678	104,700	0
25-0663	Environmental Impact Analyst 3	FT	A	GP	Anchorage	200	19E / F	12.0		75,450	0	0	49,565	125,015	0
25-0665	Engineering Assistant 3	FT	A	GP	Anchorage	200	21A / B	12.0		76,168	0	0	49,858	126,026	0
25-0667	Gis Analyst 2	FT	A	GP	Anchorage	200	17K / L	12.0		74,441	0	5,703	51,480	131,624	0
25-0670	Engineer/Architect 3	FT	A	SS	Anchorage	200	25L / M	12.0		141,402	1,991	0	78,073	221,466	0
25-0671	Engineer/Architect 1	FT	A	GP	Anchorage	200	22C / D	12.0		85,516	0	0	53,672	139,188	0
25-0672	Engineer/Architect 2	FT	A	SS	Anchorage	200	23N	12.0		128,319	0	0	72,735	201,054	0
25-0675	Engineer/Architect 1	FT	A	GP	Anchorage	200	22F / G	12.0		94,703	0	0	57,420	152,123	0
25-0676	Engineer/Architect 1	FT	A	GP	Anchorage	200	22B / C	12.0		82,374	0	0	52,390	134,764	0
25-0683	Engineering Assistant 3	FT	A	GP	Anchorage	200	21C / D	12.0		80,591	0	0	51,662	132,253	0
25-0685	Engineering Assistant 3	FT	A	GP	Anchorage	200	21A / B	12.0		75,114	0	0	49,428	124,542	0
25-0687	Engineer/Architect 1	FT	A	GP	Anchorage	200	22A / B	12.0		80,233	0	0	51,516	131,749	0
25-0689	Engineering Assistant 2	FT	A	GP	Anchorage	200	19F / G	12.0		77,532	0	0	50,414	127,946	0
25-0695	Right-Of-Way Agent 2	FT	A	GP	Anchorage	200	16B / C	12.0		54,423	0	0	40,986	95,409	0
25-0702	Drafting Technician 3	FT	A	GP	Anchorage	200	15G / J	12.0		62,299	0	4,633	46,090	113,022	0
25-0705	Drafting Technician 3	FT	A	GP	Anchorage	200	15K / L	12.0		66,866	0	5,143	48,161	120,170	0
25-0706	Drafting Technician 3	FT	A	GP	Anchorage	200	15A / B	12.0		49,579	0	3,744	40,537	93,860	0
25-0712	Right-Of-Way Agent 2	FT	A	GP	Anchorage	200	16F / G	12.0		64,526	0	0	45,108	109,634	0
25-0715	Right-Of-Way Agent 2	FT	A	GP	Anchorage	200	16D / E	12.0		58,287	0	0	42,562	100,849	0
25-0717	Engineering Assistant 3	FT	A	GP	Anchorage	200	21J	12.0		93,971	0	0	57,121	151,092	0
25-0719	Right-Of-Way Agent 1	FT	A	GP	Anchorage	200	14D / E	12.0		52,148	0	0	40,058	92,206	0
25-0721	Mtlb Subjry 4	PT	A	LL	Anchorage	2AA	54J	9.0		42,595	0	8,193	34,729	85,517	0
25-0724	Engineering Geologist 1	FT	A	GP	Anchorage	200	16B / C	12.0		55,869	0	4,173	43,278	103,320	0
25-0725	Regional Engineering Geologist	FT	A	SS	Anchorage	200	22P	12.0		129,672	1,826	0	73,287	204,785	0
25-0726	Survey, Journey	PT	A	LL	Anchorage	2AA	54F / J	11.0		50,757	0	7,896	41,051	99,704	0
25-0733	Engineering Assistant 1	FT	A	GP	Anchorage	200	17B / C	12.0		60,005	0	4,470	45,087	109,562	0
25-0736	Mtlb Foreman	PT	A	LL	Anchorage	2AA	51N	9.0		59,534	0	11,451	42,970	113,955	0
25-0738	Engineering Assistant 2	FT	A	GP	Anchorage	200	19J / K	12.0		84,524	0	0	53,267	137,791	0
25-0741	Mtlb Subjry 2	FT	A	LL	Anchorage	2AA	57D / E	12.0		43,529	0	6,252	38,988	88,769	0

Note: If a position is split, an asterisk (\*) will appear in the Split/Count column. If the split position is also counted in the component, two asterisks (\*\*) will appear in this column. [No valid job title] appearing in the Job Class Title indicates that the PCN has an invalid class code or invalid range for the class code effective date of this scenario.



**Personal Services Expenditure Detail**  
**Department of Transportation/Public Facilities**

**Scenario:** FY2023 Governor (18673)  
**Component:** Central Design and Engineering Services (2298)  
**RDU:** Design, Engineering and Construction (526)

PCN	Job Class Title	Time Status	Retire Code	Barg Unit	Location	Salary Sched	Range / Step	Comp Months	Split / Count	Annual Salaries	COLA	Premium Pay	Annual Benefits	Total Costs	UGF Amount
25-0743	Gis Analyst 2	PT	A	GP	Anchorage	200	17A	9.0		41,988	0	8,613	34,731	85,332	0
25-0747	Engineering Assistant 2	FT	A	GP	Anchorage	200	19C / D	12.0		70,229	0	5,304	49,599	125,132	0
25-0751	Environmental Impact Analyst 3	FT	A	GP	Anchorage	200	19L / M	12.0		89,988	0	0	55,496	145,484	0
25-0752	Environmental Impact Analyst 2	FT	A	GP	Anchorage	200	17B / C	12.0		59,509	0	0	43,061	102,570	0
25-0753	Environmental Impact Analyst 3	FT	A	GP	Anchorage	200	19G / J	12.0		80,301	0	0	51,544	131,845	0
25-0755	Environmental Impact Analyst 3	FT	A	GP	Anchorage	200	19G / J	12.0		80,165	0	0	51,489	131,654	0
25-0756	Environmental Impact Analyst 3	FT	A	GP	Anchorage	200	19A / B	12.0		65,637	0	0	45,561	111,198	0
25-0762	Environmental Impact Analyst 3	FT	A	GP	Anchorage	200	19B / C	12.0		68,291	0	0	46,644	114,935	0
25-0766	Engineering Geologist 1	FT	A	GP	Anchorage	200	16B / C	12.0		55,392	0	8,346	44,786	108,524	0
25-0770	Engineering Assistant 1	FT	A	GP	Anchorage	200	17D / E	12.0		63,971	0	0	44,881	108,852	0
25-0771	Engineer/Architect 4	FT	A	SS	Anchorage	200	26J / K	12.0		134,148	1,889	0	75,114	211,151	0
25-0791	Survey, Journey	PT	A	LL	Anchorage	2AA	54C / D	11.0		46,334	0	7,122	38,931	92,387	0
25-0792	Survey Lead	PT	A	LL	Anchorage	2AA	53N / O	11.0		65,572	0	10,113	48,000	123,685	0
25-0797	Engineer/Architect 3	FT	A	SS	Anchorage	200	25K / L	12.0		134,611	1,895	0	75,303	211,809	0
25-0800	Engineer/Architect 1	FT	A	GP	Anchorage	200	22G	12.0		96,642	0	0	58,211	154,853	0
25-0802	Engineering Assistant 2	FT	A	GP	Anchorage	200	19B / C	12.0		68,879	0	0	46,884	115,763	0
25-0805	Engineering Assistant 2	FT	A	GP	Anchorage	200	19B / C	12.0		68,879	0	5,134	48,979	122,992	0
25-0808	Engineering Assistant 2	FT	A	GP	Anchorage	200	19C / D	12.0		71,294	0	5,304	50,033	126,631	0
25-0810	Engineering Assistant 3	FT	A	GP	Anchorage	200	21C / D	12.0		80,830	0	6,061	54,233	141,124	0
25-0819	Engineering Assistant 2	FT	A	GP	Anchorage	200	19D / E	12.0		72,826	0	5,500	50,738	129,064	0
25-0820	Engineer/Architect 1	FT	A	GP	Anchorage	200	22G / J	12.0		99,287	0	0	59,290	158,577	0
25-0821	Engineering Assistant 3	FT	A	GP	Anchorage	200	21B / C	12.0		77,006	0	5,881	52,599	135,486	0
25-0886	Engineer/Architect 1	FT	A	GP	Anchorage	200	22D / E	12.0		89,346	0	0	55,234	144,580	0
25-0887	Survey Lead	PT	A	LL	Anchorage	2AA	53K	11.0		57,551	0	9,057	44,297	110,905	0
25-0889	Survey Lead	PT	A	LL	Anchorage	2AA	53N	11.0		64,261	0	10,113	47,465	121,839	0
25-0893	Mtlb Subjrm 2	PT	A	LL	Anchorage	2AA	57F	9.0		34,813	0	6,696	30,944	72,453	0
25-0925	Engineering Assistant 1	FT	A	GP	Anchorage	200	17C / D	12.0		61,934	0	4,633	45,941	112,508	0
25-0927	Tech Eng/Arch 1	FT	A	GP	Anchorage	200	24K / L	12.0		119,658	0	0	67,602	187,260	0
25-0929	Land Surveyor 1	FT	A	GP	Anchorage	200	21G	12.0		90,188	0	0	55,578	145,766	0
25-0933	Office Assistant 2	FT	A	GP	Anchorage	200	10E / F	12.0		40,821	0	0	35,436	76,257	0
25-0954	Survey, Journey	PT	A	LL	Anchorage	2AA	54M	11.0		58,123	0	9,147	44,567	111,837	0
25-0958	Environmental Impact Analyst 3	FT	A	GP	Anchorage	200	19J	12.0		82,076	0	0	52,268	134,344	0

Note: If a position is split, an asterisk (\*) will appear in the Split/Count column. If the split position is also counted in the component, two asterisks (\*\*) will appear in this column. [No valid job title] appearing in the Job Class Title indicates that the PCN has an invalid class code or invalid range for the class code effective date of this scenario.

**Personal Services Expenditure Detail**  
**Department of Transportation/Public Facilities**

**Scenario:** FY2023 Governor (18673)  
**Component:** Central Design and Engineering Services (2298)  
**RDU:** Design, Engineering and Construction (526)

PCN	Job Class Title	Time Status	Retire Code	Barg Unit	Location	Salary Sched	Range / Step	Comp Months	Split / Count	Annual Salaries	COLA	Premium Pay	Annual Benefits	Total Costs	UGF Amount
25-0960	Engineer/Architect 3	FT	A	SS	Anchorage	200	25L / M	12.0		139,315	1,962	0	77,222	218,499	0
25-0962	Engineer/Architect 1	FT	A	GP	Anchorage	200	22E / F	12.0		93,156	0	0	56,789	149,945	0
25-0963	Tech Eng/Arch 1	FT	A	GP	Anchorage	200	24T / U	12.0		167,512	0	0	85,850	253,362	0
25-0964	Engineer/Architect 3	FT	A	SS	Anchorage	200	25Q	12.0		164,699	2,218	0	86,475	253,392	0
25-0967	Engineer/Architect 3	FT	A	SS	Anchorage	200	25F	12.0		125,091	1,761	0	71,418	198,270	0
25-1431	Engineering Assistant 3	FT	A	GP	Anchorage	200	21G / J	12.0		93,655	0	6,937	59,823	160,415	0
25-1504	Mlt Jrny	PT	A	LL	Anchorage	2AA	53O	6.0		36,362	0	6,294	26,742	69,398	0
25-1517	Mlt Jrny	FT	A	LL	Anchorage	2AA	53J	12.0		60,516	0	5,019	45,416	110,951	0
25-1626	Environmental Impact Analyst 3	FT	A	GP	Anchorage	200	19B / C	12.0		68,291	0	0	46,644	114,935	0
25-1649	Mtlb Subjrny 1	PT	A	LL	Anchorage	2AA	59C	6.0		18,654	0	3,229	18,267	40,150	0
25-1835	Engineering Assistant 2	FT	A	GP	Anchorage	200	19A / B	12.0		65,637	0	4,963	47,586	118,186	0
25-2301	Right-Of-Way Agent 4	FT	A	SS	Anchorage	200	20F	12.0		89,003	1,253	0	56,694	146,950	0
25-3408	Engineering Assistant 2	FT	A	GP	Anchorage	200	19F / G	12.0		78,507	0	5,881	53,212	137,600	0
25-3438	Engineering Assistant 2	FT	A	GP	Anchorage	200	19D / E	12.0		71,601	0	5,500	50,239	127,340	0
25-3439	Engineering Assistant 3	FT	A	GP	Anchorage	200	21E / F	12.0		85,643	0	6,480	56,368	148,491	0
25-3440	Engineering Assistant 3	FT	A	GP	Anchorage	200	21J	12.0		93,971	0	7,228	60,071	161,270	0
25-3441	Engineer/Architect 1	FT	A	GP	Anchorage	200	22J / K	12.0		102,980	0	0	60,797	163,777	0
25-3442	Engineer/Architect 1	FT	A	GP	Anchorage	200	22E / F	12.0		90,753	0	0	55,809	146,562	0
25-3443	Engineering Assistant 3	FT	A	GP	Anchorage	200	21O	12.0		110,796	0	8,529	67,466	186,791	0
25-3444	Engineering Assistant 2	FT	A	GP	Anchorage	200	19D / E	12.0		72,826	0	5,500	50,738	129,064	0
25-3445	Engineering Assistant 2	FT	A	GP	Anchorage	200	19A / B	12.0		65,637	0	4,963	47,586	118,186	0
25-3446	Engineering Assistant 2	FT	A	GP	Anchorage	200	19G / J	12.0		81,120	0	6,061	54,351	141,532	0
25-3447	Right-Of-Way Agent 3	FT	A	GP	Anchorage	200	18A / B	12.0		61,898	0	0	44,036	105,934	0
25-3448	Land Surveyor 1	FT	A	GP	Anchorage	200	21M / N	12.0		104,426	0	0	61,387	165,813	0
25-3459	Engineering Assistant 2	FT	A	GP	Anchorage	200	19B / C	12.0		68,199	0	5,134	48,701	122,034	0
25-3498	Environmental Impact Analyst 1	FT	A	GP	Anchorage	200	15B / C	12.0		50,848	0	3,883	41,112	95,843	0
25-3553	Engineer/Architect 2	FT	A	SS	Anchorage	200	23K	12.0		116,147	1,635	0	67,769	185,551	0
25-3559	Engineer/Architect 1	FT	A	GP	Anchorage	200	22F / G	12.0		96,642	0	0	58,211	154,853	0
25-3560	Engineer/Architect 2	FT	A	GP	Anchorage	200	23K	12.0		111,482	0	0	64,266	175,748	0
25-3587	Environmental Impact Analyst 1	FT	A	GP	Anchorage	200	15A / B	12.0		49,579	0	0	39,010	88,589	0
25-3588	Environmental Impact Analyst 1	FT	A	GP	Anchorage	200	15B / C	12.0		50,803	0	0	39,509	90,312	0
25-3683	Right-Of-Way Agent 2	FT	A	GP	Anchorage	200	16G / J	12.0		66,307	0	0	45,835	112,142	0
25-3684	Right-Of-Way Agent 2	FT	A	GP	Anchorage	200	16G / J	12.0		64,637	0	0	45,153	109,790	0
25-3736	Engineering Assistant 3	FT	A	GP	Anchorage	200	21B / C	12.0		78,683	0	0	50,884	129,567	0
25-3868	Engineer/Architect 4	FT	A	SS	Matanuska	200	26A / B	12.0		110,770	1,560	0	65,575	177,905	0

Note: If a position is split, an asterisk (\*) will appear in the Split/Count column. If the split position is also counted in the component, two asterisks (\*\*) will appear in this column. [No valid job title] appearing in the Job Class Title indicates that the PCN has an invalid class code or invalid range for the class code effective date of this scenario.

**Personal Services Expenditure Detail**  
**Department of Transportation/Public Facilities**

**Scenario:** FY2023 Governor (18673)  
**Component:** Central Design and Engineering Services (2298)  
**RDU:** Design, Engineering and Construction (526)

PCN	Job Class Title	Time Status	Retire Code	Barg Unit	Location	Salary Sched	Range / Step	Comp Months	Split / Count	Annual Salaries	COLA	Premium Pay	Annual Benefits	Total Costs	UGF Amount
					Susitna areawide										
25-IN1215	College Intern 2	NP	N	EE	Anchorage	N00	9A	9.0		25,140	0	0	3,308	28,448	0
25-IN1436	College Intern 2	NP	N	EE	Anchorage	N00	9A	6.0		16,760	0	0	2,206	18,966	0
25-IN1437	College Intern 4	NP	N	EE	Anchorage	N00	12A	9.5		31,755	0	0	4,179	35,934	0
25-IN1438	College Intern 4	NP	N	EE	Anchorage	N00	12A	9.5		31,755	0	0	4,179	35,934	0
25-IN1441	College Intern 4	NP	N	EE	Anchorage	N00	12A	6.0		20,056	0	0	2,639	22,695	0
25-IN1503	College Intern 4	NP	N	EE	Anchorage	N00	12A	9.0		30,084	0	0	3,959	34,043	0
25-T011	Electrical Engineer	NP	A	XE	Anchorage	N00	25Q / R	12.0		149,778	0	0	44,028	193,806	0
	<b>Total Positions</b>		<b>New</b>	<b>Deleted</b>									<b>Total Salary Costs:</b>	15,536,567	
	<b>Full Time Positions:</b>	165	0	0									<b>Total COLA:</b>	54,992	
	<b>Part Time Positions:</b>	15	0	0									<b>Total Premium Pay:</b>	287,168	
	<b>Non Permanent Positions:</b>	7	0	0									<b>Total Benefits:</b>	9,758,445	
	<b>Positions in Component:</b>	187	0	0									<b>Total Pre-Vacancy:</b>	25,637,172	
													<b>Minus Vacancy Adjustment of 6.73%:</b>	(1,724,572)	
													<b>Total Post-Vacancy:</b>	23,912,600	
	<b>Total Component Months:</b>	2,184.5											<b>Plus Lump Sum Premium Pay:</b>	0	
													<b>Personal Services Line 100:</b>	23,912,600	

PCN Funding Sources:	Pre-Vacancy	Post-Vacancy	Percent
1004 General Fund Receipts	97,738	91,164	0.38%
1005 General Fund/Program Receipts	483,942	451,388	1.89%
1007 Interagency Receipts	42,470	39,613	0.17%
1039 U/A Indirect Cost Recovery	3,569,734	3,329,603	13.92%
1061 Capital Improvement Project Receipts	21,443,289	20,000,833	83.64%
<b>Total PCN Funding:</b>	<b>25,637,172</b>	<b>23,912,600</b>	<b>100.00%</b>

Note: If a position is split, an asterisk (\*) will appear in the Split/Count column. If the split position is also counted in the component, two asterisks (\*\*) will appear in this column. [No valid job title] appearing in the Job Class Title indicates that the PCN has an invalid class code or invalid range for the class code effective date of this scenario.

DEPARTMENT OF TRANSPORTATION AND PUBLIC FACILITIES  
 RDU: DESIGN AND CONSTRUCTION  
 COMPONENT: CENTRAL DESIGN AND ENGINEERING SERVICES (2298)  
 FY2023 GOVERNORS BUDGET

**REGIONAL PRECONSTRUCTION ENGINEER**  
 Engineer/Architect 5  
 25-0382  
 R27 PFT SS

COMPONENT TOTAL:  
 FULL-TIME POSITIONS: 165  
 SEASONAL FT POSITIONS: 15  
 NON-PERM POSITIONS: 7  
 GRAND TOTAL: 187

REGIONAL OFFICE TOTAL:  
 FULL-TIME POSITIONS: 4  
 PART-TIME POSITIONS: 0  
 NON-PERM POSITIONS: 1  
 TOTAL: 5

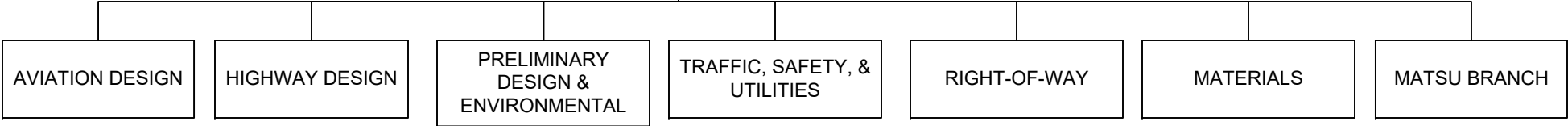
Electrical Engineer  
 Technical Engineer/Architect 2  
 25T011  
 R25 NPFT PX

Administrative Officer 1  
 25-0175  
 R17 PFT GP

Administrative Assistant 1  
 25-0497  
 R12 PFT GP

COMPONENT  
 INTERNS

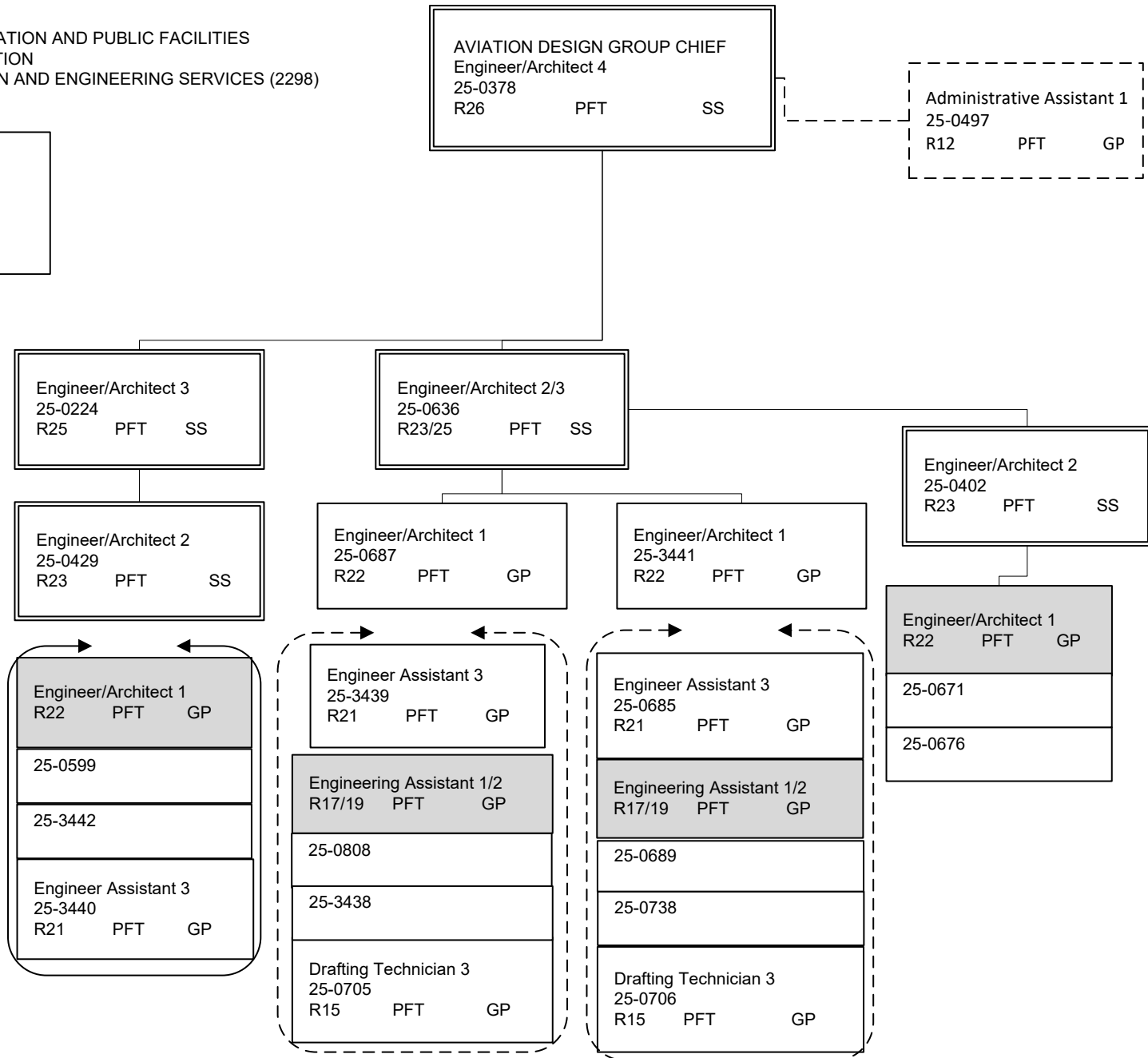
Office Assistant 1  
 25-0468  
 R8 PFT GP



Note: All positions are located in Anchorage.

DEPARTMENT OF TRANSPORTATION AND PUBLIC FACILITIES  
 RDU: DESIGN AND CONSTRUCTION  
 COMPONENT: CENTRAL DESIGN AND ENGINEERING SERVICES (2298)  
 FY2023 GOVERNORS BUDGET

AVIATION DESIGN TOTAL:  
 FULL-TIME POSITIONS: 20  
 PART-TIME POSITIONS: 0  
 TOTAL 20



Note: All positions are located in Anchorage.

DEPARTMENT OF TRANSPORTATION AND PUBLIC FACILITIES  
 RDU: DESIGN AND CONSTRUCTION  
 COMPONENT: CENTRAL DESIGN AND ENGINEERING SERVICES (2298)  
 FY2023 GOVERNORS BUDGET

HIGHWAY DESIGN TOTAL:	
FULL-TIME POSITIONS:	31
PART-TIME POSITIONS:	0
NON-PERM POSITIONS:	0
TOTAL	31

HIGHWAY DESIGN GROUP CHIEF		
Engineer/Architect 4		
25-0389		
R26	PFT	SS

Administrative Assistant 1		
25-0497		
R12	PFT	GP

Engineer/Architect 2/3		
25-0404		
R23/25	PFT	SS

Engineer/Architect 3		
25-0616		
R25	PFT	SS

Engineer/Architect 3		
25-0797		
R25	PFT	SS

Engineer/Architect 3		
25-0967		
R25	PFT	SS

Engineer/Architect 2/3		
25-0960		
R23/25	PFT	SS

Engineer/Architect 2/3		
25-0416		
R23/25	PFT	SS

Engineer/Architect 1		
25-0962		
R22	PFT	GP

Engineer/Architect 2		
25-3560		
R23	PFT	GP

Engineer/Architect 2		
25-0617		
R23	PFT	GP

Engineer/Architect 1		
25-0631		
R22	PFT	GP

Consultant Coordinator		
Engineer/Architect 1		
25-0619		
R22	PFT	GP

Engineering Assistant 1/2		
25-1835		
R17/19	PFT	GP

Engineering Assistant 3		
25-0541		
R21	PFT	GP

Engineer/Architect 1		
25-0886		
R22	PFT	GP

Engineer/Architect 1		
25-0675		
R22	PFT	GP

Engineering Asst 3/ Eng Associate / Eng./Arch. 1		
25-0820		
R21/22	PFT	GP

25-0620		
---------	--	--

25-0683		
---------	--	--

Engineering Assistant 3		
25-0598		
R21	PFT	GP

Engineering Assistant 3		
25-0515		
R21	PFT	GP

25-0640		
---------	--	--

25-0620		
---------	--	--

Engineering Assistant 1/2		
25-0655		
R17/19	PFT	GP

25-0665		
---------	--	--

25-0640		
---------	--	--

25-0662		
---------	--	--

Engineering Assistant 2		
25-0819		
R19	PFT	GP

Engineering Assistant 1/2		
25-0646		
R17/19	PFT	GP

GIS Analyst 1/2/3		
25-0487		
R15/17/19	PFT	GP

Engineering Assistant 1/2		
25-0644		
R17/19	PFT	GP

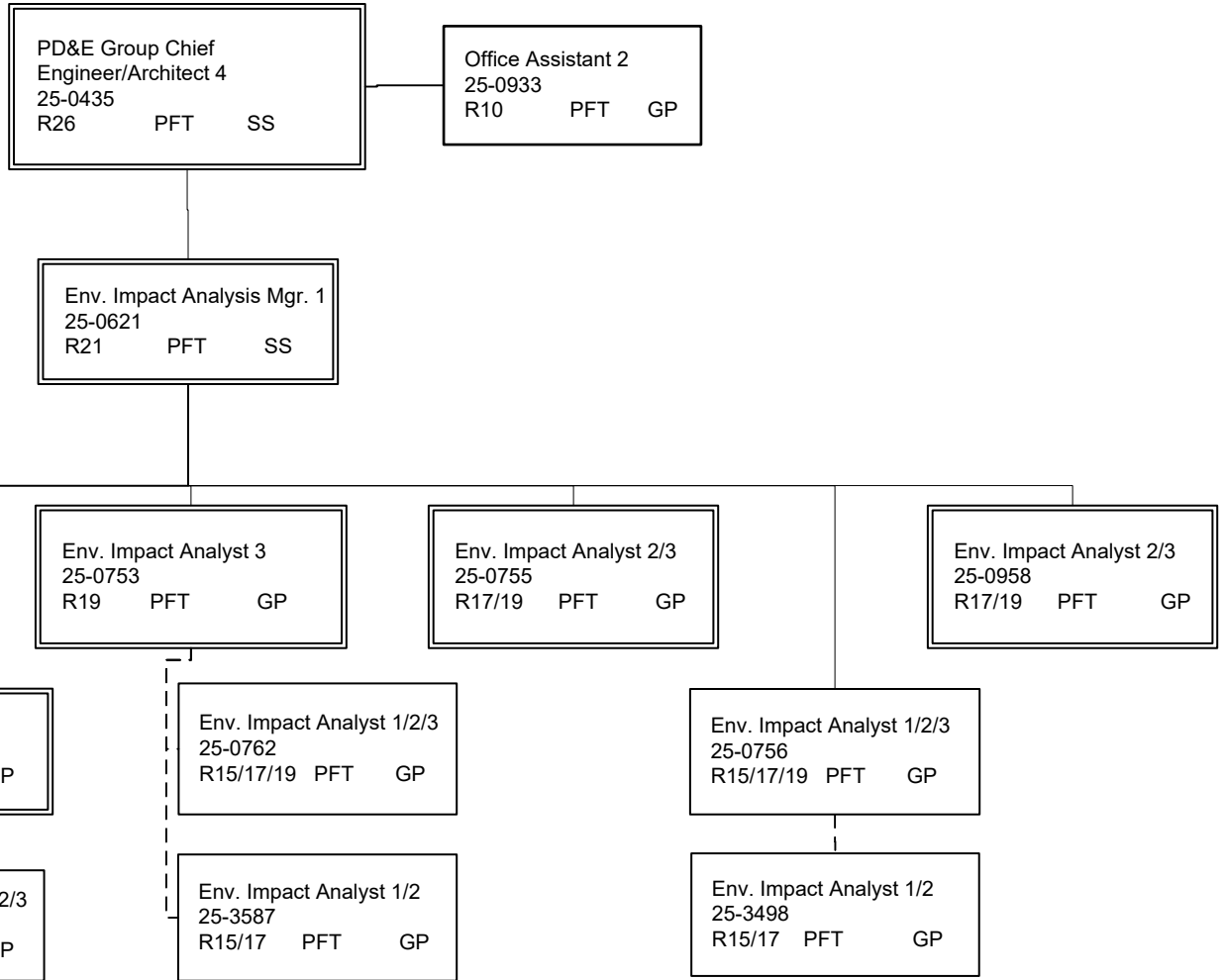
25-0802		
---------	--	--

GIS Analyst 1/2/3		
25-0667		
R15/17/19	PFT	GP

Note: All positions are located in Anchorage.

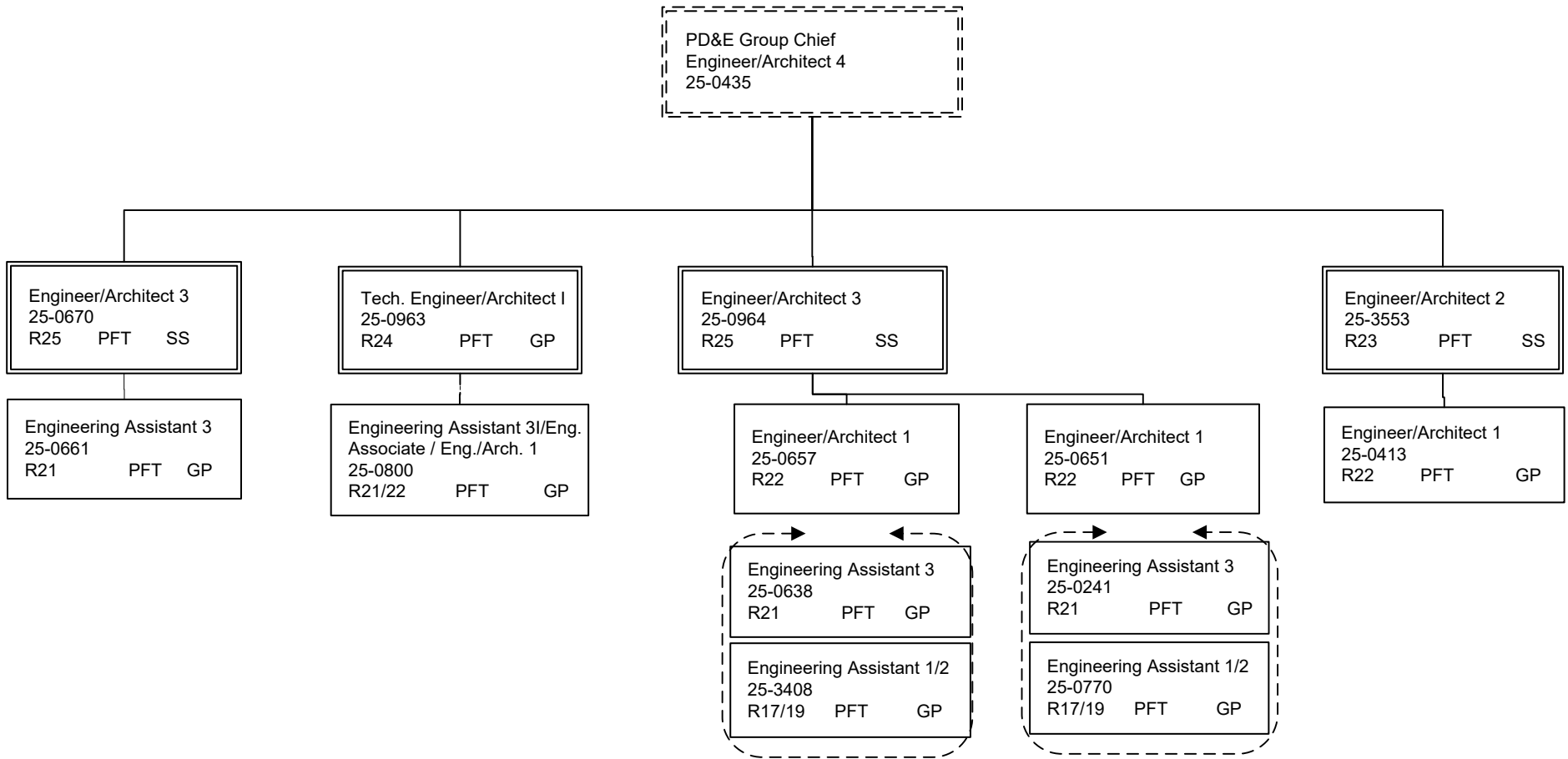
DEPARTMENT OF TRANSPORTATION AND PUBLIC FACILITIES  
 RDU: DESIGN AND CONSTRUCTION  
 COMPONENT: CENTRAL DESIGN AND ENGINEERING SERVICES (2298)  
 FY2023 GOVERNORS BUDGET

PRELIMINARY DESIGN TOTAL:	
FULL-TIME POSITIONS:	28
PART-TIME POSITIONS:	0
TOTAL	28



Note: All positions are located in Anchorage.

DEPARTMENT OF TRANSPORTATION AND PUBLIC FACILITIES  
 RDU: DESIGN AND CONSTRUCTION  
 COMPONENT: CENTRAL DESIGN AND ENGINEERING SERVICES (2298)  
 FY2023 GOVERNORS BUDGET

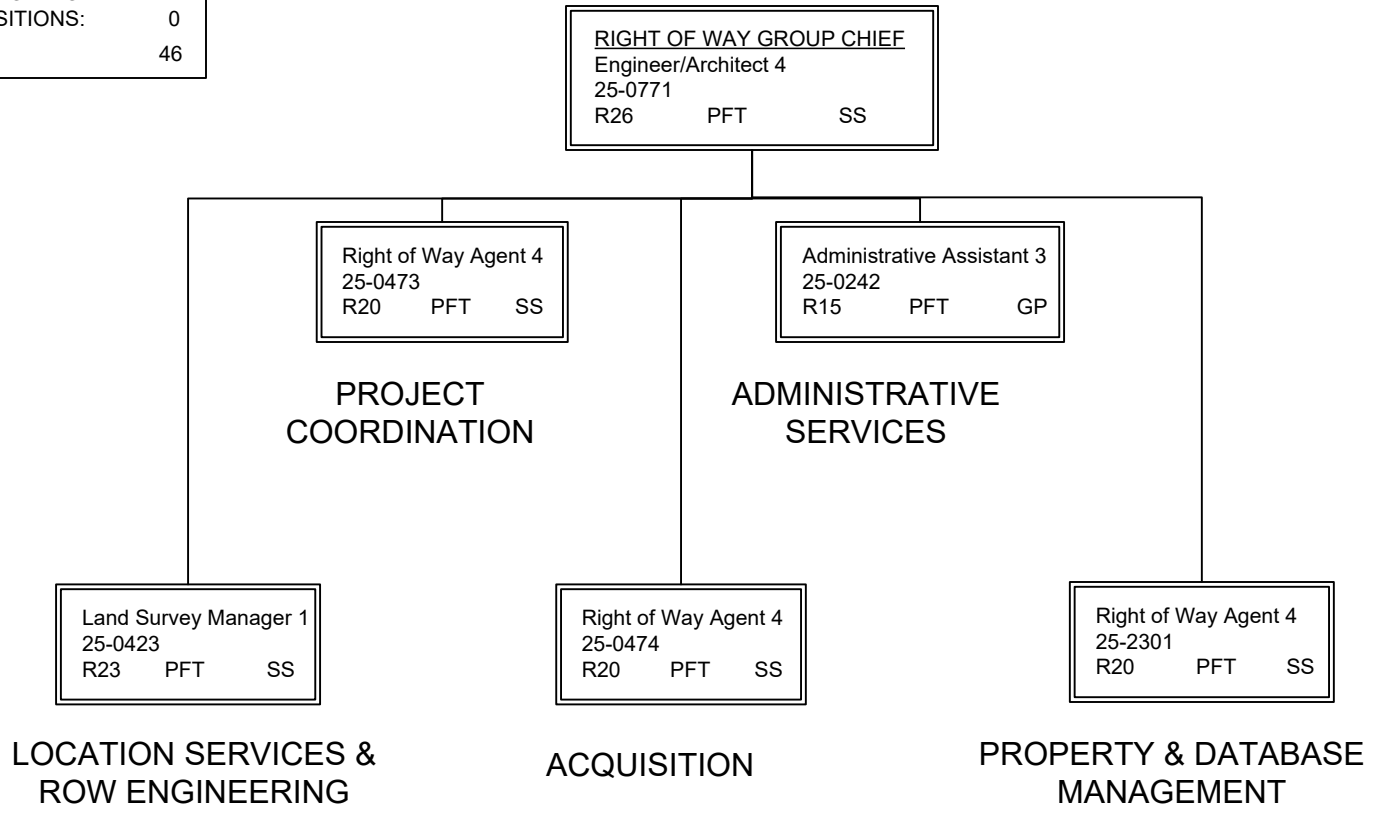


Note: All positions are located in Anchorage.



DEPARTMENT OF TRANSPORTATION AND PUBLIC FACILITIES  
 RDU: DESIGN AND CONSTRUCTION  
 COMPONENT: CENTRAL DESIGN AND ENGINEERING SERVICES (2298)  
 FY2023 GOVERNORS BUDGET

RIGHT OF WAY TOTAL:	
FULL-TIME POSITIONS:	39
SEASONAL FT POSITIONS:	7
NON-PERM POSITIONS:	0
TOTAL	46

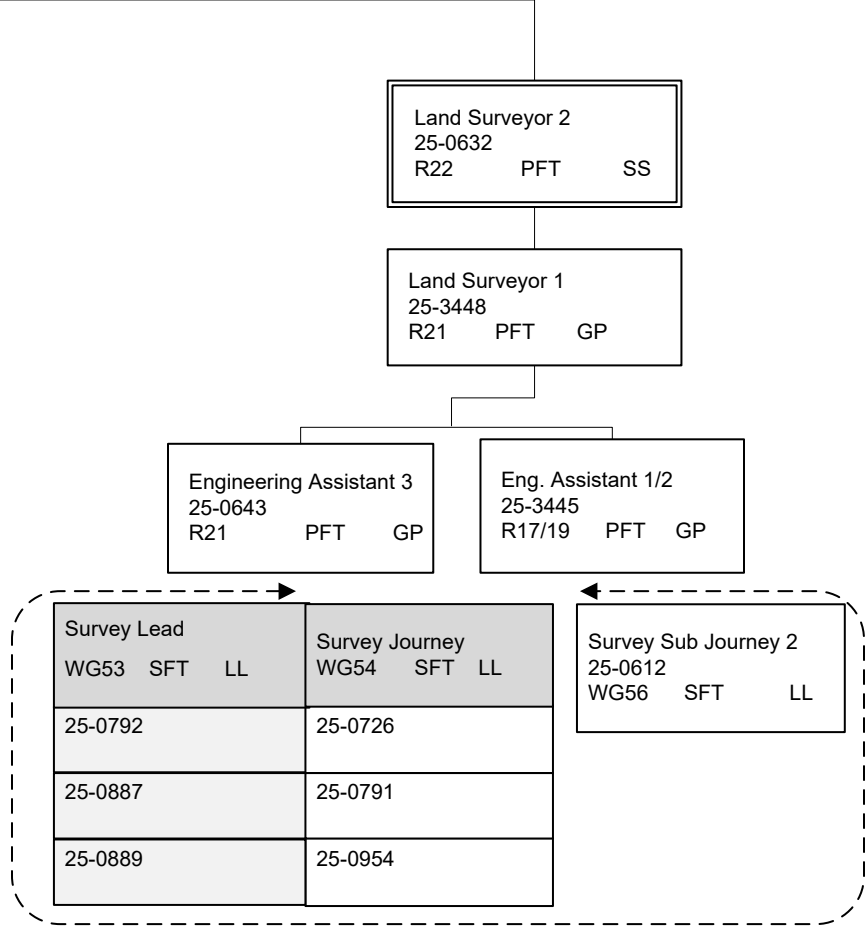
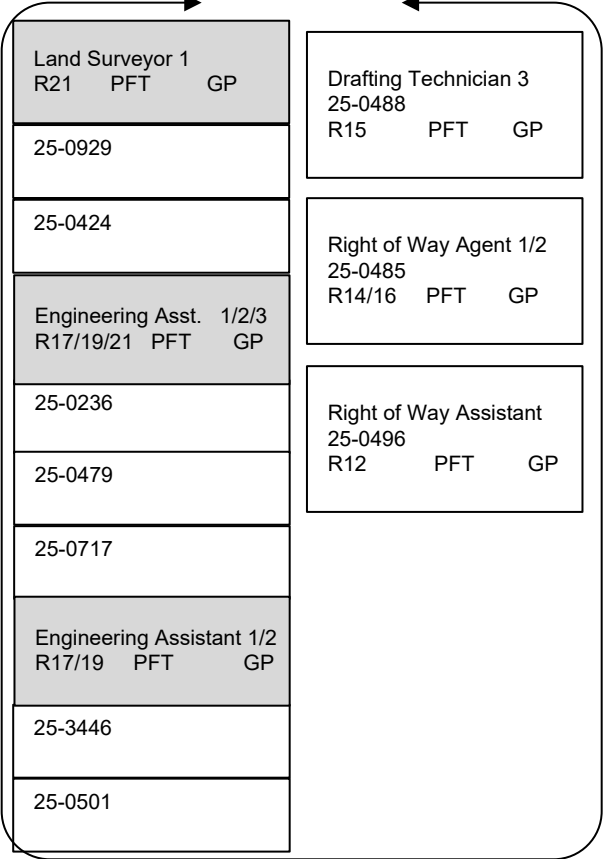


Note: All positions are located in Anchorage.

**RIGHT OF WAY GROUP CHIEF**  
 Engineer/Architect 4  
 25-0771  
 R26      PFT      SS

Land Survey Manager 1  
 25-0423  
 R23      PFT      SS

**LOCATION SERVICES & ROW ENGINEERING**



Note: All positions are located in Anchorage.

<b>RIGHT OF WAY GROUP CHIEF</b>		
Engineer/Architect 4		
25-0771		
R26	PFT	SS

PROJECT COORDINATION

ACQUISITION

ADMINISTRATIVE SERVICES

PROPERTY & DATABASE MANAGEMENT

Right of Way Agent 4		
25-0473		
R20	PFT	SS

Right of Way Agent 4		
25-0474		
R20	PFT	SS

Administrative Asst. 3		
25-0242		
R15	PFT	GP

Right of Way Agent 4		
25-2301		
R20	PFT	SS

Right of Way Agent 3		
R18 PFT GP		
25-0433		
25-0476		
Right of Way Agent 2		
R16 PFT GP		
25-0499		
25-0712		

Right of Way Agent 3		
R18 PFT GP		
25-0421		
25-0477		
Right of Way Agent 2/3		
R16/18 PFT GP		
25-0486		
25-0695		
Right of Way Agent 1		
25-0561		
R14 PFT GP		
Right of Way Agent 1/2		
25-0719		
R14/16 PFT GP		

Office Assistant 2		
25-0452		
R10	PFT	GP

Right of Way Agent 3		
R18 PFT GP		
25-0480		
25-3447		
Right of Way Assistant		
25-0492		
R12 PFT GP		
Right of Way Agent 2		
R16 PFT GP		
25-0482		
25-3683		
25-3684		
Right of Way Agent 1/2		
R14/16 PFT GP		
25-0427		
25-0715		

DEPARTMENT OF TRANSPORTATION AND PUBLIC FACILITIES  
 RDU: DESIGN AND CONSTRUCTION  
 COMPONENT: CENTRAL DESIGN AND ENGINEERING SERVICES (2298)  
 FY2023 GOVERNORS BUDGET

TRAFFIC, SAFETY, & UTILITIES TOTAL:	
FULL-TIME POSITIONS:	28
PART-TIME POSITIONS:	0
TOTAL	28

Traffic, Safety, & Utilities Group Chief  
 Engineer/Architect 4  
 25-0414  
 R26 PFT SS

Administrative Asst. 1  
 25-0401  
 R12 PFT GP

UTILITY PERMITTING/UTILITY  
 ACCOMODATION & RELOCATION

Engineer/Architect 3  
 25-0623  
 R25 PFT SS

Engineering Assistant 3  
 25-0649  
 R21 PFT GP

EA 3/ Eng. Assoc. / Eng./Arch.1  
 R21/22 PFT GP  
 25-0407  
 25-0652

Engineering Assistant 1/2/3  
 25-0648  
 R17/19/21 PFT GP

Engineering Asst 2/3 R19/21 PFT GP	Engineering Assistant 1/2 R17/19 PFT GP
25-0634	25-0475
25-0635	25-0531
25-0810	25-0805
	25-3444

TRAFFIC SAFETY

PSA Coordinator  
 Engineering Assistant 3  
 25-1431  
 R21 PFT GP

Technical Engineer I/Architect 1  
 25-0627  
 R24 PFT SS

Technical Engineer/Architect I  
 25-0927  
 R24 PFT GP

EA 3/ Eng. Assoc. / Eng./Arch. 1  
 R21/22 PFT GP  
 25-0656  
 25-3736

Engineering Assistant 3  
 25-3443  
 R21 PFT GP

Engineering Assistant 1/2  
 25-0659  
 R17/19 PFT GP

TRAFFIC DESIGN

Engineer/Architect 2  
 25-0672  
 R23 PFT SS

Engineer/Architect 1  
 25-3559  
 R22 PFT GP

Engineering Assistant 3  
 R21 PFT GP  
 25-0628  
 25-0629

Engineering Asst. 1/2/3  
 R17/19/21 PFT GP  
 25-0626  
 25-0821

Drafting Technician 3  
 25-0702  
 R15 PFT GP

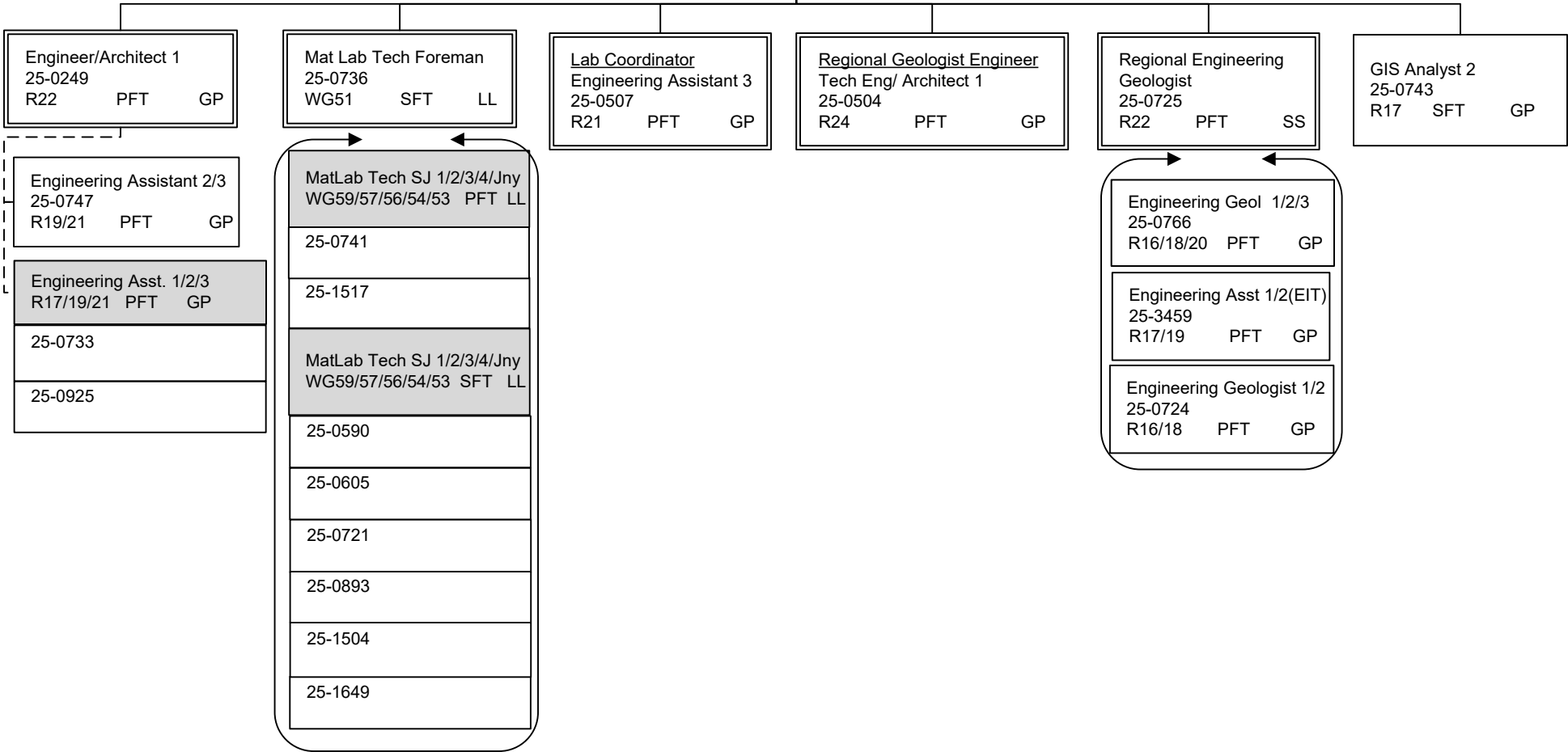
Note: All positions are located in Anchorage.

DEPARTMENT OF TRANSPORTATION AND PUBLIC FACILITIES  
 RDU: DESIGN AND CONSTRUCTION  
 COMPONENT: CENTRAL DESIGN AND ENGINEERING SERVICES (2298)  
 FY2023 GOVERNORS BUDGET

**MATERIALS GROUP CHIEF**  
 Engineer/Architect 4  
 25-0387  
 R26 PFT SS

Office Assistant 2  
 25-0495  
 R10 PFT GP

MATERIALS TOTAL:  
 FULL-TIME POSITIONS: 14  
 SEASONAL FT POSITIONS: 8  
 NON-PERM POSITIONS: 0  
 TOTAL 22



Note: All positions are located in Anchorage.

DEPARTMENT OF TRANSPORTATION AND PUBLIC FACILITIES  
RDU: DESIGN AND CONSTRUCTION  
COMPONENT: CENTRAL DESIGN AND ENGINEERING SERVICES (2298)  
FY2023 GOVERNORS BUDGET

MAT-SU BRANCH TOTAL:	
FULL-TIME POSITIONS:	1
PART-TIME POSITIONS:	0
TOTAL	1

MAT-SU GROUP CHIEF		
Engineer/Architect 4		
25-3868		
R26	PFT	SS

DEPARTMENT OF TRANSPORTATION AND PUBLIC FACILITIES  
 RDU: DESIGN AND CONSTRUCTION  
 COMPONENT: CENTRAL DESIGN AND ENGINEERING SERVICES (2298)  
 FY2023 GOVERNORS BUDGET

YEAR ROUND COLLEGE INTERNS

NON-PERM TOTAL:	
FULL-TIME POSITIONS:	0
PART-TIME POSITIONS:	0
NON-PERM POSITIONS:	6
TOTAL	6

College Intern I/II (FLEX) 25IN1215 R8/9	EE
--	----

College Intern I/II/III/IV (FLEX) R8/9/10/12 EE	
25IN1436	25IN1441
25IN1437	25IN1503
25IN1438	

Note: All positions are located in Anchorage.