

DEPARTMENT OF TRANSPORTATION AND PUBLIC FACILITIES  
 RDU: DESIGN AND CONSTRUCTION  
 COMPONENT: CENTRAL DESIGN AND ENGINEERING SERVICES (2298)  
 FY2023 GOVERNORS BUDGET

**REGIONAL PRECONSTRUCTION ENGINEER**  
 Engineer/Architect 5  
 25-0382  
 R27                      PFT                      SS

COMPONENT TOTAL:  
 FULL-TIME POSITIONS: 165  
 SEASONAL FT POSITIONS: 15  
 NON-PERM POSITIONS: 7  
 GRAND TOTAL: 187

REGIONAL OFFICE TOTAL:  
 FULL-TIME POSITIONS: 4  
 PART-TIME POSITIONS: 0  
 NON-PERM POSITIONS: 1  
 TOTAL: 5

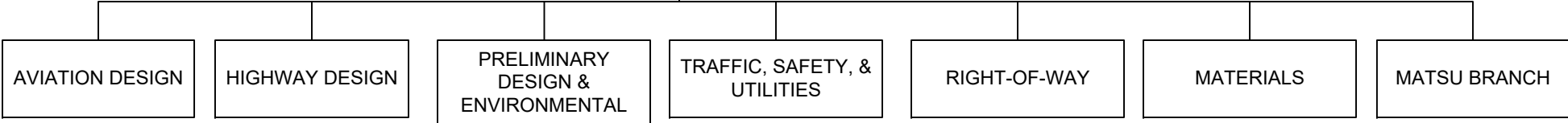
Electrical Engineer  
 Technical Engineer/Architect 2  
 25T011  
 R25                      NPFT                      PX

Administrative Officer 1  
 25-0175  
 R17                      PFT                      GP

Administrative Assistant 1  
 25-0497  
 R12                      PFT                      GP

COMPONENT  
 INTERNS

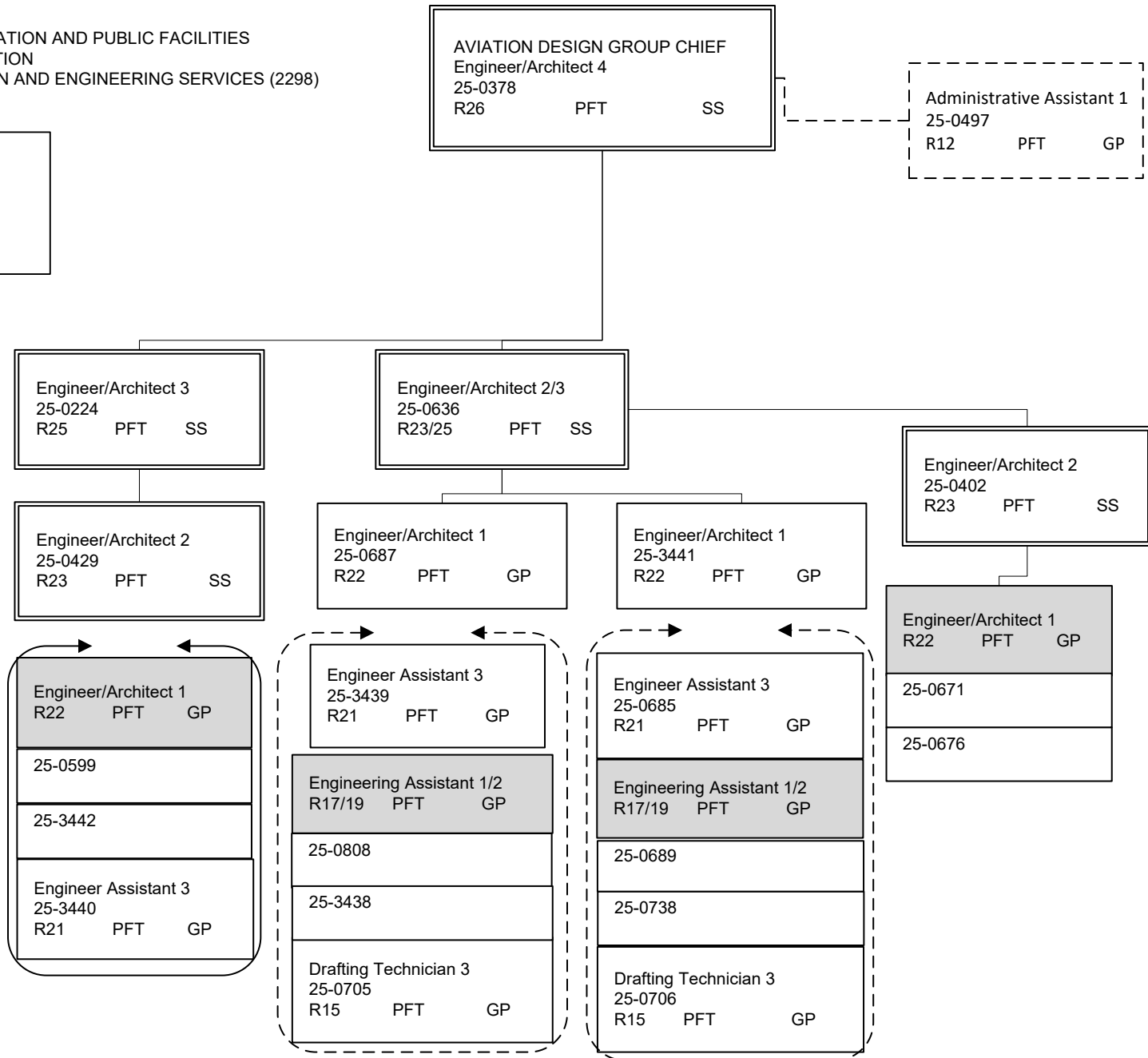
Office Assistant 1  
 25-0468  
 R8                      PFT                      GP



Note: All positions are located in Anchorage.

DEPARTMENT OF TRANSPORTATION AND PUBLIC FACILITIES  
 RDU: DESIGN AND CONSTRUCTION  
 COMPONENT: CENTRAL DESIGN AND ENGINEERING SERVICES (2298)  
 FY2023 GOVERNORS BUDGET

AVIATION DESIGN TOTAL:  
 FULL-TIME POSITIONS: 20  
 PART-TIME POSITIONS: 0  
 TOTAL 20



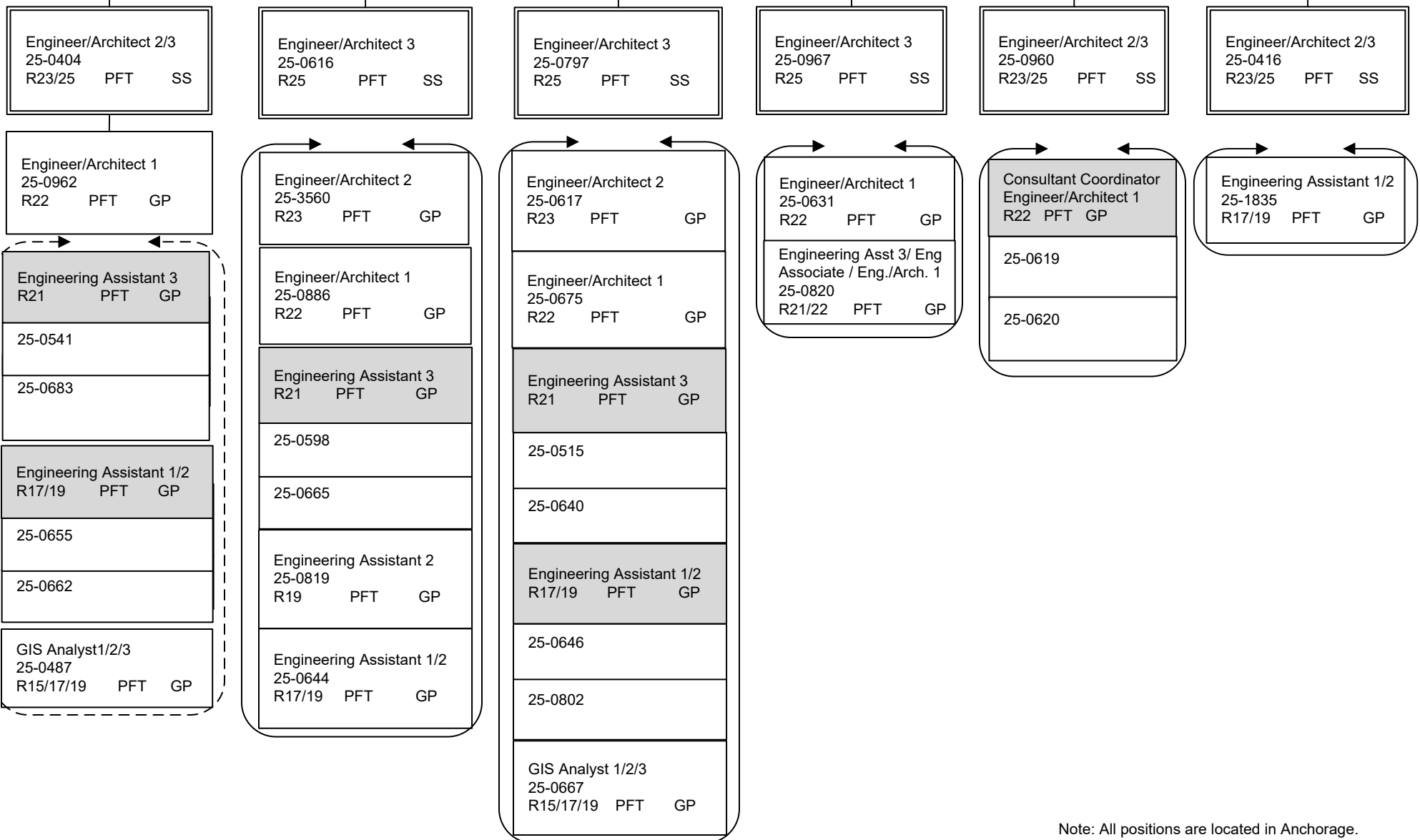
Note: All positions are located in Anchorage.

DEPARTMENT OF TRANSPORTATION AND PUBLIC FACILITIES  
 RDU: DESIGN AND CONSTRUCTION  
 COMPONENT: CENTRAL DESIGN AND ENGINEERING SERVICES (2298)  
 FY2023 GOVERNORS BUDGET

HIGHWAY DESIGN TOTAL:	
FULL-TIME POSITIONS:	31
PART-TIME POSITIONS:	0
NON-PERM POSITIONS:	0
TOTAL	31

HIGHWAY DESIGN GROUP CHIEF		
Engineer/Architect 4		
25-0389		
R26	PFT	SS

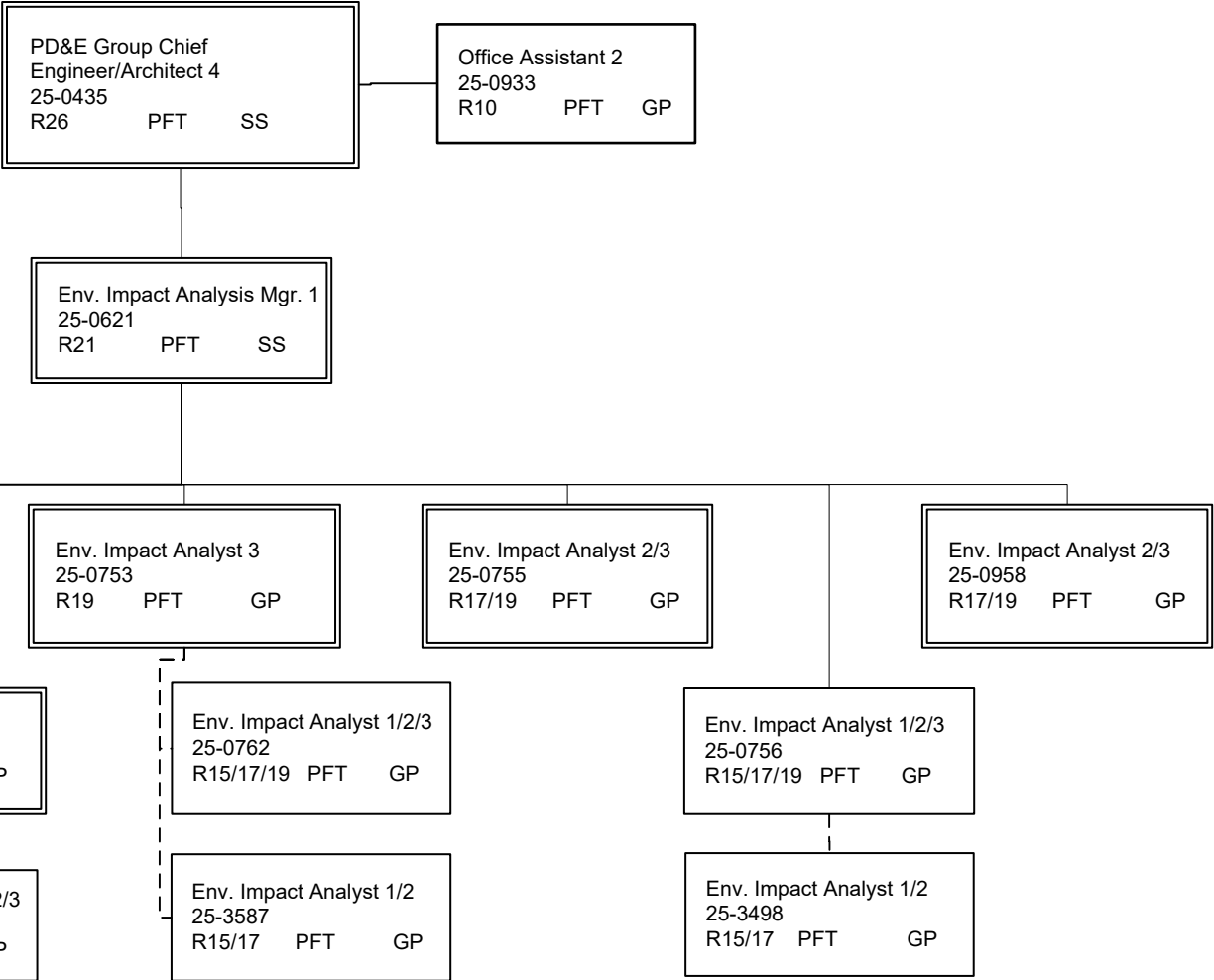
Administrative Assistant 1		
25-0497		
R12	PFT	GP



Note: All positions are located in Anchorage.

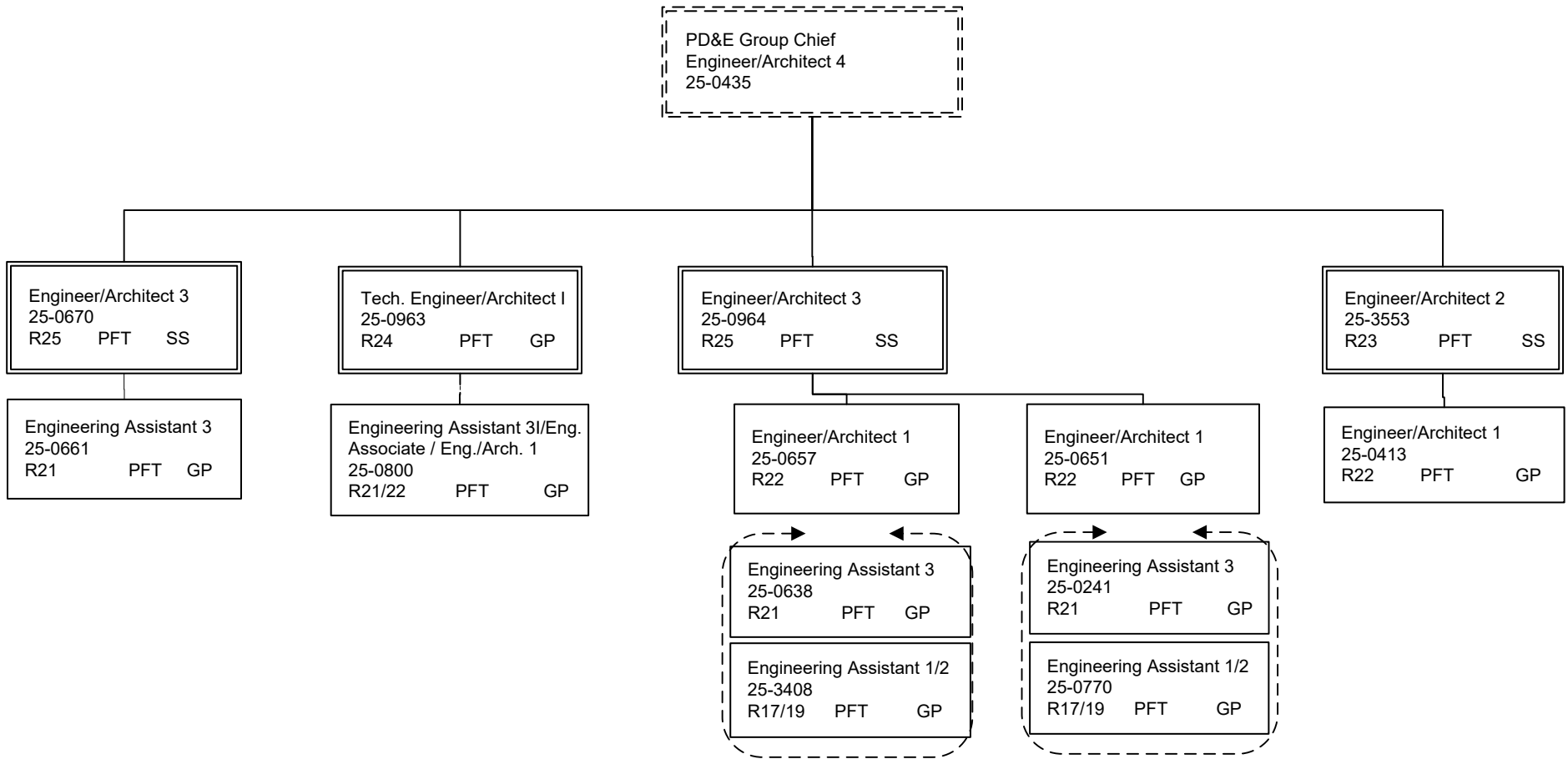
DEPARTMENT OF TRANSPORTATION AND PUBLIC FACILITIES  
 RDU: DESIGN AND CONSTRUCTION  
 COMPONENT: CENTRAL DESIGN AND ENGINEERING SERVICES (2298)  
 FY2023 GOVERNORS BUDGET

PRELIMINARY DESIGN TOTAL:  
 FULL-TIME POSITIONS: 28  
 PART-TIME POSITIONS: 0  
 TOTAL 28



Note: All positions are located in Anchorage.

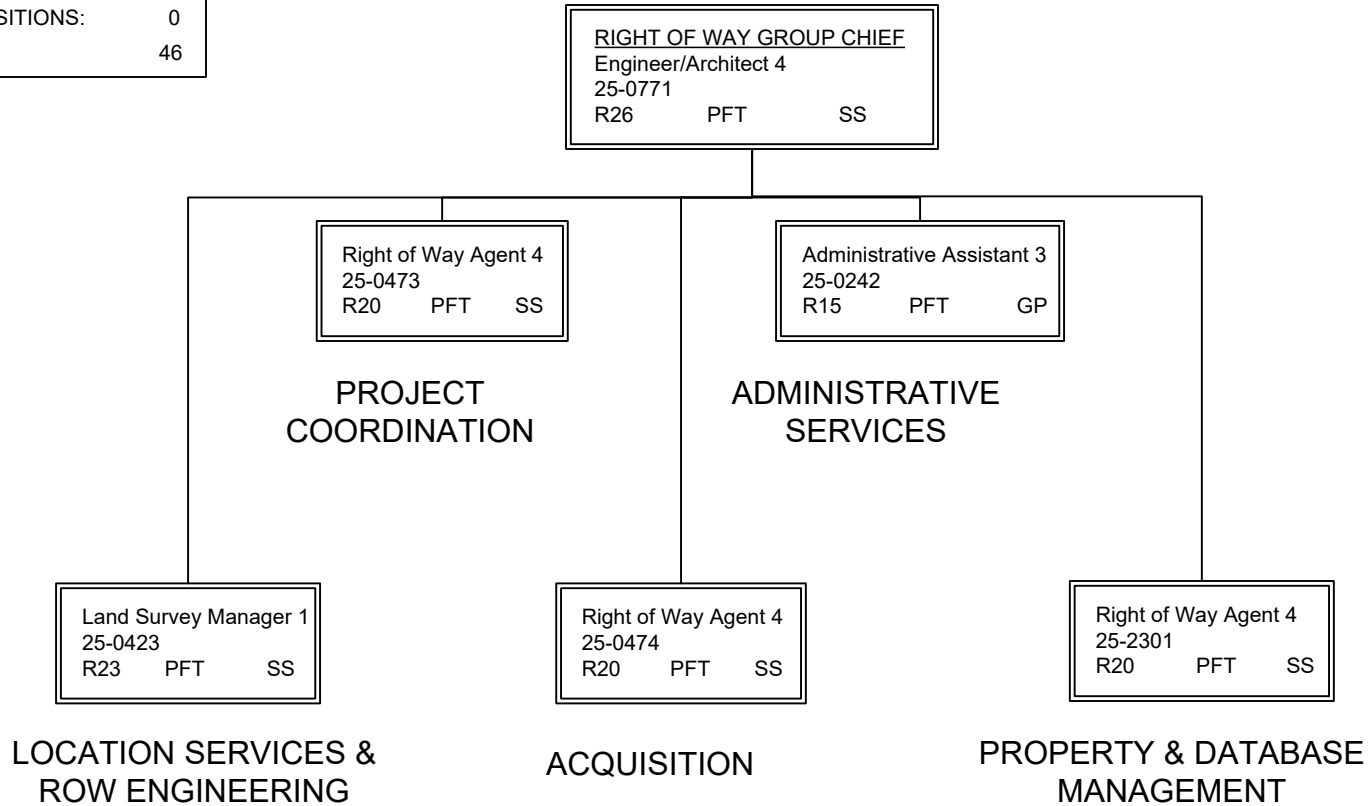
DEPARTMENT OF TRANSPORTATION AND PUBLIC FACILITIES  
 RDU: DESIGN AND CONSTRUCTION  
 COMPONENT: CENTRAL DESIGN AND ENGINEERING SERVICES (2298)  
 FY2023 GOVERNORS BUDGET



Note: All positions are located in Anchorage.

DEPARTMENT OF TRANSPORTATION AND PUBLIC FACILITIES  
 RDU: DESIGN AND CONSTRUCTION  
 COMPONENT: CENTRAL DESIGN AND ENGINEERING SERVICES (2298)  
 FY2023 GOVERNORS BUDGET

RIGHT OF WAY TOTAL:	
FULL-TIME POSITIONS:	39
SEASONAL FT POSITIONS:	7
NON-PERM POSITIONS:	0
TOTAL	46

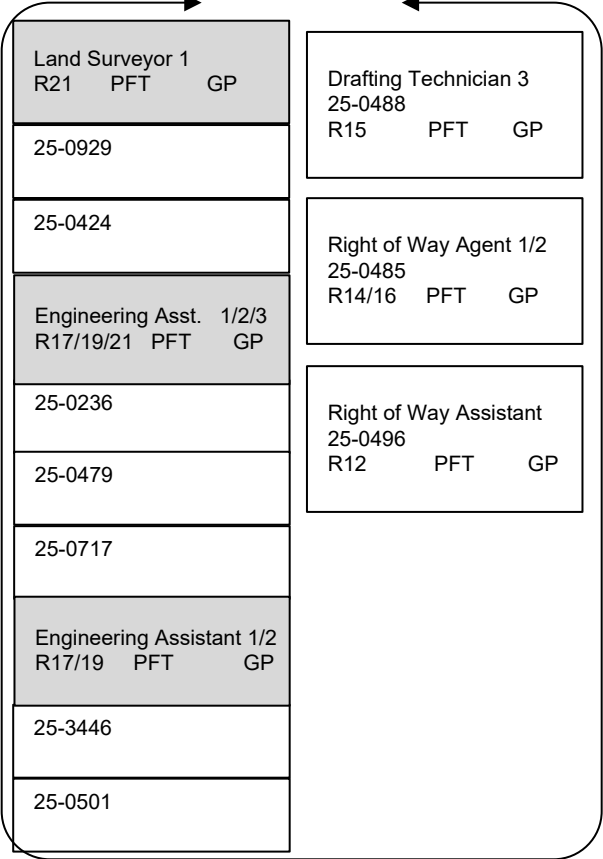


Note: All positions are located in Anchorage.

**RIGHT OF WAY GROUP CHIEF**  
 Engineer/Architect 4  
 25-0771  
 R26 PFT SS

**Land Survey Manager 1**  
 25-0423  
 R23 PFT SS

**LOCATION SERVICES & ROW ENGINEERING**

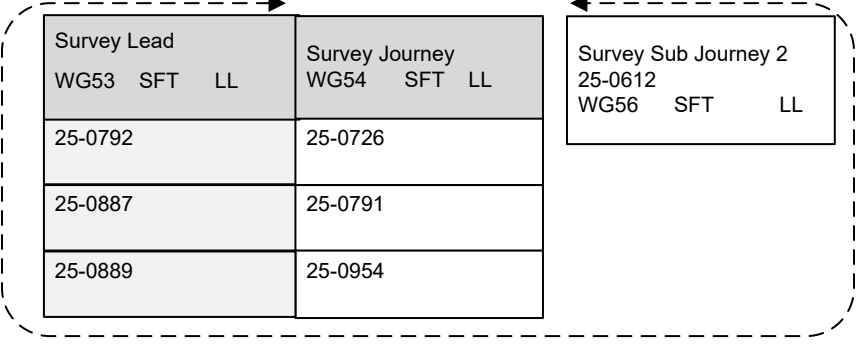


Land Surveyor 2  
 25-0632  
 R22 PFT SS

Land Surveyor 1  
 25-3448  
 R21 PFT GP

Engineering Assistant 3  
 25-0643  
 R21 PFT GP

Eng. Assistant 1/2  
 25-3445  
 R17/19 PFT GP



Note: All positions are located in Anchorage.

<b>RIGHT OF WAY GROUP CHIEF</b>		
Engineer/Architect 4		
25-0771		
R26	PFT	SS

PROJECT COORDINATION

ACQUISITION

ADMINISTRATIVE SERVICES

PROPERTY & DATABASE MANAGEMENT

Right of Way Agent 4		
25-0473		
R20	PFT	SS

Right of Way Agent 4		
25-0474		
R20	PFT	SS

Administrative Asst. 3		
25-0242		
R15	PFT	GP

Right of Way Agent 4		
25-2301		
R20	PFT	SS

Right of Way Agent 3		
R18 PFT GP		
25-0433		
25-0476		
Right of Way Agent 2		
R16 PFT GP		
25-0499		
25-0712		

Right of Way Agent 3		
R18 PFT GP		
25-0421		
25-0477		
Right of Way Agent 2/3		
R16/18 PFT GP		
25-0486		
25-0695		
Right of Way Agent 1		
25-0561		
R14 PFT GP		
Right of Way Agent 1/2		
25-0719		
R14/16 PFT GP		

Office Assistant 2		
25-0452		
R10	PFT	GP

Right of Way Agent 3		
R18 PFT GP		
25-0480		
25-3447		
Right of Way Assistant		
25-0492		
R12 PFT GP		
Right of Way Agent 2		
R16 PFT GP		
25-0482		
25-3683		
25-3684		
Right of Way Agent 1/2		
R14/16 PFT GP		
25-0427		
25-0715		



DEPARTMENT OF TRANSPORTATION AND PUBLIC FACILITIES  
 RDU: DESIGN AND CONSTRUCTION  
 COMPONENT: CENTRAL DESIGN AND ENGINEERING SERVICES (2298)  
 FY2023 GOVERNORS BUDGET

TRAFFIC, SAFETY, & UTILITIES TOTAL:	
FULL-TIME POSITIONS:	28
PART-TIME POSITIONS:	0
TOTAL	28

Traffic, Safety, & Utilities Group Chief  
 Engineer/Architect 4  
 25-0414  
 R26 PFT SS

Administrative Asst. 1  
 25-0401  
 R12 PFT GP

UTILITY PERMITTING/UTILITY  
 ACCOMODATION & RELOCATION

Engineer/Architect 3  
 25-0623  
 R25 PFT SS

Engineering Assistant 3  
 25-0649  
 R21 PFT GP

EA 3/ Eng. Assoc. / Eng./Arch.1  
 R21/22 PFT GP  
 25-0407  
 25-0652

Engineering Assistant 1/2/3  
 25-0648  
 R17/19/21 PFT GP

Engineering Asst 2/3 R19/21 PFT GP	Engineering Assistant 1/2 R17/19 PFT GP
25-0634	25-0475
25-0635	25-0531
25-0810	25-0805
	25-3444

TRAFFIC SAFETY

PSA Coordinator  
 Engineering Assistant 3  
 25-1431  
 R21 PFT GP

Technical Engineer I/Architect 1  
 25-0627  
 R24 PFT SS

Technical Engineer/Architect I  
 25-0927  
 R24 PFT GP

EA 3/ Eng. Assoc. / Eng./Arch. 1  
 R21/22 PFT GP  
 25-0656  
 25-3736

Engineering Assistant 3  
 25-3443  
 R21 PFT GP

Engineering Assistant 1/2  
 25-0659  
 R17/19 PFT GP

TRAFFIC DESIGN

Engineer/Architect 2  
 25-0672  
 R23 PFT SS

Engineer/Architect 1  
 25-3559  
 R22 PFT GP

Engineering Assistant 3  
 R21 PFT GP  
 25-0628  
 25-0629

Engineering Asst. 1/2/3  
 R17/19/21 PFT GP  
 25-0626  
 25-0821

Drafting Technician 3  
 25-0702  
 R15 PFT GP

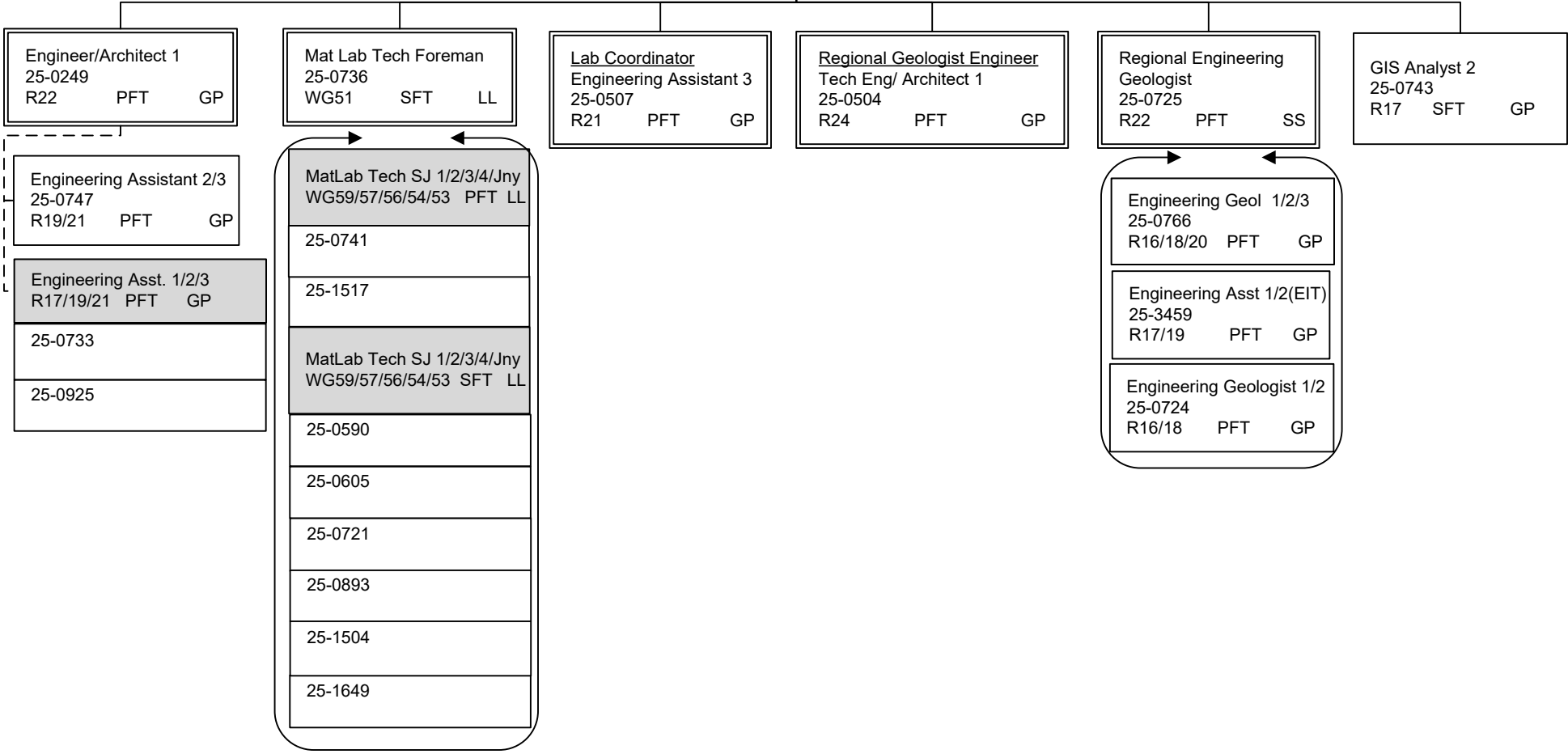
Note: All positions are located in Anchorage.

DEPARTMENT OF TRANSPORTATION AND PUBLIC FACILITIES  
 RDU: DESIGN AND CONSTRUCTION  
 COMPONENT: CENTRAL DESIGN AND ENGINEERING SERVICES (2298)  
 FY2023 GOVERNORS BUDGET

**MATERIALS GROUP CHIEF**  
 Engineer/Architect 4  
 25-0387  
 R26 PFT SS

Office Assistant 2  
 25-0495  
 R10 PFT GP

MATERIALS TOTAL:  
 FULL-TIME POSITIONS: 14  
 SEASONAL FT POSITIONS: 8  
 NON-PERM POSITIONS: 0  
 TOTAL 22



Note: All positions are located in Anchorage.

DEPARTMENT OF TRANSPORTATION AND PUBLIC FACILITIES  
RDU: DESIGN AND CONSTRUCTION  
COMPONENT: CENTRAL DESIGN AND ENGINEERING SERVICES (2298)  
FY2023 GOVERNORS BUDGET

MAT-SU BRANCH TOTAL:	
FULL-TIME POSITIONS:	1
PART-TIME POSITIONS:	0
TOTAL	1

MAT-SU GROUP CHIEF		
Engineer/Architect 4		
25-3868		
R26	PFT	SS

DEPARTMENT OF TRANSPORTATION AND PUBLIC FACILITIES  
 RDU: DESIGN AND CONSTRUCTION  
 COMPONENT: CENTRAL DESIGN AND ENGINEERING SERVICES (2298)  
 FY2023 GOVERNORS BUDGET

YEAR ROUND COLLEGE INTERNS

NON-PERM TOTAL:	
FULL-TIME POSITIONS:	0
PART-TIME POSITIONS:	0
NON-PERM POSITIONS:	6
TOTAL	6

College Intern I/II (FLEX) 25IN1215 R8/9	EE
--	----

College Intern I/II/III/IV (FLEX) R8/9/10/12 EE	
25IN1436	25IN1441
25IN1437	25IN1503
25IN1438	

Note: All positions are located in Anchorage.