

State of Alaska FY2023 Governor's Operating Budget

Department of Transportation/Public Facilities Northern Region Construction and CIP Support Component Budget Summary

Component: Northern Region Construction and CIP Support**Contribution to Department's Mission**

Preserve and improve the transportation system in Alaska and protect the health and safety of Alaska's people by administering the construction of safe, environmentally sound, reliable, and cost-effective highways, airports, and buildings.

Core Services

- Review projects for constructability.
- Provide bidding support services.
- Administer construction contracts.
- Provide information to the public concerning construction projects.
- Provide support for emergency/disaster response when damages to transportation infrastructure require contractor repairs.
- Conduct field inspection and materials testing.
- Close out projects.
- Coordinate with the Civil Rights Office in the administration of the Disadvantaged Business Enterprises program.
- Administer an apprentice program through the Department of Labor and Workforce Development.
- Administer state and federal transportation-related grants.

Major Component Accomplishments in 2021

- Provided construction administration for 43 active construction projects (31 awarded, 12 continued from previous season) across 12 communities in the Northern Region, overseeing \$234,000.0 in contractor payments. \$91,000.0 of these payments were made for improvements in remote Alaska communities including Kotzebue, Kotlik, Nome, Nulato, and Utqiagvik.
- Administered \$70,900.0 in construction project work in the Fairbanks area including continued work on the University Avenue/Geist Road, McGrath Road, Chena Hot Springs Road, and the Richardson Highway projects.
- Delivered major urban construction projects in the Fairbanks area including University Avenue, Wendell Avenue, Third Street Reconstruction, and Chena Hot Springs Road Mile Post 0-6 Reconstruction.
- Completed reconstruction and paving of the farthest north section of the Dalton Highway, near Deadhorse.
- Repaved 78.1 lanes miles, reconstructed 266.7 lane miles, paved 104 lane miles of gravel road, and added 25.7 lane miles to roads and highways.
- Closed out 23 construction projects.
- Conducted formal Department-Contractor partnering on multiple projects in the region.

Key Component Challenges

- Communicating and coordinating with contractors, project stakeholders, and the public regarding construction season traffic impacts.
- Maintaining compliance with the United States Environmental Protection Agency and Department of Environmental Conservation stormwater monitoring responsibilities and requirements.
- Compliance with Federal Highway Administration Work Zone Management requirements across rural and urban settings, including expanding federal oversight regarding pedestrian traffic control and American with Disabilities Act compliance.
- Effectively identifying and resolving claims and unfunded liabilities across the division's construction program – in order to fully utilize federal and non-state funding sources to deliver products and services.
- Reestablishing materials testing accreditation within regional facilities and staff resources.

COVID-19 Response and Telework Challenges

- Division successfully delivered the region construction program while minimizing COVID-19 spread and transmission within the workplace, field, and remote communities.
- COVID-19 considerations limit in-person training opportunities for required personnel certifications, and limit winter training opportunities for the coming construction season.
- Complying with and adapting to policy and regulatory changes for COVID-19.
- Fully integrated tools and technology for remote work capability and productivity including wide scale use of laptops and tablets, use of Microsoft Teams to bring together remote and teleworking employees, continued use of electronic signatures, and utilizing electronic contract administration software (SiteManager) to continue delivering core services.
- Travel restrictions for some communities requires more advanced planning and additional costs for pre-travel COVID-19 testing for staff and consultants.

Significant Changes in Results to be Delivered in FY2023

- Potential 40-50% increase in FHWA funding and 100% increase in FAA funding that may stress resource availability for both DOT&PF employees and the consulting/contracting community (significant increase in dollars/labor force).
- Continue to identify efficiencies across organizational and budget component boundaries for delivery of capital projects. The division will continue to utilize cross-functional teams (across budget and regional boundaries) to deliver Core Services.
- Continue implementation of AASHTOWare Project, and the use of drones, Global Positioning System, three-dimensional and virtually augmented modeling, and other tools to gain efficiencies in construction administration and to further utilize e-Construction technologies.

Statutory and Regulatory Authority

AS 02 Aeronautics
AS 08 Business and Professions
AS 19 Highways and Ferries
AS 34 Property
AS 35 Public Buildings, Works
AS 36 Public Contracts
AS 44 State Government
USC CFR 14 Aeronautics
USC CFR 23 Highways
USC CFR 41 Contracts
USC CFR 43 Lands
USC CFR 49 Transportation

Contact Information
<p>Contact: Michael Lund, P.E., Construction Engineer Phone: (907) 451-5067 E-mail: michael.lund@alaska.gov</p>

Northern Region Construction and CIP Support Personal Services Information				
Authorized Positions			Personal Services Costs	
	<u>FY2022</u> <u>Management</u> <u>Plan</u>	<u>FY2023</u> <u>Governor</u>		
			Annual Salaries	0
Full-time	87	0	Premium Pay	0
Part-time	58	0	Annual Benefits	0
Nonpermanent	5	0	<i>Less 0.00% Vacancy Factor</i>	(0)
			Lump Sum Premium Pay	0
Totals	150	0	Total Personal Services	0

Position Classification Summary					
Job Class Title	Anchorage	Fairbanks	Juneau	Others	Total
No personal services.					
Totals	0	0	0	0	0

Component Detail All Funds
Department of Transportation/Public Facilities

Component: Northern Region Construction and CIP Support (2295)
RDU: Design, Engineering and Construction (526)

Non-Formula Component

	FY2021 Actuals	FY2022 Conference Committee	FY2022 Authorized	FY2022 Management Plan	FY2023 Governor	FY2022 Management Plan vs FY2023 Governor	
71000 Personal Services	19,394.9	18,638.0	18,638.0	18,468.0	0.0	-18,468.0 -100.0%	
72000 Travel	24.1	36.7	36.7	36.7	0.0	-36.7 -100.0%	
73000 Services	537.5	524.9	524.9	524.9	0.0	-524.9 -100.0%	
74000 Commodities	193.1	133.2	133.2	133.2	0.0	-133.2 -100.0%	
75000 Capital Outlay	0.0	0.0	0.0	0.0	0.0	0.0 0.0%	
77000 Grants, Benefits	0.0	0.0	0.0	0.0	0.0	0.0 0.0%	
78000 Miscellaneous	0.0	0.0	0.0	0.0	0.0	0.0 0.0%	
Totals	20,149.6	19,332.8	19,332.8	19,162.8	0.0	-19,162.8 -100.0%	
Fund Sources:							
1004 Gen Fund (UGF)	161.8	283.6	283.6	283.6	0.0	-283.6 -100.0%	
1007 I/A Rcpts (Other)	0.4	0.0	0.0	0.0	0.0	0.0 0.0%	
1061 CIP Rcpts (Other)	19,987.4	19,049.2	19,049.2	18,879.2	0.0	-18,879.2 -100.0%	
Unrestricted General (UGF)	161.8	283.6	283.6	283.6	0.0	-283.6 -100.0%	
Designated General (DGF)	0.0	0.0	0.0	0.0	0.0	0.0 0.0%	
Other Funds	19,987.8	19,049.2	19,049.2	18,879.2	0.0	-18,879.2 -100.0%	
Federal Funds	0.0	0.0	0.0	0.0	0.0	0.0 0.0%	
Positions:							
Permanent Full Time	89	89	89	87	0	-87 -100.0%	
Permanent Part Time	58	58	58	58	0	-58 -100.0%	
Non Permanent	5	5	5	5	0	-5 -100.0%	

Change Record Detail - Multiple Scenarios with Descriptions
Department of Transportation/Public Facilities

Component: Northern Region Construction and CIP Support (2295)
RDU: Design, Engineering and Construction (526)

Scenario/Change Record Title	Trans Type	Totals	Personal Services	Travel	Services	Commodities	Capital Outlay	Grants, Benefits	Miscellaneous	Positions		NP
										PFT	PPT	
***** Changes From FY2022 Conference Committee To FY2022 Authorized *****												
FY2022 Conference Committee												
	ConfCom	19,332.8	18,638.0	36.7	524.9	133.2	0.0	0.0	0.0	89	58	5
1004 Gen Fund		283.6										
1061 CIP Rcpts		19,049.2										
Subtotal		19,332.8	18,638.0	36.7	524.9	133.2	0.0	0.0	0.0	89	58	5
***** Changes From FY2022 Authorized To FY2022 Management Plan *****												
Transfer Admin Positions (25-1806 and 25-1638) to NR Highway & Aviation												
	Trout	-170.0	-170.0	0.0	0.0	0.0	0.0	0.0	0.0	-2	0	0
1061 CIP Rcpts		-170.0										
Northern Region will transfer PCN 25-1806, Office Assistant III, and PCN 25-1638, Administrative Assistant I from Northern Region Construction & CIP Support (NR C&CS) to Northern Region Highways & Aviation (NR H&A) and reclassify 25-1806 to an Accounting Technician 1/2/3 Flex due to reorganization of administrative duties as overall regional efficiencies are realized.												
Positions and funding transfers include:												
Full-time Accounting Technician 1/2/3 (25-1806), GP, range 12/14/16, located in Fairbanks												
Full-time Administrative Assistant 1 (25-1638), GP, range 12, located in Fairbanks												
Subtotal		19,162.8	18,468.0	36.7	524.9	133.2	0.0	0.0	0.0	87	58	5
***** Changes From FY2022 Management Plan To FY2023 Governor *****												
FY2023 PERS Actuarial Rate Adjustment to 24.79% Ch9 SLA2021 (SB55)												
	SalAdj	-598.2	-598.2	0.0	0.0	0.0	0.0	0.0	0.0	0	0	0
1004 Gen Fund		-6.8										
1061 CIP Rcpts		-591.4										
Includes: FY2023 Adjustment for PERS ARM Board Approved Rate of 24.79% (from 30.11%): \$-598.2												
FY2023 Labor, Trades, and Crafts Salary and Benefit Adjustments												
	SalAdj	117.0	117.0	0.0	0.0	0.0	0.0	0.0	0.0	0	0	0
1061 CIP Rcpts		117.0										
FY2023 Labor, Trades, and Crafts 3.25% COLA: \$117.0												
FY2023 Salary and Benefit Adjustments												
	SalAdj	158.4	158.4	0.0	0.0	0.0	0.0	0.0	0.0	0	0	0
1004 Gen Fund		3.1										

Change Record Detail - Multiple Scenarios with Descriptions
Department of Transportation/Public Facilities

Component: Northern Region Construction and CIP Support (2295)
RDU: Design, Engineering and Construction (526)

Scenario/Change Record Title	Trans Type	Totals	Personal Services	Travel	Services	Commodities	Capital Outlay	Grants, Benefits	Miscellaneous	Positions		NP
										PFT	PPT	
1061 CIP Rcpts		155.3										
Includes: FY2023 Supervisory Unit 1% COLA: \$25.2												
FY2023 Change General Government Unit (GG, GP, GY, GZ) - SBS, and Risk Management Rates: \$70.9												
FY2023 Change Labor, Trades, and Crafts LTC (LL) - SBS and Risk Management Rates: \$23.2												
FY2023 Change Supervisory Employees (SS) - Health Insurance from \$1,555 to \$1,685; SBS and Risk Management Rates: \$37.6												
FY2023 Change Partially Exempt & Exempt Executive (EE) - Health Insurance from \$1,555 to \$1,685; SBS and Risk Management Rates: \$1.5												
Cost Savings Realized Through OIT PBX Phone Rate Decreases												
1004 Gen Fund	Dec	-7.5	0.0	0.0	-7.5	0.0	0.0	0.0	0.0	0	0	0
The Department of Transportation has realized a cost savings through the Office of Information Technology (OIT) rate decrease on PBX (private branch exchange, private telephone switchboard).												
Combine Northern Region Construction Component for Better Alignment												
1004 Gen Fund	Trout	-18,832.5	-18,145.2	-36.7	-517.4	-133.2	0.0	0.0	0.0	-87	-58	-5
1061 CIP Rcpts		-18,690.8										
A reorganization of Northern Region Design & Construction sections implemented a project delivery team structure that was piloted starting in 2017. A project delivery team is an organizational structure that combines planning, preconstruction, and construction disciplines to deliver high quality transportation projects that improve safety, mobility, and infrastructure condition, with a long-term objective to reduce operating costs. The model established clear performance measures and increased efficiency and effectiveness while focusing all divisions on long-term corridor/community planning within available capital funding. Delivery teams align staff to a common goal, promote team efforts in decision making, and encourage staff to work across disciplines to minimize hand offs.												
The structure combines staff and resources from both Design & Construction into a single team, therefore making component and budget distinctions obsolete. The region benefits from having positions and support budgets combined to a single regional component, streamlining budget and fiscal processes to maximize administrative and operational efficiencies.												
Realign PERS Rate Adjustment by Fund Source Ch9 SLA2021 (SB55)												
1004 Gen Fund	FndChg	-118.3	0.0	0.0	0.0	0.0	0.0	0.0	0.0	0	0	0
1061 CIP Rcpts		118.3										

Remove one-time UGF subsidy assigned in SB55 fiscal note (Ch 9 SLA 2021).

Fund Source Swap UGF to CIP Receipts

Change Record Detail - Multiple Scenarios with Descriptions
Department of Transportation/Public Facilities

Component: Northern Region Construction and CIP Support (2295)

RDU: Design, Engineering and Construction (526)

Scenario/Change Record Title	Trans Type	Totals	Personal Services	Travel	Services	Commodities	Capital Outlay	Grants, Benefits	Miscellaneous	Positions		NP
										PFT	PPT	
	FndChg	0.0	0.0	0.0	0.0	0.0	0.0	0.0	0.0	0	0	0
1004 Gen Fund		-12.4										
1061 CIP Rcpts		12.4										
Fund source swap from unrestricted general fund to indirect cost allocation plan receipt authority to align actual expenditures to fund source.												
	Totals	0.0	0.0	0.0	0.0	0.0	0.0	0.0	0.0	0	0	0

Line Item Detail (1676)
Department of Transportation/Public Facilities
Travel

Component: Northern Region Construction and CIP Support (2295)

Line Number	Line Name		FY2021 Actuals	FY2022 Management Plan	FY2023 Governor
2000	Travel		24.1	36.7	0.0
Object Class	Servicing Agency	Explanation	FY2021 Actuals	FY2022 Management Plan	FY2023 Governor
2000 Travel Detail Totals			24.1	36.7	0.0
2000	In-State Employee Travel	In-state employee travel.	24.1	32.7	0.0
2002	Out of State Employee Travel	Out of state employee travel.	0.0	4.0	0.0

Line Item Detail (1676)
Department of Transportation/Public Facilities
Services

Component: Northern Region Construction and CIP Support (2295)

Line Number	Line Name		FY2021 Actuals	FY2022 Management Plan	FY2023 Governor
3000	Services		537.5	524.9	0.0
Object Class	Servicing Agency	Explanation	FY2021 Actuals	FY2022 Management Plan	FY2023 Governor
3000 Services Detail Totals			537.5	524.9	0.0
3000	Education Services	Conference registration fees, membership dues and employee tuition fees (excluding Information Technology).	9.1	5.0	0.0
3003	Information Technology	All information technology (IT) contractual costs such as software licensing, software maintenance, IT training, IT consulting, and IT equipment leases.	59.6	47.2	0.0
3004	Telecommunications	Long distance and cellular phones.	15.1	30.0	0.0
3005	Health Services	COVID testing	0.1	0.0	0.0
3006	Delivery Services	Delivery services.	7.2	0.0	0.0
3007	Advertising and Promotions	Advertising and local media	31.2	1.5	0.0
3008	Utilities	Utilities	36.7	2.0	0.0
3009	Structure/Infrastructure/Land	Maintenance agreements for copiers and fax machines, and office equipment repairs as needed.	7.1	0.0	0.0
3010	Equipment/Machinery	Rental or lease of office and other equipment as needed.	17.7	11.1	0.0
3010	Equipment/Machinery	Rental or lease of office and other equipment as needed.	0.0	8.4	0.0
3011	Other Services	Safety services.	38.9	26.0	0.0
3017	Inter-Agency Information Technology Non-Telecommunications	Admin - Department-wide Computer services provided by Department of Administration such as central server, data storage, printing, network services, open	196.0	200.9	0.0

Line Item Detail (1676)
Department of Transportation/Public Facilities
Services

Component: Northern Region Construction and CIP Support (2295)

Object Class	Servicing Agency	Explanation	FY2021 Actuals	FY2022 Management Plan	FY2023 Governor
3000 Services Detail Totals			537.5	524.9	0.0
		connect, and task order system.			
3018	Inter-Agency Information Technology Telecommunications	Admin - Department-wide Telecommunications services provided by the Department of Administration such as basic telephone services, equipment and features, dedicated voice/data line service, statewide paging, two-way radio, and video conferencing.	35.6	34.0	0.0
3021	Inter-Agency Mail	Admin - Department-wide Chargeback fees for central mail services such as mailing vendor payments and payroll warrants.	0.0	1.0	0.0
3022	Inter-Agency Human Resources	Admin - Department-wide Interagency Human Resource chargeback fees.	0.0	85.8	0.0
3022	Inter-Agency Human Resources	Gov - Department-wide Interagency Human Resource chargeback fees.	0.5	0.0	0.0
3024	Inter-Agency Legal	Law - Department-wide Legal services provided by the Department of Law.	2.1	5.0	0.0
3026	Inter-Agency Insurance	Admin - Department-wide Risk management.	0.0	1.4	0.0
3027	Inter-Agency Financial	Admin - Department-wide Chargeback fees for AKPAY/IRIS/ALDER.	54.4	54.5	0.0
3028	Inter-Agency Americans with Disabilities Act Compliance	Admin - Department-wide Chargeback fees for the statewide coordinator for the Americans with Disabilities Act (ADA).	0.9	1.1	0.0
3037	State Equipment Fleet	Trans - State Equipment Fleet (2791) SEF operating and replacement fees, credit card fuel, and vehicle maintenance and repairs. Budgeted amounts, if any, are for operating budget vehicles only; prior years actuals amount includes the cost of capital improvement project (CIP) vehicles, funded with unbudgeted RSAs.	24.8	10.0	0.0
3039	DOT/PF Time & Equipment System	Vehicle usage billed to the operating	0.5	0.0	0.0

Line Item Detail (1676)
Department of Transportation/Public Facilities
Services

Component: Northern Region Construction and CIP Support (2295)

Object Class	Servicing Agency	Explanation	FY2021 Actuals	FY2022 Management Plan	FY2023 Governor
3000 Services Detail Totals			537.5	524.9	0.0
<p style="text-align: center;">budget based on established rates and actual usage of vehicles.</p>					

Line Item Detail (1676)
Department of Transportation/Public Facilities
Commodities

Component: Northern Region Construction and CIP Support (2295)

Line Number	Line Name		FY2021 Actuals	FY2022 Management Plan	FY2023 Governor
4000	Commodities		193.1	133.2	0.0
Object Class	Servicing Agency	Explanation	FY2021 Actuals	FY2022 Management Plan	FY2023 Governor
4000 Commodities Detail Totals			193.1	133.2	0.0
4000	Business	Office and instructional supplies. Includes consumable supplies such as paper, general office supplies, copy machine supplies, photographic supplies, and subscriptions. Also includes non-consumable supplies costing less than \$5,000 such as furniture and office equipment.	93.5	49.7	0.0
4000	Business	Office and instructional supplies. Includes consumable supplies such as paper, general office supplies, copy machine supplies, photographic supplies, and subscriptions. Also includes non-consumable supplies costing less than \$5,000 such as furniture and office equipment.	32.5	31.5	0.0
4000	Business	Office and instructional supplies. Includes consumable supplies such as paper, general office supplies, copy machine supplies, photographic supplies, and subscriptions. Also includes non-consumable supplies costing less than \$5,000 such as furniture and office equipment.	7.6	10.0	0.0
4002	Household/Institutional	Cleaning supplies; aprons and gloves for materials laboratory.	0.6	2.0	0.0
4003	Scientific and Medical	Materials Lab equipment.	15.4	20.0	0.0
4004	Safety	Safety gear for survey crew.	23.8	10.0	0.0

Line Item Detail (1676)
Department of Transportation/Public Facilities
Commodities

Component: Northern Region Construction and CIP Support (2295)

Object Class	Servicing Agency	Explanation	FY2021 Actuals	FY2022 Management Plan	FY2023 Governor
4000 Commodities Detail Totals			193.1	133.2	0.0
4005	Building Materials	Building materials.	0.1	0.0	0.0
4015	Parts and Supplies	Parts and supplies.	6.6	0.0	0.0
4016	Paint/Preservatives	Paint and preservatives.	0.1	0.0	0.0
4019	Small Tools/Minor Equipment	Small Tools/Minor Equipment.	12.8	10.0	0.0
4020	Equipment Fuel	Equipment fuel.	0.1	0.0	0.0

Revenue Detail (1681)
Department of Transportation/Public Facilities

Component: Northern Region Construction and CIP Support (2295)

Revenue Type (OMB Fund Code) Revenue Source	Component	Comment	FY2021 Actuals	FY2022 Management Plan	FY2023 Governor
5007 I/A Rcpts (1007 I/A Rcpts)			0.4	0.0	0.0
5301 Inter-Agency Receipts		Reimbursement from any state agency's operating budget for services provided. Typical requests are for professional construction management. Specific agreements and departments served vary from year to year.	0.4	0.0	0.0
5061 CIP Rcpts (1061 CIP Rcpts)			19,987.4	18,879.2	0.0
5351 Capital Improvement Project Inter-Agency		Capital improvement project receipts for work in direct support of capital projects.	17,116.0	16,079.6	0.0
5351 Capital Improvement Project Inter-Agency		Capital improvement project receipts for work in direct support of capital projects.	2,871.4	2,799.6	0.0

Inter-Agency Services (1682)
Department of Transportation/Public Facilities

Component: Northern Region Construction and CIP Support (2295)

	FY2021 Actuals	FY2022 Management Plan	FY2023 Governor
Component Totals	314.3	393.7	0.0
With Department of Administration	286.9	378.7	0.0
With Office of the Governor	0.5	0.0	0.0
With Department of Law	2.1	5.0	0.0
With Department of Transportation/Public Facilities	24.8	10.0	0.0

Object Class	Servicing Agency	Explanation	FY2021 Actuals	FY2022 Management Plan	FY2023 Governor
3017	Inter-Agency Information Technology Non-Telecommunications	Admin - Department-wide	196.0	200.9	0.0
		Computer services provided by Department of Administration such as central server, data storage, printing, network services, open connect, and task order system.			
3018	Inter-Agency Information Technology Telecommunications	Admin - Department-wide	35.6	34.0	0.0
		Telecommunications services provided by the Department of Administration such as basic telephone services, equipment and features, dedicated voice/data line service, statewide paging, two-way radio, and video conferencing.			
3021	Inter-Agency Mail	Admin - Department-wide	0.0	1.0	0.0
		Chargeback fees for central mail services such as mailing vendor payments and payroll warrants.			
3022	Inter-Agency Human Resources	Admin - Department-wide	0.0	85.8	0.0
		Interagency Human Resource chargeback fees.			
3022	Inter-Agency Human Resources	Gov - Department-wide	0.5	0.0	0.0
		Interagency Human Resource chargeback fees.			
3024	Inter-Agency Legal	Law - Department-wide	2.1	5.0	0.0
		Legal services provided by the Department of Law.			
3026	Inter-Agency Insurance	Admin - Department-wide	0.0	1.4	0.0
		Risk management.			
3027	Inter-Agency Financial	Admin - Department-wide	54.4	54.5	0.0
		Chargeback fees for AKPAY/IRIS/ALDER.			
3028	Inter-Agency Americans with	Admin - Department-wide	0.9	1.1	0.0
		Chargeback fees for the statewide			

Inter-Agency Services (1682)
Department of Transportation/Public Facilities

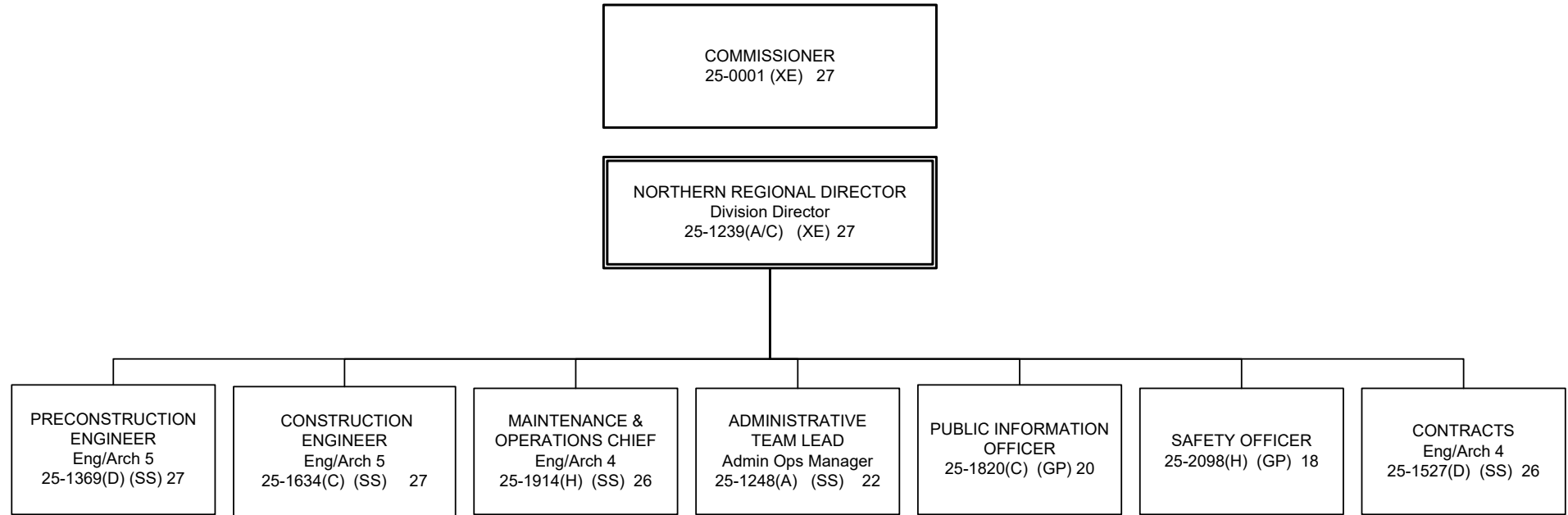
Component: Northern Region Construction and CIP Support (2295)

Object Class	Servicing Agency	Explanation	FY2021 Actuals	FY2022 Management Plan	FY2023 Governor
Disabilities Act Compliance		coordinator for the Americans with Disabilities Act (ADA).			
3037 State Equipment Fleet	Trans - State Equipment Fleet (2791)	SEF operating and replacement fees, credit card fuel, and vehicle maintenance and repairs. Budgeted amounts, if any, are for operating budget vehicles only; prior years actuals amount includes the cost of capital improvement project (CIP) vehicles, funded with unbudgeted RSAs.	24.8	10.0	0.0

Personal Services Expenditure Detail
Department of Transportation/Public Facilities

Scenario: FY2023 Governor (18673)
Component: Northern Region Construction and CIP Support (2295)
RDU: Design, Engineering and Construction (526)

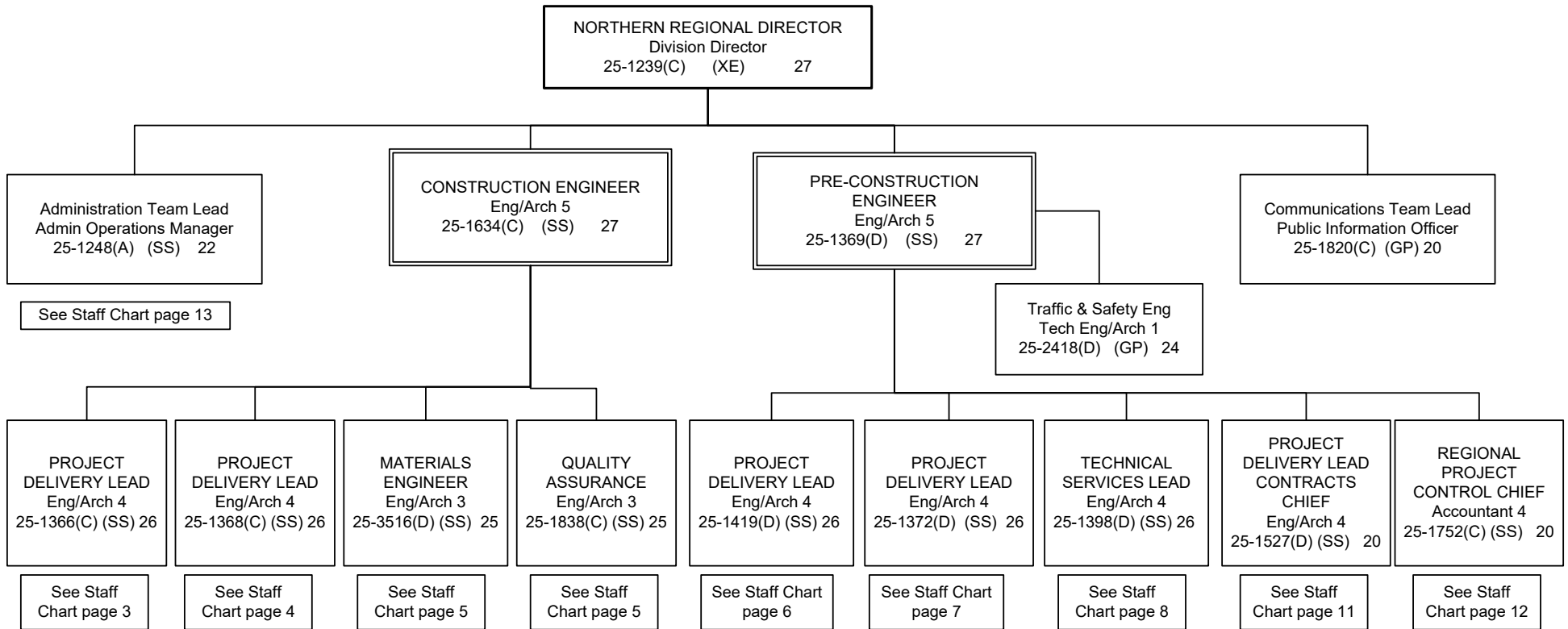
Note: If a position is split, an asterisk (*) will appear in the Split/Count column. If the split position is also counted in the component, two asterisks (**) will appear in this column.
[No valid job title] appearing in the Job Class Title indicates that the PCN has an invalid class code or invalid range for the class code effective date of this scenario.



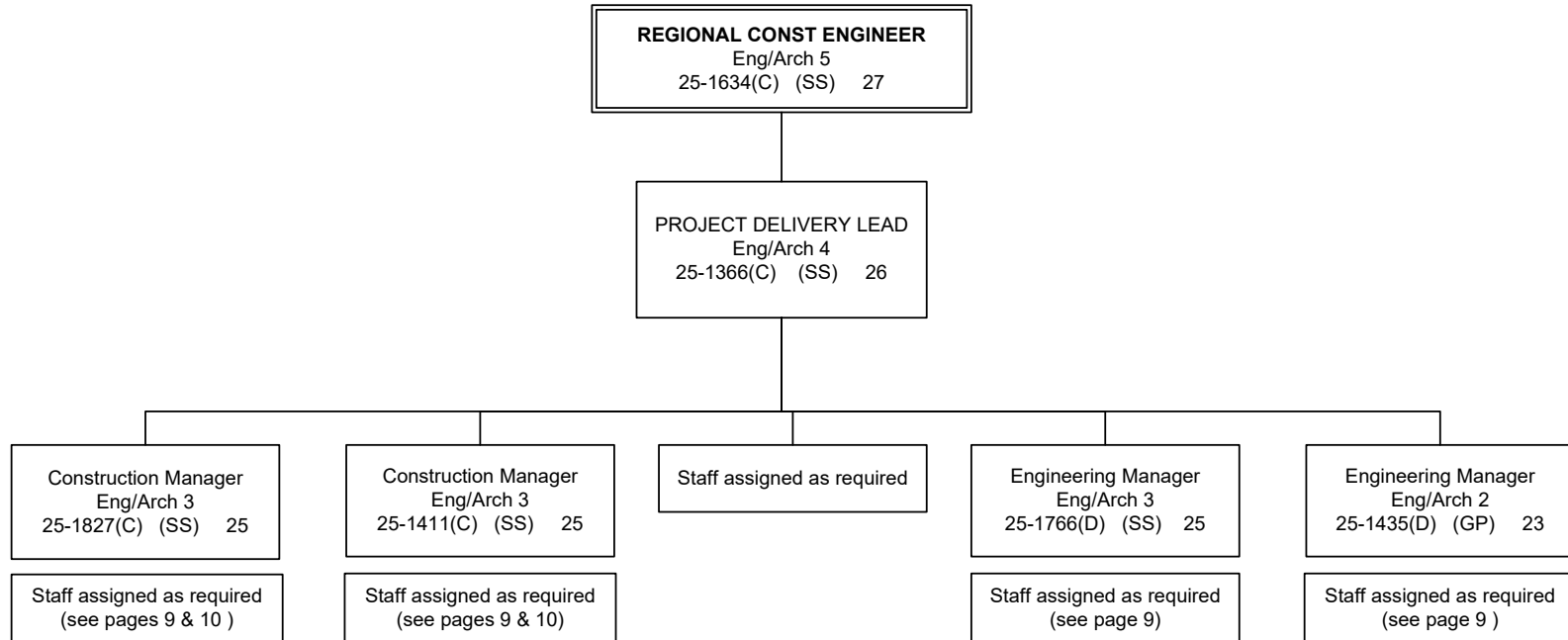
Key:

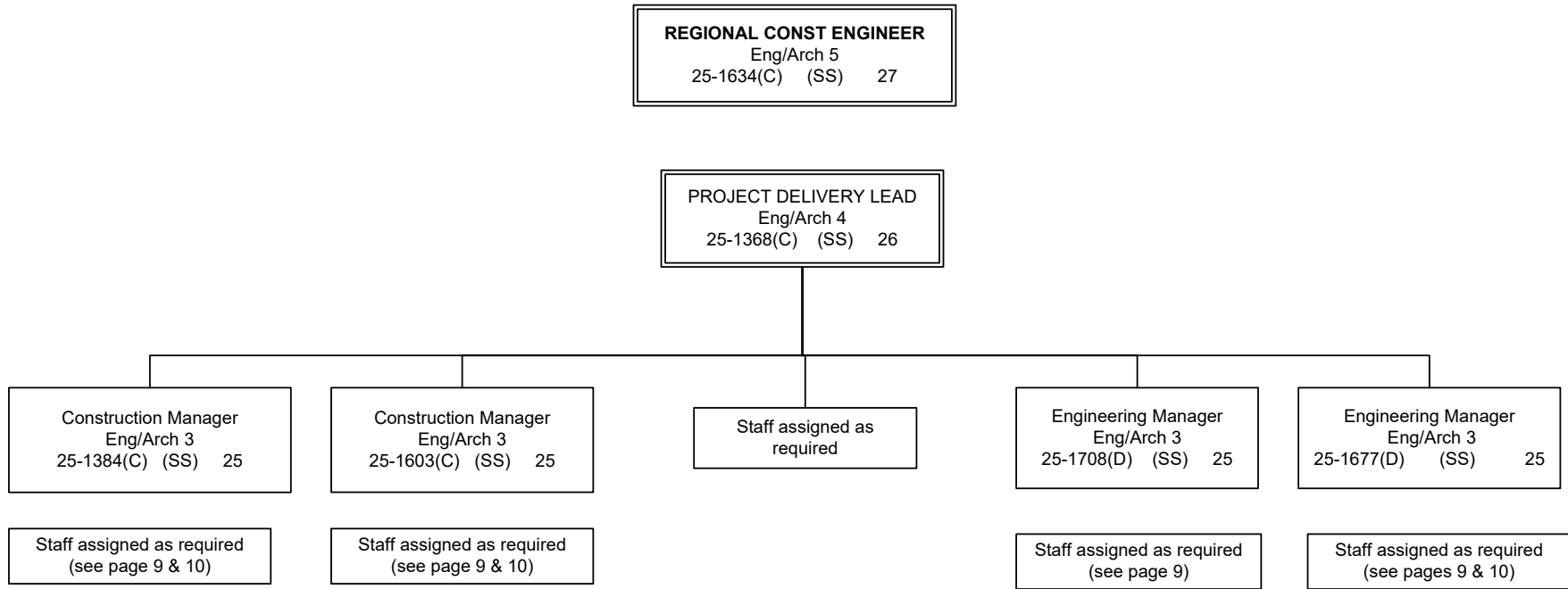
- (A) Admin Support Services Budget Component
- (C) Construction & CIP Support Budget Component**
- (D) Design & Engineering Svc Budget Component
- (H) Highway & Aviation Budget Component
- (S) Seasonal Position Type (SACL Budget Type)
- (GP) General Government Bargaining Unit
- (LL) Labor, Trades Bargaining Unit
- (SS) Supervisory Bargaining Unit
- (XE) Exempt Position

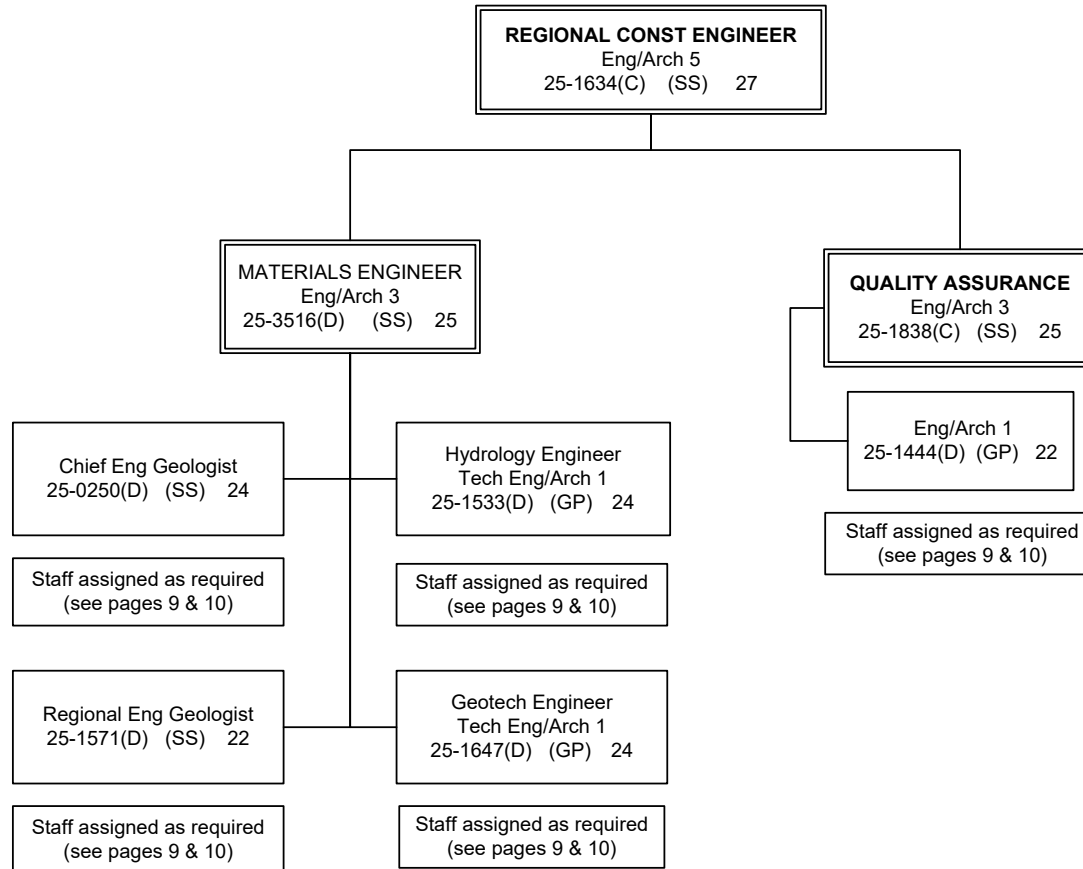
- J1 Journey 1
- J2 Journey 2
- J3 Journey 3
- SJ1 Sub-Journey 1
- SJ2 Sub-Journey 2

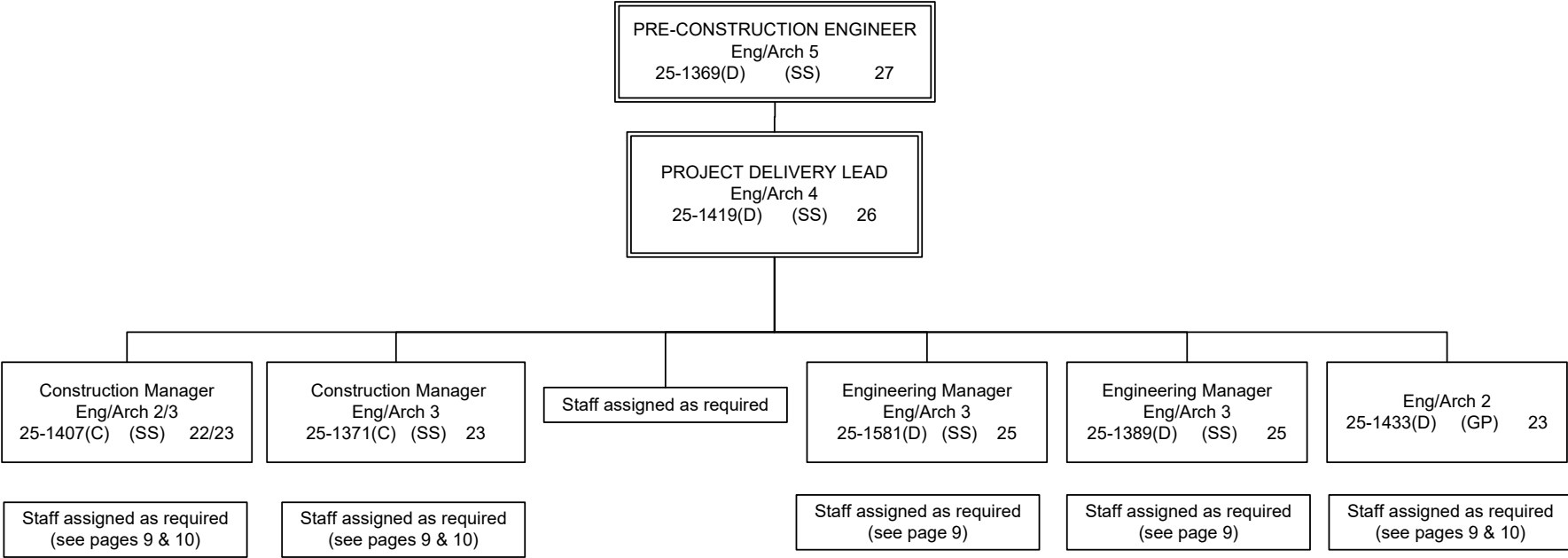


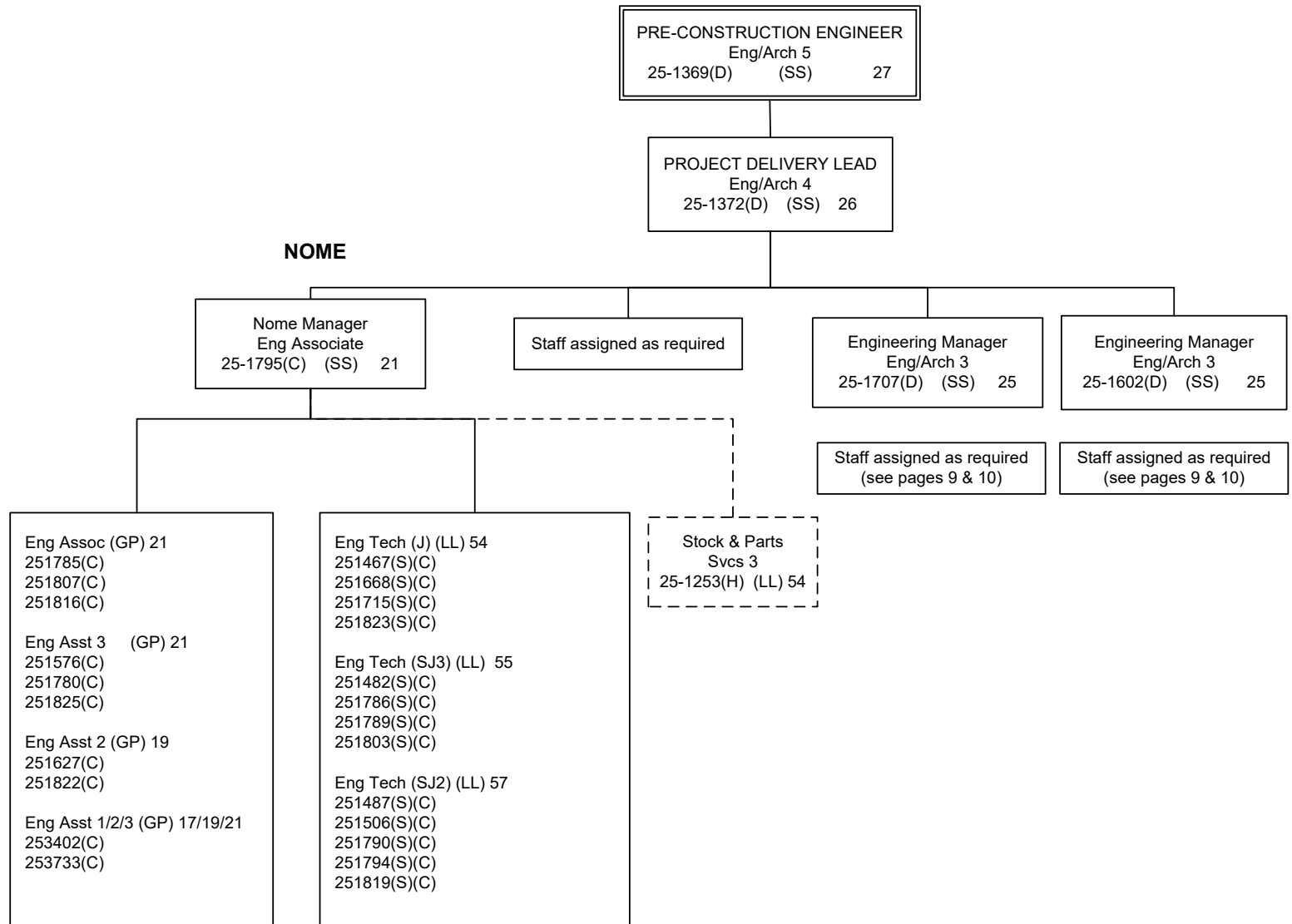
NORTHERN REGION DESIGN & CONSTRUCTION	
DESIGN FULL-TIME	112
DESIGN SEASONAL	13
DESIGN NON PERM	2
DESIGN TOTAL	127
CONSTRUCTION FULL-TIME	87
CONSTRUCTION SEASONAL	58
CONSTRUCTION NON PERM	5
CONSTRUCTION TOTAL	150
TOTAL	277

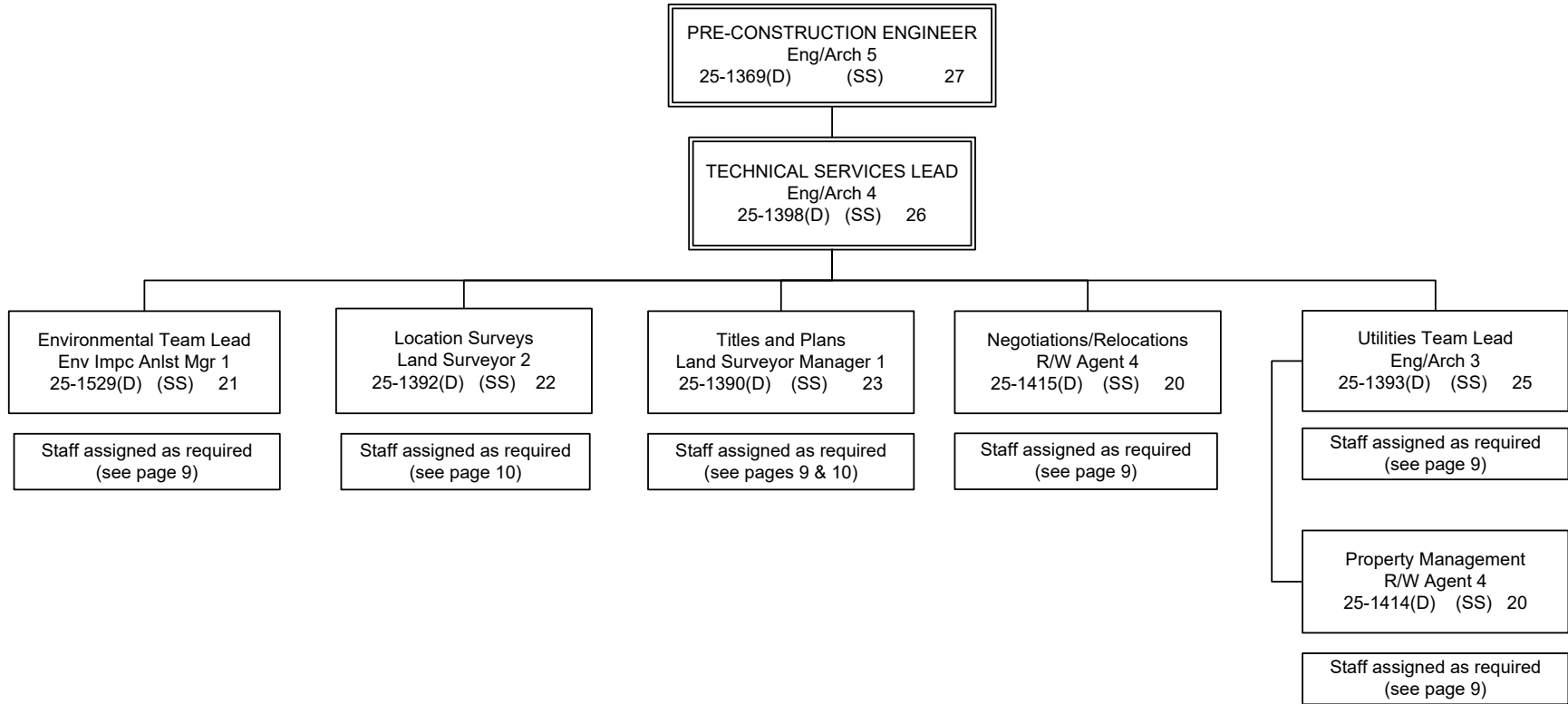












DESIGN & CONSTRUCTION ENGINEERING STAFF ASSIGNED AS REQUIRED (GG/GP)

<p>Eng Asst 1 (GP) 17</p> <p>251555(C) 251659(C) 251661(C)</p>	<p>Eng Asst 2/3 (GP) 19/21</p> <p>251441(D) 251712(D)</p>	<p>Eng Associate (GP) 21</p> <p>251387(C) 251405(C) 251573(C) 251609(C) 251705(C) 251797(C) 253401(C)</p>	<p>Drafting Tech 3 (GP) 15</p> <p>251770(D) 251832(D) 251559(D) 251558(D)</p>	<p>ROW Asst (GP) 12</p> <p>251425(D)</p>
<p>Eng Asst 1/2 (GP) 17/19</p> <p>251538(D) 251546(D) 251777(D) 251802(D)</p>	<p>Eng Asst 3 (GP) 21</p> <p>250165(D) 251394(D) 251406(D) 251409(D) 251412(C) 251421(D) 251436(C) 251439(D) 251447(C) 251455(C) 251530(D) 251534(C) 251537(D) 251578(C) 251599(D) 251607(D) 251611(D) 251632(C) 251639(C) 251658(C) 251656(C) 251657(C) 251742(C) 251765(C) 251781(C) 251782(C) 251784(C) 251796(C) 253730(C) 253731(C) 253732(C) 253450(D) 253453(D)</p>	<p>Eng Asst 3/Eng Associate/ Eng- Arch 1 (GP) 21/22</p> <p>251540(D) 251570(D) 251731(D) 253608(D)</p>	<p>Env Impact Analysts 1/2/3 (GP) 15/17/19</p> <p>251426(D) 251532(D) 251545(D) 251556(D) 251604(D) 251771(D) 251850(D)</p>	<p>ROW Agent 1 (GP) 14</p> <p>253694(D)</p>
<p>Eng Asst I/II/III (GP) 17/19/21</p> <p>250202(D) 251683(D) 253449(D)</p>		<p>Eng Asst 3 / Eng Assoc / Eng/Arch 1 (GP) 21/21/22</p> <p>251446(D) 251551(D) 253574(D)</p>	<p>Env Imp Analysts 2/3 (GP) 17/19</p> <p>252410(D)</p>	<p>ROW Agent 2 (GP) 16</p> <p>251400(D) 251423(D)</p>
<p>Eng Asst 2I (GP) 19</p> <p>251443(C) 251449(C) 251457(C) 251459(C) 251473(C) 251541(C) 251542(D) 251548(C) 251557(C) 251579(C) 251580(C) 251582(C) 251622(D) 251625(C) 251637(C) 251660(C) 251704(D) 251761(C) 251812(C) 251843(C) 253405(C) 253521(C) 253525(C) 253526(C) 253527(C) 253528(C)</p>	<p>Eng Arch 1 (GP) 22</p> <p>251382(D) 251396(D) 251432(D) 251434(C) 251437(D) 251531(D) 253452(D) 253607(D)</p>	<p>Env Impact Analysts 3 (GP) 19</p> <p>251536(D) 253593(D)</p>	<p>ROW Agent 3 (GP) 18</p> <p>251388(D) 251391(D) 251399(D) 251416(D) 251460(D) 251544(D) 251572(D) 251729(D)</p>	
			<p>Land Surveyor 1 (GP) 21</p> <p>251740(D) 251768(D)</p>	<p>Eng Geologist 1/2 (GP) 16/18</p> <p>251624(D) 251635(D)</p>
			<p>College Intern 1/2/3/4 (EE)8/9/10/12 25IN1202(D) 25IN1204(D) 25IN1114</p>	<p>Eng Geologist 2 (GP) 18</p> <p>250732(D) 251636(D)</p>

DESIGN & CONSTRUCTION ENGINEERING STAFF ASSIGNED AS REQUIRED (LTC)

Eng Technician (J) (LL) 54

251643(S)(D)
 251648(S)(D)
 251464(S)(C)
 251465(S)(C)
 251468(S)(C)
 251469(S)(C)
 251474(S)(C)
 251479(S)(C)
 251490(S)(C)
 251524(S)(C)
 251667(S)(C)
 251748(S)(C)
 251758(S)(C)
 251776(S)(D)
 251852(S)(C)
 251862(S)(C)

Maint Gen (J) (LL) 54
 251494(C)

Eng Technician (SJ3) (LL) 55

251480(S)(C)
 251484(S)(C)
 251485(S)(C)
 251486(S)(C)
 251492(S)(C)
 251615(S)(C)
 251678(S)(C)
 251762(S)(C)
 251776(S)(D)
 251854(S)(C)
 251857(S)(C)
 251875(S)(C)
 251876(S)(C)

Eng Technician (SJ2) (LL) 57

251502(S)(C)
 251507(S)(C)
 251508(S)(C)
 251511(S)(C)
 251518(S)(C)
 251519(S)(C)
 251525(S)(C)
 251566(S)(C)
 251569(S)(C)
 251596(S)(C)
 251684(S)(C)
 251688(S)(C)
 251689(S)(C)
 251693(S)(C)
 251700(S)(C)
 251701(S)(C)
 251710(S)(C)
 251745(S)(C)
 251787(S)(C)
 251880(S)(C)

Eng Tech (LL) 59/57
 Interns
 25IN1005(C)
 25IN1006(C)
 25IN1007(C)
 25IN1008(C)
 25IN1014(C)

Survey – Lead (LL) 53

25161(S)(D)
 251871(S)(D)

Survey – J (LL) 54

251500(S)(D)
 251565(S)(D)

Survey – SJ (LL) 56

251682(S)(D)
 251694(S)(D)

Driller – Journey (LL) 53

250723(D)
 251642(D)
 251645(D)
 251775(S)(D)

Driller – SJ (LL) 54

250247(D)
 251491(S)(D)
 251644(S)(D)

