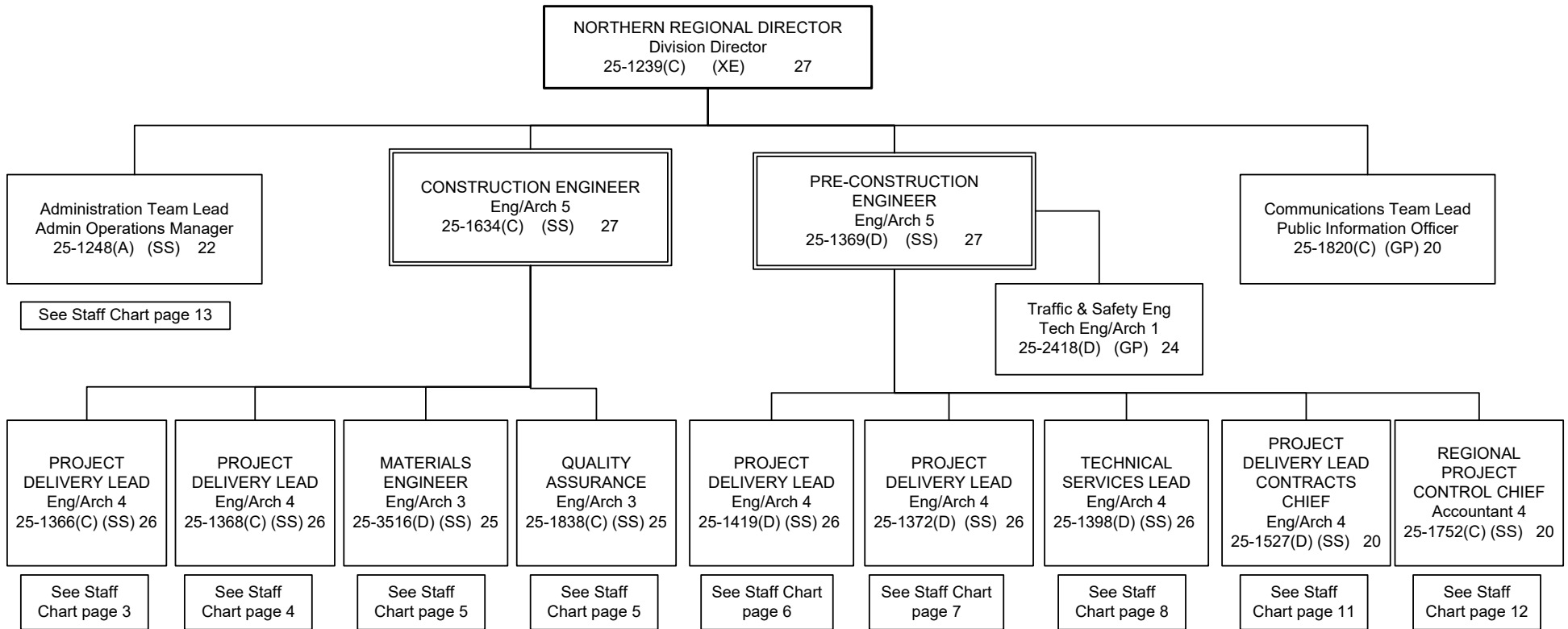


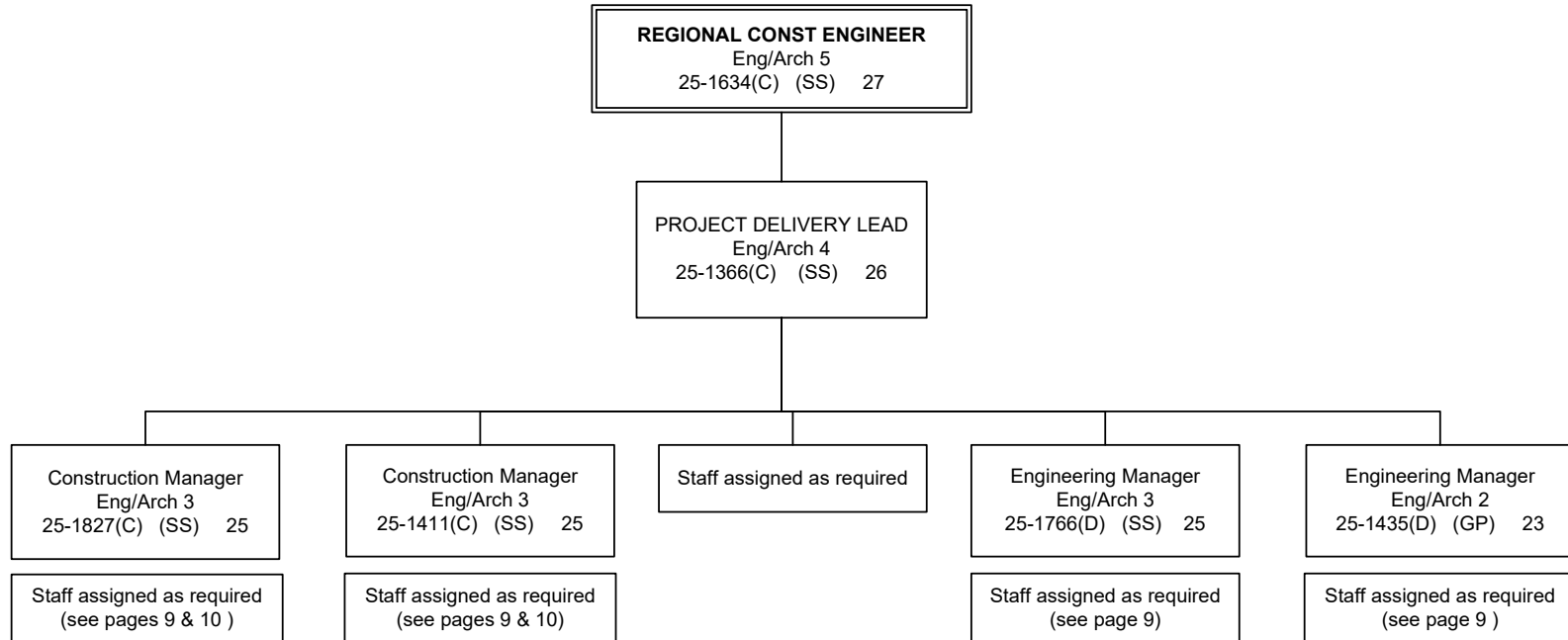
Key:

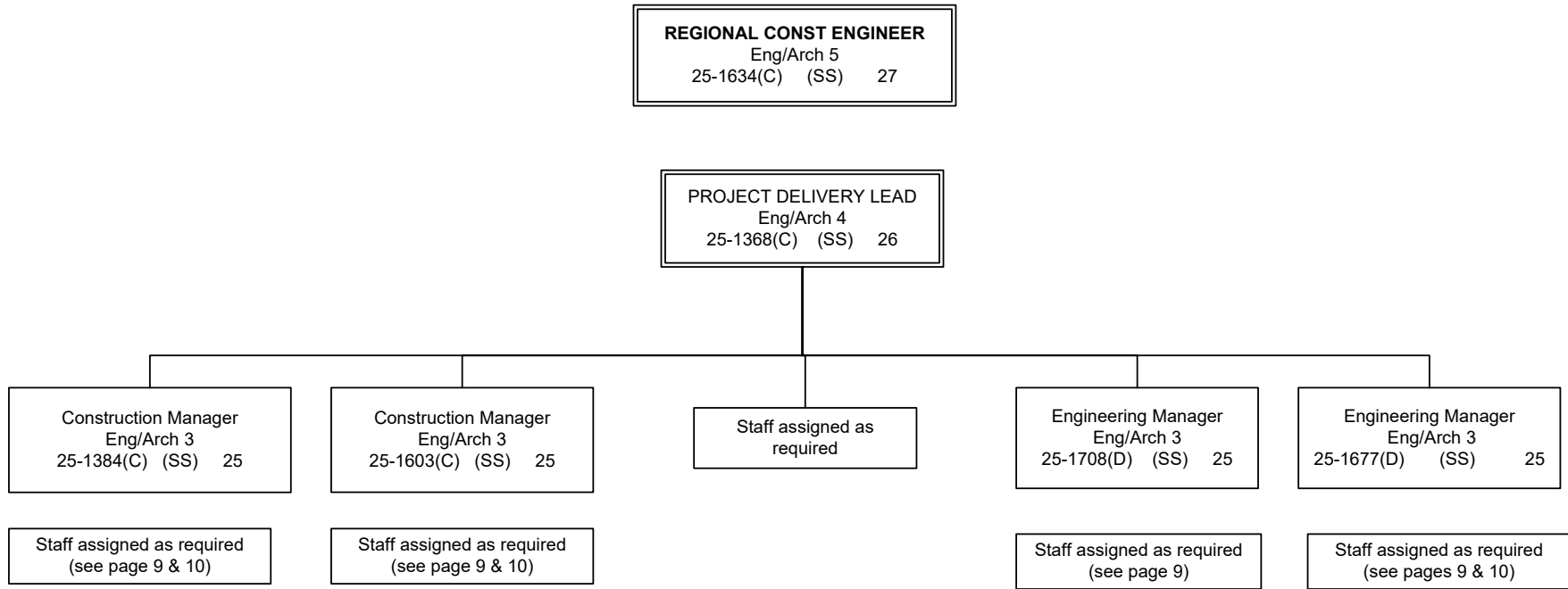
- (A) Admin Support Services Budget Component
- (C) Construction & CIP Support Budget Component**
- (D) Design & Engineering Svc Budget Component
- (H) Highway & Aviation Budget Component
- (S) Seasonal Position Type (SACL Budget Type)
- (GP) General Government Bargaining Unit
- (LL) Labor, Trades Bargaining Unit
- (SS) Supervisory Bargaining Unit
- (XE) Exempt Position

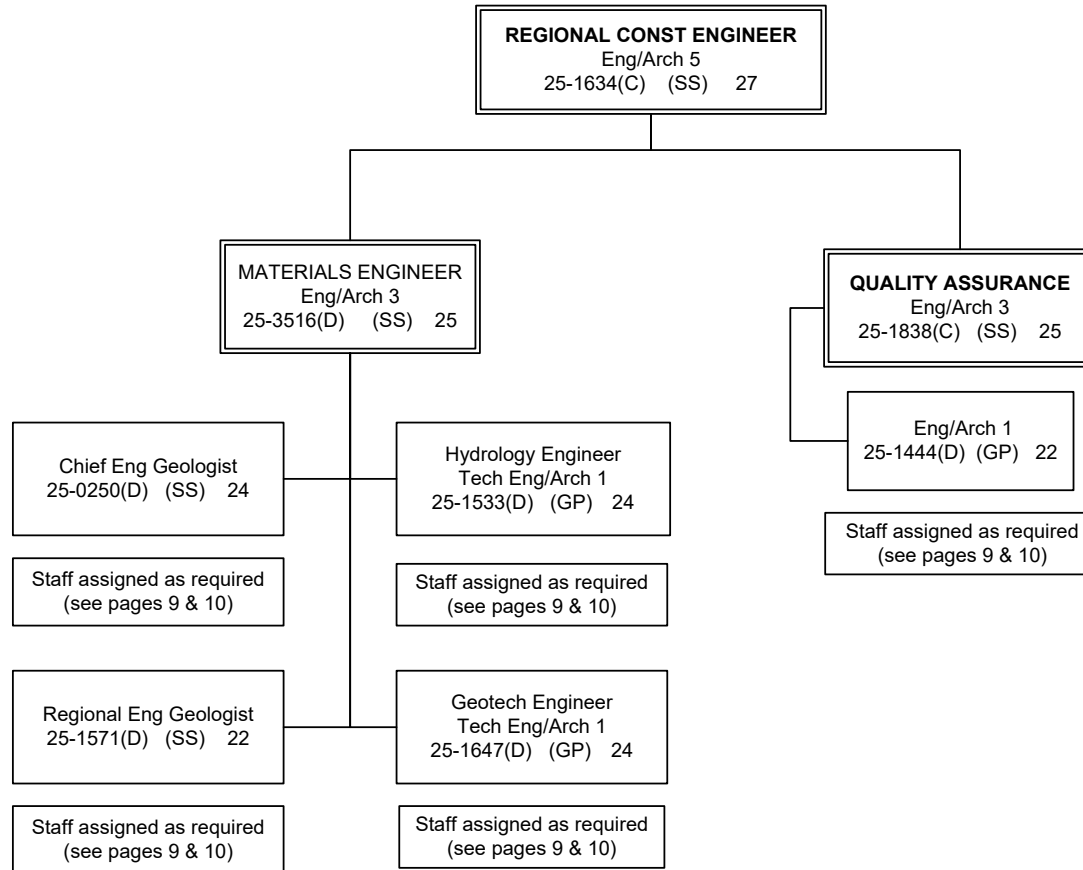
- J1 Journey 1
- J2 Journey 2
- J3 Journey 3
- SJ1 Sub-Journey 1
- SJ2 Sub-Journey 2

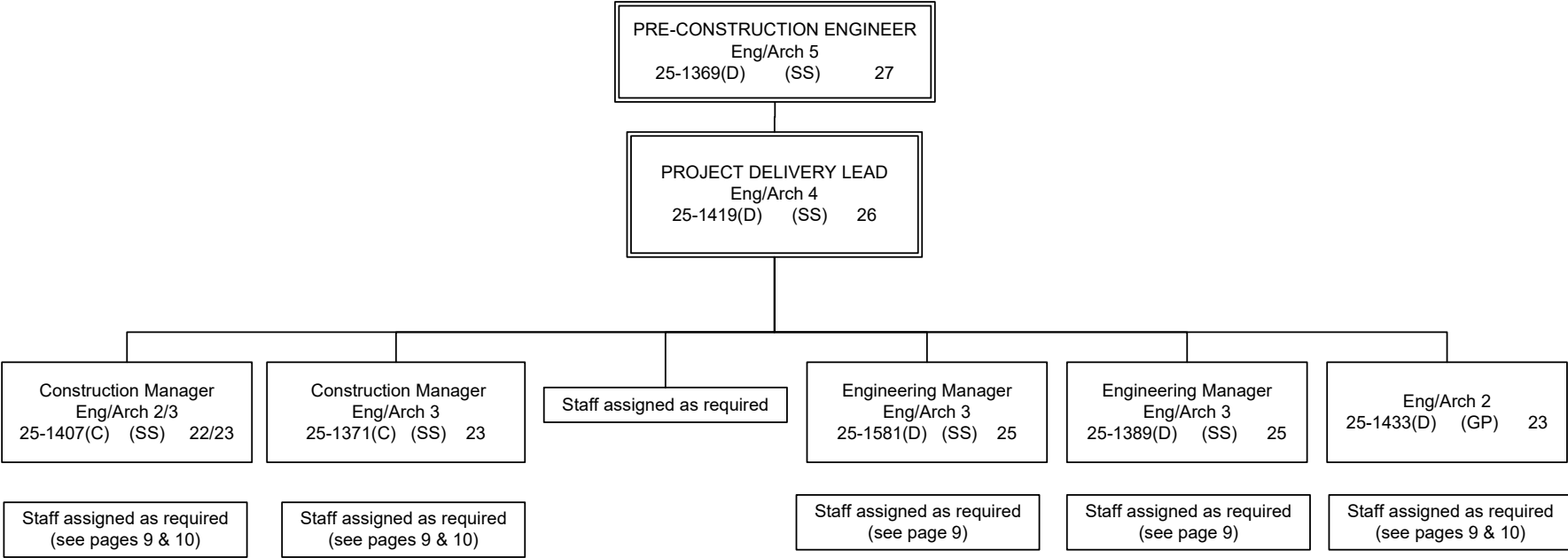


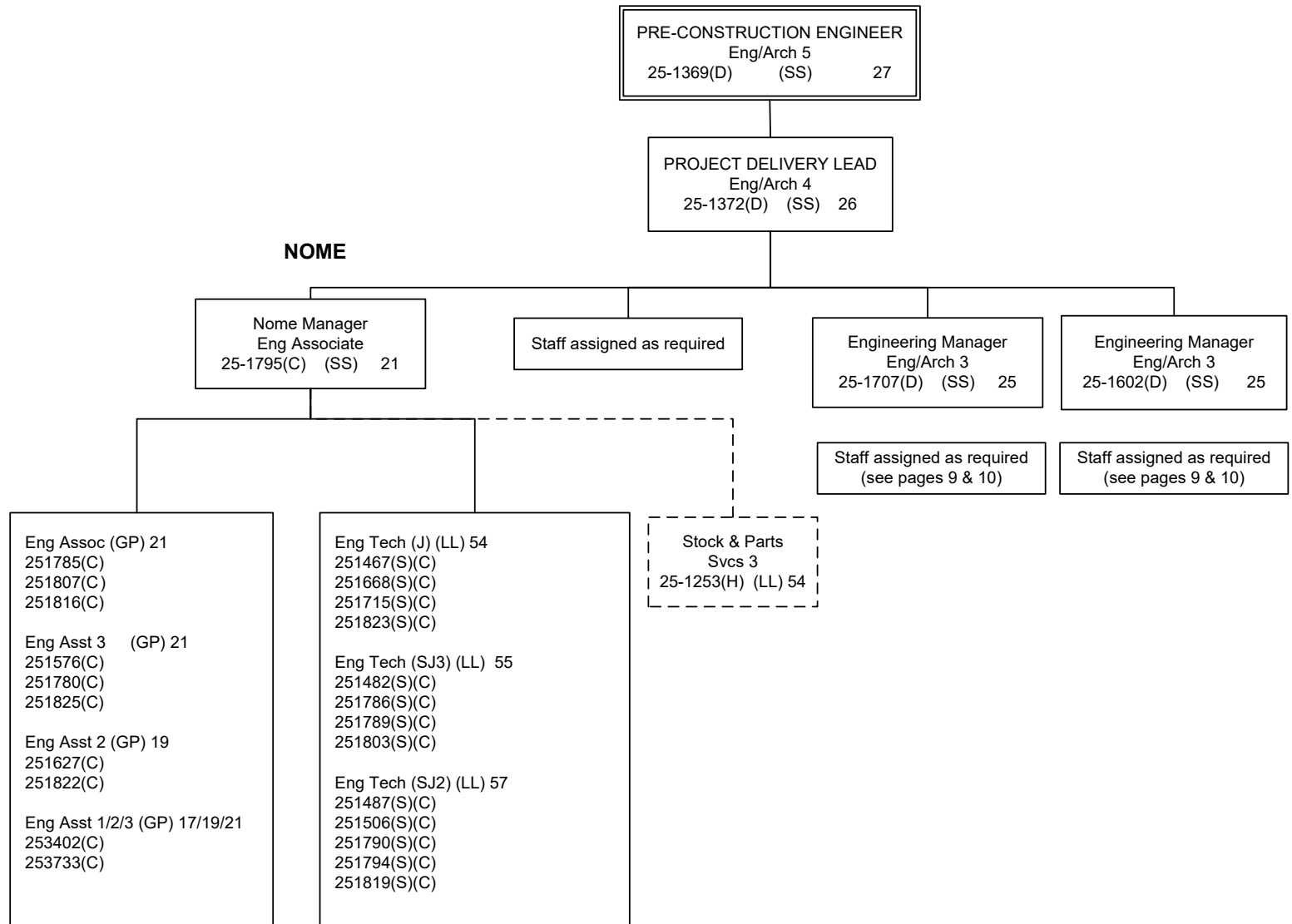
NORTHERN REGION DESIGN & CONSTRUCTION	
DESIGN FULL-TIME	112
DESIGN SEASONAL	13
DESIGN NON PERM	2
<b>DESIGN TOTAL</b>	<b>127</b>
<b>CONSTRUCTION FULL-TIME</b>	<b>87</b>
<b>CONSTRUCTION SEASONAL</b>	<b>58</b>
<b>CONSTRUCTION NON PERM</b>	<b>5</b>
<b>CONSTRUCTION TOTAL</b>	<b>150</b>
<b>TOTAL</b>	<b>277</b>

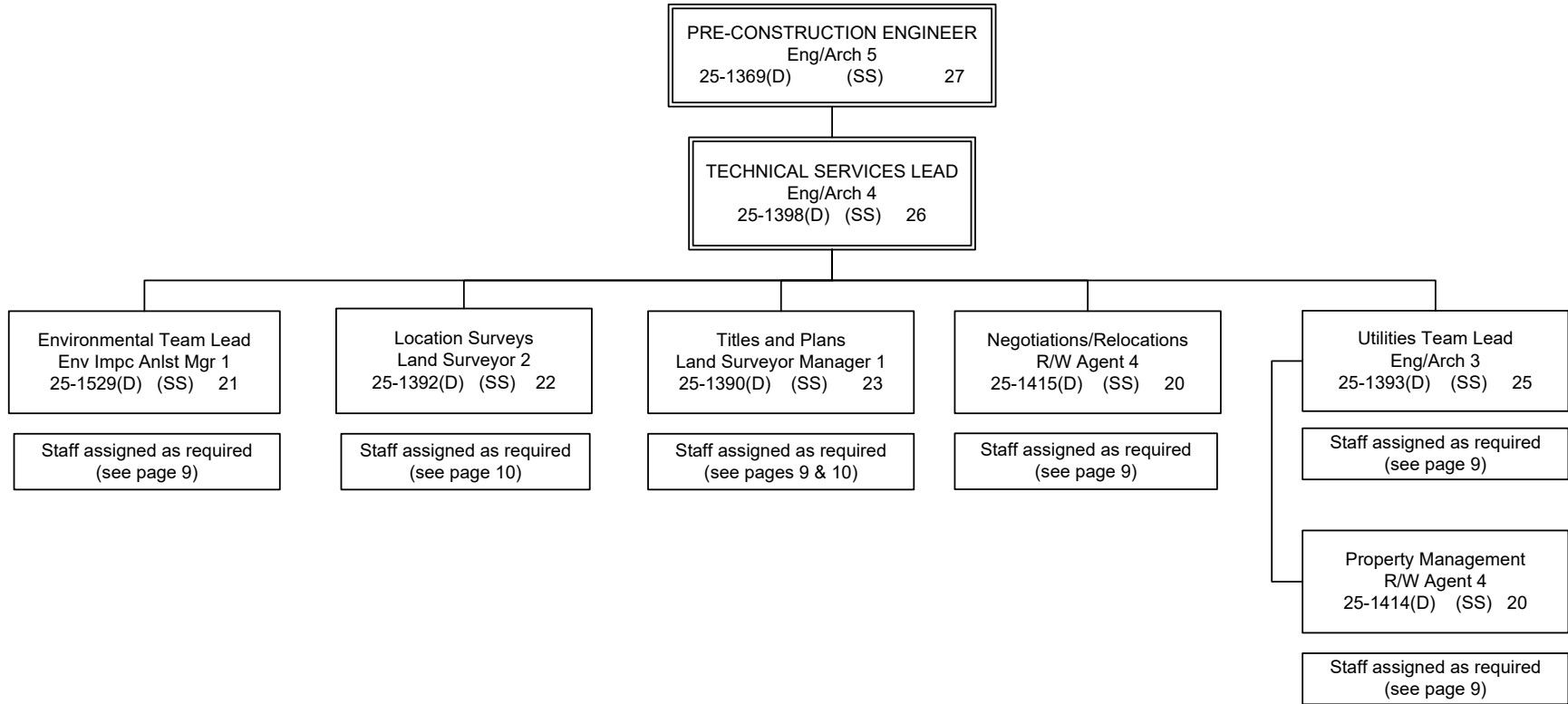














DESIGN & CONSTRUCTION ENGINEERING STAFF ASSIGNED AS REQUIRED (GG/GP)

<p>Eng Asst 1 (GP) 17</p> <p>251555(C) 251659(C) 251661(C)</p>	<p>Eng Asst 2/3 (GP) 19/21</p> <p>251441(D) 251712(D)</p>	<p>Eng Associate (GP) 21</p> <p>251387(C) 251405(C) 251573(C) 251609(C) 251705(C) 251797(C) 253401(C)</p>	<p>Drafting Tech 3 (GP) 15</p> <p>251770(D) 251832(D) 251559(D) 251558(D)</p>	<p>ROW Asst (GP) 12</p> <p>251425(D)</p>
<p>Eng Asst 1/2 (GP) 17/19</p> <p>251538(D) 251546(D) 251777(D) 251802(D)</p>	<p>Eng Asst 3 (GP) 21</p> <p>250165(D) 251394(D) 251406(D) 251409(D) 251412(C) 251421(D) 251436(C) 251439(D) 251447(C) 251455(C) 251530(D) 251534(C) 251537(D) 251578(C) 251599(D) 251607(D) 251611(D) 251632(C) 251639(C) 251658(C) 251656(C) 251657(C) 251742(C) 251765(C) 251781(C) 251782(C) 251784(C) 251796(C) 253730(C) 253731(C) 253732(C) 253450(D) 253453(D)</p>	<p>Eng Asst 3/Eng Associate/ Eng- Arch 1 (GP) 21/22</p> <p>251540(D) 251570(D) 251731(D) 253608(D)</p>	<p>Env Impact Analysts 1/2/3 (GP) 15/17/19</p> <p>251426(D) 251532(D) 251545(D) 251556(D) 251604(D) 251771(D) 251850(D)</p>	<p>ROW Agent 1 (GP) 14</p> <p>253694(D)</p>
<p>Eng Asst I/II/III (GP) 17/19/21</p> <p>250202(D) 251683(D) 253449(D)</p>		<p>Eng Asst 3 / Eng Assoc / Eng/Arch 1 (GP) 21/21/22</p> <p>251446(D) 251551(D) 253574(D)</p>	<p>Env Imp Analysts 2/3 (GP) 17/19</p> <p>252410(D)</p>	<p>ROW Agent 2 (GP) 16</p> <p>251400(D) 251423(D)</p>
<p>Eng Asst 2I (GP) 19</p> <p>251443(C) 251449(C) 251457(C) 251459(C) 251473(C) 251541(C) 251542(D) 251548(C) 251557(C) 251579(C) 251580(C) 251582(C) 251622(D) 251625(C) 251637(C) 251660(C) 251704(D) 251761(C) 251812(C) 251843(C) 253405(C) 253521(C) 253525(C) 253526(C) 253527(C) 253528(C)</p>		<p>Eng Arch 1 (GP) 22</p> <p>251382(D) 251396(D) 251432(D) 251434(C) 251437(D) 251531(D) 253452(D)  253607(D)</p>	<p>Env Impact Analysts 3 (GP) 19</p> <p>251536(D) 253593(D)</p>	<p>ROW Agent 3 (GP) 18</p> <p>251388(D) 251391(D) 251399(D) 251416(D) 251460(D) 251544(D) 251572(D) 251729(D)</p>
			<p>Land Surveyor 1 (GP) 21</p> <p>251740(D) 251768(D)</p>	<p>Eng Geologist 1/2 (GP) 16/18</p> <p>251624(D) 251635(D)</p>
			<p>College Intern 1/2/3/4 (EE)8/9/10/12 25IN1202(D) 25IN1204(D) 25IN1114</p>	<p>Eng Geologist 2 (GP) 18</p> <p>250732(D) 251636(D)</p>

DESIGN & CONSTRUCTION ENGINEERING STAFF ASSIGNED AS REQUIRED (LTC)

Eng Technician (J) (LL) 54  
251643(S)(D)  
251648(S)(D)  
251464(S)(C)  
251465(S)(C)  
251468(S)(C)  
251469(S)(C)  
251474(S)(C)  
251479(S)(C)  
251490(S)(C)  
251524(S)(C)  
251667(S)(C)  
251748(S)(C)  
251758(S)(C)  
251776(S)(D)  
251852(S)(C)  
251862(S)(C)

Maint Gen (J) (LL) 54  
251494(C)

Eng Technician (SJ3) (LL) 55  
251480(S)(C)  
251484(S)(C)  
251485(S)(C)  
251486(S)(C)  
251492(S)(C)  
251615(S)(C)  
251678(S)(C)  
251762(S)(C)  
251776(S)(D)  
251854(S)(C)  
251857(S)(C)  
251875(S)(C)  
251876(S)(C)

Eng Technician (SJ2) (LL) 57  
251502(S)(C)  
251507(S)(C)  
251508(S)(C)  
251511(S)(C)  
251518(S)(C)  
251519(S)(C)  
251525(S)(C)  
251566(S)(C)  
251569(S)(C)  
251596(S)(C)  
251684(S)(C)  
251688(S)(C)  
251689(S)(C)  
251693(S)(C)  
251700(S)(C)  
251701(S)(C)  
251710(S)(C)  
251745(S)(C)  
251787(S)(C)  
251880(S)(C)

Eng Tech (LL) 59/57  
Interns  
25IN1005(C)  
25IN1006(C)  
25IN1007(C)  
25IN1008(C)  
25IN1014(C)

Survey – Lead (LL) 53  
25161(S)(D)  
251871(S)(D)

Survey – J (LL) 54  
251500(S)(D)  
251565(S)(D)

Survey – SJ (LL) 56  
251682(S)(D)  
251694(S)(D)

Driller – Journey (LL) 53  
250723(D)  
251642(D)  
251645(D)  
251775(S)(D)

Driller – SJ (LL) 54  
250247(D)  
251491(S)(D)  
251644(S)(D)

