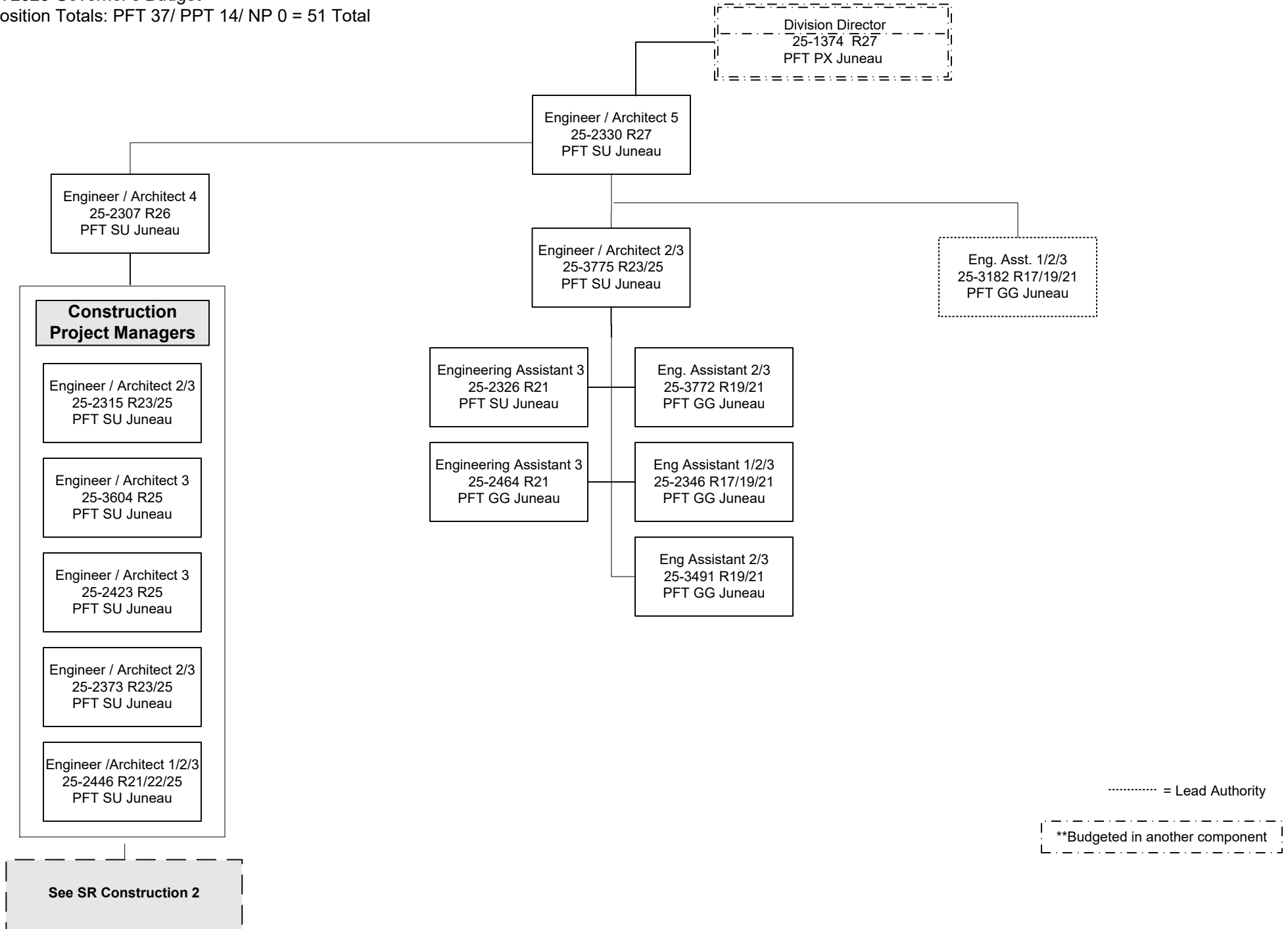


Department of Transportation and Public Facilities
 RDU/Component: Design, Engineering and Construction /
 Southcoast Region Construction (2297)
 FY2023 Governor's Budget
 Position Totals: PFT 37/ PPT 14/ NP 0 = 51 Total



CONSTRUCTION ENGINEERING STAFF REPORT TO ENGINEER/ARCHITECT POSITIONS ON PREVIOUS PAGE

Engineering Associate R21	PFT	GG
252367		
253695		

Engineering Assistant 3 R21	PFT	GG
250911		
252360	Ketchikan	
252465		
253390		
253771	Haines	

Engineering Assistant 1/2 (FLEX) R17/19	PFT	GG
252366	Haines	
252356		
252370		
252399		
252412		
252435		
253389	Ketchikan	
253492		
253699		
253704		
252443		
252355		

Engineering Assistant 1/2/3 (FLEX) R17/19/21	PFT	GG
252388		
252389		

Engineering Assistant 2/3 (FLEX) R19/21	PFT	GG
252439	Ketchikan	

Eng Technician Journey WG54	PPT	LL
252402	Ketchikan	
252405		
252406	Haines	
252408		
252414	Ketchikan	
253701	Ketchikan	
250583		

Eng Technician (SJ 3) WG55	PPT	LL
252415		
252422	Haines	
252424		
252429		
253700		

Eng Technician (SJ 2) WG57	PPT	LL
252409	Ketchikan	
252432		

Env. Impact Analyst 2/3 R17/19	PFT	GG
253855		

All positions located in Juneau unless otherwise noted

Legend
J = Journey
SJ = SubJourney