

Department of Transportation & Public Facilities

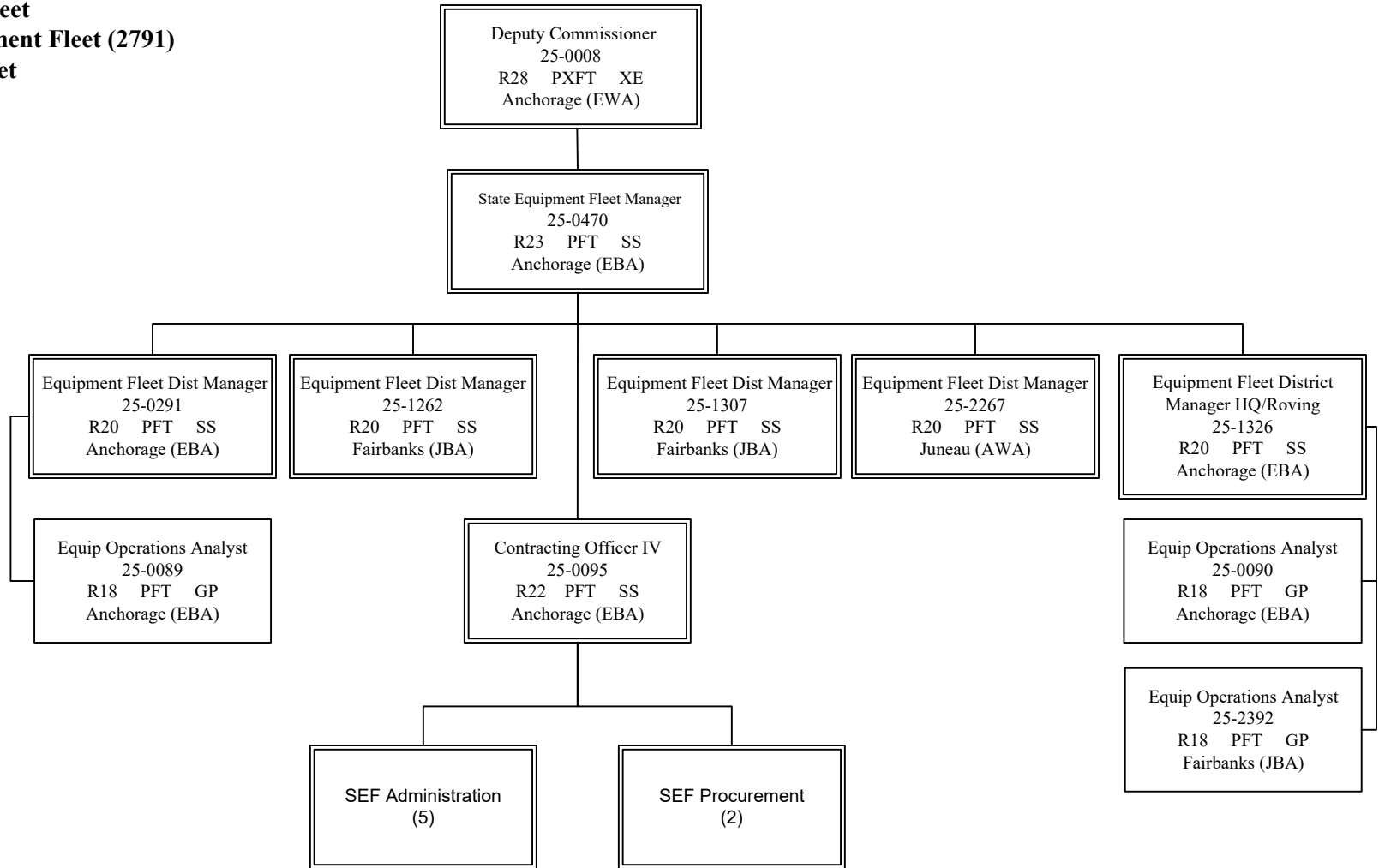
RDU: State Equipment Fleet

Component: State Equipment Fleet (2791)

FY2023 Governor's Budget

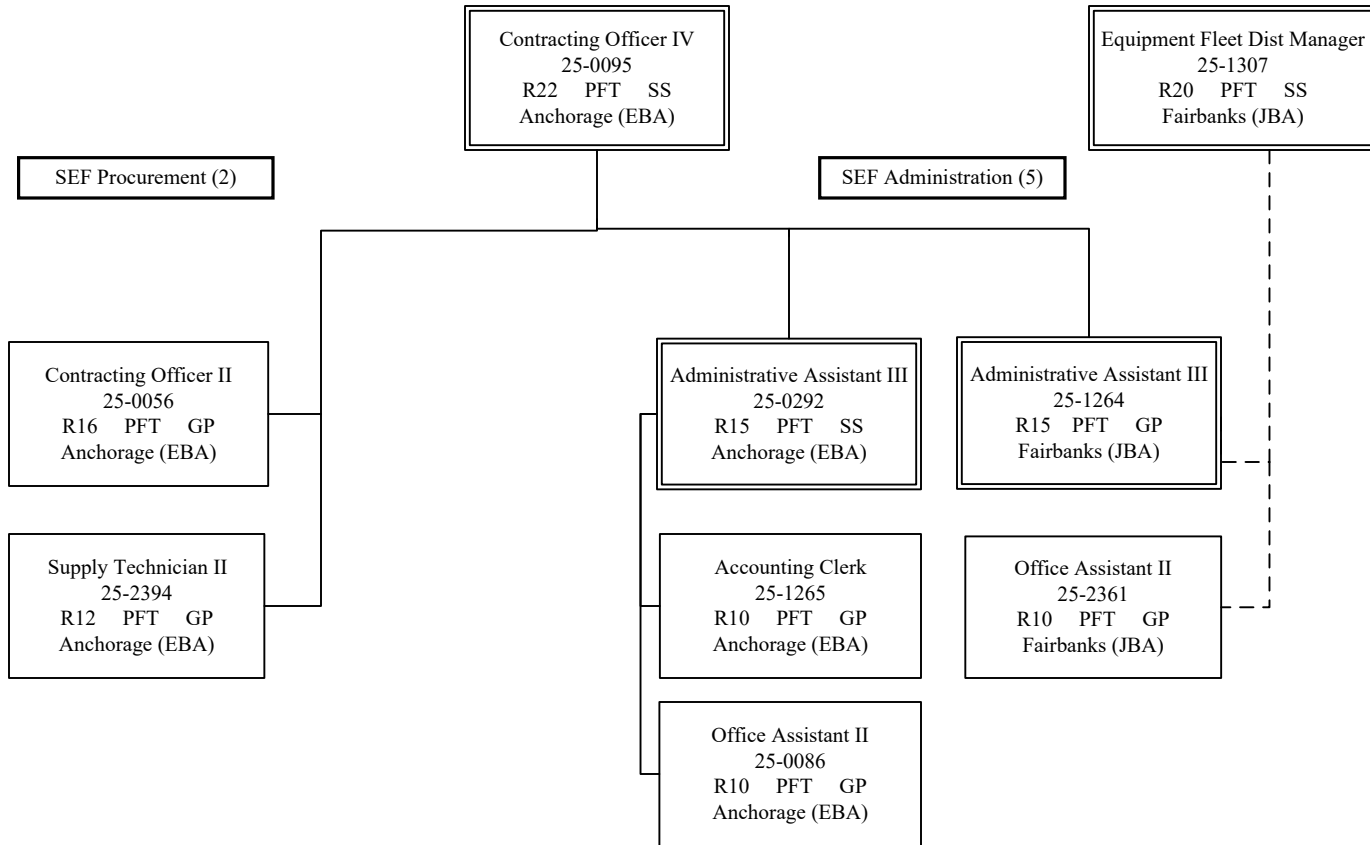
Component Total: 158

Page Total: 10



Department of Transportation & Public Facilities
RDU: State Equipment Fleet
Component: State Equipment Fleet (2791)
FY2023 Governor's Budget
Component Total: 158
Page Total: 7

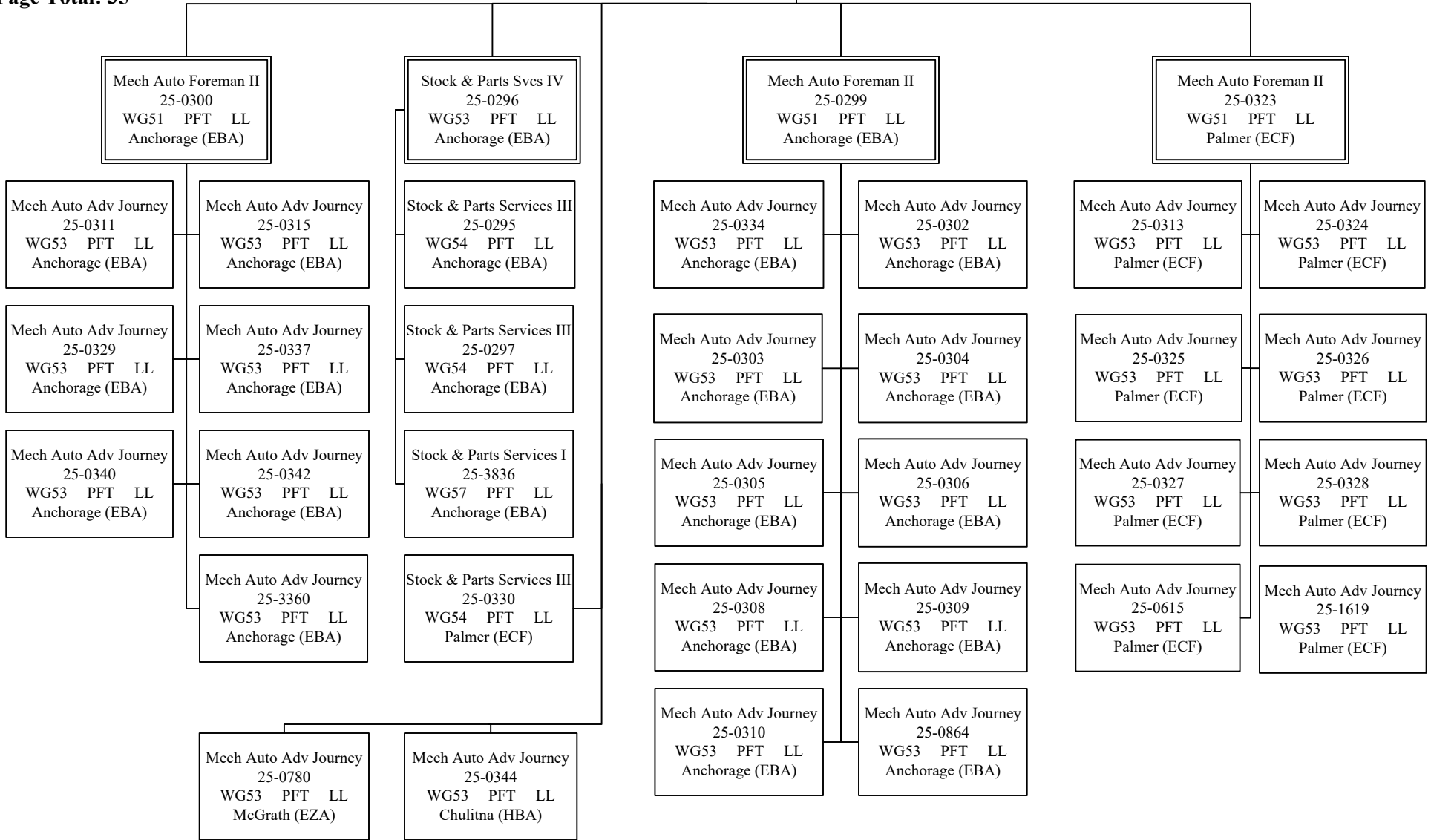
State Equipment Fleet Manager
 25-0470
 R23 PFT SS
 Anchorage (EBA)



Department of Transportation & Public Facilities
RDU: State Equipment Fleet
Component: State Equipment Fleet (2791)
FY2023 Governor's Budget
Component Total: 158
Page Total: 35

Equipment Fleet Dist Manager
 25-0291
 R20 PFT SS
 Anchorage (EBA)

State Equipment Fleet Manager
 25-0470
 R23 PFT SS
 Anchorage (EBA)



Department of Transportation & Public Facilities

RDU: State Equipment Fleet

Component: State Equipment Fleet (2791)

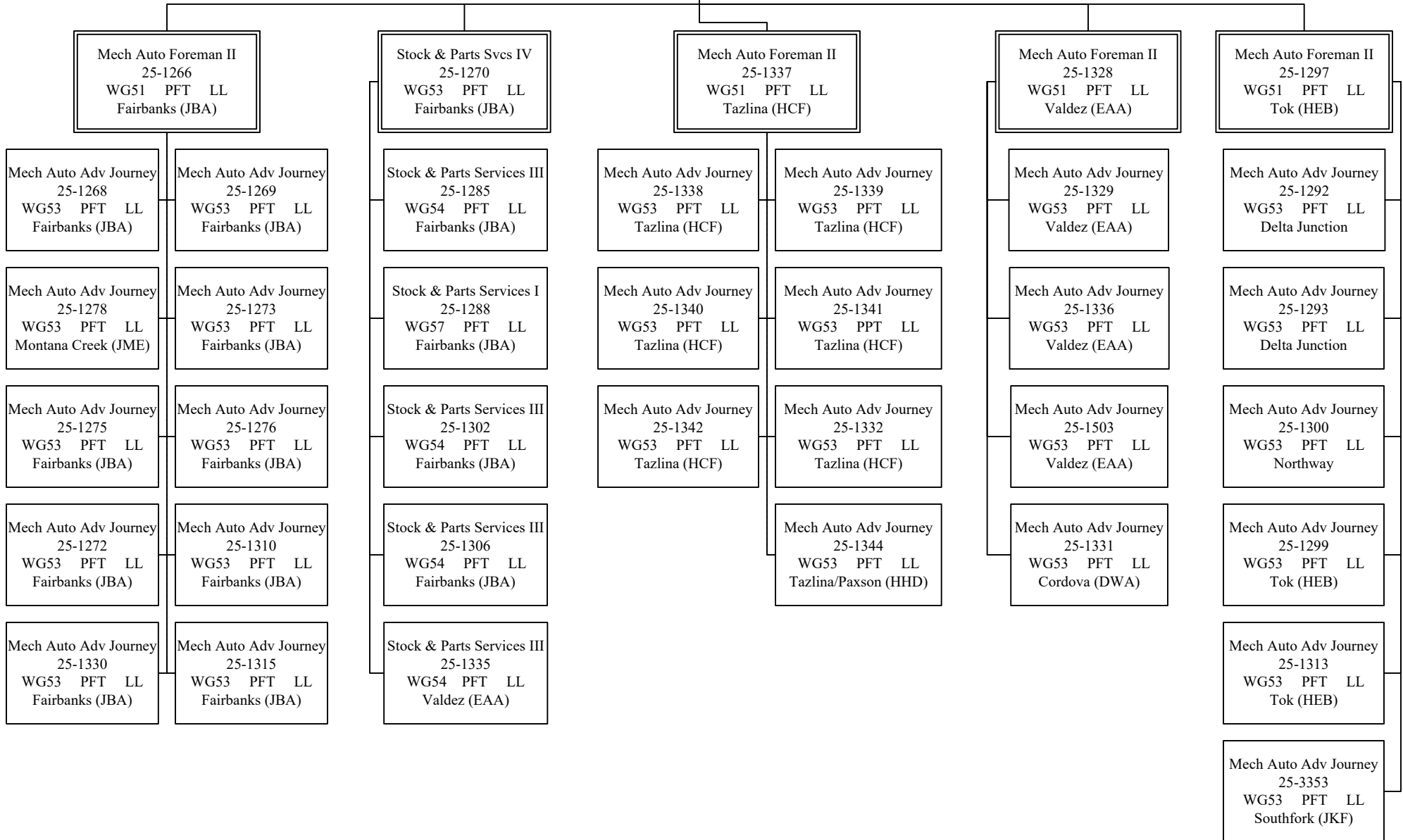
FY2023 Governor's Budget

Component Total: 158

Page Total: 37

Equipment Fleet Dist Manager
25-1262
R20 PFT SS
Fairbanks (JBA)

State Equipment Fleet Manager
25-0470
R23 PFT SS
Anchorage (EBA)



Department of Transportation & Public Facilities

RDU: State Equipment Fleet

Component: State Equipment Fleet (2791)

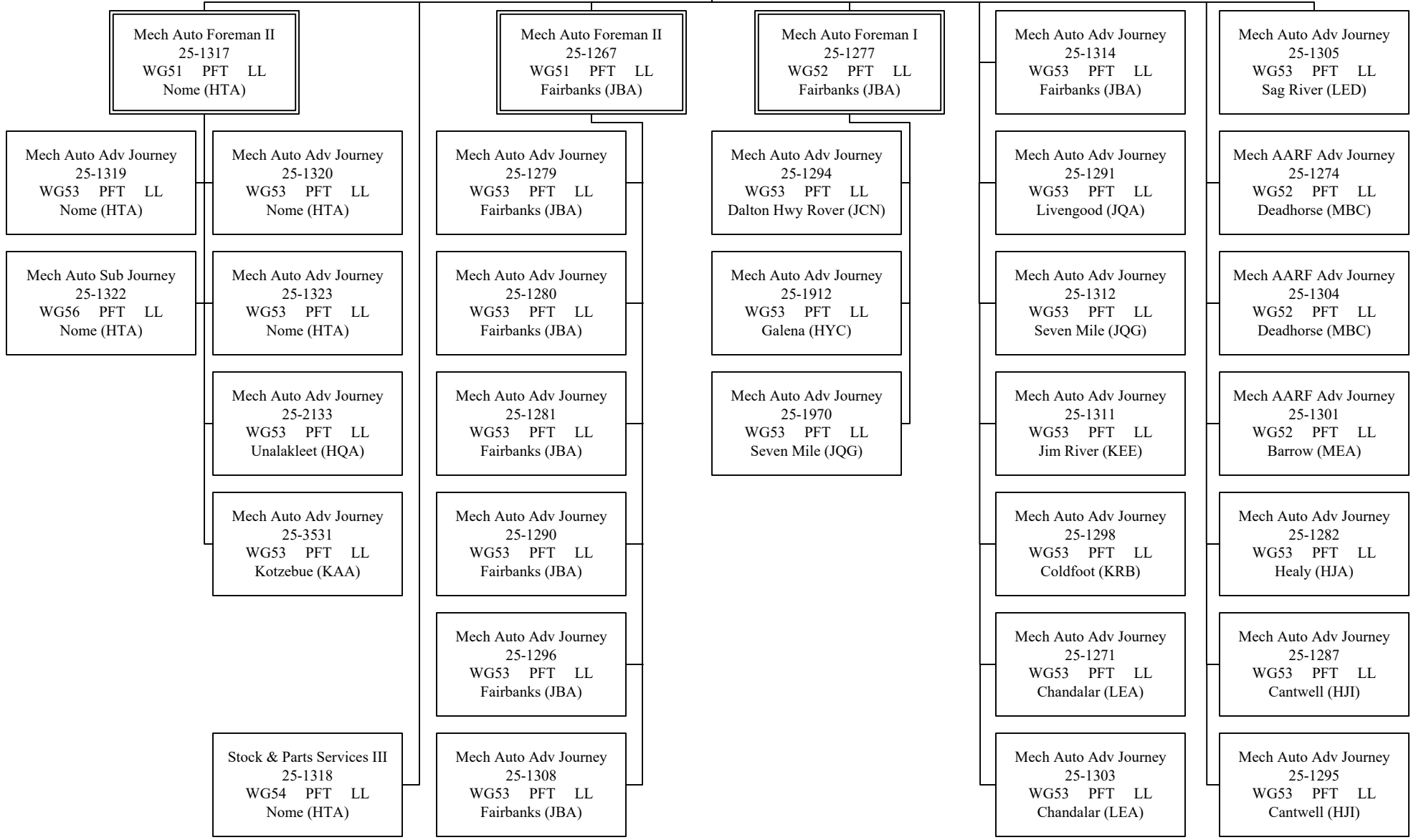
FY2023 Governor's Budget

Component Total: 158

Page Total: 33

Equipment Fleet Dist Manager
25-1307
R20 PFT SS
Fairbanks (JBA)

State Equipment Fleet Manager
25-0470
R23 PFT SS
Anchorage (EBA)



Department of Transportation & Public Facilities

RDU: State Equipment Fleet

Component: State Equipment Fleet (2791)

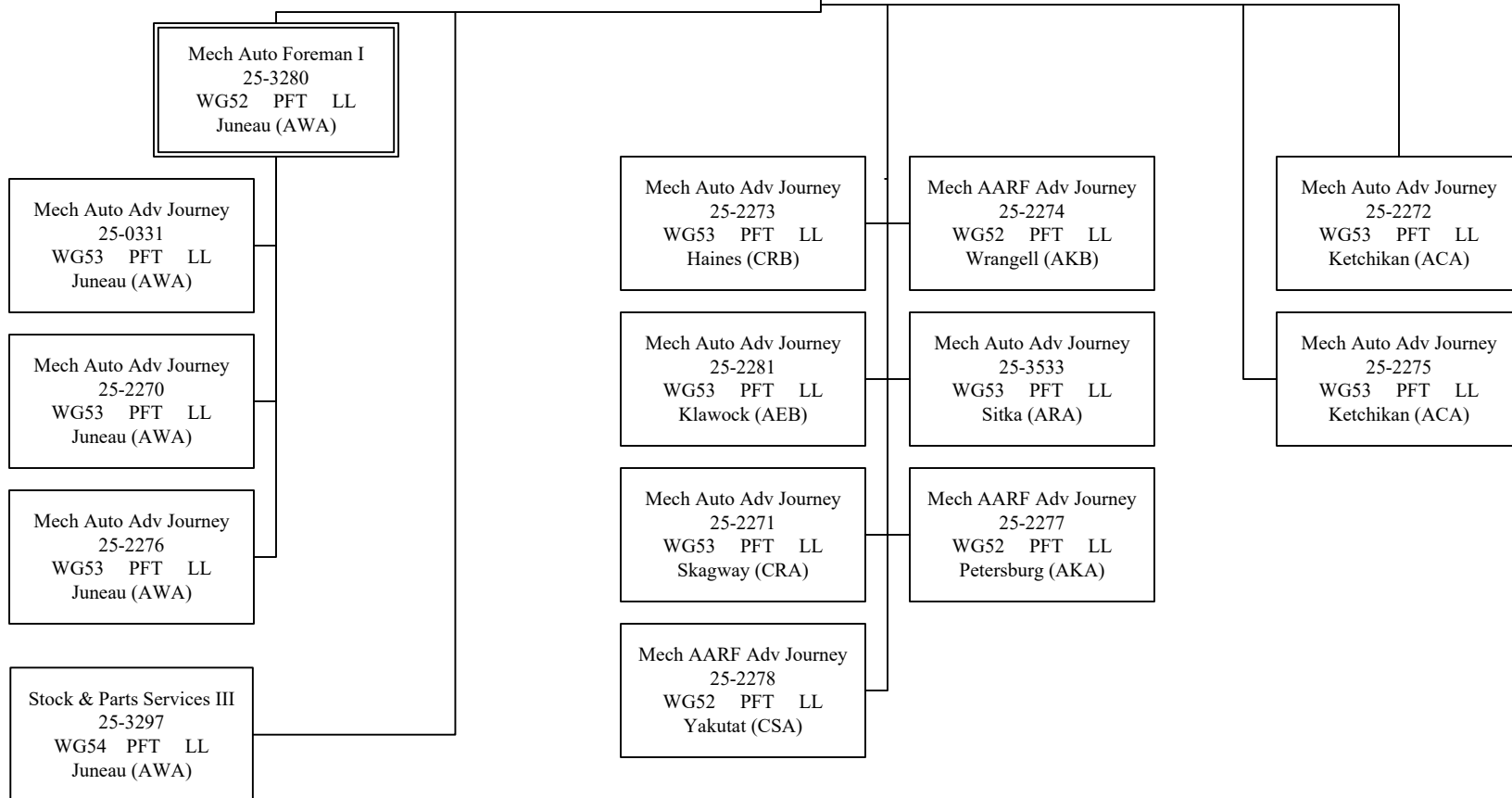
FY2023 Governor's Budget

Component Total: 158

Page Total: 14

Equipment Fleet Dist Manager
25-2267
R20 PFT SS
Juneau (AWA)

State Equipment Fleet Manager
25-0470
R23 PFT SS
Anchorage (EBA)



Department of Transportation & Public Facilities

RDU: State Equipment Fleet

Component: State Equipment Fleet (2791)

FY2023 Governor's Budget

Component Total: 158

Page Total: 22

